

Assessment & Tax List - 1963

Wabedo

Assessment of

TABULAR SCHEDULE OF VALUATIONS,

LEVIED IN THE Town OF Nabed

RATES AND TAXES

COUNTY OF CASS, STATE OF MINNESOTA

NAME OF OWNER

School District No.	VALUATION BY SCHOOL DISTRICTS				RATE OF STATE TAXES		RATE OF COUNTY TAXES					RATE OF TOWN TAXES										SCHOOL TAXES		TAXES LEVIED									
	Agricultural Lands	Non-Agricultural Lands	Personal Property	Total Value of all Property except Money and Credits	Total Rate of State Tax	Total Rate of County Tax	Rev.	R. & B.	Welfare	Bonds and Int.	City	Para	Total Rate of County Tax	Rev.	R. & B.	State Loan	Local	Special	State Loan	Deficiency	Tuition	Transportation	Total Rate of Sch'l Tax	Total Rate of all Taxes	Local 1 Mill	Special	State Loan	Def.	Total School Taxes	FUNDS	Rate	Amounts	
1	78,886	69,201	16,332	164,419	H. 8.22	122.83	31.51	20.	59.51	1.92	2.	5.17	5.	7.3								92.03	235.38										
2					N. 11. 8.92																												
3					17.14																												
4	Assessed Value Homestead	Rural 25,094	All Other	Personal Property 25,094																													
5	Non-Homestead	122,993		16,332																													
6	Total	148,087		16,332																													
7																																	

LOCAL 1 MILL AND SPECIAL SCHOOL TAXES BY DISTRICTS										ALL OTHER TAXES									
Local 1 Mill	Special	State Loan	Def.	Total School Taxes	FUNDS	Rate	Amounts												
157772	342132	616094	568216	725988	State - Non-Homestead		145.64												
			616094	958236	State - Homestead		1262.00												
499904			1184310	1684214	County Revenue,		5180.84												
					County Road and Bridge,		3288.38												
					County Welfare,		9784.57												
					Bonds and Interest		315.68												
					C. H. Bldg		328.84												
					PERA		850.04												
					Town Revenue,		832.09												
					Town Road and Bridge,		1200.26												
					Town Site Loan.		2022.35												
					County A. Nurse		144.69												
					Civil Def.		296.00												
					Reg. Assn		78.92												
					Cramp.		194.21												
							20,195.57												
					School Local 1 Mill		4999.04												
					School Special,		11,843.10												
					School State Loan,														
					Deficiency														
					Tuition														
					Transportation		16,842.14												
							41467.70												

Total Taxes Real Estate 37,337.70
 Pers. Prop. 4130.00
 Total 41,467.70

Total Number of Acres 7609.15
 State of Minnesota, ss. Auditor of said County and State of Minnesota, do hereby certify that the foregoing is a true and correct Schedule, showing the valuation of all the taxable property, in the Town of Nabed, in said County, the several rates of Taxation and Totals of the several Tax Funds levied thereon for the year A. D. 1963, payable on 1964.
 Witness my hand and official seal, this 31st day of December, A. D. 1963.

SEAL

Edw. J. Doney, County Auditor
 By Helen Tolken, Deputy

Assessment of

COLLECTIONS OF TAXES OF 196

OF

CASS COUNTY, MINNESOTA

Form 314

NAME OF OWNER

FUNDS	MARCH SETTLEMENT 19.64	JUNE SETTLEMENT 19.64	NOV. SETTLEMENT 19.64	Amount Collected from Nov. 19.64 to First Monday in Jan. 19.65	REDUCTIONS	Total Reductions and Collected	BALANCE UNCOLLECTED	ADDITIONS	Total Uncollected to First Monday in January, 19.65
State-Non-Homestead,	64.39	705.56	336.62	12.38					
State-Homestead,	57.19	730.68	387.58	14.25					
County Revenue,	497.02	2843.30	1508.43	57.27					
County Road and Bridge,	315.47	1804.70	957.43	36.35					
County Welfare,	938.67	5369.87	2848.83	108.17					
County Bond and Interest,	30.28	173.25	91.91	3.49					
P.E.R.A.	81.55	466.51	247.50	9.40					
Co. Nurse	13.88	79.41	42.13	1.60					
C.H. Bldg.	31.65	180.47	95.74	3.64					
Town Revenue,	78.88	465.17	239.36	9.09					
Town Road and Bridge,	125.15	658.71	349.46	13.27					
Town State Loan,									
Civil Defense	2.84	16.24	8.62	.33					
Apex Assn.	7.57	43.32	22.28	.87					
Temp.	18.61	106.48	56.49	2.14					
School Local 1 Mill	540.23	2558.98	1529.53	48.16					
School Special,									
School State Loan,									
Deficiency	1136.15	6499.62	3448.18	130.92					
Tuition									
Transportation									
	3971.43	22682.7	12170.99	451.29					

	SCHOOL DISTRICT NO.	LOCAL 1 MILL	SPECIAL	STATE LOAN	Specifying	TOTALS
MARCH SETTLEMENT	School District No. <i>Aun</i>		40.70		146.59	187.29
	<i>Un ka</i>		549.53		989.56	1539.07
	Totals		590.23		1136.15	1726.38
JUNE SETTLEMENT	School District No.					
	<i>Un a</i>		1050.41		3783.06	4833.47
	<i>Un Na</i>		1508.57		2716.56	4225.13
Totals		2558.98		6499.62	9058.60	
NOVEMBER SETTLEMENT	School District No.					
	<i>Un ka</i>		385.32		1387.74	1773.06
	<i>Un Na</i>		1144.21		2060.44	3204.65
Totals		1529.53		3448.18	4977.71	
NOVEMBER to JANUARY	School District No.					
	<i>Un a</i>		24.55		88.40	112.95
	<i>Un Na</i>		23.61		42.52	66.13
Totals		48.16		130.92	179.08	
ADDITIONS	School District No.					
Totals						
REDUCTIONS	School District No.					
Totals						

Assessment Roll and Tax List of Real Property in the Town of Wabedo

Cass County, Minnesota, for Taxes for the Year 1963.

* Indicate Type of Property: R-Residential, C-Commercial, I-Industrial, U-Utility, F-Farm, L-Lakeshore, T-Timber, M-Mineral

Table with columns for IN WHOSE NAME ASSESSED, DESCRIPTION OF PROPERTY, TRUE AND FULL VALUATIONS, ASSESSED VALUATIONS, VALUATIONS BY SCHOOL DISTRICTS AS EQUALIZED BY DEPARTMENT OF TAXATION, TAXES, PAID, WHEN PAID, and REMARKS. Includes handwritten entries for names like Roy W. Rose, Wm. A. & Sala Johnson, and James J. & George J. Daugherty.

Assessment Roll and Tax List of Real Property in the Town of Wabedo

* Indicate Type of Property: R-Residential, C-Commercial, I-Industrial, U-Utility, F-Farm, L-Lakeshore, T-Timber, M-Mineral

Minnesota, for Taxes for the Year 1963.

Main table with columns: IN WHOSE NAME ASSESSED, DESCRIPTION OF PROPERTY, TRUE AND FULL VALUATIONS, ASSESSED VALUATIONS, VALUATIONS BY DEPT., PAID, WHEN PAID, etc.

Wabedo Dec. 17-1963
3/4 int of SW4-SE4-3-140-28
1/4 int of SW4-SE4-3-140-28
Mrs. S. Fladland

1964 Tax - Sec. 3-140-28
426
1st HALF PAID DEC 20 1964 21577
2nd HALF PAID MAY 29 1964 12772

(Cont. on next page)

380 L 98

4260 4511-771 436156 2120 79444
1276 1101-2377 71168
1536 1612-3148 77324

Assessment Roll and Tax List of Real Property in the Town of Wabedo

* Indicate Type of Property: R-Residential, C-Commercial, I-Industrial, U-Utility, F-Farm, L-Lakeshore, T-Timber, M-Mineral

Cass County, Minnesota, for Taxes for the Year 1963.

Table with columns for Property Description, Valuations (Rural, All Other, Machinery, etc.), Taxes (SOLD FOR TAXES, PAID, WHEN PAID), and Remarks. Includes handwritten entries for property owners like Edward & Ruth Florzak and Thomas & Ruth E. Lyons.

Assessment Roll and Tax List of Real Property in the Town of Wabedo

* Indicate Type of Property: R-Residential, C-Commercial, I-Industrial, U-Utility, F-Farm, L-Lakeshore, T-Timber, M-Mineral

Table with columns: IN WHOSE NAME ASSESSED, DESCRIPTION OF PROPERTY, TRUE AND FULL VALUATIONS, ASSESSED VALUATIONS, and FINAL EQUALIZED VALUE. Includes handwritten entries for Fred J. & Mary Alice Rynda, Agatha E. & Harold R. Swanson, Lambert W. Staulecup, Henry W. Rose, George B. & Margaret C. Cook, Wilbur C. & Bernice E. Thatcher, and Glenmar Lodge, Inc.

Cass County, Minnesota, for Taxes for the Year 1963.

Table with columns: VALUATIONS BY SCHOOL DISTRICTS AS EQUALIZED BY DEPARTMENT OF TAXATION, Tax including State Homestead, SPECIAL TAXES, TOTAL TAXES, PAID, WHEN PAID, Number of Receipt, March Settlement 1964, June Settlement 1964, November Settlement 1964, Penalty, Collections to First Monday in January 1965, Delinquent on First Monday in January 1965, Total Delinquent Tax and Penalty, and REMARKS. Includes handwritten entries for various tax payments and dates.

Assessment Roll and Tax List of Real Property in the Town of Waldo

* Indicate Type of Property: R-Residential, C-Commercial, I-Industrial, U-Utility, F-Farm, L-Lakeshore, T-Timber, M-Mineral

Table with columns: IN WHOSE NAME ASSESSED, DESCRIPTION OF PROPERTY, TRUE AND FULL VALUATIONS, ASSESSED VALUATIONS, and FINAL EQUALIZED VALUE. Includes entries for S.M. & Marie Robinson, Joan J. Speicher, and Northern Pacific Railway Co.

Cass County, Minnesota, for Taxes for the Year 1963.

Table with columns: SOLD FOR TAXES, VALIDATIONS BY SCHOOL DISTRICTS AS EQUALIZED BY DEPARTMENT OF TAXATION, Tax including State Homestead, State Tax on Non-Homestead, SPECIAL TAXES, TOTAL TAXES, PAID, WHEN PAID, Number of Receipt, March Settlement 1964, June Settlement 1964, Penalty, November Settlement 1964, Collections to First Monday in January 1965, Delinquent on First Monday in January 1965, Total Delinquent Tax and Penalty, and REMARKS. Includes handwritten notes like 'date # 94 93' and '104 96'.

Assessment Roll and Tax List of Real Property in the Town of Wahdo

* Indicate Type of Property: R-Residential, C-Commercial, I-Industrial, U-Utjity, F-Farm, L-Lakeshore, T-Timber, M-Mineral

Table with columns: IN WHOSE NAME ASSESSED, DESCRIPTION OF PROPERTY, TRUE AND FULL VALUATIONS, ASSESSED VALUATIONS, and FINAL EQUALIZED VALUE. Includes entries for David J. & June E. Dikens, Joseph B. & Byrle E. Harris, Mrs. Wilma Larrabee, etc.

Cass County, Minnesota, for Taxes for the Year 1963.

Table with columns: SOLD FOR TAXES, VALUATIONS BY SCHOOL DISTRICTS AS EQUALIZED BY DEPARTMENT OF TAXATION, Tax including State Homestead, State Tax on Non-Homestead, SPECIAL TAXES, TOTAL TAXES, PAID, WHEN PAID, Number of Receipt, March Settlement 1964, June Settlement 1964, November Settlement 1964, Collections to First Monday in January 1965, Delinquent on First Monday in January 1965, Total Delinquent Tax and Penalty, REMARKS. Includes entries for David J. & June E. Dikens, Joseph B. & Byrle E. Harris, etc.

Assessment Roll and Tax List of Real Property in the Town of Wabed

Cass County, Minnesota, for Taxes for the Year 1963.

* Indicate Type of Property: R-Residential, C-Commercial, I-Industrial, U-Utility, F-Farm, L-Lakeshore, T-Timber, M-Mineral

Table with columns: IN WHOSE NAME ASSESSED, DESCRIPTION OF PROPERTY, TRUE AND FULL VALUATIONS, ASSESSED VALUATIONS, VALUATIONS BY SCHOOL DISTRICTS AS EQUALIZED BY DEPARTMENT OF TAXATION, TAX INCLUDING STATE HOMESTEAD, SPECIAL TAXES, TOTAL TAXES, PAID, WHEN PAID, Number of Receipt, March Settlement 1964, June Settlement 1964, Penalty, November Settlement 1964, Collections to First Monday in January 1965, Delinquent on First Monday in January 1965, Total Delinquent Tax and Penalty, REMARKS.

Jerry E. & Joann D. Lynch

Robert Ford Love Jordan

Ole O. & Clara E. Tolleferud

Roy W. Pedersen - indiv. 1/2 int. Lawrence & Hazel R. Marine - indiv. 1/2 int.

State of Minnesota

Joe A. & Bertrude A. Scanlon

Margaret A. Pratt

State of Minnesota

Orvell O. Schei

State of Minnesota

State of Minnesota

State of Minnesota

State of Minnesota

State of Minnesota

State of Minnesota

State of Minnesota

20407

20474

Cancel # 4886 20684

Cancel # 3078

18243 20526

18244 20425

18245 20527

20528

Cancel 79.64

23432

W 54 457 511 1482 = 1536 822 = 1279 2304 = 2815 12030 58838 70868 1138 12006

39122 24920

Assessment Roll and Tax List of Real Property in the Town of Wahdo

Cass County, Minnesota, for Taxes for the Year 1963.

Indicate Type of Property: R-Residential, C-Commercial, I-Industrial, U-Utility, F-Farm, L-Lakeshore, T-Timber, M-Mineral

Table with columns: IN WHOSE NAME ASSESSED, DESCRIPTION OF PROPERTY, TRUE AND FULL VALUATIONS, ASSESSED VALUATIONS, FINAL EQUALIZED VALUE.

Table with columns: VALUATIONS BY SCHOOL DISTRICTS AS EQUALIZED BY DEPARTMENT OF TAXATION, TAX INCLUDING STATE HOMESTEAD, SPECIAL TAXES, PAID, WHEN PAID, Number of Receipt, March Settlement 1964, June Settlement 1964, November Settlement 1964, Collections to First Monday in January 1965, Delinquent on First Monday in January 1965, Total Delinquent Tax and Penalty, REMARKS.

Handwritten entries for property owners: State of Minnesota, Edward J & Marie Milbert Sipe, Jerome Browne, Eugene R. Kutschick.

Handwritten tax payment notes: 2nd HALF PAID SEP 3 1964, 1st HALF PAID APR 30 1964, 2nd HALF PAID SEP 3 1964, 1st HALF PAID APR 30 1964, 2nd HALF PAID OCT 29 1964, 1st HALF PAID MAY 15 1964.

Assessment Roll and Tax List of Real Property in the Town of Wabedo

Cass County, Minnesota, for Taxes for the Year 1963.

* Indicate Type of Property: R-Residential, C-Commercial, I-Industrial, U-Utility, F-Farm, L-Lakeshore, T-Timber, M-Mineral

Table with columns: IN WHOSE NAME ASSESSED, DESCRIPTION OF PROPERTY, TRUE AND FULL VALUATIONS, ASSESSED VALUATIONS, VALUATIONS BY SCHOOL DISTRICTS AS EQUALIZED BY DEPARTMENT OF TAXATION, TAX INCLUDING STATE HOMESTEAD, SPECIAL TAXES, TOTAL TAXES, PAID, WHEN PAID, Number of Receipt, March Settlement 1964, June Settlement 1964, November Settlement 1964, Collections to First Monday in January 1965, Delinquent on First Monday in January 1965, Total Delinquent Tax and Penalty, REMARKS.

John S. & Elizabeth Gaines

Robert D. & Janet Gaines

John S. & Elizabeth Gaines

Joseph F. & Gertrude Sears

Fred G. & Lucie M. Diesche

The Board of North Central Area Council of the National Council of Young Men's Christian Assoc.

The Board of North Central Area Council of the National Council of Young Men's Christian Assoc.

VALUED SPRINGS, A. POORE, MAIER'S ADD'N, VALUED GRAYMAN BRIDGE, BRIDGE, MAIER'S

Assessment Roll and Tax List of Real Property in the Town of Wabedo

* Indicate Type of Property: R-Residential, C-Commercial, I-Industrial, U-Utility, F-Farm, L-Lakeshore, T-Timber, M-Mineral

Form 5CD - MILLER-DAVIS CO., MINNEAPOLIS

Table with columns: IN WHOSE NAME ASSESSED, DESCRIPTION OF PROPERTY, TRUE AND FULL VALUATIONS, ASSESSED VALUATIONS, and FINAL EQUALIZED VALUE.

(Cont. on next page)

Cass County, Minnesota, for Taxes for the Year 1963.

Table with columns: VALUATIONS BY SCHOOL DISTRICTS AS EQUALIZED BY DEPARTMENT OF TAXATION, TAX INCLUDING STATE HOMESTEAD, SPECIAL TAXES, TOTAL TAXES, PAID, WHEN PAID, Number of Receipt, March Settlement, June Settlement, November Settlement, Collections to First Monday in January 1965, Delinquent on First Monday in January 1965, Total Delinquent Tax and Penalty, REMARKS.

Vertical text on the right edge of the page, including 'MINNESOTA STATE BOARD OF TAXATION' and other administrative markings.

Assessment Roll and Tax List of Real Property in the Town of Wabedo

* Indicate Type of Property: R-Residential, C-Commercial, I-Industrial, U-Utility, F-Farm, L-Lakeshore, T-Timber, M-Mineral

Cass County, Minnesota, for Taxes for the Year 1963.

Table with columns: IN WHOSE NAME ASSESSED, DESCRIPTION OF PROPERTY, TRUE AND FULL VALUATIONS, ASSESSED VALUATIONS, VALUATIONS BY SCHOOL DISTRICTS AS EQUALIZED BY DEPARTMENT OF TAXATION, TAX INCLUDING STATE HOMESTEAD, SPECIAL TAXES, TOTAL TAXES, PAID, WHEN PAID, Number of Receipt, March Settlement 1964, June Settlement 1964, Penalty, November Settlement 1964, Penalty, Collections to First Monday in January 1965, Penalty, Delinquent on First Monday in January 1965, Total Delinquent Tax and Penalty, REMARKS.

Assessment Roll and Tax List of Real Property in the Town of Wabedo

* Indicate Type of Property: R-Residential, C-Commercial, I-Industrial, U-Utility, F-Farm, L-Lakeshore, T-Timber, M-Mineral

Form 5CD MILLER-DAVIS CO., MINNEAPOLIS

Table with columns: IN WHOSE NAME ASSESSED, DESCRIPTION OF PROPERTY, TRUE AND FULL VALUATIONS, ASSESSED VALUATIONS, and FINAL EQUALIZED VALUE. Includes handwritten entries for various property owners like George A. + Pearl V. Wytchaley and Edward E. + Olga M. Eppley.

Cont. on Part Page

Cass County, Minnesota, for Taxes for the Year 1963.

Table with columns: SOLD FOR TAXES, VALUATIONS BY SCHOOL DISTRICTS AS EQUALIZED BY DEPARTMENT OF TAXATION, Tax including State Homestead, State Tax on Non-Homestead, SPECIAL TAXES, TOTAL TAXES, PAID, WHEN PAID, Number of Receipt, March Settlement 1964, June Settlement 1964, Penalty, November Settlement 1964, Penalty, Collections to First Monday in January 1965, Delinquent on First Monday in January 1965, Total Delinquent Tax and Penalty, and REMARKS. Includes handwritten entries for various property owners and tax payment details.

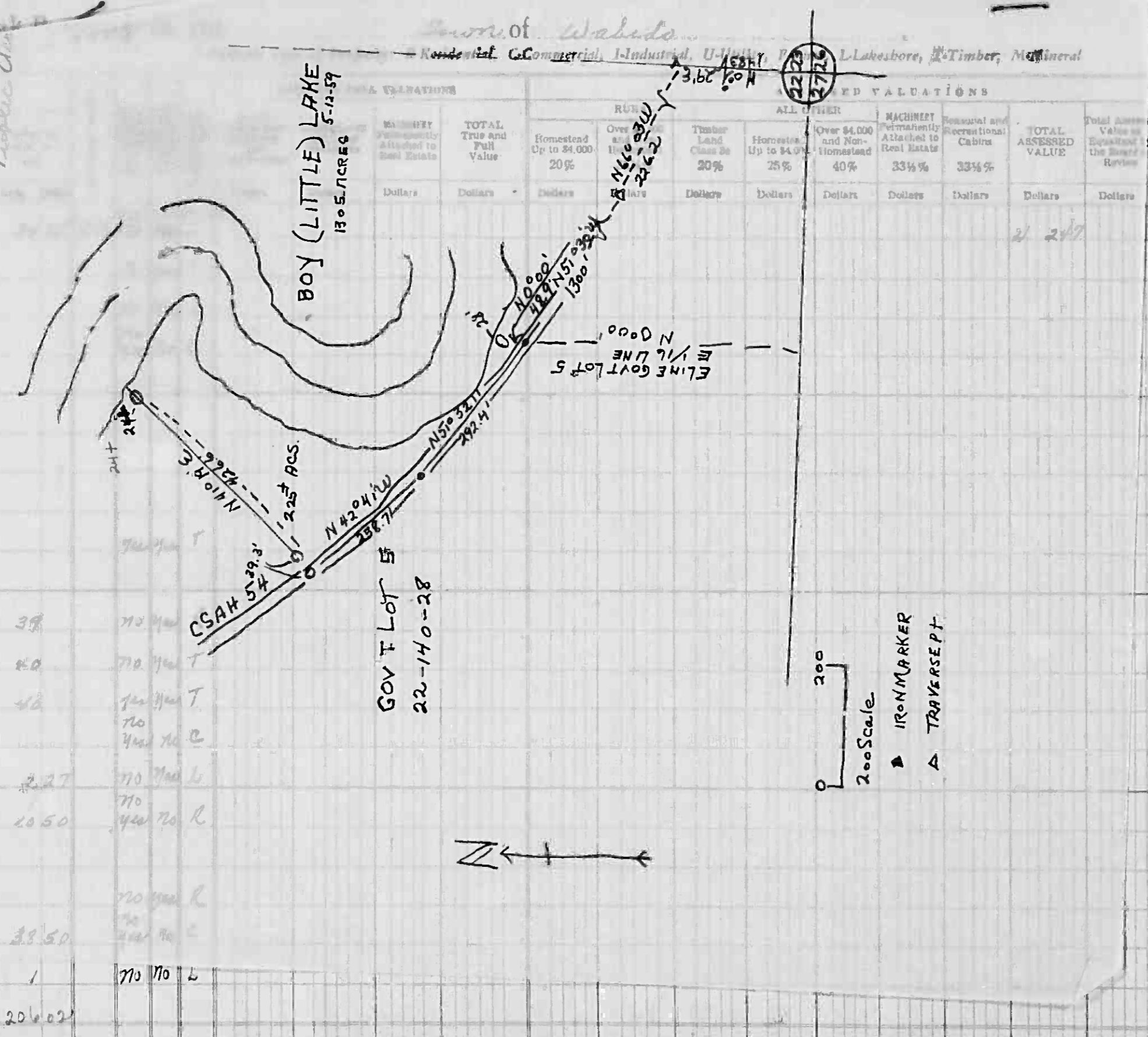
Assessment Roll and Tax List

Cass County, Minnesota, for Taxes for the Year 1963.

Form SCD MILLER-DAVIS CO., MINNEAPOLIS

IN WHOSE NAME ASSESSED	DESCRIPTION OF PROPERTY	Sub L
Frank E. & Helen R. Borgen	1 GOV'T LOT 7 less 5.84'	2
Thomas J. & Mae Rose McKewen	2 5.84' of GOV'T LOT 7	
Margaret J. Berg	3 Part of GOV'T LOT 7	
Lyle H. & Helen Craddock	4 GOV'T LOT 1 less 1 ac. to Wabedo tw	
Wabedo Twp.	5 1 acre of GOV'T LOT 1	
State of Minnesota	6 N 1/4 of NW 1/4	
State of Minnesota	7 N 1/4 of NW 1/4	
State of Minnesota	8 SW 1/4 of NW 1/4	
Lyle H. & Helen Craddock	9 GOV'T LOT 2	
Michael & Ann M. Semotik	10 Part of GOV'T LOT 4	
Ray F. Mace	11 GOV'T LOT 3	
"	12 NW 1/4 of SW 1/4	
Wm. C. & Louise O. Lampman	13 SW 1/4 of SW 1/4	
"	14 GOV'T LOT 4 less Plat & less said	
B. B. & Marion J. Yessick	15 75' of GOV'T LOT 4	
Louis M. & Ruth P. Houser	16 all N. of road of GOV'T LOT 5 less 150' + less to sta	
State of Minnesota	17 Part of GOV'T LOT 5 N. of road	
Herman P. & Evelyn B. Peschken	18 150' of GOV'T LOT 5 N. of road	
Laura Clara & Weavers	19 all S. of road of GOV'T LOT 5 less 1 acre	
Michael & Ann M. Semotik	20 250' x 230' N. 73' along lake of GOV'T LOT 5	

Lot 5-23140-28 Public Acre



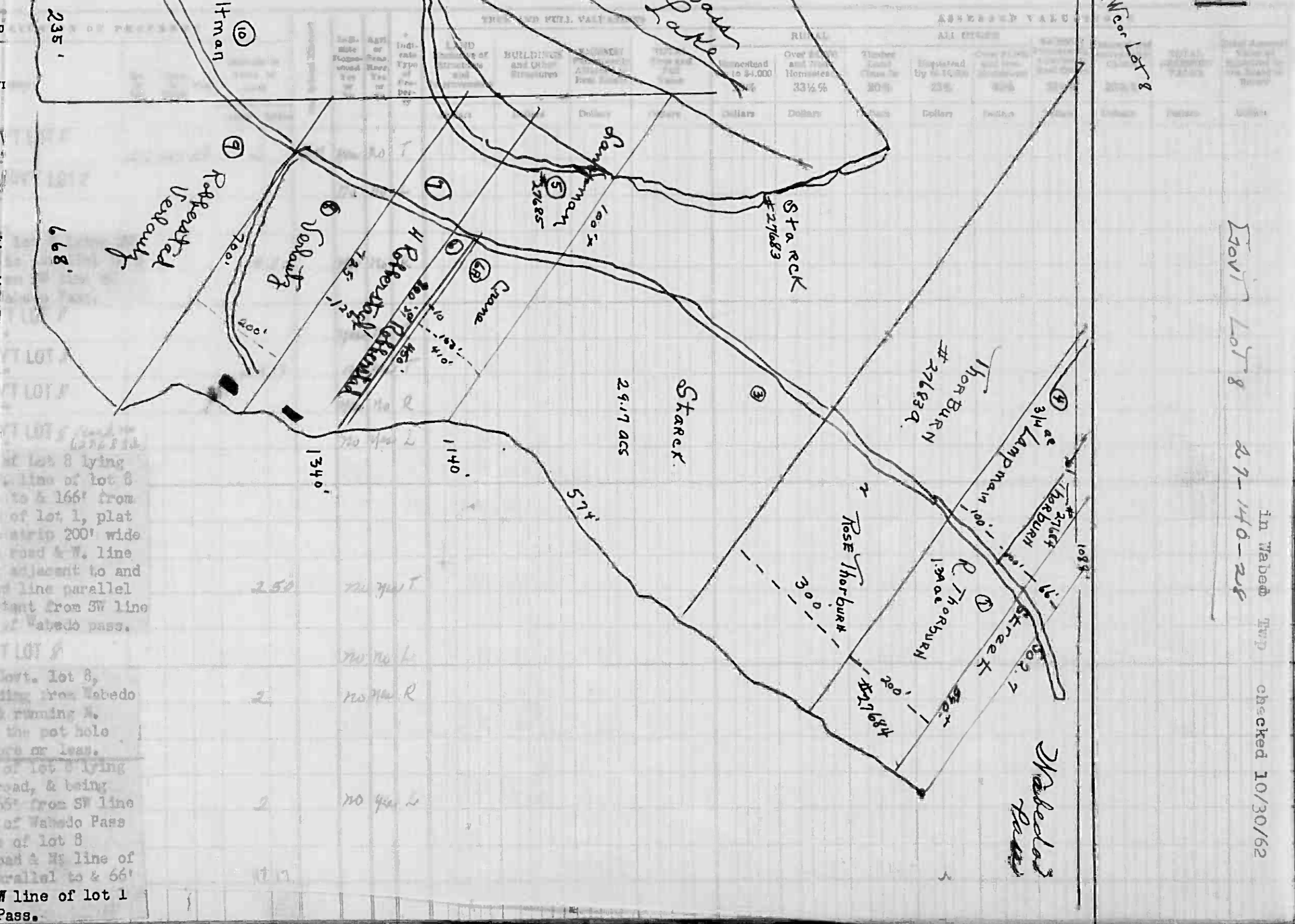
FINAL EQUALIZED VALUE

SOLD FOR TAXES	VALUATIONS BY SCHOOL DISTRICTS AS EQUALIZED BY DEPARTMENT OF TAXATION						Tax Including State Homestead Mills	State Tax on Non-Homestead	SPECIAL TAXES	SPECIAL TAXES	TOTAL TAXES	PAID	WHEN PAID	Number of Receipt	March Settlement 1964	June Settlement 1964	Penalty	November Settlement 1964	Penalty	Collections to First Monday in January 1965	Penalty	Delinquent on First Monday in January 1965	Total Delinquent Tax and Penalty	REMARKS	
	District No.	District No.	District No.	District No.	District No.	District No.																			
1	4	247					58.14				58.14	PAID IN FULL	SEP 29 1964	18070										20591	
2		40					9.42	36			9.78	PAID IN FULL	MAY 10 1964	9841		9.78								20607	
3		874					205.72	7.80			213.52	2nd HALF PAID	OCT 28 1964	19737									18277	20410	
4			570				467.34	7.24			478.58	2nd HALF PAID	MAY 29 1964	19109		106.76		106.76					18276	20592	
5																									
6																									
7																									
8																									
9		42					9.88				9.88	2nd HALF PAID	MAY 29 1964	19169		4.94		4.94					18276	20592	
10			249				191.28	2.68			197.96	2nd HALF PAID	OCT 27 1964	20446				98.98					18280	20593	
11	SOLD FOR TAXES	462					108.74	4.12			112.86												112.86	20689	
12	SOLD FOR TAXES	90					21.78	.80			22.98												21.98	"	
13		34					8.00				8.00	2nd HALF PAID	OCT 9 1964	18469		4.00		4.00					18308	20594	
14			270				68.96				68.96	1st HALF PAID	MAY 15 1964	9764		34.48		34.48					"	"	
15		264					62.14	2.36			64.50	PAID IN FULL	APR 23 1964	6780		64.50								20595	
16			294				100.62	.90			101.52	2nd HALF PAID	OCT 9 1964	19454		50.76		50.76					18282	20596	
17																									
18		460					108.28	4.10			112.38	2nd HALF PAID	OCT 31 1964	21299		56.19		56.19					18277	20597	
19			411				258.18	5.36			263.54	PAID IN FULL	MAY 15 1964	11072		263.54								20598	
20			51				13.02	.46			13.48	2nd HALF PAID	OCT 31 1964	20446		6.74		6.74					18280	20593	
		323	1545	1868			591.50	4.48			1735.08					939.96		660.28					134.84		
		290	2760	4950			1099.40																		
		2513	4305	6818			1690.90																		

Cont. on next page

Assessment Roll and Tax List of Real Property in the Town of Wabedo

Form 8CD - MILLER-DAVIS CO., MINNEAPOLIS



IN WHOSE NAME ASSESSED

1 Laura B. Roberstad

2 William C. & Luise L. Crane

3 Verlautz & Roberstad

6 Laura B. Roberstad

7 Adolph E. & Effie S. Starck

8 A. G. & Esther M. Verlautz

9 Rose Thorburn

William C. & Luise L. Crane

15 William C. & Luise L. Crane

Harm Oldman

Rose Thorburn

Subdivi

40' of GOV

160' of

SW 1/4 of NE 1/4 of a line which 1340' distant fr Lot 1, Plat of

Part of GOV

Part of GO

Part of GO

Part of GO

Strip 100' wide between road & line of lot 8 & being parallel to & 166' from extended SW line of lot 1, plat of Wabedo Pass & strip 200' wide of lot 8 between road & W. line of lot 8 & lying adjacent to and SW of an extended line parallel to and 1140' distant from SW line of lot 1 - plat of Wabedo pass.

Part of GOV

The W. 235' of Govt. lot 8, 27-110-28 extending from Wabedo lake on the S. Approx. 400' to the pot hole Cont. 2 acres more or less.

Strip 200' wide of lot 8 lying between lake & road, & being parrallel to & 166' from SW line of lot 1 - plat of Wabedo Pass & strip 100' wide of lot 8 lying between road & W. line of lot 8 & being parallel to & 66' from extended SW line of lot 1 Plat of Wabedo Pass.

FINAL VALUATION

Dollars

15017 Lot 8 27-110-28

In Wabedo Twp checked 10/30/62

Cass County, Minnesota, for Taxes for the Year 1963.

SOLD FOR TAXES	VALUATIONS BY SCHOOL DISTRICTS AS EQUALIZED BY DEPARTMENT OF TAXATION						Tax Including State Homestead	State Tax on Non-Homestead	SPECIAL TAXES	SPECIAL TAXES	TOTAL TAXES	PAID	WHEN PAID	Number of Receipt	March Settlement 1964	June Settlement 1964	Penalty	November Settlement 1964	Penalty	Collections to First Monday in January 1965	Penalty	Delinquent on First Monday in January 1965	Total Delinquent Tax and Penalty	REMARKS
	District No.	District No.	District No.	District No.	District No.	District No.																		
1							76				76	PAID IN FULL	APR 20 1964	6972										20624
2							7278	254			7532	PAID IN FULL	MAY 4 1964	11017		7532								20625
3											460													20626
4												2nd HALF PAID	JUL 27 1964	11134										20626
5												1st HALF PAID	MAY 22 1964	11453		230		230						20626
6							6896				6896	PAID IN FULL	APR 20 1964	6972		6896								20624
7							2590	98			2688	PAID IN FULL	APR 20 1964	6971		2688								20627
8											7048	2nd HALF PAID	JUL 27 1964	11134										20626
9											1412	1st HALF PAID	MAY 22 1964	11553		3524		3524						20628
10																								
11																								
12																								
13																								
14							588	22			610	2nd HALF PAID	OCT 9 1964	19449									18308	20598
15							1850	40			1190	1st HALF PAID	MAY 15 1964	9704		595		595						"
16							14216	538			14754	PAID IN FULL	MAY 22 1964	11549		14754								20629
17																								
18																								
19																								
20							18360	696			19056	PAID IN FULL	APR 7 1964	6670		19056								20628
							1579				61776					57132		4654						

Assessment Roll and Tax List of Real Estate in the Town of Wabado

Form SCD MILWAUKEE CO., MINNEAPOLIS

DESCRIPTION OF PROPERTY

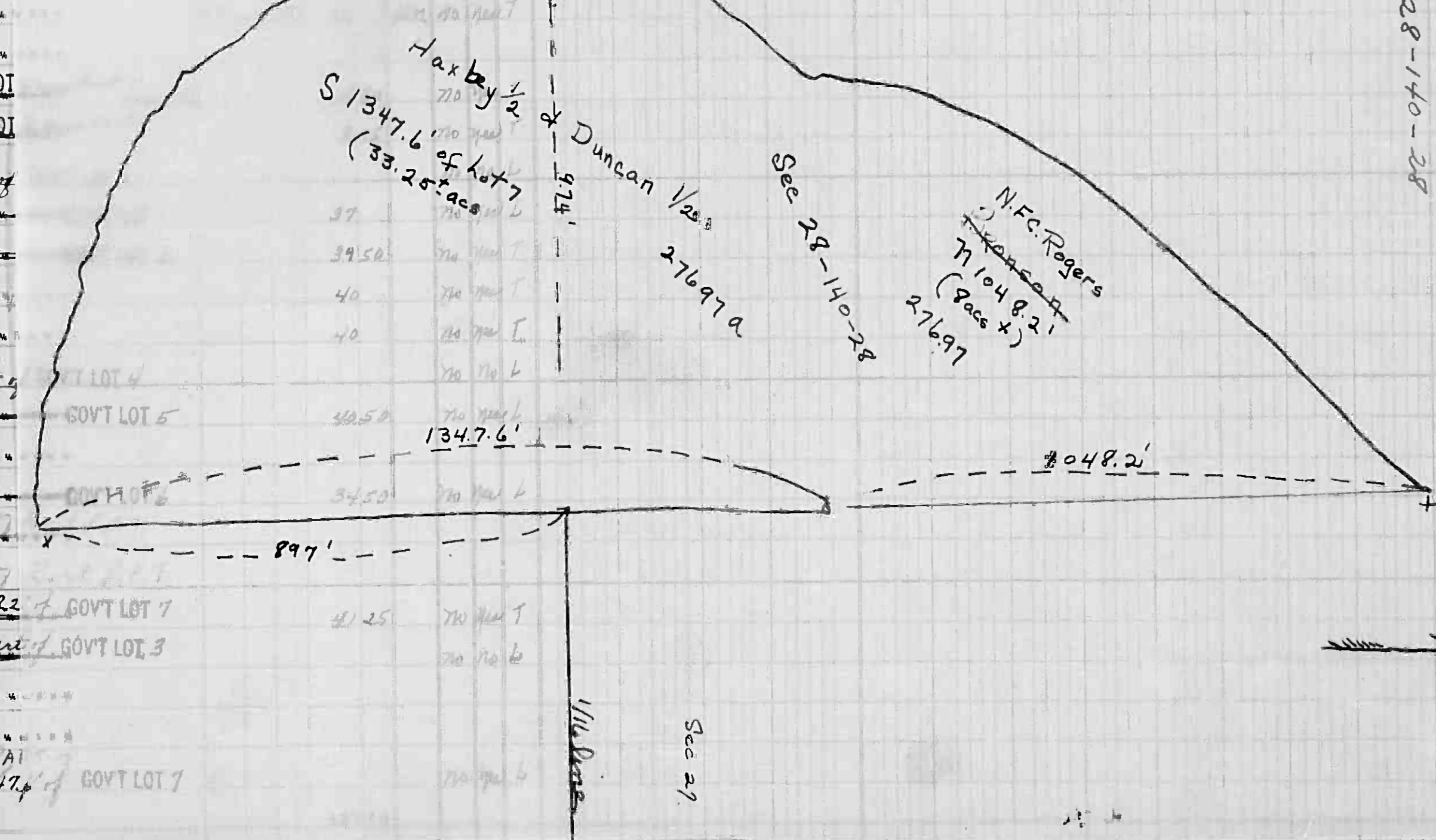
LAND

ASSESSED VALUATIONS

IN WHOSE NAME ASSESSED

SUBDIVISION

ASSESSED VALUATIONS: RURAL, ALL OTHER, HOMESTEAD, etc.



- 1 Wm. C. & Louise O. Lampman
- 2 State of Minnesota
- 3 Wm. A. & V. Beatrice Burnson
- 4 Robert E. & Ruth E. Chapman
- 5 Sam A. & Dorothy M. Rofstrom
- 6 B. E. Holman
- 7 " "
- 8 " "
- 9 " "
- 10 Arne N. & Carol Langsjoen
- 11 John Kenneth & Lois Neva Fisher
- 12 State of Minnesota
- 13 Harry J. & Nancy Obariski
- 14 Bernard V. & Mary Gray Hapby
- 15 Richard W. & Alice H. Duncan
- 16 Therman J. C. Rogerat
- 17 " "
- 18 " "
- 19 Richard W. & Alice H. Duncan 1/2 int.
- 20 Bernard V. & Mary Gray Hapby 1/2 int.

FINAL VALUED ALUE

1412, 1884, 706, 2554, 15536, 3060, 2118, 2118, 1532, 9180, 510, 12004, 160, 1532, 920, 3100

Cass County, Minnesota, for Taxes for the Year 1963.

SOLD FOR TAXES	VALUATIONS BY SCHOOL DISTRICTS AS EQUALIZED BY DEPARTMENT OF TAXATION						Tax Including State Homestead	State Tax on Non-Homestead	SPECIAL TAXES	SPECIAL TAXES	TOTAL TAXES	PAID	WHEN PAID	Number of Receipt	March Settlement 1964	June Settlement 1964	Penalty	November Settlement 1964	Penalty	Collections to First Monday in January 1965	Penalty	Delinquent on First Monday in January 1965	Total Delinquent Tax and Penalty	REMARKS	
	District No.	District No.	District No.	District No.	District No.	District No.																			
1	60					1412	54			1486	1	2nd HALF PAID OCT 9 1964 1846											1930	20574	
2											2	1st HALF PAID MAY 15 1964 974				733		733							
3	80					1884	72			1956	3	PAID IN FULL JUL 6 1964 1672						1956						20674	
4	30					706	26			732	4	PAID IN FULL JUL 6 1964 1672									732			20695	
5											5	2nd HALF PAID OCT 2 1964 1735											18214	20442	
6	660					15536	588			16124	6	1st HALF PAID MAY 29 1964 943				1322		1322					18272	20588	
7	130					3060	116			3176	7	2nd HALF PAID OCT 8 1964 19744													
8	90					2118	80			2198	8	1st HALF PAID MAY 29 1964 13016				11848		11848							
9	90					2118	80			2198	9	2nd HALF PAID OCT 8 1964 19744													
10											10	1st HALF PAID MAY 29 1964 13016													
11	390					9180	348			9528	11	2nd HALF PAID SEP 22 1964 1786				4764		4764					18292	20631	
12											12	1st HALF PAID APR 10 1964 6743													
13	510					12004	454			12458	13	Balance Paid OCT 23 1964 17613				6458		6458					18292	20632	
14											14	Part Paid OCT 18 1964 11235													
15											15														
16	160					3766	142			3908	16	PAID IN FULL FEB 3 1964												20633	
17											17	PAID IN FULL FEB 3 1964 1211				5494									
18											18														
19											19	Part Paid MAY 29 1964 12736				2872									
20	920					21184	802			21986	20	Part Paid MAY 12 1964 8289				7744		6498					4872		
	3100					72968	2960			81546		Part Paid FEB 14 1964 1917													
						5618						Balance Paid OCT 30 1964 20445				13038		36091					732		

2nd half 18289 - Bernard Hapby
Bernard Hapby - 20679
Richard Burnson 20670
Robert Hapby 20670

Assessment Roll and Tax List of Real Property in the Town of Wabedo

* Indicate Type of Property: R-Residential, C-Commercial, I-Industrial, U-Utility, F-Farm, L-Lakeshore, T-Timber, M-Mineral

Form 5CD MILLER-DAVIS CO., MINNEAPOLIS

Table with columns: IN WHOSE NAME ASSESSED, DESCRIPTION OF PROPERTY, TRUE AND FULL VALUATIONS, ASSESSED VALUATIONS, and FINAL EQUALIZED VALUE. Includes entries for State of Minnesota and Kiskapoo Lodge, Inc.

Cass County, Minnesota, for Taxes for the Year 1963.

Table with columns: SOLD FOR TAXES, VALUATIONS BY SCHOOL DISTRICTS AS EQUALIZED BY DEPARTMENT OF TAXATION, Tax including State Homestead, State Tax on Non-Homestead, SPECIAL TAXES, TOTAL TAXES, PAID, WHEN PAID, Number of Receipt, March Settlement 1964, June Settlement 1964, November Settlement 1964, Penalty, Collections to First Monday in January 1965, Delinquent on First Monday in January 1965, Total Delinquent Tax and Penalty, REMARKS. Includes entries for PAID IN FULL APR 20 1964.

Assessment Roll and Tax List of Real Property in the Town of Wabedo

Cass County, Minnesota, for Taxes for the Year 1963.

* Indicate Type of Property: R-Residential, C-Commercial, I-Industrial, U-Utility, F-Farm, L-Lakeshore, T-Timber, M-Mineral

Table with columns for IN WHOSE NAME ASSESSED, DESCRIPTION OF PROPERTY, TRUE AND FULL VALUATIONS, ASSESSED VALUATIONS, VALUATIONS BY SCHOOL DISTRICTS AS EQUALIZED BY DEPARTMENT OF TAXATION, TAX INCLUDING STATE HOMESTEAD, SPECIAL TAXES, TOTAL TAXES, PAID, WHEN PAID, Number of Receipt, March Settlement 1964, June Settlement 1964, Penalty, November Settlement 1964, Penalty, Collections to First Monday in January 1965, Penalty, Delinquent on First Monday in January 1965, Total Delinquent Tax and Penalty, REMARKS.

Assessment Roll and Tax List of Real Property in the

Town of Wahedo

* Indicate Type of Property: R-Residential, C-Commercial, I-Industrial, U-Utility, F-Farm, L-Lakeshore, T-Timber, M-Mineral

Table with columns: IN WHOSE NAME ASSESSED, DESCRIPTION OF PROPERTY, TRUE AND FULL VALUATIONS, ASSESSED VALUATIONS, and FINAL EQUALIZED VALUE. Includes entries for Johnson, Woodruff, Sabaka, Wright, and Bjornberg families.

Cass County, Minnesota, for Taxes for the Year 1963.

Table with columns: VALUATIONS BY SCHOOL DISTRICTS AS EQUALIZED BY DEPARTMENT OF TAXATION, Tax including State Homestead, SPECIAL TAXES, TOTAL TAXES, PAID, WHEN PAID, and REMARKS. Includes handwritten notes like 'Abate #9258' and 'PAID IN FULL'.

Assessment Roll and Tax List of Real Property in the Town of Wabeka

* Indicate Type of Property: R-Residential, C-Commercial, I-Industrial, U-Utility, F-Farm, L-Lakeshore, T-Timber, M-Mineral

Form 50 MILLER-DAVIS CO., MINNEAPOLIS

Table with columns: IN WHOSE NAME ASSESSED, SUBDIVISION, Description of Property, True and Full Valuations, Assessed Valuations (Rural, All Other, Machinery, Seasonal and Recreational Cabins, Total Assessed Value), Final Equalized Value.

Leonard & Idas Tabaka

Island View
Sec of Lot, Town or Block, Rng., Number of Acres of Land

Wm, 70, 110, L

Summary row for the first section: 147, 74, 3756, 132, 3888

Cass County, Minnesota, for Taxes for the Year 1963.

Table with columns: Sold for Taxes, Valuations by School Districts, Tax Including State, State Tax on Non-Homestead, Special Taxes, Total Taxes, PAID, WHEN PAID, Number of Receipt, March Settlement, June Settlement, November Settlement, Collections to First Monday in January, Delinquent on First Monday in January, Total Delinquent Tax and Penalty, REMARKS.

Abate #19258

2nd HALF PAID AUG 13 1964
1st HALF PAID MAY 27 1964
2nd HALF PAID AUG 13 1964
1st HALF PAID MAY 27 1964

Summary row for the second section: 147, 74, 3756, 132, 3888, 1308, 1308, 12.72 Abate

Assessment Roll and Tax List of Real Property in the Town of Wabedo

* Indicate Type of Property: R-Residential, C-Commercial, I-Industrial, U-Utility, F-Farm, L-Lakeshore, T-Timber, M-Mineral

Form 50 MILLER-DAVIS CO., MINNEAPOLIS

Table with columns: IN WHOSE NAME ASSESSED, DESCRIPTION OF PROPERTY, TRUE AND FULL VALUATIONS, ASSESSED VALUATIONS, FINAL EQUALIZED VALUE. Includes entries for Willis H. & Daisy B. Mander and Clyde D. & Henrietta Merlat.

Cass County, Minnesota, for Taxes for the Year 1963.

Table with columns: SOLD FOR TAXES, VALUATIONS BY SCHOOL DISTRICTS AS EQUALIZED BY DEPARTMENT OF TAXATION, SPECIAL TAXES, TOTAL TAXES, PAID, WHEN PAID, Number of Receipt, March Settlement 1964, June Settlement 1964, November Settlement 1964, Collections to First Monday in January 1965, Delinquent on First Monday in January 1965, Total Delinquent Tax and Penalty, REMARKS. Includes handwritten notes like 'PAID IN FULL JUN 25 1964'.

Assessment Roll and Tax List of Real Property in the Town of Wabedo

* Indicate Type of Property: R-Residential, C-Commercial, I-Industrial, U-Utility, F-Farm, L-Lakeshore, T-Timber, M-Mineral

Form 50 - MILLER-DAVIS CO., MINNEAPOLIS

Table with columns: IN WHOSE NAME ASSESSED, DESCRIPTION OF PROPERTY, TRUE AND FULL VALUATIONS, ASSESSED VALUATIONS, FINAL EQUALIZED VALUE. Includes entries for Mander's Broadwater Beach Subdivision with handwritten names like Ralph A. & Selma O. & Willis H. & Daisy Manders.

Cass County, Minnesota, for Taxes for the Year 1963.

Table with columns: VALUATIONS BY SCHOOL DISTRICTS AS EQUALIZED BY DEPARTMENT OF TAXATION, TAX INCLUDING STATE HOMESTEAD, SPECIAL TAXES, TOTAL TAXES, PAID, WHEN PAID, Number of Receipt, March Settlement 1964, June Settlement 1964, November Settlement 1964, Penalty, Collections to First Monday in January 1965, Delinquent on First Monday in January 1965, Total Delinquent Tax and Penalty, REMARKS. Includes handwritten tax amounts and payment dates.

Vertical text on the left margin: MANDER'S BEACH, CREST ACRES, BIRCH HAVEN, MUSKIE BEACH

