

ASSESSMENT & TALENT DEVELOPMENT
Wabedo

COLLECTIONS OF TAXES OF 1962 *Town of* *Wadena* OF *Wadena* CASS COUNTY, MINNESOTA

FUNDS	MARCH SETTLEMENT 1962	JUNE SETTLEMENT 1962	NOV. SETTLEMENT 1962	Amount Collected from Nov. 1962 to First Monday in Jan. 1963	REDUCTIONS	Total Reductions and Collected	BALANCE UNCOLLECTED	ADDITIONS	Total Uncollected to First Monday in January, 1963
State-Non-Homestead, State-Homestead.	52 96 55 45	646 43 731 29	244 18 261 68	51 23 56 83					
County Revenue, County Road and Bridge, County Welfare, County Jail and Interest, PERA Co. Nurse C. N. Bldg.	510 11 318 12 791 18 217 44 84 14 14 47 31 81	2854 03 1779 89 4426 55 1216 54 470 78 80 98 177 97	1341 49 836 60 2080 62 571 81 221 28 38 07 83 66	21930 13676 34013 9349 3618 623 1368					
Town Revenue, Town Road and Bridge, Town State Loan, Civ. Def. Ague. Assn.	79 53 67 61 5 89 7 96	444 97 378 22 32 94 44 51	209 15 177 78 15 47 20 91	3409 2906 253 342					
School Local 1 Mill, School Special, School State Loan, Deficiency Frisson C. O. Transportation	587 59 1 099 12 213 45 15 27	2583 55 6149 46 1194 30 85 44	1316 94 2890 45 561 36 40 16	18781 47252 9177 656					
	4152 10	23297 84	11011 41	178169					

	School District No.	LOCAL 1 MILL	SPECIAL	STATE LOAN	Deficiency	C. O.	TOTALS
MARCH SETTLEMENT	Wadena Wadena		48 66 538 93		168 12 931 00	32 65 180 80	249 43 1650 73
	Totals		587 59		1099 12	213 45	1900 16
JUNE SETTLEMENT	Wadena Wadena		976 20 1607 35		3372 76 2776 70	655 03 539 27	5003 99 4923 32
	Totals		2583 55		6149 46	1194 30	9927 31
NOVEMBER SETTLEMENT	Wadena Wadena		356 45 960 29		1231 55 1658 90	239 18 322 18	1827 18 2944 37
	Totals		1316 74		2890 45	561 36	4725 2
NOVEMBER to JANUARY	W. A. W. N.		8572 10209		29616 17636	5752 3425	43940 31270
	Totals		18781		47252	9177	75210
ADDITIONS	School District No.						
	Totals						
REDUCTIONS	School District No.						
	Totals						

Real Estate
Wadena Pass
Springs
Iowa Point
Addition
Harker's
Winnie Chapman
Beach
Stuart's
Mehler's
Kuskie Bay

Assessment Roll and Tax List of Real Property in the Town of Habedo

Cass County, Minnesota, for Taxes for the Year 1962.

Form 301 Miller-Davis Co., Minneapolis * Indicate Type of Property: R-Residential, C-Commercial, I-Industrial, U-Utility, F-Farm, L-Lakeshore, T-Timber, M-Mineral

Real Estate

Table with columns: IN WHOSE NAME ASSESSED, DESCRIPTION OF PROPERTY, TRUE AND FULL VALUATIONS, ASSESSED VALUATIONS, VALUATIONS BY SCHOOL DISTRICTS AS EQUALIZED BY DEPARTMENT OF TAXATION, TAXES, PAID, WHEN PAID, Number of Receipt, March Settlement 1963, June Settlement 1963, November Settlement 1963, Collections to First Monday in January 1964, Delinquent on First Monday in January 1964, Total Delinquent Tax and Penalty, REMARKS.

Vertical text on the right edge of the page: Fass Springs, Iowa Point Addition, Winton Chapman Beach, Sturges, Mankie Bay

Assessment Roll and Tax List of Real Property in the Town of Wabedo

Form SCID MILLER-DAVIS CO., MINNEAPOLIS

* Indicate Type of Property: R-Residential, C-Commercial, I-Industrial, U-Utility, F-Farm, L-Lakeshore, T-Timber, M-Mineral

Cass County, Minnesota, for Taxes for the Year 1962.

Table with columns: IN WHOSE NAME ASSESSED, DESCRIPTION OF PROPERTY, TRUE AND FULL VALUATIONS, ASSESSED VALUATIONS, VALUATIONS BY SCHOOL DISTRICTS AS EQUALIZED BY DEPARTMENT OF TAXATION, TAXES, PAID, WHEN PAID, Number of Receipt, March Settlement 1963, June Settlement 1963, November Settlement 1963, Collections to First Monday in January 1964, Delinquent on First Monday in January 1964, Total Delinquent Tax and Penalty, REMARKS.

Real Estate

Wabedo Springs, Iowa Point, Addicks, Wabedo's Chairman, Stuart's Beach, Wabedo's Muskie Bay

Assessment Roll and Tax List of Real Property in the Town of Habado

Form 502 MILLER-DAVIS CO., MINNEAPOLIS

* Indicate Type of Property: R-Residential, C-Commercial, I-Industrial, U-Utility, F-Farm, L-Lakeshore, T-Timber, M-Mineral

Table with columns: IN WHOSE NAME ASSESSED, DESCRIPTION OF PROPERTY, TRUE AND FULL VALUATIONS, ASSESSED VALUATIONS, and FINAL EQUALIZED VALUE. Includes entries for S M and Marie Robinson and Northern Pacific Railway Company.

Cass County, Minnesota, for Taxes for the Year 1962.

Table with columns: SOLD FOR TAXES, VALUATIONS BY SCHOOL DISTRICTS AS EQUALIZED BY DEPARTMENT OF TAXATION, Tax Including State Homestead, State Tax on Non-Homestead, SPECIAL TAXES, TOTAL TAXES, PAID, WHEN PAID, Number of Receipt, March Settlement, June Settlement, November Settlement, Collections to First Monday in January, Delinquent on First Monday in January, Total Delinquent Tax and Penalty, and REMARKS. Includes handwritten notes and calculations.

Pass Springs Habado Iowa Point Auditor's Addition Beach Vander's Winnie Chairman Stuer's Vander's Auker's Bay

Assessment Roll and Tax List of Real Property in the Town of Habedo

Cass County, Minnesota, for Taxes for the Year 1962.

Form SCD-MILLER-DAVIS CO., MINNEAPOLIS

* Indicate Type of Property: R-Residential, C-Commercial, I-Industrial, U-Utility, F-Farm, L-Lakeshore, T-Timber, M-Mineral

Table with columns: IN WHOSE NAME ASSESSED, DESCRIPTION OF PROPERTY, TRUE AND FULL VALUATIONS, ASSESSED VALUATIONS, VALUATIONS BY SCHOOL DISTRICTS AS EQUALIZED BY DEPARTMENT OF TAXATION, TAXES, PAID, WHEN PAID, Number of Receipt, March Settlement 1963, June Settlement 1963, November Settlement 1963, Collections to First Monday in January 1964, Delinquent on First Monday in January 1964, Total Delinquent Tax and Penalty, REMARKS.

Ester M. Glisar

Clara Nadreau

Russell and Betty J. Ewaldt

Florence Sarah Jordan

Reuben H. and Ethel B. Baletack - 1/8 int. Bertrud and Leo J. Loh - 1/8 int. Hazel L. and Tom R. Loh - 1/8 int. Glenn Hall - 1/8 int.

Vertical text on the right edge of the page, including 'Haber's Addition Beach' and other property-related notes.

Assessment Roll and Tax List of Real Property in the Town of Habedo

Form 301 MILLER-DAVIS CO., MINNEAPOLIS

* Indicate Type of Property: R-Residential, C-Commercial, I-Industrial, U-Utility, F-Farm, L-Lakeshore, T-Timber, M-Mineral

Cass County, Minnesota, for Taxes for the Year 1962.

Table with columns: IN WHOSE NAME ASSESSED, DESCRIPTION OF PROPERTY, TRUE AND FULL VALUATIONS, ASSESSED VALUATIONS, VALUATIONS BY SCHOOL DISTRICTS AS EQUALIZED BY DEPARTMENT OF TAXATION, TAXES, PAID, WHEN PAID, Number of Receipt, March Settlement 1963, June Settlement 1963, November Settlement 1963, Collections to First Monday in January 1964, Delinquent on First Monday in January 1964, Total Delinquent Tax and Penalty, REMARKS.

Assessment Roll and Tax List of Real Property in the Town of Habedo

Form 5C1 MILLER-DAVIS CO., MINNEAPOLIS

* Indicate Type of Property: R-Residential, C-Commercial, I-Industrial, U-Utility, F-Farm, L-Lakeshore, T-Timber, M-Mineral

Table with columns: IN WHOSE NAME ASSESSED, DESCRIPTION OF PROPERTY, TRUE AND FULL VALUATIONS (RURAL, ALL OTHER, MACHINERY, etc.), TOTAL ASSESSED VALUE, FINAL EQUALIZED VALUE.

Cass County, Minnesota, for Taxes for the Year 1962.

Table with columns: SOLD FOR TAXES, VALUATIONS BY SCHOOL DISTRICTS AS EQUALIZED BY DEPARTMENT OF TAXATION, Tax Including State Homestead, SPECIAL TAXES, TOTAL TAXES, PAID, WHEN PAID, Number of Receipt, March Settlement, June Settlement, November Settlement, Delinquent on First Monday in January 1964, Total Delinquent Tax and Penalty, REMARKS.

NE 1/4 - SE 1/4 + LOT 8 - SEC. 19-140-26

LOT 8



1320'

1188'

RUNIONS

RUNIONS

11.7 ACS.

10 ACS?

LISKEY

24 ACS.

HY. # 64

545'

125'

NEBENDAHL

NEBENDAHL

3.6 ACS

16 ACS.

NE-SE

MULE LAKE

1320'

1122'

Assessment Roll and Tax List of Real Property in the Town of Wabedo, Cass County, Minnesota, for Taxes for the Year 1962.

Form 501 MILLER-DAVIS CO., MINNEAPOLIS

* Indicate Type of Property: R-Residential, C-Commercial, I-Industrial, U-Utility, F-Farm, L-Lakeshore, T-Timber, M-Mineral

Table with columns: IN WHOSE NAME ASSESSED, DESCRIPTION OF PROPERTY, TRUE AND FULL VALUATIONS, ASSESSED VALUATIONS, and FINAL EQUALIZED VALUE.

Table with columns: VALUATIONS BY SCHOOL DISTRICTS AS EQUALIZED BY DEPARTMENT OF TAXATION, TAX INCLUDING STATE HOMESTEAD, SPECIAL TAXES, TOTAL TAXES, PAID, WHEN PAID, and REMARKS.

Pass Springs, Wabedo, Iowa Point Addition, Vander's, Winale Chapman Beach, Sturte's Vander's Ancker Bay

Assessment Roll and Tax List of Real Property in the Town of Habedo

Form 501 - MILLER-DAVIS CO., MINNEAPOLIS

* Indicate Type of Property: R-Residential, C-Commercial, I-Industrial, U-Utility, F-Farm, L-Lakeshore, T-Timber, M-Mineral

Cass County, Minnesota, for Taxes for the Year 1962.

Table with columns: IN WHOSE NAME ASSESSED, DESCRIPTION OF PROPERTY, TRUE AND FULL VALUATIONS, ASSESSED VALUATIONS, and FINAL EQUALIZED VALUE. Includes entries for State of Minnesota and individuals like H.L. and Lucille H. Sholes.

(Cont. on next page)

Table with columns: VALUATIONS BY SCHOOL DISTRICTS AS EQUALIZED BY DEPARTMENT OF TAXATION, TAX INCLUDING STATE HOMESTEAD, SPECIAL TAXES, TOTAL TAXES, PAID, WHEN PAID, and REMARKS. Includes tax payment details and dates.

Vertical text on the right edge of the page: Habedo, Cass Springs, Iowa Point Addition, Vander's Beach, Winning Chapman, Stearns, Vander's Muskies Bay.

Assessment Roll and Tax List of Real Property in the Town of Nabedo

Form SCD-MILLER-DAVIS CO., MINNEAPOLIS

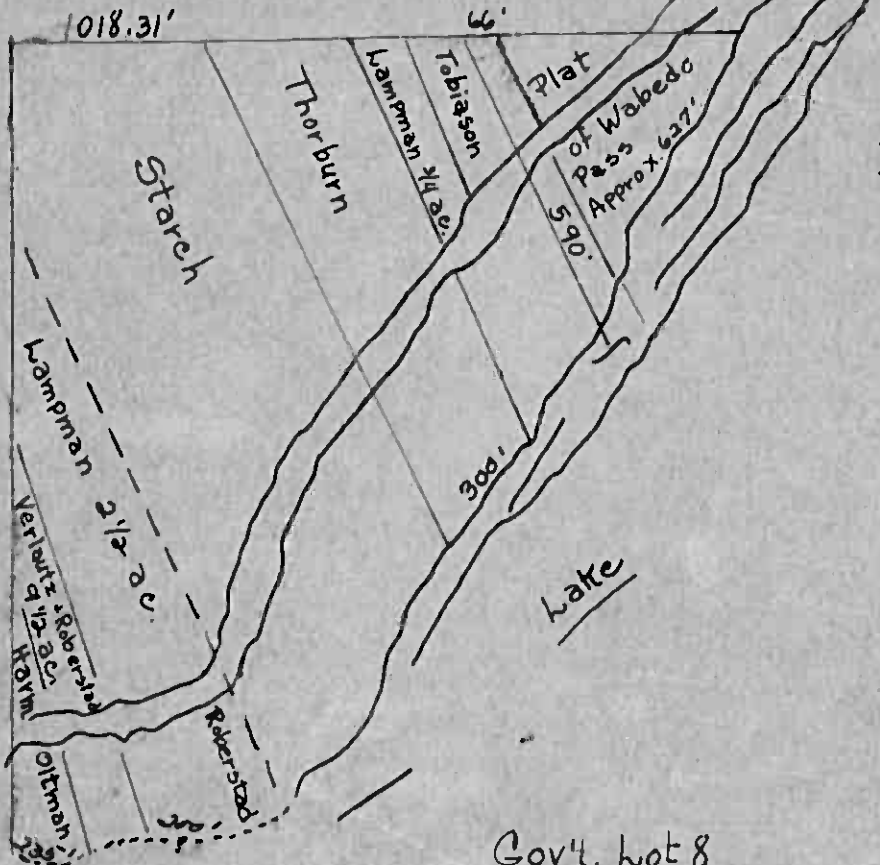
* Indicate Type of Property: R-Residential, C-Commercial, I-Industrial, U-Utility, F-Farm, L-Lakeshore, T-Timber, M-Mineral

Table with columns: IN WHOSE NAME ASSESSED, SUBDIVISION, Sec. or Lot, Town or Block, No. of Acres, TRUE AND FULL VALUATIONS (LAND, BUILDINGS, MACHINERY, TOTAL), ASSESSED VALUATIONS (RURAL, ALL OTHER), TOTAL ASSESSED VALUE, Total Assessed Value as Equalized by the Board of Review, FINAL EQUALIZED VALUE.

Cass County, Minnesota, for Taxes for the Year 1962.

Table with columns: SOLD FOR TAXES, VALUATIONS BY SCHOOL DISTRICTS AS EQUALIZED BY DEPARTMENT OF TAXATION (District No., Rate, etc.), Tax Including State Homestead, SPECIAL TAXES, TOTAL TAXES, PAID, WHEN PAID, Number of Receipt, March Settlement, June Settlement, November Settlement, Collections to First Monday in January, Delinquent on First Monday in January, Total Delinquent Tax and Penalty, REMARKS.

Pass Springs Nabedo Iowa Point Addition Vander's Winnie Chairman Beach Stuar's Vander's Muriel Day



018.31'

S.

Starch

Thorburn

Lammman 1/2 ac

Tobiasen

Plat

of Wabedo Pass
Approx. 627'
590'

Lammman 2 1/2 ac

Verletz 1/2 ac

Robert

Oltman

Robert

300'

Lake

I. Mon. on S.W.
cor. of Wabedo Pass.

Gov't. lot 8
Sec. 27-140-28

Assessment Roll and Tax List of Real Property in the Town of Shakeds

Cass County, Minnesota, for Taxes for the Year 1962.

Form SC-1 MILLER-DAVIS CO., MINNEAPOLIS

* Indicate Type of Property: R-Residential, C-Commercial, I-Industrial, U-Utility, F-Farm, L-Lakeshore, T-Timber, M-Mineral

Main table with columns: IN WHOSE NAME ASSESSED, SUBDIVISION, TRUE AND FULL VALUATIONS, ASSESSED VALUATIONS, VALUATIONS BY SCHOOL DISTRICTS AS EQUALIZED BY DEPARTMENT OF TAXATION, SPECIAL TAXES, PAID, WHEN PAID, Number of Receipt, March Settlement, June Settlement, November Settlement, Collections to First Monday in January, Delinquent on First Monday in January, Total Delinquent Tax and Penalty, REMARKS.

Handwritten names and addresses: Le. L. Leven, Levena Milling Company, Harold L. & Norma J. Blakeman, Emil and Anna Polka, Virgil and Dolores Rohwedder, C. E. and Ruth M. Paulsen, Harold L. and Norma J. Blakeman, State of Minnesota, Harold L. and Norma J. Blakeman, Levena Milling Company, B. H. and Lola M. Wyatt, Joe I. and Blanche P. Roscoe, Harold L. & Norma J. Blakeman, Harold C. and Fern Atwood.

Vertical text on the right edge: Cass Springs, Iowa Point Addition, Vander's, White Chapman, Stuart's, Vander's, Kuska's Bay.

Assessment Roll and Tax List of Real Property in the Town of Habedo, Cass County, Minnesota, for Taxes for the Year 1962.

* Indicate Type of Property: R-Residential, C-Commercial, I-Industrial, U-Utility, F-Farm, L-Lakeshore, T-Timber, M-Mineral

Cass County, Minnesota, for Taxes for the Year 1962.

Table with columns: IN WHOSE NAME ASSESSED, SUBDIVISION, Sec. of Lot, Town or Block, No. of Acres of Land, No. School District, Ind. Home, Agri. Rec., Ind. Type of Property, TRUE AND FULL VALUATIONS (LAND, BUILDINGS, MACHINERY, TOTAL), RURAL (Homestead, Over \$4,000, Timber Land, Over \$1,000), ALL OTHER (MACHINERY, Seasonal and Recreational Cabins, TOTAL ASSESSED VALUE), Total Assessed Value as Equalized by the Board of Review, FINAL EQUALIZED VALUE.

Table with columns: SOLD FOR TAXES, VALUATIONS BY SCHOOL DISTRICTS AS EQUALIZED BY DEPARTMENT OF TAXATION (District No., Rate, Mills), Tax Including State Homestead, State Tax on Non-Homestead, SPECIAL TAXES, TOTAL TAXES, PAID, WHEN PAID (Month, Day, Year), Number of Receipt, March Settlement 1963, June Settlement 1963, November Settlement 1963, Collections to First Monday in January 1964, Delinquent on First Monday in January 1964, Total Delinquent Tax and Penalty, REMARKS.

Real Estate

Kovaleff's Beach, Habedo Springs, Iowa Point Addition, Kander's, Winnie Chapman Beach, Sturtevant's, Kander's, Kuskie Bay

Assessment Roll and Tax List of Real Property in the Town of Wabedo

Cass County, Minnesota, for Taxes for the Year 1962.

Form 5-C-MILLER-DAVIS-CO., MINNEAPOLIS

* Indicate Type of Property: R-Residential, C-Commercial, I-Industrial, U-Utility, F-Farm, L-Lakeshore, T-Timber, M-Mineral

Table with columns: IN WHOSE NAME ASSESSED, SUBDIVISION, DESCRIPTION OF PROPERTY, TRUE AND FULL VALUATIONS, ASSESSED VALUATIONS, FINAL EQUALIZED VALUE.

Table with columns: VALUATIONS BY SCHOOL DISTRICTS, TAXES, PAID, WHEN PAID, Number of Receipt, March Settlement, June Settlement, November Settlement, Collections to First Monday, Delinquent on First Monday, Total Delinquent Tax and Penalty, REMARKS.

Wabedo Springs, Wabedo, Wabedo

Wabedo Springs, Wabedo, Wabedo

Assessment Roll and Tax List of Real Property in the Town of Habedo, Cass County, Minnesota, for Taxes for the Year 1962.

Cass County, Minnesota, for Taxes for the Year 1962.

Form 5C MILLER-DAVIS CO., MINNEAPOLIS

* Indicate Type of Property: R-Residential, C-Commercial, I-Industrial, U-Utility, F-Farm, L-Lakeshore, T-Timber, M-Mineral

Table with columns: IN WHOSE NAME ASSESSED, SUBDIVISION, DESCRIPTION OF PROPERTY, TRUE AND FULL VALUATIONS, ASSESSED VALUATIONS, VALUATIONS BY SCHOOL DISTRICTS AS EQUALIZED BY DEPARTMENT OF TAXATION, TAXES, PAID, WHEN PAID, SPECIAL TAXES, TOTAL TAXES, REMARKS.

Vertical text on the left margin: Habedo Springs, Iowa Point, Mander's Addition, Minnie Chapman Beach, Mander's Muskies Bay Beach.

Vertical text on the right margin: Habedo Springs, Iowa Point, Mander's Addition, Minnie Chapman Beach, Mander's Muskies Bay Beach.

