

Assessment & Tax List - 1961

Wabedo





NAME OF OWNER

TABULAR SCHEDULE OF VALUATIONS,

LEVIED IN THE Town OF Wabedo

RATES AND TAXES

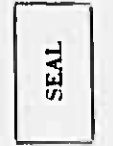
COUNTY OF CASS, STATE OF MINNESOTA

School District No.	VALUATION BY SCHOOL DISTRICTS				RATE OF STATE TAXES	RATE OF COUNTY TAXES							RATE OF TOWN TAXES							RATE OF			
	Agri-cultural Lands	Non-Agri-cultural Lands	Personal Property	Total Value of all Property except Money and Credits	Total Rate of State Tax	Rev.	R. & B.	Welfare	Bonds and Int.	Welfare	Total Rate of County Tax	Rev.	R. & B.	State Loan	Phone	Total Rate of Town Tax	Local	Special	State Loan	Deficiency	Tuition	Transportation	C.O. Pen
Un	48,294	38,613	17,180	104,087	6.39	36.36	20.57	3.37	10.89	5.67	134.97	3.37	6.73	7.69	17.79	20.	40.	82.17	82.17	16.39	16.39	6.56	6.56
					N.H. 9.12																		
					15.51																		
Assessed Value	Rural	All Other	Personal Property	Total																			
Homestead	14,743			14,743																			
Non-Homestead	72,164		17,180	89,344																			
Total	86,907		17,180	104,087																			

SCHOOL TAXES	LOCAL 1 MILL AND SPECIAL SCHOOL TAXES BY DISTRICTS										ALL OTHER TAXES		
Total Rate of Sch'l Tax	Total Rate of all Taxes	Local 1 Mill	Special	State Loan	Def. C.O. PERR	Total School Taxes	FUNDS	Rate	Amounts				
125.12	284.27					6042.55	State - Non-Homestead		714.79				
145.12	304.27					8096.68	State - Homestead		595.20				
						3197.60	County Revenue,		3836.60				
							County Road and Bridge,		2081.70				
							County Welfare,		5964.10				
							Bonds and Interest						
							Welfare Def. PERRA		1133.51				
									590.17				
							Town Revenue,		350.77				
							Town Road and Bridge,		700.50				
							Town State Loan,						
							Phone		800.43				
									1851.70				
							School Local 1 Mill,						
							School Special,		3197.60				
							School State Loan,						
							Deficiency		8552.83				
							Tuition						
							Transportation						
							C.O. PERRA		1705.99				
									682.81				
									14,139.23				

Total Number of Acres 7777.27  
 State of Minnesota, ss. H. C. Peterson  
 COUNTY OF CASS Auditor of said County and State aforesaid, do hereby certify that the foregoing is a true and correct Schedule, showing the valuation of all the taxable property, in the Town of Wabedo, in said County, the several rates of Taxation and Totals of the several Tax Funds levied thereon for the year A. D. 196 64  
 Witness my hand and official seal, this 28 day of December, A. D. 196 64  
H. C. Peterson County Auditor  
By Helen Billen, Deputy

Total Taxes Real Estate 26,134.92  
 Pers. Prop. 5214.44  
 Total 31,349.36



Assessment of

COLLECTIONS OF TAXES OF 1961

OF *Twin Lake*, CASS COUNTY, MINNESOTA

FUNDS	MARCH SETTLEMENT 19.6.2.	JUNE SETTLEMENT 19.6.2.	NOV. SETTLEMENT 19.6.2.	Amount Collected from Nov. 19.6.2. to First Monday in Jan. 19.6.2.	REDUCTIONS	Total Reductions and Collected	BALANCE UNCOLLECTED	ADDITIONS	Total Uncollected to First Monday in January, 19
State—Non-Homestead	5729	43661	16281	384					
State—Homestead	4350	36055	14909	287					
County Revenue	56984	212810	87279	1658					
County Road and Bridge	30919	115469	47357	400					
County Welfare	88383	330819	135678	2578					
County Bond and Interest	1685	6243	2580	49					
C. H. Bldg.	3092	11547	4737	90					
Agri. Assoc	773	2887	1184	22					
Civ. Def.	1020	3810	1563	30					
Town Revenue	5210	19457	7980	152					
Town Road and Bridge	10404	38855	15936	302					
Town State Loan									
<i>Phone</i>	11888	44398	18209	346					
School Local 1 Mill	57487	164256	75411	1268					
School Special									
School State Loan									
Deficiency	127031	474405	194567	3697					
Tuition C.O.	25339	44627	38809	738					
Transportation									
PERA	10141	37874	15533	295					
Well. Ref.	16835	62873	25786	491					
PERA	8766	32735	13426	255					
	466236	1732831	717235	13577					

	SCHOOL DISTRICT NO.	LOCAL 1 MILL	SPECIAL	STATE LOAN	Deficiency	C.O.	PERA	TOTALS
MARCH SETTLEMENT	<i>una</i>		4351		17876	3566	1427	27220
	<i>una</i>		53136		109155	21773	8714	192778
	Totals		57487		127031	25339	10141	219998
JUNE SETTLEMENT	<i>una</i>		66682		273962	54646	21872	417162
	<i>una</i>		87574		200443	39981	16002	354000
	Totals		164256		474405	94627	37874	771162
NOVEMBER SETTLEMENT	<i>una</i>		19303		79307	15819	6331	120760
	<i>una</i>		56108		115260	22990	7202	203560
	Totals		75411		194567	38809	15533	324320
NOVEMBER to JANUARY	<i>una</i>		532		2185	436	174	3327
	<i>una</i>		736		1512	302	121	2671
	Totals		1268		3697	738	295	5998
ADDITIONS	School District No.							
	Totals							
REDUCTIONS	School District No.							
	Totals							

Kowalec, Radeo, Beach, Pava, Mobergo, Spriggs, Print, GWA, Under a, Winton, Orkman, Beach, Beach, Secular, Under's M.













Assessment Roll and Tax List of Real Property in the

Town of Habedo

Cass County, Minnesota, for Taxes for the Year 1961.

\* Indicate Type of Property: R-Residential, C-Commercial, I-Industrial, U-Utility, F-Farm, L-Lakeshore, T-Timber, M-Mineral

FORM 300 MILLER-DAVIS CO. MINNEAPOLIS

Table with columns for property description, assessed valuations (Rural, All Other, Machinery, Seasonal and Recreational Cabins, Total Assessed), school district valuations, taxes (State, Special, Total), and payment status (Paid, When Paid, March Settlement, June Settlement, November Settlement, Collections to First Monday in January 1963, Delinquent on First Monday in January 1963, Total Delinquent Tax and Penalty, Remarks).

Pool 1, 2, 3, 4, 5, 6, 7, 8, 9, 10, 11, 12, 13, 14, 15, 16, 17, 18, 19, 20

Vertical text on the right edge of the page, including names like 'Mander's Point Beach' and 'Mander's Point Beach'.



Assessment Roll and Tax List of Real Property in the

*Town of Nobeoka*

\* Indicate Type of Property: R-Residential, C-Commercial, I-Industrial, U-Utility, F-Farm, L-Lakeshore, T-Timber, M-Mineral

FD-113-5CD MILLER-DAVIS CO., MINNEAPOLIS

Table with columns for IN WHOSE NAME ASSESSED, DESCRIPTION OF PROPERTY, TRUE AND FULL VALUATIONS, ASSESSED VALUATIONS, and FINAL EQUALIZED VALUE.

*Leonard E. & Marjorie Carlson, 1/2 int.  
B. C. Hideman, 1/2 int.*

*Glenmar Lodge, Inc.*

*Alexander D. & Gertrude A. Rolfe*

Cass County, Minnesota, for Taxes for the Year 1961.

Table with columns for VALUATIONS BY SCHOOL DISTRICTS AS EQUALIZED BY DEPARTMENT OF TAXATION, Tax including State Homestead, State Tax on Non-Homestead, SPECIAL TAXES, TOTAL TAXES, PAID, WHEN PAID, and REMARKS.

Vertical text on the far right edge of the page, including names and titles like 'Maddo Beach Pass', 'Maddo Springs Point', 'Maddo Board', 'Maddo Addn.', 'Maddo Chairman', 'Maddo Person', 'Maddo's Munkie'.

Assessment Roll and Tax List of Real Property in the Town of Nahdo

Cass County, Minnesota, for Taxes for the Year 1961.

Table with columns: IN WHOSE NAME ASSESSED, DESCRIPTION OF PROPERTY, TRUE AND FULL VALUATIONS, ASSESSED VALUATIONS, VALUATIONS BY SCHOOL DISTRICTS AS EQUALIZED BY DEPARTMENT OF TAXATION, TAX INCLUDING STATE HOMESTEAD, SPECIAL TAXES, TOTAL TAXES, PAID, WHEN PAID, Number of Receipt, March Settlement 1962, June Settlement 1962, November Settlement 1962, Collections to First Monday in January 1963, Delinquent on First Monday in January 1963, Total Delinquent Tax and Penalty, REMARKS.



Assessment Roll and Tax List of Real Property in the town of Habado

\* Indicate Type of Property: R-Residential, C-Commercial, I-Industrial, U-Utility, F-Farm, L-Lakeshore, T-Timber, M-Mineral

IN WHOSE NAME ASSESSED	DESCRIPTION OF PROPERTY				No. School District	Indicate Homestead Yes or No	Agr. or Seas. Rec. Yes or No	Indicate Type of Property	TRUE AND FULL VALUATIONS				ASSESSED VALUATIONS						FINAL EQUALIZED VALUE			
	SUBDIVISION	Sec. or Lot	Town or Block	Pkg.					Number of Acres of Land	LAND Exclusive of Structures and Improvements	BUILDINGS and Other Structures	MACHINERY Permanently Attached to Real Estate	TOTAL True and Full Value	RURAL			ALL OTHER			TOTAL ASSESSED VALUE	Total Assessed Value as Equalized by the Board of Review	
														Acres	100ths	Homestead Up to \$4,000 20%	Over \$4,000 and Non-Homestead 33 1/4%	Timber Land Class 3c 20%				Homestead Up to \$4,000 25%
(The Board of North Central Area Council) National Council of Young Men's Christian Associations	NEW				1014028																	
"	NW 1/4				2																	
"	SW 1/4				3																	
"	SE 1/4				4																	
"					5																	
"	NE 1/4				6																	
"	NW 1/4				7																	
"	SW 1/4				8																	
"	SE 1/4				9																	
"					10																	
"	NE 1/4				11																	
"	NW 1/4				12																	
"	SW 1/4				13																	
"	SE 1/4				14																	
"					15																	
"	NE 1/4				16																	
"	NW 1/4				17																	
"	SW 1/4				18																	
"	SE 1/4				19																	
"					20																	

Cass County, Minnesota, for Taxes for the Year 1961.

SOLD FOR TAXES	VALUATIONS BY SCHOOL DISTRICTS AS EQUALIZED BY DEPARTMENT OF TAXATION						Tax Including State Homestead	State Tax on Non-Homestead	SPECIAL TAXES	SPECIAL TAXES	TOTAL TAXES	PAID	WHEN PAID	Number of Receipt	March Settlement 1962	June Settlement 1962	Penalty	November Settlement 1962	Penalty	Collections to First Monday in January 1963	Penalty	Delinquent on First Monday in January 1963	Total Delinquent Tax and Penalty	REMARKS
	District No.	District No.	District No.	District No.	District No.	District No.																		
	Rate	Rate	Rate	Rate	Rate	Rate																		
1																								
2																								
3																								
4																								
5																								
6																								
7																								
8																								
9																								
10																								
11																								
12																								
13																								
14																								
15																								
16																								
17																								
18																								
19																								
20																								

Kowfeldt Habado Springs Iowa Lander's & McWhirter Chapman Beach Stuart's Beach Lander's Musk













Assessment Roll and Tax List of Real Property in the

Town of *Arbudo*

\* Indicate Type of Property: R-Residential, C-Commercial, I-Industrial, U-Utility, F-Farm, L-Lakeshore, T-Timber, M-Mineral

IN WHOSE NAME ASSESSED	DESCRIPTION OF PROPERTY				No. School District	Indicate Homestead Yes or No	Agricultural Rec. Yes or No	Indicate Type of Property	TRUE AND FULL VALUATIONS				ASSESSED VALUATIONS							FINAL EQUALIZED VALUE		
	SUBDIVISION	Sec. of Lot	Town or Block	No. of Acres of Land					LAND Exclusive of Structures and Improvements	BUILDINGS and Other Structures	MACHINERY Permanently Attached to Real Estate	TOTAL True and Full Value	RURAL			ALL OTHER					TOTAL ASSESSED VALUE	Total Assessed Value as Equalized by the Board of Review
													Homestead Up to \$4,000 20%	Over \$4,000 and Non-Homestead 33 1/3%	Timber Land Class 3e 20%	Homestead Up to \$4,000 25%	Over \$4,000 and Non-Homestead 40%	MACHINERY Permanently Attached to Real Estate 33 1/3%	Seasonal and Recreational Cabins 33 1/3%			
				Acres 100ths				Dollars	Dollars	Dollars	Dollars	Dollars	Dollars	Dollars	Dollars	Dollars	Dollars	Dollars	Dollars			
1	NE 1/4 of NE 1/4	15	140 28																			
2	NW 1/4 of NE 1/4																					
3	GOVT LOT 2 SW 1/4 of NE 1/4			25 72		NO	NO															
4	SE 1/4 of NE 1/4					NO	NO															
5	GOVT LOT 1 LYING E. OF C.A.R. # 28 LESS .3 ACS.			7 25		NO	NO															
	GOVT LOT 1 LYING W. OF C.A.R. # 28					YES	NO															
7	NW 1/4 of NW 1/4																					
8	SW 1/4 of NW 1/4																					
9	SE 1/4 of NW 1/4																					
10	3rd OF GOVT LOT 1 - E. OF C.A.R. # 28			3		NO	YES	R														
11	NE 1/4 of SW 1/4			40		YES	NO	"														
12	NW 1/4 of SW 1/4			40		YES	YES	T														
13	SW 1/4 of SW 1/4			40		YES	"	"														
14	GOVT LOT 4 SW 1/4 of SW 1/4			28 95		NO	"	L														
16	NE 1/4 of SE 1/4																					
17	GOVT LOT 3 NW 1/4 of SE 1/4																					
18	SW 1/4 of SE 1/4																					
19	SE 1/4 of SE 1/4																					
20				128 95																		

John & Elizabeth Gained

The Board of North Central Area Council of the National Council of Young Men's Christian Association

Joseph & Gertrude Shaw

Frank & Lucie M. Risch

The Board of North Central Area Council of the National Council of Young Men's Christian Association

Cass County, Minnesota, for Taxes for the Year 1961.

SOLD FOR TAXES	VALUATIONS BY SCHOOL DISTRICTS AS EQUALIZED BY DEPARTMENT OF TAXATION						Tax Including State Homestead	State Tax on Non-Homestead	SPECIAL TAXES	SPECIAL TAXES	TOTAL TAXES	PAID	WHEN PAID	Number of Receipts	March Settlement 1962	June Settlement 1962	Penalty	November Settlement 1962	Penalty	Collections to First Monday in January 1963	Penalty	Delinquent on First Monday in January 1963	Total Delinquent Tax and Penalty	REMARKS
	District No.	District No.	District No.	District No.	District No.	District No.																		
	Rate	Rate	Rate	Rate	Rate	Rate																		
	Dollars	Dollars	Dollars	Dollars	Dollars	Dollars	\$ cts.	\$ cts.	\$ cts.	\$ cts.	\$ cts.	Month Day Year		\$ cts.	\$ cts.	\$ cts.	\$ cts.	\$ cts.	\$ cts.	\$ cts.	\$ cts.	\$ cts.	\$ cts.	
1																								
2																								
3																								
4																								
5																								
6																								
7																								
8																								
9																								
10																								
11																								
12																								
13																								
14																								
15																								
16																								
17																								
18																								
19																								
20																								

Vertical text on the right edge of the page, including 'Kovalevich', 'Wabado', 'Springs', 'Lander's and Winifred Chapman', 'Lander's Ass'n.', 'Beach', 'Stuart', 'Beach', 'Lander's Ass'n.'.





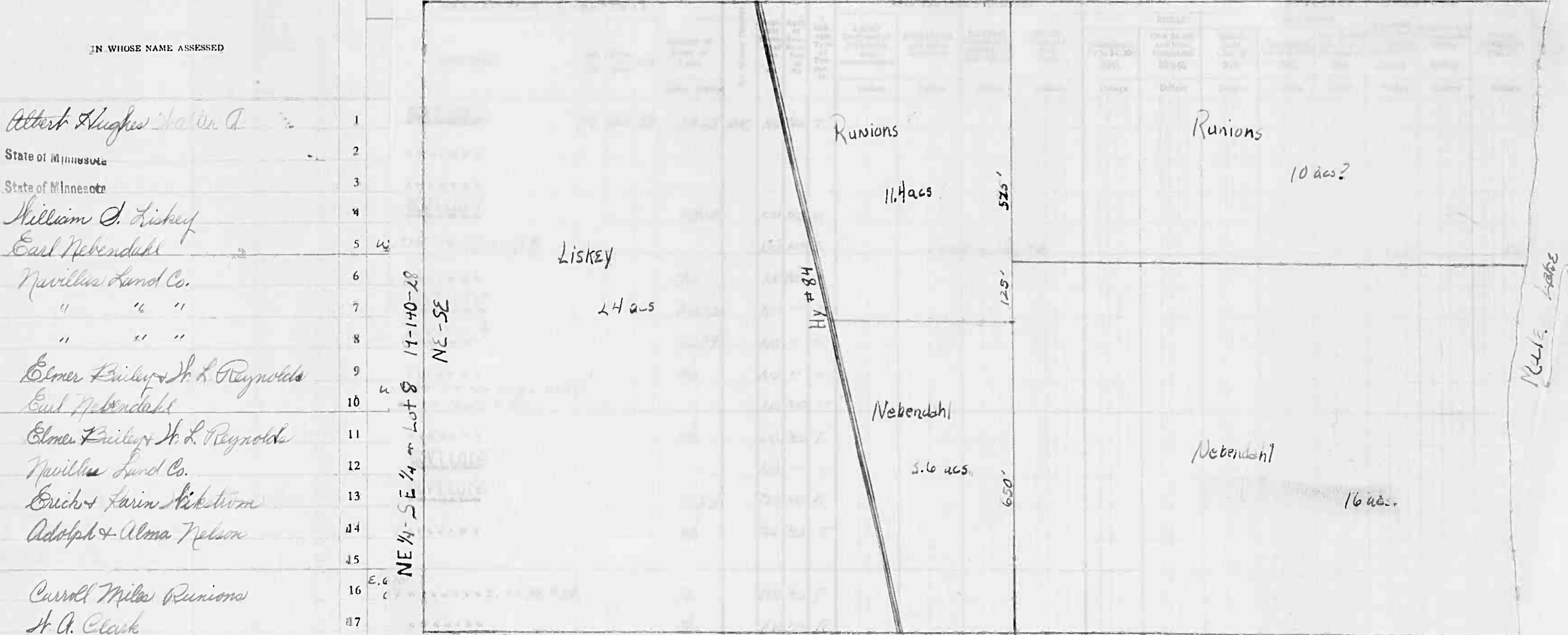




Assessment Roll

lot 8

North S.D. MILLER-DAVIS CO., MINNEAPOLIS



19	Curroll Miles Runions	3250	YES/NO
20	William D. Liskey	2400	NO/YES
E.C. 19 (CONT ON NEXT PAGE)			
		436.29	

Cass County, Minnesota, for Taxes for the Year 1961.

FINAL EQUALIZED VALUE	SOLD FOR TAXES	VALUATIONS BY SCHOOL DISTRICTS AS EQUALIZED BY DEPARTMENT OF TAXATION					Tax Including State Homestead	State Tax on Non-Homestead	SPECIAL TAXES	SPECIAL TAXES	TOTAL TAXES	PAID	WHEN PAID	Number of Receipt	March Settlement 1962	June Settlement 1962	Penalty	November Settlement 1962	Penalty	Collections to First Monday in January 1963	Penalty	Delinquent on First Monday in January 1963	Total Delinquent Tax and Penalty	REMARKS
		District No.	District No.	District No.	District No.	District No.																		
Dollars		Dollars	Dollars	Dollars	Dollars	Dollars	\$ cts.	\$ cts.	\$ cts.	\$ cts.		Month Day Year		\$ cts.	\$ cts.	\$ cts.	\$ cts.	\$ cts.	\$ cts.	\$ cts.	\$ cts.	\$ cts.		
132		132					3752	120		3872	1	PAID IN FULL MAY 3 1962	12867		3872								12520	
188		188					5344	172		5516	4	PAID IN FULL MAY 9 1962	7116		5516								12524	
90		90					2558	82		2640	6													
128		128					3638	116		3754	7													
128		128					3638	116		3754	8													
90		90					2558	82		2640	9	penalty Aug 23 1962	14157											
90		90					2558	82		2640	11	PAID IN FULL JUN 2 5 1962												
90		90					2558	82		2640	12	2nd HALF PAID OCT 1 5 1962	17624											
90		90					2558	82		2640	13	1st HALF PAID MAY 31 1962	13681											
90		90					2558	82		2640	14	penalty Aug 23 1962	14157											
90		90					2558	82		2640	15	PAID IN FULL JUN 2 5 1962	14157											
90		90					2558	82		2640	16	2nd HALF PAID OCT 3 1 1962	18455											
90		90					2558	82		2640	17	1st HALF PAID JUN 2 1 1962	14020											
120		120					3652	110		3762	18	PAID IN FULL MAY 9 1962	7105											
180		180					8762	164		8926	19	2nd HALF PAID OCT 3 1 1962	18455											
180		180					8762	164		8926	20	1st HALF PAID JUN 2 1 1962	14020											
136		136					3696	118		3814	20	PAID IN FULL MAY 9 1962	7116											
136		136					3696	118		3814	20													
136		136					3696	118		3814	20													
136		136					3696	118		3814	20													
136		136					3696	118		3814	20													
136		136					3696	118		3814	20													
136		136					3696	118		3814	20													
136		136					3696	118		3814	20													
136		136					3696	118		3814	20													
136		136					3696	118		3814	20													
136		136					3696	118		3814	20													
136		136					3696	118		3814	20													
136		136					3696	118		3814	20													
136		136					3696	118		3814	20													
136		136					3696	118		3814	20													
136		136					3696	118		3814	20													
136		136					3696	118		3814	20													
136		136					3696	118		3814	20													
136		136					3696	118		3814	20													
136		136					3696	118		3814	20													
136		136					3696	118		3814	20													
136		136					3696	118		3814	20													
136		136					3696	118		3814	20													
136		136					3696	118		3814	20													
136		136					3696	118		3814	20													
136		136					3696	118		3814	20													
136		136					3696	118		3814	20													
136		136					3696	118		3814	20													
136		136					3696	118		3814	20													
136		136					3696	118		3814	20													
136		136					3696	118		3814	20													
136		136					3696	118		3814	20													
136		136					3696	118		3814	20													
136		136					3696	118		3814	20													
136		136					3696	118		3814	20													
136		136					3696	118		3814	20													
136		136					3696	118		3814	20													
136		136					3696	118		3814	20													
136		136					3696	118		3814	20													
136		136					3696	118		3814	20													
136		136					3696	118		3814	20													
136		136					3696	118		3814	20													
136		136					3696	118		3814	20													
136		136					3696	118		3814	20													
136		136					3696	118		3814	20													
136		136					3696	118		3814	20													
136		136					3696	118		3814	20													
136		136					3696	118		3814	20													
136		136					3696	118		3814	20													
136		136					3696	118		3814	20													
136		136					3696	118		3814	20													
136		136					3696	118		3814	20													
136		136					3696	118		3814	20													
136		136					3696	118		3814	20													
136		136					3696	118		3814	20													
136		136					3696	118		3														







Assessment Roll and Tax List of Real Property in the Town of Naleda

Cass County, Minnesota, for Taxes for the Year 1961.

\* Indicate Type of Property: R-Residential, C-Commercial, I-Industrial, U-Utility, F-Farm, L-Lakeshore, T-Timber, M-Mineral

Table with columns: IN WHOSE NAME ASSESSED, DESCRIPTION OF PROPERTY, TRU AND FULL VALUATIONS, ASSESSED VALUATIONS, TOTAL ASSESSED VALUE, and FINAL EQUALIZED VALUE.

Table with columns: VALUATIONS BY SCHOOL DISTRICTS AS EQUALIZED BY DEPARTMENT OF TAXATION, Tax including State Homestead, SPECIAL TAXES, TOTAL TAXES, PAID, WHEN PAID, Number of Receipt, March Settlement 1962, June Settlement 1962, November Settlement 1962, Collections to First Monday in January 1963, Delinquent on First Monday in January 1963, Total Delinquent Tax and Penalty, and REMARKS.

Vertical text on the right edge of the page, including names like 'Wanda's Beach' and 'Stuart's Beach'.

Assessment Roll and Tax List of Real Property in the Town of *Uabedo*

\* Indicate Type of Property: R-Residential, C-Commercial, I-Industrial, U-Utility, F-Farm, L-Lakeshore, T-Timber, M-Mineral

Table with 18 columns: IN WHOSE NAME ASSESSED, SUBDIVISION, No. School District, etc. Includes property owners like Edward E. & Olga M. Eppley and descriptions like GOVT LOT 2, GOVT LOT 3, etc.

(CONT ON NEXT PAGE)

29690

Cass County, Minnesota, for Taxes for the Year 1961.

Table with 25 columns: SOLD FOR TAXES, VALUATIONS BY SCHOOL DISTRICTS AS EQUALIZED BY DEPARTMENT OF TAXATION, Tax Including State Homestead, State Tax on Non-Homestead, SPECIAL TAXES, TOTAL TAXES, PAID, WHEN PAID, etc.

1037

40  
\$ 561 = 436  
29478  
32100  
70.23 = 2092  
10.55

63154

15850

10.94

Vertical text on the right edge of the page, including names like 'Korteldt Mabeo' and 'Mabeo Springs'.

Assessment Roll and Tax List of Real Property in the

Town of *Wabedo*

\* Indicate Type of Property: R-Residential, C-Commercial, I-Industrial, U-Utility, F-Farm, L-Lakeshore, T-Timber, M-Mineral

Form 5012 MILLER-DAVIS CO., MINNEAPOLIS

Table with columns: IN WHOSE NAME ASSESSED, DESCRIPTION OF PROPERTY, TRUE AND FULL VALUATIONS, ASSESSED VALUATIONS, and FINAL EQUALIZED VALUE. Includes handwritten entries for Frances Christian and James Kenneth Jensen.

Cass County, Minnesota, for Taxes for the Year 1961.

Table with columns: SOLID FOR TAXES, VALUATIONS BY SCHOOL DISTRICTS AS EQUALIZED BY DEPARTMENT OF TAXATION, Tax including State Homestead, State Tax on Non-Homestead, SPECIAL TAXES, TOTAL TAXES, PAID, WHEN PAID, Number of Receipt, March Settlement 1962, June Settlement 1962, November Settlement 1962, Penalty, Collections to First Monday in January 1963, Delinquent on First Monday in January 1963, Total Delinquent Tax and Penalty, REMARKS. Includes handwritten entries and calculations.

Vertical text on the far right edge of the page, including 'Wabedo Beach Pass' and 'Stuart's Beach'.



Assessment Roll and Tax List of Real Property in the Town of Wabedo

\* Indicate Type of Property: R-Residential, C-Commercial, I-Industrial, U-Utility, F-Farm, L-Lakeshore, T-Timber, M-Mineral

Table with columns: IN WHOSE NAME ASSESSED, DESCRIPTION OF PROPERTY, TRUE AND FULL VALUATIONS, ASSESSED VALUATIONS, FINAL EQUALIZED VALUE. Includes handwritten entries for Frank E. & Helen R. Burgin, Thomas J. & Mae Rose McKeever, etc.

(SEC. 22 - CONT NEXT PAGE)

Cass County, Minnesota, for Taxes for the Year 1961.

Table with columns: SOLD FOR TAXES, VALUATIONS BY SCHOOL DISTRICTS, TAXES, PAID, WHEN PAID, Number of Receipt, March Settlement, June Settlement, November Settlement, Collections to First Monday in January 1961, Delinquent on First Monday in January 1961, Total Delinquent Tax and Penalty, REMARKS. Includes handwritten entries for Frank E. & Helen R. Burgin, etc.

Vertical text on the right edge of the page, including names like 'Wabedo Springs', 'Wabedo Beach', 'Wabedo Port', 'Wabedo Landing', 'Wabedo and Winnie Chapman Beach', 'Stewart's Beach', 'Wabedo and Muskies Beach'.

Assessment Roll and Tax List of Real Property in the town of Wabedo

\* Indicate Type of Property: R-Residential, C-Commercial, I-Industrial, U-Utility, F-Farm, L-Lakeshore, T-Timber, M-Mineral

Form SCD MILLER-GAVRECO, MINNEAPOLIS

IN WHOSE NAME ASSESSED	DESCRIPTION OF PROPERTY				No. School District	Indicate Homestead Yes or No	Agricultural or Recreational Yes or No	Indicate Type of Property	TRUE AND FULL VALUATIONS		ASSESSED VALUATIONS							FINAL EQUALIZED VALUE
	SUBDIVISION	Sec. or Lot	Town or Block	Number of Acres of Land Acres 100ths					LAND EXCLUSIVE OF STRUCTURES AND IMPROVEMENTS Dollars	BUILDINGS AND OTHER STRUCTURES Dollars	MACHINERY Permanently Attached to Real Estate Dollars	TOTAL True and Full Value Dollars	RURAL		ALL OTHER			
									Homestead Up to \$4,000 20%	Over \$4,000 and Non-Homestead 33 1/3%	Timber Land Class 3e 20%	Homestead Up to \$4,000 25%	Over \$4,000 and Non-Homestead 40%	MACHINERY Permanently Attached to Real Estate 33 1/3%	Seasonal and Recreational Cabins 33 1/3%			
	NEW 4 IN 4	22	140 28	800														
	N W W of N W W																	
	S W W of N W W																	
	S E W of N E W																	
	N E W of N W W																	
	N W W of N W W																	
	S W W of N W W																	
	S E W of N W W																	
11	GOVT LOT 6 "N. OF CO. + TWP. ROADS E/4 PART OF GOVT LOT 6"		1650			NO	YES	R										
12	5. OF CO. + TWP. ROADS		7			YES	NO	C										
13	PART OF GOVT LOT 6 "S. OF CO. RD.					NO		R										
14	PART OF GOVT LOT 6 "S. OF CO. RD.					NO	YES	"										
15	E. 100' OF GOVT LOT 6 "S. OF CO. RD.					YES	NO	L										
16	W/4 PART OF GOVT LOT 6 "S. OF CO. RD.					YES		R										
17	W. 100' OF GOVT LOT 6 "S. OF CO. RD.					NO	YES	"										
18	S W W of S E W																	
19	S E W of S E W																	
20																		

Cass County, Minnesota, for Taxes for the Year 1961.

SOLD FOR TAXES	VALUATIONS BY SCHOOL DISTRICTS AN EQUALIZED BY DEPARTMENT OF TAXATION				Tax Including State Homestead Mills	State Tax on Non-Homestead 9.2 Mills	SPECIAL TAXES	SPECIAL TAXES	TOTAL TAXES	PAID	WHEN PAID Month Day Year	Number of Receipt	March Settlement 1962	June Settlement 1962	Penalty	November Settlement 1962	Penalty	Collections to First Monday in January 1963	Penalty	Delinquent on First Monday in January 1963	Total Delinquent Tax and Penalty	REMARKS	
	District No.	Rate Mills	District No.	Rate Mills																			District No.
1																							
2																							
3																							
4																							
5																							
6																							
7																							
8																							
9																							
10																							
11									6254	200			6454	1st Half Paid MAY 20 1962 9331		3227						22073	12535
12									12322	318			12540	2nd HALF PAID OCT 19 1962 7678		6270							11513
13									5476	164			5640	1st HALF PAID MAY 29 1962 13608		6601							11510
14									12792	410			13202	2nd HALF PAID MAY 31 1962 9382		6601							12537
15									608				608	1st HALF PAID MAY 31 1962 16025		6601							11511
16									7120				7120	2nd HALF PAID MAY 24 1962 16025		7120							11512
17									4548	146			4694	PAID IN FULL MAY 10 1962 7172		4694							12534
18																							
19																							
20									23594				25226	PAID IN FULL MAY 16 1962 8036		7120							12534
									49120				50258	PAID IN FULL MAY 10 1962 7172		4694							

Sigfred & Helen Anderson  
 Harold La Verne & Hazel Esther Keeper  
 " " " " " "  
 Clarence E. & Hulda E. Mount  
 Curtis & Joan Keeper  
 Louna E. & Guy L. Nestling  
 Loel H. & Luovonne G. Fredericksen

Rowald Wabedo  
 Beach Pass  
 Wabedo Springs  
 Port  
 Iowa  
 Mander's  
 and Wm  
 Mander's  
 Winnie Chapman  
 Beach  
 Stuart's  
 Beach  
 Mander's  
 Muskie B

Assessment Roll and Tax List of Real Property in the Town of Watbedo

\* Indicate Type of Property: R-Residential, C-Commercial, I-Industrial, U-Utility, F-Farm, L-Lakeshore, T-Timber, M-Mineral

Table with columns: IN WHOSE NAME ASSESSED, DESCRIPTION OF PROPERTY, TRUE AND FULL VALUATIONS, ASSESSED VALUATIONS, FINAL EQUALIZED VALUE. Includes entries for State of Minnesota, N.L. + Lucille H. Hilde, Clarence + Rosa Booth, Thomas J. + Mae Rose McKeever, Hillette + Bernice E. Muile.

(SEC. 23 - CONT NEXT PAGE)

Cass County, Minnesota, for Taxes for the Year 1961.

Table with columns: VALUATIONS BY SCHOOL DISTRICTS AS EQUALIZED BY DEPARTMENT OF TAXATION, Tax including State Homestead, State Tax on Non-Homestead, SPECIAL TAXES, TOTAL TAXES, PAID, WHEN PAID, Number of Receipt, March Settlement 1962, June Settlement 1962, November Settlement 1962, Collections to First Monday in January 1963, Delinquent on First Monday in January 1963, Total Delinquent Tax and Penalty, REMARKS. Includes handwritten entries for tax payments and dates.

Vertical text on the right edge of the page, including 'Watbedo' and other names.

Assessment Roll and Tax List of Real Property in the *Town of Wabedo*

\* Indicate Type of Property: R-Residential, C-Commercial, I-Industrial, U-Utility, F-Farm, L-Lakeshore, T-Timber, M-Mineral

Table with columns: IN WHOSE NAME ASSESSED, DESCRIPTION OF PROPERTY, TRU: AND FULL VALUATIONS, ASSESSED VALUATIONS, FINAL EQUALIZED VALUE. Includes handwritten names like August Gordon and Leticia G. Fitzsimmons.

Cass County, Minnesota, for Taxes for the Year 1961.

Table with columns: VALUATIONS BY SCHOOL DISTRICTS AS EQUALIZED BY DEPARTMENT OF TAXATION, Tax including State Homestead, State Tax on Non-Homestead, SPECIAL TAXES, TOTAL TAXES, PAID, WHEN PAID, Number of Receipt, March Settlement 1962, June Settlement 1962, November Settlement 1962, Collections to First Monday in January 1963, Delinquent on First Monday in January 1963, Total Delinquent Tax and Penalty, REMARKS.





Assessment Roll and Tax List of Real Property in the Town of *Nabedo*

\* Indicate Type of Property: R-Residential, C-Commercial, I-Industrial, U-Utility, F-Farm, L-Lakeshore, T-Timber, M-Mineral

Table with columns for IN WHOSE NAME ASSESSED, DESCRIPTION OF PROPERTY, TRUE AND FULL VALUATIONS, ASSESSED VALUATIONS, and FINAL EQUALIZED VALUE. Includes entries for James C. Marsh, Lee E. Groves, and others.

Cass County, Minnesota, for Taxes for the Year 1961.

Table with columns for VALUATIONS BY SCHOOL DISTRICTS AS EQUALIZED BY DEPARTMENT OF TAXATION, TAXES, PAID, WHEN PAID, Number of Receipt, March Settlement 1962, June Settlement 1962, November Settlement 1962, Collections to First Monday in January 1963, Delinquent on First Monday in January 1963, Total Delinquent Tax and Penalty, and REMARKS. Includes entries for 'SOLD FOR TAXES' and various payment dates.

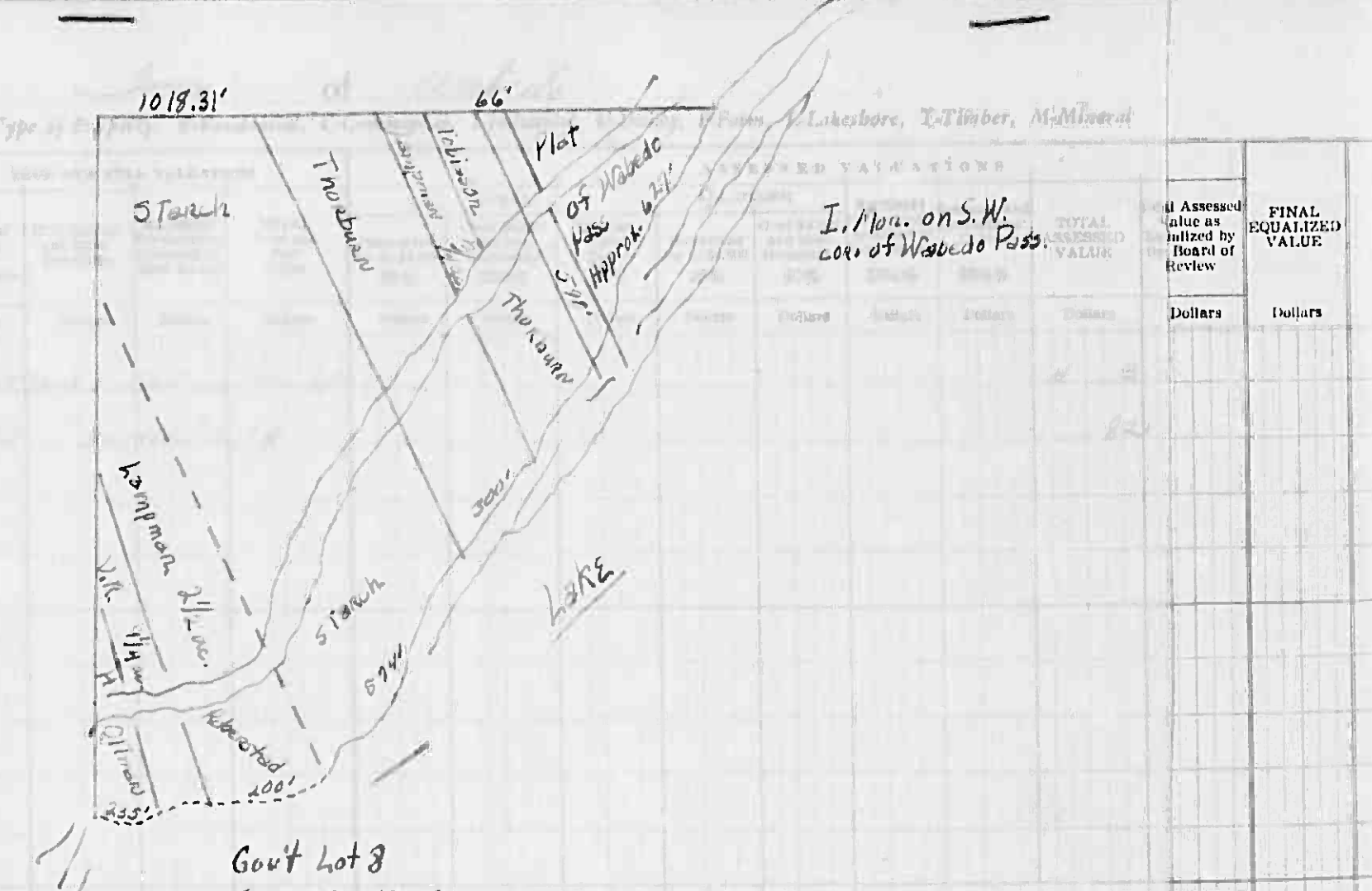




Assessment Roll and Tax List of Real Property in the

\* 1/1

IN WHOSE NAME ASSESSED	DESCRIPTION OF PROPERTY				No. School District	Indicate Home-estead Yes or No	Agricultural Yes or No	Indicate Type of Property	Assessed Value as Indicated by Board of Review	FINAL EQUALIZED VALUE
	Subdivision	Sec. of Lot	Town or Block	Range						
Helen Robberstad	1	50' 07 GOVT LOT 8	27 140 28	2	UN	YES	NO	T		
William C. + Joseph H. Crane	2	150' 07 GOVT LOT 8			NO	"	"	L		
Verlautey + Robberstad	3	All that part of Lot 8 lying SW of a line which is parallel to and 1340' distant from SW line of Lot 1, Plat of Wabedo Pass		950	YES	NO	R			
Helen + Laura E. Robberstad	6	PART OF GOVT LOT 8			YES	NO	R			
Adolph E. + Effie L. Starck	7	PART OF GOVT LOT 8	2917		NO	NO	L			
A. G. + Esther N. Verlautey	8	PART OF GOVT LOT 8			YES	NO	R			
Lloyd M. + Rose Thorburn	9	PART OF GOVT LOT 8 (cont'd #1 276854)			NO	YES	L			
William C. + Louise Lampman	10	Strip 100' wide of Lot 8 lying between road and N. line of Lot 8 & being parallel to & 166' from extended SW line of Lot 1, Plat of Wabedo Pass & strip 200' wide of Lot 8 between road and W. line of Lot 8 and lying adjacent to and SW of an extended line parallel to and 1140' distant from SW line of Lot 1 - Plat of Wabedo Pass		250	NO	NO	T			
Harm Ottman	15	The W. 235' of Gov't Lot 8, 27-140-28 extending from Wabedo Lake on the S. and running N. approx. 400' to the pot hole, cont. 2 acs. more or less			NO	YES	L			
Lloyd M. + Rose Thorburn	20	Strip 200' wide of Lot 8 lying between lake & road, and being parallel to and 66' from SW line of Lot 1 - Plat of Wabedo Pass and Strip 100' wide of Lot 8 lying between road & N. line of Lot 8 and being parallel to and 66' from extended SW line of Lot 1 - Plat of Wabedo Pass.		47 17	NO	YES	L			



Cass County, Minnesota, for Taxes for the Year 1961.

SOLD FOR TAXES	VALUATIONS BY SCHOOL DISTRICTS AS EQUALIZED BY DEPARTMENT OF TAXATION						Tax including State Homestead	State Tax on Non-Homestead	SPECIAL TAXES	SPECIAL TAXES	TOTAL TAXES	PAID	WHEN PAID	Number of Receipt	March Settlement 1962	June Settlement 1962	Penalty	November Settlement 1962	Penalty	Collections to First Monday in January 1963	Penalty	Delinquent on First Monday in January 1963	Total Delinquent Tax and Penalty	REMARKS	
	District No.	District No.	District No.	District No.	District No.	District No.																			
1				H 3			72				92	1 PAID IN FULL APR 23 1962	7992		928										
2				82			2496	14			2570	2 PAID IN FULL MAY 3 1 1962	9363		2570									11444	
3												3												11527	
4				H 12			366				366	4 PAID IN FULL MAY 1 0 1962	7140		366									11526	
5												5												11526	
6				H 176			5356				5356	6 PAID IN FULL APR 23 1962	7992		5356									11524	
7				110			3346	100			3446	7 PAID IN FULL MAY 2 8 1962	11326		3446									11527	
8				H 144			4382				4382	8 PAID IN FULL MAY 1 0 1962	7140		4382									12551	
9							1138	36			1174	9 PAID IN FULL SEP 4 1962	16772					7 74	35						
10				40								10													
11												11													
12												12													
13	SOLD FOR TAXES			25			760	22			782	13 PAID IN FULL MAY 2 5 1962	13455		782									19139	
14												14													
15												15													
16				370			10518	338			10856	16 PAID IN FULL MAY 2 9 1962	9336		10856									12552	
17												17													
18												18													
19												19													
20				377			10716	344			11060	20 PAID IN FULL SEP 4 1962	16772		278 50				110 60	332				12551	
				787			22372	914			7084														
							16798																		
							39170																		

Korfeldt, Bebeo, Spriggs, Print, Addn, Mander's and Winnie Chairman, Beach, Stuart's Beach, Mander's Muskie Bay





Assessment Roll and Tax List of Real Property in the Town of *Sawm* of *Hubedo*

\* Indicate Type of Property: R-Residential, C-Commercial, I-Industrial, U-Utility, F-Farm, L-Lakeshore, T-Timber, M-Mineral

Table with columns: IN WHOSE NAME ASSESSED, DESCRIPTION OF PROPERTY, TRUE AND FULL VALUATIONS, ASSESSED VALUATIONS, and FINAL EQUALIZED VALUE. Rows include property entries for the State of Minnesota and individuals like Raymond & Margaret Kazaretti and Pat Henry.

Cass County, Minnesota, for Taxes for the Year 1961.

Table with columns: SOLD FOR TAXES, VALUATIONS BY SCHOOL DISTRICTS AS EQUALIZED BY DEPARTMENT OF TAXATION, Tax Including State Homestead, State Tax on Non-Homestead, SPECIAL TAXES, TOTAL TAXES, PAID, WHEN PAID, Number of Receipts, March Settlement 1962, June Settlement 1962, November Settlement 1962, Penalty, Collections to First Monday in January 1963, Delinquent on First Monday in January 1963, Total Delinquent Tax and Penalty, and REMARKS. Includes handwritten entries for taxes paid in full.

Assessment Roll and Tax List of Real Property in the

Source of Wabedo
\* Indicate Type of Property: R-Residential, C-Commercial, I-Industrial, U-Utility, F-Farm, L-Lakeshore, T-Timber, M-Mineral

Form 502 - MILLER-DAVIS CO. MINNEAPOLIS

Table with columns for Description of Property, True and Full Valuations, Assessed Valuations (Rural, All Other, Machinery, Seasonal and Recreational Cabins), Total Assessed Value, and Final Equalized Value.

State of Minnesota

Cass County, Minnesota, for Taxes for the Year 1961.

Table with columns for Sold for Taxes, Valuations by School Districts, Special Taxes, Total Taxes, Paid, When Paid, March Settlement, June Settlement, November Settlement, Penalty, Collections to First Monday in January 1963, Delinquent on First Monday in January 1963, Total Delinquent Tax and Penalty, and Remarks.

Vertical text on the right edge of the page, including names and addresses like 'Kortzfeldt Wabedo Beach' and 'Stuart's Beach'.

Assessment Roll and Tax List of Real Property in the Town of Wabedo

\* Indicate Type of Property: R-Residential, C-Commercial, I-Industrial, U-Utility, F-Farm, L-Lakeshore, T-Timber, M-Mineral

Table with columns: IN WHOSE NAME ASSESSED, DESCRIPTION OF PROPERTY, TRUE AND FULL VALUATIONS, ASSESSED VALUATIONS (RURAL, ALL OTHER, MACHINERY, Seasonal and Recreational Cabins), TOTAL ASSESSED VALUE, Total Assessed Value as Equalized by the Board of Review, FINAL EQUALIZED VALUE.

Cass County, Minnesota, for Taxes for the Year 1961.

Table with columns: VALUATIONS BY SCHOOL DISTRICTS AS EQUALIZED BY DEPARTMENT OF TAXATION, Tax Including State Homestead, State Tax on Non-Homestead, SPECIAL TAXES, TOTAL TAXES, PAID, WHEN PAID, Number of Receipt, March Settlement 1962, June Settlement 1962, Penalty, November Settlement 1962, Collections to First Monday in January 1961, Delinquent on First Monday in January 1961, Total Delinquent Tax and Penalty, REMARKS.

Vertical text on the right edge of the page, including names and locations: Howard's Beach, Wabedo Springs, Iowa's Point, Mander's and Winnie Beach, Stuart's Beach, Mander's Muskie Bay.

Assessment Roll and Tax List of Real Property in the Town of Valedo

\* Indicate Type of Property: R-Residential, C-Commercial, I-Industrial, U-Utility, F-Farm, L-Lakeshore, T-Timber, M-Mineral

Table with columns for IN WHOSE NAME ASSESSED, DESCRIPTION OF PROPERTY, TRUE AND FULL VALUATIONS (LAND, BUILDINGS, MACHINERY, TOTAL), ASSESSED VALUATIONS (RURAL, ALL OTHER, MACHINERY, Seasonal and Recreational Cabins, TOTAL ASSESSED VALUE), and FINAL EQUALIZED VALUE.

Cass County, Minnesota, for Taxes for the Year 1961.

Table with columns for VALUATIONS BY SCHOOL DISTRICTS AS EQUALIZED BY DEPARTMENT OF TAXATION, TAX including State Homestead, State Tax on Non-Homestead, SPECIAL TAXES, TOTAL TAXES, PAID, WHEN PAID, Number of Receipt, March Settlement 1962, June Settlement 1962, November Settlement 1962, Penalty, Collections to First Monday in January 1963, Delinquent on First Monday in January 1963, Total Delinquent Tax and Penalty, and REMARKS.

Assessment Roll and Tax List of Real Property in the Town of Wabedo

\* Indicate Type of Property: R-Residential, C-Commercial, I-Industrial, U-Utility, F-Farm, L-Lakeshore, T-Timber, M-Mineral

FORM 300 MILLER-DAVIS CO., MINNEAPOLIS

Table with columns: DESCRIPTION OF PROPERTY, TRUE AND FULL VALUATIONS, ASSESSED VALUATIONS, and FINAL EQUALIZED VALUE. Includes rows for various lots and owners like Harry, Minnie & Jane E. Engelhart.

Cass County, Minnesota, for Taxes for the Year 1961.

Table with columns: VALUATIONS BY SCHOOL DISTRICTS AS EQUALIZED BY DEPARTMENT OF TAXATION, TAXES, PAID, WHEN PAID, and REMARKS. Includes rows for school districts and tax amounts.

Vertical text on the right edge: Kaufdt Wabedo Beach Pass, Wabedo Springs Point, Iowa's Mander's Mc Winnie Chapman Beach, Stuart's Beach, Mander's Muske B.



Assessment Roll and Tax List of Real Property in the Town of Wabedo of Wabedo County, Minnesota

\* Indicate Type of Property: R-Residential, C-Commercial, I-Industrial, U-Utility, F-Farm, L-Lakeshore, T-Timber, M-Mineral

Table with columns: IN WHOSE NAME ASSESSED, DESCRIPTION OF PROPERTY, TRUE AND FULL VALUATIONS, ASSESSED VALUATIONS, and FINAL EQUALIZED VALUE. Includes handwritten entries for 'Govt Lot 1-4' and 'Ralph F. & Lois J. Felton'.

Cass County, Minnesota, for Taxes for the Year 1961.

Table with columns: VALUATIONS BY SCHOOL DISTRICTS AS EQUALIZED BY DEPARTMENT OF TAXATION, Tax including State Homestead, SPECIAL TAXES, TOTAL TAXES, PAID, WHEN PAID, Number of Receipt, March Settlement, June Settlement, November Settlement, Collections to First Monday in January 1963, Delinquent on First Monday in January 1961, Total Delinquent Tax and Penalty, REMARKS. Includes handwritten tax amounts and payment dates.

Vertical text on the right edge of the page, including 'Howe's Beach', 'Habeas Corpus', 'Print', 'Mander's 2nd Wm. Chapman Beach', 'Stuart's Beach', and 'Mander's Muskie Beach'.



Assessment Roll and Tax List of Real Property in the Town of Sabdo, County of Cass, Minnesota  
\* Indicate Type of Property: R-Residential, C-Commercial, I-Industrial, U-Utility, F-Farm, L-Lakeshore, T-Timber, M-Mineral

IN WHOSE NAME ASSESSED	DESCRIPTION OF PROPERTY				No. School District	Indicate Homestead Yes or No	Agricultural or Non-Agricultural Property	TRUE AND FULL VALUATIONS		ASSESSED VALUATIONS							FINAL EQUALIZED VALUE		
	SUBDIVISION	Sec. or Lot	Town or Block	Number of Acres of Land				LAND Exclusive of Structures and Improvements	BUILDINGS and Other Structures	MACHINERY Permanently Attached to Real Estate	TOTAL True and Full Value	RURAL		ALL OTHER				TOTAL ASSESSED VALUE	Total Assessed Value as Equalized by the Board of Review
												Homestead Up to \$4,000 20%	Over \$4,000 and Non-Homestead 33 1/3%	Timber Land Class 3e 20%	Homestead Up to \$1,000 25%	Over \$4,000 and Non-Homestead 40%			
State of Minnesota				GOVT LOT 1 36.140 28	Un														
State of Minnesota				N W 1/4 of N E 1/4															
State of Minnesota				S W 1/4 of N E 1/4															
State of Minnesota				S E W 1/2 of N E 1/4															
State of Minnesota				N E 1/4 of N W 1/4															
State of Minnesota				N W 1/4 of N W 1/4															
State of Minnesota				S W 1/4 of N W 1/4															
State of Minnesota				S E W 1/2 of N W 1/4															
State of Minnesota				N E 1/4 of S W 1/4															
State of Minnesota				N W 1/4 of S W 1/4															
State of Minnesota				S W 1/4 of S W 1/4															
State of Minnesota				S E 1/4 of S W 1/4															
State of Minnesota				GOVT LOT 2															
State of Minnesota				N W 1/4 of S E 1/4															
State of Minnesota				S W 1/4 of S E 1/4															
State of Minnesota				S E 1/4 of S E 1/4															

Cass County, Minnesota, for Taxes for the Year 1961.

SOLD FOR TAXES	VALUATIONS BY SCHOOL DISTRICTS AS EQUALIZED BY DEPARTMENT OF TAXATION						Tax Including State Homestead	State Tax on Non-Homestead	SPECIAL TAXES	SPECIAL TAXES	TOTAL TAXES	PAID	WHEN PAID	Number of Receipt	March Settlement 1962	June Settlement 1962	Penalty	November Settlement 1962	Penalty	Collections to First Monday in January 1963	Penalty	Delinquent on First Monday in January 1963	Total Delinquent Tax and Penalty	REMARKS
	District No.	District No.	District No.	District No.	District No.	District No.																		
	Rate	Rate	Rate	Rate	Rate	Rate																		

Kowalewski Sabdo Springs Forest Mander's and Winnie Chapman Mander's and Winnie Chapman Stuart's Beach Mander's Muskie Beach



Assessment Roll and Tax List of Real Property in the Town of Shabdo of Shabdo County, Minnesota

\* Indicate Type of Property: R-Residential, C-Commercial, I-Industrial, U-Utility, F-Farm, L-Lakeshore, T-Timber, M-Mineral

Shabdo Pass

IN WHOSE NAME ASSESSED	DESCRIPTION OF PROPERTY				No. School District	Indicate Homestead Yes or No	Agricultural Yes or No	Indicate Type of Property	TRUE AND FULL VALUATIONS				ASSESSED VALUATIONS						FINAL EQUALIZED VALUE		
	SUBDIVISION	Sec. or Lot	Town or Block	No. of Acres of Land					LAND Exclusive of Structures and Improvements	BUILDINGS and Other Structures	MACHINERY Permanently Attached to Real Estate	TOTAL True and Full Value	RURAL		ALL OTHER		MACHINERY Permanently Attached to Real Estate	Seasonal and Recreational Cabins		TOTAL ASSESSED VALUE	Total Assessed Value as Equalized by the Board of Review
													Homestead Up to \$4,000 20%	Over \$4,000 and Non-Homestead 33 1/3%	Timber Land Class 3e 20%	Homestead Up to \$4,000 25%					
G. E. Armstrong	Govt LOTS 4 & B - SEC. 22 & 27 - 140-28	1		1	UN	NO	YES	L													
James G. Armstrong		2		2	NO	"	"	"													
R. J. Andrews		3		3	NO	"	"	"													
Mary Walker & Barbara Hilley		4		4	NO	"	"	"													
" " " "	W. 20' 07"	5		5	NO	"	"	"													
Ellen & Clarence C. Fitzsimmons	LOT 5 LESS W. 20'	5		5	NO	YES	L	L													
Clarence B. & Sophie Cottrell	E. 30' 07"	6		6	NO	"	"	"													
Thos. & Freda Schmidt		7		7	YES	NO	"	"													
Gen. H. & Lilian M. Wilson		8		8	NO	YES	"	"													
" " " "		9		9	NO	"	"	"													

Cass County, Minnesota, for Taxes for the Year 1961.

SOLD FOR TAXES	VALUATIONS BY SCHOOL DISTRICTS AS EQUALIZED BY DEPARTMENT OF TAXATION						Tax Including State Homestead	State Tax on Non-Homestead	SPECIAL TAXES	SPECIAL TAXES	TOTAL TAXES	PAID	WHEN PAID	Number of Receipt	March Settlement 1962	June Settlement 1962	Penalty	November Settlement 1962	Penalty	Collections to First Monday in January 1963	Penalty	Delinquent on First Monday in January 1963	Total Delinquent Tax and Penalty	REMARKS
	District No.	District No.	District No.	District No.	District No.	District No.																		
	Rate	Rate	Rate	Rate	Rate	Rate																		
1							20184	648			20832	1 PAID IN FULL	MAY 3 1 1962											11563
2							568	18			586	2 PAID IN FULL	MAY 3 1 1962	4346		586								"
3							4008	128			4136	3											4136	4550
4							11656	374			12030	4 1st HALF PAID	MAY 3 1 1962	20570		60 15		60 15						11565
5							370	12			382	5 1st HALF PAID	MAY 3 1 1962	12869		1 91		1 91						22062
6							4378	140			4518	6 PAID IN FULL	MAY 2 2 1962	13299		45 18								11568
7							5714	784			5898	7 Balance Paid	MAY 2 8 1962	11329		30 00		28 98						22064
8							3346				3346	8 PAID IN FULL	APR 28 1962	7989										11567
9							1138	36			1174	9 1st HALF PAID	MAY 2 8 1962	11323		76 28		76 28						22063
10							13674	438			14082	10 1st HALF PAID	MAY 2 8 1962	18450										"
11																								
12																								
13																								
14																								
15																								
16																								
17																								
18																								
19																								
20																								

Shabdo Point Add'l. Mander's Beach Stuart's Beach Mander's Muskie

Assessment Roll and Tax List of Real Property in the Town of Wabedo of Wabedo

\* Indicate Type of Property: R-Residential, C-Commercial, I-Industrial, U-Utility, F-Farm, L-Lakeshore, T-Timber, M-Mineral

Form 50 - MILLER-DAVIS CO., MINNEAPOLIS

Wabedo Springs

Wabedo Springs

Table with columns: IN WHOSE NAME ASSESSED, DESCRIPTION OF PROPERTY, TRUE AND FULL VALUATIONS, ASSESSED VALUATIONS, and FINAL EQUALIZED VALUE. Includes property names like Royd A. Blomberg and Joe Z. + Blanche P. Roscoe.

Cass County, Minnesota, for Taxes for the Year 1961.

Table with columns: VALUATIONS BY SCHOOL DISTRICTS AS EQUALIZED BY DEPARTMENT OF TAXATION, Tax including State Homestead, SPECIAL TAXES, TOTAL TAXES, PAID, WHEN PAID, Number of Receipt, March Settlement, June Settlement, November Settlement, Collections to First Monday in January, Delinquent on First Monday in January, Total Delinquent Tax and Penalty, and REMARKS.

Vertical text on the right edge: Kopfeldt's Beach, Austin's Point, Mander's and Winnie's Chairman, Stuart's Beach, Mander's Muskies Beach.

























