

ASSESSMENT & TAX LIST

Wabedo

1953

REAL PROPERTY BECOMING SUBJECT TO TAXATION SINCE THE LAST PREVIOUS ASSESSMENT OR OMITTED FROM ASSESSMENT ROLLS THE PREVIOUS YEARS.
Assessment of Taxable Real Property in the _____ **of** _____ **County of** _____ **, Minn., for the Year 1953.**

NAME OF OWNER	School District	DESCRIPTION OF PROPERTY					Number of Acres of Land	Indicate Homestead or No	Indicate Agricultural or No	BY WHOM VALUED	TRUE AND FULL VALUATIONS				ASSESSED VALUATIONS					FINAL EQUALIZED VALUE						
		SUBDIVISION	Sec. or Lot	Twp. or Block	Rng.	Assessor					LAND Exclusive of Structures and Improvements Dollars	BUILDINGS and Other Structures Dollars	MACHINERY Permanently Attached to Real Estate Dollars	TOTAL True and Full Value Dollars	RURAL		ALL OTHER				MACHINERY Permanently Attached to Real Estate 33 1/3 % Dollars	TOTAL ASSESSED VALUE Dollars	Dollars			
															Homestead Up to \$1,000 20%	Over \$1,000 and Non-Homestead 33 1/4 %	Homestead Up to \$4,000 25%	Over \$4,000 and Non-Homestead 40%	Dollars					Dollars	Dollars	Dollars
															Dollars	Dollars	Dollars	Dollars								
1																										
2																										
3																										
4																										
5																										
6																										
7																										
8																										

Total No. of Acres _____
 Total Value as Equalized by _____
 Total Value as Assessed by _____

SUMMARY OF TAX COLLECTION

Original Levy - - - - - \$ 14,662.84
 Additions - - - - - \$ 98.60
 Abatements - - - - - \$ 14761.44
 \$ 14656.14

COLLECTIONS

March Settlement - - - - - \$ 2356.26
 June Settlement - - - - - \$ 8348.14
 November Settlement - - - - - \$ 2432.36
 January Settlement - - - - - \$ 58.85 \$ 13,195.61
 \$ 1700.53
 Over Collected - - - - - \$ _____
 Under Collected - - - - - \$ _____
 Delinquent - - - - - \$ 1460.53 \$ 1460.53
 Total - - - - - \$ 14656.14

MARBEO PASS
MARBEO SERVO
FOXA POINT
MARBEO S. ADLITION

Assessment of T

TABULAR SCHEDULE OF VALUATIONS, RATES AND TAXES

LEVIED IN THE Town of Wabed County OF Cass, STATE OF MINNESOTA

Main table with columns for School District No., Valuation by School Districts, Rate of County Taxes, Rate of Town Taxes, School Taxes, and Taxes Levied. Includes handwritten entries for school district 'Un' and various tax rates.

Summary table for Assessed Value: Rural Homestead (14030), Non-Homestead (41880), Personal Property (9556), Total (17030).

Taxes Levied summary table: Local 1 Mill (6547), School Special (177527), School State Loan (261864), Tuition (13094), Transportation (98199), Total (557212).

Total Number of Acres 7484.53. State of Minnesota, COUNTY OF CASS. Witness my hand and official seal, this 8th day of December, A. D. 1953. L. C. Peterson, Auditor.

Total Taxes Real Estate 12389.86, Pers. Prop. 2272.98, Total 14662.84.

Assessment of T

COLLECTIONS OF TAXES OF 1953

Town

OF Wabedo

CASS COUNTY, MINNESOTA

FUNDS	MARCH SETTLEMENT 1953	JUNE SETTLEMENT 1953	NOV. SETTLEMENT 1953	Amount Collected from Nov. 1952 to First Monday in Jan. 1953	REDUCTIONS	Total Reductions and Collected	BALANCE UNCOLLECTED	ADDITIONS	Total Uncollected to First Monday in January, 1953
State—Non-Homestead, State—Homestead,	4568 5360	13107 19923	3445 5680	121 143					
County Revenue, County Road and Bridge, County Welfare, County Bond and Interest, <i>R. & Q. Linking</i>	28406 15960 50709 10730 2007	106785 59996 190629 40337 7587	30445 17105 54349 11500 2152	765 430 1366 289 54					
Town Revenue, Town Road and Bridge, Town Drag, Town State Loan, <i>Telephone</i>	5420 15357 1004 833	20876 57732 3773 3132	5809 16460 1076 893	146 414 27 22					
School Local 1 Mill, School Special, School State Loan, Deficiency Tuition Transportation <i>C.O.</i>	1004 37114 40750 2008 15056	3774 92622 150934 7547 56600	1075 31926 43032 2152 16137	27 54 1081 54 405					
	235626	834814	243236	5885					

SETTLEMENT	School District No.	LOCAL 1 MILI.	SPECIAL	STATE LOAN	Transport. Deficiency C.O.	TOTALS
MARCH SETTLEMENT	A Un. Na Un.	152 852	3036 34078		304 1704 6872 34078	2277 12777 11841 83491
JUNE SETTLEMENT	Totals A Un. Na Un.	1004 2916 858	37114 58310 34312	2008 5831 1716	40150 116621 34315	15056 43733 12867 95332 227411 84066
NOVEMBER SETTLEMENT	Totals A Un. Na Un.	3774 555 520	92622 11106 20820	7547 1111 1041	150934 22213 20819	56600 8330 7807 311477 43315 51007
NOVEMBER to JANUARY	Totals A Un.	1075 27	31926 581	2152 54	43032 1081	16137 405 94322 2108
ADDITIONS	Totals	27	581	54	1081	405 2108
REDUCTIONS	Totals					

WABEDO PASS
 WABEDO SETTLEMENT
 TOWN POINT
 MAIDEN'S ADDITION

Assessment Roll and Tax List of Real Property in the Town of Naleda

Cass County, Minnesota, for Taxes for the Year 1953.

Table with columns: IN WHOSE NAME ASSESSED, TO WHOM TRANSFERRED, DESCRIPTION OF PROPERTY, TRUE AND FULL VALUATIONS, ASSESSED VALUATIONS, FINAL EQUALIZED VALUE, SOLD FOR TAXES, VALUATIONS BY SCHOOL DISTRICTS AS EQUALIZED BY DEPARTMENT OF TAXATION, Tax including State Homestead, State Tax on Non-Homestead, SPECIAL TAXES, TOTAL TAXES, PAID, WHEN PAID, Number of Receipt, March Settlement 1954, June Settlement 1954, November Settlement 1954, Penalty, Collections to First Monday in January 1955, Delinquent on First Monday in January 1955, Total Delinquent Tax and Penalty, REMARKS.

ON WHOSE NAME ASSESSED	TO WHOM TRANSFERRED	DESCRIPTION OF PROPERTY					TRUE AND FULL VALUATIONS				ASSESSED VALUATIONS					FINAL EQUALIZED VALUE		
		SUBDIVISION	Sec or Lot	Town or Block	Rdg.	Number of Acres of Land	LAND Exclusive of Structures and Improvements	BUILDINGS and Other Structures	MACHINERY Permanently Attached to Real Estate	TOTAL True and Full Value	RURAL		ALL OTHER		MACHINERY Permanently Attached to Real Estate		TOTAL ASSESSED VALUE	Total Assessed Value as Equalized by the Board of Review
											Acres	100ths	Homestead Up to \$4,000 20%	Over \$4,000 and Non- Homestead 33 1/3%				
							Dollars	Dollars	Dollars	Dollars	Dollars	Dollars	Dollars	Dollars	Dollars	Dollars		

SOLD FOR TAXES	RATINGS BY SCHOOL DISTRICTS AS EQUALIZED BY DEPARTMENT OF TAXATION						Tax including State Homestead	State Tax on Non-Homestead	SPECIAL TAXES	TOTAL TAXES	PAID	WHEN PAID	Number of Receipt	March Settlement 1954	June Settlement 1954	Penalty	November Settlement 1954	Penalty	Collections to First Monday in January 1955	Penalty	Delinquent on First Monday in January 1955	Total Delinquent Tax and Penalty	REMARKS
	District No.	District No.	District No.	District No.	District No.	District No.																	
	Rate	Rate	Rate	Rate	Rate	Rate																	

Fred F. & Mary A. Rynda
Sigfred E. & Fern A. Schefler
O. Harold & Agatha E. Swanson
Raymond B. & Elsie A. Beiser

Lambert St. Stauleup
Luis St. Lulu Stuep

Henry H. Rose
" " " "

George B. & Margaret L. Cook
Wilbur L. & Bernice E. Thatcher

Kimfred S. Stearns
James & Helen C. Stuart

201 added by tax. Bd.
67

2nd Half Paid OCT 25 1954
1st Half Paid MAY 24 1954
2nd Half Paid OCT 25 1954

PAID FOR TAXES
PAID IN FULL MAY 19 1954

980/1078

WABEBO PASS

WABEBO SERIALS

TOWA POINT

MANDER'S ADDITION

Assessment Roll and Tax List of Real Property in the *Town* of *Wabeka*

Cass County, Minnesota, for Taxes for the Year 1953.

Form 501

IN WHOSE NAME ASSESSED	TO WHOM TRANSFERRED	DESCRIPTION OF PROPERTY					TRUE AND FULL VALUATIONS					ASSESSED VALUATIONS					FINAL EQUALIZED VALUE	SOLD FOR TAXES	VALUATIONS BY SCHOOL DISTRICTS AS EQUALIZED BY DEPARTMENT OF TAXATION						SPECIAL TAXES	TOTAL TAXES	PAID	WHEN PAID	Number of Receipt	March Settlement 1954	June Settlement 1954	Penalty	November Settlement 1954	Penalty	Collections to First Monday in January 1955	Penalty	Delinquent on First Monday in January 1955	Total Delinquent Tax and Penalty	REMARKS												
		Subdivision	Sec. or Lot	Town or Block	Rng.	Number of Acres of Land	LAND Exclusive of Structures and Improvements	BUILDINGS and Other Structures	MACHINERY Permanently Attached to Real Estate	TOTAL True and Full Value	RURAL Homestead Up to \$4,000 20%	Over \$4,000 and Non-Homestead 33 1/3%	ALL OTHER Homestead Up to \$4,000 25%	Over \$4,000 and Non-Homestead 40%	MACHINERY Permanently Attached to Real Estate 33 1/3%	TOTAL ASSESSED VALUE			Total Assessed Value as Equalized by the Board of Review	District No.	Rate	District No.	Rate	District No.																Rate	District No.	Rate	Tax including State Homestead	State Tax on Non-Homestead	PAID	WHEN PAID	March Settlement 1954	June Settlement 1954	Penalty	November Settlement 1954	Penalty
<i>S.M. & Marie Robinson</i>																																																			
		<i>NE 1/4 of NE 1/4</i>			<i>9 1/4 28</i>	<i>1/4</i>																																													
		<i>NW 1/4 of NE 1/4</i>			<i>40</i>																																														
		<i>SW 1/4 of NE 1/4</i>			<i>40</i>																																														
		<i>SE 1/4 of NE 1/4</i>			<i>40</i>																																														
		<i>NE 1/4 of NW 1/4</i>			<i>40</i>																																														
		<i>NW 1/4 of NW 1/4</i>			<i>40</i>																																														
		<i>SW 1/4 of NW 1/4</i>			<i>40</i>																																														
		<i>SE 1/4 of NW 1/4</i>			<i>40</i>																																														
		<i>NE 1/4 of SW 1/4</i>			<i>40</i>																																														
		<i>NW 1/4 of SW 1/4</i>			<i>40</i>																																														
		<i>SW 1/4 of SW 1/4</i>			<i>40</i>																																														
		<i>SE 1/4 of SW 1/4</i>			<i>40</i>																																														
		<i>NE 1/4 of SE 1/4</i>			<i>40</i>																																														
		<i>NW 1/4 of SE 1/4</i>			<i>40</i>																																														
		<i>SW 1/4 of SE 1/4</i>			<i>40</i>																																														
		<i>SE 1/4 of SE 1/4</i>			<i>40</i>																																														
					<i>6 40</i>																																														

H 201
97 22
311 38
776
405 60
483 36
413 36

MAIBEO PASS
 MAIBEO SPRINGS
 TOMA POINT
 MAIBER 18 ADDITION

Assessment Roll and Tax List of Real Property in the Town of Wabedo

Cass County, Minnesota, for Taxes for the Year 1953.

Form 501

Table with columns for IN WHOSE NAME ASSESSED, TO WHOM TRANSFERRED, DESCRIPTION OF PROPERTY, TRUE AND FULL VALUATIONS, ABSESSED VALUATIONS, VALUATIONS BY SCHOOL DISTRICTS AS EQUALIZED BY DEPARTMENT OF TAXATION, TAXES, SPECIAL TAXES, TOTAL TAXES, PAID, WHEN PAID, and REMARKS. Includes handwritten entries for 'North Central Area Council of Young Men's Christian Association' and 'Lot 1', 'Lot 2'.

Form 501

IN WHOSE NAME ASSESSED,	TO WHOM TRANSFERRED	DESCRIPTION OF PROPERTY	TRUE AND FULL VALUATIONS											SOLD FOR TAXES	QUOTATIONS BY SCHOOL DISTRICTS AS EQUALIZED BY DEPARTMENT OF TAXATION						PAID	WHEN PAID	Number of Receipt	March Settlement 1954	June Settlement 1954	November Settlement 1954	Collections to First Monday in January 1955	Delinquent on First Monday in January 1955	Total Delinquent Tax and Penalty	REMARKS												
			LAND Exclusive of Structures and Improvements	BUILDINGS and Other Structures	MACHINERY Permanently Attached to Real Estate	TOTAL True and Full Value	RURAL		ALL OTHER		MACHINERY Permanently Attached to Real Estate	TOTAL ASSESSED VALUE	Total Assessed Value as Equalized by the Board of Review		FINAL EQUALIZED VALUE	District No.	District Rate	District No.	District Rate	District No.											District Rate	Tax including State Homestead	State Tax on Non-Homestead	SPECIAL TAXES	TOTAL TAXES							
							Homestead Up to \$4,000 20%	Over \$4,000 and Non-Homestead 33 1/3%	Homestead Up to \$4,000 25%	Over \$4,000 and Non-Homestead 40%																										Rate	Rate	\$	cts.	\$	cts.	\$
State of Minnesota		Lot 1 13140 28																																								
State of Minnesota																																										
State of Minnesota		Lot 2																																								
State of Minnesota																																										
State of Minnesota																																										
State of Minnesota																																										
Herbert C. & Bertha K. Studer		2.6 acs of Lot 5 N. of river			260																																					
Gracie H. & Minnie Carlson		Lot 3			21										98			2090	46		2136																					
Herbert C. & Bertha K. Studer		Lot 4			3640										206			4392	96		4488																					
Gracie H. & Minnie Carlson		Lot 5			4390										214.204 Carlson			4562	98		4660																					
State of Minnesota		Lot 7																																								
State of Minnesota																																										
State of Minnesota		Lot 6																																								

Division of Assessment on file (1954)

PAID IN FULL MAY 10 1954
 Balance Paid DEC 1 1954
 Part Paid DEC 6 1954

*has divided 11/15/54
 Carlson share paid in full
 Studer share in full*

MARCO PASC
 MARCO PASC
 MARCO PASC
 MARCO PASC

Assessment Roll and Tax List of Real Property in the *Town* of *Wabedo*

Cass County, Minnesota, for Taxes for the Year 1953.

Form 5CD

MINN. (53) STATE TAX DEPARTMENT, ST. PAUL

IN WHOSE NAME ASSESSED	TO WHOM TRANSFERRED	DESCRIPTION OF PROPERTY			TRUE AND FULL VALUATIONS				ASSESSED VALUATIONS				FINAL EQUALIZED VALUE	SOLD FOR TAXES	VALUATIONS BY SCHOOL DISTRICTS AS EQUALIZED BY DEPARTMENT OF TAXATION						SPECIAL TAXES	TOTAL TAXES	PAID	WHEN PAID	Number of Receipt	March Settlement 1954	June Settlement 1954	November Settlement 1954	Collections to First Monday in January 1955	Delinquent on First Monday in January 1955	Total Delinquent Tax and Penalty	REMARKS							
					LAND EXCLUSIVE OF STRUCTURES AND IMPROVEMENTS	BUILDINGS AND OTHER STRUCTURES	MACHINERY PERMANENTLY ATTACHED TO REAL ESTATE	TOTAL TRUE AND FULL VALUE	RURAL Homestead Up to \$4,000 20%	RURAL Over \$4,000 and Non-Homestead 33 1/3%	ALL OTHER Homestead Up to \$4,000 25%	ALL OTHER Over \$4,000 and Non-Homestead 40%			MACHINERY PERMANENTLY ATTACHED TO REAL ESTATE 33 1/3%	TOTAL ASSESSED VALUE	Total Assessed Value as Equalized by the Board of Review	District No.	District Rate	District No.													District Rate	District No.	District Rate	District No.	District Rate	Tax including State Homestead	State Tax on Non-Homestead
Acres	100ths	Sec. by Lot	Town or Block	Reg.	Dollars	Dollars	Dollars	Dollars	Dollars	Dollars	Dollars	Dollars	Dollars	Dollars	Dollars	Dollars	Dollars	Dollars	\$ cts.	\$ cts.	\$ cts.	\$ cts.	\$ cts.	\$ cts.	\$ cts.	\$ cts.	\$ cts.	\$ cts.	\$ cts.	\$ cts.	\$ cts.	\$ cts.	\$ cts.						
<i>John & Elizabeth Spence</i>																																							
"																																							
"																																							
"																																							
<i>North Central Area Council of Young Men Christian Association</i>																																							
<i>Frank & Lucie M. Dierck</i>																																							
<i>North Central Area Council of Young Men Christian Association</i>																																							

WABEDO PARS WABEDO SERIALS IOWA POINT WABEDO'S ADDITION

Assessment Roll and Tax List of Real Property in the Town of Wakefield

Cass County, Minnesota, for Taxes for the Year 1953.

Table with columns: IN WHOSE NAME ASSESSED, TO WHOM TRANSFERRED, DESCRIPTION OF PROPERTY, TRUE AND FULL VALUATIONS, ASSESSED VALUATIONS, EVALUATIONS BY SCHOOL DISTRICTS AS EQUALIZED BY DEPARTMENT OF TAXATION, SOLD FOR TAXES, PAID, WHEN PAID, etc.

Assessment Roll and Tax List of Real Property in the Town of Wakarusa

Cass County, Minnesota, for Taxes for the Year 1953.

IN WHOSE NAME ASSESSED	TO WHOM TRANSFERRED	DESCRIPTION OF PROPERTY				TRUE AND FULL VALUATIONS							FINAL EQUALIZED VALUE	VALUATIONS BY SCHOOL DISTRICTS AS EQUALIZED BY DEPARTMENT OF TAXATION						SPECIAL TAXES	TOTAL TAXES	PAID	WHEN PAID	Number of Receipt	March Settlement 1954	June Settlement 1954	November Settlement 1954	Penalty	Collection to First Monday in January 1953	Penalty	Delinquent on First Monday in January 1953	Total Delinquent Tax and Penalty	REMARKS						
		SUBDIVISION	Sec. or Lot	Town or Block	Rng.	Number of Acres of Land	LAND Exclusive of Structures and Improvements	BUILDINGS and Other Structures	MACHINERY Permanently Attached to Real Estate	TOTAL True and Full Value	RURAL			ALL OTHER		MACHINERY Permanently Attached to Real Estate	TOTAL ASSESSED VALUE	Total Assessed Value as Equalized by the Board of Review	District No.															District Rate	District No.	District Rate	District No.	District Rate	
											Acres	100ths		Homestead Up to \$4,000 20%	Over \$4,000 and Non-Homestead 33 1/3%																								Homestead Up to \$4,000 25%
Albert Hughes	State of Minnesota	NE 1/4 of NE 1/4	Lot 2	19.140	28	3325										1	132					2814	62	28176	1	PAID IN FULL	MAY 31 1954	12336		2876									
State of Minnesota		NW 1/4 of NE 1/4														2																							
State of Minnesota		NW 1/4 of NE 1/4														3																							
William A. Liskey		NW 1/4 of NE 1/4	Lot 1			27										4	108					2302	50	2352	4	PAID IN FULL	MAY 31 1954	12337		2352									
		NE 1/4 of NW 1/4				40										5																							
Willis Land Co.		NW 1/4 of NW 1/4	Lot 3			32.12										6	90					1918	42	1960	6	PAID IN FULL	MAY 31 1954			1960									
"	"	SW 1/4 of NW 1/4	Lot 4			32.04										7	128					2396	50	2398	7	PAID IN FULL	MAY 31 1954			2396							3.94 Abated		
M. L. Johnson		SE 1/4 of NW 1/4				40										8	128					2396	50	2398	8	PAID IN FULL	MAY 31 1954			2398							3.92 Abated		
"	"	NE 1/4 of SW 1/4				40										9	90					1918	42	1960	9														
State of Minnesota		NW 1/4 of SW 1/4	Lot 5			31.96										10																							
Erick & Karin Wikstrom		SW 1/4 of SW 1/4	Lot 6			31.88										11																							
Adolph & Alma Nelson		SE 1/4 of SW 1/4				40										12																							
Peter & Olga Zumbansen		1.3 acs of Lot 7														13	4129					2750		2750	13	PAID IN FULL	APR 30 1954	5716		2750									
H. A. Clark		NE 1/4 of SE 1/4	by part of Lot 7			16										14	456					1194		1194	14	PAID IN FULL	MAY 31 1954	12338		1194									
"		NW 1/4 of SE 1/4				40										15																							
Adolph & Alma Nelson		SW 1/4 of SE 1/4	Lot 7 less 1.3 acs			36										16	29					618	14	632	16	PAID IN FULL	MAY 31 1954	8244		632									
H. A. Clark		SE 1/4 of SE 1/4	Lot 8			32.50										17	132					2814	62	2876	17	PAID IN FULL	AUG 5 1954	11382								2876 72			
H. A. Clark		SE 1/4 of SE 1/4	Lot 8			32.50										18						5200	44	5244	18	PAID IN FULL	MAY 31 1954	12338		5244									
H. A. Liskey		that part of the NW 1/4 of SE 1/4				24										19						5178	48	5226	19	PAID IN FULL	MAY 31 1954	8244		5226									
		1/4 of NW 1/4 of SE 1/4				496.75										20	78					1664	36	1900	20	PAID IN FULL	MAY 31 1954	12337		1900									
																	H 185					10378																	
																	1005					25378	562	36310						28728		2876							
																	1190					35748																	

MARIBO PASS MARIBO SERIALS LOMA POINT MARIBO'S ADDITION

Assessment Roll and Tax List of Real Property in the Town of Wabeka

Cass County, Minnesota, for Taxes for the Year 1953.

IN WHOSE NAME ASSESSED	TO WHOM TRANSFERRED	DESCRIPTION OF PROPERTY				TRUE AND FULL VALUATIONS				ASSESSED VALUATIONS					FINAL EQUALIZED VALUE					
		SUBDIVISION	Sec. or Lot	Town or Block	Rng.	Number of Acres of Land	LAND EXCLUSIVE OF STRUCTURES AND IMPROVEMENTS	BUILDINGS AND OTHER STRUCTURES	MACHINERY PERMANENTLY ATTACHED TO REAL ESTATE	TOTAL TRUE AND FULL VALUE	RURAL		ALL OTHER			MACHINERY PERMANENTLY ATTACHED TO REAL ESTATE	TOTAL ASSESSED VALUE	Total Assessed Value as Equalized by the Board of Review		
											Acres	100ths	Homestead Up to \$4,000 20%	Over \$4,000 and Non-Homestead 33 1/4%					Homestead Up to \$4,000 25%	Over \$4,000 and Non-Homestead 40%
											Dollars	Dollars	Dollars	Dollars					Dollars	Dollars
State of Minnesota		NE 1/4 of NE 1/4																		
State of Minnesota		NW 1/4 of NE 1/4																		
State of Minnesota		SW 1/4 of NE 1/4																		
State of Minnesota		SE 1/4 of NE 1/4																		
Thomas J. & Mae Rose McKeever		Lot 3			39															
W. L. & Lucille A. Sholes		Lot 1			42.75															
		NW 1/4 NW 1/4																		
David A. Johnson		SW 1/4 of NW 1/4			38.75															
State of Minnesota		SE 1/4 of NW 1/4																		
Harvey W. Chapin, et al		1/2 of Lot 4 lying N. of Sec. 18, T. 20, R. 157																		
State of Minnesota		NE 1/4 of SW 1/4																		
		NW 1/4 of SW 1/4																		
Andrew J. & Blanche A. Pearson		1/2 of SW 1/4 of SW 1/4 Lot 4 49' 20" N. edge of			18.53															
Willet & Bernice F. Maile		Lot 5 SE 1/4 of SW 1/4 - Sec. 19 1st ac.			36.85															
State of Minnesota		NE 1/4 of SE 1/4																		
State of Minnesota		NW 1/4 of SE 1/4																		
Willet & Bernice F. Maile		SW 1/4 of SE 1/4			40															
State of Minnesota		SE 1/4 of SE 1/4																		

(continued on next page)

SOLD FOR TAXES	VALUATIONS BY SCHOOL DISTRICTS AS EQUALIZED BY DEPARTMENT OF TAXATION						Tax Including State Homestead	State Tax on Non-Homestead	SPECIAL TAXES	TOTAL TAXES	PAID	WHEN PAID	Number of Receipt	March Settlement 1954	June Settlement 1954	Penalty	November Settlement 1954	Penalty	Collections to First Monday in January 1955	Penalty	Delinquent on First Monday in January 1955	Total Delinquent Tax and Penalty	REMARKS
	District No.	District No.	District No.	District No.	District No.	District No.																	
	Rate	Rate	Rate	Rate	Rate	Rate																	

40
904
944

376 = 436
192 = 1096
558 = 1532

137 14
201 26 512
338 48

343 52

WABEBO PASS
WABEBO SPRINGS
TOWNA POINT
MAYNARD'S ADDITION

Assessment Roll and Tax List of Real Property in the *Dowry* of *Nakela*

Cass County, Minnesota, for Taxes for the Year 1953.

Form SCD
3-22-53

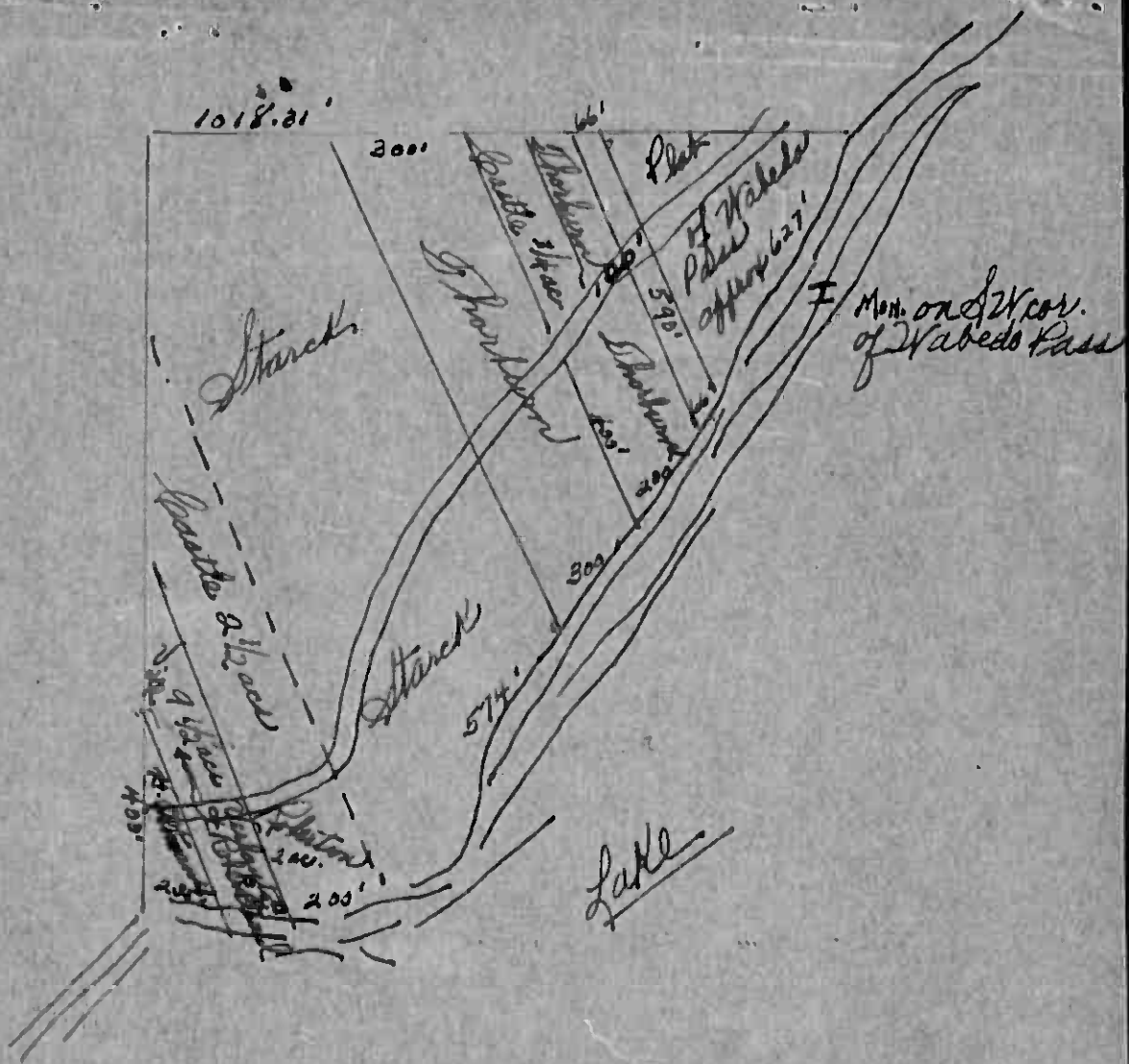
IN WHOSE NAME ASSESSED	TO WHOM TRANSFERRED	DESCRIPTION OF PROPERTY				TRUE AND FULL VALUATIONS				ASSESSED VALUATIONS					FINAL EQUALIZED VALUE	SOLD FOR TAXES	VALUATIONS BY SCHOOL DISTRICTS AS EQUALIZED BY DEPARTMENT OF TAXATION						SPECIAL TAXES	TOTAL TAXES	PAID	WHEN PAID	Number of Receipt	March Settlement 1954	June Settlement 1954	Penalty	November Settlement 1954	Penalty	Collections to First Monday in January 1955	Penalty	Delinquent on First Monday in January 1955	Total Delinquent Tax and Penalty	REMARKS					
		SUBDIVISION	Sec. of Lot	Town or Block	Rng.	Number of Acres of Land	LAND Exclusive of Structures and Improvements	BUILDINGS and Other Structures	MACHINERY Permanently Attached to Real Estate	TOTAL True and Full Value	RURAL		ALL OTHER				MACHINERY Permanently Attached to Real Estate	TOTAL ASSESSED VALUE	Total Assessed Value as Equalized by the Board of Review	District No.	District No.	District No.																District No.	District No.	District No.	Tax including State Homestead	State Tax on Non-Homestead
											Acres	H0.0a	Up to \$4,000 20%	Over \$4,000 and Non-Homestead 33 1/3%						Up to \$4,000 25%	Over \$4,000 and Non-Homestead 40%	33 1/3%																Dollars	Dollars	Dollars	Dollars	Dollars
State of Minnesota		NE 1/4 of NE 1/4				Lot 1	24 1/4 28																																			
State of Minnesota		NW 1/4 of NE 1/4				Lot 2																																				
		SW 1/4 of NE 1/4																																								
		SE 1/4 of NE 1/4																																								
State of Minnesota		NE 1/4 of NW 1/4				Lot 4																																				
State of Minnesota		NW 1/4 of NW 1/4																																								
State of Minnesota		SW 1/4 of NW 1/4																																								
State of Minnesota		SE 1/4 of NW 1/4				Lot 3																																				
		NE 1/4 of SW 1/4																																								
State of Minnesota		NW 1/4 of SW 1/4																																								
State of Minnesota		SW 1/4 of SW 1/4																																								
State of Minnesota		SE 1/4 of SW 1/4																																								
		NE 1/4 of SE 1/4				Lot 5																																				
State of Minnesota		NW 1/4 of SE 1/4																																								
State of Minnesota		SW 1/4 of SE 1/4																																								
State of Minnesota		NE 1/4 of SE 1/4																																								

MARBEO PASS

MARBEO SPRING

TOMA POINT

MARDER'S ADDITION



Good Lots

27-140-28

4467 acs

- THORBURN . Strip 200' wide of Lot 8 lying between lake & road, and being parallel to and 66' from SW line of Lot 1 Plat of Wabedo Pass. 1.39 acres
- THORBURN Strip 100' wide of Lot 8 lying between road & north line of Lot 8 and being parallel to and 66' from extended SW line of Lot 1, plat of Wabedo Pass .61 acres
- Bim Castle Strip 100' wide of Lot 8 lying between road and north line of lot 8 and being parallel to and 166' from extended SW line of Lot 1, Plat of Wabedo Plat.
- ROBERSTEAD strip ~~100'~~^{200'} wide of Lot 8 between lake & road and lying adjacent to and SW of a line parallel to and 1140' distant from SW line of Lot 1, Plat of Wabedo Pass. 2 acs.
- Bim Castle Strip 200' wide of Lot 8 between road and west line of Lot 8 and lying adjacent to and SW of an extended line parallel to and 1140' distant from SW line of Lot 1, Plat of Wabedo Pass.
- VERLAUTZ & ROBERSTEAD All that part of Lot 8 lying SW of a line which is parallel to and 1340' distant from SW line of Lot 1, Plat of Wabedo Pass. less the W. 235' (about 2 acres) to Oltmans 9.5
- Harm OLTMANS The west 235' of Lot 8, 27-14e-28 extending from Wabedo Lake on the South and running North approximately 400' to the pot hole, containing 2 acres more or less.
- ADOLPH E. & EFFIE
L. STARCK A. strip 874' wide of Lot 8, lying adjacent to and SW of extended line parallel to and 266' distant from SW line of Lot 1, Plat of Wabedo Pass, less E'ly 300' 29.17 acs.
- LLOYD M. & ROSE
THORBURN A strip 300' wide between lake & N. line of Lot 8 & being parallel to & 266' from extended SW line of Lot 1, Plat of Wabedo Pass.

Form SCD

IN WHOSE NAME ASSESSED	TO WHOM TRANSFERRED	DESCRIPTION OF PROPERTY			TRUE AND FULL VALUATIONS			ASSESSED VALUATIONS					FINAL EQUALIZED VALUE	SOLD FOR TAXES	VALUATIONS BY SCHOOL DISTRICTS AS EQUALIZED BY DEPARTMENT OF TAXATION										REMARKS											
		SUBDIVISION	Sec. or Lot	Town or Block	Number of Acres of Land	LAND Exclusive of Structures and Improvements	BUILDINGS and Other Structures	MACHINERY Permanently Attached to Real Estate	ASSESSED VALUATIONS						TOTAL ASSESSED VALUE	Total Assessed Value as Equalized by the Board of Review	VALUATIONS BY SCHOOL DISTRICTS AS EQUALIZED BY DEPARTMENT OF TAXATION					SPECIAL TAXES	TOTAL TAXES	PAID		WHEN PAID	Number of Receipt	March Settlement 1954	June Settlement 1954	November Settlement 1954	Collections to First Monday in January 1955	Delinquent on First Monday in January 1955	Total Delinquent Tax and Penalty			
									Acres	100ths	Indicate Improved Yes or No	Indicate Agricultural Yes or No					RURAL	ALL OTHER	MACHINERY	VALUATIONS BY SCHOOL DISTRICTS AS EQUALIZED BY DEPARTMENT OF TAXATION																
									Rate	Rate	Rate	Rate					Rate	Rate	Rate	Rate	Rate													Rate	Rate	Rate
State of Minnesota		1	NE 1/4 of NE 1/4	31	14028																															
State of Minnesota		2	NW 1/4 of NE 1/4																																	
State of Minnesota		3	SW 1/4 of NE 1/4																																	
State of Minnesota		4	SE 1/4 of NE 1/4																																	
Franklin Transformer Mfg Co.		6	NE 1/4 of NW 1/4 of Lot 1		120																															
"		7	NW 1/4 of NW 1/4 of Lot 1		875												134	2858	62	2920	6 PAID IN FULL MAY 31 1954															
"		8	SW 1/4 of NW 1/4 Lot 2		2265												45	960	20	980	7 PAID IN FULL MAY 31 1954															
"		9	SE 1/4 of NW 1/4 Lot 3		3950												115	2452	54	2506	8 PAID IN FULL MAY 31 1954															
		10															130	2772	60	2832	9 PAID IN FULL MAY 31 1954															
State of Minnesota		11	NE 1/4 of SW 1/4																																	
Franklin Transformer Mfg Co.		12	NW 1/4 of SW 1/4 Lot 4		2425												87	1856	40	1896	12 PAID IN FULL MAY 31 1954															
"		13	SW 1/4 of SW 1/4 Lot 5		34												100	2632	46	2178	13 PAID IN FULL MAY 31 1954															
Arthur R. Thompson		14	SE 1/4 of SW 1/4		40												80	1706	38	1744																
State of Minnesota		15																																		
State of Minnesota		16	NE 1/4 of SE 1/4																																	
State of Minnesota		17	NW 1/4 of SE 1/4																																	
Arthur R. Thompson		18	SW 1/4 of SE 1/4		40												80	1706	38	1744																
"		19	SE 1/4 of SE 1/4		40												80	1706	38	1744																
		20			26115																															
																		851	18148	396	18544															

VABEBO PASS
VABEBO SPRING
TOM POINT
VANDER'S ADDITION

Assessment Roll and Tax List of Real Property in the Town of Wabeka

Form 500
MINNESOTA (53) JULY 1952 EDITION, UNREVISED

IN WHOSE NAME ASSESSED	TO WHOM TRANSFERRED	DESCRIPTION OF PROPERTY		TRUE AND FULL VALUATIONS										FINAL EQUALIZED VALUE		
				SUBDIVISION		LAND Exclusive of Structures and Improvements	BUILDINGS and Other Structures	MACHINERY Permanently Attached to Real Estate	RURAL		ALL OTHER				TOTAL ASSESSED VALUE	
				Sec. or Lot	Town or Block				Number of Acres of Land	Total True and Full Value	Homestead	Over \$4,000 and Non-Homestead	MACHINERY Permanently Attached to Real Estate			TOTAL ASSESSED VALUE
											Up to \$4,000 20%	33 1/3%				
1	Otto Haack	NE 1/4 of NE 1/4 Lot 1	34 140 28 38	2350	70											
2	" "	NW 1/4 of NE 1/4 Lot 2	3995													
3	State of Minnesota	SW 1/4 of NE 1/4														
4	State of Minnesota	SE 1/4 of NE 1/4														
5	State of Minnesota															
6	State of Minnesota	NE 1/4 of NW 1/4														
7	Ralph F. & Louise Felton	NW 1/4 of NW 1/4 Lot 3	2350	70												
8	A. G. & Irene L. Telford	SW 1/4 of NW 1/4 Lot 4	38													
9	State of Minnesota	SE 1/4 of NW 1/4														
10	State of Minnesota															
11	State of Minnesota	NE 1/4 of SW 1/4														
12	State of Minnesota	NW 1/4 of SW 1/4														
13	State of Minnesota	SW 1/4 of SW 1/4														
14	State of Minnesota	SE 1/4 of SW 1/4														
15	State of Minnesota															
16	State of Minnesota	NE 1/4 of SE 1/4														
17	State of Minnesota	NW 1/4 of SE 1/4														
18	State of Minnesota	SW 1/4 of SE 1/4														
19	State of Minnesota	SE 1/4 of SE 1/4														
20																

13945

Cass County, Minnesota, for Taxes for the Year 1953.

SOLD FOR TAXES	VALUATIONS BY SCHOOL DISTRICTS AS EQUALIZED BY DEPARTMENT OF TAXATION						Tax including State Homestead	State Tax on Non-Homestead	SPECIAL TAXES	TOTAL TAXES	PAID	WHEN PAID	Number of Receipt	March Settlement 1954	June Settlement 1954	November Settlement 1954	Penalty	Collections to First Monday in January 1955	Penalty	Delinquent on First Monday in January 1955	Total Delinquent Tax and Penalty	REMARKS	
	District No.	District No.	District No.	District No.	District No.	District No.																	
	Rate	Rate	Rate	Rate	Rate	Rate																	
	Mills	Mills	Mills	Mills	Mills	Mills																	
1						221	47 12	102	48 14	1												2nd Half Paid OCT 30 1954 1st Half Paid MAY 2 1954	
2						120	25 68	56	26 14	2												1st Half Paid MAY 2 1954	
3																							
4																							
5																							
6																							
7						30	6 40	14	6 54													PAID IN FULL OCT 30 1954 16137	
8	SOLD FOR TAXES					136	27 72	60	28 32														654 23
9																							
10																							
11																							
12																							
13																							
14																							
15																							
16																							
17																							
18																							
19																							
20																							

1501

106 82 232

109 14

37 14

4 268

28 32

DEPT. PASS
MINNESOTA
WABEKO SERIAL
LOWA POINT
MANKATO'S ADDITION

Assessment Roll and Tax List of Real Property in the Down of Wabedo

Cass County, Minnesota, for Taxes for the Year 1953.

IN WHOSE NAME ASSESSED	TO WHOM TRANSFERRED	DESCRIPTION OF PROPERTY				TRUE AND FULL VALUATIONS				ASSESSED VALUATIONS						FINAL EQUALIZED VALUE	
		SUBDIVISION	Sec. or Lot	Town or Block	No. of Acres of Land	LAND Exclusive of Structures and Improvements	BUILDINGS and Other Structures	MACHINERY Permanently Attached to Real Estate	TOTAL True and Full Value	RURAL		ALL OTHER		MACHINERY Permanently Attached to Real Estate	TOTAL ASSESSED VALUE		Total Assessed Value as Equalized by the Board of Review
										Homestead Up to \$4,000 20%	Over \$4,000 and Non-Homestead 33 1/3%	Homestead Up to \$4,000 25%	Over \$4,000 and Non-Homestead 40%				
State of Minnesota		NE 1/4 of NE 1/4		36 1/4 28													
State of Minnesota		NW 1/4 of NE 1/4															
State of Minnesota		SW 1/4 of NE 1/4															
State of Minnesota		SE 1/4 of NE 1/4															
State of Minnesota		NE 1/4 of NW 1/4															
State of Minnesota		NW 1/4 of SW 1/4															
State of Minnesota		SW 1/4 of NW 1/4															
State of Minnesota		SE 1/4 of NW 1/4															
State of Minnesota		NE 1/4 of SW 1/4															
State of Minnesota		NW 1/4 of SW 1/4															
State of Minnesota		SW 1/4 of SW 1/4															
State of Minnesota		SE 1/4 of SW 1/4															
State of Minnesota		NE 1/4 of SE 1/4															
State of Minnesota		NW 1/4 of SE 1/4															
State of Minnesota		SW 1/4 of SE 1/4															
State of Minnesota		SE 1/4 of SE 1/4															
Grand Total					9484 53												

SOLD FOR TAXES	VALUATIONS BY SCHOOL DISTRICTS AS EQUALIZED BY DEPARTMENT OF TAXATION						Tax including State Homestead	State Tax on Non-Homestead	SPECIAL TAXES	TOTAL TAXES	PAID	WHEN PAID	Number of Receipts	March Settlement 1954	June Settlement 1954	Penalty	November Settlement 1954	Penalty	Collections to First Monday in January 1955	Penalty	Delinquent on First Monday in January 1955	Total Delinquent Tax and Penalty	REMARKS	
	District No.	District No.	District No.	District No.	District No.	District No.																		
	Rate	Rate	Rate	Rate	Rate	Rate																		

WABEBO PASS WABEBO SPRING LONA POINT WABEBO'S ADDITION

IN WHOSE NAME ASSESSED	TO WHOM TRANSFERRED	DESCRIPTION OF PROPERTY	No. School District	Indicate if Agricultural Yes or No	Indicate if Improved Yes or No	TRUE AND FULL VALUATIONS				ASSESSED VALUATIONS					Total Assessed Value as Equalized by the Board of Review	FINAL EQUALIZED VALUE	
						LAND Exclusive of Structures and Improvements	BUILDINGS and Other Structures	MACHINERY Permanently Attached to Real Estate	TOTAL True and Full Value	RURAL		ALL OTHER		MACHINERY Permanently Attached to Real Estate			TOTAL ASSESSED VALUE
										Homestead Up to \$4,000 20%	Over \$4,000 and Non-Homestead 33 1/3%	Homestead Up to \$4,000 25%	Over \$4,000 and Non-Homestead 40%				
J. E. Armstrong		Wabedo Pass															
J. E. Armstrong	James S. Armstrong	Lot 48															
R. J. Andrews																	
S. R. Walker																	
D. R. & Maude Walker		2x20' of 5															
Ellen & Clarence C. Fitzsimmons		Lot 5															
Clarence C. & Sophie Cottrell		6x90' of 6															
Mrs. & Leda Schmidt																	
Geo. H. & Lillian M. Wilson																	
"	"																

SOLD FOR TAXES	VALUATIONS BY SCHOOL DISTRICTS AS EQUALIZED BY DEPARTMENT OF TAXATION						Tax including State Homestead	State Tax on Non-Homestead	SPECIAL TAXES	TOTAL TAXES	PAID	WHEN PAID	Number of Receipt	March Settlement 1954	June Settlement 1954	November Settlement 1954	Penalty	Collections to First Monday in January 1955	Penalty	Delinquent on First Monday in January 1955	Total Delinquent Tax and Penalty	REMARKS
	District No.	District No.	District No.	District No.	District No.	District No.																
	Rate	Rate	Rate	Rate	Rate	Rate																
1						94		21 92	44	22 36	1 PAID IN FULL	FEB 2 1954	40 82	22 36								
2						10		2 34	04	2 38	2 PAID IN FULL	FEB 27 1954	40 83	2 38								
3						62		14 46	48	14 74	3 PAID IN FULL	MAY 31 1954	17 367		4 74							
4						256		59 70	00	60 90												
5						3		70	-	70												
6						39		9 80	78	9 28	6 PAID IN FULL	MAY 20 1954	66 62		9 28							
7						42		9 80	20	10 00	7 PAID IN FULL	MAY 31 1954	12 566		10 00							
8						450		11 66		11 66	8 PAID IN FULL	APR 24 1954	51 60		11 66							
9						10		2 34	04	2 38	9 2nd Half Paid	OCT 30 1954	16 33		1 19							
10						535		124 78	250	127 28	10 1st Half Paid	MAY 31 1954	123 68		63 64		1 19					
11																						
12																						
13																						
14																						
15																						
16																						
17																						
18																						
19																						
20																						

450
1051
1101

256 80 488

261 68

24 74 110 51 64 73

61 60

WABEDO PASS

WABEDO SPRING TOMA POINT WABEDO'S ADDITION

Form 50 (53) ILLINOIS-OLIVE COMPANY, SPRINGFIELD

WABEDO PASS

WABEDO SPRINGS

IOWA POINT

MAUDER'S ADDITION

IN WHOSE NAME ASSESSED	TO WHOM TRANSFERRED	DESCRIPTION OF PROPERTY			TRUE AND FULL VALUATIONS										FINAL EQUALIZED VALUE	SOLD FOR TAXES	VALUATIONS BY SCHOOL DISTRICTS AS EQUALIZED BY DEPARTMENT OF TAXATION						Tax Including State Homestead	State Tax on Non-Homestead	SPECIAL TAXES	TOTAL TAXES	PAID	WHEN PAID	Number of Receipts	March Settlement 1954	June Settlement 1954	November Settlement 1954	Penalty	Collections to First Monday in January 1955	Penalty	Delinquent on First Monday in January 1955	Total Delinquent Tax and Penalty	REMARKS																		
		SUBDIVISION	Sec. or Lot	Town or Block	Number of Acres of Land	LAND Exclusive of Structures and Improvements	BUILDINGS and Other Structures	MACHINERY Permanently Attached to Real Estate	TOTAL True and Full Value	RURAL		ALL OTHER		MACHINERY Permanently Attached to Real Estate			TOTAL ASSESSED VALUE	Total Assessed Value as Equalized by the Board of Review	District No.	District No.	District No.	District No.																	District No.																	
										Rate	Rate	Rate	Rate						Rate	Rate	Mills	Mills																	Mills	Mills	Mills															
<i>Joseph P. Berres & Emma C. Berres</i>	<i>Charles Hammett, Marvin W. & Marie E. Lityquist</i>	<i>Mauder's Addition (Part of Lot 3 Sec. 3-140-28)</i>	1																																																					
<i>Joseph P. Berres & Emma C. Berres</i>	<i>Charles Hammett, Marvin W. & Marie E. Lityquist</i>	<i>Mauder's Addition (Part of Lot 3 Sec. 3-140-28)</i>	2																																																					
<i>Joseph P. Berres & Emma C. Berres</i>	<i>Charles Hammett, Marvin W. & Marie E. Lityquist</i>	<i>Mauder's Addition (Part of Lot 3 Sec. 3-140-28)</i>	3																																																					
<i>Joseph P. Berres & Emma C. Berres</i>	<i>Charles Hammett, Marvin W. & Marie E. Lityquist</i>	<i>Mauder's Addition (Part of Lot 3 Sec. 3-140-28)</i>	4																																																					
<i>Joseph P. Berres & Emma C. Berres</i>	<i>Charles Hammett, Marvin W. & Marie E. Lityquist</i>	<i>Mauder's Addition (Part of Lot 3 Sec. 3-140-28)</i>	5																																																					
			6																																																					
			7																																																					
			8																																																					
			9																																																					
			10																																																					
			11																																																					
			12																																																					
			13																																																					
			14																																																					
			15																																																					
			16																																																					
			17																																																					
			18																																																					
			19																																																					
			20																																																					

H 211 4924 4924 468 3750 1026

