

ASSESSMENT & TAX LIST

Wabedo

1943

Assessor's Report on Tree Bounty in the Town of _____

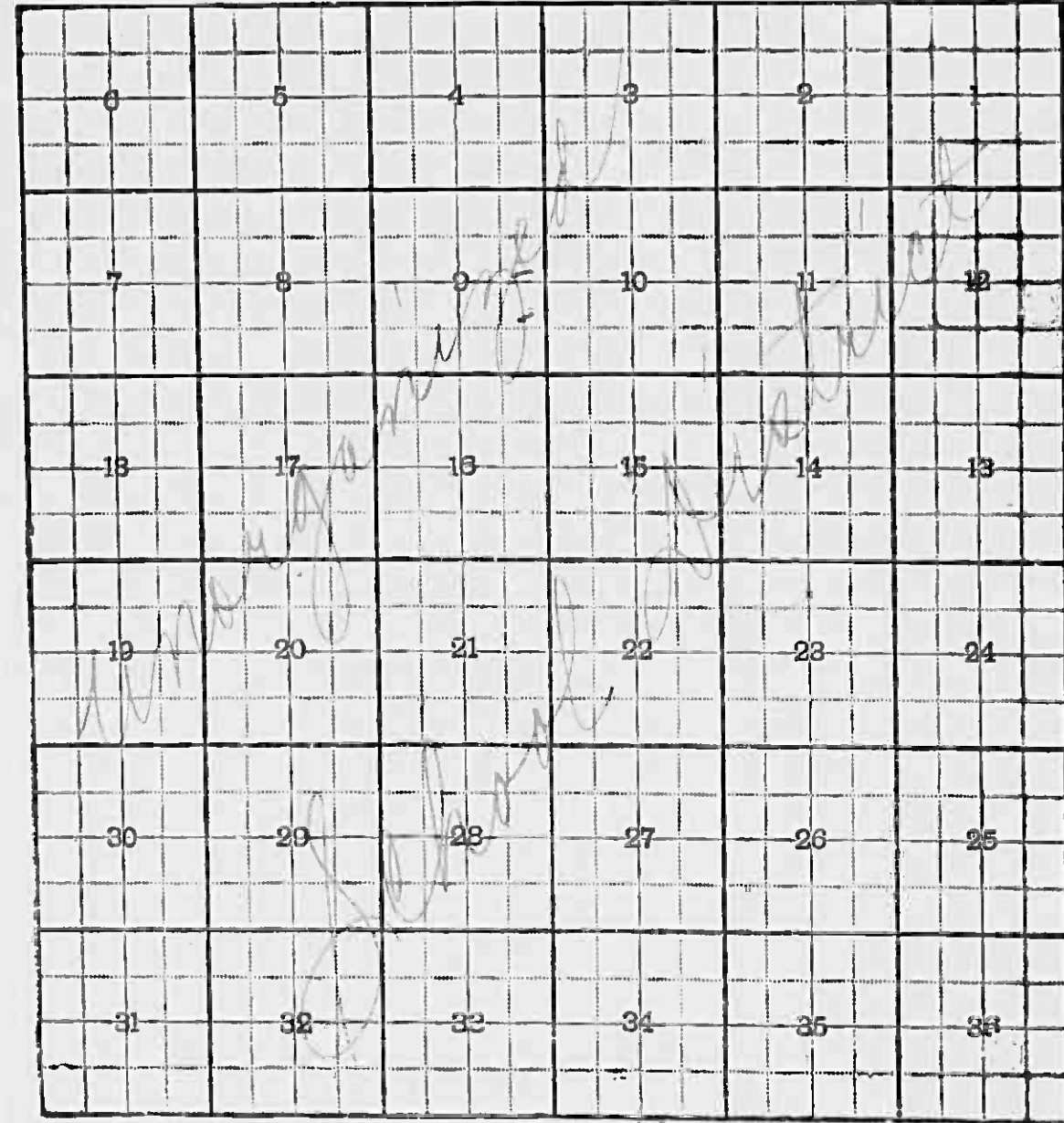
County of _____, Minnesota, 1943.

INDEX TO SECTIONS

SECTION	PAGE
" 1.....	
" 2.....	
" 3.....	
" 4.....	
" 5.....	
" 6.....	
" 7.....	
" 8.....	
" 9.....	
" 10.....	
" 11.....	
" 12.....	
" 13.....	
" 14.....	
" 15.....	
" 16.....	
" 17.....	
" 18.....	
" 19.....	
" 20.....	
" 21.....	
" 22.....	
" 23.....	
" 24.....	
" 25.....	
" 26.....	
" 27.....	
" 28.....	
" 29.....	
" 30.....	
" 31.....	
" 32.....	
" 33.....	
" 34.....	
" 35.....	
" 36.....	

For Convenience of Auditor in Showing Boundaries of School Districts

Township No. 140 Range No. 28 Mer. P. M.



FORM 1

Sec.	Twp.	Range	No. of Acres of Trees	Were Trees Originally Planted not more than 12 feet apart each way	Have the Trees been kept in that condition by replanting all that may have died each year	Condition of Trees	REMARKS

I hereby certify this to be a true statement of the extent and condition of Groves and Lines of Trees in said Town and County, as ascertained by examination as provided by Section 348.03, of Minnesota Statutes 1941.

Dated _____, 1943.

Assessor

Little Boy Lake
Redwood Springs

Assessor's

FORM 316 - JULY 1943 - 1944

NAME OF OWNER

Treasurer's Office, Cass County, Minnesota

RECEIVED this, the first Monday (being the 3rd) day of January, A. D. 1944, of L. G. Peterson, Auditor of said County, Minnesota, the Tax List of all Taxable Real and Personal Property in the Township of Wabedo in said County for the year A. D. 1943, as specified above and amounting to six thousand six hundred and eighteen 9/100 dollars.

W. J. McKeown
County Treasurer

Office of County Treasurer, Cass County, Minnesota

To L. G. Peterson, County Auditor:

Sir:—I herewith return to you the Tax List for the Township of Wabedo in said County for the year 1943, heretofore received from you. I certify that I have compared the same with the duplicate receipts in your office, and have written opposite the amount of each tax so receipted the words "First Quarter Paid", "Second Quarter Paid", "Third Quarter Paid" or "Paid in full" as the case may be, and the number of my receipt given in discharge of said tax, and each tract or lot of real property against which the taxes remain unpaid is delinquent for said year.

Yours respectfully,
W. J. McKeown
County Treasurer

Auditor's Office, Cass County, Minnesota

I, _____ Auditor of said County, and State of Minnesota, do hereby certify that the following is a correct list of the Taxes levied on the Real and Personal Property in the _____ of _____ for the year 1943.

WITNESS my hand and official seal, this _____ day of _____ 1944.

(SEAL) _____
County Auditor.

Auditor's Office, Cass County, Minnesota

I hereby certify that on the first Monday in January 1945, I received of _____ County Treasurer, the Tax List of the _____ of _____ in said County for the year 1943; that I have compared the said list with the Statements receipted for by said Treasurer, which are on file in my office, and that each tract or lot of real property therein against which the taxes, or any part thereof, remains unpaid are delinquent for said year.

(SEAL) _____
County Auditor.

NAME OF OWNER

TABULAR SCHEDULE OF VALUATIONS,

LEVIED IN THE Township OF Habedo

RATES AND TAXES

COUNTY OF CASS, STATE OF MINNESOTA

Table with columns for School District No., Valuation by School Districts (Money and Credits, Land, Town and City Lots, Personal Property, Total Value), Rate of State Taxes, Rate of County Taxes, Rate of Town Taxes, and Rate of School Taxes.

Table for Taxes Levied, including Local Mill and Special School Taxes by Districts, and All Other Taxes (Funds, Rate, Amounts).

Vertical text on the right side containing the Auditor's name (J. L. C. Peterson), date (DEC 31 1943), and official seal area.

SEAL

Assessor's

COLLECTIONS OF TAXES OF 1933, Township Wabedo OF Wabedo, CASS COUNTY, MINNESOTA

FORM 316

NAME OF OWNER

FUNDS	MARCH SETTLEMENT 19 <u>33</u>	JUNE SETTLEMENT 19 <u>33</u>	NOV. SETTLEMENT 19 <u>33</u>	Amount Collected from Nov. 19 <u>33</u> to First Monday in Jan. 19 <u>34</u>	REDUCTIONS <i>30 filed cancellations</i>	Total Reductions and Collected	BALANCE UNCOLLECTED	ADDITIONS	Total Uncollected to First Monday in January, 19 <u>34</u>
State Revenue, State School, Teachers Insurance, State Debt—Non-Homeslead, State Debt—Homeslead,	2228 724	5954 2251	1556 624	316 90					
County Revenue, County Road and Bridge, County Welfare, County Bond and Interest, <i>sewer</i>	13096 2716 21244 11708 362	40709 8442 66035 26374 1126	11285 2340 18305 10089 312	1642 341 2664 1468 45					
Town Revenue, Town Road and Bridge, Town Drag, Town State Loan, <i>fire</i>	3018 6035 604 604 3018	9380 18760 1876 1876 9380	2600 5200 520 520 2600	378 757 76 76 378					
School Local 1 Mill, School Special, School State Loan, <i>Deficiency C.O. B.D.</i>	602 17682 6035 6035 4828 1811	1876 40994 18750 18750 15008 5628	520 10567 5200 5200 4161 1560	76 1513 757 757 605 227					
Money and Credits,									
	102350	303207	83154	13166	74008	21853		2279	67407

	SCHOOL DISTRICT NO.	LOCAL 1 MILL	SPECIAL	STATE LOAN	Deficiency	C.O.	B.D.	TOTALS
MARCH SETTLEMENT	Un.	322 280	6458 11224	3229 2806	5229 2806	2583 2242	969 842	16790 20202
	Totals	602	17682	6035	6035	4828	1811	36973
JUNE SETTLEMENT	Un.	1702 174	34046 6948	17023 1736	17022 1737	12618 1390	5107 521	88518 12506
	Totals	1876	40994	18759	18759	15008	5628	101024
NOVEMBER SETTLEMENT								
	Totals							
NOVEMBER to JANUARY	Un.	76	1513	757	757	605	227	3735
	Totals							3735
ADDITIONS								
	Totals							
REDUCTIONS								
	Totals							

Assessment Roll and Tax List of Unplatted Real Property in the Town of Habersham of Habersham County, Minnesota, for Taxes for the Year 1943.

Form 4 CD

Table with columns: IN WHOSE NAME ASSESSED, TO WHOM TRANSFERRED, DESCRIPTION OF PROPERTY, ASSESSOR'S VALUATION, EQUALIZED VALUES, VALUATIONS BY SCHOOL DISTRICTS AS EQUALIZED BY DEPARTMENT OF TAXATION, Rate and Tax Less Homestead Exemption, State Tax on Non-Homestead, TOTAL GENERAL TAX, SPECIAL TAXES, TOTAL TAXES, PAID, WHEN PAID, Number of Receipt, March Settlement 1944, June Settlement 1944, Penalty, November Settlement 1944, Penalty, Collections to First Monday in January 1945, Penalty, Delinquent on First Monday in January 1945, Total Delinquent Tax and Penalty, REMARKS.

Nellie E. Haddix

Lloyd H. Showalter

Nellie E. Haddix

Bess Dorothy G. Olin

Nellie E. Haddix

Silas E. Showalter

John C. Ford

Assessment Roll and Tax List of Unplatted Real Property in the _____ of _____

Form 4 CD - 1943 - 1944

Table with columns: IN WHOSE NAME ASSESSED, TO WHOM TRANSFERRED, DESCRIPTION OF PROPERTY, ASSESSOR'S VALUATION, EQUALIZED VALUES, VALUATIONS BY SCHOOL DISTRICTS AS EQUALIZED BY DEPARTMENT OF TAXATION, Rate and Tax Less Homestead Exemption, State Tax on Non-Homestead, TOTAL GENERAL TAX, SPECIAL TAXES, TOTAL TAXES, PAID, WHEN PAID, Number of Receipt, March Settlement 1944, June Settlement 1944, Penalty, November Settlement 1944, Penalty, Collections to First Monday in January 1945, Penalty, Delinquent on First Monday in January 1945, Total Delinquent Tax and Penalty, REMARKS

State of Minnesota
Roy H. Rose

John A. + Jeanette Sababa

State of Minnesota
State of Minnesota
State of Minnesota
State of Minnesota

Lola Johnson
State of Minnesota
State of Minnesota

Ralph H. Fuller

1st 1/2 Paid + 10.82 Abated

6.36
6.86
6.86

6.73
6.42

30.90 Abated
05 abated

Assessment Roll and Tax List of Unplatted Real Property in the of Cass County, Minnesota, for Taxes for the Year 1943.

Form 4 CD MILLER-SAYRE COMPANY, MINNEAPOLIS

Table with columns: IN WHOSE NAME ASSESSED, TO WHOM TRANSFERRED, DESCRIPTION OF PROPERTY, ASSESSOR'S VALUATION, EQUALIZED VALUES, VALUATIONS BY SCHOOL DISTRICTS AS EQUALIZED BY DEPARTMENT OF TAXATION, Rate and Tax Less Homestead Exemption, State Tax on Non-Homestead, TOTAL GENERAL TAX, SPECIAL TAXES, TOTAL TAXES, PAID, WHEN PAID, Number of Receipt, March Settlement 1944, June Settlement 1944, Penalty, November Settlement 1944, Penalty, Collections to First Monday in January 1945, Penalty, Delinquent on First Monday in January 1945, Total Delinquent Tax and Penalty, REMARKS.

Harry Matthews
Richard F. Craddock
N.P. Ry. Co.
Larry + Phillipina Matthews

R.A. Manders
Clarence Kinkel + J.G. Scott
Lillian + Cecil C. Carpenter
State of Minnesota

Mrs. Alice G. Pettit
State of Minnesota
State of Minnesota
State of Minnesota

R.D. Peck
H.C. Behrke
Harold J. Ethel, Dorothy + Ralph Olson
Roderick D. Peck

460 35

H 768
W 1330
1598

127 66

Assessment Roll and Tax List of Unplatted Real Property in the of Cass County, Minnesota, for Taxes for the Year 1943.

Form 4 CD BILLS SALES COMPANY, MINNEAPOLIS

Table with columns: IN WHOSE NAME ASSESSED, TO WHOM TRANSFERRED, DESCRIPTION OF PROPERTY, ASSESSOR'S VALUATION, EQUALIZED VALUES, VALUATIONS BY SCHOOL DISTRICTS AS EQUALIZED BY DEPARTMENT OF TAXATION, Rate and Tax Less Homestead Exemption, State Tax on Non-Homestead, TOTAL GENERAL TAX, SPECIAL TAXES, PAID, WHEN PAID, Number of Receipt, March Settlement 1944, June Settlement 1944, Penalty, November Settlement 1944, Penalty, Collections to First Monday in January 1945, Penalty, Delinquent on First Monday in January 1945, Total Delinquent Tax and Penalty, REMARKS.

State of Minnesota

State of Minnesota

State of Minnesota

Carl H. Flink

Walter R. Bill & Fred A. Schauer

H. E. & Anna B. Baker

Thyerhauser et al

Guy L. & Lulu Pugh

Thyerhauser et al

Henry H. Rose

Carl H. Flink

Walter R. Bill & Fred A. Schauer

Walter R. Bill & Fred A. Schauer

Walter R. Bill & Fred A. Schauer

Walter R. Bill & Fred A. Schauer

Abdo Fass

Little Boy Lake

Spring

Spring

Spring

Spring

Assessment Roll and Tax List of Unplatted Real Property in the _____ of _____, Minnesota, for Taxes for the Year 1943.

Unplatted Real Estate Assessed at 33 1/2 Per Cent of True and Full Value; Attached Machinery at 33 1/2 Per Cent of True and Full Value, Homesteads, up to True and Full Value of \$1000, Assessable at 20 per Cent, Class 3B; Remainder at 33 1/2 Per Cent, Class 3.

Table with columns for Assessor's Valuation, Equalized Values, Valuations by School Districts, and Special Taxes. Includes handwritten entries for property owners like 'Hills R. Bell + Fred A. Schauer' and 'Chas. D. Georgia Mann Sparks'.

Vertical text on the right edge of the page, including 'MacEdo Pass' and 'Little Boy Lake'.

Assessment Roll and Tax List of Unplatted Real Property in the of Cass County, Minnesota, for Taxes for the Year 1943. Unplatted Real Estate Assessed at 33 1/3 Per Cent of True and Full Value; Attached Machinery at 33 1/3 Per Cent of True and Full Value, Homesteads, up to True and Full Value of \$4,000, Assessable at 20 per Cent, Class 3B; Remainder at 33 1/3 Per Cent, Class 3.

Table with columns: IN WHOSE NAME ASSESSED, TO WHOM TRANSFERRED, DESCRIPTION OF PROPERTY, ASSESSOR'S VALUATION, EQUALIZED VALUES, VALUATIONS BY SCHOOL DISTRICTS AS EQUALIZED BY DEPARTMENT OF TAXATION, Rate and Tax Less Homestead Exemption, State Tax on Non-Homestead, TOTAL GENERAL TAX, SPECIAL TAXES, TOTAL TAXES, PAID, WHEN PAID, Number of Receipt, March Settlement 1944, June Settlement 1944, November Settlement 1944, Penalty, Collections to First Monday in January 1945, Delinquent on First Monday in January 1945, Total Delinquent Tax and Penalty, REMARKS.

Assessment Roll and Tax List of Unplatted Real Property in the of
Unplatted Real Estate Assessed at 33 1/2 Per Cent of True and Full Value; Attached Machinery at 33 1/2 Per Cent of True and Full Value, Homesteads, up to True and Full Value of \$4000, Assessable at 20 per Cent, Class 3B; Remainder at 33 1/2 Per Cent, Class 3.

Form 4 CD ROLL-TAX LIST, MINNAPOLIS

Table with columns: IN WHOSE NAME ASSESSED, TO WHOM TRANSFERRED, DESCRIPTION OF PROPERTY, ASSESSOR'S VALUATION, EQUALIZED VALUES, SOLD FOR TAXES. Includes handwritten entries for Hugh H. Mercer & E. O. Olson and Grace E. Polk.

57170

Cass County, Minnesota, for Taxes for the Year 1943.

Table with columns: VALUATIONS BY SCHOOL DISTRICTS AS EQUALIZED BY DEPARTMENT OF TAXATION, Rate and Tax Less Homestead Exemption, State Tax on Non-Homestead, TOTAL GENERAL TAX, SPECIAL TAXES, TOTAL TAXES, PAID, WHEN PAID, Number of Receipt, March Settlement 1944, June Settlement 1944, November Settlement 1944, Collections to First Monday in January 1945, Delinquent on First Monday in January 1945, Total Delinquent Tax and Penalty, REMARKS. Includes handwritten entries for 103, 86, 160, 345, 1827, 28598, 776, 29374.

28598

776

29374

Handwritten text on the right edge of the page, including 'Little Boy Lake' and 'Spring'.

Assessment Roll and Tax List of Unplatted Real Property in the _____ of _____

Unplatted Real Estate Assessed at 33 1/2 Per Cent of True and Full Value; Attached Machinery at 33 1/2 Per Cent of True and Full Value, Homesteads, up to True and Full Value of \$4000, Assessable at 20 per Cent, Class 3B; Remainder at 33 1/2 Per Cent, Class 3.

Form 4 C.D. WILCOX-BATES COMPANY, MINNEAPOLIS

IN WHOSE NAME ASSESSED	TO WHOM TRANSFERRED	DESCRIPTION OF PROPERTY					No. School District	Inalienable Homestead	ASSESSOR'S VALUATION					EQUALIZED VALUES			S.O.D. FOR TAXES	
		SUBDIVISION	Sec. or Lot	Town or Block	Range	Number of Acres of Land			STRUCTURES & IMPROVEMENTS		Total True and Full Value of Land Including all Structures, Improvements and Machinery	Assessed Value of Homesteads up to \$4,000 at 20 per cent Class 3B	Assessed Value of Remainder at 33 1/2 per cent Class 3	Total Assessed Value of Land Including all Structures, Improvements and Machinery	Total Assessed Value as Equalized by the Board of Review	Total Assessed Value as Equalized by the County Board		Total Assessed Value as Equalized by the Department of Taxation
									True and Full Value of Buildings and Other Structures	True and Full Value of Machinery Permanently Attached to Real Estate								
State of Minnesota		N-E 1/4 of N-E 1/4			28	40.57												
		N-W 1/4 of N-E 1/4																
		S-W 1/4 of N-E 1/4																
John C. Ford		S-E 1/4 of N-E 1/4																
State of Minnesota		N-E 1/4 of N-W 1/4																
State of Minnesota		N-W 1/4 of N-W 1/4																
		S-W 1/4 of N-W 1/4																
		S-E 1/4 of N-W 1/4																
State of Minnesota		N-E 1/4 of S-W 1/4																
Dr. F.J. Boller		N-W 1/4 of S-W 1/4				33.50												
Margaret A. Pratt		S-W 1/4 of S-W 1/4				33.50												
State of Minnesota		S-E 1/4 of S-W 1/4																
State of Minnesota		N-E 1/4 of S-E 1/4																
State of Minnesota		N-W 1/4 of S-E 1/4																
State of Minnesota		S-W 1/4 of S-E 1/4																
		S-E 1/4 of S-E 1/4																
						107.57												

VALUATIONS BY SCHOOL DISTRICTS AS EQUALIZED BY DEPARTMENT OF TAXATION	Rate and Tax Less Homestead Exemption	State Tax on Non-Homestead	TOTAL GENERAL TAX	SPECIAL TAXES								TOTAL TAXES	PAID	WHEN PAID	Number of Receipt	March Settlement 1944	June Settlement 1944	Penalty	November Settlement 1944	Penalty	Collections to First Monday in January 1945	Penalty	Delinquent on First Monday in January 1945	Total Delinquent Tax and Penalty	REMARKS			
				District No.	District No.	District No.	District No.	District No.	District No.	District No.	District No.																	
				Dollars	Dollars	Dollars	Dollars	Dollars	Dollars	Dollars	Dollars																	
1																												
2																												
3																												
4	52	8.14												8.14		2nd Half Paid 10 23 44 1039											407	407
5																												
6																												
7																												
8																												
9																												
10																												
11																												
12	334	52.30	140											5370		PAID IN FULL JUL 7 1944 799												5370
13	139	2.76	58											2234		PAID IN FULL JUN 20 1944 6451												2234
14																												
15																												
16																												
17																												
18																												
19																												
20																												
	52	82.30	198											8418														

Mapado Press
Little Boy Lake
Sprinkler
Mapado Press
Little Boy Lake

Form 4 CD WALL-BURN COMPANY, MINNEAPOLIS

Table with columns: IN WHOSE NAME ASSESSED, TO WHOM TRANSFERRED, DESCRIPTION OF PROPERTY, ASSESSOR'S VALUATION, EQUALIZED VALUES, VALUATIONS BY SCHOOL DISTRICTS AS EQUALIZED BY DEPARTMENT OF TAXATION, Rate and Tax Less Homestead Exemption, State Tax on Non-Homestead, TOTAL GENERAL TAX, SPECIAL TAXES, TOTAL TAXES, PAID, WHEN PAID, Number of Receipt, March Settlement 1944, June Settlement 1944, Penalty, November Settlement 1944, Penalty, Collections to First Monday in January 1945, Delinquent on First Monday in January 1945, Total Delinquent Tax and Penalty, REMARKS.

Martha L. Jones + June E. Hall + Edwin M. Glicker

Cass Realty Co. James E. Bollens

Henry Pearson

Reuben W. + Ethel E. Bolstad + Reuben J. Halseth + Harold O. + June E. Hall

924

Assessment Roll and Tax List of Unplatted Real Property in the _____ of _____
Unplatted Real Estate Assessed at 33 1/2 Per Cent of True and Full Value; Attached Machinery at 33 1/2 Per Cent of True and Full Value; Homesteads, up to True and Full Value of \$4000, Assessable at 20 per Cent, Class 3B; Remainder at 33 1/2 Per Cent, Class 3.

Cass County, Minnesota, for Taxes for the Year 1943.

Form 4 CD M.L.L. & COMPANY, MINNEAPOLIS

Table with multiple columns: IN WHOSE NAME ASSESSED, TO WHOM TRANSFERRED, SUBDIVISION, ASSESSOR'S VALUATION, EQUALIZED VALUES, VALUATIONS BY SCHOOL DISTRICTS AS EQUALIZED BY DEPARTMENT OF TAXATION, RATE AND TAX LESS HOMESTEAD EXEMPTION, STATE TAX ON NON-HOMESTEAD, TOTAL GENERAL TAX, SPECIAL TAXES, TOTAL TAXES, PAID, WHEN PAID, Number of Receipt, March Settlement 1944, June Settlement 1944, November Settlement 1944, Penalty, Collections to First Monday in January 1945, Delinquent on First Monday in January 1945, Total Delinquent Tax and Penalty, REMARKS.

Dr. R. W. Lillie, John S. & Elizabeth Gaines

SOLD FOR TAXES

PAID IN FULL AUG 24 1944 9688

State of Minnesota
State of Minnesota
State of Minnesota
State of Minnesota

State of Minnesota

74 251 3930 106

4036

25 75

Assessment Roll and Tax List of Unplatted Real Property in the _____ of _____

Cass County, Minnesota, for Taxes for the Year 1943.

Unplatted Real Estate Assessed at 33 1/2 Per Cent of True and Full Value; Attached Machinery at 33 1/2 Per Cent of True and Full Value. Homesteads, up to True and Full Value of \$1000, Assessable at 20 per Cent, Class 3B; Remainder at 33 1/2 Per Cent, Class 3.

Table with columns: IN WHOSE NAME ASSESSED, TO WHOM TRANSFERRED, DESCRIPTION OF PROPERTY, ASSESSOR'S VALUATION, EQUALIZED VALUES, VALUATIONS BY SCHOOL DISTRICTS AS EQUALIZED BY DEPARTMENT OF TAXATION, Rate and Tax Less Homestead Exemption, State Tax on Non-Homestead, TOTAL GENERAL TAX, SPECIAL TAXES, TOTAL TAXES, PAID, WHEN PAID, Number of Receipt, March Settlement 1944, June Settlement 1944, Penalty, November Settlement 1944, Penalty, Collections to First Monday in January 1945, Penalty, Delinquent on First Monday in January 1945, Total Delinquent Tax and Penalty, REMARKS.

State of Minnesota
Harry J. Pearson
Christine C. Miller-Virginia J. Ellsworth
Raymond F. Kinkel
H. Clyde Sheart
Marguerite Oleson
Benton Bros., Inc.
Ruth Arilla Smith
Edward A. Merrick
Emily C. Poper-Mary N. Elisan
Raymond F. Kinkel
Benton Bros., Inc.
John H. Hart
John Ebdahl
John H. Hart
Lester J. Brooks

1 NE 1/4 of NE 1/4 17 140 28
2 NW 1/4 of NE 1/4 Lot 1 27 50
3 SW 1/4 of NE 1/4 NW 1/2 of Lot 2 less 11 ac. 14
4 SE 1/4 of NE 1/4 40
5 4 ac. of S 1/2 of Lot 2 4
6 NE 1/4 of NW 1/4 66 on lake of Lot 2 1
7 NW 1/4 of NW 1/4 5185' of Lot 2 9
8 7x5' long x 60' wide of S 1/2 of Lot 2 SW 1/4 of NW 1/4 5 1/2 of Lot 2 1
9 SE 1/4 of NW 1/4
10 About 1 acre of NW 1/4 of Lot 2 1
11 NE 1/4 of SW 1/4
12 NW 1/4 of SW 1/4
13 SW 1/4 of SW 1/4
14 SE 1/4 of SW 1/4
15 5' of Lot 4 less } 15 50
150 ft. no. 20 from NW corner }
16 NE 1/4 of SE 1/4 40
17 NW 1/4 of SE 1/4 Lot 3 49 50
18 SW 1/4 of SE 1/4 NW 1/4 of Lot 4 4
19 SE 1/4 of SE 1/4 Lot 5 18 75
20 S 3/4 of NW 1/4 of Lot 4 12
150' N x S from NW cor of S 1/2 of Lot 4 50
237 75

1
2 288
3 100
4 182
5 106
6 9
7 309
8 9
9
10 79
11
12
13
14
15 216
16 69
17 215
18 14
19 58
20 338
949
1043
1992

4510
1536 42
2850
1660 44
140 04
4838 130
140 04
1238 34

4510
1608 13
2850 4
1704 5
1446
4968 7
144 8
1292
3472
1080
3456
220
908
5294
31630

PAID WHEN PAID
JUL 7 1944
JUN 14 1944
MAY 31 1944
JAN 29 1944
FEB 23 1944
MAR 27 1944
JUL 6 1944
JUL 23 1944
JUN 6 1944
OCT 31 1944
MAY 31 1944
MAR 27 1944
MAY 26 1944
MAY 26 1944
MAY 26 1944

REMARKS
Refund W# 75010 6-14-44 \$3.36
3.36 over

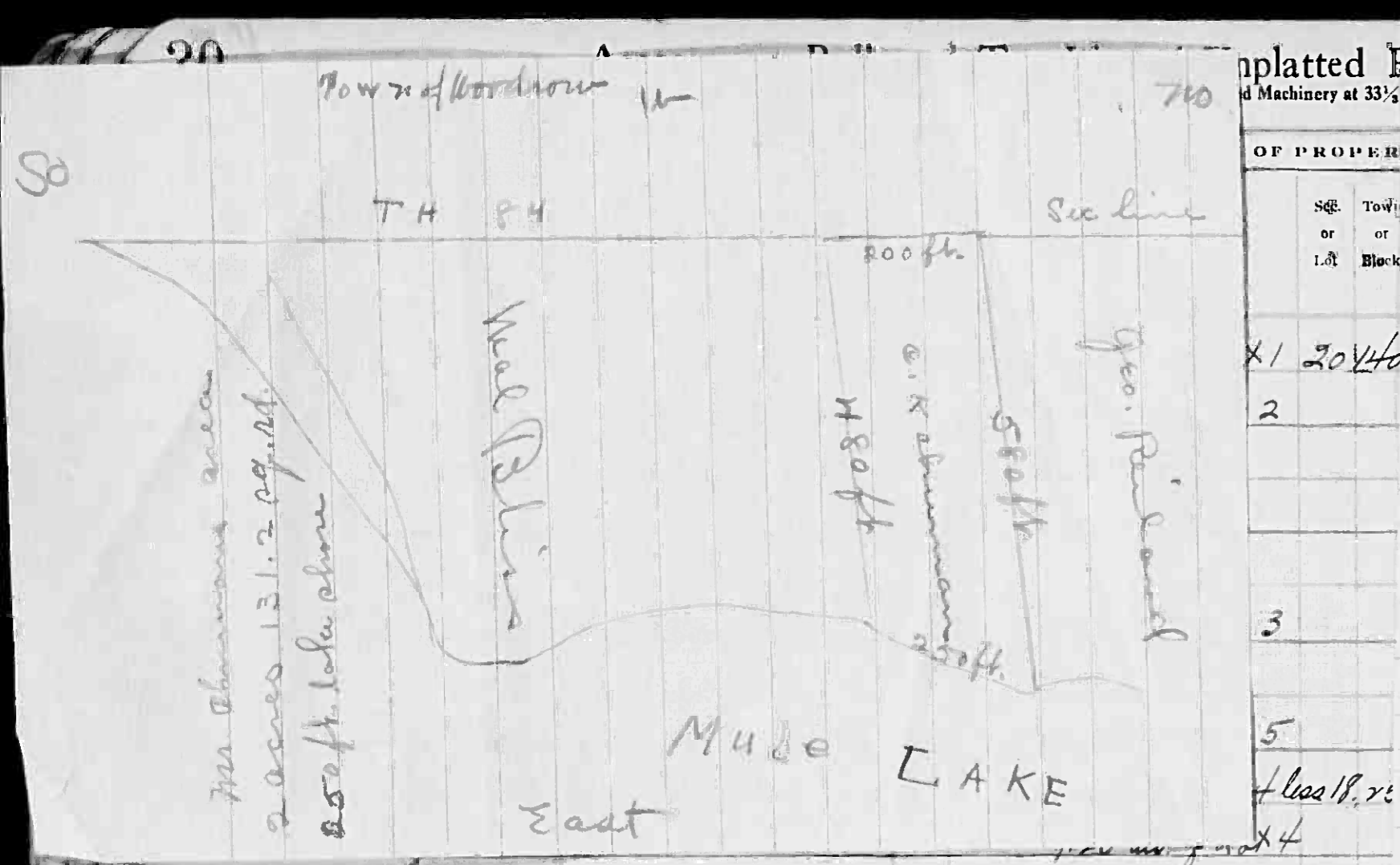
Form 4 CD - L.S.P. - BAYNE COMPANY, MINNEAPOLIS

Table with columns: IN WHOSE NAME ASSESSED, TO WHOM TRANSFERRED, DESCRIPTION OF PROPERTY, ASSESSOR'S VALUATION, EQUALIZED VALUES, VALUATIONS BY SCHOOL DISTRICTS AS EQUALIZED BY DEPARTMENT OF TAXATION, Rate and Tax Levied on Homestead Exemption, State Tax on Non-Homestead, TOTAL GENERAL TAX, SPECIAL TAXES, TOTAL TAXES, PAID, WHEN PAID, Number of Receipt, March Settlement 1944, June Settlement 1944, Penalty, November Settlement 1944, Penalty, Collections to First Monday in January 1945, Penalty, Delinquent on First Monday in January 1945, Total Delinquent Tax and Penalty, REMARKS.

Main data table with columns: IN WHOSE NAME ASSESSED, TO WHOM TRANSFERRED, DESCRIPTION OF PROPERTY, ASSESSOR'S VALUATION, EQUALIZED VALUES, VALUATIONS BY SCHOOL DISTRICTS AS EQUALIZED BY DEPARTMENT OF TAXATION, Rate and Tax Less Homestead Exemption, State Tax on Non-Homestead, TOTAL GENERAL TAX, SPECIAL TAXES, TOTAL TAXES, PAID, WHEN PAID, Number of Receipt, Settlement, June Settlement, Penalty, November Settlement, Collections to First Monday in January 1945, Delinquent on First Monday in January 1945, Total Delinquent Tax and Penalty, REMARKS

Handwritten entries for property owners and descriptions: J.R. Ethridge, Sam C. Green, Fred R. Green + Doris Green Miller, State of Minnesota, Sam C. Green, Fred R. Green + Doris Green Miller, M. J. Toman, Walter G. + Dorothy Thompson, Anna L. McCutcheon + D. J. Plasco, Len L. Smythe, State of Minnesota, State of Minnesota (Cont. to J. L. McLaurie), Walter G. Thompson, J. L. McLaurie, State of Minnesota, State of Minnesota, State of Minnesota, State of Minnesota, Harold V. + Eleanor J. Prior

Handwritten tax data and remarks: 1 108 16 97 46 1738 1st Half Paid NOV 9 1944 4706 869 869; 2 100 15 66 42 1608 2nd Half Paid MAY 26 1944 7968 3264; 3 105 16 12 44 1656 3rd Half Paid JUL 6 1944; 6 69 10 80 28 1108 4th Half Paid JUL 6 1944 7968 1108; 8 75 11 44 30 1174 8th Half Paid JUL 7 1944 7993 1174; 9 76 11 99 54 Abatement #2180 1199 1190 24; 10 65 10 18 78 1018 10th Half Paid JUL 7 1944 8508 1018; 12 43 6 74 18 692 12th Half Paid JUL 7 1944 7993 218 474; 13 184 28 82 78 2960 13th Half Paid NOV 4 1944 8114 1480 1480; 20 79 6 10 16 656 20th Half Paid JUL 8 1944 7963 626 8.52 abated; 79 826 14266 356 14622 911 8.52 abated



Platted Machinery at 33%
 C. K. Chuman
 2660 Calif. St. Omaha, Neb.
 C. K. Chuman
 2660 Calif. St. Omaha, Neb.

Starting at a point approx. 1200 feet N. of the M. C. for the S.W. corner of Govt. lot 2 sec. 30 T. 44 N. R. 28 W. corner N. 76 3/4° E. (Mag. Br.) a distance of approx. 580 ft. to the shore of Mule Lake, thence S. westerly along said shore, a distance of 250 ft., thence westerly approx. 480 ft. to west Sec. line of said lot 2, thence 200 feet north on said line to point of beginning.

3 ac.

True value \$39

Sketch attached

1	20 1/4	
2		
3		
5		
4		
11		
12		
13		
14		
15		
16		
17		
18		
19		
20		

State of Minnesota	11	NE 1/4 of SW 1/4
State of Minnesota (Cont. to J. L. McLaury)	12	NW 1/4 of SW 1/4
J. L. McLaury	13	SW 1/4 of SW 1/4 - 6
State of Minnesota	14	SE 1/4 of SW 1/4 - 7
State of Minnesota	15	
State of Minnesota	16	NE 1/4 of SE 1/4
State of Minnesota	17	NW 1/4 of SE 1/4
State of Minnesota	18	SW 1/4 of SE 1/4 - 8
State of Minnesota	19	SE 1/4 of SE 1/4
Harold V. & Eleanor J. Prior	20	N. 9 acs. of Lot 4

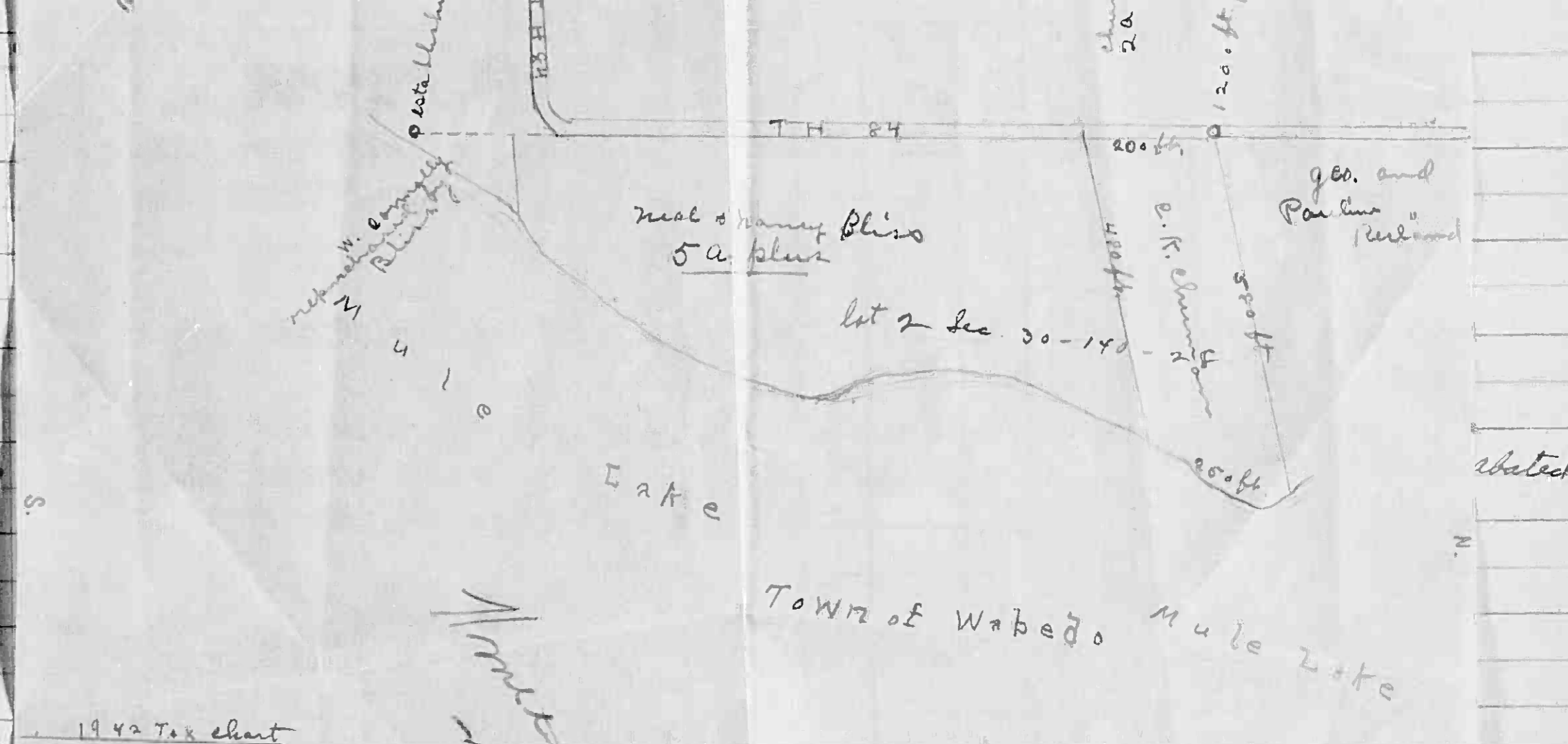
20 per Cent, Class 3B; Remainder at 33 1/3 Per Cent, Class 3.
 C. K. Chuman
 2660 Calif. St. Omaha, Neb.

Starting at a point approx. 1200 feet N. of the M. C. for the S.W. cor. of Govt. lot 2 sec. 30 T. 44 N. R. 28 W. corner N. 76 3/4° E. (Mag. Br.) a distance of approx. 580 feet to the shore of Mule Lake, thence S. westerly approx. along said shore a distance of 250 ft., thence westerly approx. 480 feet to west Sec. line of said lot 2, thence 200 ft. N. on said line to point of beginning.

3 ac.

1	108		
2	100		
3	103		
4			
5			
6	69		
7			
8	73		
9	76		
10	77		
11	65		
12	43	674	18
13	184	2882	78
14			
15			
16			
17			
18			
19			
20	39	610	16
11	25		
11	846	14266	356
11	911		

Cass County, Minnesota, for Taxes for the Year 1943.
 T. OF WOODROW
 Mule Lake
 Geo. and Pauline Richard
 lot 2 sec. 30-140-28



1942 Tax chart

Richard	\$32.08
Bliss	14.30
reimbursed by Chuman	130
Canonically	12.72

Assessment Roll and Tax List of Unplatted Real Property in the of Cass County, Minnesota, for Taxes for the Year 1943.

Cass County, Minnesota, for Taxes for the Year 1943.

Table with columns for Description of Property, Assessor's Valuation, Equalized Values, Valuations by School Districts, Rate and Tax, State Tax, Total General Tax, Special Taxes, Total Taxes, Paid, When Paid, Number of Receipt, March Settlement, June Settlement, Penalty, November Settlement, Collections to First Monday, Delinquent on First Monday, Total Delinquent Tax, and Remarks.

Assessment Roll and Tax List of Unplatted Real Property in the of Cass County, Minnesota, for Taxes for the Year 1943.

Cass County, Minnesota, for Taxes for the Year 1943.

Table with columns: IN WHOSE NAME ASSESSED, TO WHOM TRANSFERRED, DESCRIPTION OF PROPERTY, ASSESSOR'S VALUATION, EQUALIZED VALUES, VALUATIONS BY SCHOOL DISTRICTS AS EQUALIZED BY DEPARTMENT OF TAXATION, SPECIAL TAXES, TOTAL TAXES, PAID, WHEN PAID, Number of Receipt, March Settlement 1944, June Settlement 1944, Penalty, November Settlement 1944, Penalty, Collections to First Monday in January 1945, Delinquent on First Monday in January 1945, Total Delinquent Tax and Penalty, REMARKS.

George Peterson Carl R. Johnson Hugh V. Mercer

David A. Johnson

August Gordon

George Peterson C. R. Johnson

Ole Mable Pernard, Alvora Sweeney, Willette A. Bernier & Mable

Carl R. Johnson

Pernard, Alvora Sweeney, Willette A. Bernier & Mable

C. R. Johnson

SOLD FOR TAXES

Abatement # 2389

Abatement # 2389

9.86 abated

6.86 abated

16.72 over 16.72 abated

12.14

Assessment Roll and Tax List of Unplatted Real Property in the of Cass County, Minnesota, for Taxes for the Year 1943.

Form #CD 1-14-43 COMPART, MINNEAPOLIS

Table with columns: IN WHOSE NAME ASSESSED, TO WHOM TRANSFERRED, DESCRIPTION OF PROPERTY, ASSESSOR'S VALUATION, EQUALIZED VALUES, VALUATIONS BY SCHOOL DISTRICTS AS EQUALIZED BY DEPARTMENT OF TAXATION, Rate and Tax Loss Homestead Exemption, State Tax on Non-Homestead, TOTAL GENERAL TAX, SPECIAL TAXES, TOTAL TAXES, PAID, WHEN PAID, Number of Receipt, March Settlement 1944, June Settlement 1944, Penalty, November Settlement 1944, Penalty, Collectors to First Monday in January 1945, Penalty, Delinquent on First Monday in January 1945, Total Delinquent Tax and Penalty, REMARKS.

State of Minnesota 1 NE 1/4 of NE 1/4 L 11 25 140.28 1/4m
State of Minnesota 2 NW 1/4 of NE 1/4
State of Minnesota 3 SW 1/4 of NE 1/4
State of Minnesota 4 SE 1/4 of NE 1/4
State of Minnesota 6 NE 1/4 of NW 1/4
State of Minnesota 7 NW 1/4 of NW 1/4
State of Minnesota 8 SW 1/4 of NW 1/4
State of Minnesota 9 SE 1/4 of NW 1/4
State of Minnesota 11 NE 1/4 of SW 1/4
State of Minnesota (Cont to Marion Lott) Minn. Nephew Lott 12 NW 1/4 of SW 1/4 40
State of Minnesota (Cont to Marion Lott) Minn. Nephew Lott 13 SW 1/4 of SW 1/4 40
State of Minnesota 14 SE 1/4 of SW 1/4
State of Minnesota 16 NE 1/4 of SE 1/4 " 2
J.E. Allop 17 NW 1/4 of SE 1/4 40
18 SW 1/4 of SE 1/4 40
19 SE 1/4 of SE 1/4
20 160

7th Half Paid SEP 23 1944
2nd Half Paid JUN 2 1944
2nd Half Paid SEP 23 1944

532 x 585
1238 x 1362

1770

Assessment Roll and Tax List of Unplatted Real Property in the of Cass County, Minnesota, for Taxes for the Year 1943.

Table with columns: IN WHOSE NAME ASSESSED, TO WHOM TRANSFERRED, DESCRIPTION OF PROPERTY, ASSESSOR'S VALUATION, EQUALIZED VALUES, VALUATIONS BY SCHOOL DISTRICTS AS EQUALIZED BY DEPARTMENT OF TAXATION, Rate and Tax Less Homestead Exemption, State Tax on Non-Homestead, TOTAL GENERAL TAX, SPECIAL TAXES, TOTAL TAXES, PAID, WHEN PAID, Number of Receipt, March Settlement 1944, June Settlement 1944, Penalty, November Settlement 1944, Penalty, Collections to First Monday in January 1945, Delinquent on First Monday in January 1945, Total Delinquent Tax and Penalty, REMARKS.

Assessment Roll and Tax List of Unplatted Real Property in the of Cass County, Minnesota, for Taxes for the Year 1943.

Form 4 CD UNPLATTED REAL PROPERTY, MINNESOTA

Table with columns: IN WHOSE NAME ASSESSED, TO WHOM TRANSFERRED, DESCRIPTION OF PROPERTY, ASSESSOR'S VALUATION, EQUALIZED VALUES, VALUATIONS BY SCHOOL DISTRICTS AS EQUALIZED BY DEPARTMENT OF TAXATION, Rate and Tax Less Homestead Exemption, State Tax on Non-Homestead, TOTAL GENERAL TAX, SPECIAL TAXES, TOTAL TAXES, PAID, WHEN PAID, Number of Receipt, March Settlement 1944, June Settlement 1944, Penalty, November Settlement 1944, Penalty, Collections to First Monday in January 1945, Penalty, Delinquent on First Monday in January 1945, Total Delinquent Tax and Penalty, REMARKS.

Earl H. Crommitt

H. R. Walker

Victor J. + Agnes M. Miller

Theysenhausner et al

R. G. Saxton

State of Minnesota (Cont. to G. R. Mc Clintock)

Emil Mosk

J. J. Allen + Harry H. Hill

60 ft less on plat

7.08 abated

7.08 abated

11802

Assessment Roll and Tax List of Unplatted Real Property in the of Cass County, Minnesota, for Taxes for the Year 1943.

Form 4 CD

IN WHOSE NAME ASSESSED

TO WHOM TRANSFERRED

DESCRIPTION OF PROPERTY

Sec. or Range, Town or Block, Number of Acres of Land

No. School District

Indicate Home-Stead

ASSESSOR'S VALUATION

True and Full Value of Land, Excludes of Structures and Improvements

STRUCTURES & IMPROVEMENTS, True and Full Value of Building and Other Structures

Total True and Full Value of Land Including all Structures, Improvements and Machinery

Assessed Value of Homesteads up to \$1,000 at 20 per cent Class 3B

Assessed Value of Remainder at 33 1/2 per cent Class 3

Total Assessed Value of Land Including all Structures, Improvements and Machinery

Total Assessed Value as Equalized by the Board of Review

Total Assessed Value as Equalized by the County Board

Total Assessed Value as Equalized by the Department of Taxation

SOLD FOR TAXES

VALUATIONS BY SCHOOL DISTRICTS AS EQUALIZED BY DEPARTMENT OF TAXATION

District No., Rate, District No., Rate, District No., Rate, District No., Rate

Rate and Tax Less Homestead Exemption

State Tax on Non-Homestead

TOTAL GENERAL TAX

SPECIAL TAXES

TOTAL TAXES

PAID

WHEN PAID

Number of Receipt

March Settlement 1944

June Settlement 1944

Penalty

November Settlement 1944

Penalty

Collections to First Monday in January 1945

Penalty

Delinquent on First Monday in January 1945

Total Delinquent Tax and Penalty

REMARKS

State of Minnesota Wm. C. + Louise O. Lampman NE 1/4 of NE 1/4 28 140 28 Un.

State of Minnesota 2 NW 1/4 of NE 1/4

G. A. Lincoln 3 SW 1/4 of NE 1/4 Lot 4 52 50

Geo. + Stella Lincoln 4 SE 1/4 of NE 1/4 3 29 25

B. E. Wideman B. E. Wideman NE 1/4 of NW 1/4 1 37

7 NW 1/4 of NW 1/4 2 39 50

8 SW 1/4 of NW 1/4 40

9 SE 1/4 of NW 1/4 40

L. J. Kolberg G. A. Lincoln NE 1/4 of SW 1/4 5 40 50

State of Minnesota 12 NW 1/4 of SW 1/4

Reverin E. + Fred W. Gray 13 SW 1/4 of SW 1/4 6 34 50

14 SE 1/4 of SW 1/4

Geo. + Stella Lincoln 16 NE 1/4 of SE 1/4 7 41 25

17 NW 1/4 of SE 1/4

18 SW 1/4 of SE 1/4

19 SE 1/4 of SE 1/4

20

354 50

SOLD FOR TAXES Abate #2094

SOLD FOR TAXES " 2094

SOLD FOR TAXES " 2094

SOLD FOR TAXES " 2094

SOLD-FOR-TAXES

81

1050

1131

179 12 444

181 56

2494 abated

6.90 abated

7.72 "

5.16 "

5.16 "

2968 ✓

1268 ✓

2268 ✓

Assessment Roll and Tax List of Unplatted Real Property in the of Cass County, Minnesota, for Taxes for the Year 1943.

Unplatted Real Estate Assessed at 33 1/2 Per Cent of True and Full Value; Attached Machinery at 33 1/2 Per Cent of True and Full Value. Homeleads, up to True and Full Value of \$1000, Assessable at 20 per Cent, Class 3B; Remainder at 33 1/2 Per Cent, Class 3.

Form 4 CD

Table with columns for IN WHOSE NAME ASSESSED, TO WHOM TRANSFERRED, DESCRIPTION OF PROPERTY, ASSESSOR'S VALUATION, EQUALIZED VALUES, VALUATIONS BY SCHOOL DISTRICTS AS EQUALIZED BY DEPARTMENT OF TAXATION, Rate and Tax Less Homestead Exemption, State Tax on Non-Homestead, TOTAL GENERAL TAX, SPECIAL TAXES, PAID, WHEN PAID, Number of Receipt, March Settlement 1944, June Settlement 1944, Penalty, November Settlement 1944, Collections to First Monday in January 1945, Delinquent on First Monday in January 1945, Total Delinquent Tax and Penalty, REMARKS. Includes handwritten entries for R.E. Hall, Heyrhauser et al, and Stan Hatland.

Assessment Roll and Tax List of Unplatted Real Property in Unplatted Real Estate Assessed at 33 1/2 Per Cent of True and Full Value; Attached Machinery at 33 1/2 Per Cent of True and Full Value.

Table with columns: IN WHOSE NAME ASSESSED, TO WHOM TRANSFERRED, DESCRIPTION OF PROPERTY (SUBDIVISION, Sec. or Lot, Town or Block, Range, Number of Acres of Land), No. School District, Ind. Ho. st.

Entire court description on 1944 tax list

Chuman description as shown in register of deeds office;

Beginning at a point approximately 1320 feet south of the NW corner of said Lot 2 thence in an easterly direction to the meander line of Mule Lake, thence in a southerly direction 250 feet along the meander line of said Mule Lake thence returning in a westerly direction to the west section line of Lot 2 thence north on the section line 200 feet to point of beginning.

Begin 1320' S of N.W. Cor. Lot 2, E. to Mule Lake, S 250' along Mule Lake, W. to W. Sec. line of Lot 2, N. 200' to beg.

Handwritten notes: 5 1/10 acre, plus other 1/2 acre, open 3 ac.

Cass County, Minnesota, for Taxes for the Year 1943.

Table with columns: VALIDATIONS BY SCHOOL DISTRICTS AS EQUALIZED BY DEPARTMENT OF TAXATION (District No., Rate, etc.), SPECIAL TAXES, TOTAL TAXES, PAID, WHEN PAID, Number of Receipt, March Settlement, June Settlement, November Settlement, Collections to First Monday in January, Delinquent on First Monday in January, Total Delinquent Tax and Penalty, REMARKS.

Form 4 CD

Table with columns: IN WHOSE NAME ASSESSED, TO WHOM TRANSFERRED, SUBDIVISION, ASSESSOR'S VALUATION, EQUALIZED VALUES, VALUATIONS BY SCHOOL DISTRICTS AS EQUALIZED BY DEPARTMENT OF TAXATION, SOLID FOR TAXES, SPECIAL TAXES, TOTAL GENERAL TAX, PAID, WHEN PAID, Number of Receipt, March Settlement 1944, June Settlement 1944, November Settlement 1944, Penalty, Collections to First Monday in January 1945, Delinquent on First Monday in January 1945, Total Delinquent Tax and Penalty, REMARKS.

B. J. Hinkle
Arthur J. Nelson
1 N E 1/4 of N E 1/4 31 140 28 40
2 N W 1/4 of N E 1/4 40
3 S W 1/4 of N E 1/4 40
4 S E 1/4 of N E 1/4 40

Arthur J. Nelson
Arthur J. + Valborg Nelson
Emil M. Mork
B. J. Hinkle
Arthur J. Nelson
6 N E 1/4 of N W 1/4 1/2 of Lot 1 12
7 N W 1/4 of N W 1/4 1/2 of " 1 8 75
8 S W 1/4 of N W 1/4 " 2 22 65
9 S E 1/4 of N W 1/4 " 3 39 50

Emil Mork
Arthur J. Nelson
11 N E 1/4 of S W 1/4 40
12 N W 1/4 of S W 1/4 " 4 24 25
13 S W 1/4 of S W 1/4 " 5 34
14 S E 1/4 of S W 1/4 40

B. J. Hinkle
Arthur J. Nelson
16 N E 1/4 of S E 1/4 40
17 N W 1/4 of S E 1/4 40
18 S W 1/4 of S E 1/4 40
19 S E 1/4 of S E 1/4 40

Arthur R. Thompson
Arthur R. Thompson
20
541 15

90
1167
1287
19674 497
20166

Madison Pass
Little Boy Lake
Iowa Point

Assessment Roll and Tax List of Unplatted Real Property in the of Cass County, Minnesota, for Taxes for the Year 1943.

Table with columns: IN WHOSE NAME ASSESSED, TO WHOM TRANSFERRED, DESCRIPTION OF PROPERTY, ASSESSOR'S VALUATION, EQUALIZED VALUES, VALUATIONS BY SCHOOL DISTRICTS AS EQUALIZED BY DEPARTMENT OF TAXATION, Rate and Tax Less Homestead Exemption, State Tax on Non-Homestead, TOTAL GENERAL TAX, SPECIAL TAXES, TOTAL TAXES, PAID, WHEN PAID, Number of Receipt, March Settlement 1944, June Settlement 1944, Penalty, November Settlement 1944, Collections to First Monday in January 1945, Delinquent on First Monday in January 1945, Total Delinquent Tax and Penalty, REMARKS.

O.C. M.J., D.M., + M.A. Wilson

Arthur A. Nellie, + Everett Stanfield

Andrew Grossinger + Anna Pollock

Raymond C. + Sola E. Binkley

Chas. F. Larson + O.C. Wilson

Arthur A. Nellie, + Everett Stanfield

State of Minnesota

State of Minnesota

Arthur A. Nellie, + Everett Stanfield

Roscoe Marden

State of Minnesota

State of Minnesota

Joe F. + Blanche P. Roscoe

Harold C. + Fern Atwood

"

"

"

"

"

"

Redeem

Little Boy Lake

Springs

Redeem

Table with columns: IN WHOSE NAME ASSESSED, TO WHOM TRANSFERRED, DESCRIPTION OF PROPERTY, ASSESSOR'S VALUATION, EQUALIZED VALUES, VALUATIONS BY SCHOOL DISTRICTS AS EQUALIZED BY DEPARTMENT OF TAXATION, Rate and Tax Less Homestead Exemption, State Tax on Non-Homestead, TOTAL GENERAL TAX, SPECIAL TAXES, TOTAL TAXES, PAID, WHEN PAID, Number of Receipt, March Settlement 1944, June Settlement 1944, Penalty, November Settlement 1944, Collections to First Monday in January 1945, Delinquent on First Monday in January 1945, Total Delinquent Tax and Penalty, REMARKS.

Harry, Minnie B. + Jane E. Engelhart

C. H. Brown
Margaret McCollister May Dummell

George Ruscoe
James + Minnie Lucina
George Ruscoe

Um. Dave Babcock + Eva Babcock Hemingway
Harrison M. Kline
Harry E. Zaske
Ralph F. Felton
Gertie Whitted

Cancelled +
duplication
Lucina Ad.
4.38 Abated
3.12
3040 Cane.
31.40 Cane.
7.50 abated

House Add'n
Little Boy Lake
Springs
Cant

Assessment Roll and Tax List of Unplatted Real Property in the _____ of _____

Form 4 CD June 1942

IN WHOSE NAME ASSESSED	TO WHOM TRANSFERRED	DESCRIPTION OF PROPERTY					No. School District	Indicate Home-stead	ASSESSOR'S VALUATION					EQUALIZED VALUES			SOLD FOR TAXES	VALUATIONS BY SCHOOL DISTRICTS AS EQUALIZED BY DEPARTMENT OF TAXATION				Rate and Tax Less Homestead Exemption	State Tax on Non-Homestead	TOTAL GENERAL TAX	SPECIAL TAXES					TOTAL TAXES	PAID	WHEN PAID	Number of Receipt	March Settlement 1944	June Settlement 1944	Penalty	November Settlement 1944	Penalty	Collections to First Monday in January 1945	Penalty	Delinquent on First Monday in January 1945	Total Delinquent Tax and Penalty	REMARKS									
		SUBDIVISION	Sec. or Lot	Town or Block	Number of Acres of Land	Acres			Value of Land	Value of Structures	Value of Machinery	Value of Improvements	Total	Rate	Value	Rate		Value	Rate	Value	District No.				Rate	Value	District No.	Rate	Value															District No.	Rate	Value	District No.	Rate	Value	District No.	Rate	Value
Otto Haack		N E 1/4 of N E 1/4	Lot 1	34 1/2	28	Un										1	131	2052	56						2108	1	Paid in Full	JUN 1 4 1944	5140	3490																						
		N W 1/4 of N E 1/4	" 2		39 95											2	86	1346	36						1382	2	Paid in Full	JUN 1 4 1944																								
Wash. M. Bull + Carter P. Bull, Jr.		S W 1/4 of N E 1/4			40											3	86	1346	36						1382	3																1382										
State of Minnesota		S E 1/4 of N E 1/4														4																																				
Frank P. Hogon + Mary S. Rochester	State of Minnesota	N E 1/4 of N W 1/4			40											6	86	1346	36						1382	6	Pay to State																		1382	Case						
Ralph C. + Lois Z. Pelton		N W 1/4 of N W 1/4	" 3		33 50											7	28	438	12						450	7	PAID IN FULL	MAY 1 6 1944	4390	450																						
Harry E. Zucke		S W 1/4 of N W 1/4	" 4		38											8	43	674	18						692	8																		692								
Wash. M. Bull + Carter P. Bull, Jr.		S E 1/4 of N W 1/4			40											9	43	674	18						692	9																			692							
State of Minnesota		N E 1/4 of S W 1/4														11																																				
State of Minnesota		N W 1/4 of S W 1/4														12																																				
State of Minnesota		S W 1/4 of S W 1/4	less 1 ac. school													13																																				
State of Minnesota		S E 1/4 of S W 1/4														14																																				
State of Minnesota		N E 1/4 of S E 1/4														16																																				
State of Minnesota		N W 1/4 of S E 1/4														17																																				
State of Minnesota		S W 1/4 of S E 1/4														18																																				
State of Minnesota		S E 1/4 of S E 1/4														19																																				
																20																																				
					25945												171	503	89896	212						8088																								1382	Case	

St. Croix Falls
Little Boy Lake
St. Croix Falls
Little Boy Lake
St. Croix Falls
Little Boy Lake

Assessment Roll and Tax List of Unplatted Real Property in the of Cass County, Minnesota, for Taxes for the Year 1943.

Cass County, Minnesota, for Taxes for the Year 1943.

Form 4 CD

Table with columns: IN WHOSE NAME ASSESSED, TO WHOM TRANSFERRED, DESCRIPTION OF PROPERTY, ASSESSOR'S VALUATION, EQUALIZED VALUES, VALUATIONS BY SCHOOL DISTRICTS AS EQUALIZED BY DEPARTMENT OF TAXATION, SPECIAL TAXES, TOTAL TAXES, PAID, WHEN PAID, Number of Receipt, March Settlement 1944, June Settlement 1944, Penalty, November Settlement 1944, Penalty, Collections to First Monday in January 1945, Penalty, Delinquent on First Monday in January 1945, Total Delinquent Tax and Penalty, REMARKS.

Ruth C. Stephens

Transferred to State

Case

160

77 344

5384 144

5528

55.28 Case

Assessment Roll and Tax List of Platted Real Property in the _____ of _____

Cass County, Minnesota, for Taxes for the Year 1943.

Platted Real Estate Assessed at 40 Per Cent of True and Full Value; Attached Machinery at 33 1/2 Per Cent of True and Full Value, Homesteads, up to True and Full Value of \$4000, Assessable at 25 per Cent, Class 3C; Remainder at 40 Per Cent, Class 4.

Form 5 C MILLER-GAY COMPANY, MINNEAPOLIS

Webbed Pass

Clubhouse Add'n Little Boy Lake

Webbed Pass

Webbed Pass

Webbed Pass

IN WHOSE NAME ASSESSED

TO WHOM TRANSFERRED

SUBDIVISION

Lot Block

No. School District

Indicate Home-Steal

ASSESSOR'S VALUATION: True and Full Value of Land, Structures & Improvements, True and Full Value of Machinery, Total True and Full Value of Land including all Structures, Improvements and Machinery, Assessed Value of Homesteads, Assessed Value of Remainder at 40 per cent Class 4, Total Assessed Value of Land including all Structures, Improvements and Machinery, Total Assessed Value as Equalized by the Board of Review, Total Assessed Value as Equalized by the County Board, Total Assessed Value as Equalized by the Department of Taxation

EQUALIZED VALUES

SOLD FOR TAXES

VALUATIONS BY SCHOOL DISTRICTS AS EQUALIZED BY DEPARTMENT OF TAXATION: District No., District No., District No., District No., Rate, Rate, Rate, Rate

Rate and Tax Less Homestead Exemption, State Tax on Non-Homestead, TOTAL GENERAL TAX

SPECIAL TAXES: PAID, WHEN PAID, Number of Receipt, March Settlement 1944, June Settlement 1944, November Settlement 1944, Penalty, Collections to First Monday in January 1945, Delinquent on First Monday in January 1945, Total Delinquent Tax and Penalty

Table with columns for Assessed Name, To Whom Transferred, Subdivision, Lot, Block, and No. School District. Includes handwritten entries like 'Clubhouse Add'n - Little Boy Lake' and 'Sublot "A" - Sec. 22-146-28'.

Table with columns for Assessor's Valuation and Equalized Values, including True and Full Value of Land, Structures & Improvements, and Total Assessed Value.

Table with columns for Sold for Taxes, indicating the status of each property.

Table with columns for Valuations by School Districts as Equalized by Department of Taxation, including District No. and Rate.

Table with columns for Rate and Tax Less Homestead Exemption, State Tax on Non-Homestead, and Total General Tax.

Table with columns for Special Taxes, including PAID, WHEN PAID, Number of Receipt, and various settlement and penalty amounts.

Table with columns for Delinquent on First Monday in January 1945, Total Delinquent Tax and Penalty, and Remarks.

Hander's Add'n

Webbed Pass

Webbed Pass

Webbed Pass

Assessment Roll and Tax List of Platted Real Property in the _____ of _____
 Platted Real Estate Assessed at 40 Per Cent of True and Full Value; Attached Machinery at 33 1/3 Per Cent of True and Full Value, Homesteads, up to True and Full Value of \$4000, Assessable at 25 per Cent, Class 3C; Remainder at 40 Per Cent, Class 4.

Wabedo Pass
Clubhouse Add'n
Little Boy Lake

IN WHOSE NAME ASSESSED	TO WHOM TRANSFERRED	SUBDIVISION	Lot	Block	No. School District	ASSESSOR'S VALUATION						SOLD FOR TAXES	VALUATIONS BY SCHOOL DISTRICTS AS EQUALIZED BY DEPARTMENT OF TAXATION				Rate and Tax Less Homestead Exemption Mills	State Tax on Non-Homestead Mills	TOTAL GENERAL TAX	SPECIAL TAXES						TOTAL TAXES	PAID	WHEN PAID Month Day Year	Number of Receipts	March Settlement 1944	June Settlement 1944	November Settlement 1944	Penalty	Collections to First Monday in January 1945	Penalty	Delinquent on First Monday in January 1945	Total Delinquent Tax and Penalty	REMARKS								
						True and Full Value of Lands Exclusive of Structures and Improvements Dollars	STRUCTURES & IMPROVEMENTS True and Full Value of Buildings and Other Structures Dollars	True and Full Value of Machinery Permanently Attached to Real Estate Dollars	Total True and Full Value of Lands Including all Structures, Improvements and Machinery Dollars	Assessed Value of Homesteads up to \$4,000 at 25 per cent Class 3C Dollars	Assessed Value of Remainder at 40 per cent Class 4 Dollars		Total Assessed Value of Lands including all Structures, Improvements and Machinery Dollars	Total Assessed Value as Equalized by the Board of Review Dollars	Total Assessed Value as Equalized by the County Board Dollars	Total Assessed Value as Equalized by the Department of Taxation Dollars				District No. Rate Dollars Mills	District No. Rate Dollars Mills	District No. Rate Dollars Mills	District No. Rate Dollars Mills	\$ cts.	\$ cts.														\$ cts.	\$ cts.	\$ cts.	\$ cts.	\$ cts.	\$ cts.	\$ cts.	\$ cts.
Lewis M. Lindens, Clarence Johnson, & Ros J Davis		Clubhouse Add'n - Little Boy Lake	10	2	160							1	8			142	04	146																								146				
"	"	"	11									2	8			142	04	146																									146			
"	"	"	12									3	8			142	04	146																									146			
"	"	"	13									4	8			142	04	146																										146		
"	"	"	14									5	8			142	04	146																										146		
"	"	"	15									6	8			142	04	146																										146		
"	"	"	16									7	8			142	04	146																										146		
"	"	"	17									8	8			142	04	146																										146		
"	"	"	18									9	8			142	04	146																										146		
"	"	"	19									10	8			142	04	146																										146		
"	"	"	20									11	8			142	04	146																										146		
"	"	"	21									12	8			142	04	146																											146	
"	"	"	22									13	8			142	04	146																											146	
"	"	"	23									14	8			142	04	146																											146	
"	"	"	1 3									15	8			142	04	146																											146	
"	"	"	2									16	8			142	04	146																											146	
"	"	"	3									17	8			142	04	146																											146	
"	"	"	4									18	8			142	04	146																											146	
"	"	"	5									19	8			142	04	146																											146	
"	"	"	6									20	8			142	04	146																											146	
			7									7A	160			2840	80	2920																											2920	

Wabedo Pass
Clubhouse Add'n
Little Boy Lake

Assessment Roll and Tax List of Platted Real Property in the _____ **of** _____
 Platted Real Estate Assessed at 40 Per Cent of True and Full Value; Attached Machinery at 33 1/2 Per Cent of True and Full Value, Homesteads, up to True and Full Value of \$4000, Assessable at 25 per Cent, Class 3C; Remainder at 40 Per Cent, Class 4.

Wabedo Pass
 Crookhouse Add'n
 Little Bay Lake
 Wabedo Springs
 Iowa Point

IN WHOSE NAME ASSESSED	TO WHOM TRANSFERRED	DESCRIPTION OF PROPERTY		No. School District	Indicate Homestead	ASSESSOR'S VALUATION					EQUALIZED VALUES			SOLD FOR TAXES	VALUATIONS BY SCHOOL DISTRICTS AS EQUALIZED BY DEPARTMENT OF TAXATION				Rate and Tax Less Homestead Exemption	State Tax on Non-Homestead	TOTAL GENERAL TAX	SPECIAL TAXES					TOTAL TAXES	PAID	WHEN PAID	Number of Receipt	March Settlement 1944	June Settlement 1944	November Settlement 1944	Penalty	Collections to First Monday in January 1945	Penalty	Delinquent on First Monday in January 1945	Total Delinquent Tax and Penalty	REMARKS										
		Subdivision	Lot			Block	Total True and Full Value of Lands Including all Structures, Improvements and Machinery	Assessed Value of Homesteads up to \$4,000 at 25 per cent Class 3C	Assessed Value of Remainder at 40 per cent Class 4	Total Assessed Value of Lands Including all Structures, Improvements and Machinery	Total Assessed Value as Equalized by the Board of Review	Total Assessed Value as Equalized by the County Board	Total Assessed Value as Equalized by the Department of Taxation		District No.	District No.	District No.	District No.				Rate	Rate	Rate	Rate																								
															Dollars	Dollars	Dollars	Dollars				Dollars	Dollars	Dollars	Dollars	Dollars														Mills	Mills	Mills	Mills	%	cts.	%	cts.	%	cts.
		Zowa Point																																															
Harry + Minnie B. Engelhart			1		Un.																																												
"			2																																														
"			3																																														
"			4																																														
"			5																																														
"			6																																														
"			7																																														
"			8																																														
"			9																																														
"			10																																														
"			11																																														
"			12																																														
"			13																																														
"			14																																														
"			15																																														
"			16																																														
"			17																																														
"			18																																														
"			19																																														
"			20																																														

1
 2
 3
 4
 5 600 10596 252 10848
 6
 7
 8
 9
 10
 11
 12
 13
 14
 15
 16
 17
 18
 19
 20
 21 600 10596 252 10848

5 PAID IN FULL MAR 20 1944 290 10848 ✓

Assessment Roll and Tax List of Platted Real Property in the _____ of _____, Cass County, Minnesota, for Taxes for the Year 1943.

Form 5 C. WILSON-BATES COMPANY, MINNEAPOLIS

Table with columns: IN WHOSE NAME ASSESSED, TO WHOM TRANSFERRED, DESCRIPTION OF PROPERTY, ASSESSOR'S VALUATION, EQUALIZED VALUES, VALUATIONS BY SCHOOL DISTRICTS AS EQUALIZED BY DEPARTMENT OF TAXATION, Rate and Tax Less Homestead Exemption, State Tax on Non-Homestead, TOTAL GENERAL TAX, SPECIAL TAXES, TOTAL TAXES, PAID, WHEN PAID, Number of Receipt, March Settlement 1944, June Settlement 1944, Penalty, November Settlement 1944, Collections to First Monday in January 1945, Penalty, Delinquent on First Monday in January 1945, Total Delinquent Tax and Penalty, REMARKS.

Wabedo Pass

Sturgeon Lake

Little Boy Lake

Mander's Add'n

Wabedo Springs

Joseph P. Berres
Mrs Charles Caswell
R.A. Mauders Joseph Berres
" "
" "
R.A. Mauders

Manders Addition
(Part of Lot 3 - Sec. 3-140-18)

Grand Total Platted

212