

ASSESSMENT & TAX LIST
Unorganized No. 5
1951

Assessment of

Form 314

NAME OF OWNER

1

2

3

4

5

6

7

8

Treasurer's Office, Cass County, Minnesota

RECEIVED this, the first Monday (being the 7th day) of January, A. D. 1952, of L. C. Peterson, Auditor of said County, Minnesota, the Tax List of all Taxable Real and Personal Property in the Town of Unorg. # 5 in said County for the year A. D. 1951, as specified above and amounting to Dollars

Paul D. Jewell, County Treasurer, F.M.P.

Auditor's Office, Cass County, Minnesota

I, Auditor of said County, and State of Minnesota, do hereby certify that the following is a correct list of the Taxes levied on the Real and Personal Property in the of for the year 1951. WITNESS my hand and official seal, the day of 1952.

(SEAL) County Auditor.

Jan 5, 1953

Office of County Treasurer, Cass County, Minnesota

To L. C. Peterson, County Auditor:

Sir:—I herewith return to you the Tax List for the Town of Unorg. # 4 in said County for the year 1951, heretofore received from you. I certify that I have compared the same with the duplicate receipts in your office, and have written opposite the amount of each tax so received the words "First Quarter Paid", "Second Quarter Paid", "Third Quarter Paid" or "Paid in full" as the case may be, and the number of my receipt given in discharge of said tax, and each tract or lot of real property against which the taxes remain unpaid is delinquent for said year.

Yours respectfully, Paul D. Jewell, County Treasurer, F.M.P.

Auditor's Office, Cass County, Minnesota

I hereby certify that on the first Monday in January 1953, I received of County Treasurer, the Tax List of the of in said County for the year 1951; that I have compared the said list with the Statements received for by said Treasurer, which are on file in my office, and that each tract or lot of real property therein against which the taxes, or any part thereof, remains unpaid are delinquent for said year.

(SEAL) County Auditor.

Assessment of

COLLECTIONS OF TAXES OF 195

OF

CASS COUNTY, MINNESOTA

Form 314

FUNDS	MARCH SETTLEMENT 1952	JUNE SETTLEMENT 1952	NOV. SETTLEMENT 1952	Amount Collected from Nov. 1952 to First Monday in Jan. 1953	REDUCTIONS	Total Reductions and Collected	BALANCE UNCOLLECTED	ADDITIONS	Total Uncollected to First Monday in January, 1953
State - Non-Homestead,	34708	5872	3194	3111					
State - Homestead,	61312	12556	7271	506					
County Revenue,	340161	69783	40411	2812					
County Road and Bridge,	174086	36675	21238	1478					
County Welfare,	555912	113844	65926	4588					
County Bond and Interest,	215152	44060	25515	1776					
Town Revenue,									
Town Road and Bridge,	124365	25468	14749	1026					
Town Drag,									
Town State Loan,									
School Local 1 Mill,	12437	2547	1475	102					
School Special,	496683	91653	57573	4020					
School State Loan, <i>Trans</i>	37309	7640	4424	308					
Deficiency	559644	114607	66368	4619					
Tuition									
Transportation									
<i>Co.</i>	124366	25468	14749	1027					
<i>B+I</i>	62193	12734	7374	513					
	2803918	562877	330267	25886					

	SCHOOL DISTRICT NO.	LOCAL 1 MILL	SPECIAL	STATE LOAN- <i>Trans</i>	Deficiency	<i>Co.</i>	<i>B+I</i>	TOTALS
MARCH SETTLEMENT	<i>Un A</i> <i>Un Na</i>	39 12398	776 475707	116 37193	1746 557898	388 123918	174 61787	3259 1289363
	Totals	12437	496683	37309	559644	124366	62183	
JUNE SETTLEMENT	<i>Un A</i> <i>Un Na</i>	511 2036	10223 81950	1533 6107	23001 91606	5111 20357	2556 15178	1292622 42935 211714
	Totals	2547	91653	7640	114607	25468	12734	
NOVEMBER SETTLEMENT	<i>Un A</i> <i>Un Na</i>	71 1404	1421 56152	213 4211	3197 63171	711 14038	355 7019	254649 5968 145795
	Totals	1475	57573	4424	66368	14749	7374	
NOVEMBER to JANUARY	<i>Un A</i> <i>Un Na</i>	04 98	87 3933	13 295	196 4423	44 983	22 491	151963 366 10223
	Totals	102	4020	308	4619	1027	513	10589
ADDITIONS	School District No.							
	Totals							
REDUCTIONS	School District No.							
	Totals							

116-27
116-29
116-26
116-28
116-25
116-27
116-28
116-29
116-30
116-30
116-25
116-27

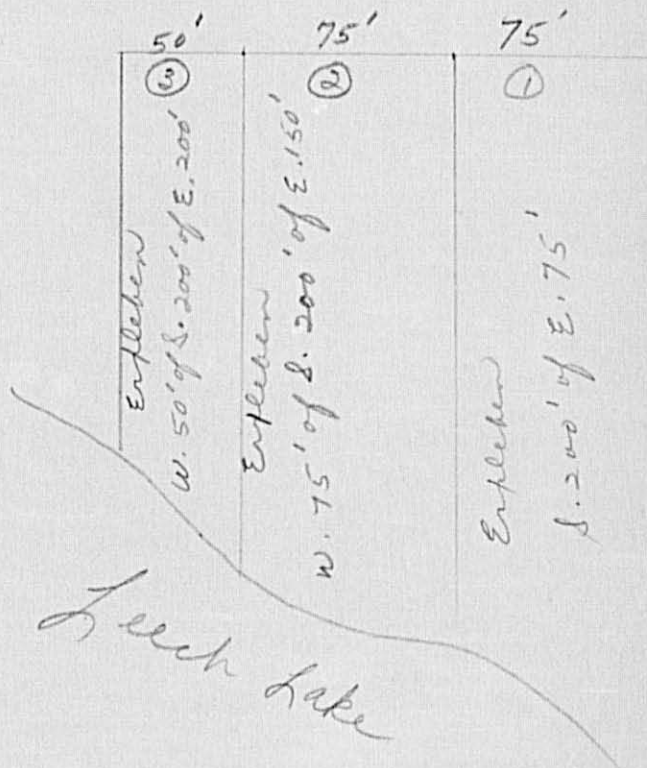
North

Govt Lot 2 Sec-17-144-28

West

Govt Lot 2 less
200' x 200'
Section 17-144-28
Mc Carthy

East



South

Assessment Roll and Tax List of Real Property in the Town of unorg. #5

Form 50 - 11-16-27

IN WHOSE NAME ASSESSED	TO WHOM TRANSFERRED	DESCRIPTION OF PROPERTY				No. School District	Indicate Homestead Yes or No	Indicate Agricultural Yes or No	TRUE AND FULL VALUATIONS					ASSESSED VALUATIONS					FINAL EQUALIZED VALUE		
		Subdivision	Sec. or Lot	Town or Block	Rtg.				Number of Acres of Land	LAND Exclusive of Structures and Improvements	BUILDINGS and Other Structures	MACHINERY Permanently Attached to Real Estate	TOTAL True and Full Value	RURAL		ALL OTHER		MACHINERY Permanently Attached to Real Estate		TOTAL ASSESSED VALUE	Total Assessed Value as Equalized by the Board of Review
														Acres	100ths	Homestead Up to \$4,000 20%	Over \$4,000 and Non-Homestead 33 1/3%				
Russell Lego		Lakeview Resort	1	1																	
"		"	2																		
"		"	3																		
Chas. M. Dunnington		"	4																		
Russell Lego		"	5																		
"		"	6																		
"		"	7																		
"		"	8																		
"		"	9																		
"		"	10																		
"		"	11																		
"		"	12																		
"		"	13																		
"		"	14																		
"		"	15																		
"		"	16																		
"		"	17																		
"		"	18																		
"		"	19																		
"		"	20																		

Cass County, Minnesota, for Taxes for the Year 1951.

SOLD FOR TAXES	VALUATIONS BY SCHOOL DISTRICTS AS EQUALIZED BY DEPARTMENT OF TAXATION						Tax including State Homestead	State Tax on Non-Homestead	SPECIAL TAXES	TOTAL TAXES	PAID	WHEN PAID	Number of Receipt	March Settlement 1952	June Settlement 1952	Penalty	November Settlement 1952	Penalty	Collections to First Monday in January 1953	Penalty	Delinquent on First Monday in January 1953	Total Delinquent Tax and Penalty	REMARKS
	District No.	Rate	District No.	Rate	District No.	Rate																	
	Dollars	Dollars	Dollars	Dollars	Dollars	Dollars																	
1																							
2																							
3																							
4																							
5																							
6																							
7																							
8																							
9																							
10																							
11																							
12																							
13																							
14																							
15																							
16																							
17																							
18																							
19																							
20																							

233

4710

50

4760

920

920

884

20.36

PORTRAGE LAKE

TED'S SUBDIVISION

