

ASSESSMENT & TAX LIST - 1962

Unorg. No. 4



SECTION	PAGE
---------	------

Sec. 1	
" 2	
" 3	
" 4	
" 5	
" 6	
" 7	
" 8	
" 9	
" 10	
" 11	
" 12	
" 13	
" 14	
" 15	
" 16	
" 17	
" 18	
" 19	
" 20	
" 21	
" 22	
" 23	
" 24	
" 25	
" 26	
" 27	
" 28	
" 29	
" 30	
" 31	
" 32	
" 33	
" 34	
" 35	
" 36	

Township No. Unorg. Range No. 4 Mer. P. M.

0	5	10	15	20	25
7	8	9	10	11	12
13	17	18	19	21	23
19	20	21	22	23	24
30	39	38	37	36	35
31	32	33	34	35	36

UNORGANIZED #4 CONTAINS  
TOWNSHIPS AS FOLLOWS:

ALL OF 142-25 IN SCHOOL DIST. #118

142-29 { EXCEPT SEC. 25 + 26  
{ BOY LAKE TWP., UNORG. SCH.

142-29 { EXCEPT EASTERN PART  
WHICH IS ATTACHED  
TO GOULD IN UNORG. TWP.

143-30 { EXCEPT Sec. 31-32  
EXCEPT Sec. 3-4-5-6  
7-8-9-18-19 in UNORG.

143-30 Sec. 31+32 IN #119

143-30 { Sec. 3-4-5-6  
7-8-9-18-19  
BECAME #3 ON  
8/22/52 } IN #115

Returns Showing Grain Received in or Handled by Elevators, Warehouses and Mills in the \_\_\_\_\_ of \_\_\_\_\_ in the  
County of \_\_\_\_\_ for the Year Ending May 1, 1962.

[illegible]

**Note ★ Assessors will not fill these Columns**



# SUMMARY OF TAX COLLECTION

Original Levy	-	-	-	-	-	\$	16,123.46
Additions	-	-	-	-	-	\$	
						\$	
Abatements	-	-	-	-	-	\$	31.82
						\$	16,091.64

## COLLECTIONS

March Settlement	-	-	-	-	-	\$	1436.99
June Settlement	-	-	-	-	-	\$	8146.03
November Settlement	-	-	-	-	-	\$	2618.81
January Settlement	-	-	-	-	-	\$	609.30
						\$	12,811.13
						\$	
Over Collected	-	-	-	-	-	\$	
Under Collected	-	-	-	-	-	\$	
Delinquent	-	-	-	-	-	\$	2280.51
Total	-	-	-	-	-	\$	16,091.64

Real Estate

142-25

142-29

143-30

Fairwood

Chippewa

Subdivision

Basswood



## RATES AND TAXES

COUNTY OF CASS, STATE OF MINNESOTA

Total Taxes Real Estate 14,396.98  
Pers. Prop. 1726.48  
Total 16,123.46

Total Number of Acres 3080.98  
**State of Minnesota,** }  
COUNTY OF CASS } ss.  
whereof is a true and correct Schedule, showing the valuation of all the taxable property, in the town  
of Amor. No. 4, in said County, the several rates of Taxation and Totals of the  
several Tax Funds levied thereon for the year A. D. 196 2.

Witness my hand and official seal, this 21<sup>st</sup> day of January A. D. 196 3

SEAL

L. C. Peterson County Auditor.  
By Helen Bollen. Deputy

Total Levy, \$ 16.123 46







Cass County, Minnesota, for Taxes for the Year 1962.

\* Indicate Type of Property: R-Residential, C-Commercial, I-Industrial, U-Utility, F-Farm, L-Lakeshore, T-Timber, M-Mineral

[illegible]



Cass County, Minnesota, for Taxes for the Year 1962.

[illegible]



**Cass County, Minnesota, for Taxes for the Year 1962.**

\* Indicate Type of Property: R-Residential, C-Commercial, I-Industrial, U-Utility, F-Farm, L-Lakeshore, T-Timber, M-Mineral

Division



Cass County, Minnesota, for Taxes for the Year 1962.

142-29  
143-30

Beach	Subdivision



**Cass County, Minnesota, for Taxes for the Year 1962.**

Form 5CD MILLER-DAVIS CO., MINNEAPOLIS

[illegible]



Cass County, Minnesota, for Taxes for the Year 1962.

\* Indicate Type of Property: R-Residential, C-Commercial, I-Industrial, U-Utility, F-Farm, L-Lakeshore, T-Timber, M-Mineral

[illegible]



[illegible]



Cass County, Minnesota, for Taxes for the Year 1962.

~~Purple~~  
~~2A~~

[illegible]



Cass County, Minnesota, for Taxes for the Year 1962.

\* Indicate Type of Property: R-Residential, C-Commercial, I-Industrial, U-Utility, F-Farm, L-Lakeshore, T-Timber, M-Mineral

ivision



Cass County, Minnesota, for Taxes for the Year 1962.

NA

[illegible]



Cass County, Minnesota, for Taxes for the Year 1962.

[illegible]

142-29	143-30
--------	--------

Subdivision	Beach	Trailwood



\* Indicate Type of Property: R-Residential, C-Commercial, I-Industrial, U-Utility, F-Farm, L-Lakeshore, T-Timber, M-Mineral

**Cass County, Minnesota, for Taxes for the Year 1962.**

[illegible]

142-29	143-30
--------	--------

Subdivision



Assessment Roll and Tax List of Real Property in the Town of Unorg. #4,  
 \* Indicate Type of Property: R-Residential, C-Commercial, I-Industrial, U-Utility, F-Farm, L-Lakeshore, T-Timber, M-Mineral

Form 5CD MILLER-DAYIS CO. MINNEAPOLIS

[illegible]

Cass County, Minnesota, for Taxes for the Year 1962.

[illegible]



\* Indicate Type of Property: R-Residential, C-Commercial, I-Industrial, U-Utility, F-Farm, L-Lakeshore, T-Timber, M-Mineral

[illegible]

**Cass County, Minnesota, for Taxes for the Year 1962.**

[illegible]



Assessment Roll and Tax List of Real Property in the Town of Unorg #4  
\* Indicate Type of Property: R-Residential, C-Commercial, I-Industrial, U-Utility, F-Farm, L-Lakeshore, T-Timber, M-Mineral

Form 5CD - MILLER-DAVIS CO., MINNEAPOLIS

IN WHOSE NAME ASSESSED		DESCRIPTION OF PROPERTY					No. School District	Indicate Homestead Yes or No	Agricult. or Seas. Recr. Yes or No	Indicate Type of Property	TRUE AND FULL VALUATIONS				ASSESSED VALUATIONS										FINAL EQUALIZE VALUE																																																																																																																																																																																																																																																																																																																																																																																																																																																																																																																																																																																																																																																																																																																																																																																																																																																																																																																																																																																																																																																																																																																																																																																																	
		SUBDIVISION	Sec. or Lot	Town or Block	Rng.	Number of Acres of Land					LAND Exclusive of Structures and Improvements	BUILDINGS and Other Structures	MACHINERY Permanently Attached to Real Estate	TOTAL True and Full Value	RURAL		ALL OTHER				MACHINERY Permanently Attached to Real Estate	Seasonal and Recreational Cabins	TOTAL ASSESSED VALUE	Total Assessed Value as Equalized by the Board of Review																																																																																																																																																																																																																																																																																																																																																																																																																																																																																																																																																																																																																																																																																																																																																																																																																																																																																																																																																																																																																																																																																																																																																																																																		
															Homestead Up to \$4,000 20%	Over \$4,000 and Non-Homestead 33 1/2 %	Timber Land Class 3e 20%	Homestead Up to \$4,000 25%	Over \$4,000 and Non-Homestead 40%	33 1/2 %						33 1/2 %																																																																																																																																																																																																																																																																																																																																																																																																																																																																																																																																																																																																																																																																																																																																																																																																																																																																																																																																																																																																																																																																																																																																																																																																
																											Acres	100ths	Dollars	Dollars	Dollars	Dollars	Dollars	Dollars	Dollars	Dollars	Dollars	Dollars																																																																																																																																																																																																																																																																																																																																																																																																																																																																																																																																																																																																																																																																																																																																																																																																																																																																																																																																																																																																																																																																																																																																																																																				
State of Minnesota	1	N E 1/4 of N E 1/4	14	142	25		118																																																																																																																																																																																																																																																																																																																																																																																																																																																																																																																																																																																																																																																																																																																																																																																																																																																																																																																																																																																																																																																																																																																																																																																																																			</

Cass County, Minnesota, for Taxes for the Year 1962.

SOLD FOR TAXES	VALUATIONS BY SCHOOL DISTRICTS AS EQUALIZED BY DEPARTMENT OF TAXATION						Tax Including State Homestead	State Tax on Non-Homestead	SPECIAL TAXES	SPECIAL TAXES	TOTAL TAXES	PAID	WHEN PAID	Number of Receipt	March Settlement 1963	June Settlement 1963	Penalty	November Settlement 1963	Penalty	Collections to First Monday in January 1964	Penalty	Delinquent on First Monday in January 1964	Total Delinquent Tax and Penalty	REMARKS
	District No.	District No.	District No.	District No.	District No.	District No.																		
	Rate	Rate	Rate	Rate	Rate	Rate																		
	Mills	Mills	Mills	Mills	Mills	Mills																		
1							\$ cts.	\$ cts.	\$ cts.	\$ cts.	\$ cts.		Month Day Year		\$ cts.	\$ cts.	\$ cts.	\$ cts.	\$ cts.	\$ cts.	\$ cts.	\$ cts.	\$ cts.	
2												1												
3												2												
4												3												
5												4												
6												5												
7												6												
8												7												
9												8												
10												9												
11												10												
12												11												
13												12												
14												13												
15												14												
16												15												
17												16												
18												17												
19												18												
20												19												
												20												

142-29 143-30

Fairwood Subdivision



\* Indicate Type of Property: R-Residential, C-Commercial, I-Industrial, U-Utility, F-Farm, L-Lakeshore, T-Timber, M-Mineral

[illegible]

## Cass County, Minnesota, for Taxes for the Year 1962.

[illegible]

Subdivision



Assessment Roll and Tax List of Real Property in the Town of Unorg. #4,  
\* Indicate Type of Property: R-Residential, C-Commercial, I-Industrial, U-Utility, F-Farm, L-Lakeshore, T-Timber, M-Mineral

Cass County, Minnesota, for Taxes for the Year 1962.

IN WHOSE NAME ASSESSED	DESCRIPTION OF PROPERTY				No. School District	Indicate Homestead Yes or No	Agricultural or Recreational Yes or No	Indicate Type of Property	TRUE AND FULL VALUATIONS				ASSESSED VALUATIONS										FINAL EQUALIZED VALUE																																																																																																																																																																																																																																																																																																																																																																																																																																																																																																																																																																																																																																																																																																																				
	SUBDIVISION	Sec. or Lot	Town or Block	Rng.					Number of Acres of Land	LAND Exclusive of Structures and Improvements	BUILDINGS and Other Structures	MACHINERY Permanently Attached to Real Estate	TOTAL True and Full Value	RURAL					ALL OTHER					TOTAL ASSESSED VALUE	Total Assessed Value as Equalized by the Board of Review																																																																																																																																																																																																																																																																																																																																																																																																																																																																																																																																																																																																																																																																																																																		
														Homestead Up to \$4,000 20%	Over \$4,000 and Non-Homestead 33 1/3 %	Timber Land Class 3e 20%	Homestead Up to \$4,000 25%	Over \$4,000 and Non-Homestead 40%	MACHINERY Permanently Attached to Real Estate 33 1/3 %	Seasonal and Recreational Cabins 33 1/3 %	TOTAL ASSESSED VALUE																																																																																																																																																																																																																																																																																																																																																																																																																																																																																																																																																																																																																																																																																																																						
																						Dollars				Dollars	Dollars	Dollars	Dollars	Dollars	Dollars	Dollars																																																																																																																																																																																																																																																																																																																																																																																																																																																																																																																																																																																																																																																																																																											
Acres	100ths	Dollars	Dollars	Dollars	Dollars	Dollars	Dollars	Dollars	Dollars	Dollars	Dollars	Dollars	Dollars	Dollars	Dollars	Dollars	Dollars	Dollars	Dollars	Dollars	Dollars	Dollars	Dollars	Dollars	Dollars	Dollars	Dollars	Dollars	Dollars	Dollars	Dollars	Dollars	Dollars	Dollars	Dollars	Dollars	Dollars	Dollars	Dollars	Dollars	Dollars	Dollars	Dollars	Dollars	Dollars	Dollars	Dollars	Dollars	Dollars	Dollars	Dollars	Dollars	Dollars	Dollars	Dollars	Dollars	Dollars	Dollars	Dollars	Dollars	Dollars	Dollars	Dollars	Dollars	Dollars	Dollars	Dollars	Dollars	Dollars	Dollars	Dollars	Dollars	Dollars	Dollars	Dollars	Dollars	Dollars	Dollars	Dollars	Dollars	Dollars	Dollars	Dollars	Dollars	Dollars	Dollars	Dollars	Dollars	Dollars	Dollars	Dollars	Dollars	Dollars	Dollars	Dollars	Dollars	Dollars	Dollars	Dollars	Dollars	Dollars	Dollars	Dollars	Dollars	Dollars	Dollars	Dollars	Dollars	Dollars	Dollars	Dollars	Dollars	Dollars	Dollars	Dollars	Dollars	Dollars	Dollars	Dollars	Dollars	Dollars	Dollars	Dollars	Dollars	Dollars	Dollars	Dollars	Dollars	Dollars	Dollars	Dollars	Dollars	Dollars	Dollars	Dollars	Dollars	Dollars	Dollars	Dollars	Dollars	Dollars	Dollars	Dollars	Dollars	Dollars	Dollars	Dollars	Dollars	Dollars	Dollars	Dollars	Dollars	Dollars	Dollars	Dollars	Dollars	Dollars	Dollars	Dollars	Dollars	Dollars	Dollars	Dollars	Dollars	Dollars	Dollars	Dollars	Dollars	Dollars	Dollars	Dollars	Dollars	Dollars	Dollars	Dollars	Dollars	Dollars	Dollars	Dollars	Dollars	Dollars	Dollars	Dollars	Dollars	Dollars	Dollars	Dollars	Dollars	Dollars	Dollars	Dollars	Dollars	Dollars	Dollars	Dollars	Dollars	Dollars	Dollars	Dollars	Dollars	Dollars	Dollars	Dollars	Dollars	Dollars	Dollars	Dollars	Dollars	Dollars	Dollars	Dollars	Dollars	Dollars	Dollars	Dollars	Dollars	Dollars	Dollars	Dollars	Dollars	Dollars	Dollars	Dollars	Dollars	Dollars	Dollars	Dollars	Dollars	Dollars	Dollars	Dollars	Dollars	Dollars	Dollars	Dollars	Dollars	Dollars	Dollars	Dollars	Dollars	Dollars	Dollars	Dollars	Dollars	Dollars	Dollars	Dollars	Dollars	Dollars	Dollars	Dollars	Dollars	Dollars	Dollars	Dollars	Dollars	Dollars	Dollars	Dollars	Dollars	Dollars	Dollars	Dollars	Dollars	Dollars	Dollars	Dollars	Dollars	Dollars	Dollars	Dollars	Dollars	Dollars	Dollars	Dollars	Dollars	Dollars	Dollars	Dollars	Dollars	Dollars	Dollars	Dollars	Dollars	Dollars	Dollars	Dollars	Dollars	Dollars	Dollars	Dollars	Dollars	Dollars	Dollars	Dollars	Dollars	Dollars	Dollars	Dollars	Dollars	Dollars	Dollars	Dollars	Dollars	Dollars	Dollars	Dollars	Dollars	Dollars	Dollars	Dollars	Dollars	Dollars	Dollars	Dollars	Dollars	Dollars	Dollars	Dollars	Dollars	Dollars	Dollars	Dollars	Dollars	Dollars	Dollars	Dollars	Dollars	Dollars	Dollars	Dollars	Dollars	Dollars	Dollars	Dollars	Dollars	Dollars	Dollars	Dollars	Dollars	Dollars	Dollars	Dollars	Dollars	Dollars	Dollars	Dollars	Dollars	Dollars	Dollars	Dollars	Dollars	Dollars	Dollars	Dollars	Dollars	Dollars	Dollars	Dollars	Dollars	Dollars	Dollars	Dollars	Dollars	Dollars	Dollars	Dollars	Dollars	Dollars	Dollars	Dollars	Dollars	Dollars	Dollars	Dollars	Dollars	Dollars	Dollars	Dollars	Dollars	Dollars	Dollars	Dollars	Dollars	Dollars	Dollars	Dollars	Dollars	Dollars	Dollars	Dollars	Dollars	Dollars	Dollars	Dollars	Dollars	Dollars	Dollars	Dollars	Dollars	Dollars	Dollars	Dollars	Dollars	Dollars	Dollars	Dollars	Dollars	Dollars	Dollars	Dollars	Dollars	Dollars	Dollars	Dollars	Dollars	Dollars	Dollars	Dollars	Dollars	Dollars	Dollars	Dollars	Dollars	Dollars	Dollars	Dollars	Dollars	Dollars	Dollars	Dollars	Dollars	Dollars	Dollars	Dollars	Dollars	Dollars	Dollars	Dollars	Dollars	Dollars	Dollars	Dollars	Dollars	Dollars	Dollars	Dollars	Dollars	Dollars	Dollars	Dollars	Dollars	Dollars	Dollars	Dollars	Dollars	Dollars	Dollars	Dollars	Dollars	Dollars	Dollars	Dollars	Dollars	Dollars	Dollars	Dollars	Dollars	Dollars	Dollars	Dollars	Dollars	Dollars	Dollars	Dollars	Dollars	Dollars	Dollars	Dollars	Dollars	Dollars	Dollars	Dollars	Dollars	Dollars	Dollars	Dollars	Dollars	Dollars	Dollars	Dollars	Dollars	Dollars	Dollars	Dollars	Dollars	Dollars	Dollars	Dollars	Dollars	Dollars	Dollars	Dollars	Dollars	Dollars	Dollars	Dollars	Dollars	Dollars	Dollars	Dollars	Dollars	Dollars	Dollars	Dollars	Dollars	Dollars	Dollars	Dollars	Dollars	Dollars	Dollars	Dollars	Dollars	Dollars	Dollars	Dollars	Dollars	Dollars	Dollars	Dollars	Dollars	Dollars	Dollars	Dollars	Dollars	Dollars	Dollars	Dollars	Dollars	Dollars	Dollars	Dollars	Dollars	Dollars	Dollars	Dollars	Dollars	Dollars	Dollars	Dollars	Dollars	Dollars	Dollars	Dollars	Dollars	Dollars	Dollars	Dollars	Dollars	Dollars	Dollars	Dollars	Dollars	Dollars	Dollars	Dollars	Dollars	Dollars	Dollars	Dollars	Dollars	Dollars	Dollars	Dollars	Dollars	Dollars	Dollars	Dollars	Dollars	Dollars	Dollars	Dollars	Dollars	Dollars	Dollars	Dollars	Dollars	Dollars	Dollars	Dollars	Dollars	Dollars	Dollars	Dollars	Dollars	Dollars	Dollars	Dollars	Dollars	Dollars	Dollars	Dollars	Dollars	Dollars	Dollars	Dollars	Dollars	Dollars	Dollars	Dollars	Dollars	Dollars	Dollars	Dollars	Dollars	Dollars	Dollars	Dollars	Dollars	Dollars	Dollars	Dollars	Dollars	Dollars	Dollars	Dollars	Dollars	Dollars	Dollars	Dollars	Dollars	Dollars	Dollars	Dollars	Dollars	Dollars	Dollars	Dollars	Dollars	Dollars	Dollars	Dollars	Dollars	Dollars	Dollars	Dollars	Dollars	Dollars	Dollars	Dollars	Dollars	Dollars	Dollars	Dollars	Dollars	Dollars	Dollars	Dollars	Dollars	Dollars	Dollars	Dollars	Dollars	Dollars	Dollars	Dollars	Dollars	Dollars	Dollars	Dollars	Dollars	Dollars	Dollars	Dollars	Dollars	Dollars	Dollars	Dollars	Dollars	Dollars	Dollars	Dollars	Dollars	Dollars	Dollars	Dollars	Dollars	Dollars	Dollars	Dollars	Dollars	Dollars	Dollars	Dollars	Dollars	Dollars	Dollars	Dollars	Dollars	Dollars	Dollars	Dollars	Dollars	Dollars	Dollars	Dollars	Dollars	Dollars	Dollars	Dollars	Dollars	Dollars	Dollars	Dollars



[illegible]



[illegible]



Cass County, Minnesota, for Taxes for the Year 1962.

[illegible]

142-29

143-30

[illegible]



Assessment Roll and Tax List of Real Property in the Town of Unorganized #4  
\* Indicate Type of Property: R-Residential, C-Commercial, I-Industrial, U-Utility, F-Farm, L-Lakeshore, T-Timber, M-Mineral

Form 500 MILLER-DAVIS CO., MINNEAPOLIS

IN WHOSE NAME ASSESSED		DESCRIPTION OF PROPERTY					No. School District	Indicate Homestead Yes or No	Agricultural Recr. Yes or No	Indicate Type of Property	TRUE AND FULL VALUATIONS				ASSESSED VALUATIONS										FINAL EQUALIZE VALUE	
		SUBDIVISION	Sec. or Lot	Town or Block	Rng.	Number of Acres of Land					LAND Exclusive of Structures and Improvements	BUILDINGS and Other Structures	MACHINERY Permanently Attached to Real Estate	TOTAL True and Full Value	RURAL		ALL OTHER				MACHINERY Permanently Attached to Real Estate	Seasonal and Recreational Cabins	TOTAL ASSESSED VALUE	Total Assessed Value as Equalized by the Board of Review		
															Acres	100ths	Homestead Up to \$4,000 20%	Over \$4,000 and Non-Homestead 33 1/3%	Timber Land Class 3e 20%	Homestead Up to \$4,000 25%						Over \$4,000 and Non-Homestead 40%
U. S. of America	1	N E 1/4 of N E 1/4				20.142 25			118																	
U. S. of America	2	N W 1/4 of N E 1/4																								
U. S. of America	3	S W 1/4 of N E 1/4																								
U. S. of America	4	S E 1/4 of N E 1/4																								
	5																									
U. S. of America	6	N E 1/4 of N W 1/4																								
U. S. of America	7	N W 1/4 of N W 1/4																								
U. S. of America	8	S W 1/4 of N W 1/4																								
U. S. of America	9	S E 1/4 of N W 1/4																								
	10																									
U. S. of America	11	N E 1/4 of S W 1/4																								
U. S. of America	12	N W 1/4 of S W 1/4																								
U. S. of America	13	S W 1/4 of S W 1/4																								
U. S. of America	14	S E 1/4 of S W 1/4																								
	15																									
U. S. of America	16	N E 1/4 of S E 1/4																								
U. S. of America	17	N W 1/4 of S E 1/4																								
U. S. of America	18	S W 1/4 of S E 1/4																								
U. S. of America	19	S E 1/4 of S E 1/4																								
	20																									

Cass County, Minnesota, for Taxes for the Year 1962.

SOLD FOR TAXES	VALUATIONS BY SCHOOL DISTRICTS AS EQUALIZED BY DEPARTMENT OF TAXATION						Tax Including State Homestead	State Tax on Non-Homestead	SPECIAL TAXES	SPECIAL TAXES	TOTAL TAXES	PAID	WHEN PAID			Number of Receipt	March Settlement 1963	June Settlement 1963	Penalty	November Settlement 1963	Penalty	Collections to First Monday in January 1964	Penalty	Delinquent on First Monday in January 1964	Total Delinquent Tax and Penalty	REMARKS
	District No.	District No.	District No.	District No.	District No.	District No.							Month	Day	Year											
	Rate	Rate	Rate	Rate	Rate	Rate																				
	Dollars	Dollars	Dollars	Dollars	Dollars	Dollars																				
1																										
2																										
3																										
4																										
5																										
6																										
7																										
8																										
9																										
10																										
11																										
12																										
13																										
14																										
15																										
16																										
17																										
18																										
19																										
20																										

142-29 143-30 Fairwood Chippewa Subdivision



[illegible]



Cass County, Minnesota, for Taxes for the Year 1962.

143-30

Subdivisions



Assessment Roll and Tax List of Real Property in the Town of Unorg. #4,  
 \* Indicate Type of Property: R-Residential, C-Commercial, I-Industrial, U-Utility, F-Farm, L-Lakeshore, T-Timber, M-Mineral

Form 50D - MILLER-DAVIS CO., MINNEAPOLIS

IN WHOSE NAME ASSESSED		DESCRIPTION OF PROPERTY					No. School District	Indicate Home-stead Yes or No	Agri. or Recr. Yes or No	Indicate Type of Property	TRUE AND FULL VALUATIONS				ASSESSED VALUATIONS								FINAL EQUALIZED VALUE			
		SUBDIVISION	Sec. or Lot	Town or Block	Rng.	Number of Acres of Land					LAND Exclusive of Structures and Improvements	BUILDINGS and Other Structures	MACHINERY Permanently Attached to Real Estate	TOTAL True and Full Value	RURAL		ALL OTHER		MACHINERY Permanently Attached to Real Estate	Seasonal and Recreational Cabins	TOTAL ASSESSED VALUE	Total Assessed Value as Equalized by the Board of Review				
															Acres	100ths	Homestead Up to \$4,000 20%	Over \$4,000 and Non-Homestead 33 1/3%						Timber Land Class 3e 20%	Homestead Up to \$4,000 25%	Over \$4,000 and Non-Homestead 40%
U. S. of America	1	NE 1/4 of NE 1/4	23	142	25	118																				
U. S. of America	2	NW 1/4 of NE 1/4																								
U. S. of America	3	SW 1/4 of NE 1/4																								
U. S. of America	4	SE 1/4 of NE 1/4																								
	5																									
U. S. of America	6	NE 1/4 of NW 1/4																								
U. S. of America	7	NW 1/4 of NW 1/4																								
U. S. of America	8	SW 1/4 of NW 1/4																								
U. S. of America	9	SE 1/4 of NW 1/4																								
	10																									
U. S. of America	11	NE 1/4 of SW 1/4																								
U. S. of America	12	NW 1/4 of SW 1/4																								
U. S. of America	13	SW 1/4 of SW 1/4																								
U. S. of America	14	SE 1/4 of SW 1/4																								
	15																									
U. S. of America	16	NE 1/4 of SE 1/4																								
U. S. of America	17	NW 1/4 of SE 1/4																								
U. S. of America	18	SW 1/4 of SE 1/4																								
U. S. of America	19	SE 1/4 of SE 1/4																								
	20																									

## Cass County, Minnesota, for Taxes for the Year 1962.

SOLD FOR TAXES	VALUATIONS BY SCHOOL DISTRICTS AS EQUALIZED BY DEPARTMENT OF TAXATION						Tax Including State Homestead	State Tax on Non-Homestead	SPECIAL TAXES	SPECIAL TAXES	TOTAL TAXES	PAID	WHEN PAID	Number of Receipt	March Settlement 1963	June Settlement 1963	Penalty	November Settlement 1963	Penalty	Collections to First Monday in January 1964	Penalty	Delinquent on First Monday in January 1964	Total Delinquent Tax and Penalty	REMARKS
	District No.	District No.	District No.	District No.	District No.	District No.																		
	Rate	Rate	Rate	Rate	Rate	Rate																		
	Mills	Mills	Mills	Mills	Mills	Mills																		
	Dollars	Dollars	Dollars	Dollars	Dollars	Dollars	\$ cts.	\$ cts.	\$ cts.	\$ cts.	\$ cts.		Month Day Year		\$ cts.	\$ cts.	\$ cts.	\$ cts.	\$ cts.	\$ cts.	\$ cts.	\$ cts.	\$ cts.	
1																								
2																								
3																								
4																								
5																								
6																								
7																								
8																								
9																								
10																								
11																								
12																								
13																								
14																								
15																								
16																								
17																								
18																								
19																								
20																								



Assessment Roll and Tax List of Real Property in the Town of Unorg #4

\* Indicate Type of Property: R-Residential, C-Commercial, I-Industrial, U-Utility, F-Farm, L-Lakeshore, T-Timber, M-Mineral

Form SCD - MILLER-DAVIS CO., MINNEAPOLIS

IN WHOSE NAME ASSESSED		DESCRIPTION OF PROPERTY					No. School District	Indicate Homestead Yes or No	Agricult. Recr. Yes or No	Indicate Type of Property	TRUE AND FULL VALUATIONS				ASSESSED VALUATIONS										FINAL EQUALIZED VALUE					
		SUBDIVISION	Sec. or Lot	Town or Block	Rng.	Number of Acres of Land					LAND Exclusive of Structures and Improvements	BUILDINGS and Other Structures	MACHINERY Permanently Attached to Real Estate	TOTAL True and Full Value	RURAL		ALL OTHER						MACHINERY Permanently Attached to Real Estate	Seasonal and Recreational Cabins		TOTAL ASSESSED VALUE	Total Assessed Value as Equalized by the Board of Review			
															Acres	100ths	Homestead Up to \$4,000 20%	Over \$4,000 and Non-Homestead 33 1/3%	Timber Land Class 3e 20%	Homestead Up to \$4,000 25%	Over \$4,000 and Non-Homestead 40%	33 1/3%						33 1/3%	Dollars	Dollars
											Dollars	Dollars	Dollars	Dollars	Dollars	Dollars	Dollars	Dollars	Dollars	Dollars	Dollars	Dollars	Dollars							
U. S. of America		1				NE 1/4 of NE 1/4	24 1/2 25			118																				
U. S. of America		2				NW 1/4 of NE 1/4																								
U. S. of America		3				SW 1/4 of NE 1/4																								
U. S. of America		4				SE 1/4 of NE 1/4																								
		5																												
U. S. of America		6				NE 1/4 of NW 1/4																								
U. S. of America		7				NW 1/4 of NW 1/4																								
U. S. of America		8				SW 1/4 of NW 1/4																								
U. S. of America		9				SE 1/4 of NW 1/4																								
		10																												
U. S. of America		11				NE 1/4 of SW 1/4																								
U. S. of America		12				NW 1/4 of SW 1/4																								
U. S. of America		13				SW 1/4 of SW 1/4																								
U. S. of America		14				SE 1/4 of SW 1/4																								
		15																												
U. S. of America		16				NE 1/4 of SE 1/4																								
U. S. of America		17				NW 1/4 of SE 1/4																								
U. S. of America		18				SW 1/4 of SE 1/4																								
U. S. of America		19				SE 1/4 of SE 1/4																								
		20																												

Cass County, Minnesota, for Taxes for the Year 1962.

SOLD FOR TAXES	VALUATIONS BY SCHOOL DISTRICTS AS EQUALIZED BY DEPARTMENT OF TAXATION						Tax Including State Homestead	State Tax on Non-Homestead	SPECIAL TAXES	SPECIAL TAXES	TOTAL TAXES	PAID	WHEN PAID	Number of Receipt	March Settlement 1963	June Settlement 1963	Penalty	November Settlement 1963	Penalty	Collections to First Monday in January 1964	Penalty	Delinquent on First Monday in January 1964	Total Delinquent Tax and Penalty	REMARKS
	District No.	District No.	District No.	District No.	District No.	District No.																		
	Rate	Rate	Rate	Rate	Rate	Rate																		
	Mills	Mills	Mills	Mills	Mills	Mills																		
	Dollars	Dollars	Dollars	Dollars	Dollars	Dollars	\$ cts.	\$ cts.	\$ cts.	\$ cts.	\$ cts.		Month Day Year		\$ cts.	\$ cts.	\$ cts.	\$ cts.	\$ cts.	\$ cts.	\$ cts.	\$ cts.	\$ cts.	
1												1												
2												2												
3												3												
4												4												
5												5												
6												6												
7												7												
8												8												
9												9												
10												10												
11												11												
12												12												
13												13												
14												14												
15												15												
16												16												
17												17												
18												18												
19												19												
20												20												

142-29 143-30

Fairwood Chippewa Beach Fairwood Subdivision



Assessment Roll and Tax List of Real Property in the Town of Unorg. #4,  
\* Indicate Type of Property: R-Residential, C-Commercial, I-Industrial, U-Utility, F-Farm, L-Lakeshore, T-Timber, M-Mineral

Form SCD MILLER-DAVIS CO., MINNEAPOLIS

IN WHOSE NAME ASSESSED		DESCRIPTION OF PROPERTY					No. School District	Indicate Homestead Yes or No	Agricultural or Seasonal Recr. Yes or No	Indicate Type of Property	TRUE AND FULL VALUATIONS				ASSESSED VALUATIONS										FINAL EQUALIZED VALUE
		SUBDIVISION	Sec. or Lot	Town or Block	Rng.	Number of Acres of Land					LAND Exclusive of Structures and Improvements	BUILDINGS and Other Structures	MACHINERY Permanently Attached to Real Estate	TOTAL True and Full Value	RURAL		ALL OTHER		MACHINERY Permanently Attached to Real Estate	Seasonal and Recreational Cabins	TOTAL ASSESSED VALUE	Total Assessed Value as Equalized by the Board of Review			
															Homestead Up to \$4,000 20%	Over \$4,000 and Non-Homestead 33 1/3 %	Timber Land Class 3e 20%	Homestead Up to \$4,000 25%					Over \$4,000 and Non-Homestead 40%		
																								Acres	
Dollars	Dollars	Dollars	Dollars	Dollars	Dollars	Dollars	Dollars	Dollars	Dollars	Dollars	Dollars	Dollars	Dollars	Dollars	Dollars	Dollars	Dollars	Dollars	Dollars						
U. S. of America	1	NE 1/4 of NE 1/4	25	142	25		118																		
U. S. of America	2	NW 1/4 of NE 1/4																							
U. S. of America	3	SW 1/4 of NE 1/4																							
U. S. of America	4	SE 1/4 of NE 1/4																							
	5																								
U. S. of America	6	NE 1/4 of NW 1/4																							
U. S. of America	7	NW 1/4 of NW 1/4																							
U. S. of America	8	SW 1/4 of NW 1/4																							
U. S. of America	9	SE 1/4 of NW 1/4																							
	10																								
U. S. of America	11	NE 1/4 of SW 1/4																							
U. S. of America	12	NW 1/4 of SW 1/4																							
U. S. of America	13	SW 1/4 of SW 1/4																							
U. S. of America	14	SE 1/4 of SW 1/4																							
	15																								
U. S. of America	16	NE 1/4 of SE 1/4																							
U. S. of America	17	NW 1/4 of SE 1/4																							
U. S. of America	18	SW 1/4 of SE 1/4																							
U. S. of America	19	SE 1/4 of SE 1/4																							
	20																								

Cass County, Minnesota, for Taxes for the Year 1962.

SOLD FOR TAXES	VALUATIONS BY SCHOOL DISTRICTS AS EQUALIZED BY DEPARTMENT OF TAXATION						Tax Including State Homestead	State Tax on Non-Homestead	SPECIAL TAXES	SPECIAL TAXES	TOTAL TAXES	PAID	WHEN PAID	Number of Receipt	March Settlement 1963	June Settlement 1963	Penalty	November Settlement 1963	Penalty	Collections to First Monday in January 1964	Penalty	Delinquent on First Monday in January 1964	Total Delinquent Tax and Penalty	REMARKS
	District No.	District No.	District No.	District No.	District No.	District No.																		
	Rate	Rate	Rate	Rate	Rate	Rate																		
	Mills	Mills	Mills	Mills	Mills	Mills																		
	Dollars	Dollars	Dollars	Dollars	Dollars	Dollars	\$ cts.	\$ cts.	\$ cts.	\$ cts.	\$ cts.		Month Day Year		\$ cts.	\$ cts.	\$ cts.	\$ cts.	\$ cts.	\$ cts.	\$ cts.	\$ cts.	\$ cts.	
1												1												
2												2												
3												3												
4												4												
5												5												
6												6												
7												7												
8												8												
9												9												
10												10												
11												11												
12												12												
13												13												
14												14												
15												15												
16												16												
17												17												
18												18												
19												19												
20												20												

142-29 143-30

Fairwood Chippewa Beach Subdivision



Assessment Roll and Tax List of Real Property in the Town of Unorg. # 4  
\* Indicate Type of Property: R-Residential, C-Commercial, I-Industrial, U-Utility, F-Farm, L-Lakeshore, T-Timber, M-Mineral

Form 500 MILLER-DAVIS CO., MINNEAPOLIS

IN WHOSE NAME ASSESSED	DESCRIPTION OF PROPERTY				No. School District	Indicate Homestead Yes or No	Agricult. or Recr. Yes or No	* Indicate Type of Property	TRUE AND FULL VALUATIONS				ASSESSED VALUATIONS								FINAL EQUALIZED VALUE			
	SUBDIVISION	Sec. or Lot	Town or Block	Rng.					Number of Acres of Land	LAND Exclusive of Structures and Improvements	BUILDINGS and Other Structures	MACHINERY Permanently Attached to Real Estate	TOTAL True and Full Value	RURAL		ALL OTHER						TOTAL ASSESSED VALUE	Total Assessed Value as Equalized by the Board of Review	
														Homestead Up to \$4,000 20%	Over \$4,000 and Non-Homestead 33 1/3 %	Timber Land Class 3e 20%	Homestead Up to \$4,000 25%	Over \$4,000 and Non-Homestead 40%	MACHINERY Permanently Attached to Real Estate 33 1/3 %	Seasonal and Recreational Cabins 33 1/3 %				
																								Dollars
U. S. of America	1				2.6 142 25	118																		
U. S. of America	2																							
U. S. of America	3																							
U. S. of America	4																							
	5																							
U. S. of America	6																							
U. S. of America	7																							
U. S. of America	8																							
U. S. of America	9																							
	10																							
U. S. of America	11																							
U. S. of America	12																							
U. S. of America	13																							
State of Minnesota	14																							
	15																							
U. S. of America	16																							
U. S. of America	17																							
State of Minnesota	18																							
U. S. of America	19																							
	20																							

Cass County, Minnesota, for Taxes for the Year 1962.

SOLD FOR TAXES	VALUATIONS BY SCHOOL DISTRICTS AS EQUALIZED BY DEPARTMENT OF TAXATION						Tax Including State Homestead	State Tax on Non-Homestead	SPECIAL TAXES	SPECIAL TAXES	TOTAL TAXES	PAID	WHEN PAID	Number of Receipt	March Settlement 1961	June Settlement 1961	Penalty	November Settlement 1961	Penalty	Collections to First Monday in January 1962	Penalty	Delinquent on First Monday in January 1962	Total Delinquent Tax and Penalty	REMARKS
	District No.	District No.	District No.	District No.	District No.	District No.																		
	Rate	Rate	Rate	Rate	Rate	Rate																		
	Mills	Mills	Mills	Mills	Mills	Mills																		
1							\$ cts.	\$ cts.	\$ cts.	\$ cts.	\$ cts.		Month Day Year		\$ cts.	\$ cts.	\$ cts.	\$ cts.	\$ cts.	\$ cts.	\$ cts.	\$ cts.	\$ cts.	
2																								
3																								
4																								
5																								
6																								
7																								
8																								
9																								
10																								
11																								
12																								
13																								
14																								
15																								
16																								
17																								
18																								
19																								
20																								

142-29 143-30  
Chippewa  
Hesswood  
Shelbyville



**Cass County, Minnesota, for Taxes for the Year 1962.**

Form 5CD MILLER-DAVIS CO., MINNEAPOLIS

[illegible]



# Cass County, Minnesota, for Taxes for the Year 1962.

\* Indicate Type of Property: R-Residential, C-Commercial, I-Industrial, U-Utility, F-Farm, L-Lakeshore, T-Timber, M-Mineral

[illegible]



Cass County, Minnesota, for Taxes for the Year 1962.

Form 5CD MILLER-DAVIS CO., MINNEAPOLIS

[illegible]



Cass County, Minnesota, for Taxes for the Year 1962.

NA

[illegible]



## Cass County, Minnesota, for Taxes for the Year 1962.

\* Indicate Type of Property: R-Residential, C-Commercial, I-Industrial, U-Utility, F-Farm, L-Lakeshore, T-Timber, M-Mineral

142-29	143-30
--------	--------

[illegible]



Cass County, Minnesota, for Taxes for the Year 1962.

\* Indicate Type of Property: R-Residential, C-Commercial, I-Industrial, U-Utility, F-Farm, L-Lakeshore, T-Timber, M-Mineral

[illegible]



Assessment Roll and Tax List of Real Property in the Town of Unorg #4,  
\* Indicate Type of Property: R-Residential, C-Commercial, I-Industrial, U-Utility, F-Farm, L-Lakeshore, T-Timber, M-Mineral

Form 5CD - MILLER-DAVIS CO., MINNEAPOLIS

IN WHOSE NAME ASSESSED	DESCRIPTION OF PROPERTY					No. School District	Indicate Homestead Yes or No	Agri. or Seas. Recr. Yes or No	* Indicate Type of Property	TRUE AND FULL VALUATIONS				ASSESSED VALUATIONS										FINAL EQUALIZE VALUE	
	SUBDIVISION	Sec. or Lot	Town or Block	Rng.	Number of Acres of Land					LAND Exclusive of Structures and Improvements	BUILDINGS and Other Structures	MACHINERY Permanently Attached to Real Estate	TOTAL True and Full Value	RURAL		ALL OTHER				MACHINERY Permanently Attached to Real Estate	Seasonal and Recreational Cabins	TOTAL ASSESSED VALUE	Total Assessed Value as Equalized by the Board of Review		
														Acres	100ths	Homestead Up to \$4,000 20%	Over \$4,000 and Non-Homestead 33 1/3 %	Timber Land Class 3e 20%	Homestead Up to \$4,000 25%						Over \$4,000 and Non-Homestead 40%
U. S. of America	1	N E 1/4 of N E 1/4	33	142	25		118																		
U. S. of America	2	N W 1/4 of N E 1/4																							
U. S. of America	3	S W 1/4 of N E 1/4																							
U. S. of America	4	S E 1/4 of N E 1/4																							
	5																								
U. S. of America	6	N E 1/4 of N W 1/4																							
U. S. of America	7	N W 1/4 of N W 1/4																							
U. S. of America	8	S W 1/4 of N W 1/4																							
U. S. of America	9	S E 1/4 of N W 1/4																							
	10																								
U. S. of America	11	N E 1/4 of S W 1/4																							
U. S. of America	12	N W 1/4 of S W 1/4																							
U. S. of America	13	S W 1/4 of S W 1/4																							
U. S. of America	14	S E 1/4 of S W 1/4																							
	15																								
U. S. of America	16	N E 1/4 of S E 1/4																							
U. S. of America	17	N W 1/4 of S E 1/4																							
U. S. of America	18	S W 1/4 of S E 1/4																							
U. S. of America	19	S E 1/4 of S E 1/4																							
	20																								

Cass County, Minnesota, for Taxes for the Year 1962.

SOLD FOR TAXES	VALUATIONS BY SCHOOL DISTRICTS AS EQUALIZED BY DEPARTMENT OF TAXATION						Tax Including State Homestead	State Tax on Non-Homestead	SPECIAL TAXES	SPECIAL TAXES	TOTAL TAXES	PAID	WHEN PAID	Number of Receipt	March Settlement 1963	June Settlement 1963	Penalty	November Settlement 1963	Penalty	Collections to First Monday in January 1964	Penalty	Delinquent on First Monday in January 1964	Total Delinquent Tax and Penalty	REMARKS
	District No.	District No.	District No.	District No.	District No.	District No.																		
	Rate	Rate	Rate	Rate	Rate	Rate																		
	Mills	Mills	Mills	Mills	Mills	Mills																		
	Dollars	Dollars	Dollars	Dollars	Dollars	Dollars	\$ cts.	\$ cts.	\$ cts.	\$ cts.	\$ cts.		Month Day Year		\$ cts.	\$ cts.	\$ cts.	\$ cts.	\$ cts.	\$ cts.	\$ cts.	\$ cts.	\$ cts.	
1																								
2																								
3																								
4																								
5																								
6																								
7																								
8																								
9																								
10																								
11																								
12																								
13																								
14																								
15																								
16																								
17																								
18																								
19																								
20																								

142-29  
143-30  
Fairwood  
Chipewa  
Beech  
Basswood  
Subdivision



Cass County, Minnesota, for Taxes for the Year 1962.

\* Indicate Type of Property: R-Residential, C-Commercial, I-Industrial, U-Utility, F-Farm, L-Lakeshore, T-Timber, M-Mineral

[illegible]

ПОТО



Assessment Roll and Tax List of Real Property in the Town of Unorg. #4  
\* Indicate Type of Property: R-Residential, C-Commercial, I-Industrial, U-Utility, F-Farm, L-Lakeshore, T-Timber, M-Mineral

Form 300 - MILLER-DAVIS CO., MINNEAPOLIS

IN WHOSE NAME ASSESSED		DESCRIPTION OF PROPERTY				No. School District	Indicate Homestead Yes or No	Agri. or Seas. Recr. Yes or No	Indicate Type of Property	TRUE AND FULL VALUATIONS				ASSESSED VALUATIONS									FINAL EQUALIZE VALUE	
		SUBDIVISION	Sec. or Lot	Town or Block	Rng.					Number of Acres of Land	LAND Exclusive of Structures and Improvements	BUILDINGS and Other Structures	MACHINERY Permanently Attached to Real Estate	TOTAL True and Full Value	RURAL		ALL OTHER		MACHINERY Permanently Attached to Real Estate	Seasonal and Recreational Cabins	TOTAL ASSESSED VALUE	Total Assessed Value as Equalized by the Board of Review		
															Homestead Up to \$4,000 20%	Over \$4,000 and Non-Homestead 33 1/3 %	Timber Land Class 3e 20%	Homestead Up to \$4,000 25%						Over \$4,000 and Non-Homestead 40%
U. S. of America	1	NE 1/4 of NE 1/4	35	142	25	118																		
U. S. of America	2	NW 1/4 of NE 1/4																						
U. S. of America	3	SW 1/4 of NE 1/4																						
U. S. of America	4	SE 1/4 of NE 1/4																						
	5																							
U. S. of America	6	NE 1/4 of NW 1/4																						
U. S. of America	7	NW 1/4 of NW 1/4																						
U. S. of America	8	SW 1/4 of NW 1/4																						
U. S. of America	9	SE 1/4 of NW 1/4																						
	10																							
U. S. of America	11	NE 1/4 of SW 1/4																						
U. S. of America	12	NW 1/4 of SW 1/4																						
U. S. of America	13	SW 1/4 of SW 1/4																						
U. S. of America	14	SE 1/4 of SW 1/4																						
	15																							
State of Minnesota	16	NE 1/4 of SE 1/4																						
U. S. of America	17	NW 1/4 of SE 1/4																						
U. S. of America	18	SW 1/4 of SE 1/4																						
U. S. of America	19	SE 1/4 of SE 1/4																						
	20																							

Cass County, Minnesota, for Taxes for the Year 1962.

SOLD FOR TAXES	VALUATIONS BY SCHOOL DISTRICTS AS EQUALIZED BY DEPARTMENT OF TAXATION						Tax Including State Homestead	State Tax on Non-Homestead	SPECIAL TAXES	SPECIAL TAXES	TOTAL TAXES	PAID	WHEN PAID	Number of Receipt	March Settlement 1963	June Settlement 1963	Penalty	November Settlement 1963	Penalty	Collections to First Monday in January 1964	Penalty	Delinquent on First Monday in January 1964	Total Delinquent Tax and Penalty	REMARKS
	District No.	District No.	District No.	District No.	District No.	District No.																		
	Rate	Rate	Rate	Rate	Rate	Rate																		
	Mills	Mills	Mills	Mills	Mills	Mills																		
	Dollars	Dollars	Dollars	Dollars	Dollars	Dollars	\$ cts.	\$ cts.	\$ cts.	\$ cts.	\$ cts.		Month Day Year		\$ cts.	\$ cts.	\$ cts.	\$ cts.	\$ cts.	\$ cts.	\$ cts.	\$ cts.	\$ cts.	
1																								
2																								
3																								
4																								
5																								
6																								
7																								
8																								
9																								
10																								
11																								
12																								
13																								
14																								
15																								
16																								
17																								
18																								
19																								
20																								

142-29  
143-30  
Fairwood  
Chippewa  
Basswood  
Subdivision



**Cass County, Minnesota, for Taxes for the Year 1962.**

\* Indicate Type of Property: R-Residential, C-Commercial, I-Industrial, U-Utility, F-Farm, L-Lakeshore, T-Timber, M-Mineral

A NA

[illegible]



**Cass County, Minnesota, for Taxes for the Year 1962.**

NA

IN WHOSE NAME ASSESSED

[illegible]



## Cass County, Minnesota, for Taxes for the Year 1962.

Form SCD MILLER-DAVIS CO., MINNEAPOLIS

[illegible]



[illegible]



[illegible]



Cass County, Minnesota, for Taxes for the Year 1962.

\* Indicate Type of Property: R-Residential, C-Commercial, I-Industrial, U-Utility, F-Farm, L-Lakeshore, T-Timber, M-Mineral

A NA

[illegible]



Cass County, Minnesota, for Taxes for the Year 1962.

A

[illegible]



Cass County, Minnesota, for Taxes for the Year 1962.

A N

[illegible]



\* Indicate Type of Property: R-Residential, C-Commercial, I-Industrial, U-Utility, F-Farm, L-Lakeshore, T-Timber, M-Mineral

45

[illegible]



## Cass County, Minnesota, for Taxes for the Year 1962.

A

[illegible]







## Cass County, Minnesota, for Taxes for the Year 1962.

A N

SOLD FOR TAXES	VALUATIONS BY SCHOOL DISTRICTS AS EQUALIZED BY DEPARTMENT OF TAXATION						Tax Including State Homestead	State Tax on Non- Homestead	SPECIAL TAXES	SPECIAL TAXES	TOTAL TAXES	PAID	WHEN PAID	Number of Receipt	March Settlement 1963	June Settlement 1963	Penalty	November Settlement 1963	Penalty	Collections to First Monday in January 1964	Penalty	Delinquent on First Monday in January 1964	Total Delinquent Tax and Penalty	REMARKS
	District No.	District No.	District No.	District No.	District No.	District No.																		
	Rate.....	Rate.....	Rate.....	Rate.....	Rate.....	Rate.....																		
	Mills	Mills	Mills	Mills	Mills	Mills																		
1			510				12818	436			13254	1	PAID IN FULL MAY 13 1963	9359		132	54						14064	
2				150			4070	128			4198	2	PAID IN FULL MAY 23 1963	11792		41	98						14076	
3												3												
4												4												
5			349				8772	298			9070	5	PAID IN FULL MAY 31 1963	11270		90	70						13870	
6												6												
7												7												
8												8												
9												9												
10												10												
11				30			814	26			840	11	PAID IN FULL MAY 28, 1963	12044		840							14077	
12												12												
13				27			732	24			756	13	PAID IN FULL MAY 7 1963	8605		756							14081	
14												14												
15				187			5074	160			5234	15	PAID IN FULL MAY 23 1963	11785		5234							14007	
16												16												
17												17												
18												18												
19												19												
20												20												
			859	394 = 1253			21590 10640 32280	1072			33352					33352								







50



[illegible][illegible]



[illegible]



[illegible]



Form 5CD MILLER-DAVIS CO., MINNEAPOLIS

[illegible][illegible]



[illegible]



[illegible]



[illegible]



IN WHOSE NAME ASSESSED	DESCRIPTION OF PROPERTY				No. School District	Indicate Homestead Yes or No	Agricultural or Seasonal Recr. Yes or No	Indicate Type of Property	TRUE AND FULL VALUATIONS				ASSESSED VALUATIONS										FINAL EQUALIZED VALUE		
	SUBDIVISION	Sec. or Lot	Town or Block	Ring.					Number of Acres of Land	LAND Exclusive of Structures and Improvements	BUILDINGS and Other Structures	MACHINERY Permanently Attached to Real Estate	TOTAL True and Full Value	RURAL		ALL OTHER		MACHINERY Permanently Attached to Real Estate	Seasonal and Recreational Cabins	TOTAL ASSESSED VALUE	Total Assessed Value as Equalized by the Board of Review				
														Acres	100ths	Homestead Up to \$4,000 20%	Over \$4,000 and Non-Homestead 33 1/3%					Timber Land Class 3e 20%		Homestead Up to \$4,000 25%	Over \$4,000 and Non-Homestead 40%
	1		NE 1/4 of NE 1/4		15 1/3 30	UN																			
	2		NW 1/4 of NE 1/4																						
	3		SW 1/4 of NE 1/4																						
	4		SE 1/4 of NE 1/4																						
E.H. Hill 1/2 int. + Lorin Solon 1/2 int.	5		GOVT LOT 1		62 50		no	no	L	675 450		675 450		225 150					225 150						
	6		NE 1/4 of NW 1/4																						
	7		NW 1/4 of NW 1/4																						
	8		SW 1/4 of NW 1/4																						
	9		SE 1/4 of NW 1/4																						
	10																								
	11		NE 1/4 of SW 1/4																						
	12		NW 1/4 of SW 1/4																						
	13		SW 1/4 of SW 1/4																						
	14		SE 1/4 of SW 1/4																						
	15																								
	16		NE 1/4 of SE 1/4																						
	17		NW 1/4 of SE 1/4																						
	18		SW 1/4 of SE 1/4																						
	19		SE 1/4 of SE 1/4																						
	20																								
					62 50					450 675		450 675		150 225					150 225						

SOLD FOR TAXES	VALUATIONS BY SCHOOL DISTRICTS AS EQUALIZED BY DEPARTMENT OF TAXATION						Tax Including State Homestead	State Tax on Non- Homestead	SPECIAL TAXES	SPECIAL TAXES	TOTAL TAXES	PAID	WHEN PAID	Number of Receipt	March Settlement 1963	June Settlement 1963	Penalty	November Settlement 1963	Penalty	Collections to First Monday in January 1964	Penalty	Delinquent on First Monday in January 1964	Total Delinquent Tax and Penalty	REMARKS	
	District No.....	District No.....	District No. <i>NA</i>	District No.....	District No.....	District No.....	.....Mills	.....Mills																	
	Rate.....	Rate.....	Rate <i>21</i>	Rate.....	Rate.....	Rate.....	.....Mills	.....Mills																	
	..... Mills	..... Mills	..... Mills	..... Mills	..... Mills	..... Mills																			
	Dollars	Dollars	Dollars	Dollars	Dollars	Dollars	\$ cts.	\$ cts.	\$ cts.	\$ cts.	\$ cts.														
1												1													
2												2													
3												3													
4												4													
5			225				6106	192			6298	5	PAID IN FULL MAY 31 1963	11261		6298							14671		
6												6													
7												7													
8												8													
9												9													
10												10													
11												11													
12												12													
13												13													
14												14													
15												15													
16												16													
17												17													
18												18													
19												19													
20			225				6106	192			6298	20					6298								



[illegible]







SOLD FOR TAXES	VALUATIONS BY SCHOOL DISTRICTS AS EQUALIZED BY DEPARTMENT OF TAXATION						Tax Including State Homestead	State Tax on Non- Homestead	SPECIAL TAXES	SPECIAL TAXES	TOTAL TAXES		PAID	WHEN PAID	Number of Receipt	March Settlement 1963	June Settlement 1963	Penalty	November Settlement 1963	Penalty	Collections to First Monday in January 1964	Penalty	Delinquent on First Monday in January 1964	Total Delinquent Tax and Penalty	REMARKS
	District No.....	District No.....	District No.....	District No.....	District No.....	District No.....																			
	Rate.....	Rate.....	Rate.....	Rate.....	Rate.....	Rate.....																			
	..... Mills	..... Mills	..... Mills	..... Mills	..... Mills	..... Mills	..... Mills	..... Mills	..... Mills	..... Mills	..... Mills														
Dollars	Dollars	Dollars	Dollars	Dollars	Dollars	\$ cts.	\$ cts.	\$ cts.	\$ cts.	\$ cts.		Month	Day	Year		\$ cts.	\$ cts.	\$ cts.	\$ cts.	\$ cts.	\$ cts.	\$ cts.	\$ cts.	\$ cts.	
												1													
												2													
												3													
												4													
			165				4478	140			4618	5	PAID IN FULL	MAY 31 1963	11256		4618							14697	
												6													
												7													
												8													
												9													
												10													
												11													
												12													
												13													
												14													
												15													
												16													
												17													
												18													
												19													
												20													
			165				4478	140			4618						4618								



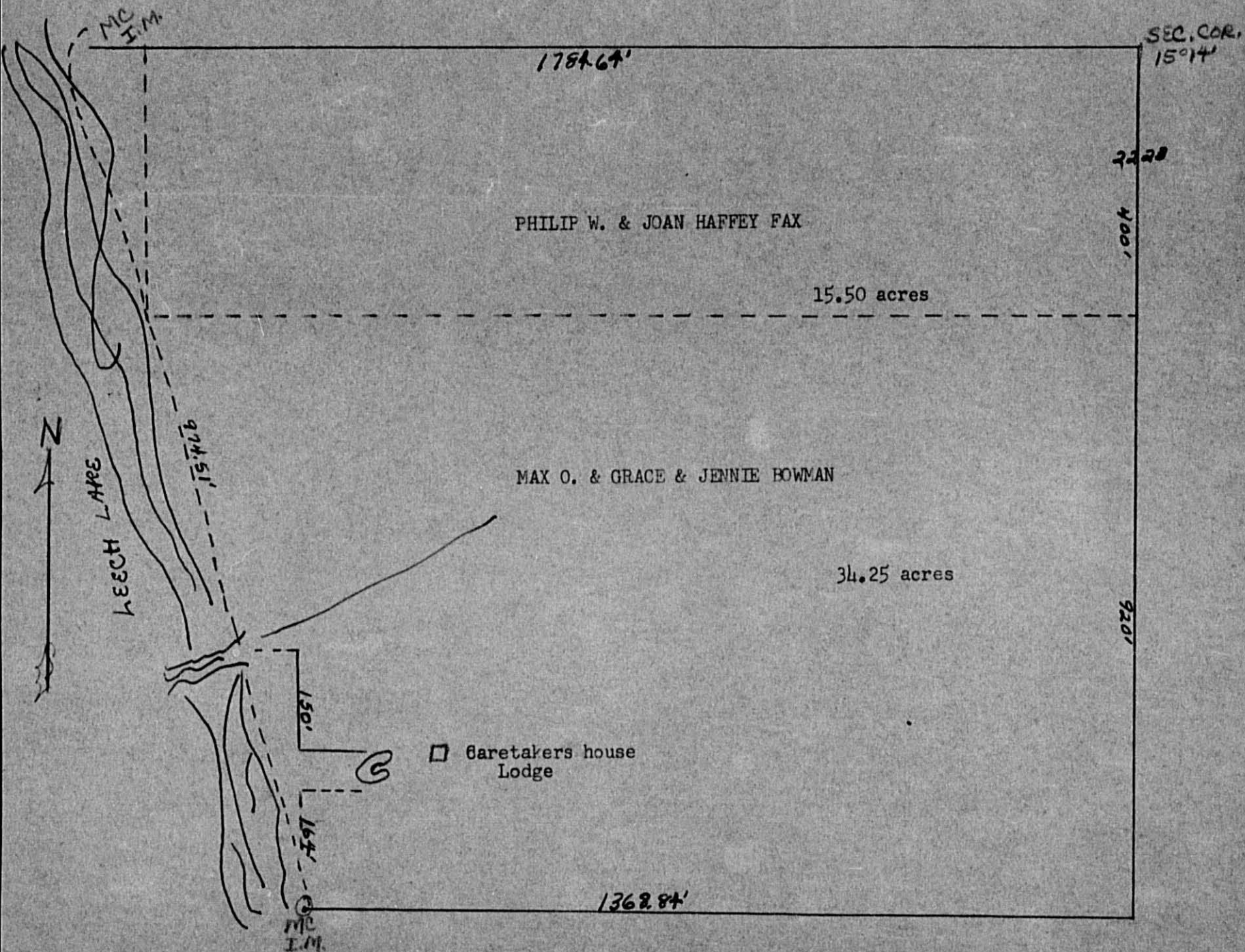
\* Indicate Type of Property: R-Residential, C-Commercial, I-Industrial, U-Utility, F-Farm, L-Lakeshore, T-Timber, M-Mineral

142-29  
143-30

Fairwood	Chippewa Beach	Basswood Subdivision
----------	----------------	----------------------



GOV'T LOT 1 - SEC. 22-143-30





\* Indicate Type of Property: R-Residential, C-Commercial, I-Industrial, U-Utility, F-Farm, L-Lakeshore, T-Timber, M-Mineral

63



## 64

[illegible]







SOLD FOR TAXES	VALUATIONS BY SCHOOL DISTRICTS AS EQUALIZED BY DEPARTMENT OF TAXATION						Tax Including State Homestead Mills	State Tax on Non- Homestead Mills	SPECIAL TAXES	SPECIAL TAXES	TOTAL TAXES	PAID	WHEN PAID	Number of Receipt	March Settlement 1963	June Settlement 1963	Penalty	November Settlement 1963	Penalty	Collections to First Monday in January 1964	Penalty	Delinquent on First Monday in January 1964	Total Delinquent Tax and Penalty	REMARKS
	District No.....	District No.....	District No.....	District No.....	District No.....	District No.....																		
	Rate.....	Rate.....	Rate.....	Rate.....	Rate.....	Rate.....																		
	Mills	Mills	Mills	Mills	Mills	Mills																		
1																								
2																								
3																								
4																								
5			250					6556	214			6770	PAID IN FULL APR 20 1963	8160		6770								14092
6																								
7																								
8																								
9																								
10																								
11																								
12																								
13																								
14																								
15																								
16																								
17																								
18																								
19																								
20																								
			250					6556	214			6770				6770								

Fairwood	Chippewa Beach	Basswood Subdivision
----------	-------------------	-------------------------







[illegible]



[illegible][illegible]



\* Indicate Type of Property: R-Residential, C-Commercial, I-Industrial, U-Utility, F-Farm, L-Lakeshore, T-Timber, M-Mineral

\* Indicate Type of Property: R-Residential, C-Commercial, I-Industrial, U-Utility, F-Farm, L-Lakeshore, T-Timber, M-Mineral

SOLD FOR TAXES		VALUATIONS BY SCHOOL DISTRICTS AS EQUALIZED BY DEPARTMENT OF TAXATION						Tax Including State Homestead Mills	State Tax on Non-Homestead Mills	SPECIAL TAXES	SPECIAL TAXES	TOTAL TAXES	PAID	WHEN PAID	Number of Receipt	March Settlement 1963	June Settlement 1963	Penalty	November Settlement 1963	Penalty	Collections to First Monday in January 1964	Penalty	Delinquent on First Monday in January 1964	Total Delinquent Tax and Penalty	REMARKS	
		District No.	District No.	District No.	District No.	District No.	District No.																			
		Rate	Rate	Rate	Rate	Rate	Rate																			
		Mills	Mills	Mills	Mills	Mills	Mills																			
1	SOLD FOR TAXES				45			1570	38			1608	1 PAID IN FULL	MAY 16 1963	11423		1608									15923
2					45			1570	38			1608	2 PAID IN FULL	MAY 3 1963	5306		1608									14052
3					45			1570	38			1608	3 PAID IN FULL	MAY 16 1963	11423		1608									14062
4				180				5828	154			5982	4 PAID IN FULL	MAY 31 1963	11253		5982									14053
5					16			558	14			572	5 PAID IN FULL	MAY 16 1963	11423		572									14062
6				195				6314	166			6480	6 PAID IN FULL	MAY 10 1963	11661		6480									14060
7					4261			9104				9104	7 PAID IN FULL	MAY 16 1963	11423		9104									14062
8				430				13924	368			14292	8 PAID IN FULL	FEB 14 1963	1870	14292										14054
9				525				17000	448			17448	9 PAID IN FULL	MAY 31 1963	11271		8724									14056
10																										
11																										
12																										
13																										
14																										
15																										
16																										
17																										
18																										
19																										
20																										
				1330	4261			43066	1264			58702					14292	35686		8724						
				151				14372																		
				412	1742			57438																		



Assessment Roll and Tax List of Real Property in the Town of Unorg. # 4  
\* Indicate Type of Property: R-Residential, C-Commercial, I-Industrial, U-Utility, F-Farm, L-Lakeshore, T-Timber, M-Mineral

Form 50 MILLER-DAVIS CO., MINNEAPOLIS

Cass County, Minnesota, for Taxes for the Year 1962.

IN WHOSE NAME ASSESSED	DESCRIPTION OF PROPERTY				No. School District	Indicate Homestead Yes or No	Agricult. or Seasonal Recr. Yes or No	Indicate Type of Property	TRUE AND FULL VALUATIONS				ASSESSED VALUATIONS										FINAL EQUALIZED VALUE	
	SUBDIVISION	Sec. or Lot	Town or Block	Rng.					Number of Acres of Land	LAND Exclusive of Structures and Improvements +5000 Dollars	BUILDINGS and Other Structures +5690 Dollars	MACHINERY Permanently Attached to Real Estate Dollars	TOTAL True and Full Value Dollars	RURAL		ALL OTHER				MACHINERY Permanently Attached to Real Estate Dollars	Seasonal and Recreational Cabins Dollars	TOTAL ASSESSED VALUE Dollars		Total Assessed Value as Equalized by the Board of Review Dollars
														Homestead Up to \$4,000 20%	Over \$4,000 and Non-Homestead 33 1/3%	Timber Land Class 3e 20%	Homestead Up to \$4,000 25%	Over \$4,000 and Non-Homestead 40%						
Basswood Subdivision				Acres	100ths																			
7.91 ACS. of Govt Lot 4 - Sec. 1-143-30																								
Lon V. + Lillian J. Ivins	1	1			115	No	No	L	112 75			112 75		37 25					37 25					
" " "	2	2				No	"	"	112 75			112 75		37 25					37 25					
" " "	3	3				No	"	"	112 75			112 75		37 25					37 25					
" " "	4	4				No	"	"	112 75			112 75		37 25					37 25					
" " "	5	5				No	"	"	112 75			112 75		37 25					37 25					
W. P. Carr	6	6				No	No	L	112 75			112 75		37 25					37 25					
" " "	7	7				No	No	"	112 75			112 75		37 25					37 25					
" " "	8	8				No	No	"	112 75			112 75		37 25					37 25					
" " "	9	9				No	"	"	112 75			112 75		37 25					37 25					
A. E. + Luella Swoboda	10	10				No	"	"	112 75			112 75		37 25					37 25					
	11																							
	12																							
	13																							
	14																							
	15																							
	16																							
	17																							
	18																							
	19																							
	20																							
									750			750		370					250					
									1120			1120		370					370					

SOLD FOR TAXES	VALUATIONS BY SCHOOL DISTRICTS AS EQUALIZED BY DEPARTMENT OF TAXATION						Tax Including State Homestead		State Tax on Non-Homestead	SPECIAL TAXES	SPECIAL TAXES	TOTAL TAXES	PAID	WHEN PAID	Number of Receipt	March Settlement 1963	June Settlement 1963	Penalty	November Settlement 1963	Penalty	Collections to First Monday in January 1964	Penalty	Delinquent on First Monday in January 1964	Total Delinquent Tax and Penalty	REMARKS	
	District No.	District No.	District No.	District No.	District No.	District No.																				
	Rate	Rate	Rate	Rate	Rate	Rate																				
	Mills	Mills	Mills	Mills	Mills	Mills																				
Dollars	Dollars	Dollars	Dollars	Dollars	Dollars	\$	cts.	\$	cts.	\$	cts.	\$	cts.	Month	Day	Year	\$	cts.	\$	cts.	\$	cts.	\$	cts.	\$	cts.
1			37				1292	30			1322	1	PAID IN FULL	MAY	9	1963		1322							15924	
2			37				1292	30			1322	2	PAID IN FULL	MAY	20	1963		1322								
3			37				1292	30			1322	3	PAID IN FULL	MAY	20	1963		1322								
4			37				1292	30			1322	4	PAID IN FULL	MAY	20	1963		1322								
5			37				1292	30			1322	5	PAID IN FULL	MAY	20	1963		1322								
6			37				1290	32			1322	6	PAID IN FULL	APR	20	1963									15925	
7			37				1290	32			1322	7	PAID IN FULL	APR	20	1963		5288								
8			37				1290	32			1322	8	PAID IN FULL	APR	20	1963										
9			37				1290	32			1322	9	PAID IN FULL	APR	20	1963										
10			37				1290	32			1322	10	PAID IN FULL	MAY	20	1963		1322							14007	
11												11														
12												12														
13												13														
14												14														
15												15														
16												16														
17												17														
18												18														
19												19														
20												20														
			370				12910	310			13220															



\* Indicate Type of Property: R-Residential, C-Commercial, I-Industrial, U-Utility, F-Farm, L-Lakeshore, T-Timber, M-Mineral

NA A NA A NA A NA A  
VALUATIONS BY SCHOOL DISTRICTS AS  
EQUALIZED BY DEPARTMENT OF TAXATION #15 #119

## 77

[illegible]