

ASSESSMENT & TAX LIST - 1957

Turtle Lake



REAL PROPERTY BECOMING SUBJECT TO TAXATION SINCE THE LAST PREVIOUS ASSESSMENT OR OMITTED FROM ASSESSMENT ROLLS THE PREVIOUS YEARS.

Assessment of Taxable Real Property in the \_\_\_\_\_ of \_\_\_\_\_, Minn., for the Year 1957.

\* Indicate Type of Property: R-Residential, C-Commercial, I-Industrial, U-Utility, F-Farm, L-Lakeshore, T-Timber, M-Mineral

NAME OF OWNER	SCHOOL DISTRICT	DESCRIPTION OF PROPERTY						Indicating Agricultural Use	Indicating Homestead	Indicating Property	BY WHOM VALUED	TRUE AND FULL VALUATIONS					ASSESSED VALUATIONS					FINAL EQUALIZED VALUE	
		SUBDIVISION	Sec. or Lot	Twp. or Block	King.	Number of Acres of Land	Acres					10ths	LAND Exclusive of Structures and Improvements	BUILDINGS and Other Structures	MACHINERY Permanently Attached to Real Estate	TOTAL True and Full Value	RURAL		ALL OTHER		MACHINERY Permanently Attached to Real Estate		TOTAL ASSESSED VALUE
											Dollars	Dollars	Dollars	Dollars	Dollars	Dollars	Dollars	Dollars	Dollars	Dollars	Dollars	Dollars	Dollars
											Dollars	Dollars	Dollars	Dollars	Dollars	Dollars	Dollars	Dollars	Dollars	Dollars	Dollars	Dollars	Dollars

Total No. of Acres \_\_\_\_\_

Total Value as Equalized by \_\_\_\_\_

Total Value as Assessed by \_\_\_\_\_

### SUMMARY OF TAX COLLECTION

Original Levy	\$ 15,856.46
Additions	\$ 42.66
	<u>\$ 15,899.12</u>
Abatements	\$ 343.12
	<u>\$ 15,556.00</u>

#### COLLECTIONS

March Settlement	\$ 3182.24		22.39
June Settlement	\$ 7740.36		
November Settlement	\$ 3282.40		
January Settlement	\$ 647.96	\$ 14,852.96	
Over Collected	\$ 22.39		
Under Collected	\$ _____		
Delinquent	\$ 725.43		
Total	\$ 15,556.00		

Real Estate

112-30

Bush's Point

King's Green Shores

Rocky Point













Assessment Roll and Tax List of Real Property in the Town of Turtle Lake

Cass County, Minnesota, for Taxes for the Year 1957.

Table with columns: IN WHOSE NAME ASSESSED, TO WHOM TRANSFERRED, DESCRIPTION OF PROPERTY, TRUE AND FULL VALUATIONS, ASSESSED VALUATIONS, VALUATIONS BY SCHOOL DISTRICTS AS EQUALIZED BY DEPARTMENT OF TAXATION, TAXES, PAID, WHEN PAID, Number of Receipts, March Settlement 1958, June Settlement 1958, November Settlement 1958, Collections to First Monday in January 1959, Delinquent on First Monday in January 1959, Total Delinquent Tax and Penalty, REMARKS.





Assessment Roll and Tax List of Real Property in the Town of Turtle Lake

Cass County, Minnesota, for Taxes for the Year 1957.

Table with columns for IN WHOSE NAME ASSESSED, TO WHOM TRANSFERRED, DESCRIPTION OF PROPERTY, TRUE AND FULL VALUATIONS, ASSESSED VALUATIONS, VALUATIONS BY SCHOOL DISTRICTS AS EQUALIZED BY DEPARTMENT OF TAXATION, and TAXES. Includes handwritten entries for property owners like Clifford J. Thompson & Geo. W. Munson and Paul B. & Lillian Hansen.

Bush's Point

11-2-30

King's Green Shores

Rocky Point

PERSONAL



Assessment Roll and Tax List of Real Property in the Town of Turtle Lake

Cass County, Minnesota, for Taxes for the Year 1957.

Form 307 (1956) ILLINOIS COUNTY, ILLINOIS. Indicate Type of Property: R-Residential, C-Commercial, I-Industrial, U-Utility, F-Farm, L-Lakeshore, T-Timber, M-Mineral

Table with columns: IN WHOSE NAME ASSESSED, TO WHOM TRANSFERRED, SUBDIVISION, TRUE AND FULL VALUATIONS, ASSESSED VALUATIONS, and FINAL EQUALIZED VALUE.

(Continued on next page)

Table with columns: VALUATIONS BY SCHOOL DISTRICTS AS EQUALIZED BY DEPARTMENT OF TAXATION, TAX INCLUDING STATE, SPECIAL TAXES, TOTAL TAXES, PAID, WHEN PAID, and REMARKS.

Vertical text on the right edge: Bush's Point, King's Green Shores, Rocky Point.













Assessment Roll and Tax List of Real Property in the Town of Little Lake

Cass County, Minnesota, for Taxes for the Year 1957.

\* Indicate Type of Property: R-Residential, C-Commercial, I-Industrial, U-Utality, F-Farm, L-Lakeshore, T-Timber, M-Mineral

Form 300 (36)

IN WHOSE NAME ASSESSED	TO WHOM TRANSFERRED	DESCRIPTION OF PROPERTY		TRUE AND FULL VALUATIONS							ASSESSED VALUATIONS					Total Assessed Value as Equalized by the Board of Review	FINAL EQUALIZED VALUE	
		SUBDIVISION	Sec. or Lot	Town or Block	Kog.	Number of Acres of Land	Machinery Permanently Attached to Real Estate	BUILDINGS and Other Structures and Improvements	LAND Exclusive of Structures and Improvements	RURAL			ALL OTHER		TOTAL ASSESSED VALUE			
										Acres	Hundredths	20%	Over \$4,000 and Non-Homestead 33 1/3%	Timber Land Class 3e 20%				Homestead Up to \$1,000 25%
<i>Frank J. &amp; Kathleen J. Sell</i>		NE 1/4 of NE 1/4				4.0												
<i>U. S. of America</i>		NW 1/4 of NW 1/4				4.0												
<i>Klass. Bakker</i>		SW 1/4 of NW 1/4				4.0												
<i>Apel Skarne</i>		SE 1/4 of NW 1/4				4.0												
<i>Oscar Christopherson</i>		NE 1/4 of SW 1/4				4.0												
<i>State of Minnesota</i>		NW 1/4 of SW 1/4				4.0												
<i>Oscar Christopherson</i>		SW 1/4 of SW 1/4				4.0												
<i>State of Minnesota</i>		SE 1/4 of SW 1/4				4.0												
<i>Signe + Barbara Skarne</i>		NE 1/4 of SE 1/4				1.0												
<i>U. S. of America</i>		NW 1/4 of SE 1/4																
<i>U. S. of America</i>		SW 1/4 of SE 1/4																
<i>U. S. of America</i>		SE 1/4 of SE 1/4																
												330						

SOLD FOR TAXES	VALUATIONS BY SCHOOL DISTRICTS AS EQUALIZED BY DEPARTMENT OF TAXATION						Tax including State Homestead	State Tax on Non-Homestead	SPECIAL TAXES	TOTAL TAXES	PAID	WHEN PAID	Number of Receipt	March Settlement 1958	June Settlement 1958	Penalty	November Settlement 1958	Penalty	Collections to First Monday in January 1959	Penalty	Delinquent on First Monday in January 1959	Total Delinquent Tax and Penalty	REMARKS			
	District No.	District No.	District No.	District No.	District No.	District No.																				
	Rate	Rate	Rate	Rate	Rate	Rate																				
						82			1980																	
						44			1064																	
						41			990																	
						44			1064																	
						247			5966																	
						31			748																	
						44			7062																	
						38			918																	
						51			1232																	
						44			1062																	
						40		26	1992																	
												666														
												702														
									17052																	
									17052																	

Bush's Point

11-30

King's Green Shares

Rocky Point



Assessment Roll and Tax List of Real Property in the Town of Turtle Lake

Cass County, Minnesota, for Taxes for the Year 1957.

IN WHOSE NAME ASSESSED		TO WHOM TRANSFERRED	DESCRIPTION OF PROPERTY					TRUE AND FULL VALUATIONS					ASSESSED VALUATIONS							SOLD FOR TAXES		VALUATIONS BY SCHOOL DISTRICTS AS EQUALIZED BY DEPARTMENT OF TAXATION													REMARKS												
			SUBDIVISION	Sec. or Lot	Town or Block	Reg.	Number of Acres of Land	LAND Exclusive of Structures and Improvements	BUILDINGS and Other Structures	MACHINERY Permanently Attached to Real Estate	TOTAL True and Full Value	RURAL	ALL OTHER	MACHINERY Permanently Attached to Real Estate	TOTAL ASSESSED VALUE	Total Assessed Value as Equalized by the Board of Review	FINAL EQUALIZED VALUE	District No.	District No.	District No.	District No.	District No.	District No.	Tax Including State Homestead	State Tax on Non-Homestead	SPECIAL TAXES	TOTAL TAXES	PAID	WHEN PAID	Number of Receipt	March Settlement 1958	June Settlement 1958	Penalty	November Settlement 1958	Penalty	Collection to First Monday in January 1959	Penalty	Delinquent on First Monday in January 1959	Total Delinquent Tax and Penalty								
							Acres 100ths	Dollars	Dollars	Dollars	Dollars	Dollars	Dollars	Dollars	Dollars	Dollars	Dollars	No.	No.	No.	No.	No.	No.	\$ cts.	\$ cts.	\$ cts.	\$ cts.	Month	Day	Year	\$ cts.	\$ cts.	\$ cts.	\$ cts.	\$ cts.	\$ cts.	\$ cts.	\$ cts.									
U. S. of America			NE 1/4 of NE 1/4	16	141	30	5																																								
U. S. of America			NW 1/4 of NE 1/4	2																																											
U. S. of America			SW 1/4 of NE 1/4	3																																											
U. S. of America			SE 1/4 of NE 1/4	4																																											
U. S. of America				5																																											
State of Minnesota			NE 1/4 of NW 1/4	6																																											
U. S. of America			NW 1/4 of NW 1/4	7																																											
U. S. of America			SW 1/4 of NW 1/4	8																																											
U. S. of America			SE 1/4 of NW 1/4	9																																											
U. S. of America				10																																											
U. S. of America			NE 1/4 of SW 1/4	11																																											
			NW 1/4 of SW 1/4	12																																											
			SW 1/4 of SW 1/4	13																																											
			SE 1/4 of SW 1/4	14																																											
U. S. of America				15																																											
			NE 1/4 of SE 1/4	16																																											
			NW 1/4 of SE 1/4	17																																											
			SW 1/4 of SE 1/4	18																																											
State of Minnesota			SE 1/4 of SE 1/4	19																																											
U. S. of America				20																																											

Real 11-30

Bush's Point

11-30

King's Green Shores

Rocky Point



Assessment Roll and Tax List of Real Property in the Town of South Lake, Cass County, Minnesota, for Taxes for the Year 1957.

Cass County, Minnesota, for Taxes for the Year 1957.

Real 11-30

Brush's Point

11-30

King's Green Acres

Rocky Point

Table with columns: IN WHOSE NAME ASSESSED, TO WHOM TRANSFERRED, DESCRIPTION OF PROPERTY, TRUE AND FULL VALUATIONS, ASSESSED VALUATIONS, VALUATIONS BY SCHOOL DISTRICTS AS EQUALIZED BY DEPARTMENT OF TAXATION, TAXES, PAID, WHEN PAID, Number of Receipts, March Settlement 1958, June Settlement 1958, November Settlement 1958, Collections to First Monday in January 1959, Delinquent on First Monday in January 1959, Total Delinquent Tax and Penalty, REMARKS.

(Continued on next page) 55492













Assessment Roll and Tax List of Real Property in the Town of Little Lake

Cass County, Minnesota, for Taxes for the Year 1957.

Form BCD (56) DULUTH-BELLEVUE COMPANY, MINNEAPOLIS, MINN. \* Indicate Type of Property: R-Residential, C-Commercial, I-Industrial, U-Utility, F-Farm, L-Lakeshore, T-Timber, M-Mineral

Table with columns: IN WHOSE NAME ASSESSED, TO WHOM TRANSFERRED, DESCRIPTION OF PROPERTY, TRUE AND FULL VALUATIONS, ASSESSED VALUATIONS, VALUATIONS BY SCHOOL DISTRICTS AS EQUALIZED BY DEPARTMENT OF TAXATION, TAXES, PAID, WHEN PAID, and REMARKS. Rows 1-20 list property parcels with details on valuations and taxes.

11-30 Real

11-30 King's Point King's Green Stores Rocky Point

Assessment Roll and Tax List of Real Property in the Town of LITTLE LAKE

Cass County, Minnesota, for Taxes for the Year 1957.

Indicate Type of Property: R-Residential, C-Commercial, I-Industrial, U-Utility, F-Farm, L-Lakeshore, T-Timber, M-Mineral

Table with columns: IN WHOSE NAME ASSESSED, TO WHOM TRANSFERRED, DESCRIPTION OF PROPERTY, TRUE AND FULL VALUATIONS, ASSESSED VALUATIONS, VALUATIONS BY SCHOOL DISTRICTS AS EQUALIZED BY DEPARTMENT OF TAXATION, SOLD FOR TAXES, PAID, WHEN PAID, Number of Receipt, March Settlement 1958, June Settlement 1958, Penalty Settlement 1958, Collections to First Monday in January 1959, Delinquent on First Monday in January 1959, Total Delinquent Tax and Penalty, REMARKS.

Real 111-30

Bush's Point

112-30

King's Green Shores

Rocky Point

Assessment Roll and Tax List of Real Property in the Town of Turtle Lake

Cass County, Minnesota, for Taxes for the Year 1957.

Indicate Type of Property: R-Residential, C-Commercial, I-Industrial, U-Utility, F-Farm, L-Lake Shore, T-Timber, M-Mine and

Table with columns for: IN WHOSE NAME ASSESSED, TO WHOM TRANSFERRED, DESCRIPTION OF PROPERTY, TRUE AND FULL VALUATIONS, ASSESSED VALUATIONS, VALUATIONS BY SCHOOL DISTRICTS AS EQUALIZED BY DEPARTMENT OF TAXATION, SOLD FOR TAXES, PAID, WHEN PAID, SPECIAL TAXES, TOTAL TAXES, and REMARKS.

Real 112-30

Bush's Point King's Green Shores Rocky Point





Assessment Roll and Tax List of Real Property in the town of Jurtle Lake

\* Indicate Type of Property: R-Residential, C-Commercial, I-Industrial, U-Utility, F-Farm, L-Lakeshore, T-Timber, M-Mineral

Form 5CD (5-57) 1957-58

Cass County, Minnesota, for Taxes for the Year 1957.

IN WHOSE NAME ASSESSED	TO WHOM TRANSFERRED	DESCRIPTION OF PROPERTY													ASSESSED VALUATIONS															VALUATIONS BY SCHOOL DISTRICTS AS EQUALIZED BY DEPARTMENT OF TAXATION																	SOLD FOR TAXES	REMARKS
		SUBDIVISION	Sec. of Lot	Town or Block	Rng.	Number of Acres of Land		No. School District	Indicate Homestead or No.	Indicate Agricultural Tax or No.	Indicate Type of Property	TRUE AND FULL VALUATIONS				ASSESSED VALUATIONS					FUNDING BY SCHOOL DISTRICTS AS EQUALIZED BY DEPARTMENT OF TAXATION						SPECIAL TAXES	TOTAL TAXES	PAID	WHEN PAID	Number of Receipts	March Settlement 1958	June Settlement 1958	November Settlement 1958	Collections to First Monday in January 1959	Penalty	Delinquent on First Monday in January 1959	Total Delinquent Tax and Penalty										
						LAND Exclusive of Structures and Improvements	BUILDINGS and Other Structures					MACHINERY Permanently Attached to Real Estate	TOTAL True and Full Value	RURAL		Machinery Permanently Attached to Real Estate	TOTAL ASSESSED VALUE	Total Assessed Value as Equalized by the Board of Review	FINAL EQUALIZED VALUE	District		Tax including State Homestead	State Tax on Non-Homestead	March Settlement 1958	June Settlement 1958	November Settlement 1958													Collections to First Monday in January 1959	Penalty	Delinquent on First Monday in January 1959	Total Delinquent Tax and Penalty						
														Homestead Up to \$4,000 20%	Over \$4,000 and Non-Homestead 33 1/3%					Timber Land Class 3e 20%	Homestead Up to \$4,000 20%																						Over \$4,000 and Non-Homestead 33 1/3%	Other	No.	No.		
Dollars	Dollars	Dollars	Dollars	Dollars	Dollars	Dollars	Dollars	Dollars	Dollars	Dollars	Dollars	Dollars	Dollars	Dollars	Dollars	Dollars	Dollars	Dollars	Dollars	Dollars	Dollars	Dollars	Dollars	Dollars	Dollars	Dollars	Dollars	Dollars	Dollars	Dollars	Dollars	Dollars	Dollars															
U. S. of America		1	NE 1/4 of NE 1/4			127 141 30																																										
U. S. of America		2	NW 1/4 of NE 1/4																																													
U. S. of America		3	SW 1/4 of NE 1/4																																													
U. S. of America		4	SE 1/4 of NE 1/4																																													
U. S. of America		5																																														
U. S. of America		6	NE 1/4 of NW 1/4																																													
U. S. of America		7	NW 1/4 of NW 1/4																																													
U. S. of America		8	SW 1/4 of NW 1/4																																													
U. S. of America		9	SE 1/4 of NW 1/4																																													
U. S. of America		10																																														
U. S. of America		11	NE 1/4 of SW 1/4																																													
U. S. of America		12	NW 1/4 of SW 1/4																																													
U. S. of America		13	SW 1/4 of SW 1/4																																													
U. S. of America		14	SE 1/4 of SW 1/4																																													
U. S. of America		15																																														
U. S. of America		16	NE 1/4 of SE 1/4																																													
U. S. of America		17	NW 1/4 of SE 1/4																																													
U. S. of America		18	SW 1/4 of SE 1/4																																													
U. S. of America		19	SE 1/4 of SE 1/4																																													
U. S. of America		20																																														

Real 111-30

Bush's Point

111-30

King's Green Shores

Rocky Point

111-30

Assessment Roll and Tax List of Real Property in the Township of South Lake

Indicate Type of Property: R-Residential, C-Commercial, I-Industrial, U-Utility, F-Farm, L-Lakeshore, T-Timber, M-Mineral

IN WHOSE NAME ASSESSED	TO WHOM TRANSFERRED	DESCRIPTION OF PROPERTY				No. School District	Indicate Homestead Yes or No	Indicate Agricultural Yes or No	Indicate Type of Property	TRUE AND FULL VALUATIONS						TOTAL ASSESSED VALUE	Total Assessed Value as Equalized by the Board of Review	FINAL EQUALIZED VALUE	
		SUBDIVISION	Sec. or Lot	Town or Block	Rng.					Number of Acres of Land	MACHINERY Permanently Attached to Real Estate	RURAL		ALL OTHER					MACHINERY Permanently Attached to Real Estate
												LAND Exclusive of Structures and Improvements	BUILDINGS and Other Structures	Homestead Up to \$4,000 20%	Over \$4,000 and Non-Homestead 33 1/3%				
State of Minnesota		NE 1/4 of NE 1/4				28 141 30	5												
State of Minnesota		NW 1/4 of NE 1/4																	
U. S. of America		SW 1/4 of NE 1/4																	
U. S. of America		SE 1/4 of NE 1/4																	
U. S. of America		NE 1/4 of NW 1/4																	
U. S. of America		NW 1/4 of NW 1/4																	
U. S. of America		SW 1/4 of NW 1/4																	
U. S. of America		SE 1/4 of NW 1/4																	
U. S. of America		NE 1/4 of SW 1/4																	
U. S. of America		NW 1/4 of SW 1/4																	
U. S. of America		SW 1/4 of SW 1/4																	
U. S. of America		SE 1/4 of SW 1/4																	
U. S. of America		NE 1/4 of SE 1/4																	
U. S. of America		NW 1/4 of SE 1/4																	
U. S. of America		SW 1/4 of SE 1/4																	
U. S. of America		SE 1/4 of SE 1/4																	

Cass County, Minnesota, for Taxes for the Year 1957.

SOLD FOR TAXES	VALUATIONS BY SCHOOL DISTRICTS AS EQUALIZED BY DEPARTMENT OF TAXATION						Tax Including State Homestead	State Tax on Non-Homestead	SPECIAL TAXES	TOTAL TAXES	PAID	WHEN PAID	Number of Receipt	March Settlement 1958	June Settlement 1958	Penalty	November Settlement 1958	Penalty	Collections to First Monday in January 1959	Penalty	Delinquent on First Monday in January 1959	Total Delinquent Tax and Penalty	REMARKS
	District No.	District No.	District No.	District No.	District No.	District No.																	
	Rate	Rate	Rate	Rate	Rate	Rate																	
1																							
2																							
3																							
4																							
5																							
6																							
7																							
8																							
9																							
10																							
11																							
12																							
13																							
14																							
15																							
16																							
17																							
18																							
19																							
20																							

Real 11-30

Bush's Point

11-2-30

King's Green Shores

Rocky Point



Assessment Roll and Tax List of Real Property in the *Town* of *Justus Lake*

Cass County, Minnesota, for Taxes for the Year 1957.

Form 300 (56) (REV. 5-1-54) (UNOFFICIAL) Indicate Type of Property: R-Residential, C-Commercial, I-Industrial, U-Utility, F-Farm, L-Lakeshore, T-Timber, M-Mineral

Table with columns for IN WHOSE NAME ASSESSED, TO WHOM TRANSFERRED, DESCRIPTION OF PROPERTY, TRUE AND FULL VALUATIONS, ASSESSED VALUATIONS, VALUATIONS BY SCHOOL DISTRICTS AS EQUALIZED BY DEPARTMENT OF TAXATION, Tax Including State Homestead, State Tax on Non-Homestead, SPECIAL TAXES, TOTAL TAXES, PAID, WHEN PAID, Number of Receipt, March Settlement 1958, June Settlement 1958, Penalty, November Settlement 1958, Penalty, Collections to First Monday in January 1959, Penalty, Delinquent on First Monday in January 1959, Total Delinquent Tax and Penalty, REMARKS.

Real 111-30

Real 111-30

King's Green Shores

Rocky Point

111-30

Assessment Roll and Tax List of Real Property in the Town of Seattle Lake

Cass County, Minnesota, for Taxes for the Year 1957.

Form SCD (56) Indicate Type of Property: R-Residential, C-Commercial, I-Industrial, U-Utility, F-Farm, L-Lakeshore, T-Timber, M-Mineral

Table with columns: IN WHOSE NAME ASSESSED, TO WHOM TRANSFERRED, DESCRIPTION OF PROPERTY, TRUE AND FULL VALUATIONS, ASSESSED VALUATIONS, TAXES, PAID, WHEN PAID, etc. Includes handwritten entries for various property owners like H.W. & Edith M. Jensen, Albert Thomas, etc.

(Continued on next page)

Bush's Point, King's Green Shores, Rocky Point









Assessment Roll and Tax List of Real Property in the Town of Turtle Lake

Cass County, Minnesota, for Taxes for the Year 1957.

Table with columns for IN WHOSE NAME ASSESSED, TO WHOM TRANSFERRED, DESCRIPTION OF PROPERTY, TRUE AND FULL VALUATIONS, ASSESSED VALUATIONS, VALUATIONS BY SCHOOL DISTRICTS AS EQUALIZED BY DEPARTMENT OF TAXATION, and TAXES. Includes sub-columns for RURAL, ALL OTHER, and various tax rates.

112-30 Real

Bush's Point

112-30

King's Green Shores

Rocky Point

Assessment Roll and Tax List of Real Property in the *town* of *Little Lake*

*Indicate Type of Property: R-Residential, C-Commercial, I-Industrial, U-Utility, F-Farm, L-Lakeshore, T-Timber, M-Mineral*

Cass County, Minnesota, for Taxes for the Year 1957.

IN WHOSE NAME ASSESSED	TO WHOM TRANSFERRED	DESCRIPTION OF PROPERTY						TRUE AND FULL VALUATIONS											SOLD FOR TAXES	VALUATIONS BY SCHOOL DISTRICTS AS EQUALIZED BY DEPARTMENT OF TAXATION						PAID	WHEN PAID	Number of Receipt	March Settlement 1958	June Settlement 1958	November Settlement 1958	Penalty	Collection to First Monday in January 1959	Penalty	Delinquent on First Monday in January 1959	Total Delinquent Tax and Penalty	REMARKS																		
		SUBDIVISION	Sec. or Lot	Town or Block	Rng.	Number of Acres of Land	No. School District	Indicate Type of Property	LAND EXCLUSIVE OF STRUCTURES AND IMPROVEMENTS	BUILDINGS AND OTHER STRUCTURES	MACHINERY PERMANENTLY ATTACHED TO REAL ESTATE	TOTAL True and Full Value	RURAL			ALL OTHER				MACHINERY Permanently Attached to Real Estate	TOTAL ASSESSED VALUE	Total Assessed Value as Equalized by the Board of Review	FINAL EQUALIZED VALUE	District No.	District No.													District No.	District No.	District No.	District No.	Tax including State Homestead	State Tax on Non-Homestead	SPECIAL TAXES	TOTAL TAXES	Month	Day	Year	Penalty	Penalty	Penalty	Penalty	Penalty	Penalty	Penalty
													Homestead Up to \$1,000 20%	Over \$1,000 and Non-Homestead 33 1/3%	Timber Land Class. 3c 20%	Homestead Up to \$1,000 25%	Over \$1,000 and Non-Homestead 40%	33 1/3%																																					
		Acres	100ths					Dollars	Dollars	Dollars	Dollars	Dollars	Dollars	Dollars	Dollars	Dollars	Dollars	Dollars		Dollars	Mills	Mills	Mills	Mills	Mills													Mills	Mills	Mills	Mills														
U. S. of America		NE 1/4 of NE 1/4				35	14	38		5																																													
State of Minnesota		NW 1/4 of NE 1/4																																																					
State of Minnesota		SW 1/4 of NE 1/4																																																					
State of Minnesota		SE 1/4 of NE 1/4																																																					
State of Minnesota		NE 1/4 of NW 1/4																																																					
State of Minnesota		NW 1/4 of NW 1/4																																																					
State of Minnesota		SW 1/4 of NW 1/4																																																					
State of Minnesota		SE 1/4 of NW 1/4																																																					
State of Minnesota		NE 1/4 of SW 1/4																																																					
U. S. of America		NW 1/4 of SW 1/4																																																					
U. S. of America		SW 1/4 of SW 1/4																																																					
State of Minnesota		SE 1/4 of SW 1/4																																																					
State of Minnesota		NE 1/4 of SE 1/4																																																					
State of Minnesota		NW 1/4 of SE 1/4																																																					
State of Minnesota		SW 1/4 of SE 1/4																																																					
State of Minnesota		SE 1/4 of SE 1/4																																																					

Blunt's Point  
King's Green Shores  
Rocky Point



Assessment Roll and Tax List of Real Property in the *Lower* of *Little Lake*

Indicate Type of Property: R-Residential, C-Commercial, I-Industrial, U-Utility, F-Farm, L-Lakeshore, T-Timber, M-Mineral

Form 307 (1957)

Table with columns: IN WHOSE NAME ASSESSED, TO WHOM TRANSFERRED, DESCRIPTION OF PROPERTY, TRUE AND FULL VALUATIONS, ASSESSED VALUATIONS, and FINAL EQUALIZED VALUE. Includes handwritten entries for Virginia Racchini and Michele Deslappis.

Cass County, Minnesota, for Taxes for the Year 1957.

Table with columns: VALUATIONS BY SCHOOL DISTRICTS AS EQUALIZED BY DEPARTMENT OF TAXATION, TAX INCLUDING STATE HOMESTEAD, STATE TAX ON NON-HOMESTEAD, SPECIAL TAXES, TOTAL TAXES, PAID, WHEN PAID, Number of Receipt, and various settlement/penalty dates.

141-30

142-30

Point, King's Green Shores, Rocky Point, Personal



Assessment Roll and Tax List of Real Property in the Town of Turtle Lake

Cass County, Minnesota, for Taxes for the Year 1957.

Form 300 (56) WILL HAVE IMPROVEMENTS

Indicate Type of Property: R-Residential, C-Commercial, I-Industrial, U-Utility, F-Farm, L-Lakeshore, T-Timber, M-Mineral

Table with columns: IN WHOSE NAME ASSESSED, TO WHOM TRANSFERRED, DESCRIPTION OF PROPERTY, TRUE AND FULL VALUATIONS, ASSESSED VALUATIONS, VALUATIONS BY SCHOOL DISTRICTS AS EQUALIZED BY DEPARTMENT OF TAXATION, TAXES, PAID, WHEN PAID, Number of Receipt, March Settlement 1958, June Settlement 1958, November Settlement 1958, Penalty, Collections to First Monday in January 1959, Delinquent on First Monday in January 1959, Total Delinquent Tax and Penalty, REMARKS.

141-30

142-30

Point

King's Green Shores

Rocky Point

Personal





Assessment Roll and Tax List of Real Property in the Town of South Lake of Leath Lake.  
\* Indicate Type of Property: R-Residential, C-Commercial, I-Industrial, U-Utility, F-Farm, L-Lakeshore, T-Timber, M-Mineral

Cass County, Minnesota, for Taxes for the Year 1957.

Form 507 (56) MILLAGE-ON-THE-SUPPLY, MINNESOTA

Main table with columns: IN WHOSE NAME ASSESSED, TO WHOM TRANSFERRED, DESCRIPTION OF PROPERTY, TRUE AND FULL VALUATIONS, ASSESSED VALUATIONS (RURAL, ALL OTHER, TOTAL ASSESSED VALUE), VALUATIONS BY SCHOOL DISTRICTS AS EQUALIZED BY DEPARTMENT OF TAXATION, TAXES, PAID, WHEN PAID, Number of Receipt, and various settlement dates (March, June, November, January) for 1957 and 1958, plus penalties and remarks.

141-30 Real

142-30

Rocky Point

King's Green Shores

Rocky Point

PERSONAL

Assessment Roll and Tax List of Real Property in the

Town of Little Lake

Cass County, Minnesota, for Taxes for the Year 1957.

Form SCD (56) 12-31-56

Indicate Type of Property: R-Residential, C-Commercial, I-Industrial, U-Utility, F-Farm, L-Lakeshore, T-Timber, M-Mineral

Main assessment table with columns: IN WHOSE NAME ASSESSED, TO WHOM TRANSFERRED, DESCRIPTION OF PROPERTY, TRUE AND FULL VALUATIONS, ASSESSED VALUATIONS, VALUATIONS BY SCHOOL DISTRICTS AS EQUALIZED BY DEPARTMENT OF TAXATION, SOLID FOR TAXES, PAID, WHEN PAID, Number of Receipt, etc.

Olef Iron Christensen

London M. Candy + Leslie B. Rhoades

2nd HALF PAID OCT 7 1958 16416  
1st HALF PAID MAY 31 1958 7761

PAID IN FULL MAR 31 1958 495

Point

King's Green Shores

Rocky Point

Forsyth

Assessment Roll and Tax List of Real Property in the Town of Smith Lake

Cass County, Minnesota, for Taxes for the Year 1957.

Form 500 (5-57) (1956-57) (1956-57) (1956-57)

Indicate Type of Property: R-Residential, C-Commercial, I-Industrial, U-Utility, F-Farm, L-Lakeshore, T-Timber, M-Mineral

Main table with columns: IN WHOSE NAME ASSESSED, TO WHOM TRANSFERRED, DESCRIPTION OF PROPERTY, TRUE AND FULL VALUATIONS, ASSESSED VALUATIONS, VALUATIONS BY SCHOOL DISTRICTS AS EQUALIZED BY DEPARTMENT OF TAXATION, TAXES, PAID, WHEN PAID, etc.

141-30

142-30

Point

King's Green Shores

Rocky Point

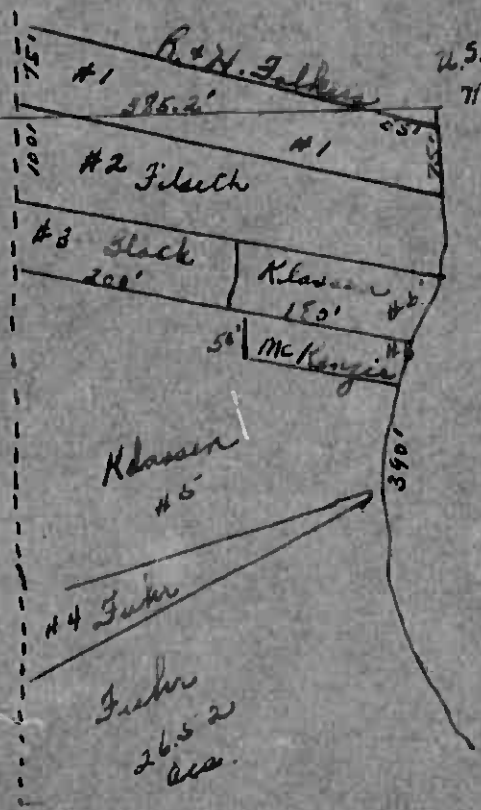
PETSONAL

Lot # 2  
 Sec. 15-142 30

Line between Lot 1 + 2

2 1/2 of Lot # 2  
 Miller Lac Maple Products  
 20 acres

7 1/2 line of 1/2 of Lot # 2  
 unknown



#1 Folkers	.38 ac.
#2 Filsyth	.30 ac.
#3 Black	.25 ac.
#4 Fuhr	.38 ac.
#5 Klassen	.2 ac.
#6 Mc Kenzie	.21 ac.

















Assessment Roll and Tax List of Real Property in the Town of Turtle Lake

Cass County, Minnesota, for Taxes for the Year 1957.

Table with columns for property description, valuations, taxes, and payments. Includes entries for Rose Hackey Munnell, Mary Atkin Finch, Carl M. Johnson, Seadore & Remedla Kotulas, Robert & Marguerite Hennshardt, State of Minnesota, and Susan Sibert.

112-30

112-30

King's Green Stores

Rocky Point

Personal

# Assessment Roll and Tax List of Real Property in the

town of *LITTLE LAKE*

\*Indicate Type of Property: R-Residential, C-Commercial, I-Industrial, U-Utility, F-Farm, L-Lakeshore, T-Timber, M-Mineral

## Cass County, Minnesota, for Taxes for the Year 1957.

111-30  
Real

112-30

IN WHOSE NAME ASSESSED	TO WHOM TRANSFERRED	DESCRIPTION OF PROPERTY			TRUE AND FULL VALUATIONS							ASSESSED VALUATIONS					VALUATIONS BY SCHOOL DISTRICTS AS EQUALIZED BY DEPARTMENT OF TAXATION											PAID	WHEN PAID	Number of Receipt	March Settlement 1958	June Settlement 1958	November Settlement 1958	Penalty	Collections to First Monday in January 1959	Penalty	Delinquent on First Monday in January 1959	Total Delinquent Tax and Penalty	REMARKS													
		SUBDIVISION	Sec. or Lot	Town or Block	Rdg.	Number of Acres of Land	LAND Exclusive of Structures and Improvements	BUILDINGS and Other Structures	MACHINERY Permanently Attached to Real Estate	TOTAL True and Full Value	RURAL		ALL OTHER		MACHINERY Permanently Attached to Real Estate	TOTAL ASSESSED VALUE	Total Assessed Value as Equalized by the Board of Review	FINAL EQUALIZED VALUE	District No.	District No.	District No.	District No.	District No.	District No.	Tax Including State Homestead	State Tax on Non-Homestead	SPECIAL TAXES													TOTAL TAXES	PAID	WHEN PAID	Number of Receipt	March Settlement 1958	June Settlement 1958	November Settlement 1958	Penalty	Collections to First Monday in January 1959	Penalty	Delinquent on First Monday in January 1959	Total Delinquent Tax and Penalty	REMARKS
											Acres	100ths	20%	Over \$4,000 and Non-Homestead 33 1/3%																																						
		NE 1/4 of NE 1/4																																																		
State of Minnesota		<i>NE 1/4 of NE 1/4</i>																																																		
State of Minnesota		<i>NW 1/4 of NE 1/4</i>																																																		
U. S. of America		<i>SW 1/4 of NE 1/4</i>																																																		
U. S. of America		<i>SE 1/4 of NE 1/4</i>																																																		
U. S. of America		<i>NE 1/4 of NW 1/4</i>																																																		
State of Minnesota		<i>NW 1/4 of NW 1/4</i>																																																		
U. S. of America		<i>SW 1/4 of NW 1/4</i>																																																		
U. S. of America		<i>SE 1/4 of NW 1/4</i>																																																		
U. S. of America		<i>NE 1/4 of SW 1/4</i>																																																		
U. S. of America		<i>NW 1/4 of SW 1/4</i>																																																		
U. S. of America		<i>SW 1/4 of SW 1/4</i>																																																		
U. S. of America		<i>SE 1/4 of SW 1/4</i>																																																		
U. S. of America		<i>NE 1/4 of SE 1/4</i>																																																		
U. S. of America		<i>NW 1/4 of SE 1/4</i>																																																		
U. S. of America		<i>SW 1/4 of SE 1/4</i>																																																		
U. S. of America		<i>SE 1/4 of SE 1/4</i>																																																		

King's Point

King's Green Shores

Rocky Point

Peterson



Assessment Roll and Tax List of Real Property in the Town of Turtle Lake

Cass County, Minnesota, for Taxes for the Year 1957.

Form SCD 1561

Indicate Type of Property: R-Residential, C-Commercial, I-Industrial, U-Utility, F-Farm, L-Lakeshore, T-Timber, M-Mineral

Main table with columns: IN WHOSE NAME ASSESSED, TO WHOM TRANSFERRED, DESCRIPTION OF PROPERTY, TRUE AND FULL VALUATIONS, ASSESSED VALUATIONS, VALUATIONS BY SCHOOL DISTRICTS AS EQUALIZED BY DEPARTMENT OF TAXATION, TAXES, PAID, WHEN PAID, Number of Receipt, March Settlement, June Settlement, November Settlement, Collections to First Monday in January 1959, Delinquent on First Monday in January 1959, Total Delinquent Tax and Penalty, REMARKS.

Real 111-30

112-30

Point

King's Green Shores

Rocky Point

Personal





Assessment Roll and Tax List of Real Property in the Town of Turtle Lake, Cass County, Minnesota, for Taxes for the Year 1957.

Form 3 CD (56)

Table with columns: IN WHOSE NAME ASSESSED, TO WHOM TRANSFERRED, DESCRIPTION OF PROPERTY, TRUE AND FULL VALUATIONS, ASSESSED VALUATIONS, VALUATIONS BY SCHOOL DISTRICTS AS EQUALIZED BY DEPARTMENT OF TAXATION, TAXES, PAID, WHEN PAID, Number of Receipt, March Settlement 1958, June Settlement 1958, November Settlement 1958, Collections to First Monday in January 1959, Delinquent on First Monday in January 1959, Total Delinquent Tax and Penalty, REMARKS.

Real 112-30

112-30

Point King's Green Shares Rocky Point Personal

Assessment Roll and Tax List of Real Property in the Town of Turtle Lake

Indicate Type of Property: R-Residential, C-Commercial, I-Industrial, U-Utility, F-Farm, L-Lakefront, T-Timber, M-Mineral

Cass County, Minnesota, for Taxes for the Year 1957.

Table with columns: IN WHOSE NAME ASSESSED, TO WHOM TRANSFERRED, DESCRIPTION OF PROPERTY, TRUE AND FULL VALUATIONS, ASSESSED VALUATIONS, VALUATIONS BY SCHOOL DISTRICTS AS EQUALIZED BY DEPARTMENT OF TAXATION, SOLD FOR TAXES, SPECIAL TAXES, TOTAL TAXES, PAID, WHEN PAID, Number of Receipts, March Settlement 1958, June Settlement 1958, November Settlement 1958, Collections to First Monday in January 1959, Delinquent on First Monday in January 1959, Total Delinquent Tax and Penalty, REMARKS.

112-30

112-30

Point

King's Green Shores

Rocky Point

PERSONAL

### Assessment Roll and Tax List of Real Property in the Town of Turtle Lake of County of Cass

Indicate Type of Property: R-Residential, C-Commercial, I-Industrial, U-Utility, F-Farm, L-Lakeshore, T-Timber, M-Mineral

### Cass County, Minnesota, for Taxes for the Year 1957.

IN WHOSE NAME ASSESSED	TO WHOM TRANSFERRED	DESCRIPTION OF PROPERTY SUBDIVISION	Sec. of Lot	Town or Block	No. of Acres of Land	No. School District	Indicate Homestead Yes or No	Indicate Agricultural Property Yes or No	Indicate Type of Property	TRUE AND FULL VALUATIONS						ASSESSED VALUATIONS						TOTAL ASSESSED VALUE	Total Assessed Value as Equalized by the Board of Review	FINAL EQUALIZED VALUE
										LAND Exclusive of Structures and Improvements	BUILDINGS and Other Structures	MACHINERY Permanently Attached to Real Estate	TOTAL True and Full Value	RURAL		ALL OTHER								
														Homestead Up to \$4,000 20%	Over \$4,000 and Non-Homestead 33 1/3 %	Timber Land Class Je 20%	Homestead Up to \$1,000 25%	Over \$1,000 and Non-Homestead 40%	MACHINERY Permanently Attached to Real Estate 33 1/3 %	Dollars	Dollars			
<i>Wheeler Lumber Ledges Supply Co</i>		<i>Lot 8</i> NE 1/4 of NE 1/4			<i>34 142 50</i>																			
<i>Bruce Siverts</i>		NW 1/4 of NE 1/4			<i>40</i>																			
		SW 1/4 of NE 1/4																						
		SE 1/4 of NE 1/4																						
State of Minnesota		<i>Lot 10</i> NE 1/4 of NW 1/4																						
U.S. of America		NW 1/4 of NW 1/4																						
U. S. of America		SW 1/4 of NW 1/4			<i>40</i>																			
<i>Peter H. Becken</i>		SE 1/4 of NW 1/4			<i>40</i>																			
State of Minnesota		<i>Lot 11</i> SW 1/4 of SW 1/4																						
U. S. of America		NW 1/4 of SW 1/4			<i>40</i>																			
		SW 1/4 of SW 1/4			<i>20</i>																			
U. S. of America		SE 1/4 of SW 1/4																						
<i>Bruce Siverts</i>		<i>Lot 1</i>			<i>9 55</i>																			
<i>C. L. Nelson</i>		NE 1/4 of SE 1/4 <i>Lot 9</i>			<i>20 65</i>																			
		NW 1/4 of SE 1/4																						
		SW 1/4 of SE 1/4																						
<i>Lakun Johnson</i>		SE 1/4 of SE 1/4 <i>Lot 6</i>			<i>18 76</i>																			
<i>Bruce Siverts</i>		<i>Lot 5</i>			<i>12 04</i>																			

SOLD FOR TAXES	VALUATIONS BY SCHOOL DISTRICTS AS EQUALIZED BY DEPARTMENT OF TAXATION						Tax Including State Homestead	State Tax on Non-Homestead	SPECIAL TAXES	TOTAL TAXES	PAID	WHEN PAID	Number of Receipt	March Settlement 1958	June Settlement 1958	Penalty	November Settlement 1958	Penalty	Collections to First Monday in January 1959	Penalty	Delinquent on First Monday in January 1959	Total Delinquent Tax and Penalty	REMARKS	
	District No.	Rate	District No.	Rate	District No.	Rate																		
	Dollars	Mills	Dollars	Mills	Dollars	Mills																		

Point

King's Green Shores

Rocky Point

Personal





Assessment Roll and Tax List of Real Property in the Town of Turtle Lake

Cass County, Minnesota, for Taxes for the Year 1957.

Table with columns: IN WHOSE NAME ASSESSED, TO WHOM TRANSFERRED, DESCRIPTION OF PROPERTY, TRUE AND FULL VALUATIONS, ASSESSED VALUATIONS, VALUATIONS BY SCHOOL DISTRICTS AS EQUALIZED BY DEPARTMENT OF TAXATION, TAXES, PAID, WHEN PAID, Number of Receipt, March Settlement 1958, June Settlement 1958, Penalty, November Settlement 1958, Penalty, Collections to First Monday in January 1959, Penalty, Delinquent on First Monday in January 1959, Total Delinquent Tax and Penalty, REMARKS.

142-30

142-30

King's Point

King's Green Shores

Rocky Point

PERSONAL



Assessment Roll and Tax List of Real Property in the Town of Turtle Lake

Indicate Type of Property: R-Residential, C-Commercial, I-Industrial, U-Utility, F-Farm, L-Lakeshore, T-Timber, M-Mineral

Cass County, Minnesota, for Taxes for the Year 1957.

Table with columns for IN WHOSE NAME ASSESSED, TO WHOM TRANSFERRED, DESCRIPTION OF PROPERTY, TRUE AND FULL VALUATIONS, ASSESSED VALUATIONS, VALUATIONS BY SCHOOL DISTRICTS AS EQUALIZED BY DEPARTMENT OF TAXATION, TAXES, PAID, WHEN PAID, and REMARKS. Includes handwritten entries for names like E. Johnson, Kenneth & Agnes E. Dickinson, Elvina & Daniel H. Necker, etc.

Bush's Point

112-30

King's Green Shores

Rocky Point

PERSONAL



IN WHOSE NAME ASSESSED	TO WHOM TRANSFERRED	DESCRIPTION OF PROPERTY		TRUE AND FULL VALUATIONS													SOLD FOR TAXES	VALUATIONS BY SCHOOL DISTRICTS AS EQUALIZED BY DEPARTMENT OF TAXATION						PAID	WHEN PAID	Number of Receipt	March Settlement 1958	June Settlement 1958	Penalty	November Settlement 1958	Penalty	Collections to First Monday in January 1959	Penalty	Delinquent on First Monday in January 1959	Total Delinquent Tax and Penalty	REMARKS																					
		Subdivision	Sec. of Lot	Town or Block	Reg.	Number of Acres of Land	Acres	100ths	Indicate Homestead Yes or No	Indicate Agricultural Yes or No	Indicate Type Property	LAND Exclusive of Structures and Improvements	BUILDINGS and Other Structures	MACHINERY Permanently Attached to Real Estate	TOTAL True and Full Value	Homestead 20%		RURAL Over \$4,000 and Non-Homestead 33 1/3%	Timber Land Class 3e 20%	ALL OTHER Homestead 25%	Over \$4,000 and Non-Homestead 40%	MACHINERY Permanently Attached to Real Estate 33 1/3%	TOTAL ASSESSED VALUE														Total Assessed Value as Equalized by the Board of Review	District No. 119	District No. 119	District No. 119	District No. 119	District No. 119	District No. 119	District No. 119	District No. 119	District No. 119	District No. 119	District No. 119	District No. 119	District No. 119	District No. 119	District No. 119					
Albert Thomas		King's Green Shores	1																																																						

111-30  
112-30  
King's Green Shores

Rocky Point  
PERSONAL





