

Assessment of  
Land













TABULAR SCHEDULE OF VALUATIONS,

LEVIED IN THE Town OF Juttle Lake

School District No.	VALUATION BY SCHOOL DISTRICTS				RATE OF STATE TAXES		RATE OF COUNTY TAXES					RATE OF TOWN TAXES										RATE OF SCHOOL TAXES	
	Agricultural Lands	Non-Agricultural Lands	Personal Property	Total Value of all Property except Money and Credits	Total Rate of State Tax	Total Rate of County Tax	Rev.	R. & B.	Welfare	Bonds and Int.	County Home Bldg.	Total Rate of Town Tax	Local	Special	State Loan	Deficiency	Tuition	Transportation	B. & Int.	Total Rate of Sch'l Tax	Total Rate of all Taxes		
Dollars	Dollars	Dollars	Dollars	Mills	Mills	Mills	Mills	Mills	Mills	Mills	Mills	Mills	Mills	Mills	Mills	Mills	Mills	Mills	Mills	Mills	Mills		
5	16,766	18,516	2,378	50,376	H. 3.98	103.82	28.04	14.01	49.83	9.97	2.00	7.19	1.00	5.50	37.90	1.25	20.00	1.08	20.00	5.00	97.08	217.78	
			72,11,306																				
					N. 11.517																		
Assessed Value	Rural	All Other	Personal Property	Total																			
Homestead	12,980			12,980																			
Non-Homestead	22,362		15,094	37,396																			
Total	35,282		15,094	50,376																			

RATES AND TAXES

COUNTY OF CASS, STATE OF MINNESOTA

LOCAL 1 MILL AND SPECIAL SCHOOL TAXES BY DISTRICTS										ALL OTHER TAXES		
Local 1 Mill	Special	State Loan	Total School Taxes	FUNDS	Rate	Amounts						
1.25	20.00	1.08	22.33	State - Non-Homestead		192.94						
1.50	20.00	1.08	22.58	State - Homestead		200.50						
				County Revenue,		1411.03						
				County Road and Bridge,		705.77						
				County Welfare,		2510.14						
				Bonds and Interest		502.25						
				County Home Bldg.		100.75						
						5229.94						
				Town Revenue,		352.63						
				Town Road and Bridge,		1002.48						
				Town Drag,		503.38						
				Town State Loan,								
				Phone		251.88						
						251.88						
						1909.25						
				School Local 1 Mill,		5037						
				School Special,		2004.95						
				School State Loan,								
				Deficiency		1007.02						
				Tuition								
				Transportation		5441						
				C. O.		1007.52						
				B. & Int.		251.88						
						4376.65						

Total Levy: \$ 11,909.28

Total Number of Acres 8986.49

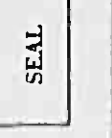
State of Minnesota, } ss. L. C. Peterson  
 COUNTY OF CASS, } Auditor of said County and State aforesaid. do hereby certify that the foregoing is a true and correct Schedule, showing the valuation of all the taxable property, in the Town of Juttle Lake, in said County, the several rates of Taxation and Totals of the several Tax Funds levied thereon for the year A. D. 1955.

Witness my hand and official seal, this 22 day of January, A. D. 1955.

L. C. Peterson County Auditor  
By Helen Billon, Deputy

Sec. or Lot	Town or Block	Range	Number of Acres of Land
			Acres

Total Taxes Real Estate 8261.48  
 Pers. Prop. 3647.80  
 Total 11,909.28





COLLECTIONS OF TAXES OF 1955

Town

of Little Lake

CASS COUNTY, MINNESOTA

FUNDS	MARCH SETTLEMENT 1955	JUNE SETTLEMENT 1955	NOV. SETTLEMENT 1955	Amount Collected from Nov. 1st to First Monday in Jan. 1957	REDUCTIONS	Total Reductions and collected	BALANCE UNCOLLECTED	ADDITIONS	Total Uncollected to First Monday in January, 1957
State-Non-Homestead	5944	7158	4415	232					
State-Homestead	4689	8216	5388						
County Revenue	32999	51826	37638	1637					
County Road and Bridge	16505	28723	18826	2817					
County Welfare	58705	102820	66958	2912					
County Bond and Interest	11746	20582	13382	583					
County House	2356	4129	2687	117					
Town Revenue	8247	14451	9406	409					
Town Road and Bridge	23448	41082	26740	1163					
Town Drag	1178	2064	1344	58					
Town State Loan	5891	10322	6719	293					
Town Phone	5891	10322	6719	293					
School Local 1 Mill	1178	2064	1344	60					
School Special	47520	91214	56191	2149					
School State Loan	23562	41288	26874	1171					
Deficiency									
Tuition	1272	2230	1451	62					
Transportation	23562	41288	26874	1171					
C.O.	5890	10323	6719	292					
B+J(5)									
	280579	486351	319650	13418					

	SCHOOL DISTRICT NO.	LOCAL 1 MILL	SPECIAL	STATE LOAN	Deficiency	Transport.	C.O.	B+J(5)	TOTALS
MARCH SETTLEMENT	School District No. 9#5	455	11386		9189	492	9109	2277	32828
	12#5	723	36134		14453	780	14453	3613	76756
	Totals	1178	47520		23562	1272	23562	5890	102984
JUNE SETTLEMENT	School District No. 9#5	890	22008		17606	957	17606	4402	63453
	12#5	1184	59206		23682	1279	23682	5921	114954
	Totals	2064	81214		41288	2230	41288	10323	178407
NOVEMBER SETTLEMENT	School District No. 9#5	440	10985		8796	475	8796	2199	31701
	12#5	904	45196		18078	776	18078	4520	87752
	Totals	1344	56191		26874	1451	26874	6719	119453
NOVEMBER to JANUARY	School District No. 9#5	32	774		619	33	619	153	2232
	12#5	28	1375		552	29	549	137	2670
	Totals	60	2149		1171	62	1168	292	4902
ADDITIONS	School District No.								
	Totals								
REDUCTIONS	School District No.								
	Totals								

or Ceased to be Homesteads

HOMESTEADS

Sec. or Lot	Town or Block	Acres	Number of Acres of Land











Assessment Roll and Tax List of Real Property in the Town of Turtle Lake, Cass County, Minnesota, for Taxes for the Year 1955. \*Indicate Type of Property: R-Residential, C-Commercial, I-Industrial, U-Utility, F-Farm

Table with columns: IN WHOSE NAME ASSESSED, TO WHOM TRANSFERRED, DESCRIPTION OF PROPERTY, TRUE AND FULL VALUATIONS, ASSESSED VALUATIONS, VALUATIONS BY SCHOOL DISTRICTS AS EQUALIZED BY DEPARTMENT OF TAXATION, TAX INCLUDING STATE HOMESTEAD, SPECIAL TAXES, TOTAL TAXES, PAID, WHEN PAID, Number of Receipt, March Settlement 1956, June Settlement 1956, Penalty, November Settlement 1956, Penalty, Collections to First Monday in January 1957, Delinquent on First Monday in January 1957, Total Delinquent Tax and Penalty, REMARKS.

State of Minnesota  
State of Minnesota  
U. S. of America  
William Hanson  
Julius O. & Mabel J. Huest  
Donald L. & Helen M. Dewey  
U. S. of America  
Donald L. & Helen M. Dewey  
" " "  
U. S. of America  
U. S. of America  
Alice B. & Gertrude N. Rolfe  
" " "  
Herman Lucht  
State of Minnesota  
Alice B. & Gertrude N. Rolfe  
Neil J. & Annie Dewey  
Herman Lucht

Table with columns: SUBDIVISION, Sec. or Lot, Town or Block, Range, Number of Acres of Land, No. School District, Indicate Homestead, Indicate Agricultural, Indicate Type of Property, LAND Exclusive of Structures and Improvements, BUILDINGS and Other Structures, MACHINERY Permanently Attached to Real Estate, TOTAL True and Full Value, RURAL (Homestead Up to \$4,000 20%, Over \$4,000 and Non-Homestead 33 1/3%), ALL OTHER (Homestead Up to \$1,000 25%, Over \$1,000 and Non-Homestead 40%), MACHINERY Permanently Attached to Real Estate 33 1/3%, TOTAL ASSESSED VALUE, Total Assessed Value as Equalized by the Board of Review, FINAL EQUALIZED VALUE.

Table with columns: SOLD FOR TAXES, District No., District Rate, District No., District Rate, District No., District Rate, District No., District Rate, District No., District Rate, Tax including State Homestead, State Tax on Non-Homestead, SPECIAL TAXES, TOTAL TAXES, PAID, WHEN PAID, Number of Receipt, March Settlement 1956, June Settlement 1956, Penalty, November Settlement 1956, Penalty, Collections to First Monday in January 1957, Delinquent on First Monday in January 1957, Total Delinquent Tax and Penalty, REMARKS.

14-30  
BUSH'S POINT  
KING'S GREEN SHORES  
ROCKY POINT







Assessment Roll and Tax List of Real Property in the Town of Turtle Lake

Cass County, Minnesota, for Taxes for the Year 1955.

Form SCD (23) 6-15-54

\*Indicate Type of Property: R-Residential, C-Commercial, I-Industrial, U-Utility, F-Farm

Table with columns: IN WHOSE NAME ASSESSED, TO WHOM TRANSFERRED, DESCRIPTION OF PROPERTY, TRUE AND FULL VALUATIONS, ASSESSED VALUATIONS, VALUATIONS BY SCHOOL DISTRICTS AS EQUALIZED BY DEPARTMENT OF TAXATION, TAXES, PAID, WHEN PAID, Number of Receipt, March Settlement 1956, June Settlement 1956, November Settlement 1956, Collections to First Monday in January 1957, Delinquent on First Monday in January 1957, Total Delinquent Tax and Penalty, REMARKS.

12-30

Green's Park Sec. 1-1-1950

Rush's Point King's Green Shorel Rocky Point



Assessment Roll and Tax List of Real Property in the Town of Turtle Lake

Cass County, Minnesota, for Taxes for the Year 1955.

Form 300 (35) ... \*Indicate Type of Property: R-Residential, C-Commercial, I-Industrial, U-Utility, F-Farm

Table with columns: IN WHOSE NAME ASSESSED, TO WHOM TRANSFERRED, SUBDIVISION, TRUE AND FULL VALUATIONS (LAND, BUILDINGS, MACHINERY, TOTAL), ASSESSED VALUATIONS (RURAL, ALL OTHER, MACHINERY, TOTAL ASSESSED), FINAL EQUALIZED VALUE.

Table with columns: SOLD FOR TAXES, VALUATIONS BY SCHOOL DISTRICTS AS EQUALIZED BY DEPARTMENT OF TAXATION, Tax Including State Homestead, State Tax on Non-Homestead, SPECIAL TAXES, TOTAL TAXES, PAID, WHEN PAID, Number of Receipt, March Settlement 1956, June Settlement 1956, November Settlement 1956, Collections to First Monday in January 1957, Delinquent on First Monday in January 1957, Total Delinquent Tax and Penalty, REMARKS.

142-30, Sec. 1-141-10, Bush's Point King's Green Shores, Rocky Point







Assessment Roll and Tax List of Real Property in the Town of Turtle Lake, Cass County, Minnesota, for Taxes for the Year 1955.

Form 300 (1-5-55)

\*Indicate Type of Property: R-Residential, C-Commercial, I-Industrial, U-Utility, F-Farm

Table with columns: IN WHOSE NAME ASSESSED, TO WHOM TRANSFERRED, SUBDIVISION, TRUE AND FULL VALUATIONS (LAND, BUILDINGS, MACHINERY, TOTAL), ASSESSED VALUATIONS (RURAL, ALL OTHER, MACHINERY, TOTAL), FINAL EQUALIZED VALUE.

(Continued on next page)

Cass County, Minnesota, for Taxes for the Year 1955.

Table with columns: SOLD FOR TAXES, VALUATIONS BY SCHOOL DISTRICTS AS EQUALIZED BY DEPARTMENT OF TAXATION, Tax Including State Homestead, State Tax on Non-Homestead, SPECIAL TAXES, TOTAL TAXES, PAID, WHEN PAID, Number of Receipt, March Settlement 1956, June Settlement 1956, November Settlement 1956, Collections to First Monday in January 1957, Delinquent on First Monday in January 1957, Total Delinquent Tax and Penalty, REMARKS.

149-30

Gov. of Minnesota

Sec. 1-141-50

Bush's Point

King's Green Shore

Rocky Point











Assessment Roll and Tax List of Real Property in the Town of Turtle Lake

\*Indicate Type of Property: R-Residential, C-Commercial, I-Industrial, U-Utility, F-Farm

Table with columns: IN WHOSE NAME ASSESSED, TO WHOM TRANSFERRED, DESCRIPTION OF PROPERTY, TRUE AND FULL VALUATIONS (LAND, BUILDINGS, MACHINERY, TOTAL), ASSESSED VALUATIONS (RURAL, ALL OTHER, MACHINERY, TOTAL ASSESSED VALUE), Total Assessed Value, FINAL EQUALIZED VALUE.

Cass County, Minnesota, for Taxes for the Year 1955.

Table with columns: SOLD FOR TAXES, VALUATIONS BY SCHOOL DISTRICTS AS EQUALIZED BY DEPARTMENT OF TAXATION, Tax Including State Homestead, State Tax on Non-Homestead, SPECIAL TAXES, TOTAL TAXES, PAID, WHEN PAID, Number of Receipt, March Settlement 1956, June Settlement 1956, Penalty, November Settlement 1956, Penalty, Collections to First Monday in January 1957, Penalty, Delinquent on First Monday in January 1957, Total Delinquent Tax and Penalty, REMARKS.



Assessment Roll and Tax List of Real Property in the Town of *Southgate*, of *South Dakota*, \*Indicate Type of Property: R-Residential, C-Commercial, I-Industrial, U-Utility, F-Farm

Table with columns: IN WHOSE NAME ASSESSED, TO WHOM TRANSFERRED, DESCRIPTION OF PROPERTY, TRUE AND FULL VALUATIONS, ASSESSED VALUATIONS, FINAL EQUALIZED VALUE. Includes handwritten entries for properties owned by U.S. of America, Mrs. Dohly, Diamond Metal Co., W.S. American, Peter Barker, Vera Devin, Lawrence M. & Viola F. Blackburn, Nettie Forrest, Nevada Land Co., Freda Milfred, Charles & Harriet Edwards, Merton & Alma M. Robbins, Charles & Harriet Edwards, Myron & Grace E. Jones.

Cass County, Minnesota, for Taxes for the Year 1955.

Table with columns: SOLD FOR TAXES, VALUATIONS BY SCHOOL DISTRICTS AS EQUALIZED BY DEPARTMENT OF TAXATION, Tax Including State Homestead, State Tax on Non-Homestead, SPECIAL TAXES, TOTAL TAXES, PAID, WHEN PAID, Number of Receipt, March Settlement 1956, June Settlement 1956, Penalty, November Settlement 1956, Penalty, Collections to First Monday in January 1957, Penalty, Delinquent on First Monday in January 1957, Total Delinquent Tax and Penalty, REMARKS. Includes handwritten entries for properties 1 through 20.

143-30

Part of original No. 1-141-30

Bush's Point

King's Green Shore

Rocky Point























Assessment Roll and Tax List of Real Property in the Town of Turtle Lake, Cass County, Minnesota, for Taxes for the Year 1955.

\*Indicate Type of Property: R-Residential, C-Commercial, I-Industrial, U-Utility, F-Farm

Table with columns: IN WHOSE NAME ASSESSED, TO WHOM TRANSFERRED, DESCRIPTION OF PROPERTY, TRUE AND FULL VALUATIONS, ASSESSED VALUATIONS, and FINAL EQUALIZED VALUE.

(Continued on next page)

Cass County, Minnesota, for Taxes for the Year 1955.

Table with columns: VALUATIONS BY SCHOOL DISTRICTS AS EQUALIZED BY DEPARTMENT OF TAXATION, TAX INCLUDING STATE HOMESTEAD, SPECIAL TAXES, TOTAL TAXES, PAID, WHEN PAID, and REMARKS.

14-30

14-30

14-30

14-30

14-30

14-30































Assessment Roll and Tax List of Real Property in the Down of Trust Lake,  
\*Indicate Type of Property: R-Residential, C-Commercial, I-Industrial, U-Utility, F-Farm

IN WHOSE NAME ASSESSED	TO WHOM TRANSFERRED	DESCRIPTION OF PROPERTY				TRUE AND FULL VALUATIONS							FINAL EQUALIZED VALUE				
		SUBDIVISION	Sec. or Lot	Town or Block	No. of Acres of Land	LAND Exclusive of Structures and Improvements	BUILDINGS and Other Structures	MACHINERY Permanently Attached to Real Estate	TOTAL True and Full Value	RURAL		ALL OTHER		MACHINERY Permanently Attached to Real Estate	TOTAL ASSESSED VALUE	Total Assessed Value as Equalized by the Board at Review	
										Acres	100ths	Homestead Up to \$4,000 20%					Over \$4,000 and Non-Homestead 33 1/3%
U. S. of America		N 1/4 of N 1/4	25	14	20												
U. S. of America		N 1/4 of N 1/4															
U. S. of America		S 1/4 of N 1/4															
U. S. of America		S 1/4 of N 1/4															
U. S. of America		N 1/4 of NW 1/4															
U. S. of America		NW 1/4 of NW 1/4															
U. S. of America		S 1/4 of NW 1/4															
U. S. of America		SE 1/4 of NW 1/4															
U. S. of America		NE 1/4 of SW 1/4															
U. S. of America		NW 1/4 of SW 1/4															
U. S. of America		SW 1/4 of SW 1/4															
U. S. of America		SE 1/4 of SW 1/4															
U. S. of America		NE 1/4 of SE 1/4															
U. S. of America		NW 1/4 of SE 1/4															
U. S. of America		SW 1/4 of SE 1/4															
U. S. of America		SE 1/4 of SE 1/4															

Cass County, Minnesota, for Taxes for the Year 1955.

SOLD FOR TAXES	VALUATIONS BY SCHOOL DISTRICTS AS EQUALIZED BY DEPARTMENT OF TAXATION						Tax including State Homestead	State Tax on Non-Homestead	SPECIAL TAXES	TOTAL TAXES	PAID.	WHEN PAID	Number of Receipts	March Settlement 1956	June Settlement 1956	Penalty	November Settlement 1956	Penalty	Collections to First Monday in January 1957	Penalty	Delinquent on First Monday in January 1957	Total Delinquent Tax and Penalty	REMARKS		
	District No.	District No.	District No.	District No.	District No.	District No.																			
	Rate	Rate	Rate	Rate	Rate	Rate																			
1																									
2																									
3																									
4																									
5																									
6																									
7																									
8																									
9																									
10																									
11																									
12																									
13																									
14																									
15																									
16																									
17																									
18																									
19																									
20																									

149-30  
Sec. 1-711-30  
Bush's Point  
King's Green Shores  
Rocky Point























Assessment Roll and Tax List of Real Property in the Town of Quinte Lake, Cass County, Minnesota, for Taxes for the Year 1955.

\*Indicate Type of Property: R-Residential, C-Commercial, I-Industrial, U-Utility, F-Farm

Table with columns: IN WHOSE NAME ASSESSED, TO WHOM TRANSFERRED, SUBDIVISION, TRUE AND FULL VALUATIONS (LAND, BUILDINGS, MACHINERY, TOTAL), ASSESSED VALUATIONS (RURAL, ALL OTHER, MACHINERY, TOTAL ASSESSED), Total Assessed Value, FINAL EQUALIZED VALUE.

(Continued on next page)

Cass County, Minnesota, for Taxes for the Year 1955.

Table with columns: VALUATIONS BY SCHOOL DISTRICTS AS EQUALIZED BY DEPARTMENT OF TAXATION, SOLD FOR TAXES, SPECIAL TAXES, TOTAL TAXES, PAID, WHEN PAID, Number of Receipt, March Settlement, June Settlement, November Settlement, Collections to First Monday in January 1957, Delinquent on First Monday in January 1957, Total Delinquent Tax and Penalty, REMARKS.

Gar of oratory, Bush's Point, King's Green Shores, Rocky Point



Assessment Roll and Tax List of Real Property in the Town of Turtle Lake, Minnesota

Cass County, Minnesota, for Taxes for the Year 1955.

Table with columns: IN WHOSE NAME ASSESSED, TO WHOM TRANSFERRED, DESCRIPTION OF PROPERTY, TRUE AND FULL VALUATIONS, ASSESSED VALUATIONS, VALUATIONS BY SCHOOL DISTRICTS AS EQUALIZED BY DEPARTMENT OF TAXATION, TAXES, PAID, WHEN PAID, etc.

142-30 Bush's Point King's Green Shores Rocky Point



























Assessment Roll and Tax List of Real Property in the Town of Turtle Lake, Cass County, Minnesota, for Taxes for the Year 1955.

Form 300 (55) (Folio-Date-County, Minnesota)

\*Indicate Type of Property: R-Residential, C-Commercial, I-Industrial, U-Utility, F-Farm

Table with columns: IN WHOSE NAME ASSESSED, TO WHOM TRANSFERRED, SUBDIVISION, TRUE AND FULL VALUATIONS, ASSESSED VALUATIONS, FINAL EQUALIZED VALUE.

Cass County, Minnesota, for Taxes for the Year 1955.

Table with columns: SOLD FOR TAXES, VALUATIONS BY SCHOOL DISTRICTS AS EQUALIZED BY DEPARTMENT OF TAXATION, SPECIAL TAXES, TOTAL TAXES, PAID, WHEN PAID, Number of Receipt, March Settlement, June Settlement, November Settlement, Collections to First Monday in January, Delinquent on First Monday in January, Total Delinquent Tax and Penalty, REMARKS.

143-30

make one for 1956

Gov. of Minn. Sec. 1-121-20 Ash's Point King's Green Shores Rocky Point







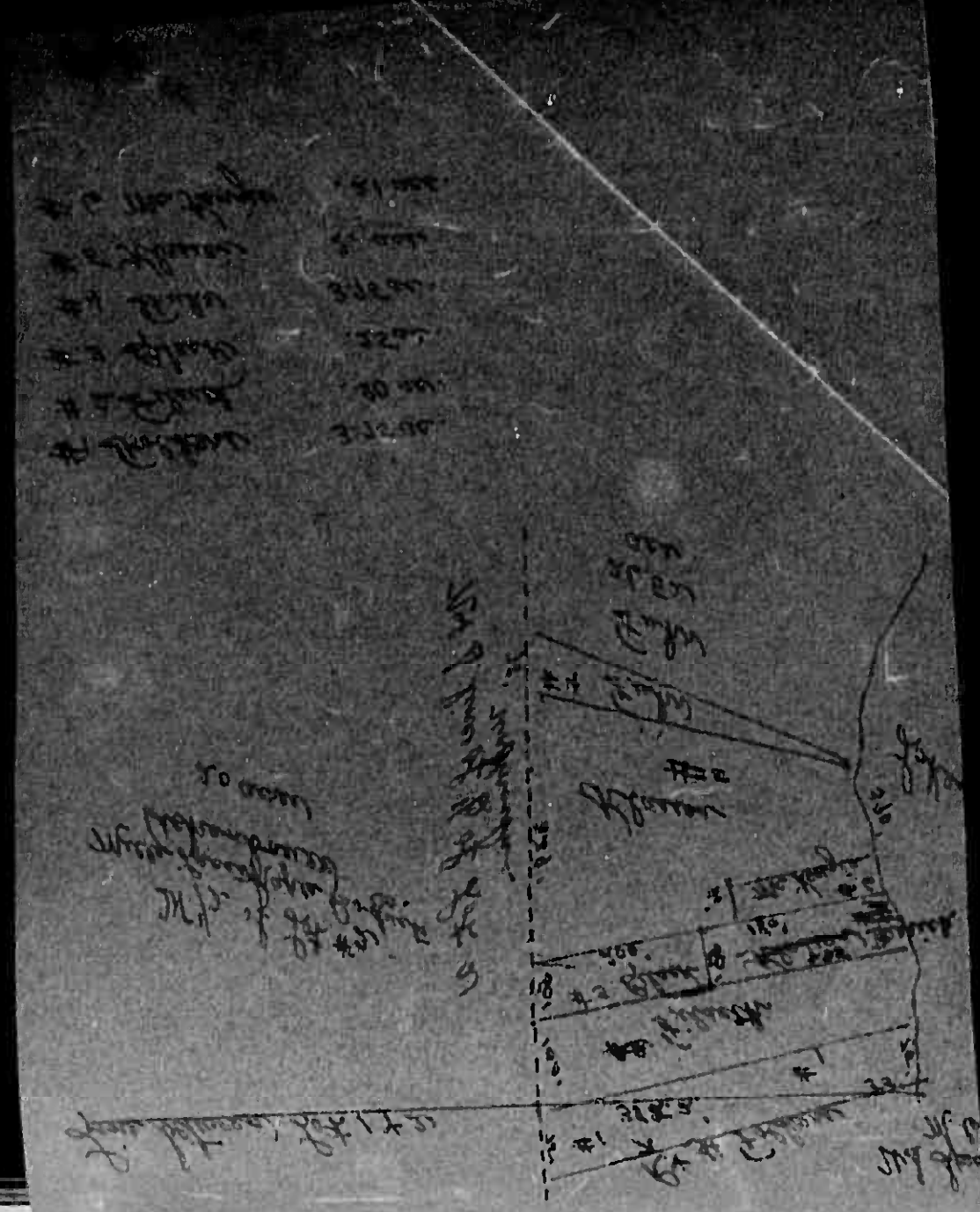
Assessment Roll and Tax List of Real Property in the Town of Turtle Lake, Cass County, Minnesota, for Taxes for the Year 1955.

See Page 38 of 1954 Book of Assessments

1-2-30

Table with columns: IN WHOSE NAME ASSESSED, TO WHOM TRANSFERRED, DESCRIPTION OF PROPERTY, TRU AND FULL VALUATIONS, ASSESSED VALUATIONS (RURAL, ALL OTHER, MACHINERY), TOTAL ASSESSED VALUE, FINAL EQUALIZED VALUE.

61 86



Cass County, Minnesota, for Taxes for the Year 1955.

Table with columns: VALUATIONS BY SCHOOL DISTRICTS AS EQUALIZED BY DEPARTMENT OF TAXATION, TAXES, PAID, WHEN PAID, Number of Receipt, March Settlement 1956, June Settlement 1956, November Settlement 1956, Collections to First Monday in January 1957, Delinquent on First Monday in January 1957, Total Delinquent Tax and Penalty, REMARKS.

61 86, 391.86, 6.19, 398.04, 197.00, 195.26, 257.88, 80.58, -80.58

Gar of record, Sec. 1-141-20, Bush's Point, King's Green Shores, Rocky Point



















































Assessment Roll and Tax List of Real Property in the Town of Turtle Lake, Cass County, Minnesota, for Taxes for the Year 1955.

Table with columns: IN WHOSE NAME ASSESSED, TO WHOM TRANSFERRED, DESCRIPTION OF PROPERTY, TRUE AND FULL VALUATIONS, ASSESSED VALUATIONS, FINAL EQUALIZED VALUE.

Table with columns: SOLD FOR TAXES, VALUATIONS BY SCHOOL DISTRICTS AS EQUALIZED BY DEPARTMENT OF TAXATION, SPECIAL TAXES, TOTAL TAXES, PAID, WHEN PAID, Number of Receipt, March Settlement 1956, June Settlement 1956, November Settlement 1956, Collections to First Monday in January 1957, Delinquent on First Monday in January 1957, Total Delinquent Tax and Penalty, REMARKS.

149-30

Garforyer, Sec. 1-14-30

Rush's Point King's Green Shores

Rocky Point



Assessment Roll and Tax List of Real Property in the Town of Turtle Lake, Cass County, Minnesota, for Taxes for the Year 1955.

Table with columns: IN WHOSE NAME ASSESSED, TO WHOM TRANSFERRED, DESCRIPTION OF PROPERTY, TRUE AND FULL VALUATIONS, ASSESSED VALUATIONS, VALUATIONS BY SCHOOL DISTRICTS AS EQUALIZED BY DEPARTMENT OF TAXATION, SOLD FOR TAXES, PAID, WHEN PAID, Number of Receipt, March Settlement 1956, June Settlement 1956, November Settlement 1956, Collections to First Monday in January 1957, Delinquent on First Monday in January 1957, Total Delinquent Tax and Penalty, REMARKS.

142-30

Buf. of On. (7) Bush's Point King's Green Shores Rocky Point



Assessment Roll and Tax List of Real Property in the Town of Turtle Lake, Cass County, Minnesota, for Taxes for the Year 1955.

Cass County, Minnesota, for Taxes for the Year 1955.

Table with columns: IN WHOSE NAME ASSESSED, TO WHOM TRANSFERRED, DESCRIPTION OF PROPERTY, TRUE AND FULL VALUATIONS, ASSESSED VALUATIONS, VALUATIONS BY SCHOOL DISTRICTS AS EQUALIZED BY DEPARTMENT OF TAXATION, TAXES, PAID, WHEN PAID, Number of Receipt, March Settlement 1956, June Settlement 1956, November Settlement 1956, Delinquent on First Monday in January 1957, Delinquent on First Monday in January 1957, Total Delinquent Tax and Penalty, REMARKS.

19-30

out of county Sec. 1-11-30

Bush's Point King's Green Shoreland

Rocky Point



Assessment Roll and Tax List of Real Property in the Town of Turtle Lake, Cass County, Minnesota, for Taxes for the Year 1955.

Table with columns: IN WHOSE NAME ASSESSED, TO WHOM TRANSFERRED, DESCRIPTION OF PROPERTY, TRUE AND FULL VALUATIONS, ASSESSED VALUATIONS, VALUATIONS BY SCHOOL DISTRICTS AS EQUALIZED BY DEPARTMENT OF TAXATION, SOLD FOR TAXES, SPECIAL TAXES, TOTAL TAXES, PAID, WHEN PAID, Number of Receipt, March Settlement 1956, June Settlement 1956, Penalty, November Settlement 1956, Penalty, Collections to First Monday in January 1957, Delinquent on First Monday in January 1957, Total Delinquent Tax and Penalty, REMARKS.

14-30

Car. of Greenery Sec. 1-141-30

Bush's Point

Kling's Green Shores

Rocky Point

10.42 Conc

11.16 Conc

26.59 Conc















Assessment Roll and Tax List of Real Property in the Town of Turtle Lake

\*Indicate Type of Property: R-Residential, C-Commercial, I-Industrial, U-Utility, F-Farm

Form 50 (55) UNIFORM COUNTY, MINN.

Table with columns: IN WHOSE NAME ASSESSED, TO WHOM TRANSFERRED, SUBDIVISION, DESCRIPTION OF PROPERTY, TRUE AND FULL VALUATIONS, ASSESSED VALUATIONS, FINAL EQUALIZED VALUE.

Cass County, Minnesota, for Taxes for the Year 1955.

Table with columns: SOLD FOR TAXES, VALUATIONS BY SCHOOL DISTRICTS AS EQUALIZED BY DEPARTMENT OF TAXATION, SPECIAL TAXES, TOTAL TAXES, PAID, WHEN PAID, Number of Receipt, March Settlement 1956, June Settlement 1956, November Settlement 1956, Collections to First Monday in January 1957, Delinquent on First Monday in January 1957, Total Delinquent Tax and Penalty, REMARKS.

Out of order Sec. 1-141-30

Bush's Point

King's Green Shore Rocky Point















