

ASSESSMENT & TAX LIST

Turtle Lake

1948









**SUMMARY OF TAX COLLECTION**

Original Levy	- - - - -	\$ 6523.64	
Additions	- - - - -	\$ 31.72	
<b>CANCELLATIONS</b>			
Abatements	- - - - -	\$ 106.82	
			\$ 6448.24
<b>COLLECTIONS</b>			
March Settlement	- - - - -	\$ 1105.10	
June Settlement	- - - - -	\$ 3106.36	
November Settlement	- - - - -	\$ 4590.35	
January Settlement	- - - - -	\$ 164.64	\$ _____
			\$ _____
Over Collected	- - - - -	\$ 3.36	
Under Collected	- - - - -	\$ _____	
Delinquent	- - - - -	\$ 785.11	\$ _____
Total	- - - - -		\$ 6448.20



Treasurer's Office, Cass County, Minnesota

RECEIVED this, the first Monday (being the 3rd day) of January, A. D. 1949, of L. Peterson, Auditor of said County, Minnesota, the Tax List of all Taxable Real and Personal Property in the Town of Turtle Lake in said County for the year A. D. 1948, as specified above and amounting to \_\_\_\_\_ Dollars

Paul Jewell  
County Treasurer

Office of County Treasurer, Cass County, Minnesota

To L. Peterson, County Auditor:

Sir:—I herewith return to you the Tax List for the Town of Turtle Lake in said County for the year 1948, heretofore received from you. I certify that I have compared the same with the duplicate receipts in your office, and have written opposite the amount of each tax so received the words "First Quarter Paid", "Second Quarter Paid", "Third Quarter Paid" or "Paid in full" as the case may be, and the number of my receipt given in discharge of said tax, and each tract or lot of real property against which the taxes remain unpaid is delinquent for said year.

Yours respectfully,

County Treasurer.

Auditor's Office, Cass County, Minnesota

I, \_\_\_\_\_ Auditor of said County, and State of Minnesota, do hereby certify that the following is a correct list of the Taxes levied on the Real and Personal Property in the \_\_\_\_\_ of \_\_\_\_\_ for the year 1948.

WITNESS my hand and official seal, the \_\_\_\_\_ day of \_\_\_\_\_ 1949.

(SEAL)

County Auditor.

Auditor's Office, Cass County, Minnesota

194  
I hereby certify that on the first Monday in January 1950, I received of \_\_\_\_\_ County Treasurer, the Tax List of the \_\_\_\_\_ of \_\_\_\_\_ in said County for the year 1948; that I have compared the said list with the Statements received for by said Treasurer, which are on file in my office, and that each tract or lot of real property therein against which the taxes, or any part thereof, remains unpaid are delinquent for said year.

(SEAL)

County Auditor.



TABULAR SCHEDULE OF VALUATIONS,

LEVIED IN THE Township of Turtle Lake

RATES AND TAXES

COUNTY OF CASS, STATE OF MINNESOTA

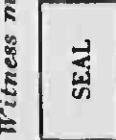
185.11  
3.26  
181.97

School District No.	VALUATION BY SCHOOL DISTRICTS				RATE OF STATE TAXES		RATE OF COUNTY TAXES					RATE OF TOWN TAXES								RATE OF SCHOOL TAXES															
	Agricultural Lands	Non-Agricultural Lands	Personal Property	Total Value of all Property except Money and Credits	Total Rate of State Tax	Rev.	R. & B.	Welfare	Bonds and Int.	Skp.	Total Rate of County Tax	Rev.	R. & B.	Drag Tax	State Loan	Fire Tel.	Total Rate of Town Tax	Local	Special	State Loan	Deficiency	Tuition	Transportation	Bond	C.O.	Local 1 Mill	Special	State Loan	Local 1 Mill	Special	State Loan				
5	20576	6835	6289	33,700	H. 2.91	23.4	7.2	48.5	7.9	5.5	93.5	10.4	15.	1.	5.	5.	36.4	1.	15.	11.8	1.8	1.8	1.8	1.8	8.	52.3	185.11	2058	30863	24279	3704	30246	16461	1076.11	
					N.H. 2.86																														
Assessed Value Homestead	Rural 10659	All Other	Personal Property 6289	Total 10659																															
Non-Homestead Total	16752		6289	23,041																															
	27411		6289	33,700																															

LOCAL 1 MILL AND SPECIAL SCHOOL TAXES BY DISTRICTS										ALL OTHER TAXES				
Local 1 Mill	Special	State Loan	Local 1 Mill	Special	State Loan	FUNDS	Rate	Amounts						
2058	30863	24279	3704	30246	16461	State-Non-Homestead		9806						
1342	39371	15485	2362	19291	10499	State-Homestead		8880						
3370	70234	39764	6066	49537	26960	County Revenue,		78854						
						County Road and Bridge,		24264						
						County Welfare,		163440						
						Bonds and Interest		26623						
						Skp.		21904						
						Town Revenue,		35047						
						Town Road and Bridge,		50547						
						Town Drag,		3370						
						Town State Loan,		16849						
						Fire		16849						
						Telephone								
						School Local 1 Mill,		3370						
						School Special,		70234						
						School State Loan,		39764						
						Deficiency								
						Tuition								
						Transportation		6066						
						Bond or Int		49537						
						exp. Int		26960						

Total Number of Acres 122  
 State of Minnesota,  
 COUNTY OF CASS  
 Auditor of said County and State aforesaid, do hereby certify that the foregoing is a true and correct Schedule, showing the valuation of all the taxable property, in the Township of Turtle Lake, in said County, the several rates of Taxation and Totals of the several Tax Funds levied thereon for the year A. D. 1948.  
 Witness my hand and official seal, this 10 day of June A. D. 1948.  
 J. L. Peterson  
 County Auditor

Total Taxes Real Estate 5240.94  
 Pers. Prop. 1282.70  
 Total 6523.64



11-30  
 REAL  
 143-30  
 Bush's Point  
 King's Green Shore



FUNDS	MARCH SETTLEMENT 1949	JUNE SETTLEMENT 1949	NOV. SETTLEMENT 1949	Amount Collected from Nov. 1947... to First Monday in Jan. 1950	REDUCTIONS	Total Reductions and Collected	BALANCE UNCOLLECTED	ADDITIONS	Total Uncollected to First Monday in January, 1950
State-Non-Homestead,	19 49	38 42	21 16	185					
State-Homestead,	16 06	47 18	23 74	245					
County Revenue,	129 12	379 37	190 60	1971					
County Road and Bridge,	39 73	116 73	58 65	607					
County Welfare,	267 61	786 29	375 05	4086					
County Bond and Interest,	43 57	128 07	64 35	666					
<i>Sty</i>	35 87	105 38	52 74	548					
Town Revenue,	57 38	168 81	84 71	876					
Town Road and Bridge,	82 77	243 18	122 18	1264					
Town Drag,	5 52	16 21	8 14	84					
Town State Loan,									
<i>Fire</i>	27 59	81 26	40 72	421					
<i>Ill</i>	27 59	81 26	40 72	421					
School Local 1 Mill,	5 52	16 21	8 14	85					
School Special,	146 96	310 09	183 57	1947					
School State Loan,									
Deficiency	65 11	191 30	96 12	1044					
Tuition									
Transportation	9 94	29 18	14 66	152					
<i>G.O.</i>	44 14	124 70	65 16	674					
<i>B+F (un)</i>	81 11	238 32	117 74	1238					
	1105 10	3106 36	1590 35	16464					

	SCHOOL DISTRICT NO.	LOCAL 1 MILL	SPECIAL	STATE LOAN	<i>Defic.</i>	<i>G.O.</i>	<i>B+F (un)</i>	<i>Transp.</i>	TOTALS
MARCH SETTLEMENT	<i>N-5</i> <i>NA-5</i>	<i>124</i> <i>428</i>	<i>18 63</i> <i>128 43</i>		<i>14 59</i> <i>50 52</i>	<i>7 87</i> <i>34 25</i>	<i>18 18</i> <i>62 93</i>	<i>2 23</i> <i>771</i>	<i>64 66</i> <i>28842</i>
Totals		<i>552</i>	<i>146 96</i>		<i>65 11</i>	<i>44 14</i>	<i>81 11</i>	<i>9 94</i>	<i>352 78</i>
JUNE SETTLEMENT	<i>A-5</i> <i>NA-5</i>	<i>11 75</i> <i>476</i>	<i>176 29</i> <i>133 80</i>		<i>138 68</i> <i>52 62</i>	<i>94 02</i> <i>35 68</i>	<i>172 76</i> <i>um. 65 56</i>	<i>21 15</i> <i>803</i>	<i>614 65</i> <i>300 15</i>
Totals		<i>1621</i>	<i>310 09</i>		<i>191 30</i>	<i>129 70</i>	<i>238 32</i>	<i>29 18</i>	<i>914 80</i>
NOVEMBER SETTLEMENT	<i>A-5</i> <i>NA-5</i>	<i>4 05</i> <i>409</i>	<i>6 78</i> <i>122 77</i>		<i>47 82</i> <i>483 0</i>	<i>32 42</i> <i>32 74</i>	<i>57 57</i> <i>60 17</i>	<i>7 27</i> <i>7 37</i>	<i>211 93</i> <i>275 46</i>
Totals		<i>8 14</i>	<i>183 57</i>		<i>96 12</i>	<i>65 16</i>	<i>119 74</i>	<i>14 66</i>	<i>487 37</i>
NOVEMBER to JANUARY	<i>A-5</i> <i>NA-5</i>	<i>39</i> <i>46</i>	<i>5 80</i> <i>12 07</i>		<i>4 56</i> <i>5 88</i>	<i>3 09</i> <i>3 65</i>	<i>5 68</i> <i>6 70</i>	<i>70</i> <i>82</i>	<i>20 22</i> <i>30 68</i>
Totals		<i>85</i>	<i>19 47</i>		<i>10 44</i>	<i>6 74</i>	<i>12 35</i>	<i>152</i>	<i>50 90</i>
ADDITIONS	School District No.								
Totals									
REDUCTIONS	School District No.								
Totals									

1-1-50  
1-2-50  
REAL  
Burb's Point  
King's Green Shores



















































































































































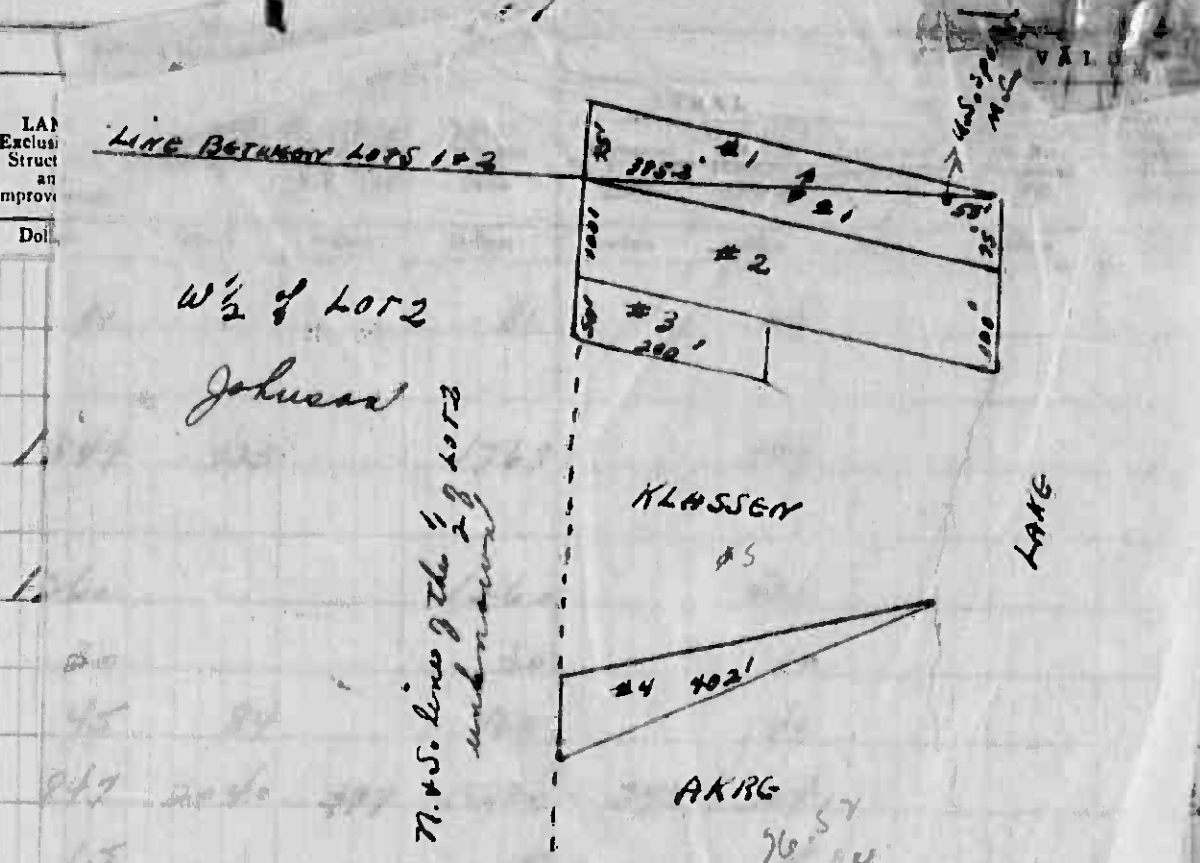








IN WHOSE NAME ASSESSED	TO WHOM TRANSFERRED	DESCRIPTION OF PROPERTY				No. School District	Imp. State	Imp. Local	Imp. Other	LA) Excess Struct an Improv
		SUBDIVISION	Sec. or Lot	Town or Block	Reg.	Number of Acres of Land				Do.
<i>Lyle H. Hollander</i>	State of Minnesota	NE 1/4 of NE 1/4 LOT 1	4	142	30	185	5	70		
U. S. of America		NW 1/4 of NE 1/4 " 2	7	142	30					
<i>Roland A. + Christine B. Sawyer</i>		SW 1/4 of NE 1/4 " 3				34.35		70		
U. S. of America		SE 1/4 of NE 1/4 " 5								
<i>Lyle H. Hollander</i>	State of Minnesota	" 4	9	142	30	40.40		70		
<i>Philip S. + Mae C. Akers</i>		Part of Lot 2 (#4)	15	142	30	38				
<i>Claude Miller</i>		NW 1/4 of NW 1/4 " 1				70				
<i>Philip S. + Mae C. Akers</i>		SW 1/4 of NW 1/4 about 1/2 acre of Lot 1				11		70		
<i>Selby Black</i>		SE 1/4 of NW 1/4 Part of Lot 2 (#3)				25		70		
<i>John B. + Effie May Thompson</i>		Part of Lot 2 (#2)				80		70		
<i>Lillian W. + Antoinette Johnson</i>		NE 1/4 of SW 1/4 W 1/2 of Lot 2				20		70		
<i>Philip S. + Mae C. Akers</i>		NW 1/4 of SW 1/4 4 1/2 ac. NW 1/4 of Lot 2				26.52				
<i>Carl Ray Johnson</i>		W 1/2 of SW 1/4 7 NW 1/4	16	142	30	20		70		
<i>Sigurd Johnson + Howard Conn</i>		E 1/2 of SW 1/4 9 NW 1/4				1.77				
<i>Carl S. Draper + James Kelsey</i>		SE 1/4 of NE 1/4 + NE 1/4 of SE 1/4				80		70		
<i>Leonard Peterson</i>		NE 1/4 of SE 1/4 7 E 1/4 of SW 1/4				40		70		
<i>P. P. Klassen</i>		SW 1/4 of SE 1/4 Part of Lot 2	45	15	142	30	251	70		
		SE 1/4 of SE 1/4								



TOTAL ASSESSED VALUE	Total Assessed Value as Equalized by the Board of Review	FINAL EQUALIZED VALUE	SOLD FOR TAXES	VALUATIONS BY SCHOOL DISTRICTS AS EQUALIZED BY DEPARTMENT OF TAXATION						Tax including State Homestead	State Tax on Non-Homestead	SPECIAL TAXES	TOTAL TAXES	PAID	WHEN PAID	Number of Receipts	March Settlement 1949	June Settlement 1949	Penalty	November Settlement 1949	Penalty	Collections to First Monday in January 1950	Penalty	Delinquent on First Monday in January 1950	Total Delinquent Tax and Penalty	REMARKS		
				District No. 5	District No. 5	District No. 5	District No. 5	District No. 5	District No. 5																			
27			1									510	1	Forfeited												510	Care	
589			2									111.30	3	2nd Half Paid OCT 31 1948	13715													
420			3									109.02	2.28	3rd Half Paid MAY 31 1949	88.72													
420			4									77.74	16.2	2nd Half Paid DEC 14 1948	41.81													
10			5									1.86	0.4	2nd Half Paid MAY 31 1949	112.72													
43			6									7.96	1.6	PAID IN FULL 1 7 1948	41.95													
912.70			7									182.50	1.94	2nd Half Paid DEC 14 1948	116.77													
5			8									92	0.2	PAID IN FULL FEB 15 1949	17.55													
137			9									25.36		PAID IN FULL FEB 15 1949	17.56													
37			10									6.84	1.4															
177			11									32.76	1.68	2nd Half Paid DEC 14 1948	116.72													
32			12									5.92		PAID IN FULL MAY 31 1949														
147			13									27.22	3.6															
73			14									13.52	2.8															
17			15									17.58	3.6	PAID IN FULL MAY 31 1949	62.90													
17			16																									
17			17																									
17			18																									
17			19																									
17			20																									
167	2704											331.70	9.18		522.38													
												182.50																

27846 5216 3249 501 8966 427 2110 167 2704 # 769 1623 1792 # 408 = 677 503 = 2127 912 = 5704 11 331.70 9.18 522.38 2630 18348 6377 0.989 54.48 84.46











































































