

ASSESSMENT & TAX LIST - 1957

Trelipe

Form 314

NAME OF OWNER

TABULAR SCHEDULE OF VALUATIONS,

LEVIED IN THE Town OF Trilize

RATES AND TAXES

COUNTY OF CASS, STATE OF MINNESOTA

School District No.	VALUATION BY SCHOOL DISTRICTS				RATE OF STATE TAXES		RATE OF COUNTY TAXES					RATE OF TOWN TAXES										SCHOOL TAXES			TAXES LEVIED														
	Agri-cultural Lands	Non-Agri-cultural Lands	Personal Property	Total Value of all Property except Money and Credits	Total Rate of State Tax	Total Rate of County Tax	Rev.	R. & B.	Wel-fare	Bonds and Int.	Welfare Def. Proj.	Welfare Def. Proj.	Welfare Def. Proj.	Rev.	R. & B.	Drag Tax	State Loan	Phone	Total Rate of Town Tax	Local	Spe-cial	State Loan	Defi-cien-cy	Tui-tion	Trans-porta-tion	C.O.	Total Rate of Sch'l Tax	Total Rate of all Taxes	Local 1 Mill	Special	State Loan	Def.	Transp.	C.O.	Total School Taxes	FUNDS	Rate	Amounts	
Un	14,039	4,472	4,683	23,194	H. 6.01	112.3	30.58	15.47	15.43	2.81	5.		10.	15.	1.		10.	36.	1.	20.		63.		1.02	10.	95.02	249.33	1404	28078		88446	1432	14039	133399	State - Non-Homestead,		12864		
																										115.02	249.33	915	36620		57677	934	9155	105301	State - Homestead,		13940		
					N. H. 6.61																																		
					12.62																																		
Assessed Value Homestead	Rural 3790	All Other	Personal Property	Total 3790																																			
Non-Homestead	14,721		4,683	19,404																																			
Total	18,511		4,683	23,194																																			

Total Levy, \$ 6095.22

County - Continued
P.E. RA
Co. Nurse
R & B Bldg
Agric Loan.

School Local 1 Mill, 2319
School Special, 64698
School State Loan, 146123
Deficiency, 2366
Tuition, 23194
Transportation, 238700

Total Number of Acres 855.2
State of Minnesota, ss.
COUNTY OF CASS
foregoing is a true and correct Schedule, showing the valuation of all the taxable property, in the Town of Trilize, in said County, the several rates of Taxation and Totals of the several Tax Funds levied thereon for the year 4. D. 1957.

I, Edith Peterson, Auditor of said County and State aforesaid, do hereby certify that the foregoing is a true and correct Schedule, showing the valuation of all the taxable property, in the Town of Trilize, in said County, the several rates of Taxation and Totals of the several Tax Funds levied thereon for the year 4. D. 1957.

Witness my hand and official seal, this 2nd day of January A. D. 1958.
SEAL
Edith Peterson County Auditor.
By Helen Bilten, Deputy

Total Taxes Real Estate 4802.94
Pers. Prop. 1292.28
Total 6095.22

139 Real Estate

110-27 Birchwood Stores

COLLECTIONS OF TAXES OF 1957

Town OF *Delphi*, CASS COUNTY, MINNESOTA

NAME OF OWNER	FUNDS	MARCH SETTLEMENT	JUNE SETTLEMENT	NOV. SETTLEMENT	Amount Collected from Nov. 1956 to First Monday in Jan. 1957	REDUCTIONS	Total Reductions and Collected	BALANCE UNCOLLECTED	ADDITIONS	Total Uncollected to First Monday in January, 1957
		1957	1957	1957						
	State-Non-Homestead,	2879	3493	715	11					
	State-Homestead,	3036	8570	1640	172					
	County Revenue,	15447	43610	8348	880					
	County Road and Bridge,	7577	21392	4095	432					
	County Welfare,	23818	67241	12871	1356					
	County Bond and Interest,	2187	6175	1182	125					
	Welfare deficit	1419	4007	767	81					
	R. + B. Fed Proj.	2526	7130	1364	143					
	PERA	1481	4179	801	84					
	Town Revenue,	5051	14261	2730	288					
	Town Road and Bridge,	7577	21392	4095	432					
	Town Drag,	506	1426	273	29					
	Town State Loan,									
	Phone	5051	14261	2730	287					
	School Local 1 Mill,	506	1426	273	29					
	School Special,	18524	36876	6503	576					
	School State Loan,									
	Deficiency	31824	89845	17198	1812					
	Tuition									
	Transportation	515	1454	278	29					
	C.O.	5051	14260	2729	288					
	Co. Nurse	1010	2853	546	58					
	R. + B. Aldy.	1010	2853	546	58					
	Cass Co. Agri.	253	714	136	14					
		137248	367418	69820	7184					

MARCH SETTLEMENT	School District No.	LOCAL 1 MILL	SPECIAL	STATE LOAN	Deficiency	Transp.	C.O.	TOTALS
	Un a	84	1682		5298	86	841	7991
	Un na	422	16842		26526	429	4210	48429
	Totals	506	18524		31824	515	5051	56420
	Un a	1008	20171		63534	1028	10084	95825
	Un na	418	16705		26311	426	4176	48036
	Totals	1426	36876		89845	1454	14260	143861
	Un a	221	4417		13913	225	2208	20984
	Un na	52	2086		3285	53	521	5997
	Totals	273	6503		17198	278	2729	26981
	Un a	29	576		1812	29	288	2734
	Totals	29	576		1812	29	288	2734
	Totals							
	Totals							

139 Real Estate

110-27

Birchwood Shores

Assessment Roll and Tax List of Real Property in the Town of Julpa

* Indicate Type of Property: R-Residential, C-Commercial, I-Industrial, U-Utility, F-Farm, L-Lakeshore, T-Timber, M-Mineral

Form 500 (55) JULY-1956 REVISED, MINNAPOLIS

IN WHOSE NAME ASSESSED	TO WHOM TRANSFERRED	DESCRIPTION OF PROPERTY				TRUE AND FULL VALUATIONS										FINAL EQUALIZED VALUE			
		SUBDIVISION	Sec. or Lot	Town or Block	Rng.	Number of Acres of Land	No. School District	Indicate Homestead Tax or No	Indicate Agricultural Property or No	Indicate Type of Property	RURAL		ALL OTHER				MACHINERY Permanently Attached to Real Estate	TOTAL ASSESSED VALUE	Total Assessed Value as Equalized by the Board of Review
											LAND Exclusive of Structures and Improvements	BUILDINGS and Other Structures	MACHINERY Permanently Attached to Real Estate	TOTAL True and Full Value	Homestead Up to \$4,000 20%				
State of Minnesota		1	NE 1/4 of NE 1/4			3213927													
State of Minnesota		2	NW 1/4 of NE 1/4																
State of Minnesota		3	SW 1/4 of NE 1/4																
State of Minnesota		4	SE 1/4 of NE 1/4																
		5																	
State of Minnesota		6	NE 1/4 of NW 1/4																
State of Minnesota		7	NW 1/4 of NW 1/4																
State of Minnesota		8	SW 1/4 of NW 1/4																
State of Minnesota		9	SE 1/4 of NW 1/4																
		10																	
State of Minnesota		11	NE 1/4 of SW 1/4																
State of Minnesota		12	NW 1/4 of SW 1/4																
State of Minnesota		13	SW 1/4 of SW 1/4																
State of Minnesota		14	SE 1/4 of SW 1/4																
		15																	
State of Minnesota		16	NE 1/4 of SE 1/4																
State of Minnesota		17	NW 1/4 of SE 1/4																
State of Minnesota		18	SW 1/4 of SE 1/4																
State of Minnesota		19	SE 1/4 of SE 1/4																
		20																	

Cass County, Minnesota, for Taxes for the Year 1957.

SOLD FOR TAXES	VALUATIONS BY SCHOOL DISTRICTS AS EQUALIZED BY DEPARTMENT OF TAXATION						Tax including State Homestead	State Tax on Non-Homestead	SPECIAL TAXES	TOTAL TAXES	PAID	WHEN PAID	Number of Receipt	March Settlement 1958	June Settlement 1958	Penalty	November Settlement 1958	Penalty	Collections to First Monday in January 1959	Penalty	Delinquent on First Monday in January 1959	Total Delinquent Tax and Penalty	REMARKS
	District No.	District No.	District No.	District No.	District No.	District No.																	
	Rate	Rate	Rate	Rate	Rate	Rate																	
1																							
2																							
3																							
4																							
5																							
6																							
7																							
8																							
9																							
10																							
11																							
12																							
13																							
14																							
15																							
16																							
17																							
18																							
19																							
20																							

110-27

Birchwood Stores

Assessment Roll and Tax List of Real Property in the Town of Dulope

Indicate Type of Property: R-Residential, C-Commercial, I-Industrial, U-Utility, F-Farm, L-Lakeshore, T-Timber, M-Mineral

Cass County, Minnesota, for Taxes for the Year 1957.

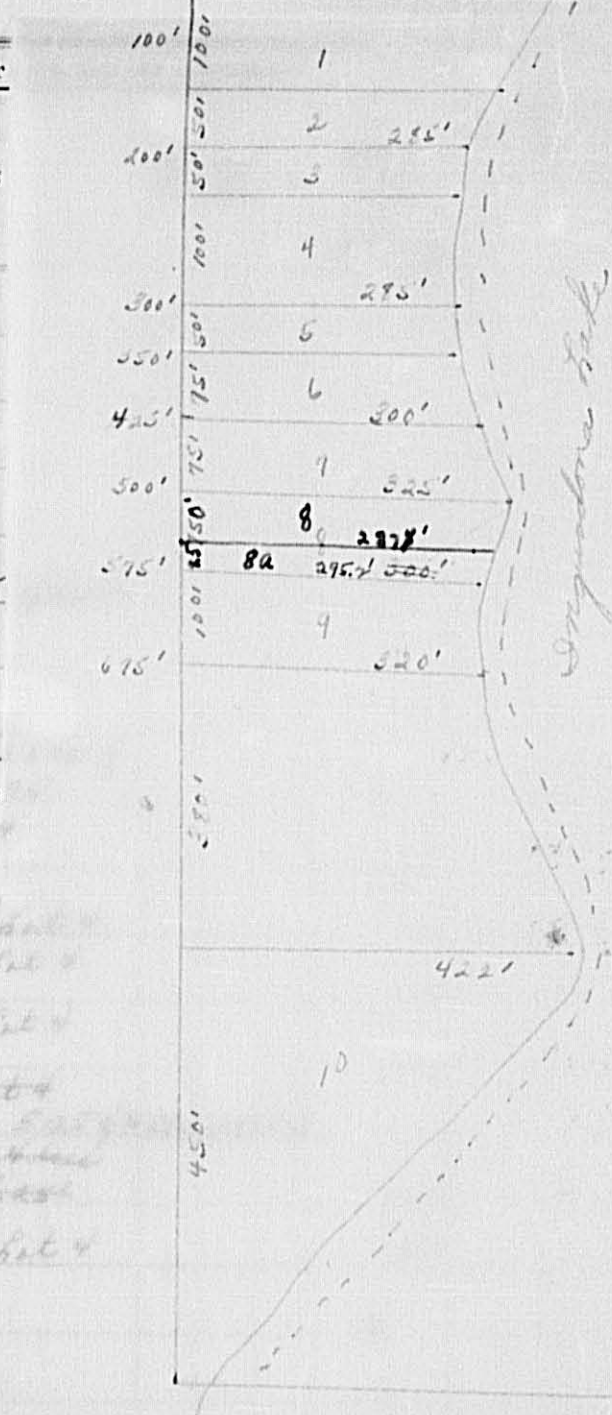
Table with columns: IN WHOSE NAME ASSESSED, TO WHOM TRANSFERRED, DESCRIPTION OF PROPERTY, TRUE AND FULL VALUATIONS, ASSESSED VALUATIONS, VALUATIONS BY SCHOOL DISTRICTS AS EQUALIZED BY DEPARTMENT OF TAXATION, TAXES, PAID, WHEN PAID, Number of Receipt, March Settlement 1958, June Settlement 1958, November Settlement 1958, Collections to First Monday in January 1959, Delinquent on First Monday in January 1959, Total Delinquent Tax and Penalty, REMARKS.

Assessment Roll and Tax List of

Cass County, Minnesota, for Taxes for the Year 1957.

Form 501 (56) MLLM-SAY COMPANY, MINNEAPOLIS

IN WHOSE NAME ASSESSED	TO WHOM TRANSFERRED	DESCRIPT
		SUBDIVISION
		1 NE 1/4 of NE 1/4
		2 NW 1/4 of NE 1/4
		3 SW 1/4 of NE 1/4
		4 SE 1/4 of NE 1/4
John I. + Gloria Graham, et al		5 approx. S. 25' of N. 57 1/2'
		6 NE 1/4 of NW 1/4
		7 NW 1/4 of NW 1/4
Roland Edwards		8 S. 450' x E. 450' x sec. 4 NW 1/4 of NW 1/4 of 27.6
Clarence E. + Edigabeth M. Strusak		9 S. 50' of N. 150' of sec. 4 SE 1/4 of NW 1/4
"		10 S. 50' of N. 200' of NW 1/4 of NW 1/4
Guy Wm. + Sella Thompson		11 S. 150' of N. 350' of NW 1/4 of NW 1/4
Larathy E. Workman		12 S. 75' of N. 425' of NW 1/4 of SW 1/4
D. W. + Leona Tate		13 S. 75' of N. 500' of SW 1/4 of SW 1/4
"		14 S. 75' of N. 515' of SE 1/4 of SW 1/4
Marvin Olson + Iris Larson		15 S. 100' of N. 675' of NW 1/4 of NE 1/4 of SE 1/4
Byron + Irma Sherwood		16 S. 450' of NW 1/4 of NE 1/4 of SE 1/4
		17 NW 1/4 of SE 1/4
		18 SW 1/4 of SE 1/4
		19 SE 1/4 of SE 1/4
		20



1. Roland Edwards 6.0 ac.
2. Clarence E. + Edigabeth M. Strusak 7.5 ac.
3. " " " .25 ac.
4. Guy Wm. + Sella Thompson .50 ac.
5. " " " .25 ac.
6. Larathy E. Workman .50 ac.
7. D. W. + Leona Tate 1.0 ac.
8. " " " .50 ac.
9. Marvin Olson + Iris Larson .75 ac.
10. Byron + Irma Sherwood 2.00 ac.

U-Utility, F-Farm, L-Lakeshore, T-Timber, M-Mineral

ASSESSED VALUATIONS				
Timber Land Class 3c 20%	ALL OTHER Homestead Up to \$1,000 25%	Over \$4,000 and Non-Homestead 40%	MACHINERY Permanently Attached to Real Estate 3 3/8%	TOTAL ASSESSED VALUE
Dollars	Dollars	Dollars	Dollars	Dollars

Total Assessed Value as Equalized by the Board of Review	FINAL EQUALIZED VALUE
Dollars	Dollars

SOLD FOR TAXES	VALUATIONS BY SCHOOL DISTRICTS AS EQUALIZED BY DEPARTMENT OF TAXATION						Tax including State Homestead	State Tax on Non-Homestead	SPECIAL TAXES	TOTAL TAXES	PAID	WHEN PAID	Number of Receipt	March Settlement 1958	June Settlement 1958	Penalty	November Settlement 1958	Penalty	Collections to First Monday in January 1959	Penalty	Delinquent on First Monday in January 1959	Total Delinquent Tax and Penalty	REMARKS
	District No. Rate Mills	District No. Rate Mills	District No. Rate Mills	District No. Rate Mills	District No. Rate Mills	District No. Rate Mills																	
	Dollars	Dollars	Dollars	Dollars	Dollars	Dollars	\$ cts.	\$ cts.	\$ cts.	\$ cts.		Month Day Year	\$ cts.	\$ cts.	\$ cts.	\$ cts.	\$ cts.	\$ cts.	\$ cts.	\$ cts.	\$ cts.	\$ cts.	

1																							
2																							
3																							
4																							
5								162	04		166											166 183	
6																							
7																							
8	SOLD FOR TAXES							200			200												2nd HALF PAID SEP 30 1958 1473.5 1st HALF PAID MAY 31 1958 99.80
9								216	06		222												1.00 100-
10								1750	42		1792												2.22 5480
11								82	54		2208												11331 1792 5877
12								67	44		1804												11789 1848 5847
13								58	38		1562												11793 1600 14 under col.
14								12	08		324												11993 331 331
15								17	12		458												11814 470 470
16								183	120		4928												8187 5048 5881
17																							
18																							
19																							
20																							12-50 48 498 506 200 13412 13612 328 13940 1.8673 1.00 166 01 undercollected

Assessment Roll and Tax List of Real Property in the Town of Inglewood, Cass County, Minnesota, for Taxes for the Year 1957.

Cass County, Minnesota, for Taxes for the Year 1957.

* Indicate Type of Property: R-Residential, C-Commercial, I-Industrial, U-Utility, F-Farm, L-Lakeshore, T-Timber, M-Mineral

Table with columns: IN WHOSE NAME ASSESSED, TO WHOM TRANSFERRED, DESCRIPTION OF PROPERTY, TRUE AND FULL VALUATIONS, ASSESSED VALUATIONS, VALUATIONS BY SCHOOL DISTRICTS AS EQUALIZED BY DEPARTMENT OF TAXATION, Tax including State Tax on Non-Homestead, SPECIAL TAXES, TOTAL TAXES, PAID, WHEN PAID, Number of Receipt, March Settlement 1958, June Settlement 1958, Penalty, November Settlement 1958, Penalty, Collections to First Monday in January 1959, Penalty, Delinquent on First Monday in January 1959, Total Delinquent Tax and Penalty, REMARKS.

(Continued on next page)

466 06

Handwritten calculations: 4581, 274, 855, 270 = 544, 270 = 1125, 29088

22998 5946

Assessment Roll and Tax List of Real Property in the Town of Delphi

Indicate Type of Property: R-Residential, C-Commercial, I-Industrial, U-Utility, F-Farm, L-Lakeshore, T-Timber, M-Mineral

Form 500 (56) MARS-STATE OF MINNESOTA

Table with columns: IN WHOSE NAME ASSESSED, TO WHOM TRANSFERRED, SUBDIVISION, TRUE AND FULL VALUATIONS, ASSESSED VALUATIONS, FINAL EQUALIZED VALUE. Includes handwritten entries for various property owners like Carl O. & Edith Peterson, Gordon G. Postweiler, etc.

Cass County, Minnesota, for Taxes for the Year 1957.

Table with columns: VALUATIONS BY SCHOOL DISTRICTS AS EQUALIZED BY DEPARTMENT OF TAXATION, TAXES, PAID, WHEN PAID, Number of Receipt, March Settlement, June Settlement, November Settlement, Collections to First Monday in January, Delinquent on First Monday in January, Total Delinquent Tax and Penalty, REMARKS. Includes handwritten tax amounts and payment dates.

139-27 140-27

East's Shores

Birchwood Shores

Assessment Roll and Tax List of Real Property in the Town of Delphos

* Indicate Type of Property: R-Residential, C-Commercial, I-Industrial, U-Utility, F-Farm, L-Lakeshore, T-Timber, M-Mineral

Form SCD (56) JULY-STATE BOARD OF TAXATION, MINNEAPOLIS

Table with columns: IN WHOSE NAME ASSESSED, TO WHOM TRANSFERRED, SUBDIVISION, TRUE AND FULL VALUATIONS, ASSESSED VALUATIONS, TOTAL ASSESSED VALUE, and FINAL EQUALIZED VALUE. Includes handwritten entries for Wesley E. & Marion J. Carpenter and Eldon R. & Martha Oberfell.

Cass County, Minnesota, for Taxes for the Year 1957.

Table with columns: SOLD FOR TAXES, VALUATIONS BY SCHOOL DISTRICTS AS EQUALIZED BY DEPARTMENT OF TAXATION, Tax including State Homestead, State Tax on Non-Homestead, SPECIAL TAXES, TOTAL TAXES, PAID, WHEN PAID, Number of Receipt, March Settlement 1958, June Settlement 1958, Penalty, November Settlement 1958, Penalty, Collections to First Monday in January 1959, Delinquent on First Monday in January 1959, Total Delinquent Tax and Penalty, and REMARKS. Includes handwritten entries for various districts and payment dates.

Assessment Roll and Tax List of Real Property in the Town of Inelixa

Indicate Type of Property: R-Residential, C-Commercial, I-Industrial, U-Utility, F-Farm, L-Lakeshore, T-Timber, M-Mineral

Cass County, Minnesota, for Taxes for the Year 1957.

Table with columns for IN WHOSE NAME ASSESSED, TO WHOM TRANSFERRED, DESCRIPTION OF PROPERTY, TRUE AND FULL VALUATIONS, ASSESSED VALUATIONS, VALUATIONS BY SCHOOL DISTRICTS, TAXES, PAID, WHEN PAID, Number of Receipt, March Settlement, June Settlement, November Settlement, Collections to First Monday in January 1959, Delinquent on First Monday in January 1959, Total Delinquent Tax and Penalty, and REMARKS.

Assessment Roll and Tax List of Real Property in the Town of LeLippe

Indicate Type of Property: R-Residential, C-Commercial, I-Industrial, U-Utility, F-Farm, L-Lakeshore, T-Timber, M-Mineral

Form 5CD (56) WISCONSIN DEPARTMENT OF REVENUE

Table with columns: IN WHOSE NAME ASSESSED, TO WHOM TRANSFERRED, DESCRIPTION OF PROPERTY, TRUE AND FULL VALUATIONS, ASSESSED VALUATIONS, and FINAL EQUALIZED VALUE.

Cass County, Minnesota, for Taxes for the Year 1957.

Table with columns: VALUATIONS BY SCHOOL DISTRICTS AS EQUALIZED BY DEPARTMENT OF TAXATION, TAXES, PAID, WHEN PAID, and REMARKS.

Assessment Roll and Tax List of Real Property in the Town of Duluth, Cass County, Minnesota, for Taxes for the Year 1957.

Cass County, Minnesota, for Taxes for the Year 1957.

Form 500 (56) WISCONSIN DEPARTMENT OF REVENUE

* Indicate Type of Property: R-Residential, C-Commercial, I-Industrial, U-Utility, F-Farm, L-Lakeshore, T-Timber, M-Mineral

Main table with columns: IN WHOSE NAME ASSESSED, TO WHOM TRANSFERRED, DESCRIPTION OF PROPERTY, TRUE AND FULL VALUATIONS, ASSESSED VALUATIONS, VALUATIONS BY SCHOOL DISTRICTS AS EQUALIZED BY DEPARTMENT OF TAXATION, TAXES, PAID, WHEN PAID, etc.

William Martin

State of Minnesota

State of Minnesota

State of Minnesota

State of Minnesota

State of Minnesota

State of Minnesota

The Northwest Paper Co.

State of Minnesota

State of Minnesota

State of Minnesota

The Northwest Paper Co.

State of Minnesota

State of Minnesota

5900

165

165

Emer's Stores

Birchwood Stores

Assessment Roll and Tax List of Real Property in the Town of Duluge

Indicate Type of Property: R-Residential, C-Commercial, I-Industrial, U-Utility, F-Farm, L-Lakeshore, T-Timber, M-Mineral

Form 5C (56) BILLS-BAYNE COMPANY, MINNEAPOLIS

Table with columns: IN WHOSE NAME ASSESSED, TO WHOM TRANSFERRED, DESCRIPTION OF PROPERTY, TRUE AND FULL VALUATIONS, ASSESSED VALUATIONS, and FINAL EQUALIZED VALUE.

Archie G. & Julia E. Bailey
Herbert H. & Mae J. Westphal
Clifton W. Hanson & Edward E. Hanson
Loren W. Swellherger et al
Melton E. & Estelle E. Christison
Luen J. & Irene Marie Olson
James B. & Edna G. Waltrip
Melton E. & Estelle E. Christison
Bernice M. Gerstner

Birchwood Shores
7 1/2 of lot 1 - Sec. 8-140-27

Sec. or Lot, Town or Block, Rng., Number of Acres of Land, No. School District, Indicate Homestead Yes or No, Indicate Agricultural Yes or No, Indicate Type of Property, LAND, BUILDINGS, MACHINERY, TOTAL True and Full Value, RURAL, ALL OTHER, MACHINERY, TOTAL ASSESSED VALUE, Total Assessed Value as Equalized by the Board of Review, FINAL EQUALIZED VALUE.

Cass County, Minnesota, for Taxes for the Year 1957.

Table with columns: SOLD FOR TAXES, VALUATIONS BY SCHOOL DISTRICTS AS EQUALIZED BY DEPARTMENT OF TAXATION, Tax including State Homestead, State Tax on Non-Homestead, SPECIAL TAXES, TOTAL TAXES, PAID, WHEN PAID, Number of Receipt, March Settlement 1958, June Settlement 1958, Penalty, November Settlement 1958, Penalty, Collections to First Monday in January 1959, Penalty, Delinquent on First Monday in January 1959, Total Delinquent Tax and Penalty, REMARKS.

1 60 16 16 40 16 56 1 PAID IN FULL MAY 3 1 1958 11795 16 56
2 1 26 - 26 2 PAID IN FULL MAR 2 6 1958
3 173 38 52 44 39 46 3 PAID IN FULL MAR 2 6 1958 444 39 98
4 1 26 - 26 4 PAID IN FULL MAR 2 6 1958
5 48 12 92 32 13 24 5 PAID IN FULL MAY 3 1 1958 11788 13 24
6 58 15 62 38 16 00 6 PAID IN FULL MAY 3 1 1958 13230 16 00
7 58 15 62 38 16 00 7 PAID IN FULL MAY 3 1 1958 11784 16 00
8 58 15 62 38 16 00 8 PAID IN FULL MAY 3 1 1958 11815 16 00
9 217 58 44 144 59 88 9 PAID IN FULL MAY 3 1 1958 11773 59 88

644 17342 424 17766 17766

Assessment Roll and Tax List of Real Property in the Town of Duluth

Indicate Type of Property: R-Residential, C-Commercial, I-Industrial, U-Utility, F-Farm, L-Lakeshore, T-Timber, M-Mineral

Cass County, Minnesota, for Taxes for the Year 1957.

Table with columns for IN WHOSE NAME ASSESSED, TO WHOM TRANSFERRED, DESCRIPTION OF PROPERTY, TRUE AND FULL VALUATIONS, ASSESSED VALUATIONS, VALUATIONS BY SCHOOL DISTRICTS AS EQUALIZED BY DEPARTMENT OF TAXATION, and PAID WHEN PAID. Includes handwritten entries for property owners like 'Caren & Rena Fairbanks' and 'Jason R. & Christine Eddy'.

110-27

Ewen's Shores

Birchwood Shores

432, 116 34 286 119 20 16 00 98 50 4 70

