

ASSESSMENT & TAX LIST

Trelipe

1951

Assessment of

NAME OF OWNER

Treasurer's Office, Cass County, Minnesota

RECEIVED this, the first Monday (being the 1st day) of January, A. D. 1952, of L. C. Peterson, Auditor of said County, Minnesota, the Tax List of all Taxable Real and Personal Property in the Town of Delpe in said County for the year A. D. 1951, as specified above and amounting to _____ Dollars

Paul D. Jewell by F.M.P. County Treasurer.

Office of County Treasurer, Cass County, Minnesota

To L. C. Peterson, County Auditor: Jan 5, 1952.

Sir:—I herewith return to you the Tax List for the Town of Delpe in said County for the year 1951, heretofore received from you. I certify that I have compared the same with the duplicate receipts in your office, and have written opposite the amount of each tax so received the words "First Quarter Paid", "Second Quarter Paid", "Third Quarter Paid" or "Paid in full" as the case may be, and the number of my receipt given in discharge of said tax, and each tract or lot of real property against which the taxes remain unpaid is delinquent for said year.

Yours respectfully, Paul D. Jewell by F.M.P. County Treasurer.

Auditor's Office, Cass County, Minnesota

I, _____ Auditor of said County, and State of Minnesota, do hereby certify that the following is a correct list of the Taxes levied on the Real and Personal Property in the _____ of _____ for the year 1951.

WITNESS my hand and official seal, the _____ day of _____ 1952. (SEAL) _____ County Auditor.

Auditor's Office, Cass County, Minnesota

I hereby certify that on the first Monday in January 1952, I received of _____ County Treasurer, the Tax List of the _____ of _____ in said County for the year 1951; that I have compared the said list with the Statements received for by said Treasurer, which are on file in my office, and that each tract or lot of real property therein against which the taxes, or any part thereof, remains unpaid are delinquent for said year.

(SEAL) _____ County Auditor.

COLLECTIONS OF TAXES OF 195

OF CASS COUNTY, MINNESOTA

Assessment of

NAME OF OWNER

1

2

3

4

5

6

7

8

FUNDS	MARCH SETTLEMENT 1952	JUNE SETTLEMENT 1952	NOV. SETTLEMENT 1952	Amount Collected from Nov. 1952 to First Monday in Jan. 1953	REDUCTIONS	Total Reductions and Collected	BALANCE UNCOLLECTED	ADDITIONS	Total Uncollected to First Monday in January, 1953
State - Non-Homestead,	720	2214	720	52					
State - Homestead,	1280	7840	1963	133					
County Revenue,	7114	26902	10909	737					
County Road and Bridge,	3739	14139	5733	387					
County Welfare,	11606	43888	17786	1203					
County Bond and Interest,	4492	16986	6888	465					
Town Revenue,	1298	4909	1991	135					
Town Road and Bridge,	3895	17128	5972	404					
Town Drag,	260	982	399	27					
Town State Loan,									
School Local 1 Mill,	259	982	399	27					
School Special,	9736	22752	11512	536					
School State Loan,									
Deficiency	11684	44183	17916	1211					
Tuition									
Transportation	778	2945	1195	81					
C.O.	2596	9818	3981	269					
B. & L.	1298	4909	1991	135					
	60455	245177	89364	5802					

	LOCAL 1 MILL	SPECIAL	STATE LOAN	Transp.	Def.	C.O.	B. & L.	TOTALS
MARCH SETTLEMENT								
School District No. A-Uu	77	950		142	2137	475	237	3988
Ha-Uu	212	8486		636	9547	2121	1861	22063
Totals	289	9436		778	11684	2596	1298	26051
JUNE SETTLEMENT								
School District No. A-Uu	826	16523		2478	37177	8261	4131	69396
Ha-Uu	156	6229		467	7006	1557	778	16193
Totals	982	22752		2945	44183	9818	4909	85589
NOVEMBER SETTLEMENT								
School District No. A-Uu	236	4411		662	9925	2205	1103	18522
Ha-Uu	778	7101		533	7991	1776	988	18467
Totals	399	11512		1195	17916	3981	1991	36994
NOVEMBER to JANUARY								
School District No. A-Uu	27	536		81	1211	269	135	2259
Totals	27	536		81	1211	269	135	2259
ADDITIONS								
School District No.								
Totals								
REDUCTIONS								
School District No.								
Totals								

Real

110-27

Shores

Shores

Shores

Assessment Roll and Tax List of Real Property in the Second of Deluge

Form 500 - 1948 - 1949 EDITION, MINNEAPOLIS

IN WHOSE NAME ASSESSED	TO WHOM TRANSFERRED	DESCRIPTION OF PROPERTY					TRUE AND FULL VALUATIONS				ASSESSED VALUATIONS					FINAL EQUALIZED VALUE		
		SUBDIVISION	Sec. or Lot	Town or Block	Rng.	Number of Acres of Land	LAND Exclusive of Structures and Improvements	BUILDINGS and Other Structures	MACHINERY Permanently Attached to Real Estate	TOTAL True and Full Value	RURAL		ALL OTHER		MACHINERY Permanently Attached to Real Estate		TOTAL ASSESSED VALUE	Total Assessed Value as Equalized by the Board of Review
											Acres 100ths	Homestead Up to \$4,000 20%	Over \$4,000 and Non-Homestead 33 1/3%	Homestead Up to \$4,000 25%				
State of Minnesota		NE 1/4 of NE 1/4																
State of Minnesota		NW 1/4 of NE 1/4																
State of Minnesota		SW 1/4 of NE 1/4																
State of Minnesota		SE 1/4 of NE 1/4																
State of Minnesota																		
State of Minnesota		NE 1/4 of NW 1/4																
State of Minnesota		NW 1/4 of NW 1/4																
State of Minnesota		SW 1/4 of NW 1/4																
State of Minnesota		SE 1/4 of NW 1/4																
State of Minnesota																		
State of Minnesota		NE 1/4 of SW 1/4																
State of Minnesota		NW 1/4 of SW 1/4																
State of Minnesota		SW 1/4 of SW 1/4																
State of Minnesota		SE 1/4 of SW 1/4																
State of Minnesota																		
State of Minnesota		NW 1/4 of SE 1/4																
State of Minnesota		SW 1/4 of SE 1/4																
State of Minnesota		SE 1/4 of SE 1/4																
State of Minnesota																		

Cass County, Minnesota, for Taxes for the Year 1951.

SOLD FOR TAXES	VALUATIONS BY SCHOOL DISTRICTS AS EQUALIZED BY DEPARTMENT OF TAXATION						Tax including State Homestead	State Tax on Non-Homestead	SPECIAL TAXES	TOTAL TAXES	PAID	WHEN PAID	Number of Receipt	March Settlement 1952	June Settlement 1952	Penalty	November Settlement 1952	Penalty	Collections to First Monday in January 1953	Penalty	Delinquent on First Monday in January 1953	Total Delinquent Tax and Penalty	REMARKS
	District No.	District No.	District No.	District No.	District No.	District No.																	
	Rate	Rate	Rate	Rate	Rate	Rate																	
	Mills	Mills	Mills	Mills	Mills	Mills																	
1																							
2																							
3																							
4																							
5																							
6																							
7																							
8																							
9																							
10																							
11																							
12																							
13																							
14																							
15																							
16																							
17																							
18																							
19																							
20																							

110-27

Shores

Shores

Shores

Assessment Roll and Tax List of Real Property in the Town of Deluge

Form 500 - MINN. STATE DEPT. OF TAXATION, MINNEAPOLIS

IN WHOSE NAME ASSESSED	TO WHOM TRANSFERRED	DESCRIPTION OF PROPERTY				TRUE AND FULL VALUATIONS				ASSESSED VALUATIONS					FINAL EQUALIZED VALUE			
		SUBDIVISION	Sec. or Lot	Town or Block	Rng.	Number of Acres of Land	LAND Exclusive of Structures and Improvements	BUILDINGS and Other Structures	MACHINERY Permanently Attached to Real Estate	TOTAL True and Full Value	RURAL		ALL OTHER			MACHINERY Permanently Attached to Real Estate	TOTAL ASSESSED VALUE	Total Assessed Value as Equalized by the Board of Review
											Acres	100ths	Homestead Up to \$4,000 20%	Over \$4,000 and Non-Homestead 33 1/3%				
State of Minnesota		1	NE 1/4 of NE 1/4	30 1/2 27														
State of Minnesota		2	NW 1/4 of NE 1/4															
State of Minnesota		3	SW 1/4 of NE 1/4															
State of Minnesota		4	SE 1/4 of NE 1/4															
State of Minnesota		5																
State of Minnesota		6	NE 1/4 of NW 1/4															
State of Minnesota		7	NW 1/4 of NW 1/4															
State of Minnesota		8	SW 1/4 of NW 1/4															
State of Minnesota		9	SE 1/4 of NW 1/4															
State of Minnesota		10																
State of Minnesota		11	NE 1/4 of SW 1/4															
State of Minnesota		12	NW 1/4 of SW 1/4															
State of Minnesota		13	SW 1/4 of SW 1/4															
State of Minnesota		14	SE 1/4 of SW 1/4															
State of Minnesota		15																
State of Minnesota		16	NE 1/4 of SE 1/4															
State of Minnesota		17	NW 1/4 of SE 1/4															
State of Minnesota		18	SW 1/4 of SE 1/4															
State of Minnesota		19	SE 1/4 of SE 1/4															
		20																

Cass County, Minnesota, for Taxes for the Year 1951.

SOLD FOR TAXES	VALUATIONS BY SCHOOL DISTRICTS AS EQUALIZED BY DEPARTMENT OF TAXATION						Tax including State Homestead	State Tax on Non-Homestead	SPECIAL TAXES	TOTAL TAXES	PAID	WHEN PAID	Number of Receipt	March Settlement 1952	June Settlement 1952	Penalty 1952	November Settlement 1952	Penalty 1952	Collections to First Monday in January 1953	Penalty	Delinquent on First Monday in January 1953	Total Delinquent Tax and Penalty	REMARKS	
	District No.	District No.	District No.	District No.	District No.	District No.																		
	Rate	Rate	Rate	Rate	Rate	Rate																		
1																								
2																								
3																								
4																								
5																								
6																								
7																								
8																								
9																								
10																								
11																								
12																								
13																								
14																								
15																								
16																								
17																								
18																								
19																								
20																								

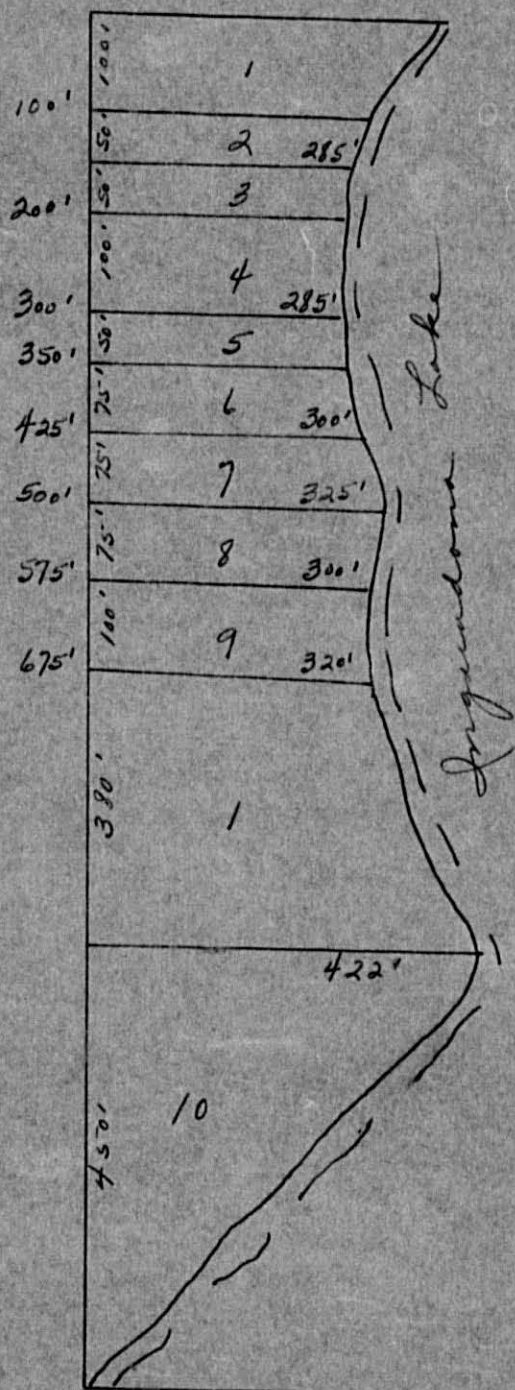
100-27

Dyer's Stores

Brookwood Stores

Brookman's Lumber Yard

Lot 4 Sec. 5-140-27



1. Roland Edwards 6.0 ac.
2. Clarence + Elizabeth Stresnak .75 ac.
3. " " " .25 ac.
4. Gary W. + Bella Thompson .50 ac.
5. " " " .25 ac.
6. ~~Russell + Southworth~~ Theron + Marcie Jacobson .50 ac.
7. Jesse L. + Dorothy E. Workman 1.0 ac.
8. " " " .50 ac.
9. Marvin Olson + Irene Larson .75 ac.
10. Byron Sherwood 2.00 ac.



Assessment Roll and Tax List of Real Property in the Town of Delize

Form 50D

IN WHOSE NAME ASSESSED	TO WHOM TRANSFERRED	DESCRIPTION OF PROPERTY				No. School District	Indicate Homestead Yes or No	Indicate Agricultural Yes or No	TRUE AND FULL VALUATIONS				ASSESSED VALUATIONS					FINAL EQUALIZED VALUE			
		SUBDIVISION	Sec. of Lot	Town or Block	Rng.				Number of Acres of Land	LAND Exclusive of Structures and Improvements	BUILDINGS and Other Structures	MACHINERY Permanently Attached to Real Estate	TOTAL True and Full Value	RURAL		ALL OTHER			MACHINERY Permanently Attached to Real Estate	TOTAL ASSESSED VALUE	Total Assessed Value as Equalized by the Board of Review
														Acres	100ths	Homestead Up to \$4,000	Over \$4,000 and Non-Homestead				
<u>MARR</u> <u>Ralph C. Marr</u>		NE 1/4 of NE 1/4				14 1/4 27	40														
State of Minnesota		NW 1/4 of NE 1/4																			
State of Minnesota		SW 1/4 of NE 1/4																			
<u>John A. + Alice J. Gilmer</u>		SE 1/4 of NE 1/4					40														
State of Minnesota		NE 1/4 of NW 1/4																			
State of Minnesota		NW 1/4 of NW 1/4																			
State of Minnesota		SW 1/4 of NW 1/4																			
State of Minnesota		SE 1/4 of NW 1/4																			
State of Minnesota		NE 1/4 of SW 1/4																			
State of Minnesota		NW 1/4 of SW 1/4																			
State of Minnesota		SW 1/4 of SW 1/4																			
<u>Ernest H. + Eva Hoppe</u>		SE 1/4 of SW 1/4																			
State of Minnesota		NE 1/4 of SE 1/4					40														
<u>John A. + Alice J. Gilmer</u>		NW 1/4 of SE 1/4					40														
<u>Ernest + Eva Hoppe</u>		SW 1/4 of SE 1/4					37 20														
State of Minnesota		SE 1/4 of SE 1/4					40														
<u>John Gilmer</u>																					
							331 00														

Cass County, Minnesota, for Taxes for the Year 1951.

SOLD FOR TAXES	VALUATIONS BY SCHOOL DISTRICTS AS EQUALIZED BY DEPARTMENT OF TAXATION						Tax including State Homestead	State Tax on Non-Homestead	SPECIAL TAXES	TOTAL TAXES	PAID	WHEN PAID	Number of Receipt	March Settlement 1952	June Settlement 1952	Penalty	November Settlement 1952	Penalty	Collections to First Monday in January 1953	Penalty	Delinquent on First Monday in January 1953	Total Delinquent Tax and Penalty	REMARKS	
	District No. 1	District No. 2	District No. 3	District No. 4	District No. 5	District No. 6																		
	Rate	Rate	Rate	Rate	Rate	Rate																		
1	21 36						7 70		7 70	1														
2										2														
3										3														
4	21 40						8 54		8 54	4														
5										5														
6										6														
7										7														
8										8														
9										9														
10										10														
11										11														
12										12														
13										13														
14										14														
15										15														
16	21 56									11 96														
17	21 40									8 54														
18	21 92									1 966														
19	21 92									1 966														
20	21 356									76 06														

110-27

Dwight's Shores

Birchwood Shores

Brookman's Linden Beach

7/20/51 1951

2nd Half Paid OCT 31 1952 } 15730
 1st Half Paid MAY 31 1952 }
 2nd Half Paid OCT 31 1952 } 11766
 1st Half Paid MAY 31 1952 }

11 966 1316

19 666 2163

1410 1410

4786

Assessment Roll and Tax List of Real Property in the Town of Duluth of Duluth

Form SCD - MILLER-WATTS COMPANY, MINNEAPOLIS

IN WHOSE NAME ASSESSED	TO WHOM TRANSFERRED	DESCRIPTION OF PROPERTY				TRUE AND FULL VALUATIONS							FINAL EQUALIZED VALUE					
		SUBDIVISION	Sec. or Lot	Town or Block	Rng.	Number of Acres of Land	Machinery Permanently Attached to Real Estate	LAND Exclusive of Structures and Improvements	BUILDINGS and Other Structures	TOTAL True and Full Value	RURAL			ALL OTHER		Machinery Permanently Attached to Real Estate	TOTAL ASSESSED VALUE	Total Assessed Value as Equalized by the Board of Review
											Acres	100ths		Homestead Up to \$4,000 20%	Over \$4,000 and Non-Homestead 33 1/3%			
State of Minnesota		NE 1/4 of NE 1/4		16 1/4 27														
State of Minnesota		NW 1/4 of NE 1/4																
State of Minnesota		SW 1/4 of NE 1/4																
State of Minnesota		SE 1/4 of NE 1/4																
State of Minnesota		NE 1/4 of NW 1/4																
State of Minnesota		NW 1/4 of NW 1/4																
State of Minnesota		SW 1/4 of NW 1/4																
State of Minnesota		SE 1/4 of NW 1/4																
State of Minnesota		NE 1/4 of SW 1/4																
State of Minnesota		NW 1/4 of SW 1/4																
State of Minnesota		SW 1/4 of SW 1/4																
State of Minnesota		SE 1/4 of SW 1/4																
State of Minnesota		NE 1/4 of SE 1/4																
State of Minnesota		NW 1/4 of SE 1/4																
State of Minnesota		SW 1/4 of SE 1/4																
State of Minnesota		SE 1/4 of SE 1/4																

Cass County, Minnesota, for Taxes for the Year 1951.

SOLD FOR TAXES	VALUATIONS BY SCHOOL DISTRICTS AS EQUALIZED BY DEPARTMENT OF TAXATION						Tax including State Homestead	State Tax on Non-Homestead	SPECIAL TAXES	TOTAL TAXES	PAID	WHEN PAID	Number of Receipt	March Settlement 1952	June Settlement 1952	Penalty November Settlement 1952	Penalty Collections to First Monday in January 1953	Penalty Delinquent on First Monday in January 1953	Total Delinquent Tax and Penalty	REMARKS
	District No.	District No.	District No.	District No.	District No.	District No.														
	Rate	Rate	Rate	Rate	Rate	Rate														
1										1										
2										2										
3										3										
4										4										
5										5										
6										6										
7										7										
8										8										
9										9										
10										10										
11										11										
12										12										
13										13										
14										14										
15										15										
16										16										
17										17										
18										18										
19										19										
20										20										

140-27

Wright's Shores Birchwood Shores Deokman's Linden Beach

