

Assessment & Tax List - 1963

Torrey































Assessment Roll and Tax List of Real Property in the Town of Torrey

Form 500 - MILLER-DAVIS CO., MINNEAPOLIS

Real Estate

143-25

Table with columns: IN WHOSE NAME ASSESSED, DESCRIPTION OF PROPERTY, TRUE AND FULL VALUATIONS, ASSESSED VALUATIONS, and FINAL EQUALIZED VALUE. Includes entries for Ella Boileau, Laura B. Boileau, and Charles H. + Myrtle Severson.

Cass County, Minnesota, for Taxes for the Year 1963.

Table with columns: SOLD FOR TAXES, VALUATIONS BY SCHOOL DISTRICTS AS EQUALIZED BY DEPARTMENT OF TAXATION, Tax including State Homestead, SPECIAL TAXES, TOTAL TAXES, PAID, WHEN PAID, Number of Receipt, March Settlement 1964, June Settlement 1964, Penalty, November Settlement 1964, Collections to First Monday in January 1965, Delinquent on First Monday in January 1965, Total Delinquent Tax and Penalty, REMARKS. Includes entries for districts 1 through 20.

HANSTEN'S REPLICATION

PERSONAL









Assessment Roll and Tax List of Real Property in the Town of Jorey, Cass County, Minnesota, for Taxes for the Year 1963.

Form SCD MILLER-DAVIS CO., MINNEAPOLIS

\* Indicate Type of Property: R-Residential, C-Commercial, I-Industrial, U-Utility, F-Farm, L-Lakeshore, T-Timber, M-Mineral

Table with columns: IN WHOSE NAME ASSESSED, DESCRIPTION OF PROPERTY, TRUE AND FULL VALUATIONS, ASSESSED VALUATIONS, VALUATIONS BY SCHOOL DISTRICTS AS EQUALIZED BY DEPARTMENT OF TAXATION, SOLD FOR TAXES, PAID, WHEN PAID, Number of Receipt, March Settlement 1964, June Settlement 1964, Penalty, November Settlement 1964, Penalty, Collections to First Monday in January 1965, Penalty, Delinquent on First Monday in January 1965, Total Delinquent Tax and Penalty, REMARKS.

HANISTER'S VERIFICATION PERSONAL



Assessment Roll and Tax List of Real Property in the Town of Jorrey, Cass County, Minnesota, for Taxes for the Year 1963.

Form 50D HILLER-DAVIS CO., MINNEAPOLIS

IN WHOSE NAME ASSESSED  
State of Minnesota  
Floyd P. Boileau

State of Minnesota  
State of Minnesota  
State of Minnesota  
State of Minnesota  
State of Minnesota  
State of Minnesota  
Sara J. + Daniel Grimsbo  
State of Minnesota  
State of Minnesota  
Robert V. + Marguerite Phipps

Table with columns: SUBDIVISION, DESCRIPTION OF PROPERTY, TRUE AND FULL VALUATIONS, ASSESSED VALUATIONS (RURAL, ALL OTHER), TOTAL ASSESSED VALUE, FINAL EQUALIZED VALUE.

Cass County, Minnesota, for Taxes for the Year 1963.

Table with columns: VALUATIONS BY SCHOOL DISTRICTS AS EQUALIZED BY DEPARTMENT OF TAXATION, TAXES (SOLD FOR, PAID, WHEN PAID), PAID, WHEN PAID, Number of Receipt, March Settlement, June Settlement, Penalty, November Settlement, Collections to First Monday in January 1965, Delinquent on First Monday in January 1965, Total Delinquent Tax and Penalty, REMARKS.

Real Estate

REGISTERED



Assessment Roll and Tax List of Real Property in the Town of Jorrey  
\* Indicate Type of Property: R-Residential, C-Commercial, I-Industrial, U-Utility, F-Farm, L-Lakeshore, T-Timber, M-Mineral

Form 5CD MILLER-DAVIS CO., MINNEAPOLIS

| IN WHOSE NAME ASSESSED | DESCRIPTION OF PROPERTY |                  |               |                         | No. School District | Indicate Homestead Yes or No | Agt. or Sea. Here Yes or No | Indicate Type of Property | TRUE AND FULL VALUATIONS                      |                                |   |                           | ASSESSED VALUATIONS |        |                             |  |                          |                             | TOTAL ASSESSED VALUE | Total Assessed Value as Equalized by the Board of Review | FINAL EQUALIZED VALUE |
|------------------------|-------------------------|------------------|---------------|-------------------------|---------------------|------------------------------|-----------------------------|---------------------------|---|--------------------------------|---|---------------------------|---------------------|--------|-----------------------------|--|--------------------------|-----------------------------|----------------------|--|-----------------------|
|                        | SUBDIVISION             | Sec. or Lot      | Town or Block | Number of Acres of Land |                     |                              |                             |                           | LAND Exclusive of Structures and Improvements | BUILDINGS and Other Structures | MACHINERY Permanently Attached to Real Estate | TOTAL True and Full Value | RURAL               |        | ALL OTHER                   |  |                          |                             |                      |  |                       |
|                        |                         |                  |               |                         |                     |                              |                             |                           |   |                                |   |                           | Acres               | 100ths | Homestead Up to \$4,000 20% | Over \$4,000 and Non-Homestead 33 1/3% | Timber Land Class 3e 20% | Homestead Up to \$4,000 25% |                      |  |                       |
| U. S. of America       | 1                       | NEW of NEW       | 18 143 25     |                         | Un                  |                              |                             |                           |   |                                |   |                           |                     |        |                             |  |                          |                             |                      |  |                       |
| State of Minnesota     | 2                       | NW 1/4 of NW 1/4 |               |                         |                     |                              |                             |                           |   |                                |   |                           |                     |        |                             |  |                          |                             |                      |  |                       |
| State of Minnesota     | 3                       | SW 1/4 of NW 1/4 |               |                         |                     |                              |                             |                           |   |                                |   |                           |                     |        |                             |  |                          |                             |                      |  |                       |
| U. S. of America       | 4                       | SE 1/4 of NW 1/4 |               |                         |                     |                              |                             |                           |   |                                |   |                           |                     |        |                             |  |                          |                             |                      |  |                       |
|                        | 5                       |                  |               |                         |                     |                              |                             |                           |   |                                |   |                           |                     |        |                             |  |                          |                             |                      |  |                       |
| Mary Jane See          | 6                       | NE 1/4 of NW 1/4 | 40            |                         |                     | no                           | yes                         | T                         |   |                                |   |                           |                     |        |                             |  |                          |                             |                      |  |                       |
| " " "                  | 7                       | GOVT LOT 1       | 39.58         |                         |                     | "                            | "                           | "                         |   |                                |   |                           |                     |        |                             |  |                          |                             |                      |  |                       |
| " " "                  | 8                       | GOVT LOT 2       | 39.50         |                         |                     | "                            | "                           | "                         |   |                                |   |                           |                     |        |                             |  |                          |                             |                      |  |                       |
| " " "                  | 9                       | SE 1/4 of NW 1/4 | 40            |                         |                     | "                            | "                           | "                         |   |                                |   |                           |                     |        |                             |  |                          |                             |                      |  |                       |
|                        | 10                      |                  |               |                         |                     |                              |                             |                           |   |                                |   |                           |                     |        |                             |  |                          |                             |                      |  |                       |
| Mary Jane See          | 11                      | NE 1/4 of SW 1/4 | 40            |                         |                     | no                           | yes                         | T                         |   |                                |   |                           |                     |        |                             |  |                          |                             |                      |  |                       |
| U. S. of America       | 12                      | GOVT LOT 3       |               |                         |                     |                              |                             |                           |   |                                |   |                           |                     |        |                             |  |                          |                             |                      |  |                       |
| U. S. of America       | 13                      | GOVT LOT 4       |               |                         |                     |                              |                             |                           |   |                                |   |                           |                     |        |                             |  |                          |                             |                      |  |                       |
| Edward Zarychta        | 14                      | SE 1/4 of SW 1/4 | 40            |                         |                     | no                           | yes                         | T                         |   |                                |   |                           |                     |        |                             |  |                          |                             |                      |  |                       |
|                        | 15                      |                  |               |                         |                     |                              |                             |                           |   |                                |   |                           |                     |        |                             |  |                          |                             |                      |  |                       |
| State of Minnesota     | 16                      | NE 1/4 of SE 1/4 |               |                         |                     |                              |                             |                           |   |                                |   |                           |                     |        |                             |  |                          |                             |                      |  |                       |
| U. S. of America       | 17                      | NW 1/4 of SE 1/4 |               |                         |                     |                              |                             |                           |   |                                |   |                           |                     |        |                             |  |                          |                             |                      |  |                       |
| U. S. of America       | 18                      | SW 1/4 of SE 1/4 |               |                         |                     |                              |                             |                           |   |                                |   |                           |                     |        |                             |  |                          |                             |                      |  |                       |
| U. S. of America       | 19                      | SE 1/4 of SE 1/4 |               |                         |                     |                              |                             |                           |   |                                |   |                           |                     |        |                             |  |                          |                             |                      |  |                       |
|                        | 20                      |                  |               |                         |                     |                              |                             |                           |   |                                |   |                           |                     |        |                             |  |                          |                             |                      |  |                       |

239 08

Cass County, Minnesota, for Taxes for the Year 1963.

| SOLD FOR TAXES | VALUATIONS BY SCHOOL DISTRICTS AS EQUALIZED BY DEPARTMENT OF TAXATION |              |              |              |              |              | Tax Including State Homestead | State Tax on Non-Homestead | SPECIAL TAXES | SPECIAL TAXES | TOTAL TAXES | PAID | WHEN PAID | Number of Receipt | March Settlement 1964 | June Settlement 1964 | Penalty Settlement 1964 | November Settlement 1964 | Penalty | Collections to First Monday in January 1965 | Penalty | Delinquent on First Monday in January 1965 | Total Delinquent Tax and Penalty | REMARKS |
|----------------|---|--------------|--------------|--------------|--------------|--------------|-------------------------------|----------------------------|---------------|---------------|-------------|------|-----------|-------------------|-----------------------|----------------------|-------------------------|--------------------------|---------|---|---------|--|----------------------------------|---------|
|                | District No.  | District No. | District No. | District No. | District No. | District No. |                               |                            |               |               |             |      |           |                   |                       |                      |                         |                          |         |   |         |  |                                  |         |
|                | Rate  | Rate         | Rate         | Rate         | Rate         | Rate         |                               |                            |               |               |             |      |           |                   |                       |                      |                         |                          |         |   |         |  |                                  |         |
| 1              |   |              |              |              |              |              |                               |                            |               |               |             |      |           |                   |                       |                      |                         |                          |         |   |         |  |                                  |         |
| 2              |   |              |              |              |              |              |                               |                            |               |               |             |      |           |                   |                       |                      |                         |                          |         |   |         |  |                                  |         |
| 3              |   |              |              |              |              |              |                               |                            |               |               |             |      |           |                   |                       |                      |                         |                          |         |   |         |  |                                  |         |
| 4              |   |              |              |              |              |              |                               |                            |               |               |             |      |           |                   |                       |                      |                         |                          |         |   |         |  |                                  |         |
| 5              |   |              |              |              |              |              |                               |                            |               |               |             |      |           |                   |                       |                      |                         |                          |         |   |         |  |                                  |         |
| 6              |   |              |              |              |              |              |                               |                            |               |               |             |      |           |                   |                       |                      |                         |                          |         |   |         |  |                                  |         |
| 7              |   |              |              |              |              |              |                               |                            |               |               |             |      |           |                   |                       |                      |                         |                          |         |   |         |  |                                  |         |
| 8              |   |              |              |              |              |              |                               |                            |               |               |             |      |           |                   |                       |                      |                         |                          |         |   |         |  |                                  |         |
| 9              |   |              |              |              |              |              |                               |                            |               |               |             |      |           |                   |                       |                      |                         |                          |         |   |         |  |                                  |         |
| 10             |   |              |              |              |              |              |                               |                            |               |               |             |      |           |                   |                       |                      |                         |                          |         |   |         |  |                                  |         |
| 11             |   |              |              |              |              |              |                               |                            |               |               |             |      |           |                   |                       |                      |                         |                          |         |   |         |  |                                  |         |
| 12             |   |              |              |              |              |              |                               |                            |               |               |             |      |           |                   |                       |                      |                         |                          |         |   |         |  |                                  |         |
| 13             |   |              |              |              |              |              |                               |                            |               |               |             |      |           |                   |                       |                      |                         |                          |         |   |         |  |                                  |         |
| 14             |   |              |              |              |              |              |                               |                            |               |               |             |      |           |                   |                       |                      |                         |                          |         |   |         |  |                                  |         |
| 15             |   |              |              |              |              |              |                               |                            |               |               |             |      |           |                   |                       |                      |                         |                          |         |   |         |  |                                  |         |
| 16             |   |              |              |              |              |              |                               |                            |               |               |             |      |           |                   |                       |                      |                         |                          |         |   |         |  |                                  |         |
| 17             |   |              |              |              |              |              |                               |                            |               |               |             |      |           |                   |                       |                      |                         |                          |         |   |         |  |                                  |         |
| 18             |   |              |              |              |              |              |                               |                            |               |               |             |      |           |                   |                       |                      |                         |                          |         |   |         |  |                                  |         |
| 19             |   |              |              |              |              |              |                               |                            |               |               |             |      |           |                   |                       |                      |                         |                          |         |   |         |  |                                  |         |
| 20             |   |              |              |              |              |              |                               |                            |               |               |             |      |           |                   |                       |                      |                         |                          |         |   |         |  |                                  |         |

HANISTER'S VERIFICATION

PERSONAL









Assessment Roll and Tax List of Real Property in the Town of Torrey, Cass County, Minnesota, for Taxes for the Year 1963.

Cass County, Minnesota, for Taxes for the Year 1963.

Form 300 MILLER-DAVIS CO., MINNEAPOLIS

Table with columns: IN WHOSE NAME ASSESSED, DESCRIPTION OF PROPERTY, TRUE AND FULL VALUATIONS, ASSESSED VALUATIONS, VALUATIONS BY SCHOOL DISTRICTS AS EQUALIZED BY DEPARTMENT OF TAXATION, TAX INCLUDING STATE HOMESTEAD, SPECIAL TAXES, PAID, WHEN PAID, Number of Receipt, March Settlement 1964, June Settlement 1964, November Settlement 1964, Collections to First Monday in January 1965, Delinquent on First Monday in January 1965, Total Delinquent Tax and Penalty, REMARKS.

Real Estate

13-2

HANSEN'S REPLICATION

2-23-01A











Assessment Roll and Tax List of Real Property in the Town of Joray, Cass County, Minnesota, for Taxes for the Year 1963.

Form SCD - MILLER-DAVIS CO., MINNEAPOLIS

\* Indicate Type of Property: R-Residential, C-Commercial, I-Industrial, U-Utility, F-Farm, L-Lakeshore, T-Timber, M-Mineral

Cass County, Minnesota, for Taxes for the Year 1963.

Table with columns: IN WHOSE NAME ASSESSED, DESCRIPTION OF PROPERTY, TRUE AND FULL VALUATIONS, ASSESSED VALUATIONS, and FINAL EQUALIZED VALUE. Includes rows for State of Minnesota and U.S. of America.

Table with columns: VALUATIONS BY SCHOOL DISTRICTS AS EQUALIZED BY DEPARTMENT OF TAXATION, TAX INCLUDING STATE, SPECIAL TAXES, TOTAL TAXES, PAID, WHEN PAID, and REMARKS. Includes rows for school districts 1 through 20.

Real Estate

DANNISTER'S VERIFICATION

Assessment Roll and Tax List of Real Property in the Town of Lorey

Form 500 - MILLER-DAVIS CO., MINNEAPOLIS

\* Indicate Type of Property: R-Residential, C-Commercial, I-Industrial, U-Utility, F-Farm, L-Lakeshore, T-Timber, M-Mineral

Table with columns: IN WHOSE NAME ASSESSED, DESCRIPTION OF PROPERTY, TRUE AND FULL VALUATIONS, ASSESSED VALUATIONS, and FINAL EQUALIZED VALUE. Includes entries for State of Minnesota and Norman V. Winter.

Cass County, Minnesota, for Taxes for the Year 1963.

Table with columns: VALUATIONS BY SCHOOL DISTRICTS AS EQUALIZED BY DEPARTMENT OF TAXATION, TAXES, PAID, WHEN PAID, and REMARKS. Includes handwritten tax amounts and dates.

Assessment Roll and Tax List of Real Property in the Town of Jorvey, Cass County, Minnesota, for Taxes for the Year 1963.

Form 5CD - MILLER-DAVIS CO., MINNEAPOLIS

\* Indicate Type of Property: R-Residential, C-Commercial, I-Industrial, U-Utility, F-Farm, L-Lakeshore, T-Timber, M-Mineral

Table with columns: IN WHOSE NAME ASSESSED, DESCRIPTION OF PROPERTY, TRUE AND FULL VALUATIONS, ASSESSED VALUATIONS, and FINAL EQUALIZED VALUE. Includes entries for U.S. of America, Frederick M. & Orpha C. Hass, and Henry & Daisy Templin.

Cass County, Minnesota, for Taxes for the Year 1963.

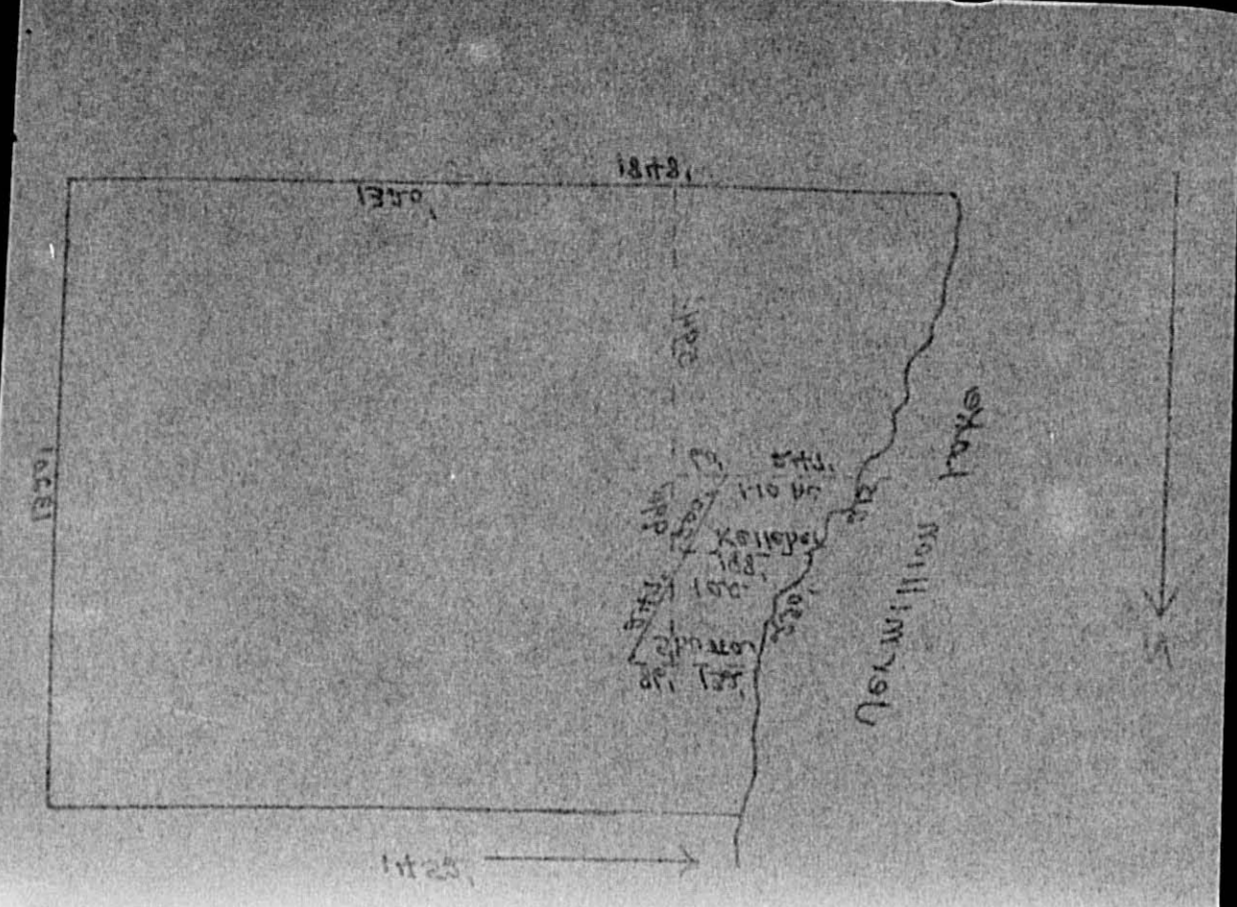
Table with columns: VALUATIONS BY SCHOOL DISTRICTS AS EQUALIZED BY DEPARTMENT OF TAXATION, Tax Including State Homestead, SPECIAL TAXES, TOTAL TAXES, PAID, WHEN PAID, Number of Receipt, March Settlement, June Settlement, November Settlement, Collections to First Monday in January 1965, Delinquent on First Monday in January 1965, Total Delinquent Tax and Penalty, REMARKS. Includes handwritten notes and calculations.



Assessment Roll and Tax List of Real Property in the Town of Jorey

Form 500 - MILLER-DAVIS CO., MINNEAPOLIS

Table with columns: IN WHOSE NAME ASSESSED, DESCRIPTION OF PROPERTY, TRUE AND FULL VALUATIONS, ASSESSED VALUATIONS, TOTAL ASSESSED VALUE, FINAL EQUALIZED VALUE.



Cass County, Minnesota, for Taxes for the Year 1963.

Table with columns: SOLD FOR TAXES, VALUATIONS BY SCHOOL DISTRICTS AS EQUALIZED BY DEPARTMENT OF TAXATION, TAX INCLUDING STATE HOMESTEAD, SPECIAL TAXES, TOTAL TAXES, PAID, WHEN PAID, Number of Receipt, March Settlement, June Settlement, November Settlement, Collections to First Monday in January, Delinquent on First Monday in January, Total Delinquent Tax and Penalty, REMARKS.

Assessment Roll and Tax List of Real Property in the Town of Lovrey

Form 500 - MILLER-DAVIS CO., MINNEAPOLIS

\* Indicate Type of Property: R-Residential, C-Commercial, I-Industrial, U-Utility, F-Farm, L-Lakeshore, T-Timber, M-Mineral

Cass County, Minnesota, for Taxes for the Year 1963.

Table with columns for 'IN WHOSE NAME ASSESSED', 'DESCRIPTION OF PROPERTY', 'TRUE AND FULL VALUATIONS', 'ASSESSED VALUATIONS', 'VALUATIONS BY SCHOOL DISTRICTS AS EQUALIZED BY DEPARTMENT OF TAXATION', and 'SOLD FOR TAXES'. Includes rows for State of Minnesota, U.S. of America, and Govt Lot 1-4.

Real Estate 143-25

MINISTER'S VERIFICATION



Assessment Roll and Tax List of Real Property in the Town of Lorey

Form 500 MILLER-DAVIS CO., MINNEAPOLIS

\* Indicate Type of Property: R-Residential, C-Commercial, I-Industrial, U-Utility, F-Farm, L-Lakeshore, T-Timber, M-Mineral

Cass County, Minnesota, for Taxes for the Year 1963.

Table with columns for IN WHOSE NAME ASSESSED, DESCRIPTION OF PROPERTY, TRUE AND FULL VALUATIONS, ASSESSED VALUATIONS, VALUATIONS BY SCHOOL DISTRICTS AS EQUALIZED BY DEPARTMENT OF TAXATION, and REMARKS. Includes handwritten entries for property owners like 'Ralph J. + Thelma L. Dugan' and tax amounts.



Assessment Roll and Tax List of Real Property in the Town of Jorey

Form 500 - MILLER-DAVIS CO., MINNEAPOLIS

\* Indicate Type of Property: R-Residential, C-Commercial, I-Industrial, U-Utility, F-Farm, L-Lakeshore, T-Timber, M-Mineral

Cass County, Minnesota, for Taxes for the Year 1963.

Table with columns: IN WHOSE NAME ASSESSED, DESCRIPTION OF PROPERTY, TRUE AND FULL VALUATIONS, ASSESSED VALUATIONS, VALUATIONS BY SCHOOL DISTRICTS AS EQUALIZED BY DEPARTMENT OF TAXATION, TAXES, PAID, WHEN PAID, Number of Receipt, March Settlement 1964, June Settlement 1964, Penalty, November Settlement 1964, Collections to First Monday in January 1965, Delinquent on First Monday in January 1965, Total Delinquent Tax and Penalty, REMARKS.

Real Estate

MINNISTON'S REPLICATION

2-23-01A



Assessment Roll and Tax List of Real Property in the Town of Jorey, Cass County, Minnesota, for Taxes for the Year 1963.

Form 500 - MILLER-DAVIS CO., MINNEAPOLIS

\* Indicate Type of Property: R-Residential, C-Commercial, I-Industrial, U-Utility, F-Farm, L-Lakeshore, T-Timber, M-Mineral

Cass County, Minnesota, for Taxes for the Year 1963.

Table with columns: IN WHOSE NAME ASSESSED, DESCRIPTION OF PROPERTY, TRUE AND FULL VALUATIONS, ASSESSED VALUATIONS, VALUATIONS BY SCHOOL DISTRICTS AS EQUALIZED BY DEPARTMENT OF TAXATION, SOLD FOR TAXES, PAID, WHEN PAID, Number of Receipt, March Settlement 1964, June Settlement 1964, November Settlement 1964, Collections to First Monday in January 1965, Delinquent on First Monday in January 1965, Total Delinquent Tax and Penalty, REMARKS.

Real Estate

148-2

HANISTER'S REPLICATION

2-23-2014

Assessment Roll and Tax List of Real Property in the Town of Jorvey

Form 5CD - MILLER-DAVIS CO., MINNEAPOLIS

\* Indicate Type of Property: R-Residential, C-Commercial, I-Industrial, U-Utility, F-Farm, L-Lakeshore, T-Timber, M-Mineral

Table with columns: IN WHOSE NAME ASSESSED, DESCRIPTION OF PROPERTY, TRUE AND FULL VALUATIONS, ASSESSED VALUATIONS (RURAL, ALL OTHER), TOTAL ASSESSED VALUE, FINAL EQUALIZED VALUE.

Cass County, Minnesota, for Taxes for the Year 1963.

Table with columns: SOLD FOR TAXES, VALUATIONS BY SCHOOL DISTRICTS AS EQUALIZED BY DEPARTMENT OF TAXATION, Tax including State Homestead, State Tax on Non-Homestead, SPECIAL TAXES, TOTAL TAXES, PAID, WHEN PAID, Number of Receipt, March Settlement 1964, June Settlement 1964, November Settlement 1964, Penalty, Collections to First Monday in January 1965, Delinquent on First Monday in January 1965, Total Delinquent Tax and Penalty, REMARKS.

Real Estate

143-25

BAUNISTER'S VERIFICATION

Personal



Assessment Roll and Tax List of Real Property in the Town of Loring

Form 5C MILLER-DAVIS CO., MINNEAPOLIS

\* Indicate Type of Property: R-Residential, C-Commercial, I-Industrial, U-Utility, F-Farm, L-Lakeshore, T-Timber, M-Mineral

Table with columns: IN WHOSE NAME ASSESSED, DESCRIPTION OF PROPERTY, TRUE AND FULL VALUATIONS, ASSESSED VALUATIONS (RURAL, ALL OTHER), and FINAL EQUALIZED VALUE.

Cass County, Minnesota, for Taxes for the Year 1963.

Table with columns: VALUATIONS BY SCHOOL DISTRICTS AS EQUALIZED BY DEPARTMENT OF TAXATION, Tax including State Homestead, State Tax on Non-Homestead, SPECIAL TAXES, TOTAL TAXES, PAID, WHEN PAID, Number of Receipt, March Settlement 1964, June Settlement 1964, November Settlement 1964, Collections to First Monday in January 1965, Delinquent on First Monday in January 1965, Total Delinquent Tax and Penalty, REMARKS.

Real Estate

13-23

BANNISTER'S VERMILION

Personal

Assessment Roll and Tax List of Real Property in the Town of Torrey

\* Indicate Type of Property: R-Residential, C-Commercial, I-Industrial, U-Utility, F-Farm, L-Lakeshore, T-Timber, M-Mineral

Cass County, Minnesota, for Taxes for the Year 1963.

Form 5C - MILLER-DAVIS CO., MINNEAPOLIS

Table with columns: IN WHOSE NAME ASSESSED, Bannister's Vermillion Lake Addn., DESCRIPTION OF PROPERTY, TRUE AND FULL VALUATIONS, ASSESSED VALUATIONS, and FINAL EQUALIZED VALUE.

Table with columns: VALUATIONS BY SCHOOL DISTRICTS AS EQUALIZED BY DEPARTMENT OF TAXATION, SOLD FOR TAXES, SPECIAL TAXES, TOTAL TAXES, PAID, WHEN PAID, Number of Receipt, March Settlement 1964, June Settlement 1964, November Settlement 1964, Collections to First Monday in January 1965, Delinquent on First Monday in January 1965, Total Delinquent Tax and Penalty, REMARKS.

18-2 Real Estate

Persons

Assessment Roll and Tax List of Real Property in the Town of Jorrey

\* Indicate Type of Property: R-Residential, C-Commercial, I-Industrial, U-Utility, F-Farm, L-Lakeshore, T-Timber, M-Mineral

Cass County, Minnesota, for Taxes for the Year 1963.

Form 50 MILLER-DAVIS CO., MINNEAPOLIS

Table with columns: IN WHOSE NAME ASSESSED, DESCRIPTION OF PROPERTY, TRUE AND FULL VALUATIONS, ASSESSED VALUATIONS, VALUATIONS BY SCHOOL DISTRICTS AS EQUALIZED BY DEPARTMENT OF TAXATION, SOLD FOR TAXES, PAID, WHEN PAID, Number of Receipt, March Settlement 1964, June Settlement 1964, Penalty, November Settlement 1964, Penalty, Collections to First Monday in January 1965, Penalty, Delinquent on First Monday in January 1965, Total Delinquent Tax and Penalty, REMARKS.

Real Estate, 18-2, ADD'N BANNISTER'S VERMILION

Personal



