

ASSESSMENT & TAX LIST - 1962

Torrey



SUMMARY OF TAX COLLECTION

Original Levy	- - - - -	\$ 6597.30
Additions	- - - - -	\$ _____
Abatements	- - - - -	\$ 21.06
		\$ 6576.24

COLLECTIONS

March Settlement	- - - - -	\$ 1073.20
June Settlement	- - - - -	\$ 3443.93
November Settlement	- - - - -	\$ 1427.95
January Settlement	- - - - -	\$ 49.52
		\$ 5998.60
Over Collected	- - - - -	\$ _____
Under Collected	- - - - -	\$ _____
Delinquent	- - - - -	\$ 586.64
Total	- - - - -	\$ 6576.24

Real Estate  
Barnstable's Vermillion  
Late Addition







COLLECTIONS OF TAXES OF 196...

Town OF Torrey

CASS COUNTY, MINNESOTA

FUNDS	MARCH SETTLEMENT 1963	JUNE SETTLEMENT 1963	NOV. SETTLEMENT 1963	Amount Collected from Nov. 1962 to First Monday in Jan. 1963	REDUCTIONS	Total Reductions and Collected	BALANCE UNCOLLECTED	ADDITIONS	Total Uncollected to First Monday in January, 1963
State-Non-Homestead	125 41	62 08	28 53	153					
State-Homestead	24 71	96 10	38 87	149					
County Revenue	118 69	380 98	149 96	575					
County Road and Bridge	74 02	237 59	93 52	388					
County Welfare	184 08	590 89	232 58	870					
County Bond and Interest	50 59	162 39	63 91	244					
Pera	19 58	63 84	24 74	95					
Co. Murree	3 37	10 81	4 26	15					
C. H. Bldg.	7 40	23 76	9 35	36					
Town Revenue	10 66	34 21	13 47	58					
Town Road and Bridge	32 83	105 37	41 48	157					
Town State Loan									
School Local 1 Mill	248 17	823 31	418 46	717					
School Special	57 42								
School State Loan	114 01	495 44	135 48	1238					
Deficiency	33 29	96 22	26 31	240					
Tuition C.O.	570	2200	1268						
Transportation Pera	829	3203	1846						
Bldg.	3104	11986	6910						
1956 B.T.D.	1717	6631	3823						
1960 B.T.D.	137	440	173	07					
agr. assn.	185	594	234	08					
transp.	355	1140	449	17					
	107320	344393	142795	4952					

	School District No.	LOCAL 1 MILL	SPECIAL	STATE LOAN	Defic.	C.O.	Bldg.	Pera	1956 B.T.D.	1960 B.T.D.	TOTALS
MARCH SETTLEMENT	un na un a 317		66 00 16 63 165 64	57 42	114 01	22 14 11 15	829	570	31 04	17 17	202 15 85 20 287 74
	Totals		248 17	57 42	114 01	33 29	829	570	31 04	17 17	515 09
JUNE SETTLEMENT	un na un a 317		81 64 102 58 439 01		141 63 35 44	27 39 68 83	32 03	22 00	119 86	66 31	250 06 525 82 879 29
	Totals		823 31		495 44	96 22	32 03	22 00	119 86	66 31	1655 17
NOVEMBER SETTLEMENT	un na un a 317		21 579 28 42 368 45		37 30 98 18	7 24 19 07	18 46	12 68	69 10	38 23	66 13 145 67 506 92
	Totals		418 46		135 48	26 31	18 46	12 68	69 10	38 23	718 72
NOVEMBER to JANUARY	un na		7 17		1238	240					2195
	Totals		7 17		1238	240					2195
ADDITIONS	School District No.										
	Totals										
REDUCTIONS	School District No.										
	Totals										

Real Estate

Bannister's Vermont Lion  
Late Addition



Assessment Roll and Tax List of Real Property in the Town of Dorey of Dorey County, Minnesota.  
 \* Indicate Type of Property: R-Residential, C-Commercial, I-Industrial, U-Utility, F-Farm, L-Lakeshore, T-Timber, M-Mineral

Form 5CD MILLER-DAVIS CO., MINNEAPOLIS

IN WHOSE NAME ASSESSED	DESCRIPTION OF PROPERTY				No. School District	Indicate Homestead Yes or No	Agricultural Use Yes or No	Indicate Type of Property	TRUE AND FULL VALUATIONS		ASSESSED VALUATIONS										FINAL EQUALIZED VALUE			
	SUBDIVISION	Sec. or Lot	Town or Block	Rng.					Number of Acres of Land Acres 100ths	LAND Excludes of Structures and Improvements	BUILDINGS and Other Structures	MACHINERY Permanently Attached to Real Estate	TOTAL True and Full Value	RURAL		ALL OTHER				MACHINERY Permanently Attached to Real Estate		Seasonal and Recreational Cabins	TOTAL ASSESSED VALUE	Total Assessed Value as Equalized by the Board of Review
														Homestead Up to \$4,000 20%	Over \$4,000 and Non-Homestead 33 1/4%	Timber Land Class 2e 20%	Homestead Up to \$4,000 25%	Over \$4,000 and Non-Homestead 40%	33 1/4%					
									Dollars	Dollars	Dollars	Dollars	Dollars	Dollars	Dollars	Dollars	Dollars	Dollars	Dollars	Dollars	Dollars	Dollars	Dollars	
	NW 1/4 NW 1/4				14325																			
	NW 1/4 NW 1/4																							
	SW 1/4 NW 1/4																							
	SE 1/4 NW 1/4																							
	NE 1/4 NW 1/4																							
	NW 1/4 NW 1/4																							
	SW 1/4 NW 1/4																							
	SE 1/4 NW 1/4																							
	NE 1/4 SE 1/4																							
	NW 1/4 SE 1/4																							
	SW 1/4 SE 1/4																							
	SE 1/4 SE 1/4																							

Cass County, Minnesota, for Taxes for the Year 1962.

SOLD FOR TAXES	VALUATIONS BY SCHOOL DISTRICTS AS EQUALIZED BY DEPARTMENT OF TAXATION						Tax Including State Homestead	State Tax on Non-Homestead	SPECIAL TAXES	SPECIAL TAXES	TOTAL TAXES	PAID	WHEN PAID	Number of Receipt	March Settlement 1961	June Settlement 1961	Penalty	November Settlement 1961	Penalty	Collections to First Monday in January 1962	Penalty	Delinquent on First Monday in January 1962	Total Delinquent Tax and Penalty	REMARKS
	District No.	District No.	District No.	District No.	District No.	District No.																		
	Rate	Rate	Rate	Rate	Rate	Rate																		

Barnister's Vermillion Lake Addition







































Assessment Roll and Tax List of Real Property in the Town of Torrey

Cass County, Minnesota, for Taxes for the Year 1962.

Form SCD MILLER-DAVIS CO., MINNEAPOLIS

\* Indicate Type of Property: R-Residential, C-Commercial, A-Industrial, U-Utility, F-Farm, L-Lakeshore, T-Timber, M-Mineral

Table with columns: IN WHOSE NAME ASSESSED, DESCRIPTION OF PROPERTY, TRUE AND FULL VALUATIONS, ASSESSED VALUATIONS, VALUATIONS BY SCHOOL DISTRICTS AS EQUALIZED BY DEPARTMENT OF TAXATION, TAXES, PAID, WHEN PAID, Number of Receipt, March Settlement 1963, June Settlement 1963, November Settlement 1963, Collections to First Monday in January 1964, Delinquent on First Monday in January 1964, Total Delinquent Tax and Penalty, REMARKS.







Assessment Roll and Tax List of Real Property in the Town of Down of Dorsey

Cass County, Minnesota, for Taxes for the Year 1962.

Form 500 MILLER-DAVIS CO., MINNEAPOLIS

Table with columns: IN WHOSE NAME ASSESSED, DESCRIPTION OF PROPERTY, TRUE AND FULL VALUATIONS, ASSESSED VALUATIONS, VALUATIONS BY SCHOOL DISTRICTS AS EQUALIZED BY DEPARTMENT OF TAXATION, SOLD FOR TAXES, SPECIAL TAXES, TOTAL TAXES, PAID, WHEN PAID, Number of Receipt, March Settlement 1963, June Settlement 1963, Penalty, November Settlement 1963, Collections to First Monday in January 1964, Delinquent on First Monday in January 1964, Total Delinquent Tax and Penalty, REMARKS.

Robert A. Strom
Thomas & Doris Strom
U. S. of America
William F. Dr. & Dorothy M. Hulbert
Lamb Gohlund
Tony & Rosemary A. Strom
Harry Hartman
U. S. of America
U. S. of America
William F. Dr. & Dorothy M. Hulbert
U. S. of America
U. S. of America
Hoy & ...

PAID WHEN PAID
1st HALF PAID OCT 30 1962
2nd HALF PAID MAY 3 1963
PAID IN FULL MAY 3 1963
PAID IN FULL OCT 3 1963
PAID IN FULL MAR 29 1963
PAID IN FULL MAR 29 1963
PAID IN FULL OCT 3 1963
PAID IN FULL APR 7 1963
PAID IN FULL APR 7 1963

REMARKS
21278
21929
11319
11363
11319
4
21977
11319
408







































Assessment Roll and Tax List of Real Property in the Town of Torrey, Cass County, Minnesota

Form 502 MILLER-DAVIS CO., MINNEAPOLIS

\* Indicate Type of Property: R-Residential, C-Commercial, I-Industrial, U-Utility, F-Farm, L-Lakeshore, T-Timber, M-Mineral

Cass County, Minnesota, for Taxes for the Year 1962.

Table with columns: IN WHOSE NAME ASSESSED, DESCRIPTION OF PROPERTY, TRUE AND FULL VALUATIONS, ASSESSED VALUATIONS, VALUATIONS BY SCHOOL DISTRICTS AS EQUALIZED BY DEPARTMENT OF TAXATION, TAX INCLUDING STATE HOMESTEAD, SPECIAL TAXES, TOTAL TAXES, PAID, WHEN PAID, Number of Receipt, March Settlement 1963, June Settlement 1963, Penalty, November Settlement 1963, Penalty, Collections to First Monday in January 1964, Penalty, Delinquent on First Monday in January 1964, Total Delinquent Tax and Penalty, REMARKS.























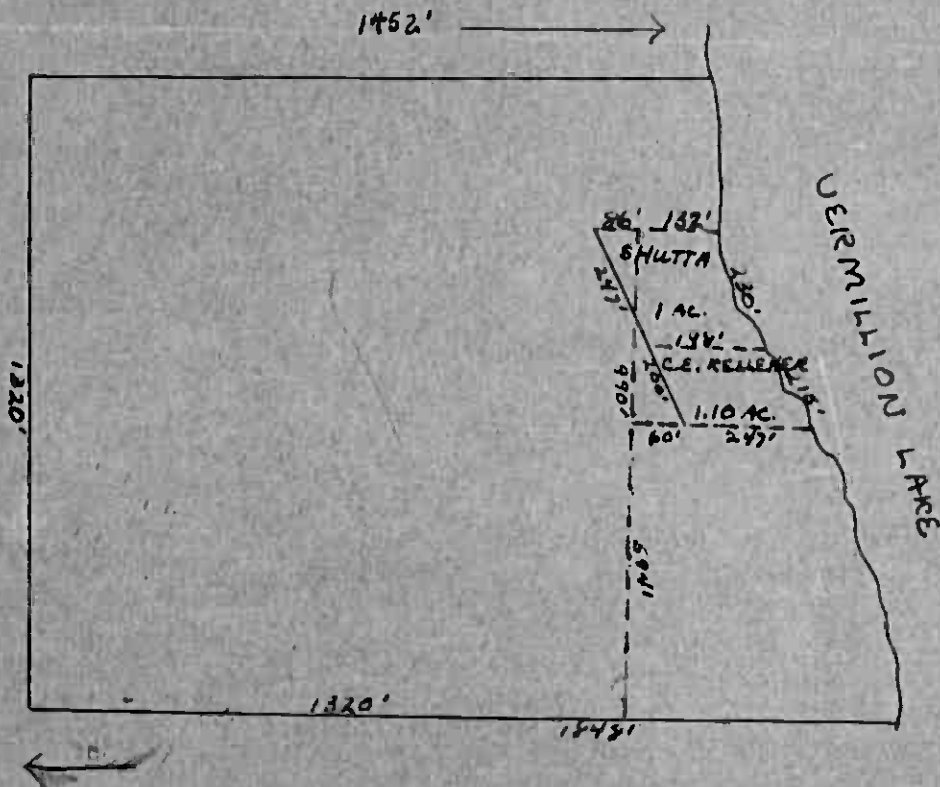








LOT 3 29-143-25





Assessment Roll and Tax List of Real Property in the Town of Dorsey

\* Indicate Type of Property: R-Residential, C-Commercial, I-Industrial, U-Utility, F-Farm, L-Lakeshore, T-Timber, M-Mineral

Cass County, Minnesota, for Taxes for the Year 1962.

Table with columns: IN WHOSE NAME ASSESSED, DESCRIPTION OF PROPERTY, TRUE AND FULL VALUATIONS, ASSESSED VALUATIONS, VALUATIONS BY SCHOOL DISTRICTS AS EQUALIZED BY DEPARTMENT OF TAXATION, SOLD FOR TAXES, PAID, WHEN PAID, Number of Receipt, March Settlement 1963, June Settlement 1963, November Settlement 1963, Penalty, Collections to First Monday in January 1964, Delinquent on First Monday in January 1964, Total Delinquent Tax and Penalty, REMARKS.

Real Estate

of 1/8 Vermillion



















Assessment Roll and Tax List of Real Property in the Town of Dorsey, Cass County, Minnesota

Form 300-MILLER-DAVIS CO., MINNEAPOLIS

Cass County, Minnesota, for Taxes for the Year 1962.

Table with columns: IN WHOSE NAME ASSESSED, DESCRIPTION OF PROPERTY, TRUE AND FULL VALUATIONS, ASSESSED VALUATIONS, VALUATIONS BY SCHOOL DISTRICTS AS EQUALIZED BY DEPARTMENT OF TAXATION, TAXES, PAID, WHEN PAID, Number of Receipt, March Settlement 1963, June Settlement 1963, Penalty, November Settlement 1961, Penalty, Collections to First Monday in January 1964, Penalty, Delinquent on First Monday in January 1964, Total Delinquent Tax and Penalty, REMARKS.

Real Estate

Real Estate



























