

Assessment & Tax List - 1961  
Thunder Lake















Assessment of T

Form 334 MILLER-DAY COMPANY, MINNEAPOLIS

COLLECTIONS OF TAXES OF 1961

Town OF Thunder Lake, CASS COUNTY, MINNESOTA

FUNDS	MARCH SETTLEMENT 1962	JUNE SETTLEMENT 1962	NOV. SETTLEMENT 1962	Amount Collected from Nov. 15, 1961 to First Monday in Jan. 1962	REDUCTIONS	Total Reductions and Collected	BALANCE UNCOLLECTED	ADDITIONS	Total Uncollected to First Monday in January, 1962
State-Non-Homestead,	32 18	242 44	105 70	595					
State-Homestead,	25 18	227 54	101 42	865					
County Revenue,	287 09	1329 31	587 16	2983					
County Road and Bridge,	155 77	721 28	318 59	1619					
County Welfare,	446 29	2066 46	912 76	4637					
County Bond and Interest,	8 49	39 31	17 37	88					
C. H. Bldg.	15 58	72 13	31 86	162					
Agri. Ass'n	3 89	18 03	7 96	40					
C. W. Def.	5 14	23 80	10 51	53					
Town Revenue,	40 19	186 09	82 20	418					
Town Road and Bridge,	103 28	478 21	211 23	1073					
Town State Loan,									
School Local 1 Mill,	346 58	1206 72	570 63	2023					
School Special,									
School State Loan,									
Deficiency	346 59	1604 84	708 86	3602					
Tuition C. O.	38 79	179 60	79 34	403					
Transportation									
PERA	56 24	260 38	115 01	584					
B. + J.	40 26	186 45	82 35	418					
Wel. Def.	84 82	392 74	173 47	882					
PERA	44 15	204 48	90 32	459					
	2080 51	9439 81	4206 74	20907					

	School District No.	LOCAL 1 MILL	SPECIAL	STATE LOAN	Deficiency	C. O.	PERA	B. + J.	TOTALS
MARCH SETTLEMENT	118a		4286		7628	854	1238	886	14892
	1187a		30372		27031	3025	4386	3140	67954
	Totals		34658		34659	3879	5624	4026	82846
JUNE SETTLEMENT	118a		59648		106173	11882	17226	12335	207264
	1187a		61024		54311	6078	8812	6310	136535
	Totals		120672		160484	17960	26038	18645	343799
NOVEMBER SETTLEMENT	1187a		34479		30686	3435	4978	3565	77143
	118a		22584		40200	4499	6523	4670	78476
	Totals		57063		70886	7934	11501	8235	155619
NOVEMBER to JANUARY	118a		2023		3602	403	584	418	7030
	Totals		2023		3602	403	584	418	7030
	School District No.								
ADDITIONS	Totals								
	School District No.								
REDUCTIONS	Totals								
	School District No.								

Color Mail  
 Index Pass  
 Oak Park  
 Oak Lawn  
 Del Ray Point  
 Plat of P.







Assessment Roll and Tax List of Real Property in the Town of Thunder Lake

Cass County, Minnesota, for Taxes for the Year 1961.

Table with columns for Description of Property, True and Full Valuations, Assessed Valuations, Valuations by School Districts, and Tax/Paid information. Includes entries for State of Minnesota, James P. & Oscar E. Pulkrabek, Raymond Brandes, etc.

(CONT ON NEXT PAGE)

12062































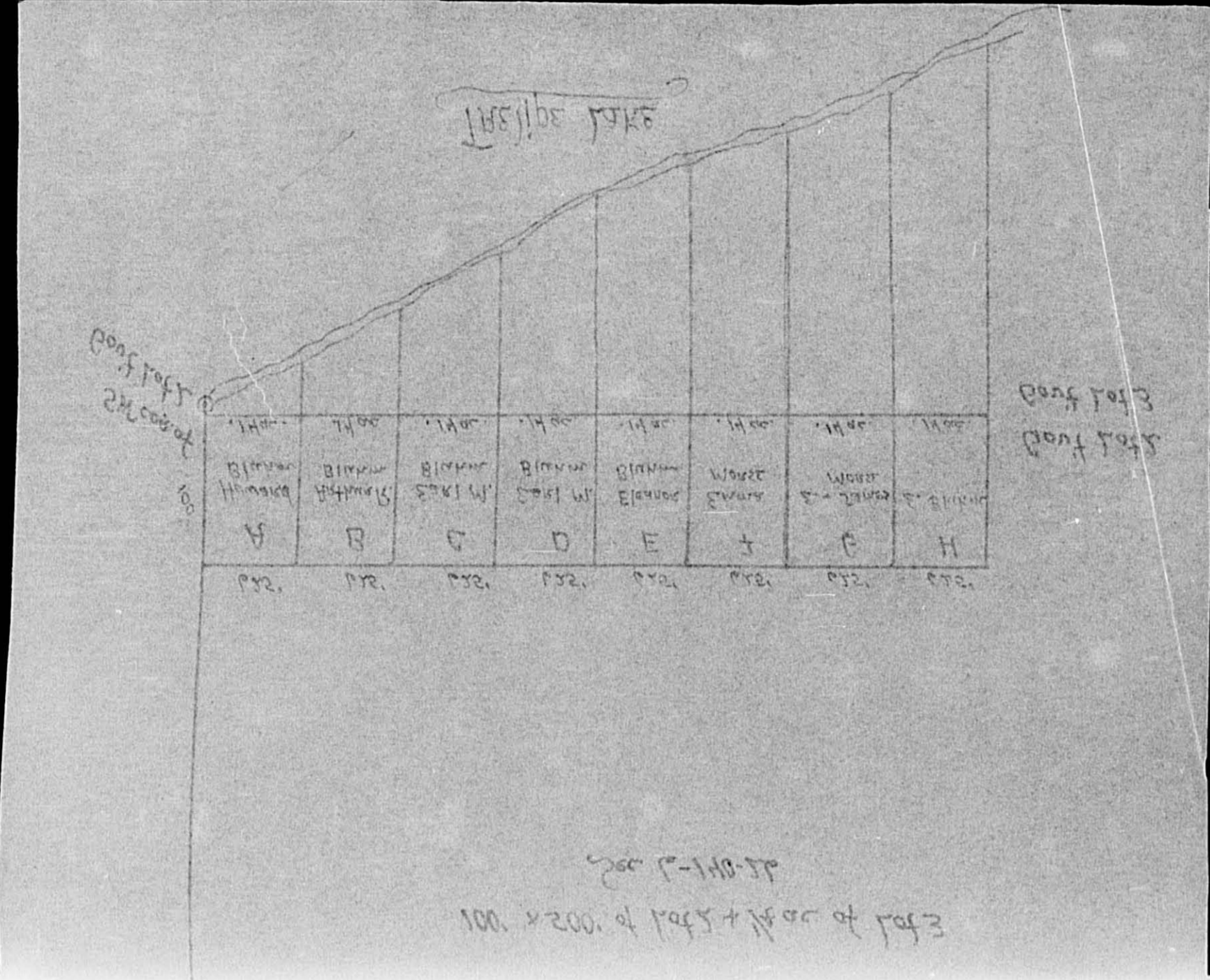
Assessment Roll and Tax List of Real Property in the Town of Thunder Lake

\* Indicate Type of Property: R-Residential, C-Commercial, I-Industrial, U-Utility, F-Farm, L-Lakeshore, T-Timber, M-Mineral

Form SCD - MILLER-DAVIS CO., MINNEAPOLIS

Table with columns: IN WHOSE NAME ASSESSED, DESCRIPTION OF PROPERTY, TRUE AND FULL VALUATIONS, ASSESSED VALUATIONS, and FINAL EQUALIZED VALUE. Includes handwritten entries for property owners like Eleanor S. Blukm and Emma A. + James V. Morse.

70 10



Cass County, Minnesota, for Taxes for the Year 1961.

Table with columns: VALUATIONS BY SCHOOL DISTRICTS AS EQUALIZED BY DEPARTMENT OF TAXATION, TAXES, PAID, WHEN PAID, and REMARKS. Includes handwritten entries for tax amounts and payment dates.

92 2266 80 2346

Cooley Trail, Oak Park, Del Ray Point, Beach, Peaches, Birchwood, Del Ray Point, Plat of P. J. G.



















































Assessment Roll and Tax List of Real Property in the Town of Thunder Lake

\* Indicate Type of Property: R-Residential, C-Commercial, I-Industrial, U-Utility, F-Farm, L-Lakeshore, T-Timber, M-Mineral

Form 500 - MILLER-DAVIS CO., MINNEAPOLIS

Table with columns: IN WHOSE NAME ASSESSED, DESCRIPTION OF PROPERTY, TRUE AND FULL VALUATIONS (RURAL, ALL OTHER, MACHINERY, Seasonal and Recreational Cabins), ASSESSED VALUATIONS, FINAL EQUALIZED VALUE.

Cass County, Minnesota, for Taxes for the Year 1961.

Table with columns: SOLD FOR TAXES, VALUATIONS BY SCHOOL DISTRICTS AS EQUALIZED BY DEPARTMENT OF TAXATION, Tax including State Homestead, State Tax on Non-Homestead, SPECIAL TAXES, TOTAL TAXES, PAID, WHEN PAID, Number of Receipt, March Settlement 1962, June Settlement 1962, Penalty, November Settlement 1962, Collections to First Monday in January 1963, Delinquent on First Monday in January 1963, Total Delinquent Tax and Penalty, REMARKS.

Color Trail of Park Beaches, Oak Park, 1st Oak Lawn, Birchwood, Del Rey Point, Flat of P. F. G.



















































Assessment Roll and Tax List of Real Property in the Town of Thunder Lake

\* Indicate Type of Property: R-Residential, C-Commercial, I-Industrial, U-Utility, F-Farm, L-Lakeshore, T-Timber, M-Mineral

Cass County, Minnesota, for Taxes for the Year 1961.

Table with columns: IN WHOSE NAME ASSESSED, DESCRIPTION OF PROPERTY, TRUE AND FULL VALUATIONS, ASSESSED VALUATIONS, VALUATIONS BY SCHOOL DISTRICTS AS EQUALIZED BY DEPARTMENT OF TAXATION, TAX INCLUDING STATE HOMESTEAD, SPECIAL TAXES, TOTAL TAXES, PAID, WHEN PAID, Number of Receipt, March Settlement 1962, June Settlement 1962, November Settlement 1962, Collections to First Monday in January 1963, Delinquent on First Monday in January 1963, Total Delinquent Tax and Penalty, REMARKS.

(CONT ON NEXT PAGE)

Cooley Trail of Oak Park Beaches, Oak Park, Oak Lawn Beach, Birchwood, Del Ray Point, Plat of P. F. 6



































































Assessment Roll and Tax List of Real Property in the Town of Thunder Lake,  
\* Indicate Type of Property: R-Residential, C-Commercial, I-Industrial, U-Utility, F-Farm, L-Lakeshore, T-Timber, M-Mineral

Form 50 - MILLER-DAVIS CO., MINNEAPOLIS

IN WHOSE NAME ASSESSED	DESCRIPTION OF PROPERTY				No. School District	Indicate Homestead Yes or No	Agri. or Seas. Rec. Yes or No	* Indicate Type of Property	TRUE AND FULL VALUATIONS				ASSESSED VALUATIONS							FINAL EQUALIZED VALUE	
	SUBDIVISION	Sec. or Lot	Town or Block	Number of Acres of Land					LAND Exclusive of Structures and Improvements	BUILDINGS and Other Structures	MACHINERY Permanently Attached to Real Estate	TOTAL True and Full Value	RURAL			ALL OTHER			TOTAL ASSESSED VALUE		Total Assessed Value as Equalized by the Board of Review
													Homestead Up to \$4,000 20%	Over \$4,000 and Non-Homestead 33 1/3%	Timber Land Class 3e 20%	Homestead Up to \$4,000 25%	Over \$4,000 and Non-Homestead 40%	MACHINERY Permanently Attached to Real Estate 33 1/3%			
	Govt Lot 1 - Sec. 7-140-26			Acres 100ths					Dollars	Dollars	Dollars	Dollars	Dollars	Dollars	Dollars	Dollars	Dollars				
John Kohanek		1			118	Yes	No	L													
"		2				Yes	"	"													
"		3				Yes	"	"													
"		4				Yes	"	R													
Evelyn Leckley		5				Yes	"	L													
"		6				Yes	No	L													
Helen F. O'Malley & Roy Ostlund		7				Yes	"	"													
"		8				Yes	"	"													
Michael & Hilban Hetey		9				No	Yes	L													
"		10				No	"	"													
Michael Hetey		11				No	Yes	L													
"		12				No	"	"													
Marjory M. + G. J. Ostrander, Jr.		13				No	"	"													
"		14				No	"	"													
Chlin + Rose Damon		15				No	"	"													
"		16				No	Yes	L													
Clara P. Romain		17				No	"	"													
"		18				No	No	"													
		19																			
		20																			

Cass County, Minnesota, for Taxes for the Year 1961.

SOLD FOR TAXES	VALUATIONS BY SCHOOL DISTRICTS AS EQUALIZED BY DEPARTMENT OF TAXATION						Tax Including State Homestead	State Tax on Non-Homestead	SPECIAL TAXES	SPECIAL TAXES	TOTAL TAXES	PAID	WHEN PAID	Number of Receipt	March Settlement 1962	June Settlement 1962	Penalty	November Settlement 1962	Penalty	Collections to First Monday in January 1963	Penalty	Delinquent on First Monday in January 1963	Total Delinquent Tax and Penalty	REMARKS	
	District No.	District No.	District No.	District No.	District No.	District No.																			
	Rate	Rate	Rate	Rate	Rate	Rate																			
	Dollars	Dollars	Dollars	Dollars	Dollars	Dollars	\$ cts.	\$ cts.	\$ cts.	\$ cts.	\$ cts.	Month Day Year			\$ cts.	\$ cts.	\$ cts.	\$ cts.	\$ cts.	\$ cts.	\$ cts.	\$ cts.	\$ cts.		
1							162			162	1 PAID IN FULL	MAY 9 1962											12096		
2							162			162	2 PAID IN FULL	MAY 9 1962												"	
3							162			162	3 PAID IN FULL	MAY 9 1962	8643		3312									"	
4							2826			2826	4 PAID IN FULL	MAY 9 1962												"	
5							162			162	5 PAID IN FULL	MAY 9 1962												12095	
6							162			162	6 PAID IN FULL	MAY 9 1962	8641		324									"	
7							2118			2118	7 PAID IN FULL	MAY 9 1962			2118									12094	
8							162			162	8 PAID IN FULL	MAY 9 1962	8638		162									"	
9	10						246	08		254	9 PAID IN FULL	OCT 1 1962												18179	
10	10						246	08		254	10 PAID IN FULL	OCT 1 1962	17704				3735	131						"	
11	11						2738	102		2840	11 PAID IN FULL	OCT 1 1962												"	
12	15						370	14		384	12 PAID IN FULL	OCT 1 1962												"	
13	35						864	32		896	13													894	
14	15						370	14		384	14													384	
15	99						2442	90		2532	15	1st Half Paid MAY 31 1962												22805	
16	15						370	14		384	16	2nd Half Paid OCT 2 1962	14453		1458									12030	
17	15						370	14		384	17	2nd Half Paid OCT 31 1962	14891											12030	
18	15						408	14		422	18	PAID IN FULL	MAY 2 4 1962	12284		384								12059	
19											19														
20											20														
	326						6324	310		14650															
							8016																		
							233			558															

Cooley Trail  
Duck Pass  
Oak Park Beaches  
Oak Lawn Beach

1st Add'l  
Birchwood Terrace  
Ray Stagers  
Trell  
Sand  
Birchwood  
Del Ray Point  
Pat of P. I. 6















Assessment Roll and Tax List of Real Property in the Town of Thunder Lake, Cass County, Minnesota, for Taxes for the Year 1961.

Form 50 MILLER-DAVIS CO., MINNEAPOLIS

\* Indicate Type of Property: R-Residential, C-Commercial, I-Industrial, U-Utility, F-Farm, L-Lakeshore, T-Timber, M-Mineral

Cass County, Minnesota, for Taxes for the Year 1961.

Cooley Trail Duck Pass, Oak Park Beaches, Oak Lawn Beach, Birchwood Terrace

Table with columns: IN WHOSE NAME ASSESSED, SUBDIVISION, Sec. or Lot, Town or Block, Rng., Number of Acres of Land, No. School District, Indicate Homestead, Agri or Sens Recr, Indicate Type of Property, TRUE AND FULL VALUATIONS (LAND, BUILDINGS, MACHINERY, TOTAL), ASSESSED VALUATIONS (RURAL, ALL OTHER, MACHINERY, Seasonal and Recreational Cabins, TOTAL ASSESSED VALUE, Total Assessed Value as Equalized by the Board of Review), FINAL EQUALIZED VALUE.

Frank X. Henke, " " " "

Table with columns: SOLD FOR TAXES, VALUATIONS BY SCHOOL DISTRICTS AS EQUALIZED BY DEPARTMENT OF TAXATION (District No., Rate, Mills), Tax Including State Homestead, State Tax on Non-Homestead, SPECIAL TAXES, TOTAL TAXES, PAID, WHEN PAID, Number of Receipt, March Settlement, June Settlement, Penalty, November Settlement, Penalty, Collections to First Monday in January 1963, Delinquent on First Monday in January 1963, Total Delinquent Tax and Penalty, REMARKS.

1 15 408 14 422 PAID IN FULL MAY 2 4 1961 12040
2 15 408 14 422 PAID IN FULL MAY 2 4 1961 12281
3 15 408 14 422 PAID IN FULL MAY 2 4 1961

45 1224 42 1266 1266

1st. Addn. Birchwood Terrace, Ray Stovers, Ray Stovers, Sand Beach, Plat of P. F. G.







































