

Assessment & Tax list - 1959  
Thunder Lake





Assessment of

Form 314 MILLER-DAY COMPANY, MINNEAPOLIS

NAME OF OWNER

TABULAR SCHEDULE OF VALUATIONS,

LEVIED IN THE Town OF Thunder Lake

School District No.	VALUATION BY SCHOOL DISTRICTS				RATE OF STATE TAXES										RATE OF COUNTY TAXES										RATE OF TOWN TAXES										RATE OF									
	Agri-cultural Lands	Non-Agri-cultural Lands	Personal Property	Total Value of all Property except Money and Credits	Total Rate of State Tax	Rev.	R. & B.	Welfare	Bonds and Int.	A+B	PERA	Total Rate of County Tax	Rev.	R. & B.	Drag Tax	State Loan	Total Rate of Town Tax	Local	Spe-cial	State Loan	Defi-ciency	Tui-tion	Trans-portion	Total Rate of State Tax	Local	Spe-cial	State Loan	Defi-ciency	Tui-tion	Trans-portion	Total Rate of State Tax	Local	Spe-cial	State Loan	Defi-ciency	Tui-tion	Trans-portion							
118	23,915	24,460	6717	56,245	11.8	8.10	35.68	15.61	95	5.5	5.79	129.04	6.23	17.8	1.8	25.83	25.83	25.83	34.67	34.67	11.7	6.1	3.7	11.7	6.1	3.7	11.7	6.1	3.7	11.7	6.1	3.7	11.7	6.1	3.7	11.7	6.1	3.7						
				N.H. 6.22		Co. Nurse		2.		A+B		2.		P.P. excluding State Rate																														
				14.32		A+B Bldg.		2.		A+B Bldg.		2.																																
				1.12		Agric. Assn.		.5		Agric. Assn.		.5																																
				1.12		Transp.		1.12		Transp.		1.12																																
Assessed Value				Rural		All Other		Personal Property		Total																																		
Homestead				10,687						10,687																																		
Non-Homestead				37,688				7870		45,558																																		
Total				48,375				7870		56,245																																		
				C.2 4169		Other 3701																																						

RATES AND TAXES

COUNTY OF CASS, STATE OF MINNESOTA

SCHOOL TAXES			LOCAL 1 MILL AND SPECIAL SCHOOL TAXES BY DISTRICTS										ALL OTHER TAXES		
Total Rate of Sch'l Tax	Total Rate of all Taxes		Local 1 Mill	Special	State Loan	Def.	C.O.	PERA	B+D.	Total School Taxes	FUNDS	Rate	Amounts		
81.17	244.14			614.65		852.40	287.66	149.97	90.97	1995.65	State - Non-Homestead,		2576.6		
106.17	269.14			1582.95		1097.62	370.41	193.12	117.14	3361.24	State - Homestead,		4217.6		
A	236.04			2197.60		19500.2	658.07	343.09	208.11	5356.89	County Revenue,		2007.00		
NA	261.04										County Road and Bridge,		843.72		
											County Welfare,		3484.52		
											Bonds and Interest				
											Co. Nurse		112.50		
											A+B Bldg.		112.50		
											Town Revenue,		350.41		
											Town Road and Bridge,		1001.86		
											Town Drag,				
											Town State Loan.				
											Nil		101.24		
													1452.81		
											School Local 1 Mill,				
											School Special,		2197.60		
											School State Loan,				
											Deficiency		1950.02		
											Tuition				
											Transportation				
											C.O.		658.07		
											PERA		343.09		
											B+D.		208.11		
													5356.89		
													14747.62		

County: A+B Med Prop. 281.42  
 PERA 325.70  
 Agric. Assn. 28.14  
 Transp. 63.00  
 725.85

Total Taxes Real Estate 12,657.02  
 Pers Prop. 2090.60  
 Total 14,747.62

Total Number of Acres 68.15  
 State of Minnesota, }  
 COUNTY OF CASS } ss.  
 I, L. C. Peterson, Auditor of said County and State aforesaid, do hereby certify that the foregoing is a true and correct Schedule, showing the valuation of all the taxable property, in the Town of Thunder Lake, in said County, the several rates of Taxation and Totals of the several Tax Funds levied thereon for the year A. D. 1959.  
 Witness my hand and official seal, this 5th day of January, A. D. 1960.  
L. C. Peterson County Auditor  
By Helen Billow, Deputy

SEAL

COLLECTIONS OF TAXES OF 1959 OF *2000* *Thousand Lake* CASS COUNTY, MINNESOTA

NAME OF OWNER	FUNDS	MARCH SETTLEMENT	JUNE SETTLEMENT	NOV. SETTLEMENT	Amount Collected from Nov. 19, 1958 to First Monday in Jan. 1959	REDUCTIONS	Total Reductions and Collected	BALANCE UNCOLLECTED	ADDITIONS	Total Uncollected to First Monday in January, 1959
		19.6.0	19.6.0	19.6.0						
	State-Non-Homestead,	20.45	140.66	100.66	225					
	State-Homestead,	28.03	241.71	58.68	383					
	County Revenue,	243.68	1083.22	448.57	1688					
	County Road and Bridge,	102.45	455.39	188.58	710					
	County Welfare,	423.12	1880.76	778.83	2932					
	County Bond and Interest,									
	R. & B. Fed. Proj.	34.15	151.80	62.86	236					
	PERA	39.55	175.78	72.79	274					
	R. & B. Bldg.	13.66	60.72	25.14	95					
	Town Revenue,	42.55	189.14	78.32	295					
	Town Road and Bridge,	121.58	540.40	223.78	842					
	Town Drag,									
	Town State Loan,									
	<i>Fire</i>	12.29	54.65	22.63	85					
	School Local 1 Mill,									
	School Special,	316.80	1185.17	487.56	2271					
	School State Loan,									
	Deficiency	236.79	1052.57	435.87	1640					
	Tuition									
	Transportation									
	C.O.	79.90	355.20	147.09	553					
	PERA	41.67	185.19	76.69	289					
	B. & S.	25.28	112.32	46.51	176					
	<i>Co. Nurse</i>	13.66	60.72	25.14	95					
	<i>Agri. Assn</i>	34.3	151.7	62.9	24					
	<i>Trans.</i>	7.64	34.00	14.08	54					
		1806.68	7974.57	3300.07	128.67					

MARCH SETTLEMENT	JUNE SETTLEMENT	NOVEMBER SETTLEMENT	NOVEMBER to JANUARY	ADDITIONS	REDUCTIONS	TOTALS	LOCAL 1 MILL	SPECIAL	STATE LOAN	Deficiency	C.O.	PERA	B. & S.
School District No. 118a 1187a						8022 62022		2471 29209		3426 20253	1156 6834	603 3564	366 2162
Totals						70044		31680		23679	7990	4167	2528
School District No. 118a 1187a						108055 180990		33281 85236		46154 59103	15575 19945	8120 10399	4925 6307
Totals						289045		118517		105257	35520	18519	11232
School District No. 118a 1187a						45792 73580		14104 34652		19559 24028	6600 8109	3442 4227	2087 2564
Totals						119372		48756		43587	14709	7669	4651
School District No. 118a 1187a						309 4620		95 2176		132 1508	44 509	24 265	14 162
Totals						4929		2271		1640	553	289	176
School District No.													
Totals													
School District No.													
Totals													

Real Estate

Cooley Hall Duck Passage Park  
Fair Lawn Beach  
Birdwood Terrace  
Ray Point  
Plat 01





Assessment Roll and Tax List of Real Property in the Town of Down of Shuanda Lake, Minnesota

Cass County, Minnesota, for Taxes for the Year 1959.

Form SCD 5-11-54 (REV. 5-1-54), MINNAPOLIS. \*Indicate Type of Property: R-Residential, C-Commercial, I-Industrial, U-Utility, F-Farm, L-Lakeshore, T-Timber, M-Mineral

Real Estate

Table with columns: IN WHOSE NAME ASSESSED, TO WHOM TRANSFERRED, DESCRIPTION OF PROPERTY, TRUE AND FULL VALUATIONS, ASSESSED VALUATIONS, VALUATIONS BY SCHOOL DISTRICTS AS EQUALIZED BY DEPARTMENT OF TAXATION, SOLD FOR TAXES, PAID, WHEN PAID, and REMARKS. Includes handwritten entries for Kenneth & Lowell Anderson and Robert J. Harris Jr.

Cooley Trail, Duck Pass, Park Park, Park Terrace, Birchwood Terrace, Ray Point, 1st part of P





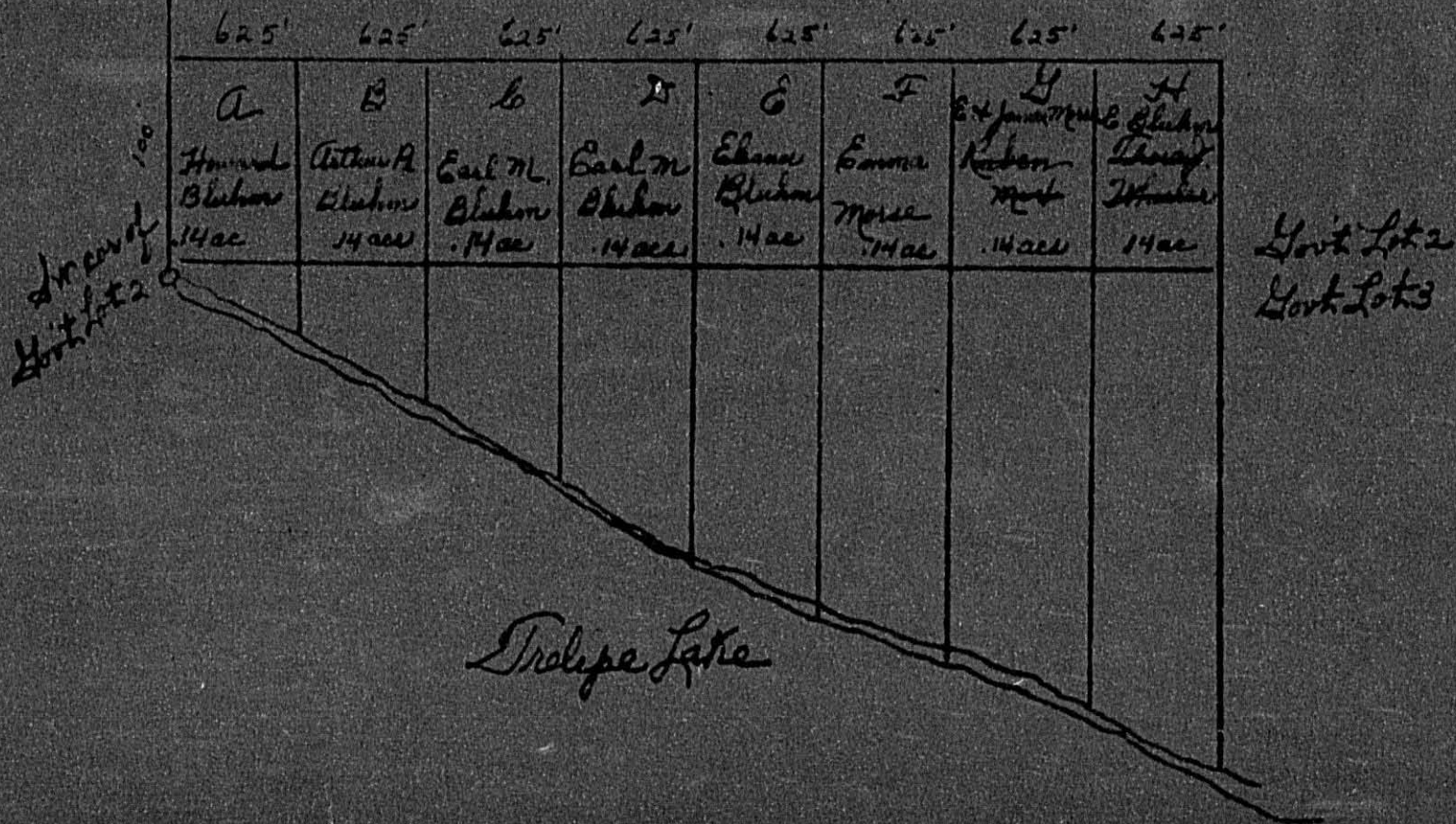








100' x 500' of Lot 2 + 1/4 ac of Lot 3  
 Dec 6-14-26





Assessment Roll and Tax List of Real Property in the Town of Thunder Lake

Indicate Type of Property: R-Residential, C-Commercial, I-Industrial, U-Utility, F-Farm, L-Lakeshore, T-Timber, M-Mineral

Form 5CD MILLER-DAVIS CO., MINNEAPOLIS

Real Estate

Table with columns: IN WHOSE NAME ASSESSED, TO WHOM TRANSFERRED, DESCRIPTION OF PROPERTY, TRUE AND FULL VALUATIONS, ASSESSED VALUATIONS, FINAL EQUALIZED VALUE. Includes handwritten entries for John E. Lange, Donald & Elsie Heman, State of Minnesota, Frank X. Henke, Louis C. & Anna C. Henke, Iver & Mildred Carlson, etc.

Cass County, Minnesota, for Taxes for the Year 1959.

Table with columns: SOLD FOR TAXES, VALUATIONS BY SCHOOL DISTRICTS AS EQUALIZED BY DEPARTMENT OF TAXATION, SPECIAL TAXES, TOTAL TAXES, PAID, WHEN PAID, Number of Receipt, March Settlement 1960, June Settlement 1960, November Settlement 1960, Collections to First Monday in January 1961, Delinquent on First Monday in January 1961, Total Delinquent Tax and Penalty, REMARKS. Includes handwritten tax amounts and payment dates.

Duck Passage Beach, Oak Lawn Beach, Birchwood Terrace, Ray Point, 1st Plat of P.F. 6



Road E  
1948

South Lot 4  
Dec 9-10-26

280'

26

25

24

23

22

21

20

19

18

17

16

15

14

13

12

11

10

9

8

7

6

5

4

3

2

Hogarth

267.3'

Washburn

267.3'

Lisa A. Henke

267.3'

Lisa A. Henke

267.3'

Frank X Henke

Thunder Ave

Block 1

267.3'

Assessment Roll and Tax List of Real Property in the Town of Thunder Lake

Cass County, Minnesota, for Taxes for the Year 1959.

Table with columns: IN WHOSE NAME ASSESSED, TO WHOM TRANSFERRED, DESCRIPTION OF PROPERTY, TRUE AND FULL VALUATIONS, ASSESSED VALUATIONS, VALUATIONS BY SCHOOL DISTRICTS AS EQUALIZED BY DEPARTMENT OF TAXATION, SOLD FOR TAXES, PAID, WHEN PAID, etc.

Assessment Roll and Tax List of Real Property in the Town of Thunder Lake

Cass County, Minnesota, for Taxes for the Year 1959.

Table with columns: IN WHOSE NAME ASSESSED, TO WHOM TRANSFERRED, DESCRIPTION OF PROPERTY, TRUE AND FULL VALUATIONS, ASSESSED VALUATIONS, FINAL EQUALIZED VALUE.

Table with columns: VALUATIONS BY SCHOOL DISTRICTS AS EQUALIZED BY DEPARTMENT OF TAXATION, TAXES, PAID, WHEN PAID, SPECIAL TAXES, TOTAL TAXES, PAID, WHEN PAID, March Settlement 1960, June Settlement 1960, November Settlement 1960, Collections to First Monday in January 1961, Delinquent on First Monday in January 1961, Total Delinquent Tax and Penalty, REMARKS.

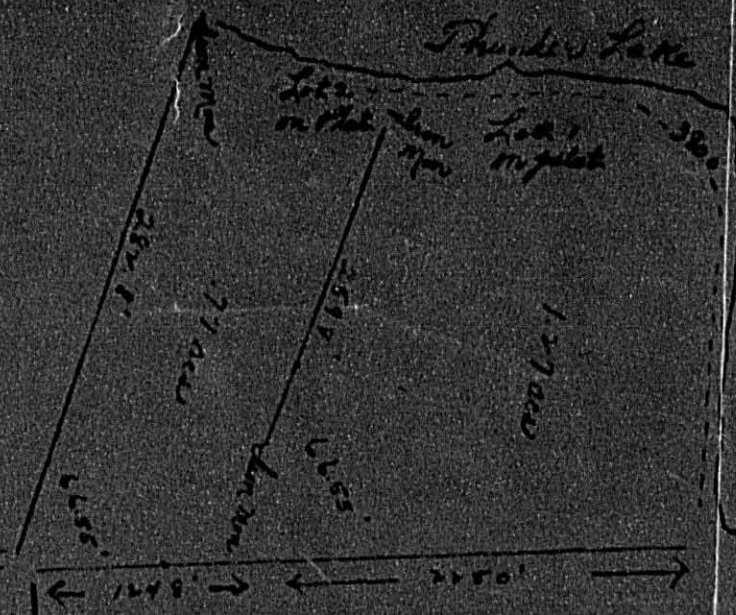
Real Estate

Book Pass, Beach, Birchwood Terrace, Ray Point, Plat of P.F. 6

14000 sq ft of  
land

From boundary  
to 1-1-19-26  
date 1953

about 1000



1/4 cor. Post founded in place

Assessment Roll and Tax List of Real Property in the Town of Thunder Lake

Cass County, Minnesota, for Taxes for the Year 1959.

Form SCD 1958-59 REVISED, MINNAPOLIS. Indicate Type of Property: R-Residential, C-Commercial, I-Industrial, U-Utility, F-Farm, L-Lakeshore, T-Timber, M-Mineral

Table with columns: IN WHOSE NAME ASSESSED, TO WHOM TRANSFERRED, DESCRIPTION OF PROPERTY, TRUE AND FULL VALUATIONS (RURAL, ALL OTHER), VALUATIONS BY SCHOOL DISTRICTS AS EQUALIZED BY DEPARTMENT OF TAXATION, SOLD FOR TAXES, PAID, WHEN PAID, Number of Receipt, March Settlement 1960, June Settlement 1960, November Settlement 1960, Penalty, Collections to First Monday in January 1961, Delinquent on First Monday in January 1961, Total Delinquent Tax and Penalty, REMARKS.

(See 10, continued on next page)

Real Estate, Bank Pass, Park Beach, Park Lawn Beach, Birchwood Terrace, Ray Point, Plat of P.O. 6













Assessment Roll and Tax List of Real Property in the Town of Thunder Lake

Cass County, Minnesota, for Taxes for the Year 1959.

Form SCD MILLER-DAVIS CO., MINNEAPOLIS. \* Indicate Type of Property: R-Residential, C-Commercial, I-Industrial, U-Utility, F-Farm, L-Lakeshore, T-Timber, M-Mineral

Table with columns: IN WHOSE NAME ASSESSED, TO WHOM TRANSFERRED, DESCRIPTION OF PROPERTY, TRU AND FULL VALUATIONS, ASSESSED VALUATIONS, and FINAL EQUALIZED VALUE.

(Sec. 15 continued on Page 20)

Table with columns: VALUATIONS BY SCHOOL DISTRICTS AS EQUALIZED BY DEPARTMENT OF TAXATION, Tax Including State Homestead, SPECIAL TAXES, TOTAL TAXES, PAID, WHEN PAID, Number of Receipt, March Settlement, June Settlement, Penalty, November Settlement, Penalty, Collections to First Monday in January 1961, Delinquent on First Monday in January 1961, Total Delinquent Tax and Penalty, REMARKS.

Real Estate

Cool, Duck Pass, Echo Beach, Oak Park Beach, Oak Lawn Beach, Birchwood Terrace, Bay Point, Plat of P.F. 6

Assessment Roll and Tax List of Real Property in the Town of Thunder Lake

\* Indicate Type of Property: R-Residential, C-Commercial, I-Industrial, U-Utility, F-Farm, L-Lakeshore, T-Timber, M-Mineral

Table with columns: IN WHOSE NAME ASSESSED, TO WHOM TRANSFERRED, DESCRIPTION OF PROPERTY, TRUE AND FULL VALUATIONS, ASSESSED VALUATIONS, and FINAL EQUALIZED VALUE. Includes handwritten entries for Gladys M. Schütz, et al., Roy C. & Evelyn D. Kithiam, Clifford H. & Hazel L. Thomas, etc.

107 50

Cass County, Minnesota, for Taxes for the Year 1959.

Table with columns: SOLD FOR TAXES, VALUATIONS BY SCHOOL DISTRICTS AS EQUALIZED BY DEPARTMENT OF TAXATION, SPECIAL TAXES, TOTAL TAXES, PAID, WHEN PAID, Number of Receipt, March Settlement 1960, June Settlement 1960, November Settlement 1960, Collections to First Monday in January 1961, Delinquent on First Monday in January 1961, Total Delinquent Tax and Penalty, REMARKS. Includes handwritten entries for 1, 2, 3, 4, 5, 6, 7, 8, 9, 10, 11, 12, 13, 14, 15, 16, 17, 18, 19, 20.

Vertical text on the right edge: Duck Passer, Beach, Park, Birchwood Terrace, Ray Point, Plat of P.R. 6







Assessment Roll and Tax List of Real Property in the Town of Thunder Lake, Cass County, Minnesota, for Taxes for the Year 1959.

Form 500

Indicate Type of Property: R-Residential, C-Commercial, I-Industrial, U-Utility, F-Farm, L-Lakeshore, T-Timber, M-Mineral

Main table with columns: IN WHOSE NAME ASSESSED, TO WHOM TRANSFERRED, DESCRIPTION OF PROPERTY, TRUE AND FULL VALUATIONS, ASSESSED VALUATIONS, VALUATIONS BY SCHOOL DISTRICTS AS EQUALIZED BY DEPARTMENT OF TAXATION, SOLD FOR TAXES, PAID, WHEN PAID, etc.

Vertical text on the right edge of the page: Duck Pass, Park Beach, Birchwood Terrace, Ray Point, Plat of P.F. 6







Assessment Roll and Tax List of Real Property in the Town of Thunder Lake

Indicate Type of Property: R-Residential, C-Commercial, I-Industrial, U-Utility, F-Farm, L-Lakeshore, T-Timber, M-Mineral

Cass County, Minnesota, for Taxes for the Year 1959.

Table with columns: IN WHOSE NAME ASSESSED, TO WHOM TRANSFERRED, DESCRIPTION OF PROPERTY, TRUER AND FULL VALUATIONS, ASSESSED VALUATIONS, VALUATIONS BY SCHOOL DISTRICTS AS EQUALIZED BY DEPARTMENT OF TAXATION, SOLD FOR TAXES, SPECIAL TAXES, TOTAL TAXES, PAID, WHEN PAID, Number of Receipt, March Settlement 1960, June Settlement 1960, Penalty, November Settlement 1960, Penalty, Collections to First Monday in January 1961, Penalty, Delinquent on First Monday in January 1961, Total Delinquent Tax and Penalty, REMARKS.

(Sec. 22, continued on next page)

Vertical text on the right edge of the page: Duck Pass, Beach Park, Park Lawn Beach, Birchwood Terrace, Hay Point, Plat of P.F. 6

Assessment Roll and Tax List of Real Property in the Town of Thunder Lake

Cass County, Minnesota, for Taxes for the Year 1959.

Indicate Type of Property: R-Residential, C-Commercial, I-Industrial, U-Utility, F-Farm, L-Lakeshore, T-Timber, M-Mineral

Main table with columns: IN WHOSE NAME ASSESSED, TO WHOM TRANSFERRED, DESCRIPTION OF PROPERTY, TRUE AND FULL VALUATIONS, ASSESSED VALUATIONS, VALUATIONS BY SCHOOL DISTRICTS AS EQUALIZED BY DEPARTMENT OF TAXATION, TAXES, PAID, WHEN PAID, Number of Receipt, March Settlement, June Settlement, November Settlement, Collections to First Monday in January, Delinquent on First Monday in January, Total Delinquent Tax and Penalty, REMARKS.

Russell & Bernadette C. Spimmelbein

Agnes E. Treche

Thos. F. Eich

Shelton O. & Hazel L. Wilmer

Dwight M. & Mabel L. Felkner

Albert J. & Anne Zacher

Clifford H. & Angelle C. Thomas

Franklin L. & Johanna M. Neumann

Vertical text on the right edge: Duck Pass, Birchwood Terrace, Ray Point, P.O. 6



Assessment Roll and Tax List of Real Property in the *Town* of *Thunder Lake*

Form 502 MILLER-DAVIS CO., MINNEAPOLIS

Indicate Type of Property: R-Residential, C-Commercial, I-Industrial, U-Utility, F-Farm, L-Lakeshore, T-Timber, M-Mineral

Table with columns: IN WHOSE NAME ASSESSED, TO WHOM TRANSFERRED, DESCRIPTION OF PROPERTY, TRUE AND FULL VALUATIONS, ASSESSED VALUATIONS, and FINAL EQUALIZED VALUE. Includes handwritten entries for 'Jena Mining Co.' and '160'.

Cass County, Minnesota, for Taxes for the Year 1959.

Table with columns: SOLD FOR TAXES, VALUATIONS BY SCHOOL DISTRICTS AS EQUALIZED BY DEPARTMENT OF TAXATION, Tax including State Homestead, State Tax on Non-Homestead, SPECIAL TAXES, TOTAL TAXES, PAID, WHEN PAID, Number of Receipt, March Settlement 1960, June Settlement 1960, November Settlement 1960, Collections to First Monday in January 1961, Delinquent on First Monday in January 1961, Total Delinquent Tax and Penalty, and REMARKS. Includes handwritten tax amounts and dates.









Assessment Roll and Tax List of Real Property in the Town of Thunder Lake

Indicate Type of Property: R-Residential, C-Commercial, I-Industrial, U-Utility, F-Farm, L-Lakeshore, T-Timber, M-Mineral

Cass County, Minnesota, for Taxes for the Year 1959.

Table with columns: IN WHOSE NAME ASSESSED, TO WHOM TRANSFERRED, DESCRIPTION OF PROPERTY, TRUE AND FULL VALUATIONS, ASSESSED VALUATIONS, VALUATIONS BY SCHOOL DISTRICTS AS EQUALIZED BY DEPARTMENT OF TAXATION, TAXES, PAID, WHEN PAID, Number of Receipt, March Settlement 1960, June Settlement 1960, Penalty, November Settlement 1960, Penalty, Collections to First Monday in January 1961, Penalty, Delinquent on First Monday in January 1961, Total Delinquent Tax and Penalty, REMARKS.

Assessment Roll and Tax List of Real Property in the Town of Thunder Lake

Cass County, Minnesota, for Taxes for the Year 1959.

Form 300... \* Indicate Type of Property: R-Residential, C-Commercial, I-Industrial, U-Utility, F-Farm, L-Lakeshore, T-Timber, M-Mineral

Main table with columns: IN WHOSE NAME ASSESSED, TO WHOM TRANSFERRED, DESCRIPTION OF PROPERTY, TRUE AND FULL VALUATIONS, ASSESSED VALUATIONS, FINAL EQUALIZED VALUE, VALUATIONS BY SCHOOL DISTRICTS AS EQUALIZED BY DEPARTMENT OF TAXATION, SPECIAL TAXES, TOTAL TAXES, PAID, WHEN PAID, Number of Receipt, March Settlement 1960, June Settlement 1960, November Settlement 1960, Collections to First Monday in January 1961, Delinquent on First Monday in January 1961, Total Delinquent Tax and Penalty, REMARKS.

Handwritten entries in the 'IN WHOSE NAME ASSESSED' column: G. H. Thomas, Clifford Archie Thomas, Arnold H. & Mae J. Maas, Ernest B. Swanson, Frank & Ruby Graham, May 3rd Helen A. Allen & Lester E. & Thelma Stover, E. L. & Freda Lind.

Handwritten entries in the 'DESCRIPTION OF PROPERTY' column: Lot 1 less 7.754 less 1.500', Lot 2 less 200' of that part, Lot 3, Lot 4 less 1.200', N. 15' of Lot 1, 1/200' of that part of Lot 2, Lot 5, Lot 6, N. 200' of Lot 4.

Handwritten entries in the 'ASSESSED VALUATIONS' columns: 'yes yes R', 'no " " S', 'yes " " S', 'yes yes R', 'no " " L', 'no yes L', 'no no L', 'yes no L', 'yes yes P', 'no yes P', 'no " " R', '600 added by J.B.', '230'.

Handwritten entries in the 'VALUATIONS BY SCHOOL DISTRICTS' and 'PAID' columns: 63, 140, 100, 238, 10, 59, 1440, 404, 2154, 1562, 2686, 230, 5616, 24756, 2558, 27314, 1538, 3418, 2442, 5810, 244, 1476, 414, 2154, 1562, 2754, 5760, 2766, 17434, 8318, 17387, 17387, 17385, 17385, 17387, 17387, 8318, 17385, 17385, 17385, 8318, 6557, 8935, 17385, 7566, 17383, 9578, 15012, 8939, 769, 769, 1753, 1753, 1221, 1221, 2905, 2905, 125, 125, 1476, 414, 1077, 1077, 781, 781, 1377, 1377, 2880, 2880, 14798, 12888.

Handwritten notes in the 'REMARKS' column: 9610, 14422, 9638, 11, 14422, 9642, 9725, 9638, 9633, Sold R. B. White, 5, 2607-5774 St Chicago 49 34.













Assessment Roll and Tax List of Real Property in the Town of Thunder Lake

Cass County, Minnesota, for Taxes for the Year 1959.

Form 500 MILLER-DAVIS CO., MINNEAPOLIS. Indicate Type of Property: R-Residential, C-Commercial, I-Industrial, U-Utility, F-Farm, L-Lakeshore, T-Timber, M-Mineral

Table with columns: IN WHOSE NAME ASSESSED, TO WHOM TRANSFERRED, DESCRIPTION OF PROPERTY, TRUE AND FULL VALUATIONS, ASSESSED VALUATIONS, VALUATIONS BY SCHOOL DISTRICTS AS EQUALIZED BY DEPARTMENT OF TAXATION, TAXES, PAID, WHEN PAID, Number of Receipt, March Settlement 1960, June Settlement 1960, November Settlement 1960, Collections to First Monday in January 1961, Delinquent on First Monday in January 1961, Total Delinquent Tax and Penalty, REMARKS.

Daisy S. Coffey
Clifford L. & Dean Smith

Orville A. & Lillian A. Flory
John R. & James A. Rolfe

Daisy S. Coffey
State of Minnesota

Franklin M. Dieckrich
Emmett Todd
Gordon Hollin
Eli L. & Ruth L. Steffy

Color
Duck Pass
Beach
Lawn
Terrace
Plat of P. 16

Assessment Roll and Tax List of Real Property in the Town of Thunder Lake

Form SCD MILLER-DAVIS CO., MINNEAPOLIS

Indicate Type of Property: R-Residential, C-Commercial, I-Industrial, U-Utility, F-Farm, L-Lakeshore, T-Timber, M-Mineral

Table with columns: IN WHOSE NAME ASSESSED, TO WHOM TRANSFERRED, DESCRIPTION OF PROPERTY, TRUE AND FULL VALUATIONS, ASSESSED VALUATIONS, and FINAL EQUALIZED VALUE. Includes entries for State of Minnesota and individuals like Robert & Genevieve Randall.

Cass County, Minnesota, for Taxes for the Year 1959.

Table with columns: SOLD FOR TAXES, VALUATIONS BY SCHOOL DISTRICTS AS EQUALIZED BY DEPARTMENT OF TAXATION, Tax including State Homestead, State Tax on Non-Homestead, SPECIAL TAXES, TOTAL TAXES, PAID, WHEN PAID, Number of Receipt, and various Settlement and Penalty columns for 1960.



Assessment Roll and Tax List of Real Property in the \_\_\_\_\_ of \_\_\_\_\_

\* Indicate Type of Property: R-Residential, C-Commercial, I-Industrial, U-Utility, \_\_\_\_\_

IN WHOSE NAME ASSESSED	TO WHOM TRANSFERRED	DESCRIPTION OF PROPERTY				TRUE AND FULL VALUATIONS												REMARKS		
		SUBDIVISION	Sec. of Lot	Town or Block	Rng.	Number of Acres of Land	No. School District	Indicate Homestead Yes or No	Indicate Agricultural Yes or No	Indicate Type Property	LAND Exclusive of Structures and Improvements	BUILDINGS and Other Structures	MACHINERY Permanently Attached to Real Estate	TOTAL True and Full Value	RURAL				Homestead Up to \$4,000 20%	Over \$4,000 and Non-Homestead 33 1/3%
Acres	100ths														Dollars	Dollars	Dollars	Dollars		
1		NE 1/4 of NE 1/4																		
2		NW 1/4 of NE 1/4																		
3		SW 1/4 of NE 1/4																		
4		SE 1/4 of NE 1/4																		
5																				
6		NE 1/4 of NW 1/4																		
7		NW 1/4 of NW 1/4																		
8		SW 1/4 of NW 1/4																		
9		SE 1/4 of NW 1/4																		
10																				
11		NE 1/4 of SW 1/4																		
12		NW 1/4 of SW 1/4																		
13		SW 1/4 of SW 1/4																		
14		SE 1/4 of SW 1/4																		
15																				
16		NE 1/4 of SE 1/4																		
17		NW 1/4 of SE 1/4																		
18		SW 1/4 of SE 1/4																		
19		SE 1/4 of SE 1/4																		
20																				

PAGES  
44

THRU  
54

BLANK

Cass County, Minnesota, for Taxes for the Year 1959.

Tax Including State Homestead	State Tax on Non-Homestead	SPECIAL TAXES	TOTAL TAXES	PAID	WHEN PAID	Number of Receipt	March Settlement 1960	June Settlement 1960	Penalty	November Settlement 1960	Penalty	Collections to First Monday in January 1961	Penalty	Delinquent on First Monday in January 1961	Total Delinquent Tax and Penalty	REMARKS	
																	Mills

Cass County, Minnesota, for Taxes for the Year 1959. Cooley Trail Duck Pass, Peach Park, Lake LeAnn Beach, Birchwood Terrace, Ray Point, P.O. Plat of P.R. 6



Assessment Roll and Tax List of Real Property in the Town of Down of Turtle Lake

Indicate Type of Property: R-Residential, C-Commercial, I-Industrial, U-Utility, F-Farm, L-Lakeshore, T-Timber, M-Mineral

Cass County, Minnesota, for Taxes for the Year 1959.

Table with columns: IN WHOSE NAME ASSESSED, TO WHOM TRANSFERRED, DESCRIPTION OF PROPERTY, TRUE AND FULL VALUATIONS, ASSESSED VALUATIONS, VALUATIONS BY SCHOOL DISTRICTS AS EQUALIZED BY DEPARTMENT OF TAXATION, TAXES, PAID, WHEN PAID, etc.



Assessment Roll and Tax List of Real Property in the Town of Thunder Lake

Cass County, Minnesota, for Taxes for the Year 1959.

Form 5C MILLER-DAVIS CO., MINNEAPOLIS

\* Indicate Type of Property: R-Residential, C-Commercial, I-Industrial, U-Utility, F-Farm, L-Lakeshore, T-Timber, M-Mineral

Table with columns for Property Description, Valuations (Rural, All Other, Machinery, Total Assessed), Taxes (SOLD FOR TAXES, District Rates, State Tax, Special, Total), and Payment Status (PAID, WHEN PAID, Settlement Dates, Penalties, Delinquent Tax and Penalty, Remarks).

Oak Park Beaches

1st Addn Birchwood

1's Bay Shore

Oak Lawn Beach

Birchwood Terrace

Ray Point

2's Plat of P.



Assessment Roll and Tax List of Real Property in the Town of Thunder Lake, Cass County, Minnesota, for Taxes for the Year 1959.

Form 30 MILLER-DAVIS CO., MINNEAPOLIS

Indicate Type of Property: R-Residential, C-Commercial, I-Industrial, U-Utility, F-Farm, L-Lakeshore, T-Timber, M-Mineral

Table with columns: IN WHOSE NAME ASSESSED, TO WHOM TRANSFERRED, DESCRIPTION OF PROPERTY, TRUE AND FULL VALUATIONS, VALUATIONS BY SCHOOL DISTRICTS AS EQUALIZED BY DEPARTMENT OF TAXATION, TAXES, PAID, WHEN PAID, Number of Receipt, March Settlement 1960, June Settlement 1960, Penalty, November Settlement 1960, Penalty, Collections to First Monday in January 1961, Penalty, Delinquent on First Monday in January 1961, Total Delinquent Tax and Penalty, REMARKS.

Vertical text on the left margin: Oak Lawn Beach, Oak Park Beaches, Poley Trail, Duck Pass

Vertical text on the right margin: Birchwood Terrace, Ray Point, P's Plat of P.

Assessment Roll and Tax List of Real Property in the Town of Dundas Lake

Cass County, Minnesota, for Taxes for the Year 1959.

Form 50 MILLER-DAVIS CO., MINNEAPOLIS

Indicate Type of Property: R-Residential, G-Commercial, I-Industrial, U-Utility, F-Farm, L-Lakeshore, T-Timber, M-Mineral

Table with columns for IN WHOSE NAME ASSESSED, TO WHOM TRANSFERRED, DESCRIPTION OF PROPERTY, TRUE AND FULL VALUATIONS, ASSESSED VALUATIONS, VALUATIONS BY SCHOOL DISTRICTS AS EQUALIZED BY DEPARTMENT OF TAXATION, SOLD FOR TAXES, SPECIAL TAXES, TOTAL TAXES, PAID, WHEN PAID, Number of Receipt, March Settlement 1960, June Settlement 1960, Penalty, November Settlement 1960, Collections to First Monday in January 1961, Delinquent on First Monday in January 1961, Total Delinquent Tax and Penalty, REMARKS.

Vertical text on the left margin: Oak Lawn Beach, Oak Park Beaches, Olney Trail Duck Ponds, Real Estate.

Vertical text on the right margin: Birchwood Terrace, Bay Point, P.O. Plat of P., Dundas Lake, Dundas Lake.











Assessment Roll and Tax List of Real Property in the Town of Thunder Lake

\* Indicate Type of Property: R-Residential, C-Commercial, I-Industrial, U-Utility, F-Farm, L-Lakeshore, T-Timber, M-Mineral

IN WHOSE NAME ASSESSED	TO WHOM TRANSFERRED	DESCRIPTION OF PROPERTY					TRUE AND FULL VALUATIONS											FINAL EQUALIZED VALUE	
		SUBDIVISION	Sec. or Lot	Town or Block	No. of Acres of Land	Acres	LAND EXCLUSIVE OF STRUCTURES AND IMPROVEMENTS	BUILDINGS AND OTHER STRUCTURES	MACHINERY Permanently Attached to Real Estate	TOTAL True and Full Value	RURAL			ALL OTHER					
											Homestead Up to \$4,000 20%	Over \$4,000 and Non-Homestead 33 1/8%	Timber Land Class 3e 20%	Homestead Up to \$4,000 25%	Over \$4,000 and Non-Homestead 40%	MACHINERY Permanently Attached to Real Estate 33 1/8%	TOTAL ASSESSED VALUE		Total Assessed Value as Equalized by the Board of Review
Steff & Myrtle V. Shisler		Del Ray Point	1	3															
"	"		2																
Rudolph S. & Mae F. Herbig			3																
Richard J. Yetka			4																
"	"		5																
Walter H. & Bessie Kollath			6																

Cass County, Minnesota, for Taxes for the Year 1959.

SOLD FOR TAXES	VALUATIONS BY SCHOOL DISTRICTS AS EQUALIZED BY DEPARTMENT OF TAXATION						Tax including State Homestead	State Tax on Non-Homestead	SPECIAL TAXES	TOTAL TAXES	PAID	WHEN PAID	Number of Receipt	March Settlement 1960	June Settlement 1960	Penalty	November Settlement 1960	Penalty	Collections to First Monday in January 1961	Penalty	Delinquent on First Monday in January 1961	Total Delinquent Tax and Penalty	REMARKS
	District No.	District No.	District No.	District No.	District No.	District No.																	
	District No.	Rate	District No.	Rate	District No.	Rate	District No.	Rate	District No.	Rate	District No.	Rate	District No.	Rate	District No.	Rate							
1					10		270	06		276	1 PAID IN FULL	MAY 27 1960											
2					10		270	06		276	2 PAID IN FULL	MAY 27 1960	9149		552							9781	
3					60		1614	38		1652	3 PAID IN FULL	MAY 27 1960	9050		1652							9782	
4					10		270	06		276	4 PAID IN FULL	MAY 13 1960			276							9783	
5					10		270	06		276	5 PAID IN FULL	MAY 13 1960	7756		276							9784	
6					157		726	98		4324	6 PAID IN FULL	MAY 13 1960	7762		4324								
7																							
8																							
9																							
10																							
11																							
12																							
13																							
14																							
15																							
16																							
17																							
18																							
19																							
20																							

257                      6920              160                      7080

7080



Assessment Roll and Tax List of Real Property in the Town of Thunder Lake

Form 50 MILLER-DAVIS CO., MINNEAPOLIS

Indicate Type of Property: R-Residential, C-Commercial, I-Industrial, U-Utility, F-Farm, L-Lakeshore, T-Timber, M-Mineral

Cass County, Minnesota, for Taxes for the Year 1959.

Table with columns: IN WHOSE NAME ASSESSED, TO WHOM TRANSFERRED, DESCRIPTION OF PROPERTY, TRUE AND FULL VALUATIONS, ASSESSED VALUATIONS, VALUATIONS BY SCHOOL DISTRICTS AS EQUALIZED BY DEPARTMENT OF TALLATION, SOLD FOR TAXES, SPECIAL TAXES, TOTAL TAXES, PAID, WHEN PAID, Number of Receipt, March Settlement 1960, June Settlement 1960, November Settlement 1960, Collections to First Monday in January 1961, Delinquent on First Monday in January 1961, Total Delinquent Tax and Penalty, REMARKS.

Part of Plat of Sec 9-148-26

Einard O. & Stella C. Rosendahl
Earl C. & Gladys V. Hallquist
Leo Parrish, et al
Albert G. & Ora Parrish
George & Vivian Parrish
Haakon & Anna Johnson
Vernon & Ethel Sinclair
Ray & Berghild Kollery
Ray & Emily Hendrickson
Merwin & Beverly M. Parrish
George L. & Vivian L. Parrish

918 24708 566 25274 19980 3716 3578



Assessment Roll and Tax List of Real Property in the Town of Thunder Lake

Form 50 - MILLER-DAVIS CO., MINNEAPOLIS. \* Indicate Type of Property: R-Residential, C-Commercial, I-Industrial, U-Utility, F-Farm, L-Lakeshore, T-Timber, M-Mineral

Cass County, Minnesota, for Taxes for the Year 1959.

Table with columns: IN WHOSE NAME ASSESSED, TO WHOM TRANSFERRED, SUBDIVISION, Sec. of Lot, Town or Block, Rng., Number of Acres of Land, TRUE AND FULL VALUATIONS, ASSESSED VALUATIONS, VALUATIONS BY SCHOOL DISTRICTS AS EQUALIZED BY DEPARTMENT OF TAXATION, SOLD FOR TAXES, SPECIAL TAXES, TOTAL TAXES, PAID, WHEN PAID, Number of Receipt, March Settlement 1960, June Settlement 1960, November Settlement 1960, Collections to First Monday in January 1961, Delinquent on First Monday in January 1961, Total Delinquent Tax and Penalty, REMARKS.

Handwritten calculations: 112, 197, 269, 7238, 124, 7362, 7362

Vertical text on the left margin: Real Estate, P.F.6, Del Ray Point, Birchwood Terrace, Oak Lawn Beach, Teter's Bay Shore, Park Beaches, Add'n Birchwood Terrace

Personal

Assessment Roll and Tax List of Real Property in the Town of Thunder Lake

Indicate Type of Property: R-Residential, C-Commercial, I-Industrial, U-Utility, F-Farm, L-Lakeshore, T-Timber, M-Mineral

Cass County, Minnesota, for Taxes for the Year 1959.

Form 50 - MILLER-DAVIS CO., MINNEAPOLIS

Main table with columns: IN WHOSE NAME ASSESSED, TO WHOM TRANSFERRED, DESCRIPTION OF PROPERTY, TRUE AND FULL VALUATIONS, ASSESSED VALUATIONS, VALUATIONS BY SCHOOL DISTRICTS AS EQUALIZED BY DEPARTMENT OF TAXATION, SOLD FOR TAXES, SPECIAL TAXES, TOTAL TAXES, PAID, WHEN PAID, etc.

Alvah E. & Ellen L. Elliott

Julie Sand Beach
Pails of
Tide 6 & 7, sec.

Total Acres 10 6,815.90

Outlet A

Grand Totals

Handwritten calculations: 5607, 18947, 24467, 23915, 5426, 12474, 22906, 2440, 5251, 11687, 37688, 48375, 583860, 658378, 1242238, 23464, 1265702

Vertical text on the left edge: Real Estate, Add'n Birchwood Terrace, Peter's Bay Shore, Oak Park Beaches, Oak Lawn Beach, Birchwood Terrace, Del Ray Point, P.F.6

Vertical text on the right edge: Personal