

ASSESSMENT & TAX LIST

Thunder Lake  
1952





SUMMARY OF TAX COLLECTION

Original Levy	- - - - -	\$ 11,661.68	
Additions	- - - - -	\$ 595.32	
			\$ 12,257.00
Abatements	- - - - -	\$ 695.31	
			\$ 11,561.69
COLLECTIONS			
March Settlement	- - - - -	\$ 1,471.98	
June Settlement	- - - - -	\$ 5432.83	
November Settlement	- - - - -	\$ 2,377.08	
January Settlement	- - - - -	\$ 71.50	\$ 9,373.39
			\$ 2,188.30
Over Collected	- - - - -	\$ 45.10	
Under Collected	- - - - -	\$	
Delinquent	- - - - -	\$ 2,233.40	\$ 2,188.30
Total	- - - - -		\$ 11,561.69













Assessment Roll and Tax List of Real Property in the Town of Thunder Lake

Cass County, Minnesota, for Taxes for the Year 1952.

IN WHOSE NAME ASSESSED	TO WHOM TRANSFERRED	DESCRIPTION OF PROPERTY				No. School District	Indicate Homestead Yes or No	Indicate Agricultural Yes or No	TRUE AND FULL VALUATIONS				ASSESSED VALUATIONS					FINAL EQUALIZED VALUE	SOLD FOR TAXES	VALUATIONS BY SCHOOL DISTRICTS AS EQUALIZED BY DEPARTMENT OF TAXATION						Tax including State Homestead Mills	State Tax on Non-Homestead Mills	SPECIAL TAXES	TOTAL TAXES	PAID	WHEN PAID	Number of Receipt	March Settlement 1953	June Settlement 1953	Penalty	November Settlement 1953	Penalty	Collections to First Monday in January 1954	Penalty	Delinquent on First Monday in January 1954	Total Delinquent Tax and Penalty	REMARKS	
		SUBDIVISION	Sec. or Lot	Town or Block	Rdg.				Number of Acres of Land	Machinery Permanently Attached to Real Estate	TOTAL True and Full Value	RURAL		ALL OTHER		Machinery Permanently Attached to Real Estate	TOTAL ASSESSED VALUE			Total Assessed Value as Equalized by the Board of Review	District No.	District No.	District No.	District No.	District No.																		District No.
												Acres	100ks	Homestead Up to \$4,000 20%	Over \$4,000 and Non-Homestead 33 1/3%																												
Roland L. & Scenia M. Dinger		Subdiv. 1	3	140.26	1787	C-1	Yes		255	190	445	89		89		1	SOLD FOR TAXES	78	89			20.34		20.34	1	PAID IN FULL	MAY 27 1953	6196		20.34													
State of Minnesota		SW 1/4 of NE 1/4					No									2																											
John & Corinne Kelner		SE 1/4 of NE 1/4 Lot 1			35.25	No	No		180		180	60		60		4		60				13.70	14	13.84	4	PAID IN FULL	MAY 29 1953	11470		13.84													
Enoch Olson, D.L. Nash, & D.O. Helgeson		NE 1/4 of NW 1/4 Lot 3			33	No	No		30	60	90	30		30		5		30				6.86	06	6.92	5	PAID IN FULL	MAY 27 1953	6961		6.92													
Myron L. & Nellie Sterstrom		NW 1/4 of NW 1/4 Lot 4			32.21	No	No		300	150	450	150		150		6	SOLD FOR TAXES	150				34.28	34	34.62	6	PAID IN FULL	AUG 21 1953	12772		34.62	87												
State of Minnesota		NW 1/4 of NW 1/4														7																											
State of Minnesota		SW 1/4 of NW 1/4														8																											
State of Minnesota		SE 1/4 of NW 1/4														9																											
State of Minnesota		NE 1/4 of SW 1/4														10																											
State of Minnesota		NW 1/4 of SW 1/4														11																											
State of Minnesota		SW 1/4 of SW 1/4														12																											
State of Minnesota		SE 1/4 of SW 1/4														13																											
Garfield A. & Nellie C. Murphy		NE 1/4 of SE 1/4			2	Year	No		60	380	560	88	40	128		14		78	40			29.24	10	29.34	15	1st Half Paid	MAY 11 1953	6010		14.67	1467												
State of Minnesota		NW 1/4 of SE 1/4														16																											
State of Minnesota		SW 1/4 of SE 1/4														17																											
State of Minnesota		SE 1/4 of SE 1/4														18																											
State of Minnesota																19																											
State of Minnesota																20																											
					8767				825	900	1725	177	280	457				127	380	457		104.42	64	105.06						5577	4939												

COURTYN TRAIL-DUCK EAST OAK PARK REARWARDS GOOD FERTILIZER PLAT OF





Form 3CD (52)

DESCRIP

IN WHOSE NAME ASSESSED TO WHOM TRANSFERRED

SUBDIVISIO

ASSESSED VALUATIONS

Total Assessed Value as Equalized by the Board of Review

FINAL EQUALIZED VALUE

VALUATIONS BY SCHOOL DISTRICTS AS EQUALIZED BY DEPARTMENT OF TAXATION

Tax including State Homestead

State Tax on Non-Homestead

SPECIAL TAXES

TOTAL TAXES

PAID

WHEN PAID

Number of Receipt

March Settlement 1953

June Settlement 1953

Penalty

November Settlement 1953

Penalty

Collections to First Monday in January 1954

Penalty

Delinquent on First Monday in January 1954

Total Delinquent Tax and Penalty

REMARKS

Mrs. Hugo Eisenach

1.05 ac. of NE 1/4 of NE 1/4

100' x 500' of Lot 2 + 1/4 ac of Lot 3

0

0

10

228

02

230

1

2nd Half Paid

SEP 30 1953

13875

115

115

Ella Doretta Meeske

1.11 ac. of NE 1/4

30

0

0

25

572

06

578

2

PAID IN FULL

MAY 29 1953

1427

578

State of Minnesota

2.6 ac. of NE 1/4

75

5

5

25

572

06

578

2

PAID IN FULL

MAY 29 1953

1427

578

Irvin C. & Eleanor Becker

3.10 ac. of NE 1/4

36

2

2

12

274

02

276

4

PAID IN FULL

MAY 29 1953

9427

276

Wilhelmina Bluhm

100' x 500' of Lot 2 + 1/4 ac of Lot 3

36

2

2

12

274

02

276

4

PAID IN FULL

MAY 29 1953

9427

276

Cecil A. Bluhm

NE 1/4 of NW 1/4

120

4

4

24

548

02

548

5

PAID IN FULL

MAY 29 1953

9427

276

"

NW 1/4 of NW 1/4

62.5'

2

2

122

2788

02

2788

6

PAID IN FULL

OCT 20 1953

13875

13875

Eare M. Bluhm

SW 1/4 of NW 1/4

62.5'

16

16

46

1052

02

1052

7

PAID IN FULL

MAY 29 1953

11475

526

Eleanor L. Bluhm

SE 1/4 of NW 1/4

62.5'

10

10

10

228

02

230

8

PAID IN FULL

MAY 29 1953

11476

230

Hugh & Lottie Eisenach

5.15 ac. of Lot 1

14 ac

10

10

10

228

02

230

9

PAID IN FULL

MAY 29 1953

11477

230

Cecil Bluhm

NE 1/4 of SW 1/4

14 ac

20

20

128

1371

14

1385

10

PAID IN FULL

MAR 23 1953

3649

1385

Alvan & Ellen Elliot

NW 1/4 of SW 1/4

52

52

52

52

1188

32

1220

12

PAID IN FULL

OCT 20 1953

13875

574

"

SW 1/4 of SW 1/4

142

56

56

114

6490

32

6522

13

PAID IN FULL

OCT 20 1953

13875

548

Cecil A. Bluhm

SE 1/4 of SW 1/4

142

44

44

64

1462

02

1462

13

PAID IN FULL

OCT 20 1953

13875

548

"

NE 1/4 of SE 1/4

142

48

48

48

1096

02

1096

14

PAID IN FULL

MAY 29 1953

11475

548

Cecil A. Bluhm

NW 1/4 of SE 1/4

142

36

36

36

822

02

822

17

PAID IN FULL

OCT 20 1953

13875

411

"

SW 1/4 of SE 1/4

142

76

76

76

1736

02

1736

19

SOLD FOR TAXES

MAY 29 1953

11475

1736

Thomas Musick

SE 1/4 of SE 1/4

142

76

76

76

1736

02

1736

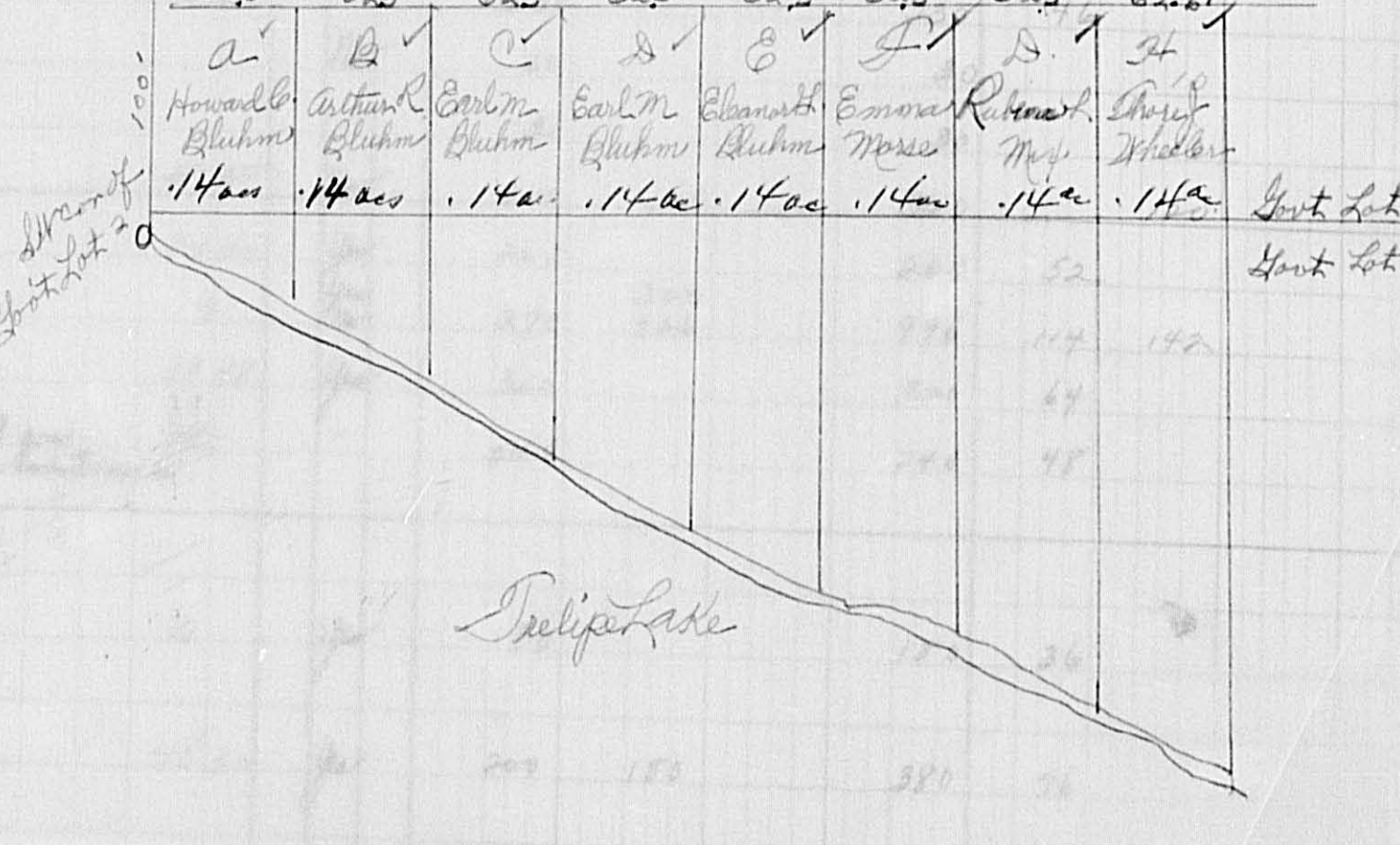
19

SOLD FOR TAXES

MAY 29 1953

11475

1736



338 34 2551 1346 3897 582 329

9.11

H 428 187 655 H-114 = 582 142 = 329 256 = 911

149.64 64.99 214.63 74 215.28

6292 3583

10268 13.85









Assessment Roll and Tax List of Real Property in the Town of Thunder Lake

Form 502 (52) MILLER-BROWN COMPANY, MINNEAPOLIS

Table with columns: IN WHOSE NAME ASSESSED, TO WHOM TRANSFERRED, DESCRIPTION OF PROPERTY, TRUE AND FULL VALUATIONS, ASSESSED VALUATIONS, FINAL EQUALIZED VALUE. Includes handwritten entries for John E. Lange, E. C. Waterhouse, State of Minnesota, Frank X. Henke, Louis G. & Anna G. Henke, and Vera E. Watson.

Cass County, Minnesota, for Taxes for the Year 1952.

Table with columns: SOLD FOR TAXES, VALUATIONS BY SCHOOL DISTRICTS AS EQUALIZED BY DEPARTMENT OF TAXATION, Tax including State Homestead, SPECIAL TAXES, TOTAL TAXES, PAID, WHEN PAID, Number of Receipt, March Settlement 1953, June Settlement 1953, November Settlement 1953, Collections to First Monday in January 1954, Delinquent on First Monday in January 1954, Total Delinquent Tax and Penalty, REMARKS. Includes handwritten tax calculations and payment dates.

























Assessment Roll and Tax List of Real Property in the Town of Thunder Lake, Cass County, Minnesota, for Taxes for the Year 1952.

IN WHOSE NAME ASSESSED	TO WHOM TRANSFERRED	DESCRIPTION OF PROPERTY					TRUE AND FULL VALUATIONS					ASSESSED VALUATIONS					FINAL EQUALIZED VALUE	SOLD FOR TAXES	VALUATIONS BY SCHOOL DISTRICTS AS EQUALIZED BY DEPARTMENT OF TAXATION						Tax including State Homestead	State Tax on Non-Homestead	SPECIAL TAXES	TOTAL TAXES	PAID	WHEN PAID	Number of Receipt	March Settlement 1953	June Settlement 1953	Penalty	November Settlement 1953	Penalty	Collections to First Monday in January 1954	Penalty	Delinquent on First Monday in January 1954	Total Delinquent Tax and Penalty	REMARKS		
		SUBDIVISION	Sec. or Lot	Town or Block	Rtg.	Number of Acres of Land	LAND Exclusive of Structures and Improvements	BUILDINGS and Other Structures	MACHINERY Permanently Attached to Real Estate	TOTAL True and Full Value	RURAL		ALL OTHER		MACHINERY Permanently Attached to Real Estate	TOTAL ASSESSED VALUE			Total Assessed Value as Equalized by the Board of Review	District No.	District No.	District No.	District No.	District No.																		District No.	
											Homestead Up to \$4,000 20%	Over \$4,000 and Non-Homestead 33 1/3%	Homestead Up to \$4,000 25%	Over \$4,000 and Non-Homestead 40%																													Rate
James J. Mc Bride		NE 1/4 of NE 1/4			40	240			240	48				48		1	2	1	2	1	2	1	2	1096	1096	1st Half Paid	MAY 29 1953	11486	1548							548	603						
"		NW 1/4 of NE 1/4 Lot 1			44	490	90	123	703	116	41			157		2	41							3588	3598	2nd Half Paid	MAY 29 1953	11486	1799							1799	1979						
Gordon W. Liestke		SW 1/4 of NE 1/4 Lot 2 less 11.3 acs			1850	346	71		411		137			137		3	137							3130	3160	PAID IN FULL	JAN 20 1953	63	3160														
"		SE 1/4 of NE 1/4			40	240	1086		1326		442			442		4	442							10098	10198	PAID IN FULL	JAN 20 1953		10198														
Clarence & Gladys Hopper		NE 1/4 of NW 1/4 1/2 acre of lot 4			3	90	300		390		130			130		6	130							2970	3000	6th Half Paid	OCT 19 1953	13792	1846									3000					
Arnold L. Stanson		NW 1/4 of NW 1/4 7/2 acre of lot 4			250	60	420		480		160			160		7	160							3656	3692	2nd Half Paid	MAY 29 1953	11496	1846														
Charles M. Niles		SW 1/4 of NW 1/4 1/2 acre of lot 5			268	75			75		25			25		8	25							572	578	PAID IN FULL	MAY 29 1953	11498	578														
Betty Mohr		SE 1/4 of NW 1/4 1/2 acre of lot 7			10	240	360		600		200			200		9	200							4570	4616	PAID IN FULL	FEB 28 1953	2236	4616									Paid Under Protest					
Henry & Julia Hanson		NE 1/4 of SW 1/4 1/2 acre of lot 5 less E. 350'			1523	150	150		1900	380				380		11	380							9632	9632	Balance Paid	APR 29 1953	3881	1142										Hanson's share Paid				
N. St. Lady, Jr.		NW 1/4 of SW 1/4 1/2 acre of lot 5			630	180	600		780		260			260		12	260							3564	3598	PAID IN FULL	MAY 16 1953	5818	5998										Refund W. #1248 9-10-53 24 <sup>34</sup>				
John St. Loos		SW 1/4 of SW 1/4 1/2 acre of lot 5			750	230	670		900	180				180		13	180							4112	4112	PAID IN FULL	MAY 29 1953	11494	4112														
Laura Lillian Lenneson Erickson		SE 1/4 of SW 1/4 Lot 6			57	600	183		783		261			261		14	261							5964	6022																		
Charles M. Niles		NE 1/4 of SE 1/4 1/2 acre of lot 5			203	30			30		10			10		16	10							228	230	PAID IN FULL	MAY 29 1953	11498	230														
Kenneth Augustus Ethel Stalfen		NW 1/4 of SE 1/4 1/2 acre of lot 5			1072	240	260		450		150			150		17	150							3428	3462	PAID IN FULL	FEB 24 1953	1671	3462														
John A. Mc Kay		SW 1/4 of SE 1/4 1/2 acre of lot 5			268	60	300		360		120			120		18	120							2742	2770	2nd Half Paid	OCT 31 1953	15834	1385														
Dr. C. M. Niles		SE 1/4 of SE 1/4 1/2 acre of lot 5			406	120	300		420		140			140		19	140							3198	3230	PAID IN FULL	MAY 29 1953	11498	3230														
Frederick M. & Florence M. Erickson		E. 350' of N. 175' of S. 530' of lot 5			26620	3535	6313		9848	724	2076			2800		20	2800							55292	65294																		

COOLEY TRAIL-DUCK FIRST OAK PARK BRANCHES FOOD MARKET GOOD MARKET PLAT OF P





Assessment Roll and Tax List of Real Property in the Town of Thunder Lake,

Table with columns: IN WHOSE NAME ASSESSED, TO WHOM TRANSFERRED, DESCRIPTION OF PROPERTY, TRUE AND FULL VALUATIONS, ASSESSED VALUATIONS, FINAL EQUALIZED VALUE. Includes handwritten entries for various lots and subdivisions.

Cass County, Minnesota, for Taxes for the Year 1952.

Table with columns: SOLD FOR TAXES, VALUATIONS BY SCHOOL DISTRICTS AS EQUALIZED BY DEPARTMENT OF TAXATION, Tax including State Homestead, State Tax on Non-Homestead, SPECIAL TAXES, TOTAL TAXES, PAID, WHEN PAID, Number of Receipt, March Settlement 1953, June Settlement 1953, Penalty, November Settlement 1953, Collections to First Monday in January 1954, Delinquent on First Monday in January 1954, Total Delinquent Tax and Penalty, REMARKS. Includes handwritten entries for various tax lots and payments.



























Assessment Roll

La 27-140-26

Thunder Lake

IN WHOSE NAME ASSESSED	TO WHOM TRANSFERRED	ACRES	TRUE AND FULL VALUATIONS
Electra Thrall	7.132 1/2 of S. 740	3.00	Electra Thrall
"Alta B. Vore"	7.132 1/2 of S. 740	4.00	J. C. White
Louise M. Mattson	4 acs of 716	5.5	Willis + Alta H. Copeman
Leroy + Katherine Baab	1600 ft. 10 7.6 1/4 of S. 64	10	10 acs
Edmer + Bessie Vollrath	5.5 acs	14.00	14.00 acs
State of Minnesota	10 acs of 716 1/2		
Agnos C. Knudson	20 acs of S. 249		
Andrew + Lillian A. Danielson	7.250 of S. 440 of 100.00 of 100.00	1332	390
Ernest B. Swanson	10 500' x 820' in S.W. cor. of Lot 2	940	180
A. C. Severson	6.500 of 7.1320 of Lot 2	15	300
Willis + Alta H. Copeman	7.462 of S. 528 of Lot 5	550	150 510
"	7.462 of S. 528 of 716 1/2 of S. 64	14	120
J. C. White	7.800 of S. 608 of 716 1/2 of S. 64	4	120
Halten H. Mortenson	7.250 of S. 221 9	15	185 600 702

ASSESSED VALUATIONS							TOTAL ASSESSED VALUE	Total Assessed Value as Equalized by the Board of Review	FINAL EQUALIZED VALUE
RURAL		ALL OTHER		MACHINERY	TOTAL ASSESSED VALUE	Total Assessed Value as Equalized by the Board of Review			
Homestead Up to \$4,000 20%	Over \$4,000 and Non-Homestead 33 1/3%	Homestead Up to \$4,000 25%	Over \$4,000 and Non-Homestead 40%	Permanently Attached to Real Estate 33 1/3%			Dollars	Dollars	Dollars
	40				40				
	30				30				
	144				144				
	50				50				
	76	25			101				
	167				167				
	130				130				
	60				60				
	100				100				
	220				220				
	40				40				
	40				40				
	157	600	234		391				
	128 72	2555	2450	505	233	1280		1513	

Cass County, Minnesota, for Taxes for the Year 1952.

SOLD FOR TAXES	VALUATIONS BY SCHOOL DISTRICTS AS EQUALIZED BY DEPARTMENT OF TAXATION						Tax including State Homestead	State Tax on Non-Homestead	SPECIAL TAXES	TOTAL TAXES	PAID	WHEN PAID	Number of Receipt	March Settlement 1953	June Settlement 1953	Penalty	November Settlement 1953	Penalty	Collections to First Monday in January 1954	Penalty	Delinquent on First Monday in January 1954	Total Delinquent Tax and Penalty	REMARKS	
	District No. 1	District No. 2	District No. 3	District No. 4	District No. 5	District No. 6																		
1	40						9 14	10		9 24	1 PAID IN FULL	FEB 5 1953												
2	30						6 86	06		6 92	2 PAID IN FULL	FEB 5 1953												
3	144						3 290	32		3 322	3 PAID IN FULL	MAY 29 1953	11523											
4	50						11 42	12		11 54	4 PAID IN FULL	FEB 28 1953	4104											
5																								
6	76	25					23 08	06		23 14	6 PAID IN FULL	MAY 29 1953	11576											
7																								
8	167						38 16	38		38 54	8 2nd Half Paid	OCT 31 1953	15539											
9	130						29 70	30		30 00	9 PAID IN FULL	MAY 29 1953	11521											
10	60						13 70	14		13 84	10 2nd Half Paid	OCT 26 1953	11540											
11	100						22 84	22		23 06	11 PAID IN FULL	MAY 29 1953	11520											
12																								
13	220						50 26	60		50 76	13 PAID IN FULL	MAY 29 1953	11578											
14	40						9 14	10		9 24	14 PAID IN FULL	MAY 29 1953	11578											
15	40						9 14	10		9 24	15 PAID IN FULL	MAY 29 1953	11525											
16																								
17																								
18																								
19																								
20																								
1 SOLD FOR TAXES							99 12	52		99 64														
20							25634	292		25926														
H. 76 + 1046							1122 +																	
H 157 = 233							234 = 1280																	
H 157 + 234 = 1513																								
2770 20485 2619																								

COOLEY TRAIL-DUCK PASTURE PARK BEACHES GOOD FERRIS PLAT OF P. F.

















Assessment Roll and Tax List of Real Property in the Town of Down of Thunder Lake

IN WHOSE NAME ASSESSED	TO WHOM TRANSFERRED	DESCRIPTION OF PROPERTY			No. School District	Indicate Homestead Yes or No	Indicate Agricultural Yes or No	TRUE AND FULL VALUATIONS			ASSESSED VALUATIONS					FINAL EQUALIZED VALUE		
		SUBDIVISION	Sec. or Lot	Town or Block				Rng.	Number of Acres of Land	TOTAL True and Full Value	RURAL		ALL OTHER		MACHINERY Permanently Attached to Real Estate		TOTAL ASSESSED VALUE	Total Assessed Value as Equalized by the Board of Review
											Acres	100ths	Homestead Up to \$4,000 20%	Over \$4,000 and Non-Homestead 33 1/3%				
Daisy S. Coffey		NE 1/4 of NE 1/4	Lot 1	34 140	26	40.10	C1	No	480			480	160		160			
"	"	NW 1/4 of NE 1/4	Lot 2			2450	"	"	220	80		300	100		100			
Clifford C. + Pearl Smith		SW 1/4 of NE 1/4				40	"	"	240			240	80		80			
		SE 1/4 of NE 1/4				40	"	"	420	60		480	160		160			
S. T. + Florence Sheppard		NE 1/4 of NW 1/4	Lot 3 less 71.300' + less 200' along lake in d. H. Cor. of Lot 3			2489	No	No	270	420		690	230		230			
John R. + James A. Rolfe		NW 1/4 of NW 1/4	Lot 4			3324	"	"	450	222		672	224		224			
State of Minnesota		SW 1/4 of NW 1/4																
State of Minnesota		SE 1/4 of NW 1/4																
Daisy S. Coffey			7.300' of Lot 3			318	"	"	90			90	30		30			
State of Minnesota		NE 1/4 of SW 1/4																
State of Minnesota		NW 1/4 of SW 1/4																
State of Minnesota		SW 1/4 of SW 1/4																
State of Minnesota		SE 1/4 of SW 1/4																
Franklin M. Diedrich		NE 1/4 of SE 1/4				40	Yes	"	370	880		1250	250		250			
"		NW 1/4 of SE 1/4				40	Yes	"	480	880		480	96		96			
Emmett Todd		SW 1/4 of SE 1/4				40	"	"	320			320	64		64			
Lillian + Gordon Hoelgin		SE 1/4 of SE 1/4				40	"	"	305	720		1025	205		205			
Lawrence + Helen Johnson			200' along lake in d. H. corner of Lot 3			218	No	"	65	220		285	95		95			
Emmett + Gustafson						36809			3710	2602		6312	615	1079	1694			

Cass County, Minnesota, for Taxes for the Year 1952.

SOLD FOR TAXES	VALUATIONS BY SCHOOL DISTRICTS AS EQUALIZED BY DEPARTMENT OF TAXATION						Tax including State Homestead	State Tax on Non-Homestead	SPECIAL TAXES	TOTAL TAXES	PAID	WHEN PAID	Number of Receipt	March Settlement 1953	June Settlement 1953	Penalty	November Settlement 1953	Penalty	Collections to First Monday in January 1954	Penalty	Delinquent on First Monday in January 1954	Total Delinquent Tax and Penalty	REMARKS	
	District No. 1	District No. 2	District No. 3	District No. 4	District No. 5	District No. 6																		
	Rate	Rate	Rate	Rate	Rate	Rate																		
1	160						36.56	36		36.92	1 PAID IN FULL	APR 16 1953												
2	100						22.84	22		23.06	2 PAID IN FULL	APR 16 1953	3257											
3	80						18.28	18		18.46	3 PAID IN FULL	APR 16 1953												
4	160						36.56	36		36.92	4 Part Paid	MAY 29 1953	7405								2672	2961		
5																								
6	230						52.56	52		53.08	6 2nd Half Paid	OCT 15 1953	13713								2654	2654		
7	224						51.18	50		51.68	7 Part Paid	OCT 31 1953	15835								2436	2732	3005	13th due 27.32 (penalty) 1st half pen. 1.70 due
8																								
9																								
10	30						6.96	06		6.92	10 PAID IN FULL	APR 16 1953	3257								692			
11																								
12																								
13																								
14																								
15																								
16 SOLD FOR TAXES	250						57.12			57.12	16 2nd Half Paid	OCT 31 1953	6224								2856	2856		
17 SOLD FOR TAXES	96						21.94			21.94	17 1st Half Paid	MAY 29 1953	15838								1097	1097		
18	64						14.62			14.62	18 PAID IN FULL	MAY 29 1953	11530								1462			
19	205						46.84			46.84	19 PAID IN FULL	MAY 29 1953	6582								4684			
20 SOLD FOR TAXES	95						21.70	22		21.92	20													
	1694						387.06	242		389.48											225.89	9043		

COOPER TRAIL-DUCK PAST OAK PARK BLDG'S BOOD BRIDGE IN TOWN Plat of P.F. 6

















Assessment Roll and Tax List of Real Property in the Town of Thunder Lake

Form 50 (52) JULY 1950 EDITION, MINNESOTA

Table with columns: IN WHOSE NAME ASSESSED, TO WHOM TRANSFERRED, DESCRIPTION OF PROPERTY, TRUE AND FULL VALUATIONS, ASSESSED VALUATIONS, FINAL EQUALIZED VALUE.

Cass County, Minnesota, for Taxes for the Year 1952.

Table with columns: VALUATIONS BY SCHOOL DISTRICTS AS EQUALIZED BY DEPARTMENT OF TAXATION, Tax including State Homestead, State Tax on Non-Homestead, SPECIAL TAXES, TOTAL TAXES, PAID, WHEN PAID, Number of Receipt, March Settlement, June Settlement, November Settlement, Collections to First Monday in January, Delinquent on First Monday in January, Total Delinquent Tax and Penalty, REMARKS.

OAK PARK BEACHES

BROOKWOOD TERRACE

PAY POINT

Plat of P.F. 6













