

ASSESSMENT & TAX LIST

Thunder Lake

1947

List of Lands in the Township of Thunder Lake, County of Ross, Minn., for the Year 1947, Which have Become Homesteads or Ceased to be Homesteads
 SINCE THE LAST REAL ESTATE ASSESSMENT DATE

Form 214 Miller-Davis Company, Minneapolis, State Form No. 67

LANDS BECOMING HOMESTEADS						LANDS CEASING TO BE HOMESTEADS					
NAME OF OWNER	School District	DESCRIPTION OF PROPERTY SUBDIVISION	Sec.	Town	Number	NAME OF OWNER	School District	DESCRIPTION OF PROPERTY SUBDIVISION	Sec.	Town	Number
			or Lot	or Block	of Acres of Land Range Acres 100ths				or Lot	or Block	of Acres of Land Range Acres 100ths
Gottfried & Martha Sieffert	un	S. 178' of W. 268' of SW ⁴ of SW ⁴	2	140 26	2 ✓	Gottfried & Martha Sieffert	un	NE ⁴ of NE ⁴	11	140 26	40 ✓
Francis E. & M. W. Cady Jr.	un	N. 157' of S. 355' of Lot 5	5	140 26	6.30 ✓	" " "	un	NE ⁴ of NW ⁴	13	140 26	40 ✓
C. H. & Hazel C. Thomas	un	Lot 2 less 500' x 820' + less 500' x 1320'	27	140 26	13.60 ✓	" " "	un	NW ⁴ of NW ⁴	13	140 26	40 ✓
C. H. Thomas	un	Lot 1 less N 75' + N. 75' of Lot 1	28	140 26	1.75 ✓	" " "	un	NE ⁴ of NE ⁴	14	140 26	40 ✓
Ambrose Battineson	un	N. 1/2 of SE ⁴ of NE ⁴	34	140 26	20 ✓						

INCREASE OR DECREASE in Value of Property Heretofore Assessed, by the Erection or Destruction of Buildings or Structures Thereon

Platted Property Assessed at 40 Per Cent of True and Full Value.
(Homesteads up to \$4,000 True and Full Value 25 Per Cent.)

Unplatted Property Assessed at 33 1/2 Per Cent of True and Full Value.
(Homesteads up to \$4,000 True and Full Value 20 Per Cent.)

FORM 3 MILLER-DAY COMPANY, MINNEAPOLIS

NAMES OF PROPERTY OWNERS	DESCRIPTION	Sec. or Lot	Town or Block	Rng.	True and Full Value of Structures worth more than \$100 each Dollars	KIND OF STRUCTURES	Assessed Value of Additional Structures Dollars	Reduction of Assessed Value on Account of Loss occasioned by Fire, Flood or otherwise Dollars
Gordon W. Kieske	Lot 2 less n. 3 acres	15	140	26	300	garage	100	✓
Frances E. + N.W. Cady Jr.	n. 157' of s. 355' of lot 5	15	140	26	200	house	40	✓
Cecil R. + Marvin P. Feter	Lot 2	16	140	26	300	Cabins	100	✓
Donald F. + Blanche F. Kehne	Lot 1 less 150' x 240' + 100' x 215'	19	140	26	210	house	70	✓
Lena H. Williams	Lot 1	21	140	26	210	all in one (garage + bathhouse)	70	✓
Geo. H. Bluhm	3 acres of lot 2	22	140	26	100	cabins	20	✓
Walter H. Martinsons	15 acres of lot 9	27	140	26	80	ice house + store house	16	✓
C. H. + Hazel C. Thomas	Lot 1 less n. 75'	28	140	26	200	Lodge	40	✓
D. J. + Florence Sheppard	Lot 3 less n. 300'	34	140	26	200	ice house	48	✓
						garage	40	✓
						house	70	✓

INCREASE OR DECREASE in Value of Property Heretofore Assessed, by the Erection or Destruction of Buildings or Structures Thereon

Platted Property Assessed at 40 Per Cent of True and Full Value.
(Homesteads up to \$4,000 True and Full Value 25 Per Cent.)

Unplatted Property Assessed at 33 1/2 Per Cent of True and Full Value.
(Homesteads up to \$4,000 True and Full Value 20 Per Cent.)

FORM 3 MILLER-DAY COMPANY, MINNEAPOLIS

NAMES OF PROPERTY OWNERS	DESCRIPTION	Sec. or Lot	Town or Block	Rng.	True and Full Value of Structures worth more than \$100 each Dollars	KIND OF STRUCTURES	Assessed Value of Additional Structures Dollars	Reduction of Assessed Value on Account of Loss occasioned by Fire, Flood or otherwise Dollars
Franklin M. Dieblich (George Ebner)	n E ⁴ of s E ⁴	34	140	26	300	house	60	✓
Herbert + Ester Seiffert	n E ⁴ of s W ⁴	2	140	26	90	lot in	18 30	✓
Peter A. + Emma Streblo	Oak Park Beaches Lot 14	14	140	26	50	store house	17 20	✓
Ernest + Mildred E. Watkins	Oak Park Beaches lot 19	14	26		5	rent house	8	✓

Assessment of

Form 315 MILLER-DAYE COMPANY, MINNEAPOLIS

NAME OF OWNER

- 1
- 2
- 3
- 4
- 5
- 6
- 7

Treasurer's Office, Cass County, Minnesota

RECEIVED this, the first Monday (being the 5th day) of January, A. D. 1948, of L. C. Peterson, Auditor of said County, Minnesota, the Tax List of all Taxable Real and Personal Property in the Town of Thunder Lake in said County for the year A. D. 1947, as specified above and amounting to _____ Dollars

Paul D. Jewell
County Treasurer.

Office of County Treasurer, Cass County, Minnesota

JAN - 3 1948 194

To L. C. Peterson, County Auditor:
Sincerely with return to you the Tax List for the Town of Thunder Lake in said County for the year 1947, heretofore received from you. I certify that I have compared the same with the duplicate receipts in your office, and have written opposite the amount of each tax so received the words "First Quarter Paid", "Second Quarter Paid", "Third Quarter Paid" or "Paid in full" as the case may be, and the number of my receipt given in discharge of said tax, and each tract or lot of real property against which the taxes remain unpaid is delinquent for said year.

Yours respectfully,
Paul D. Jewell
County Treasurer.

Auditor's Office, Cass County, Minnesota

I, _____ Auditor of said County, and State of Minnesota, do hereby certify that the following is a correct list of the Taxes levied on the Real and Personal Property in the _____ of _____ for the year 1947.

WITNESS my hand and official seal, the _____ day of _____ 1948.

(SEAL) _____ County Auditor.

Auditor's Office, Cass County, Minnesota

I hereby certify that on the first Monday in January 1948, I received of _____ 194 _____ County Treasurer, the Tax List of the _____ of _____ in said County for the year 1947; that I have compared the said list with the Statements received for by said Treasurer, which are on file in my office, and that each tract or lot of real property therein against which the taxes, or any part thereof, remains unpaid are delinquent for said year.

(SEAL) _____ County Auditor.

Assessment of

Form 3 1/2 MILLER-DAY COMPANY, MINNEAPOLIS

TABULAR SCHEDULE OF VALUATIONS,
LEVIED IN THE *Township of Thunder Lake*

RATES AND TAXES
COUNTY OF CASS, STATE OF MINNESOTA

School District No.	VALUATION BY SCHOOL DISTRICTS					RATE OF STATE TAXES					RATE OF COUNTY TAXES					RATE OF TOWN TAXES									
	Dollars	Dollars	Dollars	Dollars	Dollars	State Rev.	State Sch'l	Tehr. Ins.	State Debt	Total Rate of State Tax	Rev.	R. & B.	Welfare	Bonds and Int.	Total Rate of County Tax	Rev.	R. & B.	Drag Tax	State Loan	Fire	Total Rate of Town Tax				
1			23125	3709	3016	29850				3.02	22.	7.2	48.	18.	95.2	87	15.	1.		5.	29.7				
2																									
3																									
4																									
5																									
6																									
7																									

Val = R.G. 14 4357
 174 22477
 P.P. 3016
29,850

Rural 26834 Urban 3016 P.P. 3016 Total 29850

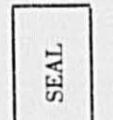
h.H 407
 709

RATE OF SCHOOL TAXES										LOCAL 1 MILL AND SPECIAL SCHOOL TAXES BY DISTRICTS										ALL OTHER TAXES		
Local	Special	State Loan	Transp.	C.O.	B+L	Total Rate of Sch'l Tax	Total Rate of all Taxes	Local 1 Mill	Special	State Loan	Transp.	C.O.	B+L	Total School Taxes	FUNDS	Rate	Amounts					
1	15.	15.	18.	5.	27.1	64.9	192.82	2313	34688	34688	4163	11563	6269	150884	State Revenue,							
2	30.	15.	18.	5.	27.1	79.9	207.82	723	20175	10088	1210	3363	18225	53734	State School,							
3															Teachers Insurance,							
4															State Debt—Non-Homestead,							
5															State Debt—Homestead,							
6															County Revenue,							
7															County Road and Bridge,							
															County Welfare,							
															Bonds and Interest							
															Town Revenue,							
															Town Road and Bridge,							
															Town Drag,							
															Town State Loan,							
															Fire							
															School Local 1 Mill,							
															School Special,							
															School State Loan,							
															Def. Transp.							
															C.O.							
															B+L							

Total Levy, \$ 59602
 10320
 9037
 65670
 21492
 143280
 53730
 25970
 44775
 2985
 14925
 2986
 54863
 44776
 5373
 14926
 80894
 596002
 R.G. 5321.08
 P.P. 638.94
 5960.02

Total Number of Acres
 State of Minnesota,
 COUNTY OF CASS
 Auditor of said County and State aforesaid, do hereby certify that the foregoing is true and correct schedule, showing the valuation of all the taxable property, in the several Tax Funds levied thereon for the year A. D. 1917
 of *Thunder Lake*, in said County, the several rates of Taxation and Totals of the several Tax Funds levied thereon for the year A. D. 1917
 Witness my hand and official seal, this *30* day of *Dec* A. D. 1917

L. C. Peterson
 County Auditor



PRIMAL

Coolidge Trail
 Duck Pass
 Oak Park
 Beaches
 Beach
 Oak Lawn
 Birchwood
 Terrace

Assessment Roll and Tax List of Real Property in the

Town of Thunder Lake

Cass County, Minnesota, for Taxes for the Year 1947.

IN WHOSE NAME ASSESSED	TO WHOM TRANSFERRED	DESCRIPTION OF PROPERTY				TRUE AND FULL VALUATIONS				ASSESSED VALUATIONS					FINAL EQUALIZED VALUE			
		Subdivision	Sec. or Lot	Town or Block	Rng.	Number of Acres of Land	LAND EXCLUSIVE OF STRUCTURES AND IMPROVEMENTS	BUILDINGS AND OTHER STRUCTURES	MACHINERY PERMANENTLY ATTACHED TO REAL ESTATE	TOTAL TRUE AND FULL VALUE	RURAL		ALL OTHER			MACHINERY PERMANENTLY ATTACHED TO REAL ESTATE	TOTAL ASSESSED VALUE	Total Assessed Value as Equalized by the Board of Review
											Acres	100ths	Homestead Up to \$4,000 20%	Over \$4,000 and Non-Homestead 33 1/3%				
Holland L. & Lucia M. Winger	Hege E. & Sylvia L. Henke	All of Lot 2 S. of N. 1/2 + also the W. 200' of E. 300' of that part of Lot 2 lying between Big Rice Lake + a line of extended W. from S. W. corner of Lot 9, Cooley Trail Duck Pond	3	140	26	19	87	40	19	87	40							
State of Minnesota		2 NW 1/4 of NE 1/4																
State of Minnesota		3 SW 1/4 of NE 1/4																
Maebel McWay	Enok Olson, S. K. Nash + J. O. Helgeson	4 SE 1/4 of NE 1/4 Lot 1				35	25											
State of Minnesota		6 NE 1/4 of NW 1/4 Lot 3				32	22											
State of Minnesota		7 NW 1/4 of NW 1/4 " 4																
State of Minnesota		8 SW 1/4 of NW 1/4																
State of Minnesota		9 SE 1/4 of NW 1/4																
State of Minnesota		10																
State of Minnesota		11 NE 1/4 of SW 1/4																
State of Minnesota		12 NW 1/4 of SW 1/4																
State of Minnesota		13 SW 1/4 of SW 1/4																
State of Minnesota		14 SE 1/4 of SW 1/4																
Garfield A. + Nellie P. Murphy		15 W. 400' of E. 700' of that part of Lot 2 lying between Big Rice Lake + a line of extended W. from S. W. corner of Lot 9, Cooley Trail Duck Pond																
State of Minnesota		16 NE 1/4 of SE 1/4																
State of Minnesota		17 NW 1/4 of SE 1/4																
State of Minnesota		18 SW 1/4 of SE 1/4																
H. L. Co.	State of Minnesota	19 SE 1/4 of SE 1/4				40												
		20																

SOLD FOR TAXES	VALUATIONS BY SCHOOL DISTRICTS AS EQUALIZED BY DEPARTMENT OF TAXATION						Tax including State Homestead	State Tax on Non-Homestead	SPECIAL TAXES	TOTAL TAXES	PAID	WHEN PAID	Number of Receipt	March Settlement 1948	June Settlement 1948	Penalty	November Settlement 1948	Penalty	Collections to First Monday in January 1949	Penalty	Delinquent on First Monday in January 1949	Total Delinquent Tax and Penalty	REMARKS
	District No.	District No.	District No.	District No.	District No.	District No.																	
	Rate	Rate	Rate	Rate	Rate	Rate																	
1						64	1234	26	1260	PAID IN FULL	Aug. 9 1948	10789								1260	32		
2																							
3																							
4						57	1100	24	1124	PAID IN FULL	JUL. 14 1948	10240											
5						11	212	04	216	PAID IN FULL	MAY 27 1948	5474											
6						111	2140	46	2186														
7																							
8																							
9																							
10																							
11																							
12																							
13																							
14																							
15						48	926	20	946	PAID IN FULL	JUN 22 1948	8367											
16																							
17																							
18																							
19																							
20																							

13.76 Cancelled

Cooley Trail Duck Pond Oak Park Beach Oak Lawn Terrace Birchwood

Form 4 CD - 1947 - DATE COMPILED, WASHINGTON

IN WHOSE NAME ASSESSED TO WHOM TRANSFERRED

Edwin C. Waterhouse

Lot 4 less platted and less beginning at NE corner of Terrace, N. 550'; W. to Twp. road to NW corner of Lot 3; E. Also starting at a point 80' Lot 3, Blk 2, B.T., thence S. along road 150'; E. to

Ernest B. + Maude E. Collette

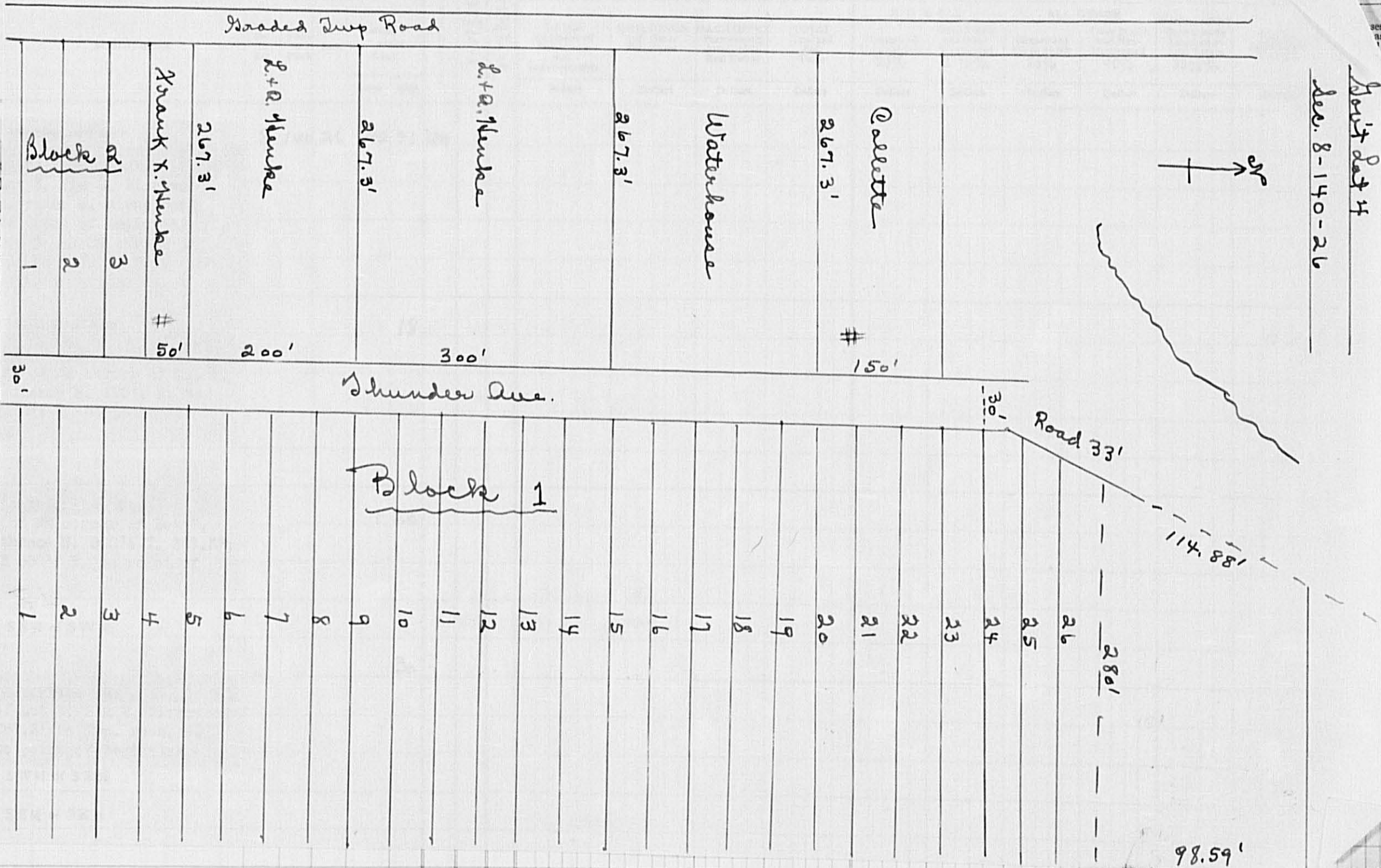
Part of Lot 4 described starting at a point 800' Blk 2, Birchwood Terrace; Twp. road; S. along road beginning.

Louis C. + Anna C. Henke

500' x 267.3' of Gov't Lot starting at a point 50' N. Blk 2, Birchwood Terrace, to Twp. road; S. along road beginning.

Frank Henke

50' x 267.3' of Gov't Lot 4 starting at the NE corner Terrace, thence N. 50'; W. to NW corner of Lot 3; E.



Dec. 8-140-26

Assessed as 1/4 of

FINAL EQUALIZED VALUE

Dollars

SOLD FOR TAXES

11 60
56
116

22 36

22 58

116

SOLD FOR TAXES	VALUATIONS BY SCHOOL DISTRICTS AS EQUALIZED BY DEPARTMENT OF TAXATION						Tax including State Homestead	State Tax on Non-Homestead	SPECIAL TAXES	TOTAL TAXES	PAID	WHEN PAID	Number of Receipt	March Settlement 1948	June Settlement 1948	Penalty	November Settlement 1948	Penalty	Collections to First Monday in January 1949	Penalty	Delinquent on First Monday in January 1949	Total Delinquent Tax and Penalty	REMARKS
	District No.	District No.	District No.	District No.	District No.	District No.																	
1																							
2																							
3																							
4																							
5																							
6																							
7																							
8																							
9																							
10																							
11																							
12																							
13																							
14																							
15																							
16																							
17																							
18																							
19																							
20																							

1156 7272

Dec. 8-140-26

SOLD FOR TAXES

11 60
56
116

22 36

22 58

116

Form 4 C.D. HALL-SAY COMPANY, MINNEAPOLIS

IN WHOSE NAME ASSESSED	TO WHOM TRANSFERRED	DESCRIPTION OF PROPERTY					Acres	100ths
		SUBDIVISION	Sec. or Lot	Town or Block	Rng.	Number of Acres of Land		
James J. Mc Bride		NE 1/4 of NE 1/4	15	140	26	40		
"		NW 1/4 of NE 1/4 Lat 1				44		
Gordon W. Gieske		Lat 2 less 7.3 acs. SW 1/4 of NE 1/4				18.50		
"		SE 1/4 of NE 1/4				40		
Clarence + Gladys Hopper		7.3 acs of Lat 2 NE 1/4 of NW 1/4				3		
Arnold C. Stanson		7.2 1/2 acs of Lat 7 NW 1/4 of NW 1/4				2.50		
Charles M. Niles		7.66' of S 876' of Lat 5 SW 1/4 of NW 1/4				2.68		
Betty Mohr		7 1/2 of Lat 7 SE 1/4 of NW 1/4				10		
Henry S. + Julia Hanson		7.175' of S. 530' of Lat 5 + NE 1/4 of SW 1/4 S. 198' of Lat 5				15.23		
Frances G. + M.W. Cady, Jr.		7.157' of S 355' of Lat 5 NW 1/4 of SW 1/4				6.30		
John W. Paar		10 acs of Lat 7 less 2.5 acs. SW 1/4 of SW 1/4				7.50		
A. L. Bogen	Small Thompson + Lawrence B. Post	SE 1/4 of SW 1/4 Lat 6				57		
Charles M. Niles		7.50' of S. 810' of Lat 5 NE 1/4 of SE 1/4				2.03		
Kenneth, Augusta + Ethel Stidfell		S. 264' of 7.414.2' of Lat 5 NW 1/4 of SE 1/4				10.72		
John A. McKay		7.66' of S. 942' of Lat 5 SW 1/4 of SE 1/4				2.68		
Dr C. M. Niles		7.100' of S. 760' of Lat 5 SE 1/4 of SE 1/4				4.06		

Continued on next page

26620

has been made. Apparently the assessor put it on wrong description. Believe it should also be corrected on tax receipt.

Will appreciate your kindness.

Personal regards
G. Gieske

all

SOLD FOR TAXES	VALUATIONS BY SCHOOL DISTRICTS AS EQUALIZED BY DEPARTMENT OF TAXATION						Tax including State Homestead	State Tax on Non-Homestead	SPECIAL TAXES	TOTAL TAXES	PAID	WHEN PAID	Number of Receipt	March Settlement 1948	June Settlement 1948	November Settlement 1948	Penalty	Collections to First Monday in January 1949	Penalty	Delinquent on First Monday in January 1949	Total Delinquent Tax and Penalty	REMARKS		
	District No.	District No.	District No.	District No.	District No.	District No.																		
	Rate	Rate	Rate	Rate	Rate	Rate																		
1						868			868	1	1st Half Paid JUN 14 1948										434	8477		
2						2314			2314	2	1st Half Paid JUN 14 1948											1157	81273	
3	See letter attached					5104	66		5138	3	PAID IN FULL JAN 19 1948												19.68 deducted	
4						1446	30		1476	4	PAID IN FULL JAN 19 1948		46 46											
5										5														
6						462	10		472	6													472	8519
7						732	16		748	7	PAID IN FULL APR 27 1948	4773												
8						232	04		236	8	PAID IN FULL JUN 15 1948	7727												
9						2024	42		2066	9	PAID IN FULL MAR -9 1948	3092	20 66											
10										10														
11						5534	116		5650	11	PAID IN FULL JUN 10 1948	7781												
12	SOLD FOR TAXES					1966			1966	12														
13						1638	34		1672	13	PAID IN FULL JUN 7 1948	6939												
14						4320	92		4412	14	PAID IN FULL MAR 17 1948	3526	44 12											
15										15														
16						134	02		136	16	PAID IN FULL JUN 15 1948	7737												
17						1504	32		1536	17	PAID IN FULL JUN 7 1948	6938												
18						1080	22		1102	18	PAID IN FULL MAY 28 1948	6104												
19						1002	22		1024	19	PAID IN FULL JUN 15 1948	7737												
20						30288	528		30816	20														

Coolley Trail
Duck Pass
Oak Park
Beaches
Oak Lawn
Beach
Birkwood
Terrace

Assessment Roll and Tax List of Real Property in the Town of Thunder Lake,

Cass County, Minnesota, for Taxes for the Year 1947.

Form 4 CD - JULY 1945 - CONFORMS TO MINNESOTA

IN WHOSE NAME ASSESSED	TO WHOM TRANSFERRED	DESCRIPTION OF PROPERTY					No. School District	Indicate Homestead Yes or No	Indicate Agricultural Yes or No	TRUE AND FULL VALUATIONS					ASSESSED VALUATIONS					FINAL EQUALIZED VALUE	
		SUBDIVISION	Sec. or Lot	Town or Block	Rng.	Number of Acres of Land				LAND Exclusive of Structures and Improvements	BUILDINGS and Other Structures	MACHINERY Permanently Attached to Real Estate	TOTAL True and Full Value	RURAL		ALL OTHER		MACHINERY Permanently Attached to Real Estate	TOTAL ASSESSED VALUE		Total Assessed Value as Equivalized by the Board of Review
														Acres	100ths	Homestead Up to \$4,000 20%	Over \$4,000 and Non-Homestead 33 1/4%				
Louis C. & Anna C. Henke		1 NE 1/4 of NE 1/4 Lot 1	17	140	26	33	25	47													
"		2 NW 1/4 of NE 1/4 " 2				37	25														
The Opsahl Co.		3 SW 1/4 of NE 1/4				40															
State of Minnesota		4 SE 1/4 of NE 1/4																			
		5																			
Wheeler Lumber, Bridget Supply Co.		6 NE 1/4 of NW 1/4				40															
H. D. & Leona Blaylock Jack Hayward	Arthur Eylan	7 NW 1/4 of NW 1/4				40															
Wheeler Lumber, Bridget Supply Co.		8 SW 1/4 of NW 1/4				40															
"		9 SE 1/4 of NW 1/4				40															
		10																			
The Opsahl Co.		11 NE 1/4 of SW 1/4				40															
"		12 NW 1/4 of SW 1/4				40															
"		13 SW 1/4 of SW 1/4				40															
"		14 SE 1/4 of SW 1/4				40															
		15																			
"		16 NE 1/4 of SE 1/4				40															
"		17 NW 1/4 of SE 1/4				40															
"		18 SW 1/4 of SE 1/4				40															
"		19 SE 1/4 of SE 1/4				40															
		20																			
						540	50														

SOLD FOR TAXES	VALUATIONS BY SCHOOL DISTRICTS AS EQUALIZED BY DEPARTMENT OF TAXATION						Tax including State Homestead	State Tax on Non-Homestead	SPECIAL TAXES	TOTAL TAXES	PAID	WHEN PAID	Number of Receipt	March Settlement 1948	June Settlement 1948	Penalty 1948	November Settlement 1948	Penalty 1948	Collections to First Monday in January 1949	Penalty 1949	Delinquent on First Monday in January 1949	Total Delinquent Tax and Penalty	REMARKS
	District No.	District No.	District No.	District No.	District No.	District No.																	
	Rate	Rate	Rate	Rate	Rate	Rate																	
1						116	22	36	48	2284	1	PAID IN FULL FEB - 6 1948											
2						130	25	06	52	2558	2	PAID IN FULL FEB - 6 1948	872	4842									
3						56	10	80	22	1102	3											1102	
4											4												
5											5												
6						93	17	94	38	1832	6	PAID IN FULL FEB 16 1948	1553	1832									
7						93	17	94	38	1832	7											1832	
8						56	10	80	22	1102	8	PAID IN FULL FEB 16 1948											
9						56	10	80	22	1102	9	PAID IN FULL FEB 16 1948	1553	2204									
10											10												
11						56	10	80	22	1102	11											1102	
12						56	10	80	22	1102	12											1102	
13						65	12	54	26	1280	13											1280	
14						75	14	46	30	1476	14											1476	
15											15												
16						75	14	46	30	1476	16											1476	
17						56	10	80	22	1102	17											1102	
18						75	14	46	30	1476	18											1476	
19						75	14	46	30	1476	19											1476	
20											20												
						1133	218	48	454	22302													
								218	46	462													

Dock Pass
Oak Park
Beaches
Oak Lawn
Beach
Terrace
Birchwood

Assessment Roll and Tax List of Real Property in the Town of Thunder Lake

Form 4 CD - MILLER-DAVIS COMPANY, MINNEAPOLIS

IN WHOSE NAME ASSESSED	TO WHOM TRANSFERRED	DESCRIPTION OF PROPERTY				No. School District	Indicate Homestead Yes or No	Indicate Agricultural Yes or No	TRUE AND FULL VALUATIONS					ASSESSED VALUATIONS					Total Assessed Value as Equivalized by the Board of Review	FINAL EQUALIZED VALUE	
		SUBDIVISION	Sec. or Lot	Town or Block	Rng.				Number of Acres of Land	LAND Exclusive of Structures and Improvements	BUILDINGS and Other Structures	MACHINERY Permanently Attached to Real Estate	TOTAL True and Full Value	RURAL		ALL OTHER		MACHINERY Permanently Attached to Real Estate			TOTAL ASSESSED VALUE
														Homestead	Over \$4,000 and Non-Homestead	Homestead	Over \$4,000 and Non-Homestead				
														Up to \$4,000 20%	33 1/3%	Up to \$4,000 25%	40%				
Acres		100ths		Dollars	Dollars	Dollars	Dollars	Dollars	Dollars	Dollars	Dollars	Dollars	Dollars	Dollars	Dollars						
Henry Johnson		1	NE 1/4 of NE 1/4	18	140	26	40	27													
"		2	NW 1/4 of NE 1/4				40														
Walter, Katherine, Andrews, Harold & Mabel Myers	Cohasset Mill & Lumber Co.	3	SW 1/4 of NE 1/4				40														
		4	SE 1/4 of NE 1/4				40														
		5																			
Chas. A. Cavanaugh		6	NE 1/4 of NW 1/4				40														
William Moran	Edward J. Hiesbrack of Reg of Deeds	7	NW 1/4 of NW 1/4 Lot 1				35	47													
		8	SW 1/4 of NW 1/4 " 2				36	02													
Chas. A. Cavanaugh		9	SE 1/4 of NW 1/4				40														
		10																			
Frank J. Hannahan		11	NE 1/4 of SW 1/4				40														
State of Minnesota		12	NW 1/4 of SW 1/4 Lot 3																		
State of Minnesota		13	SW 1/4 of SW 1/4 " 4																		
Frank J. Hannahan		14	SE 1/4 of SW 1/4				40														
Walter, Katherine, Andrews, Harold & Mabel Myers	Cohasset Mill & Lumber Co.	15																			
		16	NE 1/4 of SE 1/4				40														
State of Minnesota		17	NW 1/4 of SE 1/4																		
Walter, Katherine, Andrews, Harold & Mabel Myers	Cohasset Mill & Lumber Co.	18	SW 1/4 of SE 1/4				40														
		19	SE 1/4 of SE 1/4				40														
		20																			
							511	49													

Cass County, Minnesota, for Taxes for the Year 1947.

SOLD FOR TAXES	VALUATIONS BY SCHOOL DISTRICTS AS EQUALIZED BY DEPARTMENT OF TAXATION						Tax including State Homestead	State Tax on Non-Homestead	SPECIAL TAXES	TOTAL TAXES	PAID	WHEN PAID	Number of Receipt	March Settlement 1948	June Settlement 1948	Penalty	November Settlement 1948	Penalty	Collections to First Monday in January 1949	Penalty	Delinquent on First Monday in January 1949	Total Delinquent Tax and Penalty	REMARKS
	District No.	District No.	District No.	District No.	District No.	District No.																	
	Rate	Rate	Rate	Rate	Rate	Rate																	
	Mills	Mills	Mills	Mills	Mills	Mills																	
Dollars	Dollars	Dollars	Dollars	Dollars	Dollars	\$ cts.	\$ cts.	\$ cts.	\$ cts.	\$ cts.	Month Day Year	\$ cts.	\$ cts.	\$ cts.	\$ cts.	\$ cts.	\$ cts.	\$ cts.	\$ cts.	\$ cts.	\$ cts.		
1						84	16	20	34	16	54	1	PAID IN FULL	SEP 1 - 1948									
2						84	16	20	34	16	54	2	PAID IN FULL	SEP 1 - 1948	11322							4962 124	
3						84	16	20	34	16	54	3	PAID IN FULL	SEP 1 - 1948									
4						84	16	20	34	16	54	4	PAID IN FULL	MAY - 6 1948	4918							1654	
5												5											
6						92	17	74	38	18	12	6	PAID IN FULL	JUN 10 1948	7782							1812	
7						74	14	26	30	14	56	7	PAID IN FULL	AUG - 2 1948									
8						75	14	46	30	14	76	8	PAID IN FULL	AUG - 2 1948	1024							2932 159	
9						84	16	20	34	16	54	9	PAID IN FULL	JUN 10 1948	7782							1654	
10												10											
11	SOLD FOR TAXES					84	16	20	34	16	54	11										1654	
12												12											
13												13											
14	SOLD FOR TAXES					84	16	20	34	16	54	14										1654	
15												15											
16						84	16	20	34	16	54	16	PAID IN FULL	MAY - 6 1948	4918							1654	
17												17											
18						84	16	20	34	16	54	18	PAID IN FULL	MAY - 6 1948									
19						84	16	20	34	16	54	19	PAID IN FULL	MAY - 6 1948	4918							3308	
20												20											
						1081	20	846	438	21	284												

Cass County, Minnesota, for Taxes for the Year 1947. (Vertical text on the right edge of the page)

Assessment Roll and Tax List of Real Property in the Town of Thunder Lake

Form 4 CD - MILLER-DAY COMPANY, MINNEAPOLIS

Table with columns: IN WHOSE NAME ASSESSED, TO WHOM TRANSFERRED, DESCRIPTION OF PROPERTY, TRUE AND FULL VALUATIONS, ASSESSED VALUATIONS, FINAL EQUALIZED VALUE. Includes handwritten entries for Carl E. Peterson, John + Ada Soreen, etc.

Continued on next page.

20283

Cass County, Minnesota, for Taxes for the Year 1947.

Table with columns: SOLD FOR TAXES, VALUATIONS BY SCHOOL DISTRICTS AS EQUALIZED BY DEPARTMENT OF TAXATION, Tax including State Homestead, State Tax on Non-Homestead, SPECIAL TAXES, TOTAL TAXES, PAID, WHEN PAID, Number of Receipt, March Settlement 1948, June Settlement 1948, Penalty, November Settlement 1948, Penalty, Collections to First Monday in January 1949, Penalty, Delinquent on First Monday in January 1949, Total Delinquent Tax and Penalty, REMARKS. Includes handwritten entries for various property lots.

244.58

1270

201 28664

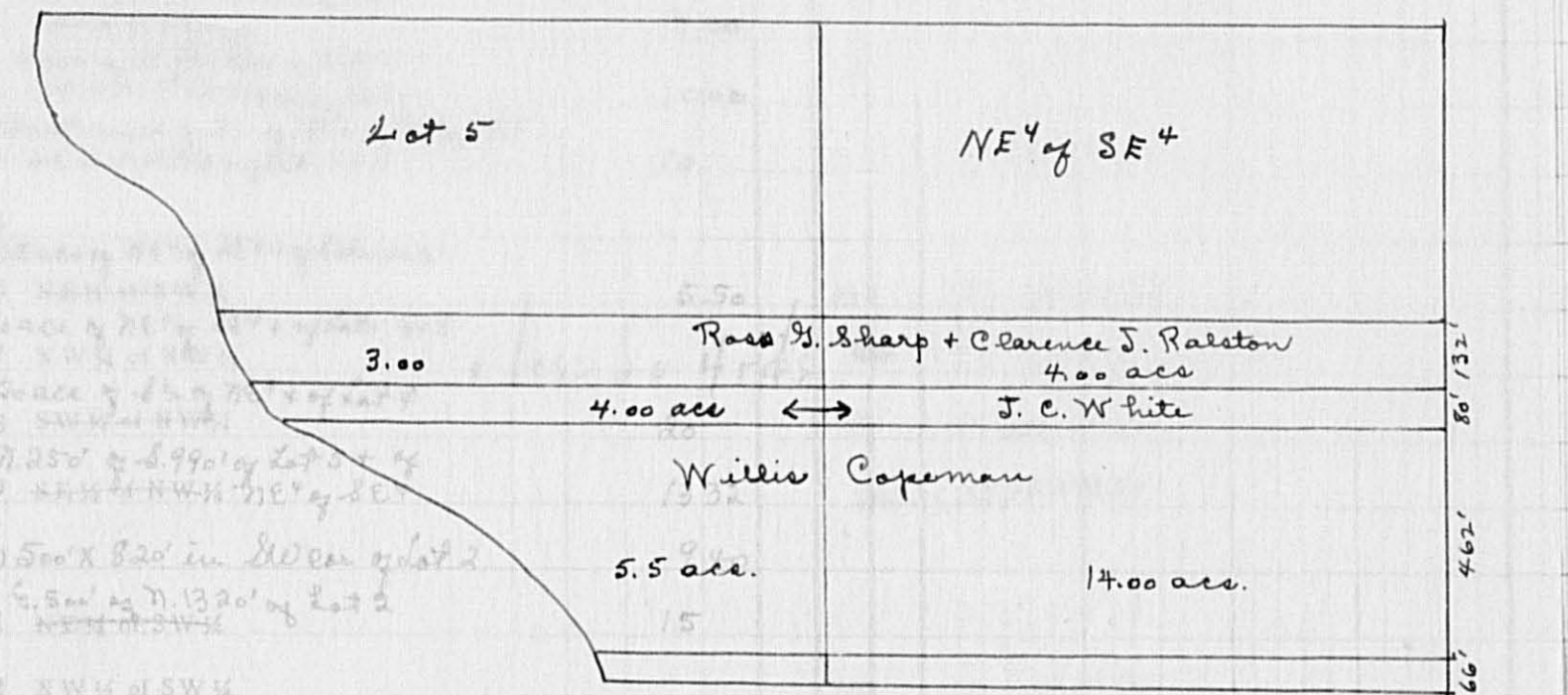
Cooley Trail, Oak Park, Beach, Birchwood Terrace

Assessment Roll and Tax List of Real Property in the Town of Thunder Lake,

Form 4 C.D. MILLER-DAVIS COMPANY, MINNEAPOLIS

IN WHOSE NAME ASSESSED	TO WHOM TRANSFERRED	DESCRIPTION OF PROPERTY	TRUE AND FULL VALUATIONS					ASSESSED VALUATIONS					FINAL EQUALIZED VALUE	
			LAND	BUILDINGS	MACHINERY	TOTAL	RURAL	ALL OTHER		MACHINERY	TOTAL	Total Assessed Value as Equalized by the Board of Review		
								Excess of Homestead	and Other					Permanently Attached to Real Estate
			Dollars	Dollars	Dollars	Dollars	Dollars	Dollars	Dollars	Dollars	Dollars	Dollars	Dollars	Dollars

1947 Tax List Sec. 27-140-26



Rose G. Sharp + Clarence J. Ralston
 W. L. McMullen + Louise A. McMullen
 Percy + Katherine Boas
 Colmer + Walrath
 State of Minnesota
 Agnar C. Knudson
 Andrew + Lillian A. Danielson
 Ernest B. Swanson
 S. O. Severson
 Willis Copeman
 J. C. White
 Walter H. Martenson
 Willis + Alta H. Copeman

14 SE 1/4 of SW 1/4
 15 N. 80' of S. 608' of NE 1/4 of SE 1/4 of Lot 5
 16 NE 1/4 of SE 1/4
 17 NW 1/4 of SE 1/4
 18 SW 1/4 of SE 1/4
 19 SE 1/4 of SE 1/4

200 added

128.72

Cass County, Minnesota, for Taxes for the Year 1947.

SOLD FOR TAXES	VALUATIONS BY SCHOOL DISTRICTS AS EQUALIZED BY DEPARTMENT OF TAXATION						Tax including State Homestead	State Tax on Non-Homestead	SPECIAL TAXES	TOTAL TAXES	PAID	WHEN PAID	Number of Receipt	March Settlement 1948	June Settlement 1948	Penalty	November Settlement 1948	Penalty	Collections to First Monday in January 1949	Penalty	Delinquent on First Monday in January 1949	Total Delinquent Tax and Penalty	REMARKS
	District No.	District No.	District No.	District No.	District No.	District No.																	
	Rate	Rate	Rate	Rate	Rate	Rate																	
	Dollars	Dollars	Dollars	Dollars	Dollars	Dollars	\$ cts.	\$ cts.	\$ cts.	\$ cts.	Month Day Year		\$ cts.	\$ cts.	\$ cts.	\$ cts.	\$ cts.	\$ cts.	\$ cts.	\$ cts.	\$ cts.	\$ cts.	
1							270	06	276	PAID IN FULL	MAY 18 1948												
2							174	04	178	2 PAID IN FULL	MAY 18 1948												
3							1388	30	1418	3 PAID IN FULL	MAY 28 1948	6105		1418									
4							674	14	688	4 PAID IN FULL	FEB 9 1948	1248	688										
5										5													
6							810		810	6 PAID IN FULL	MAY 18 1948	5191		810									
7										7													
8							2024	42	2066	8 2nd Half Paid	OCT 30 1948	42713		1032		1033							
9							886	18	904	9 1st Half Paid	JUN 15 1948	7733		904									
10							636	14	650	10 PAID IN FULL	MAY 28 1948	6103		325		325							
11							1002	22	1024	11 2nd Half Paid	JUN 25 1948	10288		374		374							
12										12													
13							2430	52	2482	13 Balance Paid	AUG 25 1948	11283											
14							618	14	632	14 1st Half Paid	JUN 23 1948	7926		3114									
15							348	08	356	15 PAID IN FULL	FEB 20 1948	1833	356										
16										16													
17	SOLD FOR TAXES						2536	28	4018	17												4018	
18										18													
19										19													
20										20													
							112.60		155.02														

42
 542
 584

122 2536
 70 1454

132 112.60
 70 39.00
 172 152.50

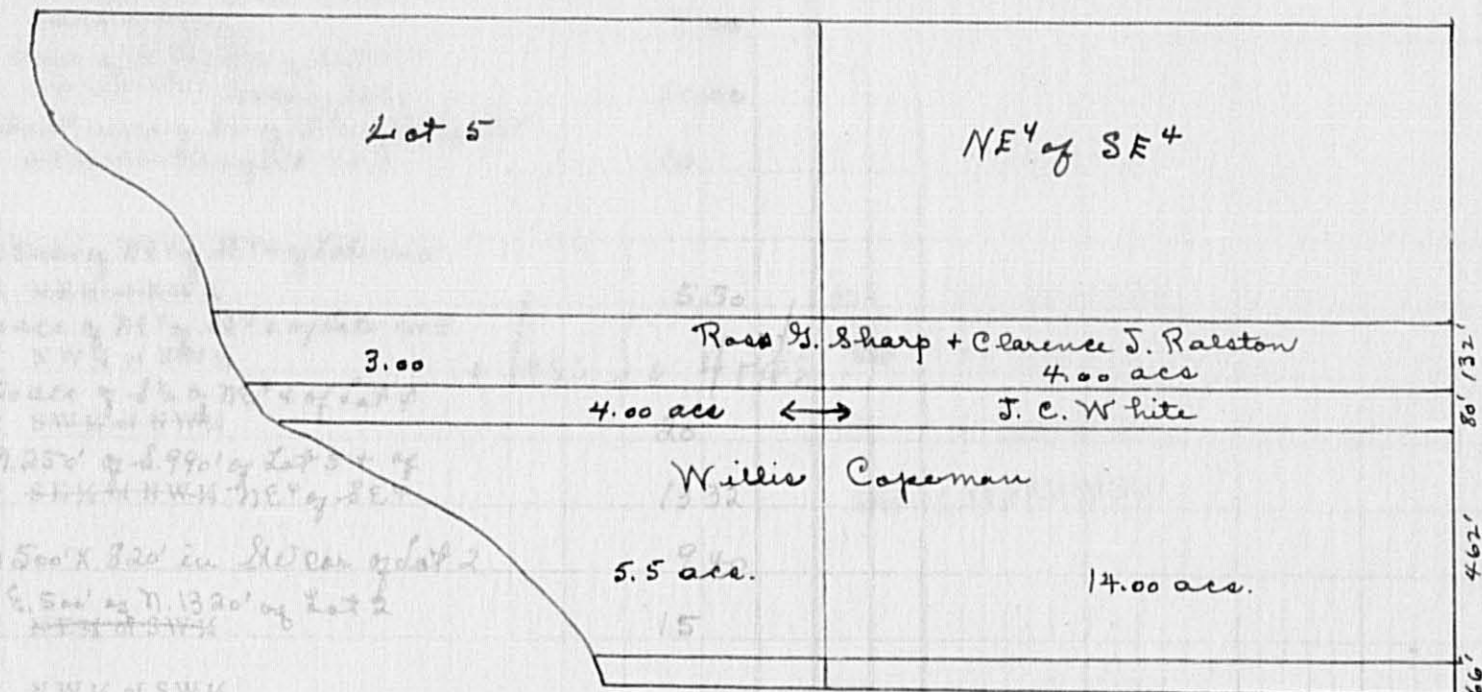
Balance # 3.74

Form 4 CD. MILLER-DAY COMPANY, MINNEAPOLIS

DESCRIPTION OF PROPERTY, TRUE AND FULL VALUATIONS, ASSESSED VALUATIONS

Table with columns: IN WHOSE NAME ASSESSED, TO WHOM TRANSFERRED, RURAL, ALL OTHER, MACHINERY, TOTAL ASSESSED VALUE, Total Assessed Value as Equalized by the Board of Review, FINAL EQUALIZED VALUE.

1947 Tax List Sec. 27-140-26



Handwritten names and descriptions: Rose H. Sharp + Clarence J. Ralston, W. L. McMullen + Louise A. McMullen, Percy + Katherine Boas, Colmer + Wallrath, Agnar C. Knudson, Andrew + Lillian A. Danielson, Ernest B. Swanson, S. O. Severson, Willis Copeman, J. C. White, Walter H. Martenson, Willis + Alta H. Copeman.

Handwritten descriptions of parcels: 14 SE 1/4 of SW 1/4, 15 N. 80' of S. 608' of NE 1/4 of SE 1/4 of Lot 5, 16 NE 1/4 of SE 1/4 - 1/5 acre of Lot 9, 17 NW 1/4 of SE 1/4, 18 SW 1/4 of SE 1/4, 19 SE 1/4 of SE 1/4.

VALUATIONS BY SCHOOL DISTRICTS AS EQUALIZED BY DEPARTMENT OF TAXATION, TAXES

Table with columns: SOLD FOR TAXES, District No., District Rate, District No., District Rate, District No., District Rate, District No., District Rate, District No., District Rate, Tax including State Homestead, State Tax on Non-Homestead, SPECIAL TAXES, TOTAL TAXES, PAID, WHEN PAID, Number of Receipt, March Settlement 1948, June Settlement 1948, Penalty, November Settlement 1948, Penalty, Collections to First Monday in January 1949, Penalty, Delinquent on First Monday in January 1949, Total Delinquent Tax and Penalty, REMARKS.

Vertical text on the right edge: Ootley First Oak Park Beach, Oak Lawn Terrace, Birchwood Terrace.

Assessment

Form 4 CD - MILLER-DAVIS COMPANY, MINNEAPOLIS

IN WHOSE NAME ASSESSED TO WHOM TRANSFERRED

SUBDIVISION

Sec. of Lot

Town or Block

Ring

Number of Acres of Land

100ths

Block No.

Map No.

Map No.

Map No.

Map No.

Map No.

Map No.

Map No.

Map No.

Map No.

Map No.

Map No.

Map No.

Map No.

Map No.

Map No.

Map No.

Map No.

Map No.

Map No.

Map No.

Map No.

Map No.

Map No.

Map No.

Map No.

Map No.

Map No.

Map No.

Map No.

Map No.

Map No.

Map No.

Map No.

Map No.

Map No.

Map No.

Map No.

Map No.

Map No.

Map No.

Map No.

Map No.

Map No.

Map No.

Map No.

Map No.

Map No.

Map No.

Map No.

Map No.

Map No.

Map No.

Map No.

Map No.

Map No.

Map No.

Map No.

Map No.

Map No.

Map No.

Map No.

Map No.

Map No.

Map No.

Map No.

Map No.

Map No.

Map No.

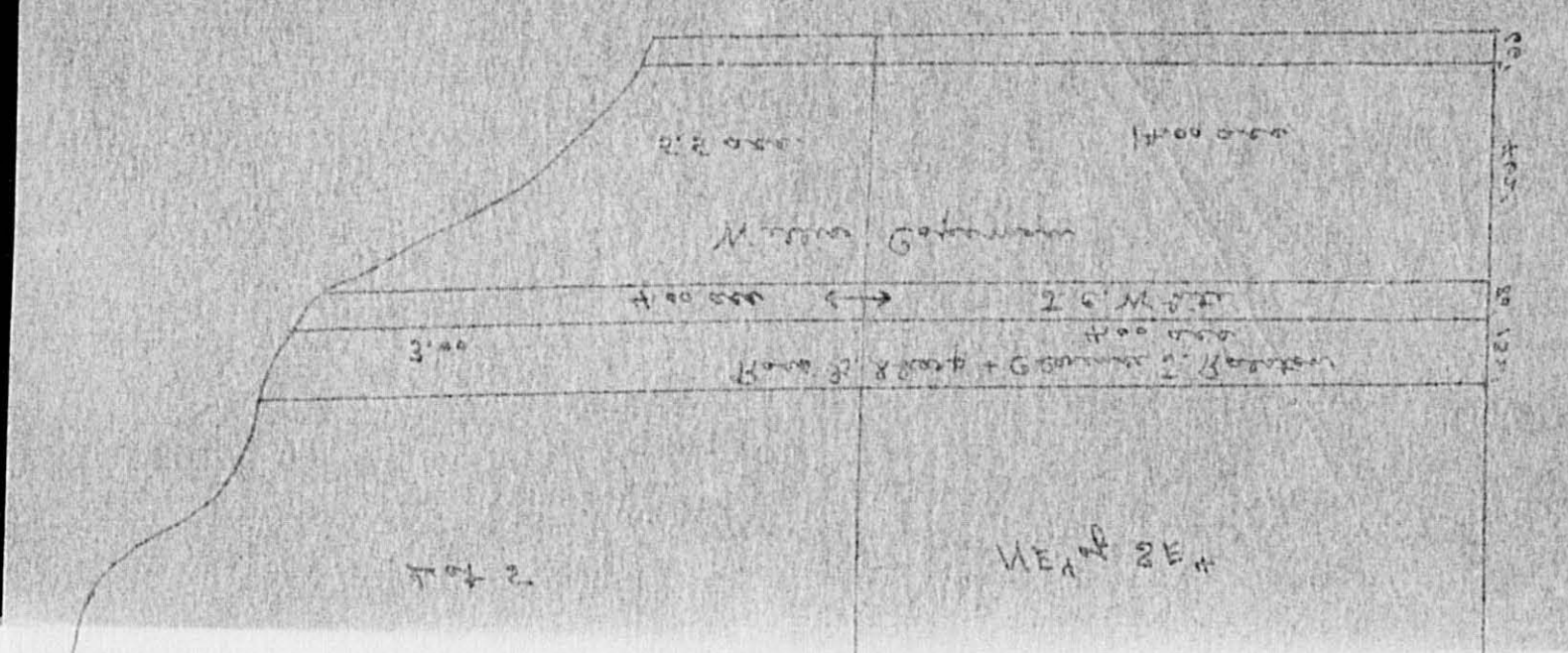
Map No.

Map No.

Map No.

Map No.

Map No.



pro. 51-140-51
1443 Lot 9 1947

Under Lake

ASSESSED VALUATIONS

Table with columns: RURAL, ALL OTHER, MACHINERY, TOTAL ASSESSED VALUE, Total Assessed Value as Equalized by the Board of Review, FINAL EQUALIZED VALUE.

Cass County, Minnesota, for Taxes for the Year 1947.

Table with columns: SOLD FOR TAXES, VALUATIONS BY SCHOOL DISTRICTS AS EQUALIZED BY DEPARTMENT OF TAXATION, Tax including State Homestead, State Tax on Non-Homestead, SPECIAL TAXES, TOTAL TAXES, PAID, WHEN PAID, Number of Receipt, March Settlement 1948, June Settlement 1948, November Settlement 1948, Penalty, Collections to First Monday in January 1949, Delinquent on First Monday in January 1949, Total Delinquent Tax and Penalty, REMARKS.

Handwritten names and addresses: Rose L. Sharp + Clarence J. Ralston, E. Lester Thall, W. L. McMullen + Louise A. McMullen, Percy + Katherine Boas, Colmer + Wallroth, Agnar C. Knudson, Andrew + Lillian A. Danielson, Ernest B. Swanson, S. O. Severson, Willis Copeman, J. C. White, Walter H. Martenson, Willis + Alta H. Copeman.

Handwritten descriptions of land parcels: 7.132' of 8740' of Lot 5, 7.132' of 8740' of NE 1/4 of SE 1/4, 4 acc of NE 1/4 of SE 1/4 of Lot 5 + SW 1/4 of NE 1/4 of Lot 4, About 10 acc of 1/2 of NE 1/4 of SE 1/4, 5.5 acc of NE 1/4 of SE 1/4 of Lots 4 + 5, 10 acc of NE 1/4 of SE 1/4 of Lots 4 + 5, 7.250' of 8.990' of Lot 5 + SE 1/4 of NW 1/4 of NE 1/4 of SE 1/4, 500' x 820' in SW cor of Lot 2, 7.462' of 8.528' of Lot 5, 7.462' of 8.528' of NE 1/4 of SE 1/4, 7.80' of 8.608' of NE 1/4 of SE 1/4 of Lot 5, 7.250' of 15 acc of Lot 9, 15 acc of SE 1/4 of SE 1/4, 15 acc of SE 1/4 of SE 1/4.

Assessment Roll and Tax List of Real Property in the Town of Thunder Lake

Form 4 C MILLER-DAVIS COMPANY, MINNEAPOLIS

Coolley Trail Duck Pass

Oak Park Beaches

7

W

IN WHOSE NAME ASSESSED	TO WHOM TRANSFERRED	DESCRIPTION OF PROPERTY				TRUE AND FULL VALUATIONS										FINAL EQUALIZED VALUE		
		Subdivision	Sec. or Lot	Town or Block	Rng.	Number of Acres of Land	LAND Exclusive of Structures and Improvements	BUILDINGS and Other Structures	MACHINERY Permanently Attached to Real Estate	TOTAL True and Full Value	R U R A L		ALL OTHER		MACHINERY Permanently Attached to Real Estate		TOTAL ASSESSED VALUE	Total Assessed Value as Equalized by the Board of Review
											Acres	100ths	Homestead Up to \$4,000 20%	Over \$4,000 and Non-Homestead 33 1/4%				
		Oak Park Beaches																
Shas. Musick			1	1														
State of Minnesota (Cont. Carson J. Musick)			2															
State of Minnesota (" ")			3															
State of Minnesota (" ")			4															
Carson J. Musick			5															
"			6															
"			7															
State of Minnesota (Cont. Carson J. Musick)			8															
State of Minnesota (" ")			9															
Peter A. + Emma Storebo			10															
"			11															
"			12															
"			13															
"			14															
"			15															
"			16															
Wm. H. Greene + Harriett Dophe			17															
Carl W. Taylor			18															
Ernest + Mildred G. Watkins			19															
Herbert E. Erickson			20															

4th

50 added 17

5 lost house added

1/2 of 20

SOLD FOR TAXES	VALUATIONS BY SCHOOL DISTRICTS AS EQUALIZED BY DEPARTMENT OF TAXATION						Tax including State Homestead	State Tax on Non-Homestead	SPECIAL TAXES	TOTAL TAXES	PAID	WHEN PAID	Number of Receipt	March Settlement 1948	June Settlement 1948	Penalty	November Settlement 1948	Penalty	Collections to First Monday in January 1949	Penalty	Delinquent on First Monday in January 1949	Total Delinquent Tax and Penalty	REMARKS
	District No.	District No.	District No.	District No.	District No.	District No.																	
	Rate	Rate	Rate	Rate	Rate	Rate																	
						79.4																	
1						116	124		124	1	PAID IN FULL	JUL 16 1948	10871		124								
2						116	124		124	2	PAID IN FULL	JUL - 6 1948											
3						116	124		124	3	PAID IN FULL	JUL - 6 1948											
4						116	124		124	4	PAID IN FULL	JUL - 6 1948											
5						116	124		124	5	PAID IN FULL	JUL - 6 1948											
6						121	436		436	6	PAID IN FULL	JUL - 6 1948	970		1304								
7						116	124		124	7	PAID IN FULL	JUL - 6 1948											
8						116	124		124	8	PAID IN FULL	JUL - 6 1948											
9						116	124		124	9	PAID IN FULL	JUL - 6 1948											
						10	208	04	212	10	PAID IN FULL	JUN 22 1948											
						10	208	04	212	11	PAID IN FULL	JUN 22 1948	8370		848								
						10	208	04	212	12	PAID IN FULL	JUN 22 1948											
						10	208	04	212	13	PAID IN FULL	JUN 22 1948											
						60	1246	24	1270	14	PAID IN FULL	JUN 22 1948	8370		1694								
						10	208	04	212	15	PAID IN FULL	JUN 22 1948											
						10	208	04	212	16	PAID IN FULL	JUN 22 1948											
						43	894	18	912	17	PAID IN FULL	JUL 1 1948	9246		912								
						40	832	16	848	18	PAID IN FULL	JUN 10 1948	7771		848								
						62	1288	26	1314	19	PAID IN FULL	JUN 7 1948	6941										
						7	146	02	148	20	PAID IN FULL	JUN 7 1948			1462								
						69	7082	110	7192														
						275																	
						341																	

Oak Lawn Birchwood Beach Terrace

PERSONAL

