

Assessment & Tax List - 1955
Thunder Lake

TABULAR SCHEDULE OF VALUATIONS,
LEVIED IN THE Town OF Thunder Lake

School District No.	VALUATION BY SCHOOL DISTRICTS				RATE OF STATE TAXES	RATE OF COUNTY TAXES						RATE OF TOWN TAXES										RATE OF SCHOOL TAXES	
	Agric- cultural Lands	Non-Agric- cultural Lands	Personal Property	Total Value of all Property except Money and Credits		Rev.	R. & B.	Wel- fare	Bonds and Int.	<i>Court Home Relly</i>	Total Rate of County Tax	Rev.	R. & B.	Drag Tax	State Loan	<i>Fire</i>	Total Rate of Town Tax	Local	Spe- cial	State Loan	Defi- ciency		Tui- tion
<i>C1</i>	Dollars 32,700	Dollars 9,756	Dollars <i>a 1139</i> 70,520.1	Dollars 48,996	11.	3.98	28.01	14.01	49.83	9.97	2.00	103.82	7.1	11.2	1.	10.	29.3	1.25	27.47	1.08	6.46	1.08	6.46
Assessed Value	Rural 11,127	All Other	Personal Property	Total																			
Non-Homestead	31,529		6340	37869																			
Total	42,656		6340	48,996																			

N. H. $\frac{5.17}{9.15}$

RATES AND TAXES
COUNTY OF CASS, STATE OF MINNESOTA

SCHOOL TAXES	LOCAL 1 MILL AND SPECIAL SCHOOL TAXES BY DISTRICTS										ALL OTHER TAXES		
	Total Rate of Sch'l Tax	Total Rate of all Taxes	Local 1 Mill	Special	State Loan	Def. Janap. C.O.	Total School Taxes	FUNDS	Rate	Amounts			
61.01 86.01	198.11 223.11	3384 1516	84598 75785	92956 41636	3655 1637	21860 9791	206453 130365	State - Non-Homestead State - Homestead		196.00 125.00			
		4900	160383	134592	5292	31651	336818	County Revenue, County Road and Bridge, County Welfare, Bonds and Interest <i>Court Home Relly.</i>		1372.40 686.43 2441.57 4884.9 979.9			
								Town Revenue, Town Road and Bridge, Town Drag, Town State Loan, <i>Fire</i>		347.87 548.75 49.00 489.96			
								School Local 1 Mill, School Special, School State Loan, Deficiency Tuition Transportation <i>C.O.</i>		49.00 1603.83 1345.92 529.2 316.51			
										3368.18			

Total Taxes Real Estate 8862.84
Pers. Prop. 1418.80
Total 10281.64

Total Number of Acres 7416.54
Total Levy, \$ 10,281.64
I, L. C. Peterson, Auditor of said County and State aforesaid, do hereby certify that the foregoing is a true and correct Schedule, showing the valuation of all the taxable property, in the Town of Thunder Lake, in said County, the several rates of Taxation and Totals of the several Tax Funds levied thereon for the year A. D. 1935.
Witness my hand and official seal, this and day of January A. D. 1935
By L. C. Peterson County Auditor.
By Wm. Billen Deputy

SEAL

or Ceased to be Homesteads

HOMESTEADS

Sec. of Lot	Town or Block	Range	Number of Acres of Land
			Acres - 100ths

Real Estate

Cooley Park Duck Pass
Oak Park Beaches
Oak Lawn Beach
Birchwood Terrace
Ray Point

COLLECTIONS OF TAXES OF 1956

Larson

OF *Shanabrook Lake*

CASS COUNTY, MINNESOTA

FUNDS	MARCH SETTLEMENT 1956	JUNE SETTLEMENT 1956	NOV. SETTLEMENT 1956	Amount Collected from Nov. 1955 to First Monday in Jan. 1956	REDUCTIONS	Total Reductions and Collected	BALANCE UNCOLLECTED	ADDITIONS	Total Uncollected to First Monday in January, 1956
State-Non-Homestead	4344	9329	3252	85					
State-Homestead	3727	9639	3676	65					
County Revenue	26226	67858	25447	463					
County Road and Bridge	13778	33831	12228	231					
County Welfare	46656	120684	45220	724					
County Bond and Interest	7335	24146	9058	165					
County House	1873	4844	777	35					
Town Revenue	6648	67196	6450	117					
Town Road and Bridge	10488	24225	10775	185					
Town Drag	936	2422	908	76					
Town State Loan									
Fire	7363	24219	9085	166					
School Local 1 Mill	736	2422	908	16					
School Special	36949	76191	27240	413					
School State Loan									
Deficiency	25720	66530	24956	454					
Tuition									
Transportation	6077	2615	982	18					
C.O.	6049	15645	5869	110					
	203378	504766	187761	5363					

	SCHOOL DISTRICT NO.	LOCAL 1 MILL	SPECIAL	STATE LOAN	Deficiency	Transportation	C. O.	TOTALS
MARCH SETTLEMENT	9-C/ 12-C/	395 541	9866 27083		10841 14877	426 585	255 3499	24078 46587
JUNE SETTLEMENT	Totals 9-C/ 12-C/	936 1797 425	36749 4915 31266		25720 49353 17177	1011 1940 675	6049 11686 4039	70665 109011 53782
NOVEMBER SETTLEMENT	Totals 9-C/ 12-C/	2422 727 187	76181 18183 9057		66530 19980 4976	2615 786 196	15645 4699 1170	163393 44375 15580
NOVEMBER to JANUARY	Totals 9-C/	908 16	27240 413		24956 454	982 18	5869 110	59955 1011
ADDITIONS	Totals	16	413		454	18	110	1011
REDUCTIONS	Totals							

or Ceased to be Homesteads

HOMESTEADS

Sec. or Lot	Town or Block	Range	Number of Acres of Land
			Acres 10/16

Cooley Hill Duck Pass
Oak Park Beaches
Oak Lawn Beach
Birchwood Terrace
Ray Point

Assessment Roll and Tax List of Real Property in the Town of *Shunda Lake*

*Indicate Type of Property: R-Residential, C-Commercial, I-Industrial, U-Utility, F-Farm

IN WHOSE NAME ASSESSED	TO WHOM TRANSFERRED	DESCRIPTION OF PROPERTY				TRUE AND FULL VALUATIONS											FINAL EQUALIZED VALUE
		Subdivision	Sec. of Lot	Town or Block	Range	Number of Acres of Land	LAND	BUILDINGS	MACHINERY	TOTAL	RURAL		ALL OTHER		MACHINERY	TOTAL	
Mrs Hugo Eisenach		105 acs of Lot 2				1.05											
Irvin & Eleanor Becker		1.11 acs of Lot 2				1.11											
State of Minnesota		2.6 acs of Lot 2				2.60											
Irvin C. & Eleanor Becker		3.10 acs of Lot 2				3.10											
Wilhelmina Bluhm		100' x 500' of Lot 2 & 1/4 ac of Lot 3															
Cecil A. Bluhm		1/2 sec 14 & 1/2 sec 51.75 acs				49.90											
"		Lot 2 less 9.11 acs				32.50											
Earl M. Bluhm		1/2 sec 14 & 1/2 sec 51.75 acs				28											
Eleanor B. Bluhm		1/2 sec 14 & 1/2 sec 51.75 acs				14											
Hugh & Hattie Eisenach		51.5 acs of Lots 1 & 3				51.50											
Cecil Bluhm		Lot 5 less 1/2 ac				34.40											
Alva & Ellen Elliot		NW 1/4 of SW 1/4 Lot 6				9											
"		SW 1/4 of SW 1/4 Lot 7				38.48											
Cecil A. Bluhm		SE 1/4 of SW 1/4 to Oak Park				21											
"																	
Cecil A. Bluhm		NE 1/4 of SE 1/4															
"		NW 1/4 of SE 1/4 Lot 4				31											
"		SW 1/4 of SE 1/4															
Opal & Thomas Musick		SE 1/4 of SE 1/4 Lot 10				48.30											
"																	
						331.96											

Duplicate desc now include A to H and J

Cass County, Minnesota, for Taxes for the Year 1955.

SOLD FOR TAXES	VALUATIONS BY SCHOOL DISTRICTS AS EQUALIZED BY DEPARTMENT OF TAXATION						Tax including State Homestead	State Tax on Non-Homestead	SPECIAL TAXES	TOTAL TAXES	PAID	WHEN PAID	Number of Receipt	March Settlement 1955	June Settlement 1955	Penalty	November Settlement 1955	Penalty	Collections to First Monday in January 1957	Penalty	Delinquent on First Monday in January 1957	Total Delinquent Tax and Penalty	REMARKS
	District No.	District No.	District No.	District No.	District No.	District No.																	
1	10						1.18	06		2.04													
2	10						1.18	06		2.04	PAID IN FULL	MAY 31 1956	12640		2.04								2048 224
3																							
4	12						2.38	06		2.44	PAID IN FULL	MAY 31 1956	7390		2.44								
5	24						4.76			4.76													476 Tax should be paid
6	122						24.16			24.16	2nd Half Paid	OCT 31 1956	15955		12.08		12.08						
7	46						9.12			9.12	1st Half Paid	MAY 31 1956	12638		4.56		4.56						
8	95						18.82	50		19.32	PAID IN FULL	MAY 31 1956	12637		19.32								
9	10						1.18	06		2.04	PAID IN FULL	MAY 31 1956	12639		2.04								
10	60						12.88	32		12.20													1220 1342
11	52						12.30			12.30	2nd Half Paid	OCT 31 1956	15950		5.15		5.15						
12	124						55.56	64		56.20	1st Half Paid	MAY 31 1956	12638										5620 6182
13	64						12.68			12.68													1268 1395
14	34						6.74			6.74	1st Half Paid	OCT 31 1956	15955		3.37		3.37						
15																							
16																							
17	36						7.14			7.14	1st Half Paid	MAY 31 1956	12638		3.57		3.57						
18																							
19	76						15.06			15.06	PAID IN FULL	APR 27 1956	5621		15.06								
20	454						55.56	170		186.24													6963 2873 8788

Cooley Trail, Drink Pass, Oak Park Beaches, Oak Lawn Beach, Birchwood Terrace, Ray Point

Assessment Roll and Tax List of Real Property in the Town of Shumaker Lake,
*Indicate Type of Property: R-Residential, C-Commercial, I-Industrial, U-Utility, F-Farm

Cass County, Minnesota, for Taxes for the Year 1955.

IN WHOSE NAME ASSESSED	TO WHOM TRANSFERRED	DESCRIPTION OF PROPERTY				TRUE AND FULL VALUATIONS										FINAL EQUALIZED VALUE	
		SUBDIVISION	Sec. or Lot	Town or Block	Number of Acres of Land	LAND Exclusive of Structures and Improvements	BUILDINGS and Other Structures	MACHINERY Permanently Attached to Real Estate	TOTAL True and Full Value	RURAL		ALL OTHER		MACHINERY Permanently Attached to Real Estate	TOTAL ASSESSED VALUE		Total Assessed Value as Equalized by the Board of Review
										Acres	100th	Homestead Up to \$4,000 20%	Over \$4,000 and Non-Homestead 33 1/3%				
<i>Edward J. Bluhme</i>		<i>Tract H of Lots 2+3 NW 1/4 of NE 1/4</i>															
<i>James U. Morse</i>		<i>Tract G of Lots 2+3 NW 1/4 of NE 1/4</i>															
<i>Emma R. Morse</i>		<i>Tract F of Lots 2+3 SW 1/4 of NE 1/4</i>															
<i>Arthur R. Bluhme</i>		<i>Tract E of Lots 2+3 SE 1/4 of NE 1/4</i>															
<i>Howard C. Bluhme</i>		<i>Tract D of Lots 2+3 SE 1/4 of NE 1/4</i>															
		SE 1/4 of NW 1/4															
		NW 1/4 of NW 1/4															
		SW 1/4 of NW 1/4															
		SE 1/4 of NW 1/4															
		NE 1/4 of SW 1/4															
		NW 1/4 of SW 1/4															
		SW 1/4 of SW 1/4															
		SE 1/4 of SW 1/4															
		NE 1/4 of SE 1/4															
		NW 1/4 of SE 1/4															
		SW 1/4 of SE 1/4															
		SE 1/4 of SE 1/4															

SOLD FOR TAXES	VALUATIONS BY SCHOOL DISTRICTS AS EQUALIZED BY DEPARTMENT OF TAXATION						Tax Including State Homestead	State Tax on Non-Homestead	SPECIAL TAXES	TOTAL TAXES	PAID	WHEN PAID	Number of Receipt	March Settlement 1956	June Settlement 1956	November Settlement 1956	Penalty	Collections to First Monday in January 1957	Penalty	Delinquent on First Monday in January 1957	Total Delinquent Tax and Penalty	REMARKS	
	District No.	District No.	District No.	District No.	District No.	District No.																	
	Rate	Rate	Rate	Rate	Rate	Rate																	
1																							
2																							
3																							
4																							
5																							
6																							
7																							
8																							
9																							
10																							
11																							
12																							
13																							
14																							
15																							
16																							
17																							
18																							
19																							
20																							

Cooley Trail Dick Pass
Oak Park Beaches
Oak Lawn Beach
Birchwood Terrace
Ray Point

Assessment Roll and Tax List of Real Property in the Town of Skander Lake, Minnesota

*Indicate Type of Property: R-Residential, C-Commercial, I-Industrial, U-Utility, F-Farm

Table with columns: IN WHOSE NAME ASSESSED, TO WHOM TRANSFERRED, DESCRIPTION OF PROPERTY, TRUE AND FULL VALUATIONS, ASSESSED VALUATIONS, FINAL EQUALIZED VALUE.

22784

Cass County, Minnesota, for Taxes for the Year 1955.

Table with columns: VALUATIONS BY SCHOOL DISTRICTS AS EQUALIZED BY DEPARTMENT OF TAXATION, TAX INCLUDING STATE HOMESTEAD, STATE TAX ON NON-HOMESTEAD, SPECIAL TAXES, TOTAL TAXES, PAID, WHEN PAID, Number of Receipt, March Settlement 1956, June Settlement 1956, November Settlement 1956, Penalty, Collections to First Monday in January 1957, Delinquent on First Monday in January 1957, Total Delinquent Tax and Penalty, REMARKS.

927

19952 516

20268

9878

10390

Vertical text on the right edge of the page: Jolley Trail Duck Pass, Oak Park Beaches, Oak Lawn Beach, Birchwood Terrace, Ray Point.

Assessment Roll and Tax List of Real Property in the Town of Thunder Lake, Cass County, Minnesota, for Taxes for the Year 1955.

Form SCD (25) MINN. STAT. ANN. § 260.02

Table with columns: IN WHOSE NAME ASSESSED, TO WHOM TRANSFERRED, DESCRIPTION OF PROPERTY, TRUE AND FULL VALUATIONS, ASSESSED VALUATIONS, FINAL EQUALIZED VALUE.

Cass County, Minnesota, for Taxes for the Year 1955.

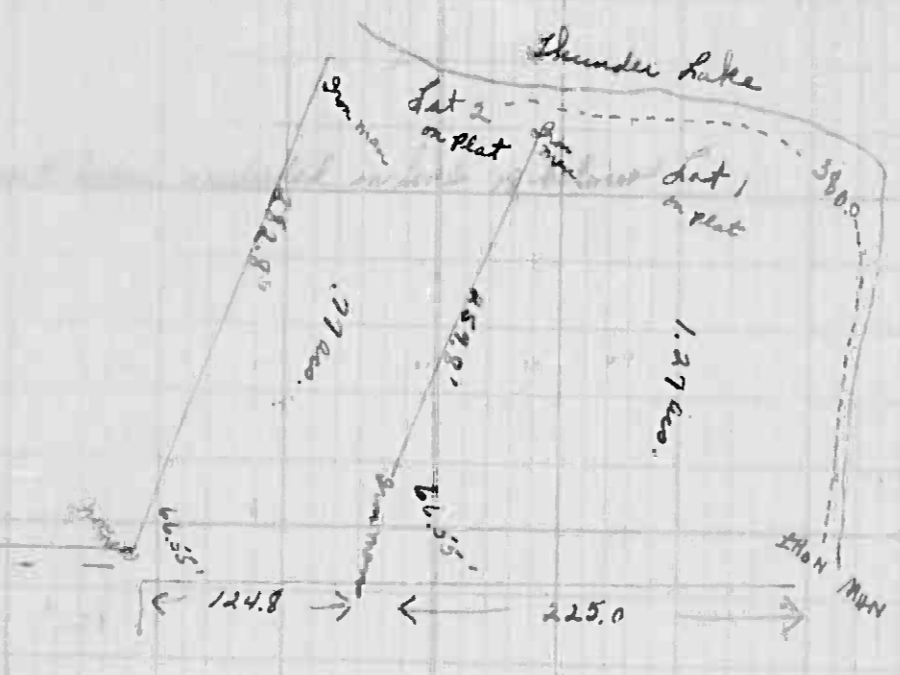
Table with columns: VALUATIONS BY SCHOOL DISTRICTS AS EQUALIZED BY DEPARTMENT OF TAXATION, TAXES, PAID, WHEN PAID, Number of Receipt, March Settlement, June Settlement, November Settlement, Collections to First Monday in January, Delinquent on First Monday in January, Total Delinquent Tax and Penalty, REMARKS.

Assessment Roll and Tax

1916-1917
1916-1917
1916-1917

of Real Property in the County of Cass of the State of Minnesota
Indicate Type of Property: R-Residential, C-Commercial, I-Industrial, U-Utility, F-Farm

IN WHOSE NAME ASSESSED	TO WHOM TRANSFERRED	SUBDIVISION	DEPARTMENT OF REVENUE		TAXABLE VALUE		TOTAL ASSESSED VALUE		TOTAL ASSESSED VALUE	TOTAL ASSESSED VALUE	FINAL EQUALIZED VALUE
			Acres	Mills	Dollars	Dollars	Dollars	Dollars			
George A. Steiner & Laurence M. Steiner		NE 1/4 of NE 1/4	9.14	25.52	232.00	232.00	232.00	232.00	232.00	232.00	
C. P. Gerber		NW 1/4 of NE 1/4									
Robert A. & Lillian G. Milroy		SE 1/4 of NE 1/4									
F. & Alice C. Charland		SW 1/4 of NE 1/4									
Gerald W. & Nancy L. & Otto H. & Ethel M. Cop		NE 1/4 of NW 1/4									
Michael J. & Heloise M. Grandt		NW 1/4 of NW 1/4									
Charles O. & Della M. Sherwood		SE 1/4 of NW 1/4									
Ralph H. & Hazel V. Nordgren		NE 1/4 of SW 1/4									
Louise C. & Anna C. Henke		SW 1/4 of SW 1/4									
Geo. Albert, Melvin Parrish & Vernon Sinclair		SW 1/4 of SW 1/4									
Roy Henderson & Roy Waller		SW 1/4 of SW 1/4									
Wm. S. & Mary C. Wagner		SW 1/4 of SW 1/4									
Louise A. Bates		SW 1/4 of SW 1/4									
H. L. & Emma J. Minor		SW 1/4 of SW 1/4									
Wm. A. Chamberlain 1/2 int.		SW 1/4 of SW 1/4									
W. D. & Edythe Chamberlain 1/2 int.		SW 1/4 of SW 1/4									
Ralph H. & Hazel V. Nordgren		SW 1/4 of SW 1/4									
Roy B. Jones		SW 1/4 of SW 1/4									



Cass County, Minnesota, for Taxes for the Year 1955.

SOLD FOR TAXES	VALUATIONS BY SCHOOL DISTRICTS AS EQUALIZED BY DEPARTMENT OF TAXATION						Tax including State Homestead	State Tax on Non-Homestead	SPECIAL TAXES	TOTAL TAXES	PAID	WHEN PAID	Number of Receipt	March Settlement 1956	June Settlement 1956	November Settlement 1956	Collections to First Monday in January 1957	Delinquent on First Monday in January 1957	Total Delinquent Tax and Penalty	REMARKS	
	District No.	Rate	District No.	Rate	District No.	Rate															
1							495.28	12.92		508.20	1	2nd Half Paid OCT 24 1956 1st Half Paid MAY 31 1956	15311		254.10		254.10				
2											2										
3											3										
4											4										
5											5										
6							18.62	48		19.10	6	PAID IN FULL MAY 31 1956	12646		19.10						
7											7										
8											8										
9											9										
10							19.62	52		20.14	10	2nd Half Paid OCT 31 1956 1st Half Paid MAY 31 1956	13454		10.07		10.07				
11											11										
12											12										
13							24.76	64		25.40	13	PAID IN FULL MAY 31 1956	13455		25.40						
14							13.28	34		13.62	14										13.62 x 14.98
15							19.82	52		20.34	15	PAID IN FULL MAY 31 1956	12649		20.34						
16							21.00	54		21.54	16	PAID IN FULL MAY 31 1956	13647		21.54						
17							21.80	56		22.36	17	2nd Half Paid SEP 1 1956 1st Half Paid MAY 31 1956	13962		11.18		11.18				
18							45.56	118		46.74	18	PAID IN FULL FEB 17 1956	207	46.74							
19							3.96	10		4.06	19	PAID IN FULL MAY 31 1956	12648		4.06						
20							8.698	158		8.826	20										88.56 x 974
							770.68	1938		790.06				46.74	36.579		270.35				102.18
							20														
							132														
							307														
							132														
							375.8														
							3890														

Cooley Trail Duck Pass
Oak Park Ranches
Oak Lawn Beach
Birchwood Terrace
Ray Point

Assessment Roll and Tax List of Real Property in the Town of Thunder Lake, Minn.

Table with columns: IN WHOSE NAME ASSESSED, TO WHOM TRANSFERRED, DESCRIPTION OF PROPERTY, TRUE AND FULL VALUATIONS (LAND, BUILDINGS, MACHINERY, TOTAL), ASSESSED VALUATIONS (RURAL, ALL OTHER, MACHINERY, TOTAL), and FINAL EQUALIZED VALUE.

Cass County, Minnesota, for Taxes for the Year 1955.

Table with columns: SOLD FOR TAXES, VALUATIONS BY SCHOOL DISTRICTS AS EQUALIZED BY DEPARTMENT OF TAXATION, Tax Including State Homestead, State Tax on Non-Homestead, SPECIAL TAXES, TOTAL TAXES, PAID, WHEN PAID, Number of Receipt, March Settlement 1956, June Settlement 1956, November Settlement 1956, Collections to First Monday in January 1957, Delinquent on First Monday in January 1957, Total Delinquent Tax and Penalty, REMARKS.

Assessment Roll and Tax List of Real Property in the Town of Thunder Lake, Cass County, Minnesota, for Taxes for the Year 1955.

Table with columns: IN WHOSE NAME ASSESSED, TO WHOM TRANSFERRED, DESCRIPTION OF PROPERTY, TRUE AND FULL VALUATIONS, ASSESSED VALUATIONS, VALUATIONS BY SCHOOL DISTRICTS AS EQUALIZED BY DEPARTMENT OF TAXATION, SOLD FOR TAXES, PAID, WHEN PAID, Number of Receipt, March Settlement 1956, June Settlement 1956, November Settlement 1956, Collections to First Monday in January 1957, Delinquent on First Monday in January 1957, Total Delinquent Tax and Penalty, REMARKS.

That part of Lot 3 Sec. 10-140-26 Des. as Follows; starting at a pt. on the E. shore of Big Thunder Lake where Hy#6 leaves said Lake, going in NW'ly direction, thence along the lake shore in a NW'ly direction, a distance of 100', thence N. Parallel with the W. line of said lot 3, to said Hy#6, thence SE'ly along said Hy. #6 to beginning.

That part of lot 3 Sec. 10-140-26 described as follows Beg. on the lake shore of Big Thunder Lake 100' NW of the pt. where Rt. Wy of new Hy#6 leaves the lake as pt. of begin. thence NW'ly along shore of said Big Thunder Lake to the W. line of said Lot 3, approx. 170'; thence N. along the W. line of said lot 3 to Rt. Wy. of Hy #6 thence S. and SE'ly along W. side of said Hy#6 to the NW cor. of Theodore Hanson tract; thence S'ly along W side of Theo. Hanson tract to pt. of beginning.

Emmett & Mary Kruse

Coolley Trail Duck Pass, Oak Park Beaches, Oak Lawn Beach, Birchwood Terrace, Ray Point

Assessment Roll and Tax List of Real Property in the *Town* of *Thunder Lake*, *Indicate Type of Property: R-Residential, C-Commercial, I-Industrial, U-Utility, F-Farm

Cass County, Minnesota, for Taxes for the Year 1955.

IN WHOSE NAME ASSESSED	TO WHOM TRANSFERRED	DESCRIPTION OF PROPERTY				No. School District	Indicate Homestead Tax or No	Indicate Agricultural Tax or No	Indicate Type of Property	TRUE AND FULL VALUATIONS			ASSESSED VALUATIONS					Total Assessed Value as Equalized by the Board of Review	FINAL EQUALIZED VALUE					
		SUBDIVISION	Sec. or Lot	Town or Block	Range					Number of Acres of Land Acres 100ths	LAND Exclusive of Structures and Improvements	BUILDINGS and Other Structures	MACHINERY Permanently Attached to Real Estate	TOTAL True and Full Value	RURAL		ALL OTHER			MACHINERY Permanently Attached to Real Estate	TOTAL ASSESSED VALUE			
State of Minnesota		NE 1/4 of NE 1/4																						
						2.1																		
		NW 1/4 of NE 1/4																						
		SW 1/4 of NE 1/4																						
		SE 1/4 of NE 1/4																						
		NE 1/4 of NW 1/4																						
		NW 1/4 of NW 1/4																						
		SW 1/4 of NW 1/4																						
		SE 1/4 of NW 1/4																						
		NE 1/4 of SW 1/4																						
	Edward Tontant	NW 1/4 of SW 1/4																						
	" "	SW 1/4 of SW 1/4																						
	State of Minnesota	SE 1/4 of SW 1/4																						
	Arthur & Dolores Corlan	NE 1/4 of SE 1/4																						
	State of Minnesota	NW 1/4 of SE 1/4																						
	State of Minnesota	SW 1/4 of SE 1/4																						
	Arthur & Dolores Corlan	SE 1/4 of SE 1/4																						

SOLD FOR TAXES	VALUATIONS BY SCHOOL DISTRICTS AS EQUALIZED BY DEPARTMENT OF TAXATION						State Tax on Non-Homestead	SPECIAL TAXES	TOTAL TAXES	PAID	WHEN PAID	Number of Receipts	March Settlement 1956	June Settlement 1956	Penalty	November Settlement 1956	Penalty	Collections to First Monday in January 1957	Penalty	Delinquent on First Monday in January 1957	Total Delinquent Tax and Penalty	REMARKS	
	District No.	Rate	District No.	Rate	District No.	Rate																	Including State Homestead

Cooley Trail
Dunk Pass
Oak Park Benches
Oak Farm Beach
Birchwood Terrace
Ray Point

Assessment Roll and Tax List of Real Property in the Town of Skunden Lake, Cass County, Minnesota, for Taxes for the Year 1955. *Indicate Type of Property: R-Residential, C-Commercial, I-Industrial, U-Utility, F-Farm

Cass County, Minnesota, for Taxes for the Year 1955.

Table with columns: IN WHOSE NAME ASSESSED, TO WHOM TRANSFERRED, SUBDIVISION, ACRES, 100ths, No. School District, Indicate Homestead Yes or No, Indicate Agricultural Yes or No, Indicate Type of Property, TRUE AND FULL VALUATIONS (LAND, BUILDINGS, MACHINERY, TOTAL Tree and Full Value), ASSESSED VALUATIONS (RURAL, ALL OTHER, MACHINERY, TOTAL ASSESSED VALUE), Total Assessed Value as Equalized by the Board of Review, FINAL EQUALIZED VALUE.

Table with columns: SOLD FOR TAXES, VALUATIONS BY SCHOOL DISTRICTS AS EQUALIZED BY DEPARTMENT OF TAXATION (District No., Rate, etc.), Tax Including State Homestead, State Tax on Non-Homestead, SPECIAL TAXES, TOTAL TAXES, PAID, WHEN PAID, Number of Receipt, March Settlement, June Settlement, November Settlement, Collections in First Monday in January 1957, Delinquent on First Monday in January 1957, Total Delinquent Tax and Penalty, REMARKS.

State of Minnesota
State of Minnesota
State of Minnesota
State of Minnesota
Beatrice Sieffert State of Minnesota
State of Minnesota
State of Minnesota
State of Minnesota
State of Minnesota
State of Minnesota
State of Minnesota
State of Minnesota
State of Minnesota
State of Minnesota
State of Minnesota
State of Minnesota
State of Minnesota

SOLD FOR TAXES
80
1584
42
1626
6 Forfeited 10-1-56
7 Forfeited 10-1-56

16.26
16.26

Cooley Trail, Duck Pass, Oak Park Beaches, Oak Lawn Beach, Birchwood Terrace, Ray Point

Assessment Roll and Tax List of Real Property in the Town of Thunder Lake,
 *Indicate Type of Property: R-Residential, C-Commercial, I-Industrial, U-Utility, F-Farm

IN WHOSE NAME ASSESSED	TO WHOM TRANSFERRED	DESCRIPTION OF PROPERTY				TRUE AND FULL VALUATIONS				ASSESSED VALUATIONS						FINAL EQUALIZED VALUE					
		SUBDIVISION	Sec. or Lot	Town or Block	Range	Number of Acres of Land	LAND Exclusive of Structures and Improvements	BUILDINGS and Other Structures	MACHINERY Permanently Attached to Real Estate	TOTAL True and Full Value	RURAL			ALL OTHER			Total Assessed Value as Equalized by the Board of Review				
											Homestead Up to \$4,000 20%	Over \$4,000 and Non-Homestead 33 1/3%	Homestead Up to \$4,000 25%	Over \$4,000 and Non-Homestead 40%	MACHINERY Permanently Attached to Real Estate 33 1/3%			TOTAL ASSESSED VALUE			
<i>Gottfred & Martha Siefert</i>	State of Minnesota	NE 1/4 of NE 1/4	14	N40 26	40	Com	No	yes													
State of Minnesota		NW 1/4 of NE 1/4																			
State of Minnesota		SW 1/4 of NE 1/4																			
State of Minnesota		SE 1/4 of NE 1/4																			
State of Minnesota		NE 1/4 of NW 1/4																			
State of Minnesota		NW 1/4 of NW 1/4																			
<i>Frank X. Henke</i>		SW 1/4 of NW 1/4			40		No	"													
"		SE 1/4 of NW 1/4			40		"	"													
<i>Jena Mining Co.</i>	State of Minnesota	NE 1/4 of SW 1/4			40		"	"													
State of Minnesota		NW 1/4 of SW 1/4																			
State of Minnesota		SW 1/4 of SW 1/4																			
<i>Jena Mining Co.</i>		SE 1/4 of SW 1/4			40		"	"													
State of Minnesota		NE 1/4 of SE 1/4																			
<i>Jena Mining Co.</i>		NW 1/4 of SE 1/4			40		"	"													
		SW 1/4 of SE 1/4			40		"	"													
State of Minnesota		SE 1/4 of SE 1/4																			

240

Cass County, Minnesota, for Taxes for the Year 1955.

SOLD FOR TAXES	VALUATIONS BY SCHOOL DISTRICTS AS EQUALIZED BY DEPARTMENT OF TAXATION						Tax Including State Homestead	State Tax on Non-Homestead	SPECIAL TAXES	TOTAL TAXES	PAID	WHEN PAID	Number of Receipt	March Settlement 1956	June Settlement 1956	November Settlement 1956	Penalty	Collections to First Monday in January 1957	Penalty	Delinquent on First Monday in January 1957	Total Delinquent Tax and Penalty	REMARKS	
	District No.	District No.	District No.	District No.	District No.	District No.																	
	Rate	Rate	Rate	Rate	Rate	Rate																	
	Rate	Rate	Rate	Rate	Rate	Rate																	
1						287	5686	148	5834		1	Forfeited										58.34 land	
2											2												
3											3												
4											4												
5											5												
6											6												
7											7												
8											8		110	2180	56	2236	8						
9											9		100	1982	52	2034	9						
10											10												
11											11		107	2120	56	2176	11						
12											12												
13											13												
14											14		107	2120	56	2176	14						
15											15												
16											16												
17											17		107	2120	56	2176	17						
18											18		104	2060	54	2114	18						
19											19												
20											20												
													922	18268	498	18766							
																							58.94 land

Cooly Hill Duck Ponds
 Oak Park Beaches
 Oak Lawn Beach
 Birchwood Terrace
 Ray Point

Assessment Roll and Tax List of Real Property in the Town of Thunder Lake, Cass County, Minnesota, for Taxes for the Year 1955.

Table with columns: IN WHOSE NAME ASSESSED, TO WHOM TRANSFERRED, DESCRIPTION OF PROPERTY, TRUE AND FULL VALUATIONS (RURAL, ALL OTHER, MACHINERY), VALUATIONS BY SCHOOL DISTRICTS AS EQUALIZED BY DEPARTMENT OF TAXATION, SOLD FOR TAXES, PAID, WHEN PAID, SPECIAL TAXES, TOTAL TAXES, MARCH SETTLEMENT 1956, JUNE SETTLEMENT 1956, PENALTY, NOVEMBER SETTLEMENT 1956, PENALTY, COLLECTIONS TO FIRST MONDAY IN JANUARY 1957, PENALTY, DELINQUENT ON FIRST MONDAY IN JANUARY 1957, TOTAL DELINQUENT TAX AND PENALTY, REMARKS.

Assessment Roll and Tax List of Real Property in the Town of Thunder Lake, Cass County, Minnesota, for Taxes for the Year 1955.

Table with columns for 'IN WHOSE NAME ASSESSED', 'TO WHOM TRANSFERRED', 'DESCRIPTION OF PROPERTY', 'TRUE AND FULL VALUATIONS', 'ASSESSED VALUATIONS', and 'FINAL EQUALIZED VALUE'. Includes handwritten entries for Cecil R. & Marion P. Letea and H. Ray Cline.

Cass County, Minnesota, for Taxes for the Year 1955.

Table with columns for 'SOLD FOR TAXES', 'VALUATIONS BY SCHOOL DISTRICTS AS EQUALIZED BY DEPARTMENT OF TAXATION', 'SPECIAL TAXES', 'TOTAL TAXES', 'PAID', 'WHEN PAID', 'Number of Receipt', 'March Settlement', 'June Settlement', 'November Settlement', 'Penalty', 'Collections to First Monday in January 1957', 'Delinquent on First Monday in January 1957', and 'Total Delinquent Tax and Penalty'. Includes handwritten calculations and dates.

Assessment Roll and Tax List of Real Property in the Town of Shanley Lake,
 *Indicate Type of Property: R-Residential, C-Commercial, I-Industrial, U-Utility, F-Farm

IN WHOSE NAME ASSESSED	TO WHOM TRANSFERRED	DESCRIPTION OF PROPERTY				No. School District	Indicate Homestead Yes or No	Indicate Agricultural Yes or No	Indicate Type of Property	TRUE AND FULL VALUATIONS						TOTAL ASSESSED VALUE	Total Assessed Value as Equalized by the Board of Review	FINAL EQUALIZED VALUE		
		SUBDIVISION	Sec. or Lot	Town or Block	Number of Acres of Land					LAND Exclusive of Structures and Improvements	BUILDINGS and Other Structures	MACHINERY Permanently Attached to Real Estate	RURAL		ALL OTHER				MACHINERY Permanently Attached to Real Estate	
													TOTAL True and Full Value	Over \$4,000 Homestead Up to \$1,000 20%	Over \$4,000 and Non-Homestead 33 1/3%					Over \$4,000 Homestead Up to \$1,000 25%
Louis C. + Anna C. Henke		NE 1/4 of NE 1/4	17	140	26	3325	C-1	No	No											
"		NW 1/4 of NE 1/4				3725	"	"	"											
State of Minnesota		SW 1/4 of NE 1/4																		
State of Minnesota		SE 1/4 of NE 1/4																		
Wheeler Lumber Bridge & Supply Co.		NE 1/4 of NW 1/4				40	"	"	"											
Jack Hayward + Arthur Conner		NW 1/4 of NW 1/4				40	"	"	"											
Wheeler Lumber Bridge & Supply Co.		SW 1/4 of NW 1/4				40	"	"	"											
"		SE 1/4 of NW 1/4				40	"	"	"											
State of Minnesota		NE 1/4 of SW 1/4																		
State of Minnesota		NW 1/4 of SW 1/4																		
State of Minnesota		SW 1/4 of SW 1/4																		
The Opsahl Co.		SE 1/4 of SW 1/4				40	"	"	"											
State of Minnesota		NE 1/4 of SE 1/4																		
State of Minnesota		NW 1/4 of SE 1/4																		
The Opsahl Co.		SW 1/4 of SE 1/4				40	"	"	"											
"		SE 1/4 of SE 1/4				40	"	"	"											
						350.50														

Cass County, Minnesota, for Taxes for the Year 1955.

SOLD FOR TAXES	VALUATIONS BY SCHOOL DISTRICTS AS EQUALIZED BY DEPARTMENT OF TAXATION						Tax Including State Homestead	State Tax on Non-Homestead	SPECIAL TAXES	TOTAL TAXES	PAID	WHEN PAID	Number of Receipt	Mar Settlement 1956	June Settlement 1956	November Settlement 1956	Penalty	Collections to First Monday in January 1957	Penalty	Delinquent on First Monday in January 1957	Total Delinquent Tax and Penalty	REMARKS	
	District No.	District No.	District No.	District No.	District No.	District No.																	
	Rate	Rate	Rate	Rate	Rate	Rate																	
1							2180	56	2236	1	PAID IN FULL	MAY 31 1956	7345	4756									
2							2456	64	2520	2	PAID IN FULL	MAY 31 1956											
3										3													
4										4													
5										5													
6							110		2180	56	2236	6	PAID IN FULL	FEB 29 1956	3771	2236							
7	SOLD FOR TAXES						56		1110	28	1138	7	PAID IN FULL	JAN 30 1956	644	1138							
8							110		2180	56	2236	8	PAID IN FULL	FEB 29 1956	3771	2236							
9							110		2180	56	2236	9	PAID IN FULL	FEB 29 1956		2236							
10												10											
11												11											
12												12											
13												13											
14	SOLD FOR TAXES						80		1584	42	1626	14								1626			
15												15											
16												16											
17												17											
18	SOLD FOR TAXES						80		1584	42	1626	18								1626			
19	SOLD FOR TAXES						80		1584	42	1626	19								1626			
20												20											
													860							17038	442		
																				17480			
																					7844	4756	
																						4878	

Coolley Trail Duck Pass
Oak Park Benches
Oak Lawn Beach
Birchwood Terrace
Ray Point

Assessment Roll and Tax List of Real Property in the Town of Thunder Lake,
*Indicate Type of Property: R-Residential, C-Commercial, I-Industrial, U-Utility, F-Farm

Cass County, Minnesota, for Taxes for the Year 1955.

IN WHOSE NAME ASSESSED	TO WHOM TRANSFERRED	DESCRIPTION OF PROPERTY				No. School District	Indicate Homestead Tax No	Indicate Agricultural Tax No	Indicate Type of Property	TRUE AND FULL VALUATIONS				ASSESSED VALUATIONS						FINAL EQUALIZED VALUE				
		SUBDIVISION	Sec. of Lot	Town or Block	Rng					Number of Acres of Land	LAND Exclusive of Structures and Improvements	BUILDINGS and Other Structures	MACHINERY Permanently Attached to Real Estate	TOTAL True and Full Value	RURAL		ALL OTHER		MACHINERY Permanently Attached to Real Estate		TOTAL ASSESSED VALUE	Total Assessed Value as Equipped by the Board of Review		
															Acres	100ths	Homestead	Over \$4,000 and Non-Homestead					Homestead	Over \$4,000 and Non-Homestead
																	20%	33 1/3%					25%	40%
Henry Tobiasson		NE 1/4 of NE 1/4	18	40 26	40			C-1																
"		NW 1/4 of NE 1/4			40			"																
"		SW 1/4 of NE 1/4			40			"																
U. S. of America		SE 1/4 of NE 1/4			40			"																
Chas A. Cavanaugh		NE 1/4 of NW 1/4			40			"																
Meyers & Andrews		NW 1/4 of NW 1/4 Set 1			35 47			"																
"		SW 1/4 of NW 1/4 Set 2			36 02			"																
Chas A. Cavanaugh		SE 1/4 of NW 1/4			40			"																
State of Minnesota		NE 1/4 of SW 1/4						"																
State of Minnesota		NW 1/4 of SW 1/4 Set 3						"																
State of Minnesota		SW 1/4 of SW 1/4 Set 4						"																
State of Minnesota		SE 1/4 of SW 1/4						"																
U. S. of America		NE 1/4 of SE 1/4						"																
State of Minnesota		NW 1/4 of SE 1/4						"																
U. S. of America		SW 1/4 of SE 1/4						"																
U. S. of America		SE 1/4 of SE 1/4						"																
					271 49																			

SOLD FOR TAXES	VALUATIONS BY SCHOOL DISTRICTS AS EQUALIZED BY DEPARTMENT OF TAXATION						Tax on State Homestead	State Tax on Non-Homestead	SPECIAL TAXES	TOTAL TAXES	PAID	WHEN PAID	Number of Receipt	March Settlement 1956	June Settlement 1956	Penalty	November Settlement 1956	Penalty	Collections to First Monday in January 1957	Penalty	Delinquency on First Monday in January 1957	Total Delinquent Tax and Penalty	REMARKS
	District No.	District No.	District No.	District No.	District No.	District No.																	
	Rate	Rate	Rate	Rate	Rate	Rate																	
	Mills	Mills	Mills	Mills	Mills	Mills																	
	\$	\$	\$	\$	\$	\$																	
1																							
2																							
3																							
4																							
5																							
6		184					3646	96	3742	6	PAID IN FULL MAY 31 1956	12680		3742									
7		100					1982	52	2034	7												2034	
8		120					2378	62	2440	8												2440	
9		160					3170	82	3252	9	PAID IN FULL MAY 31 1956	12680		3252									
10										10													
11										11													
12										12													
13										13													
14										14													
15										15													
16										16													
17										17													
18										18													
19										19													
20										20													
					744																		
					14740		388																
					15128																		
					7824		1830																
					4474																		

Colony Trail Duck Pass Oak Park Beach Birchwood Terrace Ray Point

Assessment Roll and Tax List of Real Property in the Town of Thunder Lake, Minnesota

*Indicate Type of Property: R-Residential, C-Commercial, I-Industrial, U-Utility, F-Farm

Table with columns: IN WHOSE NAME ASSESSED, TO WHOM TRANSFERRED, DESCRIPTION OF PROPERTY, TRUE AND FULL VALUATIONS, ASSESSED VALUATIONS, FINAL EQUALIZED VALUE.

Henry K. Pond
Sheriff K. Pond, Raymond L. Lehman
Agnes E. Wesche
Thos. E. Frid

David M. + Mabel L. Felkner
Albert J. + Anne J. Jucker
Clifford H. + Hazel C. Thomas
Franklin J. + Rebecca M. Nelson
Wm. E. + Thos. E. Haines

2375

Cass County, Minnesota, for Taxes for the Year 1955.

Table with columns: VALUATIONS BY SCHOOL DISTRICTS AS EQUALIZED BY DEPARTMENT OF TAXATION, SOLD FOR TAXES, PAID, WHEN PAID, March Settlement 1956, June Settlement 1956, November Settlement 1956, Collections to First Monday in January 1957, Delinquent on First Monday in January 1957, Total Delinquent Tax and Penalty, REMARKS.

714
414
714 = 125
= 414
125 = 539

2788
8200
0988

216

11204

5266

4110

1828

PAID BR# 28796

Coley Trail Duck Pass
Oak Park Benches
Oak Lawn Beach
Birchwood Terrace
Ray Point

Assessment Roll and Tax List of Real Property in the Town of Thunder Lake, Cass County, Minnesota, for Taxes for the Year 1955. *Indicate Type of Property: R-Residential, C-Commercial, I-Industrial, U-Utility, F-Farm

Table with columns: IN WHOSE NAME ASSESSED, TO WHOM TRANSFERRED, DESCRIPTION OF PROPERTY, TRUE AND FULL VALUATIONS, ASSESSED VALUATIONS, FINAL EQUALIZED VALUE. Includes entries for Melvin J. & Velma L. Smith and Robert & Genevieve Crandall.

Cass County, Minnesota, for Taxes for the Year 1955.

Table with columns: VALUATIONS BY SCHOOL DISTRICTS AS EQUALIZED BY DEPARTMENT OF TAXATION, SOLD FOR TAXES, TAXES, SPECIAL TAXES, TOTAL TAXES, WHEN PAID, Number of Settlement, etc. Includes handwritten entries for tax amounts and dates.

Vertical text on the right edge of the page: Cooley Trail, Duck Pass, Oak Park Beaches, Oak Lawn Beach, Birchwood Terrace, Ray Point.

Assessment Roll and Tax List of Real Property in the Town of Thunder Lake, Cass County, Minnesota, for Taxes for the Year 1955.

Table with columns: IN WHOSE NAME ASSESSED, TO WHOM TRANSFERRED, DESCRIPTION OF PROPERTY, TRUE AND FULL VALUATIONS (LAND, BUILDINGS, MACHINERY, TOTAL), ASSESSED VALUATIONS (RURAL, ALL OTHER, MACHINERY, TOTAL ASSESSED), FINAL EQUALIZED VALUE.

Table with columns: VALUATIONS BY SCHOOL DISTRICTS AS EQUALIZED BY DEPARTMENT OF TAXATION, SOLD FOR TAXES, SPECIAL TAXES, TOTAL TAXES, PAID, WHEN PAID, Number of Receipt, March Settlement, June Settlement, Penalty, November Settlement, Penalty, Collections to First Monday in January, Delinquent on First Monday in January, Total Delinquent Tax and Penalty, REMARKS.

Cooley Trail, Duck Pass, Oak Park, Beaches, Oak Lawn Beach, Birchwood Terrace, Ray Point

Assessment Roll and Tax List of Real Property in the Town of Thunder Lake

*Indicate Type of Property: R-Residential, C-Commercial, I-Industrial, U-Utility, F-Farm

Table with columns: IN WHOSE NAME ASSESSED, TO WHOM TRANSFERRED, DESCRIPTION OF PROPERTY, TRUE AND FULL VALUATIONS, ASSESSED VALUATIONS, FINAL EQUALIZED VALUE.

Cass County, Minnesota, for Taxes for the Year 1955.

Table with columns: SOLD FOR TAXES, VALUATIONS BY SCHOOL DISTRICTS AS EQUALIZED BY DEPARTMENT OF TAXATION, Tax including State Homestead, State Tax on Non-Homestead, SPECIAL TAXES, TOTAL TAXES, PAID, WHEN PAID, Number of Receipt, March Settlement 1955, June Settlement 1955, Penalty, November Settlement 1955, Penalty, Collections to First Monday in January 1957, Penalty, Delinquency on First Monday in January 1957, Total Delinquent Tax and Penalty, REMARKS.

Cooley Trail Junk Pass, Oak Park Beaches, Oak Lawn Beach, Birchwood Terrace, Ray Point

Assessment Roll and Tax List of Real Property in the Town of Thunder Lake

*Indicate Type of Property: R-Residential, C-Commercial, I-Industrial, U-Utility, F-Farm

Table with columns: IN WHOSE NAME ASSESSED, TO WHOM TRANSFERRED, DESCRIPTION OF PROPERTY, TRUE AND FULL VALUATIONS, ASSESSED VALUATIONS, FINAL EQUALIZED VALUE.

Cass County, Minnesota, for Taxes for the Year 1955.

Table with columns: SOLD FOR TAXES, VALUATIONS BY SCHOOL DISTRICTS AS EQUALIZED BY DEPARTMENT OF TAXATION, SPECIAL TAXES, TOTAL TAXES, PAID, WHEN PAID, Number of Receipt, March Settlement 1956, June Settlement 1956, November Settlement 1956, Collections to First Monday in January 1957, Delinquent on First Monday in January 1957, Total Delinquent Tax and Penalty, REMARKS.

Cooley Trail, Duck Pass, Oak Park Beaches, Oak Lawn Beach, Birchwood Terrace, Ray Point

Assessment Roll and Tax List of Real Property in the Town of Thunder Lake

*Indicate Type of Property: R-Residential, C-Commercial, I-Industrial, U-Utility, F-Farm

Cass County, Minnesota, for Taxes for the Year 1955.

Table with columns: IN WHOSE NAME ASSESSED, TO WHOM TRANSFERRED, DESCRIPTION OF PROPERTY, TRUE AND FULL VALUATIONS, ASSESSED VALUATIONS, VALUATIONS BY SCHOOL DISTRICTS AS EQUALIZED BY DEPARTMENT OF TAXATION, SOLD FOR TAXES, PAID, WHEN PAID, Number of Receipts, March Settlement 1956, June Settlement 1956, November Settlement 1956, Collections to First Monday in January 1957, Delinquent on First Monday in January 1957, Total Delinquent Tax and Penalty, REMARKS.

Cooley Trail Duck Pass, Oak Park Beaches, Oak Lawn Beach, Birchwood Terrace, Ray Point

Assessment Roll and Tax List of Real Property in the Town of Thunder Lake, Cass County, Minnesota, for Taxes for the Year 1955.

Table with columns: IN WHOSE NAME ASSESSED, TO WHOM TRANSFERRED, DESCRIPTION OF PROPERTY, TRUE AND FULL VALUATIONS, ASSESSED VALUATIONS, VALUATIONS BY SCHOOL DISTRICTS AS EQUALIZED BY DEPARTMENT OF TAXATION, TAXES, PAID, WHEN PAID, Number of Receipt, March Settlement 1956, June Settlement 1956, November Settlement 1956, Collections to First Monday in January 1957, Delinquent on First Monday in January 1957, Total Delinquent Tax and Penalty, REMARKS.

Cooley Vail Dug Pass, Oak Park Beaches, Oak Lawn Beach, Birchwood Terrace, Ray Point

Assessment Roll and Tax List of Real Property in the Town of Thunder Lake, Minnesota

*Indicate Type of Property: R-Residential, C-Commercial, I-Industrial, U-Utility, F-Farm

Table with columns: IN WHOSE NAME ASSESSED, TO WHOM TRANSFERRED, SUBDIVISION, DESCRIPTION OF PROPERTY, TRUE AND FULL VALUATIONS (LAND, BUILDINGS, MACHINERY, TOTAL), ASSESSED VALUATIONS (RURAL, ALL OTHER, MACHINERY, TOTAL), Total Assessed Value, FINAL EQUALIZED VALUE.

Cass County, Minnesota, for Taxes for the Year 1955.

Table with columns: SOLD FOR TAXES, VALUATIONS BY SCHOOL DISTRICTS AS EQUALIZED BY DEPARTMENT OF TAXATION, Tax including State Homestead, State Tax on Non-Homestead, SPECIAL TAXES, TOTAL TAXES, PAID, WHEN PAID, Number of Receipt, March Settlement, June Settlement, November Settlement, Collections to First Monday in January, Delinquent on First Monday in January, Total Delinquent Tax and Penalty, REMARKS.

Cooley Trail Duck Pass

Oak Park Beaches

Oak Lawn Beach

Plat of P.F. 6

1st Add'n to Birchwood Terrace

Birchwood Terrace

1 Ray Point

Assessment Roll and Tax List of Real Property in the Town of Thunder Lake, Minnesota

Cass County, Minnesota, for Taxes for the Year 1955.

Table with columns: IN WHOSE NAME ASSESSED, TO WHOM TRANSFERRED, SUBDIVISION, TRUTH AND FULL VALUATIONS, ASSESSED VALUATIONS, FINAL EQUALIZED VALUE.

Table with columns: VALUATIONS BY SCHOOL DISTRICTS AS EQUALIZED BY DEPARTMENT OF TAXATION, TAX INCLUDING STATE HOMESTEAD, SPECIAL TAXES, TOTAL TAXES, PAID, WHEN PAID, Number of Receipt, March Settlement 1956, June Settlement 1956, November Settlement 1956, Collections to First Monday in January 1957, Delinquent on First Monday in January 1957, Total Delinquent Tax and Penalty, REMARKS.

Cooley Trail Duck Pass, Oak Park Beaches, Oak Lawn Beach, Birchwood Terrace, Del Ray Point

Flat of P.F. 6, 1st Add'n to Birchwood Terrace, Personal

