

ASSESSMENT & TAX LIST

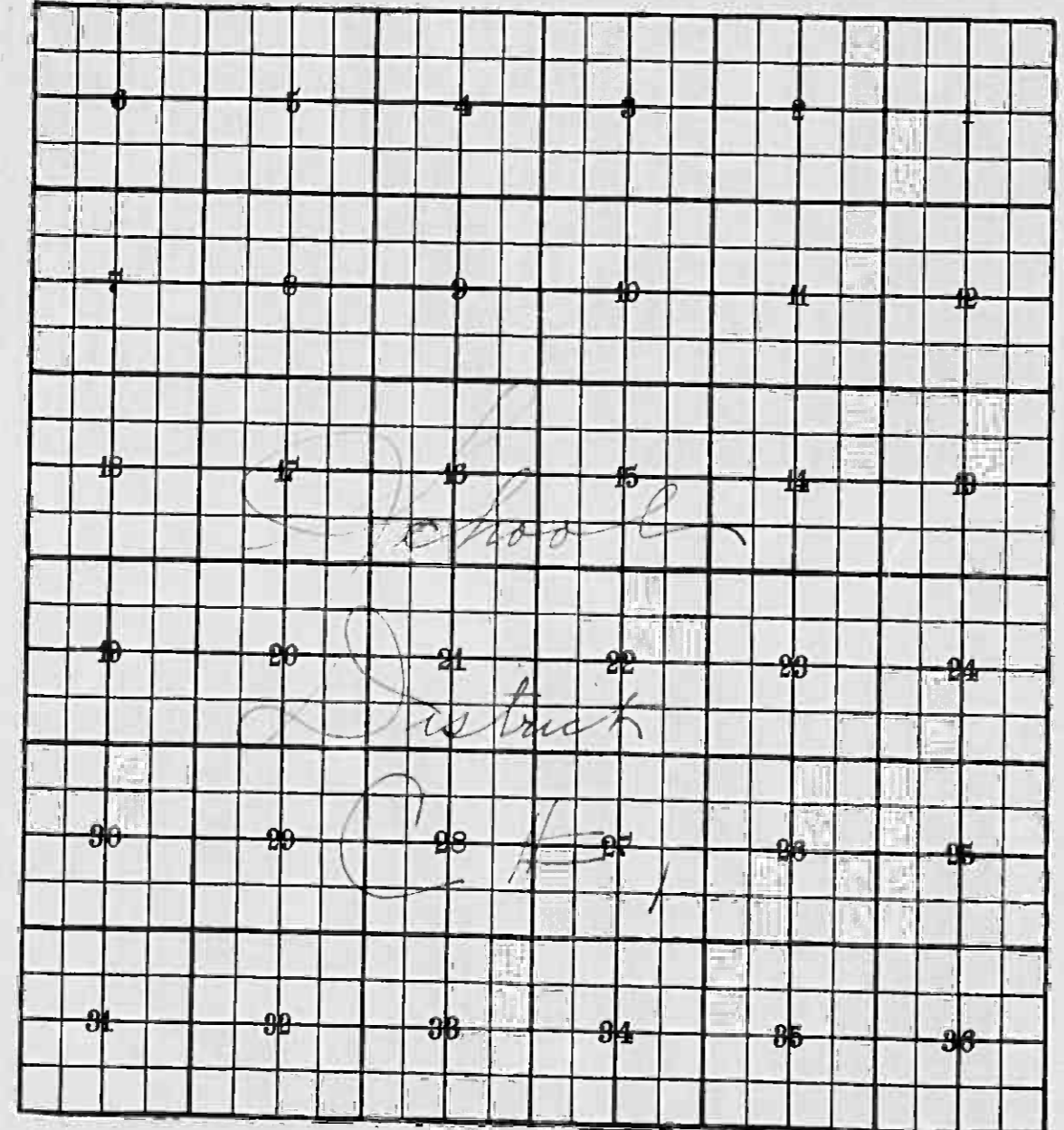
Thunder Lake
1952

INDEX TO SECTIONS

SECTION	PAGE
Sec. 1	
" 2	
" 3	
" 4	
" 5	
" 6	
" 7	
" 8	
" 9	
" 10	
" 11	
" 12	
" 13	
" 14	
" 15	
" 16	
" 17	
" 18	
" 19	
" 20	
" 21	
" 22	
" 23	
" 24	
" 25	
" 26	
" 27	
" 28	
" 29	
" 30	
" 31	
" 32	
" 33	
" 34	
" 35	
" 36	

For Convenience of Auditor in Showing Boundaries of School Districts

Township No. 140 Range No. 26 Mer. P. M.



*All Thunder Lake Twp.
is joined to Sch. Dist. C #1.
8-1951*

Returns Showing Grain Received in or Handled by Elevators, Warehouses and Mills in the _____ of _____ in the County of _____ for the Year Ending May 1, 1952.

NAMES OF OWNERS	ADDRESS	Bushels of Wheat	Bushels of Soy Beans	Bushels of Flax	Total No. of Bushels of Wheat, Soy Beans and Flax	★ Tax of 1/4 Mill per Bushel		Bushels of Corn	Bushels of Barley	Bushels of Rye	Bushels of Oats	Bushels of Buckwheat	Bushels of all Other Grains	Total No. Bushels Corn, Barley, Rye, Oats, Buckwheat and all Other Grains	★ Tax of 1/4 Mill Per Bushel		★ Total Tax		REMARKS		
						Dollars	Cts.								Dollars	Cts.	Dollars	Cts.			

Note ★ Assessors will not fill these Columns

SUMMARY OF TAX COLLECTION

Original Levy	- - - - -	\$ 11,661.68	
Additions	- - - - -	\$ 595.32	
			\$ 12,257.00
Abatements	- - - - -	\$ 695.31	
			\$ 11,561.69
			COLLECTIONS
March Settlement	- - - - -	\$ 1,471.98	
June Settlement	- - - - -	\$ 542.83	
November Settlement	- - - - -	\$ 237.08	
January Settlement	- - - - -	\$ 71.50	\$ 937.39
			\$ 2,188.30
Over Collected	- - - - -	\$ 75.10	
Under Collected	- - - - -	\$	
Delinquent	- - - - -	\$ 2,233.40	\$ 2,188.30
Total	- - - - -		\$ 11,561.69

TABULAR SCHEDULE OF VALUATIONS,

LEVIED IN THE Year OF Thunder Lake

School District No.	VALUATION BY SCHOOL DISTRICTS				RATE OF STATE TAXES		RATE OF COUNTY TAXES										RATE OF TOWN TAXES											Total Rate of Town Tax				
	Agri-cultural Lands	Non-Agri-cultural Lands	Personal Property	Total Value of all Property except Money and Credits	Total Rate of State Tax	Rev.	R. & B.	Welfare	Bonds and Int.	Total Rate of County Tax	Rev.	R. & B.	Drag Tax	State Loan	Ref.	Tuition	Transportation	Un	Local	Special	State Loan	Deficiency	Tuition	Transportation	Un							
C#1	Dollars 31638	Dollars 11763	Dollars 4900 523	Dollars 48824	H. 4.58	Mills 27.1	Mills 12.8	Mills 51.8	Mills 14.3	Mills 105.5	Mills 7.2	Mills 12.3	Mills 1	Mills 10	Mills	Mills	Mills	Mills	Mills	Mills	Mills	Mills	Mills	Mills	Mills	30.5						
					N. H. 2.26 6.84																											
Assessed Value	Rural	All Other	Personal Property	Total																												
Homestead	8951			8951																												
Non-Homestead	34450		5423	39873																												
Total	43401		5423	48824																												

RATES AND TAXES

COUNTY OF CASS, STATE OF MINNESOTA

228.48
226
20.74

SCHOOL TAXES	LOCAL 1 MILL AND SPECIAL SCHOOL TAXES BY DISTRICTS										ALL OTHER TAXES			
	Total Rate of Sch'l Tax	Total Rate of all Taxes	Local 1 Mill	Special	State Loan	Ref. Transp. C.D.	Un B.d.	Total School Taxes	FUNDS	Rate	Amounts			
	87.9	228.48	3216	8040.3	162413	9648	17367	9648	282695	State-Non-Homestead,	8968			
	112.9	253.48	1666	83215	84148	4999	8998	4999	188125	State-Homestead,	22375			
			4882	163718	246501	14647	26365	14647	470820	County Revenue,	132313			
										County Road and Bridge,	62495			
										County Welfare,	250467			
										Bonds and Interest	69818			
											515093			
										Town Revenue,	135153			
										Town Road and Bridge,	60053			
										Town Drag,	4882			
										Town State Loan,	48824			
											148912			
										School Local 1 Mill,	4882			
										School Special,	163718			
										School State Loan,	246501			
										Deficiency				
										Tuition				
										Transportation	14647			
										Capital Outlay	20365			
										Bond & Int. Wking.	14647			
											470820			
											1166168			

Total Taxes Real Estate 10,287.92
Pers. Prop. 1373.76
Total 11,661.68

Total Number of Acres. 8287.44
State of Minnesota, }
COUNTY OF CASS }
Auditor of said County and State aforesaid, do hereby certify that the foregoing is a true and correct Schedule, showing the valuation of all the taxable property, in the Town of Thunder Lake, in said County, the several rates of Taxation and Totals of the several Tax Funds levied thereon for the year A. D. 1952.

Witness my hand and official seal, this 14th day of January, A. D. 1953.

By Helen Walker, Deputy
L. C. Peterson, County Auditor.

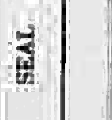


Table with columns: IN WHOSE NAME ASS, TO WHOM TRANSFERRED, DESCRIPTION OF PROPERTY, TRUE AND FULL VALUATIONS, ASSESSED VALUATIONS, VALUATIONS BY SCHOOL DISTRICTS AS EQUALIZED BY DEPARTMENT OF TAXATION, Tax including State Homestead, SPECIAL TAXES, TOTAL TAXES, PAID, WHEN PAID, Number of Receipt, March Settlement 1953, June Settlement 1953, Penalty, November Settlement 1953, Penalty, Collections to First Monday in January 1954, Delinquent on First Monday in January 1954, Total Delinquent Tax and Penalty, REMARKS. Includes handwritten entries for property owners like James P. & Oscar E. Pultrabek, Raymond Brandes, etc.

Assessment Roll and Tax List of Real Property in the Town of Dundee Lake

Cass County, Minnesota, for Taxes for the Year 1952

Main table with columns for Description of Property, True and Full Valuations, Assessed Valuations, Sold for Taxes, and various tax details. Includes handwritten entries for 'Kenneth & Lowell Anderson' and 'Gottfried & Martha Seiffert'.

Assessment Roll and Tax

Cass County, Minnesota, for Taxes for the Year 1952.

IN WHOSE NAME ASSESSED	TO WHOM TRANSFERRED	SUBDIVISION	VALUATIONS BY SCHOOL DISTRICTS AS EQUALIZED BY DEPARTMENT OF TAXATION								SPECIAL TAXES	TOTAL TAXES	PAID	WHEN PAID	Number of Receipt	March Settlement 1953	June Settlement 1953	Penalty	November Settlement 1953	Penalty	Collections to First Monday in January 1954	Penalty	Delinquent on First Monday in January 1954	Total Delinquent Tax and Penalty	REMARKS			
			District No.	District No.	District No.	District No.	District No.	District No.	District No.	District No.																District No.	District No.	
Mrs. Hugo Eisenachs		1.05 ac. N.E. 1/4 of N.E. 1/4												2nd Half Paid	SEP 30 1953													
Edla Doretta Meester		1.4 ac. of N.E. 1/4												1st Half Paid	MAR 23 1953													
State of Minnesota		2.6 ac. of Lot 1												2 PAID IN FULL	MAY 29 1953													
Arvin C. & Eleanor Becker		3.10 ac. of Lot 2												3														
Wilhelmena Bluhm		100' x 500' of Lot 2 & 1/4 ac. of Lot 3												4 PAID IN FULL	MAY 29 1953													
Cecil A. Bluhm		1/4 of N.E. 1/4 of Lot 3												5 PAID IN FULL	OCT 20 1953													
Ease M. Bluhm		1/4 of N.W. 1/4 of Lot 2 less 9.11 a												6 Balance Paid	OCT 20 1953													
Eleanor G. Bluhm		1/4 of S.W. 1/4 of Lot 2												7 Balance Paid	OCT 20 1953													
Hugh & Leticia Eisenachs		5.15 ac. of Lot 1												8 PAID IN FULL	MAY 29 1953													
Cecil Bluhm		1/4 of S.W. 1/4 of Lot 5												9 PAID IN FULL	MAY 29 1953													
Alva & Ellen Elliot		1/4 of S.W. 1/4 of Lot 1												10 Balance Paid	MAR 23 1953													13.85 Abated
Cecil A. Bluhm		1/4 of S.W. 1/4 of Lot 1												11 Balance Paid	OCT 20 1953													
Cecil A. Bluhm		1/4 of S.W. 1/4 of Lot 1												12 Balance Paid	MAY 29 1953													6522 71.74
Cecil A. Bluhm		1/4 of S.W. 1/4 of Lot 1												13 Balance Paid	OCT 20 1953													1462 816.08
Cecil A. Bluhm		1/4 of S.W. 1/4 of Lot 1												14 Balance Paid	MAY 29 1953													
Cecil A. Bluhm		1/4 of S.E. 1/4 of Lot 1												15														
Cecil A. Bluhm		1/4 of S.W. 1/4 of Lot 1												16 Balance Paid	OCT 20 1953													
Cecil A. Bluhm		1/4 of S.W. 1/4 of Lot 1												17 Balance Paid	MAY 29 1953													
Cecil A. Bluhm		1/4 of S.W. 1/4 of Lot 1												18														
Thomas Meester		1/4 of S.E. 1/4 of Lot 1												19 LD FOR TAXES														
														20														

100' x 500' of Lot 2 & 1/4 ac. of Lot 3
Sec 16-140 26

62.5'	62.5'	62.5'	62.5'	62.5'	62.5'	62.5'	62.5'	62.5'	62.5'
Howard Bluhm	Arthur Bluhm	Carl Bluhm	Carl M. Bluhm	Emma Bluhm	Ruben Bluhm	Ernest Bluhm	John Bluhm	John Bluhm	John Bluhm

Handwritten notes and signatures in the left margin.

Handwritten notes in the middle margin.

Summary totals at the bottom of the table: 338 34, 2551 1346, 3897, 562, 329, 9.11

COURT TRAIL-DUCK PASS, OAK PARK BELONGS, GOOD FEEL, Plat of P.

Assessment Roll and Tax List of Real Property in the Town of Thunder Lake

Cass County, Minnesota, for Taxes for the Year 1952.

Table with columns for IN WHOSE NAME ASSESSED, TO WHOM TRANSFERRED, DESCRIPTION OF PROPERTY, TRUE AND FULL VALUATIONS, ASSESSED VALUATIONS, VALUATIONS BY SCHOOL DISTRICTS AS EQUALIZED BY DEPARTMENT OF TAXATION, TAXES, PAID, WHEN PAID, and REMARKS.

Thosa J. Wheeler
Ruben L. Mier
Emma A. Horace
Arthur R. Bluhm
Howard C. Bluhm

1 Tract A. of Lots 2 & 3
2 Tract B. of Lots 2 & 3
3 Tract C. of Lots 2 & 3
4 Tract D. of Lots 2 & 3
5 Tract E. of Lots 2 & 3
6 NE 1/4 of NW 1/4
7 NW 1/4 of NW 1/4
8 SW 1/4 of NW 1/4
9 SE 1/4 of NW 1/4
10
11 NE 1/4 of SW 1/4
12 NW 1/4 of SW 1/4
13 SW 1/4 of SW 1/4
14 SE 1/4 of SW 1/4
15
16 NE 1/4 of SE 1/4
17 NW 1/4 of SE 1/4
18 SW 1/4 of SE 1/4
19 SE 1/4 of SE 1/4
20

Table with columns: Dollars, Rural, All Other, Machinery, Total Assessed Value, Final Equalized Value. Rows 1-5.

Table with columns: SOLD FOR TAXES, VALUATIONS BY SCHOOL DISTRICTS AS EQUALIZED BY DEPARTMENT OF TAXATION, TAXES, PAID, WHEN PAID, and REMARKS. Rows 1-20.

150 150 50 50

50 1140 10 1150

575 575

COOPER TRAIL-DICK EAST OAK PARK HEADERS ROAD WEST PLAT OF P

Assessment Roll and Tax List of Real Property in the Town of Thunder Lake

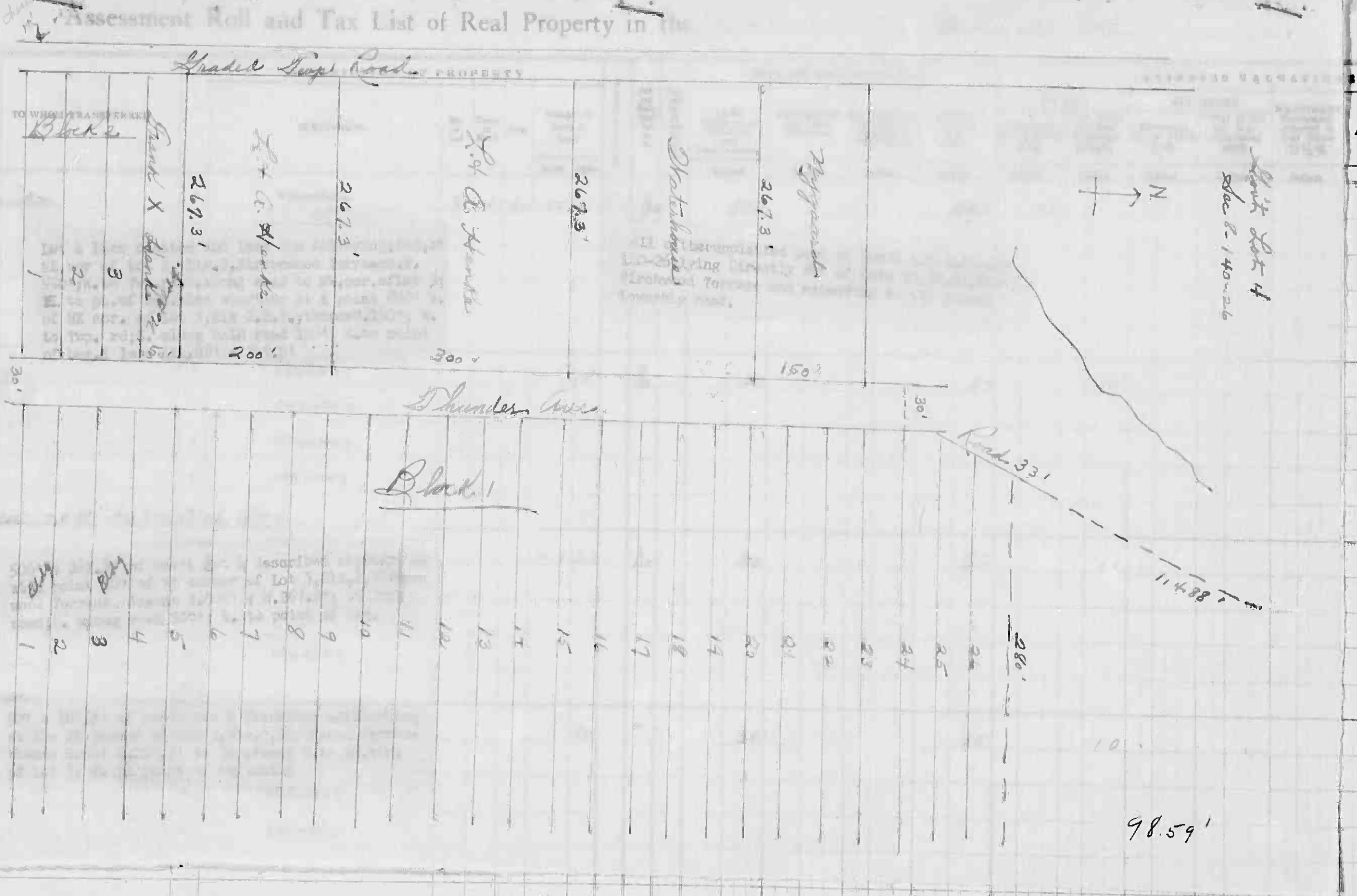
Table with columns: IN WHOSE NAME ASSESSED, TO WHOM TRANSFERRED, DESCRIPTION OF PROPERTY, TRUE AND FULL VALUATIONS, ASSESSED VALUATIONS, FINAL EQUALIZED VALUE. Includes handwritten entries for John E. Lange, C. C. Waterhouse, Frank X. Henke, and Anna C. & Louis C. Henke.

Cass County, Minnesota, for Taxes for the Year 1952.

Table with columns: SOLD FOR TAXES, VALUATIONS BY SCHOOL DISTRICTS AS EQUALIZED BY DEPARTMENT OF TAXATION, Tax including State Homestead, State Tax on Non-Homestead, SPECIAL TAXES, TOTAL TAXES, PAID, WHEN PAID, Number of Receipt, March Settlement 1953, June Settlement 1953, November Settlement 1953, Collections to First Monday in January 1954, Delinquent on First Monday in January 1954, Total Delinquent Tax and Penalty, REMARKS. Includes handwritten tax calculations and payment dates.

Cass County, Minnesota, for Taxes for the Year 1952.

Form 5CD (52)



IN WHOSE NAME ASSESSED

Edwin C. Waters

Lillian Mary
Harlow K. & Mary Lou
By Grant

Charles L. Water

Louise LaLonde
Sen

Frank Glende

TOTAL ASSESSED VALUE	Total Assessed Value as Equalized by the Board of Review	FINAL EQUALIZED VALUE
Dollars	Dollars	Dollars
78		
10		
10		
108		

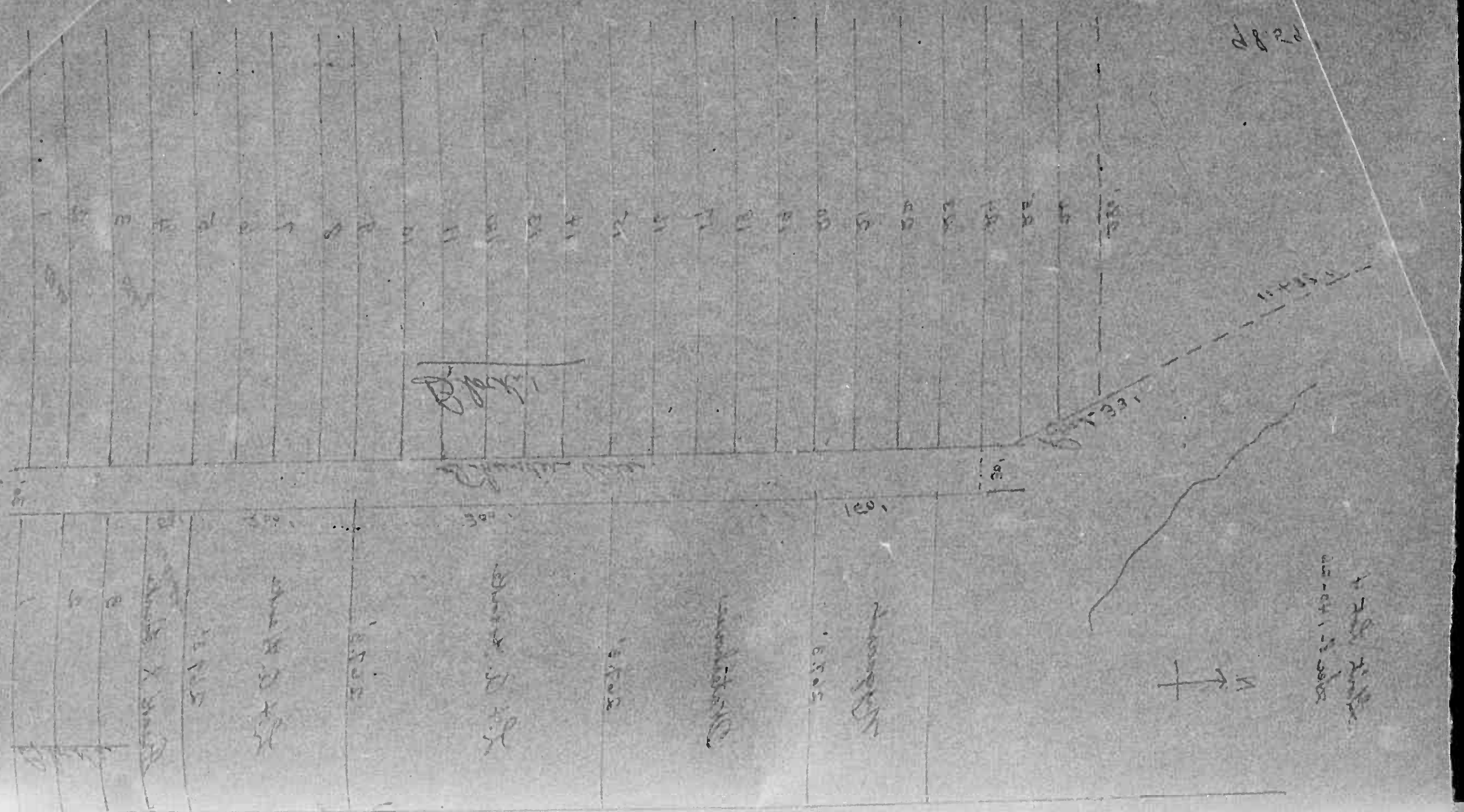
SOLD FOR TAXES	VALUATIONS BY SCHOOL DISTRICTS AS EQUALIZED BY DEPARTMENT OF TAXATION						Tax including State Homestead	State Tax on Non-Homestead	SPECIAL TAXES	TOTAL TAXES	PAID	WHEN PAID	Number of Receipt	March Settlement 1953	June Settlement 1953	Penalty	November Settlement 1953	Penalty	Collections to First Monday in January 1954	Penalty	Delinquent on First Monday in January 1954	Total Delinquent Tax and Penalty	REMARKS
	District No. 1	District No. 2	District No. 3	District No. 4	District No. 5	District No. 6																	
	1						17.82		17.82		1 PAID IN FULL	MAY 2 1953	6557		17.82								
	2										2												
	3										3												
	4										4												
	5										5												
	6						2.28	0.2	2.30		6 PAID IN FULL	MAY 29 1953	1182		2.30								
	7										7												
	8										8												
	9										9												
	10										10												
SOLD FOR TAXES	11						2.28	0.2	2.30		11 2nd Half Paid	OCT 31 1953	15097		1.15								
	12										12												
	13										13												
	14										14												
	15										15												
	16						2.28	0.2	2.30		16 2nd Half Paid	JUL 1953	1196		1.15								
	17										17												
	18										18												
	19										19												
	20						24.66	0.6	24.72		20 1st Half Paid	APR 17 1953	3276		2.30								

COOLEY TRAIL-DUCK POND OAK PARK BRIDGE OOD CEMETERY Plat of P

Form 507 (5) Cass County, Minnesota

Cass County, Minnesota, for Taxes for the Year 1952.

IN WHOSE NAME ASSESSED	TO WHOM TRANSFERRED	DESCRIPTION OF PROPERTY			TRUE AND FULL VALUATIONS					ASSESSED VALUATIONS				FINAL EQUALIZED VALUE	VALUATIONS BY SCHOOL DISTRICTS AS EQUALIZED BY DEPARTMENT OF TAXATION							PAID	WHEN PAID	Number of Receipt	March Settlement 1953	June Settlement 1953	November Settlement 1953	Collections to First Monday in January 1954	Penalty	Delinquent on First Monday in January 1954	Total Delinquent Tax and Penalty	REMARKS					
		Subdivision	Sec. of Lot	Town or Block	Acres	LAND	BUILDINGS	MACHINERY	TOTAL	RURAL	ALL OTHER	MACHINERY	TOTAL ASSESSED VALUE		District No.	District No.	District No.	District No.	District No.	District No.	Tax including State Homestead												SPECIAL TAXES	TOTAL TAXES	Month	Day	Year
Edwin L. Waterhouse		NE 1/4 Sec. 4	8	42	31				390			78	390	20%	33 2/3%	25%	40%	33 1/3%	78	1782	228	02	1782	1	PAID IN FULL	MAY 26 1953	6557		1782								
Lot 1 less platted and less the following; Beg. at NE cor. of Lot 3, Blk. 2, Birchwood Terrace, N. 550'; W. to Twp. rd; S. along road to NW cor. of Lot 3; E. to pt. of beg. Also starting at a point 800' N. of NE cor. of Lot 3, Blk. 2, B. T.; thence N. 150'; W. to Twp. rd; S. along said road 150'; E. to point of beg. & less 111' x 88' x 215.9'		All of the unplatted part of Gov't Lot 1, Sec. 8-140-26, lying directly W. of Lots 20, 21, 22, Blk. 1, Birchwood Terrace and extending to the graded township road.							30	10		10							10		228	02	230	6	PAID IN FULL	MAY 29 1953	11482		230								
Harlan Mack Lillian K. J. Mack Lillian K. J. Mack Lillian K. J. Mack		NE 1/4 of NW 1/4			18		No	30		30	10	10							10		228	02	230	7													
Charles L. Waterhouse Louise L. Waterhouse Louise L. Waterhouse		SW 1/4 of NW 1/4						30		30	10	10							10		228	02	230	11													
		SE 1/4 of SW 1/4						30		30	10	10							10		228	02	230	11													
Frank Lentz		SE 1/4 of NW 1/4			30			30		30	10	10							10		228	02	230	16													
		SW 1/4 of SE 1/4						30		30	10	10							10		228	02	230	17													
		SE 1/4 of SE 1/4						30		30	10	10							10		228	02	230	18													
		SW 1/4 of SE 1/4						30		30	10	10							10		228	02	230	19													
		SE 1/4 of SE 1/4						30		30	10	10							10		228	02	230	20													
		SW 1/4 of SE 1/4						30		30	10	10							10		228	02	230	20													
					43 99			480		480	78	30							108		24.66	06	2472														



Assessment Roll and Tax List of Real Property in the Town of Thunder Lake

Cass County, Minnesota, for Taxes for the Year 1952.

Table with columns: IN WHOSE NAME ASSESSED, TO WHOM TRANSFERRED, DESCRIPTION OF PROPERTY, TRUE AND FULL VALUATIONS, ASSESSED VALUATIONS, VALUATIONS BY SCHOOL DISTRICTS AS EQUALIZED BY DEPARTMENT OF TAXATION, TAXES, PAID, WHEN PAID, etc.

Assessment Roll and Tax List of Real Property in the Town of Thunder Lake

Form 300 (52) with amend. 1-2-52

Cass County, Minnesota, for Taxes for the Year 1952.

IN WHOSE NAME ASSESSED	TO WHOM TRANSFERRED	DESCRIPTION OF PROPERTY					No. School District	Indicate Homestead Yes or No	Indicate Agricultural Yes or No	TRUE AND FULL VALUATIONS					ASSESSED VALUATIONS					FINAL EQUALIZED VALUE	SOLD FOR TAXES	VALUATIONS BY SCHOOL DISTRICTS AS EQUALIZED BY DEPARTMENT OF TAXATION						Tax Including State Homestead	State Tax on Non-Homestead	SPECIAL TAXES	TOTAL TAXES	PAID	WHEN PAID	Number of Receipt	March Settlement 1953	June Settlement 1953	Penalty	November Settlement 1953	Penalty	Collections to First Monday in January 1954	Penalty	Delinquent on First Monday in January 1954	Total Delinquent Tax and Penalty	REMARKS	
		SUBDIVISION	Sec. or Lot	Town or Block	Rsg.	Number of Acres of Land				LAND Exclusive of Structures and Improvements	BUILDINGS and Other Structures	MACHINERY Permanently Attached to Real Estate	TOTAL True and Full Value	RURAL		ALL OTHER		MACHINERY Permanently Attached to Real Estate 33 1/3%	TOTAL ASSESSED VALUE			Total Assessed Value as Equalized by the Board of Review	District No.	District No.	District No.	District No.	District No.																		District No.
														Homestead Up to \$4,000 20%	Over \$4,000 and Non-Homestead 33 1/3%	Homestead Up to \$4,000 25%	Over \$4,000 and Non-Homestead 40%																												
		Acres	100th	Dollars	Dollars	Dollars				Dollars	Dollars	Dollars	Dollars	Dollars	Dollars	Dollars	Dollars	Dollars	Dollars			Dollars	\$	cts.	\$	cts.	\$																		cts.
James J. Mc Bride		NE 1/4 of SE 1/4					10.17a.26	40	C-1	Yes	180				180	36	36	1					822	26		822	1	1st Half Paid	MAY 29 1953	11486			411			411	452								
Edward G. Jennie A. Adams		NW 1/4 of NW 1/4						174		No	312	90			402	134	134	2					3062	30		3092	2	2nd Half Paid	AUG 18 1953	12850			1546												
J. C. Huffman		NE 1/4 of SE 1/4						210		No	210				210	70	70	3					1600	16		1616	3	1st Half Paid	MAY 29 1953	11487						1616	1778								
Jack & Rose Hayward		NW 1/4 of NW 1/4								No																																			
		NW 1/4 of NW 1/4								No																																			
		SW 1/4 of NW 1/4								No																																			
		SE 1/4 of NW 1/4								No																																			
		NE 1/4 of SW 1/4								No																																			
		NW 1/4 of SW 1/4								No																																			
		SW 1/4 of SW 1/4								No																																			
		SE 1/4 of SW 1/4								No																																			
		NE 1/4 of SE 1/4								No																																			
		NW 1/4 of SE 1/4								No																																			
		SW 1/4 of SE 1/4								No																																			
		SE 1/4 of SE 1/4								No																																			
								69 175			702	90			792	36	204																												

COONEY TRAIT-DUCK PI. THE PARK BLDG. 1131 S. 10th St. PLAT OF P. 1

Assessment Roll and Tax List of Real Property in the Town of Down of Thunder Lake

Cass County, Minnesota, for Taxes for the Year 1952.

Table with columns: IN WHOSE NAME ASSESSED, TO WHOM TRANSFERRED, DESCRIPTION OF PROPERTY, TRUE AND FULL VALUATIONS, ASSESSED VALUATIONS, VALUATIONS BY SCHOOL DISTRICTS AS EQUALIZED BY DEPARTMENT OF TAXATION, SOLD FOR TAXES, PAID, WHEN PAID, Number of Receipt, March Settlement 1953, June Settlement 1953, November Settlement 1953, Collections to First Monday in January 1954, Delinquent on First Monday in January 1954, Total Delinquent Tax and Penalty, REMARKS.

Assessment Roll and Tax List of Real Property in the Town of Duaneville of Cass County, Minnesota

Cass County, Minnesota, for Taxes for the Year 1952.

Form 517 (52) - 1-1-52

Table with columns: IN WHOSE NAME ASSESSED, TO WHOM TRANSFERRED, DESCRIPTION OF PROPERTY, TRUE AND FULL VALUATIONS, ASSESSED VALUATIONS, VALUATIONS BY SCHOOL DISTRICTS AS EQUALIZED BY DEPARTMENT OF TAXATION, Tax including State Homestead, State Tax on Non-Homestead, SPECIAL TAXES, TOTAL TAXES, PAID, WHEN PAID, Number of Receipt, March Settlement 1953, June Settlement 1953, Penalty, November Settlement 1953, Collections to First Monday in January 1954, Delinquent on First Monday in January 1954, Total Delinquent Tax and Penalty, REMARKS. Rows include property owners like George Bluhm, John H. & Charlotte Larson, Maurice E. & Adeline F. Roggen, etc.

Assessment Roll and Tax List of Real Property in the Town of Thunder Lake

Cass County, Minnesota, for Taxes for the Year 1952.

IN WHOSE NAME ASSESSED	TO WHOM TRANSFERRED	DESCRIPTION OF PROPERTY				TRUE AND FULL VALUATIONS					ASSESSED VALUATIONS					FINAL EQUALIZED VALUE	SOLD FOR TAXES	VALUATIONS BY SCHOOL DISTRICTS AS EQUALIZED BY DEPARTMENT OF TAXATION						TAX including State Homestead	State Tax on Non-Homestead	SPECIAL TAXES	TOTAL TAXES	PAID	WHEN PAID	Number of Receipt	March Settlement 1953	June Settlement 1953	Penalty	November Settlement 1953	Penalty	Collections to First Monday in January 1954	Penalty	Delinquent on First Monday in January 1954	Total Delinquent Tax and Penalty	REMARKS													
		SUBDIVISION	Sec. or Lot	Town or Block	Rng.	Number of Acres of Land	LAND EXCLUSIVE OF STRUCTURES AND IMPROVEMENTS	BUILDINGS and Other Structures	MACHINERY Permanently Attached to Real Estate	TOTAL True and Full Value	RURAL		ALL OTHER		MACHINERY Permanently Attached to Real Estate			TOTAL ASSESSED VALUE	Total Assessed Value as Equalized by the Board of Review	District No.	District No.	District No.	District No.																		District No.	District No.	Rate	Rate	Rate	Rate	Rate	Rate	Rate	Rate	Rate	Rate	Rate
											Homestead Up to \$4,000 20%	Over \$4,000 and Non-Homestead 33 1/4%	Homestead Up to \$4,000 25%	Over \$4,000 and Non-Homestead 40%																																							
Robert C. Sherry & Pond		NE 1/4 of NE 1/4 of Lot 2			27.14020	85.2-1	No	25	1010	1035			345	345		1							345			8746	78	8824	1	PAID IN FULL	MAY 29 1953	1483									8824												
Samuel Agnes E. Wesche		NW 1/4 of Lot 9			450	"	"	150	120	270			90	90		2						90			2056	20	2076	2	PAID IN FULL	SEP 25 1953	13170									2076-68													
Thos. F. Froid		SE 1/4 of NE 1/4 of Lot 8			350	No	"	90	162	252			84	84		3						84			1920	18	1938	3	PAID IN FULL	MAY 29 1953	11508									1938													
David M. & Mabel L. Felkner		NE 1/4 of NW 1/4 of Lot 8			700	No	"	180		180			60	60		6						60			1370	14	1384	6														1384											
Albert J. & Anne Jacker		NW 1/4 of NE 1/4 of Lot 8			350	"	"	90	240	330			110	110		7						110			2514	24	2538	7	PAID IN FULL	AUG 17 1953	12966									2538-63													
Clifford H. & Hazel E. Thomas		SW 1/4 of NW 1/4 of Lot 9			90	"	"	30		30			10	10		8						10			228	02	230	8	PAID IN FULL	OCT 31 1953	15822									115													
Wm. C. & Thos. E. Amers		NE 1/4 of SW 1/4 of Lot 8			350	"	"	70	110	180			60	60		10						60			1370	14	1384	10	PAID IN FULL	MAY 29 1953	9137											1384											
		NW 1/4 of SW 1/4														11																																					
		SE 1/4 of SW 1/4														12																																					
		SW 1/4 of SW 1/4														13																																					
		SE 1/4 of SW 1/4														14																																					
		NE 1/4 of SE 1/4														15																																					
		NW 1/4 of SE 1/4														16																																					
		SW 1/4 of SE 1/4														17																																					
		SE 1/4 of SE 1/4														18																																					
																19																																					
																20																																					
										2375			635	11640		2977												9458																18204			15261		4709		1384		

COPY - TRAIL-DUCK EAST OAK PARK BLDG'S GOOD FRIDAY Plat of P. 1

Assessment Roll and Tax List of Real Property in the Town of Thunder Lake

Cass County, Minnesota, for Taxes for the Year 1952.

Form-SCD (52) IN WHOSE NAME ASSESSED	TO WHOM TRANSFERRED	DESCRIPTION OF PROPERTY						TRUE AND FULL VALUATIONS								FINAL EQUALIZED VALUE	SOLD FOR TAXES	VALUATIONS BY SCHOOL DISTRICTS AS EQUALIZED BY DEPARTMENT OF TAXATION						PAID	WHEN PAID	Number of Receipt	March Settlement 1953	June Settlement 1953	Penalty	November Settlement 1953	Penalty	Collections to First Monday in January 1954	Penalty	Delinquent on First Monday in January 1954	Total Delinquent Tax and Penalty	REMARKS													
		SUBDIVISION	Sec. or Lot	Town or Block	Rng.	Number of Acres of Land		Machinery Permanently Attached to Real Estate	TOTAL True and Full Value	RURAL		ALL OTHER		Machinery Permanently Attached to Real Estate	TOTAL ASSESSED VALUE			Total Assessed Value as Equalized by the Board of Review	District No.	District No.	District No.	District No.	District No.														District No.	Mills	Mills	Mills	Mills	Mills	Mills	Mills	Mills	Mills	Mills	Mills	Mills
						Acres	100ths			Homestead Up to \$4,000 20%	Over \$4,000 and Non-Homestead 33 1/3%	Homestead Up to \$4,000 25%	Over \$4,000 and Non-Homestead 40%																																				
State of Minnesota		NE 1/4 of NE 1/4				24 1/2	26																																										
State of Minnesota		NW 1/4 of NE 1/4																																															
State of Minnesota		SW 1/4 of NE 1/4																																															
State of Minnesota		SE 1/4 of NE 1/4																																															
State of Minnesota		NE 1/4 of NW 1/4																																															
State of Minnesota		NW 1/4 of NW 1/4																																															
State of Minnesota		SW 1/4 of NW 1/4																																															
State of Minnesota		SE 1/4 of NW 1/4																																															
Jena Moving Co.		NE 1/4 of SW 1/4				40		No	270		270	90	90			90			90		20.56	20	20.76					11	1038		1038																		
"	"	NW 1/4 of SW 1/4				40		"	270		270	90	90			90			90		20.56	20	20.76				12	1038		1038																			
"	"	SW 1/4 of SW 1/4				40		"	270		270	90	90			90			90		20.56	20	20.76				13	1038		1038																			
"	"	SE 1/4 of SW 1/4				40		"	270		270	90	90			90			90		20.56	20	20.76				14	1038		1038																			
State of Minnesota		NE 1/4 of SE 1/4																																															
State of Minnesota		NW 1/4 of SE 1/4																																															
State of Minnesota		SW 1/4 of SE 1/4																																															
State of Minnesota		SE 1/4 of SE 1/4																																															
						160.00			1080		360	360			360						82.24	80	93.04						4152		4152																		

COOPER TRAIL-DUCK PARS
 GAT PARS BRADERS
 BOOD BRADERS
 Plat of P.F.

Assessment Roll and Tax List of Real Property in the Town of Thunder Lake

Cass County, Minnesota, for Taxes for the Year 1952.

Table with columns: IN WHOSE NAME ASSESSED, TO WHOM TRANSFERRED, DESCRIPTION OF PROPERTY, TRUE AND FULL VALUATIONS, ASSESSED VALUATIONS, VALUATIONS BY SCHOOL DISTRICTS AS EQUALIZED BY DEPARTMENT OF TAXATION, TAXES, PAID, WHEN PAID, Number of Receipt, March Settlement 1953, June Settlement 1953, November Settlement 1953, Collections to First Monday in January 1954, Delinquent on First Monday in January 1954, Total Delinquent Tax and Penalty, REMARKS.

Assessment Roll and Tax List of Real Property in the Town of Thunder Lake

Table with columns: IN WHOSE NAME ASSESSED, TO WHOM TRANSFERRED, DESCRIPTION OF PROPERTY, TRUE AND FULL VALUATIONS, ASSESSED VALUATIONS, FINAL EQUALIZED VALUE. Includes handwritten entries for various lots and owners like H. Thomas, Myrtle Brown, Ernest B. Swanson, Frank & Ruby Graham, Max G. & Helen C. Allent, Lester E. Theisen & Stover.

Cass County, Minnesota, for Taxes for the Year 1952.

Table with columns: SOLD FOR TAXES, VALUATIONS BY SCHOOL DISTRICTS AS EQUALIZED BY DEPARTMENT OF TAXATION, Tax including State Homestead, State Tax on Non-Homestead, SPECIAL TAXES, TOTAL TAXES, PAID, WHEN PAID, Number of Receipt, March Settlement 1953, June Settlement 1953, Penalty, November Settlement 1953, Penalty, Collections to First Monday in January 1954, Delinquent on First Monday in January 1954, Total Delinquent Tax and Penalty, REMARKS. Includes handwritten entries for tax amounts and payment dates.

Assessment Roll and Tax List of Real Property in the Town of *Luton* of *Dundas Lake*

Form 942 (5-12-50) MINNESOTA

IN WHOSE NAME ASSESSED	TO WHOM TRANSFERRED	DESCRIPTION OF PROPERTY				No. School District	Indicate Homestead Yes or No	Indicate Agricultural Yes or No	TRUE AND FULL VALUATIONS				ASSESSED VALUATIONS					FINAL EQUALIZED VALUE			
		SUBDIVISION	Sec. or Lot	Town or Block	Rng.				Number of Acres of Land	LAND Exclusive of Structures and Improvements	BUILDINGS and Other Structures	MACHINERY Permanently Attached to Real Estate	TOTAL True and Full Value	RURAL		ALL OTHER			MACHINERY Permanently Attached to Real Estate 33 1/3 %	TOTAL ASSESSED VALUE	Total Assessed Value as Equalized by the Board of Review
														Acres	100ths	Homestead Up to \$4,000 20%	Over \$4,000 and Non-Homestead 33 1/3 %				
State of Minnesota		NE 1/4 of NE 1/4				36 1/4 26		C-1													
State of Minnesota		NW 1/4 of NE 1/4																			
State of Minnesota		SW 1/4 of NE 1/4																			
State of Minnesota		SE 1/4 of NE 1/4																			
State of Minnesota		NE 1/4 of NW 1/4																			
State of Minnesota		NW 1/4 of NW 1/4																			
State of Minnesota		SW 1/4 of NW 1/4																			
State of Minnesota		SE 1/4 of NW 1/4																			
State of Minnesota		NE 1/4 of SW 1/4																			
State of Minnesota		NW 1/4 of SW 1/4																			
State of Minnesota		SW 1/4 of SW 1/4																			
State of Minnesota		SE 1/4 of SW 1/4																			
State of Minnesota		NE 1/4 of SE 1/4																			
State of Minnesota		NW 1/4 of SE 1/4																			
State of Minnesota		SW 1/4 of SE 1/4																			
State of Minnesota		SE 1/4 of SE 1/4																			
		Garage				828 241															

Cass County, Minnesota, for Taxes for the Year 1952.

SOLD FOR TAXES	VALUATIONS BY SCHOOL DISTRICTS AS EQUALIZED BY DEPARTMENT OF TAXATION						Tax Including State Homestead	State Tax on Non-Homestead	SPECIAL TAXES	TOTAL TAXES	PAID	WHEN PAID	Number of Receipt	March Settlement 1953	June Settlement 1953	Penalty	November Settlement 1953	Penalty	Collections to First Monday in January 1954	Penalty	Delinquent on First Monday in January 1954	Total Delinquent Tax and Penalty	REMARKS	
	District No.	District No.	District No.	District No.	District No.	District No.																		
	Rate	Rate	Rate	Rate	Rate	Rate																		

COPIES PLAT - BOOK PAGES
 OAK PARK BEACHES
 WOOD BEACHES
 Plat of P. F. 6

Assessment Roll and Tax List of Real Property in the Town of Down of Thunder Lake

COOLEY TRAIL-DUCK PASS

IN WHOSE NAME ASSESSED	TO WHOM TRANSFERRED	SUBDIVISION	Sec. or Lot	Town or Block	Rng.	Number of Acres of Land	TRUE AND FULL VALUATIONS					ASSESSED VALUATIONS					FINAL EQUALIZED VALUE		
							LAND Exclusive of Structures and Improvements	BUILDINGS and Other Structures	MACHINERY Permanently Attached to Real Estate	TOTAL True and Full Value	RURAL		ALL OTHER		MACHINERY Permanently Attached to Real Estate	TOTAL ASSESSED VALUE		Total Assessed Value as Equalized by the Board of Review	
											Homestead Up to \$4,000 20%	Over \$4,000 and Non-Homestead 33 1/3%	Homestead Up to \$4,000 25%	Over \$4,000 and Non-Homestead 40%					Dollars
			Acres	100ths		Dollars	Dollars	Dollars	Dollars	Dollars	Dollars	Dollars	Dollars	Dollars	Dollars	Dollars	Dollars	Dollars	
Edward Dickson	Edwards & Huffel	Cooley Trail Duck Pass (Part of Lot 2 Sec 3-14-26)	1				30	320	350	70				70					
Jack & Rose Hayward	"	"	2				30	500	530	106				106					
"	"	"	3				30	100	130	26				26					
L. J. Daneris	"	"	4				30	180	210	70				70					
"	"	"	5				30		30	10				10					
Guy L. Pugh	"	"	6				30		30	10				10					
"	"	"	7				30		30	10				10					
"	"	"	8				30	150	180	60				60					
Fred Markwardt & L. Anderson	"	"	9				30	75	105	35				35					
			10																
			11																
			12																
			13																
			14																
			15																
			16																
			17																
			18																
			19																
			20																

270 1925 1595 202 195 397

Cass County, Minnesota, for Taxes for the Year 1952.

SOLD FOR TAXES	VALUATIONS BY SCHOOL DISTRICTS AS EQUALIZED BY DEPARTMENT OF TAXATION						Tax including State Homestead	State Tax on Non-Homestead	SPECIAL TAXES	TOTAL TAXES	PAID	WHEN PAID	Number of Receipt	March Settlement 1953	June Settlement 1953	Penalty	November Settlement 1953	Penalty	Collections to First Monday in January 1954	Penalty	Delinquent on First Monday in January 1954	Total Delinquent Tax and Penalty	REMARKS
	District No.	District No.	District No.	District No.	District No.	District No.																	
	Rate	Rate	Rate	Rate	Rate	Rate																	
1																							
2																							
3																							
4																							
5																							
6																							
7																							
8																							
9																							
10																							
11																							
12																							
13																							
14																							
15																							
16																							
17																							
18																							
19																							
20																							

202 195 397 60 64 44 101 08 6762 3346

OAK PARK BEACHES BOOD TERRACE Plat of P.F.

Assessment Roll and Tax List of Real Property in the *Town* of *Thunder Lake*

Cass County, Minnesota, for Taxes for the Year 1952.

OAK PARK BEACHES

IN WHOSE NAME ASSESSED	TO WHOM TRANSFERRED	SUBDIVISION	Sec. or Lot	Town or Block	Rtg.	Number of Acres of Land	No. School District	Indicate Homestead Yes or No	Indicate Agricultural Yes or No	TRUE AND FULL VALUATIONS			ASSESSED VALUATIONS						FINAL EQUALIZED VALUE	SOLD FOR TAXES	VALIDATIONS BY SCHOOL DISTRICTS AS EQUALIZED BY DEPARTMENT OF TAXATION											REMARKS																
										LAND Excludes of Structures and Improvements	BUILDINGS and Other Structures	MACHINERY Permanently Attached to Real Estate	TOTAL True and Full Value	RURAL		ALL OTHER		MACHINERY Permanently Attached to Real Estate			TOTAL ASSESSED VALUE	Total Assessed Value as Equalized by the Board of Review	District No.	District Rate	District Mills	District No.	District Rate	District Mills	District No.	District Rate	District Mills		Tax including State Homestead	State Tax on Non-Homestead	SPECIAL TAXES	TOTAL TAXES	PAID	WHEN PAID	Number of Receipt	March Settlement 1953	June Settlement 1953	Penalty	November Settlement 1953	Penalty	Collections to First Monday in January 1954	Penalty	Delinquent on First Monday in January 1954	Total Delinquent Tax and Penalty
														Homestead Up to \$4,000 20%	Over \$4,000 and Non-Homestead 33 1/8%	Homestead Up to \$4,000 25%	Over \$4,000 and Non-Homestead 40%																															
Thos. Musick		Oak Park Beaches	1							30		30	6								6					1															152							
Garon Musick		Oak Park Beaches	2							30		30	6								6					2															152							
"	"	"	3							30		30	6								6					3															152							
"	"	"	4							30		30	6								6					4															152							
"	"	"	5							30		30	6								6					5															152							
"	"	"	6							30		30	6								6					6															152							
"	"	"	7							30	175	205	6	41							41		1040			7																1040						
"	"	"	8							30		30	6								6					8																152						
"	"	"	9							30		30	6								6					9																152						
Peter A. + Emma Storcha			10							30		30	6							6					10																		152					
"	"		11							30		30	6								6					11																	152					
"	"		12							30		30	6								6					12																	152					
"	"		13							30		30	6								6					13																	152					
"	"		14							30	335	365	6	72							72		1850			14																	1850					
"	"		15							30		30	6								6					15																	152					
"	"		16							30		30	6								6					16																	152					
Donald D. Blaisie + John M. Muller			17					No		30		303	6	101						101		2560	22		17																			2560	22			
John A. + Louise G. Spade			18					"		30		330	6	120						120		3042	28		18																				3042	28		
Care B. + Grace Taylor			19					"		30		351	6	127						127		3220	28		19																					3220	28	
M. + Marjorie Bonairs			20					No		30		30	6	10						10		254	02		20																					254	02	
Ernest + Mildred C. Hatkins										600	1464	2064	6	198	358						556		14094	80																						14094	80	
Robert C. Erickson																																																

BIRCHWOOD BEACHES

Flat of P.P.

Plat of P.P.

LEY TRAIL-DUCK PASS

(continued on next page)

Assessment Roll and Tax List of Real Property in the Town of Thunder Lake

Cass County, Minnesota, for Taxes for the Year 1952.

IN WHOSE NAME ASSESSED	TO WHOM TRANSFERRED	DESCRIPTION OF PROPERTY			No. School District	Indicate Homestead Yes or No	Indicate Agricultural Yes or No	TRUE AND FULL VALUATIONS				ASSESSED VALUATIONS					FINAL EQUALIZED VALUE				
		Subdivision	Sec. of Lot	Town or Block				Rng.	Number of Acres of Land	LAND Exclusive of Structures and Improvements	BUILDINGS and Other Structures	MACHINERY Permanently Attached to Real Estate	TOTAL True and Full Value	RURAL		ALL OTHER		MACHINERY Permanently Attached to Real Estate	TOTAL ASSESSED VALUE	Total Assessed Value as Equalized by the Board of Review	
														Acres	100ths	Homestead Up to \$4,000					Over \$4,000 and Non-Homestead
Carl D. Taylor & Grace F. Taylor		7 1/2	20	1	No		15		15	5				5							
Walter J. Johnson & Lillian Clark	Tomlin		21		Yes		30	175	205	41				41							
Sidney Olson			22		Yes		30	160	190	38				38							
"	"		23		"		30		30	6				6							
"	"		24		"		30		30	6				6							
R. L. & Mattie M. Brown, R.F. & Bernice Perry			25		"		30		30	6				6							
"	"		26		"		30		30	6				6							
"	"		27		Yes		60	480	540	108				108							
"	"		28		"		60		60	12				12							
Raymond O. & Robert N. Campbell			29		No		30		30	10				10							
"	"		30		No		30		30	10				10							
"	"		31		No		30		30	10				10							
Ellen L. Elliott			32		"		30		30	10				10							
"	"		33		"		30		30	10				10							
"	"		34		"		30		30	10				10							
"	"		35		"		30		30	10				10							
"	"		36		"		30		30	10				10							
State of Minnesota		Quilt																			
							555	815	1370	223	85			308							

SOLD FOR TAXES	VALUATIONS BY SCHOOL DISTRICTS AS EQUALIZED BY DEPARTMENT OF TAXATION						Tax Including State Homestead	State Tax on Non-Homestead	SPECIAL TAXES	TOTAL TAXES	PAID	WHEN PAID	Number of Receipt	March Settlement 1953	June Settlement 1953	November Settlement 1953	Penalty	Collections to First Monday in January 1954	Penalty	Delinquent on First Monday in January 1954	Total Delinquent Tax and Penalty	REMARKS
	District No.	District No.	District No.	District No.	District No.	District No.																
	Rate	Rate	Rate	Rate	Rate	Rate																
1						5	126		126	1	PAID IN FULL	MAY 29 1953	11533									
2						41	1040		1040	2	2nd Half Paid	JUL 15 1953	1184									
						38	964		964	3	1st Half Paid	MAY 1 9 1953	5305									
3						6	152		152	4	PAID IN FULL	APR 27 1953	5074									
4						6	152		152	5	PAID IN FULL	APR 27 1953										
5						6	152		152	6	PAID IN FULL	APR 29 1953										
6						6	152		152	7	PAID IN FULL	APR 29 1953										
7						108	2738		2738	8	PAID IN FULL	APR 29 1953	3880									
8						12	304		304	9	PAID IN FULL	APR 29 1953										
9						10	254	02	256	10	PAID IN FULL	MAY 29 1953										
10						10	254	02	256	11	PAID IN FULL	MAY 29 1953	11535									
11						10	254	02	256	12	PAID IN FULL	MAY 29 1953										
12						10	254	02	256	13												256x 282
13						10	254	02	256	14												256x 282
14						10	254	02	256	15												256x 282
15						10	254	02	256	16												256x 282
16						10	254	02	256	17												256x 282
17						10	254	02	256	18												256x 282
18										19												
19										20												
							7812	16	7828					6028	520							1280

OAK PARK BEACHES

BIRCHWOOD TERRACES

Plat of P.F.

Assessment Roll and Tax List of Real Property in the *Down* of *Thunder Lake*,

OAK PARK BEACHES

IN WHOSE NAME ASSESSED	TO WHOM TRANSFERRED	DESCRIPTION OF PROPERTY				TRUE AND FULL VALUATIONS										FINAL EQUALIZED VALUE
		SUBDIVISION	Sec. of Lot	Town or Block	Number of Acres of Land	No. of School District	Irrigation District	Machinery Permanently Attached to Real Estate	RURAL		ALL OTHER		Machinery Permanently Attached to Real Estate	TOTAL ASSESSED VALUE	Total Assessed Value as Equalized by the Board of Review	
									LAND		BUILDINGS and Other Structures					
		Acres	100ths	Dollars	Dollars	Dollars	Dollars	Homestead Up to \$4,000 20%	Over \$4,000 and Non-Homestead 33 1/3%	Homestead Up to \$4,000 25%	Over \$4,000 and Non-Homestead 40%	Dollars	Dollars	Dollars	Dollars	
<i>Charles A. Graham & Ada Graham</i>		<i>Oak Park Beaches</i>	<i>1</i>	<i>2</i>		<i>e-1 No</i>							<i>30</i>	<i>10</i>	<i>30</i>	<i>10</i>
"	"	"	<i>2</i>			"							<i>30</i>	<i>10</i>	<i>30</i>	<i>10</i>
"	"	"	<i>3</i>			"							<i>30</i>	<i>10</i>	<i>30</i>	<i>10</i>
"	"	"	<i>4</i>			"							<i>30</i>	<i>10</i>	<i>30</i>	<i>10</i>
"	"	"	<i>5</i>			"							<i>30</i>	<i>10</i>	<i>30</i>	<i>10</i>
"	"	"	<i>6</i>			"							<i>30</i>	<i>10</i>	<i>30</i>	<i>10</i>
"	"	"	<i>7</i>			"							<i>30</i>	<i>10</i>	<i>30</i>	<i>10</i>
"	"	"	<i>8</i>			"							<i>30</i>	<i>10</i>	<i>30</i>	<i>10</i>
"	"	"	<i>9</i>			"							<i>30</i>	<i>10</i>	<i>30</i>	<i>10</i>
"	"	"	<i>10</i>			"							<i>30</i>	<i>10</i>	<i>30</i>	<i>10</i>
<i>W. S. Cooper</i>			<i>11</i>			"							<i>30</i>	<i>10</i>	<i>30</i>	<i>10</i>
<i>Charles A. Graham & Ada Graham</i>			<i>12</i>			"							<i>30</i>	<i>10</i>	<i>30</i>	<i>10</i>
State of Minnesota		<i>Outlot</i>	<i>a</i>													
								<i>360</i>					<i>120</i>		<i>360</i>	<i>120</i>

Cass County, Minnesota, for Taxes for the Year 1952.

SOLD FOR TAXES	VALUATIONS BY SCHOOL DISTRICTS AS EQUALIZED BY DEPARTMENT OF TAXATION						Tax Including State Homestead	State Tax on Non-Homestead	SPECIAL TAXES	TOTAL TAXES	PAID	WHEN PAID	Number of Receipt	March Settlement 1953	June Settlement 1953	Penalty	November Settlement 1953	Penalty	Collections to First Monday in January 1954	Penalty	Delinquent on First Monday in January 1954	Total Delinquent Tax and Penalty	REMARKS
	District No.	District No.	District No.	District No.	District No.	District No.																	
	Rate	Rate	Rate	Rate	Rate	Rate																	
	Mills	Mills	Mills	Mills	Mills	Mills																	
	Dollars	Dollars	Dollars	Dollars	Dollars	\$ cts.	\$ cts.	\$ cts.	\$ cts.		Month Day Year		\$ cts.	\$ cts.	\$ cts.	\$ cts.	\$ cts.	\$ cts.	\$ cts.	\$ cts.	\$ cts.		
						<i>10</i>	<i>254</i>	<i>02</i>		<i>256</i>	<i>1</i>	<i>PAID IN FULL MAY 25 1953</i>											
						<i>10</i>	<i>254</i>	<i>02</i>		<i>256</i>	<i>2</i>	<i>PAID IN FULL MAY 25 1953</i>											
						<i>10</i>	<i>254</i>	<i>02</i>		<i>256</i>	<i>3</i>	<i>PAID IN FULL MAY 25 1953</i>											
						<i>10</i>	<i>254</i>	<i>02</i>		<i>256</i>	<i>4</i>	<i>PAID IN FULL MAY 25 1953</i>											
						<i>10</i>	<i>254</i>	<i>02</i>		<i>256</i>	<i>5</i>	<i>PAID IN FULL MAY 25 1953</i>											
						<i>10</i>	<i>254</i>	<i>02</i>		<i>256</i>	<i>6</i>	<i>PAID IN FULL MAY 25 1953</i>										<i>6619</i>	
						<i>10</i>	<i>254</i>	<i>02</i>		<i>256</i>	<i>7</i>	<i>PAID IN FULL MAY 25 1953</i>										<i>2560</i>	
						<i>10</i>	<i>254</i>	<i>02</i>		<i>256</i>	<i>8</i>	<i>PAID IN FULL MAY 25 1953</i>											
						<i>10</i>	<i>254</i>	<i>02</i>		<i>256</i>	<i>9</i>	<i>PAID IN FULL MAY 25 1953</i>											
						<i>10</i>	<i>254</i>	<i>02</i>		<i>256</i>	<i>10</i>	<i>PAID IN FULL MAY 25 1953</i>											
						<i>10</i>	<i>254</i>	<i>02</i>		<i>256</i>	<i>11</i>	<i>PAID IN FULL MAY 29 1953</i>	<i>7844</i>									<i>256</i>	
						<i>10</i>	<i>254</i>	<i>02</i>		<i>256</i>	<i>12</i>	<i>PAID IN FULL MAY 25 1953</i>	<i>6619</i>									<i>256</i>	

BIRCHWOOD PERIODE

Plat of P F

Assessment Roll and Tax List of Real Property in the Town of Dundas Lake

Cass County, Minnesota, for Taxes for the Year 1952.

IN WHOSE NAME ASSESSED	TO WHOM TRANSFERRED	DESCRIPTION OF PROPERTY				Number of Acres of Land	TRUE AND FULL VALUATIONS					ASSESSED VALUATIONS					FINAL EQUALIZED VALUE	
		SUBDIVISION	Sec or Lot	Town or Block	Reg.		LAND Exclusive of Structures and Improvements	BUILDINGS and Other Structures	MACHINERY Permanently Attached to Real Estate	TOTAL True and Full Value	RURAL		ALL OTHER		MACHINERY Permanently Attached to Real Estate	TOTAL ASSESSED VALUE		Total Assessed Value as Equalized by the Board of Review
											Homestead Up to \$4,000	Over \$4,000 and Non-Homestead 33 1/3%	Homestead Up to \$4,000	Over \$4,000 and Non-Homestead 40%				
											Dollars	Dollars	Dollars	Dollars				
<i>Wilfred E. Rumble</i>		<i>Cat Lake Beach</i>	<i>19</i>			<i>30</i>			<i>30</i>	<i>10</i>			<i>10</i>	<i>10</i>				
"	"		<i>20</i>			<i>30</i>			<i>30</i>	<i>10</i>			<i>10</i>	<i>10</i>				
"	"		<i>21</i>			<i>30</i>			<i>30</i>	<i>10</i>			<i>10</i>	<i>10</i>				
<i>Claude Fred Stone & Lillian P. Stone</i>			<i>22</i>			<i>30</i>			<i>30</i>	<i>10</i>			<i>10</i>	<i>10</i>				
"	"		<i>23</i>			<i>30</i>			<i>30</i>	<i>10</i>			<i>10</i>	<i>10</i>				
State of Minnesota		<i>Quitt</i>	<i>a</i>															
						<i>150</i>			<i>150</i>	<i>50</i>			<i>50</i>					

SOLD FOR TAXES	VALUATIONS BY SCHOOL DISTRICTS AS EQUALIZED BY DEPARTMENT OF TAXATION						Tax Including State Homestead	State Tax on Non-Homestead	SPECIAL TAXES	TOTAL TAXES	PAID	WHEN PAID	Number of Receipt	March Settlement 1953	June Settlement 1953	Penalty	November Settlement 1953	Penalty	Collections to First Monday in January 1954	Penalty	Delinquent on First Monday in January 1954	Total Delinquent Tax and Penalty	REMARKS	
	District No.	District No.	District No.	District No.	District No.	District No.																		
	Rate	Rate	Rate	Rate	Rate	Rate																		
	Mills	Mills	Mills	Mills	Mills	Mills																		
						<i>10</i>	<i>254</i>	<i>02</i>	<i>256</i>	<i>1</i>	<i>PAID IN FULL</i>	<i>MAY 29 1953</i>												
						<i>10</i>	<i>254</i>	<i>02</i>	<i>256</i>	<i>2</i>	<i>PAID IN FULL</i>	<i>MAY 29 1953</i>	<i>11540</i>											
						<i>10</i>	<i>254</i>	<i>02</i>	<i>256</i>	<i>3</i>	<i>PAID IN FULL</i>	<i>MAY 29 1953</i>												
						<i>10</i>	<i>254</i>	<i>02</i>	<i>256</i>	<i>4</i>	<i>PAID IN FULL</i>	<i>MAY 29 1953</i>	<i>11541</i>											
						<i>10</i>	<i>254</i>	<i>02</i>	<i>256</i>	<i>5</i>	<i>PAID IN FULL</i>	<i>MAY 29 1953</i>												
										<i>50</i>			<i>1270</i>	<i>10</i>	<i>1280</i>									

WAY TRAIL-DUCK PASS

OAK PARK BEACHES

BIRCHWOOD TERRACE

WAY POINT

PLAT OF P F 6

Assessment Roll and Tax List of Real Property in the Town of Thunder Lake

Cass County, Minnesota, for Taxes for the Year 1952.

Table with columns for property description, valuations, taxes, and payments. Includes entries for various owners like Einar & Stella C. Rosendahl, Carl C. & Gladys V. Hallquist, etc.

