

SYLVAN
1916

Auditor's Office, Cass County, Minnesota.

I, C. D. BACON, Auditor of Cass County, and
State of Minnesota, do hereby certify that the following is a correct list of the Taxes levied on the Real and Personal
Property in the town of Sylvan (L. S.)
for the year 1916.

WITNESS my hand and official seal this JAN 2 - 1917 day of 1917
C. D. Bacon County Auditor.

Treasurer's Office, Cass County, State of Minnesota.

RECEIVED this, the first Monday (being the second day) of January, A. D. 1917, of C. D. BACON,
Auditor of Cass County, Minnesota, the Tax List of all taxable Real and Personal Property in the town
of Sylvan in said County of Cass for the year A. D. 1916, as specified above and
amounting to seventy four hundred ninety 7 ⁴⁹/₁₀₀ Dollars.
W. J. McKeown
Treasurer of Cass County.

State of Minnesota,

Cass } ss.

County of

OFFICE OF COUNTY TREASURER

Walker, Minn. JAN 7 1918 191

To C. D. Bacon County Auditor:

Sir: I herewith return to you the Tax List for the town of Sylvan in said Cass County for the year 1916 heretofore received from you. I certify that I have compared the same with the duplicate receipts in your office, and have written opposite the amount of each tax so received the words "One Half Paid" or "Paid in Full" as the case may be, and the number of my receipt given in discharge of said Tax, and each tract or lot of Real Property against which the Taxes remain unpaid is delinquent for said year.

Yours respectfully,

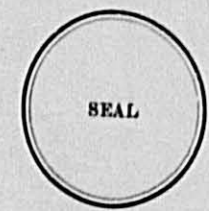
W. T. McKeown

County Treasurer.

Auditor's Office, Cass County, Minnesota

JAN 7 1918 191

I hereby certify that on this first Monday in January, 1918, I received of W. T. McKEOWN, County Treasurer, the Tax List of the town of Sylvan, in said County of Cass for the year 1916, and that I have compared the said list with the statements received for by said Treasurer, which are on file in my office, and that each tract or lot of real property therein against which the taxes, or any part thereof, remains unpaid are delinquent for said year.



C. D. Bacon

County Auditor.

Cass County, Minnesota, for Taxes of the Year 1916

Table with columns: SCHOOL DISTRICT (District No., District No., Rate, Mills), TOTAL TAXES (\$, Cts.), PAID, WHEN PAID (Month, Day, Year), No. of Receipt, March Settlement (\$, Cts.), June Settlement (\$, Cts.), Penalty (\$, Cts.), November Settlement (\$, Cts.), Penalty (\$, Cts.), Collections to First Monday in January (\$, Cts.), Penalty (\$, Cts.), Delinquent on First Monday in January (\$, Cts.), REMARKS.

Tax List of Real Property in the Town of Sylvan

Cass County, Minnesota, for Taxes of the Year 1916

IN WHOSE NAME ASSESSED	TO WHOM TRANSFERRED	Sold for Taxes	SUBDIVISION	Sec. or Lot	Town or Block	Reg.	No. of Acres		GENERAL TAXES			Ditch No.	SCHOOL DISTRICT		TOTAL TAXES	PAID	WHEN PAID	No. of Receipt	March Settlement	June Settlement	Penalty	November Settlement	Penalty	Collections to First Monday in January	Penalty	Delinquent on First Monday in January	REMARKS							
							Acres	100ths	State Sch'l	County	Town		Local Sch'l	Total														State School Bonds	District No.	District No.	Rate	Rate		
							Dollars		\$	Cts.	\$	Cts.	\$	Cts.	\$	Cts.	Month	Day	Year	\$	Cts.	\$	Cts.	\$	Cts.	\$	Cts.	\$	Cts.	\$	Cts.			
<i>Footings Brought Forward</i>																																		
C. J. Fredrickson	Cuyuna Range Power Co.		NE 1/4 of NE 1/4 Lot 1	4	13329	37	45	100	222		1060		13	1081	477	447																		
L. J. Anderson			NW 1/4 of NE 1/4 " 2			37	15	222			1060			1060	1060																1060	Judgement July 11-1921		
C. J. Fredrickson			SW 1/4 of NE 1/4			40		240			1145			1145	1145																			
Peter Staub			SE 1/4 of NE 1/4			40		109			539			539	539																			
M. J. Lynch			Lot 1, Sec 1/4 of Lot 1	5	13229	54	74	234			1081		13	1081	1081																	1500	Judgement July 11-1921	
"			NE 1/4 of NW 1/4	4	13329	35	50	98			467			467	467																			
"			NW 1/4 of NW 1/4			17	40	48			229			229	229																			
"			SW 1/4 of NW 1/4			40		240			1145			1145	1145																			
Cuyuna Range Power Co.			SE 1/4 of NW 1/4			40		240			1145			1145	1145																			
L. J. Anderson			8 acres of SW 1/4	"	"	"	"																											
Cuyuna Range Ore Co.			NE 1/4 of SW 1/4			40		161			768			768	768																			
"			NW 1/4 of SW 1/4			40		161			768			768	768																			
L. J. Anderson			SW 1/4 of SW 1/4			40		161			768			768	768																			
"			SE 1/4 of SW 1/4			40		240			1145			1145	1145																			
M. S. Jones			NE 1/4 of SE 1/4			40		161			768			768	768																			
L. J. Anderson			NW 1/4 of SE 1/4			40		342			1632			1632	1632																			
M. S. Jones			SW 1/4 of SE 1/4			40		161			768			768	768																			
"			SE 1/4 of SE 1/4			40		113			539			539	539																			
							66224	3157	15027																									
<i>Footings Carried Forward</i>																																		
													1081	13946	15027																			

Tax List of Real Property in the Town of Sylvan

Cass County, Minnesota, for Taxes of the Year 1916

IN WHOSE NAME ASSESSED	TO WHOM TRANSFERRED	Sold for Taxes	SUBDIVISION	Sec. or Lot	Town or Block	Rng.	No. of Acres		VALUATION	GENERAL TAXES				SCHOOL DISTRICT				TOTAL TAXES	PAID	WHEN PAID	No. of Receipt	March Settlement	June Settlement	Penalty	November Settlement	Penalty	Collections to First Monday in January	Penalty	Delinquent on First Monday in January	REMARKS					
							Acres	100ths		Mills		Ditch		District																					
										State	County	State	School	No.	No.	Rate	Rate														\$	Cts.	\$	Cts.	\$
<i>Footings Brought Forward</i>																																			
Hans Christian Jensen			NE 1/4 of NE 1/4	6	133	29	36	63	144	687																									
"			NW 1/4 of NE 1/4				37	78	118	562																									
Sarah A. Gardner			SW 1/4 of NE 1/4				40		128	610																									
"			SE 1/4 of NE 1/4				40		128	610																									
William H. Smith			NE 1/4 of NW 1/4				36	31	144	687																									
"			NW 1/4 of NW 1/4				36	14	144	687																									
Mary Smith			SW 1/4 of NW 1/4				40	161	768	768																									
Wm. H. Smith			SE 1/4 of NW 1/4				40		161	768																									
Aug. Sather			NE 1/4 of SW 1/4				40		240	1144																									
"			NW 1/4 of SW 1/4				40		288	1374																									
"			SW 1/4 of SW 1/4				40		240	1144																									
"			SE 1/4 of SW 1/4				40		161	768																									
Sarah A. Gardner			NE 1/4 of SE 1/4				40		161	768																									
"			NW 1/4 of SE 1/4				40		240	1144																									
"			SW 1/4 of SE 1/4				40		128	610																									
"			SE 1/4 of SE 1/4				40		161	768																									
<i>Footings Carried Forward</i>																																			

210 1/2 Paid MAY 24 1917 } 9508
 210 1/2 Paid OCT 27 1917 }
 210 1/2 Paid MAY 24 1917 } 4680
 Paid 1324
 610 Paid subsequent to Cert. No. 4817
 Paid 1324
 610 Paid subsequent to Cert. No. 4818

2nd Half Paid OCT 20 1917 }
 1st Half Paid OCT 20 1917 } 9321
 2nd Half Paid OCT 20 1917 }
 1st Half Paid MAY 24 1917 } 3775
 2nd Half Paid OCT 20 1917 }
 1st Half Paid OCT 20 1917 }
 2nd Half Paid OCT 20 1917 }

Paid 1326
 768 Paid subsequent to Cert. No. 4819
 Paid 1144
 1144 Paid subsequent to Cert. No. 4820
 Paid 610
 610 Paid subsequent to Cert. No. 4821
 Paid 768
 768 Paid subsequent to Cert. No. 4822

624 ✓ 625 ✓

2215 ✓ 2215 ✓

700 6987
700 6988

687

768
768

882 6989
1314 6990

700 6991
882 6992

13099

Tax List of Real Property in the Town of Sylvan

Cass County, Minnesota, for Taxes of the Year 1916

IN WHOSE NAME ASSESSED	TO WHOM TRANSFERRED	Sold for Taxes	SUBDIVISION	Sec. or Lot	Town or Block	No. of Acres		VALUATION	GENERAL TAXES				Ditch No.	SCHOOL DISTRICT		TOTAL TAXES	PAID	WHEN PAID	No. of Receipt	March Settlement	June Settlement	Penalty	November Settlement	Penalty	Collections to First Monday in January	Penalty	Delinquent on First Monday in January	REMARKS	
						Acres	100ths		Mills					District No.	District No.														
									State	County	Town	Local Sch'l		State	School														Bonds
<i>Footings Brought Forward</i>																													
Christ Haette			NE 1/4 of NE 1/4	7	133 29	40	240	1145																					
"			NW 1/4 of NE 1/4			40	357	1689																					
"			SW 1/4 of NE 1/4			40	210	1145																					
"			SE 1/4 of NE 1/4			40	240	1145																					
Aug. Sather			NE 1/4 of NW 1/4			40	456	2176																					
"			NW 1/4 of NW 1/4 Lot 1			40 72	326	1555																					
Frank O. Anderson			SW 1/4 of NW 1/4 " 2			40 69	456	2176																					
"			SE 1/4 of NW 1/4			40	320	1526																					
"			NE 1/4 of SW 1/4			40	161	768																					
"			NW 1/4 of SW 1/4 " 3			40 64	161	768																					
"			SW 1/4 of SW 1/4 " 4			40 62	161	768																					
"			SE 1/4 of SW 1/4			40	320	1526																					
Thos. H. Beighley			NE 1/4 of SE 1/4			40	192	916																					
"			NW 1/4 of SE 1/4			40	192	916																					
"			SW 1/4 of SE 1/4			40	240	1145																					
"			SE 1/4 of SE 1/4			40	192	916																					
<i>Footings Carried Forward</i>																													
						642 67	4251	20280																					

2nd Half Paid OCT 31 1917
 1145 1st Half Paid MAY 1 1917 } 10389
 1689 2nd Half Paid OCT 31 1917 }
 1145 1st Half Paid MAY 1 1917 } 3607
 1145 2nd Half Paid OCT 31 1917 }
 1145 1st Half Paid MAY 1 1917 }
 1145 2nd Half Paid OCT 31 1917 }
 1145 1st Half Paid MAY 1 1917 }
 2176 1st Half Paid MAY 14 1917 }
 1555 2nd Half Paid OCT 29 1917 } 9321
 2176 1st Half Paid MAY 31 1917 } 3775
 1526 2nd Half Paid OCT 29 1917 } 9601
 1526 1st Half Paid MAY 31 1917 } 6300
 768 2nd Half Paid OCT 29 1917 }
 768 1st Half Paid MAY 31 1917 } 9601
 768 2nd Half Paid OCT 29 1917 } 6300
 768 1st Half Paid MAY 31 1917 }
 1526 2nd Half Paid OCT 29 1917 }
 1526 1st Half Paid MAY 31 1917 }
 916 Paid in Full MAY 30 1917 }
 916 Paid in Full MAY 30 1917 } 5412
 1145 Paid in Full MAY 30 1917 }
 916 Paid in Full MAY 30 1917 } 3893

2562 ✓ 2562 ✓
 1865 ✓ 1866 ✓
 1851 ✓ 1851 ✓
 1915 ✓ 1915 ✓
 3893 ✓

20280

Tax List of Real Property in the Town of Sylvan

Cass County, Minnesota, for Taxes of the Year 1916

IN WHOSE NAME ASSESSED	TO WHOM TRANSFERRED	Sold for Taxes	SUBDIVISION	Sec. or Lot	Town or Block	No. of Acres	VALUATION	GENERAL TAXES			Ditch No.	SCHOOL DISTRICT		TOTAL TAXES	PAID	WHEN PAID	No. of Receipt	March Settlement	June Settlement	Penalty	November Settlement	Penalty	Collections to First Monday in January	Penalty	Delinquent on First Monday in January	REMARKS
								Mills		State School Bonds		District No.	District Rate													
								State Sch. 1	State Sch. 2																	
<i>Footings Brought Forward</i>																										
Geo. Sively			NE 1/4 of NE 1/4	18	33	29	136	1260	60	10				6010	2nd Half Paid OCT 23 1917	9058										
"			NW 1/4 of NE 1/4												1st Half Paid MAY 17 1917	3981		3005		3005						
"			SW 1/4 of NE 1/4																							
"			SE 1/4 of NE 1/4																							
Geo. A. Sively			NE 1/4 of NW 1/4			40	161	768						768	2nd Half Paid OCT 22 1917	9058										
"			NW 1/4 of NW 1/4			40	240	1145						1145	1st Half Paid MAY 17 1917	3981		957		957						
Geo. A. Sively	George A. Sively		SW 1/4 of NW 1/4			40	234	1068						1068	paid in full FEB 19 1917	939	1068									
Geo. A. Sively			SE 1/4 of NW 1/4			40	234	1068						1068	2nd Half Paid OCT 22 1917	9058		534		534						
"			NE 1/4 of SW 1/4			40	320	1526						1526	2nd Half Paid OCT 22 1917	9058										
"			NW 1/4 of SW 1/4			40	320	1526						1526	1st Half Paid MAY 17 1917	3981		1526		1526						
Geo. A. Sively	George A. Sively		SW 1/4 of SW 1/4			40	320	1526						1526	paid in full FEB 19 1917	939	1526									
Geo. A. Sively			SE 1/4 of SW 1/4			40	161	768						768	2nd Half Paid OCT 22 1917	9058		384		384						
"			NE 1/4 of SE 1/4			40	320	1526						1526	2nd Half Paid OCT 22 1917	9058										
"			NW 1/4 of SE 1/4			40	320	1526						1526	1st Half Paid MAY 17 1917	3981		2289		2289						
"			SW 1/4 of SE 1/4			40	320	1526						1526	2nd Half Paid OCT 22 1917	9058										
Cuyuna Range Power Co.			SE 1/4 of SE 1/4			40	320	1526						1526	1st Half Paid MAY 31 1917	6140		763		763						
<i>Footings Carried Forward</i>																										

Tax List of Real Property in the Town of Sylan

Cass County, Minnesota, for Taxes of the Year 1916

IN WHOSE NAME ASSESSED	TO WHOM TRANSFERRED	Sold for Taxes	SUBDIVISION	Sec. or Lot	Town or Block	Reg.	No. of Acres		GENERAL TAXES				SCHOOL DISTRICT				TOTAL TAXES	PAID	WHEN PAID			No. of Receipt	March Settlement	June Settlement	Penalty	November Settlement	Penalty	Collections to First Monday in January	Penalty	Delinquent on First Monday in January	REMARKS							
							Acres	100ths	Mills				District		Month Day Year																							
							Dollars		\$	Cts.	\$	Cts.	\$	Cts.	\$	Cts.			\$	Cts.	\$											Cts.	\$	Cts.	\$	Cts.	\$	Cts.
<i>Footings Brought Forward</i>																																						
Cuyuna Range Power Co.			NE 1/4 of NE 1/4	19	33	29	40	240	1145				1	1145	1145		2nd Half Paid OCT 31 1917																					
"			NW 1/4 of NE 1/4				40	240	1145					1145	1145		1st Half Paid MAY 31 1917																					
"			SW 1/4 of NE 1/4				40	240	1109				13	1109	1109		2nd Half Paid OCT 31 1917																					
"			SE 1/4 of NE 1/4				40	240	1109					1109	1109		1st Half Paid MAY 31 1917																					
"			NE 1/4 of NW 1/4				40	240	1145				1	1145	1145		2nd Half Paid OCT 31 1917																					
"			NW 1/4 of NW 1/4 Lot 1				42	11	252	1203				1203	1203		1st Half Paid MAY 31 1917																					
Geo H Gardner			SW 1/4 of NW 1/4 " 2				41	87	246	1174				1174	1174		2nd Half Paid OCT 31 1917																					
"			SE 1/4 of NW 1/4 less 10 acres				30	276	1317					1317	1317		1st Half Paid MAY 31 1917																					
Cuyuna Range Power Co.			10 acres of SE 1/4 NW 1/4				10	60	277				13	277	277		2nd Half Paid OCT 31 1917																					
"			NE 1/4 of SW 1/4				40	240	1109				13	1109	1109		1st Half Paid MAY 31 1917																					
Geo H Gardner			NW 1/4 of SW 1/4 Lot 3				41	65	246	1137				1137	1137		2nd Half Paid OCT 31 1917																					
Cuyuna Range Power Co.			SW 1/4 of SW 1/4 " 4				42	07	252	1164				1164	1164		1st Half Paid MAY 31 1917																					
"			SE 1/4 of SW 1/4				40	240	1109					1109	1109		2nd Half Paid OCT 31 1917																					
D.M. Cameron			NE 1/4 of SE 1/4				40	240	1109					1109	1109		2nd Half Paid OCT 31 1917																					
Cuyuna Range Power Co.			NW 1/4 of SE 1/4				40	240	1109					1109	1109		1st Half Paid MAY 31 1917																					
D.M. Cameron			SW 1/4 of SE 1/4				40	240	1109					1109	1109		2nd Half Paid OCT 31 1917																					
"			SE 1/4 of SE 1/4				40	240	1109					1109	1109		1st Half Paid MAY 31 1917																					
<i>Footings Carried Forward</i>																																						
							64773	3972	18579					11450	7129	18579																						

Tax List of Real Property in the Town of Sylvan

Cass County, Minnesota, for Taxes of the Year 1916

IN WHOSE NAME ASSESSED	TO WHOM TRANSFERRED	Sold for Taxes	SUBDIVISION	Sec. or Lot	Town or Block	Reg.	No. of Acres		VALUATION	GENERAL TAXES			Ditch No.	SCHOOL DISTRICT		TOTAL TAXES	PAID	WHEN PAID	No. of Receipt	March Settlement	June Settlement	Penalty	November Settlement	Penalty	Collections to First Monday in January	Penalty	Delinquent on First Monday in January	REMARKS
							Acres	100ths		State Mills	County Mills	Local Sch'l Mills		Total Mills	State School Bonds													
<i>Footings Brought Forward</i>																												
<i>Cuyuna Range Power Co</i>			NE 1/4 of NE 1/4	20	133	29	40	240	1145				1	1145	1145	1145	2nd Half Paid OCT 31 1917 1st Half Paid MAY 31 1917	10680										
"			NW 1/4 of NE 1/4				40	240	1145				"	1145	1145	1145	2nd Half Paid OCT 31 1917 1st Half Paid MAY 31 1917		1145		1145							
"			SW 1/4 of NE 1/4				40	240	1109				13	1109	1109	1109	2nd Half Paid OCT 31 1917 1st Half Paid MAY 31 1917	10681		1109		1109						
"			SE 1/4 of NE 1/4				40	240	1109				"	1109	1109	1109	2nd Half Paid OCT 31 1917 1st Half Paid MAY 31 1917											
"			NE 1/4 of NW 1/4				40	240	1145				"	1145	1145	1145	2nd Half Paid OCT 31 1917 1st Half Paid MAY 31 1917	6141										
"			NW 1/4 of NW 1/4				40	240	1145				"	1145	1145	1145	2nd Half Paid OCT 31 1917 1st Half Paid MAY 31 1917	10680		1145		1145						
"			SW 1/4 of NW 1/4				40	240	1109				13	1109	1109	1109	2nd Half Paid OCT 31 1917 1st Half Paid MAY 31 1917	10681		1109		1109						
"			SE 1/4 of NW 1/4				40	240	1109				"	1109	1109	1109	2nd Half Paid OCT 31 1917 1st Half Paid MAY 31 1917											
<i>Daniel Beery 1/2 J. H. Crosswell 1/2</i>			NE 1/4 of SW 1/4				40	240	1109				"	1109	1109	1109	2nd Half Paid OCT 31 1917 1st Half Paid MAY 31 1917											
"			NW 1/4 of SW 1/4				40	240	1109				"	1109	1109	1109	2nd Half Paid OCT 31 1917 1st Half Paid MAY 31 1917	10681		2218		2218						
"			SW 1/4 of SW 1/4				40	240	1109				"	1109	1109	1109	2nd Half Paid OCT 31 1917 1st Half Paid MAY 31 1917	6141										
"			SE 1/4 of SW 1/4				40	240	1109				"	1109	1109	1109	2nd Half Paid OCT 31 1917 1st Half Paid MAY 31 1917											
<i>Whitemarsh Mining Co</i>			NE 1/4 of SE 1/4				40	240	1109				"	1109	1109	1109	1109 Paid in Full MAY 31 1917											
"			NW 1/4 of SE 1/4				40	240	1109				"	1109	1109	1109	1109 Paid in Full MAY 31 1917			4426								
"			SW 1/4 of SE 1/4				40	240	1109				"	1109	1109	1109	1109 Paid in Full MAY 31 1917											
"			SE 1/4 of SE 1/4				40	240	1109				"	1109	1109	1109	1109 Paid in Full MAY 31 1917											
<i>Footings Carried Forward</i>																												
							640	3840	17888					13308	4580	17888												

Tax List of Real Property in the Town of Sylvan

Cass County, Minnesota, for Taxes of the Year 1916

IN WHOSE NAME ASSESSED	TO WHOM TRANSFERRED	Sold for Taxes	SUBDIVISION	Sec. or Lot	Town or Block	Reg.	No. of Acres		VALUATION	GENERAL TAXES			Ditch No.	SCHOOL DISTRICT		TOTAL TAXES	PAID	WHEN PAID	No. of Receipt	March Settlement	June Settlement	Penalty	November Settlement	Penalty	Collections to First Monday in January	Penalty	Delinquent on First Monday in January	REMARKS				
							Acres	100ths		State	County	Local		Total	Mills														District No.	District No.	Rate	Rate
									Dollars	\$	Cts.	\$	Cts.	\$	Cts.	\$	Cts.	Month	Day	Year	\$	Cts.	\$	Cts.	\$	Cts.	\$	Cts.	\$	Cts.	\$	Cts.
<i>Footings Brought Forward</i>																																
Roy R. Leverington			NE 1/4 of NE 1/4	21	133	29	40	240	1145				1	1145	1145	Paid in Full	APR 23 1917															
"			NW 1/4 of NE 1/4				40	240	1145				"	1145	1145	Paid in Full	APR 23 1917	3027			2290	✓										
"			SW 1/4 of NE 1/4				40	240	1109				13	1109	1109	Paid in Full	APR 23 1917															
"			SE 1/4 of NE 1/4				40	240	1109				"	1109	1109	Paid in Full	APR 23 1917	3028			2218	✓										
"			NE 1/4 of NW 1/4				40	240	1145				1	1145	1145	Paid in Full	APR 23 1917	3027			1145	✓										
Cuyuna Range Power Co			NW 1/4 of NW 1/4				40	240	1145				"	1145	1145	2nd Half Paid	OCT 31 1917	10680			573		572	✓								
"			SW 1/4 of NW 1/4				40	240	1109				13	1109	1109	2nd Half Paid	OCT 31 1917	10681			554	✓	553	✓								
Roy Leverington			SE 1/4 of NW 1/4				40	240	1109				"	1109	1109	Paid in Full	APR 23 1917	3028			1109	✓										
"			NE 1/4 of SW 1/4				40	240	1109				13	1109	1109	Paid in Full	APR 23 1917	3028			1109	✓										
Cuyuna Range Power Co			NW 1/4 of SW 1/4				40	240	1109				"	1109	1109	2nd Half Paid	OCT 31 1917	10681			1663	✓	1664	✓								
"			SW 1/4 of SW 1/4				40	240	1109				"	1109	1109	2nd Half Paid	OCT 31 1917	10681														
"			SE 1/4 of SW 1/4				40	240	1109				"	1109	1109	2nd Half Paid	OCT 31 1917	10681														
Roy R. Leverington			NE 1/4 of SE 1/4				40	240	1109				"	1109	1109	Paid in Full	APR 23 1917	3028														
"			NW 1/4 of SE 1/4				40	240	1109				"	1109	1109	Paid in Full	APR 23 1917	3028			2218	✓										
Cuyuna Range Power Co			SW 1/4 of SE 1/4				40	240	1109				"	1109	1109	2nd Half Paid	OCT 31 1917	10681			555	✓	554	✓								
et al. & Katherine W. Bennett			SE 1/4 of SE 1/4				40	240	1109				"	1109	1109	Paid in Full	FEB 9 - 1917	624			1109	✓										
							640	3840	17888					13308	4580	17888																
<i>Footings Carried Forward</i>																																

Tax List of Real Property in the Town of Sylvan

Cass County, Minnesota, for Taxes of the Year 1916

IN WHOSE NAME ASSESSED	TO WHOM TRANSFERRED	Sold for Taxes	SUBDIVISION	Sec. or Lot	Town or Block	No. of Acres	VALUATION	GENERAL TAXES			Ditch No.	SCHOOL DISTRICT		TOTAL TAXES	PAID	WHEN PAID	No. of Receipt	March Settlement	June Settlement	Penalty	November Settlement	Penalty	Collections to First Monday in January	Penalty	Delinquent on First Monday in January	REMARKS				
								State Mills	State Sch'l	State School Bonds		District No.	District Rate																	
							Dollars	¢	Cts.	¢	Cts.	¢	Cts.	¢	Cts.	Month	Day	Year	¢	Cts.	¢	Cts.	¢	Cts.	¢	Cts.	¢	Cts.		
<i>Footings Brought Forward</i>																														
S. Hardy			NE 1/4 of NE 1/4	29	33	29	40	240	1109																					
Geo Kemp			NW 1/4 of NE 1/4			40	489	2107																						
"			SW 1/4 of NE 1/4			40	240	1109																						
C. J. Fredrickson			SE 1/4 of NE 1/4			40	240	1109																						
a. J. Crathers	1/4 Int of J. C. Sweet		NE 1/4 of NW 1/4			40	161	744																						
"	"		NW 1/4 of NW 1/4			40	240	1109																						
"	"		SW 1/4 of NW 1/4			40	161	744																						
"	"		SE 1/4 of NW 1/4			40	240	1109																						
Peter Yde			NE 1/4 of SW 1/4			33	50	138	619																					
"			NW 1/4 of SW 1/4			44	85	178	822																					
"			SW 1/4 of SW 1/4																											
"			SE 1/4 of SW 1/4																											
"			NE 1/4 of SE 1/4			40	161	744																						
"			NW 1/4 of SE 1/4	Lot 5		42	40	170	785																					
"			SW 1/4 of SE 1/4																											
"			SE 1/4 of SE 1/4	1		22	10	161	744																					
						50	285	2782	12854																					
						<i>Footings Carried Forward</i>																								

1109 Paid subsequent to Cert. No. 4821
 2107 1st Half Paid MAY 31 1917 } 11142
 1109 1st Half Paid MAY 31 1917 } 3917
 1109

744 Paid in Full MAY 17 1917
 1109 Paid in Full MAY 17 1917 } 4006
 744 Paid in Full MAY 17 1917
 1109 Paid in Full MAY 17 1917 }
 3906

619 Paid in Full MAY 24 1917
 822 Paid in Full MAY 24 1917 } 4743
 1441

744 Paid in Full MAY 24 1917
 785 Paid in Full MAY 24 1917 } 4743
 2273

744 Paid in Full MAY 24 1917

1274 694
 1608
 1608 161
 1109 Judgement July 11, 1921

Tax List of Real Property in the Town of Sylan

Cass County, Minnesota, for Taxes of the Year 1916

IN WHOSE NAME ASSESSED	TO WHOM TRANSFERRED	Sold for Taxes	SUBDIVISION	Sec. or Lot	Town or Block	No. of Acres		VALUATION	GENERAL TAXES			Ditch No.	SCHOOL DISTRICT		TOTAL TAXES	PAID	WHEN PAID	No. of Receipt	March Settlement	June Settlement	Penalty	November Settlement	Penalty	Collections to First Monday in January	Penalty	Delinquent on First Monday in January	REMARKS										
						Acres	100ths		State	County	Town		Local Sch'l	Total														State	School	Bonds	District No.	District No.	Rate	Rate			
								Dollars	\$	Cts.	\$	Cts.	\$	Cts.	\$	Cts.	\$	Cts.	\$	Cts.	\$	Cts.	\$	Cts.	\$	Cts.	\$	Cts.	\$	Cts.	\$	Cts.	\$	Cts.			
<i>Footings Brought Forward</i>																																					
Wm. A. Clark			NE 1/4 of NE 1/4 Lot 1	33	133 29	30	25	96	444						444	Paid in Full	MAY 31 1917	6889																			
A. J. Crothers 3/4 int. John C. Sweet 1/4 int.			NW 1/4 of NE 1/4 " 2			14	85	44	203						203	Paid in Full	MAY 17 1917	4006																			
Wm. A. Clark			SW 1/4 of NE 1/4 " 6			41	60	128	591						591	Paid in Full	MAY 31 1917	6889																			
Ole Peterson			SE 1/4 of NE 1/4 " 7			35	85	113	522						522	1st Half Paid MAY 28 1917	10502																				
"			NE 1/4 of NW 1/4 " 8			40		240	1109						1109	2nd Half Paid OCT 31 1917																					
"			NW 1/4 of NW 1/4 " 3			39	75	320	1478						1478	1st Half Paid MAY 28 1917	5262																				
"			SW 1/4 of NW 1/4 " 5			56	30	910	3742						3742	1st Half Paid MAY 28 1917	5262																				
"			SE 1/4 of NW 1/4 " 5			56	30	810	3742						3742	2nd Half Paid OCT 31 1917	10502																				
Wm. A. Clark			NE 1/4 of SW 1/4 " 9			39	75	186	721						721	Paid in Full	MAY 31 1917	6889																			
"			NW 1/4 of SW 1/4 " 10			38	90	152	762						702	Paid in Full	MAY 31 1917	6889																			
"			SW 1/4 of SW 1/4 " 10			38	90	152	762						702	Paid in Full	MAY 31 1917	6889																			
"			SE 1/4 of SW 1/4 " 10			38	90	152	762						702	Paid in Full	MAY 31 1917	6889																			
C. E. Griffith			NE 1/4 of SE 1/4 " 8			17	35	68	314						314	Paid in Full	MAY 31 1917	6889																			
Wm. A. Clark			NW 1/4 of SE 1/4 " 11			40		161	744						744	Paid subsequent to Cert. No. 1609																					
"			SW 1/4 of SE 1/4 " 11			25	50	101	467						467	Paid in Full	MAY 31 1917	6889																			
"			SE 1/4 of SE 1/4 " 12			18	75	72	333						333	Paid in Full	MAY 31 1917	6889																			
<i>Footings Carried Forward</i>																																					
						438	85	2461	11370				11370																								

Tax List of Real Property in the Town of Sylvan

Cass County, Minnesota, for Taxes of the Year 1916

IN WHOSE NAME ASSESSED	TO WHOM TRANSFERRED	Sold for Taxes	SUBDIVISION	Sec. or Lot	Town or Block	No. of Acres	VALUATION	GENERAL TAXES			Ditch No.	SCHOOL DISTRICT		TOTAL TAXES	PAID	WHEN PAID	No. of Receipt	March Settlement	June Settlement	Penalty	November Settlement	Penalty	Collections to First Monday in January	Penalty	Delinquent on First Monday in January	REMARKS
								Mills		State School Bonds		District No.	District Rate													
								State Sch'l.	County Sch'l.																	
<i>Footings Brought Forward</i>																										
Wm. H. Smith			NE 1/4 of NE 1/4			1.43330																				
"			NW 1/4 of NE 1/4 Lot 2			40.50	97	463																		
"			SW 1/4 of NE 1/4 " 3			45	108	515																		
Adolph Hagen & John Hagen	1/2 int		SE 1/4 of NE 1/4 Lot 1			38.95	92	439																		
Alvin O. Johnson	1/3 int		NE 1/4 of NW 1/4																							
			NW 1/4 of NW 1/4 " 1			55.50	133	634																		
			SW 1/4 of NW 1/4																							
			SE 1/4 of NW 1/4																							
Halmer A. Suman & Clarence B. Suman	1/6		lot 1																							
William H. Smith			NE 1/4 of SW 1/4 " 5			39.10	90	429																		
"			NW 1/4 of SW 1/4																							
"			SW 1/4 of SW 1/4 " 6			51	120	572																		
"			SE 1/4 of SW 1/4																							
"			NE 1/4 of SE 1/4			40	96	458																		
"			NW 1/4 of SE 1/4			40	96	458																		
"			SW 1/4 of SE 1/4			40	96	458																		
"			SE 1/4 of SE 1/4			40	96	458																		
<i>Footings Carried Forward</i>																										

Tax List of Real Property in the Town of Sylvan

Cass County, Minnesota, for Taxes of the Year 1916

IN WHOSE NAME ASSESSED	TO WHOM TRANSFERRED	Sold for Taxes	SUBDIVISION	Sec. or Lot	Town or Block	No. of Acres		VALUATION	GENERAL TAXES			Ditch No.	SCHOOL DISTRICT		TOTAL TAXES	PAID	WHEN PAID	No. of Receipt	March Settlement	June Settlement	Penalty	November Settlement	Penalty	Collections to First Monday in January	Penalty	Delinquent on First Monday in January	REMARKS				
						Acres	100ths		State	County	Town		Local Sch'l	Total														State	School	Bonds	District No.
<i>Footings Brought Forward</i>																															
Martin Westfall			NE 1/4 of NE 1/4	Lot 1	2	13330	3988	161	768																						
"			NW 1/4 of NE 1/4	" 2			3963	161	768																						
"			SW 1/4 of NE 1/4				40	161	768																						
"			SE 1/4 of NE 1/4				40	161	768																						
Peter J. J. J.			NE 1/4 of NW 1/4	" 3			3937	176	840																						
"			NW 1/4 of NW 1/4	" 4			3912	161	768																						
"			SW 1/4 of NW 1/4				40	113	539																						
"			SE 1/4 of NW 1/4				40	113	539																						
E. J. Moore			NE 1/4 of SW 1/4	" 6			34	161	768																						
"			NW 1/4 of SW 1/4				40	240	1145																						
"			SW 1/4 of SW 1/4	" 5			4525	180	838																						
"			SE 1/4 of SW 1/4																												
Allie Goffney			NE 1/4 of SE 1/4	" 8			3560	142	678																						
"			NW 1/4 of SE 1/4	" 7			47	192	916																						
"			SW 1/4 of SE 1/4																												
"			SE 1/4 of SE 1/4																												
<i>Footings Carried Forward</i>																															
							51985	2122	10123																						

768 Paid in full FEB 19 1917
 768 Paid in full FEB 19 1917
 768 Paid in full FEB 19 1917
 768 Paid in full FEB 19 1917

840 Paid in full MAY 24 1917
 768 Paid in full MAY 24 1917
 539 Paid in full MAY 24 1917
 539 Paid in full MAY 24 1917

768 Paid in full MAY 22 1917
 1145 Paid in full MAY 22 1917
 858 Paid in full MAY 22 1917

2nd Half Paid OCT 31 1917
 678 1st Half Paid MAY 31 1917
 2nd Half Paid OCT 31 1917
 916 1st Half Paid MAY 31 1917

964 3072 ✓

4742 2686 ✓

4525 2771 ✓

9949 6348
 797 ✓ 797 ✓

10123

Tax List of Real Property in the Town of Sylvan

Cass County, Minnesota, for Taxes of the Year 1916

IN WHOSE NAME ASSESSED	TO WHOM TRANSFERRED	Sold for Taxes	SUBDIVISION	Sec. or Lot	Town or Block	No. of Acres	VALUATION	GENERAL TAXES		Ditch No.	SCHOOL DISTRICT		TOTAL TAXES	PAID	WHEN PAID	No. of Receipt	March Settlement	June Settlement	Penalty	November Settlement	Penalty	Collections to First Monday in January	Penalty	Delinquent on First Monday in January	REMARKS	
								Mills	\$ Cts.		District No.	District Rate														\$
<i>Footings Brought Forward</i>																										
<i>Wm. Rogers</i>	<i>The Brainerd State Bank, a corp.</i>		<i>Mary Sandse</i>	NE 1/4 of NE 1/4	<i>Lot 1</i>	13330	3960	200	954	211			1165		<i>PAID in Full MAY 25 1917</i>	5035										
<i>E.M. Hogan</i>	"		"	NW 1/4 of NE 1/4	" 2		3959	224	1068	211			1279		<i>Paid subsequent to Cert. No. 1623</i>											
<i>Wm. Rogers</i>	"		<i>Mary Sandse</i>	SW 1/4 of NE 1/4	"		40	240	1145	224			1369		<i>PAID in Full MAY 25 1917</i>											
"	"		"	SE 1/4 of NE 1/4	"		40	161	768	224			992		<i>PAID in Full MAY 25 1917</i>	5035										
<i>E.M. Hogan</i>	"		"	NE 1/4 of NW 1/4	" 3		3958	150	716	245			961		<i>Paid subsequent to Cert. No. 1616</i>											
"	"		"	NW 1/4 of NW 1/4	" 4		17	68	324	111			433		<i>Paid subsequent to Cert. No. 1617</i>											
"	"		"	SW 1/4 of NW 1/4	" 5		3850	153	730	251			981		<i>Paid subsequent to Cert. No. 1618</i>											
"	"		"	SE 1/4 of NW 1/4	"		40	240	1145	281			1426		<i>Paid subsequent to Cert. No. 1619</i>											
"	"		"	NE 1/4 of SW 1/4	"		40	240	1145	281			1426		<i>Paid subsequent to Cert. No. 1620</i>											
<i>John A. Berglund</i>	"		"	NW 1/4 of SW 1/4	"		40	161	768	281			1049		<i>Paid subsequent to Cert. No. 1621</i>											
<i>Frank Swanson</i>	"		"	SW 1/4 of SW 1/4	"		40	161	768	281			1049		<i>60/4</i>											
"	"		"	SE 1/4 of SW 1/4	"		40	161	768	281			1049		<i>2nd Half Paid OCT 31 1917 985</i>											
"	"		"	NE 1/4 of SE 1/4	"		40	161	768	224			992		<i>1st Half Paid APR 25 1917 3069</i>											
<i>L.M. Randall</i>	"		"	NW 1/4 of SE 1/4	"		40	410	1936	224			2180		<i>2nd Half Paid OCT 31 1917 1022</i>											
<i>Wm. Rogers</i>	<i>The Brainerd State Bank, a corp.</i>		<i>Mary Sandse</i>	SW 1/4 of SE 1/4	"		40	308	1469	224			167		<i>1st Half Paid APR 25 1917 3069</i>											
<i>Frank Swanson</i>	"		"	SE 1/4 of SE 1/4	"		40	320	1526	224			1750		<i>2nd Half Paid OCT 31 1917 1022</i>											
<i>L.M. Randall</i>	"		"												<i>1st Half Paid MAY 31 1917 6394</i>											
<i>Footings Carried Forward</i>																										
						60827	8358	16018	3778				19796													

Tax List of Real Property in the Town of Sylvan

Cass County, Minnesota, for Taxes of the Year 1916

IN WHOSE NAME ASSESSED	TO WHOM TRANSFERRED	Sold for Taxes	SUBDIVISION	Sec. or Lot	Town or Block	Rng.	No. of Acres		VALUATION	GENERAL TAXES			Ditch No.	SCHOOL DISTRICT		TOTAL TAXES	PAID	WHEN PAID	No. of Receipt	March Settlement	June Settlement	Penalty	November Settlement	Penalty	Collections to First Monday in January	Penalty	Delinquent on First Monday in January	REMARKS				
							Acres	100ths		State	County	Town		Local Sch'l	Total														Mills	District No.	Rate	Mills
									Dollars	\$	Cts.	\$	Cts.	\$	Cts.	\$	Cts.	Month	Day	Year	\$	Cts.	\$	Cts.	\$	Cts.	\$	Cts.	\$	Cts.	\$	Cts.
<i>Footings Brought Forward</i>																																
			NE 1/4 of NE 1/4					5133.30																								
Geo. E. Young and Aug. Johnson			NW 1/4 of NE 1/4					2826	113	539	238																					
			SW 1/4 of NE 1/4					2826	113	539	238																					
			SE 1/4 of NE 1/4																													
Harriet B. Evens			NE 1/4 of NW 1/4					4610	180	859	387																					
"			NW 1/4 of NW 1/4					3625	94	448	271																					
"			SW 1/4 of NW 1/4					40	161	768	336																					
"			SE 1/4 of NW 1/4					40	308	1469	336																					
M. P. Ry Co. Eliza H. Ryan			NE 1/4 of SW 1/4					40	161	768	336																					
M. P. Ry Co.			NW 1/4 of SW 1/4					40	161	768	336																					
"			SW 1/4 of SW 1/4					40	161	768	336																					
" Eliza H. Ryan			SE 1/4 of SW 1/4					40	161	768	336																					
			NE 1/4 of SE 1/4					5375	215	1026	453																					
Geo. E. Young and Aug. Johnson			NW 1/4 of SE 1/4					40	240	1145	336																					
"			SW 1/4 of SE 1/4					40	320	1526	336																					
M. P. Ry Co.			SE 1/4 of SE 1/4					40	161	768	336																					
								52736	2436	11620	4373																					
<i>Footings Carried Forward</i>																																

777 Paid Feb 14 1916 8248
1st Half Paid MAY 29 1917 5338

1246 Paid subsequent to Cert. No. 4825
719 Paid subsequent to Cert. No. 4826
1104 Paid subsequent to Cert. No. 4927
1805 Paid subsequent to Cert. No. 4828

1104 2nd Half Paid OCT 20 1917 9533
1st Half Paid MAY 11 1917 3617
1104 ✓
1104 ✓
1104 2nd Half Paid OCT 20 1917 9533
1st Half Paid MAY 11 1917 3617

1479 Paid Feb 14 1916 8248
1481 1st Half Paid MAY 29 1917
1862 Paid Feb 14 1916 8248
1st Half Paid MAY 29 1917 5338
1104 ✓

Judgement July 11-1921

Judgement July 11-1921

Judgement July 11-1921

15993

Tax List of Real Property in the Town of Sylan

Cass County, Minnesota, for Taxes of the Year 1916

IN WHOSE NAME ASSESSED	TO WHOM TRANSFERRED	Sold for Taxes	SUBDIVISION	Sec. or Lot	Town or Block	No. of Acres		VALUATION	GENERAL TAXES				Ditch No.	SCHOOL DISTRICT		TOTAL TAXES	PAID	WHEN PAID	No. of Receipt	March Settlement	June Settlement	Penalty	November Settlement	Penalty	Collections to First Monday in January	Penalty	Delinquent on First Monday in January	REMARKS	
						Acres	100ths		State	County	Town	Local Sch'l		Total	Mills														District No.
<i>Footings Brought Forward</i>																													
<i>Wm. Sice W. J. Buck</i>			NE 1/4 of NE 1/4	7	133.30	40	320	1526	281						1807	Paid in Full	APR 2 1917												
<i>Power Lbr. Co. Madena</i>			NW 1/4 of NE 1/4			40	593	2828	281						3109	Paid in Full	APR 2 1917	2639		4916	✓								
<i>"</i>			SW 1/4 of NE 1/4			40	240	1145	281						1426	Paid in Full	MAY 31 1917												
<i>"</i>			SE 1/4 of NE 1/4			40	240	1145	281						1426	Paid in Full	MAY 31 1917	7860		2854	✓								
<i>Geo. Richmond</i>			NE 1/4 of NW 1/4			40	354	1689	224						1913	Paid	3 27 18	8864									1918		
<i>Grace</i>			NW 1/4 of NW 1/4	2 1/2	24.72	144	687	101							788	Paid in Full	OCT 31 1917	10523				788	✓	79					
<i>Herman Berrels</i>			SW 1/4 of NW 1/4			44.96	180	859	252						1111	2nd Half Paid	OCT 23 1917												
<i>"</i>			SE 1/4 of NW 1/4			40	240	1145	224						1369	1st Half Paid	MAY 23 1917	9056											
<i>Annie J. Whipple</i>						20	120	572	112						684	Paid	3 22 18	8353										684	
<i>Amiel Berndt</i>			NE 1/4 of SW 1/4			40	200	954	224						1178	2nd Half Paid	OCT 21 1917	10223											
<i>Nase St. Mathere</i>			NW 1/4 of SW 1/4	1.3	45.21	270	1288	254							1542	Paid in Full	MAY 30 1917												
<i>"</i>			SW 1/4 of SW 1/4	1.4	45.47	270	1288	256							1543	Paid in Full	MAY 30 1917	5431											
<i>Amiel Berndt</i>			SE 1/4 of SW 1/4			40	240	1145	224						1369	2nd Half Paid	OCT 21 1917	10223											
<i>"</i>						40	240	1145	224						1369	1st Half Paid	MAY 21 1917	7507											
<i>Selma Erickson</i>			NE 1/4 of SE 1/4			40	320	1526	281						1807	Paid in Full	MAY 26 1917	5134											
<i>Richmond Carner</i>			NW 1/4 of SE 1/4			40	240	1145	281						1426	2nd Half Paid	MAY 29 1917	10520											
<i>"</i>			SW 1/4 of SE 1/4			40	240	1145	281						1426	1st Half Paid	MAY 25 1917	5337											
<i>Selma Erickson</i>			SE 1/4 of SE 1/4			40	320	1526	281						1807	Paid in Full	MAY 26 1917	5134											
<i>Footings Carried Forward</i>																													
						66036	4531	21613	4118																				25731

Tax List of Real Property in the Town of Sylvan

Cass County, Minnesota, for Taxes of the Year 1916

IN WHOSE NAME ASSESSED	TO WHOM TRANSFERRED	Sold for Taxes	SUBDIVISION	Sec. or Lot	Town or Block	Reg.	No. of Acres		VALUATION	GENERAL TAXES				Ditch No.	SCHOOL DISTRICT		TOTAL TAXES	PAID	WHEN PAID	No. of Receipt	March Settlement	June Settlement	Penalty	November Settlement	Penalty	Collections to First Monday in January	Penalty	Delinquent on First Monday in January	REMARKS			
							Acres	100ths		State Sch'l	County	Town	Local Sch'l		Total	State														School	Bonds	District No.
									Dollars	\$	Cts.	\$	Cts.	\$	Cts.	\$	Cts.	Month	Day	Year	\$	Cts.	\$	Cts.	\$	Cts.	\$	Cts.	\$	Cts.	\$	Cts.
<i>Footings Brought Forward</i>																																
N. G. Ry Co			NE 1/4 of NE 1/4	9	133	30	40	40	407	510																						
			NW 1/4 of NE 1/4				40	40	113	539																						
Jessie Rogers			SW 1/4 of NE 1/4				40	40	109	510																						
			SE 1/4 of NE 1/4				40	40	713	539																						
Martin Westfall			NE 1/4 of NW 1/4				40	40	524	2499																						
A. Hendrickson			NW 1/4 of NW 1/4				40	40	240	1145																						
S. E. Parks & J. H. Arnold			SW 1/4 of NW 1/4				40	40	275	1312																						
Martin Westfall			SE 1/4 of NW 1/4				40	40	240	1145																						
Duluth Brewing & Malting Co.			NE 1/4 of SW 1/4				40	40	240	1145																						
S. E. Parks & J. H. Arnold			NW 1/4 of SW 1/4				40	40	280	1312																						
Wm. Coe			SW 1/4 of SW 1/4				40	40	240	1145																						
Martin Westfall			SE 1/4 of SW 1/4				40	40	240	1145																						
Pearl Cameron			NE 1/4 of SE 1/4				40	40	240	1145																						
E. Parks			NW 1/4 of SE 1/4				40	40	240	1145																						
Oscar W. Moore	Edwin G. Hubin		SW 1/4 of SE 1/4				40	40	240	1145																						
			SE 1/4 of SE 1/4				40	40	389	1855																						
<i>Footings Carried Forward</i>																																
							640		4054	19339																						

Judgement July 11 - 1921

734
7631 Paid subsequent to Cert. No. 3223
734
7631 Paid subsequent to Cert. No. 3224
272 Paid in Full APR 11 1917
1369 Paid in Full APR 11 1917 } 2808

1426 Paid in Full FEB 19 1917 964
1593 Paid in Full MAY 31 1917 6064
1426 Paid subsequent to Cert. No. 4841
1426 Paid in Full FEB 19 1917 964
1426 Paid in Full MAY 18 1917 4132
1426 Paid subsequent to Cert. No. 4842
1426 Paid in Full APR 25 1917 3079
1426 Paid in Full FEB 19 1917 964

1369 Paid in Full APR 30 1917 5262
1369 Paid in Full MAY 17 1917
1369 Paid in Full MAY 17 1917 } 4045
2079 Paid in Full SEP 6 - 1917 8190
2879 208

Tax List of Real Property in the Town of Sylan

Cass County, Minnesota, for Taxes of the Year 1916

IN WHOSE NAME ASSESSED	TO WHOM TRANSFERRED	Sold for Taxes	SUBDIVISION	Sec. or Lot	Town or Block	No. of Acres	VALUATION	GENERAL TAXES			Ditch No.	SCHOOL DISTRICT		TOTAL TAXES	PAID	WHEN PAID	No. of Receipt	March Settlement	June Settlement	Penalty	November Settlement	Penalty	Collections to First Monday in January	Penalty	Delinquent on First Monday in January	REMARKS					
								Mills	State	Bonds		District No.	District No.																		
								Dollars	\$	Cts.	\$	Cts.	\$	Cts.	Month	Day	Year	\$	Cts.	\$	Cts.	\$	Cts.	\$	Cts.	\$	Cts.	\$	Cts.	\$	Cts.
<i>Footings Brought Forward</i>																															
B.H. Ramsey			NE 1/4 of NE 1/4	12	133.30	40	240	1145																							
"			NW 1/4 of NE 1/4			40	240	1145																							
"			SW 1/4 of NE 1/4			40	342	1632																							
"			SE 1/4 of NE 1/4			40	320	1526																							
Lyman Philhower	E.R. Jones	Martha Peterson	NE 1/4 of NW 1/4			40	132	630																							
"	"	"	NW 1/4 of NW 1/4 } Lot 1			41.50	132	630																							
"	"	"	SW 1/4 of NW 1/4			40	132	630																							
"	"	"	SE 1/4 of NW 1/4			40	132	630																							
"	"	"	NE 1/4 of SW 1/4			40	161	768																							
"	"	"	NW 1/4 of SW 1/4			40	161	768																							
"	"	"	SW 1/4 of SW 1/4			40	161	768																							
"	"	"	SE 1/4 of SW 1/4			40	161	768																							
Annie E. Koppahn	Emma & Wm. Fisher		NE 1/4 of SE 1/4			40	132	630																							
"	"		NW 1/4 of SE 1/4			40	132	630																							
"	"		SW 1/4 of SE 1/4			40	132	630																							
"	"		SE 1/4 of SE 1/4			40	132	630																							
<i>Footings Carried Forward</i>																															

2nd Half Paid OCT 9 1917
 1st Half Paid MAY 25 1917 } 8341
 2nd Half Paid OCT 9 1917 }
 1st Half Paid MAY 25 1917 } 4791
 2nd Half Paid OCT 9 1917 }
 1st Half Paid MAY 25 1917 }
 2nd Half Paid OCT 9 1917 }
 1st Half Paid MAY 25 1917 }
 2nd Half Paid OCT 9 1917 }
 1st Half Paid MAY 25 1917 }

630 Paid in full FEB 27 1917 }
 630 Paid in full FEB 27 1917 }
 630 Paid in full FEB 27 1917 } 1492
 768 Paid in full FEB 27 1917 }
 768 Paid in full FEB 27 1917 }
 768 Paid in full FEB 27 1917 }
 768 Paid in full FEB 27 1917 }

2nd Half Paid OCT 31 1917 }
 1st Half Paid MAY 31 1917 } 9840
 2nd Half Paid OCT 31 1917 } 6964
 1st Half Paid MAY 31 1917 }
 2nd Half Paid OCT 31 1917 }
 1st Half Paid MAY 31 1917 }
 2nd Half Paid OCT 31 1917 }
 1st Half Paid MAY 31 1917 }

2724 ✓

4962 ✓

1260 ✓ 1260 ✓

12930

Tax List of Real Property in the Town of Sylvan

Cass County, Minnesota, for Taxes of the Year 1916

IN WHOSE NAME ASSESSED	TO WHOM TRANSFERRED	Sold for Taxes	SUBDIVISION	Sec. or Lot	Town or Block	No. of Acres	VALUATION	GENERAL TAXES			Ditch No.	SCHOOL DISTRICT		TOTAL TAXES	PAID	WHEN PAID	No. of Receipt	March Settlement	June Settlement	Penalty	November Settlement	Penalty	Collections to First Monday in January	Penalty	Delinquent on First Monday in January	REMARKS
								State Mills	County Mills	Town Mills		State School Bonds	District No.													
Footings Brought Forward																										
Frank C. Witer			NE 1/4 of NE 1/4	13	133.30	53.10	425	2027					2027	2nd Half Paid OCT 25 1917	9213											
			NW 1/4 of NE 1/4											1st Half Paid MAY 31 1917	6338			1013			1014					
J. B. Peterson			SW 1/4 of NE 1/4																							
			SE 1/4 of NE 1/4			27.88	192	916						916	Paid in Full MAY 26 1917	5178										
Frank C. Witer			NE 1/4 of NW 1/4			40	240	1145																		
"			NW 1/4 of NW 1/4			40	240	1145						1145	1st Half Paid MAY 31 1917	6338										
J. B. Peterson			SW 1/4 of NW 1/4			29.52	475	2147						2147	1st Half Paid MAY 31 1917	6338			1145		1145					
			SE 1/4 of NW 1/4			13.94	118	563						563	1st Half Paid MAY 31 1917	6338										
Andrew H. Lee			NE 1/4 of SW 1/4			40	320	1526						1526	Paid in Full MAY 26 1917	5178										
J. B. Peterson			NW 1/4 of SW 1/4			92.12	792	3492						3492	Paid in Full MAY 15 1917	3792										
			SW 1/4 of SW 1/4			40	320	1526						1526	Paid in Full MAY 26 1917	5178										
"			SE 1/4 of SW 1/4			40	320	1526						1526	Paid in Full MAY 26 1917	5178										
"			NW 1/4 of SE 1/4			40	320	1526						1526	Paid in Full MAY 26 1917	5178										
"			SW 1/4 of SE 1/4			40	320	1526						1526	Paid in Full MAY 26 1917	5178										
"			SE 1/4 of SE 1/4			40	320	1526						1526	Paid in Full MAY 26 1917	5178										
Footings Carried Forward																										
				536.56	4317	20591																				
				20591																						

Tax List of Real Property in the Town of Sylan

Cass County, Minnesota, for Taxes of the Year 1916

IN WHOSE NAME ASSESSED	TO WHOM TRANSFERRED	Sold for Taxes	SUBDIVISION	Sec. or Lot	Town or Block	Reg.	No. of Acres		VALUATION	GENERAL TAXES			Ditch No.	SCHOOL DISTRICT		TOTAL TAXES	PAID	WHEN PAID	No. of Receipt	March Settlement	June Settlement	Penalty	November Settlement	Penalty	Collections to First Monday in January	Penalty	Delinquent on First Monday in January	REMARKS
							Acres	100ths		State Sch'l	County Sch'l	Town Sch'l		Total	State School Bonds													
<i>Footings Brought Forward</i>																												
Martin Brage			NE 1/4 of NE 1/4	14	13330	40		240	1145							1145	Paid in Full	MAR 21 1917										
"			NW 1/4 of NE 1/4 less Ry Rt way			28		377	1798							1798	Paid in Full	MAR 21 1917	2436									
Martin Anderson			SW 1/4 of NE 1/4			40		524	2499							2499	1st Half Paid	MAY 15 1917	3810									
Martin Brage	Martin Anderson		SE 1/4 of NE 1/4			30		200	954							954	Paid in Full	MAR 21 1917	2436									
John Johnson et al			NE 1/4 of NW 1/4			40		320	1526							1526	Paid in Full	MAY 31 1917										
"			NW 1/4 of NW 1/4			40		320	1526							1526	Paid in Full	MAY 31 1917	6376									
Wm. Vergutz			SW 1/4 of NW 1/4 Lot 2			44	25	264	1259							1259	Paid in Full	OCT 19 1917										
"			SE 1/4 of NW 1/4 " 1			42	40	252	1203							1203	Paid in Full	OCT 19 1917	8861									
			NE 1/4 of SW 1/4																									
			NW 1/4 of SW 1/4																									
			SW 1/4 of SW 1/4																									
			SE 1/4 of SW 1/4																									
Wm. Burroughs			Part of SE 1/4 & SW 1/4			9	75	39	186							186	Paid subsequent to Cert. No. 1625											
Martin Anderson			NE 1/4 of SE 1/4 less Ry Rt way			34		192	916							916	1st Half Paid	MAY 15 1917	3810									
Wm. Vergutz			NW 1/4 of SE 1/4 Lot 6			44	75	320	1526							1526	Paid in Full	OCT 19 1917										
"			SW 1/4 of SE 1/4																									
			SE 1/4 of SE 1/4 " 7			23		263	1254							1254	Paid in Full	OCT 19 1917	8861									
<i>Footings Carried Forward</i>																												
				416	15	3811		15792							15792													

See Receipt

Tax List of Real Property in the Town of Sylvan

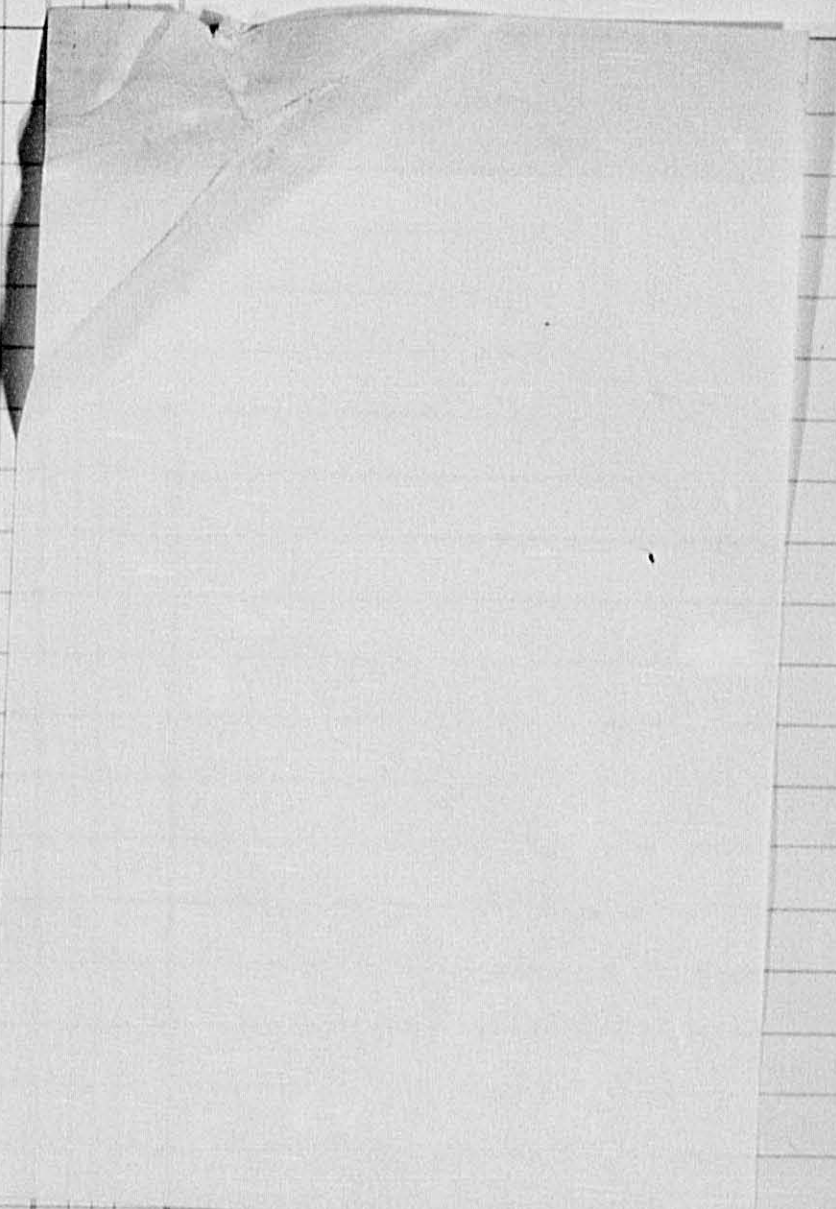
Cass County, Minnesota, for Taxes of the Year 1916

IN WHOSE NAME ASSESSED	TO WHOM TRANSFERRED	Sold for Taxes	SUBDIVISION	Sec. or Lot	Town or Block	No. of Acres	VALUATION	GENERAL TAXES			SCHOOL DISTRICT	TOTAL TAXES	PAID	WHEN PAID	No. of Receipt	March Settlement	June Settlement	Penalty	November Settlement	Penalty	Collections to First Monday in January	Penalty	Delinquent on First Monday in January	REMARKS
								Mills	School	Ditch														
<i>Footings Brought Forward</i>																								
<i>L. Anderson</i>	<i>Murray M. Mc Nair</i>		NE 1/4 of NE 1/4	18	133.30	40	491	2342	281															
"	"		NW 1/4 of NE 1/4			40	320	1526	281															
"	"		SW 1/4 of NE 1/4			40	240	1145	281															
"	"		SE 1/4 of NE 1/4			40	161	768	281															
<i>Harold A. Boney</i>			NE 1/4 of NW 1/4			40	161	768	224															
<i>Chas. A. Gardner</i>			NW 1/4 of NW 1/4 Lot 1			45.68	428	2041	256															
"			SW 1/4 of NW 1/4 " 2			45.84	204	973	257															
<i>Theodore Prescott</i>			SE 1/4 of NW 1/4			40	161	768	224															
<i>Ella Kline</i>			NE 1/4 of SW 1/4			40	320	1526	224															
<i>Mem. Mrs. Peter Nelson</i>			NW 1/4 of SW 1/4 " 3			45.99	360	1717	258															
"			SW 1/4 of SW 1/4 " 4			46.13	360	1717	259															
<i>Ella Kline</i>			SE 1/4 of SW 1/4			40	354	1689	224															
<i>B. J. Warren</i>	<i>G. Sumham</i>		NE 1/4 of SE 1/4			40	161	768	281															
"	"		NW 1/4 of SE 1/4			40	161	768	281															
"	"		SW 1/4 of SE 1/4			40	161	768	281															
"	"		SE 1/4 of SE 1/4			40	161	768	281															
<i>Footings Carried Forward</i>																								

Tax List of Real Property in the Town of Sylvan

Cass County, Minnesota, for Taxes of the Year 1916

IN WHOSE NAME ASSESSED	TO WHOM TRANSFERRED	Sold for Taxes	SUBDIVISION	Sec. or Lot	Town or Block	No. of Acres	VALUATION	GENERAL TAXES			Ditch No.	SCHOOL DISTRICT		TOTAL TAXES	PAID	WHEN PAID	No. of Receipt	March Settlement	June Settlement	Penalty	November Settlement	Penalty	Collections to First Monday in January	Penalty	Delinquent on First Monday in January	REMARKS					
								State	County	Local Sch'l		State	School Bonds														District No.	District Rate			
							Dollars	\$	Cts.	\$	Cts.	\$	Cts.	\$	Cts.	Month	Day	Year	\$	Cts.	\$	Cts.	\$	Cts.	\$	Cts.	\$	Cts.	\$	Cts.	
<i>Footings Brought Forward</i>																															
Wm. H. Fice			NE 1/4 of NE 1/4 2.66 a. of Lot 2	21	133 30	2.66	254	1212																							
S.E. Parks			NW 1/4 of NE 1/4 less 2.66 a. of " 2			12.09	429	2046																							
Cuyuna Range Power Co.			SW 1/4 of NE 1/4 " 3 24			32.50	442	2109																							
"			SE 1/4 of NE 1/4			40	240	1145																							
Peter Yde			1/2 of NE 1/4			80	480	2290																							
"			NE 1/4 of NW 1/4 " 2			32.65	444	2118																							
"			NW 1/4 of NW 1/4 less 11 a. sold																												
"			SW 1/4 of NW 1/4																												
"			SE 1/4 of NW 1/4																												
Cuyuna Range Power Co.			11 acres of Lot 2			11	60	286																							
"			NE 1/4 of SW 1/4																												
"			NW 1/4 of SW 1/4																												
"			SW 1/4 of SW 1/4																												
"			SE 1/4 of SW 1/4																												
M.P. Ry Co.			NE 1/4 of SE 1/4 " 2 23			35	2	10																							
Cuyuna Range Power Co.			NW 1/4 of SE 1/4 " 24			40	240	1145																							
"			SW 1/4 of SE 1/4 " 4			24.75	144	687																							
"			SE 1/4 of SE 1/4 " 5			26.25	156	745																							
<i>Footings Carried Forward</i>																															
						30225	2891	13793																							



2nd Half Paid OCT 1 1 1917 8572
 1st Half Paid MAY 31 1917 5574
 2046 Paid in Full MAY 24 1917 4724
 2109 2nd Half Paid OCT 3 1 1917
 1st Half Paid MAY 31 1917 10680
 1145 2nd Half Paid OCT 2 1 1917 6140
 1st Half Paid MAY 31 1917 }
 2290 Paid in Full MAY 24 1917 }
 2118 Paid in Full MAY 24 1917 } 4742
 286 2nd Half Paid OCT 3 1 1917 10680
 1st Half Paid MAY 31 1917 6140
 10 Paid in Full MAY 17 1917 4095
 1145 2nd Half Paid OCT 2 1 1917
 1st Half Paid MAY 31 1917 10680
 687 2nd Half Paid OCT 2 1 1917
 1st Half Paid MAY 31 1917 6140
 745 2nd Half Paid OCT 2 1 1917
 1st Half Paid MAY 31 1917 }

13793

Tax List of Real Property in the Town of Sylvan

Cass County, Minnesota, for Taxes of the Year 1916

IN WHOSE NAME ASSESSED	TO WHOM TRANSFERRED	Sold for Taxes	SUBDIVISION	Sec. or Lot	Town or Block	No. of Acres	VALUATION	GENERAL TAXES		Ditch No.	SCHOOL DISTRICT		TOTAL TAXES	PAID	WHEN PAID	No. of Receipt	March Settlement	June Settlement	Penalty	November Settlement	Penalty	Collections to First Monday in January	Penalty	Delinquent on First Monday in January	REMARKS	
								State Sch'l	Local Sch'l		District No.	District Rate														
			<i>Footings Brought Forward</i>																							
			NE 1/4 of NE 1/4			2.5	133.30																			
			NW 1/4 of NE 1/4																							
			SW 1/4 of NE 1/4																							
			SE 1/4 of NE 1/4																							
	<i>Cuyuna Range Power Co</i>		NE 1/4 of NW 1/4			Lot 2	32.5	18	86																	
			NW 1/4 of NW 1/4																							
			SW 1/4 of NW 1/4																							
			SE 1/4 of NW 1/4																							
	<i>do</i>		NE 1/4 of SW 1/4			" 1	30	37	16	222	1059															
			NW 1/4 of SW 1/4																							
			SW 1/4 of SW 1/4																							
			SE 1/4 of SW 1/4																							
			NE 1/4 of SE 1/4																							
			NW 1/4 of SE 1/4																							
			SW 1/4 of SE 1/4																							
			SE 1/4 of SE 1/4																							
			<i>Footings Carried Forward</i>																							
							40.41	25	1145																	
							2093	805	194	802																

86 2nd Half Paid OCT 31 1917 10680
1st Half Paid MAY 31 1917 6146

43 ✓ 43 ✓

1059 Paid 5 31 18 8607

1059

1145

681011

1145
#1-493321
#13-144992 42698
2093 805-194 802
#13-144992 42698

Tax List of Real Property in the Town of Sylvan

Cass County, Minnesota, for Taxes of the Year 1916

IN WHOSE NAME ASSESSED	TO WHOM TRANSFERRED	Sold for Taxes	SUBDIVISION	Sec. or Lot	Town or Block	Rng.	No. of Acres		VALUATION	GENERAL TAXES			Ditch No.	SCHOOL DISTRICT		TOTAL TAXES	PAID	WHEN PAID	No. of Receipt	March Settlement	June Settlement	Penalty	November Settlement	Penalty	Collections to First Monday in January	Penalty	Delinquent on First Monday in January	REMARKS									
							Acres	100ths		State	County	Local Sch'l		Total	State														School	Bonds	District No.	District No.	Rate	Rate	Mills	Mills	\$
			Village of Sylvan																																		
			Footings Brought Forward																																		
W. H. Orstine			NE 1/4 of NE 1/4	9	2			88	420							420																					
"			NW 1/4 of NE 1/4	10				8	38							38																					
"			SW 1/4 of NE 1/4	11				8	38							38																					
"			SE 1/4 of NE 1/4	12				8	38							38																					
"				13				8	38							38																					
Wm. Garvell			NE 1/4 of NW 1/4	14				8	38							38																					
"			NW 1/4 of NW 1/4	15				8	38							38																					
"			SW 1/4 of NW 1/4	16				6	38							38																					
"			SE 1/4 of NW 1/4	17				8	38							38																					
Andrew H. Lee				18				8	38							38																					
"			NE 1/4 of SW 1/4	19				8	38							38																					
"			NW 1/4 of SW 1/4	20				8	38							38																					
"			SW 1/4 of SW 1/4	21				8	38							38																					
"			SE 1/4 of SW 1/4	22				8	38							38																					
			Footings Carried Forward																																		
								192	914							914																					

420 Paid in full MAY 9 5 1917
 38 Paid in full MAY 25 1917
 38 Paid in full MAY 25 1917
 38 Paid in full MAY 25 1917
 38 Paid in full MAY 25 1917
 38 Paid in full MAY 25 1917
 38 Paid in full MAY 25 1917
 38 Paid in full MAY 15 1917
 38 Paid in full MAY 15 1917
 38 Paid in full MAY 15 1917
 38 Paid in full MAY 15 1917

5049
 610 ✓
 3792
 190 ✓

