

ASSESSMENT & TAX LIST - 1962

Sylvan

SUMMARY OF TAX COLLECTION

Original Levy	- - - - -	\$ 51,651.74
Additions	- - - - -	\$ 89.12
Abatements	- - - - -	\$ 73.74
		\$ 51,667.12

COLLECTIONS

March Settlement	- - - - -	\$ 3,211.58
June Settlement	- - - - -	\$ 25,771.27
November Settlement	- - - - -	\$ 20,183.45
January Settlement	- - - - -	\$ 40,428.49
		\$ 49,486.72
Over Collected	- - - - -	\$
Under Collected	- - - - -	\$
Delinquent	- - - - -	\$ 1,580.40
Total	- - - - -	\$ 51,067.12

Real Estate

133-29 133-29
 Sylvan's Shady Land & All Villages of N. to Sylva
 Sylvan North Sylvan Lake Carolynn's Sylva Park Sylvan Beach
 Land & All Villages of N. to Sylva Beach

TABULAR SCHEDULE OF VALUATIONS,

LEVIED IN THE town OF Sylvan

RATES AND TAXES

COUNTY OF CASS, STATE OF MINNESOTA

School District No.	VALUATION BY SCHOOL DISTRICTS				RATE OF COUNTY TAXES												RATE OF TOWN TAXES												RATE OF SCHOOL TAXES										TAXES LEVIED																										
	Agricultural Lands	Non-Agricultural Lands	Personal Property	Total Value of all Property except Money and Credits	Total Rate of State Tax	Rev.	R. & B.	Welfare	Well Bldg. and Int.	P.E.R.A. Co. Name	Total Rate of County Tax	Rev.	R. & B.	State Loan											Total Rate of Sch'l Tax	Total Rate of all Taxes	LOCAL 1 MILL AND SPECIAL SCHOOL TAXES BY DISTRICTS						ALL OTHER TAXES																																
															Local	Special	State Loan	Deficiency	Tuition	Transportation	e.o. P.E.R.A. Bd. N.D.E.A.		Local 1 Mill	Special			State Loan	Def.	e.o.	P.E.R.A.	Bd.	N.D.E.A.	Total School Taxes	FUNDS	Rate	Amounts																													
116	53,843	103,139	7a 2981	169,467	11.831	32.07	20	49.74	13.67	5.29	.91	125.57	4.72	14.75											19.47	25	50	60.24	60.24	8.56	3.66	25.96	1.98	125.4	278.69	150.4	303.69	1584.30	5306.00	6890.30	3817.53	54246	23194	164514	12548	794685	1187.53	1391.04	5433.81	3388.34	8427.85	2316.61	896.48	154.21	799.88	2499.64	3299.52	6890.30	10210.20	1450.85	6203.4	4400.01	33560	23907.30	21266.35
Assessed Value	Rural	All Other	Personal Property	Total																	Total	County: e.o. P.E.R.A. Bd. N.D.E.A.																																											
Homestead	28,397			28,397																		P.O. excluding State Rate																																											
Non-Homestead	128,585		12,485	141,070																																																													
Total	156,982		12,485	169,467																																																													
			Other 2044	12,485																																																													

Total Levy, \$ 51,051.74

L. E. Peterson
 Auditor of said County and State aforesaid, do hereby certify that the foregoing is a true and correct Schedule, showing the valuation of all the taxable property, in the town of Sylvan, in said County, the several rates of Taxation and Totals of the several Tax Funds levied thereon for the year A. D. 1967.
 Witness my hand and official seal, this 29th day of January, A. D. 1967.

L. E. Peterson
 County Auditor
 By Allen Bellan, Deputy

State of Minnesota, }
 COUNTY OF CASS, }
 Total Taxes Real Estate 47,425.46
 Pers. Prop. 3626.28
 Total 51,051.74

Real Estate

Assessor's Return of Exempt Real Property in the _____ of _____ County of _____, Minnesota, for the Year 1962

FORM 2 MILLER-DAVIS CO., MINNEAPOLIS

NAMES OF OWNERS	DESCRIPTION	Sec. or Lot	Town or Block	Range	No of Acres		FOR WHAT PURPOSE USED	TRUE AND FULL VALUATIONS				ASSESSED VALUATIONS		REMARKS
					Acres	100ths		LAND Exclusive of Structures and Improvements Dollars	BUILDINGS and Other Structures Dollars	MACHINERY Permanently Attached to Real Estate Dollars	TOTAL True and Full Value Dollars	Rural Including Machinery	All Other	
												33 1/3%	40%	
Hell River Cemetery Ass'n	202' x 226' of SW 1/4 of NW 1/4	17	133	29			Cemetery	15			15	5		
Hardy Lake Camp Ass'n Inc.	Lot 6 - Sec 277' x 266.7 x 466.7 and Highway.	33	133	29	39	18	Church grounds and bible camp	486	1725		2211	737		
Township of Sylwan, May. Fairview + Village of Pillager	Part of lot 2	5	133	30	4	-	Public Picnic Grounds	90	120		210	70		
Town of Sylwan	Village of Sylwan - Lots 6 thru 14						Town Hall	90	600		690	230		
Township of Sylwan	Carlyon Sylwan Park lots 35 to 44 incl.						Township Forest	270			270	90		

133-29 133-29
 Sylvan's Brady Shores
 Land & All Villages of Sylvan
 North Sylvan Lake
 Carolyn's Sylvan Park
 Sylvan Beach
 Land & All Villages of Sylvan
 Add'l. to Sylvan Beach

Assessment Roll and Tax List of Real Property in the Town of Sylwan

Cass County, Minnesota, for Taxes for the Year 1962.

* Indicate Type of Property: R-Residential, C-Commercial, I-Industrial, U-Utility, F-Farm, L-Lakeshore, T-Timber, M-Mineral

Table with columns: IN WHOSE NAME ASSESSED, DESCRIPTION OF PROPERTY, TRUE AND FULL VALUATIONS, ASSESSED VALUATIONS, VALUATIONS BY SCHOOL DISTRICTS AS EQUALIZED BY DEPARTMENT OF TAXATION, SOLD FOR TAXES, PAID, WHEN PAID, etc.

Assessment Roll and Tax List of Real Property in the Town of Sylvan

Cass County, Minnesota, for Taxes for the Year 1962.

* Indicate Type of Property: R-Residential, C-Commercial, I-Industrial, U-Utility, F-Farm, L-Lakeshore, T-Timber, M-Mineral

Table with columns for IN WHOSE NAME ASSESSED, DESCRIPTION OF PROPERTY, TRUE AND FULL VALUATIONS, ASSESSED VALUATIONS, VALUATIONS BY SCHOOL DISTRICTS AS EQUALIZED BY DEPARTMENT OF TAXATION, and TAXES. Includes handwritten entries for names like Chas. H. and Caroline Peterson, Harold Le Roy and Irene Peterson, George and Lucy Clark, and Brewer and Laura Peterson.

Assessment Roll and Tax List of Real Property in the Town of Syran,
* Indicate Type of Property: R-Residential, C-Commercial, I-Industrial, U-Utility, F-Farm, L-Lakeshore, T-Timber, M-Mineral

Cass County, Minnesota, for Taxes for the Year 1962.

Table with columns: IN WHOSE NAME ASSESSED, DESCRIPTION OF PROPERTY, TRUE AND FULL VALUATIONS, ASSESSED VALUATIONS, VALUATIONS BY SCHOOL DISTRICTS AS EQUALIZED BY DEPARTMENT OF TAXATION, TAXES, PAID, WHEN PAID, March Settlement, June Settlement, November Settlement, Delinquent Tax and Penalty, Total Delinquent Tax and Penalty, REMARKS.

John and Myrtle R. Bratrud
" " " "

Charles E. & Carolyn Davidson
" " " "

George E. and Barbara B. McPheeters

Edith O. Lindquist
" " " "

Brower Peterson
" " " "

" " " "

" " " "

" " " "

" " " "

Sylvan's Handy Land & All Village of Sylvan Lake Sylvan Fork Beach Sylvan's 1st. Addn. to Sylvan Beach

Assessment Roll and Tax List of Real Property in the Town of Sylvan

Cass County, Minnesota, for Taxes for the Year 1962.

Form SCD MILLER-DAVIS CO., MINNEAPOLIS * Indicate Type of Property: R-Residential, C-Commercial, I-Industrial, U-Utility, F-Farm, L-Lakeshore, T-Timber, M-Mineral

Table with columns: IN WHOSE NAME ASSESSED, SUBDIVISION, No. School District, Indicate Homestead, Agri. or Semi-Retr., etc. TRUE AND FULL VALUATIONS, ASSESSED VALUATIONS, FINAL EQUALIZED VALUE.

Table with columns: VALUATIONS BY SCHOOL DISTRICTS AS EQUALIZED BY DEPARTMENT OF TAXATION, TAX INCLUDING STATE HOMESTEAD, SPECIAL TAXES, TOTAL TAXES, PAID, WHEN PAID, Number of Receipt, etc.

Brower + Laura Peterson, Edith O. Lindquist, Barney and Oivin Ostens, NAVILLUS LAND CO., Mauder Land Co.

Sylvan's Shady Shores, Land & All Village of Sylvan, North Sylvan Lake, Sylvan Park, Sylvan Beach, Land & All Village of Sylvan, Add'n. to Sylvan Beach

Assessment Roll and Tax List of Real Property in the Town of Sylvan, Cass County, Minnesota, for Taxes for the Year 1962.

Cass County, Minnesota, for Taxes for the Year 1962.

* Indicate Type of Property: R-Residential, C-Commercial, I-Industrial, U-Utility, F-Farm, L-Lakeshore, T-Timber, M-Mineral

Main table with columns: IN WHOSE NAME ASSESSED, DESCRIPTION OF PROPERTY, TRUE AND FULL VALUATIONS, ASSESSED VALUATIONS, VALUATIONS BY SCHOOL DISTRICTS, TAXES, PAID, WHEN PAID, etc.

133-2

Vertical text on the right edge: Sylvan's Boundary to Sylvan, Sylvan Lake, Sylvan Park, Sylvan Beach, Land & Alleges' 1st.

Assessment Roll and Tax List of Real Property in the Town of Sylvan

* Indicate Type of Property: R-Residential, C-Commercial, I-Industrial, U-Utility, F-Farm, L-Lakeshore, T-Timber, M-Mineral

Table with columns: IN WHOSE NAME ASSESSED, DESCRIPTION OF PROPERTY, TRUE AND FULL VALUATIONS, ASSESSED VALUATIONS, FINAL EQUALIZED VALUE. Includes rows for Theodore LaSax and Melvin H. Esser, Carrie and Charles H. Peterson, Ted LaSax and Melvin Esser, Lawrence Lapha, Minnesota Power & Light Co., Phillip F. Holzman, Milton and Eileen Hradsky, Steven Kriz.

Cass County, Minnesota, for Taxes for the Year 1962.

Table with columns: SOLD FOR TAXES, VALUATIONS BY SCHOOL DISTRICTS AS EQUALIZED BY DEPARTMENT OF TAXATION, Tax Including State Homestead, SPECIAL TAXES, TOTAL TAXES, PAID, WHEN PAID, Number of Receipt, March Settlement, June Settlement, November Settlement, Collections to First Monday in January 1964, Delinquent on First Monday in January 1964, Total Delinquent Tax and Penalty, REMARKS. Includes rows for 1-20 and summary rows.

Sylvan's Beach, Sylvan's Shores, Sylvan's Village, Sylvan's North, Sylvan's Park, Sylvan's Beach, Sylvan's 1st.

Ass

All that part of the NE 1/4 of the NE 1/4, 17-133-29, lying above 1186' contour line running across said tract, which is 1186' above sea level elevation as established by the Mississippi River Commission, being approx. 20 acs. excepting that part of said 20 acs. included in the Northern Pacific R/W, & a certain one ac. tract owned & occupied by School Dist. No. 1 of Cass Co., & excepting the S. 15 rods of the 1/4 of the NE 1/4 of the NE 1/4.

List of Real Property in the

Town of Sylvan

of Sylvan

* Indicate Type of Property: R-Residential, C-Commercial, I-Industrial, U-Utility, F-Farm, L-Lakeshore, T-Timber, M-Mineral

Cass County, Minnesota, for Taxes for the Year 1962.

Table with columns: IN WHOSE NAME ASSESSED, PROPERTY, TRUE AND FULL VALUATIONS, ASSESSED VALUATIONS, and FINAL EQUALIZED VALUE. Includes entries for John A. Miller, Minnesota Power & Light Co., and Albert J. Cunningham.

(continued on next page)

Table with columns: VALUATIONS BY SCHOOL DISTRICTS AS EQUALIZED BY DEPARTMENT OF TAXATION, TAX INCLUDING STATE HOMESTEAD, SPECIAL TAXES, TOTAL TAXES, PAID, WHEN PAID, Number of Receipt, March Settlement, June Settlement, November Settlement, Collections to First Monday in January 1964, Delinquent on First Monday in January 1964, Total Delinquent Tax and Penalty, and REMARKS. Includes entries for Districts 1 through 20.

Sylvan's Bundy to Sylvan, Sylvan, Sylvan Lake, Sylvan Park Beach, Sylvan 1st, Sylvan Add'n. to Sylvan Beach

Assessment Roll and Tax List of Real Property in the Town of Sylvan, Cass County, Minnesota, for Taxes for the Year 1962.

Form 5CD - MILLER-DAVIS CO., MINNEAPOLIS

* Indicate Type of Property: R-Residential, C-Commercial, I-Industrial, U-Utility, F-Farm, L-Lakeshore, T-Timber, M-Mineral

Cass County, Minnesota, for Taxes for the Year 1962.

Table with columns for 'IN WHOSE NAME ASSESSED', 'DESCRIPTION OF PROPERTY', 'TRUE AND FULL VALUATIONS', 'ASSESSED VALUATIONS', 'VALUATIONS BY SCHOOL DISTRICTS AS EQUALIZED BY DEPARTMENT OF TAXATION', and 'TAXES'. Includes property details for Minnesota Power & Light Co., Home A. and Emily J. Lindall, Roger Robert and Jan Marie Peterson, and Hull River Cemetery Association.

Sylvan's Brickyard & All Village of Sylvan, North Sylvan Lake, Sylvan Park, Sylvan Beach, Sylvan's 1st Add'n. to Sylvan Beach

Assessment Roll and Tax List of Real Property in the Town of Sylvan

Cass County, Minnesota, for Taxes for the Year 1962.

Form 5CD MILLER-DAVIS CO., MINNEAPOLIS

Table with columns: IN WHOSE NAME ASSESSED, DESCRIPTION OF PROPERTY, TRUE AND FULL VALUATIONS, ASSESSED VALUATIONS, VALUATIONS BY SCHOOL DISTRICTS AS EQUALIZED BY DEPARTMENT OF TAXATION, TAXES, PAID, WHEN PAID, Number of Receipt, March Settlement 1963, June Settlement 1963, November Settlement 1963, Collections to First Monday in January 1964, Delinquent on First Monday in January 1964, Total Delinquent Tax and Penalty, REMARKS.

Sylvan's Shady Land & All Village of the to Sylvan Sylvan North Sylvan Lake Carolyn's Sylvan Park Sylvan Add'n. to Sylvan Beach

Assessment Roll and Tax List of Real Property in the Town of Sylvan, Cass County, Minnesota, for Taxes for the Year 1962.

Form 5CD MILLER-DAVIS CO., MINNEAPOLIS

* Indicate Type of Property: R-Residential, C-Commercial, I-Industrial, U-Utility, F-Farm, L-Lakeshore, T-Timber, M-Mineral

Table with columns: IN WHOSE NAME ASSESSED, SUBDIVISION, ACRES, TRUE AND FULL VALUATIONS, ASSESSED VALUATIONS, VALUATIONS BY SCHOOL DISTRICTS AS EQUALIZED BY DEPARTMENT OF TAXATION, TAXES, PAID, WHEN PAID, and REMARKS.

Vertical text on the right edge: SYLVAN'S BEACH SHORES, Land & All Village of Sylvan, North Sylvan Lake, Sylvan Park, Sylvan Beach, Add'n. to Sylvan Beach.

Assessment Roll and Tax List of Real Property in the Town of Sylvan, * Indicate Type of Property: R-Residential, C-Commercial, I-Industrial, U-Utility, F-Farm, L-Lakeshore, T-Timber, M-Mineral

Cass County, Minnesota, for Taxes for the Year 1962.

Table with columns: IN WHOSE NAME ASSESSED, DESCRIPTION OF PROPERTY, TRUE AND FULL VALUATIONS, ASSESSED VALUATIONS, VALUATIONS BY SCHOOL DISTRICTS AS EQUALIZED BY DEPARTMENT OF TAXATION, TAXES, PAID, WHEN PAID, Number of Receipt, March Settlement 1963, June Settlement 1963, November Settlement 1963, Collections to First Monday in January 1964, Delinquent on First Monday in January 1964, Total Delinquent Tax and Penalty, REMARKS.

Sylvan's Beach & All Village of Sylvan to Sylvan Sylvan Lake Sylvan Park Sylvan Beach

Assessment Roll and Tax List of Real Property in the Town of Sylvan

Cass County, Minnesota, for Taxes for the Year 1962.

Form SCD - MILLER-DAVIS CO., MINNEAPOLIS

* Indicate Type of Property: R-Residential, C-Commercial, I-Industrial, U-Utility, F-Farm, L-Lakeshore, T-Timber, M-Mineral

Table with columns: IN WHOSE NAME ASSESSED, DESCRIPTION OF PROPERTY, TRUE AND FULL VALUATIONS, ASSESSED VALUATIONS, VALUATIONS BY SCHOOL DISTRICTS AS EQUALIZED BY DEPARTMENT OF TAXATION, TAXES, PAID, WHEN PAID, Number of Receipt, March Settlement 1961, June Settlement 1961, November Settlement 1961, Collections to First Monday in January 1962, Delinquent on First Monday in January 1962, Total Delinquent Tax and Penalty, REMARKS.

(Continued on next page)

Sylvan's Beach & All Village of Sylvan to Sylvan Beach

Assessment Roll and Tax List of Real Property in the Town of Sylvan

Form 500 MILLER-DAVIS CO., MINNEAPOLIS

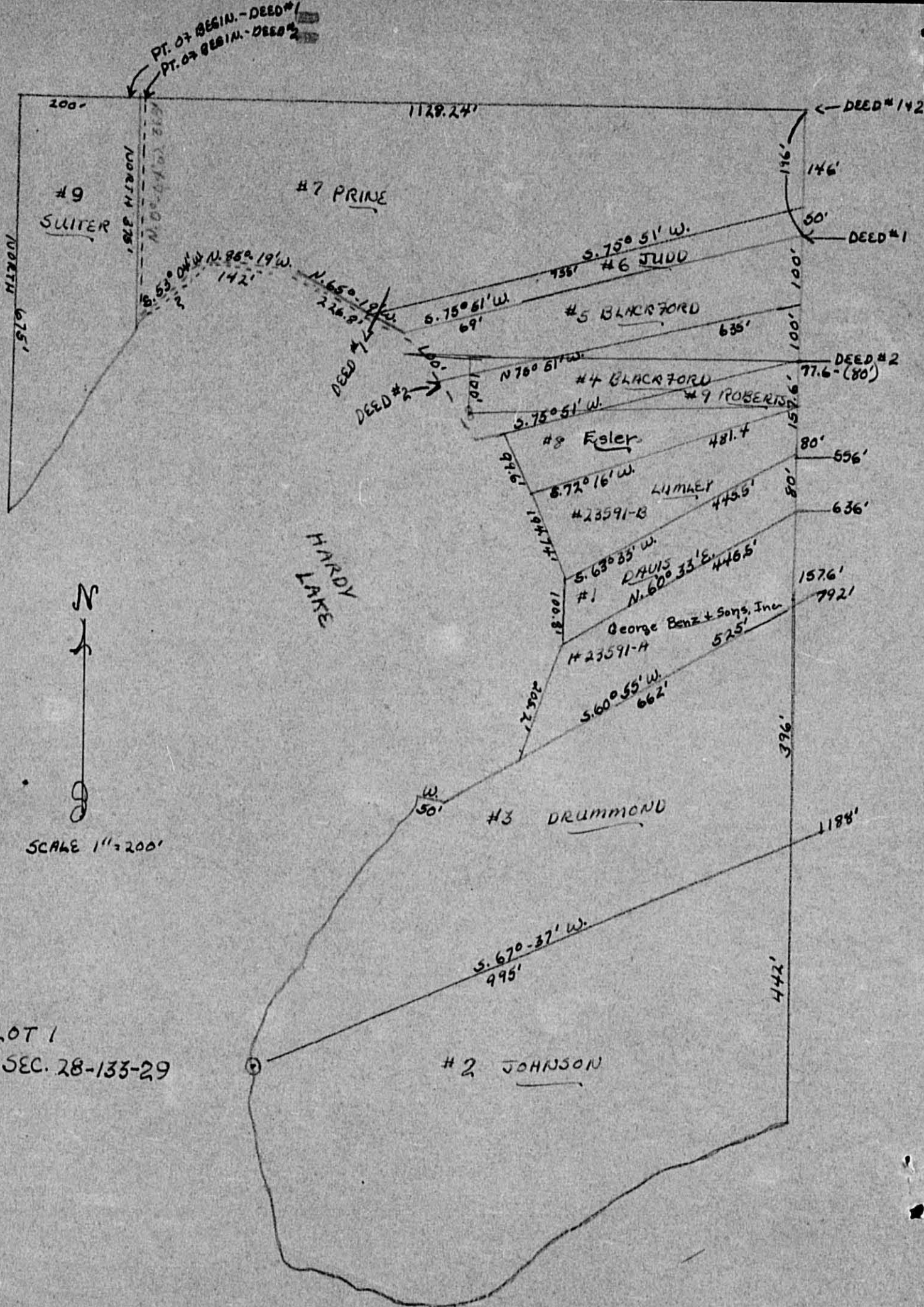
* Indicate Type of Property: R-Residential, C-Commercial, I-Industrial, U-Utility, F-Farm, L-Lakeshore, T-Timber, M-Mineral

Cass County, Minnesota, for Taxes for the Year 1962.

Table with columns: IN WHOSE NAME ASSESSED, DESCRIPTION OF PROPERTY, TRUE AND FULL VALUATIONS, ASSESSED VALUATIONS, and FINAL EQUALIZED VALUE. Includes entries for Charles R. Johnson, Arthur C. and Gladys M. Drummond, etc.

Table with columns: VALUATIONS BY SCHOOL DISTRICTS AS EQUALIZED BY DEPARTMENT OF TAXATION, TAX INCLUDING STATE HOMESTEAD, SPECIAL TAXES, TOTAL TAXES, PAID, WHEN PAID, and REMARKS. Includes entries for District No. 116, 117, etc.

Sylvan's Shady Land & All Village of Sylvan, North Lake, Sylvan Lake, Sylvan Beach, Land & All Village of Sylvan, Add'n. to Sylvan Beach



Assessment Roll and Tax List of Real Property in the Town of Sylvan, * Indicate Type of Property: R-Residential, C-Commercial, I-Industrial, U-Utility, F-Farm, L-Lakeshore, T-Timber, M-Mineral

Table with columns: IN WHOSE NAME ASSESSED, DESCRIPTION OF PROPERTY, TRUE AND FULL VALUATIONS, ASSESSED VALUATIONS, and FINAL EQUALIZED VALUE. Includes entries for Adolph and Ethel Staub, The Northwest Paper Company, and William Benson.

Cass County, Minnesota, for Taxes for the Year 1962.

Table with columns: VALUATIONS BY SCHOOL DISTRICTS AS EQUALIZED BY DEPARTMENT OF TAXATION, TAXES, PAID, WHEN PAID, and REMARKS. Includes handwritten notes and tax amounts for various properties.

Sylvan's Shady Land & All Village of Sylvan to Sylvan Sylvan Lake Sylvan Lake Sylvan Beach Carolynn's Sylvan Park Beach Sylvan Add'n. to Sylvan Beach

Assessment Roll and Tax List of Real Property in the Town of Sylvan

* Indicate Type of Property: R-Residential, C-Commercial, I-Industrial, U-Utility, F-Farm, L-Lakeshore, T-Timber, M-Mineral

Form SCD MILLER-DAVIS CO., MINNEAPOLIS

Cass County, Minnesota, for Taxes for the Year 1962.

Table with columns: IN WHOSE NAME ASSESSED, DESCRIPTION OF PROPERTY, TRUE AND FULL VALUATIONS, ASSESSED VALUATIONS, and FINAL EQUALIZED VALUE. Includes handwritten entries for property owners like Minnesota Power & Light Co. and William Benson.

Table with columns: VALUATIONS BY SCHOOL DISTRICTS AS EQUALIZED BY DEPARTMENT OF TAXATION, TAX INCLUDING STATE HOMESTEAD, SPECIAL TAXES, TOTAL TAXES, PAID, WHEN PAID, Number of Receipt, March Settlement 1961, June Settlement 1961, November Settlement 1961, Collections to First Monday in January 1964, Delinquent on First Monday in January 1964, Total Delinquent Tax and Penalty, and REMARKS. Includes handwritten notes like '1st HALF PAID MAY 31 1963'.

Sylvan's Shady Land & All Village of Sylvan North Lake Sylvan Park Sylvan Beach Sylvan 1st. Add'n. to Sylvan Beach

Assessment Roll and Tax List of Real Property in the Town of Sylvan

Form 5CD MILLER-DAVIS CO., MINNEAPOLIS

* Indicate Type of Property: R-Residential, C-Commercial, I-Industrial, U-Utility, F-Farm, L-Lakeshore, T-Timber, M-Mineral

Cass County, Minnesota, for Taxes for the Year 1962.

IN WHOSE NAME ASSESSED	DESCRIPTION OF PROPERTY			No. School District	Indicate Homestead Yes or No	Agricultural Recr. Yes or No	Indicate Type of Property	TRUE AND FULL VALUATIONS										Total Assessed Value as Equalized by the Board of Review	FINAL EQUALIZED VALUE	
	SUBDIVISION	Sec. or Lot	Town or Block					Number of Acres of Land	ASSESSED VALUATIONS											
									LAND Exclusive of Structures and Improvements	BUILDINGS and Other Structures	MACHINERY Permanently Attached to Real Estate	TOTAL True and Full Value	RURAL		ALL OTHER					MACHINERY Permanently Attached to Real Estate
			Acres 100ths	Dollars	Dollars	Dollars	Dollars	Dollars	Dollars	Dollars	Dollars	Dollars	Dollars	Dollars	Dollars	Dollars	Dollars			

SOLD FOR TAXES	VALUATIONS BY SCHOOL DISTRICTS AS EQUALIZED BY DEPARTMENT OF TAXATION						Tax including State Homestead	State Tax on Non-Homestead	SPECIAL TAXES	SPECIAL TAXES	TOTAL TAXES	PAID	WHEN PAID	Number of Receipt	March Settlement 1962	June Settlement 1962	Penalty	November Settlement 1962	Penalty	Collections to First Monday in January 1962	Penalty	Delinquent on First Monday in January 1962	Total Delinquent Tax and Penalty	REMARKS
	District No.	District No.	District No.	District No.	District No.	District No.																		
	Rate	Rate	Rate	Rate	Rate	Rate																		

State of Minnesota

Sylvan & Brady Land & All Villages of the to Sylvan Sylvan North Sylvan Lake Sylvan Park Sylvan Beach Sylvan & Allen's Ist. Add'n. to Sylvan Beach

Assessment Roll and Tax List of Real Property in the Town of Sylvan, Cass County, Minnesota, for Taxes for the Year 1962.

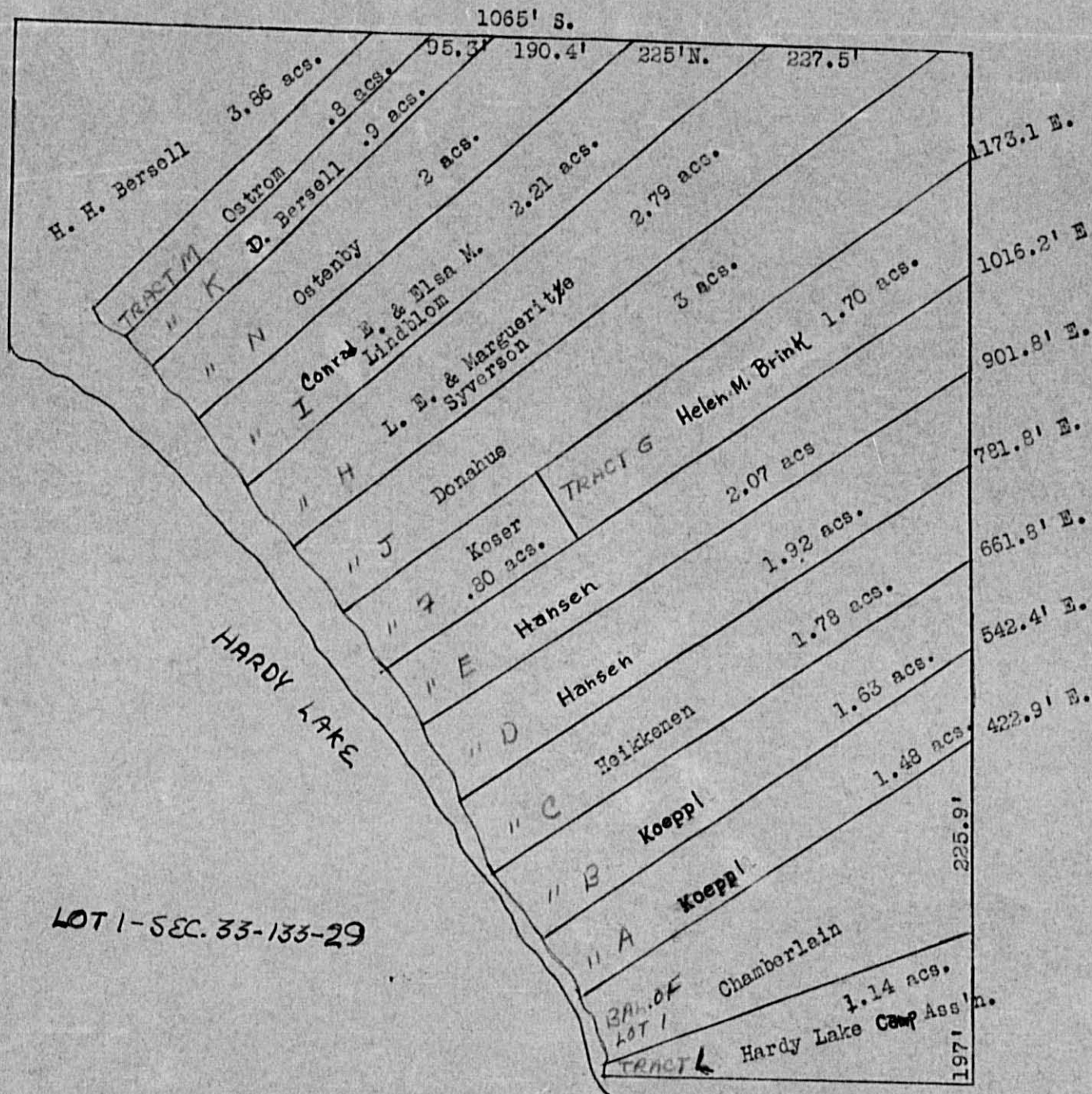
Form SCD - MILLER-DAVIS CO., MINNEAPOLIS

* Indicate Type of Property: R-Residential, C-Commercial, I-Industrial, U-Utility, F-Farm, L-Lakeshore, T-Timber, M-Mineral

Table with columns for IN WHOSE NAME ASSESSED, DESCRIPTION OF PROPERTY, TRUE AND FULL VALUATIONS, ASSESSED VALUATIONS, VALUATIONS BY SCHOOL DISTRICTS AS EQUALIZED BY DEPARTMENT OF TAXATION, TAXES, PAID, WHEN PAID, and REMARKS. Includes handwritten entries for names like Michael A. and Olga A. Chamberlain and various tract descriptions.

(Continued on next page)

Sylvan's Shady Land & All Villages of the to Sylvan Sylvan North Lake Sylvan Park Sylvan Beach Land & All Villages of the to Sylvan Beach



Assessment Roll and Tax List of Real Property in the Town of Sylvan

Cass County, Minnesota, for Taxes for the Year 1962.

Form SCD MILLER-DAVIS CO., MINNEAPOLIS

* Indicate Type of Property: R-Residential, C-Commercial, I-Industrial, U-Utility, F-Farm, L-Lakeshore, T-Timber, M-Mineral

Table with columns: IN WHOSE NAME ASSESSED, DESCRIPTION OF PROPERTY, TRUE AND FULL VALUATIONS, ASSESSED VALUATIONS, VALUATIONS BY SCHOOL DISTRICTS AS EQUALIZED BY DEPARTMENT OF TAXATION, TAXES, PAID, WHEN PAID, and REMARKS. Includes handwritten entries for property owners like Adolph H. and Amogene K. Dahl.

(Continued on next page)

Sylvan's Brandy... Sylvan Lake... Sylvan Park Beach... Sylvan... Addn. to Sylvan Beach

Assessment Roll and Tax List of Real Property in the Town of Sylvan, Cass County, Minnesota, for Taxes for the Year 1962.

Cass County, Minnesota, for Taxes for the Year 1962.

Form 500 MILLER-DAVIS CO., MINNEAPOLIS

* Indicate Type of Property: R-Residential, C-Commercial, I-Industrial, U-Utility, F-Farm, L-Lakeshore, T-Timber, M-Mineral

Table with columns for IN WHOSE NAME ASSESSED, DESCRIPTION OF PROPERTY, TRUE AND FULL VALUATIONS, ASSESSED VALUATIONS, VALUATIONS BY SCHOOL DISTRICTS AS EQUALIZED BY DEPARTMENT OF TAXATION, SOLD FOR TAXES, SPECIAL TAXES, TOTAL TAXES, PAID, WHEN PAID, Number of Receipt, March Settlement 1963, June Settlement 1963, November Settlement 1963, Collections to First Monday in January 1964, Delinquent on First Monday in January 1964, Total Delinquent Tax and Penalty, REMARKS.

(continued on next page)

Sylvan's Shady Land & All Village of Sylvan Sylvan Lake Sylvan Beach Sylvan Add'l. to Sylvan Beach

Assessment Roll and Tax List of Real Property in the Town of Sylvan, Cass County, Minnesota, for Taxes for the Year 1962.

Cass County, Minnesota, for Taxes for the Year 1962.

Table with columns for IN WHOSE NAME ASSESSED, DESCRIPTION OF PROPERTY, TRUE AND FULL VALUATIONS (LAND, BUILDINGS, MACHINERY, TOTAL), ASSESSED VALUATIONS (RURAL, ALL OTHER), VALUATIONS BY SCHOOL DISTRICTS AS EQUALIZED BY DEPARTMENT OF TAXATION, SOLD FOR TAXES, PAID, WHEN PAID, and REMARKS. Includes handwritten entries for Francis E. and Mary E. Nickerson, M.L. and Anne Rasmuson, and Ole Peterson.

Sylvan's Brady Land & All Village of Sylvan North Lake Sylvan Park Sylvan Beach Land & Allens Istb. to Sylvan Beach

Assessment Roll and Tax List of Real Property in the Town of Sylvan, Cass County, Minnesota, for Taxes for the Year 1962.

Form SCD - MILLER-DAVIS CO., MINNEAPOLIS

* Indicate Type of Property: R-Residential, C-Commercial, Industrial, U-Utility, F-Farm, L-Lakeshore, T-Timber, M-Mineral

Table with columns: IN WHOSE NAME ASSESSED, DESCRIPTION OF PROPERTY, TRUE AND FULL VALUATIONS, ASSESSED VALUATIONS, FINAL EQUALIZED VALUE. Includes handwritten entries for various lots and owners like Donald R. Farmer and Percy L. McClay.

(Continued on next page)

Cass County, Minnesota, for Taxes for the Year 1962.

Table with columns: VALUATIONS BY SCHOOL DISTRICTS AS EQUALIZED BY DEPARTMENT OF TAXATION, TAX INCLUDING STATE HOMESTEAD, SPECIAL TAXES, TOTAL TAXES, PAID, WHEN PAID, Number of Receipt, March Settlement 1963, June Settlement 1963, November Settlement 1963, Collections to First Monday in January 1964, Delinquent on First Monday in January 1964, Total Delinquent Tax and Penalty, REMARKS. Includes handwritten entries for various districts and payments.

Sylvan's Shady Land & All Village of Sylvan north Sylvan Lake Sylvan's Carolyn's Sylvan Lake Sylvan Add'l. to Sylvan Bee

Assessment Roll and Tax List of Real Property in the Town of Sylvan, Cass County, Minnesota, for Taxes for the Year 1962.

Form SCD MILLER-DAVIS CO., MINNEAPOLIS

* Indicate Type of Property: R-Residential, C-Commercial, I-Industrial, U-Utility, F-Farm, L-Lakeshore, T-Timber, M-Mineral

Table with columns: IN WHOSE NAME ASSESSED, SUBDIVISION, No. School District, Indicate Homestead, Agri. or Non-Agri., Type of Property, TRUE AND FULL VALUATIONS, ASSESSED VALUATIONS, and FINAL EQUALIZED VALUE.

Cass County, Minnesota, for Taxes for the Year 1962.

Table with columns: VALUATIONS BY SCHOOL DISTRICTS AS EQUALIZED BY DEPARTMENT OF TAXATION, SOLD FOR TAXES, SPECIAL TAXES, TOTAL TAXES, PAID, WHEN PAID, Number of Receipt, March Settlement, June Settlement, November Settlement, Collections to First Monday in January, Delinquent on First Monday in January, Total Delinquent Tax and Penalty, and REMARKS.

Sylvan's Shady Land & All Village of Sylvan North Lake Carolyn's Beach Sylvan Add'n. to Sylvan Beach

Assessment Roll and Tax List of Real Property in the Town of Sywan, Cass County, Minnesota, for Taxes for the Year 1962.

Form 500 MILLER-DAVIS CO., MINNEAPOLIS

* Indicate Type of Property: R-Residential, C-Commercial, I-Industrial, U-Utility, F-Farm, L-Lakeshore, T-Timber, M-Mineral

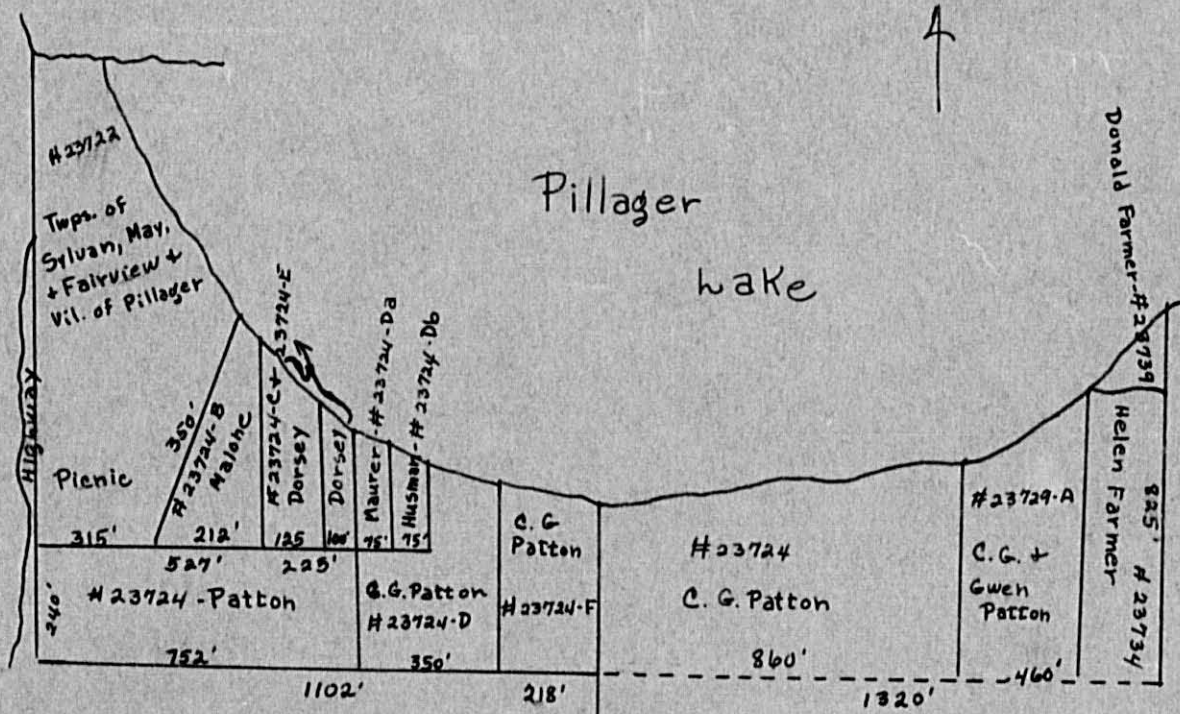
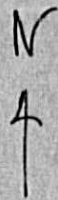
Cass County, Minnesota, for Taxes for the Year 1962.

Table with columns: IN WHOSE NAME ASSESSED, DESCRIPTION OF PROPERTY, TRUE AND FULL VALUATIONS, ASSESSED VALUATIONS, and FINAL EQUALIZED VALUE. Includes handwritten entries for various property owners like 'Part of GOVT LOT 2' and 'GOVT LOT 1'.

(continued on next page)

Table with columns: SOLD FOR TAXES, VALUATIONS BY SCHOOL DISTRICTS AS EQUALIZED BY DEPARTMENT OF TAXATION, TAX INCLUDING STATE HOMESTEAD, SPECIAL TAXES, TOTAL TAXES, PAID, WHEN PAID, Number of Receipt, March Settlement, June Settlement, November Settlement, Collections to First Monday in January, Delinquent on First Monday in January, Total Delinquent Tax and Penalty, and REMARKS. Includes handwritten entries for tax payments and dates.

Vertical text on the right edge of the page: Sywan's Beach, Land & All Village of Sywan, North Sywan Lake, Sywan Beach, Land & All Village of Sywan, Addn. to Sywan Beach.



Sec. 5-133-30

E. 218' of Gov't. lot 2
W. 860' of Gov't. lot 1 N. of
extended E-W 1/4 line.

#23735

Ralph A. + Cora Agnes Cole

40 acs.

lot 1

1320'

Assessment Roll and Tax List of Real Property in the Town of Sylvan, Minnesota

* Indicate Type of Property: R-Residential, C-Commercial, I-Industrial, U-Utility, F-Farm, L-Lakeshore, T-Timber, M-Mineral

Cass County, Minnesota, for Taxes for the Year 1962.

Table with columns: IN WHOSE NAME ASSESSED, DESCRIPTION OF PROPERTY, TRUE AND FULL VALUATIONS (RURAL, ALL OTHER, MACHINERY, Seasonal and Recreational Cabins), ASSESSED VALUATIONS, SOLD FOR TAXES, FINAL EQUALIZED VALUE.

Table with columns: VALUATIONS BY SCHOOL DISTRICTS AS EQUALIZED BY DEPARTMENT OF TAXATION, Tax including State Homestead, State Tax on Non-Homestead, SPECIAL TAXES, TOTAL TAXES, PAID, WHEN PAID, Number of Receipt, March Settlement 1963, June Settlement 1963, Penalty, November Settlement 1963, Penalty, Collections to First Monday in January 1964, Delinquent on First Monday in January 1964, Total Delinquent Tax and Penalty, REMARKS.

Sylvan's Shady Side & All Village of Sylvan North Sylvan Lake Sylvan's Beach Sylvan's Add'n. to Sylvan Beach

Assessment Roll and Tax List of Real Property in the Town of Sylvan, Cass County, Minnesota, for Taxes for the Year 1962.

Table with columns: IN WHOSE NAME ASSESSED, DESCRIPTION OF PROPERTY, TRUE AND FULL VALUATIONS (RURAL, ALL OTHER, ASSESSED VALUATIONS), VALUATIONS BY SCHOOL DISTRICTS AS EQUALIZED BY DEPARTMENT OF TAXATION, TAXES, PAID, WHEN PAID, Number of Receipt, March Settlement 1963, June Settlement 1963, November Settlement 1963, Collections to First Monday in January 1964, Delinquent on First Monday in January 1964, Total Delinquent Tax and Penalty, REMARKS.

135-30

Sylvan's Bldg. and All Village of Sylvan, Sylvan Lake, Sylvan Beach, Land & All Villages of Sylvan Lake, Sylvan Beach

Assessment Roll and Tax List of Real Property in the Town of Sylvan, Cass County, Minnesota, for Taxes for the Year 1962. * Indicate Type of Property: R-Residential, C-Commercial, I-Industrial, U-Utility, F-Farm, L-Lakeshore, T-Timber, M-Mineral

Cass County, Minnesota, for Taxes for the Year 1962.

Form 501 MILLER-DAVIS CO., MINNEAPOLIS

Table with columns: IN WHOSE NAME ASSESSED, DESCRIPTION OF PROPERTY, TRUE AND FULL VALUATIONS, ASSESSED VALUATIONS, VALUATIONS BY SCHOOL DISTRICTS AS EQUALIZED BY DEPARTMENT OF TAXATION, TAXES, PAID, WHEN PAID, Number of Receipt, March Settlement 1963, June Settlement 1963, November Settlement 1963, Collections to First Monday in January 1964, Delinquent on First Monday in January 1964, Total Delinquent Tax and Penalty, REMARKS.

Vertical text on the right margin: Sylvan's Bladdy, Land & All to Sylvan, Village of Sylvan, North Sylvan Lake, Sylvan Beach, Land & All of Sylvan Beach.

Assessment Roll and Tax List of Real Property in the Town of Sylvan, Cass County, Minnesota, for Taxes for the Year 1962.

Cass County, Minnesota, for Taxes for the Year 1962.

Form SCD MILLER-DAVIS CO., MINNEAPOLIS

* Indicate Type of Property: R-Residential, C-Commercial, I-Industrial, U-Utility, F-Farm, L-Lakeshore, T-Timber, M-Mineral

Main table with columns: IN WHOSE NAME ASSESSED, SUBDIVISION, DESCRIPTION OF PROPERTY, TRUE AND FULL VALUATIONS, ASSESSED VALUATIONS, VALUATIONS BY SCHOOL DISTRICTS AS EQUALIZED BY DEPARTMENT OF TAXATION, SPECIAL TAXES, TOTAL TAXES, PAID, WHEN PAID, Number of Receipt, March Settlement 1963, June Settlement 1963, November Settlement 1963, Penalty, Collections to First Monday in January 1964, Delinquent on First Monday in January 1964, Total Delinquent Tax and Penalty, REMARKS.

131-30

Sylvan's Shady Land & All Villages of Sylvan Lake North Sylvan Lake Sylvan Park Beach Land & All Villages of Sylvan Lake Add'n. to Sylvan Beach

Assessment Roll and Tax List of Real Property in the Town of Sylvan, Cass County, Minnesota, for Taxes for the Year 1962.

Cass County, Minnesota, for Taxes for the Year 1962.

Form SCD MILLER-DAVIS CO., MINNEAPOLIS

* Indicate Type of Property: R-Residential, C-Commercial, I-Industrial, U-Utility, F-Farm, L-Lakeshore, T-Timber, M-Mineral

Table with columns for Property Description, Valuations (True and Full, Assessed), Taxes (School Districts, State, Special), and Remarks. Includes handwritten entries for property owners like Lizzie A. Newkirk and Richard Anderson.

Assessment Roll and Tax List of Real Property in the Town of Sylvan, Cass County, Minnesota, for Taxes for the Year 1962.

Cass County, Minnesota, for Taxes for the Year 1962.

Table with columns for IN WHOSE NAME ASSESSED, DESCRIPTION OF PROPERTY, TRUE AND FULL VALUATIONS, ASSESSED VALUATIONS, VALUATIONS BY SCHOOL DISTRICTS AS EQUALIZED BY DEPARTMENT OF TAXATION, TAXES, PAID, WHEN PAID, and REMARKS. Includes handwritten entries for Theodore J. and Betty L. Holden, Herbert H. and Lois Regelin, and Mike and Frances E. Omdris.

Vertical text on the right edge of the page, including 'Sylvan' and 'Cass County'.

Assessment Roll and Tax List of Real Property in the Town of Sylvan, Cass County, Minnesota, for Taxes for the Year 1962.

Form SCD MILLER-DAVIS CO., MINNEAPOLIS

Table with columns: IN WHOSE NAME ASSESSED, DESCRIPTION OF PROPERTY, TRUE AND FULL VALUATIONS, ASSESSED VALUATIONS, VALUATIONS BY SCHOOL DISTRICTS AS EQUALIZED BY DEPARTMENT OF TAXATION, TAXES, PAID, WHEN PAID, Number of Receipt, March Settlement, June Settlement, November Settlement, Collections to First Monday in January, Delinquent on First Monday in January, Total Delinquent Tax and Penalty, REMARKS.

(Continued on next page)

Handy & All Village of Sylvan, Sylvan, North Sylvan Lake, Sylvan Park, Sylvan Beach, Land & All's 1st Addn. to Sylvan Beach

Assessment Roll and Tax List of Real Property in the Town of Sylvan

Form SCD - MILLER-DAVIS CO., MINNEAPOLIS

* Indicate Type of Property: R-Residential, C-Commercial, I-Industrial, U-Utility, F-Farm, L-Lakeshore, T-Timber, M-Mineral

Table with columns: IN WHOSE NAME ASSESSED, DESCRIPTION OF PROPERTY, TRUE AND FULL VALUATIONS, ASSESSED VALUATIONS (RURAL, ALL OTHER, MACHINERY), TAXES, and REMARKS.

Mrs. Annie C. Silver
Albert E. and Vernie M. Root
Mrs. Annie C. Silver
Albert E. and Vernie M. Root
Mrs. Annie C. Silver

Cass County, Minnesota, for Taxes for the Year 1962.

Table with columns: VALUATIONS BY SCHOOL DISTRICTS AS EQUALIZED BY DEPARTMENT OF TAXATION, TAX INCLUDING STATE HOMESTEAD, SPECIAL TAXES, TOTAL TAXES, PAID, WHEN PAID, Number of Receipt, March Settlement, June Settlement, November Settlement, Penalty, Collections to First Monday, Delinquent on First Monday, Total Delinquent Tax and Penalty, REMARKS.

Handwritten notes and calculations including tax amounts, dates (e.g., MAY 31 1963, OCT 3 1963), and settlement figures.

Vertical text on the right edge of the page, possibly from an adjacent page or index, mentioning 'Sylvan' and 'Land & All...'.

Assessment Roll and Tax List of Real Property in the Town of Sylvan

Cass County, Minnesota, for Taxes for the Year 1962.

Table with columns: IN WHOSE NAME ASSESSED, DESCRIPTION OF PROPERTY, TRUE AND FULL VALUATIONS, ASSESSED VALUATIONS, and FINAL EQUALIZED VALUE. Includes entries for John J. Parks, C. N. Sliter, Alice Anderson, et. al., and Clarence H. Sliter.

Table with columns: VALUATIONS BY SCHOOL DISTRICTS AS EQUALIZED BY DEPARTMENT OF TAXATION, Tax Including State Homestead, State Tax on Non-Homestead, SPECIAL TAXES, TOTAL TAXES, PAID, WHEN PAID, Number of Receipt, March Settlement 1963, June Settlement 1963, November Settlement 1963, Penalty, Collections to First Monday in January 1964, Delinquent on First Monday in January 1964, Total Delinquent Tax and Penalty, and REMARKS. Includes handwritten tax amounts and payment dates.

Vertical text on the right edge of the page, including 'Sylvan' and 'Land & All...'.

Assessment Roll and Tax List of Real Property in the Town of Sylvan, Cass County, Minnesota, for Taxes for the Year 1962.

Form SCD MILLER-DAVIS CO., MINNEAPOLIS

* Indicate Type of Property: R-Residential, C-Commercial, I-Industrial, U-Utility, F-Farm, L-Lakeshore, T-Timber, M-Mineral

Cass County, Minnesota, for Taxes for the Year 1962.

Table with columns: IN WHOSE NAME ASSESSED, DESCRIPTION OF PROPERTY, TRUTH AND FULL VALUATIONS, ASSESSED VALUATIONS, VALUATIONS BY SCHOOL DISTRICTS AS EQUALIZED BY DEPARTMENT OF TAXATION, TAXES, PAID, WHEN PAID, Number of Receipt, March Settlement 1963, June Settlement 1963, Penalty, November Settlement 1963, Collections to First Monday in January 1964, Delinquent on First Monday in January 1964, Total Delinquent Tax and Penalty, REMARKS.

Vertical text on the right edge of the page, including 'Sylvan' and 'Beach'.

Assessment Roll and Tax List of Real Property in the Town of Sylvan, Cass County, Minnesota, for Taxes for the Year 1962.

Form 503 MILLER-DAVIS CO., MINNEAPOLIS

* Indicate Type of Property: R-Residential, C-Commercial, I-Industrial, U-Utility, F-Farm, L-Lakeshore, T-Timber, M-Mineral

Main table with columns: IN WHOSE NAME ASSESSED, DESCRIPTION OF PROPERTY, TRUE AND FULL VALUATIONS, ASSESSED VALUATIONS, VALUATIONS BY SCHOOL DISTRICTS AS EQUALIZED BY DEPARTMENT OF TAXATION, SOLD FOR TAXES, TAXES (SPECIAL, TOTAL), PAID, WHEN PAID, Number of Receipt, March Settlement 1963, June Settlement 1963, Penalty, November Settlement 1963, Collections to First Monday in January 1964, Delinquent on First Monday in January 1964, Total Delinquent Tax and Penalty, REMARKS.

Vertical text on the right edge of the page, including 'Sylvan' and 'Cass County' repeated multiple times.

Assessment Roll and Tax List of Real Property in the Town of Sylvan, Cass County, Minnesota, for Taxes for the Year 1962.

Table with columns: IN WHOSE NAME ASSESSED, DESCRIPTION OF PROPERTY, TRUE AND FULL VALUATIONS, ASSESSED VALUATIONS, VALUATIONS BY SCHOOL DISTRICTS AS EQUALIZED BY DEPARTMENT OF TAXATION, TAXES, PAID, WHEN PAID, and REMARKS. Includes handwritten entries for George F. and Margaret Herrel, Amiel Berndt, Edward J. and Agnes A. Dorsey, Norman A. and Barbara Amelung, Edw. J. and Agnes A. Dorsey, Andrew A. and Ethel Hagg, William + Ethel M. Herrel, George F. Herrel, and Andrew A. and Ethel Hagg.

Vertical text on the right edge: Land & Allotment, Sylvan, North, Sylvan Lake, Sylvan Beach, and Sylvan Beach.

Assessment Roll and Tax List of Real Property in the Town of Sylvan, Cass County, Minnesota, for Taxes for the Year 1962.

Form SCD - MILLER-DAVIS CO., MINNEAPOLIS

Table with columns for Description of Property, True and Full Valuations, Assessed Valuations, Final Equalized Value, Sold for Taxes, and Taxation details. Includes handwritten entries for names like Howard and Elmer Phillips, Rose Marie Orr, and Stewart and Marilyn Traver.

Vertical text on the right edge: Land & All... Sylvan Lake Beach

Assessment Roll and Tax List of Real Property in the Town of Sylvan, Cass County, Minnesota, for Taxes for the Year 1962.

Cass County, Minnesota, for Taxes for the Year 1962.

Form SCD MILLER-DAVIS CO., MINNEAPOLIS

Table with columns: IN WHOSE NAME ASSESSED, DESCRIPTION OF PROPERTY, TRUE AND FULL VALUATIONS, ASSESSED VALUATIONS, VALUATIONS BY SCHOOL DISTRICTS AS EQUALIZED BY DEPARTMENT OF TAXATION, TAX INCLUDING STATE HOMESTEAD, SPECIAL TAXES, TOTAL TAXES, PAID, WHEN PAID, etc.

(Continued on next page)

Bluddy Land & All... to Sylvan... Sylvan Lake... Sylvan Beach... Land & All... Add'n. to Sylvan Beach

Assessment Roll and Tax List of Real Property in the Town of Sylvan, Cass County, Minnesota, for Taxes for the Year 1962.

Cass County, Minnesota, for Taxes for the Year 1962.

Form 5CD MILLER-DAVIS CO., MINNEAPOLIS

* Indicate Type of Property: R-Residential, C-Commercial, I-Industrial, U-Utility, F-Farm, L-Lakeshore, T-Timber, M-Mineral

Table with columns: IN WHOSE NAME ASSESSED, DESCRIPTION OF PROPERTY, TRUE AND FULL VALUATIONS, ASSESSED VALUATIONS, VALUATIONS BY SCHOOL DISTRICTS AS EQUALIZED BY DEPARTMENT OF TAXATION, SOLD FOR TAXES, PAID, WHEN PAID, Number of Receipt, March Settlement 1963, June Settlement 1963, November Settlement 1963, Penalty, Collections to First Monday in January 1964, Delinquent on First Monday in January 1964, Total Delinquent Tax and Penalty, REMARKS.

Minnesota Power & Light Co. - Pillsbury Power Plant

Hesley & Peterson

Vertical text on the right edge of the page, including 'Sylvan', 'Beach', and 'Add'n. to Sylvan Beach'.

Assessment Roll and Tax List of Real Property in the Town of Sylvan

* Indicate Type of Property: R-Residential, C-Commercial, I-Industrial, U-Utility, F-Farm, L-Lakeshore, T-Timber, M-Mineral

Cass County, Minnesota, for Taxes for the Year 1962.

Form SCD MILLER-DAVIS CO., MINNEAPOLIS

Table with columns for Description of Property, True and Full Valuations, Assessed Valuations, Final Equalized Value, Sold for Taxes, Valuations by School Districts, and Tax Payment details. Includes handwritten entries for names like Friedrich H. Provalk, Sr. et al and Theodore Prescott.

Vertical text on the right edge: Land & All... to Sylvan... Sylvan Lake... Sylvan Beach... Addn. to Sylvan Beach

Assessment Roll and Tax List of Real Property in the Town of Sylvan, Cass County, Minnesota, for Taxes for the Year 1962.

Form 5CD MILLER-DAVIS CO., MINNEAPOLIS

Table with columns: IN WHOSE NAME ASSESSED, SUBDIVISION, Sec. or Lot, Town or Block, Rng., Number of Acres of Land, No. School District, Indicate Homestead, Agri. or Seas. Recr., Indicate Type of Property, TRUE AND FULL VALUATIONS, ASSESSED VALUATIONS, and FINAL EQUALIZED VALUE.

Table with columns: VALUATIONS BY SCHOOL DISTRICTS AS EQUALIZED BY DEPARTMENT OF TAXATION, SOLD FOR TAXES, SPECIAL TAXES, TOTAL TAXES, PAID, WHEN PAID, Number of Receipt, March Settlement 1963, June Settlement 1963, November Settlement 1963, Penalties, Collections to First Monday in January 1964, Delinquent on First Monday in January 1964, Total Delinquent Tax and Penalty, and REMARKS.

Vertical text on the right edge of the page, including 'Sylvan' and other property-related information.

Assessment Roll and Tax List of Real Property in the Town of Sylvan, Cass County, Minnesota, for Taxes for the Year 1962.

Cass County, Minnesota, for Taxes for the Year 1962.

Form 501 MILLER-DAVIS CO., MINNEAPOLIS

* Indicate Type of Property: R-Residential, C-Commercial, I-Industrial, U-Utility, F-Farm, L-Lakeshore, T-Timber, M-Mineral

Main table with columns: IN WHOSE NAME ASSESSED, DESCRIPTION OF PROPERTY, TRUE AND FULL VALUATIONS, ASSESSED VALUATIONS, VALUATIONS BY SCHOOL DISTRICTS AS EQUALIZED BY DEPARTMENT OF TAXATION, TAX INCLUDING STATE HOMESTEAD, SPECIAL TAXES, TOTAL TAXES, PAID, WHEN PAID, Number of Receipt, March Settlement 1963, June Settlement 1963, Penalty, November Settlement 1963, Collections to First Monday in January 1964, Delinquent on First Monday in January 1964, Total Delinquent Tax and Penalty, REMARKS.

Vertical text on the right edge: SYLVAN, Land & Allan, 3rd Add'l, a, MCKENSON, Add'n. to Sylvan Beach

Assessment Roll and Tax List of Real Property in the Town of Sylvan, Cass County, Minnesota, for Taxes for the Year 1962.

Form 501 MILLER-DAVIS CO., MINNEAPOLIS

Table with columns: IN WHOSE NAME ASSESSED, DESCRIPTION OF PROPERTY, TRUE AND FULL VALUATIONS, ASSESSED VALUATIONS, and FINAL EQUALIZED VALUE. Includes handwritten entries for 'Minnesota Power + Light Co.' and 'GOVT LOT 2'.

Cass County, Minnesota, for Taxes for the Year 1962.

Table with columns: VALUATIONS BY SCHOOL DISTRICTS AS EQUALIZED BY DEPARTMENT OF TAXATION, TAX INCLUDING STATE HOMESTEAD, SPECIAL TAXES, TOTAL TAXES, PAID, WHEN PAID, and REMARKS. Includes handwritten entries for 'NA' and 'PAID IN FULL MAY 31 1963'.

Vertical text on the right edge of the page, including 'Sylvan' and 'Land & All...'.

Assessment Roll and Tax List of Real Property in the Town of Sylvan

* Indicate Type of Property: R-Residential, C-Commercial, I-Industrial, U-Utility, F-Farm, L-Lakeshore, T-Timber, M-Mineral

Form SCD - MILLER-DAVIS CO., MINNEAPOLIS

Table with columns: IN WHOSE NAME ASSESSED, SUBDIVISION, Sec. of Lot, Town or Block, No. of Acres, No. School District, Indicate Home-Stead, Indicate Agri. Use, Indicate Type of Property, TRUE AND FULL VALUATIONS, ASSESSED VALUATIONS (RURAL, ALL OTHER), TOTAL ASSESSED VALUE, and FINAL EQUALIZED VALUE.

Minnesota Power & Light Co.

St. Olaf College

37 10

408

408

136

136

Cass County, Minnesota, for Taxes for the Year 1962.

Table with columns: SOLD FOR TAXES, VALUATIONS BY SCHOOL DISTRICTS AS EQUALIZED BY DEPARTMENT OF TAXATION, Tax Including State Homestead, State Tax on Non-Homestead, SPECIAL TAXES, TOTAL TAXES, PAID, WHEN PAID, Number of Receipt, March Settlement, June Settlement, Penalty, November Settlement, Penalty, Collections to First Monday in January 1964, Delinquent on First Monday in January 1964, Total Delinquent Tax and Penalty, REMARKS.

A NA

2nd HALF PAID OCT 6 1963

PAID IN FULL MAY 31 1963

15

121 = 136

418 3674 4092

116

4208

2319

1889

Sylvan Land & Allan 3rd Add'n, Jackson to Sylvan Village of Sylvan Lake Sylvan Beach

Assessment Roll and Tax List of Real Property in the Town of Sylvan

Form 5C MILLER-DAVIS CO., MINNEAPOLIS

* Indicate Type of Property: R-Residential, C-Commercial, I-Industrial, U-Utility, F-Farm, L-Lakeshore, T-Timber, M-Mineral

Table with columns: IN WHOSE NAME ASSESSED, SUBDIVISION, Sec. of Lot, Town or Block, Ring., Number of Acres of Land, No. School District, Indicate Home-stand Yes or No, Agr. or Seas. Use Yes or No, Indicate Type of Property, TRUE AND FULL VALUATIONS (LAND, BUILDINGS, MACHINERY, TOTAL True and Full Value), ASSESSED VALUATIONS (RURAL, ALL OTHER, TOTAL ASSESSED VALUE), Total Assessed Value as Equalized by the Board of Review, FINAL EQUALIZED VALUE.

(Continued on next page)

Cass County, Minnesota, for Taxes for the Year 1962.

Table with columns: SOLD FOR TAXES, VALUATIONS BY SCHOOL DISTRICTS AS EQUALIZED BY DEPARTMENT OF TAXATION, Tax Including State Homestead, State Tax on Non-Homestead, SPECIAL TAXES, TOTAL TAXES, PAID, WHEN PAID, Number of Receipt, March Settlement 1963, June Settlement 1963, Penalty, November Settlement 1963, Collections to First Monday in January 1964, Delinquent on First Monday in January 1964, Total Delinquent Tax and Penalty, REMARKS.

Village of Sylvan

Sylvan Land & Allens 2nd Add'n to Sylvan Beach
Sylvan North Sylvan Lake Sylvan Park Sylvan Beach
Land & Allen 3rd Add'n to Sylvan Park
Land & Allens 1st Add'n to Sylvan Beach

Assessment Roll and Tax List of Real Property in the Town of Sylvan, Cass County, Minnesota, for Taxes for the Year 1962.

Form 5C MILLER-DAVIS CO., MINNEAPOLIS

* Indicate Type of Property: R-Residential, C-Commercial, I-Industrial, U-Utility, F-Farm, L-Lakeshore, T-Timber, M-Mineral

Table with columns: IN WHOSE NAME ASSESSED, DESCRIPTION OF PROPERTY, TRUE AND FULL VALUATIONS, ASSESSED VALUATIONS, and FINAL EQUALIZED VALUE. Includes handwritten entries for Charles M. + Della D. Luttrell in the Village of Sylvan.

Cass County, Minnesota, for Taxes for the Year 1962.

Table with columns: VALUATIONS BY SCHOOL DISTRICTS AS EQUALIZED BY DEPARTMENT OF TAXATION, SOLD FOR TAXES, PAID, WHEN PAID, and REMARKS. Includes handwritten entries for 'H 3' and 'H 6'.

Village of Sylvan

Sylvan Land & Aileen's 2nd Add'n. to Sylvan Beach. Sylvan North Sylvan Lake Sylvan Park Sylvan Park Sylvan Beach. Sylvan Land & Aileen's 3rd Add'n. Sylvan Park Sylvan Beach. Sylvan Land & Aileen's 1st Add'n. to Sylvan Beach.

Assessment Roll and Tax List of Real Property in the Town of Sylvan

Form 5C MILLER-DAVIS CO., MINNEAPOLIS

* Indicate Type of Property: R-Residential, C-Commercial, I-Industrial, U-Utility, F-Farm, L-Lakeshore, T-Timber, M-Mineral

Village of Sylvan

Table with columns: IN WHOSE NAME ASSESSED, SUBDIVISION, Sec. or Lot, Town or Block, Rng., Number of Acres of Land, No. School District, Indicate Home-Stead, Agr. or Sea-Rec., Indicate Type of Property, TRUE AND FULL VALUATIONS, ASSESSED VALUATIONS, TOTAL ASSESSED VALUE, FINAL EQUALIZED VALUE.

Cass County, Minnesota, for Taxes for the Year 1962.

Table with columns: SOLD FOR TAXES, VALUATIONS BY SCHOOL DISTRICTS AS EQUALIZED BY DEPARTMENT OF TAXATION, Tax Including State Homestead, State Tax on Non-Homestead, SPECIAL TAXES, TOTAL TAXES, PAID, WHEN PAID, Number of Receipt, March Settlement 1963, June Settlement 1963, November Settlement 1963, Collections to First Monday in January 1964, Delinquent on First Monday in January 1964, Total Delinquent Tax and Penalty, REMARKS.

Sylvan Land & Aileen's 2nd Add'n to Sylvan Beach
Sylvan Land & Aileen 3rd Add'n to Sylvan Beach
Sylvan North Sylvan Lake
Sylvan S. Sylvan Park
Sylvan McKisson
Sylvan Add'n. to Sylvan Beach

Assessment Roll and Tax List of Real Property in the Town of Sylvan, Cass County, Minnesota, for Taxes for the Year 1962.

Form 5C MILLER-DAVIS CO., MINNEAPOLIS

* Indicate Type of Property: R-Residential, C-Commercial, I-Industrial, U-Utility, F-Farm, L-Lakeshore, T-Timber, M-Mineral

Cass County, Minnesota, for Taxes for the Year 1962.

Village of Sylvan
North Sylvan Lake
Carolyn's Sylvan Park

Table with columns: IN WHOSE NAME ASSESSED, SUBDIVISION, Sec. or Lot, Town or Block, Rng. or Block, Number of Acres of Land, No. School District, Indicate Home-stead, Agr. or Seas., Indicate Type of Property, TRUE AND FULL VALUATIONS (LAND, BUILDINGS, MACHINERY, TOTAL), ASSESSED VALUATIONS (RURAL, ALL OTHER), TOTAL ASSESSED VALUE, FINAL EQUALIZED VALUE.

Table with columns: SOLD FOR TAXES, VALUATIONS BY SCHOOL DISTRICTS AS EQUALIZED BY DEPARTMENT OF TAXATION, Tax Including State Homestead, State Tax on Non-Homestead, SPECIAL TAXES, TOTAL TAXES, PAID, WHEN PAID, Number of Receipt, March Settlement 1963, June Settlement 1963, Penalty, November Settlement 1963, Penalty, Collections to First Monday in January 1964, Penalty, Delinquent on First Monday in January 1964, Total Delinquent Tax and Penalty, REMARKS.

Sylvan Beach
Land & Sylvan Beach
Land & Sylvan Beach
Land & Sylvan Beach
McKison
Land & Sylvan's 1st
Sylvan Beach

Assessment Roll and Tax List of Real Property in the Town of Sylvan, Cass County, Minnesota, for Taxes for the Year 1962.

SC MILLER-DAVIS CO., MINNEAPOLIS

* Indicate Type of Property: R-Residential, C-Commercial, I-Industrial, U-Utility, F-Farm, L-Lakeshore, T-Timber, M-Mineral

Cass County, Minnesota, for Taxes for the Year 1962.

13-30

Village of Sylvan North Sylvan Lake Carolyn's Sylvan Park

Main assessment table with columns: IN WHOSE NAME ASSESSED, DESCRIPTION OF PROPERTY, TRUE AND FULL VALUATIONS, ASSESSED VALUATIONS, VALUATIONS BY SCHOOL DISTRICTS AS EQUALIZED BY DEPARTMENT OF TAXATION, SOLD FOR TAXES, SPECIAL TAXES, PAID, WHEN PAID, etc.

Sylvan Land & Allens 2nd Add'n to Sylvan Beach Land & Allens 3rd Add'n to Sylvan Beach McKisson Land & Allens 1st Add'n to Sylvan Beach

Assessment Roll and Tax List of Real Property in the Town of Sylvan, Minnesota

Form 5C MILLER-DAVIS CO., MINNEAPOLIS

Table with columns: IN WHOSE NAME ASSESSED, SUBDIVISION, Description of Property, TRUE AND FULL VALUATIONS, ASSESSED VALUATIONS, and FINAL EQUALIZED VALUE. Includes entries for Chas. R. and Mabel M. Hoodhouse, John A. and Helen A. Lister, etc.

Village of Sylvan

North Sylvan Lake

Carolyn's Sylvan Park

Cass County, Minnesota, for Taxes for the Year 1962.

Table with columns: SOLD FOR TAXES, VALUATIONS BY SCHOOL DISTRICTS AS EQUALIZED BY DEPARTMENT OF TAXATION, Tax including State Homestead, State Tax on Non-Homestead, SPECIAL TAXES, TOTAL TAXES, PAID, WHEN PAID, Number of Receipt, March Settlement 1963, June Settlement 1963, Penalty, November Settlement 1963, Collections to First Monday in January 1964, Delinquent on First Monday in January 1964, Total Delinquent Tax and Penalty, REMARKS. Includes entries for various districts and tax amounts.

Sylvan Beach

Land & Allens 2nd Add'n to Sylvan Beach

Land & Allen 3rd Add'n to Sylvan Beach

Mokksson Sylvan Beach

Land & Allens 1st Add'n to Sylvan Beach

Assessment Roll and Tax List of Real Property in the Town of Sylvan, Cass County, Minnesota, for Taxes for the Year 1962.

Form 50 MILLER-DAVIS CO., MINNEAPOLIS

Table with columns: IN WHOSE NAME ASSESSED, SUBDIVISION (Sylvan Beach), DESCRIPTION OF PROPERTY, TRUE AND FULL VALUATIONS, ASSESSED VALUATIONS (RURAL, ALL OTHER), TOTAL ASSESSED VALUE, and FINAL EQUALIZED VALUE.

Cass County, Minnesota, for Taxes for the Year 1962.

Table with columns: SOLD FOR TAXES, VALUATIONS BY SCHOOL DISTRICTS AS EQUALIZED BY DEPARTMENT OF TAXATION, TAX INCLUDING STATE, SPECIAL TAXES, TOTAL TAXES, PAID, WHEN PAID, Number of Receipt, March Settlement, June Settlement, November Settlement, Collections to First Monday in January 1964, Delinquent on First Monday in January 1964, Total Delinquent Tax and Penalty, and REMARKS.

13-30 Village of Sylvan North Sylvan Lake Sylvan Park Sylvan Beach Sylvan Beach Carolyn's Sylvan Park Sylvan Beach

Sylvan Beach Andy to Sylvan Beach Land & Allen 2nd Add'n Land & Allen 3rd Add'n Hokkisson Land & Allen 1st Add'n to Sylvan Beach

Assessment Roll and Tax List of Real Property in the Town of Sylvan

Form 5C MILLER-DAVIS CO., MINNEAPOLIS

* Indicate Type of Property: R-Residential, C-Commercial, I-Industrial, U-Utility, F-Farm, L-Lakeshore, T-Timber, M-Mineral

Table with columns: IN WHOSE NAME ASSESSED, DESCRIPTION OF PROPERTY, SUBDIVISION, Sec. or Lot, Town or Block, Rng., Number of Acres of Land, No. School District, Indicate Home-Stepped, Yes or No, Agr. or Non-Agr., Indicate Type of Property, LAND Exclusive of Structures and Improvements, BUILDINGS and Other Structures, MACHINERY Permanently Attached to Real Estate, TOTAL True and Full Value, RURAL (Homestead Up to \$4,000 20%, Over \$4,000 and Non-Homestead 33 1/3%, Timber Land Class 3e 20%), ALL OTHER (Homestead Up to \$4,000 25%, Over \$4,000 and Non-Homestead 40%, MACHINERY Permanently Attached to Real Estate 33 1/3%, Seasonal and Recreational Cabins 33 1/3%), TOTAL ASSESSED VALUE, Total Assessed Value as Equalized by the Board of Review, FINAL EQUALIZED VALUE.

Cass County, Minnesota, for Taxes for the Year 1962

77

Table with columns: SOLD FOR TAXES, VALUATIONS BY SCHOOL DISTRICTS AS EQUALIZED BY DEPARTMENT OF TAXATION (District No., Rate, Mills), Tax Including State Homestead, State Tax on Non-Homestead, SPECIAL TAXES, TOTAL TAXES, PAID, WHEN PAID (Month Day Year), Number of Receipt, March Settlement 1963, June Settlement 1963, Penalty, November Settlement 1963, Penalty, Collections to First Monday in January 1964, Penalty, Delinquent on First Monday in January 1964, Total Delinquent Tax and Penalty, REMARKS.

Assessment Roll and Tax List of Real Property in the Town of Sylvan

Form 50 MILLER-DAVIS CO., MINNEAPOLIS

* Indicate Type of Property: R-Residential, C-Commercial, I-Industrial, U-Utility, F-Farm, L-Lakeshore, T-Timber, M-Mineral

Table with columns: IN WHOSE NAME ASSESSED, SUBDIVISION, Sec. of Lot, Town or Block, No. of Acres, TRUE AND FULL VALUATIONS, ASSESSED VALUATIONS, and FINAL EQUALIZED VALUE.

Cass County, Minnesota, for Taxes for the Year 1962.

Table with columns: SOLD FOR TAXES, VALUATIONS BY SCHOOL DISTRICTS AS EQUALIZED BY DEPARTMENT OF TAXATION, Tax Including State Homestead, State Tax on Non-Homestead, SPECIAL TAXES, TOTAL TAXES, PAID, WHEN PAID, Number of Receipt, March Settlement, June Settlement, Penalty, November Settlement, Penalty, Collections to First Monday in January 1964, Delinquent on First Monday in January 1964, Total Delinquent Tax and Penalty, and REMARKS.

135-30 Village of Sylvan North Sylvan Park Sylvan Lake Sylvan Beach Sylvan Add'n. to Sylvan Beach

Sylvan's Shady Acres to Sylvan Beach Land & Allen 2nd Add'n. to Sylvan Beach Land & Allen 3rd Add'n. to Sylvan Beach Kalksson Acres

Assessment Roll and Tax List of Real Property in the Town of Sylvan

* Indicate Type of Property: R-Residential, C-Commercial, I-Industrial, U-Utility, F-Farm, L-Lakeshore, T-Timber, M-Mineral

Main assessment table with columns: IN WHOSE NAME ASSESSED, SUBDIVISION, No. School District, Indicate Home-land, Agr. Rec., Indicate Type of Property, LAND, BUILDINGS, MACHINERY, TOTAL True and Full Value, RURAL, ALL OTHER, ASSESSED VALUATIONS, TOTAL ASSESSED VALUE, FINAL EQUALIZED VALUE.

Cass County, Minnesota, for Taxes for the Year 1962.

Tax table with columns: VALUATIONS BY SCHOOL DISTRICTS AS EQUALIZED BY DEPARTMENT OF TAXATION, Tax including State Homestead, State Tax on Non-Homestead, SPECIAL TAXES, TOTAL TAXES, PAID, WHEN PAID, Number of Receipt, March Settlement 1963, June Settlement 1963, November Settlement 1963, Collections to First Monday in January 1964, Delinquent on First Monday in January 1964, Total Delinquent Tax and Penalty, REMARKS.

135-29

Village of Sylvan

North Sylvan Lake

Sylvan Beach

Land & Allen's Ist. Add'n. to Sylvan Beach

135-30

Land & Allen's 2nd Add'n. to Sylvan Beach

Land & Allen's 3rd Add'n. to Sylvan Beach

135-31

Waldman Acres

Assessment Roll and Tax List of Real Property in the Town of Sylvan

Form 5C - MILLER-DAVIS CO., MINNEAPOLIS

* Indicate Type of Property: R-Residential, C-Commercial, I-Industrial, U-Utility, F-Farm, L-Lakeshore, T-Timber, M-Mineral

Table with columns: IN WHOSE NAME ASSESSED, SUBDIVISION, Sec. of Lot, Town or Block, Rng., Number of Acres of Land, TRUE AND FULL VALUATIONS (LAND, BUILDINGS, MACHINERY, TOTAL True and Full Value), ASSESSED VALUATIONS (RURAL, ALL OTHER), TOTAL ASSESSED VALUE, FINAL EQUALIZED VALUE.

Cass County, Minnesota, for Taxes for the Year 1962.

Table with columns: VALUATIONS BY SCHOOL DISTRICTS AS EQUALIZED BY DEPARTMENT OF TAXATION, SOLD FOR TAXES, District No., District Rate, District Mills, Tax Including State Homestead, State Tax on Non-Homestead, SPECIAL TAXES, TOTAL TAXES, PAID, WHEN PAID, Number of Receipt, March Settlement 1963, June Settlement 1963, Penalty, November Settlement 1963, Penalty, Collections to First Monday in January 1964, Penalty, Delinquent on First Monday in January 1964, Total Delinquent Tax and Penalty, REMARKS.

Vertical text on the left edge: Shady Shores, Sylvan, Villages of Sylvan, North Sylvan Lake, Sylvan Park, Sylvan Beach, Carolyn's Sylvan Park, Land & Allen's Ltd. Add'n. to Sylvan Beach.

Vertical text on the right edge: Land & Allen's 2nd Add'n. Land & Allen 3rd Add'n. Sylvan Beach, to Sylvan Beach, McKesson Acres.

Assessment Roll and Tax List of Real Property in the Town of Sylvan, Minnesota

Form 50 MILLER-DAVIS CO., MINNEAPOLIS

* Indicate Type of Property: R-Residential, C-Commercial, I-Industrial, U-Utility, F-Farm, L-Lakeshore, T-Timber, M-Mineral

Cass County, Minnesota, for Taxes for the Year 1962.

133-30, Village of Sylvan, North Sylvan Lake, Sylvan Park, Sylvan Beach, Land & Allen's 1st Add'n. to Sylvan Beach

Table with columns: IN WHOSE NAME ASSESSED, SUBDIVISION, Sec. or Lot, Town or Block, Rng., Number of Acres of Land, No. School District, Indicate Homestead, Indicate Type of Property, TRUE AND FULL VALUATIONS (LAND, BUILDINGS, MACHINERY, TOTAL), ASSESSED VALUATIONS (RURAL, ALL OTHER, MACHINERY, Seasonal and Recreational Cabins, TOTAL ASSESSED VALUE), Total Assessed Value as Equalized by the Board of Review, FINAL EQUALIZED VALUE.

Table with columns: VALUATIONS BY SCHOOL DISTRICTS AS EQUALIZED BY DEPARTMENT OF TAXATION, SOLD FOR TAXES, District No., District Rate, District No., District Rate, District No., District Rate, Tax Including State Homestead, State Tax on Non-Homestead, SPECIAL TAXES, TOTAL TAXES, PAID, WHEN PAID, Number of Receipt, March Settlement, June Settlement, November Settlement, Penalty, Collections to First Monday in January 1964, Delinquent on First Monday in January 1964, Total Delinquent Tax and Penalty, REMARKS.

Land & Allen's 2nd Add'n to Sylvan Beach, Land & Allen's 3rd Add'n to Sylvan Beach, McKisson Acres

Assessment Roll and Tax List of Real Property in the Town of Sylvan

SC MILLER-DAVIS CO., MINNEAPOLIS

* Indicate Type of Property: R-Residential, C-Commercial, I-Industrial, U-Utility, F-Farm, L-Lakeshore, T-Timber, M-Mineral

Table with columns: IN WHOSE NAME ASSESSED, SUBDIVISION, No. School District, Indicate Home Stead, Agri. or Recr. Use, Indicate Type of Property, TRUE AND FULL VALUATIONS (LAND, BUILDINGS, MACHINERY, TOTAL), ASSESSED VALUATIONS (RURAL, ALL OTHER), Total Assessed Value, FINAL EQUALIZED VALUE.

Cass County, Minnesota, for Taxes for the Year 1962.

Table with columns: SOLD FOR TAXES, VALUATIONS BY SCHOOL DISTRICTS AS EQUALIZED BY DEPARTMENT OF TAXATION, Tax Including State Homestead, State Tax on Non-Homestead, SPECIAL TAXES, TOTAL TAXES, PAID, WHEN PAID, Number of Receipt, March Settlement, June Settlement, Penalty, November Settlement, Collections to First Monday in January, Delinquent on First Monday in January, Total Delinquent Tax and Penalty, REMARKS.

Vertical text on the left margin: 133-30, Village of Sylvan, North Sylvan Lake, North Sylvan Beach, Sylvan Beach, Land & Allen's 1st Add'n. to Sylvan Beach.

Vertical text on the right margin: Land & Allen's 2nd Add'n. to Sylvan Beach, Land & Allen's 3rd Add'n. to Sylvan Beach, McKisson Acres.

Assessment Roll and Tax List of Real Property in the Town of Sylvan

Form 50 MILLER-DAVIS CO., MINNEAPOLIS

* Indicate Type of Property: R-Residential, C-Commercial, I-Industrial, U-Utility, F-Farm, L-Lakeshore, T-Timber, M-Mineral

Table with columns: IN WHOSE NAME ASSESSED, SUBDIVISION, No. School District, Indicate Home-Stead, Indicate Agri. or Res., Indicate Type of Property, TRUE AND FULL VALUATIONS (LAND, BUILDINGS, MACHINERY, TOTAL), ASSESSED VALUATIONS (RURAL, ALL OTHER, MACHINERY, Seasonal and Recreational Cabins, TOTAL ASSESSED VALUE), FINAL EQUALIZED VALUE.

Cass County, Minnesota, for Taxes for the Year 1962.

Table with columns: SOLD FOR TAXES, VALUATIONS BY SCHOOL DISTRICTS AS EQUALIZED BY DEPARTMENT OF TAXATION, Tax Including State Homestead, State Tax on Non-Homestead, SPECIAL TAXES, TOTAL TAXES, PAID, WHEN PAID, Number of Receipt, March Settlement 1963, June Settlement 1963, Penalty, November Settlement 1963, Penalty, Collections to First Monday in January 1964, Delinquent on First Monday in January 1964, Total Delinquent Tax and Penalty, REMARKS.

13-30, Village of Sylvan, North Sylvan Lake, Sylvan Beach, Sylvan Beach, Land & Allen's 1st Add'n. to Sylvan Beach

Land & Allen's 2nd Add'n. to Sylvan Beach, Land & Allen 3rd Add'n. to Sylvan Beach

Assessment Roll and Tax List of Real Property in the Town of Sylvan, Minnesota

Form 50 MILLER-DAVIS CO., MINNEAPOLIS

* Indicate Type of Property: R-Residential, C-Commercial, I-Industrial, U-Utility, F-Farm, L-Lakeshore, T-Timber, M-Mineral

Table with columns: IN WHOSE NAME ASSESSED, SUBDIVISION, No. School District, Indicate Home-Stead, Indicate Agri. or Seas. Recr., Indicate Type of Property, TRUE AND FULL VALUATIONS (LAND, BUILDINGS, MACHINERY, TOTAL), ASSESSED VALUATIONS (RURAL, ALL OTHER, MACHINERY, Seasonal and Recreational Cabins, TOTAL ASSESSED VALUE), FINAL EQUALIZED VALUE.

Cass County, Minnesota, for Taxes for the Year 1962.

Table with columns: SOLD FOR TAXES, VALUATIONS BY SCHOOL DISTRICTS AS EQUALIZED BY DEPARTMENT OF TAXATION, Tax Including State Homestead, State Tax on Non-Homestead, SPECIAL TAXES, TOTAL TAXES, PAID, WHEN PAID, Number of Receipt, March Settlement 1963, June Settlement 1963, Penalty, November Settlement 1963, Collections to First Monday in January 1964, Delinquent on First Monday in January 1964, Total Delinquent Tax and Penalty, REMARKS.

Shady Grove, Village of Sylvan, North Sylvan, Sylvan Beach, Sylvan Beach, Sylvan Beach, Land & Allen's 2nd Add'n, to Sylvan Beach, Land & Allen's 3rd Add'n, to Sylvan Beach, Land & Allen's 1st Add'n, to Sylvan Beach

Land & Allen 3rd Add'n, to Sylvan Beach, McKisson Acres

Assessment Roll and Tax List of Real Property in the Town of Sylvan

Form 5C - MILLER-DAVIS CO., MINNEAPOLIS

* Indicate Type of Property: R-Residential, C-Commercial, I-Industrial, U-Utility, F-Farm, L-Lakeshore, T-Timber, M-Mineral

Table with columns: IN WHOSE NAME ASSESSED, DESCRIPTION OF PROPERTY, TRUE AND FULL VALUATIONS, ASSESSED VALUATIONS, and FINAL EQUALIZED VALUE. Includes entries for Bernhard & Gladys Hinkelman, Victor L. and Vona H. Lohmann, and Earl M. and Alice J. Nelson.

Vertical text on the left margin: 183-30, Village of Sylvan, Land & Allen's 2nd Add'n to Sylvan Beach, North Sylvan Beach, Carolyn's Park, Sylvan Beach, Land & Allen's 1st Add'n to Sylvan Beach.

Cass County, Minnesota, for Taxes for the Year 1962.

Table with columns: VALUATIONS BY SCHOOL DISTRICTS AS EQUALIZED BY DEPARTMENT OF TAXATION, TAX INCLUDING STATE HOMESTEAD, SPECIAL TAXES, TOTAL TAXES, PAID, WHEN PAID, Number of Receipt, March Settlement, June Settlement, November Settlement, Collections to First Monday in January, Delinquent on First Monday in January, Total Delinquent Tax and Penalty, REMARKS. Includes handwritten notes and calculations.

Vertical text on the right margin: Land & Allen 3rd Add'n, McKisson Acres to Sylvan Beach.

