

Assessment & Tax list - 1959

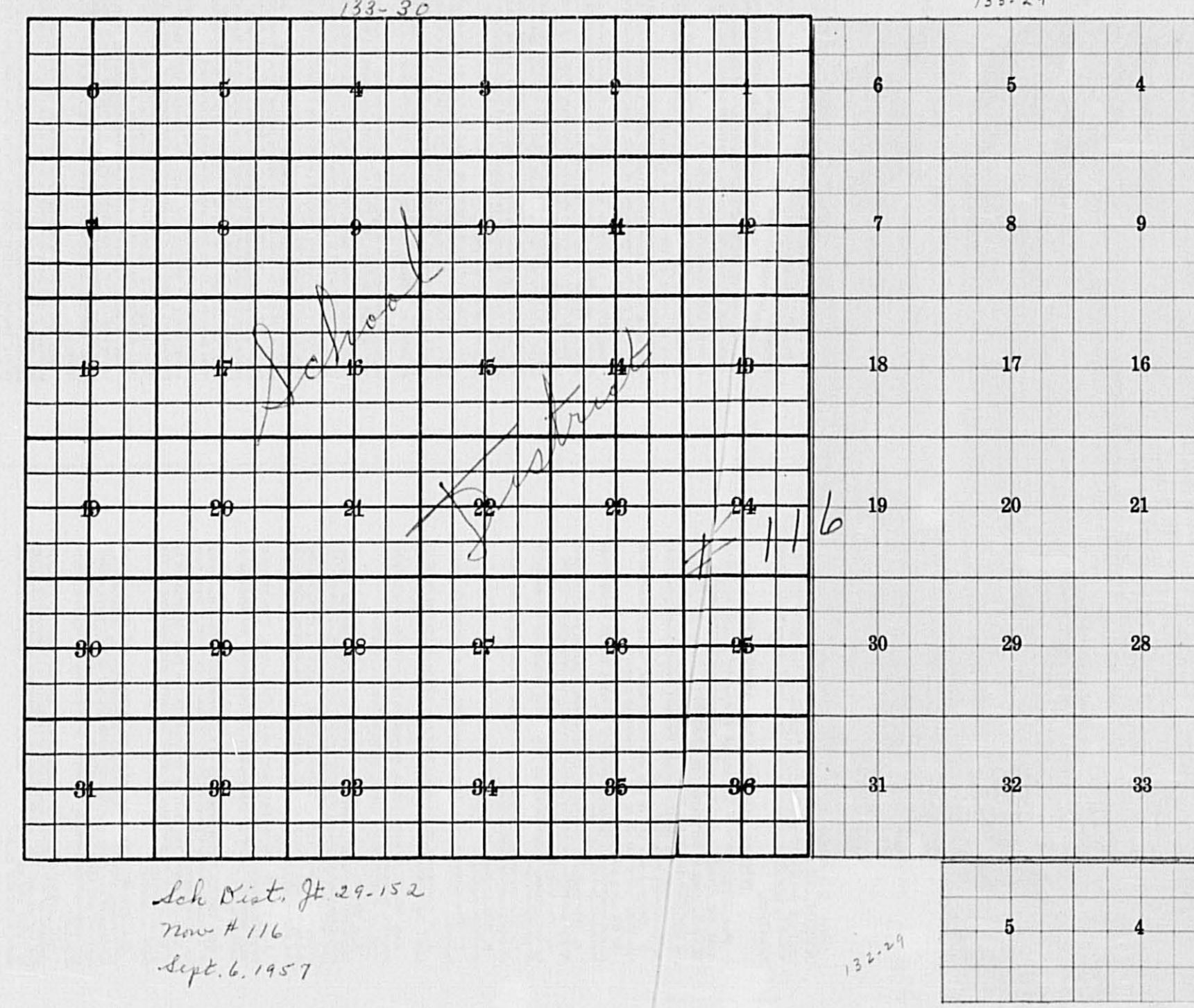
Sylvan

INDEX TO SECTIONS

Table with 2 columns: SECTION, PAGE. Lists sections 1 through 36.

For Convenience of Auditor in Showing Boundaries of School Districts

Township No. Range No. Mer. P. M.



Returns Showing Grain Received in or Handled by Elevators, Warehouses and Mills in the ... of ... in the ... County of ... for the Year Ending May 1, 1959.

Main data table with columns: NAMES OF OWNERS, ADDRESS, Bushels of Wheat, Soy Beans, Flax, Total No. of Bushels of Wheat, Soy Beans and Flax, Tax of 1/2 Mill per Bushel (Dollars, Cts.), Bushels of Corn, Barley, Rye, Oats, Buckwheat, Other Grains, Total No. Bushels of Corn, Barley, Rye, Oats, Buckwheat and all Other Grains, Tax of 1/4 Mill Per Bushel (Dollars, Cts.), Total Tax (Dollars, Cts.), REMARKS.

Note \* Assessors will not fill these Columns

Vertical text on the right margin: Land & Allen's 1st, Sylvan Beach, 133-30, Sylvan Beach.









Assessment Roll and Tax List of Real Property in the Town of Sylvan, Minnesota

Cass County, Minnesota, for Taxes for the Year 1959.

133-29

Form 302 (MAY 1958) MINN. STAT. ANN. § 261.01

Table with columns: IN WHOSE NAME ASSESSED, TO WHOM TRANSFERRED, DESCRIPTION OF PROPERTY, TRUE AND FULL VALUATIONS, ASSESSED VALUATIONS, FINAL EQUALIZED VALUE.

Table with columns: VALUATIONS BY SCHOOL DISTRICTS AS EQUALIZED BY DEPARTMENT OF TAXATION, TAXES, PAID, WHEN PAID, Number of Receipt, March Settlement, June Settlement, November Settlement, Collections to First Monday in January 1961, Delinquent on First Monday in January 1961, Total Delinquent Tax and Penalty, REMARKS.

Land & Allen's 1st Addn to Sylvan Beach 133-30 Page of Sylvan or th Sylvan Park Sylvan Beach





Assessment Roll and Tax List of Real Property in the Town of Sylvan, Cass County, Minnesota, for Taxes for the Year 1959.

Cass County, Minnesota, for Taxes for the Year 1959.

133-29

Table with columns for Property Description, Valuations, Taxes, and Remarks. Includes handwritten entries for John & Myrtle R. Gratrud, Charles G. & Caroline Peterson, Edna O. Lindquist, Ella Nordine, and Brower Peterson.

133-30 Sylvan Beach

Assessment Roll and Tax List of Real Property in the Town of Sylvan, Cass County, Minnesota, for Taxes for the Year 1959.

Cass County, Minnesota, for Taxes for the Year 1959.

Form 502-503-504-505-506-507-508-509-510-511-512-513-514-515-516-517-518-519-520-521-522-523-524-525-526-527-528-529-530-531-532-533-534-535-536-537-538-539-540-541-542-543-544-545-546-547-548-549-550-551-552-553-554-555-556-557-558-559-560-561-562-563-564-565-566-567-568-569-570-571-572-573-574-575-576-577-578-579-580-581-582-583-584-585-586-587-588-589-590-591-592-593-594-595-596-597-598-599-600-601-602-603-604-605-606-607-608-609-610-611-612-613-614-615-616-617-618-619-620-621-622-623-624-625-626-627-628-629-630-631-632-633-634-635-636-637-638-639-640-641-642-643-644-645-646-647-648-649-650-651-652-653-654-655-656-657-658-659-660-661-662-663-664-665-666-667-668-669-670-671-672-673-674-675-676-677-678-679-680-681-682-683-684-685-686-687-688-689-690-691-692-693-694-695-696-697-698-699-700-701-702-703-704-705-706-707-708-709-710-711-712-713-714-715-716-717-718-719-720-721-722-723-724-725-726-727-728-729-730-731-732-733-734-735-736-737-738-739-740-741-742-743-744-745-746-747-748-749-750-751-752-753-754-755-756-757-758-759-760-761-762-763-764-765-766-767-768-769-770-771-772-773-774-775-776-777-778-779-780-781-782-783-784-785-786-787-788-789-790-791-792-793-794-795-796-797-798-799-800-801-802-803-804-805-806-807-808-809-810-811-812-813-814-815-816-817-818-819-820-821-822-823-824-825-826-827-828-829-830-831-832-833-834-835-836-837-838-839-840-841-842-843-844-845-846-847-848-849-850-851-852-853-854-855-856-857-858-859-860-861-862-863-864-865-866-867-868-869-870-871-872-873-874-875-876-877-878-879-880-881-882-883-884-885-886-887-888-889-890-891-892-893-894-895-896-897-898-899-900-901-902-903-904-905-906-907-908-909-910-911-912-913-914-915-916-917-918-919-920-921-922-923-924-925-926-927-928-929-930-931-932-933-934-935-936-937-938-939-940-941-942-943-944-945-946-947-948-949-950-951-952-953-954-955-956-957-958-959-960-961-962-963-964-965-966-967-968-969-970-971-972-973-974-975-976-977-978-979-980-981-982-983-984-985-986-987-988-989-990-991-992-993-994-995-996-997-998-999-1000

Table with columns: IN WHOSE NAME ASSESSED, TO WHOM TRANSFERRED, DESCRIPTION OF PROPERTY, TRUE AND FULL VALUATIONS, ASSESSED VALUATIONS, VALUATIONS BY SCHOOL DISTRICTS AS EQUALIZED BY DEPARTMENT OF TAXATION, SOLD FOR TAXES, SPECIAL TAXES, TOTAL TAXES, PAID, WHEN PAID, Number of Receipt, March Settlement 1960, June Settlement 1960, Penalty, November Settlement 1960, Penalty, Collections to First Monday in January 1961, Penalty, Delinquent on First Monday in January 1961, Total Delinquent Tax and Penalty, REMARKS.

Brower + Laura Peterson

Edith O. Lindquist

Ella Nordine

Barney + Edwin Ostenson

Barney + Edwin Ostenson

Barney + Edwin Ostenson

State of Minnesota

State of Minnesota

State of Minnesota

State of Minnesota

State of Minnesota

State of Minnesota

State of Minnesota

State of Minnesota

State of Minnesota

133-29, 133-30, Sylvan Beach, Sylvan Beach

Assessment Roll and Tax List of Real Property in the Town of Sylvan

Indicate Type of Property: R-Residential, C-Commercial, I-Industrial, U-Utility, F-Farm, L-Lakeshore, T-Timber, M-Mineral

Cass County, Minnesota, for Taxes for the Year 1959.

Table with columns: IN WHOSE NAME ASSESSED, TO WHOM TRANSFERRED, DESCRIPTION OF PROPERTY, TRUE AND FULL VALUATIONS, ASSESSED VALUATIONS, VALUATIONS BY SCHOOL DISTRICTS AS EQUALIZED BY DEPARTMENT OF TAXATION, TAXES, PAID, WHEN PAID, etc.

133-29

133-30

Beach 133-30 Legend of Sylvan or Sylvan you...



Assessment Roll and Tax List of Real Property in the Town of Sylvan

Form SCD MILLER-DAVIS CO., MINNEAPOLIS

Indicate Type of Property: R-Residential, C-Commercial, I-Industrial, U-Utility, F-Farm, L-Lakeshore, T-Timber, M-Mineral

Cass County, Minnesota, for Taxes for the Year 1959.

Table with columns: IN WHOSE NAME ASSESSED, TO WHOM TRANSFERRED, DESCRIPTION OF PROPERTY, TRUE AND FULL VALUATIONS, ASSESSED VALUATIONS, VALUATIONS BY SCHOOL DISTRICTS AS EQUALIZED BY DEPARTMENT OF TAXATION, SOLD FOR TAXES, SPECIAL TAXES, TOTAL TAXES, PAID, WHEN PAID, Number of Receipt, March Settlement 1960, June Settlement 1960, Penalty, November Settlement 1960, Penalty, Collections to First Monday in January 1961, Delinquent on First Monday in January 1961, Total Delinquent Tax and Penalty, REMARKS.

133-2

133-30

Page of Sylvan orth Sylvan ... Sylvan Beach ...

Assessment Roll and Tax List of Real Property in the Town of Sylvan

Form SCD MILLER-DAVIS CO., MINNEAPOLIS

All that part of NE 1/4 of NE 1/4 Sec. 17-133-29 lying above 1186' contour line running across said tract, which is 1186' above the sea level elevation as established by the Mississippi River Commission, being approximately 20 acs. in the Northern Pacific Right of Way, and a certain one acre tract owned and occupied by School District #1 of Cass County and excepting the south 15 rods of the E 1/2 of NE 1/4.

Indicate Type of Property: R-Residential, C-Commercial, I-Industrial, U-Utility, F-Farm, L-Lakeshore, T-Timber, M-Mineral

Table with columns: PROPERTY (Sec. or Lot, Town or Block, Rng., Acres of Land), TRUE AND FULL VALUATIONS (LAND, BUILDINGS, MACHINERY, TOTAL), ASSESSED VALUATIONS (RURAL, ALL OTHER, MACHINERY, TOTAL ASSESSED VALUE), FINAL EQUALIZED VALUE.

IN WHOSE NAME ASSESSED: John A. Miller, Minnesota Power & Light Co., Home, Alvin + Emily J. Sindall, Cupena Range Power Co., Martin J. + Bertha D. Phillips, Roger Peterson, Guy S. + Madel Smith, Roger R. + Laura Peterson, Minnesota Power & Light Co., Roger R. + Laura Peterson, State of Minnesota, Minnesota Power & Light Co., Albert J. Cunningham, Minnesota Power & Light Co., Minnesota Power & Light Co., Minnesota Power & Light Co., Minnesota Power & Light Co., Minnesota Power & Light Co.

(Continued on Next Page)

52732

Cass County, Minnesota, for Taxes for the Year 1959.

Table with columns: VALUATIONS BY SCHOOL DISTRICTS AS EQUALIZED BY DEPARTMENT OF TAXATION (District No., Rate, etc.), Tax including State Homestead, State Tax on Non-Homestead, SPECIAL TAXES, TOTAL TAXES, PAID, WHEN PAID, Number of Receipt, March Settlement, June Settlement, November Settlement, Penalty, Collections to First Monday in January 1961, Delinquent on First Monday in January 1961, Total Delinquent Tax and Penalty, REMARKS.

SOLD FOR TAXES: 1, 2, 3, 4, 5, 6, 7, 8, 9, 10, 11, 12, 13, 14, 15, 16, 17, 18, 19, 20

Summary totals for taxes and payments.

9163

15322

15379

9455

7862

9162

9912

133-30

Legal of Sylvan for Sylvan you...

Sylvan Beach







Assessment Roll and Tax List of Real Property in the Town of Sylvan

Indicate Type of Property: R-Residential, C-Commercial, I-Industrial, U-Utility, F-Farm, L-Lakeshore, T-Timber, M-Mineral

Form SCD... 1960...  
Arwald C. & Dorothy Latta  
John & Wilma Zimmerman  
L. B. & Bonnie Lindberg

Table with columns: DESCRIPTION OF PROPERTY, TRUE AND FULL VALUATIONS, ASSESSED VALUATIONS, FINAL EQUALIZED VALUE. Includes handwritten notes and property details.

Cass County, Minnesota, for Taxes for the Year 1959.

Table with columns: SOLD FOR TAXES, VALUATIONS BY SCHOOL DISTRICTS AS EQUALIZED BY DEPARTMENT OF TAXATION, Tax including State Homestead, SPECIAL TAXES, TOTAL TAXES, PAID, WHEN PAID, Number of Receipt, March Settlement 1960, June Settlement 1960, November Settlement 1960, Collections to First Monday in January 1961, Delinquent on First Monday in January 1961, Total Delinquent Tax and Penalty, REMARKS.

Minnesota Power & Light Co.  
Roy G. & Eva Shon  
Minnesota Power & Light Co.  
J. J. & Ellen J. Marlow  
C. L. & Verna E. Stanley  
Minnesota Power & Light Co.  
J. J. & Ellen J. Marlow  
Minnesota Power & Light Co.  
Arwald C. & Dorothy Latta  
Navilleus Land Co.  
Minnesota Power & Light Co.  
Navilleus Land Co.  
George W. & Betty E. Franklin  
John & Wilma Zimmerman  
L. B. & Bonnie Lindberg

1st  
Beach  
133-30  
Sylvan  
Village of Sylvan  
Sylvan Beach





Assessment Roll and Tax List of Real Property in the Town of Sylvan

Form SCD

\* Indicate Type of Property: R-Residential, C-Commercial, I-Industrial, U-Utility, F-Farm, L-Lakeshore, T-Timber, M-Mineral

Main table with columns: IN WHOSE NAME ASSESSED, TO WHOM TRANSFERRED, DESCRIPTION OF PROPERTY, TRUE AND FULL VALUATIONS, ASSESSED VALUATIONS, TAXES, PAID, WHEN PAID, Number of Receipt, etc.

(Continued on Next Page)

Vertical text on the far right edge of the page, including page numbers and property details.



Pl of Bayside 1881

DEED 182

#7 Prime

D=181

#6 H+C Judd

#5 H.B. Blackford

Blackford #4

Roberts #3

Viking #8

Davis #7

#1

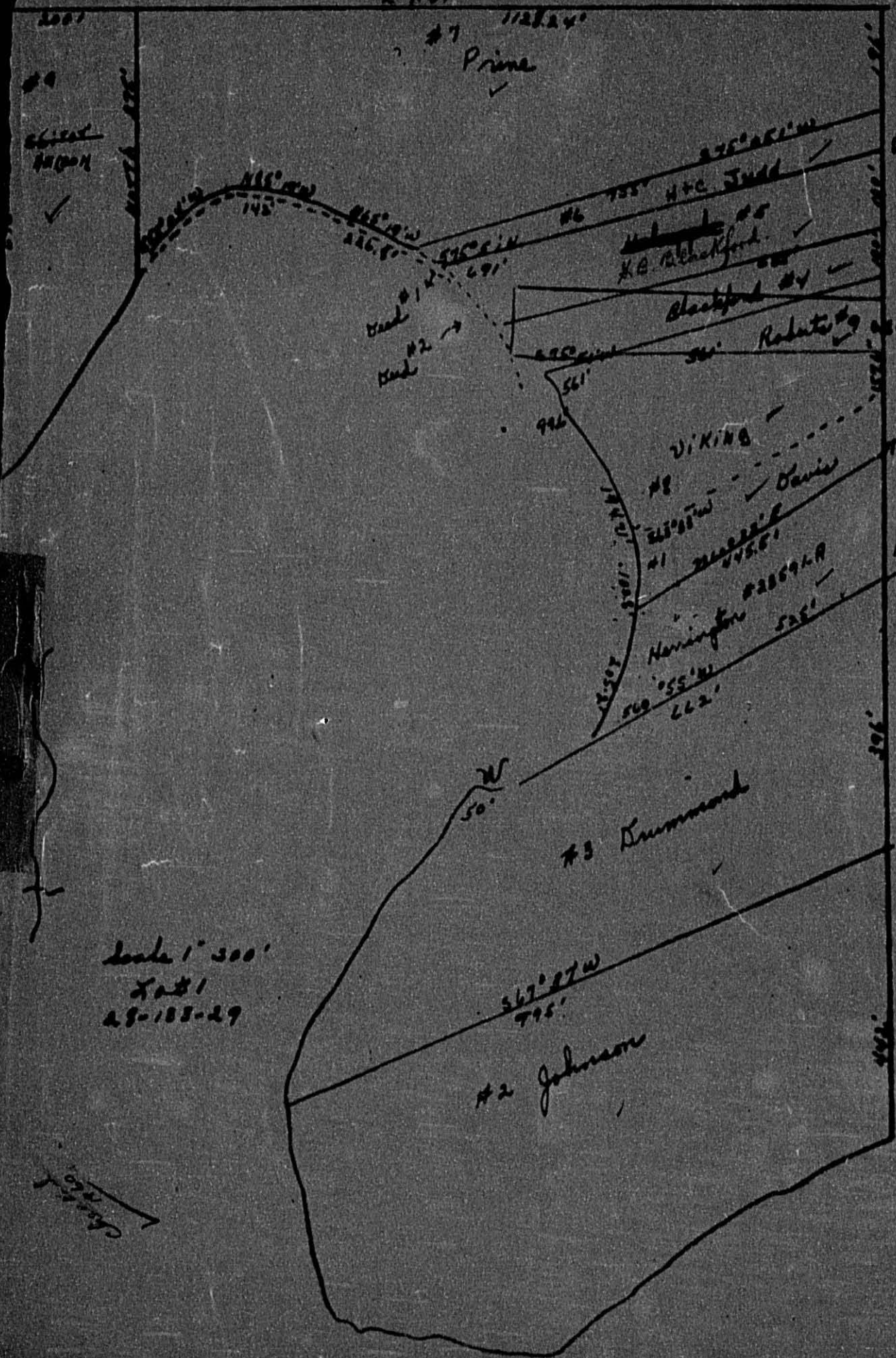
Harrington #20694A

#3 Drummond

#2 Johnson

Scale 1" = 500'  
#1  
28-188-29

Chart



Assessment Roll and Tax List of Real Property in the Town of Sylvan, Cass County, Minnesota, for Taxes for the Year 1959.

Cass County, Minnesota, for Taxes for the Year 1959.

Form SCD MILLER-DAVIS CO., MINNEAPOLIS. \* Indicate Type of Property: R-Residential, C-Commercial, I-Industrial, U-Utility, F-Farm, L-Lakeshore, T-Timber, M-Mineral

Table with columns: IN WHOSE NAME ASSESSED, TO WHOM TRANSFERRED, DESCRIPTION OF PROPERTY, TRUE AND FULL VALUATIONS, ASSESSED VALUATIONS, VALUATIONS BY SCHOOL DISTRICTS AS EQUALIZED BY DEPARTMENT OF TAXATION, SOLD FOR TAXES, SPECIAL TAXES, TOTAL TAXES, PAID, WHEN PAID, Number of Receipt, March Settlement 1960, June Settlement 1960, November Settlement 1960, Penalty, Collections to First Monday in January 1961, Delinquent on First Monday in January 1961, Total Delinquent Tax and Penalty, REMARKS.

Adolph + Ethel Staub
Dewey McMairn
"
"
Adolph Staub

M. W. Paper Co.
"
"
"
"
"

William Benson
"
"
"
"
"

John E. + Vivian S. Eastman
"
"
"
"
"

133-30
Sylvan
Beech
Sylvan







Assessment Roll and Tax List of Real Property in the Town of Sylvan

Indicate Type of Property: R-Residential, C-Commercial, I-Industrial, U-Utility, F-Farm, L-Lakeshore, T-Timber, M-Mineral

Form 5 CD MILLER-DAVIS CO., MINNEAPOLIS

DESCRIPTION OF PROPERTY

TRUE AND FULL VALUATIONS

ASSESSED VALUATIONS

Table with columns for subdivision, acreage, school district, valuation types (Rural, All Other), and total assessed value.

Main assessment roll table listing property owners, addresses, and valuation details. Includes entries for Michael A. + Olga Chamberlain, Joseph Kauppel, Edward + Susan Heikkinen, etc.

Continued on next page

Cass County, Minnesota, for Taxes for the Year 1959.

Tax payment schedule table with columns for school districts, taxes (SPECIAL, TOTAL), and payment dates (MAY 1 3 1960, etc.).

No Tax 1959

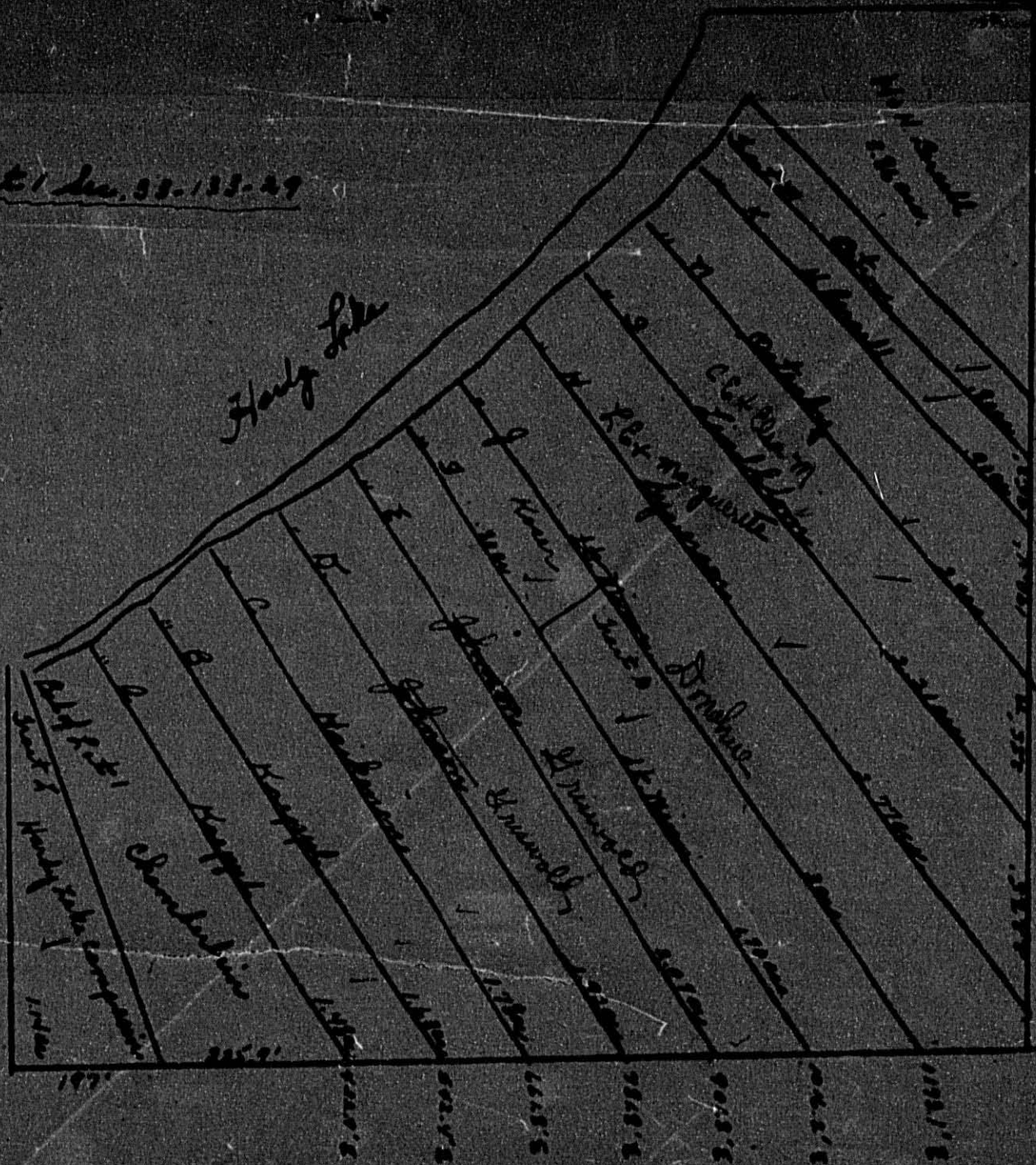
Handwritten calculations: 67, 142, 544, 726

Vertical text on the right edge: Land, Sylvan, Beach, etc.

Lot 1 Sec. 53-133-29

checked  
3-24-60

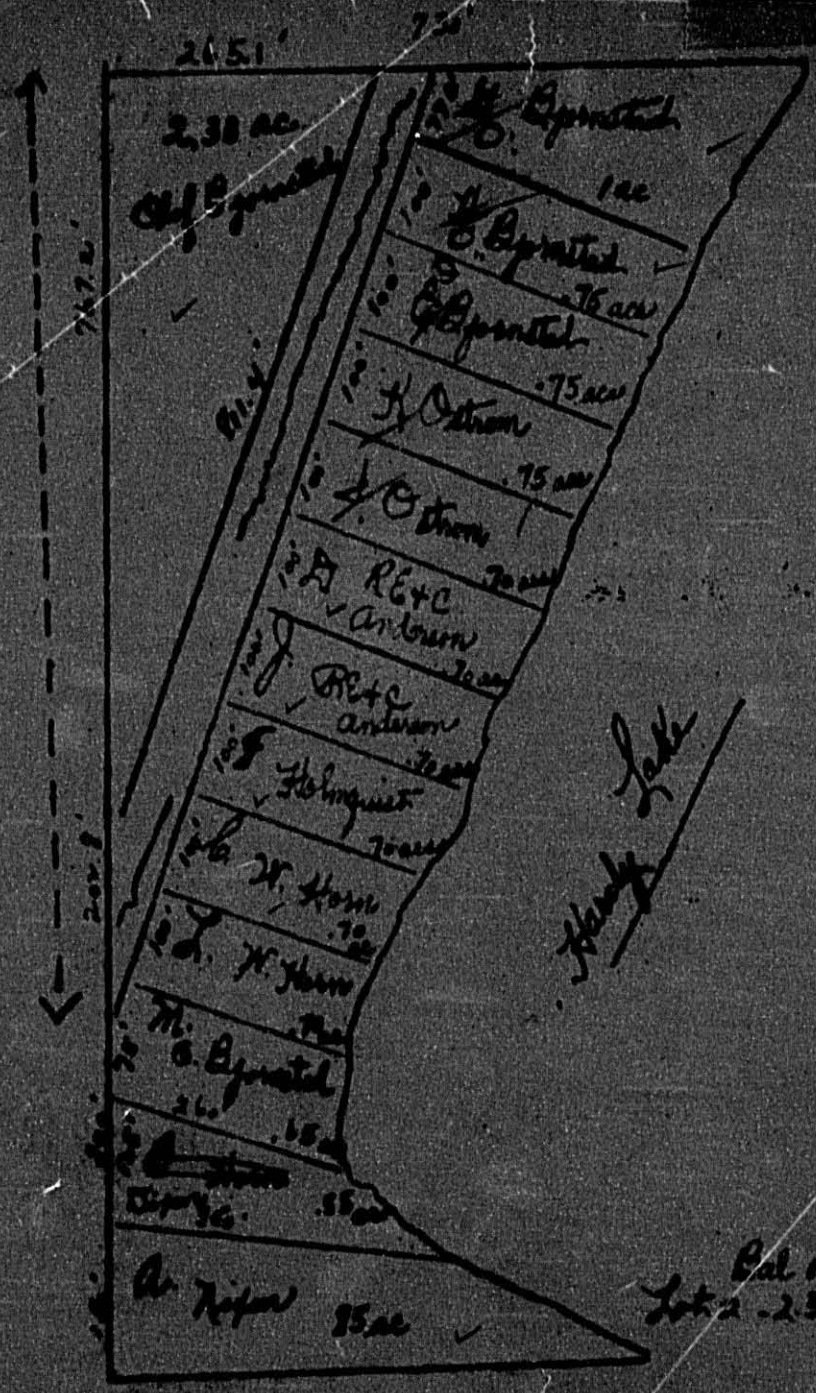
Holy Lake





SCALE " 200  
Govt Lot 2 Sec 33-193-29

This map drawn from  
Reg of Deeds Records  
3-9-53



- A. Nison
- B. ~~John~~ Nison
- C. W. Horn
- D. R.E. + Anderson
- E. Bjornstad
- F. Holmquist
- G. Bjornstad
- H. Bjornstad
- I. H. + A. Ostrom
- J. R.E. + Anderson
- K. H. N. Ostrom
- L. L. W. Horn
- M. Bjornstad
- Bjornstad

Cal of  
Lot 2 - 2.33 ac

11.83 ac  
3.02 ac road

sketch  
3-1-53



Assessment Roll and Tax List of Real Property in the Town of Sylvan, Cass County, Minnesota, for Taxes for the Year 1959.

Cass County, Minnesota, for Taxes for the Year 1959.

Form 500-1-58 (REV. 5-58)

Indicate Type of Property: R-Residential, C-Commercial, I-Industrial, U-Utility, F-Farm, L-Lakeshore, T-Timber, M-Mineral

Table with columns for IN WHOSE NAME ASSESSED, TO WHOM TRANSFERRED, DESCRIPTION OF PROPERTY (SUBDIVISION, Acres, 100ths), TRUE AND FULL VALUATIONS (LAND, BUILDINGS, MACHINERY, TOTAL), ASSESSED VALUATIONS (RURAL, ALL OTHER, TOTAL ASSESSED VALUE, FINAL EQUALIZED VALUE), VALUATIONS BY SCHOOL DISTRICTS AS EQUALIZED BY DEPARTMENT OF TAXATION, TAXES (SOLD FOR TAXES, District No., Rate, Mills, Tax including State Homestead, State Tax on Non-Homestead, SPECIAL TAXES, TOTAL TAXES), PAID (PAID, WHEN PAID), and REMARKS.

M.S. & Anne Rasmuson  
Ole Peterson & Adolph Staub, Warden's Dist each  
Gordon Rasmuson  
" "  
" "

133-30

1st  
2nd  
3rd  
4th  
5th  
6th  
7th  
8th  
9th  
10th  
11th  
12th  
13th  
14th  
15th  
16th  
17th  
18th  
19th  
20th











Assessment Roll and Tax List of Real Property in the Town of Sylvan, Cass County, Minnesota, for Taxes for the Year 1959.

Form 5CD MILLER-DAVIS CO., MINNEAPOLIS. Indicate Type of Property: R-Residential, C-Commercial, I-Industrial, U-Utility, F-Farm, L-Lakeshore, T-Timber, M-Mineral

133-29, 133-30

Main table with columns for 'DESCRIPTION OF PROPERTY', 'TRUE AND FULL VALUATIONS', 'ASSESSED VALUATIONS', 'VALUATIONS BY SCHOOL DISTRICTS AS EQUALIZED BY DEPARTMENT OF TAXATION', and 'PAID'.

Vertical text on the right edge: 1st Beach, SYLVAN VILLAGE OF SYLVAN ON THE SYLVAN JOHNSON BEACH, SYLVAN BEACH

Assessment Roll and Tax List of Real Property in the Town of Sylvan

Form 500 MILLER-DAVIS CO., MINNEAPOLIS

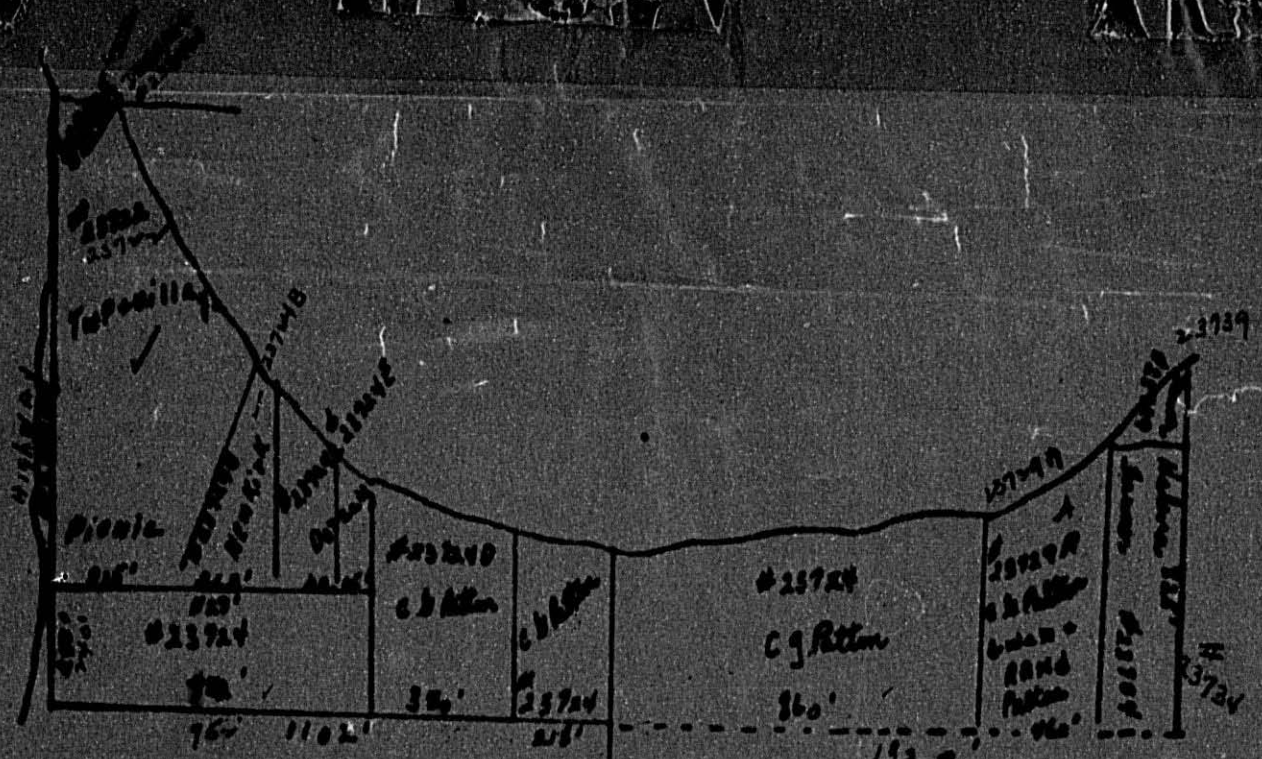
Indicate Type of Property: R-Residential, C-Commercial, I-Industrial, U-Utility, F-Farm, L-Lakeshore, T-Timber, M-Mineral

Cass County, Minnesota, for Taxes for the Year 1959.

Table with columns: IN WHOSE NAME ASSESSED, TO WHOM TRANSFERRED, DESCRIPTION OF PROPERTY, TRUE AND FULL VALUATIONS, ASSESSED VALUATIONS, VALUATIONS BY SCHOOL DISTRICTS AS EQUALIZED BY DEPARTMENT OF TAXATION, TAXES, PAID, WHEN PAID, Number of Receipt, March Settlement 1960, June Settlement 1960, Penalty, November Settlement 1960, Penalty, Collections to First Monday in January 1961, Penalty, Delinquent on First Monday in January 1961, Total Delinquent Tax and Penalty, REMARKS.

133-29 133-30

Land & Addn... Village of Sylvan on Sylvan Beach



5-133-30

629' of Lot 2  
 20860' of Lot 1 N. of extend  
 at 60' 4' lines

# 28725  
 R. A. Cole  
 40 acres

1320'

Assessment Roll and Tax List of Real Property in the Town of Sylvan

Form 50D MILLER-DAVIS CO., MINNEAPOLIS

\* Indicate Type of Property: R-Residential, C-Commercial, I-Industrial, U-Utility, F-Farm, L-Lakeshore, T-Timber, M-Mineral

133-29 133-30

Table with columns: IN WHOSE NAME ASSESSED, TO WHOM TRANSFERRED, DESCRIPTION OF PROPERTY, TRUE AND FULL VALUATIONS, ASSESSED VALUATIONS, FINAL EQUALIZED VALUE. Includes handwritten entries for Harriet S. Derauf, Richard E. Derauf, Paul O. Berglund, N.W. Paper Co., and Ralph A. & Cora A. Cole.

Cass County, Minnesota, for Taxes for the Year 1959.

Table with columns: SOLD FOR TAXES, VALUATIONS BY SCHOOL DISTRICTS AS EQUALIZED BY DEPARTMENT OF TAXATION, SPECIAL TAXES, TOTAL TAXES, PAID, WHEN PAID, Number of Receipt, March Settlement 1960, June Settlement 1960, Penalty, November Settlement 1960, Penalty, Collections to First Monday in January 1961, Penalty, Delinquent on First Monday in January 1961, Total Delinquent Tax and Penalty, REMARKS. Includes handwritten tax amounts and payment dates.

1st 2nd 3rd 4th 5th 6th 7th 8th 9th 10th 11th 12th 13th 14th 15th 16th 17th 18th 19th 20th 21st 22nd 23rd 24th 25th 26th 27th 28th 29th 30th 31st

Assessment Roll and Tax List of Real Property in the Town of Sylvan

Cass County, Minnesota, for Taxes for the Year 1959.

Form SCD 1958-59 REVISED, MINNESOTA

Indicate Type of Property: R-Residential, C-Commercial, I-Industrial, U-Utility, F-Farm, L-Lakeshore, T-Timber, M-Mineral

Main table with columns: IN WHOSE NAME ASSESSED, TO WHOM TRANSFERRED, DESCRIPTION OF PROPERTY, TRUE AND FULL VALUATIONS, ASSESSED VALUATIONS, VALUATIONS BY SCHOOL DISTRICTS AS EQUALIZED BY DEPARTMENT OF TAXATION, TAXES, PAID, WHEN PAID, Number of Receipt, March Settlement, June Settlement, November Settlement, Collections to First Monday in January 1961, Delinquent on First Monday in January 1961, Total Delinquent Tax and Penalty, REMARKS.

132-29, 133-29, 133-30

Lead & Addn to 1st Beach, SYLVAN VILLAGE of SYLVAN for Sylvan, 1st Beach, 1st Beach, 1st Beach, 1st Beach, 1st Beach



Assessment Roll and Tax List of Real Property in the Town of Sylvan, Cass County, Minnesota, for Taxes for the Year 1959.

Cass County, Minnesota, for Taxes for the Year 1959.

Form 503 (2-20-58) MINN. STAT. 263.01, 263.02

\* Indicate Type of Property: R-Residential, C-Commercial, I-Industrial, U-Utility, F-Farm, L-Lakeshore, T-Timber, M-Mineral

Main table with columns: IN WHOSE NAME ASSESSED, TO WHOM TRANSFERRED, DESCRIPTION OF PROPERTY, TRUE AND FULL VALUATIONS, ASSESSED VALUATIONS (RURAL, ALL OTHER, MACHINERY), TOTAL ASSESSED VALUE, and FINAL EQUALIZED VALUE.

Tax payment table with columns: SOLD FOR TAXES, VALUATIONS BY SCHOOL DISTRICTS AS EQUALIZED BY DEPARTMENT OF TAXATION, TAX INCLUDING STATE HOMESTEAD, STATE TAX ON NON-HOMESTEAD, SPECIAL TAXES, TOTAL TAXES, PAID, WHEN PAID, Number of Receipt, March Settlement, June Settlement, Penalty, November Settlement, Penalty, Collections to First Monday in January, Delinquent on First Monday in January, Total Delinquent Tax and Penalty, REMARKS.

133-29

133-30

133-29 133-30 133-31 133-32 133-33 133-34 133-35 133-36 133-37 133-38 133-39 133-40 133-41 133-42 133-43 133-44 133-45 133-46 133-47 133-48 133-49 133-50







Assessment Roll and Tax List of Real Property in the Town of Sylvan

Cass County, Minnesota, for Taxes for the Year 1959.

Form SCD MILLER-DAVIS CO., MINNEAPOLIS. \* Indicate Type of Property: R-Residential, C-Commercial, I-Industrial, U-Utility, F-Farm, L-Lakeshore, T-Timber, M-Mineral

Table with columns: IN WHOSE NAME ASSESSED, TO WHOM TRANSFERRED, DESCRIPTION OF PROPERTY, TRUE AND FULL VALUATIONS, ASSESSED VALUATIONS, VALUATIONS BY SCHOOL DISTRICTS AS EQUALIZED BY DEPARTMENT OF TAXATION, SOLD FOR TAXES, PAID, WHEN PAID, Number of Receipt, March Settlement 1960, June Settlement 1960, November Settlement 1960, Collections to First Monday in January 1961, Delinquent on First Monday in January 1961, Total Delinquent Tax and Penalty, REMARKS.

133-29

133-30

Land & Add'l. Sylvan Beach Sch. Village of Sylvan for th Sylvan you

Assessment Roll and Tax List of Real Property in the Town of Sylvan

Indicate Type of Property: R-Residential, C-Commercial, I-Industrial, U-Utility, F-Farm, L-Lakeshore, T-Timber, M-Mineral

Cass County, Minnesota, for Taxes for the Year 1959.

Table with columns: IN WHOSE NAME ASSESSED, TO WHOM TRANSFERRED, DESCRIPTION OF PROPERTY, TRUE AND FULL VALUATIONS, ASSESSED VALUATIONS, VALUATIONS BY SCHOOL DISTRICTS AS EQUALIZED BY DEPARTMENT OF TAXATION, SOLD FOR TAXES, SPECIAL TAXES, TOTAL TAXES, PAID, WHEN PAID, Number of Receipt, March Settlement 1960, June Settlement 1960, November Settlement 1960, Collections to First Monday in January 1961, Delinquent on First Monday in January 1961, Total Delinquent Tax and Penalty, REMARKS.

132-29, 133-30

132-29, 133-30, Village of Sylvan, Sylvan Beach, Sylvan Beach

Assessment Roll and Tax List of Real Property in the Town of Sylvan

Indicate Type of Property: R-Residential, C-Commercial, I-Industrial, U-Utility, F-Farm, L-Lakeshore, T-Timber, M-Mineral

Cass County, Minnesota, for Taxes for the Year 1959.

Table with columns: IN WHOSE NAME ASSESSED, TO WHOM TRANSFERRED, DESCRIPTION OF PROPERTY, TRUE AND FULL VALUATIONS, ASSESSED VALUATIONS, VALUATIONS BY SCHOOL DISTRICTS AS EQUALIZED BY DEPARTMENT OF TAXATION, SOLD FOR TAXES, PAID, WHEN PAID, etc.

Continued on next Page

Vertical text on the right edge of the page, including 'Village of Sylvan' and 'Beach'.

Assessment Roll and Tax List of Real Property in the Town of Sylvan, Cass County, Minnesota, for Taxes for the Year 1959.

Form 5CD MILLER-DAVIS CO., MINNEAPOLIS

\* Indicate Type of Property: R-Residential, C-Commercial, I-Industrial, U-Utility, F-Farm, L-Lakeshore, T-Timber, M-Mineral

Table with columns: IN WHOSE NAME ASSESSED, TO WHOM TRANSFERRED, DESCRIPTION OF PROPERTY, TRUE AND FULL VALUATIONS, ASSESSED VALUATIONS, and FINAL EQUALIZED VALUE.

Cass County, Minnesota, for Taxes for the Year 1959.

Table with columns: VALUATIONS BY SCHOOL DISTRICTS AS EQUALIZED BY DEPARTMENT OF TAXATION, SOLD FOR TAXES, SPECIAL TAXES, TOTAL TAXES, PAID, WHEN PAID, and REMARKS.

133-29 132-29 133-30

1st 2nd 3rd 4th 5th 6th 7th 8th 9th 10th 11th 12th 13th 14th 15th 16th 17th 18th 19th 20th



Assessment Roll and Tax List of Real Property in the Town of Sylvan, Cass County, Minnesota, for Taxes for the Year 1959.

Form SCD MILLER-DAVIS CO., MINNEAPOLIS. \* Indicate Type of Property: R-Residential, C-Commercial, I-Industrial, U-Utility, F-Farm, L-Lakeshore, T-Timber, M-Mineral

Table with columns: IN WHOSE NAME ASSESSED, TO WHOM TRANSFERRED, DESCRIPTION OF PROPERTY, TRUE AND FULL VALUATIONS, ASSESSED VALUATIONS, and FINAL EQUALIZED VALUE. Includes entries for John J. Parks, Ida Anderson, State of Minnesota, and Clarence H. Sliter.

Cass County, Minnesota, for Taxes for the Year 1959.

Table with columns: SOLD FOR TAXES, VALUATIONS BY SCHOOL DISTRICTS AS EQUALIZED BY DEPARTMENT OF TAXATION, SPECIAL TAXES, TOTAL TAXES, PAID, WHEN PAID, Number of Receipt, March Settlement 1960, June Settlement 1960, November Settlement 1960, Collections to First Monday in January 1961, Delinquent on First Monday in January 1961, Total Delinquent Tax and Penalty, REMARKS. Includes handwritten notes and dates like 'PAID IN FULL APR 27 1960'.

133-29 133-30

Land & ... Sylvan Beach ...

Assessment Roll and Tax List of Real Property in the Town of Sylvan

Cass County, Minnesota, for Taxes for the Year 1959.

Form 30D ... \* Indicate Type of Property: R-Residential, C-Commercial, I-Industrial, U-Utility, F-Farm, L-Lakeshore, T-Timber, M-Mineral

Table with columns: IN WHOSE NAME ASSESSED, TO WHOM TRANSFERRED, DESCRIPTION OF PROPERTY, TRUE AND FULL VALUATIONS, ASSESSED VALUATIONS, and FINAL EQUALIZED VALUE.

Table with columns: VALUATIONS BY SCHOOL DISTRICTS AS EQUALIZED BY DEPARTMENT OF TAXATION, TAX including State Homestead, State Tax on Non-Homestead, SPECIAL TAXES, TOTAL TAXES, PAID, WHEN PAID, Number of Receipt, March Settlement 1960, June Settlement 1960, November Settlement 1960, Collections to First Monday in January 1961, Delinquent on First Monday in January 1961, Total Delinquent Tax and Penalty, REMARKS.

132-29 133-29 133-30

Land & Addn. 1st Beach 1st Village of Sylvan North Sylvan No. 2nd 3rd 4th 5th 6th 7th 8th 9th 10th 11th 12th 13th 14th 15th 16th 17th 18th 19th 20th

Assessment Roll and Tax List of Real Property in the Town of Sylvan

Indicate Type of Property: R-Residential, C-Commercial, I-Industrial, U-Utility, F-Farm, L-Lakeshore, T-Timber, M-Mineral

Cass County, Minnesota, for Taxes for the Year 1959.

Form 500

Main table with columns: IN WHOSE NAME ASSESSED, TO WHOM TRANSFERRED, DESCRIPTION OF PROPERTY, TRUE AND FULL VALUATIONS, ASSESSED VALUATIONS, VALUATIONS BY SCHOOL DISTRICTS AS EQUALIZED BY DEPARTMENT OF TAXATION, SOLD FOR TAXES, SPECIAL TAXES, TOTAL TAXES, PAID, WHEN PAID, Number of Receipt, March Settlement 1960, June Settlement 1960, Penalty, November Settlement 1960, Penalty, Collections to First Monday in January 1961, Penalty, Delinquent on First Monday in January 1961, Total Delinquent Tax and Penalty, REMARKS.

132-29, 133-29, 133-30

Land & ... Sylvan Beach ... Village of Sylvan ...



Assessment Roll and Tax List of Real Property in the Town of Sylvan

Indicate Type of Property: R-Residential, C-Commercial, I-Industrial, U-Utility, F-Farm, L-Lakeshore, T-Timber, M-Mineral

Cass County, Minnesota, for Taxes for the Year 1959.

Table with columns: IN WHOSE NAME ASSESSED, TO WHOM TRANSFERRED, DESCRIPTION OF PROPERTY, TRUE AND FULL VALUATIONS, ASSESSED VALUATIONS, VALUATIONS BY SCHOOL DISTRICTS AS EQUALIZED BY DEPARTMENT OF TAXATION, SOLD FOR TAXES, SPECIAL TAXES, TOTAL TAXES, PAID, WHEN PAID, Number of Receipt, March Settlement 1960, June Settlement 1960, November Settlement 1960, Penalty, Collections to First Monday in January 1961, Delinquent on First Monday in January 1961, Total Delinquent Tax and Penalty, REMARKS.

Assessment Roll and Tax List of Real Property in the Town of Sylvan

Indicate Type of Property: R-Residential, C-Commercial, I-Industrial, U-Utility, F-Farm, L-Lakeshore, T-Timber, M-Mineral

Cass County, Minnesota, for Taxes for the Year 1959.

Table with columns: IN WHOSE NAME ASSESSED, TO WHOM TRANSFERRED, DESCRIPTION OF PROPERTY, TRUE AND FULL VALUATIONS, ASSESSED VALUATIONS, VALUATIONS BY SCHOOL DISTRICTS AS EQUALIZED BY DEPARTMENT OF TAXATION, SOLD FOR TAXES, PAID, WHEN PAID, Number of Receipt, March Settlement 1960, June Settlement 1960, Penalty, November Settlement 1960, Penalty, Collections to First Monday in January 1961, Delinquent on First Monday in January 1961, Total Delinquent Tax and Penalty, REMARKS.

132-29, 133-30

Land of Sylvan Beach, 1st, 2nd, 3rd, 4th, 5th, 6th, 7th, 8th, 9th, 10th, 11th, 12th, 13th, 14th, 15th, 16th, 17th, 18th, 19th, 20th

Assessment Roll and Tax List of Real Property in the Town of Sylvia, Cass County, Minnesota, for Taxes for the Year 1959.

Form SCD-HILLER-DAVIS CO., MINNEAPOLIS

Indicate Type of Property: R-Residential, C-Commercial, I-Industrial, U-Utility, F-Farm, L-Lakeshore, T-Timber, M-Mineral

Cass County, Minnesota, for Taxes for the Year 1959.

133-29  
133-30

IN WHOSE NAME ASSESSED	TO WHOM TRANSFERRED	DESCRIPTION OF PROPERTY					No. School District	Indicate Homestead Yes or No	Indicate Agricultural Tax No	Indicate Type of Property	TRUE AND FULL VALUATIONS					ASSESSED VALUATIONS					FINAL EQUALIZED VALUE	VALUATIONS BY SCHOOL DISTRICTS AS EQUALIZED BY DEPARTMENT OF TAXATION				PAID	WHEN PAID	Number of Receipt	March Settlement 1960	June Settlement 1960	Penalty	November Settlement 1960	Penalty	Collections to First Monday in January 1961	Penalty	Delinquent on First Monday in January 1961	Total Delinquent Tax and Penalty	REMARKS																											
		SUBDIVISION	Sec. or Lot	Town or Block	Rng.	Number of Acres of Land Acres 100ths					LAND Exclusive of Structures and Improvements Dollars	BUILDINGS and Other Structures Dollars	MACHINERY Permanently Attached to Real Estate Dollars	TOTAL True and Full Value Dollars	RURAL			ALL OTHER		MACHINERY Permanently Attached to Real Estate Dollars		TOTAL ASSESSED VALUE Dollars	Total Assessed Value as Equalized by the Board of Review Dollars	District No.	District No.														District No.	District No.	District No.	Tax including State Homestead Mills	State Tax on Non-Homestead Mills	SPECIAL TAXES \$ cts.	TOTAL TAXES \$ cts.	Month	Day	Year	\$	cts.	\$	cts.	\$	cts.	\$	cts.	\$	cts.	\$	cts.					
															Homestead Up to \$4,000 20%	Over \$4,000 and Non-Homestead 33 1/3%	Timber Land Class 3e 20%	Homestead Up to \$4,000 25%	Over \$4,000 and Non-Homestead 40%																																										Mills	Mills	Mills	Mills	Mills
		NEW of NEW	20	133	30																																																												
		NEW of NEW																																																															
		SW of NEW																																																															
		SE of NEW																																																															
		NEW of NW less 1 ac.			39																																																												
		NW of NW			40																																																												
		SW of NW			40																																																												
		SE 1/4 of NW less 1 ac. to Hauseman & less 1 ac. to Albrecht, less E. 60' & less Starting 60' W. of S.E. Cor. of SE Cor. of SE 1/4 of NW, thence N. to a point 30 rds. S. of Hy, thence SW parallel with Hy. 16 rds. S. to S. line of SE 1/4 of NW thence to Beg.																																																															
Wesley E. Peterson		NW of NW																																																															
Lena Cole		SW of NW																																																															
		NW of SW			182																																																												
Minnesota Power & Light Co.		E. 60' of SE 1/4 of NW 1/4			1																																																												
Geo. A. Albrecht, Melvyn D. Hayes & Emma J. Hayes State of Minnesota		1 ac. of SE 1/4 of NW 1/4 "River side address to Pillager"			2																																																												
		Starting 60' W. of SE Cor. of SE 1/4 of NW thence to a point 30 rds. S. of Hy thence S.W. parallel with Hy. 16 rds. S. to S. line of SE 1/4 of NW thence E. to beg.			320																																																												
Leon W. & Margart Terwilliger																																																																	

Continued on next page

12502

Land... Sylvia Beach... Village of Sylvia north Sylvia... 16317... 9228... 9918... 9908... 20508 2256... 7154... 5224

Assessment Roll and Tax List of Real Property in the Town of Sylvania

Form 5 CD MILLER-DAVIS CO., MINNEAPOLIS

Indicate Type of Property: R-Residential, C-Commercial, I-Industrial, U-Utility, F-Farm, L-Lakeshore, T-Timber, M-Mineral

Cass County, Minnesota, for Taxes for the Year 1959.

Table with multiple columns: IN WHOSE NAME ASSESSED, TO WHOM TRANSFERRED, DESCRIPTION OF PROPERTY, TRUE AND FULL VALUATIONS, ASSESSED VALUATIONS, VALUATIONS BY SCHOOL DISTRICTS AS EQUALIZED BY DEPARTMENT OF TAXATION, SOLD FOR TAXES, PAID, WHEN PAID, and REMARKS. Includes handwritten entries for Minnesota Power and Light Co. and Wesley E. Peterson.

133-29

133-29

133-30

Land & Add'l

1st

1st

1st

1st

1st

1st

1st

1st

1st











Assessment Roll and Tax List of Real Property in the Town of Sylvan, Cass County, Minnesota, for Taxes for the Year 1959.

Form 30 MILLER-DAVIS CO., MINNEAPOLIS

Indicate Type of Property: R-Residential, C-Commercial, I-Industrial, U-Utility, F-Farm, L-Lakeshore, T-Timber, M-Mineral

Cass County, Minnesota, for Taxes for the Year 1959.

Table with columns: IN WHOSE NAME ASSESSED, TO WHOM TRANSFERRED, DESCRIPTION OF PROPERTY, TRUE AND FULL VALUATIONS, ASSESSED VALUATIONS, and FINAL EQUALIZED VALUE.

Table with columns: SOLD FOR TAXES, VALUATIONS BY SCHOOL DISTRICTS AS EQUALIZED BY DEPARTMENT OF TAXATION, Tax including State Homestead, State Tax on Non-Homestead, SPECIAL TAXES, TOTAL TAXES, PAID, WHEN PAID, Number of Receipt, March Settlement 1960, June Settlement 1960, November Settlement 1960, Penalty, Collections to First Monday in January 1961, Delinquent on First Monday in January 1961, Total Delinquent Tax and Penalty, REMARKS.

Village of Sylvan

Martin + Lena Loftis

State of Minnesota

State of Minnesota

Jessie Britton State of Minnesota

State of Minnesota

Charles Della D. Luttrell

Vertical text on the right edge: Sylvan Beach, Sylvan, Shady Shore, Allen's 2nd, North Sylvan, Sylvan Beach, Sylvan Beach.

Assessment Roll and Tax List of Real Property in the Town of Sylvan, Cass County, Minnesota, for Taxes for the Year 1959.

Form 50 - MILLER-DAVIS CO., MINNEAPOLIS

\* Indicate Type of Property: R-Residential, C-Commercial, I-Industrial, U-Utility, F-Farm, L-Lakeshore, T-Timber, M-Mineral

Table with columns: IN WHOSE NAME ASSESSED, TO WHOM TRANSFERRED, DESCRIPTION OF PROPERTY, TRUE AND FULL VALUATIONS, ASSESSED VALUATIONS, FINAL EQUALIZED VALUE.

Cass County, Minnesota, for Taxes for the Year 1959.

Table with columns: VALUATIONS BY SCHOOL DISTRICTS AS EQUALIZED BY DEPARTMENT OF TAXATION, PAID, WHEN PAID, Number of Receipt, March Settlement 1960, June Settlement 1960, November Settlement 1960, Collections to First Monday in January 1961, Delinquent on First Monday in January 1961, Total Delinquent Tax and Penalty.

Village of Sylvan

Handwritten notes and vertical text on the right edge of the page, including 'Sylvan Beach' and 'Shady Shore'.







Assessment Roll and Tax List of Real Property in the Town of Sylvan

\* Indicate Type of Property: R-Residential, C-Commercial, I-Industrial, U-Utility, F-Farm, L-Lakeshore, T-Timber, M-Mineral

Cass County, Minnesota, for Taxes for the Year 1959.

Form 50 MILLER-DAVIS CO., MINNEAPOLIS

IN WHOSE NAME ASSESSED	TO WHOM TRANSFERRED	DESCRIPTION OF PROPERTY				TRUE AND FULL VALUATIONS											SOLD FOR TAXES	VALUATIONS BY SCHOOL DISTRICTS AS EQUALIZED BY DEPARTMENT OF TAXATION												PAID	WHEN PAID	Number of Receipt	March Settlement 1960	June Settlement 1960	Penalty Settlement 1960	Collections to First Monday in January 1961	Penalty	Delinquent on First Monday in January 1961	Total Delinquent Tax and Penalty	REMARKS																													
		Subdivision	Sec. or Lot	Town or Block	Rng.	Number of Acres of Land	TOTAL True and Full Value	RURAL		ALL OTHER			MACHINERY Permanently Attached to Real Estate	TOTAL ASSESSED VALUE	Total Assessed Value as Equalized by the Board of Review	District No.		District No.	District No.	District No.	District No.	District No.	Tax including State Homestead	State Tax on Non-Homestead	SPECIAL TAXES	TOTAL TAXES	Month	Day	Year												\$	cts.	\$	cts.	\$	cts.	\$	cts.	\$	cts.	\$	cts.	\$	cts.	\$	cts.													
								Acres	100ths	Homestead Up to \$4,000 20%	Over \$4,000 and Non-Homestead 33 1/3%	Timber Land Class Bc 20%																																													Homestead Up to \$4,000 25%	Over \$4,000 and Non-Homestead 40%	Dollars	Dollars	Dollars	Dollars	Dollars	Dollars	Dollars	Dollars	Dollars	Dollars	Dollars
		No. School District	Indicate Homestead Tax or No	Indicate Agricultural Tax or No	Indicate Type of Property	LAND Exclusive of Structures and Improvements	BUILDINGS and Other Structures	MACHINERY Permanently Attached to Real Estate																																																													
State of Minnesota				North Sylvan Lake																																																																	
				Part of S 1/2 of NW 1/4 Sec. 13-133-30																																																																	
State of Minnesota			11 1																																																																		
State of Minnesota			12																																																																		

NORTH SYLVAN Village of Sylvan

Land ... Sylvan Beach ... Shady Shores ... d & Allen's 2nd ... Sylvan Beach ...

Assessment Roll and Tax List of Real Property in the Town of Sylvan

Indicate Type of Property: R-Residential, C-Commercial, I-Industrial, U-Utility, F-Farm, L-Lakeshore, T-Timber, M-Mineral

Cass County, Minnesota, for Taxes for the Year 1959.

Table with columns: IN WHOSE NAME ASSESSED, TO WHOM TRANSFERRED, DESCRIPTION OF PROPERTY, TRUE AND FULL VALUATIONS, ASSESSED VALUATIONS, VALUATIONS BY SCHOOL DISTRICTS AS EQUALIZED BY DEPARTMENT OF TAXATION, SOLD FOR TAXES, SPECIAL TAXES, TOTAL TAXES, PAID, WHEN PAID, Number of Receipt, March Settlement 1960, June Settlement 1960, Penalty, November Settlement 1960, Penalty, Collections to First Monday in January 1961, Penalty, Delinquent on First Monday in January 1961, Total Delinquent Tax and Penalty, REMARKS.

Carlton's Sylvan Park, SILVAN Village of Sylvan

Hand Add'l Sylvan Beach, Sylvan's 1st Sylvan Beach, Sylvan's Shady Shores In to Sylvan Beach, Sylvan's 2nd Sylvan Beach, Hand Add'l Sylvan Beach, Sylvan's 3rd Sylvan Beach

Assessment Roll and Tax List of Real Property in the Town of Sylvan, Cass County, Minnesota, for Taxes for the Year 1959.

Cass County, Minnesota, for Taxes for the Year 1959.

Table with columns: IN WHOSE NAME ASSESSED, TO WHOM TRANSFERRED, DESCRIPTION OF PROPERTY, TRUE AND FULL VALUATIONS, ASSESSED VALUATIONS, VALUATIONS BY SCHOOL DISTRICTS AS EQUALIZED BY DEPARTMENT OF TAXATION, TAXES, PAID, WHEN PAID, etc.

133-29 133-30 Carlyon's Sylvan Park H. SILVAN Village of Sylvan

Land Add'l Sylvan Beach Sylvan's 1st Sylvan's 2nd Shady Shores In to Sylvan Beach & Allen's 2nd Add'l Sylvan Beach ch





Assessment Roll and Tax List of Real Property in the Town of Sylvan,  
\* Indicate Type of Property: R-Residential, C-Commercial, I-Industrial, U-Utility, F-Farm, L-Lakeshore, T-Timber, M-Mineral

Form 50 - MILLER-DAVIS CO., MINNEAPOLIS

133-29  
133-30  
Carlyon's Sylvan Park  
Sylvan Village of Sylvan

Table with columns: IN WHOSE NAME ASSESSED, TO WHOM TRANSFERRED, DESCRIPTION OF PROPERTY, TRUE AND FULL VALUATIONS, ASSESSED VALUATIONS (RURAL, ALL OTHER), TOTAL ASSESSED VALUE, and FINAL EQUALIZED VALUE. Includes handwritten entries for Roy Bertuleit and Ruth Bremnes.

Cass County, Minnesota, for Taxes for the Year 1959.

133-29  
133-30  
Land & Sylvan Beach  
Sylvan's 1st  
Shady Shores In to Sylvan Beach  
& Allen's 2nd  
Sylvan Beach  
Hand  
Add  
Sylvan Beach

Table with columns: SOLD FOR TAXES, VALUATIONS BY SCHOOL DISTRICTS AS EQUALIZED BY DEPARTMENT OF TAXATION, SPECIAL TAXES, TOTAL TAXES, PAID, WHEN PAID, Number of Receipt, March Settlement 1960, June Settlement 1960, Penalty Settlement 1960, Collections to First Monday in January 1961, Delinquent on First Monday in January 1961, Total Delinquent Tax and Penalty, REMARKS. Includes handwritten notes about tax payments.

Assessment Roll and Tax List of Real Property in the Town of Sylvan

Form 50 MILLER-DAVIS CO., MINNEAPOLIS

Indicate Type of Property: R-Residential, C-Commercial, I-Industrial, U-Utility, F-Farm, L-Lakeshore, T-Timber, M-Mineral

Cass County, Minnesota, for Taxes for the Year 1959.

133-29 133-30 Carlyon's Sylvan Park Sylvan Village of Sylvan Sylvan Beach

Table with columns for IN WHOSE NAME ASSESSED, TO WHOM TRANSFERRED, SUBDIVISION, DESCRIPTION OF PROPERTY, TRUE AND FULL VALUATIONS, ASSESSED VALUATIONS, VALUATIONS BY SCHOOL DISTRICTS AS EQUALIZED BY DEPARTMENT OF TAXATION, and PAID/WHEN PAID. Includes handwritten entries for names like Geo. M. + Bernice Wilder and Carl L. + Hazel Bondeson.

Land & Add'n Sylvan Beach Sylvan's Shady Shores in to Sylvan Beach d & Allen's 2nd Add'n to Sylvan Beach Land & Allen's 3rd Add'n to Sylvan Beach







Assessment Roll and Tax List of Real Property in the Town of Sylvan, Cass County, Minnesota, for Taxes for the Year 1959.

Cass County, Minnesota, for Taxes for the Year 1959.

Form 30 - MILLER-DAVIS CO., MINNEAPOLIS

\* Indicate Type of Property: R-Residential, C-Commercial, I-Industrial, U-Utility, F-Farm, L-Lakeshore, T-Timber, M-Mineral

Main table with columns: IN WHOSE NAME ASSESSED, TO WHOM TRANSFERRED, SUBDIVISION, DESCRIPTION OF PROPERTY, TRUE AND FULL VALUATIONS, ASSESSED VALUATIONS, VALUATIONS BY SCHOOL DISTRICTS AS EQUALIZED BY DEPARTMENT OF TAXATION, TAXES, PAID, WHEN PAID, Number of Receipt, March Settlement 1960, June Settlement 1960, Penalty, November Settlement 1960, Penalty, Collections to First Monday in January 1961, Delinquent on First Monday in January 1961, Total Delinquent Tax and Penalty, REMARKS.

133-29 133-30 Head & Allen's 1st Addn to Sylvan Beach Sylvan Village of Sylvan Carlyon' Sylvan Park Sylvan Beach

Sylvan's Shady Shore In to Sylvan Beach Head & Allen's 2nd Addn to Sylvan Beach Head & Allen's 3rd Addn to Sylvan Beach

Assessment Roll and Tax List of Real Property in the Town of Sylvan, Cass County, Minnesota, for Taxes for the Year 1959.

Cass County, Minnesota, for Taxes for the Year 1959.

Form 50 - MILLER-DAVIS CO., MINNEAPOLIS

\* Indicate Type of Property: R-Residential, C-Commercial, I-Industrial, U-Utility, F-Farm, L-Lakeshore, T-Timber, M-Mineral

Table with columns: IN WHOSE NAME ASSESSED, TO WHOM TRANSFERRED, DESCRIPTION OF PROPERTY, TRUE AND FULL VALUATIONS, ASSESSED VALUATIONS, VALUATIONS BY SCHOOL DISTRICTS AS EQUALIZED BY DEPARTMENT OF TAXATION, SOLD FOR TAXES, PAID, WHEN PAID, Number of Receipt, March Settlement 1960, June Settlement 1960, Penalty, November Settlement 1960, Penalty, Collections to First Monday in January 1961, Delinquent on First Monday in January 1961, Total Delinquent Tax and Penalty, REMARKS.

133-29, 133-30, Land & Allen's 1st Add'n to Sylvan Beach, Sylvan Shady Shores, Sylvan Park, Sylvan Beach, Land & Allen's 2nd Add'n to Sylvan Beach, Land & Allen's 3rd Add'n to Sylvan Beach

Land & Allen's 2nd Add'n to Sylvan Beach, Land & Allen's 3rd Add'n to Sylvan Beach

Assessment Roll and Tax List of Real Property in the Town of Sylvan

Cass County, Minnesota, for Taxes for the Year 1959.

Form 50 - MILLER-DAVIS CO., MINNEAPOLIS

Indicate Type of Property: R-Residential, C-Commercial, I-Industrial, U-Utility, F-Farm, L-Lakeshore, T-Timber, M-Mineral

133-29 133-30 Land & Allen's 1st Add'n to Sylvan Beach Sylvan Shady Shores Sylvan Shady Shores Sylvan Shady Shores Sylvan Beach

Table with columns: IN WHOSE NAME ASSESSED, TO WHOM TRANSFERRED, SUBDIVISION, Sec. or Lot, Town or Block, Reg., Number of Acres of Land, No. School District, Indicate Homestead, Indicate Agricultural Tax, Indicate Type of Property, TRUE AND FULL VALUATIONS (LAND, BUILDINGS, MACHINERY, TOTAL), ASSESSED VALUATIONS (RURAL, ALL OTHER, MACHINERY, TOTAL ASSESSED VALUE), and FINAL EQUALIZED VALUE.

Table with columns: SOLD FOR TAXES, VALUATIONS BY SCHOOL DISTRICTS AS EQUALIZED BY DEPARTMENT OF TAXATION (District No., Rate, etc.), Tax including State Homestead, State Tax on Non-Homestead, SPECIAL TAXES, TOTAL TAXES, PAID, WHEN PAID, Number of Receipt, March Settlement, June Settlement, Penalty, November Settlement, Collections to First Monday in January 1961, Delinquent on First Monday in January 1961, Total Delinquent Tax and Penalty, and REMARKS.

Land & Allen's 2nd Add'n to Sylvan Beach Land & Allen's 3rd Add'n to Sylvan Beach



Assessment Roll and Tax List of Real Property in the Town of Sylvan, Cass County, Minnesota, for Taxes for the Year 1959.

Form 50 MILLER-DAVIS CO., MINNEAPOLIS

Indicate Type of Property: R-Residential, C-Commercial, I-Industrial, U-Utility, F-Farm, L-Lakeshore, T-Timber, M-Mineral

Table with columns: IN WHOSE NAME ASSESSED, TO WHOM TRANSFERRED, SUBDIVISION, DESCRIPTION OF PROPERTY, TRUE AND FULL VALUATIONS, ASSESSED VALUATIONS, FINAL EQUALIZED VALUE.

Handwritten entries: + Esther J. John D. McWhorter, F.D. + Florence Schmidt, Elmer E. Erickson

Cass County, Minnesota, for Taxes for the Year 1959.

Table with columns: SOLD FOR TAXES, VALUATIONS BY SCHOOL DISTRICTS AS EQUALIZED BY DEPARTMENT OF TAXATION, TAXES, PAID, WHEN PAID, Number of Receipt, March Settlement 1960, June Settlement 1960, November Settlement 1960, Collections to First Monday in January 1961, Delinquent on First Monday in January 1961, Total Delinquent Tax and Penalty, REMARKS.

21 658 14 672

346 326

Vertical text on the left margin: 133-29, 133-30, Sylvan Shady Shores, Sylvan Park, Sylvan Beach, Land & Allen's 1st Add'n to Sylvan Beach.

Vertical text on the right margin: Land & Allen's 2nd Add'n to Sylvan Beach, Land & Allen's 3rd Add'n to Sylvan Beach.

Assessment Roll and Tax List of Real Property in the Town of Sylvan, Minnesota

Form 50 - MILLER-DAVIS CO., MINNEAPOLIS

\* Indicate Type of Property: R-Residential, C-Commercial, I-Industrial, U-Utility, F-Farm, L-Lakeshore, T-Timber, M-Mineral

Cass County, Minnesota, for Taxes for the Year 1959.

IN WHOSE NAME ASSESSED	TO WHOM TRANSFERRED	SUBDIVISION	Sec. or Lot	Town or Block	Rtg.	Number of Acres of Land Acres 100ths	No. School District	Indi- cate Homestead Tax or No	Indi- cate Agri- cultural Tax or No	Indi- cate Type of Property	TRUE AND FULL VALUATIONS					ASSESSED VALUATIONS					TOTAL ASSESSED VALUE Dollars	Total Assessed Value as Equalized by the Board of Review Dollars	FINAL EQUALIZED VALUE Dollars		
											LAND Exclusive of Structures and Improvements Dollars	BUILDINGS and Other Structures Dollars	MACHINERY Permanently Attached to Real Estate Dollars	TOTAL True and Full Value Dollars	RURAL		ALL OTHER			MACHINERY Permanently Attached to Real Estate Dollars				TOTAL ASSESSED VALUE Dollars	Total Assessed Value as Equalized by the Board of Review Dollars
															Homestead Up to \$4,000 20%	Over \$4,000 and Non- Homestead 33 1/3%	Timber Land Class A 20%	Homestead Up to \$4,000 25%	Over \$4,000 and Non- Homestead 40%						
															Sylvan Shady Shores										
Dollars	Dollars	Dollars	Dollars	Dollars	Dollars	Dollars	Dollars	Dollars	Dollars	Dollars	Dollars	Dollars	Dollars	Dollars	Dollars	Dollars	Dollars	Dollars							

SOLD FOR TAXES	VALUATIONS BY SCHOOL DISTRICTS AS EQUALIZED BY DEPARTMENT OF TAXATION						Tax including State Homestead	State Tax on Non-Homestead	SPECIAL TAXES	TOTAL TAXES	PAID	WHEN PAID	Number of Receipt	March Settlement 1960	June Settlement 1960	Penalty	November Settlement 1960	Penalty	Collections to First Monday in January 1961	Penalty	Delinquent on First Monday in January 1961	Total Delinquent Tax and Penalty	REMARKS	
	District No.	District No.	District No.	District No.	District No.	District No.																		
	Rate	Rate	Rate	Rate	Rate	Rate																		
	Mills	Mills	Mills	Mills	Mills	Mills																		
	3					94	02		96	1	PAID IN FULL MAY 24 1960													
	100					31 54	62		32 16	2	PAID IN FULL MAY 24 1960	8924										9814		
	17					536	10		546	3												546		
	108					3416	68		3474	4	PAID IN FULL MAY 31 1960	12 833											9815	
	100					31 54			31 54	5	PAID IN FULL MAY 31 1960	12 840											9815	
	100					31 54	62		32 16	6	PAID IN FULL MAY 31 1960	12 854											9816	
	83					2618	52		2670	7	PAID IN FULL MAY 31 1960 2nd HALF PAID OCT 1 0 1960	10 464											9817	
	133					41 96	82		4278	8	1st Half Paid MAY 1 3 1960	14866												9818
	83					2618	52		2670	9	PAID IN FULL MAY 31 1960	12 874												9819
	75					23 66	46		2412	10	PAID IN FULL FEB 3 1960	472	24 12											9822
	75					23 66	46		2412	11														9824
	83					2618	52		2670	12	PAID IN FULL FEB 29 1960	2298	2670											9821
	83					2618	52		2670	13	PAID IN FULL MAY 31 1960 2nd Half Paid OCT 31 1960	13700												9819
	83					2618	52		2670	14	1st HALF PAID MAY 3 1 1960	12410												9819

133-29 133-30

Sylvan Shady Shores

Carlyon Sylvan Park

Sylvan Beach

Land & Allen's 2nd Add'n to Sylvan Beach

Land & Allen's 3rd Add'n to Sylvan Beach

4 100  
1026  
1126  
355.16 638  
361.54

24 12 Tax Bought -> Sold \$2945

2958

Assessment Roll and Tax List of Real Property in the Town of Sylvan, Cass County, Minnesota, for Taxes for the Year 1959.

Form 50 - MILLER-DAVIS CO., MINNEAPOLIS

\* Indicate Type of Property: R-Residential, C-Commercial, I-Industrial, U-Utility, F-Farm, L-Lakeshore, T-Timber, M-Mineral

Table with columns: IN WHOSE NAME ASSESSED, TO WHOM TRANSFERRED, DESCRIPTION OF PROPERTY, TRUE AND FULL VALUATIONS, ASSESSED VALUATIONS, and FINAL EQUALIZED VALUE.

Vertical text on the left margin: 132-29, 133-30, Sylvan Shady Shores, Sylvan Park, Sylvan Beach, Lead & Allen's 1st Addn to Sylvan Beach, Sylvan Shady Shores, Sylvan Park, Sylvan Beach, Lead & Allen's 2nd Addn to Sylvan Beach, Sylvan Park, Sylvan Beach, Lead & Allen's 3rd Addn to Sylvan Beach.

Cass County, Minnesota, for Taxes for the Year 1959.

Table with columns: SOLD FOR TAXES, VALUATIONS BY SCHOOL DISTRICTS AS EQUALIZED BY DEPARTMENT OF TAXATION, Tax including State Homestead, State Tax on Non-Homestead, SPECIAL TAXES, TOTAL TAXES, PAID, WHEN PAID, Number of Receipt, March Settlement 1960, June Settlement 1960, Penalty, November Settlement 1960, Penalty, Collections to First Monday in January 1961, Penalty, Delinquent on First Monday in January 1961, Total Delinquent Tax and Penalty, REMARKS.

Vertical text on the right margin: Lead & Allen's 2nd Addn to Sylvan Beach, Sylvan Park, Sylvan Beach, Lead & Allen's 3rd Addn to Sylvan Beach.



Assessment Roll and Tax List of Real Property in the Town of Sylvan

\* Indicate Type of Property: R-Residential, C-Commercial, I-Industrial, U-Utility, F-Farm, L-Lakeshore, T-Timber, M-Mineral

Form 3C MILLER-DAVIS CO., MINNEAPOLIS

Table with columns: IN WHOSE NAME ASSESSED, TO WHOM TRANSFERRED, DESCRIPTION OF PROPERTY, TRUE AND FULL VALUATIONS (LAND, BUILDINGS, MACHINERY, TOTAL True and Full Value), ASSESSED VALUATIONS (RURAL, ALL OTHER, MACHINERY, TOTAL ASSESSED VALUE), FINAL EQUALIZED VALUE.

Cass County, Minnesota, for Taxes for the Year 1959.

Table with columns: VALUATIONS BY SCHOOL DISTRICTS AS EQUALIZED BY DEPARTMENT OF TAXATION (District No., No., No., No., No., No.), Tax including State Homestead, State Tax on Non-Homestead, SPECIAL TAXES, TOTAL TAXES, PAID, WHEN PAID (Month, Day, Year), Number of Receipt, March, June, November Settlement, Penalty, Collections to First Monday in January 1961, Delinquent on First Monday in January 1961, Total Delinquent Tax and Penalty, REMARKS.

Vertical text on the left margin: 133-29, 133-30, Carllyon' Sylvan Park, Land & Allen's 1st Add'n to Sylvan Beach, Sylvan Shady Shores, Sylvan Beach, Sylvan Beach, Sylvan Beach, Land & Allen's 3rd Add'n to Sylvan Beach.

Vertical text on the right margin: Land & Allen's 3rd Add'n to Sylvan Beach.



Assessment Roll and Tax List of Real Property in the Town of Sylvan, Cass County, Minnesota, for Taxes for the Year 1959.

Cass County, Minnesota, for Taxes for the Year 1959.

Form 50 MILLER-DAVIS CO., MINNEAPOLIS

Indicate Type of Property: R-Residential, C-Commercial, I-Industrial, U-Utility, F-Farm, L-Lakeshore, T-Timber, M-Mineral

Table with columns: IN WHOSE NAME ASSESSED, TO WHOM TRANSFERRED, DESCRIPTION OF PROPERTY, TRUE AND FULL VALUATIONS, ASSESSED VALUATIONS, VALUATIONS BY SCHOOL DISTRICTS AS EQUALIZED BY DEPARTMENT OF TAXATION, SOLD FOR TAXES, SPECIAL TAXES, TOTAL TAXES, PAID, WHEN PAID, Number of Receipt, March Settlement 1960, June Settlement 1960, Penalty, November Settlement 1960, Penalty, Collections to First Monday in January 1961, Penalty, Delinquent on First Monday in January 1961, Total Delinquent Tax and Penalty, REMARKS.

133-29 133-30 Carl Lyon's Sylvan Park in Sylvan Land & Allen's 1st Add'n to Sylvan Beach Land & Allen's 2nd Add'n to Sylvan Beach Land & Allen's 3rd Add'n to Sylvan Beach

Personal

