

ASSESSMENT & TAX LIST - 1956

Sylvan

Assessor's Return of Exempt Real Property in the _____ of _____ County of _____, Minnesota, for the Year 1956

NAMES OF OWNERS	DESCRIPTION				No. of Acres		FOR WHAT PURPOSE USED	TRUE AND FULL VALUATIONS				ASSESSED VALUATIONS		REMARKS
	SUBDIVISION	Sec. or Lot	Town or Block	Range	Acres	100ths		LAND Exclusive of Structures and Improvements Dollars	BUILDINGS and Other Structures Dollars	MACHINERY Permanently Attached to Real Estate Dollars	TOTAL True and Full Value Dollars	Rural Including Machinery	All Other	
												33 1/3%	40%	
Gull River Cemetery Assoc.	202' X 226' of SW 1/4 of NW 1/4	17	133	29			15			15	5		8	
Hardy Lake Camp Ass'n Inc.	Sites 278' X 388' X 266.7' X 466.7' & 274	33	123	29			486	1725		2211	727		7	
Twp. of Sylvan, May, Fairview & Village of Pillsbury	Part of Lot 2	5	133	30			60			60	20		4	
Town of Sylvan	Village of Sylvan - Sites 6 to 14 Inc. Bldg. 2						40	50		90	30		✓	
Town of Sylvan	Carlson's Sylvan Park Sites 35 to 44 Inc.						270			270	90		4	
											2646	882		

133-29
 133-29
 133-30
 NORTH SYLVAN CARLYON'S SYLVAN

Assessor's Return

COLLECTIONS OF TAXES OF 1956 *June* OF *Sylvan* CASS COUNTY, MINNESOTA

FORM 2 WELLS-GARDNER COMPANY, MINNEAPOLIS

NAMES OF OWNERS

FUNDS	MARCH SETTLEMENT 1956	JUNE SETTLEMENT 1956	NOV. SETTLEMENT 1956	Amount Collected from Nov. 1955 to First Monday in Jan. 1956	REDUCTIONS	Total Reductions and Collected	BALANCE UNCOLLECTED	ADDITIONS	Total Uncollected to First Monday in January, 1956
State—Non-Homestead, State—Homestead,	4336 3312	34204 28818	16505 21505	138 190					
County Revenue, County Road and Bridge, County Welfare, County Bond and Interest, <i>A. & B. Bldg. Well. P. Co. Cass Co. Bldg.</i>	23550 12331 41482 6731 1739 6274 434	204829 101205 360795 58544 15127 54612 3782	152851 80038 269239 43688 11288 40752 2823	1348 706 2375 316 160 359 25					
Town Revenue, Town Road and Bridge, Town Drag, Town State Loan,	1190 11885 869	10362 103021 7563	7132 76877 5645	68 678 50					
School Local 1 Mill, School Special, School State Loan, Deficiency Tuition Transportation C.O. #1 Debt	869 29439 44192 634 5313 394	7565 332104 384393 5522 46214 10180	5643 259220 286750 4122 34489 6369	49 1981 2530 36 304 61					
	194928	1774892	1325636	11384					

	LOCAL 1 MILL	SPECIAL	Deficiency Transp. C.O.	#1 Debt	TOTALS		
MARCH SETTLEMENT	73 112 195	1826 5656 13213 9744	3713 5749 24826 9904	63 82 357 142	446 682 2987 1191	150 234 —	6261 10520 48967 51176
JUNE SETTLEMENT	1632 3285 212 2436	40816 164234 5270 121786	82970 166727 10714 123782	1192 2328 153 1779	9974 20069 1288 14883	3391 6799 —	98931 139905 360712 264666
NOVEMBER SETTLEMENT	635 2442 284 2282	15878 122098 7122 114122	32276 124107 14478 115994	464 1784 208 1666	3881 14920 1742 13946	1315 5054	785980 54449 270400 23834 248010
NOVEMBER to JANUARY	20 29	511 1470	1036 1494	15 21	124 186	61	1706 3255
ADDITIONS	49	1981	2530	36	304	61	596693
REDUCTIONS							

132-29 133-29
133-30
VILLAGE OF SYLVAN
NORTH SYLVAN
CARTON'S ST

Assessment Roll and Tax List of Real Property in the Town of Sylvan, Cass County, Minnesota, for Taxes for the Year 1956.

Cass County, Minnesota, for Taxes for the Year 1956.

Form 5C (56) - MILLER-SAYRE COMPANY, MINNEAPOLIS

* Indicate Type of Property: R-Residential, C-Commercial, I-Industrial, U-Utility, F-Farm, L-Lakeshore, T-Timber, M-Mineral

Table with columns: IN WHOSE NAME ASSESSED, TO WHOM TRANSFERRED, DESCRIPTION OF PROPERTY, TRUE AND FULL VALUATIONS (RURAL, ALL OTHER, MACHINERY), ASSESSED VALUATIONS (TOTAL ASSESSED, FINAL EQUALIZED), VALUATIONS BY SCHOOL DISTRICTS, TAXES (SOLD FOR TAXES, District, Rate, State Tax, SPECIAL TAXES, TOTAL TAXES), PAID, WHEN PAID, Number of Receipt, March Settlement, June Settlement, November Settlement, Collections to First Monday in January, Delinquent on First Monday in January, Total Delinquent Tax and Penalty, REMARKS.

132-29
133-29
133-30

ADD'L ALIEN'S 1st
VILLAGE OF SYLVAN
NORTH SYLVAN
CARLYORN'S ST

Assessment Roll and Tax List of Real Property in the Town of Sylvan, Minnesota

Cass County, Minnesota, for Taxes for the Year 1956.

Form 501 (56) MILLER-BAYNE COMPANY, MINNEAPOLIS * Indicate Type of Property: R-Residential, C-Commercial, I-Industrial, U-Utility, F-Farm, L-Lakeshore, T-Timber, M-Mineral

Table with columns: IN WHOSE NAME ASSESSED, TO WHOM TRANSFERRED, DESCRIPTION OF PROPERTY, TRUE AND FULL VALUATIONS, ASSESSED VALUATIONS, and FINAL EQUALIZED VALUE. Includes handwritten entries for John A. Miller, Minnesota Power & Light Co., and others.

Table with columns: VALUATIONS BY SCHOOL DISTRICTS AS EQUALIZED BY DEPARTMENT OF TAXATION, TAX INCLUDING STATE HOMESTEAD, SPECIAL TAXES, TOTAL TAXES, PAID, WHEN PAID, Number of Receipt, March Settlement 1957, June Settlement 1957, November Settlement 1957, Collections to First Monday in January 1958, Delinquent on First Monday in January 1958, Total Delinquent Tax and Penalty, REMARKS.

133-29 132-29 133-30 NORTH SYLVAN CARLYON'S SUBDIVISION

Assessment Roll and Tax List of Real Property in the Town of Sylwan

Indicate Type of Property: R-Residential, C-Commercial, I-Industrial, U-Utility, F-Farm, L-Lakeshore, T-Timber, M-Mineral

Table with columns: IN WHOSE NAME ASSESSED, TO WHOM TRANSFERRED, DESCRIPTION OF PROPERTY, TRUE AND FULL VALUATIONS, ASSESSED VALUATIONS, and FINAL EQUALIZED VALUE. Includes handwritten entries for Minnesota Power & Light Co. and Gulb River Cemetery Assn.

Cass County, Minnesota, for Taxes for the Year 1956.

Table with columns: SOLD FOR TAXES, VALUATIONS BY SCHOOL DISTRICTS AS EQUALIZED BY DEPARTMENT OF TAXATION, Tax including State Homestead, SPECIAL TAXES, TOTAL TAXES, PAID, WHEN PAID, Number of Receipt, March Settlement, June Settlement, November Settlement, Collections to First Monday in January, Delinquent on First Monday in January, Total Delinquent Tax and Penalty, REMARKS. Includes handwritten payment records for 1956.

133-29

133-30

Land & Aerial's 1st SYLVAN STA VILLAGE OF SYLVAN NORTH SYLVAN CARLYON'S SYLVAN

Assessment Roll and Tax List of Real Property in the Town of Spring of Spring Minnesota

Cass County, Minnesota, for Taxes for the Year 1956.

Form 501 (56) WILLES-BATE COMPANY, MINNEAPOLIS
* Indicate Type of Property: R-Residential, C-Commercial, I-Industrial, U-Utility, F-Farm, L-Lakeshore, T-Timber, M-Mineral

IN WHOSE NAME ASSESSED	TO WHOM TRANSFERRED	DESCRIPTION OF PROPERTY				TRUE AND FULL VALUATIONS										FINAL EQUALIZED VALUE										
		SUBDIVISION	Sec. of Lot	Town of Block	Rng.	Number of Acres of Land	No. School District	Indicate Homestead or No.	Indicate Agricultural or No.	Indicate Type of Property	RURAL						ALL OTHER									
											LAND Exclusive of Structures and Improvements	BUILDINGS and Other Structures	MACHINERY Permanently Attached to Real Estate	TOTAL True and Full Value	Homestead		Timber Land Class 3e 20%	Homestead		MACHINERY Permanently Attached to Real Estate 33 1/8%	TOTAL ASSESSED VALUE	Total Assessed Value as Equalized by the Board of Review				
															Up to \$1,000 20%			Over \$1,000 and Non-Homestead 33 1/8%	Up to \$1,000 25%				Over \$1,000 and Non-Homestead 40%	Dollars	Dollars	Dollars
Clyde & Thelma Barber Loy & Mabel Smith		NE 1/4 of NE 1/4	18	133	29	36.06	115	NO	yes	F	340	935			1275		425			425						
" " " "		NW 1/4 of NE 1/4				39.78	"	"	"		246				246		82			82						
Brower & Laura Peterson		SW 1/4 of NE 1/4 less 1/2 ac.				24.02	"	"	"		279				279		93			93						
" " " "		SE 1/4 of NE 1/4 " "				31.74	"	"	"		314	100			414		138			138						
Clyde & Thelma Barber Loy & Mabel Smith		NE 1/4 of NW 1/4				40	"	"	"		255				255		85			85						
" " " "		NW 1/4 of NW 1/4 Lot 1				40.81	"	"	"		441				441		147			147						
Chas. R. & Mabel M. Woodhouse		SW 1/4 of NW 1/4 Lot 2 less 1/2 ac.				29.03	yes	"	"		195				195	39				39						
" " " "		SE 1/4 of NW 1/4				27.80	"	"	"		185				185	37				37						
C. R. Woodhouse		NE 1/4 of SW 1/4				40	"	"	"		400				400	80				80						
" " " "		NW 1/4 of SW 1/4 Lot 3				41.65	"	"	"		480				480	96				96						
" " " "		SW 1/4 of SW 1/4 Lot 4				42.07	"	"	"		375	900			1075	215				215						
" " " "		SE 1/4 of SW 1/4				40	"	"	"		315				315	63				63						
Brower & Laura Peterson		NE 1/4 of SE 1/4				40	no	"	"		417				417	139				139						
" " " "		NW 1/4 of SE 1/4				40	"	"	"		417				417	139				139						
C. R. Woodhouse		SW 1/4 of SE 1/4				40	yes	"	"		340				340	68				68						
Minnesota Power & Light Co.		SE 1/4 of SE 1/4				40	no	no	T		360				360	120				120						
						596.96							5359	1735	7094	598	1868			1966						

SOLD FOR TAXES	VALUATIONS BY SCHOOL DISTRICTS AS EQUALIZED BY DEPARTMENT OF TAXATION						Tax Including State Homestead	State Tax on Non-Homestead	SPECIAL TAXES	TOTAL TAXES	PAID	WHEN PAID	Number of Receipt	March Settlement 1957	June Settlement 1957	Penalty	November Settlement 1957	Penalty	Collections to First Monday in January 1958	Penalty	Delinquent on First Monday in January 1958	Total Delinquent Tax and Penalty	REMARKS	
	District No.	District No.	District No.	District No.	District No.	District No.																		
	Rate	Rate	Rate	Rate	Rate	Rate																		
	Mills	Mills	Mills	Mills	Mills	Mills																		
1	1	1	1	1	1	425	226		9234	1	PAID IN FULL	MAR 25 1957												
2	2	2	2	2	2	82	44		1782	2	PAID IN FULL	MAR 25 1957												
3	3	3	3	3	3	93	50		2022	3	2nd Half Paid	OCT 30 1957												
4	4	4	4	4	4	138	74		2998	4	2nd Half Paid	OCT 30 1957												
5	5	5	5	5	5					5														
6	6	6	6	6	6	85	46		1848	6	PAID IN FULL	MAR 25 1957												
7	7	7	7	7	7	147	78		3194	7	PAID IN FULL	MAR 25 1957												
8	8	8	8	8	8	39			826	8	PAID IN FULL	MAY 20 1957												
9	9	9	9	9	9	37			784	9	PAID IN FULL	MAY 20 1957												
10	10	10	10	10	10					10														
11	11	11	11	11	11	80			1696	11	PAID IN FULL	MAY 20 1957												
12	12	12	12	12	12	96			2034	12	PAID IN FULL	MAY 20 1957												
13	13	13	13	13	13	215			4556	13	PAID IN FULL	MAY 20 1957												
14	14	14	14	14	14	63			1336	14	PAID IN FULL	MAY 20 1957												
15	15	15	15	15	15					15														
16	16	16	16	16	16	139			2946	16	2nd Half Paid	OCT 30 1957												
17	17	17	17	17	17	139			2946	17	1st Half Paid	MAY 31 1957												
18	18	18	18	18	18	68			1442	18	PAID IN FULL	MAY 20 1957												
19	19	19	19	19	19	120			2844	19	2nd Half Paid	OCT 31 1957												
20	20	20	20	20	20					20	1st Half Paid	MAY 31 1957												
						H 598			39126															
						1248			2844															
						1846			41970															
						120			730															
						35716			42700															
						6984																		

133-29
133-30
133-30
NORTH SYLVAN CARLSON'S SYLVAN VILLAGE OF SYLVAN
1st SYLVAN SHAW
Add'n to SYLVAN P.O.

Assessment Roll and Tax List of Real Property in the Town of Lyman, Cass County, Minnesota, for Taxes for the Year 1956.

Cass County, Minnesota, for Taxes for the Year 1956.

Table with columns: IN WHOSE NAME ASSESSED, TO WHOM TRANSFERRED, DESCRIPTION OF PROPERTY, TRUE AND FULL VALUATIONS, ASSESSED VALUATIONS, VALUATIONS BY SCHOOL DISTRICTS AS EQUALIZED BY DEPARTMENT OF TAXATION, TAX INCLUDING STATE HOMESTEAD, STATE TAX ON NON-HOMESTEAD, SPECIAL TAXES, TOTAL TAXES, PAID, WHEN PAID, Number of Receipt, March Settlement 1957, June Settlement 1957, November Settlement 1957, Collections to First Monday in January 1958, Delinquent on First Monday in January 1958, Total Delinquent Tax and Penalty, REMARKS.

133-29

133-30

133-30

NORTH SYLVAN CARLYON'S SV

VILLAGE OF SYLVAN

1st SYLVAN BLDG

Assessment Roll and Tax List of Real Property in the Town of Sylvan of Sylvan County, Minnesota

Cass County, Minnesota, for Taxes for the Year 1956.

Form SCD-156-11-18-54-10 COMPANY, MINNEAPOLIS * Indicate Type of Property: R-Residential, C-Commercial, I-Industrial, U-Utility, F-Farm, L-Lakeshore, T-Timber, M-Mineral

Table with columns: IN WHOSE NAME ASSESSED, TO WHOM TRANSFERRED, DESCRIPTION OF PROPERTY, TRUE AND FULL VALUATIONS (RURAL, ALL OTHER, MACHINERY), VALUATIONS BY SCHOOL DISTRICTS AS EQUALIZED BY DEPARTMENT OF TAXATION, SOLD FOR TAXES, SPECIAL TAXES, TOTAL TAXES, PAID, WHEN PAID, Number of Receipt, March Settlement 1957, June Settlement 1957, November Settlement 1957, Collections to First Monday in January 1958, Delinquent on First Monday in January 1958, Total Delinquent Tax and Penalty, REMARKS.

133-29 133-30 NORTH SYLVAN CARLYON'S SYLVAN VILLAGE OF SYLVAN

Assessment Roll and Tax List of Real Property in the Town of Sylvan, Cass County, Minnesota, for Taxes for the Year 1956.

Indicate Type of Property: R-Residential, C-Commercial, I-Industrial, U-Utility, F-Farm, L-Lakeshore, T-Timber, M-Mineral

Form 501 (56) HILLIS-BAY COMPANY, MINNEAPOLIS

Table with columns: IN WHOSE NAME ASSESSED, TO WHOM TRANSFERRED, DESCRIPTION OF PROPERTY, TRUE AND FULL VALUATIONS, ASSESSED VALUATIONS, and FINAL EQUALIZED VALUE. Includes handwritten entries for Navillus Land Co., Albert L. Stark Corporation, and Curjuna Range Power Co.

Cass County, Minnesota, for Taxes for the Year 1956.

Table with columns: VALUATIONS BY SCHOOL DISTRICTS AS EQUALIZED BY DEPARTMENT OF TAXATION, Tax including State Homestead, State Tax on Non-Homestead, SPECIAL TAXES, TOTAL TAXES, PAID, WHEN PAID, Number of Receipt, March Settlement 1957, June Settlement 1957, November Settlement 1957, Collections to First Monday in January 1958, Delinquent on First Monday in January 1958, Total Delinquent Tax and Penalty, REMARKS. Includes handwritten notes and calculations.

133-29

133-30

Hand & Allard's 1st SYLVAN BEG. VILLAGE OF SYLVAN NORTH SYLVAN CARLSON'S SYLVAN

Assessment Roll and Tax List of Real Property in the Town of Sylvan, Cass County, Minnesota, for Taxes for the Year 1956.

* Indicate Type of Property: R-Residential, C-Commercial, I-Industrial, U-Utility, F-Farm, L-Lakeshore, T-Timber, M-Mineral

Table with columns: IN WHOSE NAME ASSESSED, TO WHOM TRANSFERRED, DESCRIPTION OF PROPERTY, TRUE AND FULL VALUATIONS, ASSESSED VALUATIONS, and FINAL EQUALIZED VALUE. Includes handwritten entries for Adolph + Ethel Staub, Dewey Mc Minn, N. St. Paper Co., Radio Pierce, and John E. & Vivian L. Eastman.

Cass County, Minnesota, for Taxes for the Year 1956.

Table with columns: VALUATIONS BY SCHOOL DISTRICTS AS EQUALIZED BY DEPARTMENT OF TAXATION, TAXES, PAID, WHEN PAID, Number of Receipt, March Settlement, June Settlement, November Settlement, Collections to First Monday in January, Delinquent on First Monday in January, Total Delinquent Tax and Penalty, and REMARKS. Includes handwritten tax amounts and payment dates.

132-29

133-29

133-30

1st SYLVAN SH... VILLAGE OF SYLVAN... NORTH SYLVAN CARLSON'S SYLVAN

Assessment Roll and Tax List of Real Property in the Town of Sylvan of Sydney County, Minnesota

* Indicate Type of Property: R-Residential, C-Commercial, I-Industrial, U-Utility, F-Farm, L-Lakeshore, T-Timber, M-Mineral

Form 50D (56) WILCOX-BAYNE COMPANY, MINNEAPOLIS

IN WHOSE NAME ASSESSED	TO WHOM TRANSFERRED	DESCRIPTION OF PROPERTY				TRUE AND FULL VALUATIONS							ASSESSED VALUATIONS					FINAL EQUALIZED VALUE	
		SUBDIVISION	Sec. or Lot	Town or Block	Rng.	Number of Acres of Land	LAND Exclusive of Structures and Improvements	BUILDINGS and Other Structures	MACHINERY Permanently Attached to Real Estate	TOTAL True and Full Value	RURAL			ALL OTHER		MACHINERY Permanently Attached to Real Estate	TOTAL ASSESSED VALUE		Total Assessed Value as Equalized by the Board of Review
											Acres	100ths	Homestead Up to \$4,000 20%	Over \$4,000 and Non-Homestead 33 1/4 %	Timber Land Class. 20%				
						Dollars	Dollars	Dollars	Dollars	Dollars	Dollars	Dollars	Dollars	Dollars	Dollars	Dollars	Dollars	Dollars	
		NE 1/4 of NE 1/4																	
		NW 1/4 of NE 1/4																	
		SW 1/4 of NE 1/4																	
		SE 1/4 of NE 1/4																	
		Lot 3																	
		NE 1/4 of NW 1/4																	
		NW 1/4 of NW 1/4																	
		SW 1/4 of NW 1/4																	
		SE 1/4 of NW 1/4																	
		NE 1/4 of SW 1/4																	
		NW 1/4 of SW 1/4																	
		SW 1/4 of SW 1/4																	
		SE 1/4 of SW 1/4																	
		NE 1/4 of SE 1/4																	
		NW 1/4 of SE 1/4																	
		SW 1/4 of SE 1/4																	
		SE 1/4 of SE 1/4																	

State of Minnesota

Cass County, Minnesota, for Taxes for the Year 1956.

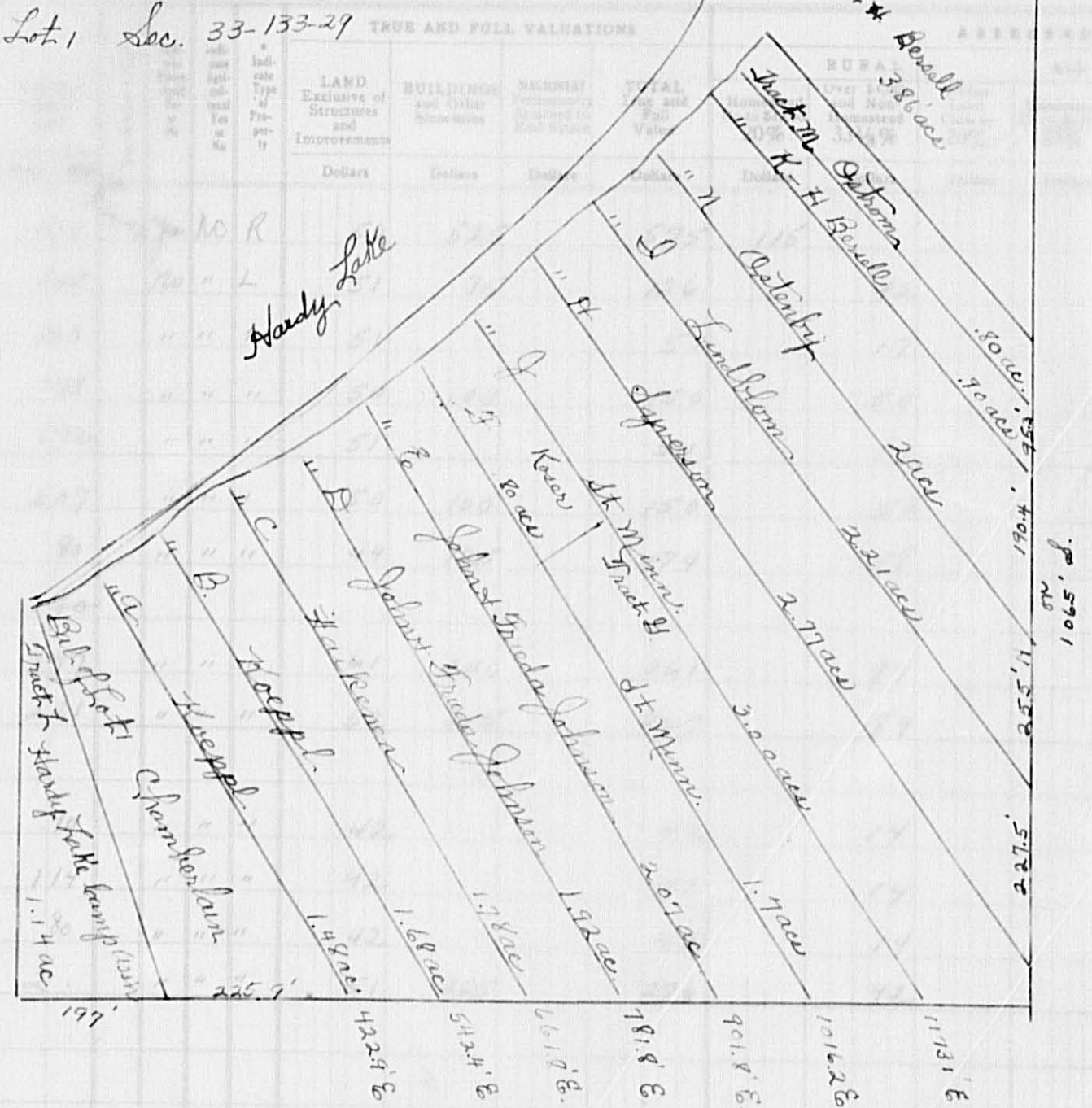
SOLD FOR TAXES	VALUATIONS BY SCHOOL DISTRICTS AS EQUALIZED BY DEPARTMENT OF TAXATION						Tax including State Homestead	State Tax on Non-Homestead	SPECIAL TAXES	TOTAL TAXES	PAID	WHEN PAID	Number of Receipt	March Settlement 1957	June Settlement 1957	Penalty	November Settlement 1957	Penalty	Collections to First Monday in January 1958	Penalty	Delinquent on First Monday in January 1958	Total Delinquent Tax and Penalty	REMARKS
	District No.	District No.	District No.	District No.	District No.	District No.																	
	Rate	Rate	Rate	Rate	Rate	Rate																	

133-29 133-30 NORTH SYLVAN CARLSON'S SYLVAN

Form 502 (56) WILSON-JONES COMPANY, MINNEAPOLIS

Lot 1 Sec. 33-133-29

IN WHOSE NAME ASSESSED	TO WHOM TRANSFERRED	DESCRIPTION	ACRES	LAND	BUILDINGS	SPECIAL	VALUATION	FINAL
		Subdivision		Excludes Structures and Improvements	and Other Structures	Property and Other	Total Assessed Value as Equalized by the Board of Review	EQUALIZED VALUE
Michael & Olga A. Chamberlain		Lot 1 as tract sold less 3/4 NE 1/4 of NE 1/4	115				115	
Joseph Kropff		1.48 acres of Lot 1 (D)	42				42	
"		1.63 acres of Lot 1 (D)	17				17	
Edward & Susan Heikkinen		1.78 acres of Lot 1 (D)	50				50	
Russell K. & Hilma G. Sigurdson		1.72 acres of Lot 1 (D)	17				17	
John G. & Freda G. Johnson		2.07 acres of Lot 1 (D)	50				50	
"		"	17				17	
Merrill & Inez Rosen		1.70 acres of Lot 1 (D)	58				58	
State of Minnesota		"						
Julius & Anna Sjeverson		2.77 acres of Lot 1 (D)	87				87	
Conrad C. & Elna M. Lindblom		2.91 acres of Lot 1 (D)	89				89	
State of Minnesota		"						
Donald H. & Leona Bersell		1.70 acres of Lot 1 (D)	14				14	
Hardy Lake Camp Ass'n Inc		1.14 acres of Lot 1 (D)	14				14	
Hilding D. & Eunice E. Ostrom		.80 acres of Lot 1 (D)	14				14	
Edwina & Vernon E. Ostrom		2 acres of Lot 1 (D)	42				42	
State of Minnesota		NE 1/4 of SE 1/4						
State of Minnesota		NW 1/4 of SE 1/4						
State of Minnesota		SW 1/4 of SE 1/4						
State of Minnesota		SE 1/4 of SE 1/4						
Aug & Hilda Bersell		3.86 acres of Lot 1	386	25	250		67	67
		(continued on next page for section 33) 25 55		129	1815		182	544



OTHER	MACHINERY	TOTAL ASSESSED	Total Assessed Value as Equalized by the Board of Review	FINAL EQUALIZED VALUE	VALUATIONS BY SCHOOL DISTRICTS AS EQUALIZED BY DEPARTMENT OF TAXATION						SPECIAL TAXES	TOTAL TAXES	PAID	WHEN PAID	Number of Receipt	March Settlement 1957	June Settlement 1957	Penalty	November Settlement 1957	Penalty	Collections to First Monday in January 1956	Penalty	Delinquent on First Monday in January 1956	Total Delinquent Tax and Penalty	REMARKS
					District No.	District Rate	District No.	District Rate	District No.	District Rate															
	Over \$4,000 and Non-Homestead 40%		Dollars	Dollars																					
			Dollars	Dollars																					

SOLD FOR TAXES	VALUATIONS BY SCHOOL DISTRICTS AS EQUALIZED BY DEPARTMENT OF TAXATION						Tax including State Homestead	State Tax on Non-Homestead	SPECIAL TAXES	TOTAL TAXES	PAID	WHEN PAID	Number of Receipt	March Settlement 1957	June Settlement 1957	Penalty	November Settlement 1957	Penalty	Collections to First Monday in January 1956	Penalty	Delinquent on First Monday in January 1956	Total Delinquent Tax and Penalty	REMARKS		
	District No.	District Rate	District No.	District Rate	District No.	District Rate																			

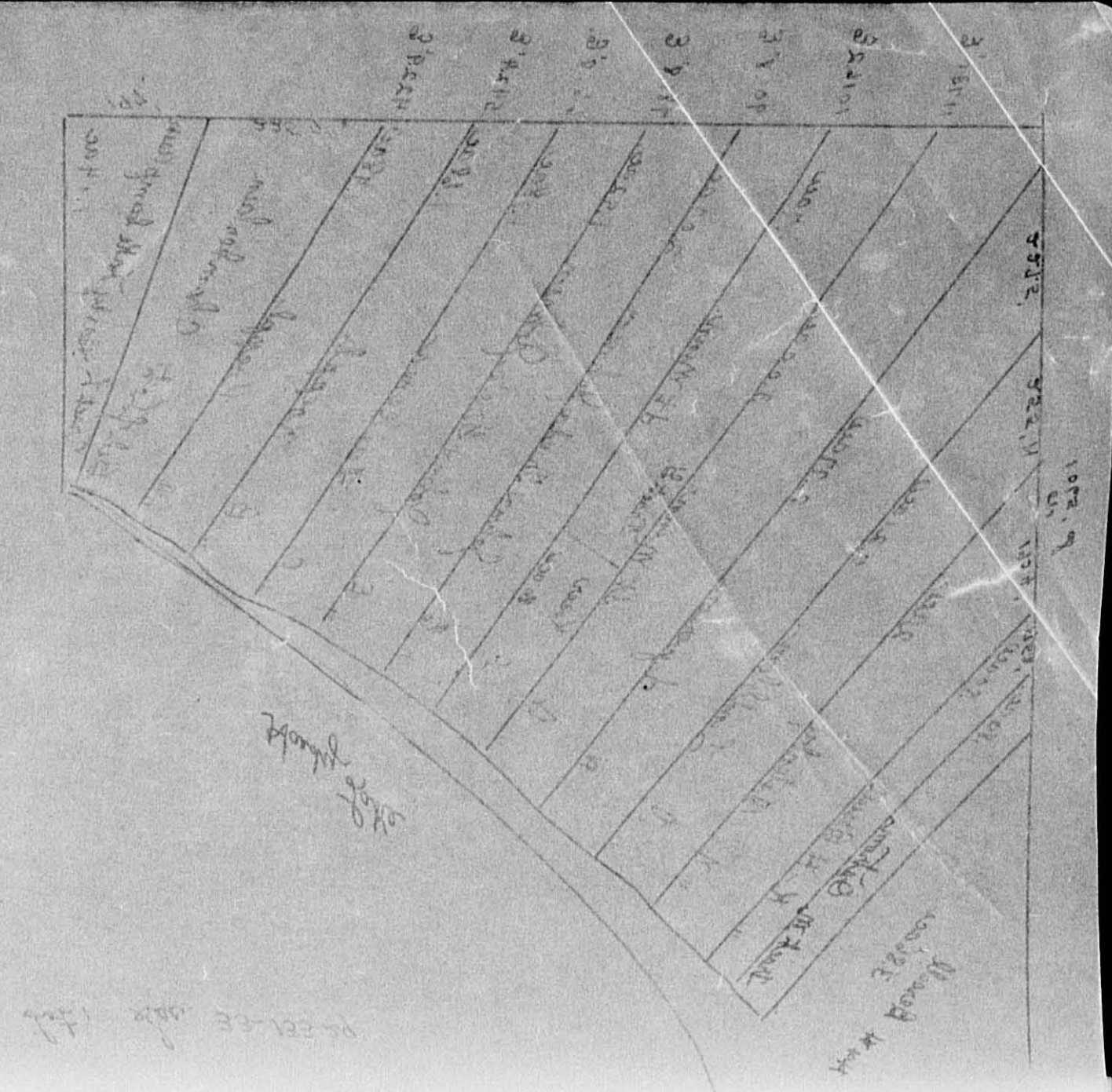
133-29

Add'n to SYLVAN BELL VILLAGE OF SYLVAN COUNTY, MINN. NORTH SYLVAN CARLYON'S SYLVAN BELL VILLAGE OF SYLVAN COUNTY, MINN.

Assessment Roll and Tax List of Real Property in the Town of Sylvan

Indicate Type of Property: R-Residential, C-Commercial, I-Industrial, U-Utility, F-Farm, L-Lakeshore, T-Timber, M-Mineral

Table with columns: IN WHOSE NAME ASSESSED, TO WHOM TRANSFERRED, DESCRIPTION OF PROPERTY, TRUE AND FULL VALUATIONS, ASSESSED VALUATIONS, and FINAL EQUALIZED VALUE. Includes handwritten entries for various lots and owners like Michael W. Olga W. Chamberlain.



Cass County, Minnesota, for Taxes for the Year 1956.

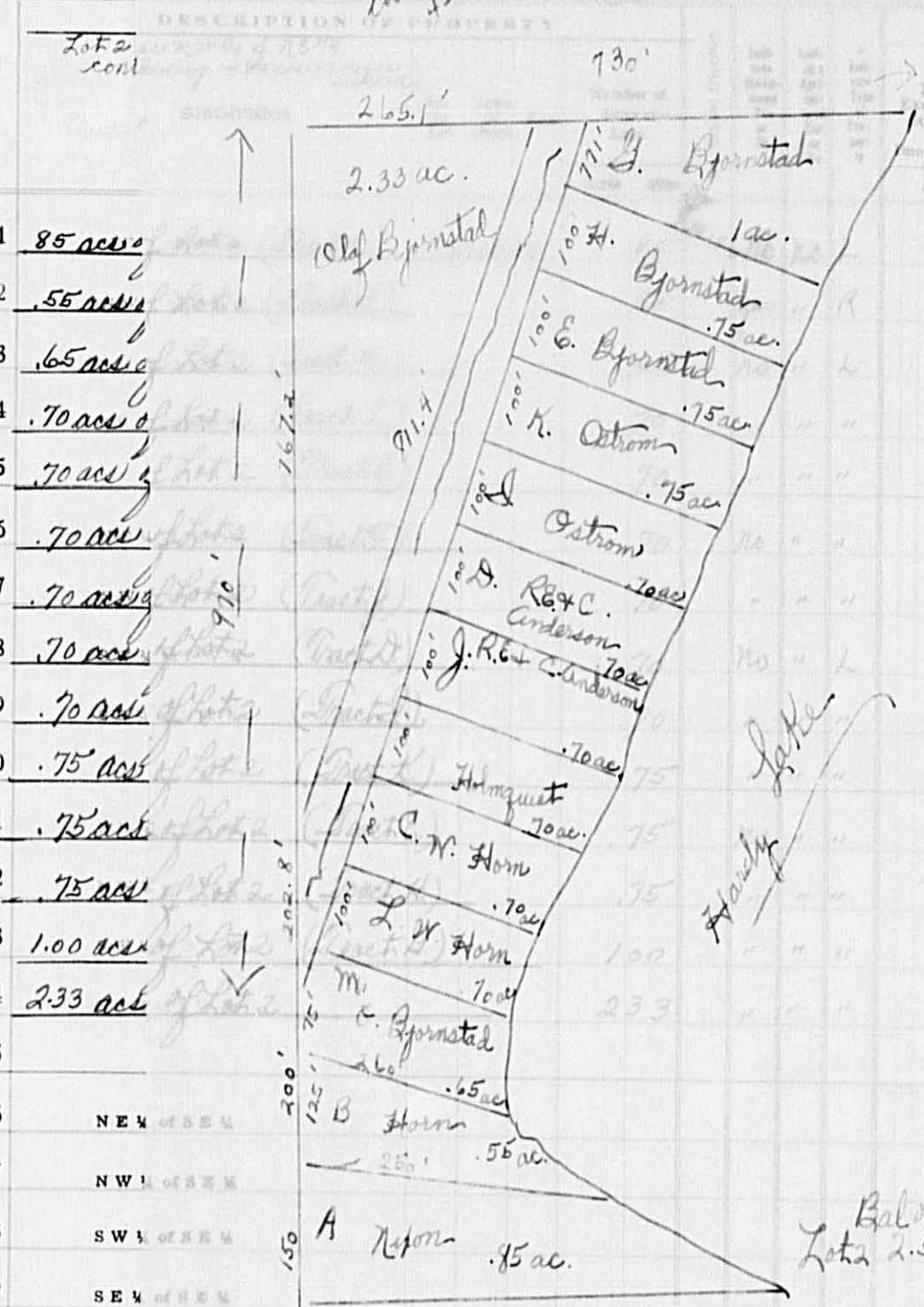
Table with columns: VALUATIONS BY SCHOOL DISTRICTS AS EQUALIZED BY DEPARTMENT OF TAXATION, TAXES, PAID, WHEN PAID, and various tax amounts. Includes handwritten entries for lots 115 through 20.

Vertical text on the right edge: NORTH SYLVAN CANTON'S SYLVAN VILLAGE OF SYLVAN

Assessment Roll and Tax List of Real Property in the Township of Sylva, Cass County, Minnesota

Form 500 (56) WILSON-JAY COMPANY, MINNEAPOLIS

IN WHOSE NAME ASSESSED TO WHOM TRANSFERRED



TRUE AND FULL VALUATIONS ASSESSED VALUATIONS

ALL OTHER MACHINERY PERMANENTLY ATTACHED TO REAL ESTATE TOTAL ASSESSED VALUE Total Assessed Value as Equalized by the Board of Review FINAL EQUALIZED VALUE

Section	Acres	Assessed Value	Final Equalized Value	VALUATIONS BY SCHOOL DISTRICTS AS EQUALIZED BY DEPARTMENT OF TAXATION					State Tax on Non-Homestead	SPECIAL TAXES	TOTAL TAXES	PAID	WHEN PAID	Number of Receipt	March Settlement 1957	June Settlement 1957	Penalty	November Settlement 1957	Penalty	Collections to First Monday in January 1958	Penalty	Delinquent on First Monday in January 1958	Total Delinquent Tax and Penalty	REMARKS		
				District No.	District No.	District No.	District No.	District No.																	District No.	
1	85 ac.	107	107						25 14	58	25 72	1	PAID IN FULL MAY 1 8 1957	6497		25 72										
2	55 ac.	72	72						16 92		16 92	2	PAID IN FULL DEC 2 3 1957	17445						16 92	68					
3	65 ac.	10	10						2 34	06	2 40	3	PAID IN FULL MAY 1 8 1957	6497		2 40										
4	70 ac.	65	65						15 26	34	15 60	4	PAID IN FULL MAY 1 8 1957			15 60										
5	70 ac.	10	10						2 34	06	2 40	5	PAID IN FULL MAY 1 8 1957	6501		2 40										
6	70 ac.	45	45						10 56	24	10 80	6	PAID IN FULL MAY 2 1 1957	6263		10 80										
7	70 ac.	12	12						2 82	06	2 88	7	PAID IN FULL MAY 1 8 1957			2 88										
8	70 ac.	73	73						17 14	38	17 52	8	PAID IN FULL MAY 1 8 1957	6508		17 52										
9	70 ac.	45	45						10 56	24	10 80	9	PAID IN FULL MAY 3 1 1957	9087		10 80										
10	75 ac.	12	12						2 82	06	2 88	10	PAID IN FULL MAY 3 1 1957			2 88										
11	75 ac.	18	18						4 22	10	4 32	11	PAID IN FULL MAY 1 8 1957			4 32										
12	75 ac.	8	8						1 88	04	1 92	12	PAID IN FULL MAY 1 8 1957			1 92										
13	1.00 ac.	10	10						2 34	06	2 40	13	PAID IN FULL MAY 1 8 1957	6499		2 40										
14	2.33 ac.	9	9						2 12	04	2 16	14	PAID IN FULL MAY 1 8 1957			2 16										
15												15														
16												16														
17												17														
18												18														
19												19														
20												20														

(Continued on next page for section 33)

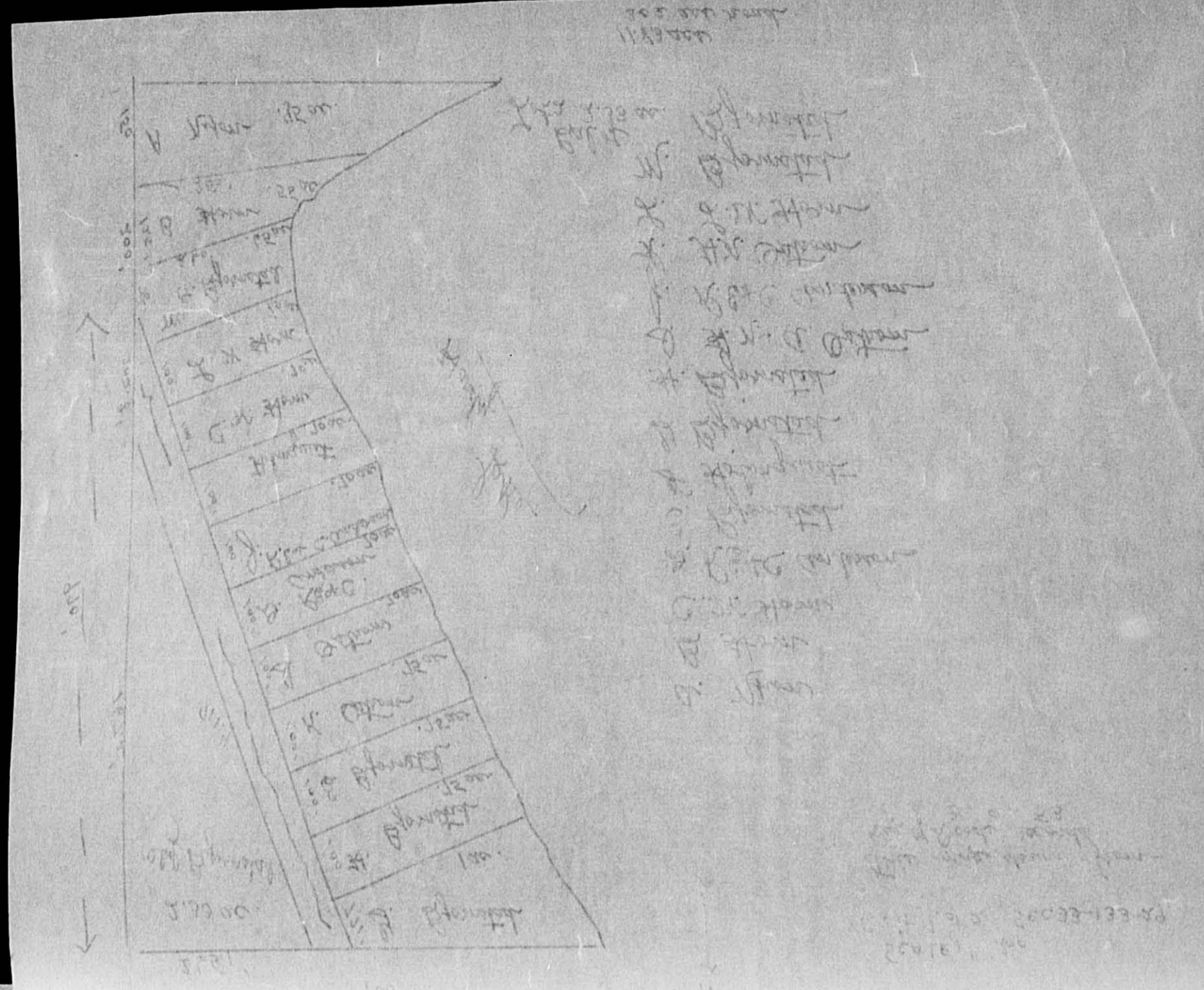
11.82 ac 302 ac road

Handwritten numerical data at the bottom of the page, including '496' and other numbers.

Cass County, Minnesota, for Taxes for the Year 1956.

Main table of the right page, continuing the tax assessment data with columns for school districts, taxes, and payments.

Vertical text on the far right edge of the page, including 'ADD IN TO SYLVAN BELT' and 'NORTH SYLVAN CARLSON'S SYLVAN'.



Assessment Roll a

Form 800 (156) ... *Indicate Type of Property: R-Residential, C-Commercial, I-Industrial, U-Utility, F-Farm, L-Lakeshore, T-Timber, M-Mineral

IN WHOSE NAME ASSESSED	TO WHOM TRANSFERRED	SUBDIVISION	Sec. of Lot	Town or Block	Rng.	Number of Acres of Land	TRUE AND FULL VALUATIONS				ASSESSED VALUATIONS							FINAL EQUALIZED VALUE	
							LAND Exclusive of Structures and Improvements	BUILDINGS and Other Structures	MACHINERY Permanently Attached to Real Estate	TOTAL True and Full Value	RURAL		ALL OTHER			MACHINERY Permanently Attached to Real Estate	TOTAL ASSESSED VALUE		Total Assessed Value as Equalized by the Board of Review
											Homestead Up to \$4,000	Over \$4,000 and Non-Homestead	Timber Land Class Je 20%	Homestead Up to \$4,000	Over \$4,000 and Non-Homestead				
Allison H & Esther L. Nelson		85 ac of Lot 2 (Tract 1)	33	133	77	.85	70	L	46	275	321	107				107			
Walter E. & Melvina H. Horn		55 ac of Lot 2 (Tract 1)				55	70	R	30	330	360	72				72			
Olaf Bjornstad		65 ac of Lot 2 (Tract 1)				65	70	L	30		30	10				10			
Walter E. & Melvina H. Horn		70 ac of Lot 2 (Tract 1)				70	"	"	35	160	195	65				65			
"		70 ac of Lot 2 (Tract 1)				70	"	"	30		30	10				10			
Herman Holmquist		70 ac of Lot 2 (Tract 1)				70	70	"	35	100	135	45				45			
Ralph E. & Carmelita Anderson		70 ac of Lot 2 (Tract 1)				70	"	"	36		36	12				12			
"		70 ac of Lot 2 (Tract 1)				70	"	"	44	175	219	73				73			
Harry N. & Alice A. Ostrom		70 ac of Lot 2 (Tract 1)				70	"	"	35	100	135	45				45			
"		75 ac of Lot 2 (Tract 1)				75	"	"	36		36	12				12			
Olaf Bjornstad		75 ac of Lot 2 (Tract 1)				75	70	"	30	24	54	18				18			
"		75 ac of Lot 2 (Tract 1)				75	"	"	24		24	8				8			
"		1.00 ac of Lot 2 (Tract 1)				1.00	"	"	30		30	10				10			
"		233 ac of Lot 2				233	"	"	27		27	9				9			
16		NE 1/4 of SE 1/4																	
17		NW 1/4 of SE 1/4																	
18		SW 1/4 of SE 1/4																	
19		SE 1/4 of SE 1/4																	
20																			

(Continued on next page for section 33)

Cass County, Minnesota, for Taxes for the Year 1956.

SOLD FOR TAXES	VALUATIONS BY SCHOOL DISTRICTS AS EQUALIZED BY DEPARTMENT OF TAXATION						Tax Including State Homestead	State Tax on Non-Homestead	SPECIAL TAXES	TOTAL TAXES	PAID	WHEN PAID	Number of Receipt	March Settlement 1957	June Settlement 1957	November Settlement 1957	Collections to First Monday in January 1958	Delinquent on First Monday in January 1958	Total Delinquent Tax and Penalty	REMARKS
	District No.	District No.	District No.	District No.	District No.	District No.														
	Rate	Rate	Rate	Rate	Rate	Rate														
	107						25.14	58	25.72	1	PAID IN FULL	MAY 18 1957	6497							
	72						16.92		16.92	2	PAID IN FULL	DEC 23 1957	17445							16.92 68
	10						2.34	06	2.40	3	PAID IN FULL	MAY 18 1957	6497							2.40
	65						15.26	34	15.60	4	PAID IN FULL	MAY 18 1957								15.60
	10						2.34	06	2.40	5	PAID IN FULL	MAY 18 1957								2.40
	45						10.56	24	10.80	6	PAID IN FULL	MAY 21 1957	6263							10.80
	12						2.82	06	2.88	7	PAID IN FULL	MAY 18 1957								2.88
	73						17.14	38	17.52	8	PAID IN FULL	MAY 18 1957								17.52
	45						10.56	24	10.80	9	PAID IN FULL	MAY 31 1957	9087							10.80
	12						2.82	06	2.88	10	PAID IN FULL	MAY 31 1957								2.88
	18						4.22	10	4.32	11	PAID IN FULL	MAY 18 1957								4.32
	8						1.88	04	1.92	12	PAID IN FULL	MAY 18 1957								1.92
	10						2.34	06	2.40	13	PAID IN FULL	MAY 18 1957	6497							2.40
	9						2.12	04	2.16	14	PAID IN FULL	MAY 18 1957								2.16
										15										
										16										
										17										
										18										
										19										
										20										

H 72
424
496
116.46 2.26
118.72
101.50
16.92

Assessment Roll and Tax List of Real Property in the Town of Lyburn, of Lyburn

* Indicate Type of Property: R-Residential, C-Commercial, I-Industrial, U-Utility, F-Farm, L-Lakeshore, T-Timber, M-Mineral

Form 501 (56) MILLER-BAYB COMPANY, MINNEAPOLIS

Table with columns: IN WHOSE NAME ASSESSED, TO WHOM TRANSFERRED, DESCRIPTION OF PROPERTY, TRUE AND FULL VALUATIONS, ASSESSED VALUATIONS, FINAL EQUALIZED VALUE. Includes handwritten entries for Hardy Lake Camps, Ole Peterson, John C. Ferris, Gordon K. Rasmussen, etc.

(Continued on next page for section 33) 292.15

Cass County, Minnesota, for Taxes for the Year 1956.

Table with columns: VALUATIONS BY SCHOOL DISTRICTS AS EQUALIZED BY DEPARTMENT OF TAXATION, TAX INCLUDING STATE HOMESTEAD, SPECIAL TAXES, TOTAL TAXES, PAID, WHEN PAID, Number of Receipt, March Settlement, June Settlement, November Settlement, Collections to First Monday in January, Delinquent on First Monday in January, Total Delinquent Tax and Penalty, REMARKS. Includes handwritten entries for tax payments and settlements.

132-29

133-30

133-30

VILLAGE OF SYLVAN

NORTH SYLVAN

CARLYON'S ST

Assessment Roll and Tax List of Real Property in the Town of *Sylvan* of *Sylvan* County, Minnesota

* Indicate Type of Property: R-Residential, C-Commercial, I-Industrial, U-Utility, F-Farm, L-Lakeshore, T-Timber, M-Mineral

Form 5C (1951) UNIFORM STATE BOARD OF EQUALIZATION, MINNEAPOLIS

IN WHOSE NAME ASSESSED	TO WHOM TRANSFERRED	DESCRIPTION OF PROPERTY				No. School District	Indicate Homestead Yes or No	Indicate Agricultural Yes or No	Indicate Type of Property	TRUE AND FULL VALUATIONS			ASSESSED VALUATIONS						FINAL EQUALIZED VALUE			
		SUBDIVISION	Sec. or Lot	Town or Block	King.					Number of Acres of Land	LAND Exclusive of Structures and Improvements	BUILDINGS and Other Structures	MACHINERY Permanently Attached to Real Estate	TOTAL True and Full Value	RURAL		ALL OTHER			MACHINERY Permanently Attached to Real Estate	TOTAL ASSESSED VALUE	Total Assessed Value as Equalized by the Board of Review
															Acres	100ths	Homestead Up to \$4,000 20%	Over \$4,000 and Non-Homestead 33 1/3%				
		NE 1/4 of NE 1/4				1																
		NW 1/4 of NE 1/4				2																
		SW 1/4 of NE 1/4				3																
		SE 1/4 of NE 1/4				4																
	<i>Alvin O. Johnson 1/3, Adolph Hagson 1/6, John Hagson 1/6, Hjelmahl A. Larsson 1/6, Clarence B. Larsson 1/6</i>	<i>Lot 1</i>			5550			10	T		201			201								
		NE 1/4 of NW 1/4				6																
		NW 1/4 of NW 1/4				7																
		SW 1/4 of NW 1/4				8																
		SE 1/4 of NW 1/4				9																
		NE 1/4 of SW 1/4				10																
		NW 1/4 of SW 1/4				11																
		SW 1/4 of SW 1/4				12																
		SE 1/4 of SW 1/4				13																
		NE 1/4 of SE 1/4				14																
		NW 1/4 of SE 1/4				15																
		SW 1/4 of SE 1/4				16																
		SE 1/4 of SE 1/4				17																
						18																
						19																
						20																
					5550						201			201								

Cass County, Minnesota, for Taxes for the Year 1956.

SOLD FOR TAXES	VALUATIONS BY SCHOOL DISTRICTS AS EQUALIZED BY DEPARTMENT OF TAXATION						Tax including State Homestead	State Tax on Non-Homestead	SPECIAL TAXES	TOTAL TAXES	PAID	WHEN PAID	Number of Receipt	March Settlement 1957	June Settlement 1957	Penalty	November Settlement 1957	Penalty	Collections to First Monday in January 1958	Penalty	Delinquent on First Monday in January 1958	Total Delinquent Tax and Penalty	REMARKS
	District No.	District No.	District No.	District No.	District No.	District No.																	
	Rate	Rate	Rate	Rate	Rate	Rate																	

Add'n to 1st SYLVAN SHA VILLAGE OF SYLVAN CO. NORTH SYLVAN CARYON'S SYLVAN CO.

Assessment Roll and Tax List of Real Property in the Town of Sylvan, of Cass County, Minnesota.

Cass County, Minnesota, for Taxes for the Year 1956.

Form 5C (56) DILLON-BAILEY COMPANY, MINNEAPOLIS

* Indicate Type of Property: R-Residential, C-Commercial, I-Industrial, U-Utility, F-Farm, L-Lakeshore, T-Timber, M-Mineral

		DESCRIPTION OF PROPERTY				TRUE AND FULL VALUATIONS										FINAL EQUALIZED VALUE	
IN WHOSE NAME ASSESSED	TO WHOM TRANSFERRED	SUBDIVISION	Sec. of Lot	Town or Block	Rng.	Number of Acres of Land	Machinery Permanently Attached to Real Estate	RURAL		ALL OTHER				Machinery Permanently Attached to Real Estate	TOTAL ASSESSED VALUE	Total Assessed Value as Equalized by the Board of Review	Dollars
								Homestead Up to \$4,000 20%	Over \$4,000 and Non-Homestead 33 1/3%	Homestead Up to \$4,000 25%	Over \$4,000 and Non-Homestead 40%	Homestead Up to \$4,000	Over \$4,000 and Non-Homestead				
						Acres	Dollars	Dollars	Dollars	Dollars	Dollars	Dollars	Dollars	Dollars	Dollars	Dollars	
State of Minnesota		NE 1/4 of NE 1/4 Lot 1		R 133	30												
State of Minnesota		NW 1/4 of NE 1/4 Lot 2															
State of Minnesota		SW 1/4 of NE 1/4															
State of Minnesota		SE 1/4 of NE 1/4															
State of Minnesota																	
State of Minnesota		NE 1/4 of NW 1/4 Lot 3															
State of Minnesota		NW 1/4 of NW 1/4 Lot 4															
State of Minnesota		SW 1/4 of NW 1/4															
State of Minnesota		SE 1/4 of NW 1/4															
JAMES A. JUSTICE	Nicholson	Lot 5															
Am. P. Robinson		NE 1/4 of SW 1/4 Lot 6				34	No. 3/4 F	122	700			822	274	274			
"	"	NW 1/4 of SW 1/4 Lot 5 less 1 ac.				40	" " "	240				240	80	80			
"	"	SW 1/4 of SW 1/4				44 25	" " "	264				264	88	88			
Wm. R. & Irene E. Fisher		1 ac. of Lot 5				1	" SW L	50	325			375	125	125			
State of Minnesota		Lot 8 less Sylvan Shady Shore															
State of Minnesota		Lot 7 less Sylvan Shady Shore															
						119 25		676	1025			1701	567	567			

SOLD FOR TAXES	VALUATIONS BY SCHOOL DISTRICTS AS EQUALIZED BY DEPARTMENT OF TAXATION						Tax including State Homestead	State Tax on Non-Homestead	SPECIAL TAXES	TOTAL TAXES	PAID	WHEN PAID	Number of Receipt	March Settlement 1957	June Settlement 1957	Penalty	November Settlement 1957	Penalty	Collections to First Monday in January 1958	Penalty	Delinquent on First Monday in January 1958	Total Delinquent Tax and Penalty	REMARKS	
	District No. No. 12	District No. No. 12	District No. No. 12	District No. No. 12	District No. No. 12	District No. No. 12																		Rate
1																								
2																								
3																								
4																								
5																								
6																								
7																								
8																								
9																								
10																								
11	5088	274																						PAID IN FULL FEB 28 1957
12	1696	80																						PAID IN FULL FEB 28 1957
13	1866	88																						PAID IN FULL FEB 28 1957
14																								
15	2650	125																						PAID IN FULL MAY 31 1957
16																								
17																								
18																								
19																								
20																								

132-29 133-30

132-29 133-30

Land & Area's 1st SYLVAN Bldg. VILLAGE OF SYLVAN NORTH SYLVAN CARLTON'S SYLVAN

Assessment Roll and Tax List of Real Property in the *Town* of *Sylvan*,

Cass County, Minnesota, for Taxes for the Year 1956.

* Indicate Type of Property: R-Residential, C-Commercial, I-Industrial, U-Utility, F-Farm, L-Lakeshore, T-Timber, M-Mineral

Form 5C (156) GLENDA SAYS COMPANY, MINNEAPOLIS

IN WHOSE NAME ASSESSED	TO WHOM TRANSFERRED	DESCRIPTION OF PROPERTY				TRUE AND FULL VALUATIONS										ASSESSED VALUATIONS										SOLD FOR TAXES	VALUATIONS BY SCHOOL DISTRICTS AS EQUALIZED BY DEPARTMENT OF TAXATION					Tax including State Homestead	State Tax on Non-Homestead	SPECIAL TAXES	TOTAL TAXES	PAID	WHEN PAID	Number of Receipt	March Settlement 1957	June Settlement 1957	Penalty	November Settlement 1957	Penalty	Collections to First Monday in January 1958	Penalty	Delinquent on First Monday in January 1958	Total Delinquent Tax and Penalty	REMARKS
		SUBDIVISION	Sec or Lot	Town or Block	No. of Acres of Land	LAND Exclusive of Structures and Improvements	BUILDINGS and Other Structures	MACHINERY Permanently Attached to Real Estate	TOTAL True and Full Value	RURAL		ALL OTHER			MACHINERY Permanently Attached to Real Estate	TOTAL ASSESSED VALUE	Total Assessed Value as Equalized by the Board of Review	FINAL EQUALIZED VALUE	District No.	District No.	District No.	District No.	District No.																									
										Homestead Up to \$1,000 20%	Over \$4,000 and Non-Homestead 33 1/3%	Timber Land Class 3e 20%	Homestead Up to \$4,000 25%	Over \$4,000 and Non-Homestead 40%					Rate	Rate	Rate	Rate	Rate																									
										Acres	100ths	Dollars	Dollars	Dollars					Dollars	Dollars	Dollars	Dollars	Dollars	Dollars	Mills		Mills	Mills	Mills	Mills																		
<i>Orville F. & Rose M. Ruettdaschel</i>	<i>State of Minnesota</i>	<i>1</i>	<i>3 133</i>	<i>30</i>	<i>3884</i>	<i>NO</i>	<i>F</i>											<i>1</i>	<i>77</i>	<i>77</i>	<i>77</i>	<i>1632</i>	<i>42</i>		<i>1674</i>	<i>1</i>	<i>Forfeited</i>	<i>10-1-57</i>											<i>16.74 Cancelled</i>									
"	"	<i>2</i>			<i>3850</i>	"	"											<i>2</i>	<i>70</i>	<i>70</i>	<i>70</i>	<i>1484</i>	<i>38</i>		<i>1522</i>	<i>2</i>	<i>Forfeited</i>	<i>10-1-57</i>											<i>15.22</i>									
<i>State of Minnesota</i>	"	<i>3</i>																<i>3</i>								<i>3</i>																						
<i>State of Minnesota</i>	"	<i>4</i>																<i>4</i>								<i>4</i>																						
<i>Orville F. & Rose M. Ruettdaschel</i>	<i>State of Minnesota</i>	<i>6</i>			<i>3814</i>	<i>70</i>	"											<i>6</i>	<i>76</i>	<i>76</i>	<i>76</i>	<i>1610</i>	<i>40</i>		<i>1650</i>	<i>6</i>	<i>Forfeited</i>	<i>10-1-57</i>													<i>16.50 Cancelled</i>							
"	"	<i>7</i>			<i>3778</i>	"	"											<i>7</i>	<i>72</i>	<i>72</i>	<i>72</i>	<i>1526</i>	<i>38</i>		<i>1564</i>	<i>7</i>	<i>Forfeited</i>	<i>10-1-57</i>												<i>15.64</i>								
"	"	<i>8</i>			<i>40</i>	"	"											<i>8</i>	<i>162</i>	<i>162</i>	<i>162</i>	<i>3434</i>	<i>86</i>		<i>3520</i>	<i>8</i>	<i>Forfeited</i>	<i>10-1-57</i>													<i>35.20</i>							
"	"	<i>9</i>			<i>40</i>	"	"											<i>9</i>	<i>67</i>	<i>67</i>	<i>67</i>	<i>1420</i>	<i>36</i>		<i>1456</i>	<i>9</i>	<i>Forfeited</i>	<i>10-1-57</i>												<i>14.56</i>								
<i>State of Minnesota</i>	"	<i>11</i>																<i>11</i>								<i>11</i>																						
<i>State of Minnesota</i>	"	<i>12</i>																<i>12</i>								<i>12</i>																						
<i>Leslie E. & Rose M. Dietz</i>	"	<i>13</i>			<i>40</i>	<i>Yps</i>	<i>F</i>	<i>280</i>	<i>550</i>									<i>13</i>	<i>166</i>	<i>166</i>	<i>166</i>	<i>3518</i>		<i>14478</i>	<i>3518</i>	<i>13</i>	<i>2nd Half Paid</i>	<i>MAY 31 1957</i>	<i>14478</i>																			
"	"	<i>14</i>			<i>40</i>	"	"	<i>120</i>										<i>14</i>	<i>24</i>	<i>24</i>	<i>24</i>	<i>508</i>		<i>8884</i>	<i>508</i>	<i>14</i>	<i>2nd Half Paid</i>	<i>SEP 16 1957</i>	<i>8884</i>	<i>-1759</i>																		
<i>State of Minnesota</i>	"	<i>16</i>																<i>16</i>								<i>16</i>																						
<i>State of Minnesota</i>	"	<i>17</i>																<i>17</i>								<i>17</i>																						
<i>State of Minnesota</i>	"	<i>18</i>																<i>18</i>								<i>18</i>																						
<i>State of Minnesota</i>	"	<i>19</i>																<i>19</i>								<i>19</i>																						
		<i>20</i>																<i>20</i>								<i>20</i>																						
					<i>31326</i>				<i>1857</i>	<i>665</i>		<i>2522</i>	<i>190</i>	<i>524</i>				<i>714</i>									<i>H 190</i>	<i>524</i>	<i>714</i>	<i>H 2</i>	<i>15132</i>	<i>280</i>		<i>15412</i>				<i>2013</i>	<i>2013</i>				<i>113.86</i>					

Land & Aerial Survey 1st SYLVAN SH... VILLAGE OF SYLVAN... NORTH SYLVAN CARRISON'S SY...

Assessment Roll and Tax List of Real Property in the Down of Sylvan

* Indicate Type of Property: R-Residential, C-Commercial, I-Industrial, U-Utility, F-Farm, L-Lakeshore, T-Timber, M-Mineral

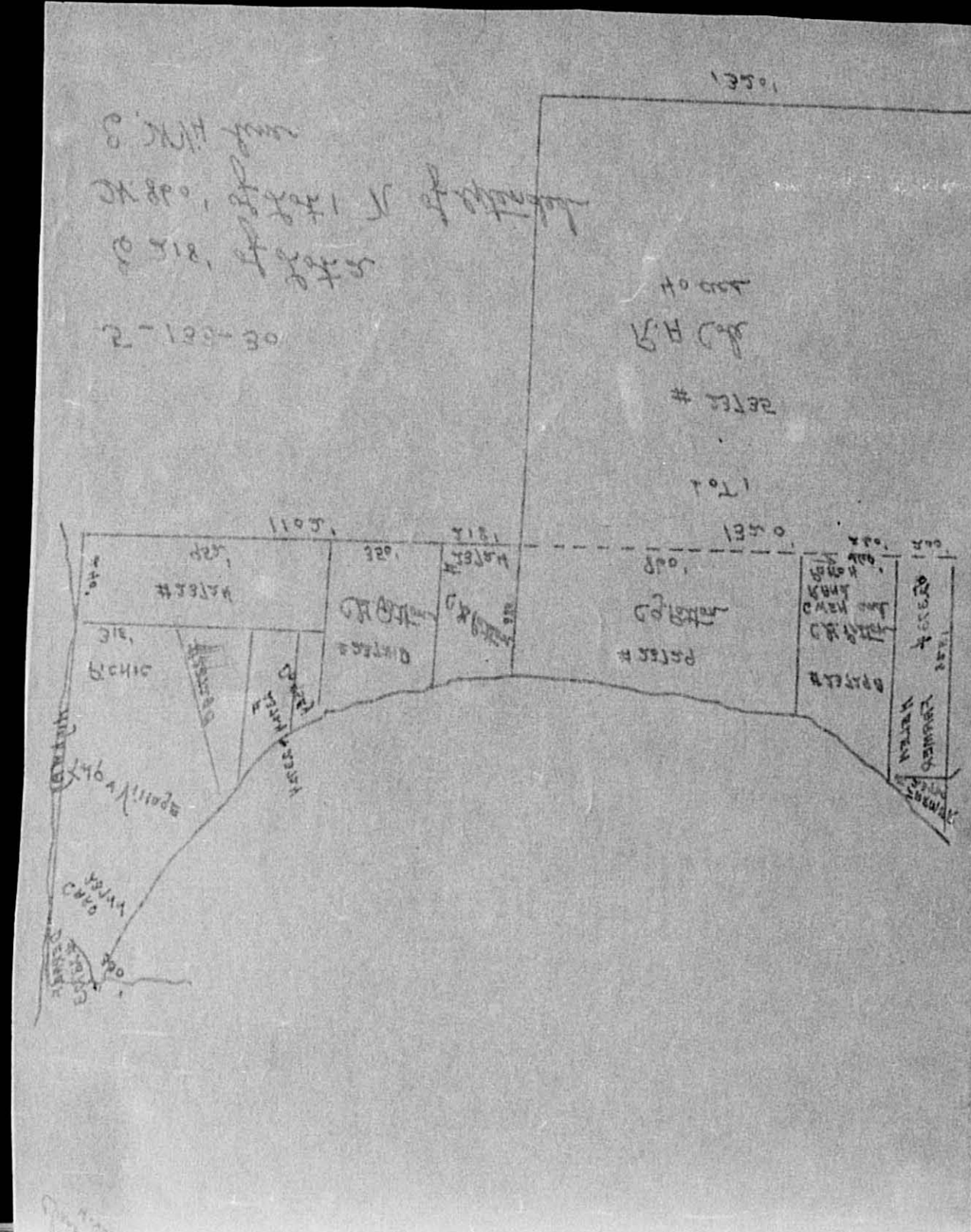


Table with columns: IN WHOSE NAME ASSESSED, TO WHOM TRANSFERRED, SUBDIVISION, TRUE AND FULL VALUATIONS, ASSESSED VALUATIONS, and FINAL EQUALIZED VALUE. Includes handwritten entries for property descriptions and names like 'Ralph A. & Cora A. Cole'.

Cass County, Minnesota, for Taxes for the Year 1956.

Table with columns: VALUATIONS BY SCHOOL DISTRICTS AS EQUALIZED BY DEPARTMENT OF TAXATION, TAXES, PAID, WHEN PAID, Number of Receipts, March Settlement, June Settlement, November Settlement, Collections to First Monday in January, Delinquent as First Monday in January, Total Delinquent Tax and Penalty, and REMARKS. Includes handwritten entries for tax amounts and payment dates.

132-29

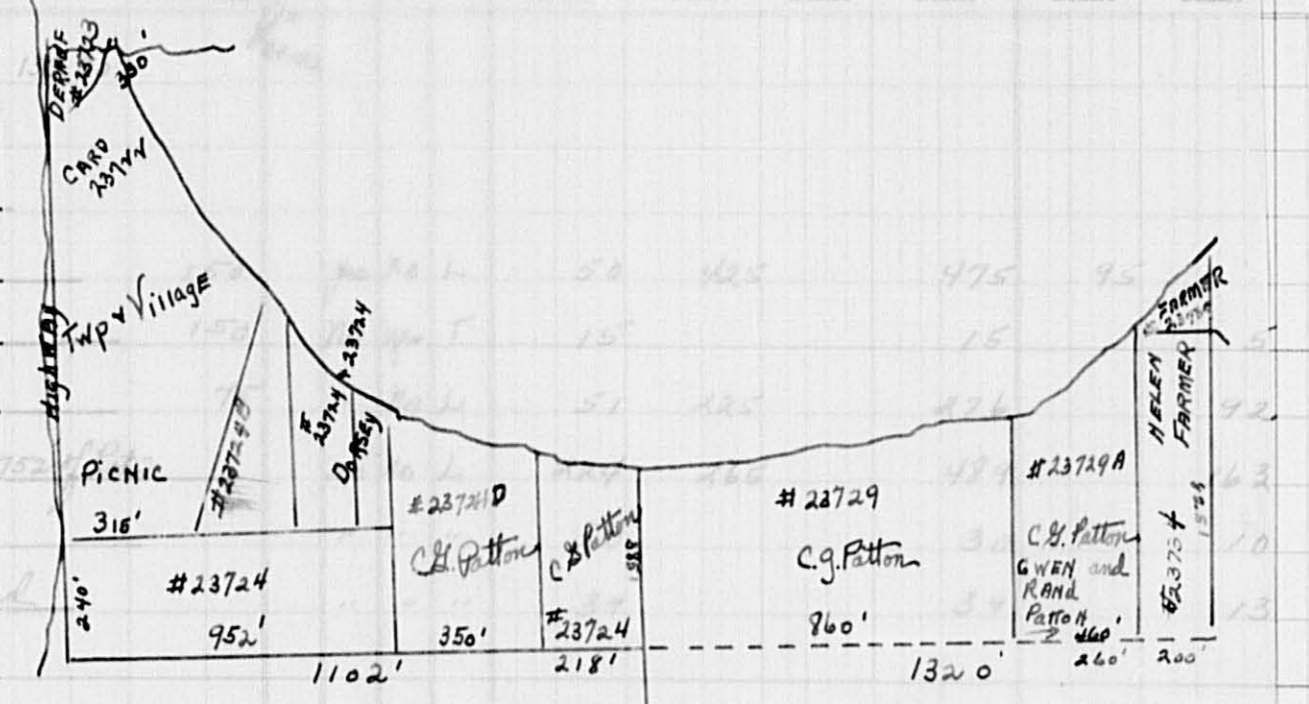
133-30

SYLVAN VILLAGE OF SYLVAN NORTH SYLVAN CARLSON'S SYLVAN

Assessment Roll and Tax List of F

City of Sylvan, Minnesota
Type of Property: R-Residential, C-Commercial, I-Industrial, U-Utility, F-Farm, L-Lakeshore, T-Timber, M-Mineral

Table with columns: IN WHOSE NAME ASSESSED, TO WHOM TRANSFERRED, SUBDIVISION, Sec. or Lot, TRUE AND FULL VALUATIONS (LAND, BUILDINGS, MACHINERY, TOTAL), ASSESSED VALUATIONS (ALL OTHER, MACHINERY, TOTAL ASSESSED VALUE), FINAL EQUALIZED VALUE.



Twp. of Sylvan, May Fairview & Village of Village
Edwin Newton
Harnet B. Derauf
Edward J. Dorsey
Carroll St. Luwendel Patton
Edward J. & Agnes J. Dorsey
Ralph A. & Cora A. Cole
Helon A. Farmer
Donald R. Farmer
Carroll St. Luwendel Patton

133-30

(continued on next page)

Cass County, Minnesota, for Taxes for the Year 1956.

Table with columns: SOLD FOR TAXES, VALUATIONS BY SCHOOL DISTRICTS AS EQUALIZED BY DEPARTMENT OF TAXATION, Tax including State Homestead, State Tax on Non-Homestead, SPECIAL TAXES, TOTAL TAXES, PAID, WHEN PAID, Number of Receipt, March Settlement 1957, June Settlement 1957, Penalty, November Settlement 1957, Penalty, Collections to First Monday in January 1958, Delinquent on First Monday in January 1958, Total Delinquent Tax and Penalty, REMARKS.

1st SYLVAN BELL VILLAGE OF SYLVAN NORTH SYLVAN CARTON'S SYLVAN

Assessment Roll and Tax List of Real Property in the Town of Sylvan, of Sylvan

Indicate Type of Property: R-Residential, C-Commercial, I-Industrial, U-Utility, F-Farm, L-Lakeshore, T-Timber, M-Mineral

Form SCD (56) MILLER-BAYNE COMPANY, MINNEAPOLIS

Table with columns: IN WHOSE NAME ASSESSED, TO WHOM TRANSFERRED, DESCRIPTION OF PROPERTY, TRUE AND FULL VALUATIONS, ASSESSED VALUATIONS, FINAL EQUALIZED VALUE.

Cass County, Minnesota, for Taxes for the Year 1956.

Table with columns: VALUATIONS BY SCHOOL DISTRICTS AS EQUALIZED BY DEPARTMENT OF TAXATION, Tax including State Homestead, State Tax on Non-Homestead, SPECIAL TAXES, TOTAL TAXES, PAID, WHEN PAID, Number of Receipt, March Settlement 1957, June Settlement 1957, November Settlement 1957, Collections to First Monday in January 1958, Delinquent on First Monday in January 1958, Total Delinquent Tax and Penalty, REMARKS.

132-29, 133-30

1st SYLVAN SH. VILLAGE OF SYLVAN, NORTH SYLVAN, CARLTON'S SYLVAN

Assessment Roll and Tax List of Real Property in the Town of Sylvan of Sylvania

* Indicate Type of Property: R-Residential, C-Commercial, I-Industrial, U-Utility, F-Farm, L-Lakeshore, T-Timber, M-Mineral

IN WHOSE NAME ASSESSED	TO WHOM TRANSFERRED	SUBDIVISION	Sec. or Lot	Town or Block	Rng.	Number of Acres of Land	No. School District	Indicate Homestead Yes or No	Indicate Agricultural Use Yes or No	Indicate Type of Property	TRUE AND FULL VALUATIONS				ASSESSED VALUATIONS					Total Assessed Value as Equalized by the Board of Review	FINAL EQUALIZED VALUE	
											LAND Structures and Improvements	BUILDINGS and Other Structures	MACHINERY Permanently Attached to Real Estate	TOTAL True and Full Value	RURAL		ALL OTHER					TOTAL ASSESSED VALUE
															Homestead Up to \$4,000 20%	Over \$4,000 and Non-Homestead 33 1/3%	Timber Land Class 3c 20%	Homestead Up to \$4,000 25%	Over \$4,000 and Non-Homestead 40%			
Arno & Clara L. Rosler		NE 1/4 of NE 1/4	7	133	30	40			F		350						350	70		70		
"	"	NW 1/4 of NE 1/4				40			F		240	300					540	108		108		
O. A. & Erna Bernth		SW 1/4 of NE 1/4				40			F		180			60			180	60		60		
"	"	SE 1/4 of NE 1/4				40			F		180			60			180	60		60		
Velva & Florie Mann		NE 1/4 of NW 1/4				40			F		350	100					450	90		90		
"	"	E 24 1/2 acs of Lot 1 NW 1/4 of NW 1/4				24 1/2			F		90						90	18		18		
"	"	SW 1/4 of NW 1/4 Lot 2				44 96			F		170						170	34		34		
"	"	SE 1/4 of NW 1/4				40			F		260						260	52		52		
Ernest & Ethel Whipple		SW 1/4 of NE 1/4				40			F		160	125		95			285	95		95		
Loyle Broady		SW 1/4 of NE 1/4				20			F		160						160					
Amie Bernth		NE 1/4 of SW 1/4				40			F		150			50			150	50		50		
"	"	NW 1/4 of SW 1/4 Lot 3				45 21			F		159			53			159	53		53		
"	"	SW 1/4 of SW 1/4 Lot 4				45 47			F		141			47			141	47		47		
"	"	SE 1/4 of SW 1/4				40			F		290	376		222			666	222		222		
Wesley & Emma Beck		NE 1/4 of SE 1/4				40			F		220			44			220	44		44		
"	"	NW 1/4 of SE 1/4				40			F		135			27			135	27		27		
"	"	SW 1/4 of SE 1/4				40			F		240	550		168			840	168		168		
Michael St. Wright		SW 1/4 of SE 1/4				20			F		165	100		53			265	53		53		
Daniel A. Phillips		E 1/2 of SW 1/4 of SE 1/4				20			F		155	50		41			205	41		41		
						660 36					3865	1401		5286	705	589		1292				

Cass County, Minnesota, for Taxes for the Year 1956.

SOLD FOR TAXES	VALUATIONS BY SCHOOL DISTRICTS AS EQUALIZED BY DEPARTMENT OF TAXATION						Tax Including State Homestead	State Tax on Non-Homestead	SPECIAL TAXES	TOTAL TAXES	PAID	WHEN PAID	Number of Receipt	March Settlement 1957	June Settlement 1957	Penalty	November Settlement 1957	Penalty	Collections to First Monday in January 1958	Penalty	Delinquent on First Monday in January 1958	Total Delinquent Tax and Penalty	REMARKS	
	District No.	District No.	District No.	District No.	District No.	District No.																		
	Rate	Rate	Rate	Rate	Rate	Rate																		
1	H	70					1484		1484	1	PAID IN FULL	MAY 31 1957	9100											
2	H	108					2290		2290	2	PAID IN FULL	MAY 31 1957	9100											
3	H	60					1272	32	1304	3	1st Half Paid	MAY 31 1957	16640											
4	H	60					1272	32	1304	4	2nd Half Paid	OCT 31 1957	9089											
5										5														
6	H	90					1908		1908	6	PAID IN FULL	AUG 27 1957												
7	H	18					382		382	7	PAID IN FULL	AUG 27 1957	14203				41 1/2		104					
8	H	34					720		720	8	PAID IN FULL	AUG 27 1957												
9	H	52					1102		1102	9	PAID IN FULL	AUG 27 1957												
10	H	95					2014	50	2064	10	1st Half Paid	OCT 31 1957	16503											
11	H	50					1060	26	1086	11	2nd Half Paid	MAY 31 1957												
12	H	53					1124	28	1152	12	1st Half Paid	OCT 31 1957	16864											
13	H	47					996	26	1022	13	2nd Half Paid	MAY 31 1957	9264											
14	H	222					4706	118	4824	14	1st Half Paid	OCT 31 1957												
15										15														
16	H	44					932		932	16	PAID IN FULL	MAY 31 1957												
17	H	27					572		572	17	PAID IN FULL	MAY 31 1957	10255											
18	H	168					3560		3660	18	PAID IN FULL	MAY 31 1957												
19	H	53					1124		1124	19	PAID IN FULL	MAY 16 1957	6429											
20	H	41					868		868	20	PAID IN FULL	MAY 31 1957	9156											
	H	705					27386	312	27698															

132-29 133-29 133-30 Add'l to Sylvan Be... SYLVAN SHA VILLAGE OF SYLVAN NORTH SYLVAN CARLTON'S SYLVAN

Assessment Roll and Tax List of Real Property in the Town of Sylvia of Sylvania

* Indicate Type of Property: R-Residential, C-Commercial, I-Industrial, U-Utility, F-Farm, L-Lakeshore, T-Timber, M-Mineral

Form SC (56) HILLS-DAY COMPANY, MINNEAPOLIS

Cass County, Minnesota, for Taxes for the Year 1956.

133-29

133-30

IN WHOSE NAME ASSESSED	TO WHOM TRANSFERRED	DESCRIPTION OF PROPERTY			No. School District	Indicate Homestead Yes or No	Indicate Agricultural Yes or No	* Indicate Type of Property	TRUE AND FULL VALUATIONS					ASSESSED VALUATIONS					FINAL EQUALIZED VALUE
		Subdivision	Sec. or Lot	Town or Block					Ang.	Number of Acres of Land	LAND Exclusive of Structures and Improvements	BUILDINGS and Other Structures	MACHINERY Permanently Attached to Real Estate	TOTAL True and Full Value	RURAL Homestead Up to \$4,000 20%	Over \$4,000 and Non-Homestead 33 1/3%	Timber Land Class 3c 20%	ALL OTHER Homestead Up to \$4,000 25%	
									Dollars	Dollars	Dollars	Dollars	Dollars	Dollars	Dollars	Dollars	Dollars	Dollars	
Ralph W. & Bernice Agnes Cook		NE 1/4 of NE 1/4	8	133	30	40		F	225	200		425	85			85			
Arnich Berndt		NW 1/4 of NE 1/4				40		"	120			120	40			40			
"	"	SW 1/4 of NE 1/4				40		"	120			120	40			40			
Mrs. G. Gerrelle		SE 1/4 of NE 1/4				40		"	80			80	16			16			
						40		"											
Gilbert & Myrtle Tessmer		NE 1/4 of NW 1/4				40		"	225	575		800	160			160			
"	"	NW 1/4 of NW 1/4				40		"	240			240	48			48			
"	"	SW 1/4 of NW 1/4				40		"	210			210	42			42			
"	"	SE 1/4 of NW 1/4				40		"	160			160	32			32			
O. W. & Erna Berndt		NE 1/4 of SW 1/4				40		"	250			250	50			50			
"	"	NW 1/4 of SW 1/4				40		"	120			120	24			24			
"	"	SW 1/4 of SW 1/4				40		"	295			295	59			59			
"	"	SE 1/4 of SW 1/4				40		"	185			185	37			37			
Mrs. G. Gerrelle		NE 1/4 of SE 1/4				40		"	250			250	50			50			
"	"	NW 1/4 of SE 1/4				40		"	320			320	64			64			
"	"	SW 1/4 of SE 1/4				40		"	410	450		860	172			172			
"	"	SE 1/4 of SE 1/4				40		"	105			105	21			21			
						640			3315	1225		4540	860	80		940			

SOLD FOR TAXES	VALUATIONS BY SCHOOL DISTRICTS AS EQUALIZED BY DEPARTMENT OF TAXATION						Tax including State Homestead	State Tax on Non-Homestead	SPECIAL TAXES	TOTAL TAXES	PAID	WHEN PAID	Number of Receipt	March Settlement 1957	June Settlement 1957	Penalty	November Settlement 1957	Penalty	Collections to First Monday in January 1958	Penalty	Delinquent on First Monday in January 1958	Total Delinquent Tax and Penalty	REMARKS
	District No.	District No.	District No.	District No.	District No.	District No.																	
	Rate	Rate	Rate	Rate	Rate	Rate																	
	District No.	District No.	District No.	District No.	District No.	District No.				\$ cts.	\$ cts.	\$ cts.	\$ cts.	\$ cts.	\$ cts.	\$ cts.	\$ cts.	\$ cts.	\$ cts.	\$ cts.	\$ cts.	\$ cts.	\$ cts.
1	H	85					1802		1802		1802	16636											
2		40					848	22	870		870	16864											
3		40					848	22	870		870	9164											
4	H	16					340		340		340	1611											
6	H	160					3392		3392		3392	6233											
7	H	48					1018		1018		1018	9101											
8	H	42					890		890		890												
9	H	32					678		678		678												
11	H	50					1060		1060		1060	16675											
12	H	24					508		508		508	9102											
13	H	59					1250		1250		1250												
14	H	37					784		784		784												
16	H	50					1060		1060		1060												
17	H	64					1356		1356		1356	16111											
18	H	172					3646		3646		3646	8881											
19	H	21					446		446		446												
	H	860					19926	44	19970		19970												

Land & A. L. L. S. 1st SYLVIA BE VILLAGE OF SYLVIA NORTH SYLVIA CARLTON'S SYLVIA

Assessment Roll and Tax List of Real Property in the Town of Lyman, Cass County, Minnesota, for Taxes for the Year 1956.

Form 50 (56) JULY-1955 COMPANY, MINNEAPOLIS

* Indicate Type of Property: R-Residential, C-Commercial, I-Industrial, U-Utility, F-Farm, L-Lakeshore, T-Timber, M-Mineral

Main table with columns: IN WHOSE NAME ASSESSED, TO WHOM TRANSFERRED, DESCRIPTION OF PROPERTY, TRUE AND FULL VALUATIONS, ASSESSED VALUATIONS, VALUATIONS BY SCHOOL DISTRICTS AS EQUALIZED BY DEPARTMENT OF TAXATION, TAXES, PAID, WHEN PAID, Number of Receipt, March Settlement 1957, June Settlement 1957, November Settlement 1957, Penalty, Collections to First Monday in January 1958, Delinquent on First Monday in January 1958, Total Delinquent Tax and Penalty, REMARKS.

133-29 133-30

133-29 133-30 NORTH SYLVAN CALYON'S SYLVAN VILLAGE OF SYLVAN

Assessment Roll and Tax List of Real Property in the Town of Sylva of Dallas County, Minnesota

Cass County, Minnesota, for Taxes for the Year 1956.

IN WHOSE NAME ASSESSED	TO WHOM TRANSFERRED	DESCRIPTION OF PROPERTY				TRUE AND FULL VALUATIONS										ASSESSED VALUATIONS										VALUATIONS BY SCHOOL DISTRICTS AS EQUALIZED BY DEPARTMENT OF TAXATION						SOLD FOR TAXES	Tax including State Homestead	State Tax on Non-Homestead	SPECIAL TAXES	TOTAL TAXES	PAID	WHEN PAID	Number of Receipt	March Settlement 1957	June Settlement 1957	Penalty	November Settlement 1957	Penalty	Collections to First Monday in January 1958	Penalty	Delinquent on First Monday in January 1958	Total Delinquent Tax and Penalty	REMARKS					
		SUBDIVISION	Sec. of Lot	Town or Block	Rng.	Number of Acres of Land	INDICATE HOMESTEAD OR NON-HOMESTEAD	INDICATE APPLICABLE TAX OR NO	INDICATE TYPE OF PROPERTY	LAND Exclusive of Structures and Improvements	BUILDINGS and Other Structures	MACHINERY Permanently Attached to Real Estate	TOTAL True and Full Value	RURAL			ALL OTHER			MACHINERY Permanently Attached to Real Estate	TOTAL ASSESSED VALUE	Total Assessed Value as Equalized by the Board of Review	FINAL EQUALIZED VALUE	District		District		District		District																								
														Acres	100ths	20%	33 1/3%	Timber Land Class 3e 20%	25%					40%	33 1/3%	No.	Rate.....	No.	Rate.....	No.	Rate.....																			No.	Rate.....	No.	Rate.....	
																																																						Dollars
														Dollars	Dollars	Dollars	Dollars	Dollars	Dollars					Dollars	Dollars	Dollars	Dollars	Dollars	Dollars	Dollars	Dollars																			Dollars	Dollars	Dollars	Dollars	Dollars
D. H. Berglund	State of Minnesota	1	NE 1/4 of NE 1/4	10 133 30	40							240						80			80		1	SOLD FOR TAXES				80	16 96	42	17 38								17 38															
	State of Minnesota	2	NW 1/4 of NE 1/4																				2																															
	State of Minnesota	3	SW 1/4 of NE 1/4																				3																															
	State of Minnesota	4	SE 1/4 of NE 1/4																				4																															
		5																					5																															
Leshie & Rose Licty	State of Minnesota	6	NE 1/4 of NW 1/4		40			120				120	24					24			24		6	H 24				508		508		508											2nd Half Paid SEP 16 1957											
	State of Minnesota	7	NW 1/4 of NW 1/4		40			230				230	46					46			46		7	H 46				974		974		974												1st Half Paid MAY 31 1957	144 78		7 41							
	State of Minnesota	8	SW 1/4 of NW 1/4																				8																															
	State of Minnesota	9	SE 1/4 of NW 1/4																				9																															
		10																					10																															
Ernest J. & Ophelia Stark		11	NE 1/4 of SW 1/4		40			160	975			935	187					187			187		11	H 187			3964		3964		3964														2nd Half Paid OCT 31 1957									
" " "		12	NW 1/4 of SW 1/4		40			150				150	30					30			30		12	H 30			636		636		636																1st Half Paid MAY 31 1957							
" " "		13	SW 1/4 of SW 1/4		40			240				240	48					48			48		13	H 48			1018		1018		1018																							
" " "		14	SE 1/4 of SW 1/4		40			370				370	74					74			74		14	H 74			1568		1568		1568																							
		15																					15																															
Arn. Roy Fisher		16	NE 1/4 of SE 1/4		40			120				120	40					40			40		16	SOLD FOR TAXES			848	22	870		870																							
Ernest J. & Ophelia M. Stark		17	NW 1/4 of SE 1/4		40			120				120	24					24			24		17	H 24			508		508		508																							
" " "		18	SW 1/4 of SE 1/4		40			120				120	24					24			24		18	H 24			508		508		508																							
Arn. Roy Fisher		19	SE 1/4 of SE 1/4		40			155	875			630	210					210			210		19	ADJUTANT			4450	112	4562		4562																							
		20																					20																															
					440			2125	1150			3275	457	330				787			787						H 457 330 787																											

Hand to Alvin S. 1st SYLVAN SH. VILLAGE OF SYLVAN N. NORTH SYLVAN CARLSON'S SYLVAN

Assessment Roll and Tax List of Real Property in the Town of *Deer Creek*, of *Dakota*

* Indicate Type of Property: R-Residential, C-Commercial, I-Industrial, U-Utility, F-Farm, L-Lakeshore, T-Timber, M-Mineral

Form 50 (56) - MILLER-DAY COMPANY, MINNEAPOLIS

Table with columns: IN WHOSE NAME ASSESSED, TO WHOM TRANSFERRED, DESCRIPTION OF PROPERTY, TRUE AND FULL VALUATIONS, ASSESSED VALUATIONS (RURAL, ALL OTHER, MACHINERY, TOTAL ASSESSED VALUE), FINAL EQUALIZED VALUE.

Cass County, Minnesota, for Taxes for the Year 1956.

Table with columns: VALUATIONS BY SCHOOL DISTRICTS AS EQUALIZED BY DEPARTMENT OF TAXATION (District No., Rate, etc.), TAXES (SOLD FOR TAXES, SPECIAL TAXES, TOTAL TAXES), PAID, WHEN PAID, Number of Receipt, March Settlement, June Settlement, November Settlement, Collections to First Monday in January 1958, Delinquent on First Monday in January 1958, Total Delinquent Tax and Penalty, REMARKS.

133-29 132-29 133-30

1st SYLVAN SH... VILLAGE OF SYLVAN... NORTH SYLVAN... CARLTON'S SYLVAN...

Assessment Roll and Tax List of Real Property in the Town of Sylva, Cass County, Minnesota, for Taxes for the Year 1956.

Cass County, Minnesota, for Taxes for the Year 1956.

Form 5C (56) JULY 28, 1955

Indicate Type of Property: R-Residential, C-Commercial, I-Industrial, U-Utility, F-Farm, L-Lakeshore, T-Timber, M-Mineral

Table with columns: IN WHOSE NAME ASSESSED, TO WHOM TRANSFERRED, DESCRIPTION OF PROPERTY, TRUE AND FULL VALUATIONS, ASSESSED VALUATIONS, VALUATIONS BY SCHOOL DISTRICTS AS EQUALIZED BY DEPARTMENT OF TAXATION, TAXES, PAID, WHEN PAID, Number of Receipt, March Settlement 1957, June Settlement 1957, November Settlement 1957, Collections to First Monday in January 1958, Delinquent on First Monday in January 1958, Total Delinquent Tax and Penalty, REMARKS.

133-29

133-30

1st SYLVAN BE... SYLVAN SH... VILLAGE OF SYLV... NORTH SYLVAN CARLSON'S SY...

Assessment Roll and Tax List of Real Property in the Town of Sylvan, Cass County, Minnesota

* Indicate Type of Property: R-Residential, C-Commercial, I-Industrial, U-Utility, F-Farm, L-Lakeshore, T-Timber, M-Mineral

Form 503 (56) WILCOX-BRYAN COMPANY, MINNEAPOLIS

Table with columns: IN WHOSE NAME ASSESSED, TO WHOM TRANSFERRED, DESCRIPTION OF PROPERTY, TRUE AND FULL VALUATIONS, ASSESSED VALUATIONS, and FINAL EQUALIZED VALUE. Includes handwritten entries for property owners like Mike & Frances L. Ondris and Mrs. Annie L. Silver.

Cass County, Minnesota, for Taxes for the Year 1956.

Table with columns: VALUATIONS BY SCHOOL DISTRICTS AS EQUALIZED BY DEPARTMENT OF TAXATION, Tax including State Homestead, State Tax on Non-Homestead, SPECIAL TAXES, TOTAL TAXES, PAID, WHEN PAID, Number of Receipt, March Settlement 1957, June Settlement 1957, Penalty, November Settlement 1957, Penalty, Collections to First Monday in January 1958, Penalty, Delinquent on First Monday in January 1958, Total Delinquent Tax and Penalty, and REMARKS. Includes handwritten entries for property owners and tax amounts.

132-29

133-30

Hand & Allen's 1st SYLVAN SHS VILLAGE OF SYLVAN, NORTH SYLVAN CARLTON'S SYLVAN

Assessment Roll and Tax List of Real Property in the Town of Sylvania, of Sylvania County, Minnesota

* Indicate Type of Property: R-Residential, C-Commercial, I-Industrial, U-Utility, F-Farm, L-Lakeshore, T-Timber, M-Mineral

Table with columns: IN WHOSE NAME ASSESSED, TO WHOM TRANSFERRED, DESCRIPTION OF PROPERTY, TRUE AND FULL VALUATIONS, ASSESSED VALUATIONS, FINAL EQUALIZED VALUE. Includes handwritten entries for John L. Parks, Ida Anderson, James & Johanna Fornshell, Carl H. Slieter, and Clarence H. Slieter.

Cass County, Minnesota, for Taxes for the Year 1956.

Table with columns: VALUATIONS BY SCHOOL DISTRICTS AS EQUALIZED BY DEPARTMENT OF TAXATION, Tax including State Homestead, State Tax on Non-Homestead, SPECIAL TAXES, TOTAL TAXES, PAID, WHEN PAID, Number of Receipt, March Settlement, June Settlement, November Settlement, Collections to First Monday in January 1958, Delinquent on First Monday in January 1958, Total Delinquent Tax and Penalty, REMARKS. Includes handwritten payment details and dates.

133-29 133-30

1st & Allen's 1st SYLVAN BE... SYLVAN STA... VILLAGE OF SYLVAN... NORTH SYLVAN... CARLSON'S STA...

Assessment Roll and Tax List of Real Property in the Town of Sylvan, of Lyman, Minnesota

Cass County, Minnesota, for Taxes for the Year 1956.

* Indicate Type of Property: R-Residential, C-Commercial, I-Industrial, U-Utility, F-Farm, L-Lakeshore, T-Timber, M-Mineral

Form 5CD (56) WILCO-DAVIS COMPANY, MINNEAPOLIS

Main table with columns: IN WHOSE NAME ASSESSED, TO WHOM TRANSFERRED, DESCRIPTION OF PROPERTY, TRUE AND FULL VALUATIONS, ASSESSED VALUATIONS, VALUATIONS BY SCHOOL DISTRICTS AS EQUALIZED BY DEPARTMENT OF TAXATION, Tax Including State Homestead, State Tax on Non-Homestead, SPECIAL TAXES, TOTAL TAXES, PAID, WHEN PAID, Number of Receipt, March Settlement 1957, June Settlement 1957, Penalty, November Settlement 1957, Penalty, Collections to First Monday in January 1958, Delinquent on First Monday in January 1958, Total Delinquent Tax and Penalty, REMARKS.

133-29
133-30

Land & A. L. Sivan's 1st Add'n to Sylvan Be... SYLVAN SHA... VILLAGE OF SYLVAN... NORTH SYLVAN CARLSON'S SYV...

Assessment Roll and Tax List of Real Property in the *Down* of *Sylvan*

* Indicate Type of Property: R-Residential, C-Commercial, I-Industrial, U-Utility, F-Farm, L-Lakeshore, T-Timber, M-Mineral

Form 501 (1-56) WILLIS-TOWERS COMPANY, CHICAGO, ILL.

IN WHOSE NAME ASSESSED	TO WHOM TRANSFERRED	DESCRIPTION OF PROPERTY				TRUE AND FULL VALUATIONS											FINAL EQUALIZED VALUE							
		SUBDIVISION	Sec. of Lot	Town or Block	No. of Acres of Land	No. School District	Indicate Homestead Yes or No	Indicate Agricultural Use Yes or No	Indicate Type of Property	LAND EXCLUSIVE OF STRUCTURES AND IMPROVEMENTS			BUILDINGS AND OTHER STRUCTURES		MACHINERY Permanently Attached to Real Estate	TOTAL True and Full Value		ASSESSED VALUATIONS				TOTAL ASSESSED VALUE	Total Assessed Value as Equalized by the Board of Review	
										RURAL	ALL OTHER	MACHINERY Permanently Attached to Real Estate	TOTAL ASSESSED VALUE	Total Assessed Value as Equalized by the Board of Review		RURAL		ALL OTHER						
																Homestead Up to \$4,000 20%		Over \$4,000 and Non-Homestead 33 1/3%	Timber Land Class 3e 20%	Homestead Up to \$4,000 25%	Over \$4,000 and Non-Homestead 40%			MACHINERY Permanently Attached to Real Estate 33 1/3%
<i>John St. Lee</i>		1			40											240	48					48		
"		2			40											120	24					24		
<i>Marie W. Thompson</i>		3			40			R		280	250					530	106					106		
"		4			35 2/4					280						280	56					56		
<i>John St. Lee</i>		6			40			F		120						120	24					24		
"		7			40					120						120	24					24		
"		8			40					205	1050					1255	251					251		
"		9			40					190						190	38					38		
<i>John Wellington Lee</i>		11			33 7/6					80						80	16					16		
		12																						
		13																						
<i>Otto & Eleanor Litrowski</i>	<i>Lot 1, less 2 1/4 acs flowage rights to Minn. Power & Light Co.</i>	14			30			R		219						219	73					73		
<i>Minnesota Power & Light Co.</i>	<i>5.5 acs of Lot 1 & 2</i>	15			5			T		48						48	16					16		
<i>P.O. Berglund</i>	<i>Lot 3, less 1/2 ac flowage rights to Minn. Power & Light Co.</i>	16			12 3/3			T		72						72	24					24		
		17																						
		18																						
		19																						
<i>Minnesota Power & Light Co.</i>	<i>2.5 acs of Lot 3</i>	20			25			T		24						24	8					8		
					398 3/8					1998	1300					3298	587					768		

Cass County, Minnesota, for Taxes for the Year 1956.

SOLD FOR TAXES	VALUATIONS BY SCHOOL DISTRICTS AS EQUALIZED BY DEPARTMENT OF TAXATION						Tax Including State Homestead	State Tax on Non-Homestead	SPECIAL TAXES	TOTAL TAXES	PAID	WHEN PAID	Number of Receipt	March Settlement 1957	June Settlement 1957	Penalty	November Settlement 1957	Penalty	Collections to First Monday in January 1958	Penalty	Delinquent on First Monday in January 1958	Total Delinquent Tax and Penalty	REMARKS
	District No.	District No.	District No.	District No.	District No.	District No.																	
	Rate	Rate	Rate	Rate	Rate	Rate																	
	Mills	Mills	Mills	Mills	Mills	Mills																	
1	H	48					1018		1018	1	Balance Paid OCT 23 1957												
2	H	24					508		508	2	Part Paid MAY 31 1957												
3				H	106		2512		2512	3	PAID IN FULL MAY 31 1957												
4				H	56		1326		1326	4	PAID IN FULL MAY 31 1957												
6	H	24					508		508	6	Balance Paid OCT 23 1957												
7	H	24					508		508	7	Part Paid MAY 31 1957												
8	H	251					5320		5320	8	Balance Paid OCT 23 1957												
9	H	38					806		806	9	Part Paid MAY 31 1957												
11	H	16					340		340	11	Balance Paid OCT 23 1957												
14	SOLD FOR TAXES						1548	38	1586	14	PAID IN FULL MAY 24 1957												
15							380	28	408	15	2nd Half Paid OCT 31 1957												
16							508	12	520	16	1st Half Paid MAY 31 1957												
20	H	425	H	162 = 587 #2			11064	62	11534	20	2nd Half Paid OCT 31 1957												
		97		24 = 121 #2			4408				1st Half Paid MAY 31 1957												
		522		186 = 708			15472																

Land & Allen's 1st SYLVAN BE VILLAGE OF SYLVAN NORTH SYLVAN CARLTON'S SYLVAN

Assessment Roll and Tax List of Real Property in the *Town of Sylva* of *Dyke* County, Minnesota

* Indicate Type of Property: R-Residential, C-Commercial, I-Industrial, U-Utility, F-Farm, L-Lakeshore, T-Timber, M-Mineral

IN WHOSE NAME ASSESSED	TO WHOM TRANSFERRED	DESCRIPTION OF PROPERTY				TRUE AND FULL VALUATIONS														FINAL EQUALIZED VALUE
		SUBDIVISION	Sec. or Lot	Town or Block	Number of Acres of Land	LAND EXCLUSIVE OF STRUCTURES AND IMPROVEMENTS		BUILDINGS AND OTHER STRUCTURES		MACHINERY Permanently Attached to Real Estate		RURAL			ALL OTHER			TOTAL ASSESSED VALUE	Total Assessed Value as Equalized by the Board of Review	
						Dollars	Dollars	Dollars	Dollars	Dollars	Dollars	Homestead		Dollars	Dollars	Dollars				
												Up to \$1,000	Over \$1,000							
<i>George F. & Margret M. Lerrel</i>		<i>NE 1/4 of NE 1/4</i>	<i>17</i>	<i>33 30</i>	<i>40</i>			<i>200</i>								<i>40</i>				
<i>Amich Berneth</i>		<i>NW 1/4 of NE 1/4</i>			<i>40</i>			<i>20</i>	<i>675</i>							<i>199</i>				
" "		<i>SW 1/4 of NE 1/4</i>		<i>less 600</i>	<i>40</i>			<i>210</i>							<i>42</i>					
" "		<i>SE 1/4 of NE 1/4</i>																		
<i>Edward J. Dorsey</i>		<i>NE 1/4 of NW 1/4</i>			<i>40</i>		<i>no</i>	<i>297</i>							<i>99</i>					
<i>Edw. J. & Agnes D. Dorsey</i>		<i>NW 1/4 of NW 1/4</i>		<i>less 1 ac</i>	<i>39</i>		<i>" "</i>	<i>90</i>							<i>30</i>					
" "		<i>SW 1/4 of NW 1/4</i>			<i>40</i>		<i>" "</i>	<i>144</i>							<i>48</i>					
<i>Edward J. Dorsey</i>		<i>SE 1/4 of NW 1/4</i>			<i>40</i>		<i>" "</i>	<i>444</i>	<i>780</i>						<i>408</i>					
<i>Charles & Betty Farnschell</i>		<i>1 ac. of NW 1/4 of SW 1/4</i>			<i>1</i>		<i>yes</i>	<i>50</i>	<i>440</i>						<i>98</i>					
<i>Edw. J. & Agnes D. Dorsey</i>		<i>NE 1/4 of SW 1/4</i>			<i>40</i>		<i>no</i>	<i>180</i>							<i>60</i>					
" "		<i>NW 1/4 of SW 1/4</i>			<i>40</i>		<i>" "</i>	<i>204</i>							<i>68</i>					
<i>Andrew W. & Ethel Hagg</i>		<i>SW 1/4 of SW 1/4</i>		<i>less by R. Ry.</i>	<i>28 44</i>		<i>" "</i>	<i>171</i>							<i>57</i>					
" "		<i>SE 1/4 of SW 1/4</i>		<i>less by " "</i>	<i>28 42</i>		<i>" "</i>	<i>273</i>							<i>91</i>					
<i>William & Ethel M. Lerrel</i>		<i>1 1/2' of E 1/2 of NW 1/4 of SE 1/4</i>			<i>60</i>		<i>yes</i>	<i>15</i>	<i>680</i>						<i>139</i>					
" "		<i>NE 1/4 of SE 1/4</i>																		
<i>George F. Lerrel</i>		<i>NW 1/4 of SE 1/4</i>			<i>40</i>		<i>yes</i>	<i>270</i>							<i>54</i>					
<i>Andrew W. & Ethel Hagg</i>		<i>SW 1/4 of SE 1/4</i>		<i>less 1/2 ac. of R. Ry. & less E 1/2 of NW 1/4 of SE 1/4</i>	<i>25 95</i>		<i>no</i>	<i>190</i>	<i>119</i>						<i>103</i>					
" "		<i>SE 1/4 of SE 1/4</i>																		
<i>Lloyd & Lona Johnson</i>		<i>1 ac. that part of E 1/4 of NW 1/4 of SW 1/4 of R. Ry.</i>			<i>1</i>		<i>no</i>	<i>15</i>							<i>5</i>					
					<i>484 41</i>			<i>3073</i>	<i>2194</i>						<i>5767</i>					
								<i>542</i>	<i>969</i>						<i>1541</i>					

Cass County, Minnesota, for Taxes for the Year 1956.

SOLD FOR TAXES	District No.	Rate	VALUATIONS BY SCHOOL DISTRICTS AS EQUALIZED BY DEPARTMENT OF TAXATION						Tax including State Homestead	State Tax on Non-Homestead	SPECIAL TAXES	TOTAL TAXES	PAID	WHEN PAID	Number of Receipt	March Settlement 1957	June Settlement 1957	Penalty	November Settlement 1957	Penalty	Collections to First Monday in January 1958	Penalty	Delinquent on First Monday in January 1958	Total Delinquent Tax and Penalty	REMARKS	
			District No.		District No.		District No.																			
			Rate		Rate		Rate																			
			Mills		Mills		Mills																			
	<i>H</i>	<i>40</i>							<i>8 48</i>		<i>8 48</i>	<i>1</i>	<i>2nd Half Paid OCT 31 1957</i>	<i>1612</i>												
	<i>H</i>	<i>199</i>							<i>42 18</i>		<i>42 18</i>	<i>2</i>	<i>1st Half Paid MAY 31 1957</i>	<i>9161</i>		<i>- 4 24</i>										
	<i>H</i>	<i>42</i>							<i>8 90</i>		<i>8 90</i>	<i>3</i>	<i>2nd Half Paid OCT 31 1957</i>	<i>16675</i>												
	<i>H</i>	<i>99</i>							<i>20 98</i>	<i>52</i>	<i>21 50</i>	<i>6</i>	<i>1st Half Paid MAY 31 1957</i>			<i>- 10 75</i>										
		<i>30</i>							<i>6 36</i>	<i>16</i>	<i>6 52</i>	<i>7</i>	<i>2nd Half Paid JUL 2 5 1957</i>													
		<i>48</i>							<i>10 18</i>	<i>26</i>	<i>10 44</i>	<i>8</i>	<i>1st Half Paid MAY 31 1957</i>	<i>13165</i>		<i>- 3 26</i>										
		<i>408</i>							<i>86 48</i>	<i>218</i>	<i>88 66</i>	<i>9</i>	<i>2nd Half Paid JUL 2 5 1957</i>	<i>16135</i>												
<i>10</i>	<i>SOLD FOR TAXES</i>		<i>H</i>	<i>98</i>					<i>23 22</i>		<i>23 22</i>	<i>10</i>														
		<i>60</i>							<i>12 72</i>	<i>32</i>	<i>13 04</i>	<i>11</i>	<i>2nd Half Paid JUL 2 5 1957</i>			<i>- 6 52</i>										
		<i>68</i>							<i>14 42</i>	<i>36</i>	<i>14 78</i>	<i>12</i>	<i>1st Half Paid JUL 2 5 1957</i>	<i>10735</i>												
		<i>57</i>							<i>12 08</i>	<i>30</i>	<i>12 38</i>	<i>13</i>	<i>2nd Half Paid OCT 31 1957</i>													
		<i>91</i>							<i>19 28</i>	<i>48</i>	<i>19 76</i>	<i>14</i>	<i>1st Half Paid MAY 31 1957</i>	<i>10252</i>		<i>- 6 19</i>										
			<i>H</i>	<i>139</i>					<i>32 94</i>		<i>32 94</i>	<i>15</i>	<i>2nd Half Paid OCT 31 1957</i>	<i>16871</i>		<i>- 9 88</i>										
												<i>16</i>	<i>PAID IN FULL APR 25 1957</i>	<i>5675</i>		<i>- 32 94</i>										
			<i>H</i>	<i>54</i>					<i>11 44</i>		<i>11 44</i>	<i>17</i>	<i>2nd Half Paid OCT 31 1957</i>	<i>16112</i>												
		<i>103</i>							<i>21 84</i>	<i>56</i>	<i>22 40</i>	<i>18</i>	<i>1st Half Paid MAY 31 1957</i>	<i>9161</i>		<i>- 5 72</i>										
												<i>19</i>	<i>2nd Half Paid OCT 31 1957</i>	<i>16871</i>												
												<i>20</i>	<i>1st Half Paid MAY 31 1957</i>	<i>10252</i>		<i>- 1 20</i>										
<i>20</i>	<i>HOLD FOR TAXES</i>			<i>5</i>					<i>1 18</i>	<i>02</i>	<i>1 20</i>	<i>20</i>														
		<i>335</i>							<i>275 34</i>	<i>516</i>	<i>326 84</i>															
		<i>964</i>							<i>57 34</i>																	
		<i>1299</i>							<i>242 1541</i>		<i>332 68</i>															

133-29 132-29 133-30

LAND & ALEX'S 1ST SYLVAN BE... SYLVAN SIM... VILLAGE OF SYLVAN... NORTH SYLVAN CARLYON'S SY...

Assessment Roll and Tax List of Real Property in the Town of Sylvan

Indicate Type of Property: R-Residential, C-Commercial, I-Industrial, U-Utility, F-Farm, L-Lakeshore, T-Timber, M-Mineral

Form 5C (56) MILLER-DAVIS COMPANY, MINNEAPOLIS

Main table with columns: IN WHOSE NAME ASSESSED, TO WHOM TRANSFERRED, SUBDIVISION, TRUE AND FULL VALUATIONS (RURAL, ALL OTHER, MACHINERY), ASSESSED VALUATIONS, FINAL EQUALIZED VALUE.

Cass County, Minnesota, for Taxes for the Year 1956.

Tax details table with columns: VALUATIONS BY SCHOOL DISTRICTS AS EQUALIZED BY DEPARTMENT OF TAXATION, TAX INCLUDING STATE HOMESTEAD, SPECIAL TAXES, TOTAL TAXES, PAID, WHEN PAID (Month Day Year), Number of Receipt, March Settlement 1957, June Settlement 1957, November Settlement 1957, Penalties, Collections to First Monday in January 1958, Delinquent on First Monday in January 1958, Total Delinquent Tax and Penalty, REMARKS.

133-29 132-29

133-30

LAND & ALIEN'S 1st SYLVAN BE... VILLAGE OF SYLVAN... NORTH SYLVAN CARLYON'S SYLVAN

Assessment Roll and Tax List of Real Property in the State of *Dakota*

Cass County, Minnesota, for Taxes for the Year 1956.

Indicate Type of Property: R-Residential, C-Commercial, I-Industrial, U-Utility, F-Farm, L-Lakeshore, T-Timber, M-Mineral

Table with columns: IN WHOSE NAME ASSESSED, TO WHOM TRANSFERRED, DESCRIPTION OF PROPERTY, TRUE AND FULL VALUATIONS, ASSESSED VALUATIONS, VALUATIONS BY SCHOOL DISTRICTS AS EQUALIZED BY DEPARTMENT OF TAXATION, TAX INCLUDING STATE HOMESTEAD, SPECIAL TAXES, TOTAL TAXES, PAID, WHEN PAID, Number of Receipt, March Settlement, June Settlement, November Settlement, Collections to First Monday, Delinquent on First Monday, Total Delinquent Tax and Penalty, REMARKS.

133-29 133-30 133-31

1st SYLVAN SH... VILLAGE OF SYL... NORTH SYLVAN... CARLSON'S SY...

Assessment Roll and Tax List of Real Property in the *Dakon* of *Sylvan*,

Cass County, Minnesota, for Taxes for the Year 1956.

* Indicate Type of Property: R-Residential, C-Commercial, I-Industrial, U-Utility, F-Farm, L-Lakeshore, T-Timber, M-Mineral

IN WHOSE NAME ASSESSED	TO WHOM TRANSFERRED	DESCRIPTION OF PROPERTY			No. School District	Indicate Homestead Yes or No	Indicate Agricultural Yes or No	Indicate Type of Property	TRUE AND FULL VALUATIONS											SOLD FOR TAXES	VALUATIONS BY SCHOOL DISTRICTS AS EQUALIZED BY DEPARTMENT OF TAXATION						PAID	WHEN PAID	Number of Receipt	March Settlement 1957	June Settlement 1957	Penalty	November Settlement 1957	Penalty	Collections to First Monday in January 1958	Penalty	Delinquent on First Monday in January 1958	Total Delinquent Tax and Penalty	REMARKS																
		Subdivision	Sec. or Lot	Town or Block					Range	Number of Acres of Land	LAND Exclusive of Structures and Improvements	BUILDINGS and Other Structures	MACHINERY Permanently Attached to Real Estate	TOTAL True and Full Value	RURAL		ALL OTHER				TOTAL ASSESSED VALUE	Total Assessed Value as Equalized by the Board of Review	FINAL EQUALIZED VALUE	District No.	District No.	District No.														District No.	District No.	Tax including State Homestead	State Tax on Non-Homestead	SPECIAL TAXES	TOTAL TAXES	Month	Day	Year	\$	cts.	\$	cts.	\$	cts.	\$
		NE 1/4 of NE 1/4	20	133	30																																																		
		NW 1/4 of NE 1/4																																																					
		SW 1/4 of NE 1/4																																																					
		SE 1/4 of NE 1/4																																																					
		NE 1/4 of NW 1/4 less 1 ac.	39			Yes	No	F		410					82																																								
Lena Cole		NW 1/4 of NW 1/4	40			"	"	"		235					47																																								
"		SW 1/4 of NW 1/4	40			No	"	"		321				107																																									
Wesley E. Peterson		SE 1/4 of NW 1/4 less 1 ac. to Homestead of less 1 ac. to adobe, less 6 60 4 less, starting 60' W. of S.E. cor.				Yes	"	"		260	425																																												
Lena Cole		S.E. corner of SE 1/4 of NW 1/4 thence N. to a point 30' S. of N. W. corner of NW 1/4, thence E. parallel with N.W. 1/4 line to a line of SE 1/4 of NW 1/4 thence S. to begin.				Yes	"	"		260	425																																												
		NW 1/4 of NW 1/4																																																					
	Minnesota Power & Light Co.	2.60 of SE 1/4 of NW 1/4	182			No	No	U		18					6																																								
	Geo. A. Albrecht	1 ac. of SE 1/4 of NW 1/4 of "Korwin" sub to survey	1			Yes	"	R		25	300				65																																								
	Harvey Houseman	2 ac. of SE 1/2 of NW 1/4	2			No	"	"		24	60				28																																								
	John W. & Margaret Serwitiger	Starting 60' W. of S.E. cor. of SE 1/4 of NW 1/4 thence S. 30' N. of Hwy. thence S.W. parallel with N.W. 1/4 line to a line of SE 1/4 of NW 1/4 thence E. to begin.	320			Yes	No	R		50	1000				210																																								

(Continued on next page) 127 02 1093 1360 2443 404 141 545

129 275 404 #2 5002
 107 34 141 #2 7322
 236 309 545 12324
 76 12400

10608 4092

6.78 - 29.78

Land of Lena's 1st Sylvan SHS Village of Sylvan NORTH SYLVAN CARLYON'S SYLVAN

Assessment Roll and Tax List of Real Property in the Town of Sylvan,

* Indicate Type of Property: R-Residential, C-Commercial, I-Industrial, U-Utility, F-Farm, L-Lakeshore, T-Timber, M-Mineral

Form 501 (56) WISCONSIN DEPARTMENT OF REVENUE

IN WHOSE NAME ASSESSED	TO WHOM TRANSFERRED	DESCRIPTION OF PROPERTY			No. School District	Indicate Homestead Yes or No	Indicate Agricultural Yes or No	Indicate Type of Property	TRUE AND FULL VALUATIONS					ASSESSED VALUATIONS					Final Equalized Value	SOLD FOR TAXES	VALUATIONS BY SCHOOL DISTRICTS AS EQUALIZED BY DEPARTMENT OF TAXATION						Tax Including State Homestead	State Tax on Non-Homestead	SPECIAL TAXES	TOTAL TAXES	PAID	WHEN PAID	Number of Receipt	March Settlement 1957	June Settlement 1957	Penalty	November Settlement 1957	Penalty	Collections to First Monday in January 1958	Penalty	Delinquent on First Monday in January 1958	Total Delinquent Tax and Penalty	REMARKS														
		Subdivision	Sec. or Lot	Town or Block					Ang.	Number of Acres of Land	LAND Exclusive of Structures and Improvements	BUILDINGS and Other Structures	MACHINERY Permanently Attached to Real Estate	TOTAL True and Full Value	RURAL Homestead Up to \$4,000 20%	Over \$4,000 and Non-Homestead 33 1/3%	Timber Land Class 3e 20%	ALL OTHER Homestead Up to \$4,000 25%			Over \$4,000 and Non-Homestead 40%	MACHINERY Permanently Attached to Real Estate 33 1/3%	TOTAL ASSESSED VALUE	Total Assessed Value as Equalized by the Board of Review	District No. Rate Mills	District No. Rate Mills																		District No. Rate Mills	District No. Rate Mills	District No. Rate Mills	District No. Rate Mills	\$ cts.	\$ cts.	\$ cts.	\$ cts.	\$ cts.	\$ cts.	\$ cts.	\$ cts.	\$ cts.	\$ cts.
Elmer & Ella M. Wedau		NE 1/4 of NE 1/4	24	133	30	8.1	No	No	F	560	450	1010	202			202	1																																								
Minnesota Power & Light Co.		SW 1/4 of NE 1/4 Lot 3				22.50	No	No	T	324		324		108		108	3																																								
"		SE 1/4 of NE 1/4				40	"	"	"	399		399		133		133	4																																								
Minnesota Power & Light Co.		NE 1/4 of NW 1/4				11	No	No	T	111		111		37		37	6																																								
Elmer & Ella M. Wedau		NW 1/4 of NW 1/4				32.65	Yes	No	F	145		145		29		29	7																																								
"		SW 1/4 of NW 1/4															8																																								
"		SE 1/4 of NW 1/4															9																																								
"		NE 1/4 of SW 1/4															10																																								
"		NW 1/4 of SW 1/4															11																																								
"		SW 1/4 of SW 1/4															12																																								
"		SE 1/4 of SW 1/4															13																																								
Minnesota Power & Light Co.		NE 1/4 of SE 1/4				40	No	No	T	399		399		133		133	16																																								
"		NW 1/4 of SE 1/4 Lot 4				24.75	"	"	"	246		246		82		82	17																																								
"		SW 1/4 of SE 1/4 Lot 5				26.25	"	"	"	261		261		87		87	18																																								
Elmer & Ella M. Wedau		E 1/2 of Lot 2				287.15				2445	450	2895	231	890		811	20																																								

Cass County, Minnesota, for Taxes for the Year 1956.

Add'l. to Sylvan Bel...
 1st SYLVAN SHA...
 2nd...
 NORTH SYLVAN...
 CARLTON'S...

Assessment Roll and Tax List of Real Property in the Town of Dywan

Cass County, Minnesota, for Taxes for the Year 1956.

Form 562 (56) - MLLS-STATE COMPANY, MINNEAPOLIS

Indicate Type of Property: R-Residential, C-Commercial, I-Industrial, U-Utility, F-Farm, L-Lakeshore, T-Timber, M-Mineral

IN WHOSE NAME ASSESSED	TO WHOM TRANSFERRED	DESCRIPTION OF PROPERTY				TRUE AND FULL VALUATIONS											FINAL EQUALIZED VALUE						
		SUBDIVISION	Sec. of Lot	Town or Block	Rng.	Number of Acres of Land	LAND EXCLUSIVE OF STRUCTURES AND IMPROVEMENTS			BUILDINGS AND OTHER STRUCTURES			MACHINERY Permanently Attached to Real Estate	TOTAL True and Full Value	ASSESSED VALUATIONS				Total Assessed Value as Equalized by the Board of Review				
							RURAL	ALL OTHER	MACHINERY	Homestead Up to \$1,000 20%	Over \$1,000 and Non-Homestead 33 1/8%	Timber Land Class 3e 20%			Homestead Up to \$1,000 25%	Over \$1,000 and Non-Homestead 40%		Permanently Attached to Real Estate 33 1/8%		DOLLARS	DOLLARS	DOLLARS	DOLLARS
						Acres																	
		NE 1/4 of NE 1/4				25.133	30																
		NW 1/4 of NE 1/4																					
		SW 1/4 of NE 1/4																					
		SE 1/4 of NE 1/4																					
Minnesota Power & Light Co.		Lak 2				325							27		9						9		
		NE 1/4 of NW 1/4																					
		NW 1/4 of NW 1/4																					
		SW 1/4 of NW 1/4																					
		SE 1/4 of NW 1/4																					
Minnesota Power & Light Co.		4ac 1/2 Sec 30				3310							363		121						121		
		NE 1/4 of SW 1/4																					
		NW 1/4 of SW 1/4																					
		SW 1/4 of SW 1/4																					
		SE 1/4 of SW 1/4																					
St. Olaf College		4ac of Lot 1				4							45		15						15		
		NE 1/4 of SE 1/4																					
		NW 1/4 of SE 1/4																					
		SW 1/4 of SE 1/4																					
		SE 1/4 of SE 1/4																					
						4035							435		145						145		

SOLD FOR TAXES	VALUATIONS BY SCHOOL DISTRICTS AS EQUALIZED BY DEPARTMENT OF TAXATION						Tax including State Homestead	State Tax on Non-Homestead	SPECIAL TAXES	TOTAL TAXES	PAID	WHEN PAID	Number of Receipt	March Settlement 1957	June Settlement 1957	Penalty	November Settlement 1957	Penalty	Collections to First Monday in January 1958	Penalty	Delinquent on First Monday in January 1958	Total Delinquent Tax and Penalty	REMARKS
	District No. 1	District No. 2	District No. 3	District No. 4	District No. 5	District No. 6																	

Land & Allen's 1st Add'n to Sylvan Bldg NORTH SYLVAN CARLYON'S SYLVAN

Assessment Roll and Tax List of Real Property in the Village of *Down* of *Sylvan*

* Indicate Type of Property: R-Residential, C-Commercial, I-Industrial, U-Utility, F-Farm, L-Lakeshore, T-Timber, M-Mineral

Form 5C (56) HILLIS-BAY COMPANY, MINNEAPOLIS

IN WHOSE NAME ASSESSED	TO WHOM TRANSFERRED	DESCRIPTION OF PROPERTY				TRUE AND FULL VALUATIONS										FINAL EQUALIZED VALUE				
		SUBDIVISION	Sec. or Lot	Town or Block	Rng.	Number of Acres of Land	LAND Exclusive of Structures and Improvements	BUILDINGS and Other Structures	MACHINERY Permanently Attached to Real Estate	TOTAL True and Full Value	RURAL			ALL OTHER			MACHINERY Permanently Attached to Real Estate	TOTAL ASSESSED VALUE	Total Assessed Value as Equalized by the Board of Review	
											Acres	100ths	Homestead Up to \$4,000 20%	Over \$4,000 and Non-Homestead 33 1/8%	Timber Land Class 3e 20%					Homestead Up to \$1,000 25%
		Village of <i>Sylvan</i>					Dollars	Dollars	Dollars	Dollars	Dollars	Dollars	Dollars	Dollars	Dollars	Dollars	Dollars	Dollars		
<i>Martin & Lena Loftis</i>			1	1			5		5	1					5					
"			2				25	240	265	53					265	53				
"			3				5		5	1					5					
"			4				5		5	1					5					
"			5				5		5	1					5					
"			6				5		5	1					5					
"			7				5		5	1					5					
"			8				5		5	1					5					
State of Minnesota			9																	
State of Minnesota			10																	
<i>Jessie Britton</i>			11				6		6	2					6	2				
"			12				6		6	2					6	2				
<i>Chas. Johnson</i>	<i>Charles M & Bella B. Luttrell</i>		13				10		10	2					10	2				
"	"		14				10		10	2					10	2				
"	"		15				10		10	2					10	2				
"	"		16				10		10	2					10	2				
"	"		17				10		10	2					10	2				
"	"		18				10		10	2					10	2				
"	"		19				10		10	2					10	2				
"	"		20				10		10	2					10	2				
							152	240	392	76	4				30					

Cass County, Minnesota, for Taxes for the Year 1956.

SOLD FOR TAXES	VALUATIONS BY SCHOOL DISTRICTS AS EQUALIZED BY DEPARTMENT OF TAXATION						Tax including State Homestead	State Tax on Non-Homestead	SPECIAL TAXES	TOTAL TAXES	PAID	WHEN PAID	Number of Receipt	March Settlement 1957	June Settlement 1957	November Settlement 1957	Penalty	Collections to First Monday in January 1958	Penalty	Delinquent on First Monday in January 1958	Total Delinquent Tax and Penalty	REMARKS
	District No.	District No.	District No.	District No.	District No.	District No.																
	Rate	Rate	Rate	Rate	Rate	Rate																
	Dollars	Dollars	Dollars	Dollars	Dollars	Dollars	\$ cts.	\$ cts.	\$ cts.	\$ cts.	Month Day Year		\$ cts.	\$ cts.	\$ cts.	\$ cts.	\$ cts.	\$ cts.	\$ cts.	\$ cts.		
1	H	1					24		24		1 PAID IN FULL	MAY 17 1957										
2	H	53					1256		1256		2 PAID IN FULL	MAY 17 1957										
3	H	1					24		24		3 PAID IN FULL	MAY 17 1957										
4	H	1					24		24		4 PAID IN FULL	MAY 17 1957										
5	H	1					24		24		5 PAID IN FULL	MAY 17 1957	6449	7424								
6	H	1					24		24		6 PAID IN FULL	MAY 17 1957										
7	H	1					24		24		7 PAID IN FULL	MAY 17 1957										
8	H	1					24		24		8 PAID IN FULL	MAY 17 1957										
9																						
10																						
11	11 SOLD FOR TAXES						48		48													
12	12 SOLD FOR TAXES						48		48													
13	H	2					48		48		13 PAID IN FULL	MAY 17 1957										
14	H	2					48		48		14 PAID IN FULL	MAY 17 1957										
15	H	2					48		48		15 PAID IN FULL	MAY 17 1957										
16	H	2					48		48		16 PAID IN FULL	MAY 17 1957										
17	H	2					48		48		17 PAID IN FULL	MAY 17 1957	6484									
18	H	2					48		48		18 PAID IN FULL	MAY 17 1957										
19	H	2					48		48		19 PAID IN FULL	MAY 17 1957										
20	H	2					48		48		20 PAID IN FULL	MAY 17 1957										
							H 76		1904													
							H 4															
							H 80															

132-29
133-30
VILLAGE OF SYLVAN

Land & Aiken's 1st
Add'l to Sylvan Bldg
SYLVAN SHADY SHORE
Land & Aiken's 2nd
Add'l to
NORTH SYLVAN
CARLYON'S SYLVAN
Land & Aiken's 3rd

Assessment Roll and Tax List of Real Property in the Town of Sylvan

* Indicate Type of Property: R-Residential, C-Commercial, I-Industrial, U-Utility, F-Farm, L-Lakeshore, T-Timber, M-Mineral

Form 50 (56) MILLER-DAVIS COMPANY, MINNEAPOLIS

IN WHOSE NAME ASSESSED	TO WHOM TRANSFERRED	DESCRIPTION OF PROPERTY				TRUE AND FULL VALUATIONS										FINAL EQUALIZED VALUE			
		SUBDIVISION	Sec. or Lot	Town or Block	Rng.	Number of Acres of Land	LAND Exclusive of Structures and Improvements	BUILDINGS and Other Structures	MACHINERY Permanently Attached to Real Estate	TOTAL True and Full Value	RURAL		ALL OTHER				MACHINERY Permanently Attached to Real Estate	TOTAL ASSESSED VALUE	Total Assessed Value as Equalized by the Board of Review
											Acres	100ths	Homestead Up to \$4,000 20%	Over \$4,000 and Non-Homestead 33 1/3 %	Timber Land Class 3e 20%				
Chas. A. Johnson		Village of Sylvan	21	1															
"		"	22																
George M. & Bernice V. Wilder																			
"																			
Jacks F. & Ellen J. Marlow																			
"																			
Town of Sylvan																			
"																			
"																			
George M. & Bernice V. Wilder																			
"																			
"																			
"																			
"																			
"																			
"																			
"																			
"																			

Cass County, Minnesota, for Taxes for the Year 1956.

SOLD FOR TAXES	VALUATIONS BY SCHOOL DISTRICTS AS EQUALIZED BY DEPARTMENT OF TAXATION						Tax including State Homestead	State Tax on Non-Homestead	SPECIAL TAXES	TOTAL TAXES	PAID	WHEN PAID	Number of Receipt	March Settlement 1957	June Settlement 1957	Penalty	November Settlement 1957	Penalty	Collections to First Monday in January 1958	Penalty	Delinquent on First Monday in January 1958	Total Delinquent Tax and Penalty	REMARKS
	District No.	District No.	District No.	District No.	District No.	District No.																	
	Rate	Rate	Rate	Rate	Rate	Rate																	

133-29 133-30

VILLAGE OF SYLVAN

Land & Aiken's 1st Add'n to Sylvan Ben... SYLVAN SHADY SHORES... Land & Aiken's 2nd Add'n to NORTH SYLVAN... CARLYON'S SYLVAN PARK

Assessment Roll and Tax List of Real Property in the Town of Sylvan, Cass County, Minnesota, for Taxes for the Year 1956.

Form 5C (56) MILLER-SAYRE COMPANY, MINNEAPOLIS

* Indicate Type of Property: R-Residential, C-Commercial, I-Industrial, U-Utility, F-Farm, L-Lakeshore, T-Timber, M-Mineral

Table with columns: IN WHOSE NAME ASSESSED, TO WHOM TRANSFERRED, DESCRIPTION OF PROPERTY, TRUE AND FULL VALUATIONS, ASSESSED VALUATIONS, and FINAL EQUALIZED VALUE. Includes handwritten entries for Charles M. + Della B. Luttrell and Chas. H. Johnson.

Cass County, Minnesota, for Taxes for the Year 1956.

Table with columns: VALUATIONS BY SCHOOL DISTRICTS AS EQUALIZED BY DEPARTMENT OF TAXATION, TAXES, PAID, WHEN PAID, Number of Receipt, March Settlement, June Settlement, November Settlement, Collections to First Monday in January 1958, Delinquent on First Monday in January 1958, Total Delinquent Tax and Penalty, and REMARKS. Includes handwritten tax amounts and dates.

133-29 133-30

VILLAGE OF SYLVAN

Land & Aileen's 1st Add'n to SYLVAN BE... SYLVAN SHADY SHORES... Land & Aileen's 2nd Add'n to NORTH SYLVAN... LAND & AILEEN'S PARK SYLVAN

Assessment Roll and Tax List of Real Property in the Town of Sylvan, Cass County, Minnesota, for Taxes for the Year 1956.

* Indicate Type of Property: R-Residential, C-Commercial, I-Industrial, U-Utility, F-Farm, L-Lakeshore, T-Timber, M-Mineral

Form 5C (56) - MILEAGE DATA COMPANY, MINNEAPOLIS

Table with columns: IN WHOSE NAME ASSESSED, TO WHOM TRANSFERRED, DESCRIPTION OF PROPERTY, TRUE AND FULL VALUATIONS, ASSESSED VALUATIONS, and FINAL EQUALIZED VALUE. Includes handwritten entries for George M. & Bernice V. Skilder and Jack F. & Ellen J. Marlow.

Cass County, Minnesota, for Taxes for the Year 1956.

Table with columns: VALUATIONS BY SCHOOL DISTRICTS AS EQUALIZED BY DEPARTMENT OF TAXATION, Tax including State Homestead, State Tax on Non-Homestead, SPECIAL TAXES, TOTAL TAXES, PAID, WHEN PAID, Number of Receipt, March Settlement 1957, June Settlement 1957, November Settlement 1957, Collections to First Monday in January 1958, Delinquent on First Monday in January 1958, Total Delinquent Tax and Penalty, REMARKS. Includes handwritten entries for 'PAID IN FULL' and 'SOLD FOR TAXES'.

132-29, 133-30, VILLAGE OF SYLVAN

Land & Allen's 1st Add'n to SYLVAN BE... SYLVAN SHADY SHORES Add'n Land & Allen's 2nd Add'n NORTH SYLVAN CARLYON'S SYLVAN PARK

Assessment Roll and Tax List of Real Property in the Town of Sylvan,
* Indicate Type of Property: R-Residential, C-Commercial, I-Industrial, U-Utility, F-Farm, L-Lakeshore, T-Timber, M-Mineral

Form 5C (56) JULY-DAY COMPANY, MINNEAPOLIS

132-29
133-30

NORTH SYLVAN VILLAGE OF SYLVAN

PAVILION

IN WHOSE NAME ASSESSED	TO WHOM TRANSFERRED	DESCRIPTION OF PROPERTY					TRUE AND FULL VALUATIONS											FINAL EQUALIZED VALUE	SOLD FOR TAXES	VALUATIONS BY SCHOOL DISTRICTS AS EQUALIZED BY DEPARTMENT OF TAXATION						SPECIAL TAXES	TOTAL TAXES	PAID	WHEN PAID	Number of Receipt	March Settlement 1957	June Settlement 1957	Penalty	November Settlement 1957	Penalty	Collections to First Monday in January 1958	Penalty	Delinquent on First Monday in January 1958	Total Delinquent Tax and Penalty	REMARKS	
		SUBDIVISION	Sec. or Lot	Town or Block	Rng.	Number of Acres of Land	LAND Exclusive of Structures and Improvements	BUILDINGS and Other Structures	MACHINERY Permanently Attached to Real Estate	TOTAL True and Full Value	RURAL			ALL OTHER		MACHINERY Permanently Attached to Real Estate	TOTAL ASSESSED VALUE			Total Assessed Value as Equalized by the Board of Review	District No.	District No.	District No.	District No.	District No.																District No.
											Homestead Up to \$4,000 20%	Over \$4,000 and Non-Homestead 33 1/8%	Timber Land Class 3e 20%	Homestead Up to \$4,000 25%	Over \$4,000 and Non-Homestead 40%																										
State of Minnesota		North Sylvan	11																																						
State of Minnesota		Part of Sta of Twp 114 Sec. 13-133-30	12																																						

Cass County, Minnesota, for Taxes for the Year 1956.

Land & Allen's 1st Add'n to Sylvan Bead
SYLVAN SHADY SHORES
Land & Allen's 2nd Add'n to Sylvan Bead
CARTON'S SYLVAN

Assessment Roll and Tax List of Real Property in the Town of Sylvan, Cass County, Minnesota

* Indicate Type of Property: R-Residential, C-Commercial, I-Industrial, U-Utility, F-Farm, L-Lakeshore, T-Timber, M-Mineral

Form 5C (56) 1956-57

Table with columns: IN WHOSE NAME ASSESSED, TO WHOM TRANSFERRED, DESCRIPTION OF PROPERTY, TRUE AND FULL VALUATIONS, ASSESSED VALUATIONS, and FINAL EQUALIZED VALUE. Includes handwritten entries for Carlsson, Lay, Gray, Thielke, Hudson, Rodenwald, Peterson, Jagger, Schmidt, Carlson, Sweet, and Garrison.

Cass County, Minnesota, for Taxes for the Year 1956.

Table with columns: VALUATIONS BY SCHOOL DISTRICTS AS EQUALIZED BY DEPARTMENT OF TAXATION, Tax including State Homestead, State Tax on Non-Homestead, SPECIAL TAXES, TOTAL TAXES, PAID, WHEN PAID, Number of Receipt, March Settlement 1957, June Settlement 1957, Penalty, November Settlement 1957, Penalty, Collections to First Monday in January 1958, Penalty, Delinquent on First Monday in January 1958, Total Delinquent Tax and Penalty, REMARKS. Includes handwritten entries for Carlsson, Lay, Gray, Thielke, Hudson, Rodenwald, Peterson, Jagger, Schmidt, Carlson, Sweet, and Garrison.

132-29, 133-29, 133-30, NORTH SYLVAN VILLAGE OF SYLVAN, SYLVAN'S SYLVAN PARK

Land & Alien's 1st Add'n to Sylvan Bead, SYLVAN SHADY SHOES, Land & Alien's 2nd Add'n to Sylvan Bead, Add'n to Sylvan Bead

Assessment Roll and Tax List of Real Property in the Town of Sylvan, Cass County, Minnesota

Cass County, Minnesota, for Taxes for the Year 1956.

Form 5C (56) MILLER-DAY COMPANY, MINNEAPOLIS

* Indicate Type of Property: R-Residential, C-Commercial, I-Industrial, U-Utility, F-Farm, L-Lakeshore, T-Timber, M-Mineral

Table with columns: IN WHOSE NAME ASSESSED, TO WHOM TRANSFERRED, DESCRIPTION OF PROPERTY, TRUE AND FULL VALUATIONS, ASSESSED VALUATIONS, and FINAL EQUALIZED VALUE.

Table with columns: VALUATIONS BY SCHOOL DISTRICTS AS EQUALIZED BY DEPARTMENT OF TAXATION, Tax including State Homestead, State Tax on Non-Homestead, SPECIAL TAXES, TOTAL TAXES, PAID, WHEN PAID, Number of Receipt, March Settlement, June Settlement, November Settlement, Collections to First Monday in January 1958, Delinquent on First Monday in January 1958, Total Delinquent Tax and Penalty, and REMARKS.

133-29, 133-30, NORTH SYLVAN VILLAGE OF SYLVAN, SYLVAN'S SYLVAN PARK

Land & Allen's 1st Add'n to SYLVAN BEAD, SYLVAN SHADY SHORES, Land & Allen's 2nd Add'n to SYLVAN BEAD

Assessment Roll and Tax List of Real Property in the Town of Sylvan, Cass County, Minnesota, for Taxes for the Year 1956.

* Indicate Type of Property: R-Residential, C-Commercial, I-Industrial, U-Utility, F-Farm, L-Lakeshore, T-Timber, M-Mineral

Form 5C (56) HILLMAN-BAYNE COMPANY, MINNEAPOLIS

IN WHOSE NAME ASSESSED	TO WHOM TRANSFERRED	SUBDIVISION	DESCRIPTION OF PROPERTY			No. School District	Indicate Homestead Yes or No	Indicate Agricultural Yes or No	Indicate Type of Property	TRUE AND FULL VALUATIONS			ASSESSED VALUATIONS						FINAL EQUALIZED VALUE										
			Sec. or Lot	Town or Block	Rng.					Number of Acres of Land	LAND Structures and Improvements	BUILDINGS and Other Structures	MACHINERY Permanently Attached to Real Estate	TOTAL True and Full Value	RURAL		ALL OTHER			MACHINERY Permanently Attached to Real Estate	TOTAL ASSESSED VALUE	Total Assessed Value as Equalized by the Board of Review							
															Acres	100ths	Dollars	Dollars					Dollars	Dollars	Dollars	Homestead		Dollars	Dollars
																										20%	33 1/3%		
Frieda A. Carlson		Carlson's Sylvan Park	24						45					15		15													
"	"	"	30						30					10		10													
"	"	"	31						30					10		10													
"	"	"	32						30					10		10													
"	"	"	33						30					10		10													
"	"	"	34						30					10		10													
Township of Sylvan			35						Exempt																				
"	"	"	36						"																				
"	"	"	37						"																				
"	"	"	38						"																				
"	"	"	39						"																				
"	"	"	40						"																				
"	"	"	41						"																				
"	"	"	42						"																				
"	"	"	43						"																				
"	"	"	44						"																				
Arnold E. Erickson			45						No No L	24				8		8													
Hector A. Carlson			46						" " "	24				8		8													
"	"	"	47						" " "	24				8		8													
Chas. R. + Math. M. Woodhouse			48						" " "	24				8		8													
"	"	"								291				97		97													

Cass County, Minnesota, for Taxes for the Year 1956.

SOLD FOR TAXES	VALUATIONS BY SCHOOL DISTRICTS AS EQUALIZED BY DEPARTMENT OF TAXATION						Tax Including State Homestead	State Tax on Non-Homestead	SPECIAL TAXES	TOTAL TAXES	PAID	WHEN PAID	Number of Receipt	March Settlement 1957	June Settlement 1957	Penalty	November Settlement 1957	Penalty	Collections to First Monday in January 1958	Penalty	Delinquent on First Monday in January 1958	Total Delinquent Tax and Penalty	REMARKS
	District No.	District No.	District No.	District No.	District No.	District No.																	
	Rate	Rate	Rate	Rate	Rate	Rate																	
	Mills	Mills	Mills	Mills	Mills	Mills																	
	15					356	08		364	1	PAID IN FULL MAY 31 1957												
	10					236	06		242	2	PAID IN FULL MAY 31 1957												
	10					236	06		242	3	PAID IN FULL MAY 31 1957	7108											
	10					236	06		242	4	PAID IN FULL MAY 31 1957												
	10					236	06		242	5	PAID IN FULL MAY 31 1957												
	10					236	06		242	6	PAID IN FULL MAY 31 1957												
										7													
										8													
										9													
										10													
										11													
										12													
										13													
										14													
										15													
										16													
										17													
										18													
										19													
										20													
										97													

132-29 133-30 133-31 133-32 133-33 133-34 133-35 133-36 133-37 133-38 133-39 133-40 133-41 133-42 133-43 133-44 133-45 133-46 133-47 133-48 133-49 133-50 133-51 133-52 133-53 133-54 133-55 133-56 133-57 133-58 133-59 133-60 133-61 133-62 133-63 133-64 133-65 133-66 133-67 133-68 133-69 133-70 133-71 133-72 133-73 133-74 133-75 133-76 133-77 133-78 133-79 133-80 133-81 133-82 133-83 133-84 133-85 133-86 133-87 133-88 133-89 133-90 133-91 133-92 133-93 133-94 133-95 133-96 133-97 133-98 133-99 133-100

Land & Alien's 1st Add'n to SYLVAN BEAD SYLVAN SHADY SHORES Land & Alien's 2nd Add'n to SYLVAN BEAD Add'n to SYLVAN BEAD Land & Aliens

Assessment Roll and Tax List of Real Property in the Town of Sylvan

Indicate Type of Property: R-Residential, C-Commercial, I-Industrial, U-Utility, F-Farm, L-Lakeshore, T-Timber, M-Mineral

Form 30 (56) MILLER-SAYRE COMPANY, MINNEAPOLIS

Table with columns: IN WHOSE NAME ASSESSED, TO WHOM TRANSFERRED, DESCRIPTION OF PROPERTY, TRUE AND FULL VALUATIONS, ASSESSED VALUATIONS, and FINAL EQUALIZED VALUE. Includes handwritten entries for various property owners like 'Chas. R. & Mabel M. Woodhouse' and 'Elmer P. Carrier'.

Cass County, Minnesota, for Taxes for the Year 1956.

Table with columns: SOLD FOR TAXES, VALUATIONS BY SCHOOL DISTRICTS AS EQUALIZED BY DEPARTMENT OF TAXATION, Tax including State Homestead, State Tax on Non-Homestead, SPECIAL TAXES, TOTAL TAXES, PAID, WHEN PAID, Number of Receipt, March Settlement 1957, June Settlement 1957, Penalty, November Settlement 1957, Penalty, Collections to First Monday in January 1958, Delinquent on First Monday in January 1958, Total Delinquent Tax and Penalty, and REMARKS. Includes handwritten entries for various property owners and their tax payment status.

132-29, 133-30, NORTH SYLVAN VILLAGE OF SYLVAN, ALYON'S SYLVAN PARK

Land & Alien's 1st Add'n to Sylvan B... SYLVAN SHADY SHORES, Land & Alien's 2nd Add'n to Sylvan B...

Assessment Roll and Tax List of Real Property in the Town of Sylvan, Cass County, Minnesota, for Taxes for the Year 1956.

Form 50 (56) MILLER-GILVE COMPANY, MINNEAPOLIS

* Indicate Type of Property: R-Residential, C-Commercial, I-Industrial, U-Utility, F-Farm, L-Lakeshore, T-Timber, M-Mineral

Table with columns: IN WHOSE NAME ASSESSED, TO WHOM TRANSFERRED, DESCRIPTION OF PROPERTY, TRUE AND FULL VALUATIONS, ASSESSED VALUATIONS, and FINAL EQUALIZED VALUE. Includes handwritten entries for Carlgeis Sylvan Park and Ruth Bremner.

Cass County, Minnesota, for Taxes for the Year 1956.

Table with columns: SOLD FOR TAXES, VALUATIONS BY SCHOOL DISTRICTS AS EQUALIZED BY DEPARTMENT OF TAXATION, Tax including State Homestead, State Tax on Non-Homestead, SPECIAL TAXES, TOTAL TAXES, PAID, WHEN PAID, Number of Receipt, March Settlement 1957, June Settlement 1957, Penalty, November Settlement 1957, Penalty, Collections to First Monday in January 1958, Penalty, Delinquent on First Monday in January 1958, Total Delinquent Tax and Penalty, REMARKS.

132-29, 133-29, 133-30, NORTH SYLVAN VILLAGE OF SYLVAN, ALYON'S SYLVAN PARK

Land & Alien's 1st Add'n to Sylvan Bead SYLVAN SHADY SHOES Land & Alien's 2nd Add'n to Sylvan Bead Add'n Sylvan B

Assessment Roll and Tax List of Real Property in the Town of Sylvan, Cass County, Minnesota, for Taxes for the Year 1956.

* Indicate Type of Property: R-Residential, C-Commercial, I-Industrial, U-Utility, F-Farm, L-Lakeshore, T-Timber, M-Mineral

Form 5C (56) BILLS-BAYB COMPANY, MINNEAPOLIS

Table with columns: IN WHOSE NAME ASSESSED, TO WHOM TRANSFERRED, SUBDIVISION, Sec. of Lot, Town or Block, Rng., Number of Acres of Land, TRUE AND FULL VALUATIONS (LAND, BUILDINGS, MACHINERY, TOTAL), ASSESSED VALUATIONS (RURAL, ALL OTHER, MACHINERY, TOTAL ASSESSED VALUE), FINAL EQUALIZED VALUE.

Cass County, Minnesota, for Taxes for the Year 1956.

Table with columns: SOLD FOR TAXES, VALUATIONS BY SCHOOL DISTRICTS AS EQUALIZED BY DEPARTMENT OF TAXATION (District No., Rate, Mills), Tax including State Homestead, State Tax on Non-Homestead, SPECIAL TAXES, TOTAL TAXES, PAID, WHEN PAID (Month, Day, Year), Number of Receipt, March Settlement 1957, June Settlement 1957, Penalty, November Settlement 1957, Collections to First Monday in January 1958, Delinquent on First Monday in January 1958, Total Delinquent Tax and Penalty, REMARKS.

133-29 133-30 133-31 133-32 133-33 133-34 133-35 133-36 133-37 133-38 133-39 133-40

Land & Allen's 1st Add'n to Sylvan Beach SYLVAN SHADY SHORES Land & Allen's 2nd Add'n to Sylvan Beach Add'n Sylvan Beach

Assessment Roll and Tax List of Real Property in the Town of Sylvan

Indicate Type of Property: R-Residential, C-Commercial, I-Industrial, U-Utility, F-Farm, L-Lakeshore, T-Timber, M-Mineral

Form 5C (56) BULLIS-BAYNE COMPANY, MINNEAPOLIS

Main assessment table with columns: IN WHOSE NAME ASSESSED, TO WHOM TRANSFERRED, SUBDIVISION, TRUE AND FULL VALUATIONS, ASSESSED VALUATIONS, and FINAL EQUALIZED VALUE.

Cass County, Minnesota, for Taxes for the Year 1956.

Tax payment table with columns: VALUATIONS BY SCHOOL DISTRICTS AS EQUALIZED BY DEPARTMENT OF TAXATION, Tax including State Homestead, State Tax on Non-Homestead, SPECIAL TAXES, TOTAL TAXES, PAID, WHEN PAID, Number of Receipt, March Settlement 1957, June Settlement 1957, November Settlement 1957, Collections to First Monday in January 1958, Delinquent on First Monday in January 1958, Total Delinquent Tax and Penalty, REMARKS.

132-29

133-30

NORTH SYLVAN VILLAGE OF SYLVAN

LYON'S SYLVAN PARK

Land & Allen's 1st Add'n to Sylvan Beach SYLVAN SHADY SHORES

Land & Allen's 2nd Add'n to Sylvan Beach Land & Allen's

Assessment Roll and Tax List of Real Property in the Town of Sylvan, Cass County, Minnesota, for Taxes for the Year 1956.

Form 5C (56) BILLS-BAYNE COMPANY, MINNEAPOLIS

* Indicate Type of Property: R-Residential, C-Commercial, I-Industrial, U-Utility, F-Farm, L-Lakeshore, T-Timber, M-Mineral

Table with columns: IN WHOSE NAME ASSESSED, TO WHOM TRANSFERRED, DESCRIPTION OF PROPERTY, TRUE AND FULL VALUATIONS, ASSESSED VALUATIONS, VALUATIONS BY SCHOOL DISTRICTS AS EQUALIZED BY DEPARTMENT OF TAXATION, TAX INCLUDING STATE HOMESTEAD, SPECIAL TAXES, TOTAL TAXES, PAID, WHEN PAID, Number of Receipt, March Settlement 1957, June Settlement 1957, Penalty, November Settlement 1957, Collections to First Monday in January 1958, Delinquent on First Monday in January 1958, Total Delinquent Tax and Penalty, REMARKS.

132-29, 133-29, 133-30, NORTH SYLVAN, SYLVAN SHADY SHORES, SYLVAN PARK, Add'n to SYLVAN BEAD, Add'n to SYLVAN BEAD

Land & Alien's 1st Add'n to SYLVAN BEAD, SYLVAN SHADY SHORES, Land & Alien's 2nd Add'n to SYLVAN BEAD

Assessment Roll and Tax List of Real Property in the Town of Sylvan,

Cass County, Minnesota, for Taxes for the Year 1956.

* Indicate Type of Property: R-Residential, C-Commercial, I-Industrial, U-Utility, F-Farm, L-Lakeshore, T-Timber, M-Mineral

IN WHOSE NAME ASSESSED	TO WHOM TRANSFERRED	SUBDIVISION	DESCRIPTION OF PROPERTY			No. School District	Indicate Homestead Yes or No	Indicate Agricultural Yes or No	Indicate Type of Property	TRUE AND FULL VALUATIONS						ASSESSED VALUATIONS						SOLD FOR TAXES	VALUATIONS BY SCHOOL DISTRICTS AS EQUALIZED BY DEPARTMENT OF TAXATION						SPECIAL TAXES	TOTAL TAXES	PAID	WHEN PAID	Number of Receipt	March Settlement 1957	June Settlement 1957	Penalty	November Settlement 1957	Penalty	Collections to First Monday in January 1958	Penalty	Delinquent on First Monday in January 1958	Total Delinquent Tax and Penalty	REMARKS				
			Sec. or Lot	Town or Block	Rng.					Number of Acres of Land	MACHINERY Permanently Attached to Real Estate	TOTAL True and Full Value	RURAL		ALL OTHER			MACHINERY Permanently Attached to Real Estate	TOTAL ASSESSED VALUE	Total Assessed Value as Equalized by the Board of Review	Final Equalized Value		VALUATIONS BY SCHOOL DISTRICTS AS EQUALIZED BY DEPARTMENT OF TAXATION																								
													Acres	100ths	Homestead Up to \$4,000 20%	Over \$4,000 and Non-Homestead 33 1/3 %	Timber Land Class 3e 20%						Homestead Up to \$4,000 25%	Over \$4,000 and Non-Homestead 40%	District No.	District No.	District No.	District No.																District No.	District No.	Tax including State Homestead	State Tax on Non-Homestead
			Dollars	Dollars	Dollars					Dollars	Dollars	Dollars	Dollars	Dollars	Dollars	Dollars	Dollars	Dollars	Dollars	Dollars	Dollars		Dollars	Dollars	Dollars	Dollars	Dollars	Dollars																Dollars	Dollars	Dollars	Dollars
John & Annie Ross	Frank L. & Lizziell Allen		1			15	WS	No	L	30	490	540	180				180			180					4266	96	4362	1	PAID IN FULL	MAY 31 1957	10222		4362														
Frank & Alice M. Allen			2							50	175	225	75				75			75					1778	40	1818	2	PAID IN FULL	MAY 31 1957	9188		1818														
Blatney & Kathryn English			3							50	175	225	75				75			75					1778	40	1818	3	PAID IN FULL	FEB 4 1957	1467	2230															
"	"	E 1/2 of	4							51		51	17				17			17					402	10	412	4	PAID IN FULL	FEB 4 1957																	
Rolfe & Ethel C. Lynes		W 1/2 of	4							50	250	300	100				100			100					2370	54	2424	5	PAID IN FULL	OCT 31 1957	16638		1418		1418												
"	"		5							51		51	17				17			17					402	10	412	6	PAID IN FULL	OCT 31 1957	6432																
Victoria V. Clifton			6							66	225	291	97				97			97					2298	52	2350	7	PAID IN FULL	MAY 17 1957	6505		2350														
George & Alice J. Frazier			7							50	175	225	75				75			75					1778	40	1818	8	PAID IN FULL	MAY 17 1957	6456		1818														
William J. & Aveling M. Crocker			8							51		51	17				17			17					402	10	412	9	PAID IN FULL	MAY 31 1957	9120		412														
Frank L. Allen	Symone A. Newsham		9							51		51	17				17			17					402	10	412	10	PAID IN FULL	MAY 31 1957	9188		412														
Dr. R. P. & Marie Keltouh			10							45		45	15				15			15					356	08	364	11	PAID IN FULL	MAY 17 1957																	
"	"		11							45		45	15				15			15					356	08	364	12	PAID IN FULL	MAY 17 1957	4457		2860														
"	"		12							45		45	15				15			15					356	08	364	13	PAID IN FULL	MAY 17 1957																	
"	"	E 1/2 of	13							44	175	219	73				73			73					1730	38	1768	14	PAID IN FULL	MAY 17 1957																	
Paul J. & Eva M. Martens		W 1/2 of	13							45		45	15				15			15					356	08	364	15	PAID IN FULL	MAY 17 1957			364														
"	"		14							46	200	246	82				82			82					1942	44	1986	16	PAID IN FULL	MAY 17 1957	6458		1986														
"	"		15							30		30	10				10			10					236	06	242	17	PAID IN FULL	MAY 17 1957			242														
			18																																												
			19																																												
			20																																												
									820	1865	2685	895				895			895					21208	482	21690			2230	18042	1418																

132-29
133-30
NORTH SYLVAN PARK
SYLVAN SHADY SHORES
Land & Allen's 1st Add'n Sylvan Beach
Land & Allen's 2nd Add'n Sylvan Beach

Assessment Roll and Tax List of Real Property in the Township of Sylvan, Cass County, Minnesota, for Taxes for the Year 1956.

* Indicate Type of Property: R-Residential, C-Commercial, I-Industrial, U-Utility, F-Farm, L-Lakeshore, T-Timber, M-Mineral

Form 5C (56) MILLER-SAYRE COMPANY, MINNEAPOLIS

Table with columns: IN WHOSE NAME ASSESSED, TO WHOM TRANSFERRED, SUBDIVISION, DESCRIPTION OF PROPERTY, TRUE AND FULL VALUATIONS, ASSESSED VALUATIONS, VALUATIONS BY SCHOOL DISTRICTS AS EQUALIZED BY DEPARTMENT OF TAXATION, TAXES, PAID, WHEN PAID, Number of Receipt, March Settlement 1957, June Settlement 1957, Penalty, November Settlement 1957, Collections to First Monday in January 1958, Delinquent on First Monday in January 1958, Total Delinquent Tax and Penalty, REMARKS.

133-29, 133-30, 133-31, 133-32, 133-33, 133-34, 133-35, 133-36, 133-37, 133-38, 133-39, 133-40, 133-41, 133-42, 133-43, 133-44, 133-45, 133-46, 133-47, 133-48, 133-49, 133-50, 133-51, 133-52, 133-53, 133-54, 133-55, 133-56, 133-57, 133-58, 133-59, 133-60, 133-61, 133-62, 133-63, 133-64, 133-65, 133-66, 133-67, 133-68, 133-69, 133-70, 133-71, 133-72, 133-73, 133-74, 133-75, 133-76, 133-77, 133-78, 133-79, 133-80, 133-81, 133-82, 133-83, 133-84, 133-85, 133-86, 133-87, 133-88, 133-89, 133-90, 133-91, 133-92, 133-93, 133-94, 133-95, 133-96, 133-97, 133-98, 133-99, 133-100

Land & Aileen's 2nd Add'n to Sylvan Beach

Assessment Roll and Tax List of Real Property in the Township of Sylvan, Cass County, Minnesota, for Taxes for the Year 1956.

Indicate Type of Property: R-Residential, C-Commercial, I-Industrial, U-Utility, F-Farm, L-Lakeshore, T-Timber, M-Mineral

Form 5C (56) MLLER-DAVIS COMPANY, MINNEAPOLIS

Table with columns: IN WHOSE NAME ASSESSED, TO WHOM TRANSFERRED, DESCRIPTION OF PROPERTY, TRUE AND FULL VALUATIONS, ASSESSED VALUATIONS, FINAL EQUALIZED VALUE.

George R. & Bernice M. Lumberg
O. N. James
Orval H. & Esther A. James
Elmer E. Erickson

Sylvan Shady Shore
21 1
22
23
24
25
26

Table with columns: LAND, BUILDINGS, MACHINERY, TOTAL True and Full Value, RURAL, ALL OTHER, MACHINERY, TOTAL ASSESSED VALUE, Total Assessed Value as Equalized by the Board of Review, FINAL EQUALIZED VALUE.

185 400 585 195 195

Cass County, Minnesota, for Taxes for the Year 1956.

Table with columns: VALUATIONS BY SCHOOL DISTRICTS AS EQUALIZED BY DEPARTMENT OF TAXATION, Tax including State Homestead, State Tax on Non-Homestead, SPECIAL TAXES, TOTAL TAXES, PAID, WHEN PAID, Number of Receipt, March Settlement 1957, June Settlement 1957, November Settlement 1957, Penalty, Collections to First Monday in January 1958, Delinquent on First Monday in January 1958, Total Delinquent Tax and Penalty, REMARKS.

SOLD FOR TAXES
1 83
2 13
3 80
4 17
5 1
6 1

Table with columns: District No., District Rate, District No., District Rate, District No., District Rate, District No., District Rate, District No., District Rate, Tax including State Homestead, State Tax on Non-Homestead, SPECIAL TAXES, TOTAL TAXES, PAID, WHEN PAID, Number of Receipt, March Settlement 1957, June Settlement 1957, November Settlement 1957, Penalty, Collections to First Monday in January 1958, Delinquent on First Monday in January 1958, Total Delinquent Tax and Penalty, REMARKS.

195 4620 102 4722 4262 460

133-29 133-30 133-31 133-32 133-33 133-34 133-35 133-36 133-37 133-38 133-39 133-40 133-41 133-42 133-43 133-44 133-45 133-46 133-47 133-48 133-49 133-50

Land & Allen's 2nd Add'n to Sylvan Beach

Assessment Roll and Tax List of Real Property in the Township of Sylvan, Cass County, Minnesota, for Taxes for the Year 1956.

Indicate Type of Property: R-Residential, C-Commercial, I-Industrial, U-Utility, F-Farm, L-Lakeshore, T-Timber, M-Mineral

Form 5C (56) MILLER-BAYNE COMPANY, MINNEAPOLIS

Table with columns: IN WHOSE NAME ASSESSED, TO WHOM TRANSFERRED, SUBDIVISION, Sec. or Lot, Town or Block, Reg., Number of Acres of Land, TRUE AND FULL VALUATIONS (LAND, BUILDINGS, MACHINERY, TOTAL), ASSESSED VALUATIONS (RURAL, ALL OTHER, MACHINERY, TOTAL ASSESSED), FINAL EQUALIZED VALUE.

Handwritten entries for lots 1-14, including names like Nancy Haldorf, Elmer C. Erickson, Delia Bailey, Arthur Lampman, Herbert K. Fortner, Clyde + Edna Woods + Ernest Ethel Shires, J.B. + Bertha C. Nelson.

Summary totals for columns 16, 17, 18, 19, 20: 162, 625, 697, 229, 229

Cass County, Minnesota, for Taxes for the Year 1956.

Table with columns: VALUATIONS BY SCHOOL DISTRICTS AS EQUALIZED BY DEPARTMENT OF TAXATION (District No., Rate, etc.), Tax including State Homestead, State Tax on Non-Homestead, SPECIAL TAXES, TOTAL TAXES, PAID, WHEN PAID, Number of Receipt, March Settlement, June Settlement, November Settlement, Collections to First Monday in January, Delinquent on First Monday in January, Total Delinquent Tax and Penalty, REMARKS.

Handwritten tax data for lots 1-14, including tax amounts (e.g., 18.96, 118, 118, 1304), payment dates (e.g., PAID IN FULL MAY 17 1957), and remarks.

Summary totals for columns 22, 23, 24, 25, 26, 27, 28, 29, 30: 229, 5434, 124, 5558, 2816, 2354, 388

Vertical text on the left margin: 133-29, 133-30, 133-31, 133-32, 133-33, 133-34, 133-35, 133-36, 133-37, 133-38, 133-39, 133-40, 133-41, 133-42, 133-43, 133-44, 133-45, 133-46, 133-47, 133-48, 133-49, 133-50, 133-51, 133-52, 133-53, 133-54, 133-55, 133-56, 133-57, 133-58, 133-59, 133-60, 133-61, 133-62, 133-63, 133-64, 133-65, 133-66, 133-67, 133-68, 133-69, 133-70, 133-71, 133-72, 133-73, 133-74, 133-75, 133-76, 133-77, 133-78, 133-79, 133-80, 133-81, 133-82, 133-83, 133-84, 133-85, 133-86, 133-87, 133-88, 133-89, 133-90, 133-91, 133-92, 133-93, 133-94, 133-95, 133-96, 133-97, 133-98, 133-99, 133-100.

Vertical text on the right margin: 133-29, 133-30, 133-31, 133-32, 133-33, 133-34, 133-35, 133-36, 133-37, 133-38, 133-39, 133-40, 133-41, 133-42, 133-43, 133-44, 133-45, 133-46, 133-47, 133-48, 133-49, 133-50, 133-51, 133-52, 133-53, 133-54, 133-55, 133-56, 133-57, 133-58, 133-59, 133-60, 133-61, 133-62, 133-63, 133-64, 133-65, 133-66, 133-67, 133-68, 133-69, 133-70, 133-71, 133-72, 133-73, 133-74, 133-75, 133-76, 133-77, 133-78, 133-79, 133-80, 133-81, 133-82, 133-83, 133-84, 133-85, 133-86, 133-87, 133-88, 133-89, 133-90, 133-91, 133-92, 133-93, 133-94, 133-95, 133-96, 133-97, 133-98, 133-99, 133-100.

Assessment Roll and Tax List of Real Property in the Town of Sylvan, Minnesota

* Indicate Type of Property: R-Residential, C-Commercial, I-Industrial, U-Utility, F-Farm, L-Lakeshore, T-Timber, M-Mineral

Form 5C (56) MARS-DAVIS COMPANY, MINNEAPOLIS

Table with columns: IN WHOSE NAME ASSESSED, TO WHOM TRANSFERRED, SUBDIVISION, Sec. of Lot, Town or Block, Reg., Number of Acres of Land, TRUE AND FULL VALUATIONS (LAND, BUILDINGS, MACHINERY, TOTAL), ASSESSED VALUATIONS (RURAL, ALL OTHER, MACHINERY, TOTAL ASSESSED), Total Assessed Value as Equalized by the Board of Review, FINAL EQUALIZED VALUE.

Handwritten names: Anton J. & Hermine Jager, Charles W. Babcock, Elmer E. Erickson, Steve Smykle & N.C. Ebert, Ruth Lawless & E.C. Stagers, Herbert G. Johnston, Vernon & Maria L. Andersson, Fred & Florence Schmidt, Ernest & Eva Mae Munson, William Nechn & Nellie L. Kerwin, Jack M. & Leonard D. Dunham, Herbert H. Fortner, George R. Wilson & Emma D. Wilson, Chester H. & Marguerite A. Tinney

Sylvan Shady Shores

664 2124 3398 120 926 1046

Cass County, Minnesota, for Taxes for the Year 1956.

Table with columns: SOLD FOR TAXES, VALUATIONS BY SCHOOL DISTRICTS AS EQUALIZED BY DEPARTMENT OF TAXATION (District No., Rate, Mills), Tax including State Homestead, State Tax on Non-Homestead, SPECIAL TAXES, TOTAL TAXES, PAID, WHEN PAID, Number of Receipt, March Settlement 1957, June Settlement 1957, Penalty, November Settlement 1957, Penalty, Collections to First Monday in January 1958, Penalty, Delinquent on First Monday in January 1958, Total Delinquent Tax and Penalty, REMARKS.

Handwritten tax details: 1 3 72 02 74 1 PAID IN FULL MAY 2 1 1957, 2 100 2370 54 2424 2 PAID IN FULL MAY 2 1 1957, 3 17 402 10 412 3, 4 108 2560 58 2618 4 PAID IN FULL MAY 3 1 1957, 5 60 1422 1422 5, 6 60 1422 1422 6 Balance Paid AUG 6 1957, 7 83 1966 44 2010 7, 8 133 3152 10 3222 8 PAID IN FULL MAY 1 7 1957, 9 83 1966 44 2010 9 PAID IN FULL MAY 3 1 1957, 10 75 1778 40 1818 10 PAID IN FULL JAN 3 0 1957, 11 75 1778 40 1818 11, 12 83 1966 44 2010 12 PAID IN FULL FEB 4 1957, 13 82 1966 44 2010 13 PAID IN FULL MAY 3 1 1957, 14 82 1966 44 2010 14 1st Half Paid MAY 2 1 1957

Handwritten totals: 120 926 1046 24786 494 25280 3828 13563 2227 5662

133-29 133-30 133-31 133-32 133-33 133-34 133-35 133-36 133-37 133-38 133-39 133-40

Land & Allen's 2nd Add'n to Sylvan Beach

Assessment Roll and Tax List of Real Property in the Town of Sylvan, Cass County, Minnesota, for Taxes for the Year 1956.

Cass County, Minnesota, for Taxes for the Year 1956.

Form 5C (56) - JULY 1955 - REVISED

* Indicate Type of Property: R-Residential, C-Commercial, I-Industrial, U-Utility, F-Farm, L-Lakeshore, T-Timber, M-Mineral

Main table with columns: IN WHOSE NAME ASSESSED, TO WHOM TRANSFERRED, DESCRIPTION OF PROPERTY, TRUE AND FULL VALUATIONS, ASSESSED VALUATIONS, VALUATIONS BY SCHOOL DISTRICTS AS EQUALIZED BY DEPARTMENT OF TAXATION, TAXES, PAID, WHEN PAID, etc.

132-29, 133-30, 133-31, 133-32, 133-33, 133-34, 133-35, 133-36, 133-37, 133-38, 133-39, 133-40, 133-41, 133-42, 133-43, 133-44, 133-45, 133-46, 133-47, 133-48, 133-49, 133-50, 133-51, 133-52, 133-53, 133-54, 133-55, 133-56, 133-57, 133-58, 133-59, 133-60, 133-61, 133-62, 133-63, 133-64, 133-65, 133-66, 133-67, 133-68, 133-69, 133-70, 133-71, 133-72, 133-73, 133-74, 133-75, 133-76, 133-77, 133-78, 133-79, 133-80, 133-81, 133-82, 133-83, 133-84, 133-85, 133-86, 133-87, 133-88, 133-89, 133-90, 133-91, 133-92, 133-93, 133-94, 133-95, 133-96, 133-97, 133-98, 133-99, 133-100

Land & Alien's 2nd Add'n to Sylvan Beach

Assessment Roll and Tax List of Real Property in the Town of Sylvan

Indicate Type of Property: R-Residential, C-Commercial, I-Industrial, U-Utility, F-Farm, L-Lakeshore, T-Timber, M-Mineral

Form 5C (56) MILLER-BRYCE COMPANY, MINNEAPOLIS

Table with columns: IN WHOSE NAME ASSESSED, TO WHOM TRANSFERRED, SUBDIVISION, DESCRIPTION OF PROPERTY, TRUE AND FULL VALUATIONS, ASSESSED VALUATIONS, VALUATIONS BY SCHOOL DISTRICTS AS EQUALIZED BY DEPARTMENT OF TAXATION, SOLD FOR TAXES, SPECIAL TAXES, TOTAL TAXES, PAID, WHEN PAID, Number of Receipt, March Settlement, June Settlement, November Settlement, Collections to First Monday in January, Delinquent on First Monday in January, Total Delinquent Tax and Penalty, REMARKS.

Cass County, Minnesota, for Taxes for the Year 1956.

Table with columns: VALUATIONS BY SCHOOL DISTRICTS AS EQUALIZED BY DEPARTMENT OF TAXATION, SOLD FOR TAXES, SPECIAL TAXES, TOTAL TAXES, PAID, WHEN PAID, Number of Receipt, March Settlement, June Settlement, November Settlement, Collections to First Monday in January, Delinquent on First Monday in January, Total Delinquent Tax and Penalty, REMARKS.

133-29 133-30 133-31 133-32 133-33 133-34 133-35 133-36 133-37 133-38 133-39 133-40 133-41 133-42 133-43 133-44 133-45 133-46 133-47 133-48 133-49 133-50

Land & Allens 3rd Add'n Sylvan Beach

Assessment Roll and Tax List of Real Property in the Town of Sylvan, Cass County, Minnesota, for Taxes for the Year 1956.

Indicate Type of Property: R-Residential, C-Commercial, I-Industrial, U-Utility, F-Farm, L-Lakeshore, T-Timber, M-Mineral

Form 50 (56) - JULY 1955

Table with columns: IN WHOSE NAME ASSESSED, TO WHOM TRANSFERRED, SUBDIVISION, DESCRIPTION OF PROPERTY, TRUE AND FULL VALUATIONS, ASSESSED VALUATIONS, VALUATIONS BY SCHOOL DISTRICTS AS EQUALIZED BY DEPARTMENT OF TAXATION, TAXES, PAID, WHEN PAID, Number of Receipt, March Settlement, June Settlement, Penalty, November Settlement, Collections to First Monday in January 1958, Delinquent on First Monday in January 1958, Total Delinquent Tax and Penalty, REMARKS.

Raymond & Katherine Herron
Victor L. & Vona A. Lohmann
Vernon A. & Ruth C. Olson
Frank L. & Alice M. Allen
Earl M. & Alice J. Nelson

Land & Allen's 3rd Add'n Sylvan Beach

214 650 864 288 288 6820 150 6970 6970

133-29 133-30 133-31 133-32 133-33 133-34 133-35 133-36 133-37 133-38 133-39 133-40 133-41 133-42 133-43 133-44 133-45 133-46 133-47 133-48 133-49 133-50

Land & Allens 3rd Add'n Sylvan Beach

