

Assessment & Tax List - 1954

Sylvan







**SUMMARY OF TAX COLLECTION**

Original Levy	- - - - -	\$ 21,382.44	
Additions	- - - - -	\$ 29.32	
			\$ 21,412.76
Abatements	- - - - -	\$ 46.60	
			\$ 21,366.16
COLLECTIONS			
March Settlement	- - - - -	\$ 1,799.43	
June Settlement	- - - - -	\$ 5,959.11	
November Settlement	- - - - -	\$ 2,112.04	
January Settlement	- - - - -	\$ 335.80	\$ 30,206.38
			\$ .....
Over Collected	- - - - -	\$ .....	
Under Collected	- - - - -	\$ .04	
Delinquent	- - - - -	\$ 1,159.74	\$ 1,159.78
Total	- - - - -		\$ 21,366.16

133-30  
 van  
 Gaulton's Sylvan Park  
 each  
 Ireland & Allen's  
 address to Sylvan



























Assessment Roll and Tax List of Real Property in the Town of Sylvan

\*Indicate Type of Property: R-Residential, C-Commercial, I-Industrial, U-Utility, F-Farm

Cass County, Minnesota, for Taxes for the Year 1954.

Table with columns: IN WHOSE NAME ASSESSED, TO WHOM TRANSFERRED, DESCRIPTION OF PROPERTY, TRUE AND FULL VALUATIONS, ASSESSED VALUATIONS, VALUATIONS BY SCHOOL DISTRICTS AS EQUALIZED BY DEPARTMENT OF TAXATION, Tax including State Homestead, SPECIAL TAXES, TOTAL TAXES, PAID, WHEN PAID, Number of Receipt, March Settlement 1955, June Settlement 1955, Penalty, November Settlement 1955, Collections to First Monday in January 1956, Delinquent on First Monday in January 1956, Total Delinquent Tax and Penalty, REMARKS.

Brown + Laura Peterson

Ella Nordine

Barney + Olin Ostens

Vivian D. Anderson

Vertical text on the right edge: Village of Sylvan, North Sylvan, Sylvan's Sylvan Park, and address to Sylvan.



Assessment Roll and Tax List of Real Property in the Town of Sylvan

Cass County, Minnesota, for Taxes for the Year 1954.

Form SCD (54) MILLER-DAY COMPANY, MINNEAPOLIS

\*Indicate Type of Property: R-Residential, C-Commercial, I-Industrial, U-Utility, F-Farm

Table with columns: IN WHOSE NAME ASSESSED, TO WHOM TRANSFERRED, DESCRIPTION OF PROPERTY, TRUE AND FULL VALUATIONS (RURAL, ALL OTHER, MACHINERY, TOTAL ASSESSED VALUE), FINAL EQUALIZED VALUE, SOLD FOR TAXES, VALUATIONS BY SCHOOL DISTRICTS AS EQUALIZED BY DEPARTMENT OF TAXATION, Tax including State Homestead, State Tax on Non-Homestead, SPECIAL TAXES, TOTAL TAXES, PAID, WHEN PAID, Number of Receipt, March Settlement 1955, June Settlement 1955, November Settlement 1955, Collections to First Monday in January 1956, Delinquent on First Monday in January 1956, Total Delinquent Tax and Penalty, REMARKS.

133-29

Village of Sylvan, North Sylvan Park, Parlyon's Sylvan Park, and Allen's 1st Addition to Sylvan



Assessment Roll and Tax List of Real Property in the Town of Sylvan

Cass County, Minnesota, for Taxes for the Year 1954.

\*Indicate Type of Property: R-Residential, C-Commercial, I-Industrial, U-Utility, F-Farm

Table with columns: IN WHOSE NAME ASSESSED, TO WHOM TRANSFERRED, DESCRIPTION OF PROPERTY, TRUE AND FULL VALUATIONS, ASSESSED VALUATIONS, FINAL EQUALIZED VALUE, SOLD FOR TAXES, VALUATIONS BY SCHOOL DISTRICTS AS EQUALIZED BY DEPARTMENT OF TAXATION, Tax including State Homestead, State Tax on Non-Homestead, SPECIAL TAXES, TOTAL TAXES, PAID, WHEN PAID, Number of Receipt, March Settlement 1955, June Settlement 1955, Penalty, November Settlement 1955, Penalty, Collections to First Monday in January 1956, Penalty, Delinquent on First Monday in January 1956, Total Delinquent Tax and Penalty, REMARKS.

133-29

Village of Sylvan, North Sylvan, Earl Lyon's Sylvan Park, Earl Lyon's Sylvan Park, Earl Lyon's Sylvan Park, Earl Lyon's Sylvan Park



Assessment Roll and Tax List of Real Property in the Town of Sylvan

\*Indicate Type of Property: R-Residential, C-Commercial, I-Industrial, U-Utility, F-Farm

Cass County, Minnesota, for Taxes for the Year 1954.

Table with columns: IN WHOSE NAME ASSESSED, TO WHOM TRANSFERRED, DESCRIPTION OF PROPERTY, TRUE AND FULL VALUATIONS, ASSESSED VALUATIONS, VALUATIONS BY SCHOOL DISTRICTS AS EQUALIZED BY DEPARTMENT OF TAXATION, SOLD FOR TAXES, PAID, WHEN PAID, Number of Receipt, March Settlement 1955, June Settlement 1955, November Settlement 1955, Collections to First Monday in January 1956, Delinquent on First Monday in January 1956, Total Delinquent Tax and Penalty, REMARKS.

133-29

133-30 Village of Sylvan North Sylvan Burlington's Sylvan Park



Assessment Roll and Tax List of Real Property in the Town of Sylvan, Cass County, Minnesota, for Taxes for the Year 1954.

Table with columns: IN WHOSE NAME ASSESSED, TO WHOM TRANSFERRED, SUBDIVISION, TRUE AND FULL VALUATIONS, ASSESSED VALUATIONS, VALUATIONS BY SCHOOL DISTRICTS AS EQUALIZED BY DEPARTMENT OF TAXATION, SOLD FOR TAXES, PAID, WHEN PAID, March Settlement 1955, June Settlement 1955, November Settlement 1955, Collections to First Monday in January 1956, Delinquent on First Monday in January 1956, Total Delinquent Tax and Penalty, REMARKS.

All that part of NE 1/4 of NE 1/4 Sec. 17-133-29, lying above 1186' contour line running across said tract, which is 1186' above the sea level elevation as established by the Mississippi River Commission, being approximately 20 acres in the Northern Pacific Right of way, and a certain one acre tract owned and occupied by school District #1 of Cass County and excepting the South 15 rods of the E 1/2 of NE 1/4 of NE 1/4

John A. Miller
Minnesota Power & Light Co.
" " "
" " "
Homo, Alvin & Emily J. Jindall
Cuyuna Range Power Co.
Martin J. & Bertha A. Phillips
Guy G. & Mabel Smith
W. H. & Inez Palmer
Minnesota Power & Light Co.
W. H. & Inez Palmer
State of Minnesota
Minnesota Power & Light Co.
" " "
J. Cunningham
Minnesota Power & Light Co.
" " "
" " "
" " "

52732
4620 2530 7150 416 1690 2106

#225 = 416
300 = 1690
525 = 2106
42418

PAID WHEN PAID
2nd Half Paid OCT 19 1955
1st Half Paid MAY 31 1955
PAID IN FULL OCT 19 1955
PAID IN FULL MAY 31 1955
PAID IN FULL APR 29 1955
PAID IN FULL MAY 31 1955
PAID IN FULL JUL 5 - 1955
PAID IN FULL MAY 31 1955
PAID IN FULL MAY 31 1955

4152 Pd QR# 27766 1-6-56

133-29
Village of Sylvan
North Sylvan
Garyton's Sylvan Park
Edmund Allen's 1st







Assessment Roll and Tax List of Real Property in the Town of Sylvan

\*Indicate Type of Property: R-Residential, C-Commercial, I-Industrial, U-Utility, F-Farm

IN WHOSE NAME ASSESSED	TO WHOM TRANSFERRED	DESCRIPTION OF PROPERTY				No. School District	Indicate Homestead Yes or No	Indicate Agricultural Yes or No	Indicate Type of Property	TRUE AND FULL VALUATIONS					ASSESSED VALUATIONS						FINAL EQUALIZED VALUE	
		SUBDIVISION	Sec. or Lot	Town or Block	Rng					Number of Acres of Land	LAND Exclusive of Structures and Improvements	BUILDINGS and Other Structures	MACHINERY Permanently Attached to Real Estate	TOTAL True and Full Value	RURAL		ALL OTHER		MACHINERY Permanently Attached to Real Estate	TOTAL ASSESSED VALUE		Total Assessed Value as Equalized by the Board of Review
															Acres	100ths	Homestead Up to \$4,000 20%	Over \$4,000 and Non-Homestead 33 1/3%				
Minnesota Power & Light Co.	Ray Carmichael	1 20 acs of NE 1/4 of NE 1/4	17	133	29	20	15	No	T		180					180	60	60	60			
		2 1/4 acs of NW 1/4 of NE 1/4				25		No	L		12					12	4	4	4			
		3 SW 1/4 of NE 1/4																				
		4 SE 1/4 of NE 1/4																				
Hans R. & Emily J. Lindall		5 5.15 acs of E 1/2 of NE 1/4 of NE 1/4				375		Yes	L	1	50	75				125	25	25	25			
Harry Seckler		6 20 acs of NE 1/4 of NW 1/4 less 12.4 acs of NE 1/4				760		No	R		60	325				385	77	77	77			
		7 NW 1/4 of NW 1/4																				
		8 SW 1/4 of NW 1/4																				
		9 SE 1/4 of NW 1/4																				
State of Minnesota		10 1 acs of NW 1/4 of NE 1/4																				
		11 NE 1/4 of SW 1/4																				
		12 NW 1/4 of SW 1/4																				
		13 SW 1/4 of SW 1/4																				
		14 SE 1/4 of SW 1/4																				
Gull River Cemetery as in		15 202' x 226' of SW 1/4 of NW 1/4 Exempt																				
		16 NE 1/4 of SE 1/4																				
		17 NW 1/4 of SE 1/4																				
		18 SW 1/4 of SE 1/4																				
		19 SE 1/4 of SE 1/4																				
		20				3160					302	400				702	102	64	166			

Cass County, Minnesota, for Taxes for the Year 1954.

SOLD FOR TAXES	VALUATIONS BY SCHOOL DISTRICTS AS EQUALIZED BY DEPARTMENT OF TAXATION						Tax including State Homestead	State Tax on Non-Homestead	SPECIAL TAXES	TOTAL TAXES	PAID	WHEN PAID	Number of Receipt	March Settlement 1955	June Settlement 1955	Penalty	November Settlement 1955	Collections to First Monday in January 1956	Penalty	Delinquent on First Monday in January 1956	Total Delinquent Tax and Penalty	REMARKS
	District No.	District No.	District No.	District No.	District No.	District No.																
	Rate	Rate	Rate	Rate	Rate	Rate																
1							11.72	32		12.04	1	PAID IN FULL OCT 19 1955										
2							78	22		80	2	PAID IN FULL MAY 31 1955										
5							5.50			5.50	5	PAID IN FULL OCT 19 1955										
6							15.02			15.02	6	PAID IN FULL MAY 31 1955										
20							5.50	34		33.36												

$$\begin{matrix} 47 & - & 25 & = & 102 \\ 64 & - & & = & 64 \\ \hline 141 & - & 25 & = & 166 \end{matrix}$$

Village of Sylvan  
 North Sylvan  
 133-30  
 Gull River's Sylvan Park  
 John A. Allen's 1st  
 Addition to Sylvan







Assessment Roll and Tax List of Real Property in the Town of Sylvan of Sylvan County, Minnesota  
\*Indicate Type of Property: R-Residential, C-Commercial, I-Industrial, U-Utility, F-Farm

Table with columns: IN WHOSE NAME ASSESSED, TO WHOM TRANSFERRED, DESCRIPTION OF PROPERTY, TRUE AND FULL VALUATIONS, ASSESSED VALUATIONS, FINAL EQUALIZED VALUE. Includes handwritten entries for Minnesota Power & Light Co., Roy G. & Eva L. Thompson, J. F. & Ellen J. Marlow, C. A. & Vera S. Stanley, Clara M. & Charles V. McKinney Sr.

Cass County, Minnesota, for Taxes for the Year 1954.

Table with columns: SOLD FOR TAXES, VALUATIONS BY SCHOOL DISTRICTS AS EQUALIZED BY DEPARTMENT OF TAXATION, Tax including State Homestead, State Tax on Non-Homestead, SPECIAL TAXES, TOTAL TAXES, PAID, WHEN PAID, Number of Receipt, March Settlement 1955, June Settlement 1955, November Settlement 1955, Collections to First Monday in January 1956, Delinquent on First Monday in January 1956, Total Delinquent Tax and Penalty, REMARKS. Includes handwritten notes like 'PAID IN FULL' and '10454'.

Page #12 deb+

Village of Sylvan, North Sylvan, Grandon's Sylvan Park, Grand & Allen's Lot, Add'l. to Sylvan









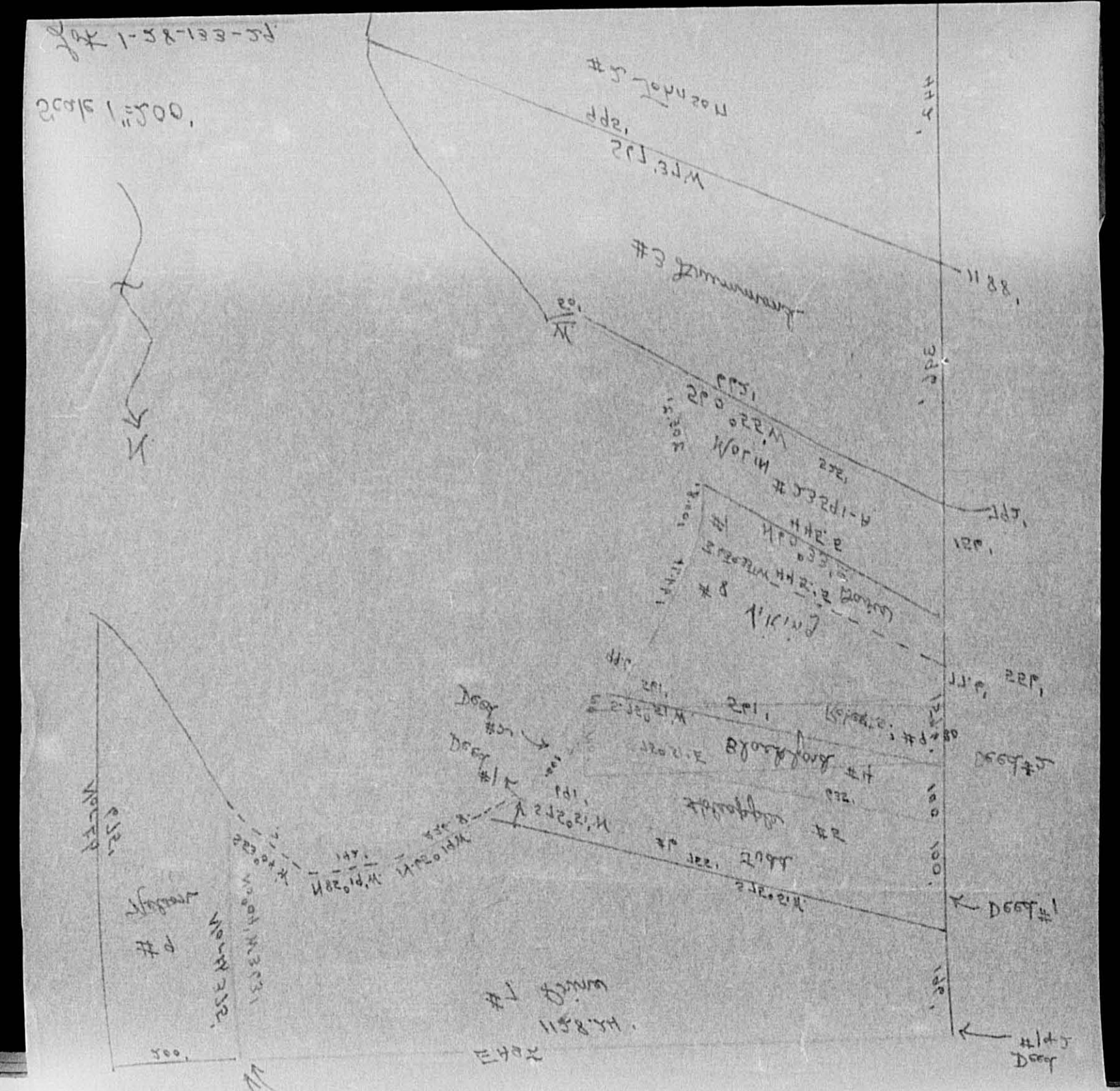






Assessment Roll and Tax List of Real Property in the Town of Sylvan, Cass County, Minnesota, for Taxes for the Year 1954.

Table with columns: IN WHOSE NAME ASSESSED, TO WHOM TRANSFERRED, DESCRIPTION OF PROPERTY, TRUE AND FULL VALUATIONS, ASSESSED VALUATIONS, FINAL EQUALIZED VALUE.



Cass County, Minnesota, for Taxes for the Year 1954.

Table with columns: VALUATIONS BY SCHOOL DISTRICTS AS EQUALIZED BY DEPARTMENT OF TAXATION, TAXES, PAID, WHEN PAID, Number of Receipt, March Settlement 1955, June Settlement 1955, November Settlement 1955, Collections to First Monday in January 1956, Delinquent on First Monday in January 1956, Total Delinquent Tax and Penalty.











































Assessment Roll and Tax List of Real Property in the Town of Sylvan,  
\*Indicate Type of Property: R-Residential, C-Commercial, I-Industrial, U-Utility, F-Farm

IN WHOSE NAME ASSESSED	TO WHOM TRANSFERRED	DESCRIPTION OF PROPERTY			No. School District	Indicate Homestead Yes or No	Indicate Agricultural Yes or No	Indicate Type of Property	TRUE AND FULL VALUATIONS				ASSESSED VALUATIONS					FINAL EQUALIZED VALUE			
		SUBDIVISION	Sec. or Lot	Town or Block					Number of Acres of Land	LAND Exclusive of Structures and Improvements	BUILDINGS and Other Structures	MACHINERY Permanently Attached to Real Estate	TOTAL True and Full Value	RURAL		ALL OTHER			MACHINERY Permanently Attached to Real Estate	TOTAL ASSESSED VALUE	Total Assessed Value as Equalized by the Board of Review
														Acres	100ths	Homestead Up to \$4,000 20%	Over \$4,000 and Non-Homestead 33 1/3%				
Orville F. & Rosie M. Ruckdaschel		NE 1/4 of NW 1/4	3	13330	3884	No	F	231					77		77						
"	"	NW 1/4 of NE 1/4			3850	"	F	210					70		70						
State of Minnesota		SW 1/4 of NE 1/4																			
State of Minnesota		SE 1/4 of NE 1/4																			
Orville F. & Rosie M. Ruckdaschel		NE 1/4 of NW 1/4			3814	"	F	228					76		76						
"	"	NW 1/4 of NW 1/4			3798	"	F	216					72		72						
"	"	SW 1/4 of NW 1/4			40	"	F	371	115				162		162						
"	"	SE 1/4 of NW 1/4			40	"	F	201					67		67						
Frank Swanson	State of Minnesota	NE 1/4 of SW 1/4			40	"	F	105					35		35						
"	State of Minnesota	NW 1/4 of SW 1/4			40	"	F	192					64		64						
Leslie E. & Rose M. Pietz		SW 1/4 of SW 1/4			40	40	F	280	550				166		166						
"	"	SE 1/4 of SW 1/4			40	"	F	120					24		24						
State of Minnesota		NE 1/4 of SE 1/4																			
State of Minnesota		NW 1/4 of SE 1/4																			
State of Minnesota		SW 1/4 of SE 1/4																			
State of Minnesota		SE 1/4 of SE 1/4																			
					393 26			2154	665				2819	190	628		813				

Cass County, Minnesota, for Taxes for the Year 1954.

SOLD FOR TAXES	VALUATIONS BY SCHOOL DISTRICTS AS EQUALIZED BY DEPARTMENT OF TAXATION						Tax Including State Homestead	State Tax on Non-Homestead	SPECIAL TAXES	TOTAL TAXES	PAID	WHEN PAID	Number of Receipt	March Settlement 1955	June Settlement 1955	Penalty	November Settlement 1955	Penalty	Collections to First Monday in January 1956	Penalty	Delinquent on First Monday in January 1956	Total Delinquent Tax and Penalty	REMARKS	
	District No.	District No.	District No.	District No.	District No.	District No.																		
	Rate	Rate	Rate	Rate	Rate	Rate																		
1							1502	40		1542														
2							1366	36		1402														
3																								
4																								
5																								
6							1484	40		1524														
7							1406	38		1444														
8							3162	84		3246														
9							1308	34		1342														
10																								
11							684	18		702														7.02 Cancelled
12							1250	34		1284														12.84 "
13							3240			3240														1st Half Paid MAY 31 1955 2nd Half Paid OCT 25 1955
14							468			468														1st Half Paid MAY 31 1955 2nd Half Paid OCT 25 1955
15																								
16																								
17																								
18																								
19																								
20							15870	324		16194														#190 423 913

Village of Sylvan  
North Sylvan  
Gulyon's Sylvan Park  
Edmund Allen's 1st Addition to Sylvan



Assessment Roll and Tax List of Real Property in the Town of Sylvan

\*Indicate Type of Property: R-Residential, C-Commercial, I-Industrial, U-Utility, F-Farm

Form SCD (54) MILLER-DAVIS COMPANY, MINNEAPOLIS

IN WHOSE NAME ASSESSED	TO WHOM TRANSFERRED	DESCRIPTION OF PROPERTY				TRUE AND FULL VALUATIONS										FINAL EQUALIZED VALUE									
		SUBDIVISION	Sec. of Lot	Town or Block	Ring	Number of Acres of Land	No. School District	Indicate Homestead Yes or No	Indicate Agricultural Yes or No	Indicate Type of Property	LAND EXCLUSIVE OF STRUCTURES AND IMPROVEMENTS			BUILDINGS AND OTHER STRUCTURES			MACHINERY Permanently Attached to Real Estate	TOTAL TRU & FULL VALUE	RURAL		ALL OTHER		TOTAL ASSESSED VALUE	Total Assessed Value as Equalized by the Board of Review	
											Dollars	Dollars	Dollars	Dollars	Dollars				Dollars	Dollars	Dollars	Dollars			Dollars
Allen & Ethel Rogers		NE 1/4 of NE 1/4 Lot 1	4	133.30		37.60	70	F		168									56			56			
Donald R. Farmer		NW 1/4 of NE 1/4 Lot 2				37.59	"	T		111									37			37			
Allen & Ethel Rogers		SW 1/4 of NE 1/4				40	"	F		120									40			40			
"	"	SE 1/4 of NE 1/4				40	"	F		210									70			70			
Thos. L. & Mae L. Harn		S 115' of N 530' of Lot 4				1	"	L		45	300								115			115			
Donald R. Farmer		NE 1/4 of NW 1/4 Lot 3				37.58	"	T		147									49			49			
Ruffin H. & Alice B. Brown		S 200' of N 300' & S 170' of N 200' of Lot 4				1360	"	L		102	300								134			134			
Donald R. Farmer		Lot 5 less S. 660'				1850	"	T		126									42			42			
"	"	SE 1/4 of NW 1/4				40	"	T		120									40			40			
Helen A. Farmer		S. 660' of Lot 5				20	"	L		140	220								120			120			
Allen E. & Ethel E. Rogers		NE 1/4 of SW 1/4				40	"	T		159									53			53			
"	"	NW 1/4 of SW 1/4				40	"	T		159									53			53			
Harold A. Darsney		SW 1/4 of SW 1/4				40	"	T		120									40			40			
Allen E. & Ethel E. Rogers		SE 1/4 of SW 1/4				40	"	T		199	335								178			178			
W. R. & Clara E. Mc Guire		N. 100' of Lot 4				110	"	L		45									15			15			
Leslie E. & Rose M. Fietz		NE 1/4 of SE 1/4				40	400	F		120									24			24			
Allen & Ethel Rogers		NW 1/4 of SE 1/4				40	70	F		228									76			76			
Allen E. & Ethel E. Rogers		SW 1/4 of SE 1/4				40	"	F		345									115			115			
Leslie E. & Rose M. Fietz		SE 1/4 of SE 1/4				40	400	F		430									86			86			
Beryl L. Mc Clay		S. 115' of N. 415' of Lot 4				160	70	L		51	195								82			82			
						107.57				3145	1350								1495			1495			

Cass County, Minnesota, for Taxes for the Year 1954.

SOLD FOR TAXES	VALUATIONS BY SCHOOL DISTRICTS AS EQUALIZED BY DEPARTMENT OF TAXATION						Tax including State Homestead	State Tax on Non-Homestead	SPECIAL TAXES	TOTAL TAXES	PAID	WHEN PAID	Number of Receipt	March Settlement 1955	June Settlement 1955	Penalty	November Settlement 1955	Penalty	Collections to First Monday in January 1956	Penalty	Delinquent on First Monday in January 1956	Total Delinquent Tax and Penalty	REMARKS	
	District No.	District No.	District No.	District No.	District No.	District No.																		
	Rate	Rate	Rate	Rate	Rate	Rate																		
1							10.94	30		11.24	1													
2							722	20		742	2	PAID IN FULL	MAY 31 1955	9123										
3							780	20		800	3													
4							1366	36		1402	4													
5							2244	60		2304	5	PAID IN FULL	FEB 28 1955	2974										
6							49	26		982	6	PAID IN FULL	MAY 31 1955	9123										
7							2616	70		2686	7	PAID IN FULL	JUL 15 1955	7565										
8							820	22		842	8	PAID IN FULL	MAY 31 1955	9123										
9							40	20		800	9	PAID IN FULL	MAY 31 1955	9123										
10							2342	62		2404	10	1st Half Paid	MAY 31 1955	9123										
11							1034	28		1062	11	PAID IN FULL	NOV 30 1955	16041										
12							1034	28		1062	12	PAID IN FULL	NOV 30 1955	16041										
13							780	20		800	13													
14							3474	92		3566	14	PAID IN FULL	NOV 30 1955	16041										
15							292	08		300	15	2nd Half Paid	OCT 23 1955	14482										
16							468			468	16	1st Half Paid	MAY 31 1955	6866										
17							1484	40		1524	17													
18							2244	60		2304	18	PAID IN FULL	NOV 30 1955	16041										
19							1678			1678	19	1st Half Paid	MAY 31 1955	6866										
20							1600	42		1642	20	2nd Half Paid	OCT 25 1955	14579										
							27808	684		28492														

Volume of Sylvan  
North Sylvan  
Part of Sylvan  
Sylvan Park  
John  
Edward Allen's 1st  
Add'n to Sylvan







Assessment Roll and Tax List of Real Property in the Town of Sylvan

Indicate Type of Property: R-Residential, C-Commercial, I-Industrial, U-Utility, F-Farm

Form 502 (5-1) MILLER-BAYNE COMPANY, MINNEAPOLIS

DESCRIPTION OF PROPERTY

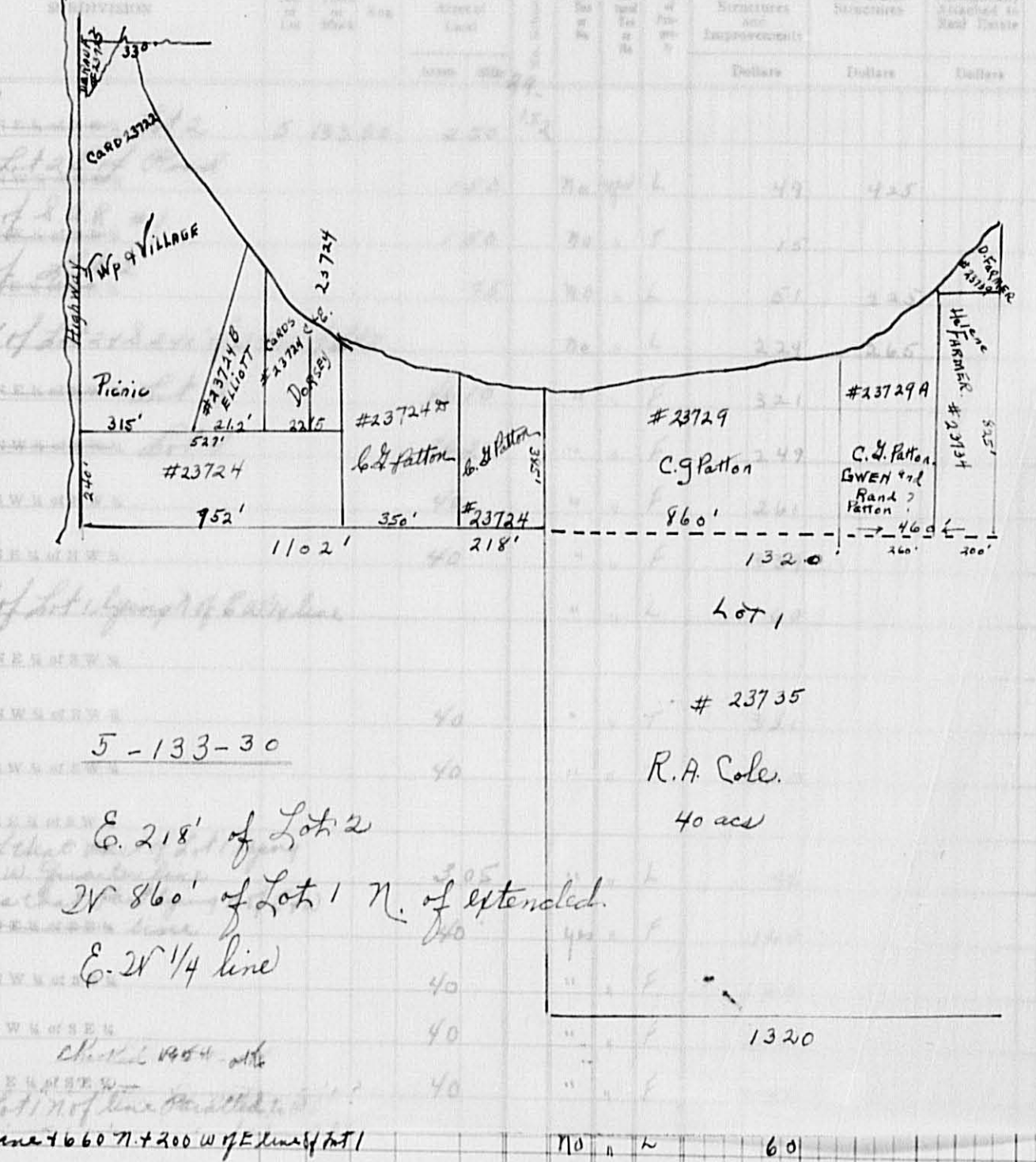
TRUE AND FULL VALUATION

ASSESSED VALUATIONS

Table with columns: TOTAL True and Full Value, RURAL (Homestead, Over \$4,000), ALL OTHER (Homestead, Over \$4,000), MACHINERY, TOTAL ASSESSED VALUE, Total Assessed Value as Equalized by the Board of Review, FINAL EQUALIZED VALUE.

IN WHOSE NAME ASSESSED TO WHOM TRANSFERRED

Sup. of Sylvan, May Fairview & Village of Pillager, Earl & Edith M. Elliott, Harriet E. Herauf, Edward J. Hersey, Carrall G. & Gwendol Patton, Harriet E. Herauf, Carrall G. & Gwendol Patton, State of Minnesota, Paul O. Berglund, N.W. Paper Co., State of Minnesota, Helen A. Farmer, Ralph & Cora Cole, Donald R. Farmer



411 65, 300.7, 915, 392.2, 131, 108.9, 1220

Cass County, Minnesota, for Taxes for the Year 1954.

Table with columns: SOLD FOR TAXES, VALUATIONS BY SCHOOL DISTRICTS AS EQUALIZED BY DEPARTMENT OF TAXATION, Tax Including State Homestead, State Tax on Non-Homestead, SPECIAL TAXES, TOTAL TAXES, PAID, WHEN PAID, Number of Receipt, March Settlement 1955, June Settlement 1955, Penalty, November Settlement 1955, Penalty, Collections to First Monday in January 1956, Delinquent on First Monday in January 1956, Total Delinquent Tax and Penalty, REMARKS.

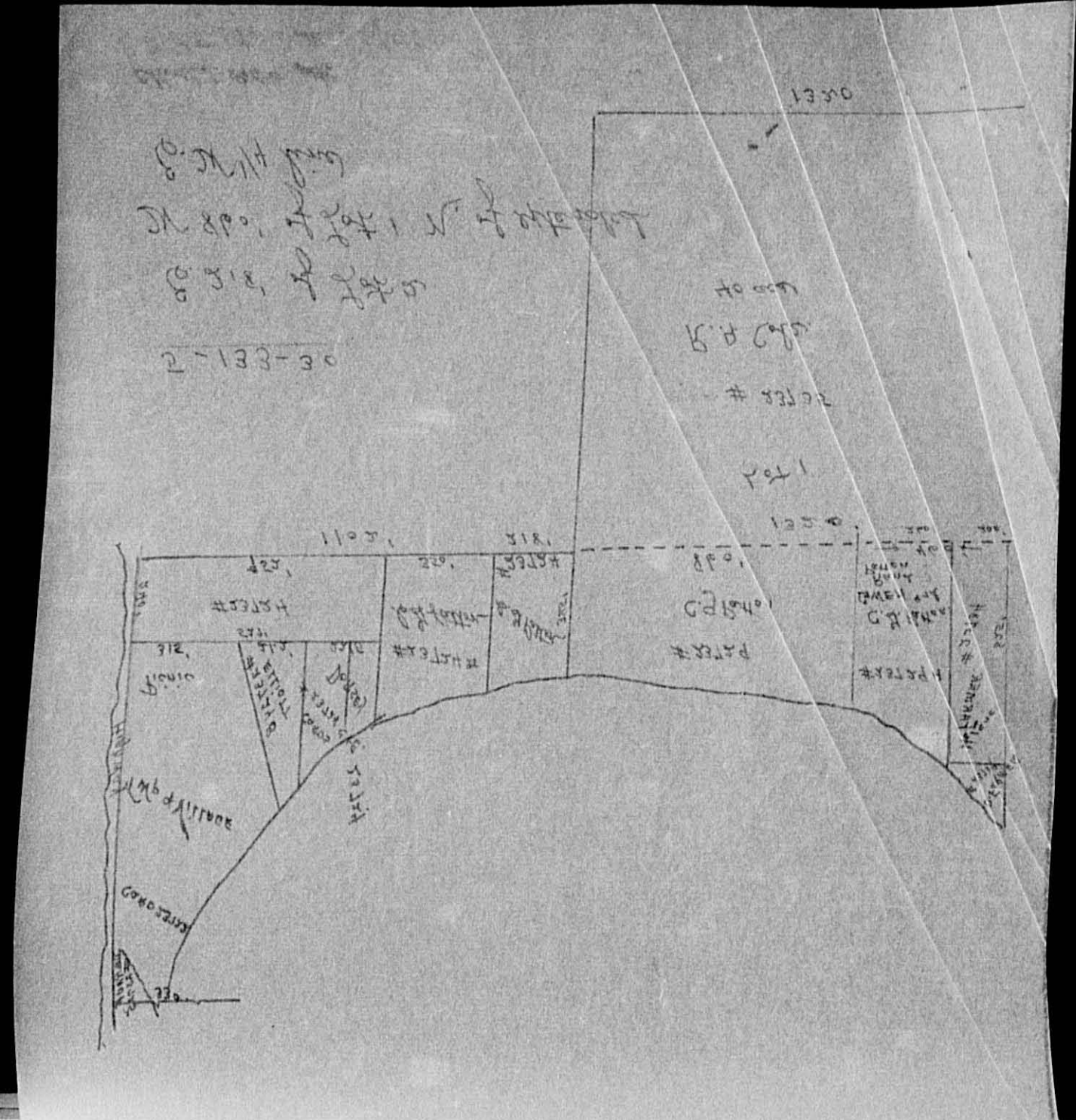
Main tax table with rows 1-20, containing assessed values, taxes, and payment status (e.g., PAID IN FULL MAY 31 1955).

Village of Sylvan, North Sylvan, Earl Lyon's Sylvan Park, and other vertical text on the right edge.



Assessment Roll and Tax List of Real Property in the Town of Sylvan, Cass County, Minnesota, for Taxes for the Year 1954.

Form SCID (54) 1953-54



\*Indicate Type of Property: R-Residential, C-Commercial, I-Industrial, U-Utility, F-Farm

Table with columns: IN WHOSE NAME ASSESSED, TO WHOM TRANSFERRED, DESCRIPTION OF PROPERTY, TRUE AND FULL VALUATIONS, ASSESSED VALUATIONS (RURAL, ALL OTHER), TOTAL ASSESSED VALUE, FINAL EQUALIZED VALUE.

Cass County, Minnesota, for Taxes for the Year 1954.

Table with columns: VALUATIONS BY SCHOOL DISTRICTS AS EQUALIZED BY DEPARTMENT OF TAXATION, TAXES, PAID, WHEN PAID, SPECIAL TAXES, TOTAL TAXES, and REMARKS.

133-30

Vertical text on the right edge of the page, including 'TOWN OF SYLVAN' and 'CASS COUNTY, MINN.'.







Assessment Roll and Tax List of Real Property in the Town of Sylvan,

\*Indicate Type of Property: R-Residential, C-Commercial, I-Industrial, U-Utility, F-Farm

Form SCD (54) WALKER-BAYNE COMPANY, MINNEAPOLIS

IN WHOSE NAME ASSESSED	TO WHOM TRANSFERRED	DESCRIPTION OF PROPERTY				No. School District	Indicate Home-Stead Yes or No	Indicate Agricultural Yes or No	Indicate Type of Property	TRUE AND FULL VALUATIONS					ASSESSED VALUATIONS					FINAL EQUALIZED VALUE	
		SUBDIVISION	Sec. or Lot	Town or Block	Rng					Number of Acres of Land	LAND Exclusive of Structures and Improvements	BUILDINGS and Other Structures	MACHINERY Permanently Attached to Real Estate	TOTAL True and Full Value	RURAL		ALL OTHER				Total Assessed Value as Equalized by the Board of Review
															Acres	100ths	Dollars	Dollars	Dollars		
Frank L. Culbert	Geo. W. Grace	NE 1/4 of NE 1/4	6	133	30	37.76	Yes	F	190	160	250	70		70							
State of Minnesota (cont. to George N. Wilson)		NW 1/4 of NE 1/4	2			37.25	No	F	159		159	53		53							
Delbert Mann	Geo. W. Grace	SW 1/4 of NE 1/4	3			39.50	Yes	F	255		255	51		51							
Delbert S. Mann	"	SE 1/4 of NE 1/4	4			40	"	F	270		270	54		54							
Geo. & Ruth E. Hix		NE 1/4 of NW 1/4	6			61	"	F	280		280	56		56							
Geo. Hix		NW 1/4 of NW 1/4	7				"	F													
Geo. Hix		SW 1/4 of NW 1/4	8			49	"	F	295		295	59		59							
Delbert S. Mann	Geo. W. & Ruth E. Hix	SE 1/4 of NW 1/4	9			35.50	"	F	120		120	24		24							
Geo. Hix		NE 1/4 of SW 1/4	11			40	"	F	285	120	405	81		81							
Delbert S. Mann	Geo. W. & Ruth E. Hix	NW 1/4 of SW 1/4	12			47.39	"	F	260		260	52		52							
H. L. Stuntz	George W. & Ruth E. Hix	SW 1/4 of SW 1/4	13			45.53	"	T	180		180	36		36							
"	"	SE 1/4 of SW 1/4	14			40	"	T	160		160	32		32							
State of Minnesota		NE 1/4 of SE 1/4	16				"	F													
Jack Barnett		NW 1/4 of SE 1/4	17			40	"	F	215	100	315	63		63							
George N. Wilson		SW 1/4 of SE 1/4	18			40	"	F	230		230	46		46							
Arno & Clara L. Passler		SE 1/4 of SE 1/4	19			40	"	F	220		220	44		44							
			20																		
						592.93				3119	386	3499	668	53	721						

Cass County, Minnesota, for Taxes for the Year 1954.

SOLD FOR TAXES	VALUATIONS BY SCHOOL DISTRICTS AS EQUALIZED BY DEPARTMENT OF TAXATION						Tax including State Homestead	State Tax on Non-Homestead	SPECIAL TAXES	TOTAL TAXES	PAID	WHEN PAID	Number of Receipt	March Settlement 1955	June Settlement 1955	Penalty	November Settlement 1955	Penalty	Collections to First Monday in January 1956	Penalty	Delinquent on First Monday in January 1956	Total Delinquent Tax and Penalty	REMARKS
	District No.	District No.	District No.	District No.	District No.	District No.																	
	Rate	Rate	Rate	Rate	Rate	Rate																	
1	4	70					13.66		13.66	1	PAID IN FULL	DEC 5 1955	16067									1366 109	
2		53					10.34	28	10.62	2	PAID IN FULL	MAY 31 1955	6705									-1062	
3	4	51					9.96		9.96	3	PAID IN FULL	DEC 5 1955	16067									996 80	
4	4	54					10.54		10.54	4	PAID IN FULL	DEC 5 1955	16067									1054 84	
5										5													
6		56					10.94		10.94	6	PAID IN FULL	MAY 31 1955	9128									-1094	
7										7													
8		59					11.52		11.52	8	PAID IN FULL	MAY 31 1955	9128									-1152	
9		24					4.68		4.68	9	PAID IN FULL	DEC 5 1955	16067									468 374	
10										10													
11		81					15.80		15.80	11	PAID IN FULL	MAY 31 1955	9128									-1580	
12		52					10.14		10.14	12	PAID IN FULL	DEC 5 1955	16067									1014 81	
13		36					7.02		7.02	13	PAID IN FULL	MAY 31 1955	9128									-702	
14		32					6.24		6.24	14	PAID IN FULL	MAY 31 1955	9128									-624	
15										15													
16										16													
17		63					12.30		12.30	17	PAID IN FULL	MAY 31 1955	6705									-1230	
18		46					8.98		8.98	18	PAID IN FULL	MAY 31 1955	6705									-898	
19		44					8.58		8.58	19	PAID IN FULL	MAY 31 1955	9130									-858	
20										20													
						72.1	140.70	28	140.98													9260	4098

Village of Sylvan  
North Sylvan  
Cass County, Minnesota  
John  
Alten's 1st  
Addn to Sylvan



























Assessment Roll and Tax List of Real Property in the Town of Sylvan,  
\*Indicate Type of Property: R-Residential, C-Commercial, I-Industrial, U-Utility, F-Farm

IN WHOSE NAME ASSESSED	TO WHOM TRANSFERRED	DESCRIPTION OF PROPERTY				No. School District	Indicate Homestead Yes or No	Indicate Agricultural Yes or No	* Indicate Type of Property	TRUE AND FULL VALUATIONS					ASSESSED VALUATIONS					FINAL EQUALIZED VALUE		
		SUBDIVISION	Sec. or Lot	Town or Block	Rng					Number of Acres of Land	LAND Exclusive of Structures and Improvements	BUILDINGS and Other Structures	MACHINERY Permanently Attached to Real Estate	TOTAL True and Full Value	RURAL		ALL OTHER		MACHINERY Permanently Attached to Real Estate		TOTAL ASSESSED VALUE	Total Assessed Value as Equalized by the Board of Review
															Acres	100ths	Dollars	Dollars				
<i>Mike Ondris &amp; Frances C. Ondris</i>	<i>Wife &amp; Joan Larson</i>	<i>all of NE 1/4 of Rg.</i>	13	133	30	88	15	40	F	860					860	172	172					
		NW 1/4 of NE 1/4																				
		SW 1/4 of NE 1/4																				
<i>Mrs Annie C. Silver</i>		<i>all of NE 1/4 of Rg</i>				52	no		F	519					519	173	173					
<i>Mike Ondris &amp; Frances C. Ondris</i>	<i>Wife &amp; Joan Larson</i>	<i>NE 1/4 of NW 1/4</i>				40	40		F	120	500				620	124	124					
"	"	<i>less W. 483'</i>				40	"		F	240					240	48	48					
"	"	<i>all 1/2 of NW 1/4 n of Rg less school + plat</i>				52.2	"		F	35					35	7	7					
<i>Mrs Annie C. Silver</i>		<i>all 1/2 of NW 1/4 of Rg + plat</i>				25	no		F	249					249	83	83					
<i>State of Minnesota</i>		<i>W. 483' of S. 600' of NW 1/4 of NW 1/4</i>				621																
<i>Mrs Annie C. Silver</i>		NE 1/4 of SW 1/4				40	no		F	399					399	133	133					
<i>Geo M. &amp; Bernice V. Wilder</i>		<i>also all SW 1/4 of NW 1/4 of Rg</i>				91.50	40		F	365					365	73	73					
<i>Mrs Annie C. Silver</i>		SE 1/4 of SW 1/4				40	no		F	279					279	93	93					
"	"	NE 1/4 of SE 1/4				40	"		F	399					399	133	133					
"	"	NW 1/4 of SE 1/4				40	"		F	399					399	133	133					
"	"	SW 1/4 of SE 1/4				40	"		F	279					279	93	93					
<i>Geo M. &amp; Bernice V. Wilder</i>		<i>E of Sylvan sup 74' width n + 116' on S. end 366' long of Rg</i>				62	40		F	10					10	2	2					
		<i>SW 1/4 of NW 1/4</i>				58.34				4552	500				5052	426	974					

Cass County, Minnesota, for Taxes for the Year 1954.

SOLD FOR TAXES	EVALUATIONS BY SCHOOL DISTRICTS AS EQUALIZED BY DEPARTMENT OF TAXATION						Tax including State Homestead	State Tax on Non-Homestead	SPECIAL TAXES	TOTAL TAXES	PAID	WHEN PAID	Number of Receipt	March Settlement 1955	June Settlement 1955	Penalty	November Settlement 1955	Penalty	Collections to First Monday in January 1956	Penalty	Delinquent on First Monday in January 1956	Total Delinquent Tax and Penalty	REMARKS
	District No.	District No.	District No.	District No.	District No.	District No.																	
	Rate	Rate	Rate	Rate	Rate	Rate																	
	172						33.58			33.58	1	PAID IN FULL APR 26 1955	5201		-3359								
											2												
											3												
SOLD FOR TAXES	173						33.76	90		34.66	4	2nd Half Paid OCT 31 1955 1st Half Paid MAY 31 1955	15594 9137		-1733		1733						
											5												
	124						24.20			24.20	6	PAID IN FULL APR 26 1955			-2420								
	48						9.36			9.36	7	PAID IN FULL APR 26 1955	5800		-936								
	7						1.36			1.36	8	PAID IN FULL APR 26 1955			-136								
SOLD FOR TAXES	83						16.20	44		16.64	9	2nd Half Paid OCT 31 1955 1st Half Paid MAY 31 1955	10599 9137		-832		832						
											10												
SOLD FOR TAXES	133						25.96	70		26.66	11	2nd Half Paid OCT 31 1955 1st Half Paid MAY 31 1955	10599 9137		-1333		1333						
	73						14.24			14.24	12	PAID IN FULL MAY 31 1955	6742		-1424								
											13												
SOLD FOR TAXES	93						18.16	48		18.64	14	2nd Half Paid OCT 31 1955 1st Half Paid MAY 31 1955	10599 9137		-932		932						
											15												
SOLD FOR TAXES	133						25.96	70		26.66	16	2nd Half Paid OCT 31 1955 1st Half Paid MAY 31 1955			-1333		1333						
SOLD FOR TAXES	133						25.96	70		26.66	17	2nd Half Paid OCT 31 1955 1st Half Paid MAY 31 1955			-1333		1333						
SOLD FOR TAXES	93						18.16	48		18.64	18	2nd Half Paid OCT 31 1955 1st Half Paid MAY 31 1955	10599 9137		-932		932						
SOLD FOR TAXES	133						25.96	70		26.66	19	2nd Half Paid OCT 31 1955 1st Half Paid MAY 31 1955			-1333		1333						
	2						40			40	20	PAID IN FULL MAY 31 1955	6742		-40								
	426						974			1400													
	273.26						510			278.36													

Village of Sylvan  
North Sylvan  
Gardner's Sylvan Park  
John  
Alford's Sylvan Park  
Address to Sylvan Park



Assessment Roll and Tax List of Real Property in the Town of Sylvan,  
\*Indicate Type of Property: R-Residential, C-Commercial, I-Industrial, U-Utility, F-Farm

Form SCD (51) MILLER-DAVIS COMPANY, MINNEAPOLIS

IN WHOSE NAME ASSESSED	TO WHOM TRANSFERRED	DESCRIPTION OF PROPERTY				No. School District	Indicate Homestead Yes or No	Indicate Agricultural Yes or No	Indicate Type of Property	TRUE AND FULL VALUATIONS					ASSESSED VALUATIONS					FINAL EQUALIZED VALUE		
		SUBDIVISION	Sec. or Lot	Town or Block	Rng.					Number of Acres of Land	LAND Exclusive of Structures and Improvements	BUILDINGS and Other Structures	MACHINERY Permanently Attached to Real Estate	TOTAL True and Full Value	RURAL		ALL OTHER		MACHINERY Permanently Attached to Real Estate		TOTAL ASSESSED VALUE	Total Assessed Value as Equalized by the Board of Review
															Acres	100ths	Homestead 20%	Over \$4,000 and Non-Homestead 33 1/3%				
John J. Parks		E. 533'	14	133	30	33.65	70	yes	F	99				99	33	33						
"		N.W. 1/4 of N.E. 1/4 less Ry.				33.44	"	"	F	183	99		282	94	94							
Ida Anderson		S.W. 1/4 of N.E. 1/4				34.32	400	"	F	250			250	50	50							
"		same cemetery				24.19	"	"	F	250			250	50	50							
State of Minnesota		S.E. 1/4 of N.E. 1/4 of Ry.																				
James + Johanna Jurnshell		N.E. 1/4 of N.W. 1/4 less Ry. Pt. way				31.06	70	"	F	339		113	339	113	113							
"		N.W. 1/4 of N.W. 1/4				32.23	"	"	F	66		22	66	22	22							
C. N. Sliter		Lot 2 less Ry				39.86	400	"	F	200		40	200	40	40							
"		Lot 1 less Ry				39.22	"	"	F	120		24	120	24	24							
State of Minnesota		S. 525' NE 533' 1/2 of N.E. 1/4 (6.03)																				
		N.E. 1/4 of S.W. 1/4																				
		N.W. 1/4 of S.W. 1/4																				
		S.W. 1/4 of S.W. 1/4																				
		S.E. 1/4 of S.W. 1/4																				
Clarence N. Sliter		Lot 1 less N. 46 rds				12.50	400	"	F	100		20	100	20	20							
Ida Anderson		N.E. 1/4 of S.E. 1/4				40	"	"	F	360	910		1270	254	254							
C. N. Sliter		N.W. 1/4 of S.E. 1/4 Lot 6				47.75	"	"	F	525		105	525	105	105							
"		S.W. 1/4 of S.E. 1/4																				
"		N. 46 rds of Lot 7				20.25	"	"	F	170	265		435	87	87							
						388.47				2662	1074		3936	630	562							

Cass County, Minnesota, for Taxes for the Year 1954.

SOLD FOR TAXES	VALUATIONS BY SCHOOL DISTRICTS AS EQUALIZED BY DEPARTMENT OF TAXATION						Tax including State Homestead	State Tax on Non-Homestead	SPECIAL TAXES	TOTAL TAXES	PAID	WHEN PAID	Number of Receipt	March Settlement 1955	June Settlement 1955	Penalty	November Settlement 1955	Penalty	Collections to First Monday in January 1956	Penalty	Delinquent on First Monday in January 1956	Total Delinquent Tax and Penalty	REMARKS
	District No.	District No.	District No.	District No.	District No.	District No.																	
	Rate	Rate	Rate	Rate	Rate	Rate																	
1							640	16	656	1	2nd Half Paid OCT 26 1955	14619											
2							1834	50	1884	2	1st Half Paid MAY 31 1955	7138		-328		328							
3							976		976	3	2nd Half Paid OCT 26 1955	14619											
4							976		976	4	1st Half Paid MAY 31 1955	7138		-942		942							
5										5	Balance Paid MAY 31 1955	4743											
6							2206	58	2264	6	2nd Half Paid OCT 26 1955	14619											
7							430	12	442	7	1st Half Paid MAY 31 1955	7138		-1132		1132							
8							780		780	8	2nd Half Paid OCT 26 1955	14619											
9							468		468	9	1st Half Paid MAY 31 1955	10711		-221		221							
10										10	PAID IN FULL MAY 31 1955			-780									
11										11													
12										12													
13										13													
14										14													
15							390		390	15	PAID IN FULL MAY 31 1955	10511		-390									
16							4958		4958	16	Balance Paid MAY 31 1955	9138		-2484									
17							2050		2050	17	1st Half Paid MAY 31 1955	4743		-2474									
18										18													
19							1698		1698	19	PAID IN FULL MAY 31 1955	10511		-2050									
20										20													
							17456	136	17592					14919		2623							

Village of Sylvan  
North Sylvan  
Garlyon's Sylvan Park  
John + Allean's 1st  
Address to Sylvan 21st







Assessment Roll and Tax List of Real Property in the Town of Sylvan, Minnesota

Form SCD (54) MILLER-DAY COMPANY, MINNEAPOLIS

Table with columns: IN WHOSE NAME ASSESSED, TO WHOM TRANSFERRED, DESCRIPTION OF PROPERTY, TRUE AND FULL VALUATIONS, ASSESSED VALUATIONS, FINAL EQUALIZED VALUE.

Cass County, Minnesota, for Taxes for the Year 1954.

Table with columns: SOLD FOR TAXES, VALUATIONS BY SCHOOL DISTRICTS AS EQUALIZED BY DEPARTMENT OF TAXATION, Tax including State Homestead, State Tax on Non-Homestead, SPECIAL TAXES, TOTAL TAXES, PAID, WHEN PAID, Number of Receipt, March Settlement 1955, June Settlement 1955, Penalty, November Settlement 1955, Collections to First Monday in January 1956, Delinquent on First Monday in January 1956, Total Delinquent Tax and Penalty, REMARKS.

133-29

Village of Sylvan, North Sylvan, Garyton's Sylvan Park, and other local addresses.







Assessment Roll and Tax List of Real Property in the Town of Sylvan

\*Indicate Type of Property: R-Residential, C-Commercial, I-Industrial, U-Utility, F-Farm

Form SCD (54) - WILCOX-BAYNE COMPANY, MINNEAPOLIS

Table with columns: IN WHOSE NAME ASSESSED, TO WHOM TRANSFERRED, DESCRIPTION OF PROPERTY, TRUE AND FULL VALUATIONS, ASSESSED VALUATIONS, FINAL EQUALIZED VALUE.

Cass County, Minnesota, for Taxes for the Year 1954.

Table with columns: VALUATIONS BY SCHOOL DISTRICTS AS EQUALIZED BY DEPARTMENT OF TAXATION, Tax including State Homestead, State Tax on Non-Homestead, SPECIAL TAXES, TOTAL TAXES, PAID, WHEN PAID, Number of Receipt, March Settlement, June Settlement, November Settlement, Collections to First Monday in January, Delinquent on First Monday in January, Total Delinquent Tax and Penalty, REMARKS.

133-29  
133-30

133-29  
133-30  
Village of Sylvan  
North Sylvan  
Garrison's Sylvan Park  
John  
Grand Allen's 1st  
Address to Sylvan Pa



Assessment Roll and Tax List of Real Property in the town of Sylvan,  
\*Indicate Type of Property: R-Residential, C-Commercial, I-Industrial, U-Utility, F-Farm

Form SCD-541 MILLER-DAY COMPANY, MINNEAPOLIS

IN WHOSE NAME ASSESSED	TO WHOM TRANSFERRED	DESCRIPTION OF PROPERTY				TRUE AND FULL VALUATIONS					ASSESSED VALUATIONS					FINAL EQUALIZED VALUE	
		SUBDIVISION	Sec. or Lot	Town or Block	Number of Acres of Land	LAND Exclusive of Structures and Improvements	BUILDINGS and Other Structures	MACHINERY Permanently Attached to Real Estate	TOTAL True and Full Value	RURAL		ALL OTHER		MACHINERY Permanently Attached to Real Estate	TOTAL ASSESSED VALUE		Total Assessed Value as Equalized by the Board of Review
										Acres	100ths	Homestead Up to \$4,000 20%	Over \$4,000 and Non-Homestead 33 1/3%				
St. Olaf College		NE 1/4 of NE 1/4 Sec 19	19	133	30	210			210		70			70			
Joe J. & Zella M. Shutt		NW 1/4 of NE 1/4 Sec 19			2742		320	485	97					97			
St. Olaf College		SW 1/4 of NE 1/4			40	240		240		80				80			
"		SE 1/4 of NE 1/4			40	399		399		133				133			
Minnesota Power & Light Co.		1.9 acs of NE 1/4 of NW 1/4 Sec 19			190	15		15		5				5			
Joe J. & Zella M. Shutt		NE 1/4 of NW 1/4 Sec 19			2557	155		155	31					31			
"		NW 1/4 of NW 1/4 Lot 1			3914	405		405	81					81			
St. Olaf College		SW 1/4 of NW 1/4 Lot 2			4445	309		309		103				103			
"		SE 1/4 of NW 1/4			40	279		279		93				93			
Minnesota Power & Light Co.		13.7 acs of NE 1/4 of SW 1/4			1370	153		153		51				51			
St. Olaf College		NE 1/4 of SW 1/4 right to min. front right			2225	171		171		57				57			
"		NW 1/4 of SW 1/4 Lot 3			5090	459		459		153				153			
"		SW 1/4 of SW 1/4 Lot 4			5279	405		405		135				135			
"		Lot 5 less to Anderson			865	75		75		25				25			
Minnesota Power & Light Co.		4.05 acs of NE 1/4 of SW 1/4			405	42		42		14				14			
St. Olaf College		NE 1/4 of SE 1/4 Lot 7			3250	321		321		107				107			
"		NW 1/4 of SE 1/4 Lot 6			3395	264		264		88				88			
"		SW 1/4 of SE 1/4															
"		SE 1/4 of SE 1/4															
Endre B. Anderson		18 acs of NE 1/4 of SW 1/4 + Lots			108	216	525	741		247				247			
					52507	4283	845	5128	209	1361				1570			

Cass County, Minnesota, for Taxes for the Year 1954.

SOLD FOR TAXES	VALUATIONS BY SCHOOL DISTRICTS AS EQUALIZED BY DEPARTMENT OF TAXATION						Tax including State Homestead	State Tax on Non-Homestead	SPECIAL TAXES	TOTAL TAXES	PAID	WHEN PAID	Number of Receipt	March Settlement 1955	June Settlement 1955	Penalty	November Settlement 1955	Penalty	Collections to First Monday in January 1956	Penalty	Delinquent on First Monday in January 1956	Total Delinquent Tax and Penalty	REMARKS
	District No.	District No.	District No.	District No.	District No.	District No.																	
	Rate	Rate	Rate	Rate	Rate	Rate																	
1						70	1366	36	1402	1	PAID IN FULL	MAY 31 1955	10524		-1402								
2						497	1894		1894	2	PAID IN FULL	MAY 31 1955	9147		-1894								
3						80	1562	42	1604	3	PAID IN FULL	MAY 31 1955	10524		-1604								
4						133	2596	70	2666	4	PAID IN FULL	MAY 31 1955	10524		-2666								
5						5	98	02	100	5	PAID IN FULL	MAY 31 1955	10457		-100								
6						431	606		606	6	PAID IN FULL	MAY 31 1955	9147		-606								
7						481	1580		1580	7	PAID IN FULL	MAY 31 1955	10524		-1580								
8						103	2010	54	2064	8	PAID IN FULL	MAY 31 1955	10524		-2064								
9						93	1816	48	1864	9	PAID IN FULL	MAY 31 1955	10524		-1864								
10						51	996	26	1022	10	PAID IN FULL	MAY 31 1955	10524		-511		511						
11						57	1120	30	1142	11	PAID IN FULL	MAY 31 1955	10524		-1142								
12						153	2986	80	3066	12	PAID IN FULL	MAY 31 1955	10524		-3066								
13						135	2634	70	2704	13	PAID IN FULL	MAY 31 1955	10524		-2704								
14						25	488	14	502	14	PAID IN FULL	MAY 31 1955	10524		-502								
15						14	274	08	282	15	PAID IN FULL	MAY 31 1955	10524		-282								
16						107	2088	56	2144	16	PAID IN FULL	MAY 31 1955	10524		-2144								
17						88	1764	46	1764	17	PAID IN FULL	MAY 31 1955	10524		-1764								
18										18													
19										19													
20						247	4820	128	4948	20	PAID IN FULL	MAY 31 1955	10524		-4948								
						209	30644	710	31354														

133-29  
133-30

Village of Sylvan  
North Sylvan  
Garrison's Sylvan Park  
Richmond & Allen's 1st  
Add'n to Sylvan



















Assessment Roll and Tax List of Real Property in the Town of Sylvan

\*Indicate Type of Property: R-Residential, C-Commercial, I-Industrial, U-Utility, F-Farm

IN WHOSE NAME ASSESSED	TO WHOM TRANSFERRED	DESCRIPTION OF PROPERTY				TRUE AND FULL VALUATIONS										FINAL EQUALIZED VALUE								
		SUBDIVISION	Sec. of Lot	Town or Block	Rng.	Number of Acres of Land	No. School District	Indicate Homesteaded Yes or No	Indicate Agricultural Yes or No	Indicate Type of Property	LAND Exclusive of Structures and Improvements		BUILDINGS and Other Structures	MACHINERY Permanently Attached to Real Estate	TOTAL True and Full Value		RURAL		ALL OTHER		MACHINERY Permanently Attached to Real Estate	TOTAL ASSESSED VALUE	Total Assessed Value as Equalized by the Board of Review	
											Dollars	Dollars	Dollars	Dollars	Dollars		Dollars	Dollars	Dollars	Dollars	Dollars	Dollars	Dollars	Dollars
Village of Sylvan																								
Martin & Lena Laftis			1	1			Yes	No	R		5			5			1					5	1	
"	"		2				"	"	R	25	240			265			53					53		
"	"		3				"	"	R	5				5			1					5	1	
"	"		4				"	"	R	5				5			1					5	1	
"	"		5				"	"	R	5				5			1					5	1	
"	"		6				"	"	R	5				5			1					5	1	
"	"		7				"	"	R	5				5			1					5	1	
"	"		8				"	"	R	5				5			1					5	1	
Jessie Britton	State of Minnesota		9				No	"	R	6				6			2					6	2	
"	State of Minnesota		10				"	"	R	6				6			2					6	2	
Jessie Britton			11				"	"	R	6				6			2					6	2	
"			12				"	"	R	6				6			2					6	2	
Chas. Johnson			13				"	"	R	6				6			2					6	2	
"			14				"	"	R	6				6			2					6	2	
"			15				"	"	R	6				6			2					6	2	
"			16				"	"	R	6				6			2					6	2	
"			17				"	"	R	6				6			2					6	2	
"			18				"	"	R	6				6			2					6	2	
"			19				"	"	R	6				6			2					6	2	
"			20				"	"	R	6				6			2					6	2	
										137	240			372	60	24					84			

Cass County, Minnesota, for Taxes for the Year 1954.

SOLD FOR TAXES	VALUATIONS BY SCHOOL DISTRICTS AS EQUALIZED BY DEPARTMENT OF TAXATION						Tax including State Homestead	State Tax on Non-Homestead	SPECIAL TAXES	TOTAL TAXES	PAID	WHEN PAID	Number of Receipt	March Settlement 1955	June Settlement 1955	Penalty 1955	November Settlement 1955	Penalty 1955	Collections to First Monday in January 1956	Penalty 1956	Delinquent on First Monday in January 1956	Total Delinquent Tax and Penalty	REMARKS
	District No.	District No.	District No.	District No.	District No.	District No.																	
	Rate	Rate	Rate	Rate	Rate	Rate																	
1	#1	#1	#1	#1	#1	#1	20		20	1	PAID IN FULL MAY 31 1955												
2	#1	#1	#1	#1	#1	#1	10 34		10 34	2	PAID IN FULL MAY 31 1955												
3	#1	#1	#1	#1	#1	#1	20		20	3	PAID IN FULL MAY 31 1955												
4	#1	#1	#1	#1	#1	#1	20		20	4	PAID IN FULL MAY 31 1955												
5	#1	#1	#1	#1	#1	#1	20		20	5	PAID IN FULL MAY 31 1955												
6	#1	#1	#1	#1	#1	#1	20		20	6	PAID IN FULL MAY 31 1955												
7	#1	#1	#1	#1	#1	#1	20		20	7	PAID IN FULL MAY 31 1955												
8	#1	#1	#1	#1	#1	#1	20		20	8	PAID IN FULL MAY 31 1955												
9	SOLD FOR TAXES						40		40	9	Forfeited 11-15-55												40 cents cancelled
10	SOLD FOR TAXES						40		40	10	Forfeited 11-15-55												40 cents cancelled
11	SOLD FOR TAXES						40		40	11													40
12	SOLD FOR TAXES						40		40	12													40
13	SOLD FOR TAXES						40		40	13													40
14	SOLD FOR TAXES						40		40	14													40
15	SOLD FOR TAXES						40		40	15													40
16	SOLD FOR TAXES						40		40	16													40
17	SOLD FOR TAXES						40		40	17													40
18	SOLD FOR TAXES						40		40	18													40
19	SOLD FOR TAXES						40		40	19													40
20	SOLD FOR TAXES						40		40	20													40
										# 60													84
										1654													1174
										400													80¢ case.

133-30

Village of Sylvan

Sylvan Shady Shores

North Sylvan

Carlson's Sylvan Park

Acht

Holland Allen's 1st

101st to Sylvan



















Assessment Roll and Tax List of Real Property in the Town of Sylvan,  
\*Indicate Type of Property: R-Residential, C-Commercial, I-Industrial, U-Utility, F-Farm

IN WHOSE NAME ASSESSED	TO WHOM TRANSFERRED	DESCRIPTION OF PROPERTY				No. School District	Indicate Homestead Yes or No	Indicate Agricultural Yes or No	Indicate Type of Property	TRUE AND FULL VALUATIONS				ASSESSED VALUATIONS					FINAL EQUALIZED VALUE			
		SUBDIVISION	Sec. or Lot	Town or Block	Rng					Number of Acres of Land	LAND Exclusive of Structures and Improvements	BUILDINGS and Other Structures	MACHINERY Permanently Attached to Real Estate	TOTAL True and Full Value	RURAL		ALL OTHER			MACHINERY Permanently Attached to Real Estate	TOTAL ASSESSED VALUE	Total Assessed Value as Equalized by the Board of Review
															Acres	100ths	Homestead Up to \$4,000 20%	Over \$4,000 and Non-Homestead 33 1/3%				
Thomas R. President Carlyon		Carlyon's Sylvan Park	23					L	45	150					195	65	65					
Frieda A. Carlyon			24					L	45						45	15	15					
"	"		30					L	30						30	10	10					
"	"		31					L	30						30	10	10					
"	"		32					L	30						30	10	10					
"	"		33					L	30						30	10	10					
"	"		34					L	30						30	10	10					
Township of Sylvan			35																			
"			36																			
"			37																			
"			38																			
"			39																			
"			40																			
"			41																			
"			42																			
"			43																			
"			44																			
Frieda A. Carlyon			45					L	24						24	8	8					
"			46					L	24						24	8	8					
Chas. R. + Mabel M. Woodhouse			47					L	24						24	8	8					
									312	150					462	154	154					

Cass County, Minnesota, for Taxes for the Year 1954.

SOLD FOR TAXES	VALUATIONS BY SCHOOL DISTRICTS AS EQUALIZED BY DEPARTMENT OF TAXATION						Tax including State Homestead	State Tax on Non-Homestead	SPECIAL TAXES	TOTAL TAXES	PAID	WHEN PAID	Number of Receipt	March Settlement 1955	June Settlement 1955	Penalty	November Settlement 1955	Penalty	Collections to First Monday in January 1956	Penalty	Delinquent on First Monday in January 1956	Total Delinquent Tax and Penalty	REMARKS
	District No. Rate	District No. Rate	District No. Rate	District No. Rate	District No. Rate	District No. Rate																	
	Dollars	Dollars	Dollars	Dollars	Dollars	Dollars																	
1																							
2																							
3																							
4																							
5																							
6																							
7																							
8																							
9																							
10																							
11																							
12																							
13																							
14																							
15																							
16																							
17																							
18																							
19																							
20																							
									154														

133 - 30

Village of Sylvan

North Sylvan

Carlyon's Sylvan Park

Sylvan Shady Shores

Land & Allen's Addn. to Sylvan Beach

Land & Allen's Addn. to Sylvan























Assessment Roll and Tax List of Real Property in the Town of Sylvan, Cass County, Minnesota, for Taxes for the Year 1954.

Table with columns: IN WHOSE NAME ASSESSED, TO WHOM TRANSFERRED, DESCRIPTION OF PROPERTY, TRUE AND FULL VALUATIONS, ASSESSED VALUATIONS, FINAL EQUALIZED VALUE. Includes handwritten entries for John + Annie Rosa, Frank + Alice M. Allen, W. Blakeley + Kathryn English, etc.

754 1865 2619 108 693 501

Cass County, Minnesota, for Taxes for the Year 1954.

Table with columns: SOLD FOR TAXES, VALUATIONS BY SCHOOL DISTRICTS AS EQUALIZED BY DEPARTMENT OF TAXATION, Tax including State Homestead, State Tax on Non-Homestead, SPECIAL TAXES, TOTAL TAXES, PAID, WHEN PAID, Number of Receipt, March Settlement 1955, June Settlement 1955, November Settlement 1955, Penalty, Collections to First Monday in January 1956, Delinquent on First Monday in January 1956, Total Delinquent Tax and Penalty, REMARKS. Includes handwritten entries for John + Annie Rosa, Frank + Alice M. Allen, etc.

108 693 801 17638 364 18002 13381 4621

133 - 30

Village of Sylvan

North Sylvan

Sylvan Park

Sylvan Beach

Land & Allen's 1st Add'n to Sylvan Beach

Sylvan Shady Shores

Land & Allen's 2nd Add'n to Sylvan Beach

Land & Allen's 3rd Add'n to Sylvan Beach



Assessment Roll and Tax List of Real Property in the Town of Sylvan,  
\*Indicate Type of Property: R-Residential, C-Commercial, I-Industrial, U-Utility, F-Farm

IN WHOSE NAME ASSESSED	TO WHOM TRANSFERRED	DESCRIPTION OF PROPERTY				No. School District	Indicate Homestead Yes or No	Indicate Agricultural Yes or No	* Indicate Type of Property	TRUE AND FULL VALUATIONS				ASSESSED VALUATIONS						FINAL EQUALIZED VALUE	
		Subdivision	Sec. or Block	Town or Rng	Number of Acres of Land					LAND Exclusive of Structures and Improvements	BUILDINGS and Other Structures	MACHINERY Permanently Attached to Real Estate	TOTAL True and Full Value	RURAL		ALL OTHER		MACHINERY Permanently Attached to Real Estate	TOTAL ASSESSED VALUE		Total Assessed Value as Equalized by the Board of Review
														Homestead Up to \$4,000 20%	Over \$4,000 and Non-Homestead 33 1/3%	Homestead Up to \$4,000 25%	Over \$4,000 and Non-Homestead 40%				
Elmer E. Erickson		Sylvan Shady Shores (Lots 7 & 8 Sec. 2-133-30)	1	1		No	No	T	9				3	3		3					
Floyd B. Hame			2			Yes		R	20	275		295	59	59		59					
R. B. & Evelyn E. Roll			3			No		L	39	225		264	88	88		88					
Elmer E. Erickson			4					T	3			3	1	1		1					
Chester L. & Agnes C. Whiteley			5					L	39	225		264	88	88		88					
"	"		6					T	3			3	1	1		1					
Brooks Paulist & F. E. Wagner	Nancy Walsdorf		7					T	9			9	3	3		3					
Elmer E. Erickson			8					L	50	175		225	75	75		75					
Lewis P. Burseth			9					L	50	175		225	75	75		75					
Lowell & Marilyn Jensen			10					L	49	200		249	83	83		83					
Walter E. & Mabel A. Larson			11					L	48			48	16	16		16					
"	"		12					L	51	225		276	92	92		92					
Oral S. & Frances M. Kirkvold	Adeline Allison		13					L	50	274		324	108	108		108					
Elmer E. Erickson			14					L	49	125		174	58	58		58					
"	"		15					L	51	600		651	217	217		217					
"	"		16					T	51			51	17	17		17					
"	"		17					T	51			51	17	17		17					
Lyfe R. & Evelyn M. Cannon			18					L	51	225		276	92	92		92					
"	"		19					L	49	200		249	83	83		83					
Robert J. Pesek			20					L	51			51	17	17		17					
George R. & Bernice M. Lundberg									773	2924		3697	59	1134		1193					

SOLD FOR TAXES	VALUATIONS BY SCHOOL DISTRICTS AS EQUALIZED BY DEPARTMENT OF TAXATION						Tax including State Homestead	State Tax on Non-Homestead	SPECIAL TAXES	TOTAL TAXES	PAID	WHEN PAID	Number of Receipt	March Settlement 1955	June Settlement 1955	Penalty 1955	November Settlement 1955	Penalty 1955	Collections to First Monday in January 1956	Penalty 1956	Delinquent on First Monday in January 1956	Total Delinquent Tax and Penalty	REMARKS	
	District No.	District No.	District No.	District No.	District No.	District No.																		
	Rate	Rate	Rate	Rate	Rate	Rate																		
1						3	66	02		68													638 .75	
2						59	1300			1300			2	PAID IN FULL MAY 31 1955	754	1300								
3						88	1938	46		1984			3	2nd Half Paid OCT 31 1955	9204	992	992							
4						1	22			22			4										228 .24	
5						88	1938	46		1984			5	PAID IN FULL MAY 31 1955		1984								
6						1	22			22			6	PAID IN FULL MAY 31 1955		22								
7						3	66	02		68			7	PAID IN FULL OCT 21 1955	14527				68	03				
8						75	1652	40		1692			8	PAID IN FULL MAY 31 1955	7540	1692								
9						75	1652	40		1692			9	PAID IN FULL APR 20 1955	4963	1692								
10						83	1828	44		1872			10	PAID IN FULL MAY 31 1955	9206	1872								
11						16	352	08		360			11	PAID IN FULL MAY 31 1955		360								
12						92	2026	48		2074			12	PAID IN FULL MAY 31 1955		2074								
13						108	2378	56		2434			13	2nd Half Paid AUG 31 1955	12785	1217	1217							
14						58	1278	30		1308			14	PAID IN FULL MAY 18 1955		6582								
15						217	4778	114		4892			15	PAID IN FULL MAY 16 1955	5442									
16						17	374	08		382			16	PAID IN FULL MAY 18 1955										
17						17	374	08		382			17	PAID IN FULL MAY 31 1955		382								
18						92	2026	48		2074			18	PAID IN FULL MAY 31 1955	9209	2074								
19						83	1828	44		1872			19	PAID IN FULL APR 26 1955	5790	1872								
20						17	374	08		382			20	PAID IN FULL MAY 31 1955	9210	382								
						59	26272	592		26864					24497	2277							90	

133-30  
Sylvan Shady Shores  
North Sylvan  
Sylvan Park  
Sylvan Beach  
Land & Allen's 1st Add'n to Sylvan Beach

Land & Allen's 2nd Add'n to Sylvan Beach  
Land & Allen's 3rd Add'n to Sylvan Beach







Assessment Roll and Tax List of Real Property in the Town of Sylvan

\*Indicate Type of Property: R-Residential, C-Commercial, I-Industrial, U-Utility, F-Farm

Cass County, Minnesota, for Taxes for the Year 1954.

Table with columns: IN WHOSE NAME ASSESSED, TO WHOM TRANSFERRED, SUBDIVISION, TRUE AND FULL VALUATIONS (RURAL, ALL OTHER, MACHINERY), ASSESSED VALUATIONS, FINAL EQUALIZED VALUE, VALUATIONS BY SCHOOL DISTRICTS, TAX INCLUDING STATE HOMESTEAD, SPECIAL TAXES, TOTAL TAXES, PAID, WHEN PAID, Number of Receipt, March Settlement, June Settlement, November Settlement, Collections to First Monday, Delinquent on First Monday, Total Delinquent Tax and Penalty, REMARKS.

133-30, Sylvan Shady Shores, North Sylvan, Sylvan Park, Sylvan Beach, Sylvan's 1st Add'n to Sylvan Beach, Sylvan's 2nd Add'n to Sylvan Beach, Sylvan's 3rd Add'n to Sylvan Beach

Land & Allen's 2nd Add'n to Sylvan Beach, Land & Allen's 3rd Add'n to Sylvan Beach















Assessment Roll and Tax List of Real Property in the Town of Sylvan

\*Indicate Type of Property: R-Residential, C-Commercial, I-Industrial, U-Utility, F-Farm

Cass County, Minnesota, for Taxes for the Year 1954.

Table with columns: IN WHOSE NAME ASSESSED, TO WHOM TRANSFERRED, DESCRIPTION OF PROPERTY, TRUE AND FULL VALUATIONS, ASSESSED VALUATIONS, VALUATIONS BY SCHOOL DISTRICTS AS EQUALIZED BY DEPARTMENT OF TAXATION, SOLD FOR TAXES, SPECIAL TAXES, TOTAL TAXES, PAID, WHEN PAID, Number of Receipt, March Settlement 1955, June Settlement 1955, Penalty, November Settlement 1955, Collections to First Monday in January 1956, Delinquent on First Monday in January 1956, Total Delinquent Tax and Penalty, REMARKS.

133-30 Sylvan Shady Shores Sylvan North Sylvan Sylvan B Sylvan C Sylvan D Sylvan E Sylvan F Sylvan G Sylvan H Sylvan I Sylvan J Sylvan K Sylvan L Sylvan M Sylvan N Sylvan O Sylvan P Sylvan Q Sylvan R Sylvan S Sylvan T Sylvan U Sylvan V Sylvan W Sylvan X Sylvan Y Sylvan Z

Grand Total 18 217 87 156 150 306 102 102 102 1984 60 2044 1082 180 782



