

ASSESSMENT & TAX LIST

Sylvan

1953

Assessment of

2.
 old #1 - all 133-30
 In 133-29 - Sec. 4-5-6-7-8-9-16-17-18
 7 1/2 7/16 1/4 + 1/2 of NW 1/4 Sec. 20
 7 1/2 7/16 1/4 + 1/2 of NW 1/4 Sec. 21 + all Platted property

TABULAR SCHEDULE OF VALUATIONS,

LEVIED IN THE Town OF Sylvan

RATES AND TAXES

COUNTY OF CASS, STATE OF MINNESOTA

School District No.	VALUATION BY SCHOOL DISTRICTS				RATE OF STATE TAXES		RATE OF COUNTY TAXES					RATE OF TOWN TAXES										RATE OF		SCHOOL TAXES		TAXES LEVIED										
	Agricultural Lands	Non-Agricultural Lands	Personal Property	Total Value of all Property except Money and Credits	Total Rate of State Tax	Rev.	R. & B.	Welfare	Bonds and Int.	R. & B. Sky	Total Rate of County Tax	Rev.	R. & B.	Drag Tax	State Loan	Total Rate of Town Tax	Local	Special	State Loan	Deficiency	Tuition	Transportation	#1 Debt	C.O.	Total Rate of Sch'l Tax	Total Rate of all Taxes	LOCAL 1 MILL AND SPECIAL SCHOOL TAXES BY DISTRICTS					ALL OTHER TAXES				
																											Local 1 Mill	Special	State Loan	Def.	Transp.	#1 Debt	C.O.	Total School Taxes	FUNDS	Rate
1	52080		2090 5573	59,743	H. 5.28	28.3	15.9	50.52	10.69	2.	107.41	1.34	10.4	1.	15.74	1.25	28.	2.	10.	66.	194.43	5765	144132	161438	11531	57653	380509	State - Non-Homestead,	59764							
2	40494	48495		88,989 148,732												1.50	28.	2.	10.	91.	219.43	209	10450	5852	418	2090	19019	State - Homestead,	78560							
					N. H.	4.66										1.25	28.	2.	10.	67.	190.43	4049	101235	113383	8099	4049	40494	County Revenue,	420911							
																1.50	28.	2.	10.	92.	220.43	4850	242475	135786	9699	4850	48495	County Road and Bridge,	236484							
																											County Welfare,	751394								
																											Bonds and Interest	158995								
																											R. & B. Sinking	29746								
																											Town Revenue,	19930								
																											Town Road and Bridge,	199301								
																											Town Drag,	14873								
																											Town State Loan,	234104								
																											School Local 1 Mill,	14873								
																											School Special,	498292								
																											School State Loan,	416449								
																											Deficiency									
																											Tuition									
																											Transportation	29747								
																											#1 Debt	8899								
																											Capital Outlay	148732								
																													1116992							

1. 29-152
 2. 29-152
 See above for 2. rate

Assessed Value	Rural	All Other	Personal Property	Total
Homestead	20,362			20,362
Non-Homestead	120,707		7663	128,370
Total	141,069		7663	148,732

Total Taxes Real Estate 29291.16
 Pers. Prop. 1578.34
 Total 30869.50

Total Levy, \$ 30,869.50

Total Number of Acres 11,259.38
 State of Minnesota, }
 COUNTY OF CASS } ss.

I, L. C. Peterson Auditor of said County and State aforesaid, do hereby certify that the foregoing is a true and correct Schedule, showing the valuation of all the taxable property, in the County of Sylvan, in said County, the several rates of Taxation and Totals of the several Tax Funds levied thereon for the year A. D. 1953

Witness my hand and official seal, this 8 day of January A. D. 1953

SEAL

L. C. Peterson County Auditor
By Helen Billen, Deputy

Village of Sylvan
 Carlyon's Sylvan Park
 Land & Allen's 1st Add'n. to Sylvan Park

Assessment of

COLLECTIONS OF TAXES OF 1953

Town

OF Sylvan

CASS COUNTY, MINNESOTA

FUNDS	MARCH SETTLEMENT 1953	JUNE SETTLEMENT 1953	NOV. SETTLEMENT 1953	Amount Collected from Nov. 1953 to First Monday in Jan. 1954	REDUCTIONS	Total Reductions and Collected	BALANCE UNCOLLECTED	ADDITIONS	Total Uncollected to First Monday in January, 1954
State—Non-Homestead, State—Homestead,	3310 4153	41466 28439	22475 29925	260 225					
County Revenue, County Road and Bridge, County Welfare, County Bond and Interest, <i>A. + B. sinking</i>	22259 12506 39736 8408 1573	222250 124868 396757 83752 15707	160393 90115 286328 60587 11335	1205 677 2151 455 85					
Town Revenue, Town Road and Bridge, Town Drag, Town State Loan,	1054 10540 787	10523 105235 7853	7574 75746 5668	57 577 43					
School Local 1 Mill, School Special, School State Loan, Deficiency Tuition Transportation C. O. P. I. Debt	786 25996 22022 1574 7865 92	7853 210826 219993 45707 78533 5289	5668 196489 158693 11335 56676 1392	43 1187 1192 85 426 43					
	162661	1575144	1180819	8455					

	SCHOOL DISTRICT NO.	LOCAL 1 MILL	SPECIAL	STATE LOAN	Deficiency	Transport.	C. O.	P. I. Debt	TOTALS
MARCH SETTLEMENT	School District No. (1) G-29-152	512	12807		14344	1025	5123		33811
	(1) A-29-152	182	9120		5707	365	1824		16598
	(2) G-29-152	21	522		585	42	209	21	1400
	(2) A-29-152	71	3547		1986	142	707	71	6526
Totals		786	25996		22022	1574	7865	92	58335
JUNE SETTLEMENT	School District No. (1) G-29-152	2557	63929		71601	5114	25572		168773
	(1) A-29-152	88	416		233	17	93		757
	(2) G-29-152	4717	117914		132063	9433	47165	4717	316009
	(2) A-29-152	571	28567		15996	1143	8713	571	52561
Totals		7853	210826		219893	15707	78533	5288	538100
NOVEMBER SETTLEMENT	School District No. (1) G-29-152	2282	57052		63898	4564	22821		150617
	(1) A-29-152	1994	99696		55830	3988	19939		181447
	(2) G-29-152	1194	29840		33420	2387	11936	1194	79971
	(2) A-29-152	198	9701		5545	396	1980	198	18218
Totals		5668	196489		158693	11335	56676	1392	430253
NOVEMBER to JANUARY	School District No. (2) G-29-152	38	942		1055	75	377	38	2525
	(2) A-29-152	05	245		137	10	49	05	451
Totals		43	1187		1192	85	426	43	2976
ADDITIONS	School District No.								
Totals									
REDUCTIONS	School District No.								
Totals									

Carlsson's Sylvan Park
 Addn. to Sylvan Park
 Land & Allen's 1st

Assessment Roll and Tax List of Real Property in the Town of Sylvan of Sylvan

Form SCD (53) 1953-54

IN WHOSE NAME ASSESSED	TO WHOM TRANSFERRED	DESCRIPTION OF PROPERTY				TRUE AND FULL VALUATIONS										FINAL EQUALIZED VALUE	
		SUBDIVISION	Sec. or Lot	Town or Block	Number of Acres of Land	LAND Exclusive of Structures and Improvements	BUILDINGS and Other Structures	MACHINERY Permanently Attached to Real Estate	TOTAL True and Full Value	RURAL		ALL OTHER		MACHINERY Permanently Attached to Real Estate	TOTAL ASSESSED VALUE		Total Assessed Value as Equalized by the Board of Review
										Up to \$4,000 20%	Over \$4,000 and Non-Homestead 33 1/3%	Homestead Up to \$4,000 25%	Over \$4,000 and Non-Homestead 40%				
<i>O. B. Birdsall</i>	<i>Birdsall</i>	NE 1/4 of NE 1/4			40												
<i>Louis M. Staub & Carrie Peterson</i>		NW 1/4 of NE 1/4			40												
<i>State of Minnesota</i>		SW 1/4 of NE 1/4															
<i>Bilbert B. & May Birdsall</i>		SE 1/4 of NE 1/4			40												
<i>Laurence Lapka</i>		NE 1/4 of NW 1/4			40												
<i>Minnesota Power & Light Co.</i>	<i>less Ry</i>	NW 1/4 of NW 1/4			32												
<i>Minnesota Power & Light Co.</i>		SW 1/4 of NW 1/4			40												
<i>Minnesota Power & Light Co.</i>		SE 1/4 of NW 1/4			40												
<i>Philip F. Holzman</i>		NE 1/4 of SW 1/4			40												
<i>Minnesota Power & Light Co.</i>		NW 1/4 of SW 1/4			40												
<i>Philip F. Holzman</i>		SW 1/4 of SW 1/4			40												
<i>Philip F. Holzman</i>		SE 1/4 of SW 1/4			40												
<i>Milton & Eileen Wradsky</i>		NE 1/4 of SE 1/4			40												
<i>Steven Kriz</i>		NW 1/4 of SE 1/4			40												
<i>Steven Kriz</i>		SW 1/4 of SE 1/4			40												
<i>Milton & Eileen Wradsky</i>		SE 1/4 of SE 1/4			40												
					392												

Cass County, Minnesota, for Taxes for the Year 1953.

SOLD FOR TAXES	VALUATIONS BY SCHOOL DISTRICTS AS EQUALIZED BY DEPARTMENT OF TAXATION						Tax including State Homestead	State Tax on Non-Homestead	SPECIAL TAXES	TOTAL TAXES	PAID	WHEN PAID	Number of Receipt	March Settlement 1954	June Settlement 1954	Penalty	November Settlement 1954	Penalty	Collections to First Monday in January 1955	Penalty	Delinquent on First Monday in January 1955	Total Delinquent Tax and Penalty	REMARKS
	District No.	District No.	District No.	District No.	District No.	District No.																	
	Rate	Rate	Rate	Rate	Rate	Rate																	
1																							
2																							
3																							
4																							
5																							
6																							
7																							
8																							
9																							
10																							
11																							
12																							
13																							
14																							
15																							
16																							
17																							
18																							
19																							
20																							

Village of Sylvan
North Sylvan
Carlson's Sylvan Park
Land & Allen's 1st Add'n. to Sylvan Park

Assessment Roll and Tax List of Real Property in the Town of Sylvan

Form 50D (53) JULY-1952 EDITION, MINNESOTA

IN WHOSE NAME ASSESSED	TO WHOM TRANSFERRED	DESCRIPTION OF PROPERTY				TRUE AND FULL VALUATIONS				ASSESSED VALUATIONS					FINAL EQUALIZED VALUE			
		SUBDIVISION	Sec. or Lot	Town or Block	Rng.	Number of Acres of Land	Machinery Permanently Attached to Real Estate	LAND Exclusive of Structures and Improvements	BUILDINGS and Other Structures	Machinery Permanently Attached to Real Estate	RURAL		ALL OTHER			Machinery Permanently Attached to Real Estate	TOTAL ASSESSED VALUE	Total Assessed Value as Equalized by the Board of Review
											Acres	100ths	Homestead Up to \$4,000 20%	Over \$4,000 and Non-Homestead 33 1/3%				
<i>Minnesota River Light Co</i>		1				20 acs of NE 1/4 of NE 1/4											770	
<i>Ray Carmichael</i>		2				1/4 ac. of NW 1/4 of NE 1/4											25	
		3				SW 1/4 of NE 1/4												
		4				SE 1/4 of NE 1/4												
<i>Honor A. & Emily J. Sandall</i>		5				515 acs. of 1/2 of NW 1/4 of NE 1/4											375	
<i>Harry Leckler</i>		6				20 acs. of NE 1/4 of NW 1/4 less 12.4 acs. Ry.											760	
		7				NW 1/4 of NW 1/4												
		8				SW 1/4 of NW 1/4												
		9				SE 1/4 of NW 1/4												
<i>State of Minnesota</i>		10				1/2 ac. of NW 1/4 of NE 1/4												
		11				NE 1/4 of SW 1/4												
		12				NW 1/4 of SW 1/4												
		13				SW 1/4 of SW 1/4												
		14				SE 1/4 of SW 1/4												
<i>Gull River Cemetery Ass'n</i>		15				20 1/2 acs. of SW 1/4 of NW 1/4											Exempt	
		16				NE 1/4 of SE 1/4												
		17				NW 1/4 of SE 1/4												
		18				SW 1/4 of SE 1/4												
		19				SE 1/4 of SE 1/4												
		20																

3160

Cass County, Minnesota, for Taxes for the Year 1953.

SOLD FOR TAXES	VALUATIONS BY SCHOOL DISTRICTS AS EQUALIZED BY DEPARTMENT OF TAXATION						Tax including State Homestead	State Tax on Non-Homestead	SPECIAL TAXES	TOTAL TAXES	PAID	WHEN PAID	Number of Receipt	March Settlement 1954	June Settlement 1954	November Settlement 1954	Penalty	Collections to First Monday in January 1955	Penalty	Delinquent on First Monday in January 1955	Total Delinquent Tax and Penalty	REMARKS
	District No.	District No.	District No.	District No.	District No.	District No.																
	Rate	Rate	Rate	Rate	Rate	Rate																
1																						
2																						
3																						
4																						
5																						
6																						
7																						
8																						
9																						
10																						
11																						
12																						
13																						
14																						
15																						
16																						
17																						
18																						
19																						
20																						

$\$ 85$
 $\underline{62}$
 147

$\$ 28 = 118$
 $\underline{62} = 175$
 3492

712
 $\underline{2874}$
 3586

30
 3522

2243 1199

Village of Sylvan, Minn. North Sylvan, Carleton's Sylvan Park, Land & Allen's 1st Add'n. to Sylvan Park

Assessment Roll and Tax List of Real Property in the Town of Sylvan,

Cass County, Minnesota, for Taxes for the Year 1953.

IN WHOSE NAME ASSESSED	TO WHOM TRANSFERRED	DESCRIPTION OF PROPERTY				TRUE AND FULL VALUATIONS				ASSESSED VALUATIONS						FINAL EQUALIZED VALUE	
		SUBDIVISION	Sec. or Lot	Town or Block	No. of Acres of Land	LAND Exclusive of Structures and Improvements	BUILDINGS and Other Structures	MACHINERY Permanently Attached to Real Estate	TOTAL True and Full Value	RURAL		ALL OTHER		MACHINERY Permanently Attached to Real Estate	TOTAL ASSESSED VALUE		Total Assessed Value as Equalized by the Board of Review
										Homestead Up to \$4,000 20%	Over \$4,000 and Non-Homestead 33 1/3%	Homestead Up to \$4,000 25%	Over \$4,000 and Non-Homestead 40%				
Geo. Ward Agnes D. Brice		part of NE 1/4 of Lot 1	28	133	29	752											
Ole Peterson		NW 1/4 of NE 1/4 Lot 2				3995											
G. D. McKisson		SW 1/4 of NE 1/4 Lot 3				3225											
Richard M. Georgia Johnson		SE 1/4 of NE 1/4 Lot 4				250											
Clifford C. + Gladys G. Swiler		2200' of Lot 1				3											
Julian + Mildred + George Elizabeth Davis		NE 1/4 of NW 1/4 Lot 1				1											
G. B. Lorraine Blackford		SW 1/4 of NE 1/4 of 1.396 of 1st 1/2 mi. E side of Hardy Lake				1											
Fred Deugen		SW 1/4 of NE 1/4 of 1.396 of 1st 1/2 mi. E side of Hardy Lake				1											
Harvey G. Judd + Lucile B. Judd		part of Lot 1															
		NE 1/4 of SW 1/4															
		NW 1/4 of SW 1/4															
		SW 1/4 of SW 1/4															
		SE 1/4 of SW 1/4															
		NE 1/4 of SE 1/4															
		NW 1/4 of SE 1/4															
		SW 1/4 of SE 1/4															
		SE 1/4 of SE 1/4															

88 22

SOLD FOR TAXES	VALUATIONS BY SCHOOL DISTRICTS AS EQUALIZED BY DEPARTMENT OF TAXATION						Tax including State Homestead	State Tax on Non-Homestead	SPECIAL TAXES	TOTAL TAXES	PAID	WHEN PAID	Number of Receipt	March Settlement 1954	June Settlement 1954	Penalty	November Settlement 1954	Penalty	Collections to First Monday in January 1955	Penalty	Delinquent on First Monday in January 1955	Total Delinquent Tax and Penalty	REMARKS
	District No.	District No.	District No.	District No.	District No.	District No.																	
	Rate	Rate	Rate	Rate	Rate	Rate																	
1																							
2																							
3																							
4																							
5																							
6																							
7																							
8																							
9																							
10																							
11																							
12																							
13																							
14																							
15																							
16																							
17																							
18																							
19																							
20																							

8365
585
750

18472 274

18746

12326

4986

1464

Village of Sylvan
North Sylvan
Carlyon's Sylvan Park
Land & Allon's 1st Add'n. to Sylvan Park

Assessment Roll and Tax List of Real Property in the Town of Sylvan

Cass County, Minnesota, for Taxes for the Year 1953.

Form SCD (53) 1-15-53

IN WHOSE NAME ASSESSED	TO WHOM TRANSFERRED	DESCRIPTION OF PROPERTY				TRUE AND FULL VALUATIONS				ASSESSED VALUATIONS					FINAL EQUALIZED VALUE			
		SUBDIVISION	Sec. or Lot	Town or Block	Rng.	Number of Acres of Land	LAND Exclusive of Structures and Improvements	BUILDINGS and Other Structures	MACHINERY Permanently Attached to Real Estate	TOTAL True and Full Value	RURAL		ALL OTHER			MACHINERY Permanently Attached to Real Estate	TOTAL ASSESSED VALUE	Total Assessed Value as Equalized by the Board of Review
											Acres	100%	Homestead Up to \$4,000 20%	Over \$4,000 and Non-Homestead 33 1/3%				
						Dollars	Dollars	Dollars	Dollars	Dollars	Dollars	Dollars	Dollars	Dollars	Dollars	Dollars		
		NE 1/4 of NE 1/4																
		NW 1/4 of NE 1/4																
		SW 1/4 of NE 1/4																
		SE 1/4 of NE 1/4																
		Lot 1																
		NE 1/4 of NW 1/4																
		NW 1/4 of NW 1/4																
		SW 1/4 of NW 1/4																
		SE 1/4 of NW 1/4																
		NE 1/4 of SW 1/4																
		NW 1/4 of SW 1/4																
		SW 1/4 of SW 1/4																
		SE 1/4 of SW 1/4																
		NE 1/4 of SE 1/4																
		NW 1/4 of SE 1/4																
		SW 1/4 of SE 1/4																
		SE 1/4 of SE 1/4																

Alvin W. Johnson's, Albert Hagen's, John Hagen's, Hjalmer A. Hennan's, Clarence Hennan's

5550

SOLD FOR TAXES	VALUATIONS BY SCHOOL DISTRICTS AS EQUALIZED BY DEPARTMENT OF TAXATION						Tax including State Homestead	State Tax on Non-Homestead	SPECIAL TAXES	TOTAL TAXES	PAID	WHEN PAID	Number of Receipt	March Settlement 1954	June Settlement 1954	Penalty 1954	November Settlement 1954	Penalty 1954	Collections to First Monday in January 1955	Penalty 1955	Delinquent on First Monday in January 1955	Total Delinquent Tax and Penalty	REMARKS
	District No.	District No.	District No.	District No.	District No.	District No.																	
	Rate	Rate	Rate	Rate	Rate	Rate																	

SOLD FOR TAXES

74

1446

34

1480

Balance Paid OCT 30 1954 158 99
Part Paid MAY 31 1954 1253

959

521

74

* 1446

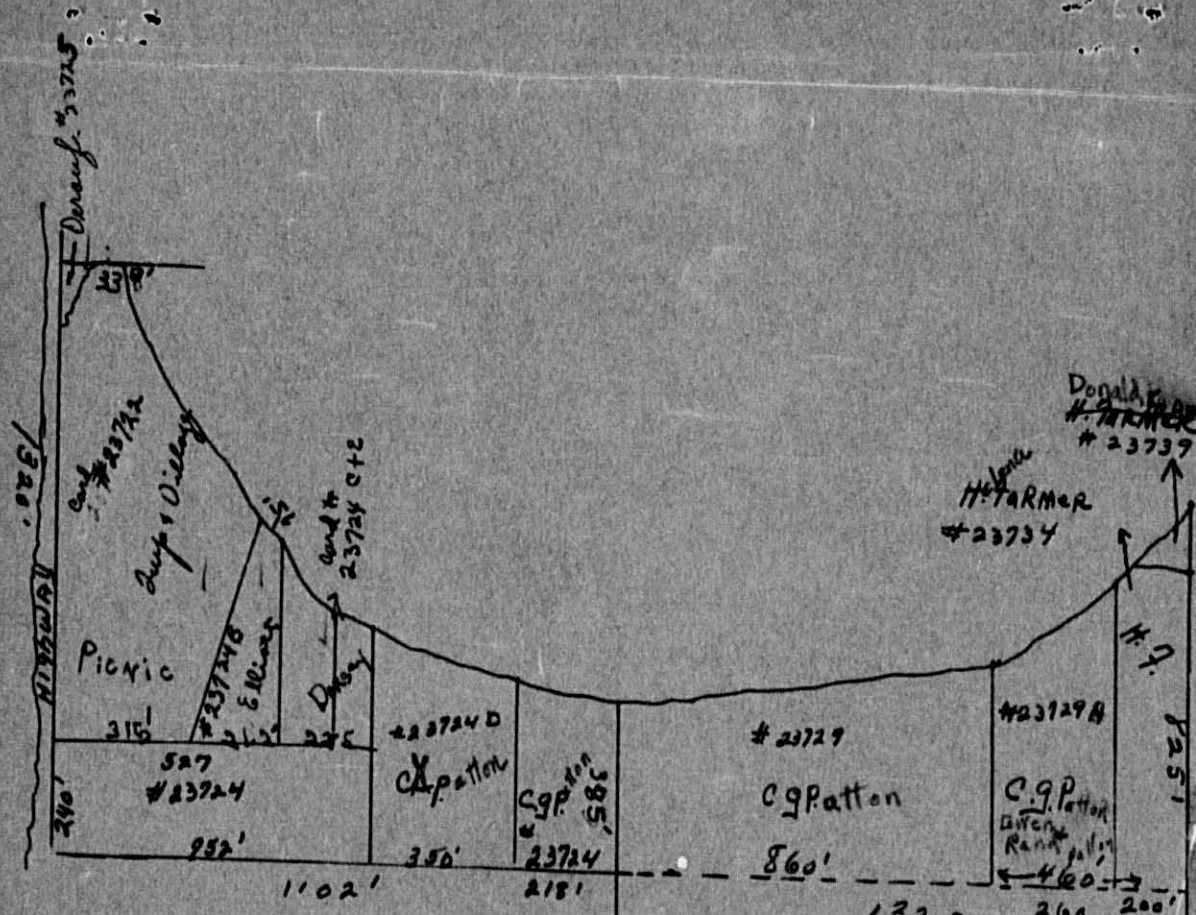
34

1480

959

521

Village of Sylvan
North Sylvan
Carlson's Sylvan Park
Land & Allen's 1st Add'n. to Sylvan Park



~~R.G. Patton has marking left?~~

5-133-30

E 218' of Lot 2
 W. 860' of Lot 1 n of extended
 E+W 1/4 line

23735
 R.A. Cole
 40acs ✓

checked - 1954

1320

