

ASSESSMENT & TAX LIST - 1962

Sylvan



SUMMARY OF TAX COLLECTION

Original Levy	\$ 51,051.74
Additions	\$ 89.12
Abate <del>ments</del>	\$ 73.74
	\$ 51,067.12

COLLECTIONS

March Settlement	\$ 3,211.58
June Settlement	\$ 25,771.27
November Settlement	\$ 20,183.45
January Settlement	\$ 40,424,486.72
Over Collected	\$
Under Collected	\$
Delinquent	\$ 1580.40
Total	\$ 51,067.12

133-29  
 133-29  
 133-30  
 Paul K. ...  
 Land & All Villages of ...  
 to Sylva ...  
 Sylva ...  
 North ...  
 Sylva Lake ...  
 Carolyn ...  
 Sylva Park ...  
 Sylva ...  
 Beach ...  
 Land & All ...  
 Add'n. ...  
 to Sylva ...









Assessor's Return of Exempt Real Property in the \_\_\_\_\_ of \_\_\_\_\_ County of \_\_\_\_\_, Minnesota, for the Year 1962

FORM 2 MILLER-DAVIS CO., MINNEAPOLIS

NAMES OF OWNERS	SUBDIVISION	Sec. or Lot	Town or Block	Range	No of Acres	FOR WHAT PURPOSE USED	TRUE AND FULL VALUATIONS			ASSESSED VALUATIONS		REMARKS
							LAND Exclusive of Structures and Improvements Dollars	BUILDINGS and Other Structures Dollars	MACHINERY Permanently Attached to Real Estate Dollars	TOTAL True and Full Value Dollars	Rural Including Machinery 33 1/3%	
Hull River Cemetery Assns	202' x 226' 1/2' SW 1/4 of 70 1/2	17	133	29		Cemetery	15		15	5		
Hardy Lake Camp Assn Inc	Lot 6 Sec 277' x 266.7 x 466.7 and Highway	33	133	29	39 1/8	Church grounds and bible camp	486	1725	2211	737		
Township of Sylvan, May, Fairview + Village of Pelican	Part of lot 2	5	133	30	4 -	Public Picnic Grounds	90	120	210	70		
Town of Sylvan	Village of Sylvan Lots 6 thru 14					Town Hall	90	600	690	330		
Township of Sylvan	Carlton Sylvan Park lots 35 to 44 incl.					Township Forest	270		270	90		

133-29 133-29  
 Sylvan's Beach  
 to Sylvan  
 Sylvan  
 North  
 Sylvan Lake  
 Carolyn's  
 Sylvan Park  
 Beach  
 Land & Albert's Lake  
 Add'n. to Sylvan Beach



































Ass

All that part of the NE 1/4 of the NE 1/4, 17-133-20, lying above 1186' contour line running across said tract, which is 1186' above sea level elevation as established by the Mississippi River Commission, being approx. 20 acs. included in the Northern Pacific R/W, & a certain one ac. tract owned & occupied by School Dist. No. 1 of Cass Co., & excepting the S. 15 rods of the 1/4 of the NE 1/4 of the NE 1/4.

List of Real Property in the

Town of Sylvan

\* Indicate Type of Property: R-Residential, C-Commercial, I-Industrial, U-Utility, F-Farm, L-Lakeshore, T-Timber, M-Mineral

Cass County, Minnesota, for Taxes for the Year 1962.

Table with columns: IN WHOSE NAME ASSESSED, PROPERTY, TRUE AND FULL VALUATIONS, ASSESSED VALUATIONS, and FINAL EQUALIZED VALUE. Includes entries for John A. Miller, Minnesota Power & Light Co., and Albert J. Cunningham.

(continued on next page)

Table with columns: VALUATIONS BY SCHOOL DISTRICTS AS EQUALIZED BY DEPARTMENT OF TAXATION, TAX INCLUDING STATE HOMESTEAD, SPECIAL TAXES, TOTAL TAXES, PAID, WHEN PAID, Number of Receipt, March Settlement 1961, June Settlement 1961, November Settlement 1961, Collections to First Monday in January 1961, Delinquent on First Monday in January 1961, Total Delinquent Tax and Penalty, and REMARKS. Includes handwritten notes and district numbers.







Assessment Roll and Tax List of Real Property in the Town of Sylvan

Cass County, Minnesota, for Taxes for the Year 1962.

Form SCD MILLER-DAVIS CO., MINNEAPOLIS

\* Indicate Type of Property: R-Residential, C-Commercial, I-Industrial, U-Utility, F-Farm, L-Lakeshore, T-Timber, M-Mineral

Table with columns: IN WHOSE NAME ASSESSED, SUBDIVISION, No. School District, Indicate Homestead, Acres, TRUE AND FULL VALUATIONS (LAND, BUILDINGS, MACHINERY, TOTAL), ASSESSED VALUATIONS (RURAL, ALL OTHER, MACHINERY, Seasonal and Recreational Cabins, TOTAL ASSESSED VALUE, Total Assessed Value as Equalized by the Board of Review, FINAL EQUALIZED VALUE).

Table with columns: VALUATIONS BY SCHOOL DISTRICTS AS EQUALIZED BY DEPARTMENT OF TAXATION (District No., Rate, Mills), Tax Including State Homestead, State Tax on Non-Homestead, SPECIAL TAXES, TOTAL TAXES, PAID, WHEN PAID, Number of Receipt, March Settlement, June Settlement, November Settlement, Penalty, Collections to First Monday in January 1964, Delinquent on First Monday in January 1964, Total Delinquent Tax and Penalty, REMARKS.

Sylvan's Shady Shores, Sylvan's Village of Sylvan, Sylvan's North Sylvan Lake, Sylvan's Carolyn's Beach, Sylvan's Add'n. to Sylvan Beach



Assessment Roll and Tax List of Real Property in the Town of Sylvan, Cass County, Minnesota, for Taxes for the Year 1962.

Cass County, Minnesota, for Taxes for the Year 1962.

Form SCD MILLER-DAVIS CO., MINNEAPOLIS

\* Indicate Type of Property: R-Residential, C-Commercial, I-Industrial, U-Utility, F-Farm, L-Lakeshore, T-Timber, M-Mineral

Table with columns: IN WHOSE NAME ASSESSED, DESCRIPTION OF PROPERTY, TRUE AND FULL VALUATIONS, ASSESSED VALUATIONS, VALUATIONS BY SCHOOL DISTRICTS AS EQUALIZED BY DEPARTMENT OF TAXATION, TAXES, PAID, WHEN PAID, Number of Receipt, March Settlement 1961, June Settlement 1961, November Settlement 1961, Collections to First Monday in January 1961, Delinquent on First Monday in January 1961, Total Delinquent Tax and Penalty, REMARKS.

(Continued on next page)

Sylvan's Beach and all villages of Sylvan to Sylvan Beach



Assessment Roll and Tax List of Real Property in the Town of Sylvan, Cass County, Minnesota, for Taxes for the Year 1962.

Cass County, Minnesota, for Taxes for the Year 1962.

Form 5CD MILLER-DAVIS CO., MINNEAPOLIS

Main table with columns: IN WHOSE NAME ASSESSED, DESCRIPTION OF PROPERTY, TRUE AND FULL VALUATIONS, ASSESSED VALUATIONS, VALUATIONS BY SCHOOL DISTRICTS AS EQUALIZED BY DEPARTMENT OF TAXATION, TAXES, PAID, WHEN PAID, etc.

Sylvan's Brady to Sylvan Sylvan North Sylvan Lake Sylvan's Carolyn's Sylvan Park Beach Sylvan Add'n. to Sylvan Beach



Assessment Roll and Tax List of Real Property in the Town of Sylvan, Cass County, Minnesota, for Taxes for the Year 1962.

Table with columns: IN WHOSE NAME ASSESSED, SUBDIVISION, TRUE AND FULL VALUATIONS, ASSESSED VALUATIONS, VALUATIONS BY SCHOOL DISTRICTS AS EQUALIZED BY DEPARTMENT OF TAXATION, TAXES, PAID, WHEN PAID, Number of Receipt, March Settlement, June Settlement, November Settlement, Collections to First Monday, Delinquent on First Monday, Total Delinquent Tax and Penalty, REMARKS.

Sylvan's Beach, Sylvan's Shores, Sylvan's Village of North Sylvan Lake, Sylvan's Carolyn's Sylvan Park Beach, Land & All's 1st Add'n. to Sylvan Beach

135-29

135-30







Assessment Roll and Tax List of Real Property in the Town of Sylvan, Cass County, Minnesota, for Taxes for the Year 1962.

Cass County, Minnesota, for Taxes for the Year 1962.

Form 300 MILLER-DAVIS CO., MINNEAPOLIS

\* Indicate Type of Property: R-Residential, C-Commercial, I-Industrial, U-Utility, F-Farm, L-Lakeshore, T-Timber, M-Mineral

Main assessment table with columns for 'IN WHOSE NAME ASSESSED', 'DESCRIPTION OF PROPERTY', 'TRUE AND FULL VALUATIONS', 'ASSESSED VALUATIONS', 'VALUATIONS BY SCHOOL DISTRICTS AS EQUALIZED BY DEPARTMENT OF TAXATION', and 'TAXES'. Includes handwritten entries for Harold Carlson, Ole Peterson, and Govt Lot 2-4.

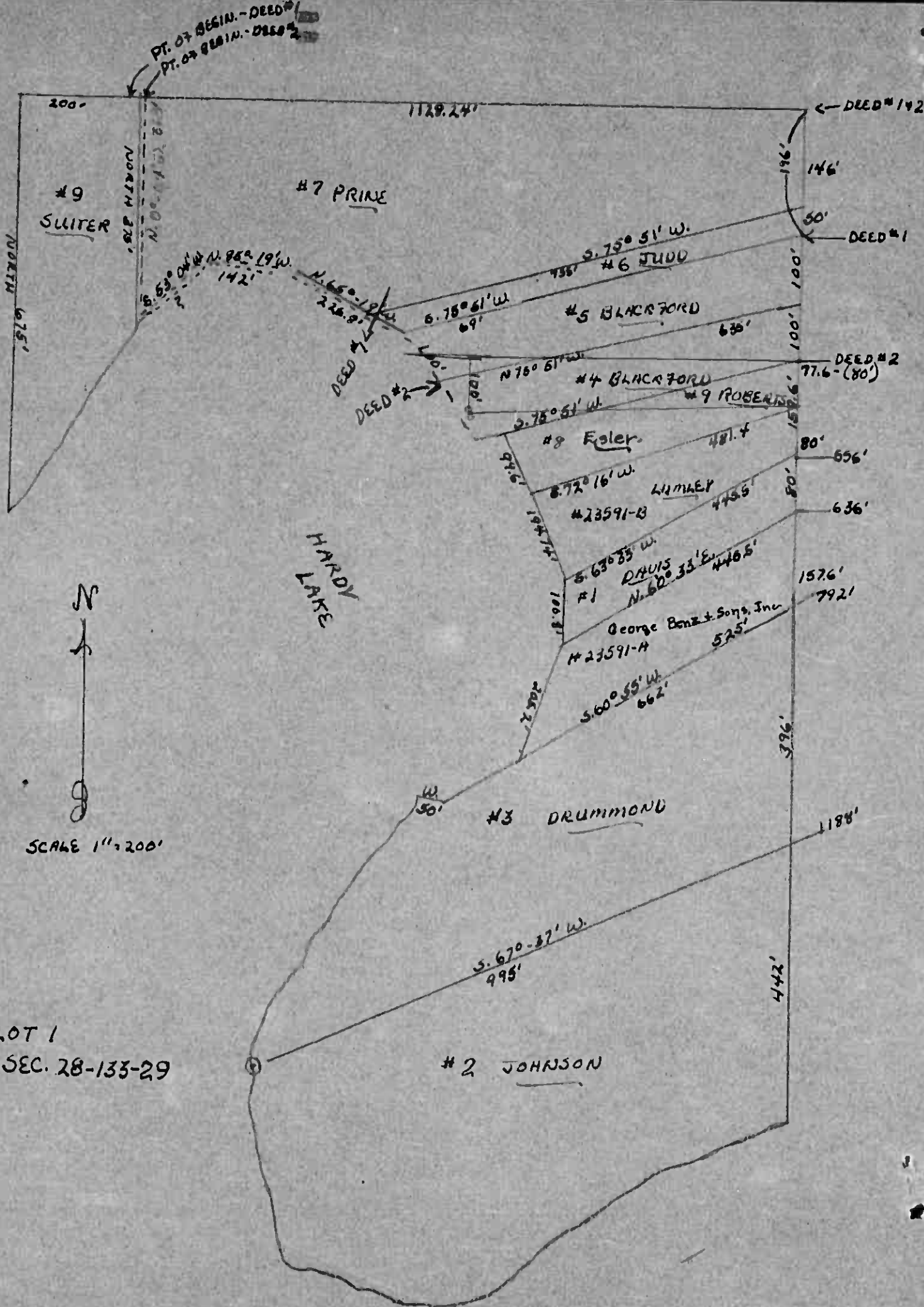
(Continued on next page)

Sylvan's Brady and All Villages of Sylvan to Sylvan Beach















Assessment Roll and Tax List of Real Property in the Town of Sylvan

Form SCD MILLER-DAVIS CO. MINNEAPOLIS

\* Indicate Type of Property: R-Residential, C-Commercial, I-Industrial, U-Utility, F-Farm, L-Lakeshore, T-Timber, M-Mineral

Cass County, Minnesota, for Taxes for the Year 1962.

Table with columns: IN WHOSE NAME ASSESSED, DESCRIPTION OF PROPERTY, TRUE AND FULL VALUATIONS, ASSESSED VALUATIONS, and FINAL EQUALIZED VALUE. Includes entries for State of Minnesota, Minnesota Power & Light Co., and William Benson.

Table with columns: VALUATIONS BY SCHOOL DISTRICTS AS EQUALIZED BY DEPARTMENT OF TAXATION, TAXES, PAID, WHEN PAID, and REMARKS. Includes handwritten notes and dates like '1st HALF PAID MAY 31 1963'.

Sylvan's Shady Land & All Village of Sylvan North Lake Sylvan Park Beach Sylvan's Add'n. to Sylvan Beach



Assessment Roll and Tax List of Real Property in the Town of Sylvan  
\* Indicate Type of Property: R-Residential, C-Commercial, I-Industrial, U-Utility, F-Farm, L-Lakeshore, T-Timber, M-Mineral

Cass County, Minnesota, for Taxes for the Year 1962.

Form 501 MILLER-DAVIS CO., MINNEAPOLIS

IN WHOSE NAME ASSESSED	DESCRIPTION OF PROPERTY			No. School District	Indicate Homestead Yes or No	Agricultural Use Yes or No	Indicate Type of Property	TRUE AND FULL VALUATIONS							Total Assessed Value as Equalized by the Board of Review	FINAL EQUALIZED VALUE	
	SUBDIVISION	Sec. or Lot	Town or Block					Number of Acres of Land	ASSESSED VALUATIONS								
									LAND Exclusive of Structures and Improvements	BUILDINGS and Other Structures	MACHINERY Permanently Attached to Real Estate	TOTAL True and Full Value	RURAL				ALL OTHER
			Acres 100ths	Dollars	Dollars	Dollars	Dollars	Dollars	Dollars	Dollars	Dollars	Dollars	Dollars	Dollars	Dollars		

SOLD FOR TAXES	VALUATIONS BY SCHOOL DISTRICTS AS EQUALIZED BY DEPARTMENT OF TAXATION						Tax including State Homestead	State Tax on Non-Homestead	SPECIAL TAXES	SPECIAL TAXES	TOTAL TAXES	PAID	WHEN PAID	Number of Receipt	March Settlement 1961	June Settlement 1961	November Settlement 1961	Penalty	Collections to First Monday in January 1961	Penalty	Delinquent on First Monday in January 1961	Total Delinquent Tax and Penalty	REMARKS
	District No.	District No.	District No.	District No.	District No.	District No.																	
	Rate	Rate	Rate	Rate	Rate	Rate																	
	Dollars	Dollars	Dollars	Dollars	Dollars	Dollars	\$ cts.	\$ cts.	\$ cts.	\$ cts.	\$ cts.	Month Day Year		\$ cts.	\$ cts.	\$ cts.	\$ cts.	\$ cts.	\$ cts.	\$ cts.	\$ cts.	\$ cts.	

State of Minnesota

Sylvan & Brady  
Shores  
Land & All Villages of  
to Sylvan  
Sylvan  
North  
Sylvan Lake  
Carolyn's  
Sylvan Lake  
Beach  
Sylvan  
Land & All Villages of  
Add'n. to Sylvan Beach



Assessment Roll and Tax List of Real Property in the Town of Sylvan, Cass County, Minnesota, for Taxes for the Year 1962.

Cass County, Minnesota, for Taxes for the Year 1962.

Form 501 MILLER-DAVIS CO., MINNEAPOLIS

\* Indicate Type of Property: R-Residential, C-Commercial, I-Industrial, U-Utility, F-Farm, L-Lakeshore, T-Timber, M-Mineral

Table with columns: IN WHOSE NAME ASSESSED, SUBDIVISION, TRUE AND FULL VALUATIONS, ASSESSED VALUATIONS, VALUATIONS BY SCHOOL DISTRICTS AS EQUALIZED BY DEPARTMENT OF TAXATION, SOLD FOR TAXES, SPECIAL TAXES, TOTAL TAXES, PAID, WHEN PAID, Number of Receipt, March Settlement 1961, June Settlement 1961, November Settlement 1961, Collections to First Monday in January 1961, Delinquent on First Monday in January 1961, Total Delinquent Tax and Penalty, REMARKS.

(Continued on next page)

Sylvan's Brady Land & Mill Village of Sylvan North Lake Sylvan Fall Sylvan Beach Land & Albert's L.L.C. Addn. to Sylvan Beach







Assessment Roll and Tax List of Real Property in the Town of Sylvan

Cass County, Minnesota, for Taxes for the Year 1962.

Form 501 MILLER-DAVIS CO., MINNEAPOLIS

\* Indicate Type of Property: R-Residential, C-Commercial, I-Industrial, U-Utility, F-Farm, L-Lakeshore, T-Timber, M-Mineral

Main table with columns: IN WHOSE NAME ASSESSED, DESCRIPTION OF PROPERTY, TRUE AND FULL VALUATIONS, ASSESSED VALUATIONS, VALUATIONS BY SCHOOL DISTRICTS AS EQUALIZED BY DEPARTMENT OF TAXATION, TAXES, PAID, WHEN PAID, etc.

(Continued on next page)

Sylvan's Shady... to Sylvan... Sylvan Lake... Sylvan Park Beach... Sylvan... Addn. to Sylvan Beach

133-30

Land & Alleged Int. Addn. to Sylvan Beach



Assessment Roll and Tax List of Real Property in the Town of Sylwan, Cass County, Minnesota, for Taxes for the Year 1962.

Cass County, Minnesota, for Taxes for the Year 1962.

Form 501 - MILLER-DAVIS CO., MINNEAPOLIS

\* Indicate Type of Property: R-Residential, C-Commercial, I-Industrial, U-Utility, F-Farm, L-Lakeshore, T-Timber, M-Mineral

Table with columns: IN WHOSE NAME ASSESSED, SUBDIVISION, TRUE AND FULL VALUATIONS, ASSESSED VALUATIONS, VALUATIONS BY SCHOOL DISTRICTS AS EQUALIZED BY DEPARTMENT OF TAXATION, SOLD FOR TAXES, SPECIAL TAXES, TOTAL TAXES, PAID, WHEN PAID, Number of Receipt, March Settlement 1963, June Settlement 1963, November Settlement 1963, Collections to First Monday in January 1964, Delinquent on First Monday in January 1964, Total Delinquent Tax and Penalty, REMARKS.

(continued on next page)

Sylvan's Beach, Sylwan, Sylwan Lake, Sylwan Beach, Sylwan, Add'l. to Sylwan Beach



















Assessment Roll and Tax List of Real Property in the Town of Sylvan

Form 301 - MILLER-DAVIS-GOZ MINNEAPOLIS

Indicate Type of Property: R-Residential, C-Commercial, Industrial, U-Utility, F-Farm, L-Lakeshore, T-Timber, M-Mineral

Table with columns: IN WHOSE NAME ASSESSED, DESCRIPTION OF PROPERTY, TRUE AND FULL VALUATIONS, ASSESSED VALUATIONS, and FINAL EQUALIZED VALUE. Includes entries for Donald R. Farmer, Thos L. and Mac L. Horn, Edwin A. and Alys A. Brown, Raleigh and Clara E. McHurrel, Lyle and Rosalie Dobbell, Percy L. McClay.

(Continued on next page)

Cass County, Minnesota, for Taxes for the Year 1962.

Table with columns: VALUATIONS BY SCHOOL DISTRICTS AS EQUALIZED BY DEPARTMENT OF TAXATION, TAXES, PAID, WHEN PAID, and REMARKS. Includes entries for various districts and tax amounts.

Sylvan's Shady Land & All Village of Sylvan to Sylvan Sylvan North Sylvan Lake Sylvan Carolyn's Sylvan Park Sylvan Add'l. to Sylvan Park

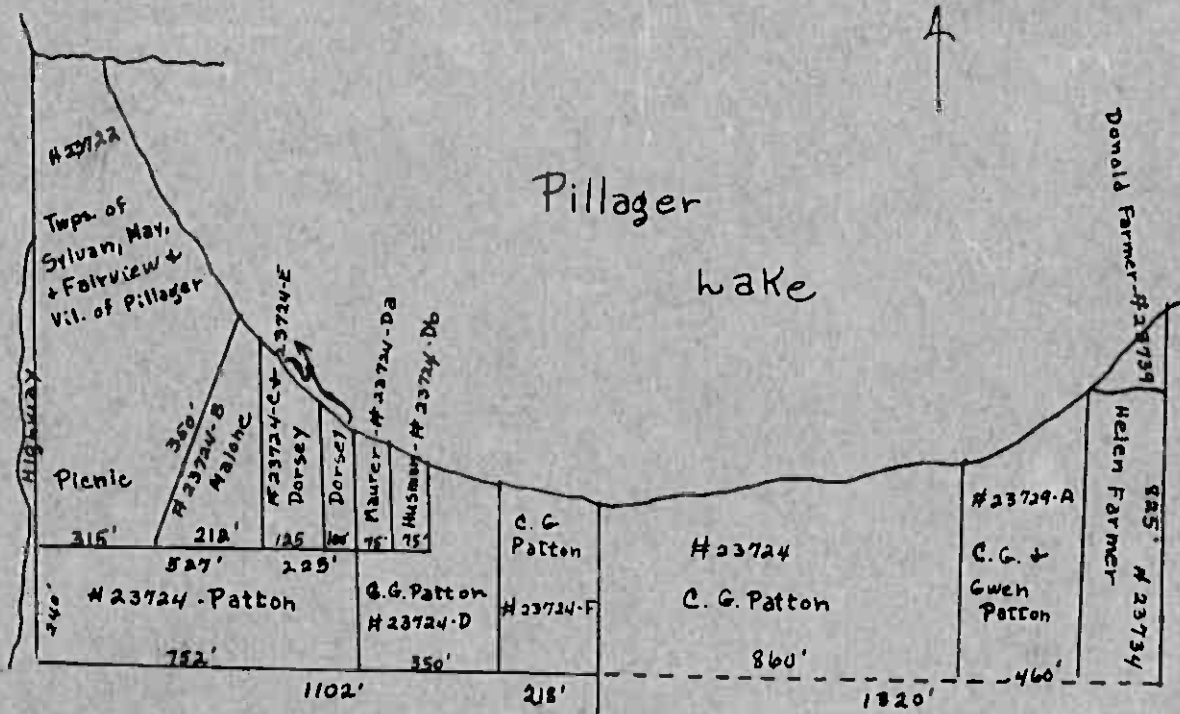
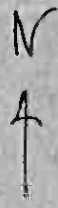












Sec. 5-133-30

E. 218' of Gov't. lot 2  
 W. 860' of Gov't. lot 1 N. of  
 extended E-W 1/4 line.

Lot 1  
 # 23735  
 Ralph A. + Cora Agnes Cole  
 40 acs.  
 1320'











Assessment Roll and Tax List of Real Property in the Town of Sylvan, Cass County, Minnesota, for Taxes for the Year 1962.

Cass County, Minnesota, for Taxes for the Year 1962.

\* Indicate Type of Property: R-Residential, C-Commercial, I-Industrial, U-Utility, F-Farm, L-Lakeshore, T-Timber, M-Mineral

Table with columns: IN WHOSE NAME ASSESSED, DESCRIPTION OF PROPERTY, TRUE AND FULL VALUATIONS, ASSESSED VALUATIONS, VALUATIONS BY SCHOOL DISTRICTS AS EQUALIZED BY DEPARTMENT OF TAXATION, Tax including State Homestead, State Tax on Non-Homestead, SPECIAL TAXES, TOTAL TAXES, PAID, WHEN PAID, Number of Receipt, March Settlement 1963, June Settlement 1963, Penalty, November Settlement 1963, Penalty, Collections to First Monday in January 1964, Penalty, Delinquent on First Monday in January 1964, Total Delinquent Tax and Penalty, REMARKS.

133-30

Sylvan's Brady and All Village of Sylvan North Sylvan Lake Carolynn's Sylvan Park Beach Land & Allens 1st Add'n. to Sylvan Beach



Assessment Roll and Tax List of Real Property in the Town of Sylvan, Cass County, Minnesota, for Taxes for the Year 1962.

Cass County, Minnesota, for Taxes for the Year 1962.

Form 501 MILLER-DAVIS CO., MINNEAPOLIS

Table with columns: IN WHOSE NAME ASSESSED, SUBDIVISION, TRUE AND FULL VALUATIONS (RURAL, ALL OTHER, MACHINERY, etc.), VALUATIONS BY SCHOOL DISTRICTS AS EQUALIZED BY DEPARTMENT OF TAXATION, TAXES (SPECIAL, TOTAL, PAID, WHEN PAID), and REMARKS. Includes handwritten entries for property owners like Ralph A. and Cora Agnes Cole, Amest Berndt, and O. A. and Erma Berndt.

Sylvan's Bladdy to Sylvan Village of Sylvan North Sylvan Lake Sylvan Park Sylvan Beach Land & Allotment's Int. Add'n. to Sylvan Beach











Assessment Roll and Tax List of Real Property in the Town of Sylvan, Cass County, Minnesota, for Taxes for the Year 1962.

Form SCD - MILLER-DAVIS CO., MINNEAPOLIS

\* Indicate Type of Property: R-Residential, C-Commercial, I-Industrial, U-Utility, F-Farm, L-Lakeshore, T-Timber, M-Mineral

Main table with columns: IN WHOSE NAME ASSESSED, DESCRIPTION OF PROPERTY, TRUE AND FULL VALUATIONS, ASSESSED VALUATIONS, VALUATIONS BY SCHOOL DISTRICTS AS EQUALIZED BY DEPARTMENT OF TAXATION, TAXES, PAID, WHEN PAID, Number of Receipt, March Settlement 1963, June Settlement 1963, November Settlement 1963, Collections to First Monday in January 1964, Delinquent on First Monday in January 1964, Total Delinquent Tax and Penalty, REMARKS.

135-30

Land & All Village of Sylvan North Lake Sylvan Park Beach Addn. to Sylvan Beach



Assessment Roll and Tax List of Real Property in the Town of Sylvan, Cass County, Minnesota, for Taxes for the Year 1962.

Form 501 - MILLER-DAVIS CO., MINNEAPOLIS

\* Indicate Type of Property: R-Residential, C-Commercial, I-Industrial, U-Utility, F-Farm, L-Lakeshore, T-Timber, M-Mineral

Main table with columns: IN WHOSE NAME ASSESSED, DESCRIPTION OF PROPERTY, TRUE AND FULL VALUATIONS, ASSESSED VALUATIONS, VALUATIONS BY SCHOOL DISTRICTS AS EQUALIZED BY DEPARTMENT OF TAXATION, TAXES, PAID, WHEN PAID, Number of Receipt, March Settlement, June Settlement, November Settlement, Collections to First Monday in January 1964, Delinquent on First Monday in January 1964, Total Delinquent Tax and Penalty, REMARKS.

133-30

133-30

Vertical text on the right edge: Village of Sylvan, Sylvan Lake, Sylvan Beach, Land & All...







Assessment Roll and Tax List of Real Property in the Town of Sylvan

Form 500-MILLER-DAVIS CO., MINNEAPOLIS

\* Indicate Type of Property: R-Residential, C-Commercial, I-Industrial, U-Utility, F-Farm, L-Lakeshore, T-Timber, M-Mineral

Table with columns: IN WHOSE NAME ASSESSED, SUBDIVISION, Description of Property, True and Full Valuations, Assessed Valuations (Rural, All Other, Machinery, Seasonal and Recreational Cabins), Total Assessed Value, Final Equalized Value.

Mrs. Annie C. Silver
Albert E. and Vernie M. Root
Mrs. Annie C. Silver
Albert E. and Vernie M. Root
Mrs. Annie C. Silver

Cass County, Minnesota, for Taxes for the Year 1962.

Table with columns: SOLD FOR TAXES, VALUATIONS BY SCHOOL DISTRICTS AS EQUALIZED BY DEPARTMENT OF TAXATION, Tax including State Homestead, State Tax on Non-Homestead, SPECIAL TAXES, TOTAL TAXES, PAID, WHEN PAID, Number of Receipt, March Settlement 1963, June Settlement 1963, November Settlement 1963, Collections to First Monday in January 1964, Delinquent on First Monday in January 1964, Total Delinquent Tax and Penalty, REMARKS.

Vertical text on the right edge of the page, including 'Sylvan Lake' and 'Beach'.



Assessment Roll and Tax List of Real Property in the Town of Sylvan

Cass County, Minnesota, for Taxes for the Year 1962.

Table with columns: IN WHOSE NAME ASSESSED, DESCRIPTION OF PROPERTY, TRUE AND FULL VALUATIONS, ASSESSED VALUATIONS, and FINAL EQUALIZED VALUE. Includes handwritten entries for John J. Parks, Olive + William Mosser, Helen + Gottfred Johnson, State of Minnesota, C. N. Sliter, Alice Anderson, et. al., Clarence H. Sliter, and C. N. Sliter.

Table with columns: VALUATIONS BY SCHOOL DISTRICTS AS EQUALIZED BY DEPARTMENT OF TAXATION, Tax Including State Homestead, State Tax on Non-Homestead, SPECIAL TAXES, TOTAL TAXES, PAID, WHEN PAID, Number of Receipt, March Settlement, June Settlement, November Settlement, Collections to First Monday in January, Delinquent on First Monday in January, Total Delinquent Tax and Penalty, and REMARKS. Includes handwritten entries for tax amounts and dates.

Vertical text on the right edge of the page, including 'Sylvan Lake', 'Sylvan Beach', and 'Addn. to Sylvan Beach'.



Assessment Roll and Tax List of Real Property in the Town of Sylvan, Cass County, Minnesota, for Taxes for the Year 1962.

Form 501 MILLER-DAVIS CO., MINNEAPOLIS

\* Indicate Type of Property: R-Residential, C-Commercial, I-Industrial, U-Utility, F-Farm, L-Lakeshore, T-Timber, M-Mineral

Cass County, Minnesota, for Taxes for the Year 1962.

Table with columns: IN WHOSE NAME ASSESSED, DESCRIPTION OF PROPERTY, THUE AND FULL VALUATIONS, ASSESSED VALUATIONS, VALUATIONS BY SCHOOL DISTRICTS AS EQUALIZED BY DEPARTMENT OF TAXATION, TAXES, PAID, WHEN PAID, Number of Receipt, March Settlement 1963, June Settlement 1963, November Settlement 1963, Collections to First Monday in January 1964, Delinquent on First Monday in January 1964, Total Delinquent Tax and Penalty, REMARKS.

25741

2312 2954 5266 896 177 2544 3867 6413 817

H 131 H 488 A 207 06 612 760 - 772 NA 257 52 743 848 = 1591 464 58

471 16

446 19 24 97

Vertical text on the right edge of the page, including 'Sylvan' and 'Cass County'.







Assessment Roll and Tax List of Real Property in the Town of Sylvan

Cass County, Minnesota, for Taxes for the Year 1962.

Form 501 - MILLER-DAVIS CO., MINNEAPOLIS

\* Indicate Type of Property: R-Residential, C-Commercial, I-Industrial, U-Utility, F-Farm, L-Lakeshore, T-Timber, M-Mineral

Table with columns: IN WHOSE NAME ASSESSED, DESCRIPTION OF PROPERTY, TRUE AND FULL VALUATIONS, ASSESSED VALUATIONS, VALUATIONS BY SCHOOL DISTRICTS AS EQUALIZED BY DEPARTMENT OF TAXATION, SOLD FOR TAXES, SPECIAL TAXES, TOTAL TAXES, PAID, WHEN PAID, Number of Receipt, March Settlement 1961, June Settlement 1961, November Settlement 1961, Collections to First Monday in January 1961, Delinquent on First Monday in January 1961, Total Delinquent Tax and Penalty, REMARKS.

Vertical text on the right edge: Land & All... to Sylvan, Village of Sylvan, North Sylvan Lake, Sylvan Park, Sylvan Beach, and All... to Sylvan Beach.







Assessment Roll and Tax List of Real Property in the Town of Sylvan, Cass County, Minnesota, for Taxes for the Year 1962.

Form 501 MILLER DAVIS CO., MINNEAPOLIS

Table with columns: IN WHOSE NAME ASSESSED, DESCRIPTION OF PROPERTY, TRU AND FULL VALUATIONS, ASSESSED VALUATIONS, VALUATIONS BY SCHOOL DISTRICTS AS EQUALIZED BY DEPARTMENT OF TAXATION, TAXES, PAID, WHEN PAID, Number of Receipt, March Settlement 1963, June Settlement 1963, Penalty, November Settlement 1963, Penalty, Collections to First Monday in January 1964, Delinquent on First Monday in January 1964, Total Delinquent Tax and Penalty, REMARKS.

133-30

Handy Land & Mineral Rights to Sylvan, Minnesota, Village of Sylvan, North Lake, Sylvan Park, Sylvan Beach, Addn. to Sylvan Beach



Assessment Roll and Tax List of Real Property in the Town of Sylvan, Cass County, Minnesota, for Taxes for the Year 1962.

Form 501 MILLER-DAVIS CO., MINNEAPOLIS

\* Indicate Type of Property: R-Residential, C-Commercial, I-Industrial, U-Utility, F-Farm, L-Lakeshore, T-Timber, M-Mineral

Table with columns: IN WHOSE NAME ASSESSED, SUBDIVISION, TRUE AND FULL VALUATIONS, ASSESSED VALUATIONS, VALUATIONS BY SCHOOL DISTRICTS AS EQUALIZED BY DEPARTMENT OF TAXATION, TAXES, PAID, WHEN PAID, etc.

(Continued on next page)

Vertical text on the right edge: Land & All... to Sylvan... Village of... Sylvan... Land & All... North Lake... Sylvan Lake... Addn. to Sylvan Beach



Assessment Roll and Tax List of Real Property in the Town of Sylvan, Cass County, Minnesota, for Taxes for the Year 1962.

Form 500 MILLER-DAVIS CO., MINNEAPOLIS

\* Indicate Type of Property: R-Residential, C-Commercial, I-Industrial, U-Utility, F-Farm, L-Lakeshore, T-Timber, M-Mineral

Table with columns: IN WHOSE NAME ASSESSED, DESCRIPTION OF PROPERTY, TRUE AND FULL VALUATIONS, ASSESSED VALUATIONS, VALUATIONS BY SCHOOL DISTRICTS AS EQUALIZED BY DEPARTMENT OF TAXATION, TAXES, PAID, WHEN PAID, Number of Receipt, March Settlement 1963, June Settlement 1963, November Settlement 1961, Collections to First Monday in January 1964, Delinquent on First Monday in January 1961, Total Delinquent Tax and Penalty, REMARKS.

Minnesota Power & Light Co. - Pillsbury Power Plant

Hesley & Peterson

Land & All... to Sylvan... Sylvan Lake... Add'n. to Sylvan Beach











Assessment Roll and Tax List of Real Property in the Town of Sylvan, Cass County, Minnesota, for Taxes for the Year 1962.

Cass County, Minnesota, for Taxes for the Year 1962.

Form 301 MILLER-DAVIS CO., MINNEAPOLIS

\* Indicate Type of Property: R-Residential, C-Commercial, I-Industrial, U-Utility, F-Farm, L-Lakeshore, T-Timber, M-Mineral

Table with columns for Description of Property, True and Full Valuations, Assessed Valuations, Final Equalized Value, and Taxation details. Includes handwritten entries for property owners like 'Edmer and Ella M. Hedan' and 'Minnesota Power + Light Co.' and various tax amounts.

Vertical text on the right edge of the page, including 'Sylvan' and 'Land & All other...'.



Assessment Roll and Tax List of Real Property in the Town of Sylvan, Cass County, Minnesota, for Taxes for the Year 1962.

Form 501 MILLER-DAVIS CO., MINNEAPOLIS

\* Indicate Type of Property: R-Residential, C-Commercial, I-Industrial, U-Utility, F-Farm, L-Lakeshore, T-Timber, M-Mineral

Table with columns: IN WHOSE NAME ASSESSED, DESCRIPTION OF PROPERTY, TRUE AND FULL VALUATIONS, ASSESSED VALUATIONS, and FINAL EQUALIZED VALUE. Includes handwritten entries for 'Minnesota Power & Light Co' and 'GOVT LOT 2'.

Cass County, Minnesota, for Taxes for the Year 1962.

Table with columns: SOLD FOR TAXES, VALUATIONS BY SCHOOL DISTRICTS AS EQUALIZED BY DEPARTMENT OF TAXATION, SPECIAL TAXES, TOTAL TAXES, PAID, WHEN PAID, and various settlement/penalty columns. Includes handwritten entries for 'NA' and 'PAID IN FULL MAY 31 1963'.

Vertical text on the right edge of the page, including 'Sylvan' and 'Cass County'.



Assessment Roll and Tax List of Real Property in the Town of Sylvan, Cass County, Minnesota, for Taxes for the Year 1962.

Form 501 - MILLER-DAVIS CO., MINNEAPOLIS

Table with columns: IN WHOSE NAME ASSESSED, DESCRIPTION OF PROPERTY, TRUE AND FULL VALUATIONS, ASSESSED VALUATIONS (RURAL, ALL OTHER), and FINAL EQUALIZED VALUE. Includes handwritten entries for Minnesota Power & Light Co. and St. Olaf College.

Cass County, Minnesota, for Taxes for the Year 1962.

Table with columns: SOLD FOR TAXES, VALUATIONS BY SCHOOL DISTRICTS AS EQUALIZED BY DEPARTMENT OF TAXATION, SPECIAL TAXES, TOTAL TAXES, PAID, WHEN PAID, and REMARKS. Includes handwritten tax amounts and payment dates.

Vertical text on the right edge of the page, including 'Sylvan' and 'Land & Allens 1st'.







Assessment Roll and Tax List of Real Property in the Town of Sylvan, Cass County, Minnesota, for Taxes for the Year 1962.

Form 30 MILLER-DAVIS CO., MINNEAPOLIS

\* Indicate Type of Property: R-Residential, C-Commercial, I-Industrial, U-Utility, F-Farm, L-Lakeshore, T-Timber, M-Mineral

DESCRIPTION OF PROPERTY

TRUE AND FULL VALUATIONS

ASSESSED VALUATIONS

IN WHOSE NAME ASSESSED

SUBDIVISION Village of Sylvan

Table with columns for property details: Sec. of Lot, Town or Block, No. of Acres, School District, Indicate Home-stead, Indicate Seasonal, Indicate Type of Property, Land Exclusive of Structures and Improvements, Buildings and Other Structures, Machinery Permanently Attached to Real Estate, TOTAL True and Full Value, Rural (Homestead, Over \$4,000, Timber Land), All Other (Homestead, Over \$4,000, Machinery, Seasonal and Recreational Cabins), TOTAL ASSESSED VALUE, Total Assessed Value as Equalized by the Board of Review, FINAL EQUALIZED VALUE.

Marlin and Lena Loftis
State of Minnesota
Della P. Luttrell

(Continued on next page)

NA

VALUATIONS BY SCHOOL DISTRICTS AS EQUALIZED BY DEPARTMENT OF TAXATION

Table with columns for tax details: SOLD FOR TAXES, District No., District Rate, District No., District Rate, District No., District Rate, District No., District Rate, District No., District Rate, Tax Including State Homestead, State Tax on Non-Homestead, SPECIAL TAXES, SPECIAL TAXES, TOTAL TAXES, PAID, WHEN PAID, Number of Receipt, March Settlement 1961, June Settlement 1963, November Settlement 1963, Penalty, Collections to First Monday in January 1964, Delinquent on First Monday in January 1964, Total Delinquent Tax and Penalty, REMARKS.

Sylvan Beach to Sylvan Beach
Land & Allens 2nd Add'n. North Sylvan Lake
Land & Allen 3rd Add'n. North Sylvan Lake
Land & Allens 1st Add'n. Sylvan Beach
Land & Allens 2nd Add'n. Sylvan Beach
Land & Allens 3rd Add'n. Sylvan Beach







Assessment Roll and Tax List of Real Property in the Town of Sylvan

Form 5C MILLER-DAVIS CO., MINNEAPOLIS

\* Indicate Type of Property: R-Residential, C-Commercial, I-Industrial, U-Utility, F-Farm, L-Lakeshore, T-Timber, M-Mineral

Village of Sylvan

IN WHOSE NAME ASSESSED	DESCRIPTION OF PROPERTY			No. School District	Indicate Homestead Yes or No	Agricultural or Non-Agricultural	Indicate Type of Property	TRUE AND FULL VALUATIONS				ASSESSED VALUATIONS							FINAL EQUALIZED VALUE	
	SUBDIVISION	Sec. or Lot	Town or Block					Number of Acres of Land	LAND Exclusive of Structures and Improvements	BUILDINGS and Other Structures	MACHINERY Permanently Attached to Real Estate	TOTAL True and Full Value	RURAL		ALL OTHER			TOTAL ASSESSED VALUE		Total Assessed Value as Equalized by the Board of Review
													Homestead Up to \$4,000 20%	Over \$4,000 and Non-Homestead 33 1/3%	Timber Land Class 3e 20%	Homestead Up to \$4,000 25%	Over \$4,000 and Non-Homestead 40%			
George M. and Bernice V. Schilder		1 2		116	yes	No	R	5					2		2					
" " " "		2			yes	"	"	5					2		2					
" " " "		3			yes	"	"	5					2		2					
Jack F. and Ellen J. Marlow		4			no	"	"	7					3		3					
" " " "		5			no	"	"	9					3		3					
Town of Sylvan		6											2		2					
" " " "		7																		
" " " "		8																		
" " " "		9																		
" " " "		10																		
Town of Sylvan		11																		
" " " "		12																		
" " " "		13																		
" " " "		14																		
Della D. Luttrell		15			yes	No	R	15					3		3					
" " " "		16			yes	No	"	15					3		3					
" " " "		17			yes	"	"	38	360				80		80					
George M. & Bernice V. Schilder		18			yes	"	"	25	240				53		53					
" " " "		19			yes	"	"	5					2		2					
George M. Schilder		20			yes	"	"	38	765				160		160					
" " " "					yes	"	"	25	810				107		107					
" " " "					yes	"	"	8					2		2					
" " " "								107	150				1		1					
" " " "								164	1125				6		6					
													262		262					

Cass County, Minnesota, for Taxes for the Year 1962.

SOLD FOR TAXES	VALUATIONS BY SCHOOL DISTRICTS AS EQUALIZED BY DEPARTMENT OF TAXATION						Tax Including State Homestead	State Tax on Non-Homestead	SPECIAL TAXES	SPECIAL TAXES	TOTAL TAXES	PAID	WHEN PAID	Number of Receipt	March Settlement 1963	June Settlement 1964	Penalty	November Settlement 1963	Penalty	Collections to First Monday in January 1964	Penalty	Delinquent on First Monday in January 1964	Total Delinquent Tax and Penalty	REMARKS
	District No.	District No.	District No.	District No.	District No.	District No.																		
	Rate	Rate	Rate	Rate	Rate	Rate																		
1							60			60		2nd HALF PAID OCT 28 1963												
2							60			60		1st HALF PAID MAY 31 1963												
3							60			60		2nd HALF PAID OCT 28 1963												
4							92	02		94		1st HALF PAID MAY 31 1963												
5							92	02		94		2nd HALF PAID OCT 28 1963												
6																								
7																								
8																								
9																								
10																								
11																								
12																								
13																								
14																								
15							92			92		PAID IN FULL MAY 9 1963												
16							92			92		PAID IN FULL MAY 9 1963												
17							2430			2430		PAID IN FULL MAY 8 1963												
18							60			60		2nd HALF PAID OCT 28 1963												
19							4858			4858		1st HALF PAID MAY 31 1963												
20							60			60		2nd HALF PAID OCT 28 1963												
							72	04		7960		1st HALF PAID MAY 31 1963												

Sylvan Land & Aleson 2nd Add'n to Sylvan Beach  
Land & Aleson 3rd Add'n to Sylvan Beach  
Sylvan North Sylvan Lake  
Sylvan 5th Add'n to Sylvan Beach  
Sylvan 6th Add'n to Sylvan Beach  
Sylvan 7th Add'n to Sylvan Beach



Assessment Roll and Tax List of Real Property in the Town of Sylvan,  
\* Indicate Type of Property: R-Residential, C-Commercial, I-Industrial, U-Utility, F-Farm, L-Lakeshore, T-Timber, M-Mineral

Form 5C MILLER-DAVIS CO., MINNEAPOLIS

Cass County, Minnesota, for Taxes for the Year 1962.

VILLAGES of Sylvan

George M. Skildes  
" " "

IN WHOSE NAME ASSESSED	DESCRIPTION OF PROPERTY				No. School District	Indicate Homestead Yes or No	Agricultural Rec. Yes or No	Indicate Type of Property	TRUE AND FULL VALUATIONS				ASSESSED VALUATIONS							FINAL EQUALIZED VALUE		
	SUBDIVISION	Sec. or Lot	Town or Block	Number of Acres of Land					LAND Exclusive of Structures and Improvements	BUILDINGS and Other Structures	MACHINERY Permanently Attached to Real Estate	TOTAL True and Full Value	RURAL			ALL OTHER					TOTAL ASSESSED VALUE	Total Assessed Value as Equalized by the Board of Review
													Acres 100ths	Homestead Up to \$4,000 20%	Over \$4,000 and Non-Homestead 33 1/3%	Timber Land Class 3e 20%	Homestead Up to \$4,000 25%	Over \$4,000 and Non-Homestead 40%	MACHINERY Permanently Attached to Real Estate 33 1/3%			
	Village of Sylvan								Dollars	Dollars	Dollars	Dollars	Dollars	Dollars	Dollars	Dollars	Dollars	Dollars	Dollars			
1		21	2		116	yes	R		85				2					1				
2		22				yes	"		85				2					2				
3																						
4																						
5																						
6																						
7																						
8																						
9																						
10																						
11																						
12																						
13																						
14																						
15																						
16																						
17																						
18																						
19																						
20									10				2					2				
									16				4					4				

SOLD FOR TAXES	VALUATIONS BY SCHOOL DISTRICTS AS EQUALIZED BY DEPARTMENT OF TAXATION						Tax including State Homestead	State Tax on Non-Homestead	SPECIAL TAXES	SPECIAL TAXES	TOTAL TAXES	PAID	WHEN PAID	Number of Receipt	March Settlement 1961	June Settlement 1961	November Settlement 1961	Penalty	Collections to First Monday in January 1961	Penalty	Delinquent on First Monday in January 1961	Total Delinquent Tax and Penalty	REMARKS	
	District No.	District No.	District No.	District No.	District No.	District No.																		
	Rate	Rate	Rate	Rate	Rate	Rate																		
1																								
2											60													
3											60													
4																								
5																								
6																								
7																								
8																								
9																								
10																								
11																								
12																								
13																								
14																								
15																								
16																								
17																								
18																								
19																								
20																								

Sylvan Land & Alesius 2nd Add'n. North Sylvan Lake Sylvan Park McKisson Land & Alesius 1st Add'n. to Sylvan Beach







Assessment Roll and Tax List of Real Property in the Town of Sylvan, Cass County, Minnesota, for Taxes for the Year 1962.

Cass County, Minnesota, for Taxes for the Year 1962.

Form 3C MILLER-DAVIS CO., MINNEAPOLIS \* Indicate Type of Property: R-Residential, C-Commercial, I-Industrial, U-Utility, F-Farm, L-Lakeshore, T-Timber, M-Mineral

Table with columns: IN WHOSE NAME ASSESSED, SUBDIVISION, Sec. of Lot, Town or Block, Number of Acres of Land, No. School District, Ind. rate Homestead, Agr. or Seaw. Use, Ind. rate Type of Property, TRUE AND FULL VALUATIONS (LAND, BUILDINGS, MACHINERY, TOTAL), ASSESSED VALUATIONS (RURAL, ALL OTHER), and FINAL EQUALIZED VALUE.

Table with columns: SOLD FOR TAXES, VALUATIONS BY SCHOOL DISTRICTS AS EQUALIZED BY DEPARTMENT OF TAXATION, Tax Including State Homestead, State Tax on Non-Homestead, SPECIAL TAXES, TOTAL TAXES, PAID, WHEN PAID, Number of Receipt, March Settlement 1963, June Settlement 1963, Penalty, November Settlement 1963, Penalty, Collections to First Monday in January 1964, Delinquent on First Monday in January 1964, Total Delinquent Tax and Penalty, and REMARKS.

133-30 Villages of Sylvan, North Sylvan Lake, Carolyn's Sylvan Park, Sylvan Beach

Sylvan Beach, Land & Ailene 2nd Add'n, Land & Ailene 3rd Add'n, Sylvan Beach, McKisson Land & Ailene's 1st, Sylvan Beach



Assessment Roll and Tax List of Real Property in the Town of Sylvan

Form 50 MILLER-DAVIS CO., MINNEAPOLIS

\* Indicate Type of Property: R-Residential, C-Commercial, I-Industrial, U-Utility, F-Farm, L-Lakeshore, T-Timber, M-Mineral

Cass County, Minnesota, for Taxes for the Year 1962.

133-30 Village of Sylvan North Sylvan Lake Carolynn's Sylvan Park

Table with columns: IN WHOSE NAME ASSESSED, DESCRIPTION OF PROPERTY, TRUE AND FULL VALUATIONS, ASSESSED VALUATIONS, VALUATIONS BY SCHOOL DISTRICTS AS EQUALIZED BY DEPARTMENT OF TAXATION, SOLD FOR TAXES, SPECIAL TAXES, TOTAL TAXES, PAID, WHEN PAID, Number of Receipt, March Settlement 1963, June Settlement 1963, Penalty, November Settlement 1963, Penalty, Collections to First Monday in January 1964, Delinquent on First Monday in January 1964, Total Delinquent Tax and Penalty, REMARKS.

Sylvan Land & Aleson 2nd Add'n to Sylvan Beach McKisson Land & Aleson's 1st Add'n to Sylvan Beach















Assessment Roll and Tax List of Real Property in the Town of Sylvan

\* Indicate Type of Property: R-Residential, C-Commercial, I-Industrial, U-Utility, F-Farm, L-Lakeshore, T-Timber, M-Mineral

Table with columns: IN WHOSE NAME ASSESSED, SUBDIVISION, Sec. or Lot, Town or Block, No. School District, Ind. or Non-Ind., Agri. or Non-Agri., Ind. or Non-Ind., TRUE AND FULL VALUATIONS (LAND, BUILDINGS, MACHINERY, TOTAL), ASSESSED VALUATIONS (RURAL, ALL OTHER, MACHINERY, Seasonal and Recreational Cabins, TOTAL ASSESSED VALUE), Total Assessed Value as Equalized by the Board of Review, FINAL EQUALIZED VALUE.

Cass County, Minnesota, for Taxes for the Year 1962.

Table with columns: SOLD FOR TAXES, VALUATIONS BY SCHOOL DISTRICTS AS EQUALIZED BY DEPARTMENT OF TAXATION, Tax Including State Homestead, State Tax on Non-Homesteaded, SPECIAL TAXES, TOTAL TAXES, PAID, WHEN PAID, Number of Receipt, March Settlement 1963, June Settlement 1963, Penalty, November Settlement 1963, Penalty, Collections to First Monday in January 1964, Penalty, Delinquent on First Monday in January 1964, Total Delinquent Tax and Penalty, REMARKS.

133-30 Village of Sylvan North Sylvan Lake North Sylvan Park Sylvan Beach

Sylvan Beach to Sylvan Beach Land & Aline 2nd Add'n to Sylvan Beach Land & Aline 3rd Add'n to Sylvan Beach McKisson Land & Aline's 1st Add'n to Sylvan Beach



Assessment Roll and Tax List of Real Property in the Town of Sylvan, Minnesota

Form 50 MILLER-DAVIS CO. MINNEAPOLIS

Table with columns: IN WHOSE NAME ASSESSED, SUBDIVISION, Description of Property, True and Full Valuations, Assessed Valuations, Final Equalized Value. Includes entries for Arthur Edward Bondeson, Frank Roberts, Fred H. and Loretta M. Betcher, etc.

Cass County, Minnesota, for Taxes for the Year 1962.

Table with columns: SOLD FOR TAXES, VALUATIONS BY SCHOOL DISTRICTS AS EQUALIZED BY DEPARTMENT OF TAXATION, Tax Including State Homestead, State Tax on Non-Homestead, SPECIAL TAXES, TOTAL TAXES, PAID, WHEN PAID, Number of Receipt, March Settlement 1961, June Settlement 1963, November Settlement 1963, Penalty, Collections to First Monday in January 1964, Delinquent on First Monday in January 1964, Total Delinquent Tax and Penalty, REMARKS. Includes entries for 1 through 20.

Sylvan Beach, North Sylvan Park, Sylvan Lake, Villages of Sylvan

Sylvan Beach, North Sylvan Park, Sylvan Lake, Villages of Sylvan, Land & Aliens 2nd Add'n, Land & Aliens 3rd Add'n, Nicklason Add'n, to Sylvan Beach







Assessment Roll and Tax List of Real Property in the Town of Sylvan

Form 50-MILLER-DAVIS CO., MINNEAPOLIS

\* Indicate Type of Property: R-Residential, C-Commercial, I-Industrial, U-Utility, F-Farm, L-Lakeshore, T-Timber, M-Mineral

Table with columns: IN WHOSE NAME ASSESSED, SUBDIVISION, Part of Govt Lot 2, Sec. 11-133-30, TRUE AND FULL VALUATIONS, ASSESSED VALUATIONS, and FINAL EQUALIZED VALUE.

Cass County, Minnesota, for Taxes for the Year 1962.

Table with columns: VALUATIONS BY SCHOOL DISTRICTS AS EQUALIZED BY DEPARTMENT OF TAXATION, TAX INCLUDING STATE HOMESTEAD, SPECIAL TAXES, TOTAL TAXES, PAID, WHEN PAID, and REMARKS.

Vertical text on the left margin: Villages of Sylvan, North Sylvan Park, Sylvan Beach, Land & Allen's 1st Add'n to Sylvan Beach.

Vertical text on the right margin: Sylvan's Beach, Land & Allen's 2nd Add'n to Sylvan Beach, Land & Allen's 3rd Add'n to Sylvan Beach, Jackson Acres.



Assessment Roll and Tax List of Real Property in the Town of Sylvan

Cass County, Minnesota, for Taxes for the Year 1962.

Sylvan Shady Shores, Sylvan, Sylvan Beach, Sylvan Park, Sylvan Lake, Sylvan Beach, Sylvan Beach, Land & Allen's 1st Add'n. to Sylvan Beach

Table with columns: IN WHOSE NAME ASSESSED, SUBDIVISION, Sec. of Lot, Town or Block, Hng., Acres, No. School District, Indicate Home-land, Agr. or Non-Agr., Indicate Type of Property, LAND EXCLUSIVE OF STRUCTURES AND IMPROVEMENTS, BUILDINGS AND OTHER STRUCTURES, MACHINERY PERMANENTLY ATTACHED TO REAL ESTATE, TOTAL TRUE AND FULL VALUE, ASSESSED VALUATIONS (RURAL, ALL OTHER), TOTAL ASSESSED VALUE, FINAL EQUALIZED VALUE.

Table with columns: SOLD FOR TAXES, VALUATIONS BY SCHOOL DISTRICTS AS EQUALIZED BY DEPARTMENT OF TAXATION (District No., Rate, Mills), Tax Including State Homestead, State Tax on Non-Homestead, SPECIAL TAXES, TOTAL TAXES, PAID, WHEN PAID, Number of Receipt, March Settlement 1963, June Settlement 1963, November Settlement 1963, Collections to First Monday in January 1964, Delinquent on First Monday in January 1964, Total Delinquent Tax and Penalty, REMARKS.

Land & Allen's 2nd Add'n to Sylvan Beach, Land & Allen 3rd Add'n to Sylvan Beach, McKisson Acres







Assessment Roll and Tax List of Real Property in the Town of Sylvan, Cass County, Minnesota, for Taxes for the Year 1962.

Cass County, Minnesota, for Taxes for the Year 1962.

133-30 Village of Sylvan North Sylvan Lake Sylvan Beach Sylvan Park Sylvan Lake Land & Allen's 1st Add'n. to Sylvan Beach

Form 50 MILLER-DAVIS CO. MINNEAPOLIS

Table with columns: IN WHOSE NAME ASSESSED, SUBDIVISION, Sec. of Lot, Town or Block, No. of Acres, TRUE AND FULL VALUATIONS (LAND, BUILDINGS, MACHINERY, TOTAL), ASSESSED VALUATIONS (RURAL, ALL OTHER, MACHINERY, Seasonal and Recreational Cabins, TOTAL ASSESSED VALUE), FINAL EQUALIZED VALUE.

Table with columns: VALUATIONS BY SCHOOL DISTRICTS AS EQUALIZED BY DEPARTMENT OF TAXATION, SOLD FOR TAXES, SPECIAL TAXES, SPECIAL TAXES, TOTAL TAXES, PAID, WHEN PAID, Number of Receipt, March Settlement 1961, June Settlement 1961, Penalty, November Settlement 1961, Penalty, Collections to First Monday in January 1961, Penalty, Delinquent on First Monday in January 1961, Total Delinquent Tax and Penalty, REMARKS.

Land & Allen's 2nd Add'n. to Sylvan Beach Land & Allen 3rd Add'n. to Sylvan Beach Hokkisson Acres







Assessment Roll and Tax List of Real Property in the Town of Sylvan

\* Indicate Type of Property: R-Residential, C-Commercial, I-Industrial, U-Utility, F-Farm, L-Lakeshore, T-Timber, M-Mineral

Cass County, Minnesota, for Taxes for the Year 1962.

Table with columns: IN WHOSE NAME ASSESSED, SUBDIVISION, DESCRIPTION OF PROPERTY, TRUE AND FULL VALUATIONS, ASSESSED VALUATIONS, VALUATIONS BY SCHOOL DISTRICTS AS EQUALIZED BY DEPARTMENT OF TAXATION, TAX INCLUDING STATE HOMESTEAD, SPECIAL TAXES, TOTAL TAXES, PAID, WHEN PAID, Number of Receipt, March Settlement 1963, June Settlement 1963, November Settlement 1963, Collections to First Monday in January 1964, Delinquent on First Monday in January 1964, Total Delinquent Tax and Penalty, REMARKS.

13-30 Village of Sylvan North Sylvan Lake Sylvan Beach Sylvan Park Sylvan Beach Land & Allen's 1st Add'n. to Sylvan Beach

Land & Allen's 2nd Add'n. to Sylvan Beach Land & Allen 3rd Add'n. to Sylvan Beach



Assessment Roll and Tax List of Real Property in the Town of Sylvan

Form 50 MILLER-DAVIS CO., MINNEAPOLIS

\* Indicate Type of Property: R-Residential, C-Commercial, I-Industrial, U-Utility, F-Farm, L-Lakeshore, T-Timber, M-Mineral

Table with columns: IN WHOSE NAME ASSESSED, SUBDIVISION, No. School District, TRUE AND FULL VALUATIONS, ASSESSED VALUATIONS, FINAL EQUALIZED VALUE.

Cass County, Minnesota, for Taxes for the Year 1962.

Table with columns: VALUATIONS BY SCHOOL DISTRICTS AS EQUALIZED BY DEPARTMENT OF TAXATION, TAX INCLUDING STATE HOMESTEAD, SPECIAL TAXES, TOTAL TAXES, PAID, WHEN PAID, Number of Receipt, March Settlement 1961, June Settlement 1961, Penalty, November Settlement 1961, Penalty, Collections to First Monday in January 1962, Delinquent on First Monday in January 1962, Total Delinquent Tax and Penalty, REMARKS.

13-30, Village of Sylvan, North Sylvan Lake, Sylvan Beach, Sylvan Beach, Land & Allen's 1st Add'n. to Sylvan Beach, Land & Allen's 2nd Add'n. to Sylvan Beach, Land & Allen's 3rd Add'n. to Sylvan Beach



Assessment Roll and Tax List of Real Property in the Town of Sylvan, Minnesota

Form 30 MILLER-DAVIS, 207 MINNEAPOLIS

\* Indicate Type of Property: R-Residential, C-Commercial, I-Industrial, U-Utility, F-Farm, L-Lakeshore, T-Timber, M-Mineral

Table with columns: IN WHOSE NAME ASSESSED, SUBDIVISION, Sec. of Lot, Town or Block, No. of Acres, No. School District, Indicate Home, Indicate Age, Indicate Type of Property, TRUE AND FULL VALUATIONS (LAND, BUILDINGS, MACHINERY, TOTAL), ASSESSED VALUATIONS (RURAL, ALL OTHER, MACHINERY, Seasonal and Recreational Cabins, TOTAL ASSESSED VALUE), Total Assessed Value as Equalized by the Board of Review, FINAL EQUALIZED VALUE.

Cass County, Minnesota, for Taxes for the Year 1962.

Table with columns: VALUATIONS BY SCHOOL DISTRICTS AS EQUALIZED BY DEPARTMENT OF TAXATION (District No., Rate, Mills), Tax Including State Homestead, State Tax on Non-Homestead, SPECIAL TAXES, TOTAL TAXES, PAID, WHEN PAID, Number of Receipt, March Settlement 1961, June Settlement 1961, Penalty, November Settlement 1961, Collections to First Monday in January 1964, Delinquent on First Monday in January 1961, Total Delinquent Tax and Penalty, REMARKS.

Shady 1968, Village of Sylvan, North Sylvan Beach, Sylvan Beach, Land & Allen's 2nd Add'n, to Sylvan Beach, Land & Allen's 3rd Add'n, to Sylvan Beach, Land & Allen's 1st Add'n, to Sylvan Beach

Land & Allen 3rd Add'n, McKisson Acres to Sylvan Beach















