

Assessment & Tax list - 1961

Sylvan

NAME OF OWNER

TABULAR SCHEDULE OF VALUATIONS,

LEVIED IN THE Town OF Sylvan

RATES AND TAXES

COUNTY OF CASS, STATE OF MINNESOTA

School District No.	VALUATION BY SCHOOL DISTRICTS				RATE OF STATE TAXES		RATE OF COUNTY TAXES										RATE OF TOWN TAXES										RATE OF SCHOOL TAXES			TAXES LEVIED											
	Agricultural Lands	Non-Agricultural Lands	Personal Property	Total Value of all Property except Money and Credits	Total Rate of State Tax	Rev.	R. & B.	Welfare	Bonds and Int.	Welfare	PERA	Total Rate of County Tax	Rev.	R. & B.	State Loan	Total Rate of Town Tax	Local	Special	State Loan	Deficiency	Tuition	Transportation	e.o. PERA	B&I	Total Rate of Sch'l Tax	Total Rate of all Taxes	LOCAL 1 MILL AND SPECIAL SCHOOL TAXES BY DISTRICTS					ALL OTHER TAXES									
																											Local 1 Mill	Special	State Loan	Def.	e.o. PERA	B&I	Little	Total School Taxes	FUNDS	Rate	Amount				
116	47993	100,170	97644	158,886	H. 6.24	36.86	20.57.3				0.89	5.67	134.97	5.15.74		20.74	25.	64.18						7.31	5.66	31.04	2.2	135.39	297.49	1392.17	3573.99	40707	31519	172852	12251	7539.45	State - Non-Homestead.	120272			
			70,723																																	State - Homestead.	100223				
					N.H. 9.12																																County Revenue,	5856.54			
					15.51																																County Road and Bridge,	3177.62			
																																					County Welfare,	9104.07			
																																					Bonds and Interest				
																																						Welfare Ref.	1730.27		
																																						PERA	900.88		
																																						Town Revenue,	794.43		
																																						Town Road and Bridge,	2500.86		
																																						Town State Loan.	3295.29		
																																							School Local 1 Mill,		
																																						School Special,	6552.12		
																																						School State Loan,			
																																						Deficiency	10,197.30		
																																						Tuition			
																																							Transportation		
																																							e.o.	1161.45	
																																						PERA	899.29		
																																							B&I	4931.82	
																																							Little 3 & 5	349.55	

Total Levy, \$ 5,036.32

Total Number of Acres 17,873.87

State of Minnesota, ss. COUNTY OF CASS

Auditor of said County and State aforesaid, do hereby certify that the foregoing is a true and correct Schedule, showing the valuation of all the taxable property, in the Town of Sylvan, in said County, the several rates of Taxation and Totals of the several Tax Funds levied thereon for the year A. D. 1961.

Witness my hand and official seal, this 8th day of January A. D. 1961.

SEAL

R. C. Peterson
County Auditor

By Helen Belden, Deputy

Total Taxes Real Estate 47704.28
Pers. Prop. 332.04
Total 51,036.32

Sylvan's Land & Alliance of Sylvan Lake with Sylvan Polyn's Beach and to Sylvan Shady Shores Add 133-30

Assessment Roll and Tax List of Real Property in the Town of Sylvan, Cass County, Minnesota, for Taxes for the Year 1961.

Cass County, Minnesota, for Taxes for the Year 1961.

* Indicate Type of Property: R-Residential, C-Commercial, I-Industrial, U-Utility, F-Farm, L-Lakeshore, T-Timber, M-Mineral

Table with columns: IN WHOSE NAME ASSESSED, DESCRIPTION OF PROPERTY, TRUE AND FULL VALUATIONS, ASSESSED VALUATIONS, VALUATIONS BY SCHOOL DISTRICTS AS EQUALIZED BY DEPARTMENT OF TAXATION, TAX INCLUDING STATE HOMESTEAD, SPECIAL TAXES, TOTAL TAXES, PAID, WHEN PAID, Number of Receipt, March Settlement 1962, June Settlement 1962, Penalty, November Settlement 1962, Collections to First Monday in January 1963, Delinquent on First Monday in January 1963, Total Delinquent Tax and Penalty, REMARKS.

133-29

133-30

Sylvan's Paid & Allie Addn. to Village of Sylvan North Sylvan & John's Sylvan Park Sylvan Beach & Allie Addn. to Sylvan

Assessment Roll and Tax List of Real Property in the Town of Sylvan, Cass County, Minnesota, for Taxes for the Year 1961.

* Indicate Type of Property: R-Residential, C-Commercial, I-Industrial, U-Utility, F-Farm, L-Lakeshore, T-Timber, M-Mineral

Cass County, Minnesota, for Taxes for the Year 1961.

Table with columns: IN WHOSE NAME ASSESSED, DESCRIPTION OF PROPERTY, TRUCK AND FULL VALUATIONS, ASSESSED VALUATIONS, VALUATIONS BY SCHOOL DISTRICTS AS EQUALIZED BY DEPARTMENT OF TAXATION, TAXES, PAID, WHEN PAID, Number of Receipt, March Settlement, June Settlement, November Settlement, Collections to First Monday in January 1963, Delinquent on First Monday in January 1963, Total Delinquent Tax and Penalty, REMARKS.

133-29

133-30

Sylvan's Address to Village of Sylvan Lake Sylvan Park Sylvan Beach and Allens

Assessment Roll and Tax List of Real Property in the Town of Sylvan, Cass County, Minnesota, for Taxes for the Year 1961.

Table with columns: IN WHOSE NAME ASSESSED, DESCRIPTION OF PROPERTY, TRUE AND FULL VALUATIONS, ASSESSED VALUATIONS, VALUATIONS BY SCHOOL DISTRICTS AS EQUALIZED BY DEPARTMENT OF TAXATION, TAXES, PAID, WHEN PAID, and REMARKS. Includes handwritten entries for John + Myrtle R. Bratrud, Charles B. + Caroline Peterson, George E. + Barbara S. McPheters, Edith O. Lindquist, and Brower Peterson.

132-29

133-30

Sylvan's Add'l Village of Sylvan 1st & 11th Sylvan Polyn's Beach Sylvan Pa. Add'l to Sylvan

Assessment Roll and Tax List of Real Property in the Town of Sylvan, Cass County, Minnesota, for Taxes for the Year 1961.

* Indicate Type of Property: R-Residential, C-Commercial, I-Industrial, U-Utility, F-Farm, L-Lakeshore, T-Timber, M-Mineral

Table with columns: IN WHOSE NAME ASSESSED, DESCRIPTION OF PROPERTY, TRUE AND FULL VALUATIONS, ASSESSED VALUATIONS, and FINAL EQUALIZED VALUE. Includes handwritten entries for various property owners like John W. Peterson, Albert E. + Vernie M. Root, etc.

Table with columns: VALUATIONS BY SCHOOL DISTRICTS AS EQUALIZED BY DEPARTMENT OF TAXATION, TAX INCLUDING STATE HOMESTEAD, SPECIAL TAXES, TOTAL TAXES, PAID, WHEN PAID, and REMARKS. Includes handwritten entries for tax amounts and payment dates.

133-29 132-29

133-30

Sylvan's Adm. Village of Sylvan Lake Sylvan Polyn's Beach Sylvan and Aljos 1st. Sylvan

Assessment Roll and Tax List of Real Property in the Town of Sylvan
* Indicate Type of Property: R-Residential, C-Commercial, I-Industrial, U-Utility, F-Farm, L-Lakeshore, T-Timber, M-Mineral

Table with columns: IN WHOSE NAME ASSESSED, DESCRIPTION OF PROPERTY, TRUE AND FULL VALUATIONS, ASSESSED VALUATIONS, and FINAL EQUALIZED VALUE. Includes entries for Theodore LaBar + Melvin G. Esser, Cassie + Charles S. Petersons, State of Minnesota, Ted LaBar + Melvin Esser, Lawrence Lepka, Minnesota Power + Light Co., Philip J. Holzman, Milton + Eileen Hradsky, and Steven King.

Cass County, Minnesota, for Taxes for the Year 1961.

Table with columns: VALUATIONS BY SCHOOL DISTRICTS AS EQUALIZED BY DEPARTMENT OF TAXATION, TAX INCLUDING STATE HOMESTEAD, SPECIAL TAXES, TOTAL TAXES, PAID, WHEN PAID, Number of Receipt, March Settlement 1962, June Settlement 1962, November Settlement 1962, Collections to First Monday in January 1963, Delinquent on First Monday in January 1963, Total Delinquent Tax and Penalty, REMARKS. Includes entries for Districts 1 through 20 with tax amounts and payment dates.

133-29

133-30

Sylvan's Land & Allens 1st. Beach. Address: the Village of Sylvan Lake, N. Sylvan Park.

Assessment Roll and Tax List of Real Property in the Town of Sylvan, Cass County, Minnesota, for Taxes for the Year 1961.

Cass County, Minnesota, for Taxes for the Year 1961.

Table with columns: IN WHOSE NAME ASSESSED, DESCRIPTION OF PROPERTY, TRUE AND FULL VALUATIONS, VALUATIONS BY SCHOOL DISTRICTS AS EQUALIZED BY DEPARTMENT OF TAXATION, SOLD FOR TAXES, PAID, WHEN PAID, Number of Receipt, March Settlement 1962, June Settlement 1962, Penalty, November Settlement 1962, Penalty, Collections to First Monday in January 1963, Penalty, Delinquent on First Monday in January 1963, Total Delinquent Tax and Penalty, REMARKS.

(Cont. Next Page)

Shady Storgens, Sylvan's Addn. to Village of Sylvan, North Sylvan Polyn's Lake, Sylvan Beach, Sylvan Beach & Allens 1st.

Assessment Roll and Tax List of Real Property in the Town of Sylvan

* Indicate Type of Property: R-Residential, C-Commercial, I-Industrial, U-Utility, F-Farm, L-Lakeshore, T-Timber, M-Mineral

Table with columns: IN WHOSE NAME ASSESSED, DESCRIPTION OF PROPERTY, TRUE AND FULL VALUATIONS, ASSESSED VALUATIONS, VALUATIONS BY SCHOOL DISTRICTS AS EQUALIZED BY DEPARTMENT OF TAXATION, TAX INCLUDING STATE HOMESTEAD, SPECIAL TAXES, TOTAL TAXES, PAID, WHEN PAID, Number of Receipt, March Settlement, June Settlement, Penalty, November Settlement, Collections to First Monday in January 1961, Delinquent on First Monday in January 1963, Total Delinquent Tax and Penalty, REMARKS.

Cass County, Minnesota, for Taxes for the Year 1961.

Table with columns: SOLD FOR TAXES, VALUATIONS BY SCHOOL DISTRICTS AS EQUALIZED BY DEPARTMENT OF TAXATION, TAX INCLUDING STATE HOMESTEAD, SPECIAL TAXES, TOTAL TAXES, PAID, WHEN PAID, Number of Receipt, March Settlement, June Settlement, Penalty, November Settlement, Collections to First Monday in January 1961, Delinquent on First Monday in January 1963, Total Delinquent Tax and Penalty, REMARKS.

133-29

133-30

Sylvan's Land & Alice Addn. to Village of Sylvan Lake Sylvan Polyn's Sylvan Park Sylvan Addn. to Sylvan

Assessment Roll and Tax List of Real Property in the Town of Sylvan

* Indicate Type of Property: R-Residential, C-Commercial, I-Industrial, U-Utility, F-Farm, L-Lakeshore, T-Timber, M-Mineral

Table with columns: IN WHOSE NAME ASSESSED, DESCRIPTION OF PROPERTY, TRUE AND FULL VALUATIONS, ASSESSED VALUATIONS, and FINAL EQUALIZED VALUE. Includes entries for Harold Carlsons, Ole Peterson, Albert E. + Vernie M. Root, and B. B. McKisson.

Cont. Next Page

Cass County, Minnesota, for Taxes for the Year 1961.

Table with columns: VALUATIONS BY SCHOOL DISTRICTS AS EQUALIZED BY DEPARTMENT OF TAXATION, TAXES, PAID, WHEN PAID, Number of Receipt, March Settlement, June Settlement, November Settlement, Collections to First Monday in January, Delinquent on First Monday in January, Total Delinquent Tax and Penalty, and REMARKS. Includes tax amounts and payment dates.

Vertical text on the right edge: Sylvan's Addn. to Village of Sylvan, North Sylvan, Sylvan Park, Sylvan Park, Addn. to Sylvan, Addn. to Sylvan

Assessment Roll and Tax List of Real Property in the Town of Sylvan, Minnesota

* Indicate Type of Property: R-Residential, C-Commercial, I-Industrial, U-Utility, F-Farm, L-Lakeshore, T-Timber, M-Mineral

Table with columns: IN WHOSE NAME ASSESSED, DESCRIPTION OF PROPERTY, TRUE AND FULL VALUATIONS, ASSESSED VALUATIONS, and FINAL EQUALIZED VALUE. Includes handwritten entries for Eastman, Staub, and Benson.

Cass County, Minnesota, for Taxes for the Year 1961.

Table with columns: VALUATIONS BY SCHOOL DISTRICTS AS EQUALIZED BY DEPARTMENT OF TAXATION, Tax Including State Homestead, State Tax on Non-Homestead, SPECIAL TAXES, TOTAL TAXES, PAID, WHEN PAID, Number of Receipt, March Settlement, June Settlement, November Settlement, Collections to First Monday in January 1963, Delinquent on First Monday in January 1963, Total Delinquent Tax and Penalty, REMARKS. Includes handwritten entries for taxes paid and delinquencies.

132-29

132-29

132-29

132-29

132-29

132-29

Sylvan's Addn. to Village of Sylvan Lake

Assessment Roll and Tax List of Real Property in the Town of Sylvan,
* Indicate Type of Property: R-Residential, C-Commercial, I-Industrial, U-Utility, F-Farm, L-Lakeshore, T-Timber, M-Mineral

Form 500 MILNER-DAVIS CO., MINNEAPOLIS

IN WHOSE NAME ASSESSED	DESCRIPTION OF PROPERTY				No. School District	Indicate Homestead Yes or No	Agricultural or Forest Yes or No	* Indicate Type of Property	TRUE AND FULL VALUATIONS			ASSESSED VALUATIONS							FINAL EQUALIZED VALUE		
	SUBDIVISION	Sec. or Lot	Town or Block	Number of Acres of Land					LAND Exclusive of Structures and Improvements	BUILDINGS and Other Structures	MACHINERY Permanently Attached to Real Estate	TOTAL True and Full Value	RURAL		ALL OTHER		MACHINERY Permanently Attached to Real Estate	Seasonal and Recreational Cabins		TOTAL ASSESSED VALUE	Total Assessed Value as Equalized by the Board of Review
													Acres	100ths	Homestead Up to \$4,000 20%	Over \$4,000 and Non-Homestead 33 1/3%					
									Dollars	Dollars	Dollars	Dollars	Dollars	Dollars	Dollars	Dollars	Dollars				
	NEW of NEW	32	133 29		116																
	NW 1/4 of NE 1/4																				
	SW 1/4 of NE 1/4																				
	SE 1/4 of NE 1/4																				
State of Minnesota	GOVT LOT 3																				
	NE 1/4 of NW 1/4																				
	NW 1/4 of NW 1/4																				
	SW 1/4 of NW 1/4																				
	SE 1/4 of NW 1/4																				
	NE 1/4 of SW 1/4																				
	NW 1/4 of SW 1/4																				
	SW 1/4 of SW 1/4																				
	SE 1/4 of SW 1/4																				
	NE 1/4 of SE 1/4																				
	NW 1/4 of SE 1/4																				
	SW 1/4 of SE 1/4																				
	SE 1/4 of SE 1/4																				

Cass County, Minnesota, for Taxes for the Year 1961.

SOLD FOR TAXES	VALUATIONS BY SCHOOL DISTRICTS AS EQUALIZED BY DEPARTMENT OF TAXATION						Tax including State Homestead	State Tax on Non-Homestead	SPECIAL TAXES	SPECIAL TAXES	TOTAL TAXES	PAID	WHEN PAID	Number of Receipt	March Settlement 1962	June Settlement 1962	Penalty	November Settlement 1962	Penalty	Collections to First Monday in January 1963	Penalty	Delinquent on First Monday in January 1963	Total Delinquent Tax and Penalty	REMARKS
	District No.	District No.	District No.	District No.	District No.	District No.																		
	Rate	Rate	Rate	Rate	Rate	Rate																		

Sylvan's Shady Shores

133-30

Land & Allen Addn. to Village of Sylvan North Sylvan Polyn's Lake Sylvan Park

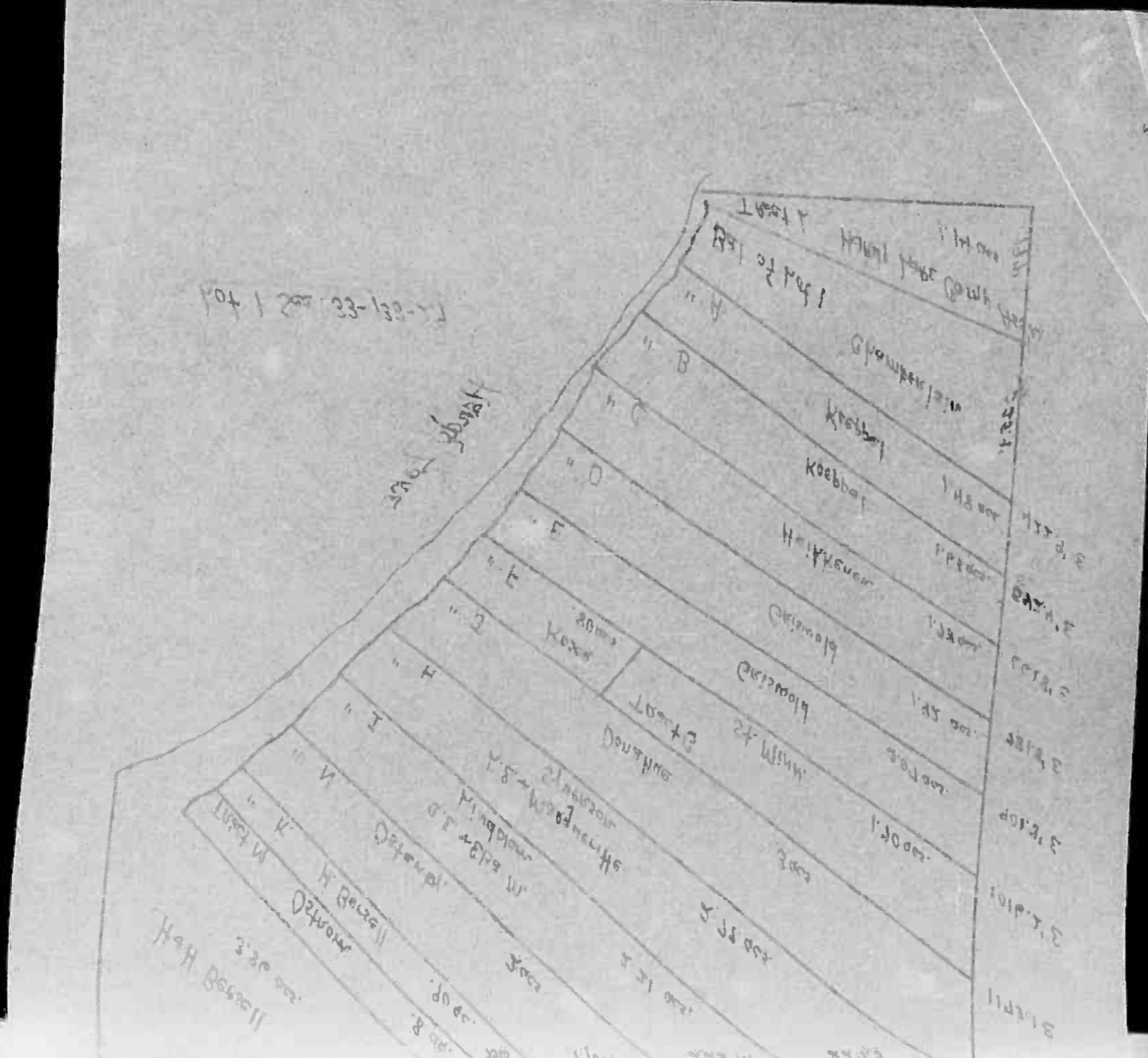
Sylvan Beach

Land & Allen Addn to Sylvan

Assessment Roll and Tax List of Real Property in the Town of Sylvan

Table with columns: IN WHOSE NAME ASSESSED, DESCRIPTION OF PROPERTY, TRIM AND FULL VALUATIONS, ASSESSED VALUATIONS, and TAXES. Includes handwritten entries for various property owners like Michael D. Chamberlain and Joseph Koeppl.

(Cont. Next Page)



Cass County, Minnesota, for Taxes for the Year 1961.

Table with columns: VALUATIONS BY SCHOOL DISTRICTS AN EQUALIZED BY DEPARTMENT OF TAXATION, TAXES, PAID, WHEN PAID, and REMARKS. Includes handwritten entries for tax amounts and payment dates.

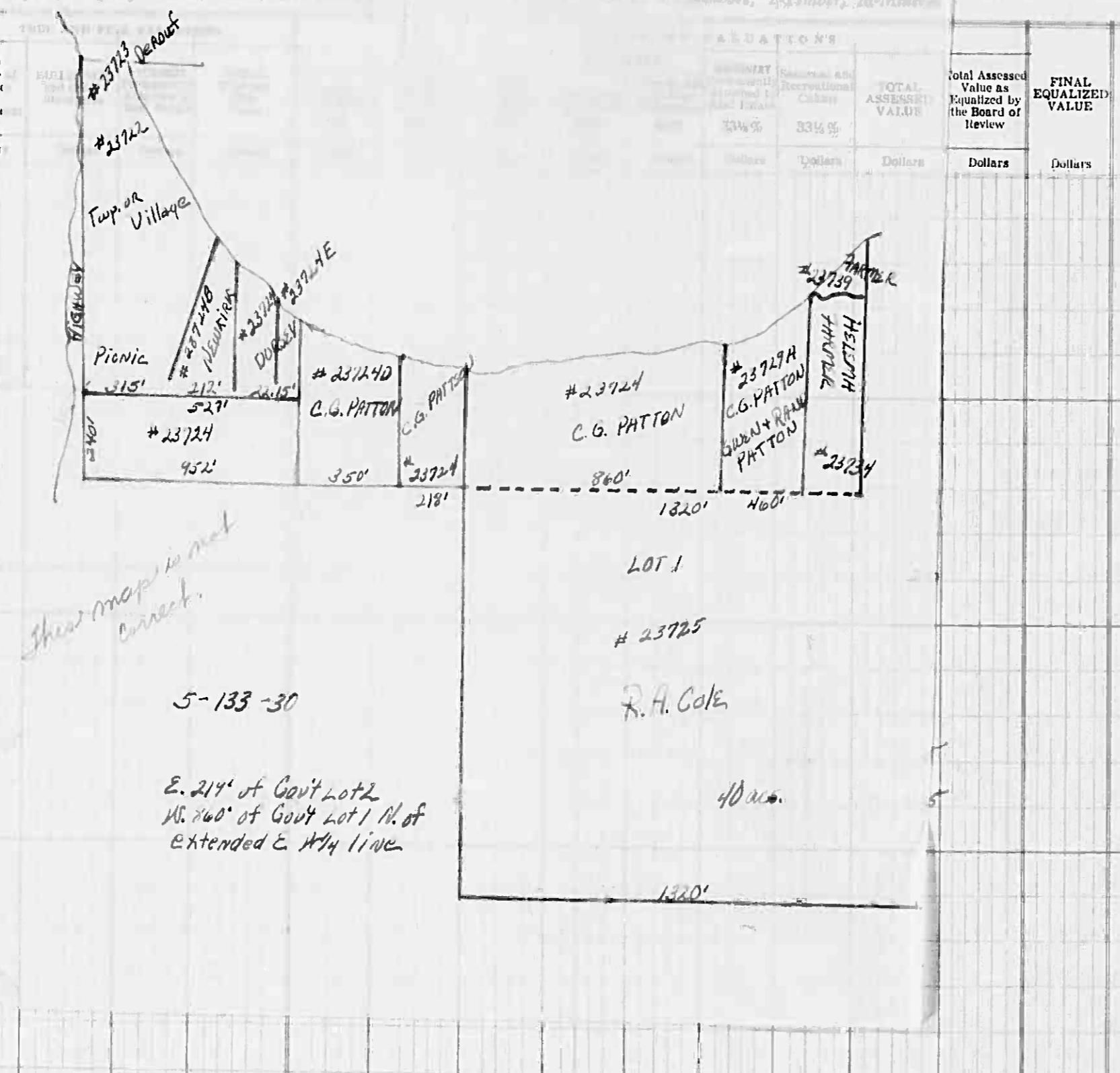
Vertical text on the right edge of the page, possibly a page number or reference code.

Assessment Roll and Tax List of Real Property in the

* Indicate Type of Property: R Residential, L Commercial, M-Minors

IN WHOSE NAME ASSESSED	DESCRIPTION OF PROPERTY			No. School District	Indicate Home-stand Yes or No	Agricultural Acres Yes or No	Indicate Type of Property: R Residential, L Commercial, M-Minors	LAND EXCLUSIVE STRUCTURE AND IMPROVEMENTS	Total Assessed Value as Equalized by the Board of Review	FINAL EQUALIZED VALUE
	SUBDIVISION	Sec. or Lot	Town or Block							
		5	133 30	116						
	NEW of NEW									
	NW of NEW									
	SW of NEW									
Twp. of Sylvan, May, Fairview + Pillsbury Vill.	Part of Cont. Lot 2									
M.W. + Evelyn J. Malone	Part of Cont. Lot 2 E. of Rd.	150			No	Yes	R			
Harriet B. Beran	Cont. Lot 2 W. of S.D.R. #1	150			No	No	T			
Edward J. Bersey	Part of Cont. Lot 2	75			No	Yes	L			
Carroll G. + Euendel Patton	S. 240' of W. 752' of Cont. Lot 2				No	No	L			
"	E. 350' of W. 1102' of Cont. Lot 2 less add.				No	Yes	L			
Edward J. + Agnes Bersey	Part of Cont. Lot 2 E. of Rd.	75			No	"	"			
Carroll G. + Euendel Patton	E. 218' of Cont. Lot 2				No	"	"			
Cyril + Shirley Maurer	Part of Cont. Lot 2				No	No	L			
Agnes Husman	Part of Cont. Lot 2				No	No	L			
Ralph A. + Cora A. Cole	Cont. Lot 2 less that part lying N. of E. 1/4 line, less add. E. 200' of that part of Cont. Lot 1 lying N. of E. 1/4 line	40			Yes	Yes	F			
Helen A. Farmer	Part of Cont. Lot 1 N. of line parallel to W. 1/4 line + 660' N. + 200' W. of E. 1/4 line	325			No	No	L			
Ronald R. Farmer	W. 800' of Lot 1 lying N. of E. + W. 1/4 line				No	Yes	L			
Carroll G. + Euendel Patton	W. 200' of E. 460' of Cont. Lot 1				No	Yes	L			

(Cont. Next Page)



Cass County, Minnesota, for Taxes for the Year 1961.

SOLD FOR TAXES	VALUATIONS BY SCHOOL DISTRICTS AS EQUALIZED BY DEPARTMENT OF TAXATION						Tax including State Homestead	State Tax on Non-Homestead	SPECIAL TAXES	SPECIAL TAXES	TOTAL TAXES	PAID	WHEN PAID	Number of Receipt	March Settlement 1962	June Settlement 1962	Penalty	November Settlement 1962	Penalty	Collections to First Monday in January 1963	Penalty	Delinquent on First Monday in January 1963	Total Delinquent Tax and Penalty	REMARKS	
	District No.	Rate	District No.	Rate	District No.	Rate																			
1																									
2																									
3																									
4		2.11					62.78	1.92			64.70														
5												PAID IN FULL MAY 10 1962	4508												
6							162	04			166		PAID IN FULL MAY 24 1962	12322											
7		123					3660	112			3772		1st Half Paid MAY 31 1962	9352											
8													2nd Half Paid OCT 1 1962	17530											
9		20					322	10			332		PAID IN FULL MAY 31 1962	11461											
10		25					594	18			612		PAID IN FULL MAY 31 1962	11461											
11		25					744	22			766		1st Half Paid MAY 31 1962	17580											
12													2nd Half Paid OCT 1 1962	17580											
13		5					744	22			766		PAID IN FULL MAY 31 1962	11461											
14		5					178	04			182		PAID IN FULL APR 1 1962	7797											
15		5					178	04			182		PAID IN FULL APR 5 1962	7796											
16		#32					952				952		2nd Half Paid OCT 23 1962	20405											
17							484	14			498		1st Half Paid MAY 31 1962	14781											
18							644	18			662		2nd Half Paid OCT 1 1962	17606											
19		24					714	22			736		IN HALF PAID MAY 24 1962	12325											
20		155					4012	142			4154		PAID IN FULL MAY 31 1962	11461											
		#32					1612				1612														
		573					18594	584			19178														
		625					20206				20206														

Sylvan's Addn. to Village of Sylvan Lake
Sylvan's Addn. to Village of Sylvan Park
Sylvan's Addn. to Village of Sylvan Park

Assessment Roll and Tax List of Real Property in the

Town of Sylvan

Indicate Type of Property: R-Residential, C-Commercial, I-Industrial, U-Utility, F-Farm, L-Lakeshore, T-Timber, M-Mineral

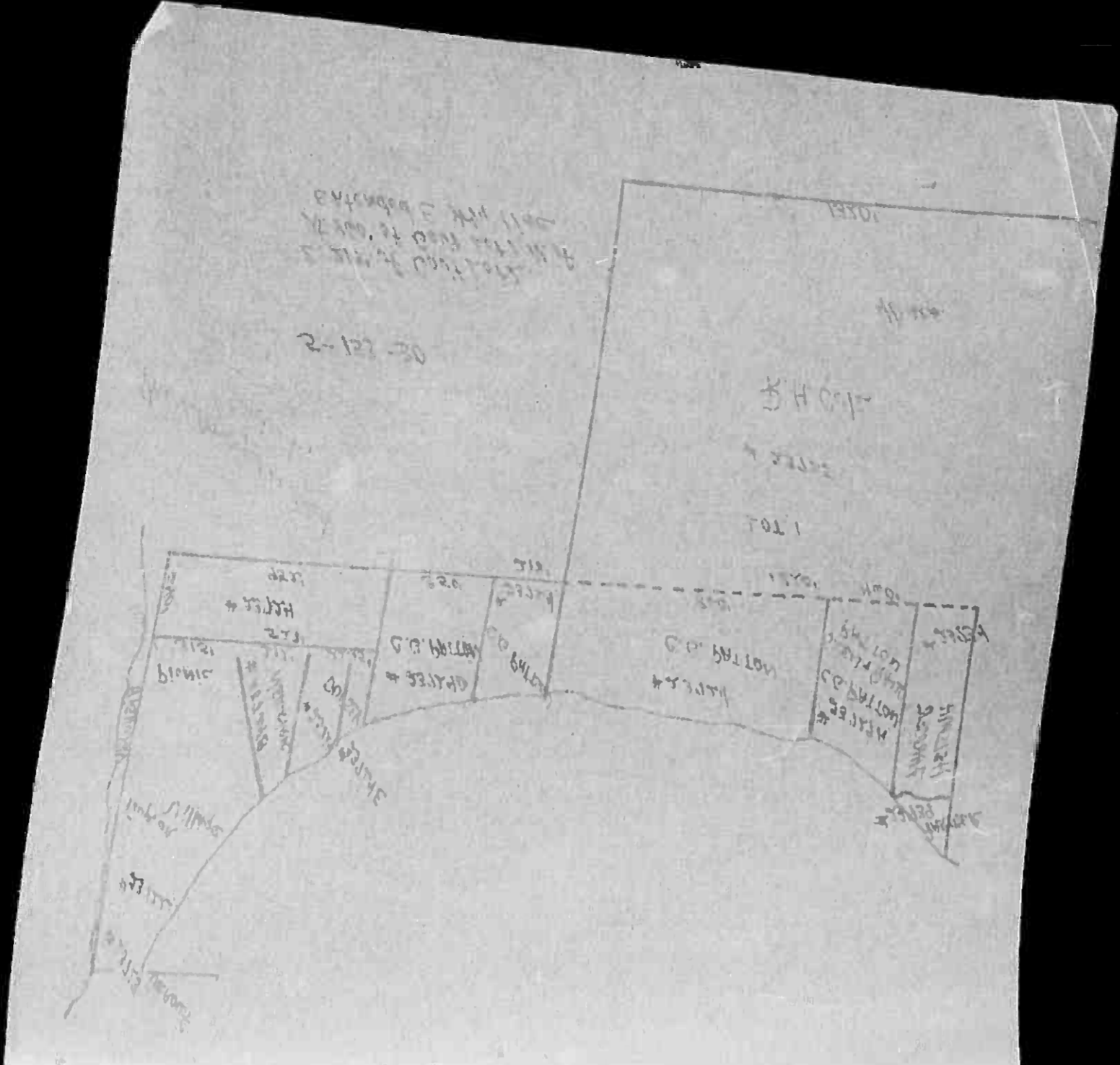


Table with columns: IN WHOSE NAME ASSESSED, DESCRIPTION OF PROPERTY, TRUE AND FULL VALUATIONS (RURAL, ALL OTHER, MACHINERY), and FINAL EQUALIZED VALUE. Includes handwritten entries for property owners like 'M.W. & Evelyn S. Malone' and 'Harriet B. Berand'.

Cass County, Minnesota, for Taxes for the Year 1961.

Table with columns: VALUATIONS BY SCHOOL DISTRICTS, TAXES (SPECIAL, TOTAL), PAID, WHEN PAID, Number of Receipts, and Total Delinquent Tax and Penalty. Includes handwritten entries for property numbers and tax amounts.

132-29

133-30

Sylvan, Minn. Village of Sylvan, Minn. Sylvan, Minn. Village of Sylvan, Minn. Sylvan, Minn. Village of Sylvan, Minn.

Assessment Roll and Tax List of Real Property in the Town of Sylvan

* Indicate Type of Property: R-Residential, C-Commercial, I-Industrial, U-Utility, F-Farm, L-Lakeshore, T-Timber, M-Mineral

Table with columns: IN WHOSE NAME ASSESSED, DESCRIPTION OF PROPERTY, TRUE AND FULL VALUATIONS, ASSESSED VALUATIONS, and FINAL EQUALIZED VALUE.

Cass County, Minnesota, for Taxes for the Year 1961.

Table with columns: VALUATIONS BY SCHOOL DISTRICTS AS EQUALIZED BY DEPARTMENT OF TAXATION, Tax Including State Homestead, State Tax on Non-Homestead, SPECIAL TAXES, TOTAL TAXES, PAID, WHEN PAID, Number of Receipt, March Settlement 1962, June Settlement 1962, November Settlement 1962, Collections to First Monday in January 1963, Delinquent on First Monday in January 1963, Total Delinquent Tax and Penalty, REMARKS.

132-29
133-30

Sylvan's Add'l. Village of Sylvan North Sylvan North Sylvan Sylvan Land & Aleria

Assessment Roll and Tax List of Real Property in the Town of Sylvan

* Indicate Type of Property: R-Residential, C-Commercial, I-Industrial, U-Utility, F-Farm, L-Lakeshore, T-Timber, M-Mineral

Cass County, Minnesota, for Taxes for the Year 1961.

Table with columns: IN WHOSE NAME ASSESSED, DESCRIPTION OF PROPERTY, TRUE AND FULL VALUATIONS, ASSESSED VALUATIONS, VALUATIONS BY SCHOOL DISTRICTS AS EQUALIZED BY DEPARTMENT OF TAXATION, Tax Including State Homestead, State Tax on Non-Homestead, SPECIAL TAXES, TOTAL TAXES, PAID, WHEN PAID, Number of Receipt, March Settlement 1962, June Settlement 1962, Penalty, November Settlement 1962, Penalty, Collections to First Monday in January 1963, Penalty, Delinquent on First Monday in January 1963, Total Delinquent Tax and Penalty, REMARKS.

132-29

153-30

Sylvan Land & A...

Addn to Village of Sylvan

North Sylvan Town's

Sylvan Park

Sylvan Land & A...

Assessment Roll and Tax List of Real Property in the Town of Sylvan

* Indicate Type of Property: R-Residential, C-Commercial, I-Industrial, U-Utility, F-Farm, L-Lakeshore, T-Timber, M-Mineral

Form 500 MILLER-DAVIS CO., MINNEAPOLIS

Table with columns: IN WHOSE NAME ASSESSED, DESCRIPTION OF PROPERTY, TRUE AND FULL VALUATIONS (RURAL, ALL OTHER, MACHINERY, etc.), and various tax-related fields.

Cass County, Minnesota, for Taxes for the Year 1961.

Table with columns: VALUATIONS BY SCHOOL DISTRICTS AS EQUALIZED BY DEPARTMENT OF TAXATION, Tax including State Homestead, SPECIAL TAXES, TOTAL TAXES, PAID, WHEN PAID, and REMARKS.

Sylvan's Add'n to Village of Sylvan North Sylvan Polyn's Sylvan Park Sylvan Add'n to Sylvan Beach

Assessment Roll and Tax List of Real Property in the Town of Sylvan

* Indicate Type of Property: R-Residential, C-Commercial, I-Industrial, U-Utility, F-Farm, L-Lakeshore, T-Timber, M-Mineral

Table with columns: IN WHOSE NAME ASSESSED, DESCRIPTION OF PROPERTY, TRUE AND FULL VALUATIONS, ASSESSED VALUATIONS, and FINAL EQUALIZED VALUE.

Cass County, Minnesota, for Taxes for the Year 1961.

Table with columns: VALUATIONS BY SCHOOL DISTRICTS AS EQUALIZED BY DEPARTMENT OF TAXATION, Tax including State Homestead, State Tax on Non-Homestead, SPECIAL TAXES, TOTAL TAXES, PAID, WHEN PAID, Number of Receipt, March Settlement, June Settlement, Penalty, November Settlement, Collections to First Monday in January 1961, Delinquent on First Monday in January 1963, Total Delinquent Tax and Penalty, and REMARKS.

Sylvan's Land & Alleg... Shady Shores... Addn. to Village of Sylvan... Sylvan Polys's... Sylvan Park... Sylvan Beach... Addn. to Sylvan...

Assessment Roll and Tax List of Real Property in the Town of Sylvan

Cass County, Minnesota, for Taxes for the Year 1961.

* Indicate Type of Property: R-Residential, C-Commercial, I-Industrial, U-Utility, F-Farm, L-Lakeshore, T-Timber, M-Mineral

Table with columns: IN WHOSE NAME ASSESSED, DESCRIPTION OF PROPERTY, TRUE AND FULL VALUATIONS, ASSESSED VALUATIONS, VALUATIONS BY SCHOOL DISTRICTS AS EQUALIZED BY DEPARTMENT OF TAXATION, TAX INCLUDING STATE HOMESTEAD, SPECIAL TAXES, TOTAL TAXES, PAID, WHEN PAID, Number of Receipt, March Settlement 1962, June Settlement 1962, November Settlement 1962, Collections to First Monday in January 1963, Delinquent on First Monday in January 1963, Total Delinquent Tax and Penalty, REMARKS.

(Cont. Next Page)

Sylvan's Land & Alter... Addn to Village of Sylvan Lake... Sylvan Park... Sylvan Beach... Addn to Sylvan Beach

Assessment Roll and Tax List of Real Property in the Town of Sylvan

* Indicate Type of Property: R-Residential, C-Commercial, I-Industrial, U-Utility, F-Farm, L-Lakeshore, T-Timber, M-Mineral

Form 500 - GILLESPIE & CO., MINNEAPOLIS

Table with columns: IN WHOSE NAME ASSESSED, DESCRIPTION OF PROPERTY, TRUE AND FULL VALUATIONS, ASSESSED VALUATIONS, and FINAL EQUALIZED VALUE. Includes handwritten entries for John J. Parkes, C. N. Sliter, and Alice Anderson, et al.

Cass County, Minnesota, for Taxes for the Year 1961.

Table with columns: VALUATIONS BY SCHOOL DISTRICTS AN EQUALIZED BY DEPARTMENT OF TAXATION, Tax Including State Homestead, State Tax on Non-Homestead, SPECIAL TAXES, TOTAL TAXES, PAID, WHEN PAID, Number of Receipt, March Settlement, June Settlement, November Settlement, Collections to First Monday in January 1963, Delinquent on First Monday in January 1963, Total Delinquent Tax and Penalty, and REMARKS. Includes handwritten entries for tax payments and dates.

Sylvan's Land & Acreage Addn. to Village of Sylvan North Sylvan town's Lake Sylvan Beach Sylvan's Land & Acreage Addn. to Sylvan

Assessment Roll and Tax List of Real Property in the Town of Sylvan

* Indicate Type of Property: R-Residential, C-Commercial, I-Industrial, U-Utility, F-Farm, L-Lakeshore, T-Timber, M-Mineral

Cass County, Minnesota, for Taxes for the Year 1961.

Table with columns: IN WHOSE NAME ASSESSED, DESCRIPTION OF PROPERTY, TRUE AND FULL VALUATIONS, ASSESSED VALUATIONS, VALUATIONS BY SCHOOL DISTRICTS AS EQUALIZED BY DEPARTMENT OF TAXATION, Tax Including State Homestead, State Tax on Non-Homestead, SPECIAL TAXES, TOTAL TAXES, PAID, WHEN PAID, Number of Receipt, March Settlement 1962, June Settlement 1962, Penalty, November Settlement 1962, Collections to First Monday in January 1963, Delinquent on First Monday in January 1963, Total Delinquent Tax and Penalty, REMARKS.

133-29

Arthur S. Towler

Melvin + Milda Hime

Minnesota Power + Light Co.

Melvin + Milda Hime

Minnesota Power + Light Co.

Sylvan's Land & Alter... Add'n to Village of Sylvan Lake... Sylvan Beach... Sylvan Park... Sylvan Land & Alter... Add'n to Village of Sylvan Lake

Assessment Roll and Tax List of Real Property in the Town of Sylvan

* Indicate Type of Property: R-Residential, C-Commercial, I-Industrial, U-Utility, F-Farm, L-Lakeshore, T-Timber, M-Mineral

Form 501 Miller-Davis Co., Minneapolis

Table with columns: IN WHOSE NAME ASSESSED, DESCRIPTION OF PROPERTY, TRUE AND FULL VALUATIONS, ASSESSED VALUATIONS, and FINAL EQUALIZED VALUE.

Cass County, Minnesota, for Taxes for the Year 1961.

Table with columns: SOLD FOR TAXES, VALUATIONS BY SCHOOL DISTRICTS AS EQUALIZED BY DEPARTMENT OF TAXATION, Tax Including State Homestead, State Tax on Non-Homestead, SPECIAL TAXES, TOTAL TAXES, PAID, WHEN PAID, Number of Receipt, March Settlement, June Settlement, November Settlement, Penalty, Collections to First Monday in January 1963, Delinquent on First Monday in January 1963, Total Delinquent Tax and Penalty, REMARKS.

Sylvan's Land & Acreage Addn. to Village of Sylvan

Assessment Roll and Tax List of Real Property in the Town of Sylvan, Cass County, Minnesota

Cass County, Minnesota, for Taxes for the Year 1961.

Table with columns: IN WHOSE NAME ASSESSED, DESCRIPTION OF PROPERTY, TRUE AND FULL VALUATIONS, ASSESSED VALUATIONS, VALUATIONS BY SCHOOL DISTRICTS AS EQUALIZED BY DEPARTMENT OF TAXATION, TAX INCLUDING STATE HOMESTEAD, SPECIAL TAXES, TOTAL TAXES, PAID, WHEN PAID, Number of Receipt, March Settlement, June Settlement, November Settlement, Collections to First Monday in January, Delinquent on First Monday in January, Total Delinquent Tax and Penalty, REMARKS.

Sylvan's Land & A... Addn. to Village of Sylvan... North Sylvan... Sylvan... Land & A... Addn. to Sylvan...

Assessment Roll and Tax List of Real Property in the Town of Sylvan

* Indicate Type of Property: R-Residential, C-Commercial, I-Industrial, U-Utility, F-Farm, L-Lakeshore, T-Timber, M-Mineral

Form SCD - MILLER-DAVIS CO., MINNEAPOLIS

Table with columns: IN WHOSE NAME ASSESSED, DESCRIPTION OF PROPERTY, TRUE AND FULL VALUATIONS, ASSESSED VALUATIONS, TOTAL ASSESSED VALUE, FINAL EQUALIZED VALUE.

Cass County, Minnesota, for Taxes for the Year 1961.

Table with columns: VALUATIONS BY SCHOOL DISTRICTS AS EQUALIZED BY DEPARTMENT OF TAXATION, Tax including State Homestead, State Tax on Non-Homestead, SPECIAL TAXES, TOTAL TAXES, PAID, WHEN PAID, Number of Receipt, March Settlement 1962, June Settlement 1962, Penalty, November Settlement 1962, Collections to First Monday in January 1963, Delinquent on First Monday in January 1963, Total Delinquent Tax and Penalty, REMARKS.

Sylvan's Land & Acreage Addn. to Village of Sylvan North Sylvan North Sylvan Beach Sylvan Beach Addn. to Village of Sylvan Beach

Assessment Roll and Tax List of Real Property in the Town of Sylvan

* Indicate Type of Property: R-Residential, C-Commercial, I-Industrial, U-Utility, F-Farm, L-Lakeshore, T-Timber, M-Mineral

Cass County, Minnesota, for Taxes for the Year 1961.

Table with columns: IN WHOSE NAME ASSESSED, DESCRIPTION OF PROPERTY, TRU AND FULL VALUATIONS, ASSESSED VALUATIONS, and FINAL EQUALIZED VALUE.

Table with columns: VALUATIONS BY SCHOOL DISTRICTS AS EQUALIZED BY DEPARTMENT OF TAXATION, Tax including State Homestead, State Tax on Non-Homestead, SPECIAL TAXES, TOTAL TAXES, PAID, WHEN PAID, Number of Receipt, March Settlement 1962, June Settlement 1962, November Settlement 1962, Collections to First Monday in January 1963, Delinquent on First Monday in January 1963, Total Delinquent Tax and Penalty, REMARKS.

(Cont. Next Page)

Sylvan's Land & A... Addn. to Village of Sylvan Lake North Sylvan No. 10171's Sylvan Beach Addn. to Sylvan Beach

Assessment Roll and Tax List of Real Property in the Town of Sylvan, * Indicate Type of Property: R-Residential, C-Commercial, I-Industrial, U-Utility, F-Farm, L-Lakeshore, T-Timber, M-Mineral

EDMUND MILLER-DAVIS CO., MINNEAPOLIS

Table with columns: IN WHOSE NAME ASSESSED, DESCRIPTION OF PROPERTY, TRUE AND FULL VALUATIONS, ASSESSED VALUATIONS, and FINAL EQUALIZED VALUE. Includes handwritten entries for 'Mississippi Power & Light Co. Plants' and 'Wesley E. Peterson'.

Cass County, Minnesota, for Taxes for the Year 1961.

Table with columns: VALUATIONS BY SCHOOL DISTRICTS AS EQUALIZED BY DEPARTMENT OF TAXATION, Tax Including State Homestead, SPECIAL TAXES, TOTAL TAXES, PAID, WHEN PAID, Number of Receipt, March Settlement 1962, June Settlement 1962, November Settlement 1962, Collections to First Monday in January 1963, Delinquent on First Monday in January 1963, Total Delinquent Tax and Penalty, and REMARKS. Includes handwritten entries for 'PAID IN FULL' and 'SOLD FOR TAXES'.

133-29 133-30

Sylvan's Land & A... Addn. to Village of Sylvan... Sylvan Park... Sylvan Beach... Addn. to Village of Sylvan Beach

Assessment Roll and Tax List of Real Property in the Town of Sylvan

Form 500 MILLER-DAVIS CO., MINNEAPOLIS

* Indicate Type of Property: R-Residential, C-Commercial, I-Industrial, U-Utility, F-Farm, L-Lakeshore, T-Timber, M-Mineral

Table with columns: IN WHOSE NAME ASSESSED, DESCRIPTION OF PROPERTY, TRUP AND FULL VALUATIONS, ASSESSED VALUATIONS, FINAL EQUALIZED VALUE.

Cass County, Minnesota, for Taxes for the Year 1961.

Table with columns: VALUATIONS BY SCHOOL DISTRICTS AS EQUALIZED BY DEPARTMENT OF TAXATION, Tax Including State Homestead, State Tax on Non-Homestead, SPECIAL TAXES, TOTAL TAXES, PAID, WHEN PAID, Number of Receipt, March Settlement, June Settlement, November Settlement, Collections to First Monday in January 1963, Delinquent on First Monday in January 1963, Total Delinquent Tax and Penalty, REMARKS.

Sylvan's Land & Alike Addn. to Village of Sylvan

Sylvan Land & Alike's Beach

Assessment Roll and Tax List of Real Property in the Town of Sylvan, Minnesota

* Indicate Type of Property: R-Residential, C-Commercial, I-Industrial, U-Utility, F-Farm, L-Lakeshore, T-Timber, M-Mineral

Table with columns: IN WHOSE NAME ASSESSED, SUBDIVISION, No. School District, Indicate Homestead or No, Acreage, Indicate Type of Property, TRUE AND FULL VALUATIONS (LAND, BUILDINGS, MACHINERY, TOTAL), ASSESSED VALUATIONS (RURAL, ALL OTHER, MACHINERY, Seasonal and Recreational Cabins, TOTAL ASSESSED VALUE), Total Assessed Value as Equalized by the Board of Review, FINAL EQUALIZED VALUE.

Cass County, Minnesota, for Taxes for the Year 1961.

Table with columns: SOLD FOR TAXES, VALUATIONS BY SCHOOL DISTRICTS AS EQUALIZED BY DEPARTMENT OF TAXATION (District No., Rate, Mills), Tax including State Homestead, State Tax on Non-Homestead, SPECIAL TAXES, TOTAL TAXES, PAID, WHEN PAID (Month, Day, Year), Number of Receipt, March Settlement 1962, June Settlement 1962, Penalty, November Settlement 1962, Penalty, Collections to First Monday in January 1963, Penalty, Delinquent on First Monday in January 1961, Total Delinquent Tax and Penalty, REMARKS.

132-29

133-30

Sylvan Park Orth Sylvan Lake

Sylvan's Land & Allens 2nd, Shady Spores, Sylvan Beach, Addn. to Sylvan Beach, Sylvan Beach, Addn. to Sylvan Beach, Sylvan Beach, Addn. to Sylvan Beach

Assessment Roll and Tax List of Real Property in the Town of Sylvan, Minnesota

Form 5C - MILLER-DAVIS CO., MINNEAPOLIS

* Indicate Type of Property: R-Residential, C-Commercial, I-Industrial, U-Utility, F-Farm, L-Lakeshore, T-Timber, M-Mineral

DESCRIPTION OF PROPERTY

TRUE AND FULL VALUATIONS

ASSESSED VALUATIONS

VALUATIONS BY SCHOOL DISTRICTS AS EQUALIZED BY DEPARTMENT OF TAXATION

Main data table with columns for property description, valuations, taxes, and payments. Includes handwritten entries for 'Carlyon's Sylvan Pk.' and 'Township of Sylvan'.

Cass County, Minnesota, for Taxes for the Year 1961.

133-29, 133-30, Sylvan Park, Sylvan Lake, Sylvan Park, Sylvan Lake

Sylvan's Land & Alys Beach, Sylvan's Land & Alys 3rd, Sylvan's Land & Alys 1st

Assessment Roll and Tax List of Real Property in the Town of Sylvan, Minnesota

* Indicate Type of Property: R-Residential, C-Commercial, I-Industrial, U-Utility, F-Farm, L-Lakeshore, T-Timber, M-Mineral

132-29 133-30

Sylvan Village of Sylvan Lake

Sylvan Land & Allens 1st

Sylvan Land & Allens 2nd

Sylvan Land & Allens 3rd

Table with columns: IN WHOSE NAME ASSESSED, DESCRIPTION OF PROPERTY, TRUL AND FULL VALUATIONS, ASSESSED VALUATIONS, and FINAL EQUALIZED VALUE. Includes handwritten entries for Roy Bertuleit and Ruth Bromnes.

Cass County, Minnesota, for Taxes for the Year 1961.

Table with columns: VALUATIONS BY SCHOOL DISTRICTS AS EQUALIZED BY DEPARTMENT OF TAXATION, TAXES, PAID, WHEN PAID, and REMARKS. Includes handwritten annotations and numerical data.

Sylvan's Land & Allens 2nd

Sylvan's Land & Allens 3rd

Sylvan's Land & Allens 1st

Sylvan's Land & Allens 2nd

Sylvan's Land & Allens 3rd

Assessment Roll and Tax List of Real Property in the Town of Sylvan, Minnesota

* Indicate Type of Property: R-Residential, C-Commercial, I-Industrial, U-Utility, F-Farm, L-Lakeshore, T-Timber, M-Mineral

Table with columns: IN WHOSE NAME ASSESSED, SUBDIVISION, DESCRIPTION OF PROPERTY, TRUE AND FULL VALUATIONS, ASSESSED VALUATIONS, and FINAL EQUALIZED VALUE. Includes handwritten entries for Arthur Edward Bondeson, Frank Roberts, Fred W. + Loretta M. Betchers, Stanton E. + Marcella E. Christie, Lynn M. + Rose M. Vinton, Henry D. + Bessie M. Covel, and Luson + Joseph Sack.

Cass County, Minnesota, for Taxes for the Year 1961.

Table with columns: SOLD FOR TAXES, VALUATIONS BY SCHOOL DISTRICTS AS EQUALIZED BY DEPARTMENT OF TAXATION, SPECIAL TAXES, TOTAL TAXES, PAID, WHEN PAID, Number of Receipt, March Settlement, June Settlement, November Settlement, Collections to First Monday in January 1963, Delinquent on First Monday in January 1963, Total Delinquent Tax and Penalty, and REMARKS. Includes handwritten notes like '20731', '14786', '4493', '12362', '20739', '14812', '10112', '20731', '14786', '11682', '1976', '11824', '15724', '11681', '11869', '11675'.

133-28 133-30 Sylvan Beach Village of Sylvan Lake

Sylvan's Snaky Shores Land & Aliens 2nd. Addn. to Sylvan Beach Land & Aliens 3rd. Addn. to Sylvan Beach Land & Aliens 1st. Addn. to Sylvan Beach

Assessment Roll and Tax List of Real Property in the Town of Sylvan, Cass County, Minnesota, for Taxes for the Year 1961.

* Indicate Type of Property: R-Residential, C-Commercial, I-Industrial, U-Utility, F-Farm, L-Lakeshore, T-Timber, M-Mineral

Table with columns: IN WHOSE NAME ASSESSED, SUBDIVISION, No. School District, Indicate Homestead, Acreage, Type of Property, TRUE AND FULL VALUATIONS, ASSESSED VALUATIONS, and FINAL EQUALIZED VALUE.

132-29, 132-30, 132-31, 132-32, 132-33, 132-34, 132-35, 132-36, 132-37, 132-38, 132-39, 132-40, 132-41, 132-42, 132-43, 132-44, 132-45, 132-46, 132-47, 132-48, 132-49, 132-50

Cass County, Minnesota, for Taxes for the Year 1961.

Table with columns: SOLD FOR TAXES, VALUATIONS BY SCHOOL DISTRICTS AS EQUALIZED BY DEPARTMENT OF TAXATION, Tax Including State Homestead, State Tax on Non-Homestead, SPECIAL TAXES, TOTAL TAXES, PAID, WHEN PAID, Number of Receipt, March Settlement, June Settlement, November Settlement, Collections to First Monday in January, Delinquent on First Monday in January, Total Delinquent Tax and Penalty, REMARKS.

132-29, 132-30, 132-31, 132-32, 132-33, 132-34, 132-35, 132-36, 132-37, 132-38, 132-39, 132-40, 132-41, 132-42, 132-43, 132-44, 132-45, 132-46, 132-47, 132-48, 132-49, 132-50

Assessment Roll and Tax List of Real Property in the Town of Sylvan, Cass County, Minnesota

132-29

133-30

Sylvan's Shady Shores

Sylvan's Park

Sylvan Beach

and Allens Ist. Adm. to Sylvan Beach

Land & Allens 2nd Adm. to Sylvan Beach

Land & Allens 3rd Adm. to Sylvan Beach

Table with columns: IN WHOSE NAME ASSESSED, SUBDIVISION, DESCRIPTION OF PROPERTY, TRUE AND FULL VALUATIONS, ASSESSED VALUATIONS, VALUATIONS BY SCHOOL DISTRICTS AS EQUALIZED BY DEPARTMENT OF TAKATION, TAX INCLUDING STATE HOMESTEAD, SPECIAL TAXES, TOTAL TAXES, PAID, WHEN PAID, Number of Receipt, March Settlement, June Settlement, November Settlement, Penalty, Collections to First Monday in January 1963, Delinquent on First Monday in January 1963, Total Delinquent Tax and Penalty, REMARKS.

Assessment Roll and Tax List of Real Property in the Town of Sylvan

Cass County, Minnesota, for Taxes for the Year 1961.

Table with columns: IN WHOSE NAME ASSESSED, SUBDIVISION, DESCRIPTION OF PROPERTY, TRUE AND FULL VALUATIONS, ASSESSED VALUATIONS, VALUATIONS BY SCHOOL DISTRICTS AS EQUALIZED BY DEPARTMENT OF TAXATION, TAXES, PAID, WHEN PAID, Number of Receipt, March Settlement 1962, June Settlement 1962, Penalty, November Settlement 1962, Collections to First Monday in January 1963, Delinquent on First Monday in January 1963, Total Delinquent Tax and Penalty, REMARKS.

Sylvan Shady Shores, Sylvan Village of Sylvan, Sylvan Beach, and Aliens 1st. Adm. to Sylvan Beach

Land & Aliens 2nd. Adm. to Sylvan Beach, Land & Aliens 3rd. Adm. to Sylvan Beach

Summary totals: 130, 178 = 258, 4126, 3863, 220, 8224, 2094, 1806, 1824

Assessment Roll and Tax List of Real Property in the Town of Sylvan

Cass County, Minnesota, for Taxes for the Year 1961.

Table with columns for Description of Property, True and Full Valuations, Assessed Valuations, Valuations by School Districts, and Tax details. Includes handwritten entries for property owners and tax amounts.

Vertical text on the left margin: Sylvan's Shady Shores, Village of Sylvan, and Sylvan Beach.

Vertical text on the right margin: Addn. to Sylvan Beach, and Addn. to Sylvan Beach.

Assessment Roll and Tax List of Real Property in the Town of Sylvan

* Indicate Type of Property: R-Residential, C-Commercial, I-Industrial, U-Utility, F-Farm, L-Lakeshore, T-Timber, M-Mineral

FOURTH QUARTER MILLER-DAVIS CO., MINNEAPOLIS

Table with columns: IN WHOSE NAME ASSESSED, SUBDIVISION, No. School District, Ind. or Agr. or M. or U., No. of Acres, TRUE AND FULL VALUATIONS (LAND, BUILDINGS, MACHINERY, TOTAL), ASSESSED VALUATIONS (RURAL, ALL OTHER, MACHINERY, Seasonal and Recreational Cabins, TOTAL ASSESSED VALUE), Total Assessed Value as Equalized by the Board of Review, FINAL EQUALIZED VALUE.

Sylvan's Shady Shores, Village of Sylvan, Sylvan Park or Sylvan Lake, Sylvan Beach, and Allens Ist. Adm. to Sylvan Beach

Cass County, Minnesota, for Taxes for the Year 1961.

Table with columns: SOLD FOR TAXES, VALUATIONS BY SCHOOL DISTRICTS AS EQUALIZED BY DEPARTMENT OF TAXATION (District No., Rate, Mills), Tax Including State Homestead, State Tax on Non-Homestead, SPECIAL TAXES, TOTAL TAXES, PAID, WHEN PAID (Month, Day, Year), Number of Receipt, March Settlement 1962, June Settlement 1962, Penalty, November Settlement 1962, Penalty, Collections to First Monday in January 1963, Penalty, Delinquent on First Monday in January 1963, Total Delinquent Tax and Penalty, REMARKS.

Lead & Allens 2nd. Adm. to Sylvan Beach, Lead & Allens 3rd. Adm. to Sylvan Beach

Assessment Roll and Tax List of Real Property in the Town of Sylvan, Minnesota

* Indicate Type of Property: R-Residential, C-Commercial, I-Industrial, U-Utility, F-Farm, L-Lakeshore, T-Timber, M-Mineral

Form 50-MILLER-DAVIS CO., MINNEAPOLIS

Sylvan's Shady Shores, Village of Sylvan, Sylvan Park, Sylvan Beach, Sylvan Beach, and Allens 1st, Add'n. to Sylvan Beach

Table with columns: IN WHOSE NAME ASSESSED, DESCRIPTION OF PROPERTY, TRUE AND FULL VALUATIONS, ASSESSED VALUATIONS, and FINAL EQUALIZED VALUE. Includes entries for Herbert + Olga H. Edwardson, Oswald & Karlosky, Ralph R. + Grace M. Bonkarr, etc.

Cass County, Minnesota, for Taxes for the Year 1961.

Table with columns: SOLD FOR TAXES, VALUATIONS BY SCHOOL DISTRICTS AS EQUALIZED BY DEPARTMENT OF TAXATION, Tax Including State Homestead, SPECIAL TAXES, TOTAL TAXES, PAID, WHEN PAID, Number of Receipt, March Settlement, June Settlement, November Settlement, Collections to First Monday in January, Delinquent on First Monday in January, Total Delinquent Tax and Penalty, REMARKS. Includes entries for 100, 15, 15, 100, 110, 15, 15, 110, 12, 52, 7, 84, 7, 14, 10, 116, 20, 10, 10, 10, 616, 112, 216, 696, 18324, 25288.

Add'n. to Sylvan Beach

Assessment Roll and Tax List of Real Property in the Town of Sylvan

* Indicate Type of Property: R-Residential, C-Commercial, I-Industrial, U-Utility, F-Farm, L-Lakeshore, T-Timber, M-Mineral

132-29 Sylvan's Shady Shores
133-30 Sylvan's Village of Sylvan
134-31 Sylvan's Park
135-32 Sylvan's Beach
136-33 Sylvan's Beach

Table with columns: IN WHOSE NAME ASSESSED, SUBDIVISION, DESCRIPTION OF PROPERTY, TRUE AND FULL VALUATIONS, ASSESSED VALUATIONS, and FINAL EQUALIZED VALUE.

Cass County, Minnesota, for Taxes for the Year 1961.

Table with columns: SOLD FOR TAXES, VALUATIONS BY SCHOOL DISTRICTS AS EQUALIZED BY DEPARTMENT OF TAXATION, Tax Including State Homestead, SPECIAL TAXES, TOTAL TAXES, PAID, WHEN PAID, Number of Receipt, March Settlement, June Settlement, November Settlement, Collections to First Monday in January 1963, Delinquent on First Monday in January 1963, Total Delinquent Tax and Penalty, and REMARKS.

137-34 Sylvan's Beach
138-35 Sylvan's Beach
139-36 Sylvan's Beach
140-37 Sylvan's Beach
141-38 Sylvan's Beach
142-39 Sylvan's Beach
143-40 Sylvan's Beach
144-41 Sylvan's Beach
145-42 Sylvan's Beach
146-43 Sylvan's Beach
147-44 Sylvan's Beach
148-45 Sylvan's Beach
149-46 Sylvan's Beach
150-47 Sylvan's Beach
151-48 Sylvan's Beach
152-49 Sylvan's Beach
153-50 Sylvan's Beach
154-51 Sylvan's Beach
155-52 Sylvan's Beach
156-53 Sylvan's Beach
157-54 Sylvan's Beach
158-55 Sylvan's Beach
159-56 Sylvan's Beach
160-57 Sylvan's Beach
161-58 Sylvan's Beach
162-59 Sylvan's Beach
163-60 Sylvan's Beach
164-61 Sylvan's Beach
165-62 Sylvan's Beach
166-63 Sylvan's Beach
167-64 Sylvan's Beach
168-65 Sylvan's Beach
169-66 Sylvan's Beach
170-67 Sylvan's Beach
171-68 Sylvan's Beach
172-69 Sylvan's Beach
173-70 Sylvan's Beach
174-71 Sylvan's Beach
175-72 Sylvan's Beach
176-73 Sylvan's Beach
177-74 Sylvan's Beach
178-75 Sylvan's Beach
179-76 Sylvan's Beach
180-77 Sylvan's Beach
181-78 Sylvan's Beach
182-79 Sylvan's Beach
183-80 Sylvan's Beach
184-81 Sylvan's Beach
185-82 Sylvan's Beach
186-83 Sylvan's Beach
187-84 Sylvan's Beach
188-85 Sylvan's Beach
189-86 Sylvan's Beach
190-87 Sylvan's Beach
191-88 Sylvan's Beach
192-89 Sylvan's Beach
193-90 Sylvan's Beach
194-91 Sylvan's Beach
195-92 Sylvan's Beach
196-93 Sylvan's Beach
197-94 Sylvan's Beach
198-95 Sylvan's Beach
199-96 Sylvan's Beach
200-97 Sylvan's Beach

