

ASSESSMENT & TAX LIST - 1957

Sylvan













Assessment of

Form 314

COLLECTIONS OF TAXES OF 1958

Town of Sylvan

CASS COUNTY, MINNESOTA

NAME OF OWNER	FUNDS			Amount Collected from Nov. 1957 to First Monday in Jan. 1958	REDUCTIONS	Total Reductions and Collected	BALANCE UNCOLLECTED	ADDITIONS	Total Uncollected to First Monday in January, 1958
	MARCH SETTLEMENT 1958	JUNE SETTLEMENT 1958	NOV. SETTLEMENT 1958						
State—Non-Homestead, State—Homestead,	50 87 48 69	465 05 449 85	328 97 338 20	251 517					
County Revenue, County Road and Bridge, County Welfare, County Bond and Interest, Welfare Deficit R. + B. Sub Proj. PERA	247 76 121 53 382 02 35 08 22 77 40 52 23 74	2366 44 1160 68 3648 41 335 05 217 43 386 89 226 72	1720 87 844 11 2653 33 243 67 158 13 281 37 164 88	26 35 12 92 40 63 373 243 4 30 2 53					
Town Revenue, Town Road and Bridge, Town Drag, Town State Loan, Co. Nurse R. + B. Bldg. Cass Co. Agri.	11 10 137 74 8 11 16 21 16 20 4 06	106 00 1315 44 77 10 154 75 154 75 38 69	77 10 956 66 56 27 112 55 112 55 28 14	118 14 65 86 172 173 44					
School Local 1 Mill, School Special, School State Loan, Deficiency, Tuition, Transportation B. + Int C. O. #1 Debt PERA	8 11 296 24 451 45 8 27 458 50 40 95 19 31 4 30	77 38 3371 44 4311 55 78 93 4379 64 390 80 530 01 46 01	56 28 2570 47 3135 63 57 40 3184 81 284 44 353 46 29 83	87 25 46 48 01 87 48 77 4 36 6 35 46					
	2453 53	24284 28	17749 12	256 30					

MONTH	SCHOOL DISTRICT NO.	TAXES										TOTALS
		LOCAL 1 MILL	SPECIAL	STATE LOAN	B. + Int.	Deficiency	Transp.	C. O.	#1 Debt	PERA		
MARCH SETTLEMENT	School District No. 116 A2	52	1282		2903	2858	52	260				
	#2 11671A	126	6274		7124	7014	129	636	559	27	7993	
	#1 116 A	384	9603		21738	21404	332	1940	1372	67	22762	
	#1 11671A	249	12445		14085	13869	254	1259		204	55465	
Totals		811	29624		45850	45145	827	4095	1931	430	128713	
JUNE SETTLEMENT	School District No. #2 116A	3271	163528		185115	182236	3336	16516	35616	1733	591351	
	#1 11671A	2477	123866		140216	138036	2527	12510		1313	420945	
	#1 116 A	394	9841		22280	21934	401	1992		209	57051	
	#2 116A	1596	39909		90353	88949	1629	8062	17385	846	248729	
Totals		7738	337144		437964	431155	7893	39080	53001	4101	7318076	
NOVEMBER SETTLEMENT	School District No. #1 116 A	182	4545		10290	10130	185	918		96	26546	
	#2 11671A	2200	110002		124522	122586	2244	11110		1166	373830	
	#1 116 A	792	19782		44777	44089	808	3997		419	123282	
	#1 11671A	2454	122718		138892	136758	2503	12419	8618	1302	443774	
Totals		5628	257047		319481	313563	5740	28444	35346	2983	967232	
NOVEMBER to JANUARY	School District No. #2 116 A	43	1064		2409	2372	43	215	463	23	6632	
	#1 11671A	16	785		889	875	16	79	172	08	2840	
	#1 116 A	28	697		1579	1554	28	142		15	4043	
Totals		87	2546		4877	4801	87	436	635	46	13515	
ADDITIONS	School District No.											
Totals												
REDUCTIONS	School District No.											
Totals												

Sylvan Beach Land & Acreage Village of Sylvan North Sylvan Lyons's Sylvan  
 Add'l to Sylvan  
 Real Estate 133-29 133-30











Assessment Roll and Tax List of Real Property in the Town of Sylvan

Cass County, Minnesota, for Taxes for the Year 1957.

Indicate Type of Property: R-Residential, C-Commercial, I-Industrial, U-Utility, F-Farm, L-Lakeshore, T-Timber, M-Mineral

# 2 # 2

132-29

133-29

Table with columns: IN WHOSE NAME ASSESSED, TO WHOM TRANSFERRED, DESCRIPTION OF PROPERTY, TRUE AND FULL VALUATIONS, ASSESSED VALUATIONS, VALUATIONS BY SCHOOL DISTRICTS AS EQUALIZED BY DEPARTMENT OF TAXATION, SOLD FOR TAXES, PAID, WHEN PAID, Number of Receipt, March Settlement 1958, June Settlement 1958, November Settlement 1958, Collectible to First Monday in January 1959, Delinquent on First Monday in January 1959, Total Delinquent Tax and Penalty, REMARKS.

Sylvan Beach Add'n to Sylvan 133-30 Land & Allen's Village of Sylvan North Sylvan Arlo's Sylvan Park







Assessment Roll and Tax List of Real Property in the Town of Sylvan

Cass County, Minnesota, for Taxes for the Year 1957.

Indicate Type of Property: R-Residential, C-Commercial, I-Industrial, U-Utility, F-Farm, L-Lakeshore, T-Timber, M-Mineral

Table with columns: IN WHOSE NAME ASSESSED, TO WHOM TRANSFERRED, DESCRIPTION OF PROPERTY, TRUE AND FULL VALUATIONS, ASSESSED VALUATIONS, VALUATIONS BY SCHOOL DISTRICTS AS EQUALIZED BY DEPARTMENT OF TAXATION, SOLD FOR TAXES, PAID, WHEN PAID, March Settlement 1958, June Settlement 1958, November Settlement 1958, Collections to First Monday in January 1959, Delinquent on First Monday in January 1959, Total Delinquent Tax and Penalty, REMARKS.

133-29

Sylvan Beach Addition to Sylvan Land & Allied Village of Sylvan North Sylvan Lyons, Sylvan Park







Assessment Roll and Tax List of Real Property in the Town of Sylvan of Cass County, Minnesota

Cass County, Minnesota, for Taxes for the Year 1957.

Table with columns: IN WHOSE NAME ASSESSED, TO WHOM TRANSFERRED, SUBDIVISION, TRUE AND FULL VALUATIONS, ASSESSED VALUATIONS (RURAL, ALL OTHER, MACHINERY), TOTAL ASSESSED VALUE, FINAL EQUALIZED VALUE.

Table with columns: VALUATIONS BY SCHOOL DISTRICTS AS EQUALIZED BY DEPARTMENT OF TAXATION, TAXES (SOLD FOR TAXES, District No., Rate, etc.), PAID, WHEN PAID, Number of Receipt, March Settlement, June Settlement, November Settlement, Collections to First Monday in January, Delinquent on First Monday in January, Total Delinquent Tax and Penalty, REMARKS.

Vertical text on the right edge: Land & Alien's Village of Sylvan, North Sylvan, PLYONS SYLVAN PARK



















Assessment Roll and Tax List of Real Property in the Town of Sylvan

Indicate Type of Property: R-Residential, C-Commercial, I-Industrial, U-Utility, F-Farm, L-Lakeshore, T-Timber, M-Mineral

Table with columns: IN WHOSE NAME ASSESSED, TO WHOM TRANSFERRED, DESCRIPTION OF PROPERTY, TRUE AND FULL VALUATIONS, ASSESSED VALUATIONS, and FINAL EQUALIZED VALUE. Includes handwritten entries for Minnesota Power & Light Co., Roy & Eva Thon, J. I. & Ellen J. Marlow, etc.

Cass County, Minnesota, for Taxes for the Year 1957.

Table with columns: #, SOLD FOR TAXES, VALUATION, TAXES, PAID, WHEN PAID, Number of Receipt, March Settlement, June Settlement, November Settlement, Collections to First Monday in January 1959, Delinquent on First Monday in January 1959, Total Delinquent Tax and Penalty, REMARKS. Includes handwritten calculations and dates.

Vertical text on the right edge: Sylvan, Village of Sylvan, North Sylvan, Lyons, Sylvan







Assessment Roll and Tax List of Real Property in the Town of Sylvan of Sylvan County, Minnesota

Cass County, Minnesota, for Taxes for the Year 1957.

Form 300 (1956) U.S. GOVERNMENT PRINTING OFFICE: 1956

Indicate Type of Property: R-Residential, C-Commercial, I-Industrial, U-Utility, F-Farm, L-Lakeshore, T-Timber, M-Mineral

IN WHOSE NAME ASSESSED	TO WHOM TRANSFERRED	DESCRIPTION OF PROPERTY		TRUE AND FULL VALUATIONS											FINAL EQUALIZED VALUE	
				ASSESSED VALUATIONS												
				RURAL			ALL OTHER				MACHINERY					TOTAL ASSESSED VALUE
				Land	Buildings	Machinery	Total	Homestead	Over \$1,000	Timber	Homestead	Over \$1,000	Machinery	Total	Total Assessed Value	
				Dollars	Dollars	Dollars	Dollars	Dollars	Dollars	Dollars	Dollars	Dollars	Dollars	Dollars	Dollars	Dollars

SOLD FOR TAXES	VALUATIONS BY SCHOOL DISTRICTS AS EQUALIZED BY DEPARTMENT OF TAXATION						Tax Including State Homestead	State Tax on Non-Homestead	SPECIAL TAXES	TOTAL TAXES	PAID	WHEN PAID	Number of Receipts	March Settlement 1958	June Settlement 1958	November Settlement 1958	Penalty	Collections to First Monday in January 1959	Penalty	Delinquent on First Monday in January 1959	Total Delinquent Tax and Penalty	REMARKS	
	District No.	District No.	District No.	District No.	District No.	District No.																	
	Rate	Rate	Rate	Rate	Rate	Rate																	
	Dollars	Dollars	Dollars	Dollars	Dollars	Dollars	\$ cts.	\$ cts.	\$ cts.	\$ cts.	\$ cts.	\$ cts.	\$ cts.	\$ cts.	\$ cts.	\$ cts.	\$ cts.	\$ cts.	\$ cts.	\$ cts.	\$ cts.	\$ cts.	\$ cts.

*Manilla Land Co.*

*Albert S. Ward Corporation*

*Minnesota Power & Light Co.*

*Harold + Esther Larson*

*Albert S. Ward Corporation*

*Manilla Land Co.*

*Harold + Esther Larson*

*Minnesota Power & Light Co.*

*Manilla Land Co.*

*Carpenter Range Power Co.*

*State of Minnesota*

Sylvan Land & Alien's Village of Sylvan North Sylvan Plympton Sylvan

133-29

133-30







Prof Begm Deed #1  
" #2

EAST

DEED 142

1128.24'

#7 Price

#9  
SUITON

N 62° 37' E  
143.36'

N 65° 14' W 192'  
N 65° 14' W 226.8'

N 57° 51' E 690'

S 75° 30' W

705'

Judd

#6  
Hidapple #5

Blackford #4

Roberts #7

Deed #1  
Deed #2

N 79° 51' E

515.5'

99.6'

By Viking

#1  
N 60° 33' E  
445.5'

Molin #27591-A

N 55° 24' W

560'

662'

#3 Drummond

S 67° 37' W  
995'

#2 Johnson

Deed #1

Deed #2

77.6' 556'

156'

392'

1188'

396'

442'

NORTH  
670'



Scale 1" = 200'

Lot 1-28-133-29



















Assessment Roll and Tax List of Real Property in the Town of Sylvan of Sylvania Indicate Type of Property: R-Residential, C-Commercial, I-Industrial, U-Utility, F-Farm, L-Lakeshore, T-Timber, M-Mineral

Cass County, Minnesota, for Taxes for the Year 1957.

Table with columns: IN WHOSE NAME ASSESSED, TO WHOM TRANSFERRED, DESCRIPTION OF PROPERTY, TRUE AND FULL VALUATIONS, ASSESSED VALUATIONS, VALUATIONS BY SCHOOL DISTRICTS AS EQUALIZED BY DEPARTMENT OF TAXATION, SOLD FOR TAXES, SPECIAL TAXES, TOTAL TAXES, PAID, WHEN PAID, Number of Receipt, March Settlement 1958, June Settlement 1958, November Settlement 1958, Collections to First Monday in January 1959, Delinquent on First Monday in January 1959, Total Delinquent Tax and Penalty, REMARKS.

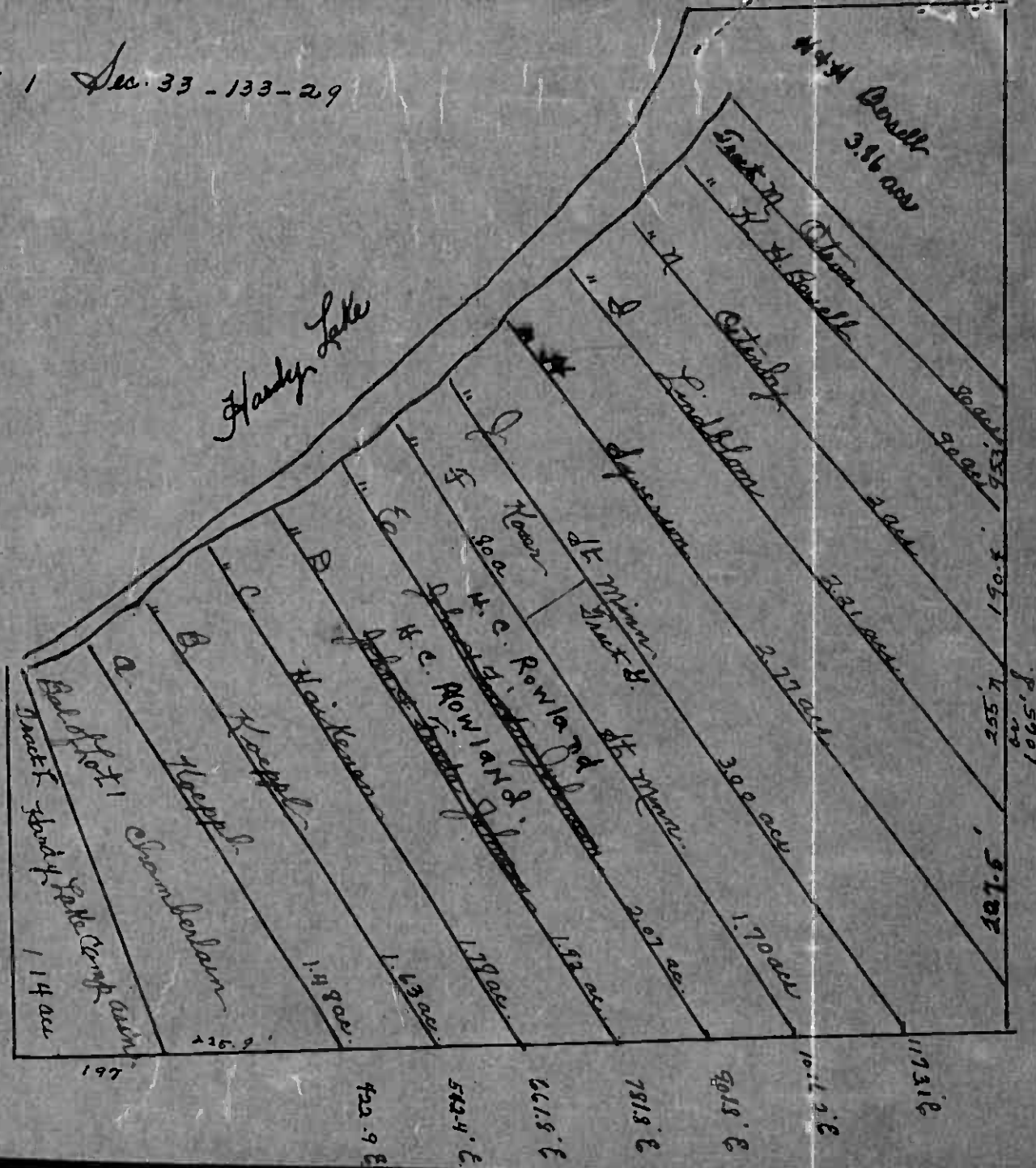
(Continued on next page)

133-29, 133-30, Land & Alien's Village of Sylvan, North Sylvan, Arlvo's Sylvan Park



1957  
Sylvan

Lot 1 Sec. 33 - 133-29





Assessment Roll and Tax List of Real Property in the Town of Lylova

Cass County, Minnesota, for Taxes for the Year 1957.

Form 300 (1957) U.S. GOVERNMENT PRINTING OFFICE

Indicate Type of Property: R-Residential, C-Commercial, I-Industrial, U-Utility, F-Farm, L-Lakeshore, T-Timber, M-Mineral

Main table with columns: IN WHOSE NAME ASSESSED, TO WHOM TRANSFERRED, DESCRIPTION OF PROPERTY, TRUE AND FULL VALUATIONS, ASSESSED VALUATIONS, VALUATIONS BY SCHOOL DISTRICTS AS EQUALIZED BY DEPARTMENT OF TAXATION, TAXES, PAID, WHEN PAID, Number of Receipt, March Settlement 1958, June Settlement 1958, Penalty, November Settlement 1958, Penalty, Collections to First Monday in January 1959, Delinquent on First Monday in January 1959, Total Delinquent Tax and Penalty, REMARKS.

(Continued on next page)

11 93

4724  
424  
496

15260 278

15538

15538

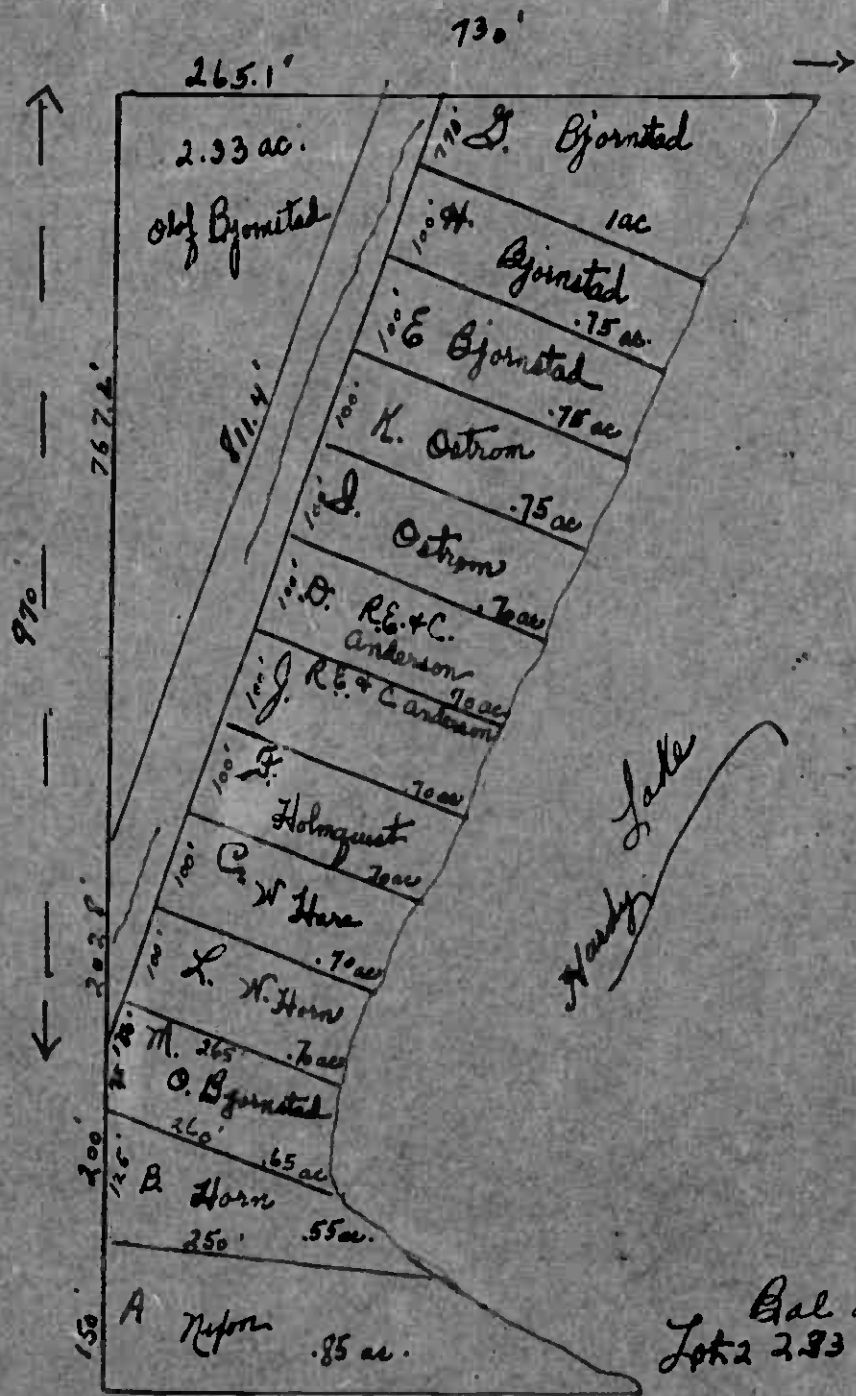
133-29

133-30

Sylvan Beach Add'n to Sylvan Park Village of Sylvan Park Lylova's Sylvan Park



Sydney  
1957



SCALE 1" = 200'  
GOVT LOT 2, Sec 33-133-27

This map drawn from  
Reg. of Deeds records  
3-9-53

- A. Nelson
- B. Horn
- C. L. Horn
- D. R.E. & C. Anderson
- E. Bjornstad
- F. Holmquist
- G. Bjornstad
- H. Bjornstad
- I. L. & A. Ostrom
- J. R.E. & C. Anderson
- K. H. Ostrom
- L. L. W. Horn
- M. Bjornstad
- N. Bjornstad

Bal of  
Lot 2 2.33 ac.

11.88 ac  
3.02 ac road























































Assessment Roll and Tax List of Real Property in the Town of Sylvan

Indicate Type of Property: R-Residential, C-Commercial, I-Industrial, U-Utility, F-Farm, L-Lakeshore, T-Timber, M-Mineral

Table with columns: IN WHOSE NAME ASSESSED, TO WHOM TRANSFERRED, DESCRIPTION OF PROPERTY, TRUE AND FULL VALUATIONS, ASSESSED VALUATIONS, and FINAL EQUALIZED VALUE.

Handwritten entries for property owners: N.W. Paper Co., Elmer & Mae Gustafson, Ralph A. & Cora Agnes Cole, State of Minnesota, Allen Rogers, Edwin G. Hublin.

Cass County, Minnesota, for Taxes for the Year 1957.

Table with columns: VALUATIONS BY SCHOOL DISTRICTS AS EQUALIZED BY DEPARTMENT OF TAXATION, TAXES, PAID, WHEN PAID, Number of Receipt, March Settlement, June Settlement, Penalty, Collections to First Monday in January 1959, Delinquent on First Monday in January 1959, Total Delinquent Tax and Penalty, REMARKS.

Handwritten entries for tax payments and remarks: 1 PAID IN FULL MAY 3 1 1958, 2 PAID IN FULL MAY 3 1 1958, 3 PAID IN FULL MAY 3 1 1958, 4 PAID IN FULL MAY 3 1 1958, 6 2nd HALF PAID OCT 1 1958, 7 2nd HALF PAID OCT 1 1958, 9 2nd HALF PAID OCT 1 1958, 13 2nd Half Paid OCT 3 1 1958, 14 2nd HALF PAID OCT 1 1958, 17 2nd HALF PAID OCT 1 1958, 18 2nd HALF PAID OCT 1 1958, 19 PAID IN FULL FEB 28 1958.

Vertical text on the right edge: Beach Add'n to Sylvan, Land & Alien's Village of Sylvan, North SYLVAN, NLYONS SYLVAN PARK















Assessment Roll and Tax List of Real Property in the Town of Sylvan

Cass County, Minnesota, for Taxes for the Year 1957.

Table with columns: IN WHOSE NAME ASSESSED, TO WHOM TRANSFERRED, SUBDIVISION, TRUE AND FULL VALUATIONS, ASSESSED VALUATIONS, VALUATIONS BY SCHOOL DISTRICTS AS EQUALIZED BY DEPARTMENT OF TAXATION, TAXES, PAID, WHEN PAID, etc.

Land & Alien's Village of Sylvan North Sylvan Arlyon's Sylvan Park







Assessment Roll and Tax List of Real Property in the Town of Sylvan

Indicate Type of Property: R-Residential, C-Commercial, I-Industrial, U-Utility, F-Farm, L-Lakeshore, T-Timber, M-Mineral

Cass County, Minnesota, for Taxes for the Year 1957.

Table with columns: IN WHOSE NAME ASSESSED, TO WHOM TRANSFERRED, DESCRIPTION OF PROPERTY, TRUE AND FULL VALUATIONS, ASSESSED VALUATIONS, VALUATIONS BY SCHOOL DISTRICTS AS EQUALIZED BY DEPARTMENT OF TAXATION, SOLD FOR TAXES, TAXES, PAID, WHEN PAID, etc.

359 41

Handwritten summary calculations: 491, 4252 = 743, 379 = 379, 631 = 1122, 14408, 20098, 34506, 252, 34758

245 83, 101 75

Van Beach Add'n to Sylvan Land & Allen's Village of Sylvan North Sylvan Lyons's Sylvan







Assessment Roll and Tax List of Real Property in the Town of Sylvan

Indicate Type of Property: R-Residential, C-Commercial, I-Industrial, U-Utility, F-Farm, L-Lakeshore, T-Timber, M-Mineral

Form 511 (1957) MINN. STATE PROPERTY, MINNEAPOLIS

Cass County, Minnesota, for Taxes for the Year 1957.

Table with columns: IN WHOSE NAME ASSESSED, TO WHOM TRANSFERRED, DESCRIPTION OF PROPERTY, TRUE AND FULL VALUATIONS, ASSESSED VALUATIONS, VALUATIONS BY SCHOOL DISTRICTS AS EQUALIZED BY DEPARTMENT OF TAXATION, SOLD FOR TAXES, TAXES, PAID, WHEN PAID, Number of Receipt, March Settlement 1958, June Settlement 1958, November Settlement 1958, Collections to First Monday in January 1959, Delinquent on First Monday in January 1959, Total Delinquent Tax and Penalty, REMARKS.

Van Beach Add'n to Sylvan Land & Alien's Village of Sylvan North Sylvan Lyons Park Sylvan



Assessment Roll and Tax List of Real Property in the Town of Sylvan

\* Indicate Type of Property: R-Residential, C-Commercial, I-Industrial, U-Utility, F-Farm, L-Lakeshore, T-Timber, M-Mineral

Table with columns: IN WHOSE NAME ASSESSED, TO WHOM TRANSFERRED, SUBDIVISION, TRUE AND FULL VALUATIONS, ASSESSED VALUATIONS, FINAL EQUALIZED VALUE.

Cass County, Minnesota, for Taxes for the Year 1957.

Table with columns: SOLD FOR TAXES, VALUATIONS BY SCHOOL DISTRICTS AS EQUALIZED BY DEPARTMENT OF TAXATION, SPECIAL TAXES, TOTAL TAXES, PAID, WHEN PAID, Number of Receipts, March Settlement, June Settlement, Penalty, November Settlement, Penalty, Collections to First Monday in January 1959, Delinquent on First Monday in January 1959, Total Delinquent Tax and Penalty, REMARKS.

Beach Land & Allen's Village of Sylvan North Sylvan Plympton's Sylvan Park



Assessment Roll and Tax List of Real Property in the Town of Sylvan of Sylvania

Indicate Type of Property: R-Residential, C-Commercial, I-Industrial, U-Utility, F-Farm, L-Lakeshore, T-Timber, M-Mineral

Table with columns: IN WHOSE NAME ASSESSED, TO WHOM TRANSFERRED, DESCRIPTION OF PROPERTY, TRUE AND FULL VALUATIONS, ASSESSED VALUATIONS, and FINAL EQUALIZED VALUE. Includes handwritten entries for St. Olaf College and Minnesota Power & Light Co.

62607

Cass County, Minnesota, for Taxes for the Year 1957.

Table with columns: SOLD FOR TAXES, VALUATIONS BY SCHOOL DISTRICTS AS EQUALIZED BY DEPARTMENT OF TAXATION, SPECIAL TAXES, TOTAL TAXES, PAID, WHEN PAID, and various settlement/penalty columns. Includes handwritten district numbers #2 and #1.

Land & Allen's Village of Sylvan North Sylvan Arlyon's Sylvan Park



















































Assessment Roll and Tax List of Real Property in the Town of Sylvan

Cass County, Minnesota, for Taxes for the Year 1957.

Table with columns: IN WHOSE NAME ASSESSED, TO WHOM TRANSFERRED, DESCRIPTION OF PROPERTY, TRUE AND FULL VALUATIONS, ASSESSED VALUATIONS, VALUATIONS BY SCHOOL DISTRICTS AS EQUALIZED BY DEPARTMENT OF TAXATION, SOLD FOR TAXES, SPECIAL TAXES, TOTAL TAXES, PAID, WHEN PAID, Number of Receipt, March Settlement 1958, June Settlement 1958, November Settlement 1958, Collections to First Monday in January 1959, Delinquent on First Monday in January 1959, Total Delinquent Tax and Penalty, REMARKS.

132-29 (Cal) 133-30 Village of Sylvan prth Sylvan Carl's Sylvan

Beach Add'n to Sylvan Beach Sylvan Shady Shores Land & Allen's 2nd Addition to Sylvan











































Assessment Roll and Tax List of Real Property in the Town of Sylvan

Cass County, Minnesota, for Taxes for the Year 1957.

Form 30-150 (1-57) Indicate Type of Property: R-Residential, C-Commercial, I-Industrial, U-Utility, F-Farm, L-Lakeshore, T-Timber, M-Minerals

Table with columns: IN WHOSE NAME ASSESSED, TO WHOM TRANSFERRED, DESCRIPTION OF PROPERTY, TRUE AND FULL VALUATIONS, ASSESSED VALUATIONS, VALUATIONS BY SCHOOL DISTRICTS AS EQUALIZED BY DEPARTMENT OF TAXATION, SOLD FOR TAXES, PAID, WHEN PAID, etc.

John A. McWhirter
F.D. + Florence Schmitt
Elmer E. Erickson

Sylvan Shady Shore
15.2
16
17
18
19
20

Balance Paid OCT 31 1956
Balance Paid OCT 31 1956
Balance Paid OCT 31 1956
PAID IN FULL MAY 31 1956

672 14 686 378 102 296

132-29 Sylvan Beach
133-29 Land & Allen's 4th Addition to Sylvan B.
133-30 Sylvan Shady Shore

Allen's 3rd
Allen's 2nd
Addition to Sylvan B.











Assessment Roll and Tax List of Real Property in the Town of Sylvan

Indicate Type of Property: R-Residential, C-Commercial, I-Industrial, U-Utility, F-Farm, L-Lakeshore, T-Timber, M-Mineral

Cass County, Minnesota, for Taxes for the Year 1957.

Table with columns: IN WHOSE NAME ASSESSED, TO WHOM TRANSFERRED, SUBDIVISION, Sec. of Lot, Town or Block, Reg., Number of Acres of Land, No. School District, Ind. Homestead Tr. or No., Ind. Adm. Appl. Tax or No., Ind. City Type of Property, TRUE AND FULL VALUATIONS (LAND, BUILDINGS, MACHINERY, TOTAL), ASSESSED VALUATIONS (RURAL, ALL OTHER, MACHINERY, TOTAL ASSESSED VALUE), Total Assessed Value as Equalized by the Board of Review, FINAL EQUALIZED VALUE.

Table with columns: SOLD FOR TAXES, VALUATIONS BY SCHOOL DISTRICTS AS EQUALIZED BY DEPARTMENT OF TAXATION (District No., Rate, etc.), Tax including State Homestead, State Tax on Non-Homestead, SPECIAL TAXES, TOTAL TAXES, PAID, WHEN PAID, Number of Receipt, March Settlement 1958, June Settlement 1958, Penalty, November Settlement 1958, Penalty, Collections to First Monday in January 1959, Delinquent on First Monday in January 1959, Total Delinquent Tax and Penalty, REMARKS.

132-29, 133-30, Sylvan Beach, Sylvan Shady Shore, Sylvan's Sylvan, Land & Allen's 2nd Add'n to Sylvan B.

132-29, 133-30, Sylvan Beach, Sylvan Shady Shore, Sylvan's Sylvan, Land & Allen's 2nd Add'n to Sylvan B.







Assessment Roll and Tax List of Real Property in the Town of Sylvan

Cass County, Minnesota, for Taxes for the Year 1957.

Indicate Type of Property: R-Residential, C-Commercial, I-Industrial, U-Utility, F-Farm, L-Lakeshore, T-Timber, M-Mineral

Table with columns: IN WHOSE NAME ASSESSED, TO WHOM TRANSFERRED, DESCRIPTION OF PROPERTY, TRUE AND FULL VALUATIONS, ASSESSED VALUATIONS, and FINAL EQUALIZED VALUE.

Table with columns: VALUATIONS BY SCHOOL DISTRICTS AS EQUALIZED BY DEPARTMENT OF TAXATION, TAXES, PAID, WHEN PAID, Number of Receipt, March Settlement, June Settlement, November Settlement, Collections to First Monday in January, Delinquent on First Monday in January, Total Delinquent Tax and Penalty, and REMARKS.

Vertical text on the left margin: 133-29, 133-30, Sylvan Shady Shore, Add'n to Sylvan B., Land & Allen's 3rd Add'n to Sylvan B.

Vertical text on the right margin: Personal