

ASSESSMENT & TAX LIST - 1956

Sylvan

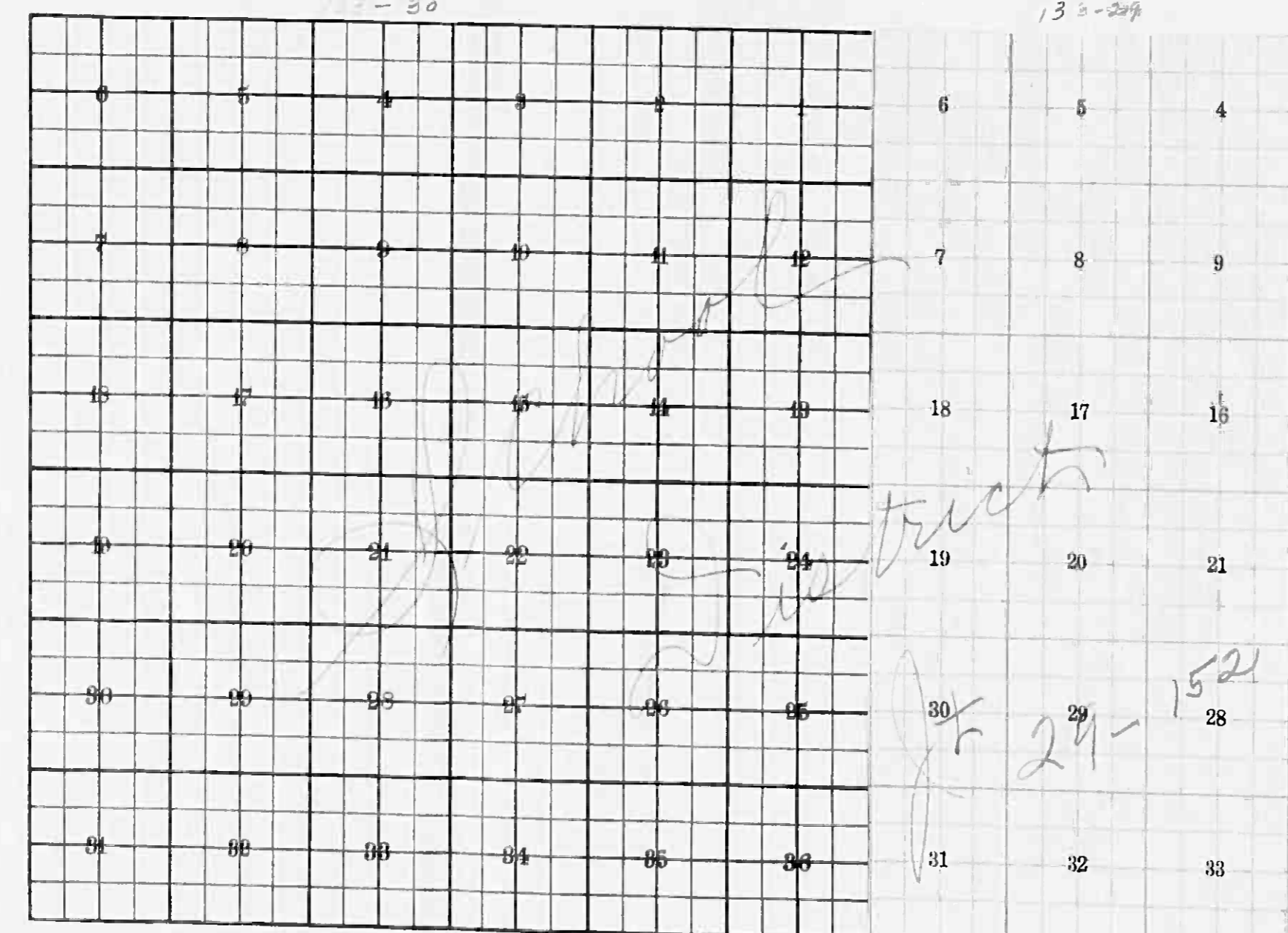
INDEX TO SECTIONS

SECTION PAGE

Sec. 1	
" 2	
" 3	
" 4	
" 5	
" 6	
" 7	
" 8	
" 9	
" 10	
" 11	
" 12	
" 13	
" 14	
" 15	
" 16	
" 17	
" 18	
" 19	
" 20	
" 21	
" 22	
" 23	
" 24	
" 25	
" 26	
" 27	
" 28	
" 29	
" 30	
" 31	
" 32	
" 33	
" 34	
" 35	
" 36	

For Convenience of Auditor in Showing Boundaries of School Districts

132-29
Township No. 133-29 Range No. Mer. P. M.
133-30



Returns Showing Grain Received in or Handled by Elevators, Warehouses and Mills in the of in the County of for the Year Ending May 1, 1956.

NAMES OF OWNERS	ADDRESS	Bushels of Wheat	Bushels of Soy Beans	Bushels of Flax	Total No. of Bushels of Wheat, Soy Beans and Flax	★ Tax of 1/2 Mill per Bushel		Bushels of Corn	Bushels of Barley	Bushels of Rye	Bushels of Oats	Bushels of Buckwheat	Bushels of all Other Grains	Total No. Bushels of Corn, Barley, Rye, Oats, Buckwheat and all Other Grains	★ Tax of 1/2 Mill Per Bushel		★ Total Tax		REMARKS	
						Dollars	Cts.								Dollars	Cts.	Dollars	Cts.		

Note ★ Assessors will not fill these columns

133-29
133-30
VILLAGE OF SYLVAN
NORTH SYLVAN CANYON

Assessor's Return of Exempt Real Property in the _____ of _____ County of _____, Minnesota, for the Year 1956

NAMES OF OWNERS	DESCRIPTION				No. of Acres	FOR WHAT PURPOSE USED	TRUE AND FULL VALUATIONS			ASSESSED VALUATIONS		REMARKS	
	SUBDIVISION	Sec. or Lot	Town or Block	Range			LAND Exclusive of Structures and Improvements Dollars	BUILDINGS and Other Structures Dollars	MACHINERY Permanently Attached to Real Estate Dollars	TOTAL True and Full Value Dollars	Rural Including Machinery		All Other
											33 1/3%		40%
Mill River Cemetery Assn.	202' x 226' of SW 1/4 of NW 1/4	17	133	29		15			15	5	8		
Hardy Lake Camp Assn Inc.	Sit 6 less 278' x 388' x 266.7' x 466.7' & N 1/4	33	133	29		486	1725		2211	127	7		
Town of Sylvan, May, Fairview & Village of Palisade	Part of lot 2		5	133	30	60			60	20	4		
Town of Sylvan	Village of Sylvan - lots 6 to 14					40	50		90	30	4		
Town of Sylvan	Carlton's Sylvan Park					270			270	90	4		
										2646	882		

133-29
 133-30
 NORTH SYLVAN
 CARLTON'S SYLVAN

FORM 2 WALKER & COMPANY, ST. PAUL, MINN.

NAMES OF OWNERS	DESCRIPTION	Sec. or Lot	Town or Block	Range	No. of Acres		FOR WHAT PURPOSE USED	TRUE AND FULL VALUATIONS				ASSESSED VALUATIONS		REMARKS	
					Acres	100ths		LAND Exclusive of Structures and Improvements Dollars	BUILDINGS and Other Structures Dollars	MACHINERY Permanently Attached to Real Estate Dollars	TOTAL True and Full Value Dollars	Rural Including Machinery 33 1/3% Dollars	All Other 40% Dollars		

SUMMARY OF TAX COLLECTION

Original Levy	-	-	-	-	-	\$	34,416.96
Additions	-	-	-	-	-	\$	29.78
						\$	34,446.74
Abatements	-	-	-	-	-	\$	222.20
						\$	34,224.54 <i>(17.88 - ref.)</i>

COLLECTIONS

March Settlement	-	-	-	-	-	\$	1949.28
June Settlement	-	-	-	-	-	\$	1748.92
November Settlement	-	-	-	-	-	\$	1326.36
January Settlement	-	-	-	-	-	\$	113.84
						\$	33067.40
Over Collected	-	-	-	-	-	\$	
Under Collected	-	-	-	-	-	\$	
Delinquent	-	-	-	-	-	\$	1174.22
						\$	1174.22
Total	-	-	-	-	-	\$	34272.42

133-29 133-29 133-30
 NORTH SYLVAN CARLYON'S SY

Assessor's Return o

FORM 2

NAMES OF OWNERS

1. P.P. + all not listed in #2.
 2. Sec. 4-5-6-7-8-9-16-17-18 + 1/2 of NW Sec. 19
 7th Sec. 20, 7th Sec. 21 + all platted (Orig 133-30)

TABULAR SCHEDULE OF VALUATIONS,

LEVIED IN THE Town OF Sylvan

VALUATION BY SCHOOL DISTRICTS					RATE OF STATE TAXES		RATE OF COUNTY TAXES										RATE OF TOWN TAXES										RATE OF		
School District No.	Agric-cultural Lands	Non-Agric-cultural Lands	Personal Property	Total Value of all Property except Money and Credits	Total Rate of State Tax	Rev.	R. & B.	Well-fare	Bonds and Int.	R.R. & C. Co.	Bldg. Equip.	Agen.	Total Rate of County Tax	Rev.	R. & B.	Drag Tax	State Loan	Local	Special	State	Deficiency	Tuition	Transportation	Other					
1. 24-152	5569	46,751	722	22,844	60,595	H. 3.81	27.08	14.18					106.42	1.37	13.62	1.													
2. 27-152	27,090	59,279		86,369	86,369																								
	32,659	106,030	8275	146,964		N. H. 5.34																							
Assessed Value	Rural All Other		Personal Property	Total																									
Homestead	18,728			18,728																									
Non-Homestead	119,961		8275	128,236																									
Total	138,689		8275	146,964																									

RATES AND TAXES

COUNTY OF CASS, STATE OF MINNESOTA

SCHOOL TAXES					LOCAL 1 MILL AND SPECIAL SCHOOL TAXES BY DISTRICTS										TAXES LEVIED		
Total Rate of Sch'l Tax	Total Rate of all Taxes	Local 1 Mill	Special	State Loan	Local	Special	State	Deficiency	Tuition	Transportation	Other	Total School Taxes	FUNDS	Rate	Amounts		
83.66	249.88	1156	28900	58748	844	7063						96711	State - Non-Homestead		68500		
108.66	234.88	4904	245175	249196	3580	29960						532815	State - Homestead		55993		
85.73	211.95	2709	67725	137671	1977	16552						232242	County Revenue,		397988		
110.73	236.95	5928	296395	301256	4327	36219						656396	County Road and Bridge,		208405		
		14697	638195	746871	10728	89794						1518164	County Welfare,		701028		
													Bonds and Interest		113760		
													R. & B. Bldg.		29397		
													Cas. Co. Equip. Agin		7348		
													Wellfare Ref.		106118		
													Town Revenue		20134		
													Town Road and Bridge,		200165		
													Town Drag,		14696		
													Town State Loan,		234995		
													School Local 1 Mill,		14697		
													School Special,		638195		
													School State Loan,		746871		
													Deficiency				
													Tuition				
													Transportation		10728		
													Capital Outlay		89794		
													Old #1 Debt		17879		
															15,18164		

Total Taxes Real Estate 32,578.98
 Pers. Prop. 1837.98
 Total 34,416.96

Total Levy, \$34,416.96

I, L. C. Peterson
 Auditor of said County and State aforesaid, do hereby certify that the foregoing is a true and correct Schedule, showing the valuation of all the taxable property, in the Town of Sylvan, in said County, the several rates of Taxation and Totals of the several Tax Funds levied thereon for the year A. D. 1956.
 Witness my hand and official seal, this 15th day of January, A. D. 1957.

L. C. Peterson, County Auditor.
 By Helen Biller, Deputy.

SEAL

Assessor's Return

COLLECTIONS OF TAXES OF 1956 *Summ* OF *Sylvan* CASS COUNTY, MINNESOTA

FUNDS	MARCH SETTLEMENT	JUNE SETTLEMENT	NOV. SETTLEMENT	Amount Collected from Nov. 1955 to First Monday in Jan. 1956	REDUCTIONS	Total Reductions and Collected	BALANCE UNCOLLECTED	ADDITIONS	Total Uncollected to First Monday in January, 1956
	1956	1956	1956						
State—Non-Homestead	4336	34209	16505	138					
State—Homestead	3312	28818	21505	190					
County Revenue	23550	204829	152851	1348					
County Road and Bridge	12331	101205	80038	706					
County Welfare	41482	360795	269239	2375					
County Bond and Interest	6731	58544	43688	376					
<i>A. & B. Bldg.</i>	1739	15127	11288	160					
<i>Well. Bd.</i>	6277	54612	40752	359					
<i>Cash Co. Equip.</i>	434	3782	2823	25					
Town Revenue	1190	10362	7132	68					
Town Road and Bridge	11885	103021	76877	678					
Town Drag	869	7563	5645	50					
Town State Loan									
School Local 1 Mill	869	7565	5643	49					
School Special	29439	332106	259220	1981					
School State Loan									
Deficiency	44192	384393	286750	2530					
Tuition									
Transportation	634	5522	4122	36					
C.O.	5313	46214	34489	304					
<i>Il. Debt</i>	394	10180	6369	61					
	194928	1774992	1325636	11384					

	LOCAL 1-MILL	SPECIAL	Deficiency Transp.	C.O.	Il. Debt	TOTALS
MARCH SETTLEMENT	73	1826	3713	53	446	6261
School District No. (2) A-29-152	112	5656	5149	82	682	10525
(2) A-29-152	195	13213	24826	357	2987	48967
(1) A-29-152		9744	9904	142	1191	21176
Totals	869	29439	44192	634	5313	90831
JUNE SETTLEMENT	1632	40816	82870	1192	9974	139765
School District No. (2) A-29-152	3285	164234	166227	2388	20067	363712
(2) A-29-152	212	5270	10714	153	1288	17637
(1) A-29-152	2436	121786	123792	1777	14883	264666
Totals	7565	332106	384393	5522	46214	785980
NOVEMBER SETTLEMENT	635	15878	32276	464	3881	54449
School District No. (2) A-29-152	2442	122098	124107	1786	14920	270400
(2) A-29-152	284	7122	14477	209	1742	23834
(1) A-29-152	2282	114122	115494	1666	13946	248010
Totals	5643	259220	286750	4122	34489	596693
NOVEMBER to JANUARY	20	511	1036	15	124	1706
School District No. (2) A-29-152	29	1470	1494	21	186	3255
Totals	49	1981	2530	36	304	61
ADDITIONS						
Totals						
REDUCTIONS						
Totals						

133-29 133-29
 133-30
 VILLAGE OF SYLVAN
 NORTH SYLVAN
 CARLTON'S SYLVAN

Assessment Roll and Tax List of Real Property in the Town of Sylvan, Cass County, Minnesota, for Taxes for the Year 1956.

Cass County, Minnesota, for Taxes for the Year 1956.

Form 3C (56) BULLEN-BATES COMPANY, MINNEAPOLIS

Indicate Type of Property: R-Residential, C-Commercial, I-Industrial, U-Utility, F-Farm, L-Lakeshore, T-Timber, M-Mineral

Table with columns: IN WHOSE NAME ASSESSED, TO WHOM TRANSFERRED, SUBDIVISION, TRUE AND FULL VALUATIONS, ASSESSED VALUATIONS (RURAL, ALL OTHER), VALUATIONS BY SCHOOL DISTRICTS, TAXES (SOLD FOR TAXES, District No., Rate, etc.), TOTAL TAXES, PAID, WHEN PAID, and REMARKS.

Adolph & Ethel Stark

- 1. NE 1/4 of NE 1/4 Lot 1 4 13229 5474
2. NW 1/4 of NE 1/4 Lot 1 5 13229
3. SW 1/4 of NE 1/4
4. SE 1/4 of NE 1/4
5.
6. NE 1/4 of NW 1/4
7. NW 1/4 of NW 1/4
8. SW 1/4 of NW 1/4
9. SE 1/4 of NW 1/4
10.
11. NE 1/4 of SW 1/4
12. NW 1/4 of SW 1/4
13. SW 1/4 of SW 1/4
14. NE 1/4 of SW 1/4
15.
16. NE 1/4 of SE 1/4
17. NW 1/4 of SE 1/4
18. SW 1/4 of SE 1/4
19. SE 1/4 of SE 1/4
20.

375 1000 1395 275

1 SOLD FOR TAXES
2
3
4
5
6
7
8
9
10
11
12
13
14
15
16
17
18
19
20

Tax rates and values: District No. 1, Rate 2.0, 2.5, 3.0, 4.0, 5.0, 6.0. Total Assessed Value 275.

TOTAL TAXES \$ 57.72
PAID \$ 57.72
WHEN PAID AUG 6 1957
MAY 31 1957
2886 2886

Assessment Roll and Tax List of Real Property in the Town of Sylvan, Cass County, Minnesota

Cass County, Minnesota, for Taxes for the Year 1956.

Form 50 (56) MINN. STATE BOARD OF TAXATION

Table with columns: IN WHOSE NAME ASSESSED, TO WHOM TRANSFERRED, SUBDIVISION, TRUE AND FULL VALUATIONS, ASSESSED VALUATIONS, FINAL EQUALIZED VALUE. Includes handwritten entries for property owners like 'Arnold Gravelly' and 'Gevern J. Anderson'.

Table with columns: VALUATIONS BY SCHOOL DISTRICTS AS EQUALIZED BY DEPARTMENT OF TAXATION, Tax including State Homestead, SPECIAL TAXES, TOTAL TAXES, PAID, WHEN PAID, Number of Receipt, March Settlement 1957, June Settlement 1957, November Settlement 1957, Collections to First Monday in January 1958, Delinquent on First Monday in January 1958, Total Delinquent Tax and Penalty, REMARKS.

132-29

133-30

ADDITIONAL 1st SYLVAN BLDG VILLAGE OF SYLVAN NORTH SYLVAN CARLYON'S SYLVAN

Assessment Roll and Tax List of Real Property in the Town of Sylvan, Cass County, Minnesota, for Taxes for the Year 1956.

Form 5C (56)

* Indicate Type of Property: R-Residential, C-Commercial, I-Industrial, U-Utility, F-Farm, L-Lakeshore, T-Timber, M-Mineral

Table with columns: IN WHOSE NAME ASSESSED, TO WHOM TRANSFERRED, DESCRIPTION OF PROPERTY, TRUE AND FULL VALUATIONS, ASSESSED VALUATIONS, VALUATIONS BY SCHOOL DISTRICTS AS EQUALIZED BY DEPARTMENT OF TAXATION, TAXES, PAID, WHEN PAID, Number of Receipts, March Settlement 1957, June Settlement 1957, November Settlement 1957, Collections to First Monday in January 1958, Delinquent on First Monday in January 1958, Total Delinquent Tax and Penalty, REMARKS.

133-29

133-30

SYLVAN SHS VILLAGE OF SYLVAN NORTH SYLVAN CARLYON'S SITE

Assessment Roll and Tax List of Real Property in the Town of Lyman of Sydney

Indicate Type of Property: R-Residential, C-Commercial, I-Industrial, U-Utility, F-Farm, L-Lakeshore, T-Timber, M-Mineral

Cass County, Minnesota, for Taxes for the Year 1956.

IN WHOSE NAME ASSESSED	TO WHOM TRANSFERRED	DESCRIPTION OF PROPERTY					TRUE AND FULL VALUATIONS								SOLD FOR TAXES	VALUATIONS BY SCHOOL DISTRICTS AS EQUALIZED BY DEPARTMENT OF TAXATION						SPECIAL TAXES	TOTAL TAXES	PAID	WHEN PAID	Number of Receipts	March Settlement 1957	June Settlement 1957	Penalty	November Settlement 1957	Penalty	Collections to First Monday in January 1958	Penalty	Delinquent on First Monday in January 1958	Total Delinquent Tax and Penalty	REMARKS						
		SUBDIVISION	Sec. of Lot	Town or Block	Reg.	Number of Acres of Land Acres 100ths	INDICATE TYPE OF PROPERTY	LAND Exclusive of Structures and Improvements Dollars	BUILDINGS and Other Structures Dollars	MACHINERY Permanently Attached to Real Estate Dollars	TOTAL True and Full Value Dollars	ASSESSED VALUATIONS				TOTAL ASSESSED VALUE Dollars	Total Assessed Value as Equalized by the Board of Review Dollars	FINAL EQUALIZED VALUE Dollars	District No.	Rate	District No.																Rate	District No.	Rate	District No.	Rate	
												RURAL Homestead Up to \$1,000 20%	RURAL Over \$4,000 and Non-Homestead 33 1/3%	Timber Land Class B 20%																												ALL OTHER Homestead Up to \$4,000 25%
John & Myrtle R. Pratzsch		NE 1/4 of NE 1/4	6	133-29		36.66	150		150	90		30		1	H 30	710		1	PAID IN FULL	MAY 31 1957		710																				
" "		NW 1/4 of NE 1/4				37.78	150		150	30		30		2	H 30	710		2	PAID IN FULL	MAY 31 1957		710																				
Charles & Carol Peterson		SW 1/4 of NE 1/4				40	117		117	39		39		3	H 39	424	20	3	PAID IN FULL	OCT 31 1957		472	9.47																			
" "		SE 1/4 of NE 1/4				40	117		117	39		39		4	H 39	424	20	4	PAID IN FULL	OCT 31 1957		472	9.47																			
		NE 1/4 of NW 1/4												5																												
		NW 1/4 of NW 1/4												6																												
		SW 1/4 of NW 1/4												7																												
		SE 1/4 of NW 1/4												8																												
														9																												
														10																												
Ella Nordine		NE 1/4 of SW 1/4				40.47	120		120	24		24		11	H 24	508																										
" "		NW 1/4 of SW 1/4				40.65	240		240	48		48		12	H 48	1018																										
" "		SW 1/4 of SW 1/4				40	205		205	41		41		13	H 41	868																										
" "		SE 1/4 of SW 1/4				40	415		415	82		82		14	H 82	1760																										
														15																												
Powers Peterson		NE 1/4 of SE 1/4				40	115		115	23		23		16	H 23	488																										
" "		NW 1/4 of SE 1/4				40	115		115	23		23		17	H 23	488																										
" "		SW 1/4 of SE 1/4				40	115		115	23		23		18	H 23	488																										
" "		SE 1/4 of SE 1/4				40	230	75	305	61		61		19	H 61	1292																										
						493.56	2089	75	2164	386	78	464		20	H 326	6910	40																									

ADD'L TO SYDNEY B... SYLVAN SHA... VILLAGE OF SYDNEY... NORTH SYLVAN... CARLTON'S SY...
 133-29
 133-30

Assessment Roll and Tax List of Real Property in the *Town of Sylvia* of *Dakota*

Cass County, Minnesota, for Taxes for the Year 1956.

* Indicate Type of Property: R-Residential, C-Commercial, I-Industrial, U-Utility, F-Farm, L-Lakeshore, T-Timber, M-Mineral

133-29

133-30

IN WHOSE NAME ASSESSED	TO WHOM TRANSFERRED	DESCRIPTION OF PROPERTY	TRUE AND FULL VALUATIONS															SOLD FOR TAXES	VALUATIONS BY SCHOOL DISTRICTS AS EQUALIZED BY DEPARTMENT OF TAXATION						TAX INCLUDING STATE HOMESTEAD	SPECIAL TAXES	TOTAL TAXES	PAID	WHEN PAID	Number of Receipt	March Settlement 1957	June Settlement 1957	November Settlement 1957	Penalty	Collections to First Monday in January 1958	Penalty	Delinquent on First Monday in January 1958	Total Delinquent Tax and Penalty	REMARKS														
			LAND EXCLUSIVE OF STRUCTURES AND IMPROVEMENTS					BUILDINGS AND OTHER STRUCTURES					MACHINERY PERMANENTLY ATTACHED TO REAL ESTATE						TOTAL ASSESSED VALUE					District No.																District No.	District No.	District No.	District No.	District No.	Rate	Rate	Rate	Rate	Rate	Rate	Rate	Rate	Rate
			Dollars	Dollars	Dollars	Dollars	Dollars	Dollars	Dollars	Dollars	Dollars	Dollars	Dollars	Dollars	Dollars	Dollars	Dollars		Dollars	Dollars	Dollars	Dollars	Dollars																														
<i>Don H. Stank & Laura Peterson</i>		1 NE 1/4 of NE 1/4	8 133.29	40																																																	
<i>Minnesota Power & Light Co.</i>		2 NW 1/4 of NE 1/4		40																																																	
<i>"</i>	<i>"</i>	3 SW 1/4 of NE 1/4		40																																																	
<i>"</i>	<i>"</i>	4 SE 1/4 of NE 1/4		40																																																	
<i>Frank Satter Alberta Dykema</i>		6 NE 1/4 of NW 1/4		40																																																	
<i>"</i>	<i>"</i>	7 NW 1/4 of NW 1/4		40																																																	
<i>"</i>	<i>"</i>	8 SW 1/4 of NW 1/4	<i>1/2 of SW 1/4 less 17 ac</i>	63																																																	
<i>Minnesota Power & Light Co.</i>	<i>Alfred & Doris Larsson</i>	11 NE 1/4 of SW 1/4		40																																																	
<i>"</i>	<i>"</i>	12 SW 1/4 of SW 1/4		62																																																	
<i>"</i>	<i>"</i>	13 SE 1/4 of SW 1/4		40																																																	
<i>"</i>	<i>"</i>	14 SE 1/4 of SW 1/4	<i>35 ac of SW 1/4 less 1/4</i>	35																																																	
<i>O.H. Mc Brincher</i>	<i>Minnesota Power & Light Co.</i>	16 NE 1/4 of SE 1/4		40																																																	
<i>"</i>	<i>"</i>	17 NW 1/4 of SE 1/4		40																																																	
<i>"</i>	<i>"</i>	18 SW 1/4 of SE 1/4		40																																																	
<i>O.H. Mc Brincher</i>		19 SE 1/4 of SE 1/4		40																																																	
			16.10																																																		

NORTH SYLVAN PARSONS'S SVL

VILLAGE OF SYLVAN

Assessment Roll and Tax List of Real Property in the Dwain of Dywan
 *Indicate Type of Property: R-Residential, C-Commercial, I-Industrial, U-Utility, F-Farm, L-Lakeshore, T-Timber, M-Mineral

Cass County, Minnesota, for Taxes for the Year 1956.

132-29
133-29

IN WHOSE NAME ASSESSED	TO WHOM TRANSFERRED	SUBDIVISION	Sec. or Lot	Town or Block	Range	Number of Acres of Land	TRUE AND FULL VALUATIONS							Total Assessed Value as Equalized by the Board of Review	FINAL EQUALIZED VALUE	
							LAND Exclusive of Structures and Improvements	BUILDINGS and Other Structures	MACHINERY Permanently Attached to Real Estate	TOTAL True and Full Value	RURAL		ALL OTHER			
						Acres	Dollars	Dollars	Dollars	Dollars	Dollars	Dollars	Dollars	Dollars	Dollars	
John St. Peterson		NE 1/4 of NE 1/4				9 13329	40	140						140	28	
"	"	NW 1/4 of NE 1/4					40	190						190	38	
Ed. J. & Alice L. Peterson		SW 1/4 of NE 1/4					40	140	390					730	146	
"	"	SE 1/4 of NE 1/4 - Lot 3				36 75		60						60	12	
Emily & John St. Peterson		NE 1/4 of NW 1/4					40	365						365	73	
"	"	NW 1/4 of NW 1/4					40	215	750					965	193	
Minnesota Power & Light Co.		SW 1/4 of NW 1/4					40	360						360	120	
"	"	SE 1/4 of NW 1/4					40	360						360	120	
Lawrence Lapka		All of SE 1/4 of NW 1/4 of R 1/2				14		35	50					85	17	
Alice & Ed. J. Peterson		NE 1/4 of SW 1/4					40	120						120	24	
Lawrence & Gertrude Lapka		NW 1/4 of SW 1/4					40	280						280	56	
"	"	SW 1/4 of SW 1/4 - low Ry				36 34		255	300					555	111	
D. R. & Ludmila K. Ruskick		SE 1/4 of SW 1/4 N of R 1/2				14		96						96	32	
Ed. J. & Alice Peterson		SE 1/4 of NE 1/4 of NW 1/4				20		130						130	26	
John & Olga Stratton		NE 1/4 of SE 1/4 - low Ry				9 63		65	130					195	39	
"	"	NW 1/4 of SE 1/4 Lot 2				39 60		325						325	65	
"	"	SW 1/4 of SE 1/4 low Ry				28		145						145	29	
"	"	SE 1/4 of SE 1/4														
						63 32		388	1320					610	122	

SOLD FOR TAXES	VALUATIONS BY SCHOOL DISTRICTS AS EQUALIZED BY DEPARTMENT OF TAXATION						Tax including State Homestead	State Tax on Non-Homestead	SPECIAL TAXES	TOTAL TAXES	PAID	WHEN PAID	Number of Receipt	March Settlement 1957	June Settlement 1957	November Settlement 1957	Penalty	Collections to First Monday in January 1958	Penalty	Delinquent on First Monday in January 1958	Total Delinquent Tax and Penalty	REMARKS
	District No. Rate	District No. Rate	District No. Rate	District No. Rate	District No. Rate	District No. Rate																
	District No. Rate	District No. Rate	District No. Rate	District No. Rate	District No. Rate	\$ cts.	\$ cts.	\$ cts.	\$ cts.		Month Day Year		\$ cts.	\$ cts.	\$ cts.	\$ cts.	\$ cts.	\$ cts.	\$ cts.	\$ cts.		
1	H 28					594			594	1 PAID IN FULL MAY 31 1957		8074		594								
2	H 38					806			806	2 PAID IN FULL MAY 31 1957				806								
3	H 146					3094			3094	3 Balance Paid MAY 31 1957				1547		1547						
4	H 12					254			254	4 Part Paid MAY 31 1957		14689		127		127						
5										5												
6	H 73					1548			1548	6 PAID IN FULL MAY 31 1957		8074		1548								
7	H 193					4090			4090	7 PAID IN FULL MAY 31 1957				4090								
8										8 2nd Half Paid OCT 8 1957		1749										
9										9 1st Half Paid MAY 31 1957		1499		2908		2908						
10										10 2nd Half Paid OCT 31 1957												
11	H 17					360			360	11 PAID IN FULL JAN 30 1957		455		360								
12	H 24					508			508	12 Part Paid MAY 31 1957		8078		254		254						
13	H 56					2186			2186	13 PAID IN FULL MAY 31 1957		8078								1186		
14	H 111					2352			2352	14 PAID IN FULL MAY 31 1957		8078		2352								
15	H 26					552			552	15 PAID IN FULL OCT 31 1957		15395		776								
16	H 39					826			826	16 Balance Paid OCT 8 1957		14689										
17	H 65					1378			1378	17 Part Paid MAY 31 1957		8078		276		276						
18	H 29					614			614	18 PAID IN FULL OCT 31 1957		16883										
19										19												
20	H 857					18162			18162	20				360	14502	8706				1186		

ADD'D 11th 5-15th SYLVAN B.C. SYLVAN VILLAGE OF SYLVAN NORTH SYLVAN CANTON'S SYLVAN

Assessment Roll and Tax List of Real Property in the Town of Hyland

Cass County, Minnesota, for Taxes for the Year 1956.

Indicate Type of Property: R-Residential, C-Commercial, I-Industrial, U-Utility, F-Farm, L-Lakeshore, T-Timber, M-Mineral

133-29 133-29

Table with columns: IN WHOSE NAME ASSESSED, TO WHOM TRANSFERRED, DESCRIPTION OF PROPERTY (Subdivision, Sec. or Lot, Town or Block, No.), TRUE AND FULL VALUATIONS (LAND, BUILDINGS, MACHINERY, TOTAL), ASSESSED VALUATIONS (RURAL, ALL OTHER), and FINAL EQUALIZED VALUE.

Table with columns: SOLD FOR TAXES, VALUATIONS BY SCHOOL DISTRICTS AS EQUALIZED BY DEPARTMENT OF TAXATION, Tax including State Homestead, State Tax on Non-Homestead, SPECIAL TAXES, TOTAL TAXES, PAID, WHEN PAID, Number of Receipt, March Settlement 1957, June Settlement 1957, Penalty, November Settlement 1957, Collections to First Monday in January 1958, Delinquent on First Monday in January 1956, Total Delinquent Tax and Penalty, REMARKS.

1st SYLVAN SHN VILLAGE OF SYLVAN NORTH SYLVAN PARSONS ST

Assessment Roll and Tax List of Real Property in the Town of Sylvan

Cass County, Minnesota, for Taxes for the Year 1956.

Table with columns: IN WHOSE NAME ASSESSED, TO WHOM TRANSFERRED, DESCRIPTION OF PROPERTY, TRUE AND FULL VALUATIONS, ASSESSED VALUATIONS, VALUATIONS BY SCHOOL DISTRICTS AS EQUALIZED BY DEPARTMENT OF TAXATION, TAXES, PAID, WHEN PAID, Number of Receipt, March Settlement 1957, June Settlement 1957, November Settlement 1957, Collections to First Monday in January 1958, Delinquent on First Monday in January 1958, Total Delinquent Tax and Penalty, REMARKS.

133-29

133-30

NORTH SYLVAN PARLOR'S ST.

Assessment Roll and Tax List of Real Property in the Town of Sylvan of Iowa

Indicate Type of Property: R-Residential, C-Commercial, I-Industrial, U-Utility, F-Farm, L-Lakeshore, T-Timber, M-Mineral

Table with columns: IN WHOSE NAME ASSESSED, TO WHOM TRANSFERRED, DESCRIPTION OF PROPERTY, TRUE AND FULL VALUATIONS, ASSESSED VALUATIONS, and FINAL EQUALIZED VALUE. Includes handwritten entries for Minnesota Power & Light Co. and Gull River Country Assn.

Cass County, Minnesota, for Taxes for the Year 1956.

Table with columns: SOLD FOR TAXES, VALUATIONS BY SCHOOL DISTRICTS AS EQUALIZED BY DEPARTMENT OF TAXATION, TAX INCLUDING STATE HOMESTEAD, SPECIAL TAXES, TOTAL TAXES, PAID, WHEN PAID, Number of Receipt, March Settlement 1957, June Settlement 1957, November Settlement 1957, Collections to First Monday in January 1958, Delinquent on First Monday in January 1958, Total Delinquent Tax and Penalty, REMARKS. Includes handwritten tax payment records.

133-29 133-29 133-30 NORTH SYLVAN VILLAGE OF SYLVAN ATTORNEY'S OFFICE

Assessment Roll and Tax List of Real Property in the Town of Lyman, Cass County, Minnesota

Cass County, Minnesota, for Taxes for the Year 1956.

* Indicate Type of Property: R-Residential, C-Commercial, I-Industrial, U-Utility, F-Farm, L-Lakeshore, T-Timber, M-Mineral

Table with columns: IN WHOSE NAME ASSESSED, TO WHOM TRANSFERRED, DESCRIPTION OF PROPERTY, TRUE AND FULL VALUATIONS (RURAL, ALL OTHER, MACHINERY), VALUATIONS BY SCHOOL DISTRICTS, TAXES, PAID, WHEN PAID, and REMARKS. Includes handwritten entries for Minnesota Power & Light Co., Roy & Eva Thom, J.F. & Ellen J. Marlow, etc.

133-29

133-30

133-30

NORTH SYLVAN CARLTON'S SYLVAN VILLAGE OF SYLVAN

Assessment Roll and Tax List of Real Property in the Town of Sylvan

Cass County, Minnesota, for Taxes for the Year 1956.

IN WHOSE NAME ASSESSED	TO WHOM TRANSFERRED	DESCRIPTION OF PROPERTY	TRUE AND FULL VALUATIONS													SOLD FOR TAXES	VALUATIONS BY SCHOOL DISTRICTS AS EQUALIZED BY DEPARTMENT OF TAXATION						State Tax on Non-Homestead	SPECIAL TAXES	TOTAL TAXES	PAID	WHEN PAID	Number of Receipt	March Settlement 1957	June Settlement 1957	Penalty	November Settlement 1957	Penalty	Collections to First Monday in January 1958	Penalty	Delinquent on First Monday in January 1958	Total Delinquent Tax and Penalty	REMARKS						
			LAND EXCLUSIVE OF STRUCTURES AND IMPROVEMENTS			BUILDINGS AND OTHER STRUCTURES			MACHINERY Permanently Attached to Real Estate	TOTAL ASSESSED VALUE	RURAL		ALL OTHER				TOTAL ASSESSED VALUE	VALUATIONS BY SCHOOL DISTRICTS AS EQUALIZED BY DEPARTMENT OF TAXATION																										
			Dollars	Dollars	Dollars	Dollars	Dollars	Dollars	Dollars	Homestead Up to \$1,000 20%	Over \$1,000 and Non-Homestead 33 1/3%	Timber Land Class 3c 20%	Homestead Up to \$1,000 25%	Over \$1,000 and Non-Homestead 40%	MACHINERY Permanently Attached to Real Estate 33 1/3%		Dollars	District No.	District No.	District No.	District No.	District No.																	District No.	\$	cts.	\$	cts.	\$
Minnesota Power & Light Co.		NE 1/4 of NE 1/4																																										

Sylvan 5 1st SYLVAN VILLAGE OF SYLVAN NORTH SYLVAN CARLYON'S SVL

Assessment Roll and Tax List of Real Property in the Town of Sylvan, Cass County, Minnesota, for Taxes for the Year 1956.

Indicate Type of Property: R-Residential, C-Commercial, I-Industrial, U-Utility, F-Farm, L-Lakeshore, T-Timber, M-Mineral

Main table with columns: IN WHOSE NAME ASSESSED, TO WHOM TRANSFERRED, SUBDIVISION, TRUE AND FULL VALUATIONS, ASSESSED VALUATIONS, VALUATIONS BY SCHOOL DISTRICTS AS EQUALIZED BY DEPARTMENT OF TAXATION, Tax including State Homestead, State Tax on Non-Homestead, SPECIAL TAXES, TOTAL TAXES, PAID, WHEN PAID, Number of Receipt, March Settlement 1957, June Settlement 1957, November Settlement 1957, Collections to First Monday in January 1958, Delinquent on First Monday in January 1958, Total Delinquent Tax and Penalty, REMARKS.

133-29

133-30

SYLVAN SIA VILLAGE OF SYLVAN NORTH SYLVAN CARLSON'S SYLVAN

Assessment Roll and Tax List of Real Property in the Town of Sylvan

Indicate Type of Property: R-Residential, C-Commercial, I-Industrial, U-Utility, F-Farm, L-Lake Shore, T-Timber, M-Mineral

Table with columns: IN WHOSE NAME ASSESSED, TO WHOM TRANSFERRED, DESCRIPTION OF PROPERTY, TRUE AND FULL VALUATIONS, ASSESSED VALUATIONS, and FINAL EQUALIZED VALUE. Includes handwritten entries for Adolph & Ethel Stueb, Dewey Mc Minn, N. St. Paper Co., and John C. & Vivian L. Eastman.

Cass County, Minnesota, for Taxes for the Year 1956.

Table with columns: VALUATIONS BY SCHOOL DISTRICTS AS EQUALIZED BY DEPARTMENT OF TAXATION, TAX including State Homestead, State Tax on Non-Homestead, SPECIAL TAXES, TOTAL TAXES, PAID, WHEN PAID, Number of Receipt, March Settlement 1957, June Settlement 1957, Penalty, November Settlement 1957, Penalty, Collections to First Monday in January 1958, Penalty, Delinquent on First Monday in January 1958, Total Delinquent Tax and Penalty, and REMARKS.

133-29, 133-30, NORTH SYLVAN EARTHQUAKE SYLVAN VILLAGE OF SYLVAN

IN WHOSE NAME ASSESSED	TO WHOM TRANSFERRED	DESCRIPTION OF PROPERTY					TRUE AND FULL VALUATIONS						ASSESSED VALUATIONS						SOLD FOR TAXES	VALUATIONS BY SCHOOL DISTRICTS AS EQUALIZED BY DEPARTMENT OF TAXATION						Tax including State Homestead	State Tax on Non-Homestead	SPECIAL TAXES	TOTAL TAXES	PAID	WHEN PAID	Number of Receipt	March Settlement 1957	June Settlement 1957	Penalty	November Settlement 1957	Penalty	Collections to First Monday in January 1958	Penalty	Delinquent on First Monday in January 1958	Total Delinquent Tax and Penalty	REMARKS																			
		SUBDIVISION	Sec. of Lot	Town or Block	Reg.	Number of Acres of Land	LAND Exclusive of Structures and Improvements	BUILDINGS and Other Structures	MACHINERY Permanently Attached to Real Estate	TOTAL True and Full Value	Homestead Up to \$4,000 20%	RURAL Over \$4,000 and Non-Homestead 33 1/3%	Timber Land Class 3e 20%	ALL OTHER Homestead Up to \$4,000 25%	Over \$4,000 and Non-Homestead 40%	MACHINERY Permanently Attached to Real Estate 33 1/3%	TOTAL ASSESSED VALUE	Total Assessed Value as Equalized by the Board of Review		FINAL QUALIFIED VALUE	District No. 1 Rate	District No. 2 Rate	District No. 3 Rate	District No. 4 Rate	District No. 5 Rate																		\$ cts.	\$ cts.	\$ cts.	\$ cts.	\$ cts.	\$ cts.	\$ cts.	\$ cts.	\$ cts.	\$ cts.	\$ cts.	\$ cts.							
State of Minnesota	<i>Part of 8 1/2</i>	NE 1/4 of NE 1/4							30	133	29																																																		
<i>Minnesota Power & Light Co.</i>		NW 1/4 of NE 1/4							40																																																				
"		SW 1/4 of NE 1/4 Lot 3							28	75																																																			
<i>Lucy Swan & Hulda E. Dunaway</i>		SW 1/4 of NE 1/4 Lot 4							14	25																																																			
<i>Minnesota Power & Light Co.</i>		NE 1/4 of NW 1/4 Lot 2							48																																																				
"		NW 1/4 of NW 1/4																																																											
"		SW 1/4 of NW 1/4 Lot 5							35	25																																																			
"		SE 1/4 of NW 1/4 Lot 4							15																																																				
<i>Adie Pierce</i>		NE 1/4 of SE 1/4 Lot 9							34	75																																																			
<i>Adie Pierce</i>		SE 1/4 of SE 1/4 Lot 10							17																																																				
									233																																																				

132-29
133-29

133-30
133-30

Sylvan
VILLAGE OF SYLVAN
NORTH SYLVAN
CARLSON'S SYLVAN

Assessment Roll and Tax List of Real Property in the Town of Hayward of Hayward County, Minnesota

* Indicate Type of Property: R-Residential, C-Commercial, I-Industrial, U-Utility, F-Farm, L-Lakeshore, T-Timber, M-Mineral

IN WHOSE NAME ASSESSED	TO WHOM TRANSFERRED	DESCRIPTION OF PROPERTY				TRUE AND FULL VALUATIONS										FINAL EQUALIZED VALUE	
		SUBDIVISION	Sec. or Lot	Town or Block	Range	Number of Acres of Land	Machinery Permanently Attached to Real Estate	RURAL			ALL OTHER			Machinery Permanently Attached to Real Estate	TOTAL ASSESSED VALUE		Total Assessed Value as Equalized by the Board of Review
								LAND Exclusive of Structures and Improvements	BUILDINGS and Other Structures	TOTAL True and Full Value	Homestead Up to \$4,000 20%	Over \$4,000 and Non-Homestead 33 1/4%	Timber Land Class 2e 20%				
					Acres	Dollars	Dollars	Dollars	Dollars	Dollars	Dollars	Dollars	Dollars	Dollars	Dollars	Dollars	
		NE 1/4 of NE 1/4			32 13329												
		NW 1/4 of NE 1/4															
		SW 1/4 of NE 1/4															
		SE 1/4 of NE 1/4															
State of Minnesota		Lot 3															
		NE 1/4 of NW 1/4															
		NW 1/4 of NW 1/4															
		SW 1/4 of NW 1/4															
		SE 1/4 of NW 1/4															
		NE 1/4 of SW 1/4															
		NW 1/4 of SW 1/4															
		SW 1/4 of SW 1/4															
		SE 1/4 of SW 1/4															
		NE 1/4 of SE 1/4															
		NW 1/4 of SE 1/4															
		SW 1/4 of SE 1/4															
		SE 1/4 of SE 1/4															

Cass County, Minnesota, for Taxes for the Year 1956

SOLD FOR TAXES	VALUATIONS BY SCHOOL DISTRICTS AS EQUALIZED BY DEPARTMENT OF TAXATION						Tax including State Homestead	State Tax on Non-Homestead	SPECIAL TAXES	TOTAL TAXES	PAID	WHEN PAID	Number of Receipt	March Settlement 1957	June Settlement 1957	Penalty	November Settlement 1957	Penalty	Collections to First Monday in January 1958	Penalty	Delinquent on First Monday in January 1958	Total Delinquent Tax and Penalty	REMARKS
	District No.	District No.	District No.	District No.	District No.	District No.																	
	Rate	Rate	Rate	Rate	Rate	Rate																	

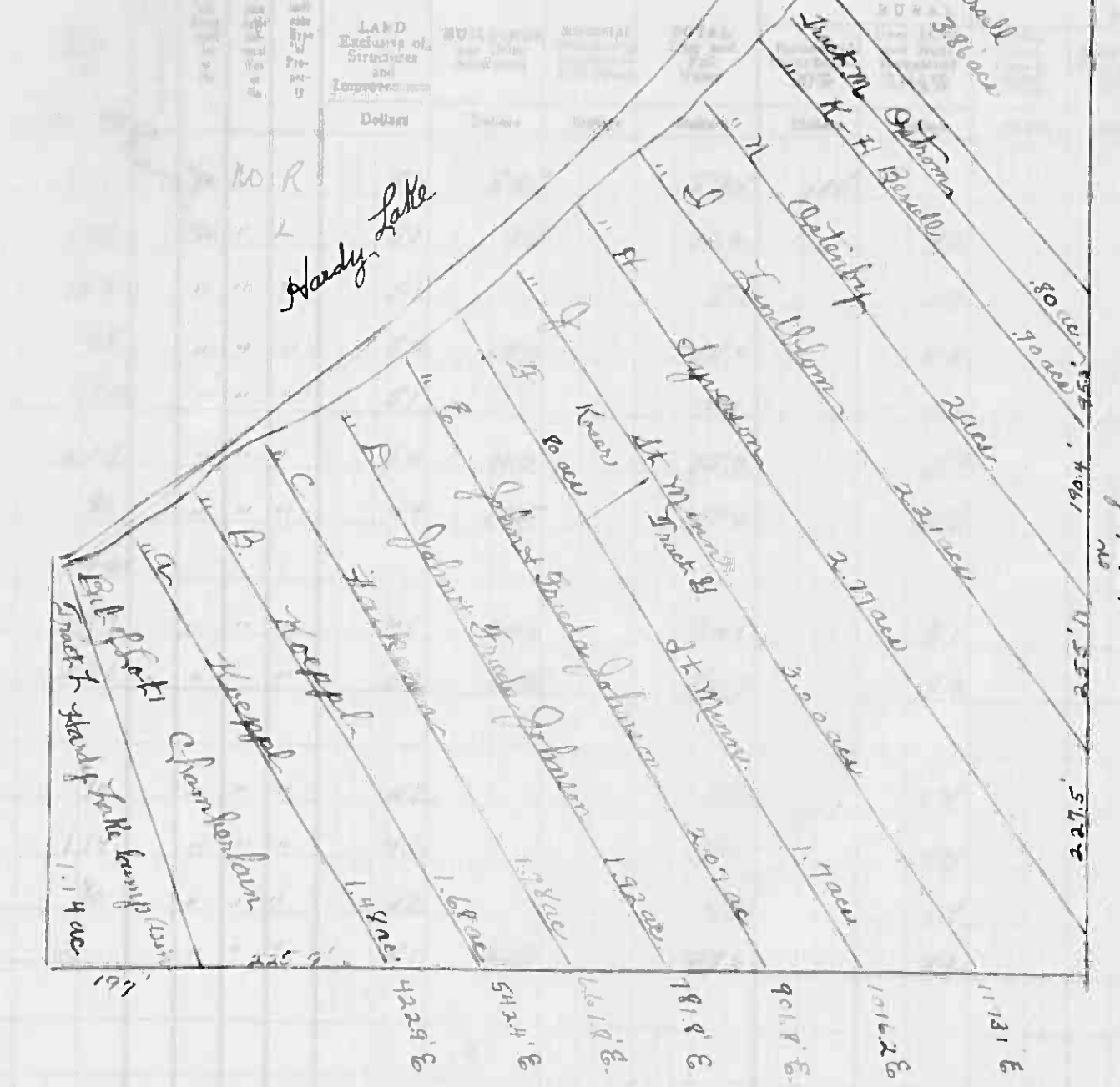
133-29 133-30 NORTH SYLVAN CARLSON'S SYLVAN VILLAGE OF SYLVAN

Assessment Roll and Tax List of Real Estate

Cass County, Minnesota, for Taxes for the Year-1956.

Indicate Type of Property: R-Residential, C-Commercial, I-Industrial, L-Lakeshore, T-Timber, M-Mineral

Lot 1 Sec. 33-133-27 TRUE AND FULL VALUATIONS



IN WHOSE NAME ASSESSED	TO WHOM TRANSFERRED	DESCRIPTION
Michael & Olga A. Chamberlain		Lot 1 sec 33-133-27 NE 1/4 of NE 1/4
Joseph Kropp		1.48 acs of Lot 1 (Dr)
Edward & Susan Heikkinen		1.63 acs of Lot 1 (Dr)
Russell K. & Hilma & Sigvald Johnson		1.76 acs of Lot 1 (Dr)
Merrill & Inez Gross		2.07 acs of Lot 1 (Dr)
Julius & Anna Syverson		1.70 acs of Lot 1 (Dr)
Conrad C. & Eva M. Lindblom		2.21 acs of Lot 1 (Dr)
Donald H. & Leone Brunell		3.00 acs of Lot 1 (Dr)
Hardy Lake Camp Ass'n Inc		1.14 acs of Lot 1 (Dr)
Hilding L. & Eunice C. Ostrem		.80 acs of Lot 1 (Dr)
Edna & Vernon C. Ostrem		2.00 acs of Lot 1 (Dr)
Augs & Hilda Brunell		3.86 acs of Lot 1 (Dr)

VALUATIONS				
OTHER	MACHINERY	TOTAL ASSESSED	Total Assessed Value as Equalized by the Board of Review	FINAL EQUALIZED VALUE
Over \$4,000 and Non-Homestead 40%	Permanently Attached to Real Estate 33 1/3%	Dollars	Dollars	Dollars
		115		
		42		
		17		
		50		
		17		
		50		
		58		
		87		
		89		
		14		
		14		
		14		
		92		
		67		
		726		

SOLD FOR TAXES	VALUATIONS BY SCHOOL DISTRICTS AS EQUALIZED BY DEPARTMENT OF TAXATION						Tax Including State Homestead	State Tax on Non-Homestead	SPECIAL TAXES	TOTAL TAXES	PAID	WHEN PAID	Number of Receipt	March Settlement 1957	June Settlement 1957	Penalty	November Settlement 1957	Penalty	Collections to First Monday in January 1958	Penalty	Delinquent on First Monday in January 1958	Total Delinquent Tax and Penalty	REMARKS
	District No.	District No.	District No.	District No.	District No.	District No.																	
1							2702			2702	1 PAID IN FULL	MAY 20 1957	6190		2702								
2							986	22		1008	2 PAID IN FULL	MAY 17 1957			1008								
3							400	10		410	3 PAID IN FULL	MAY 17 1957	6490		410								
4							1174	26		1200	4 PAID IN FULL	MAY 31 1957	9086		1200								
5							400	10		410	5											410 x 451	
6							1174	26		1200	6											1200 x 130	
7							1362	30		1392	7 PAID IN FULL	MAY 4 1957	3899		1392								
8											8												
9							2044	46		2090	9 PAID IN FULL	MAY 16 1957	6419		2090								
10							2090	48		2138	10 PAID IN FULL	MAY 20 1957	6194		2138								
11											11												
12							328	08		336	12 PAID IN FULL	MAY 17 1957	6473		336								
13							328	08		336	13											336	
14							328	08		336	14											336	
15							2160	50		2210	15 PAID IN FULL	MAY 21 1957	6264		2210								
16											16												
17											17												
18											18												
19											19												
20							1574			1574	20												
							17050	292		17342													

NORTH SYLVAN CARLYON'S SVT
 VILLAGE OF SYLVAN
 133-30
 ADDN TO SYLVAN BELT

Form 301 (58) ... of ...

IN WHOSE NAME ASSESSED	TO WHOM TRANSFERRED	LAND VALUE	BUILDING VALUE	ASSESSOR'S VALUATIONS	FINAL EQUALIZED VALUE
Olaf Bjornstad		46		107	107
Walter B. & Wilhelmine H. Horn		34		72	72
Olaf Bjornstad		24		10	10
Walter B. & Wilhelmine Horn				65	65
"				10	10
Herman Holmquist				45	45
Ralph E. & Carmelyte Anderson				12	12
"				73	73
Harry N. & Alice A. Ostrom				45	45
"				12	12
Olaf Bjornstad				18	18
"				8	8
"				10	10
"				2	2
NEW					
NW					
SW					
SE					

(Continued on next page for section 33)



SCALE 1" = 200'

Exit Lot 2 Sec 33-135-29

This map drawn from Reg. of Deeds records 3-9-53

- A. Horn
- B. Horn
- C. N. Horn
- D. R. C. Anderson
- E. Bjornstad
- F. Holmquist
- G. Bjornstad
- H. Bjornstad
- I. H. & A. Ostrom
- J. R. C. Anderson
- K. H. A. Ostrom
- L. L. W. Horn
- M. Bjornstad

11.82 ac

302 ac road

1168 1168 1132 73 1124

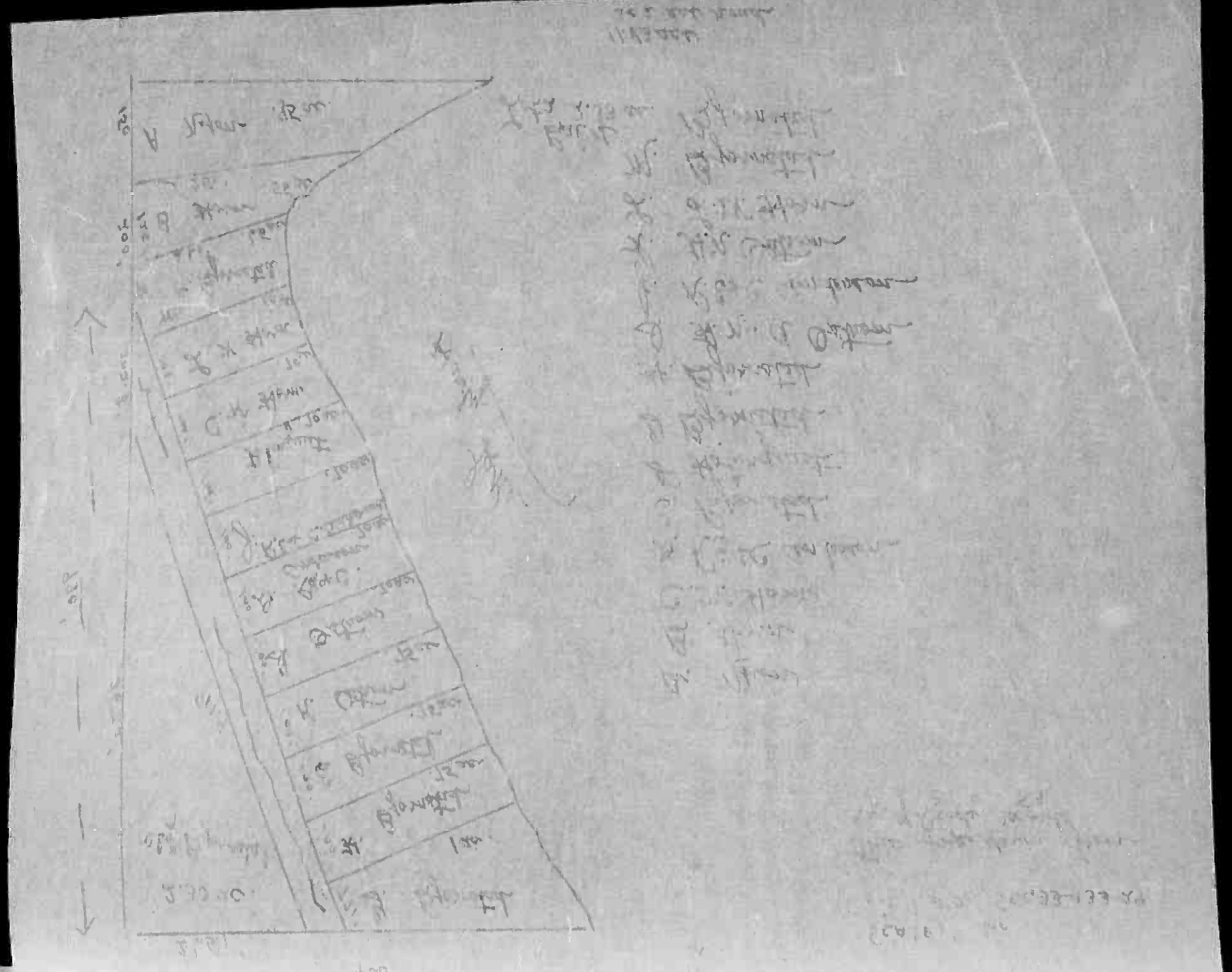
SOLD FOR TAXES	VALUATIONS BY SCHOOL DISTRICTS AS EQUALIZED BY DEPARTMENT OF TAXATION					Tax including State Homestead	State Tax on Non-Homestead	SPECIAL TAXES	TOTAL TAXES	PAID	WHEN PAID	Number of Receipt	March Settlement 1957	June Settlement 1957	Penalty	November Settlement 1957	Penalty	Collections to First Monday in January 1958	Penalty	Delinquent on First Monday in January 1958	Total Delinquent Tax and Penalty	REMARKS	
	District No.	District No.	District No.	District No.	District No.																		
1						2514	58		2572	PAID IN FULL	MAY 1 8 1957	6497											
2						1692			1692	PAID IN FULL	DEC 2 8 1957	17445						1692	68				
3						234	06		240	PAID IN FULL	MAY 1 8 1957	6497											
4						1526	34		1560	PAID IN FULL	MAY 1 8 1957												
5						234	06		240	PAID IN FULL	MAY 1 8 1957	6501											
6						1056	24		1080	PAID IN FULL	MAY 2 1 1957	6263											
7						282	06		288	PAID IN FULL	MAY 1 8 1957												
8						1714	38		1752	PAID IN FULL	MAY 1 8 1957	6508											
9						1056	24		1080	PAID IN FULL	MAY 3 1 1957	9087											
10						282	06		288	PAID IN FULL	MAY 3 1 1957												
11						422	10		432	PAID IN FULL	MAY 1 8 1957												
12						188	04		192	PAID IN FULL	MAY 1 8 1957												
13						234	06		240	PAID IN FULL	MAY 1 8 1957	6499											
14						212	04		216	PAID IN FULL	MAY 1 8 1957												
15																							
16																							
17																							
18																							
19																							
20																							

1168 1168 1132 73 1124

10180 1692

NORTH SYLVAN VILLAGE OF SYLVAN

Assessment Roll a



Indicate Type of Property: R-Residential, C-Commercial, I-Industrial, U-Utility, F-Farm, L-Lakeshore, T-Timber, M-Mineral

IN WHOSE NAME ASSESSED	TO WHOM TRANSFERRED	DESCRIPTION OF PROPERTY		TRUE AND FULL VALUATIONS										TOTAL ASSESSED VALUE	Total Amount Value of Homestead by the Board of Review	FINAL EQUALIZED VALUE	REMARKS
		Subdivision	Acres	ASSESSED VALUATIONS				ASSESSED VALUATIONS									
				LAND	BUILDINGS	MACHINERY	TOTAL	RURAL	ALL OTHER	MACHINERY	TOTAL	ASSESSED	VALUE				
Alison H. & Esther L. Johnson		85 ac of Lot 2 (Tract 1)	3.13379	85	100	L	46	275	321	107				107			
Walter E. & Madeline H. Horn		55 ac of Lot 2 (Tract 1)		55	100	R	30	330	360	72				72			
Olaf Bjornstah		65 ac of Lot 2 (Tract 1)		65	100	L	30		30	10				10			
Walter E. & Madeline Horn		70 ac of Lot 2 (Tract 1)		70	100	"	35	160	195	65				65			
"		70 ac of Lot 2 (Tract 1)		70	100	"	30		30	10				10			
Herman Holquist		70 ac of Lot 2 (Tract 1)		70	100	"	35	100	135	45				45			
Ralph E. & Carmelita Anderson		70 ac of Lot 2 (Tract 1)		70	100	"	36		36	12				12			
"		70 ac of Lot 2 (Tract 1)		70	100	L	44	175	219	73				73			
Harry & Alice A. Ostrom		70 ac of Lot 2 (Tract 1)		70	100	"	35	100	135	45				45			
"		75 ac of Lot 2 (Tract 1)		75	100	"	36		36	12				12			
Olaf Bjornstah		75 ac of Lot 2 (Tract 1)		75	100	"	30	24	54	18				18			
"		75 ac of Lot 2 (Tract 1)		75	100	"	24		24	8				8			
"		1.00 ac of Lot 2 (Tract 1)		1.00	100	"	30		30	10				10			
"		233 ac of Lot 2		233	100	"	27		27	9				9			
16		NW 1/4															
17		NW 1/4															
18		SW 1/4															
19		SE 1/4															
20																	

(Continued on next page for section 33)

Cass County, Minnesota, for Taxes for the Year 1956.

SOLD FOR TAXES	VALUATIONS BY SCHOOL DISTRICTS AS EQUALIZED BY DEPARTMENT OF TALLATION						Tax Including State Homestead	State Tax on Non-Homestead	SPECIAL TAXES	TOTAL TAXES	PAID	WHEN PAID	Number of Receipt	March Settlement 1957	June Settlement 1957	November Settlement 1957	Penalty	Collections to First Monday in January 1958	Penalty	Delinquent on First Monday in January 1956	Total Delinquent Tax and Penalty	REMARKS
	District No.	District No.	District No.	District No.	District No.	District No.																
	Rate	Rate	Rate	Rate	Rate	Rate																
1							25.14	58	25.72	PAID IN FULL	MAY 13 1957	6477										
2							16.92		16.92	PAID IN FULL	DEC 25 1957	17445										16.92 68
3							2.34	06	2.40	PAID IN FULL	MAY 1 8 1957	6477										2.40
4							15.26	34	15.60	PAID IN FULL	MAY 1 8 1957											15.60
5							2.34	06	2.40	PAID IN FULL	MAY 1 8 1957	6501										2.40
6							10.56	24	10.80	PAID IN FULL	MAY 2 1 1957	6263										10.80
7							2.82	06	2.88	PAID IN FULL	MAY 1 8 1957											2.88
8							17.14	38	17.52	PAID IN FULL	MAY 1 8 1957	6508										17.52
9							10.56	24	10.80	PAID IN FULL	MAY 3 1 1957	9087										10.80
10							2.82	06	2.88	PAID IN FULL	MAY 3 1 1957											2.88
11							4.22	10	4.32	PAID IN FULL	MAY 1 8 1957											4.32
12							1.88	04	1.92	PAID IN FULL	MAY 1 8 1957											1.92
13							2.34	06	2.40	PAID IN FULL	MAY 1 8 1957	6499										2.40
14							2.12	04	2.16	PAID IN FULL	MAY 2 8 1957											2.16
15																						
16																						
17																						
18																						
19																						
20																						

4.72
4.24
4.96
116.46 22.26
118.72
101.50
16.92

Assessment Roll and Tax List of Real Property in the Town of Lybourn, Cass County, Minnesota, for Taxes for the Year 1956.

Indicate Type of Property: R-Residential, C-Commercial, I-Industrial, U-Utility, F-Farm, L-Lakeshore, T-Timber, M-Mineral

Table with columns: IN WHOSE NAME ASSESSED, TO WHOM TRANSFERRED, DESCRIPTION OF PROPERTY, TRUE AND FULL VALUATIONS, ASSESSED VALUATIONS, and FINAL EQUALIZED VALUE. Includes handwritten entries for Hardy Lake Camps, Ole Peterson, John O. Ferris, Gordon H. Rasmussen, etc.

(Continued on next page for section 33) 292 15

Cass County, Minnesota, for Taxes for the Year 1956.

Table with columns: SOLD FOR TAXES, VALUATIONS BY SCHOOL DISTRICTS AS EQUALIZED BY DEPARTMENT OF TAXATION, TAX INCLUDING STATE HOMESTEAD, SPECIAL TAXES, TOTAL TAXES, PAID, WHEN PAID, Number of Receipt, March Settlement, June Settlement, November Settlement, Collections to First Monday in January, Delinquent on First Monday in January, Total Delinquent Tax and Penalty, REMARKS.

132-29

133-30

1st SYLVAN SH. VILLAGE OF SYLVAN NORTH SYLVAN CANTON'S SYLVAN

Assessment Roll and Tax List of Real Property in the Town of Sylva

Cass County, Minnesota, for Taxes for the Year 1956.

Form 50 (5-54) UNLAW-DATA COMPANY, MINNEAPOLIS

Indicate Type of Property: R-Residential, C-Commercial, I-Industrial, U-Utility, F-Farm, L-Lakeshore, T-Timber, M-Mineral

DESCRIPTION OF PROPERTY

TRUE AND FULL VALUATIONS

ASSESSED VALUATIONS

VALUATIONS BY SCHOOL DISTRICTS AS EQUALIZED BY DEPARTMENT OF TAXATION

Main data table with columns: IN WHOSE NAME ASSESSED, TO WHOM TRANSFERRED, SUBDIVISION, TRUE AND FULL VALUATIONS (LAND, BUILDINGS, MACHINERY, TOTAL), ASSESSED VALUATIONS (RURAL, ALL OTHER, MACHINERY, TOTAL ASSESSED VALUE, TOTAL ASSESSED VALUE as Equalized by the Board of Review, FINAL EQUALIZED VALUE), VALUATIONS BY SCHOOL DISTRICTS AS EQUALIZED BY DEPARTMENT OF TAXATION, Tax including State Homestead, State Tax on Non-Homestead, SPECIAL TAXES, TOTAL TAXES, PAID, WHEN PAID, Number of Receipt, March Settlement 1957, June Settlement 1957, November Settlement 1957, Collections to First Monday in January 1958, Delinquent on First Monday in January 1958, Total Delinquent Tax and Penalty, REMARKS

Alvin D. Johnson 1/3, Adolph Hagen 1/6, John Hagen 1/6, Hydorn A. Hansen 1/6, Johannes B. Hansens 1/6

132-29 133-30

1st SYLVAN SIA VILLAGE OF SYLVAN NORTH SYLVAN CARLTON'S SYLVAN

Assessment Roll and Tax List of Real Property in the Town of Lyle

Cass County, Minnesota, for Taxes for the Year 1956.

Form SC (56) 1955-56 STATE OF MINNESOTA

Table with columns: IN WHOSE NAME ASSESSED, TO WHOM TRANSFERRED, SUBDIVISION, TRUE AND FULL VALUATIONS, ASSESSED VALUATIONS, VALUATIONS BY SCHOOL DISTRICTS AS EQUALIZED BY DEPARTMENT OF TAXATION, TAX INCLUDING STATE HOMESTEAD, SPECIAL TAXES, TOTAL TAXES, PAID, WHEN PAID, Number of Receipt, March Settlement 1957, June Settlement 1957, November Settlement 1957, Collections to First Monday in January 1958, Delinquent on First Monday in January 1958, Total Delinquent Tax and Penalty, REMARKS.

133-29 133-30

151st SYLVAN ST. VILLAGE OF SYLVAN NORTH SYLVAN CARLYON'S ST.

Assessment Roll and Tax List of Real Property in the Town of Sylvan,

Cass County, Minnesota, for Taxes for the Year 1956.

* Indicate Type of Property: R-Residential, C-Commercial, I-Industrial, U-Utility, F-Farm, L-Lakeshore, T-Timber, M-Mineral

132-29 133-30

Table with columns: IN WHOSE NAME ASSESSED, TO WHOM TRANSFERRED, DESCRIPTION OF PROPERTY, TRUE AND FULL VALUATIONS, ASSESSED VALUATIONS, VALUATIONS BY SCHOOL DISTRICTS AS EQUALIZED BY DEPARTMENT OF TAXATION, TAXES, PAID, WHEN PAID, Number of Receipt, March Settlement 1957, June Settlement 1957, November Settlement 1957, Collections to First Monday in January 1958, Delinquent on First Monday in January 1958, Total Delinquent Tax and Penalty, REMARKS.

(Continued on next page)

1st SYLVAN STA VILLAGE OF SYLVAN NORTH SYLVAN CARLTON'S SYLVAN

Assessment Roll and Tax List of Real Property in the *Down* of *Sylvan*

Cass County, Minnesota, for Taxes for the Year 1956.

* Indicate Type of Property: R-Residential, C-Commercial, I-Industrial, U-Utility, F-Farm, L-Lakeshore, T-Timber, M-Mineral

133-29
133-30

IN WHOSE NAME ASSESSED	TO WHOM TRANSFERRED	DESCRIPTION OF PROPERTY			TRUE AND FULL VALUATIONS							ASSESSED VALUATIONS					FINAL EQUALIZED VALUE
		SUBDIVISION	Sec. of Lot	Town or Block	Number of Acres of Land	LAND Exclusive of Structures and Improvements	BUILDINGS and Other Structures	MACHINERY Permanently Attached to Real Estate	TOTAL True and Full Value	RURAL			ALL OTHER		TOTAL ASSESSED VALUE	Total Assessed Value as Equalized by the Board of Review	
										Homestead Up to \$4,000 20%	Over \$4,000 and Non-Homestead 33 1/3%	Timber Land Clause 20%	Homestead Up to \$4,000 25%	Over \$4,000 and Non-Homestead 40%			
					Acres	Dollars	Dollars	Dollars	Dollars	Dollars	Dollars	Dollars	Dollars	Dollars	Dollars	Dollars	Dollars
			4	133	30												
<i>Donald R. Farmer</i>					18.50	126			126	42			42				
" "					40.00	120			120	40			40				
<i>Helen A. Farmer</i>					20.00	140	220		360	120			120				
<i>Allen E. & Ethel E. Rogers</i>					40.00	159			159	53			53				
" "					40.00	159			159	53			53				
<i>Donald R. Farmer</i>					40	120			120	40			40				
<i>Harold H. Dorsey</i>					40	199	335		534	178			178				
<i>Allen E. & Ethel E. Rogers</i>					40	120			120	40			40				
					40	120			120	40			40				
<i>Leslie E. & Rose M. Pietz</i>					40	120			120	24			24				
<i>Leslie E. & Rose M. Pietz</i>					40	228			228	76			76				
" "					40	345			345	115			115				
<i>Leslie E. & Rose M. Pietz</i>					40	430			430	86			86				
					398.50				2701	110			110				

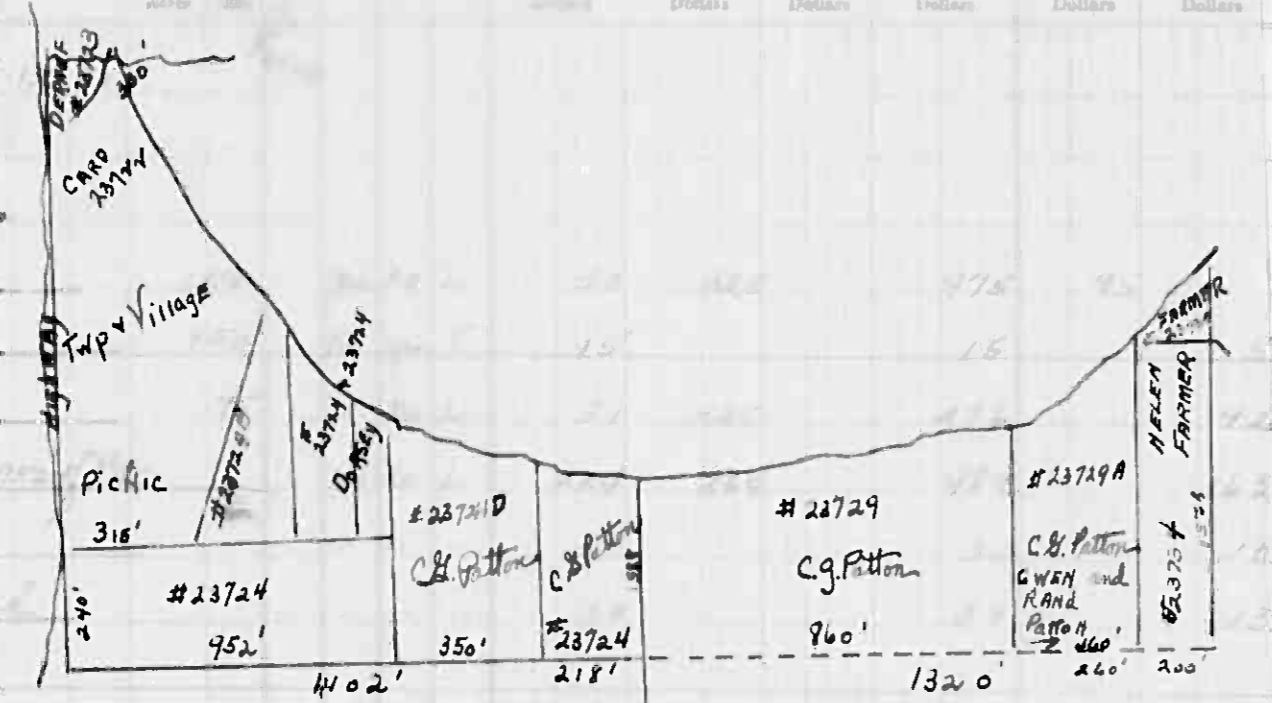
SOLD FOR TAXES	VALUATIONS BY SCHOOL DISTRICTS AS EQUALIZED BY DEPARTMENT OF TAXATION						Tax Including State Homestead	State Tax on Non-Homestead	SPECIAL TAXES	TOTAL TAXES	PAID	WHEN PAID	Number of Receipt	March Settlement 1957	June Settlement 1957	Penalty	November Settlement 1957	Penalty	Collection to First Monday in January 1958	Penalty	Delinquent on First Monday in January 1958	Total Delinquent Tax and Penalty	REMARKS
	District No. 1	District No. 2	District No. 3	District No. 4	District No. 5	District No. 6																	
	Rate	Rate	Rate	Rate	Rate	Rate																	
						\$ cts.	\$ cts.	\$ cts.	\$ cts.	Month	Day	Year	\$ cts.	\$ cts.	\$ cts.	\$ cts.	\$ cts.	\$ cts.	\$ cts.	\$ cts.	\$ cts.		

1st SYLVAN SHS VILLAGE OF SYLVAN NORTH SYLVAN CARLSON'S SYLVAN

Assessment Roll and Tax List of F

Cass County, Minnesota, for Taxes for the Year 1956.

IN WHOSE NAME ASSESSED	TO WHOM TRANSFERRED	DESCRIPTION OF PROPERTY	TRUE AND FULL VALUATIONS		ASSESSED VALUATIONS					TOTAL ASSESSED VALUE	TOTAL VALUE AS EQUALIZED BY BOARD OF REVIEW	PENALTY
			Land	Improvements	Timber	Homestead	Over \$4,000 and Non-Homestead	Machinery	Other			
		NE 1/4 of NE 1/4										
		NW 1/4 of NE 1/4										
		Part of Lot 2								95		
		Part of Lot 2, E of Road								5		
		Part of Lot 2								92		
		E. 218' of Lot 2 & 240' of 2nd								163		
		E. 350' of 2nd 1102' of Lot 2								10		
		Part of Lot 2 E. of road								13		
		NE 1/4 of SW 1/4										
		NW 1/4 of SW 1/4										
		SW 1/4 of SW 1/4										
		SE 1/4 of SW 1/4										
		Lot 1 less that part lying NE 1/4 of SW 1/4										
		E. 218' of Lot 2								32		
		N. 860' of Lot 1 N. of extended								14		
		E. 21/4 line								20		
		21/4 of Lot 1 lying N. of E. 21/4								20		
		21/4 of E. 460' of Lot 1								20		



Twp. of Sylvan, May Fairview & Village of Village
m.w. + Evelyn S. Malone
Edwin Newmark

Harnet B. Derauf
Edward J. Dorsey

Carroll St. Luwendel Patton

Edward J. + Agnes J. Dorsey

Ralph A. + Rose A. Cole
Helen A. Farmer
Donald R. Farmer
Carroll St. Luwendel Patton

(Continued on next page)

SOLD FOR TAXES	VALUATIONS BY SCHOOL DISTRICTS AS EQUALIZED BY DEPARTMENT OF TALLATION						Tax including State Homestead	State Tax on Non-Homestead	SPECIAL TAXES	TOTAL TAXES	PAID	WHEN PAID	Number of Receipt	March Settlement 1957	June Settlement 1957	Penalty	November Settlement 1957	Penalty	Collections to First Monday in January 1958	Penalty	Delinquent on First Monday in January 1958	Total Delinquent Tax and Penalty	REMARKS
	District No.	District No.	District No.	District No.	District No.	District No.																	

ADDN TO SYLVAN BE
 1ST SYLVAN SHA
 VILLAGE OF SYLVAN
 NORTH SYLVAN
 CARLYON'S SYLVAN

Assessment Roll and Tax List of Real Property in the *South* of *Spain*

* Indicate Type of Property: R-Residential, C-Commercial, I-Industrial, U-Utility, F-Farm, L-Lakeshore, T-Timber, M-Mineral

FORM-5-CID (50) BULLETIN COMPANY, BANGOR, ME.

Table with columns: IN WHOSE NAME ASSESSED, TO WHOM TRANSFERRED, DESCRIPTION OF PROPERTY, TRUE AND FULL VALUATIONS, ASSESSED VALUATIONS, and FINAL EQUALIZER VALUE.

Cass County, Minnesota, for Taxes for the Year 1956.

Table with columns: VALUATIONS BY SCHOOL DISTRICTS AS EQUALIZED BY DEPARTMENT OF TAXATION, TAX INCLUDING STATE HOMESTEAD, SPECIAL TAXES, TOTAL TAXES, PAID, WHEN PAID, Number of Receipt, March Settlement, June Settlement, November Settlement, Collections to First Monday in January, Delinquent on First Monday in January, Total Delinquent Tax and Penalty, REMARKS.

133-29

133-30

1st SYLVAN Bldg VILLAGE OF SYLVAN NORTH SYLVAN CARLYON'S SYLVAN

Assessment Roll and Tax List of Real Property in the Town of Sylvan

Indicate Type of Property: R-Residential, C-Commercial, I-Industrial, U-Utility, F-Farm, L-Lakeshore, T-Timber, M-Mining

Cass County, Minnesota, for Taxes for the Year 1956.

Form SCD 1750

Table with columns: IN WHOSE NAME ASSESSED, TO WHOM TRANSFERRED, DESCRIPTION OF PROPERTY, TRUE AND FULL VALUATIONS, ASSESSED VALUATIONS, VALUATIONS BY SCHOOL DISTRICTS AS EQUALIZED BY DEPARTMENT OF TAXATION, TAXES, PAID, WHEN PAID, Number of Receipt, March Settlement 1957, June Settlement 1957, Penalty, November Settlement 1957, Penalty, Collections to First Monday in January 1958, Penalty, Delinquent on First Monday in January 1958, Total Delinquent Tax and Penalty, REMARKS.

133-29 133-30

ADJ. CLERK OF SYLVAN BLDG. NORTH SYLVAN VILLAGE OF SYLVAN NORTH SYLVAN CARLTON'S SYLVAN

Assessment Roll and Tax List of Real Property in the South of Sylvan

* Indicate Type of Property: R-Residential, C-Commercial, I-Industrial, U-Utility, F-Farm, L-Lakeshore, T-Timber, M-Mineral

IN WHOSE NAME ASSESSED	TO WHOM TRANSFERRED	SUBDIVISION	Sec. of Lot	Town or Block	Range	Number of Acres of Land	No. School District	Indicate if Homestead	Indicate if Agricultural	Indicate if Timber	TRUE AND FULL VALUATIONS		ASSESSED VALUATIONS						FINAL EQUALIZED VALUE						
											LAND Exclusive of Structures and Improvements	BUILDINGS and Other Structures	MACHINERY Permanently Attached to Real Estate	TOTAL True and Full Value	RURAL		ALL OTHER			TOTAL ASSESSED VALUE	Total Assessed Value as Equalized by the Board of Review				
															Dollars	Dollars	Dollars	Dollars				Dollars	Dollars	Dollars	Dollars
Arno & Clara L. Rauler	"	NE 1/4 of NE 1/4	7	133	30	40					350	350	70				70								
"	"	NW 1/4 of NE 1/4				40					240	300	540	108			108								
O. A. & Emma Bernth	"	SW 1/4 of NE 1/4				40					180		180	60			60								
"	"	SE 1/4 of NE 1/4				40					180		180	60			60								
Vern & Florie Mann	"	NE 1/4 of NW 1/4				40					350	100	450	90			90								
"	"	E 24 1/2 acs of Lot 1 NW 1/4 of NW 1/4				24 1/2					90		90	18			18								
"	"	SW 1/4 of NW 1/4 Lot 2				44 96					170		170	34			34								
"	"	SE 1/4 of NW 1/4				40					260		260	52			52								
Ernest & Ethel Whipple	Lyle & Broady	SE 1/4 of NW 1/4				40					160	125	285	95			95								
Amich Bernth	"	NE 1/4 of SW 1/4				40					150		150	50			50								
"	"	NW 1/4 of SW 1/4 Lot 3				45 21					159		159	52			52								
"	"	SW 1/4 of SW 1/4 Lot 4				45 47					141		141	47			47								
"	"	SE 1/4 of SW 1/4				40					240	376	606	222			222								
Stanley & Emma Beck	"	NE 1/4 of SE 1/4				40					220		220	44			44								
"	"	NW 1/4 of SE 1/4				40					135		135	27			27								
"	"	SW 1/4 of SE 1/4				40					240	50	240	108			108								
Michael J. Wright	"	SW 1/4 of SE 1/4				20					105	100	205	53			53								
Demet. J. Phillips	"	E 1/2 of SW 1/4 of SE 1/4				20					155	50	205	41			41								
						600 30					3845	1001	5286	705	587		1392								

Cass County, Minnesota, for Taxes for the Year 1956.

SOLD FOR TAXES	VALUATIONS BY SCHOOL DISTRICTS AS EQUALIZED BY DEPARTMENT OF TAXATION						Tax Including State Homestead	State Tax on Non-Homestead	SPECIAL TAXES	TOTAL TAXES	PAID	WHEN PAID	Number of Receipt	March Settlement 1957	June Settlement 1957	Penalty 1957	November Settlement 1957	Collections to First Monday in January 1958	Penalty 1958	Delinquent on First Monday in January 1958	Total Delinquent Tax and Penalty	REMARKS
	District No.	District No.	District No.	District No.	District No.	District No.																
	Rate	Rate	Rate	Rate	Rate	Rate																
	Mills	Mills	Mills	Mills	Mills	Mills																
1	H 70						1484		1484	1	PAID IN FULL MAY 31 1957	9100										
2	H 108						2290		2290	2	PAID IN FULL MAY 31 1957	9100										
3	H 60						1272	32	1304	3	1st Half Paid MAY 31 1957	16640										
4	H 60						1272	32	1304	4	2nd Half Paid OCT 31 1957	9089										
5										5												
6	H 90						1908		1908	6	PAID IN FULL AUG 27 1957											
7	H 18						382		382	7	PAID IN FULL AUG 27 1957	4203			44 1/2		1 04					
8	H 34						720		720	8	PAID IN FULL AUG 27 1957											
9	H 52						1002		1002	9	PAID IN FULL AUG 27 1957											
10	H 95						2014	50	2064	10	1st Half Paid OCT 31 1957	15503										
11	H 50						1060	26	1086	11	2nd Half Paid MAY 31 1957	7684										
12	H 52						1124	28	1152	12	1st Half Paid OCT 31 1957	16864										
13	H 41						996	26	1022	13	2nd Half Paid MAY 31 1957	9264										
14	H 222						4706	118	4824	14	1st Half Paid OCT 31 1957											
15										15												
16	H 44						932		932	16	PAID IN FULL MAY 31 1957											
17	H 27						572		572	17	PAID IN FULL MAY 31 1957	1025										
18	H 168						3560		3560	18	PAID IN FULL MAY 31 1957											
19	H 52						1124		1124	19	PAID IN FULL MAY 16 1957	6429										
20	H 41						868		868	20	PAID IN FULL MAY 31 1957	9156										
	H 705						27386	312	27698													

ADDED TO SYLVAN BE... SYLVAN SIA... VILLAGE OF SYLVAN... NORTH SYLVAN CANYON'S SYLVAN

Assessment Roll and Tax List of Real Property in the *Dunbar* of *Sylvania*

* Indicate Type of Property: R-Residential, C-Commercial, I-Industrial, U-Utility, F-Farm, L-Lakeshore, T-Timber, M-Mineral

Form 30 (50)

Cass County, Minnesota, for Taxes for the Year 1956.

IN WHOSE NAME ASSESSED		TO WHOM TRANSFERRED		DESCRIPTION OF PROPERTY						TRUE AND FULL VALUATIONS								ASSESSED VALUATIONS				FINAL EQUALIZED VALUE
Subdivision	Sec. or Lot	Town or Block	Rnk.	Number of Acres of Land		No. School District	Indicate Homestead Yes or No	Indicate Agricultural Yes or No	Indicate Type of Property	LAND EXCLUSIVE OF STRUCTURES AND IMPROVEMENTS	BUILDINGS AND OTHER STRUCTURES	MACHINERY PERMANENTLY ATTACHED TO REAL ESTATE	TOTAL True and Full Value	RURAL		ALL OTHER			TOTAL ASSESSED VALUE	Total Assessed Value as Equalized by the Board of Review		
				Acres	100th									Homestead Up to \$1,000	Over \$1,000 and Non-Homestead	Timber Land Class B or 20%	Homestead Up to \$1,000	Over \$1,000 and Non-Homestead			MACHINERY Permanently Attached to Real Estate	
Raphel A. & Bernice Agnes Cook				NE 1/4 of NE 1/4	8	133	30	46	425	200		425	85						85			
Annah Berneth				NW 1/4 of NE 1/4			40		120			120	40						40			
				SW 1/4 of NE 1/4			40		120			120	40						40			
Wm. L. Gerrels				SE 1/4 of NE 1/4			40		80			80	16						16			
				NE 1/4 of NW 1/4			40		225	575		800	160						160			
				NW 1/4 of NW 1/4			40		240			240	48						48			
				SW 1/4 of NW 1/4			40		210			210	42						42			
				SE 1/4 of NW 1/4			40		160			160	32						32			
				NE 1/4 of SW 1/4			40		250			250	50						50			
				NW 1/4 of SW 1/4			40		120			120	24						24			
				SW 1/4 of SW 1/4			40		295			295	59						59			
				SE 1/4 of SW 1/4			40		185			185	37						37			
				NE 1/4 of SE 1/4			40		250			250	50						50			
				NW 1/4 of SE 1/4			40		320			320	64						64			
				SW 1/4 of SE 1/4			40		410	450		860	172						172			
				SE 1/4 of SE 1/4			40		105			105	21						21			
							640		8315	1225		4540	460	40					940			

SOLD FOR TAXES	VALUATIONS BY SCHOOL DISTRICTS AS EQUALIZED BY DEPARTMENT OF TAXATION						Tax Including State Homestead	State Tax on Non-Homestead	SPECIAL TAXES	TOTAL TAXES	PAID	WHEN PAID	Number of Receipts	March Settlement 1957	June Settlement 1957	Penalty	November Settlement 1957	Penalty	Collections to First Monday in January 1958	Penalty	Delinquent on First Monday in January 1958	Total Delinquent Tax and Penalty	REMARKS
	District No.	District No.	District No.	District No.	District No.	District No.																	
	Rate	Rate	Rate	Rate	Rate	Rate																	
1	H 85						1802		1802		2nd Half Paid OCT 31 1957	16636											
2	H 40						848	22	870		1st Half Paid MAY 21 1957	6233		-901									
3	H 40						848	22	870		2nd Half Paid OCT 31 1957	16864		-435									
4	H 16						340		340		1st Half Paid MAY 31 1957	9164		-435									
5																							
6	H 160						3342		3342		2nd Half Paid OCT 31 1957			-3392									
7	H 48						1018		1018		1st Half Paid MAY 31 1957	9101		-1018									
8	H 42						890		890		2nd Half Paid OCT 31 1957			-890									
9	H 32						678		678		1st Half Paid MAY 31 1957			-678									
10																							
11	H 50						1060		1060		2nd Half Paid OCT 31 1957			-530									
12	H 24						508		508		1st Half Paid MAY 31 1957	9102		-254									
13	H 59						1250		1250		2nd Half Paid OCT 31 1957	16675		-625									
14	H 37						784		784		1st Half Paid MAY 31 1957			-392									
15																							
16	H 50						1060		1060		2nd Half Paid OCT 31 1957												
17	H 64						1356		1356		1st Half Paid MAY 31 1957	16111		-3254									
18	H 172						3646		3646		2nd Half Paid OCT 31 1957	8881		3254									
19	H 21						446		446		1st Half Paid MAY 31 1957												
20	H 860						19926	44	19970					12974									

Sylvia's 1st Sylvania Village of Sylvania NORTH SYLVAN CARLYON'S SYLVIA

Assessment Roll and Tax List of Real Property in the Town of Dana of Sylvan County,

Indicate Type of Property: R-Residential, C-Commercial, I-Industrial, U-Utility, F-Farm, L-Lakeshore, T-Timber, M-Mineral

Cass County, Minnesota, for Taxes for the Year 1956.

Form 80 (50) MINN. GEN. STAT. CHAP. 359.20, 359.21, 359.22

133-29 133-30

IN WHOSE NAME ASSESSED	TO WHOM TRANSFERRED	DESCRIPTION OF PROPERTY						TRUE AND FULL VALUATIONS								FINAL EQUALIZED VALUE											
		SUBDIVISION	Sec. of Lot	Town or Block	Rng.	Number of Acres of Land		LAND Exclusive of Structures and Improvements	BUILDINGS and Other Structures	MACHINERY Permanently Attached to Real Estate	RURAL			ALL OTHER			MACHINERY Permanently Attached to Real Estate	TOTAL ASSESSED VALUE	Total Assessed Value as Equalized by the Board of Review								
						1906	1956				Homestead Up to \$4,000 20%	Over \$4,000 and Non-Homestead 33 1/3%	Timber Land Class 3e 20%	Homestead Up to \$1,000 25%	Over \$1,000 and Non-Homestead 40%					33 1/3%							
N. & Paper Co		NE 1/4 of NE 1/4	9	133 30		40										321	107	107									
"		NW 1/4 of NE 1/4				40										321	107	107									
Edwin & Mae Hubin		SW 1/4 of NE 1/4				40										279	93	93									
"		SE 1/4 of NE 1/4				40		389								232	207	207									
Ralph A. & Rosa Agnes Kote		NE 1/4 of NW 1/4				40										205	41	41									
"		NW 1/4 of NW 1/4				40		350								240	118	118									
State of Minnesota		SW 1/4 of NW 1/4				40																					
Ralph A. & Rosa Agnes Kote		SE 1/4 of NW 1/4				40										125	25	25									
State of Minnesota		NE 1/4 of SW 1/4				40																					
State of Minnesota		NW 1/4 of SW 1/4				40																					
Allen Rogers		SW 1/4 of SW 1/4				40										154	52	52									
Ralph A. & Rosa Agnes Kote		SE 1/4 of SW 1/4				40										120	24	24									
State of Minnesota		NE 1/4 of SE 1/4				40																					
Ralph A. Kote		NW 1/4 of SE 1/4				40										245	47	47									
"		SW 1/4 of SE 1/4				40										280	56	56									
Edwin & Mae Hubin		SE 1/4 of SE 1/4				40										261	87	87									
							480		2758	739						3527	313	654									

SOLD FOR TAXES	VALUATIONS BY SCHOOL DISTRICTS AS EQUALIZED BY DEPARTMENT OF TAXATION						Tax Including State Homestead	State Tax on Non-Homestead	SPECIAL TAXES	TOTAL TAXES	PAID	WHEN PAID	Number of Receipts	March Settlement 1957	June Settlement 1957	Penalty 1957	November Settlement 1957	Penalty 1957	Collections to First Monday in January 1958	Penalty 1958	Delinquent on First Monday in January 1958	Total Delinquent Tax and Penalty	REMARKS		
	District No.	District No.	District No.	District No.	District No.	District No.																			
	Rate	Rate	Rate	Rate	Rate	Rate																			
	Mills	Mills	Mills	Mills	Mills	Mills																			
	1					107	58		2326	1	PAID IN FULL MAY 31 1957			- 2326											
	2					107	58		2326	2	PAID IN FULL MAY 31 1957			- 2326											
	3					93	50		2022	3	PAID IN FULL MAY 31 1957			- 2022											
	4					207	110		4498	4	PAID IN FULL MAY 31 1957			- 4498											
	6					41			868	6	2nd Half Paid OCT 31 1957	16636		- 434		434									
	7					218			2502	7	2nd Half Paid OCT 31 1957	6233		- 1251		1251									
	9					25			530	9	2nd Half Paid OCT 31 1957	6233		- 265		265									
	13					53	14		1124	13	Balance Paid OCT 28 1957	15721		- 578		578									
	14					24			508	14	2nd Half Paid OCT 31 1957	16634		- 254		254									
	17					44			1038	17	1st Half Paid MAY 21 1957	16636		- 519		519									
	18					56			1186	18	2nd Half Paid OCT 31 1957	6233		- 593		593									
	19					87			1844	19	1st Half Paid MAY 21 1957	6233		- 890											
	20									20	PAID IN FULL FEB 28 1957	5235													
							313		20446	350			1890	15065		3691									

ADD. & ALIEN'S 1ST - SYLVAN BEE VILLAGE OF SYLVAN NORTH SYLVAN CARLTON'S SYLVAN

Assessment Roll and Tax List of Real Property in the

Town of

of

Cass County, Minnesota, for Taxes for the Year 1956.

* Indicate Type of Property: R-Residential, C-Commercial, I-Industrial, U-Utility, F-Farm, L-Lakeshore, T-Timber, M-Mineral

IN WHOSE NAME ASSESSED	TO WHOM TRANSFERRED	SUBDIVISION	Sec of Lot	Town or Block	Range	Number of Acres of Land		No. School District	Indicate Homestead Yes or No	Indicate Agricultural Yes or No	Indicate Type of Property	TRUE AND FULL VALUATIONS				ASSESSED VALUATIONS				FINAL EQUALIZED VALUE				
						Acres	100ths					LAND Exclusive of Structures and Improvements	BUILDINGS and Other Structures	MACHINERY Permanently Attached to Real Estate	TOTAL True and Full Value	RURAL			ALL OTHER		MACHINERY Permanently Attached to Real Estate	TOTAL ASSESSED VALUE	Total Assessed Value as Equalized by the Board of Review	
																Homestead Up to \$4,000 20%	Over \$4,000 and Non-Homestead 33 1/3 %	Timber Land Class 3e 20%	Homestead Up to \$4,000 25%					Over \$4,000 and Non-Homestead 40%
		NE 1/4 of NE 1/4		11	133	30																		
		NW 1/4 of NE 1/4																						
<i>Sigme G. Newkirk</i>	<i>Waltham & Alice M. Allen</i>	Lot 2 less plattd SW 1/4 of NE 1/4					26.50		NO		T	1325.				44				44				
<i>Boyle Realty & Investment Co.</i>	<i>James H. Galtz</i>	Lot 1 less 9 7/8 ac plattd SE 1/4 of NE 1/4					30.05		"	"	F	240	600		840	280				280				
<i>Sigme G. Newkirk</i>	<i>Waltham & Alice M. Allen</i>	Lot 4 less plattd NE 1/4 of NW 1/4					32.25		NO	"	T	129				42				42				
	" " "	Lot 5 less plattd NW 1/4 of NW 1/4					32.25		"	"	"	129				42				42				
	" " "	Lot 3 less plattd SW 1/4 of NW 1/4					16.25		"	"	"	81				27				27				
	" " "						21.25		"	"	"	84				28				28				
<i>Sigme G. Newkirk</i>	<i>Waltham & Alice M. Allen</i>						46		"	"	F	154				53				53				
	" " "						40		"	"	"	231				77				77				
	" " "						40		"	"	"	249				83				83				
	" " "						40		"	"	"	249	120		369	123				223				
<i>Boyle Realty & Investment Co.</i>	<i>James H. Galtz</i>						46		"	"	F	360				120				120				
<i>Sigme G. Newkirk</i>	<i>Waltham & Alice M. Allen</i>						40		"	"	"	339				113				113				
	" " "						40		"	"	"	324				108				108				
<i>Boyle Realty & Investment Co.</i>	<i>James H. Galtz</i>						40		"	"	"	360				120				120				
<i>Walter H. Anderson</i>	<i>His Wife</i>	Lot 6																						
							478.35					3066	120		3286	1262				1262				

SOLD FOR TAXES	VALUATIONS BY SCHOOL DISTRICTS AS EQUALIZED BY DEPARTMENT OF TAXATION						Tax Including State Homestead	State Tax on Non-Homestead	SPECIAL TAXES	TOTAL TAXES	PAID	WHEN PAID	Number of Receipt	March Settlement 1957	June Settlement 1957	Penalty	November Settlement 1957	Penalty	Collections to First Monday in January 1958	Penalty	Delinquent on First Monday in January 1958	Total Delinquent Tax and Penalty	REMARKS	
	District No.	District No.	District No.	District No.	District No.	District No.																		
	Rate	Rate	Rate	Rate	Rate	Rate																		
	Mills	Mills	Mills	Mills	Mills	Mills																		
		44				9.32	24		9.56		PAID IN FULL	MAY 31 1957	918		-9.56									
		280				593.4	1.50		608.4		2nd Half Paid	OCT 31 1957	1592		-30.42									
											1st Half Paid	MAY 31 1957	9105											
						9.12	22		9.34		PAID IN FULL	MAY 31 1957			-9.34									
						9.12	22		9.34		PAID IN FULL	MAY 31 1957			-9.34									
						5.72	14		5.86		PAID IN FULL	MAY 31 1957	9188		-5.86									
						5.44	14		6.08		PAID IN FULL	MAY 31 1957			-6.08									
						11.24	28		11.52		PAID IN FULL	MAY 31 1957			-11.52									
						16.32	42		16.74		PAID IN FULL	MAY 31 1957			-16.74									
						17.60	44		18.04		PAID IN FULL	MAY 31 1957			-18.04									
						26.06	66		26.72		PAID IN FULL	MAY 31 1957			-26.72									
						25.44	64		26.08		2nd Half Paid	OCT 31 1957	1592		-13.04									
						23.96	60		24.56		1st Half Paid	MAY 31 1957	9105		-13.04									
						22.80	58		23.48		PAID IN FULL	MAY 31 1957	9188		-23.48									
						25.44	64		26.08		PAID IN FULL	MAY 31 1957	9188		-23.48									
						25.44	64		26.08		2nd Half Paid	OCT 31 1957	1592		-13.04									
						25.44	64		26.08		1st Half Paid	MAY 31 1957	9105		-13.04									
						26.72	62		27.24						-27.24									

133-29
133-30

133-29
133-30
NORTH SYLVAN
SYLVAN SHS
VILLAGE OF SYLVAN
NORTH SYLVAN
FAIRBORN'S SYLVAN

Assessment Roll and Tax List of Real Property in the Town of Spoon of Dodge County

* Indicate Type of Property: R-Residential, C-Commercial, I-Industrial, U-Utility, F-Farm, L-Lakeshore, T-Timber, M-Mineral

Cass County, Minnesota, for Taxes for the Year 1956.

132-29

133-30

IN WHOSE NAME ASSESSED	TO WHOM TRANSFERRED	DESCRIPTION OF PROPERTY	TRUE AND FULL VALUATIONS											ASSESSED VALUATIONS											SOLD FOR TAXES	VALUATIONS BY SCHOOL DISTRICTS AS EQUALIZED BY DEPARTMENT OF TAXATION						Taxes Including State Homestead	State Tax on Non-Homestead	SPECIAL TAXES	TOTAL TAXES	PAID	WHEN PAID	Number of Receipt	March Settlement 1957	June Settlement 1957	Penalty	November Settlement 1957	Penalty	Collections to First Monday in January 1958	Penalty	Delinquent on First Monday in January 1958	Total Delinquent Tax and Penalty	REMARKS
			LAND Exclusion of Structures and Improvements	BUILDINGS and Other Structures	MACHINERY Permanently Attached to Real Estate	TOTAL True and Full Value	RURAL			ALL OTHER			MACHINERY Permanently Attached to Real Estate	TOTAL ASSESSED VALUE	Total Assessed Value as Equalized by the Board of Review	FINAL EQUALIZED VALUE	District No.	District Rate	District No.	District Rate	District No.	District Rate	District No.	District Rate																								
							Homestead Up to \$4,000 20%	Over \$4,000 and Non-Homestead 33 1/3%	Timber Land Class 3e 20%	Homestead Up to \$4,000 25%	Over \$4,000 and Non-Homestead 40%																																					
												Dollars														Dollars	Dollars	Dollars	Dollars	Dollars																		
Shadows Jr & Betty L. Holden		NE 1/4 of NE 1/4	300			300						200			100											100			2220	54		2174	1	2nd Half Paid OCT 31 1957														
"	"	NW 1/4 of NE 1/4	228			228						76			76											76			1610	40		1650	2	1st Half Paid MAY 31 1957														
"	"	SW 1/4 of NE 1/4	329			329						93			93											93			1772	50		2022	3	1st Half Paid MAY 31 1957														
"	"	SE 1/4 of NE 1/4	240			240						10			80											80			1646	42		1738	4	1st Half Paid MAY 31 1957														
Poste Realty Investment Co.		NE 1/4 of NW 1/4	102			102						34			34											34			720	18		738	6	2nd Half Paid OCT 31 1957														
"	"	NW 1/4 of NW 1/4	168			168						56			56											56			1186	30		1216	7	1st Half Paid MAY 31 1957														
Poste Realty Investment Co.		SW 1/4 of NW 1/4	120			120						40			40											40			848	22		870	9	2nd Half Paid OCT 31 1957														
"	"	NE 1/4 of SW 1/4	120			120						40			40											40			848	22		870	11	1st Half Paid MAY 31 1957														
"	"	NW 1/4 of SW 1/4	219			219						73			73											73			1548	38		1586	12	2nd Half Paid OCT 31 1957														
"	"	SW 1/4 of SW 1/4	240			240						80			80											80			1696	42		1738	13	1st Half Paid MAY 31 1957														
"	"	SE 1/4 of SW 1/4	180			180						60			60											60			1272	32		1304	14	1st Half Paid MAY 31 1957														
Henry E. Schalo & Mitter Indrud		NE 1/4 of SE 1/4	120			120						24			24											24			508			508	16	2nd Half Paid OCT 31 1957														
"	"	NW 1/4 of SE 1/4	145			145						37			39											39			826			826	17	1st Half Paid MAY 31 1957														
"	"	SW 1/4 of SE 1/4	180			180						36			36											36			764			764	18	1st Half Paid MAY 31 1957														
"	"	SE 1/4 of SE 1/4	160			160						32			32											32			678			678	19	1st Half Paid MAY 31 1957														
					585 30										863												131			18242	390		18632															

1st SYLVAN SH. VILLAGE OF SYLVAN, NORTH SYLVAN CANTON'S S.V.

Assessment Roll and Tax List of Real Property in the Town of Sylvan

* Indicate Type of Property: R-Residential, C-Commercial, I-Industrial, U-Utility, F-Farm, L-Lakeshore, T-Timber, M-Mineral

IN WHOSE NAME ASSESSED	TO WHOM TRANSFERRED	DESCRIPTION OF PROPERTY				TRUE AND FULL VALUATIONS				ASSESSED VALUATIONS							FINAL EQUALIZED VALUE
		SUBDIVISION	Sec. or Lot	Town or Block	No. of Acres of Land	LAND Exclusive of Structures and Improvements	BUILDINGS and Other Structures	MACHINERY Permanently Attached to Real Estate	TOTAL True and Full Value	RURAL		ALL OTHER		MACHINERY Permanently Attached to Real Estate	TOTAL ASSESSED VALUE	Total Assessed Value as Equalized by the Board of Review	
										Homestead Up to \$4,000 20%	Over \$4,000 and Non-Homestead 33 1/3%	Timber Land Class 3a 20%	Homestead Up to \$4,000 25%				
Mrs. & Francis B. Ondris		all of NE 1/4 N. of Rwy	13	133	30	88			860	120				1120			
		NW 1/4 of NE 1/4															
		SW 1/4 of NE 1/4															
Mrs. Annie B. Silver		all of NE 1/4 S. of Rwy			520			420	420	140				140			
George M. & Bernice T. Wilder		1/2 of Sylvan Prop 74 wide on N. & 1/2			62			10	10					10			
Mrs. & Francis B. Ondris		NE 1/4 of NW 1/4			40			120	1600					324			
		NW 1/4 of NW 1/4			40			240						48			
		SW 1/4 of NW 1/4			522			35						7			
Mrs. Annie B. Silver		SE 1/4 of NW 1/4			25			249		83				83			
State of Minnesota		SW 1/4 of NW 1/4						300		100				100			
Mrs. Annie B. Silver		NE 1/4 of SW 1/4			40			399		133				133			
George M. & Bernice T. Wilder		NW 1/4 of SW 1/4			9150			365		72				72			
Mrs. Annie B. Silver		SE 1/4 of SW 1/4			40			279		93				93			
Mrs. Annie B. Silver		NE 1/4 of SE 1/4			40			399		133				133			
		NW 1/4 of SE 1/4			40			399		133				133			
		SW 1/4 of SE 1/4			40			279		93				93			
		SE 1/4 of SE 1/4			40			399		133				133			
					582			4652	1500	126				474			
								4057		809				1435			

Cass County, Minnesota, for Taxes for the Year 1956.

SOLD FOR TAXES	VALUATIONS BY SCHOOL DISTRICTS AS EQUALIZED BY DEPARTMENT OF TAXATION						Tax Including State Homestead	State Tax on Non-Homestead	SPECIAL TAXES	TOTAL TAXES	PAID	WHEN PAID	Number of Receipts	March Settlement 1957	June Settlement 1957	Penalty	November Settlement 1957	Penalty	Collections to First Monday in January 1958	Penalty	Delinquent on First Monday in January 1958	Total Delinquent Tax and Penalty	REMARKS	
	District No.	District No.	District No.	District No.	District No.	District No.																		
	Rate	Rate	Rate	Rate	Rate	Rate																		
1	172						3646		3646		2nd Half Paid OCT 3 1957	1609												
2											1st Half Paid MAY 31 1957	9158												
3																								
4	140						2968	74	3042		PAID IN FULL MAY 1 8 1957	6498												
5	2						42		42		PAID IN FULL MAY 2 7 1957	6267												
6	324						6868		6868		2nd Half Paid OCT 3 1957	16109												
7	48						2018		1048		1st Half Paid OCT 3 1957	9158												
8	7						148		148		2nd Half Paid OCT 3 1957													
9	83						1760	44	2804		1st Half Paid MAY 31 1957	6498												
10											PAID IN FULL MAY 1 8 1957	6498												
11	100						2120	54	2174		PAID IN FULL MAY 1 8 1957	6498												
12	73						1548		1548		PAID IN FULL MAY 2 1 1957	6267												
13																								
14	93						1992	50	2022		PAID IN FULL MAY 1 8 1957	6498												
15																								
16	100						2120	54	2174		PAID IN FULL MAY 1 8 1957													
17	100						2120	54	2174		PAID IN FULL MAY 1 8 1957	6498												
18	93						1992	50	2022		PAID IN FULL MAY 1 8 1957													
19	100						2120	54	2174		PAID IN FULL MAY 1 8 1957													
20	626						30422	434	30866															

132-29 133-30 NORTH SYLVAN CARLTON'S SV

Assessment Roll and Tax List of Real Property in the Town of Sylvan, Cass County, Minnesota

Indicate Type of Property: R-Residential, C-Commercial, I-Industrial, U-Utility, F-Farm, L-Lakeshore, T-Timber, M-Mineral

Cass County, Minnesota, for Taxes for the Year 1956.

Table with columns: IN WHOSE NAME ASSESSED, TO WHOM TRANSFERRED, DESCRIPTION OF PROPERTY, TRUE AND FULL VALUATIONS, ASSESSED VALUATIONS, VALUATIONS BY SCHOOL DISTRICTS AS EQUALIZED BY DEPARTMENT OF TAXATION, Tax including State Homestead, State Tax on Non-Homestead, SPECIAL TAXES, TOTAL TAXES, PAID, WHEN PAID, Number of Receipt, March Settlement 1957, June Settlement 1957, Penalty, November Settlement 1957, Collections to First Monday in January 1958, Delinquent on First Monday in January 1958, Total Delinquent Tax and Penalty, REMARKS.

133-29 133-30

1st SYLVAN BE... SYLVAN STA... VILLAGE OF SYLVAN... NORTH SYLVAN... CARLTON'S ST...

Assessment Roll and Tax List of Real Property in the Town of Sylva

* Indicate Type of Property: R-Residential, C-Commercial, I-Industrial, U-Utility, F-Farm, L-Lakeshore, T-Timber, M-Mineral

Table with columns: IN WHOSE NAME ASSESSED, TO WHOM TRANSFERRED, DESCRIPTION OF PROPERTY, TRUE AND FULL VALUATIONS (RURAL, ALL OTHER, MACHINERY, TOTAL ASSESSED VALUE), and FINAL EQUALIZED VALUE.

Cass County, Minnesota, for Taxes for the Year 1956.

Table with columns: VALUATIONS BY SCHOOL DISTRICTS AS EQUALIZED BY DEPARTMENT OF TAXATION, TAX INCLUDING STATE HOMESTEAD, SPECIAL TAXES, TOTAL TAXES, PAID, WHEN PAID, Number of Receipt, March Settlement 1957, June Settlement 1957, November Settlement 1957, Collections to First Monday in January 1958, Delinquent on First Monday in January 1958, Total Delinquent Tax and Penalty, REMARKS.

133-29 132-29 133-30

VILLAGE OF SYLVAN MINN. NORTH SYLVAN CARLSON'S SY

Assessment Roll and Tax List of Real Property in the Town of Sylvan

Indicate Type of Property: R-Residential, C-Commercial, I-Industrial, U-Utility, F-Farm, L-Lakeshore, T-Timber, M-Mineral

Cass County, Minnesota, for Taxes for the Year 1956.

Table with columns: IN WHOSE NAME ASSESSED, TO WHOM TRANSFERRED, DESCRIPTION OF PROPERTY, TRUE AND FULL VALUATIONS (RURAL, ALL OTHER, MACHINERY, TOTAL ASSESSED VALUE), VALUATIONS BY SCHOOL DISTRICTS AS EQUALIZED BY DEPARTMENT OF TAXATION, TAXES (SOLD FOR TAXES, District, State Tax on Non-Homestead, SPECIAL TAXES, TOTAL TAXES), PAID, WHEN PAID, Number of Receipt, March Settlement 1957, June Settlement 1957, November Settlement 1957, Collections to First Monday in January 1958, Delinquent on First Monday in January 1958, Total Delinquent Tax and Penalty, REMARKS.

133-29 133-30

133-29 133-30

Assessment Roll and Tax List of Real Property in the County of Polk

Cass County, Minnesota, for Taxes for the Year 1956.

Indicate Type of Property: R-Residential, C-Commercial, I-Industrial, U-Utility, F-Farm, L-Lakeshore, T-Timber, M-Mineral

IN WHOSE NAME ASSESSED	TO WHOM TRANSFERRED	SUBDIVISION	Sec. of Lot	Town or Block	Reg.	Number of Acres of Land	No. School District	Indicate Homestead Tax No.	Indicate Agricultural Tax No.	Indicate Type of Property	TRUE AND FULL VALUATIONS						Total Assessed Value as Realized by the Board of Review	FINAL EQUALIZED VALUE	SOLD FOR TAXES	VALUATIONS BY SCHOOL DISTRICTS AS EQUALIZED BY DEPARTMENT OF TAXATION						Tax Including State Homestead	State Tax on Non-Homestead	SPECIAL TAXES	TOTAL TAXES	PAID	WHEN PAID	Number of Receipts	March Settlement 1957	June Settlement 1957	Penalty	November Settlement 1957	Penalty	Collections to First Monday in January 1958	Penalty	Delinquent on First Monday in January 1958	Total Delinquent Tax and Penalty	REMARKS							
											LAND Exclusive of Structures and Improvements	BUILDINGS and Other Structures	MACHINERY Permanently Attached to Real Estate	TOTAL True and Full Value	RURAL					ALL OTHER			Machinery Permanently Attached to Real Estate	TOTAL ASSESSED VALUE	District No.																		Rate	District No.	Rate	District No.	Rate	District No.	Rate
															Homestead Up to \$4,000 20%	Over \$1,000 and Non-Homestead 33 1/3%				Timber Land Class 3e 20%	Homestead Up to \$4,000 25%	Over \$4,000 and Non-Homestead 40%																											
St. Olaf College		NE 1/4 of NE 1/4 Section 19, T133, R30				38			No	F	210					70	1						1484	38		1522	1	PAID IN FULL	MAY 21 1957	6252		-1522																	
Joe J. & Zella M. Shutt		NW 1/4 of NE 1/4 " " " "				2742			Yes	"	165		320		485	97	2						2056			2056	2	PAID IN FULL	MAY 17 1957	6465		-2056																	
St. Olaf College		SW 1/4 of NE 1/4 " " " "				40			No	"	240				240	80	3						1676	42		1738	3	PAID IN FULL	MAY 21 1957	6252		-1738																	
" "		SE 1/4 of NE 1/4 " " " "				40			"	"	399				399	133	4						2818	70		2888	4	PAID IN FULL	MAY 21 1957	6252		-2888																	
Minnesota Power & Light Co.		1.9 ac of NW 1/4 of NW 1/4 Lot 1				190			No	T	15			5	15	5	5						118	02		220	5					60																	
Joe J. & Zella M. Shutt		NE 1/4 of NW 1/4 " " " "				2557			Yes	F	155			31	155	31	6						658			658	6	PAID IN FULL	MAY 17 1957	6465		-658																	
" "		NW 1/4 of NW 1/4 " " " "				3914			"	"	405			81	405	81	7						1716			1716	7	PAID IN FULL	MAY 17 1957	6465		-1716																	
St. Olaf College		SW 1/4 of NW 1/4 " " " "				4445			No	"	309			103	309	103	8						2184	56		2240	8	PAID IN FULL	MAY 21 1957	6252		-2240																	
" "		SE 1/4 of NW 1/4 " " " "				40			"	"	279			93	279	93	9						1472	50		2022	9	PAID IN FULL	MAY 21 1957	6252		-2022																	
Minnesota Power & Light Co.		1.3700 ac of NW 1/4 of NW 1/4				1370			No	T	153			51	153	51	10						1208	28		1236	10					618																	
St. Olaf College		NE 1/4 of SW 1/4 " " " "				2225			No	F	171			57	171	57	11						1208	30		1238	11	PAID IN FULL	MAY 21 1957	6252		-1238																	
" "		NW 1/4 of SW 1/4 Lot 3				5090			"	"	459			153	459	153	12						3242	82		3324	12	PAID IN FULL	MAY 21 1957	6252		-3324																	
" "		SW 1/4 of SW 1/4 Lot 4				5279			"	"	405			135	405	135	13						2862	72		2934	13	PAID IN FULL	MAY 21 1957	6252		-2934																	
" "		SE 1/4 of SW 1/4 Lot 5				865			"	"	75			25	75	25	14						530	14		544	14	PAID IN FULL	MAY 21 1957	6252		-544																	
Minnesota Power & Light Co.		4.05 ac of NW 1/4 of NW 1/4				405			No	T	42			14	42	14	15						332	08		340	15					170																	
St. Olaf College		NE 1/4 of SE 1/4 Lot 7				3250			No	F	321			107	321	107	16						2268	58		2326	16	PAID IN FULL	MAY 21 1957	6252		-2326																	
" "		NW 1/4 of SE 1/4 Lot 6				3270			"	"	264			88	264	88	17						1866	46		1912	17	PAID IN FULL	MAY 21 1957	6252		-1912																	
" "		SW 1/4 of SE 1/4 " " " "															18																																
" "		SE 1/4 of SE 1/4 " " " "															19																																
Anders B. Anderson		18 ac of NW 1/4 of NW 1/4 of Lot 5				18			No	R	216		645	287	861	287	20						6800	1254		6954	20	PAID IN FULL	MAY 21 1957	6252		-6954																	
						32507					2493		945	5248	209	1610							209			26560					34920			848															

133-29
133-30
VILLAGE OF SYLVAN
NORTH SYLVAN
CANTON'S SY

Assessment Roll and Tax List of Real Property in the Town of Sylvia of Sylvania Indicate Type of Property: R-Residential, C-Commercial, I-Industrial, U-Utility, F-Farm, L-Lakeshore, T-Timber, M-Mineral

Cass County, Minnesota, for Taxes for the Year 1956.

Table with columns: IN WHOSE NAME ASSESSED, TO WHOM TRANSFERRED, DESCRIPTION OF PROPERTY, TRUE AND FULL VALUATIONS, ASSESSED VALUATIONS, and FINAL EQUALIZED VALUE. Includes handwritten entries for Minnesota Power & Light Co. and St. Olaf College.

Table with columns: VALUATIONS BY SCHOOL DISTRICTS AS EQUALIZED BY DEPARTMENT OF TAXATION, Tax including State Homestead, State Tax on Non-Homestead, SPECIAL TAXES, TOTAL TAXES, PAID, WHEN PAID, Number of Receipt, March Settlement 1957, June Settlement 1957, November Settlement 1957, Penalty, Collections to First Monday in January 1958, Delinquent on First Monday in January 1958, Total Delinquent Tax and Penalty, REMARKS.

132-29

133-30

1st SYLVAN STA. VILLAGE OF SYLVAN NORTH SYLVAN CARLYON'S STA.

Assessment Roll and Tax List of Real Property in the _____ of _____

Indicate Type of Property: R-Residential, C-Commercial, I-Industrial, U-Utility, F-Farm, L-Lake shore, T-Timber, M-Mineral

IN WHOSE NAME ASSESSED	TO WHOM TRANSFERRED	DESCRIPTION OF PROPERTY				TRUE AND FULL VALUATIONS										FINAL EQUALIZED VALUE		
		SUBDIVISION	Sec. or Lot	Town or Block	Number of Acres of Land	LAND Exclusive of Structures and Improvements	BUILDINGS and Other Structures	MACHINERY Permanently Attached to Real Estate	TOTAL True and Full Value	RURAL			ALL OTHER				TOTAL ASSESSED VALUE	Total Assessed Value as Equalized by the Board of Review
										Homestead Up to \$4,000 20%	Over \$4,000 and Non-Homestead 33 1/3%	Timber Land Class 3e 20%	Homestead Up to \$4,000 25%	Over \$4,000 and Non-Homestead 40%	MACHINERY Permanently Attached to Real Estate 33 1/3%			
					Acres	Dollars	Dollars	Dollars	Dollars	Dollars	Dollars	Dollars	Dollars	Dollars	Dollars	Dollars		
1		NE 1/4 of NE 1/4																
2		NW 1/4 of NE 1/4																
3		SW 1/4 of NE 1/4																
4		SE 1/4 of NE 1/4																
5																		
6		NE 1/4 of NW 1/4																
7		NW 1/4 of NW 1/4																
8		SW 1/4 of NW 1/4																
9		SE 1/4 of NW 1/4																
10																		
11		NE 1/4 of SW 1/4																
12		NW 1/4 of SW 1/4																
13		SW 1/4 of SW 1/4																
14		SE 1/4 of SW 1/4																
15																		
16		NE 1/4 of SE 1/4																
17		NW 1/4 of SE 1/4																
18		SW 1/4 of SE 1/4																
19		SE 1/4 of SE 1/4																
20																		

Cass County, Minnesota, for Taxes for the Year 1956.

SOLD FOR TAXES	VALUATIONS BY SCHOOL DISTRICTS AS EQUALIZED BY DEPARTMENT OF TAXATION						Tax Including State Homestead	State Tax on Non-Homestead	SPECIAL TAXES	TOTAL TAXES	PAID	WHEN PAID	Number of Receipt	March Settlement 1957	June Settlement 1957	Penalty	November Settlement 1957	Penalty	Collections to First Monday in January 1958	Penalty	Delinquent on First Monday in January 1958	Total Delinquent Tax and Penalty	REMARKS
	District No.	District No.	District No.	District No.	District No.	District No.																	
	Rate	Rate	Rate	Rate	Rate	Rate																	
	Dollars	Dollars	Dollars	Dollars	Dollars	Dollars	\$ cts.	\$ cts.	\$ cts.	\$ cts.	Month Day Year		\$ cts.	\$ cts.	\$ cts.	\$ cts.	\$ cts.	\$ cts.	\$ cts.	\$ cts.	\$ cts.	\$ cts.	
1																							
2																							
3																							
4																							
5																							
6																							
7																							
8																							
9																							
10																							
11																							
12																							
13																							
14																							
15																							
16																							
17																							
18																							
19																							
20																							

133-29 133-30 North 5th Street, Sylvan, Wis. Village of Sylvan, North Sylvan, Carlton's

Assessment Roll and Tax List of Real Property in the _____ of _____,
* Indicate Type of Property: R-Residential, C-Commercial, I-Industrial, U-Utility, F-Farm, L-Lakeshore, T-Timber, M-Mineral

Table with columns: IN WHOSE NAME ASSESSED, TO WHOM TRANSFERRED, DESCRIPTION OF PROPERTY, TRUE AND FULL VALUATIONS, ASSESSED VALUATIONS, and FINAL EQUALIZED VALUE. Includes sub-sections for Rural and All Other valuations.

Cass County, Minnesota, for Taxes for the Year 1956.

Table with columns: SOLD FOR TAXES, VALUATIONS BY SCHOOL DISTRICTS AS EQUALIZED BY DEPARTMENT OF TAXATION, PAID, WHEN PAID, Number of Receipt, March Settlement 1957, June Settlement 1957, November Settlement 1957, Penalty, Collections to First Monday in January 1958, Delinquent on First Monday in January 1958, Total Delinquent Tax and Penalty, REMARKS.

132-29

133-30

132-29 133-30 134-31 135-32 136-33 137-34 138-35 139-36 140-37 141-38 142-39 143-40 144-41 145-42 146-43 147-44 148-45 149-46 150-47 151-48 152-49 153-50 154-51 155-52 156-53 157-54 158-55 159-56 160-57 161-58 162-59 163-60 164-61 165-62 166-63 167-64 168-65 169-66 170-67 171-68 172-69 173-70 174-71 175-72 176-73 177-74 178-75 179-76 180-77 181-78 182-79 183-80 184-81 185-82 186-83 187-84 188-85 189-86 190-87 191-88 192-89 193-90 194-91 195-92 196-93 197-94 198-95 199-96 200-97 201-98 202-99 203-100

Assessment Roll and Tax List of Real Property in the Town of Sylvan, Cass County, Minnesota, for Taxes for the Year 1956.

* Indicate Type of Property: R-Residential, C-Commercial, I-Industrial, U-Utility, F-Farm, L-Lakeshore, T-Timber, M-Mineral

Form 50 (56)

IN WHOSE NAME ASSESSED	TO WHOM TRANSFERRED	DESCRIPTION OF PROPERTY				TRUE AND FULL VALUATIONS							ASSESSED VALUATIONS							SOLD FOR TAXES	VALUATIONS BY SCHOOL DISTRICTS AS EQUALIZED BY DEPARTMENT OF TAXATION										PAID	WHEN PAID	Number of Receipt	March Settlement 1957	June Settlement 1957	Penalty	November Settlement 1957	Penalty	Collections to First Monday in January 1958	Penalty	Delinquent on First Monday in January 1958	Total Delinquent Tax and Penalty	REMARKS														
		SUBDIVISION	Sec. or Lot	Town or Block	Rm.	Number of Acres of Land	LAND Exclusive of Structures and Improvements	BUILDINGS and Other Structures	MACHINERY Permanently Attached to Real Estate	TOTAL True and Full Value	RURAL			ALL OTHER			MACHINERY Permanently Attached to Real Estate	TOTAL ASSESSED VALUE	Total Assessed Value as Equalized by the Board of Review		FINAL EQUALIZED VALUE	District No.	District No.	District No.	District No.	District No.	District No.	Tax Including State Homestead	State Tax on Non-Homestead	SPECIAL TAXES														TOTAL TAXES	PAID	WHEN PAID	Number of Receipt	March Settlement 1957	June Settlement 1957	Penalty	November Settlement 1957	Penalty	Collections to First Monday in January 1958	Penalty	Delinquent on First Monday in January 1958	Total Delinquent Tax and Penalty	REMARKS
											Rate	Rate	Rate	Rate	Rate	Rate						Rate	Rate	Rate	Rate	Rate	Rate																														
<i>Chas. H. Johnson</i>		<i>Village of Sylvan</i>																																																							
<i>" "</i>		<i>" "</i>																																																							
<i>George M. & Bernice V. Winter</i>		<i>" "</i>																																																							
<i>" "</i>		<i>" "</i>																																																							
<i>Jack F. & Ellen J. Marlow</i>		<i>" "</i>																																																							
<i>" "</i>		<i>" "</i>																																																							
<i>" "</i>		<i>" "</i>																																																							
<i>" "</i>		<i>" "</i>																																																							
<i>" "</i>		<i>" "</i>																																																							
<i>" "</i>		<i>" "</i>																																																							
<i>" "</i>		<i>" "</i>																																																							
<i>" "</i>		<i>" "</i>																																																							
<i>" "</i>		<i>" "</i>																																																							
<i>" "</i>		<i>" "</i>																																																							

133-29 133-30

VILLAGE OF SYLVAN

Land & A... Sylvan Bell... NORTH SYLVAN FARMYON'S SYLVAN

Assessment Roll and Tax List of Real Property in the Town of Sylvan

Indicate Type of Property: R-Residential, C-Commercial, I-Industrial, U-Utility, F-Farm, L-Lakeshore, T-Timber, M-Mineral

Cass County, Minnesota, for Taxes for the Year 1956.

Table with columns: IN WHOSE NAME ASSESSED, TO WHOM TRANSFERRED, DESCRIPTION OF PROPERTY, TRUE AND FULL VALUATIONS, ASSESSED VALUATIONS, VALUATIONS BY SCHOOL DISTRICTS AS EQUALIZED BY DEPARTMENT OF TAXATION, TAX INCLUDING STATE HOMESTEAD, STATE TAX ON NON-HOMESTEAD, SPECIAL TAXES, TOTAL TAXES, PAID, WHEN PAID, Number of Receipt, March Settlement 1957, June Settlement 1957, Penalty, November Settlement 1957, Penalty, Collections to First Monday in January 1958, Penalty, Delinquent on First Monday in January 1958, Total Delinquent Tax and Penalty, REMARKS.

132-29, 133-30, VILLAGE OF SYLVAN

132-29, 133-30, VILLAGE OF SYLVAN, NORTH SYLVAN, CARLYON'S SYLVAN

Assessment Roll and Tax List of Real Property in the Town of *Sylvan* of *Illwaco* County, Oregon

* Indicate Type of Property: R-Residential, C-Commercial, I-Industrial, U-Utility, F-Farm, L-Lakefront, T-Timber, M-Mineral

Form 30 (56) (1-5-56) (REVISED) (1-5-56)

Table with columns: IN WHOSE NAME ASSESSED, TO WHOM TRANSFERRED, DESCRIPTION OF PROPERTY, TRUE AND FULL VALUATIONS, ASSESSED VALUATIONS, FINAL EQUALIZED VALUE. Includes handwritten entries for 'North Sylvan' and 'Part of Sta of T1/4 Sec. 13-14-30'.

Cass County, Minnesota, for Taxes for the Year 1956.

Table with columns: VALUATIONS BY SCHOOL DISTRICTS AS EQUALIZED BY DEPARTMENT OF TAXATION, Tax Including State Homestead, State Tax on Non-Homestead, SPECIAL TAXES, TOTAL TAXES, PAID, WHEN PAID, Number of Receipts, March Settlement 1957, June Settlement 1957, November Settlement 1957, Collections to First Monday in January 1958, Delinquent on First Monday in January 1958, Total Delinquent Tax and Penalty, REMARKS. Includes handwritten entries for 'Sylvan' and 'Shady Shore'.

132-29

133-30

NORTH SYLVAN VILLAGE OF SYLVAN

Land & Allen's 1st Add'n to Sylvan Bldg SYLVAN SHADY SHORE Land & Allen's 2nd Add'n to Sylvan Bldg SYLVAN CARLSON'S SYLVAN

Assessment Roll and Tax List of Real Property in the Town of Sylvan

Indicate Type of Property: R-Residential, C-Commercial, I-Industrial, U-Utility, F-Farm, L-Lakeshore, T-Timber, M-Mineral

Cass County, Minnesota, for Taxes for the Year 1956.

Form 5C (156) 1-1-56

IN WHOSE NAME ASSESSED	TO WHOM TRANSFERRED	DESCRIPTION OF PROPERTY				TRUE AND FULL VALUATIONS										FINAL EQUALIZED VALUE			
		Subdivision	Sec. or Lot	Town or Rng.	Number of Acres of Land	LAND EXCLUSIVE OF STRUCTURES AND IMPROVEMENTS	BUILDINGS AND OTHER STRUCTURES	MACHINERY PERMANENTLY ATTACHED TO REAL ESTATE	TOTAL True and Full Value	RURAL			ALL OTHER				MACHINERY Permanently Attached to Real Estate	TOTAL ASSESSED VALUE	Total Assessed Value as Equalized by the Board of Review
										Homestead Up to \$1,000 20%	Over \$1,000 and Non-Homestead 33 1/3%	Timber Land Class 3c 20%	Homestead Up to \$4,000 25%	Over \$4,000 and Non-Homestead 40%	33 1/3%				
Frieda A. Carlson		Carlson Subdiv	1		1.33 29				30				10				10		
"			2						30				10				10		
"			3						30				10				10		
"			4						21				7				7		
Anna M. Gay			4						24				8				8		
Jane Gray Thieland			5						24				8				8		
Irene M. Harrison			5						24				8				8		
Robert A. & Alene F. Rodenwald			6						30				10				10		
Raymond H. Rodenwald			6					50	250			100					100		
Malcolm G. & Thue Audrey Anderson			7					50	250			100					100		
John A. Peterson			7					29	325			118					118		
John F. & Doris M. Jagger			7					30	150			60					60		
"			8					30				10					10		
Frieda A. Carlson			8					60				20					20		
"			9					30				10					10		
Mary L. Schmidt			9					60				20					20		
Margaret L. Carlson			10					45				15					15		
Jeane F. Carlson			10					75				15					15		
Robert F. Sweet			11					50	175			75					75		
Irene H. Harrison			11					74	250			108					108		
								1166	1400			122					122		

SOLD FOR TAXES	VALUATIONS BY SCHOOL DISTRICTS AS EQUALIZED BY DEPARTMENT OF TAXATION					Tax including State Homestead	State Tax on Non-Homestead	SPECIAL TAXES	TOTAL TAXES	PAID	WHEN PAID	Number of Receipt	March Settlement 1957	June Settlement 1957	Penalty	November Settlement 1957	Penalty	Collections to First Monday in January 1958	Penalty	Delinquent on First Monday in January 1958	Total Delinquent Tax and Penalty	REMARKS
	District No.	District No.	District No.	District No.	District No.																	
	Rate	Rate	Rate	Rate	Rate																	
	10					236	06		242	1 PAID IN FULL	MAY 31 1957											
	10					236	06		242	2 PAID IN FULL	MAY 31 1957	9108										
	10					236	06		242	3 PAID IN FULL	MAY 31 1957											
	7					166	04		170	4 PAID IN FULL	MAY 31 1957											
	8					190	04		194	5 PAID IN FULL	MAY 17 1957	6487										
	8					190	04		194	6 PAID IN FULL	MAY 18 1957	6504										
	8					190	04		194	7 PAID IN FULL	MAY 31 1957	9109										
	10					236	06		242	8 PAID IN FULL	MAY 17 1957	6455										
	10.0					2370	54		2424	9 PAID IN FULL	MAY 17 1957	6454										
	10.0					2370	54		2424	10 PAID IN FULL	MAY 31 1957	9110										
	48					3796	62		2858	11 PAID IN FULL	MAY 21 1957	6265										
	60					1422	32		1454	12 PAID IN FULL	MAY 23 1957											
	10					236	06		242	13 PAID IN FULL	MAY 23 1957	6248										
	20					404	10		484	14 PAID IN FULL	MAY 31 1957											
	10					236	06		242	15 PAID IN FULL	MAY 31 1957	9108										
	20					474	10		484	16 PAID IN FULL	MAY 31 1957											
	15					356	08		364	17 PAID IN FULL	MAY 18 1957	6507										
	15					356	08		364	18 PAID IN FULL	MAY 31 1957	9108										
	75					1778	40		1818	19 PAID IN FULL	FEB 7 1957	1960	2888									
	108					2560	58		2618	20 PAID IN FULL	FEB 28 1957	5234	2618									
	122					17108	388		17496					13060								

132-29

133-30

NORTH SYLVAN VILLAGE OF SYLVAN

SYLVAN'S SYLVAN PARK

ADD'n to SYLVAN BEAR SYLVAN SHADY SHORE

ADD'n to SYLVAN BEAR ADD'n SYLVAN BEAR

Assessment Roll and Tax List of Real Property in the Town of Sylvan

Cass County, Minnesota, for Taxes for the Year 1956.

Form 5C (50) MLLS-DATA COMPANY, MINNEAPOLIS. * Indicate Type of Property: R-Residential, C-Commercial, I-Industrial, U-Utility, F-Farm, L-Lakeshore, T-Timber, M-Mineral

Table with columns: IN WHOSE NAME ASSESSED, TO WHOM TRANSFERRED, SUBDIVISION, TRUE AND FULL VALUATIONS (LAND, BUILDINGS, MACHINERY, TOTAL), ASSESSED VALUATIONS (RURAL, ALL OTHER, MACHINERY, TOTAL ASSESSED), FINAL EQUALIZED VALUE.

Table with columns: VALUATIONS BY SCHOOL DISTRICTS AS EQUALIZED BY DEPARTMENT OF TAXATION, Tax including State Homestead, State Tax on Non-Homestead, SPECIAL TAXES, TOTAL TAXES, PAID, WHEN PAID, Number of Receipt, March Settlement, June Settlement, November Settlement, Collections to First Monday in January 1956, Delinquent on First Monday in January 1956, Total Delinquent Tax and Penalty, REMARKS.

132-29, 133-30, NORTH SYLVAN VILLAGE OF SYLVAN, SYLVAN'S SYLVAN PARK

1st SYLVAN BE... SYLVAN SHADY SHORES, Add'n to Sylvan Be... Land & Allen's 2nd Add'n Sylvan

Assessment Roll and Tax List of Real Property in the Town of Sylvan, Minn.

Indicate Type of Property: R-Residential, C-Commercial, I-Industrial, U-Utility, F-Farm, L-Lakeshore, T-Timber, M-Mineral

Form 3C (56) - JULY 1954 - DEPT. OF REVENUE, MINN.

Table with columns: IN WHOSE NAME ASSESSED, TO WHOM TRANSFERRED, SUBDIVISION, Section of Lot, Town or Block, Number of Acres of Land, and ASSESSED VALUATIONS (RURAL, ALL OTHER, MACHINERY, TOTAL ASSESSED VALUE).

Cass County, Minnesota, for Taxes for the Year 1956.

Table with columns: VALUATIONS BY SCHOOL DISTRICTS AS EQUALIZED BY DEPARTMENT OF TAXATION, Tax Including State Homestead, State Tax on Non-Homestead, SPECIAL TAXES, TOTAL TAXES, PAID, WHEN PAID, Number of Receipt, March Settlement, June Settlement, November Settlement, Collections to First Monday in January 1958, Delinquent on First Monday in January 1956, Total Delinquent Tax and Penalty, REMARKS.

132-29, 133-30, NORTH SYLVAN VILLAGE OF SYLVAN, SYLVAN'S SYLVAN PARK, SYLVAN'S SYLVAN PARK, Add'n to SYLVAN BE...

Add'n to SYLVAN BE... SYLVAN SHADY SHORE, Add'n to SYLVAN BE... Land & Aliens 2nd, Land & Aliens...

Assessment Roll and Tax List of Real Property in the Town of Sylvan, Cass County, Minnesota

Indicate Type of Property: R-Residential, C-Commercial, I-Industrial, U-Utility, F-Farm, L-Lakeshore, T-Timber, M-Mineral

Form 30 (50) JULY 1956 EDITION, MINNAPOLIS

Table with columns: IN WHOSE NAME ASSESSED, TO WHOM TRANSFERRED, DESCRIPTION OF PROPERTY, TRUE AND FULL VALUATIONS, ASSESSED VALUATIONS, FINAL EQUALIZED VALUE. Includes handwritten entries for Charles B. Mabel M. Woodhouse, Elmer P. Carrier, Dan & Mary Michauds, Leo M. & Bernice V. Killen, Charles Johnson, and Della Green.

Cass County, Minnesota, for Taxes for the Year 1956.

Table with columns: SOLD FOR TAXES, VALUATIONS BY SCHOOL DISTRICTS AS EQUALIZED BY DEPARTMENT OF TAXATION, Tax including State Homestead, State Tax on Non-Homestead, SPECIAL TAXES, TOTAL TAXES, PAID, WHEN PAID, Number of Receipt, March Settlement 1957, June Settlement 1957, November Settlement 1957, Penalty, Collections to First Monday in January 1958, Delinquent on First Monday in January 1958, Total Delinquent Tax and Penalty, REMARKS. Includes handwritten entries for payments in full and settlement amounts.

132-29, 133-30, NORTH SYLVAN VILLAGE OF SYLVAN, SYLVAN'S SYLVAN PARK

Land & Aileen's 1st Add'n to Sylvan Bldg SYLVAN SHADY SHORES Add'n to Sylvan Bldg Land & Aileen's 2nd Add'n Sylvan Bldg

Assessment Roll and Tax List of Real Property in the Town of Sylvan, Cass County, Minnesota, for Taxes for the Year 1956.

Form 56 (1956)

Indicate Type of Property: R-Residential, C-Commercial, I-Industrial, U-Utility, F-Farm, L-Lakeshore, T-Timber, M-Mineral

Table with columns: IN WHOSE NAME ASSESSED, TO WHOM TRANSFERRED, SUBDIVISION, ACRES, TRUE AND FULL VALUATIONS (LAND, BUILDINGS, MACHINERY, TOTAL), ASSESSED VALUATIONS (RURAL, ALL OTHER, MACHINERY, TOTAL ASSESSED), and FINAL EQUALIZED VALUE.

Cass County, Minnesota, for Taxes for the Year 1956.

Table with columns: SOLD FOR TAXES, VALUATIONS BY SCHOOL DISTRICTS AS EQUALIZED BY DEPARTMENT OF TALENTION, Tax Including State Homestead, State Tax on Non-Homestead, SPECIAL TAXES, TOTAL TAXES, PAID, WHEN PAID, Number of Receipt, March Settlement 1957, June Settlement 1957, November Settlement 1957, Penalty, Collections to First Monday in January 1958, Delinquent on First Monday in January 1958, Total Delinquent Tax and Penalty, REMARKS.

133-29 132-29

133-30

NORTH SYLVAN VILLAGE OF SYLVAN

ALTON'S SYLVAN PARK

Land & Alien's 1st Add'n to Sylvan Bldg SYLVAN SHADY SHORE Land & Alien's 2nd Add'n to Sylvan Bldg

Assessment Roll and Tax List of Real Property in the Town of Sylvan

Indicate Type of Property: R-Residential, C-Commercial, I-Industrial, U-Utility, F-Farm, L-Lakeshore, T-Timber, M-Mineral

Form 50 (50)

Table with columns: IN WHOSE NAME ASSESSED, TO WHOM TRANSFERRED, SUBDIVISION, Sec. of Lot, Town or Block, Reg., Number of Acres of Land, No. School District, Indicate Home-land, Indicate Agricultural, Indicate Type of Property, TRUE AND FULL VALUATIONS (LAND, BUILDINGS, MACHINERY, TOTAL), ASSESSED VALUATIONS (RURAL, ALL OTHER, MACHINERY, TOTAL ASSESSED VALUE), and FINAL EQUALIZED VALUE.

Cass County, Minnesota, for Taxes for the Year 1956.

Table with columns: SOLD FOR TAXES, VALUATIONS BY SCHOOL DISTRICTS AS EQUALIZED BY DEPARTMENT OF TAXATION (District No., Rate, Mills), Tax including State Homestead, State Tax on Non-Homestead, SPECIAL TAXES, TOTAL TAXES, PAID, WHEN PAID (Month, Day, Year), Number of Receipt, March Settlement, June Settlement, November Settlement, Collections to First Monday in January, Delinquent on First Monday in January, Total Delinquent Tax and Penalty, and REMARKS.

132-29

133-30

VILLAGE OF SYLVAN

NORTH SYLVAN PARK

Land & Allen's 1st Add'n to Sylvan Beach SYLVAN SHADY SHORE

Land & Allen's 2nd Add'n to Sylvan Beach

Assessment Roll and Tax List of Real Property in the Town of Sylvan

Indicate Type of Property: R-Residential, C-Commercial, I-Industrial, U-Utility, F-Farm, L-Lakeshore, T-Timber, M-Mineral

Cass County, Minnesota, for Taxes for the Year 1956.

Table with columns: IN WHOSE NAME ASSESSED, TO WHOM TRANSFERRED, SUBDIVISION, TRUE AND FULL VALUATIONS (LAND, BUILDINGS, MACHINERY, TOTAL), ASSESSED VALUATIONS (RURAL, ALL OTHER, MACHINERY, TOTAL), VALUATIONS BY SCHOOL DISTRICTS AS EQUALIZED BY DEPARTMENT OF TAXATION, SOLD FOR TAXES, SPECIAL TAXES, TOTAL TAXES, PAID, WHEN PAID, Number of Receipt, March Settlement, June Settlement, Penalty, November Settlement, Penalty, Collections to First Monday in January, Delinquent on First Monday in January, Total Delinquent Tax and Penalty, REMARKS.

132-29, 133-29, 133-30, NORTH SYLVAN VILLAGE OF SYLVAN, SYLVAN PARK

Land & Alien's 1st Add'n to Sylvan Beach, SYLVAN SHADY SHORES, Land & Alien's 2nd Add'n to Sylvan Beach

Assessment Roll and Tax List of Real Property in the Town of Sylvan, Cass County, Minnesota, for Taxes for the Year 1956.

Cass County, Minnesota, for Taxes for the Year 1956.

Table with columns for IN WHOSE NAME ASSESSED, TO WHOM TRANSFERRED, DESCRIPTION OF PROPERTY, TRUE AND FULL VALUATIONS, ASSESSED VALUATIONS, VALUATIONS BY SCHOOL DISTRICTS AS EQUALIZED BY DEPARTMENT OF TAXATION, SOLD FOR TAXES, SPECIAL TAXES, TOTAL TAXES, PAID, WHEN PAID, Number of Receipt, March Settlement 1957, June Settlement 1957, Penalty, November Settlement 1957, Penalty, Collections to First Monday in January 1958, Penalty, Delinquent on First Monday in January 1958, Total Delinquent Tax and Penalty, REMARKS.

133-29, 133-30, 133-31, 133-32, 133-33, 133-34, 133-35, 133-36, 133-37, 133-38, 133-39, 133-40, 133-41, 133-42, 133-43, 133-44, 133-45, 133-46, 133-47, 133-48, 133-49, 133-50, 133-51, 133-52, 133-53, 133-54, 133-55, 133-56, 133-57, 133-58, 133-59, 133-60, 133-61, 133-62, 133-63, 133-64, 133-65, 133-66, 133-67, 133-68, 133-69, 133-70, 133-71, 133-72, 133-73, 133-74, 133-75, 133-76, 133-77, 133-78, 133-79, 133-80, 133-81, 133-82, 133-83, 133-84, 133-85, 133-86, 133-87, 133-88, 133-89, 133-90, 133-91, 133-92, 133-93, 133-94, 133-95, 133-96, 133-97, 133-98, 133-99, 133-100

Land & Alien's 1st Add'n to Sylvan Bldg, SYLVAN SHADY SHORES, Land & Alien's 2nd Add'n to Sylvan Bldg

Assessment Roll and Tax List of Real Property in the Town of Sylvan, Cass County, Minnesota, for Taxes for the Year 1956.

132-29 133-30 134-31 135-32 136-33 137-34 138-35 139-36 140-37 141-38 142-39 143-40 144-41 145-42 146-43 147-44 148-45 149-46 150-47 151-48 152-49 153-50 154-51 155-52 156-53 157-54 158-55 159-56 160-57 161-58 162-59 163-60 164-61 165-62 166-63 167-64 168-65 169-66 170-67 171-68 172-69 173-70 174-71 175-72 176-73 177-74 178-75 179-76 180-77 181-78 182-79 183-80 184-81 185-82 186-83 187-84 188-85 189-86 190-87 191-88 192-89 193-90 194-91 195-92 196-93 197-94 198-95 199-96 200-97 201-98 202-99 203-100 204-101 205-102 206-103 207-104 208-105 209-106 210-107 211-108 212-109 213-110 214-111 215-112 216-113 217-114 218-115 219-116 220-117 221-118 222-119 223-120 224-121 225-122 226-123 227-124 228-125 229-126 230-127 231-128 232-129 233-130 234-131 235-132 236-133 237-134 238-135 239-136 240-137 241-138 242-139 243-140 244-141 245-142 246-143 247-144 248-145 249-146 250-147 251-148 252-149 253-150 254-151 255-152 256-153 257-154 258-155 259-156 260-157 261-158 262-159 263-160 264-161 265-162 266-163 267-164 268-165 269-166 270-167 271-168 272-169 273-170 274-171 275-172 276-173 277-174 278-175 279-176 280-177 281-178 282-179 283-180 284-181 285-182 286-183 287-184 288-185 289-186 290-187 291-188 292-189 293-190 294-191 295-192 296-193 297-194 298-195 299-196 300-197 301-198 302-199 303-200 304-201 305-202 306-203 307-204 308-205 309-206 310-207 311-208 312-209 313-210 314-211 315-212 316-213 317-214 318-215 319-216 320-217 321-218 322-219 323-220 324-221 325-222 326-223 327-224 328-225 329-226 330-227 331-228 332-229 333-230 334-231 335-232 336-233 337-234 338-235 339-236 340-237 341-238 342-239 343-240 344-241 345-242 346-243 347-244 348-245 349-246 350-247 351-248 352-249 353-250 354-251 355-252 356-253 357-254 358-255 359-256 360-257 361-258 362-259 363-260 364-261 365-262 366-263 367-264 368-265 369-266 370-267 371-268 372-269 373-270 374-271 375-272 376-273 377-274 378-275 379-276 380-277 381-278 382-279 383-280 384-281 385-282 386-283 387-284 388-285 389-286 390-287 391-288 392-289 393-290 394-291 395-292 396-293 397-294 398-295 399-296 400-297 401-298 402-299 403-300 404-301 405-302 406-303 407-304 408-305 409-306 410-307 411-308 412-309 413-310 414-311 415-312 416-313 417-314 418-315 419-316 420-317 421-318 422-319 423-320 424-321 425-322 426-323 427-324 428-325 429-326 430-327 431-328 432-329 433-330 434-331 435-332 436-333 437-334 438-335 439-336 440-337 441-338 442-339 443-340 444-341 445-342 446-343 447-344 448-345 449-346 450-347 451-348 452-349 453-350 454-351 455-352 456-353 457-354 458-355 459-356 460-357 461-358 462-359 463-360 464-361 465-362 466-363 467-364 468-365 469-366 470-367 471-368 472-369 473-370 474-371 475-372 476-373 477-374 478-375 479-376 480-377 481-378 482-379 483-380 484-381 485-382 486-383 487-384 488-385 489-386 490-387 491-388 492-389 493-390 494-391 495-392 496-393 497-394 498-395 499-396 500-397 501-398 502-399 503-400 504-401 505-402 506-403 507-404 508-405 509-406 510-407 511-408 512-409 513-410 514-411 515-412 516-413 517-414 518-415 519-416 520-417 521-418 522-419 523-420 524-421 525-422 526-423 527-424 528-425 529-426 530-427 531-428 532-429 533-430 534-431 535-432 536-433 537-434 538-435 539-436 540-437 541-438 542-439 543-440 544-441 545-442 546-443 547-444 548-445 549-446 550-447 551-448 552-449 553-450 554-451 555-452 556-453 557-454 558-455 559-456 560-457 561-458 562-459 563-460 564-461 565-462 566-463 567-464 568-465 569-466 570-467 571-468 572-469 573-470 574-471 575-472 576-473 577-474 578-475 579-476 580-477 581-478 582-479 583-480 584-481 585-482 586-483 587-484 588-485 589-486 590-487 591-488 592-489 593-490 594-491 595-492 596-493 597-494 598-495 599-496 600-497 601-498 602-499 603-500 604-501 605-502 606-503 607-504 608-505 609-506 610-507 611-508 612-509 613-510 614-511 615-512 616-513 617-514 618-515 619-516 620-517 621-518 622-519 623-520 624-521 625-522 626-523 627-524 628-525 629-526 630-527 631-528 632-529 633-530 634-531 635-532 636-533 637-534 638-535 639-536 640-537 641-538 642-539 643-540 644-541 645-542 646-543 647-544 648-545 649-546 650-547 651-548 652-549 653-550 654-551 655-552 656-553 657-554 658-555 659-556 660-557 661-558 662-559 663-560 664-561 665-562 666-563 667-564 668-565 669-566 670-567 671-568 672-569 673-570 674-571 675-572 676-573 677-574 678-575 679-576 680-577 681-578 682-579 683-580 684-581 685-582 686-583 687-584 688-585 689-586 690-587 691-588 692-589 693-590 694-591 695-592 696-593 697-594 698-595 699-596 700-597 701-598 702-599 703-600 704-601 705-602 706-603 707-604 708-605 709-606 710-607 711-608 712-609 713-610 714-611 715-612 716-613 717-614 718-615 719-616 720-617 721-618 722-619 723-620 724-621 725-622 726-623 727-624 728-625 729-626 730-627 731-628 732-629 733-630 734-631 735-632 736-633 737-634 738-635 739-636 740-637 741-638 742-639 743-640 744-641 745-642 746-643 747-644 748-645 749-646 750-647 751-648 752-649 753-650 754-651 755-652 756-653 757-654 758-655 759-656 760-657 761-658 762-659 763-660 764-661 765-662 766-663 767-664 768-665 769-666 770-667 771-668 772-669 773-670 774-671 775-672 776-673 777-674 778-675 779-676 780-677 781-678 782-679 783-680 784-681 785-682 786-683 787-684 788-685 789-686 790-687 791-688 792-689 793-690 794-691 795-692 796-693 797-694 798-695 799-696 800-697 801-698 802-699 803-700 804-701 805-702 806-703 807-704 808-705 809-706 810-707 811-708 812-709 813-710 814-711 815-712 816-713 817-714 818-715 819-716 820-717 821-718 822-719 823-720 824-721 825-722 826-723 827-724 828-725 829-726 830-727 831-728 832-729 833-730 834-731 835-732 836-733 837-734 838-735 839-736 840-737 841-738 842-739 843-740 844-741 845-742 846-743 847-744 848-745 849-746 850-747 851-748 852-749 853-750 854-751 855-752 856-753 857-754 858-755 859-756 860-757 861-758 862-759 863-760 864-761 865-762 866-763 867-764 868-765 869-766 870-767 871-768 872-769 873-770 874-771 875-772 876-773 877-774 878-775 879-776 880-777 881-778 882-779 883-780 884-781 885-782 886-783 887-784 888-785 889-786 890-787 891-788 892-789 893-790 894-791 895-792 896-793 897-794 898-795 899-796 900-797 901-798 902-799 903-800 904-801 905-802 906-803 907-804 908-805 909-806 910-807 911-808 912-809 913-810 914-811 915-812 916-813 917-814 918-815 919-816 920-817 921-818 922-819 923-820 924-821 925-822 926-823 927-824 928-825 929-826 930-827 931-828 932-829 933-830 934-831 935-832 936-833 937-834 938-835 939-836 940-837 941-838 942-839 943-840 944-841 945-842 946-843 947-844 948-845 949-846 950-847 951-848 952-849 953-850 954-851 955-852 956-853 957-854 958-855 959-856 960-857 961-858 962-859 963-860 964-861 965-862 966-863 967-864 968-865 969-866 970-867 971-868 972-869 973-870 974-871 975-872 976-873 977-874 978-875 979-876 980-877 981-878 982-879 983-880 984-881 985-882 986-883 987-884 988-885 989-886 990-887 991-888 992-889 993-890 994-891 995-892 996-893 997-894 998-895 999-896 1000-897

Table with columns: IN WHOSE NAME ASSESSED, TO WHOM TRANSFERRED, SUBDIVISIONS, DESCRIPTION OF PROPERTY, TRUE AND FULL VALUATIONS, ASSESSED VALUATIONS, VALUATIONS BY SCHOOL DISTRICTS AS EQUALIZED BY DEPARTMENT OF TAXATION, SOLD FOR TAXES, SPECIAL TAXES, TOTAL TAXES, PAID WHEN PAID, Number of Receipt, March Settlement 1957, June Settlement 1957, November Settlement 1957, Penalty, Collections to First Monday in January 1958, Delinquent on First Monday in January 1958, Total Delinquent Tax and Penalty, REMARKS.

SYLVAN SHADY SHORE

Land & Allen's 2nd Add'n to Sylvan Beach

Assessment Roll and Tax List of Real Property in the Township of Sylvan, Cass County, Minnesota, for Taxes for the Year 1956.

Cass County, Minnesota, for Taxes for the Year 1956.

Indicate Type of Property: R-Residential, C-Commercial, I-Industrial, U-Utility, F-Farm, L-Lakeshore, T-Timber, M-Mineral

Table with columns: IN WHOSE NAME ASSESSED, TO WHOM TRANSFERRED, SUBDIVISION, Sec. or Lot, Town or Block, No. of Acres, TRUE AND FULL VALUATIONS (LAND, BUILDINGS, MACHINERY, TOTAL), ASSESSED VALUATIONS (RURAL, ALL OTHER, MACHINERY, TOTAL ASSESSED), FINAL EQUALIZED VALUE.

Table with columns: SOLD FOR TAXES, VALUATIONS BY SCHOOL DISTRICTS AS EQUALIZED BY DEPARTMENT OF TAXATION (District No., Rate, Mills), Tax including State Homestead, State Tax on Non-Homestead, SPECIAL TAXES, TOTAL TAXES, PAID, WHEN PAID, Number of Receipt, March Settlement 1957, June Settlement 1957, Penalty, November Settlement 1957, Collections to First Monday in January 1958, Delinquent on First Monday in January 1958, Total Delinquent Tax and Penalty, REMARKS.

133-29, 133-30, 133-31, 133-32, 133-33, 133-34, 133-35, 133-36, 133-37, 133-38, 133-39, 133-40, 133-41, 133-42, 133-43, 133-44, 133-45, 133-46, 133-47, 133-48, 133-49, 133-50, 133-51, 133-52, 133-53, 133-54, 133-55, 133-56, 133-57, 133-58, 133-59, 133-60, 133-61, 133-62, 133-63, 133-64, 133-65, 133-66, 133-67, 133-68, 133-69, 133-70, 133-71, 133-72, 133-73, 133-74, 133-75, 133-76, 133-77, 133-78, 133-79, 133-80, 133-81, 133-82, 133-83, 133-84, 133-85, 133-86, 133-87, 133-88, 133-89, 133-90, 133-91, 133-92, 133-93, 133-94, 133-95, 133-96, 133-97, 133-98, 133-99, 133-100

Land & Alien's 2nd Add'n to Sylvan Reg'd Add'n Sylvan Reg'd

Assessment Roll and Tax List of Real Property in the Township of Sylvan of Cass County, Minnesota, for Taxes for the Year 1956.

Cass County, Minnesota, for Taxes for the Year 1956.

Form 30 (56)

Indicate Type of Property: R-Residential, C-Commercial, I-Industrial, U-Utility, F-Farm, L-Lakeshore, T-Timber, M-Mineral

Main table with columns: IN WHOSE NAME ASSESSED, TO WHOM TRANSFERRED, DESCRIPTION OF PROPERTY, TRUE AND FULL VALUATIONS, ASSESSED VALUATIONS, VALUATIONS BY SCHOOL DISTRICTS AS EQUALIZED BY DEPARTMENT OF TAXATION, TAX INCLUDING STATE, SPECIAL TAXES, TOTAL TAXES, PAID, WHEN PAID, Number of Receipt, March Settlement 1957, June Settlement 1957, November Settlement 1957, Collections to First Monday in January 1958, Delinquent on First Monday in January 1958, Total Delinquent Tax and Penalty, REMARKS.

133-29, 133-30, 133-31, 133-32, 133-33, 133-34, 133-35, 133-36, 133-37, 133-38, 133-39, 133-40, 133-41, 133-42, 133-43, 133-44, 133-45, 133-46, 133-47, 133-48, 133-49, 133-50, 133-51, 133-52, 133-53, 133-54, 133-55, 133-56, 133-57, 133-58, 133-59, 133-60, 133-61, 133-62, 133-63, 133-64, 133-65, 133-66, 133-67, 133-68, 133-69, 133-70, 133-71, 133-72, 133-73, 133-74, 133-75, 133-76, 133-77, 133-78, 133-79, 133-80, 133-81, 133-82, 133-83, 133-84, 133-85, 133-86, 133-87, 133-88, 133-89, 133-90, 133-91, 133-92, 133-93, 133-94, 133-95, 133-96, 133-97, 133-98, 133-99, 133-100

Land & Allen's 2nd Add'n to Sylvan Beach

Assessment Roll and Tax List of Real Property in the Town of Sylvan, of Sylvan, Minnesota

Cass County, Minnesota, for Taxes for the Year 1956.

Form 50 (1956) MINN. STATE GOVERNMENT, ST. PAUL, MINN. * Indicate Type of Property: R-Residential, C-Commercial, I-Industrial, U-Utility, F-Farm, L-Lakeshore, T-Timber, M-Mineral

Table with columns: IN WHOSE NAME ASSESSED, TO WHOM TRANSFERRED, SUBDIVISION, TRUE AND FULL VALUATIONS, ASSESSED VALUATIONS, and FINAL EQUALIZED VALUE. Includes handwritten entries for John A. McWhorter, F.D. & Florence Schmidt, and Elmer E. Erickson.

Table with columns: VALUATIONS BY SCHOOL DISTRICTS AS EQUALIZED BY DEPARTMENT OF TAXATION, TAXES, PAID, WHEN PAID, and REMARKS. Includes handwritten entries for tax amounts and payment dates.

133-29 133-30 133-31 133-32 133-33 133-34 133-35 133-36 133-37 133-38 133-39 133-40 133-41 133-42 133-43 133-44 133-45 133-46 133-47 133-48 133-49 133-50

Land & Allen's 2nd Add'n to Sylvan Beach Land & Allen's 2nd Add'n to Sylvan Beach

Assessment Roll and Tax List of Real Property in the Town of Sylvan

Indicate Type of Property: R-Residential, C-Commercial, I-Industrial, U-Utility, F-Farm, L-Lakeshore, T-Timber, M-Mineral

Form 5C (56)

Table with columns: IN WHOSE NAME ASSESSED, TO WHOM TRANSFERRED, SUBDIVISION, TRUE AND FULL VALUATIONS (LAND, BUILDINGS, MACHINERY, TOTAL), ASSESSED VALUATIONS (RURAL, ALL OTHER, MACHINERY, TOTAL ASSESSED), FINAL EQUALIZED VALUE.

Cass County, Minnesota, for Taxes for the Year 1956.

Table with columns: SOLD FOR TAXES, VALUATIONS BY SCHOOL DISTRICTS AS EQUALIZED BY DEPARTMENT OF TAXATION, Tax including State Homestead, State Tax on Non-Homestead, SPECIAL TAXES, TOTAL TAXES, PAID, WHEN PAID, Number of Receipt, March Settlement 1957, June Settlement 1957, November Settlement 1957, Collections to First Monday in January 1958, Delinquent on First Monday in January 1956, Total Delinquent Tax and Penalty, REMARKS.

133-29, 133-30, 133-31, 133-32, 133-33, 133-34, 133-35, 133-36, 133-37, 133-38, 133-39, 133-40, 133-41, 133-42, 133-43, 133-44, 133-45, 133-46, 133-47, 133-48, 133-49, 133-50, 133-51, 133-52, 133-53, 133-54, 133-55, 133-56, 133-57, 133-58, 133-59, 133-60, 133-61, 133-62, 133-63, 133-64, 133-65, 133-66, 133-67, 133-68, 133-69, 133-70, 133-71, 133-72, 133-73, 133-74, 133-75, 133-76, 133-77, 133-78, 133-79, 133-80, 133-81, 133-82, 133-83, 133-84, 133-85, 133-86, 133-87, 133-88, 133-89, 133-90, 133-91, 133-92, 133-93, 133-94, 133-95, 133-96, 133-97, 133-98, 133-99, 133-100

Land & Allen's 2nd Add'n to Sylvan Beach

Assessment Roll and Tax List of Real Property in the Town of Sylvan, Cass County, Minnesota, for Taxes for the Year 1956.

Form 50 (56) ... Indicate Type of Property: R-Residential, C-Commercial, I-Industrial, U-Utility, F-Farm, L-Lakeshore, T-Timber, M-Mineral

Table with columns: IN WHOSE NAME ASSESSED, TO WHOM TRANSFERRED, SUBDIVISION, TRUE AND FULL VALUATIONS (RURAL, ALL OTHER, TOTAL ASSESSED VALUE), VALUATIONS BY SCHOOL DISTRICTS AS EQUALIZED BY DEPARTMENT OF TAXATION, TAXES (SOLD FOR TAXES, SPECIAL TAXES, TOTAL TAXES), PAID, WHEN PAID, Number of Receipt, March Settlement 1957, June Settlement 1957, November Settlement 1957, Penalty, Collections to First Monday in January 1958, Delinquent on First Monday in January 1958, Total Delinquent Tax and Penalty, REMARKS.

133-29, 133-30, 133-31, 133-32, 133-33, 133-34, 133-35, 133-36, 133-37, 133-38, 133-39, 133-40, 133-41, 133-42, 133-43, 133-44, 133-45, 133-46, 133-47, 133-48, 133-49, 133-50, 133-51, 133-52, 133-53, 133-54, 133-55, 133-56, 133-57, 133-58, 133-59, 133-60, 133-61, 133-62, 133-63, 133-64, 133-65, 133-66, 133-67, 133-68, 133-69, 133-70, 133-71, 133-72, 133-73, 133-74, 133-75, 133-76, 133-77, 133-78, 133-79, 133-80, 133-81, 133-82, 133-83, 133-84, 133-85, 133-86, 133-87, 133-88, 133-89, 133-90, 133-91, 133-92, 133-93, 133-94, 133-95, 133-96, 133-97, 133-98, 133-99, 133-100

Land & Aileen's 2nd Add'n to Sylvan Beach

Assessment Roll and Tax List of Real Property in the Town of Sylvan

Indicate Type of Property: R-Residential, C-Commercial, I-Industrial, U-Utility, F-Farm, L-Lakeshore, T-Timber, M-Miscellaneous

Form 303-501, JULY 1956 EDITION, MINNAPLANS

Table with columns: IN WHOSE NAME ASSESSED, TO WHOM TRANSFERRED, SUBDIVISION, Sec. or Lot, Town or Block, No. of Acres of Land, TRUE AND FULL VALUATIONS (LAND, BUILDINGS, MACHINERY, TOTAL), ASSESSED VALUATIONS (RURAL, ALL OTHER, MACHINERY, TOTAL ASSESSED), FINAL EQUALIZED VALUE.

Cass County, Minnesota, for Taxes for the Year 1956.

Table with columns: VALUATIONS BY SCHOOL DISTRICTS AS EQUALIZED BY DEPARTMENT OF TAXATION (District No., Rate, Mills), Tax including State Homestead, State Tax on Non-Homestead, SPECIAL TAXES, TOTAL TAXES, PAID, WHEN PAID, Number of Receipt, March Settlement, June Settlement, November Settlement, Collections in First Monday in January 1958, Delinquent on First Monday in January 1958, Total Delinquent Tax and Penalty, REMARKS.

133-29 133-30 133-31 133-32 133-33 133-34 133-35 133-36 133-37 133-38 133-39 133-40 133-41 133-42 133-43 133-44 133-45 133-46 133-47 133-48 133-49 133-50

Land & Allens Add'n Sylvan Beach

Assessment Roll and Tax List of Real Property in the Town of Sylvan

Cass County, Minnesota, for Taxes for the Year 1956.

Form 5-C (56) JULY 1954 REVISED, MINNAPOLIS

Indicate Type of Property: R-Residential, C-Commercial, I-Industrial, U-Utility, F-Farm, L-Lakeshore, T-Timber, M-Mineral

Table with columns: IN WHOSE NAME ASSESSED, TO WHOM TRANSFERRED, SUBDIVISION, DESCRIPTION OF PROPERTY, TRUE AND FULL VALUATIONS, ASSESSED VALUATIONS, VALUATIONS BY SCHOOL DISTRICTS AS EQUALIZED BY DEPARTMENT OF TAXATION, TAX INCLUDING STATE HOMESTEAD, SPECIAL TAXES, TOTAL TAXES, PAID, WHEN PAID, Number of Receipt, March Settlement 1957, June Settlement 1957, Penalty, November Settlement 1957, Penalty, Collections to First Monday in January 1958, Penalty, Delinquent on First Monday in January 1958, Total Delinquent Tax and Penalty, REMARKS.

Land & Allan's 2nd Addition to Sylvan Beach

Raymond & Katherine Herron

Victor L & Vona A. Lohmann

Vernon A. & Ruth C. Olson

Frank L. & Alice M. Allen

Earl M. & Alice J. Nelson

133-29 133-30 133-31 133-32 133-33 133-34 133-35 133-36 133-37 133-38 133-39 133-40 133-41 133-42 133-43 133-44 133-45 133-46 133-47 133-48 133-49 133-50

Land & Allens 2nd Addition Sylvan Beach

Assessment Roll and Tax List of Real Property in the Town of Sylvan, Cass County, Minnesota, for Taxes for the Year 1956.

Cass County, Minnesota, for Taxes for the Year 1956.

Main table with columns: IN WHOSE NAME ASSESSED, TO WHOM TRANSFERRED, DESCRIPTION OF PROPERTY, TRUE AND FULL VALUATIONS, ASSESSED VALUATIONS, VALUATIONS BY SCHOOL DISTRICTS AS EQUALIZED BY DEPARTMENT OF TAXATION, TAXES, PAID, WHEN PAID, Number of Receipt, March Settlement 1957, June Settlement 1957, November Settlement 1957, Collections to First Monday in January 1958, Delinquent on First Monday in January 1958, Total Delinquent Tax and Penalty, REMARKS.

133-29, 133-30, 133-31, 133-32, 133-33, 133-34, 133-35, 133-36, 133-37, 133-38, 133-39, 133-40, 133-41, 133-42, 133-43, 133-44, 133-45, 133-46, 133-47, 133-48, 133-49, 133-50, 133-51, 133-52, 133-53, 133-54, 133-55, 133-56, 133-57, 133-58, 133-59, 133-60, 133-61, 133-62, 133-63, 133-64, 133-65, 133-66, 133-67, 133-68, 133-69, 133-70, 133-71, 133-72, 133-73, 133-74, 133-75, 133-76, 133-77, 133-78, 133-79, 133-80, 133-81, 133-82, 133-83, 133-84, 133-85, 133-86, 133-87, 133-88, 133-89, 133-90, 133-91, 133-92, 133-93, 133-94, 133-95, 133-96, 133-97, 133-98, 133-99, 133-100, 133-101, 133-102, 133-103, 133-104, 133-105, 133-106, 133-107, 133-108, 133-109, 133-110, 133-111, 133-112, 133-113, 133-114, 133-115, 133-116, 133-117, 133-118, 133-119, 133-120, 133-121, 133-122, 133-123, 133-124, 133-125, 133-126, 133-127, 133-128, 133-129, 133-130, 133-131, 133-132, 133-133, 133-134, 133-135, 133-136, 133-137, 133-138, 133-139, 133-140, 133-141, 133-142, 133-143, 133-144, 133-145, 133-146, 133-147, 133-148, 133-149, 133-150, 133-151, 133-152, 133-153, 133-154, 133-155, 133-156, 133-157, 133-158, 133-159, 133-160, 133-161, 133-162, 133-163, 133-164, 133-165, 133-166, 133-167, 133-168, 133-169, 133-170, 133-171, 133-172, 133-173, 133-174, 133-175, 133-176, 133-177, 133-178, 133-179, 133-180, 133-181, 133-182, 133-183, 133-184, 133-185, 133-186, 133-187, 133-188, 133-189, 133-190, 133-191, 133-192, 133-193, 133-194, 133-195, 133-196, 133-197, 133-198, 133-199, 133-200, 133-201, 133-202, 133-203, 133-204, 133-205, 133-206, 133-207, 133-208, 133-209, 133-210, 133-211, 133-212, 133-213, 133-214, 133-215, 133-216, 133-217, 133-218, 133-219, 133-220, 133-221, 133-222, 133-223, 133-224, 133-225, 133-226, 133-227, 133-228, 133-229, 133-230, 133-231, 133-232, 133-233, 133-234, 133-235, 133-236, 133-237, 133-238, 133-239, 133-240, 133-241, 133-242, 133-243, 133-244, 133-245, 133-246, 133-247, 133-248, 133-249, 133-250, 133-251, 133-252, 133-253, 133-254, 133-255, 133-256, 133-257, 133-258, 133-259, 133-260, 133-261, 133-262, 133-263, 133-264, 133-265, 133-266, 133-267, 133-268, 133-269, 133-270, 133-271, 133-272, 133-273, 133-274, 133-275, 133-276, 133-277, 133-278, 133-279, 133-280, 133-281, 133-282, 133-283, 133-284, 133-285, 133-286, 133-287, 133-288, 133-289, 133-290, 133-291, 133-292, 133-293, 133-294, 133-295, 133-296, 133-297, 133-298, 133-299, 133-300, 133-301, 133-302, 133-303, 133-304, 133-305, 133-306, 133-307, 133-308, 133-309, 133-310, 133-311, 133-312, 133-313, 133-314, 133-315, 133-316, 133-317, 133-318, 133-319, 133-320, 133-321, 133-322, 133-323, 133-324, 133-325, 133-326, 133-327, 133-328, 133-329, 133-330, 133-331, 133-332, 133-333, 133-334, 133-335, 133-336, 133-337, 133-338, 133-339, 133-340, 133-341, 133-342, 133-343, 133-344, 133-345, 133-346, 133-347, 133-348, 133-349, 133-350, 133-351, 133-352, 133-353, 133-354, 133-355, 133-356, 133-357, 133-358, 133-359, 133-360, 133-361, 133-362, 133-363, 133-364, 133-365, 133-366, 133-367, 133-368, 133-369, 133-370, 133-371, 133-372, 133-373, 133-374, 133-375, 133-376, 133-377, 133-378, 133-379, 133-380, 133-381, 133-382, 133-383, 133-384, 133-385, 133-386, 133-387, 133-388, 133-389, 133-390, 133-391, 133-392, 133-393, 133-394, 133-395, 133-396, 133-397, 133-398, 133-399, 133-400, 133-401, 133-402, 133-403, 133-404, 133-405, 133-406, 133-407, 133-408, 133-409, 133-410, 133-411, 133-412, 133-413, 133-414, 133-415, 133-416, 133-417, 133-418, 133-419, 133-420, 133-421, 133-422, 133-423, 133-424, 133-425, 133-426, 133-427, 133-428, 133-429, 133-430, 133-431, 133-432, 133-433, 133-434, 133-435, 133-436, 133-437, 133-438, 133-439, 133-440, 133-441, 133-442, 133-443, 133-444, 133-445, 133-446, 133-447, 133-448, 133-449, 133-450, 133-451, 133-452, 133-453, 133-454, 133-455, 133-456, 133-457, 133-458, 133-459, 133-460, 133-461, 133-462, 133-463, 133-464, 133-465, 133-466, 133-467, 133-468, 133-469, 133-470, 133-471, 133-472, 133-473, 133-474, 133-475, 133-476, 133-477, 133-478, 133-479, 133-480, 133-481, 133-482, 133-483, 133-484, 133-485, 133-486, 133-487, 133-488, 133-489, 133-490, 133-491, 133-492, 133-493, 133-494, 133-495, 133-496, 133-497, 133-498, 133-499, 133-500, 133-501, 133-502, 133-503, 133-504, 133-505, 133-506, 133-507, 133-508, 133-509, 133-510, 133-511, 133-512, 133-513, 133-514, 133-515, 133-516, 133-517, 133-518, 133-519, 133-520, 133-521, 133-522, 133-523, 133-524, 133-525, 133-526, 133-527, 133-528, 133-529, 133-530, 133-531, 133-532, 133-533, 133-534, 133-535, 133-536, 133-537, 133-538, 133-539, 133-540, 133-541, 133-542, 133-543, 133-544, 133-545, 133-546, 133-547, 133-548, 133-549, 133-550, 133-551, 133-552, 133-553, 133-554, 133-555, 133-556, 133-557, 133-558, 133-559, 133-560, 133-561, 133-562, 133-563, 133-564, 133-565, 133-566, 133-567, 133-568, 133-569, 133-570, 133-571, 133-572, 133-573, 133-574, 133-575, 133-576, 133-577, 133-578, 133-579, 133-580, 133-581, 133-582, 133-583, 133-584, 133-585, 133-586, 133-587, 133-588, 133-589, 133-590, 133-591, 133-592, 133-593, 133-594, 133-595, 133-596, 133-597, 133-598, 133-599, 133-600, 133-601, 133-602, 133-603, 133-604, 133-605, 133-606, 133-607, 133-608, 133-609, 133-610, 133-611, 133-612, 133-613, 133-614, 133-615, 133-616, 133-617, 133-618, 133-619, 133-620, 133-621, 133-622, 133-623, 133-624, 133-625, 133-626, 133-627, 133-628, 133-629, 133-630, 133-631, 133-632, 133-633, 133-634, 133-635, 133-636, 133-637, 133-638, 133-639, 133-640, 133-641, 133-642, 133-643, 133-644, 133-645, 133-646, 133-647, 133-648, 133-649, 133-650, 133-651, 133-652, 133-653, 133-654, 133-655, 133-656, 133-657, 133-658, 133-659, 133-660, 133-661, 133-662, 133-663, 133-664, 133-665, 133-666, 133-667, 133-668, 133-669, 133-670, 133-671, 133-672, 133-673, 133-674, 133-675, 133-676, 133-677, 133-678, 133-679, 133-680, 133-681, 133-682, 133-683, 133-684, 133-685, 133-686, 133-687, 133-688, 133-689, 133-690, 133-691, 133-692, 133-693, 133-694, 133-695, 133-696, 133-697, 133-698, 133-699, 133-700, 133-701, 133-702, 133-703, 133-704, 133-705, 133-706, 133-707, 133-708, 133-709, 133-710, 133-711, 133-712, 133-713, 133-714, 133-715, 133-716, 133-717, 133-718, 133-719, 133-720, 133-721, 133-722, 133-723, 133-724, 133-725, 133-726, 133-727, 133-728, 133-729, 133-730, 133-731, 133-732, 133-733, 133-734, 133-735, 133-736, 133-737, 133-738, 133-739, 133-740, 133-741, 133-742, 133-743, 133-744, 133-745, 133-746, 133-747, 133-748, 133-749, 133-750, 133-751, 133-752, 133-753, 133-754, 133-755, 133-756, 133-757, 133-758, 133-759, 133-760, 133-761, 133-762, 133-763, 133-764, 133-765, 133-766, 133-767, 133-768, 133-769, 133-770, 133-771, 133-772, 133-773, 133-774, 133-775, 133-776, 133-777, 133-778, 133-779, 133-780, 133-781, 133-782, 133-783, 133-784, 133-785, 133-786, 133-787, 133-788, 133-789, 133-790, 133-791, 133-792, 133-793, 133-794, 133-795, 133-796, 133-797, 133-798, 133-799, 133-800, 133-801, 133-802, 133-803, 133-804, 133-805, 133-806, 133-807, 133-808, 133-809, 133-810, 133-811, 133-812, 133-813, 133-814, 133-815, 133-816, 133-817, 133-818, 133-819, 133-820, 133-821, 133-822, 133-823, 133-824, 133-825, 133-826, 133-827, 133-828, 133-829, 133-830, 133-831, 133-832, 133-833, 133-834, 133-835, 133-836, 133-837, 133-838, 133-839, 133-840, 133-841, 133-842, 133-843, 133-844, 133-845, 133-846, 133-847, 133-848, 133-849, 133-850, 133-851, 133-852, 133-853, 133-854, 133-855, 133-856, 133-857, 133-858, 133-859, 133-860, 133-861, 133-862, 133-863, 133-864, 133-865, 133-866, 133-867, 133-868, 133-869, 133-870, 133-871, 133-872, 133-873, 133-874, 133-875, 133-876, 133-877, 133-878, 133-879, 133-880, 133-881, 133-882, 133-883, 133-884, 133-885, 133-886, 133-887, 133-888, 133-889, 133-890, 133-891, 133-892, 133-893, 133-894, 133-895, 133-896, 133-897, 133-898, 133-899, 133-900, 133-901, 133-902, 133-903, 133-904, 133-905, 133-906, 133-907, 133-908, 133-909, 133-910, 133-911, 133-912, 133-913, 133-914, 133-915, 133-916, 133-917, 133-918, 133-919, 133-920, 133-921, 133-922, 133-923, 133-924, 133-925, 133-926, 133-927, 133-928, 133-929, 133-930, 133-931, 133-932, 133-933, 133-934, 133-935, 133-936, 133-937, 133-938, 133-939, 133-940, 133-941, 133-942, 133-943, 133-944, 133-945, 133-946, 133-947, 133-948, 133-949, 133-950, 133-951, 133-952, 133-953, 133-954, 133-955, 133-956, 133-957, 133-958, 133-959, 133-960, 133-961, 133-962, 133-963, 133-964, 133-965, 133-966, 133-967, 133-968, 133-969, 133-970, 133-971, 133-972, 133-973, 133-974, 133-975, 133-976, 133-977, 133-978, 133-979, 133-980, 133-981, 133-982, 133-983, 133-984, 133-985, 133-986, 133-987, 133-988, 133-989, 133-990, 133-991, 133-992, 133-993, 133-994, 133-995, 133-996, 133-997, 133-998, 133-999, 133-1000.

