

Assessment & Tax List - 1955

Sylvan

COLLECTIONS OF TAXES OF 1956

Town

OF Sylvan

CASS COUNTY, MINNESOTA

FUNDS	MARCH SETTLEMENT 1956	JUNE SETTLEMENT 1956	NOV. SETTLEMENT 1956	Amount Collected from Nov. 18, 2, 3 to First Monday in Jan. 1957	REDUCTIONS	Total Reductions and Collected	BALANCE UNCOLLECTED	ADDITIONS	Total Uncollected to First Monday in January, 1957
State-Non-Homestead	3914	32888	26031	14					
State-Homestead	3756	27737	22319	67					
County Revenue	24321	202221	157075	472					
County Road and Bridge	12145	101146	79565	236					
County Welfare	13266	359752	279435	240					
County Bond and Interest	1957	71719	55909	168					
County House	1737	14437	11216	34					
Town Revenue	1198	9963	7739	23					
Town Road and Bridge	1198	9963	7739	232					
Town Drag	868	7220	5608	17					
Town State Loan									
School Local 1 Mill	868	7219	5608	18					
School Special	(241.02) 28782	296277	245369	421					
School State Loan									
Deficiency	39697	330080	256387	770					
Tuition									
Transportation	938	7797	6056	18					
C.O.	4845	40286	31291	94					
#1 Debt	165	4671	3889	18					
	186259	1614312	1269182	3442					

	SCHOOL DISTRICT NO.	EQUAL 1 MILL	SPECIAL	STATE LOAN	Deficiency	Transport	C.O.	#1 Debt	TOTALS	or Ceased to be Homesteads
MARCH SETTLEMENT	School District No. 6-29-152	81	2030		3715	88	453	81	6446	
	2a-29-152	81	4218		3857	91	471	81	8805	
	1) 6-29-152	528	13203		24145	570	2947	81	4393	
	1) 6a-29-152	175	8731		7982	189	974		18057	
	Totals	868	28102		39697	938	4845	165	74695	
JUNE SETTLEMENT	School District No. 1) 6-29-152	462	11550		21123	492	2578		26212	
	1) 6a-29-152	2086	184318		75388	2253	11672		215687	
	2) 6-29-152	2126	53152		97205	3296	11864	2126	248781	
	2) 6a-29-152	2545	127257		116364	2749	14202	2545	265662	
	Totals	7219	296277		330080	7797	40286	4671	686330	
NOVEMBER SETTLEMENT	School District No. 6-29-152	1401	35018		64042	1513	7816	1060	110858	
	6a-29-152	4207	210351		192345	4543	23475	2127	437048	
	Totals	5608	245369		256387	6056	31291	3187	547898	
NOVEMBER to JANUARY	School District No. (2) 6-29-152	18	421		770	18	94	18	1339	
	Totals	18	421		770	18	94	18	1339	
	ADDITIONS									
REDUCTIONS										

or Ceased to be Homesteads

HOMESTEADS

Sec. or Lot	Town or Block	Range	Number of Acres of Land	Acres	Totals

Assessment Roll and Tax List of Real Property in the Town of Leopold of Leopold County, Minnesota
*Indicate Type of Property: R-Residential, C-Commercial, I-Industrial, U-Utility, F-Farm

Form SCD-155 (1954) - 133-29

133-29 132-29

IN WHOSE NAME ASSESSED	TO WHOM TRANSFERRED	DESCRIPTION OF PROPERTY				TRUE AND FULL VALUATIONS												FINAL EQUALIZED VALUE
		SUBDIVISION	Sec. or Lot	Town or Block	Number of Acres of Land	RURAL				ALL OTHER				Machinery Permanently Attached to Real Estate	TOTAL ASSESSED VALUE	Total Assessed Value as Equalized by the Board of Review		
						Acres	100ths	Homestead Up to \$4,000 20%	Over \$4,000 and Non-Homestead 33 1/3%	Homestead Up to \$1,000 25%	Over \$1,000 and Non-Homestead 40%	Dollars	Dollars				Dollars	
Arnold Grandy		Sub 1 Sec 33.2, 34.2	4	133 29	4.25													
Geo. B. Anderson		NW 1/4 of NW 1/4 Sub 2			37.25													
Severin J. Anderson		SW 1/4 of NW 1/4 Sec 2, 9			31.10													
Arnold Grandy		part of SE 1/4 of NW 1/4			25.20													
Minnesota Power & Light Co		33.2 ac. of Sub 1, 14.8 ac. of Sub 2 of 71 E 1/4			48													
Harold & Helen Veith		Sub 3 NE 1/4 of NW 1/4 Sec 6, 4, 45																
"		Sub 4 NW 1/4 of NW 1/4 Sec 6, 4, 45			68.45													
"		SW 1/4 of NW 1/4																
"		SE 1/4 of NW 1/4																
Minnesota Power & Light Co		2.9 ac. of Sub 1 of 71 E 1/4			8.9													
Severin J. Anderson		NE 1/4 of SW 1/4			40													
Minnesota Power & Light Co		NW 1/4 of SW 1/4			40													
"		SW 1/4 of SW 1/4			40													
Severin J. Anderson		SE 1/4 of SW 1/4			40													
Minnesota Power & Light Co		64.45 ac. of Sub 3 & 4 of 71 W 1/4			64.45													
State of Minnesota		NE 1/4 of SE 1/4																
Severin J. Anderson		NW 1/4 of SE 1/4			40													
John W. Emily Peterson		SW 1/4 of SE 1/4			40													
"		SE 1/4 of SE 1/4			40													
					567.60													

Cass County, Minnesota, for Taxes for the Year 1955.

SOLD FOR TAXES	VALUATIONS BY SCHOOL DISTRICTS AS EQUALIZED BY DEPARTMENT OF TAXATION						Tax including State Homestead	State Tax on Non-Homestead	SPECIAL TAXES	TOTAL TAXES	PAID	WHEN PAID	Number of Receipts	March Settlement 1956	June Settlement 1956	Penalty	November Settlement 1956	Penalty	Collections to First Monday in January 1957	Penalty	Delinquent on First Monday in January 1957	Total Delinquent Tax and Penalty	REMARKS
	District No.	District No.	District No.	District No.	District No.	District No.																	
	Rate	Rate	Rate	Rate	Rate	Rate																	
1	10						204		204	1	PAID IN FULL	MAY 31 1956	8776		204								
2	50						1016		1016	2	PAID IN FULL	MAY 31 1956	8776		1016								
3	37						752		752	3	PAID IN FULL	MAY 31 1956	8316		752								
4	150						3050		3050	4	PAID IN FULL	MAY 31 1956	8776		3050								
5	140						2848	72	2920	5	1st Half Paid	MAY 31 1956	10296		1460		1460						
6										6													
7	242						4922		4922	7	2nd Half Paid	OCT 31 1956	15167		3461		2461						
8										8	1st Half Paid	MAY 31 1956	8993										
9										9													
10	32						650	16	666	10	2nd Half Paid	OCT 31 1956	16213		353		333						
11	39						794		794	11	PAID IN FULL	MAY 31 1956	8316		794								
12	107						2176	56	2232	12	2nd Half Paid	OCT 31 1956	16213		2232		2232						
13	107						2176	56	2232	13	1st Half Paid	MAY 31 1956	10296										
14	28						570		570	14	PAID IN FULL	MAY 31 1956	8316		570								
15	192						3904	100	4004	15	2nd Half Paid	MAY 31 1956	16213		2002		2002						
16										16													
17	105						2136		2136	17	PAID IN FULL	MAY 31 1956	8316		2136								
18	20						406		406	18	PAID IN FULL	MAY 31 1956	9880		812								
19	20						406		406	19	PAID IN FULL	MAY 31 1956											
20	701						26010	300	26310	20					17822		8438						

Village of St. Yvan

133-29

North St. Yvan

part of St. Yvan Park

part of St. Yvan

Assessment Roll and Tax List of Real Property in the Town of Sylvan, Minnesota

Cass County, Minnesota, for Taxes for the Year 1955.

133-29 132-29

IN WHOSE NAME ASSESSED	TO WHOM TRANSFERRED	DESCRIPTION OF PROPERTY				TRUE AND FULL VALUATIONS				ASSESSED VALUATIONS					FINAL EQUALIZED VALUE		
		SUBDIVISION	Sec. or Lot	Town or Block	No. of Acres of Land	LAND Exclusive of Structures and Improvements	BUILDINGS and Other Structures	MACHINERY Permanently Attached to Real Estate	TOTAL True and Full Value	RURAL		ALL OTHER		MACHINERY Permanently Attached to Real Estate		TOTAL ASSESSED VALUE	Total Assessed Value as Equalized by the Board of Review
										Acres	100ths	Homestead Up to \$1,000 20%	Over \$4,000 and Non-Homestead 33 1/3%				
Chas. & Caroline Peterson		NE 1/4 of NE 1/4	5	133 29	36.36												
"		NW 1/4 of NE 1/4			36.36												
"		SW 1/4 of NE 1/4			40												
"		SE 1/4 of NE 1/4			40												
Harold Selbo & Jens Peterson		NE 1/4 of NW 1/4			36.24												
"		NW 1/4 of NW 1/4			36.14												
"		SW 1/4 of NW 1/4			40												
"		SE 1/4 of NW 1/4			40												
George & Lucy Clark		NE 1/4 of SW 1/4			40												
"		NW 1/4 of SW 1/4			40												
Rasmus & Laura Peterson		SW 1/4 of SW 1/4			40												
"		SE 1/4 of SW 1/4			40												
Emily & John W. Peterson		NE 1/4 of SE 1/4			40												
George & Lucy Clark		NW 1/4 of SE 1/4			40												
"		SW 1/4 of SE 1/4			40												
Minnesota Power & Light Co.		SE 1/4 of SE 1/4			40												
					62502												

SOLD FOR TAXES	VALUATIONS BY SCHOOL DISTRICTS AS EQUALIZED BY DEPARTMENT OF TAXATION						Tax including State Homestead	State Tax on Non-Homestead	SPECIAL TAXES	TOTAL TAXES	PAID	WHEN PAID	Number of Receipt	March Settlement 1956	June Settlement 1956	Penalty	November Settlement 1956	Penalty	Collections to First Monday in January 1957	Penalty	Delinquent on First Monday in January 1957	Total Delinquent Tax and Penalty	REMARKS
	District No.	District No.	District No.	District No.	District No.	District No.																	
	Rate	Rate	Rate	Rate	Rate	Rate																	
1	#1	59					1200		1200		2nd Half Paid	OCT 31 1956											
2	#1	298					6060		6060		1st Half Paid	MAY 31 1956	15070		4820		4820						
3	#1	73					1484		1484		2nd Half Paid	OCT 31 1956											
4	#1	49					996		996		1st Half Paid	MAY 31 1956											
5																							
6	#1	85					1928		1928		2nd Half Paid	OCT 31 1956			864		864						
7	#1	239					4860		4860		1st Half Paid	MAY 31 1956	8349		2430		2430						
8	#1	53					1028		1028		2nd Half Paid	OCT 31 1956			539		539						
9	#1	69					1404		1404		1st Half Paid	MAY 31 1956	15152		702		702						
10																							
11	#1	56					1138		1138		2nd Half Paid	OCT 31 1956	15709		569		569						
12	#1	48					976		976		1st Half Paid	MAY 31 1956	8345		488		488						
13	#1	425					8642		8642		2nd Half Paid	OCT 31 1956	15150		4321		4321						
14	#1	71					1444		1444		1st Half Paid	MAY 31 1956	8350		722		722						
15																							
16		48					976	24	1000		PAID IN FULL	MAY 31 1956	8892		1000								
17	#1	310					6304		6304		2nd Half Paid	OCT 31 1956	15709		3152		3152						
18	#1	94					1912		1912		1st Half Paid	MAY 31 1956	8345		956		956						
19		120					2440	62	2502		2nd Half Paid	OCT 31 1956	16213		1251		1251						
20	#1	1929					42642	46	42728		1st Half Paid	MAY 31 1956	16276		21864		20864						

Village of Sylvan

133-30

North Sylvan

Bar Lyon's Sylvan Park

2nd 1/2 of 1st

Assessment Roll and Tax List of Real Property in the Town of Sylvan of Sylvan County, Minnesota. *Indicate Type of Property: R-Residential, C-Commercial, I-Industrial, U-Utility, F-Farm

Form SCD(55) JULY-1954

133-29 132-29

IN WHOSE NAME ASSESSED	TO WHOM TRANSFERRED	DESCRIPTION OF PROPERTY				TRUE AND FULL VALUATIONS			ASSESSED VALUATIONS					FINAL EQUALIZED VALUE		
		SUBDIVISION	Sec. or Lot	Town or Block	Number of Acres of Land	LAND Exclusive of Structures and Improvements	BUILDINGS and Other Structures	MACHINERY Permanently Attached to Real Estate	RURAL		ALL OTHER		MACHINERY Permanently Attached to Real Estate		TOTAL ASSESSED VALUE	Total Assessed Value as Equalized by the Board of Review
									Acres	100ths	Homestead Up to \$1,000 20%	Over \$4,000 and Non-Homestead 33 1/3%				
1 Wm H. Staub & Lona Peterson		NE 1/4 of NE 1/4	8	33 29	40											
2 Minnesota Power & Light Co.		NW 1/4 of NE 1/4			40											
3 "		SW 1/4 of NE 1/4			40											
4 "		SE 1/4 of NE 1/4			40											
5 "																
6 Frank Satter		NE 1/4 of NW 1/4			40											
7 "		NW 1/4 of NW 1/4			40											
8 1/2 of NW 1/4 Sec 17		SW 1/4 of NW 1/4			63											
9 "		SE 1/4 of NW 1/4														
10 "																
11 Minnesota Power & Light Co.		NE 1/4 of SW 1/4			40											
12 George Larson		1/2 of SW 1/4 Sec 18			62											
13 "		SW 1/4 of SW 1/4														
14 Minnesota Power & Light Co.		SE 1/4 of SW 1/4			40											
15 "		35 acs. of 1/2 of NW 1/4 + 1/2 of SW 1/4			35											
16 C. H. McAninch		NE 1/4 of SE 1/4			40											
17 Minnesota Power & Light Co.		NW 1/4 of SE 1/4			40											
18 "		SW 1/4 of SE 1/4			40											
19 C. H. McAninch		SE 1/4 of SE 1/4			40											
20 "					640											

Cass County, Minnesota, for Taxes for the Year 1955.

SOLD FOR TAXES	VALUATIONS BY SCHOOL DISTRICTS AS EQUALIZED BY DEPARTMENT OF TAXATION						Tax Including State Homestead	State Tax on Non-Homestead	SPECIAL TAXES	TOTAL TAXES	PAID	WHEN PAID	Number of Receipt	March Settlement 1956	June Settlement 1956	Penalty	November Settlement 1956	Penalty	Collections to First Monday in January 1957	Penalty	Delinquent on First Monday in January 1957	Total Delinquent Tax and Penalty	REMARKS
	District No.	District No.	District No.	District No.	District No.	District No.																	
	Rate	Rate	Rate	Rate	Rate	Rate																	
1 SOLD FOR TAXES																							
2							406	10		416													
3							2440	62		2502		2nd half Paid OCT 31 1956											
4							2440	62		2502		1st Half Paid MAY 21 1956											
5							2440	62		2502		2nd Half Paid OCT 31 1956											
6							6060	154		6214		PAID IN FULL AUG 31 1956											
7							1626	42		1668		PAID IN FULL AUG 31 1956											
8							2766	70		2836		PAID IN FULL AUG 31 1956											
9																							
10																							
11							2440	62		2502		2nd Half Paid OCT 31 1956											
12							3314			3314		1st Half Paid MAY 21 1956											
13																							
14							2440	62		2502		2nd Half Paid OCT 31 1956											
15							2136	54		2190		1st Half Paid MAY 31 1956											
16							772			772		2nd Half Paid OCT 31 1956											
17							2440	62		2502		1st Half Paid MAY 31 1956											
18							2440	62		2502		2nd Half Paid OCT 31 1956											
19							2014			2014		1st Half Paid MAY 31 1956											
20							300			300		PAID IN FULL											

Village of Sylvan

133-30

North Sylvan

Lyons's Sylvan Park

and Albert's 1st

Assessment Roll and Tax List of Real Property in the Town of Sylvania of Sylvania

Indicate Type of Property: R-Residential, C-Commercial, I-Industrial, U-Utility, F-Farm

133-29 132-29

Table with columns: IN WHOSE NAME ASSESSED, TO WHOM TRANSFERRED, SUBDIVISION, TRUE AND FULL VALUATIONS, ASSESSED VALUATIONS, FINAL EQUALIZED VALUE. Includes handwritten entries for John A. Miller, Minnesota Power & Light Co, and various land parcels.

Cass County, Minnesota, for Taxes for the Year 1955.

Table with columns: SOLD FOR TAXES, VALUATIONS BY SCHOOL DISTRICTS AS EQUALIZED BY DEPARTMENT OF TAXATION, Tax including State Homestead, SPECIAL TAXES, TOTAL TAXES, PAID, WHEN PAID, Number of Receipt, March Settlement 1956, June Settlement 1956, November Settlement 1956, Collections to First Monday in January 1957, Delinquent on First Monday in January 1957, Total Delinquent Tax and Penalty, REMARKS. Includes handwritten entries for various parcels and tax payments.

Village of Sylvania

133-30

North Sylvania

Carlson's Sylvania Park Beach

and Allen's L...

Assessment Roll and Tax List of Real Property in the Town of Sylvan, Minnesota

Indicate Type of Property: R-Residential, C-Commercial, I-Industrial, U-Utility, F-Farm

Table with columns: IN WHOSE NAME ASSESSED, TO WHOM TRANSFERRED, DESCRIPTION OF PROPERTY, TRUE AND FULL VALUATIONS, ASSESSED VALUATIONS, and FINAL EQUALIZED VALUE.

Cass County, Minnesota, for Taxes for the Year 1955.

Table with columns: SOLD FOR TAXES, VALUATIONS BY SCHOOL DISTRICTS AS EQUALIZED BY DEPARTMENT OF TAXATION, Tax including State Homestead, State Tax on Non-Homestead, SPECIAL TAXES, TOTAL TAXES, PAID, WHEN PAID, Number of Receipt, March Settlement 1956, June Settlement 1956, November Settlement 1956, Penalty, Collections to Five Monday in January 1957, Delinquent on First Monday in January 1957, Total Delinquent Tax and Penalty, REMARKS.

133-29 132-29

Village of Sylvan

North Sylvan

Barlyon's Sylvan Park

and Allen's 1st

Assessment Roll and Tax List of Real Property in the Town of Sylvan of Sylvan

*Indicate Type of Property: R-Residential, C-Commercial, I-Industrial, U-Utility, F-Farm

Form 50D (55)

Table with columns: IN WHOSE NAME ASSESSED, TO WHOM TRANSFERRED, SUBDIVISION, TRUE AND FULL VALUATIONS, ASSESSED VALUATIONS, FINAL EQUALIZED VALUE.

Cass County, Minnesota, for Taxes for the Year 1955.

Table with columns: VALUATIONS BY SCHOOL DISTRICTS AS EQUALIZED BY DEPARTMENT OF TAXATION, TAXES, PAID, WHEN PAID, March Settlement 1956, June Settlement 1956, November Settlement 1956, Delinquent on First Monday in January 1957, Total Delinquent Tax and Penalty, REMARKS.

133-28 132-29

Village of Sylvan

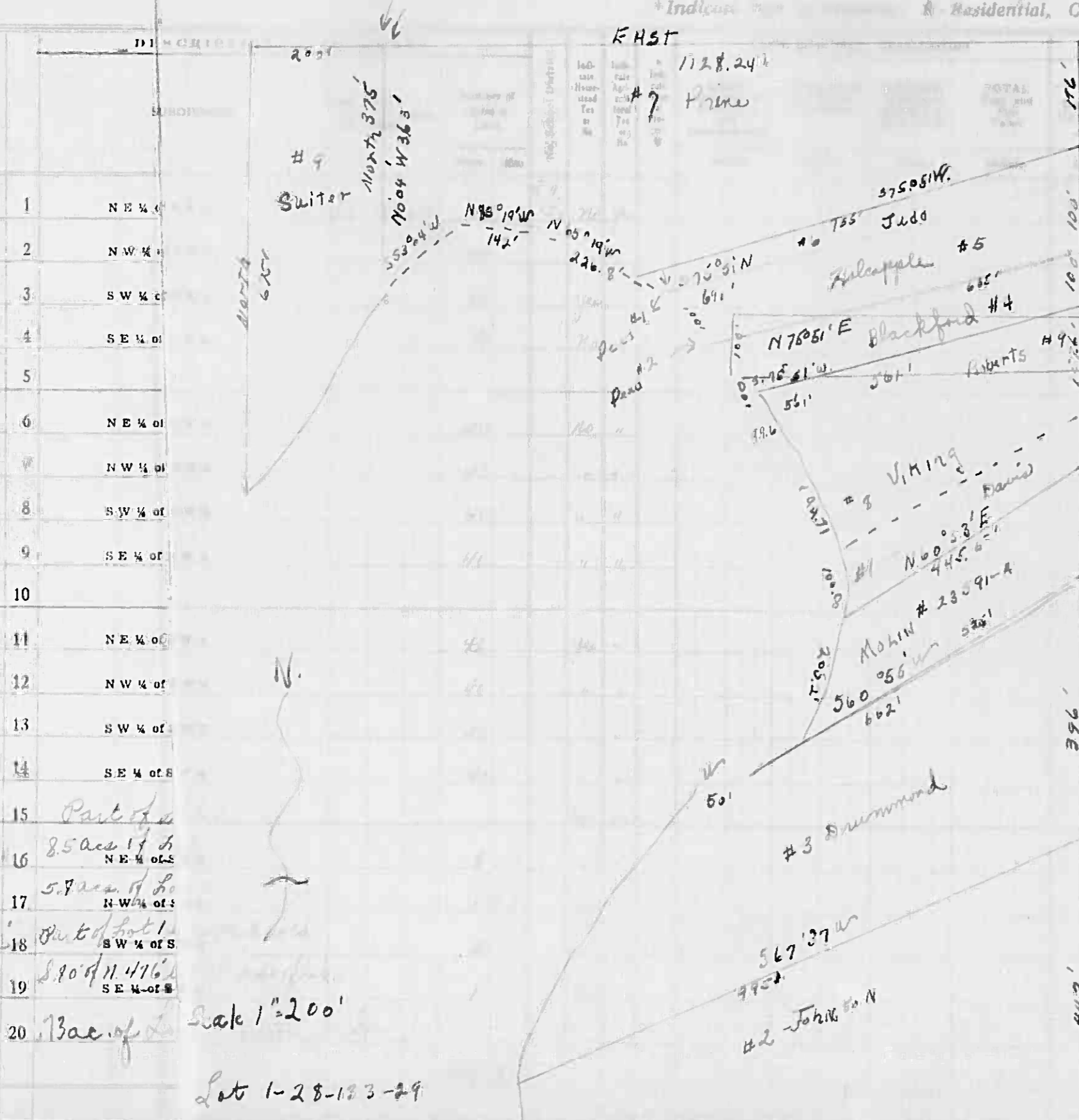
North Sylvan

Carlton's Sylvan Park

Land & Albert's 1st

133-29

IN WHOSE NAME ASSESSED	TO WHOM TRANSFERRED	SECTION	ACRES
Harold Carlson		1	NE 1/4 of
"	"	2	NW 1/4 of
Ole Peterson		3	SW 1/4 of
Harold Carlson		4	SE 1/4 of
		5	
Edward & Alice O. Peterson		6	NE 1/4 of
"	"	7	NW 1/4 of
"	"	8	SW 1/4 of
"	"	9	SE 1/4 of
		10	
Ole Peterson		11	NE 1/4 of
"	"	12	NW 1/4 of
"	"	13	SW 1/4 of
"	"	14	SE 1/4 of
Donald W. & Helen M. Miller	Part of	15	8.5 acs of NE 1/4 of S
Georgia A. Johnson & Charles Johnson	5.7 acs of S	16	NW 1/4 of S
Arthur C. & Gladys M. Drummond	Part of	17	SW 1/4 of S
Walter & Isabel Wiking & Estelle Koli	8.80 acs of N	18	SE 1/4 of S
Grace M. Roberts		19	
Royal Miller		20	



ASSESSED VALUATIONS					Total Assessed Value as Equalized by the Board of Review	FINAL EQUALIZED VALUE
ALL OTHER	Over \$4,000 Homestead	Machinery Permanently Attached to Real Estate	TOTAL ASSESSED VALUE	Dollars		
Dollars	Dollars	Dollars	Dollars	Dollars	Dollars	

SOLD FOR TAXES	VALUATIONS BY SCHOOL DISTRICTS AS EQUALIZED BY DEPARTMENT OF TAXATION						Tax including State Homestead	State Tax on Non-Homestead	SPECIAL TAXES	TOTAL TAXES	PAID	WHEN PAID	Number of Receipt	March Settlement 1956	June Settlement 1956	Penalty	November Settlement 1956	Penalty	Collections to First Monday in January 1957	Penalty	Delinquent on First Monday in January 1957	Total Delinquent Tax and Penalty	REMARKS
	District No.	District No.	District No.	District No.	District No.	District No.																	
1						93	1882	48	1930	1											1930		
2						93	1882	48	1930	2											1930		
3						62	1254		1254	3											8254	1379	
4						93	1882	48	1930	4											1930		
5										5													
6						180	3642	60	3736	6	Balance Paid	AUG 6 1956											
7						134	2712	70	2782	7	Part Paid	MAY 31 1956	10751										
8						134	2712	70	2782	8	Balance Paid	AUG 6 1956	8888	6085	5997								
9						134	2712	70	2782	9	Part Paid	MAY 31 1956											
10										10													
11						72	1456		1456	11											1456		
12						76	1538		1538	12											1538		
13						48	972		972	13											972		
14						48	972		972	14											972		
15						48	972	24	996	15											996	1096	
16						11.3	2286	58	2344	16	PAID IN FULL	MAY 31 1956	8882	2344									
17						83	1680		1680	17	2nd Half Paid	OCT 1 1956	14087										
18						63	1274		1274	18	1st Half Paid	MAY 31 1956	8800	840	840								
19						145	2934	74	3008	19	Balance Paid	OCT 31 1956	1849										
20						452	9048	604	9660	20	Part Paid	OCT 13 1956	18576										
						167	32762	604	33366														
						1619																	

Lot 1-28-123-29

Village of Sylvan

133-30

North Sylvan

Barlyon's Swan Park

Land & Allen's 1st

Assessment Roll and Tax List of Real Property in the Town of Sylvan

*Indicate Type of Property: R-Residential, C-Commercial, I-Industrial, U-Utility, F-Farm

Form SCD (55) MARRIAGE COMPANY, MINNEAPOLIS

133-28

IN WHOSE NAME ASSESSED	TO WHOM TRANSFERRED	DESCRIPTION OF PROPERTY				No. School District	Indicate Homestead To or No	Indicate Agricultural Yes or No	Indicate Type of Property	TRUE AND FULL VALUATIONS				ASSESSED VALUATIONS					Total Assessed Value as Equalized by the Board of Review	FINAL EQUALIZED VALUE		
		SUBDIVISION	Sec. or Lot	Town or Block	King					Number of Acres of Land	LAND Exclusive of Structures and Improvements	BUILDINGS and Other Structures	MACHINERY Permanently Attached to Real Estate	TOTAL True and Full Value	RURAL		ALL OTHER				MACHINERY Permanently Attached to Real Estate	TOTAL ASSESSED VALUE
															Acres	100ths	Homestead Up to \$4,000 20%	Over \$4,000 and Non-Homestead 33 1/3%				
Geo. W. & Agnes S. Prince		Part of Lot 1	28	13329		752																
Ole Peterson		Lot 2				3995																
G. D. McKisson		Lot 3				2225																
Richard M. & Georgia Johnson		Lot 4				250																
Clifford C. & Gladys B. Suter		W. 200' of Lot 1				3																
Elizabeth Davis		1 ac. of Lot 1				1																
G. E. & Lorraine Blackford		8,100' of N. 3/4 of Section E. side of NW 1/4 of NW 1/4 Hardy Lake				1																
Fred Dinger		8,100' of N. 2/4 of Section E. side of SW 1/4 of NW 1/4 Hardy Lake				1																
		SE 1/4 of NW 1/4																				
Harry C. & Cecile B. Judd		Part of Lot 1																				
		NE 1/4 of SW 1/4																				
		NW 1/4 of SW 1/4																				
		SW 1/4 of SW 1/4																				
		SE 1/4 of SW 1/4																				
		NE 1/4 of SE 1/4																				
		NW 1/4 of SE 1/4																				
		SW 1/4 of SE 1/4																				
		SE 1/4 of SE 1/4																				

8822

Cass County, Minnesota, for Taxes for the Year 1955.

SOLD FOR TAXES	VALUATIONS BY SCHOOL DISTRICTS AS EQUALIZED BY DEPARTMENT OF TAXATION						Tax Including State Homestead	State Tax on Non-Homestead	SPECIAL TAXES	TOTAL TAXES	PAID	WHEN PAID	Number of Receipt	March Settlement 1956	June Settlement 1956	Penalty	November Settlement 1956	Penalty	Collections to First Monday in January 1957	Penalty	Delinquent on First Monday in January 1957	Total Delinquent Tax and Penalty	REMARKS	
	District No.	District Rate	District No.	District Rate	District No.	District Rate																		
	Dollars	Dollars	Dollars	Dollars	Dollars	Dollars																		
1	#1	2845					7386	146	7532	1	PAID IN FULL MAY 31 1956	8801		1532										
2	#1	57					1154		1154	2	PAID IN FULL AUG 6 1956	10746				1154								
3	#1	75					9518	38	1556	3	2nd Half Paid AUG 4 1956	13429				778								
4	#1	11					222	06	228	4	1st Half Paid MAY 31 1956	1121				778								
5	#1	180					3642		3642	5	PAID IN FULL MAY 31 1956	8802				228								
6	#1	87					1780	46	1826	6	Balance Paid APR 2 1956	5242				1784								
7	#1	107					2166	86	2222	7	PAID IN FULL MAY 31 1956	9799				2222								
8	#1	35					708	18	726	8													726	
9	#1									9														
10	#1	55					1112	28	1140	10	2nd Half Paid APR 4 1956	14466				570								
11	#1									11	1st Half Paid MAY 31 1956	8804				570								
12	#1									12														
13	#1									13														
14	#1									14														
15	#1									15														
16	#1									16														
17	#1									17														
18	#1									18														
19	#1									19														
20	#1									20														
	#1	318					19688	938	20026															
	#1	65																						
	#1	973																						

Village of Sylvan

133-29

North Sylvan

Carlson's Sylvan Park

Hard & Olsen's 1st

1st to Sylvan

Assessment Roll and Tax List of Real Property in the Town of Sylvan, Minnesota

Indicate Type of Property: R-Residential, C-Commercial, I-Industrial, U-Utility, F-Farm

133-29 132-29

Table with columns: IN WHOSE NAME ASSESSED, TO WHOM TRANSFERRED, SUBDIVISION, TRUE AND FULL VALUATIONS, ASSESSED VALUATIONS, and FINAL EQUALIZED VALUE. Includes handwritten entries for Minnesota Power & Light Co and Eddie Pierce.

Cass County, Minnesota, for Taxes for the Year 1955.

Table with columns: VALUATIONS BY SCHOOL DISTRICTS AS EQUALIZED BY DEPARTMENT OF TAXATION, TAXES, PAID, WHEN PAID, and REMARKS. Includes handwritten entries for tax payments and dates.

Village of Sylvan, North Sylvan, Parlyon's Sylvan Park Beach, and Allen's Sylvan

Assessment Roll and Tax List of Real Property in the Town of Sylvania

Indicate Type of Property: R-Residential, C-Commercial, I-Industrial, U-Utility, F-Farm

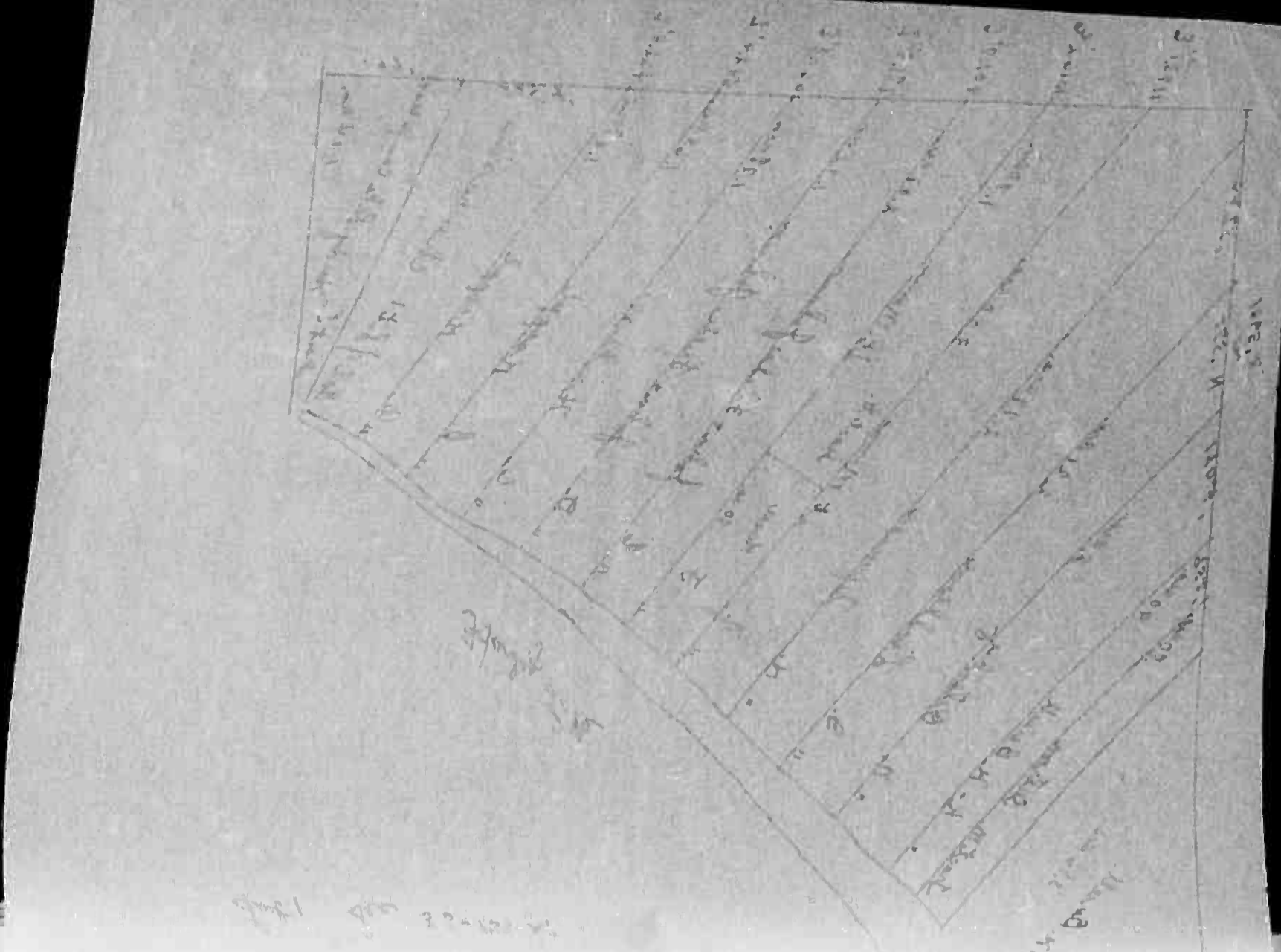


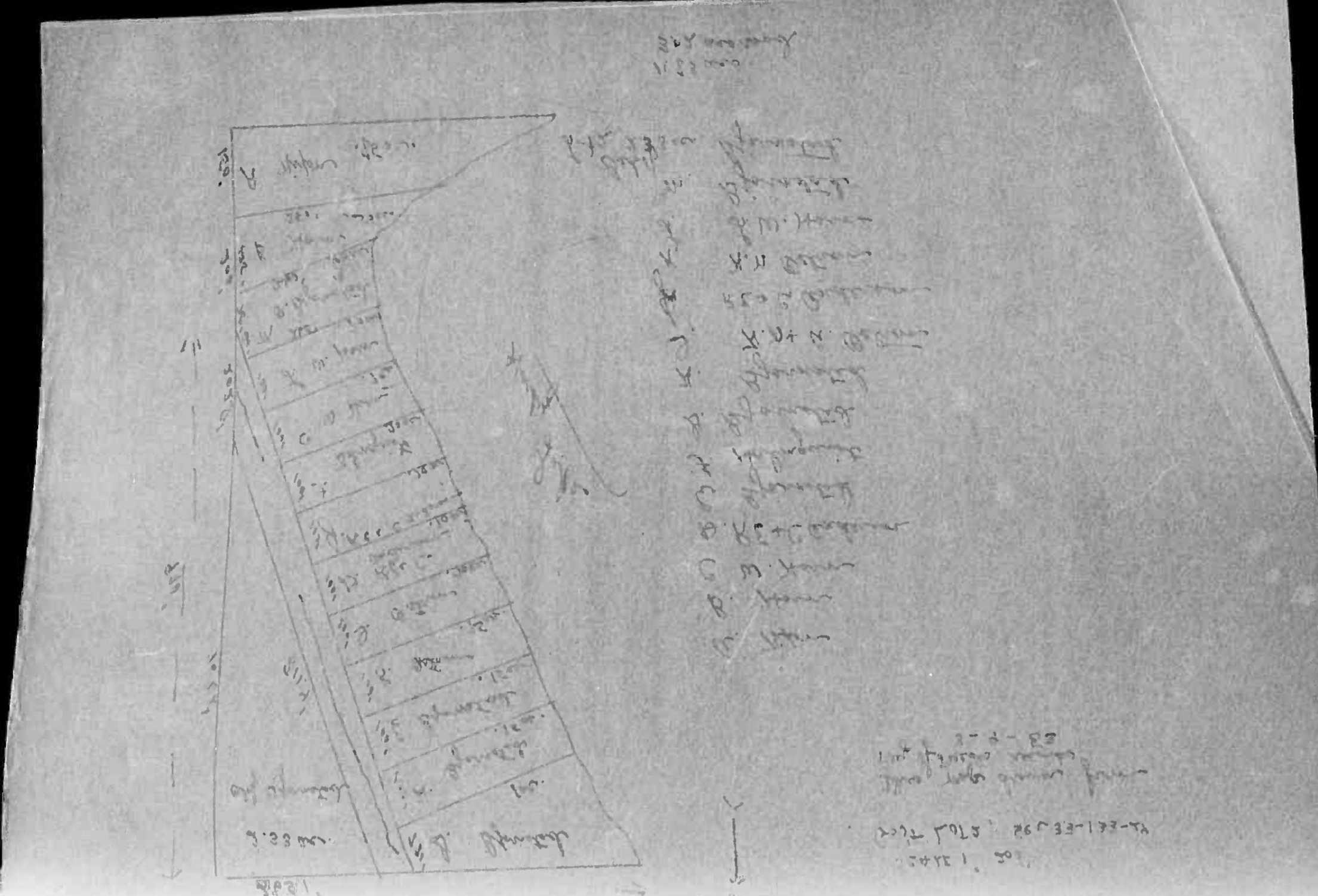
Table with columns: IN WHOSE NAME ASSESSED, TO WHOM TRANSFERRED, SUBDIVISION, Sec. of Lot, Town or Block, Number of Acres of Land, No. Section District, Ind. rate Homestead Tax, Ind. rate Agricultural Tax, Ind. rate Property Tax, TRUE AND FULL VALUATIONS (LAND, BUILDINGS, MACHINERY, TOTAL True and Full Value), ASSESSED VALUATIONS (RURAL, ALL OTHER, MACHINERY, TOTAL ASSESSED VALUE), Total Assessed Value as Equalized by the Board of Review, FINAL EQUALIZED VALUE.

Cass County, Minnesota, for Taxes for the Year 1955.

Table with columns: SOLD FOR TAXES, District No., District Rate, District No., District Rate, District No., District Rate, District No., District Rate, District No., District Rate, Tax Including State Homestead, State Tax on Non-Homestead, SPECIAL TAXES, TOTAL TAXES, PAID, WHEN PAID, Number of Receipt, March Settlement 1956, June Settlement 1956, Penalty, November Settlement 1956, Penalty, Collections to First Monday in January 1957, Delinquent on First Monday in January 1957, Total Delinquent Tax and Penalty, REMARKS.

133-29 132-29

Village of Sylvania, North Sylvania, Parlyon's Sylvania Partnership, Land & Albert's 1st



Indicate Type of Property: R-Residential, C-Commercial, I-Industrial, U-Utility, F-Farm

IN WHOSE NAME ASSESSED	TO WHOM TRANSFERRED	SUBDIVISION	Sec. of Lot	Town of Block	Number of Acres of Land	Info. on Transfer	Ind. on Transfer	Ind. on Transfer	TRUE AND FULL VALUATIONS					TOTAL ASSESSED VALUE	Total Assessed Value as Reported by the Assessor	FINAL EQUALIZED VALUE
									LAND	BUILDINGS	MACHINERY	TOTAL	RURAL			
Allison H. & Esther L. Nipon (Co. A)		.75 acs of Sect 2 N.W. 1/4 of N.W. 1/4	33	13329	85	152	70	40								
Walter L. & Wilhelmine A. Horn (Co. B)		.55 acs of Sect 2 N.W. 1/4 of N.W. 1/4			55											
Olof Sjornstad (Co. M)		.65 acs of Sect 2 S.W. 1/4 of N.W. 1/4			65											
Ralph E. & Casselyle Radson (Co. D)		.70 acs of Sect 2 S.E. 1/4 of N.W. 1/4			70											
Olof Sjornstad (Co. E)		.75 acs of Sect 2 N.E. 1/4 of N.W. 1/4			75											
Herman Holmquist (Co. F)		.70 acs of Sect 2 N.E. 1/4 of N.W. 1/4			70											
Olof Sjornstad (Co. G)		.75 acs of Sect 2 N.W. 1/4 of N.W. 1/4			75											
" " (Co. H)		.75 acs of Sect 2 S.W. 1/4 of N.W. 1/4			75											
Harry M. & Alice A. Peterson (Co. I)		.70 acs of Sect 2 S.E. 1/4 of N.W. 1/4			70											
Ralph E. & Casselyle Radson (Co. J)		.70 acs of Sect 2 N.E. 1/4 of N.W. 1/4			70											
Harry M. & Alice A. Peterson (Co. K)		.70 acs of Sect 2 N.W. 1/4 of N.W. 1/4			70											
Walter L. & Wilhelmine Horn (Co. L)		.70 acs of Sect 2 S.W. 1/4 of N.W. 1/4			70											
" " (Co. M)		.70 acs of Sect 2 S.W. 1/4 of N.W. 1/4			70											
Olof Sjornstad		2.33 acs of Sect 2 S.E. 1/4 of S.W. 1/4			233											

11 83

SOLD FOR TAXES	VALUATIONS BY SCHOOL DISTRICTS AS EQUALIZED BY DEPARTMENT OF TAXATION						Tax including State Homestead	State Tax on Non-Homestead	SPECIAL TAXES	TOTAL TAXES	PAID	WHEN PAID	Number of Receipt	March Settlement 1956	June Settlement 1956	Penalty	November Settlement 1956	Penalty	Collections to First Monday in January 1957	Penalty	Delinquent on First Monday in January 1957	Total Delinquent Tax and Penalty	REMARKS
	District No.	District No.	District No.	District No.	District No.	District No.																	
1							1984	50		2034	1	PAID IN FULL MAY 31 1956	8818		2034								
2							1456			1456	2											1456	
3							202	06		208	3	PAID IN FULL MAY 31 1956	8917		208								
4							1428	38		1516	4	PAID IN FULL MAY 31 1956	8915		1516								
5							364	10		374	5	PAID IN FULL MAY 31 1956	8817		374								
6							870	22		892	6	PAID IN FULL MAY 31 1956	8811		892								
7							162	04		166	7	PAID IN FULL MAY 31 1956	8817		166								
8							122	02		124	8	PAID IN FULL MAY 31 1956	8817		124								
9							80	02		82	9	PAID IN FULL MAY 31 1956	8813		82								
10							80	02		82	10	PAID IN FULL MAY 31 1956	8816		82								
11							122	02		124	11	PAID IN FULL MAY 31 1956	8813		124								
12							1214	32		1246	12	PAID IN FULL MAY 31 1956	8814		1246								
13							80	02		82	13	PAID IN FULL MAY 31 1956											
14							182	04		186	14	PAID IN FULL MAY 31 1956	8817		186								

722 415

81 8376 176

8572

9116

1456

Village of Sylvan North Sylvan Parkenton's Sylvan Parkenton's Land & Albert's 1st

Assessment Roll and Tax List of Real Property in the Town of Sylvan, Cass County, Minnesota, for Taxes for the Year 1955.

Cass County, Minnesota, for Taxes for the Year 1955.

IN WHOSE NAME ASSESSED	TO WHOM TRANSFERRED	DESCRIPTION OF PROPERTY	Acres	No. School District	Indicate Homestead	Indicate Agricultural	Indicate Property	TRUE AND FULL VALUATIONS			ASSESSED VALUATIONS					FINAL EQUALIZED VALUE		
								LAND Exclusive of Structures and Improvements	BUILDINGS and Other Structures	MACHINERY Permanently Attached to Real Estate	RURAL		ALL OTHER		MACHINERY Permanently Attached to Real Estate		TOTAL ASSESSED VALUE	Total Assessed Value as Equalized by the Board of Review
											Homestead Up to \$4,000 20%	Over \$4,000 and Non-Homestead 33 1/3%	Homestead Up to \$4,000 25%	Over \$4,000 and Non-Homestead 40%				
		NE 1/4 of NE 1/4	33.133	29														
		NW 1/4 of NE 1/4		29														
Hardy Lake Camp Assn Inc.		Lot 6 less 278' x 389' x 266.7' x 466.7' SW 1/4 of NE 1/4	39.18	29														
Olle Peterson		SE 1/4 of NE 1/4 Lot 7	35.85	29														
A. J. Staub		Part of Lot 10 11 of Hardy Lake and 1/2 of NW 1/4 of Lot 10	1.90	29														
Olle Peterson		NE 1/4 of NW 1/4	40	29														
		NW 1/4 of NW 1/4 Lot 3	39.75	29														
John B. Ferris		278' x 389' x 266.7' x 466.7' of Lot 6 less SW 1/4 of NE 1/4 33 1/3% assessment	2.42	29														
Olle Peterson		SE 1/4 of NW 1/4 Lot 5	56.30	29														
Gordon K. Rasmussen		E 200' of NW 1/4 of Lot 7	2	29														
Alger Ludd Peterson		Lot 9 less 400' in S E. Cor.	35.75	29														
Morris G. Rasmussen		W. 200' in S E. Cor. of Lot 9 NW 1/4 of SW 1/4	2	29														
Gordon K. Rasmussen		590' in N. E. Cor. of Lot 10 less SW 1/4 of SW 1/4 1.9 acre	4	29														
A. J. + Ethel Staub		Lot 10 less Revere tract less 6.9 SW 1/4 of SW 1/4 less NW 1/4 E. Cor.	20	29														
L. H. Rasmussen		1 ac. in NE. Cor. of Lot 10	1	29														
L. H. Rasmussen W. S. Anne Rasmussen		NE 1/4 of SE 1/4 Lot 8	17.35	29														
Olle Peterson 1/2 int. Adolph Staub 1/2 int.		NW 1/4 of SE 1/4	40	29														
Gordon Rasmussen		SW 1/4 of SE 1/4 Lot 11	25.50	29														
		SE 1/4 of SE 1/4 Lot 12	18.75	29														
Lewis J. Miller		Approp. 1/2 less of Lot 12	12	29														
			293.75															

SOLD FOR TAXES	VALUATIONS BY SCHOOL DISTRICTS AS EQUALIZED BY DEPARTMENT OF TAXATION						Tax including State Homestead	State Tax on Non-Homestead	SPECIAL TAXES	TOTAL TAXES	PAID	WHEN PAID	Number of Receipt	March Settlement 1956	June Settlement 1956	Penalty	November Settlement 1956	Penalty	Collections to First Monday in January 1957	Penalty	Delinquent on First Monday in January 1957	Total Delinquent Tax and Penalty	REMARKS
	District No.	District Rate	District No.	District Rate	District No.	District Rate																	
	Dollars	Dollars	Dollars	Dollars	Dollars	Dollars																	
SOLD FOR TAXES	22						446		446													446 491	
SOLD FOR TAXES	2						40		40														
SOLD FOR TAXES	56						1134		1134													1134 1247	
SOLD FOR TAXES	71						1436		1436													1436 1580	
SOLD FOR TAXES	55						1112	28	1140													1140 1140	
SOLD FOR TAXES	361						7306		7306													7306 8037	
SOLD FOR TAXES	7						142		142													142	
SOLD FOR TAXES	60						1214	32	1246													1246	
SOLD FOR TAXES	60						1214	32	1246													1246	
SOLD FOR TAXES	29						586		586													586	
SOLD FOR TAXES	24						486		486													486	
SOLD FOR TAXES	4						80		80													80	
SOLD FOR TAXES	31						628		628													628 16	
SOLD FOR TAXES	24						486		486													486 535	
SOLD FOR TAXES	35						708		708													708	
SOLD FOR TAXES	26						526		526													526	
SOLD FOR TAXES	28						566	14	580													580	
	692						1810	106	1916													1916	
	203																						
	895																						

133-28

133-30

133-30

133-30

133-30

133-30

133-30

133-30

133-30

133-30

Assessment Roll and Tax List of Real Property in the Town of Sylvan

Indicate Type of Property: R-Residential, C-Commercial, I-Industrial, U-Utility, F-Farm

Table with columns: IN WHOSE NAME ASSESSED, TO WHOM TRANSFERRED, DESCRIPTION OF PROPERTY, TRUE AND FULL VALUATIONS, ASSESSED VALUATIONS, FINAL EQUALIZED VALUE.

Cass County, Minnesota, for Taxes for the Year 1955.

Table with columns: VALUATIONS BY SCHOOL DISTRICTS AS EQUALIZED BY DEPARTMENT OF TAXATION, Tax including State Homestead, SPECIAL TAXES, TOTAL TAXES, PAID, WHEN PAID, Number of Receipt, March Settlement 1956, June Settlement 1956, November Settlement 1956, Collections to First Monday in January 1957, Delinquent on First Monday in January 1957, Total Delinquent Tax and Penalty, REMARKS.

133-29

133-30

Village of Sylvan

North Sylvan

Carlson's Sylvan Parkside

Land & Albert's 1st

Assessment Roll and Tax List of Real Property in the Town of Sylvan, Cass County, Minnesota, for Taxes for the Year 1955.

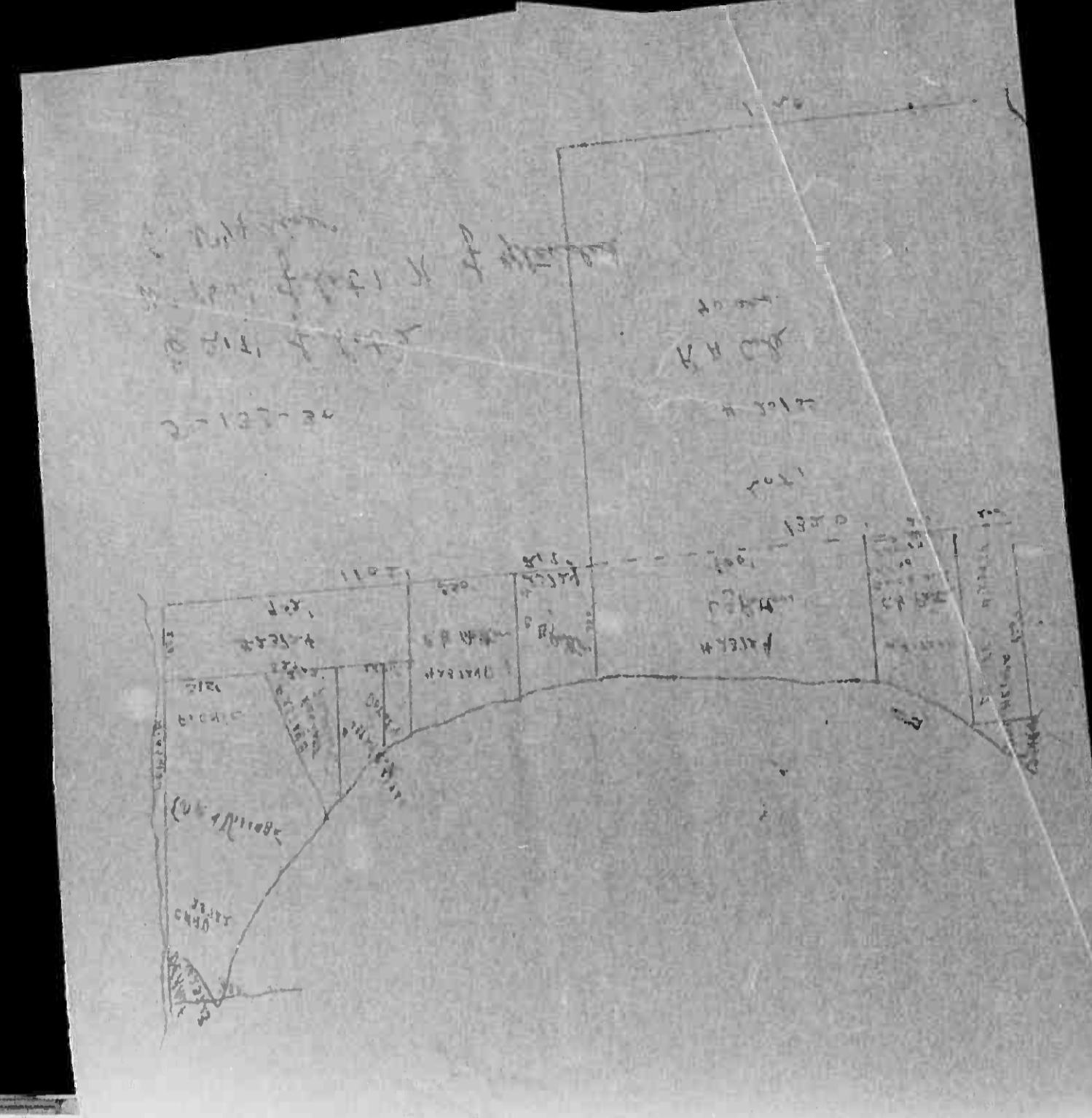


Table with columns: IN WHOSE NAME ASSESSED, TO WHOM TRANSFERRED, DESCRIPTION OF PROPERTY, TRUE AND FULL VALUATIONS, ASSESSED VALUATIONS, TOTAL ASSESSED VALUE, FINAL EQUALIZED VALUE.

Cass County, Minnesota, for Taxes for the Year 1955.

Table with columns: SOLD FOR TAXES, VALUATIONS BY SCHOOL DISTRICTS AS EQUALIZED BY DEPARTMENT OF TAXATION, SPECIAL TAXES, TOTAL TAXES, PAID, WHEN PAID, Number of Receipts, March Settlement 1955, June Settlement 1955, November Settlement 1955, Delinquent on First Monday in January 1957, Delinquent on First Monday in January 1957, Total Delinquent Tax and Penalty, REMARKS.

Assessment Roll and Tax List of Real Property in the Town of Sylvan, of Sylvan County, Minnesota

*Indicate Type of Property: R-Residential, C-Commercial, I-Industrial, U-Utility, F-Farm

Form-SCD (55) MINN. STAT. COMPART. 300.0100

Table with columns: IN WHOSE NAME ASSESSED, TO WHOM TRANSFERRED, SUBDIVISION, TRUE AND FULL VALUATIONS, ASSESSED VALUATIONS, FINAL EQUALIZED VALUE.

59293

Cass County, Minnesota, for Taxes for the Year 1955.

Table with columns: VALUATIONS BY SCHOOL DISTRICTS AS EQUALIZED BY DEPARTMENT OF TAXATION, Tax including State Homestead, State Tax on Non-Homestead, SPECIAL TAXES, TOTAL TAXES, PAID, WHEN PAID, Number of Receipt, March Settlement 1956, June Settlement 1956, November Settlement 1956, Collections to First Monday in January 1957, Delinquent on First Monday in January 1957, Total Delinquent Tax and Penalty, REMARKS.

133-29 132-29

133-30

3

4

5

6

7

Village of Sylvan

North Sylvan

Carlson's Sylvan Parkbench

Land & Alan's

Assessment Roll and Tax List of Real Property in the Town of Sylvan

Indicate Type of Property: - R-Residential, C-Commercial, I-Industrial, U-Utility, F-Farm

Table with columns: IN WHOSE NAME ASSESSED, TO WHOM TRANSFERRED, SUBDIVISION, TRUE AND FULL VALUATIONS, ASSESSED VALUATIONS, FINAL EQUALIZED VALUE. Includes handwritten entries for Arthur S. Souder, Minnesota Power & Light Co., J. P. Hanson, etc.

Cass County, Minnesota, for Taxes for the Year 1955.

Table with columns: SOLD FOR TAXES, VALUATIONS BY SCHOOL DISTRICTS AS EQUALIZED BY DEPARTMENT OF TAXATION, TAX INCLUDING STATE HOMESTEAD, SPECIAL TAXES, TOTAL TAXES, PAID, WHEN PAID, Number of Receipt, March Settlement, June Settlement, November Settlement, Collections to First Monday in January 1957, Delinquent on First Monday in January 1957, Total Delinquent Tax and Penalty, REMARKS. Includes handwritten notes like #2, #252, #491, #252 = 742 Mar, etc.

133-29 132-29

133-30

Village of Sylvan

North Sylvan

Parlyon's Sylvan Park

Land & Allen's

Assessment Roll and Tax List of Real Property in the Town of Sylvan,
Indicate Type of Property: R-Residential, C-Commercial, I-Industrial, U-Utility, F-Farm

Table with columns: IN WHOSE NAME ASSESSED, TO WHOM TRANSFERRED, SUBDIVISION, TRUE AND FULL VALUATIONS (LAND, BUILDINGS, MACHINERY, TOTAL), ASSESSED VALUATIONS (RURAL, ALL OTHER, MACHINERY, TOTAL ASSESSED), FINAL EQUALIZED VALUE. Includes handwritten entries for various property owners like Margaret M. Gerrels and Edward J. Darsley.

Cass County, Minnesota, for Taxes for the Year 1955.

Table with columns: VALUATIONS BY SCHOOL DISTRICTS AS EQUALIZED BY DEPARTMENT OF TAXATION, TAX INCLUDING STATE HOMESTEAD, STATE TAX ON NON-HOMESTEAD, SPECIAL TAXES, TOTAL TAXES, PAID, WHEN PAID, Number of Receipt, March Settlement 1956, June Settlement 1956, November Settlement 1956, Collections to First Monday in January 1957, Delinquent on First Monday in January 1957, Total Delinquent Tax and Penalty, REMARKS. Includes handwritten entries for property taxes and payments.

133-29 132-29
133-30

Village of Sylvan
North Sylvan
Carlson's Sylvan Parksidech
Lund & Albert's 1st Addn to Sylvan

Assessment Roll and Tax List of Real Property in the Town of Sylvan of Sylvan County, Minnesota, for Taxes for the Year 1955. *Indicate Type of Property: R-Residential, C-Commercial, I-Industrial, U-Utility, F-Farm

Form 300 (55) BULLOCK COMPANY, MINNEAPOLIS

Table with columns: JN WHOSE NAME ASSESSED, TO WHOM TRANSFERRED, DESCRIPTION OF PROPERTY, TRUE AND FULL VALUATIONS (RURAL, ALL OTHER, MACHINERY, TOTAL ASSESSED VALUE), and FINAL EQUALIZED VALUE.

Cass County, Minnesota, for Taxes for the Year 1955

Table with columns: VALUATIONS BY SCHOOL DISTRICTS AS EQUALIZED BY DEPARTMENT OF TAXATION, TAX INCLUDING STATE HOMESTEAD, SPECIAL TAXES, TOTAL TAXES, PAID, WHEN PAID, Number of Receipt, March Settlement, June Settlement, November Settlement, Collections to First Monday in January, Delinquent on First Monday in January, Total Delinquent Tax and Penalty, REMARKS.

133-29 193-29

133-30

Village of Sylvan

North Sylvan

Carlton's Sylvan Park

Land & Allen's 1st Addn to Sylvan

Assessment Roll and Tax List of Real Property in the Town of Sylvan,
*Indicate Type of Property: R-Residential, C-Commercial, I-Industrial, U-Utility, F-Farm

Form 502 (1955) MINN. STATE BOARD OF TAXATION

IN WHOSE NAME ASSESSED	TO WHOM TRANSFERRED	DESCRIPTION OF PROPERTY				TRUE AND FULL VALUATIONS											FINAL EQUALIZED VALUE
		SUBDIVISION	Sec. or Lot	Town or Block	Number of Acres of Land	LAND Exclusive of Structures and Improvements	BUILDINGS and Other Structures	MACHINERY Permanently Attached to Real Estate	RURAL		ALL OTHER		MACHINERY Permanently Attached to Real Estate	TOTAL ASSESSED VALUE	Total Assessed Value as Equalized by the Board of Review		
									Acres	10ths	Homestead Up to \$4,000 20%	Over \$4,000 and Non-Homestead 33 1/3%				Homestead Up to \$4,000 25%	
St. Olaf College		NE 1/4 of NE 1/4	less Reg. Pt. No. 19	133 30	30												
Jacob & Jella M. Shutt		NW 1/4 of NE 1/4	less Reg. Pt. No. 19		27 42												
St. Olaf College		SW 1/4 of NE 1/4			40												
"		SE 1/4 of NE 1/4			40												
Minnesota Power & Light Co.		19 cont. of NW 1/4 of SW 1/4	less Reg. Pt. No. 19		190												
Jacob & Jella M. Shutt		NE 1/4 of NW 1/4	less Reg. Pt. No. 19		25 59												
"		NW 1/4 of NW 1/4	less Reg. Pt. No. 19		39 14												
St. Olaf College		SW 1/4 of NW 1/4	less Reg. Pt. No. 19		44 45												
"		SE 1/4 of NW 1/4			40												
Minnesota Power & Light Co.		13.7 Ac. of NE 1/4 of SW 1/4	less Reg. Pt. No. 19		13 70												
St. Olaf College		NE 1/4 of SW 1/4	less 17.75 ac. flange rights to Minn. Power & Light Co.		22 25												
"		NW 1/4 of SW 1/4	less Reg. Pt. No. 19		50 20												
"		SW 1/4 of SW 1/4	less Reg. Pt. No. 19		52 19												
"		SE 1/4 of SW 1/4	less Reg. Pt. No. 19		26 5												
Minnesota Power & Light Co.		405 ac. of NW 1/4 of SW 1/4			405												
St. Olaf College		NE 1/4 of SE 1/4	less Reg. Pt. No. 19		32 50												
"		NW 1/4 of SE 1/4	less Reg. Pt. No. 19		32 15												
"		SW 1/4 of SE 1/4															
"		SE 1/4 of SE 1/4															
Rudie S. Anderson		19 ac. of NW 1/4 of SW 1/4	less Reg. Pt. No. 19		19												

Cass County, Minnesota, for Taxes for the Year 1955.

SOLD FOR TAXES	VALUATIONS BY SCHOOL DISTRICTS AS EQUALIZED BY DEPARTMENT OF TAXATION						Tax on State Homestead	State Tax on Non-Homestead	SPECIAL TAXES	TOTAL TAXES	PAID	WHEN PAID	Number of Receipt	March Settlement 1956	June Settlement 1956	Penalty	November Settlement 1956	Penalty	Collections to First Monday in January 1957	Penalty	Delinquent on First Monday in January 1957	Total Delinquent Tax and Penalty	REMARKS	
	District No.	District No.	District No.	District No.	District No.	District No.																		
	Rate	Rate	Rate	Rate	Rate	Rate																		
1	70						14 24	36		14 60	1 PAID IN FULL	MAY 31 1956	8733											
2	97						19 72			19 72	2 PAID IN FULL	APR 25 1956	5605											
3	80						16 26	42		16 68	3 PAID IN FULL	MAY 31 1956	8733											
4	133						27 04	68		27 72	4 PAID IN FULL	MAY 31 1956	8733											
5	5						1 02	02		1 04	5 PAID IN FULL	MAY 31 1956	10307											
6	31						6 30			6 30	6 PAID IN FULL	APR 25 1956	5605											
7	81						16 48			16 48	7 PAID IN FULL	APR 25 1956												
8	103						20 94	54		21 48	8 PAID IN FULL	MAY 31 1956	8733											
9	93						18 92	48		19 40	9 PAID IN FULL	MAY 31 1956	8733											
10	51						10 38	26		10 64	10 PAID IN FULL	MAY 31 1956	10307											
11	59						11 60	30		11 90	11 PAID IN FULL	MAY 31 1956	8733											
12	153						31 12	80		31 92	12 PAID IN FULL	MAY 31 1956	8733											
13	135						27 46	70		28 16	13 PAID IN FULL	MAY 31 1956	8733											
14	25						5 08	12		5 20	14 PAID IN FULL	MAY 31 1956	8733											
15	14						2 84	08		2 92	15 PAID IN FULL	MAY 31 1956	10307											
16	107						21 76	56		22 32	16 PAID IN FULL	MAY 31 1956	8733											
17	88						17 90	46		18 36	17 PAID IN FULL	MAY 31 1956	8733											
18																								
19																								
20	247						50 22	128		51 50	20 PAID IN FULL	MAY 31 1956	8733											
	209																							
	136.1						319 28	706		326 34														
	150																							

133-29 136-29

133-30

Village of Sylvan
North Sylvan
Sylvan's Sylvan Park
Lund & Allen's 1st Addn to Sylvan B.

Assessment Roll and Tax List of Real Property in the town of Sylvania, of Sylvania, Minnesota. *Indicate Type of Property: R-Residential, C-Commercial, I-Industrial, U-Utility, F-Farm

Table with columns: IN WHOSE NAME ASSESSED, TO WHOM TRANSFERRED, DESCRIPTION OF PROPERTY, TRUE AND FULL VALUATIONS (RURAL, ALL OTHER, MACHINERY, TOTAL ASSESSED VALUE), FINAL EQUALIZED VALUE.

Cass County, Minnesota, for Taxes for the Year 1955.

Table with columns: SOLD FOR TAXES, VALUATIONS BY SCHOOL DISTRICTS AS EQUALIZED BY DEPARTMENT OF TAXATION, Tax including State Homestead, State Tax on Non-Homestead, SPECIAL TAXES, TOTAL TAXES, PAID, WHEN PAID, Number of Receipt, March Settlement 1956, June Settlement 1956, November Settlement 1956, Collections to First Monday in January 1957, Delinquent on First Monday in January 1957, Total Delinquent Tax and Penalty, REMARKS.

133-29 133-29

133-30

Village of Sylvania

North Sylvania

Carlton's Sylvania Parkside

Lord & Allen's 1st Addn to Sylvania

Assessment Roll and Tax List of Real Property in the Town of Sylvan

*Indicate Type of Property: R-Residential, C-Commercial, I-Industrial, U-Utility, F-Farm

IN WHOSE NAME ASSESSED	TO WHOM TRANSFERRED	DESCRIPTION OF PROPERTY				No. School District	Indicate Homesteaded Yes or No	Indicate Agricultural Yes or No	Indicate Type of Property	TRUE AND FULL VALUATIONS				ASSESSED VALUATIONS					FINAL EQUALIZED VALUE			
		SUBDIVISION	Sec. of Lot	Town or Block	Range					Number of Acres of Land	LAND Exclusive of Structures and Improvements	BUILDINGS and Other Structures	MACHINERY Permanently Attached to Real Estate	TOTAL True and Full Value	RURAL		ALL OTHER			MACHINERY Permanently Attached to Real Estate	TOTAL ASSESSED VALUE	Total Assessed Value as Equalized by the Board of Review
															Acres	10ths	Homestead Up to \$1,000 20%	Over \$1,000 and Non-Homestead 33 1/3%				
Charles M. & Della D. Luttrell		Village of Sylvan																				
Chas. H. Johnson			21																			
George M. & Bernice V. Wilder			1	2																		
"			2																			
"			3																			
Jack F. & Ellen J. Marlow			4																			
"			5																			
John J. Sylvan			6																			
Charles M. & Della D. Luttrell			7																			
"			8																			
"			9																			
"			10																			
"			11																			
Geo. M. & Bernice V. Wilder			12																			
"			13																			
George M. Wilder			14																			
"			15																			
"			16																			
"			17																			
"			18																			
"			19																			
"			20																			

Cass County, Minnesota, for Taxes for the Year 1955.

SOLD FOR TAXES	VALUATIONS BY SCHOOL DISTRICTS AS EQUALIZED BY DEPARTMENT OF TAXATION						Tax including State Homestead	State Tax on Non-Homestead	SPECIAL TAXES	TOTAL TAXES	PAID	WHEN PAID	Number of Receipt	March Settlement 1955	June Settlement 1955	Penalty	November Settlement 1955	Penalty	Collections to First Monday in January 1957	Penalty	Delinquent on First Monday in January 1957	Total Delinquent Tax and Penalty	REMARKS
	District No.	District No.	District No.	District No.	District No.	District No.																	
	Rate	Rate	Rate	Rate	Rate	Rate																	
1							40		40	1 PAID IN FULL	MAY 2 1955	5645		2.28									
2							184	04	188	2 PAID IN FULL	MAY 2 1955												
3							20		20	3 PAID IN FULL	MAY 31 1956												
4							20		20	4 PAID IN FULL	MAY 31 1956	113167		60									
5							20		20	5 PAID IN FULL	MAY 31 1956												
6							40		40												40		
7							40		40												40		
8																							
9							40		40	9 PAID IN FULL	MAR 22 1955												
10							40		40	10 PAID IN FULL	MAR 22 1955	4695		7.65									
11							672	16	688	11 PAID IN FULL	MAR 22 1955												
12							20		20	12 PAID IN FULL	MAY 31 1956	113167		1769									
13							1748		1748	13 PAID IN FULL	MAY 31 1956												
14							20		20	14 PAID IN FULL	MAY 31 1956												
15							20		20	15 PAID IN FULL	MAY 31 1956	113167		60									
16							20		20	16 PAID IN FULL	MAY 31 1956												
17																							
18																							
19																							
20																							
							2844	20	2964					2884							80		

133-29 132-29

133-30

Village of Sylvan

Sylvan Shady Shores

North Sylvan

Carlton's Sylvan Park

Land & Allen's 1st Add'n to Sylvan P.

Assessment Roll and Tax List of Real Property in the Town of Sylvan,
*Indicate Type of Property: R-Residential, C-Commercial, I-Industrial, U-Utility, F-Farm

IN WHOSE NAME ASSESSED	TO WHOM TRANSFERRED	DESCRIPTION OF PROPERTY	No. School District	Indicate Homestead Tax or No	Indicate Agricultural Tax or No	Indicate Type of Property	TRUE AND FULL VALUATIONS			ASSESSED VALUATIONS					Total Assessed Value as Equalized by the Board of Review	FINAL EQUALIZED VALUE	
							LAND Exclusive of Structures and Improvements	BUILDINGS and Other Structures	MACHINERY Permanently Attached to Real Estate	RURAL		ALL OTHER		MACHINERY Permanently Attached to Real Estate			TOTAL ASSESSED VALUE
										Homestead Up to \$4,000 20%	Over \$4,000 and Non-Homestead 33 1/3%	Homestead Up to \$4,000 25%	Over \$4,000 and Non-Homestead 40%				
Frieda A. Carlson		1-133-30, 1-133-29, 1-133-28, 1-133-27, 1-133-26, 1-133-25, 1-133-24, 1-133-23, 1-133-22, 1-133-21, 1-133-20, 1-133-19, 1-133-18, 1-133-17, 1-133-16, 1-133-15, 1-133-14, 1-133-13, 1-133-12, 1-133-11, 1-133-10, 1-133-9, 1-133-8, 1-133-7, 1-133-6, 1-133-5, 1-133-4, 1-133-3, 1-133-2, 1-133-1	29														
Frieda A. Carlson		1	29														
"		2	"														
"		3	"														
"		4	"														
Anna M. Gay		5	"														
Jane Gray Thielens		6	"														
Irene M. Hudson		7	"														
Raymond & Rodenwald		8	"														
Harriet A. & Helen F. Rodenwald		9	"														
Malcolm C. & Grace W. Anderson		10	"														
John A. Peterson		11	"														
John F. & Thelma M. Jagers		12	"														
"		13	"														
Frieda A. Carlson		14	"														
Mary L. Schmidt		15	"														
Frieda A. Carlson		16	"														
John J. & Ernest L. Simonitech		17	"														
Margaret A. Carlson		18	"														
Jeannette F. Carlson		19	"														
Robert F. Sweet		20	"														

Cass County, Minnesota, for Taxes for the Year 1955.

SOLD FOR TAXES	VALUATIONS BY SCHOOL DISTRICTS AS EQUALIZED BY DEPARTMENT OF TAXATION						Tax including State Homestead	State Tax on Non-Homestead	SPECIAL TAXES	TOTAL TAXES	PAID	WHEN PAID	Number of Receipt	March Settlement 1956	June Settlement 1956	Penalty	November Settlement 1956	Penalty	Collections to First Monday in January 1957	Penalty	Delinquent on First Monday in January 1957	Total Delinquent Tax and Penalty	REMARKS	
	District No.	District No.	District No.	District No.	District No.	District No.																		
	Rate	Rate	Rate	Rate	Rate	Rate																		
1											1 PAID IN FULL	MAY 31 1956												
2											2 PAID IN FULL	MAY 31 1956												
3											3 PAID IN FULL	MAY 31 1956	8881											
4											4 PAID IN FULL	MAY 31 1956												
5											5 PAID IN FULL	MAY 31 1956	8866											
6											6 PAID IN FULL	MAY 31 1956	8865											
7											7 PAID IN FULL	MAY 31 1956	8861											
8											8 PAID IN FULL	MAY 31 1956	8859											
9											9													
10											10 PAID IN FULL	JAN 13 1956	132	2336										
11											11 PAID IN FULL	MAY 31 1956	8867											
12											12 PAID IN FULL	MAY 31 1956	8863											
13											13 PAID IN FULL	MAY 31 1956												
14	OLD FOR TAXES										14 PAID IN FULL	MAY 31 1956												
15											15 PAID IN FULL	MAY 31 1956	8881											
16											16 PAID IN FULL	MAY 31 1956												
17											17 PAID IN FULL	MAY 31 1956												
18											18 PAID IN FULL	MAY 31 1956												
19											19 PAID IN FULL	MAR 24 1956	5199											
20											20 PAID IN FULL	APR 10 1956	5306											

133-29 133-28

133-30

Carlson's Sylvan Park North Sylvan

Sylvan Shady Shores

Land & Allen's 2nd Add'n to Sylvan Beach

Sylvan Beach

Land & Allen's 1st Add'n to Sylvan Beach

Assessment Roll and Tax List of Real Property in the Town of Sylvan,
*Indicate Type of Property: R-Residential, C-Commercial, I-Industrial, U-Utility, F-Farm

Cass County, Minnesota, for Taxes for the Year 1955.

IN WHOSE NAME ASSESSED	TO WHOM TRANSFERRED	DESCRIPTION OF PROPERTY				TRUE AND FULL VALUATIONS										FINAL EQUALIZED VALUE		
		SUBDIVISION	Sec. Lot	Town or Block	Rug	Number of Acres of Land	LAND Exclusive of Structures and Improvements	BUILDINGS and Other Structures	MACHINERY Permanently Attached to Real Estate	TOTAL True and Full Value	RURAL		ALL OTHER		MACHINERY Permanently Attached to Real Estate		TOTAL ASSESSED VALUE	Total Assessed Value as Equalized by the Board of Review
											Homestead Up to \$4,000 20%	Over \$4,000 and Non-Homestead 33 1/3%	Homestead Up to \$4,000 25%	Over \$4,000 and Non-Homestead 40%				
Chas. B. & Mabel M. Woodhouse		Carlyon's Sylvan Park	48															
"	"	"	49															
"	"	"	50															
"	"	"	51															
"	"	"	52															
Elmer P. Canier		"	53															
Dan & Mary Michalski		"	54															
Geo. M. & Bernice J. Wilder		"	55															
State of Minnesota		"	56															
State of Minnesota		"	57															
State of Minnesota		"	58															
Charles M. & Della D. Luttrell		"	59															
State of Minnesota		"	60															
State of Minnesota		"	61															
State of Minnesota		"	62															
State of Minnesota		"	63															
State of Minnesota		"	64															
State of Minnesota		"	65															

SOLD FOR TAXES	VALUATIONS BY SCHOOL DISTRICTS AS EQUALIZED BY DEPARTMENT OF TAXATION						Tax including State Homestead	State Tax on Non-Homestead	SPECIAL TAXES	TOTAL TAXES	PAID	WHEN PAID	Number of Receipt	March Settlement 1956	June Settlement 1956	November Settlement 1956	Collections to First Monday in January 1957	Delinquent on First Monday in January 1957	Total Delinquent Tax and Penalty	REMARKS
	District No.	District No.	District No.	District No.	District No.	District No.														
	Rate	Rate	Rate	Rate	Rate	Rate														
1						8	182	04	186	1	PAID IN FULL	MAY 31 1956								
2						8	182	04	186	2	PAID IN FULL	MAY 31 1956	8795	9.80						
3						8	182	04	186	3	PAID IN FULL	MAY 31 1956								
4						8	182	04	186	4	PAID IN FULL	MAY 31 1956								
5						8	182	04	186	5	PAID IN FULL	MAY 31 1956								
6						108	2466	56	2522	6	PAID IN FULL	MAY 31 1956	8857	25.22						
7						50	1142	26	1168	7	PAID IN FULL	FEB 28 1956	3193	11.68						
8						183	4128	94	4272	8	PAID IN FULL	MAY 31 1956	13167	42.72						
9										9										
10										10										
11										11										
12	SOLD FOR TAXES					7	160	04	164	12	PAID IN FULL	MAY 31 1956	5647	1.64						
13										13										
14										14										
15										15										
16										16										
17										17										
18										18										
19										19										
20										20										
							318		8856	200		90.56		11.68	7888					

133-29 132-29

133-30

Village of Sylvan
Carlyon's Sylvan Park North Sylvan

Sylvan Shady Shores

Land & Allen's 2nd Add'n to Sylvan Beach

Sylvan Beach

Land & Allen's 1st Add'n to Sylvan Beach

Assessment Roll and Tax List of Real Property in the Town of Sylvan, Minnesota

Cass County, Minnesota, for Taxes for the Year 1955.

Table with columns: IN WHOSE NAME ASSESSED, TO WHOM TRANSFERRED, SUBDIVISION, TRUE AND FULL VALUATIONS (LAND, BUILDINGS, MACHINERY, TOTAL), ASSESSED VALUATIONS (RURAL, ALL OTHER, MACHINERY, TOTAL), Total Assessed Value, FINAL EQUALIZED VALUE.

Table with columns: SOLD FOR TAXES, VALUATIONS BY SCHOOL DISTRICTS AS EQUALIZED BY DEPARTMENT OF TAXATION, Tax including State Homestead, State Tax on Non-Homestead, SPECIAL TAXES, TOTAL TAXES, PAID, WHEN PAID, Number of Receipt, March Settlement 1956, June Settlement 1956, Penalty, November Settlement 1956, Penalty, Collections to First Monday in January 1957, Penalty, Delinquent on First Monday in January 1957, Total Delinquent Tax and Penalty, REMARKS.

133-29 82-29 Village of Sylvan, 133-30 81-30 Sylvan Park North Sylvan, Sylvan Beach, Sylvan Beach, Land & Allen's 1st Add'n to Sylvan Beach

Sylvan Shady Shores, Land & Allen's 2nd Add'n to Sylvan Beach, Land & Allen's 3rd Add'n to Sylvan Beach

Assessment Roll and Tax List of Real Property in the Town of Sylvan of Cass County, Minnesota, for Taxes for the Year 1955. *Indicate Type of Property: R - Residential, C - Commercial, I - Industrial, U - Utility, F - Farm

133-29 132-29 Village of Sylvan Sylvan Shady Shores
133-30 Sylvan Park North Sylvan Sylvan Beach
Land & Allen's 1st Add'n to Sylvan Beach
Land & Allen's 2nd Add'n to Sylvan Beach
Land & Allen's 3rd Add'n to Sylvan Beach

Table with columns: IN WHOSE NAME ASSESSED, TO WHOM TRANSFERRED, SUBDIVISION, DESCRIPTION OF PROPERTY, TRUE AND FULL VALUATIONS (LAND, BUILDINGS, MACHINERY, TOTAL), ASSESSED VALUATIONS (RURAL, ALL OTHER, MACHINERY, TOTAL ASSESSED), FINAL EQUALIZED VALUE.

Cass County, Minnesota, for Taxes for the Year 1955.

Table with columns: SOLD FOR TAXES, VALUATIONS BY SCHOOL DISTRICTS AS EQUALIZED BY DEPARTMENT OF TAXATION, Tax including State Homestead, State Tax on Non-Homestead, SPECIAL TAXES, TOTAL TAXES, PAID, WHEN PAID, Number of Receipt, March Settlement, June Settlement, November Settlement, Collections to First Monday in January 1957, Delinquent on First Monday in January 1957, Total Delinquent Tax and Penalty, REMARKS.

Assessment Roll and Tax List of Real Property in the Town of Sylvan of Sullivan

*Indicate Type of Property: R-Residential, C-Commercial, I-Industrial, U-Utility, F-Farm

Table with columns: IN WHOSE NAME ASSESSED, TO WHOM TRANSFERRED, SUBDIVISION, Sec. or Lot, Town or Block, No. of Acres of Land, TRUE AND FULL VALUATIONS (LAND, BUILDINGS, MACHINERY, TOTAL), ASSESSED VALUATIONS (RURAL, ALL OTHER, MACHINERY, TOTAL), Total Assessed Value, FINAL EQUALIZED VALUE.

Cass County, Minnesota, for Taxes for the Year 1955.

Table with columns: SOLD FOR TAXES, VALUATIONS BY SCHOOL DISTRICTS AS EQUALIZED BY DEPARTMENT OF TAXATION (District No., Rate, Mills), Tax including State Homestead, State Tax on Non-Homestead, SPECIAL TAXES, TOTAL TAXES, PAID, WHEN PAID, Number of Receipt, March Settlement, June Settlement, Penalty, November Settlement, Collections to First Monday in January 1957, Delinquent on First Monday in January 1957, Total Delinquent Tax and Penalty, REMARKS.

133-29 132-29 Village of Sylvan Sylvan Shady Shores
133-30 Sylvan Park North Sylvan
Sylvan Beach
Land & Allen's 1st Addn. to Sylvan Beach

Land & Allen's 2nd Addn. to Sylvan Beach
Land & Allen's 3rd Addn. to Sylvan Beach

Assessment Roll and Tax List of Real Property in the Town of Sylvan, Minnesota

*Indicate Type of Property: R-Residential, C-Commercial, I-Industrial, U-Utility, F-Farm

Table with columns: IN WHOSE NAME ASSESSED, TO WHOM TRANSFERRED, SUBDIVISION, Sec. or Lot, Town or Block, Range, Number of Acres of Land, No. School District, Indicate Homestead, Indicate Agricultural, Indicate Type of Property, TRUER AND FULL VALUATIONS (LAND, BUILDINGS, MACHINERY, TOTAL), ASSESSED VALUATIONS (RURAL, ALL OTHER, MACHINERY, TOTAL), Total Assessed Value as Equalized by the Board of Review, FINAL EQUALIZED VALUE.

Cass County, Minnesota, for Taxes for the Year 1955.

Table with columns: VALUATIONS BY SCHOOL DISTRICTS AS EQUALIZED BY DEPARTMENT OF TAXATION (District No., Rate, Mills), Tax including State Homestead, State Tax on Non-Homestead, SPECIAL TAXES, TOTAL TAXES, PAID, WHEN PAID (Month, Day, Year), Number of Receipt, March Settlement 1956, June Settlement 1956, Penalty, November Settlement 1956, Penalty, Collections to First Monday in January 1957, Penalty, Delinquent on First Monday in January 1957, Total Delinquent Tax and Penalty, REMARKS.

133-29 132-29 Village of Sylvan Sylvan Shady Shores
133-30 Sylvan Park North Sylvan Land & Allen's 2nd Add'n to Sylvan Beach
Sylvan Beach
Land & Allen's 1st Add'n to Sylvan Beach

Land & Allen's 3rd Add'n to Sylvan Beach

Assessment Roll and Tax List of Real Property in the Town of Sylvan, Cass County, Minnesota, for Taxes for the Year 1955.

Table with columns: IN WHOSE NAME ASSESSED, TO WHOM TRANSFERRED, SUBDIVISION, TRUE AND FULL VALUATIONS (LAND, BUILDINGS, MACHINERY, TOTAL), ASSESSED VALUATIONS (RURAL, ALL OTHER, MACHINERY, TOTAL), FINAL EQUALIZED VALUE.

Cass County, Minnesota, for Taxes for the Year 1955.

Table with columns: VALUATIONS BY SCHOOL DISTRICTS AS EQUALIZED BY DEPARTMENT OF TAXATION, SOLD FOR TAXES, PAID, WHEN PAID, Number of Receipt, March Settlement, June Settlement, Penalty, November Settlement, Collections to First Monday in January, Delinquent on First Monday in January, Total Delinquent Tax and Penalty, REMARKS.

133-29 133-30 Sylvan Shady Shores Sylvan Park North Sylvan Land & Allen's 2nd Add'n to Sylvan Beach Sylvan Beach Sylvan Beach & Allen's 3rd Add'n to Sylvan Beach

Assessment Roll and Tax List of Real Property in the _____ of _____, Minnesota. *Indicate Type of Property: R-Residential, C-Commercial, I-Industrial, U-Utility, F-Farm

Form 66C (55) SELLER DATA COMPANY, MINNEAPOLIS

Table with columns: IN WHOSE NAME ASSESSED, TO WHOM TRANSFERRED, DESCRIPTION OF PROPERTY, TRUE AND FULL VALUATIONS, ASSESSED VALUATIONS, SOLD FOR TAXES, FINAL EQUALIZED VALUE.

Cass County, Minnesota, for Taxes for the Year 1955.

Table with columns: VALUATIONS BY SCHOOL DISTRICTS AS EQUALIZED BY DEPARTMENT OF TAXATION, Tax including State Homestead, State Tax on Non-Homestead, SPECIAL TAXES, TOTAL TAXES, PAID, WHEN PAID, Number of Receipt, March Settlement 1956, June Settlement 1956, Penalty, November Settlement 1956, Collections to First Monday in January 1957, Delinquent on First Monday in January 1957, Total Delinquent Tax and Penalty, REMARKS.

Handwritten notes: No 1, No 2, No 1, No 2

Handwritten calculations: Grand Totals # 2659 1492 - 885 18476, 7* 7800 = 2790 41209 47193 = 11912, 10464 3722 41227 48078 = 371599

Handwritten number: 61488

Vertical text on the left edge: 133-29, 133-30, Sylvan Shady Shores, Sylvan Park North Sylvan, Land & Allen's 2nd Add'n to Sylvan Beach, Sylvan Beach, Land & Allen's 3rd Add'n to Sylvan Beach