

ASSESSMENT & TAX LIST

Sylvan

1953

Assessment of

NAME OF OWNER

COLLECTIONS OF TAXES OF 1953

Town

OF Sylvan

CASS COUNTY, MINNESOTA

FUNDS	MARCH SETTLEMENT 1953	JUNE SETTLEMENT 1953	NOV. SETTLEMENT 1953	Amount Collected from Nov. 1953 to First Monday in Jan. 1954	REDUCTIONS	Total Reductions and Collected	BALANCE UNCOLLECTED	ADDITIONS	Total Uncollected to First Monday in January, 1954
State - Non-Homestead	3310	4146	22475	60					
State - Homestead	4153	28439	29925	225					
County Revenue	22259	222250	160393	1205					
County Road and Bridge	12506	124868	90115	677					
County Welfare	39136	396757	286328	2151					
County Bond and Interest	8408	83752	60587	455					
A. + B. sinking	1573	15907	11335	85					
Town Revenue	1054	10523	7574	57					
Town Road and Bridge	10540	105235	75746	577					
Town Drag	787	7853	5668	43					
Town State Loan									
School Local 1 Mill	786	7853	5668	43					
School Special	25996	210826	196889	1187					
School State Loan									
Deficiency	22022	219993	158693	1192					
Tuition									
Transportation	1574	15707	11335	85					
C. O.	7865	78533	56676	426					
#1 Debt	42	5289	1392	43					
	162647	1575144	1180819	8453					

	LOCAL 1 MILL	SPECIAL	STATE LOAN	Deficiency	Transport.	C. O.	#1 Debt	TOTALS
MARCH SETTLEMENT	512	12807		14344	1025	5723		33811
School District No. (1) A-29-152	182	9120		5707	365	1824		16598
(2) A-29-152	21	522		585	42	209	21	4400
(2) A-29-152	77	3547		1986	142	709	71	6526
Totals	786	25996		22022	1574	7865	92	58335
JUNE SETTLEMENT	2557	63929		71601	5114	25572		168773
School District No. (1) A-29-152	88	416		233	17	93		757
(2) A-29-152	4717	117914		132063	9433	47165	4717	316009
(2) A-29-152	571	28547		15986	1143	5713	571	52561
Totals	7853	210826		219893	15707	78533	5288	538100
NOVEMBER SETTLEMENT	2282	57052		63898	4564	22821		150617
School District No. (1) A-29-152	1994	99696		55830	3988	19939		181447
(2) A-29-152	1194	29840		33420	2387	11936	1194	79971
(2) A-29-152	199	9701		5545	396	1990	199	18218
Totals	5668	196489		158693	11335	56676	1392	430253
NOVEMBER to JANUARY	38	942		1055	75	377	38	2525
School District No. (2) A-29-152	85	245		137	10	49	85	451
Totals	43	1187		1192	85	426	43	2976
ADDITIONS								
Totals								
REDUCTIONS								
Totals								

Carl Lynn's Sylvan Park
 Land & Allen's 1st
 Add'n. to Sylvan Park

Assessment Roll and Tax List of Real Property in the town of Sylvan

Form 317(53) (2-1-53)

IN WHOSE NAME ASSESSED	TO WHOM TRANSFERRED	DESCRIPTION OF PROPERTY		TRUE AND FULL VALUATIONS				ASSESSED VALUATIONS					FINAL EQUALIZED VALUE		
		Subdivision	Sec. or Lot, Town or Block, Range	Number of Acres of Land	LAND Exclusive of Structures and Improvements	BUILDINGS and Other Structures	MACHINERY Permanently Attached to Real Estate	TOTAL True and Full Value	RURAL		ALL OTHER			MACHINERY Permanently Attached to Real Estate	TOTAL ASSESSED VALUE
Minnesota Power Light Co Ray Carmichael		1	20 acs of NE 1/4 of NE 1/4	17 133 29 20	710										
		2	1/4 ac of NW 1/4 of NE 1/4		25										
		3	SW 1/4 of NE 1/4												
		4	SE 1/4 of NE 1/4												
Hans A. & Family J. Sundall Harry Seckler		5	515 acs of NE 1/4 of NW 1/4 of NE 1/4		375										
		6	20 acs of NE 1/4 of NW 1/4 Sec 12.4 acs by		760										
		7	NW 1/4 of NW 1/4												
State of Minnesota		8	SW 1/4 of NW 1/4												
		9	SE 1/4 of NW 1/4												
		10	NE 1/4 of NW 1/4												
		11	NW 1/4 of SW 1/4												
		12	SW 1/4 of SW 1/4												
		13	SE 1/4 of SW 1/4												
		14	NE 1/4 of SE 1/4												
		15	NW 1/4 of SE 1/4												
Gull River Cemetery Ass'n		16	200 sq ft of NW 1/4 of NW 1/4 Exempt												
		17	NE 1/4 of SE 1/4												
		18	NW 1/4 of SE 1/4												
		19	SW 1/4 of SE 1/4												

3160

Cass County, Minnesota, for Taxes for the Year 1953.

SOLD FOR TAXES	VALUATIONS BY SCHOOL DISTRICTS AS EQUALIZED BY DEPARTMENT OF TAXATION						Tax including State Homestead	State Tax on Non-Homestead	SPECIAL TAXES	TOTAL TAXES	PAID	WHEN PAID	Number of Receipts	March Settlement 1954	June Settlement 1954	November Settlement 1954	Penalty	Collections to First Monday in January 1955	Penalty	Delinquent on First Monday in January 1955	Total Delinquent Tax and Penalty	REMARKS
	District No.	District No.	District No.	District No.	District No.	District No.																
1							1134	28		1162	1	2nd Half Paid										
2							28	02		80	2	1st Half Paid										
3											3											
4											4											
5							618			618	5	PAID IN FULL	OCT 30 1954									
6							1662			1662	6	PAID IN FULL	MAY 31 1954									
7											7											
8											8											
9											9											
10											10											
11											11											
12											12											
13											13											
14											14											
15											15											
16											16											
17											17											
18											18											
19											19											
20											20											

$\$ 85 = 118$
 $\$ 62 = 67$
 $\$ 147 = 175$
 $712 \times 618 = 2874$
 $30 = 3522$
 3492

2243 1199

Village of Sylvan

Cass County, Minnesota

Land & Allen's List Add'n. to Sylvan Park

Assessment Roll and Tax List of Real Property in the Town of Sylvan

Cass County, Minnesota, for Taxes for the Year 1953.

IN WHOSE NAME ASSESSED	TO WHOM TRANSFERRED	DESCRIPTION OF PROPERTY				TRUE AND FULL VALUATIONS				ASSESSED VALUATIONS					FINAL EQUALIZED VALUE		
		SUBDIVISION	Sec. or Lot	Town or Block	No. of Acres of Land	LAND Exclusive of Structures and Improvements	BUILDINGS and Other Structures	MACHINERY Permanently Attached to Real Estate	TOTAL True and Full Value	RURAL		ALL OTHER		MACHINERY Permanently Attached to Real Estate		TOTAL ASSESSED VALUE	Total Assessed Value as Equalized by the Board of Review
										Up to \$4,000 20%	Over \$4,000 and Non-Homestead 33 1/3%	Homestead Up to \$4,000 25%	Over \$4,000 and Non-Homestead 40%				
Adolph Ethel Staub		NE 1/4 of NE 1/4	29	133	29	40											
Dewey Mc Main		NW 1/4 of NE 1/4			40												
"		SW 1/4 of NE 1/4			40												
Adolph Staub		SE 1/4 of NE 1/4			40												
"																	
N.W. Paper Co.		NE 1/4 of NW 1/4			40												
"		NW 1/4 of NW 1/4			40												
"		SW 1/4 of NW 1/4			40												
"		SE 1/4 of NW 1/4			40												
"																	
Ladie Pierce		NE 1/4 of SW 1/4 Lot 2			33	50											
"		NW 1/4 of SW 1/4 Lot 3			44	85											
"		SW 1/4 of SW 1/4															
"		SE 1/4 of SW 1/4															
"																	
John E. Division & Eastman		NE 1/4 of SE 1/4			40												
"		NW 1/4 of SE 1/4 Lot 5			42	48											
"		SW 1/4 of SE 1/4															
"		SE 1/4 of SE 1/4 Lot 1			22	10											
					582	45											

SOLD FOR TAXES	VALUATIONS BY SCHOOL DISTRICTS AS EQUALIZED BY DEPARTMENT OF TAXATION						Tax Including State Homestead	State Tax on Non-Homestead	SPECIAL TAXES	TOTAL TAXES	PAID	WHEN PAID	Number of Receipt	March Settlement 1954	June Settlement 1954	Penalty	November Settlement 1954	Penalty	Collection to First Monday in January 1955	Penalty	Delinquent on First Monday in January 1955	Total Delinquent Tax and Penalty	REMARKS
	District No.	District No.	District No.	District No.	District No.	District No.																	
	Rate	Rate	Rate	Rate	Rate	Rate																	
1																							
2																							
3																							
4																							
5																							
6																							
7																							
8																							
9																							
10																							
11																							
12																							
13																							
14																							
15																							
16																							
17																							
18																							
19																							
20																							

Land & Allen's 1st Add'n. to Sylvan Park

Assessment Roll and Tax List of Real Property in the Town of Sylvan

Cass County, Minnesota, for Taxes for the Year 1953.

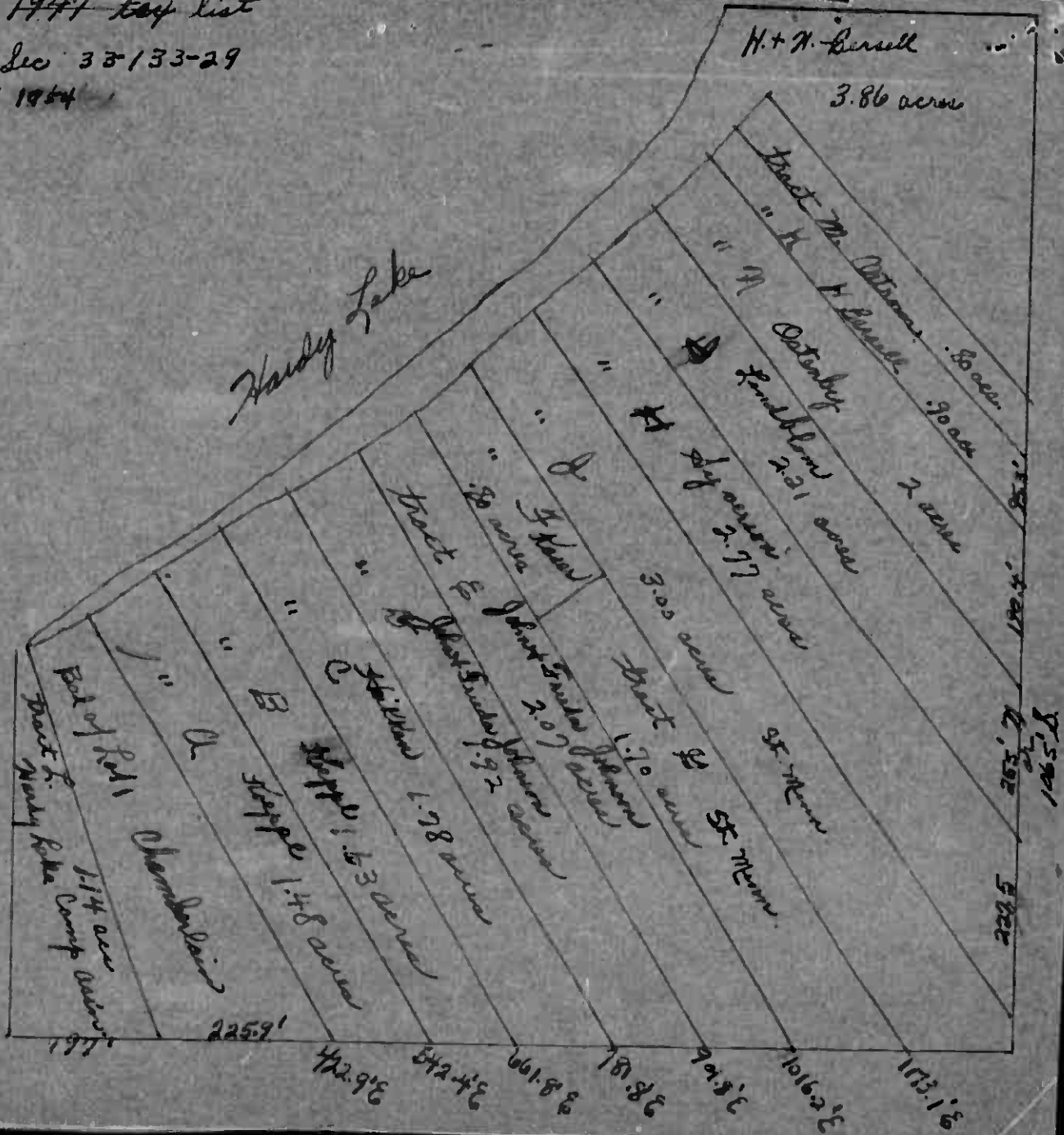
IN WHOSE NAME ASSESSED	TO WHOM TRANSFERRED	DESCRIPTION OF PROPERTY				TRUE AND FULL VALUATIONS				ASSESSED VALUATIONS						FINAL EQUALIZED VALUE	
		SUBDIVISION	Sec. or Lot	Town or Block	Number of Acres of Land	LAND Exclusive of Structures and Improvements	BUILDINGS and Other Structures	MACHINERY Permanently Attached to Real Estate	TOTAL True and Full Value	RURAL		ALL OTHER		MACHINERY Permanently Attached to Real Estate	TOTAL ASSESSED VALUE		Total Assessed Value as Equalized by the Board of Review
										Homestead Up to \$4,000 20%	Over \$4,000 and Non-Homestead 33 1/3%	Homestead Up to \$4,000 25%	Over \$4,000 and Non-Homestead 40%				
State of Minnesota		part of 1/2 of NE 1/4			30 133 29												
Minnesota Power & Light Co.		NW 1/4 of NE 1/4			40												
"		SW 1/4 of NE 1/4 Lot 3			28 75												
Eug. J. Hilda & Runaway		SW 1/4 of NE 1/4			14 25												
Minnesota Power & Light Co.		NE 1/4 of NW 1/4 Lot 2			48												
"		NW 1/4 of NW 1/4															
"		NW 1/4 of NW 1/4 Lot 5			35 25												
"		SE 1/4 of NW 1/4 Lot 4			15												
		NE 1/4 of SW 1/4															
		NW 1/4 of SW 1/4															
		SW 1/4 of SW 1/4															
		SE 1/4 of SW 1/4															
Ladie Pierce		NE 1/4 of SE 1/4 Lot 9			34 75												
"		NW 1/4 of SE 1/4															
"		SW 1/4 of SE 1/4															
"		SE 1/4 of SE 1/4 Lot 10			17												
State of Minnesota		Lot 3			32 133 29												

SOLD FOR TAXES	VALUATIONS BY SCHOOL DISTRICTS AS EQUALIZED BY DEPARTMENT OF TAXATION						Tax Including State Homestead	State Tax on Non-Homestead	SPECIAL TAXES	TOTAL TAXES	PAID	WHEN PAID	Number of Receipt	March Settlement 1954	June Settlement 1954	November Settlement 1954	Collections to First Monday in January 1955	Delinquent on First Monday in January 1955	Total Delinquent Tax and Penalty	REMARKS
	District No.	District No.	District No.	District No.	District No.	District No.														
	Rate	Rate	Rate	Rate	Rate	Rate														
	1	2	3	4	5	6														
		162					3150	76	3226		1st Half Paid OCT 30 1954	15703		1613		10 13				
		41327					803520	19258	822778		2nd Half Paid MAY 31 1954	13148		411389		411389				
		38					738	18	756		3rd Half Paid MAY 31 1954	7244		756						
		176					3422	82	3504		4th Half Paid OCT 30 1954			1752		1752				
		764					2994	72	3066		5th Half Paid OCT 30 1954	15104		1533		1533				
		66					1284	30	1314		6th Half Paid OCT 30 1954	13149		657		657				
		453					1030		1030		7th Half Paid MAY 31 1954	8727		1030						
		483					1614		1614		8th Half Paid MAY 31 1954	8727		1614						
		4136					817752	19536	837288					420344		416944				

11 Page of Sylvan Park
North Sylvan
Cass County's Sylvan Park
Land & Allen's 1st Add'n. to Sylvan Park

1947 tax list

Plot Sec 33-133-29
checked OK 1964



Assessment Roll and Tax List of Real Property in the Town of Sylvan

DESCRIPTION OF PROPERTY

TRUE AND FULL VALUATIONS

ASSESSED VALUATIONS

IN WHOSE NAME ASSESSED	TO WHOM TRANSFERRED	SUBDIVISION	Sec. or Lot	Town or Block	Number of Acres of Land	No. School District	Indicate Homestead Tax or No	Indicate Agricultural Tax or No	TRUE AND FULL VALUATIONS					ASSESSED VALUATIONS					FINAL EQUALIZED VALUE	
									LAND Exclusive of Structures and Improvements	BUILDINGS and Other Structures	MACHINERY Permanently Attached to Real Estate	TOTAL True and Full Value	RURAL		ALL OTHER		MACHINERY Permanently Attached to Real Estate 33 1/3 %	TOTAL ASSESSED VALUE		Total Assessed Value as Equalized by the Board of Review
													Homestead Up to \$4,000 20%	Over \$4,000 and Non-Homestead 33 1/3 %	Homestead Up to \$4,000 25%	Over \$4,000 and Non-Homestead 40%				
Allison H. & Esther L. Nixon (tract)		SE 1/4 of Lot 2	33	133	29	85														
Walter B. & Wilhelmine H. Harve	(u. B.)	SW 1/4 of Lot 2	55			55														
Olaf Bjornstad	(u. M.)	SW 1/4 of Lot 2	65			65														
Ralph E. & Carmelite Anderson	(u. D.)	SE 1/4 of Lot 2	70			70														
Olaf Bjornstad	(u. E.)	SE 1/4 of Lot 2	75			75														
German Kolmquist	(u. F.)	NE 1/4 of Lot 2	70			70														
Olaf Bjornstad	(u. G.)	NE 1/4 of Lot 2	1			1														
Harris M. & Alice A. Petrom	(u. H.)	SW 1/4 of Lot 2	75			75														
Clifford & Margaret Hammer	(u. I.)	SE 1/4 of Lot 2	70			70														
Ralph E. & Carmelite Anderson	(u. J.)	SE 1/4 of Lot 2	70			70														
David & Signe Anderson	(u. K.)	NE 1/4 of Lot 2	75			75														
Walter B. & Wilhelmine Harve	(u. L.)	SW 1/4 of Lot 2	70			70														
Olaf Bjornstad		Balance of Lot 2	2	33		2	33													

88 83

Cass County, Minnesota, for Taxes for the Year 1953.

SOLD FOR TAXES	VALUATIONS BY SCHOOL DISTRICTS AS EQUALIZED BY DEPARTMENT OF TAXATION						Tax including State Homestead	State Tax on Non-Homestead	SPECIAL TAXES	TOTAL TAXES	PAID	WHEN PAID	Number of Receipts	March Settlement 1954	June Settlement 1954	November Settlement 1954	Penalty	Collections to First Monday in January 1955	Penalty	Delinquent on First Monday in January 1955	Total Delinquent Tax and Penalty	REMARKS
	District No.	District No.	District No.	District No.	District No.	District No.																
	Rate	Rate	Rate	Rate	Rate	Rate																
1	108						21 00	50	21 50	1	PAID IN FULL	MAY 21 1954	6940									
2	79						15 36		15 36	2												
3	31						2 14	06	2 20	3	PAID IN FULL	MAY 31 1954	7242									
4	80						15 56	38	15 94	4	PAID IN FULL	MAY 8 1954	7748									
5	20						3 88	18	3 98	5	PAID IN FULL	MAY 3 1954	7747									
6	48						9 34	22	9 56	6	PAID IN FULL	MAY 3 1954	7751									
7	9						9 74	04	1 78	7	PAID IN FULL	MAY 3 1954	7742									
8	7						1 36	04	1 40	8	PAID IN FULL	MAY 3 1954										
9	4						7 8	02	8 0	9	PAID IN FULL	MAY 3 1954	8730									
10	4						7 8	02	8 0	10	PAID IN FULL	MAY 3 1954	7748									
11	6						1 16	02	1 18	11	PAID IN FULL	MAY 3 1954	8729									
12	66						12 84	30	13 14	12	PAID IN FULL	MAY 3 1954	7758									
13	4						7 8	02	8 0	13	PAID IN FULL	MAY 3 1954										
14	20						3 88	18	3 98	14	PAID IN FULL	MAY 3 1954	7747									
15										15												
16										16												
17										17												
18										18												
19										19												
20										20												

79 388 468

9060 182

9242

7706

18736

Village of Sylvan
Cass County, Minnesota
Cass County's Sylvan Park
Land & Allen's 1st Add'n. to Sylvan Park

1952 Tax List

Scale 1" = 200'
Govt Lot 2, Sec 33-133-29

This map drawn from
Reg of Deeds records
3-9-53

Checked 1954-OK

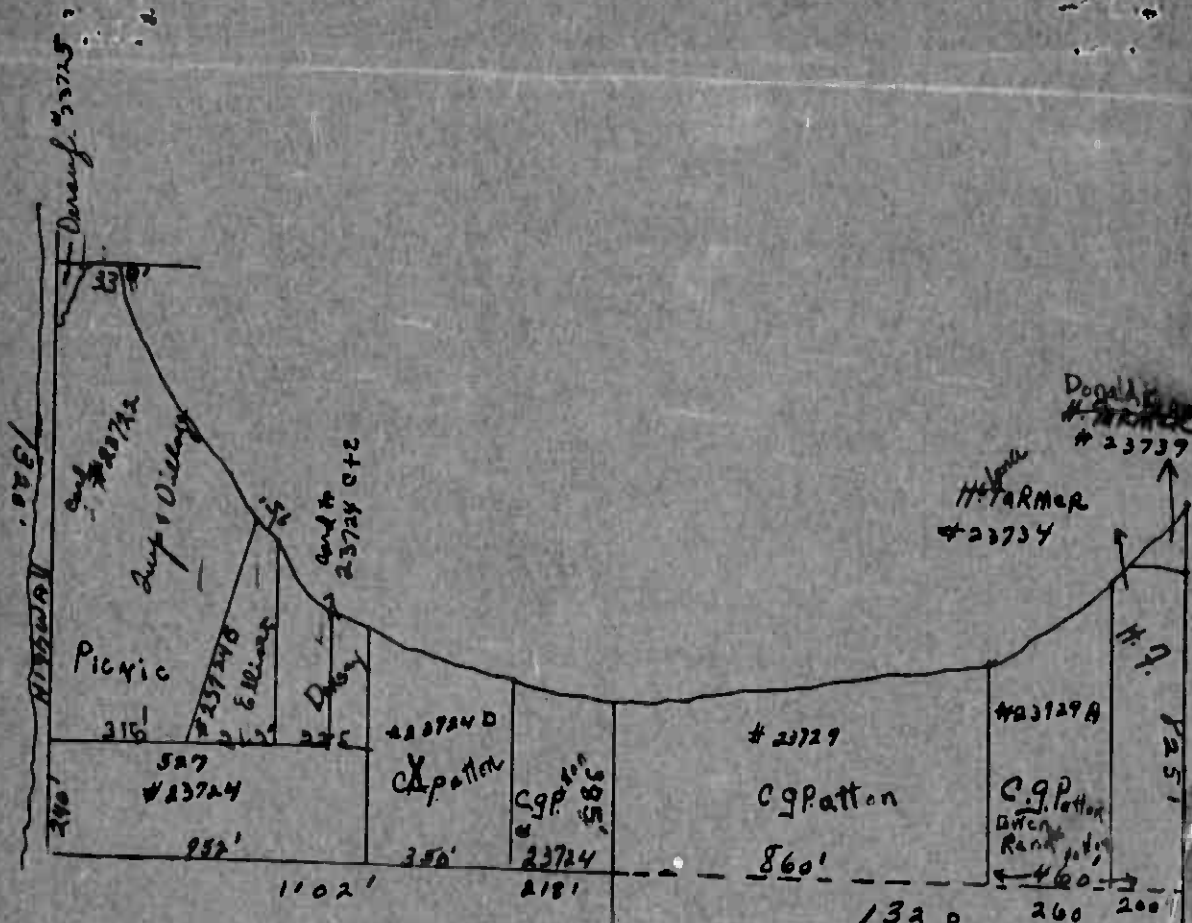


- A- Nixon
- B- Horn
- C- Horn
- D- R. Anderson
- E- Bjornstad
- F- Halmquist
- G- Bjornstad
- H- Bjornstad
- I- Ostrom
- J- RE & C. Anderson
- K- B. Anderson
- L- Horn
- M- Bjornstad

11.83 ac
3.02 ac road

IN WHOSE NAME ASSESSED	TO WHOM TRANSFERRED	DESCRIPTION OF PROPERTY					TRUE AND FULL VALUATIONS				ASSESSED VALUATIONS					SOLD FOR TAXES	VALUATIONS BY SCHOOL DISTRICTS AS EQUALIZED BY DEPARTMENT OF TAXATION						SPECIAL TAXES	TOTAL TAXES	PAID	WHEN PAID	Number of Receipt	March Settlement 1954	June Settlement 1954	Penalty	November Settlement 1954	Penalty	Collections to First Monday in January 1955	Penalty	Delinquent on First Monday in January 1955	Total Delinquent Tax and Penalty	REMARKS											
		Subdivision	Sec of Lot	Town or Block	Ring	Number of Acres of Land	LAND Exclusive of Structures and Improvements	BUILDINGS and Other Structures	MACHINERY Permanently Attached to Real Estate	TOTAL True and Full Value	RURAL Homestead 20% Over \$4,000 and Non-Homestead 33 1/3%	ALL OTHER Homestead 25% Over \$4,000 and Non-Homestead 40%	MACHINERY Permanently Attached to Real Estate 33 1/3%	TOTAL ASSESSED VALUE	Total Assessed Value as Equalized by the Board of Review		District No. Rate	District No. Rate	District No. Rate	District No. Rate	District No. Rate	District No. Rate																Tax Including State Homestead	State Tax on Non-Homestead	Month	Day	Year	\$	cts.	\$	cts.	\$	cts.
Lyle & Rosalie Dohell		S 1/2 of NW 1/4 of Lot 4	7	3330	3260				185				185		1	62	1212	28			1240	1																										
Allen & Ethel Rogers		NE 1/4 of NW 1/4 Lot 1	4	1330	3759				70				70		2	41	802	20			822	2	PAID IN FULL	MAY 5 1954	5687		822																					
Harold A. Barscy	Donald B. Farmer	NW 1/4 of NW 1/4 Lot 2			40				230				230		3	43	840	20			860	3																										
Allen & Ethel Rogers		SW 1/4 of NE 1/4			40				70				70		4	77	1508	36			1540	4																										
Thos L. McNeil Horn		S 1/2 of N 1/2 of Lot 4							110				110		5	127	2482	60			2542	5	PAID IN FULL	MAY 31 1954	7758		2542																					
Harold A. Barscy	Donald B. Farmer	NE 1/4 of NW 1/4 Lot 3			3758				40				40		6	54	1056	26			1082	6	PAID IN FULL	MAY 5 1954	5687		1082																					
Ruffard L. Sila & Patton		S 1/2 of NW 1/4 of Lot 4			1260				1738				1738		7	158	1388	32			1400	7	PAID IN FULL	MAY 5 1954	5687		1400																					
Donald R. Farmer		SW 1/4 of NW 1/4 Lot 5			660				40				40		8	46	898	22			920	8	PAID IN FULL	MAY 5 1954	5687		920																					
Harold A. Barscy	Donald R. Farmer	SE 1/4 of NW 1/4			40				44				44		9	44	860	20			880	9	PAID IN FULL	MAY 5 1954	5687		880																					
Helen A. Farmer		S 660' of Lot 5			20				132				132		10	132	2580	62			2642	10	2nd Half Paid	OCT 30 1954	1688		1321																					
Allen & Ethel E. Rogers		NE 1/4 of SW 1/4			40				60				60		11	60	1172	28			1200	11																										
Harold A. Barscy		NW 1/4 of SW 1/4			40				60				60		12	60	1172	28			1200	12																										
Allen & Ethel E. Rogers		SW 1/4 of SW 1/4			40				70				70		13	44	860	20			880	13																										
W.R. Clara & McGuire		SE 1/4 of SW 1/4			40				197				197		14	197	3850	92			3942	14																										
Lesslie E. & Rose M. Pietry		N 100' of Lot 4			110				37				37		15	37	724	18			742	15	2nd Half Paid	OCT 30 1954	14583		371																					
Allen & Ethel E. Rogers		NE 1/4 of SE 1/4			40				26				26		16	26	508	18			508	16	1st Half Paid	MAY 24 1954	7215		508																					
Allen & Ethel E. Rogers		NW 1/4 of SE 1/4			40				85				85		17	85	1662	40			1702	17																										
Allen & Ethel E. Rogers		SW 1/4 of SE 1/4			40				127				127		18	127	2482	60			2542	18																										
Lesslie E. & Rose M. Pietry		SE 1/4 of SE 1/4			40				95				95		19	95	1856	40			1856	19	2nd Half Paid	OCT 30 1954	14620		928																					
Cary L. McClay		S 1/2 of N 1/2 of Lot 4			160				90				90		20	90	1758	42			1800	20	1st Half Paid	JUL 21 1954	11242		928																					
					6751				1454				1454			1605	31366	694			32062						8278		15456																			

Page of Sylvan
North Sylvan
Carlyon's Sylvan Park
Land & Allen's 1st Addn. to Sylvan Park



~~R.G. Patton has made left?~~

5-133-30

E 218' of Lot 2
 W. 860' of Lot 1 n of extended
 E+W 1/4 line

checked - 1954

1320

Assessment Roll and Tax List of Real Property in the South of Sylvania

Cass County, Minnesota, for Taxes for the Year 1953.

IN WHOSE NAME ASSESSED	TO WHOM TRANSFERRED	DESCRIPTION OF PROPERTY					TRUE AND FULL VALUATIONS				ASSESSED VALUATIONS					FINAL EQUALIZED VALUE	SOLD FOR TAXES	VALUATIONS BY SCHOOL DISTRICTS AS EQUALIZED BY DEPARTMENT OF TAXATION						SPECIAL TAXES	TOTAL TAXES	PAID	WHEN PAID	Number of Receipt	March Settlement 1954	June Settlement 1954	Penalty	November Settlement 1954	Penalty	Collections to First Monday in January 1955	Delinquent on First Monday in January 1955	Total Delinquent Tax and Penalty	REMARKS		
		SUBDIVISION	Sec. or Lot	Town or Block	Number of Acres of Land	Indicate Homestead Yes or No	LAND Exclusive of Structures and Improvements	BUILDINGS and Other Structures	MACHINERY Permanently Attached to Real Estate	TOTAL True and Full Value	RURAL Over \$4,000 Homestead 20%	Over \$4,000 and Non-Homestead 33 1/8%	ALL OTHER Homestead 25%	Over \$4,000 and Non-Homestead 40%	MACHINERY Permanently Attached to Real Estate 33 1/8%			TOTAL ASSESSED VALUE	District No. & Rate	District No. & Rate	District No. & Rate	District No. & Rate	District No. & Rate															District No. & Rate	Tax Including State Homestead
Frank L. Collett	George Wilson (cont. to Delbert Mann)	NE 1/4 of NE 1/4	Lot 1	6.133	30	37	76	Yes								1	77																						
State of Minnesota	Delbert Mann	NW 1/4 of NE 1/4	Lot 2	39	25			No								2	58																						
Delbert S. Mann		SW 1/4 of NE 1/4	Lot 3	39	50			Yes								3	56																						
Geo. & Ruth E. Hill		SE 1/4 of NE 1/4		40												4	59																						
Geo. Hill		NE 1/4 of NW 1/4	Lot 5	61												5																							
Geo. Hill	Delbert S. Mann	NW 1/4 of NW 1/4	Lot 6	49												6	62																						
Delbert S. Mann		SE 1/4 of NW 1/4	Lot 4	35	50											7	65																						
Geo. Hill		NE 1/4 of SW 1/4		40												8	26																						
Delbert S. Mann		SW 1/4 of SW 1/4	Lot 7	47	39											9	89																						
H.D. Steutz		SE 1/4 of SW 1/4	Lot 8	45	53											10	59																						
State of Minnesota		SE 1/4 of SW 1/4		40												11	40																						
Jack Barnett		NE 1/4 of SE 1/4		40												12	35																						
George Wilson		NW 1/4 of SE 1/4		40												13	69																						
Arno & Clara L. Rossler		SW 1/4 of SE 1/4		40												14	51																						
		SE 1/4 of SE 1/4		40												15	48																						
				592	13											16	78																						
																17	52																						
																18	792																						
																19	154																						
																20	78																						
																	78																						
																24	154																						
																	78																						
																	154																						
																	78																						
																	78																						
																	154																						
																	78																						
																	78																						
																	78																						
																	78																						
																	78																						
																	78																						
																	78																						
																	78																						
																	78																						
																	78																						
																	78																						
																	78																						
																	78																						

Village of Sylvania
 North Sylvania
 Carlsson's Sylvania Park
 Land & Allen's 1st Add'n. to Sylvania Park

Assessment Roll and Tax List of Real Property in the Laurie of Sylvan

IN WHOSE NAME ASSESSED	TO WHOM TRANSFERRED	DESCRIPTION OF PROPERTY			TRUE AND FULL VALUATIONS										FINAL EQUALIZED VALUE		
		SUBDIVISION	Sec. of Lot	Town or Block	Number of Acres of Land	LAND Exclusive of Structures and Improvements	BUILDINGS and Other Structures	MACHINERY Permanently Attached to Real Estate	TOTAL True and Full Value	RURAL		ALL OTHER		MACHINERY Permanently Attached to Real Estate		TOTAL ASSESSED VALUE	Total Assessed Value as Equalized by the Board of Review
										Acres	100ths	Homestead Up to \$4,000 20%	Over \$4,000 and Non-Homestead 33 1/3%				
<i>Arno + Clara Rasmussen</i>		NE 1/4 of NE 1/4			7133.30	40											
"		W 1/2 of NE 1/4				40											
<i>O. A. + Erna Berndt</i>		HW 1/2 of NE 1/4				40											
"		SE 1/4 of NE 1/4				40											
<i>William + Flossie Mann</i>		NE 1/4 of NW 1/4				40											
"		2 E. 24.72 acs. of NW 1/4 of Lot 1				24.72											
"		SW 1/4 of NW 1/4				44.96											
"		SE 1/4 of NW 1/4				40											
<i>Anna J. Whipple</i>		W. 20 acs. of Lot 2				20											
<i>Arnold Berndt</i>		NE 1/4 of SW 1/4				40											
"		NW 1/4 of SW 1/4 Lot 3				45.21											
"		SW 1/4 of SW 1/4 Lot 4				45.47											
"		SE 1/4 of SW 1/4				40											
<i>Wesley + Emma Peck</i>		NE 1/4 of SE 1/4				40											
"		NW 1/4 of SE 1/4				40											
"		SW 1/4 of SE 1/4				40											
<i>Milford W. Wright</i>		W 1/2 of SE 1/4 of SE 1/4				20											
<i>Daniel D. Phillips</i>		E 1/2 of SE 1/4 of SE 1/4				20											
						6100 B6											

Cass County, Minnesota, for Taxes for the Year 1953.

SOLD FOR TAXES	VALUATIONS BY SCHOOL DISTRICTS AS EQUALIZED BY DEPARTMENT OF TAXATION						Tax Including State Homestead	State Tax on Non-Homestead	SPECIAL TAXES	TOTAL TAXES	PAID	WHEN PAID	Number of Receipts	March Settlement 1954	June Settlement 1954	November Settlement 1954	Penalty	Collected to First Monday in January 1955	Penalty	Delinquent on First Monday in January 1955	Total Delinquent Tax and Penalty	REMARKS	
	District No.	District No.	District No.	District No.	District No.	District No.																	
	Rate	Rate	Rate	Rate	Rate	Rate																	
1																							
2																							
3																							
4																							
5																							
6																							
7																							
8																							
9																							
10																							
11																							
12																							
13																							
14																							
15																							
16																							
17																							
18																							
19																							
20																							

Village of Sylvan
North Sylvan
Carlton's Sylvan Park
Land & Allen's 1st Add'n. to Sylvan Park

Assessment Roll and Tax List of Real Property in the Town of Sylvan

Form 507 (53) JULY-1953 EDITION, MINNAPOLIS

Table with columns: IN WHOSE NAME ASSESSED, TO WHOM TRANSFERRED, DESCRIPTION OF PROPERTY, TRUE AND FULL VALUATIONS, ASSESSED VALUATIONS, FINAL EQUALIZED VALUE. Includes handwritten entries for St. Olaf College, Minnesota Power Light Co, and Candice B. Anderson.

Cass County, Minnesota, for Taxes for the Year 1953.

Table with columns: SOLD FOR TAXES, VALUATIONS BY SCHOOL DISTRICTS AS EQUALIZED BY DEPARTMENT OF TAXATION, Tax including State Homestead, State Tax on Non-Homestead, SPECIAL TAXES, TOTAL TAXES, PAID, WHEN PAID, Number of Receipt, March Settlement 1954, June Settlement 1954, Penalty, November Settlement 1954, Collections to First Monday in January 1955, Delinquent on First Monday in January 1955, Total Delinquent Tax and Penalty, REMARKS. Includes handwritten entries for 1-20.

Vertical text on the right edge: Village of Sylvan, North Sylvan, Carleton's Sylvan Park, Land & Allen's 1st Add'l. to Sylvan Park

Assessment Roll and Tax List of Real Property in the Town of Sylvan

Form 50 (53)

DESCRIPTION OF PROPERTY

TRUE AND FULL VALUATIONS

ASSESSED VALUATIONS

IN WHOSE NAME ASSESSED	TO WHOM TRANSFERRED	SUBDIVISION	Sec. or Lot	Town or Block	Reg.	Number of Acres of Land	Acres	Indicate Homestead or Agricultural Use	Indicate Agricultural Use	TRUE AND FULL VALUATIONS			ASSESSED VALUATIONS					FINAL EQUALIZED VALUE		
										LAND Exclusive of Structures and Improvements	BUILDINGS and Other Structures	MACHINERY Permanently Attached to Real Estate	TOTAL True and Full Value	RURAL		ALL OTHER			MACHINERY Permanently Attached to Real Estate	TOTAL ASSESSED VALUE
								Dollars	Dollars	Dollars	Dollars	Homestead Up to \$4,000 20%	Over \$4,000 and Non-Homestead 33 1/3%	Homestead Up to \$4,000 25%	Over \$4,000 and Non-Homestead 40%	Dollars	Dollars			
		<u>Sylvan Beach</u>																		
	<u>Geo. M. + Bernice Wilder</u>		1	1																
	<u>Carl L. + Hazel Bondeson</u>		3																	
	<u>Max Scheliot</u>		5																	
	<u>Max D. Scheliot</u>		6																	
	<u>Leonard E. + Clarence J. Purpus</u>		7																	
			8																	
			9																	
			10																	
			11																	
			12																	
			13																	
	<u>Arthur E. + Katherine Bondeson</u>		14																	
			15																	
			16																	
			17																	
			18																	
			19																	
			20																	

Cass County, Minnesota, for Taxes for the Year 1953.

SOLD FOR TAXES	VALUATIONS BY SCHOOL DISTRICTS AS EQUALIZED BY DEPARTMENT OF TAXATION						Tax Including State Homestead	State Tax on Non-Homestead	SPECIAL TAXES	TOTAL TAXES	PAID	WHEN PAID	Number of Receipt	March Settlement 1954	June Settlement 1954	Penalty	November Settlement 1954	Penalty	Collections to First Monday in January 1955	Penalty	Delinquent on First Monday in January 1955	Total Delinquent Tax and Penalty	REMARKS
	District No.	District No.	District No.	District No.	District No.	District No.																	
1							214	06		220	1 PAID IN FULL	MAY 13 1954	5303		220								
2							214	06		220	2 PAID IN FULL	MAY 13 1954			220								
3							1408	34		1442	3 PAID IN FULL	MAY 31 1954	7764		1442								
4							332	08		340	4 PAID IN FULL	MAY 31 1954			340								
5							860	20		880	5 PAID IN FULL	MAY 31 1954	8765		1000								
6							118	02		120	6 PAID IN FULL	MAY 31 1954											
7							118	02		120	7 PAID IN FULL	MAY 31 1954											
8							156	04		160	8 PAID IN FULL	MAY 31 1954											
9							156	04		160	9 PAID IN FULL	MAY 31 1954											
10							156	04		160	10 PAID IN FULL	MAY 31 1954	7767		1240								
11							156	04		160	11 PAID IN FULL	MAY 31 1954											
12							156	04		160	12 PAID IN FULL	MAY 31 1954											
13							156	04		160	13 PAID IN FULL	MAY 31 1954											
14							156	04		160	14 PAID IN FULL	MAY 31 1954											
15							156	04		160	15 PAID IN FULL	MAY 31 1954											
16							156	04		160	16 PAID IN FULL	MAY 31 1954	8714		2362								
17							156	04		160	17 PAID IN FULL	MAY 31 1954											
18							1838	44		1882	18 PAID IN FULL	MAY 31 1954											
19																							
20																							
							341			6662	162		6824		4824								

Sylvan Stady Str... Land & Allen's 3 Add'n. to Sylvan Add'n. to Sylvan Park

Assessment Roll and Tax List of Real Property in the Town of Sylvan

Cass County, Minnesota, for Taxes for the Year 1953.

Form 50 (53)

DESCRIPTION OF PROPERTY

TRUE AND FULL VALUATIONS

ASSESSED VALUATIONS

VALUATIONS BY SCHOOL DISTRICTS AS EQUALIZED BY DEPARTMENT OF TAXATION

IN WHOSE NAME ASSESSED	TO WHOM TRANSFERRED	SUBDIVISION	Sec. of Lot	Town or Block	Reg.	Number of Acres of Land	No. School District	1st-4th Dist. or No.	1st-4th Dist. or No.	TRUE AND FULL VALUATIONS					TOTAL ASSESSED VALUE	Total Assessed Value as Equalized by the Board of Review	FINAL EQUALIZED VALUE	SOLD FOR TAXES	VALUATIONS BY SCHOOL DISTRICTS AS EQUALIZED BY DEPARTMENT OF TAXATION						SPECIAL TAXES	TOTAL TAXES	PAID	WHEN PAID	Number of Receipts	March Settlement 1954	June Settlement 1954	November Settlement 1954	Penalty	Collections to First Monday in January 1955	Penalty	Delinquent on First Monday in January 1955	Total Delinquent Tax and Penalty	REMARKS											
										LAND Exclusive of Structures and Improvements	BUILDINGS and Other Structures	MACHINERY Permanently Attached to Real Estate	RURAL						ALL OTHER		MACHINERY Permanently Attached to Real Estate	TOTAL ASSESSED VALUE	District No.	District No.															District No.	District No.	District No.	District No.	District No.	District No.	District No.	District No.			
													Dollars	Dollars					Dollars	Dollars																											Dollars	Dollars	Dollars
1	2	3	4	5	6	7	8	9	10	11	12	13	14	15	16	17	18	19	20	21	22	23	24	25	26	27	28	29	30	31	32	33	34	35	36	37	38	39	40	41	42	43	44	45	46	47	48	49	50
1	2	3	4	5	6	7	8	9	10	11	12	13	14	15	16	17	18	19	20	21	22	23	24	25	26	27	28	29	30	31	32	33	34	35	36	37	38	39	40	41	42	43	44	45	46	47	48	49	50
1	2	3	4	5	6	7	8	9	10	11	12	13	14	15	16	17	18	19	20	21	22	23	24	25	26	27	28	29	30	31	32	33	34	35	36	37	38	39	40	41	42	43	44	45	46	47	48	49	50
1	2	3	4	5	6	7	8	9	10	11	12	13	14	15	16	17	18	19	20	21	22	23	24	25	26	27	28	29	30	31	32	33	34	35	36	37	38	39	40	41	42	43	44	45	46	47	48	49	50
1	2	3	4	5	6	7	8	9	10	11	12	13	14	15	16	17	18	19	20	21	22	23	24	25	26	27	28	29	30	31	32	33	34	35	36	37	38	39	40	41	42	43	44	45	46	47	48	49	50
1	2	3	4	5	6	7	8	9	10	11	12	13	14	15	16	17	18	19	20	21	22	23	24	25	26	27	28	29	30	31	32	33	34	35	36	37	38	39	40	41	42	43	44	45	46	47	48	49	50
1	2	3	4	5	6	7	8	9	10	11	12	13	14	15	16	17	18	19	20	21	22	23	24	25	26	27	28	29	30	31	32	33	34	35	36	37	38	39	40	41	42	43	44	45	46	47	48	49	50
1	2	3	4	5	6	7	8	9	10	11	12	13	14	15	16	17	18	19	20	21	22	23	24	25	26	27	28	29	30	31	32	33	34	35	36	37	38	39	40	41	42	43	44	45	46	47	48	49	50
1	2	3	4	5	6	7	8	9	10	11	12	13	14	15	16	17	18	19	20	21	22	23	24	25	26	27	28	29	30	31	32	33	34	35	36	37	38	39	40	41	42	43	44	45	46	47	48	49	50
1	2	3	4	5	6	7	8	9	10	11	12	13	14	15	16	17	18	19	20	21	22	23	24	25	26	27	28	29	30	31	32	33	34	35	36	37	38	39	40	41	42	43	44	45	46	47	48	49	50
1	2	3	4	5	6	7	8	9	10	11	12	13	14	15	16	17	18	19	20	21	22	23	24	25	26	27	28	29	30	31	32	33	34	35	36	37	38	39	40	41	42	43	44	45	46	47	48	49	50
1	2	3	4	5	6	7	8	9	10	11	12	13	14	15	16	17	18	19	20	21	22	23	24	25	26	27	28	29	30	31	32	33	34	35	36	37	38	39	40	41	42	43	44	45	46	47	48	49	50
1	2	3	4	5	6	7	8	9	10	11	12	13	14	15	16	17	18	19	20	21	22	23	24	25	26	27	28	29	30	31	32	33	34	35	36	37	38	39	40	41	42	43	44	45	46	47	48	49	50
1	2	3	4	5	6	7	8	9	10	11	12	13	14	15	16	17	18	19	20	21	22	23	24	25	26	27	28	29	30	31	32	33	34	35	36	37	38	39	40	41	42	43	44	45	46	47	48	49	50
1	2	3	4	5	6	7	8	9	10	11	12	13	14	15	16	17	18	19	20	21	22	23	24	25	26	27	28	29	30	31	32	33	34	35	36	37	38	39	40	41	42	43	44	45	46	47	48	49	50
1	2	3	4	5	6	7	8	9	10	11	12	13	14	15	16	17	18	19	20	21	22	23	24	25	26	27	28	29	30	31	32	33	34	35	36	37	38	39	40	41	42	43	44	45	46	47	48	49	50
1	2	3	4	5	6	7	8	9	10	11	12	13	14	15	16	17	18	19	20	21	22	23	24	25	26	27	28	29	30	31	32	33	34	35	36	37	38	39	40	41	42	43	44	45	46	47	48	49	50
1	2	3	4	5	6	7	8	9	10	11	12	13	14	15	16	17	18	19	20	21	22	23	24	25	26	27	28	29	30	31	32	33	34	35	36	37	38	39	40	41	42	43	44	45	46	47	48	49	50
1	2	3	4	5	6	7	8	9	10	11	12	13	14	15	16	17	18	19	20	21	22	23	24	25	26	27	28	29	30	31	32	33	34	35	36	37	38	39	40	41	42	43	44	45	46	47	48	49	50
1	2	3	4	5	6	7	8	9	10	11	12	13	14	15	16	17	18	19	20	21	22	23	24	25	26	27	28	29	30	31	32	33	34	35	36	37	38	39	40	41	42	43	44	45	46	47	48	49	50
1	2	3	4	5	6	7	8	9	10	11	12	13	14	15	16	17	18	19	20	21	22	23	24	25	26	27	28	29	30	31	32	33	34	35	36	37	38	39	40	41	42	43	44	45	46	47	48	49	50
1	2	3	4	5	6	7	8	9	10	11	12	13	14	15	16	17	18	19	20	21	22	23	24	25	26	27	28	29	30	31	32	33	34	35	36	37	38	39	40	41	42	43	44	45	46	47	48	49	50
1	2	3	4	5	6	7	8	9	10	11	12	13	14	15	16	17	18	19	20	21	22	23	24	25	26	27	28	29	30	31	32	33	34	35	36	37	38	39	40	41	42	43	44	45	46	47	48	49	50
1	2	3	4	5	6	7	8	9	10	11	12	13	14	15	16	17	18	19	20	21	22	23	24	25	26	27	28	29	30	31	32	33	34	35	36	37	38	39	40	41	42	43	44	45	46	47	48	49	50
1	2	3	4	5	6	7	8	9	10	11	12	13	14	15	16	17	18	19	20	21	22	23	24	25	26	27	28	29	30	31	32	33	34	35	36	37	38	39	40	41	42	43	44	45	46	47	48	49	50
1	2	3	4	5	6	7	8	9	10	11	12	13	14	15	16	17	18	19	20	21	22	23	24	25	26	27	28	29	30	31	32	33	34	35	36	37	38	39	40	41	42	43	44	45	46	47	48	49	50
1	2	3	4	5	6	7	8	9	10	11	12	13	14	15	16	17	18	19	20	21	22	23	24	25	26	27	28	29	30	31	32	33	34	35	36	37	38	39	40	41	42	43	44	45	46	47	48	49	50
1	2	3	4	5	6	7	8	9	10	11	12	13	14	15	16	17	18	19	20	21	22	23	24	25	26	27	28	29	30	31	32	33	34																

