

ASSESSMENT & TAX LIST

Sylvan

1950

Assessor's Return of Exempt Real Property in the _____ of _____ County of _____, Minnesota, for the Year 1950

FORM 2 WALKER-BATES COMPANY, MINNEAPOLIS

NAMES OF OWNERS	DESCRIPTION SUBDIVISION	Sec. or Lot	Town or Block	Range	No. of Acre	FOR WHAT PURPOSE USED	TRUE AND FULL VALUATIONS				ASSESSED VALUATIONS		REMARKS
							LAND Exclusive of Structures and Improvements Dollars	BUILDINGS and Other Structures Dollars	MACHINERY Permanently Attached to Real Estate Dollars	TOTAL True and Full Value Dollars	Rural Including Machinery 33 1/3%	All Other 40%	
	Gull River Cemetery	17	133	79	1	Cemetery							
	Hardy Lake Cemetery	33			39 1/2	Church	486	10.25		261	687		
	Twp of Sybrian					Public	40	50		90	30		
	Twp of Sybrian				130 30	P. 2. 110 grounds	60			60	20		

1177
2061
575

Real Estate
LAND & AT
LAND & AT
VILLAGE OF SYBRIAN
RTH SYBRIAN
CARLTON'S SYBRIAN PARK
SYBRIAN BEACH

Assessor's Return

FORM 2, 1951-52, CASS COUNTY, MINNESOTA

NAMES OF OWNERS

Treasurer's Office, Cass County, Minnesota

RECEIVED this, the first Monday (being the 2nd day) of January, A. D. 1951, of L. C. Peterson, Auditor of said County, Minnesota, the Tax List of all Taxable Real and Personal Property in the Town of Sylvan in said County for the year A. D. 1950, as specified above and amounting to 100 Dollars

Paul D. Jewell, F.M.R. County Treasurer.

Jan 7, 1952

Office of County Treasurer, Cass County, Minnesota

To L. C. Peterson, County Auditor:

Sir: I herewith return to you the Tax List for the Town of Sylvan in said County for the year 1950, heretofore received from you. I certify that I have compared the same with the duplicate receipts in your office, and have written opposite the amount of each tax so received the words "First Quarter Paid", "Second Quarter Paid", "Third Quarter Paid" or "Paid in full" as the case may be, and the number of my receipt given in discharge of said tax, and each tract or lot of real property against which the taxes remain unpaid is delinquent for said year.

Yours respectfully, Paul D. Jewell, F.M.R. County Treasurer.

Auditor's Office, Cass County, Minnesota

I, Auditor of said County, and State of Minnesota, do hereby certify that the following is a correct list of the Taxes levied on the Real and Personal Property in the Town of Sylvan of said County for the year 1950. IN WITNESS my hand and official seal, the 7th day of January, 1951.

(SEAL) County Auditor.

Auditor's Office, Cass County, Minnesota

I hereby certify that on the first Monday in January 1952, I received of L. C. Peterson, County Treasurer, the Tax List of the Town of Sylvan in said County for the year 1950; that I have compared the said list with the Statements received for by said Treasurer, which are on file in my office, and that each tract or lot of real property therein against which the taxes, or any part thereof, remains unpaid are delinquent for said year.

(SEAL) County Auditor.

Real Estate

LAND & APTS. BLDG. & APTS. VILLAGE OF SYLVAN ETC SYLVAN PARK SYLVAN BEACH

Assessor's Return

COLLECTIONS OF TAXES OF 1950

Town

OF Sylvan

CASS COUNTY, MINNESOTA

FUNDS	MARCH SETTLEMENT 1951	JUNE SETTLEMENT 1951	NOV. SETTLEMENT 1951	Amount Collected from Nov. 1951 to First Monday in Jan. 1952	REDUCTIONS	Total Reductions and Collected	BALANCE UNCOLLECTED	ADDITIONS	Total Uncollected to First Monday in January, 1952
State - Non-Homestead, State - Homestead.	2720 2624	23322 26873	20758 22665	123 183					
County Revenue, County Road and Bridge, County Welfare, County Bond and Interest, Pub. Exp. Ret.	16434 8665 27007 10637 255	167907 88509 275941 108684 2603	146932 88473 233253 97871 2201	832 439 1567 539 13					
Town Revenue, Town Road and Bridge, Town Drag, Town State Loan, Fire B. & Int.	1401 8663 637	14318 88509 6507	42103 74817 5507	71 437 32					
School Local 1 Mill, School Special, School State Loan, Deficiency Tuition Transportation Pub. Old Debt	636 18501 864 32936 390 1710 12431 3117	6508 199357 12215 232903 458102 19524 81435	5501 175357 9800 187674 41754 16504 65628	32 1267 30 578 416 96 202					
	150226	1399857	1182082	6609					

	SCHOOL DISTRICT NO.	LOCAL 1 MILL	SPECIAL	STATE LOAN	Pub. Old Debt	Transp.	C.P.	Deficiency	Tuition	TOTALS
MARCH SETTLEMENT	1a 17a	54 567 75	817 17013 672	163 1701	3117	163 1701 46	1090 11341	32936	290	5404 64757 1023
	Totals	636	18501	1864	3117	1910	12431	32936	290	71185
JUNE SETTLEMENT	1a 17a 13	1985 2087 2736	39775 62602 103980	5958 6260		5955 6260 7309	39750 41735	113542 149361	458102	176912 231305 161527
	Totals	6508	198357	12215		19524	81435	232903	458102	596744
NOVEMBER SETTLEMENT	1a 17a 13	1310 1971 2220	19647 57146 96566	3727 5715		3727 5715 6660	26177 39431	74922 112772	41734	129934 225158 147180
	Totals	5501	175357	9844		16504	65628	187674	41734	502264
NOVEMBER to JANUARY	17a 13	10 22	304 963	30		30 66	202	578	416	1154 1467
	Totals	32	1267	30		96	202	578	416	2621
ADDITIONS	School District No.									
	Totals									
REDUCTIONS	School District No.									
	Totals									

Real Estate

LAND & BUILDING & ALL THE VILLAGE OF SYLVAN ETHE SYLVAN CARLTON'S SYLVAN PARK SYLVAN BEACH

Assessment Roll and Tax List of Real Property in the Town of Lyman

IN WHOSE NAME ASSESSED	TO WHOM TRANSFERRED	DESCRIPTION OF PROPERTY				No. School District	Indicate Homestead or No.	Indicate Agricultural or No.	TRUE AND FULL VALUATIONS					ASSESSED VALUATIONS					FINAL EQUALIZED VALUE		
		SUBDIVISION	Sec. or Lot	Town or Block	Rng.				Number of Acres of Land	LAND Exclusive of Structures and Improvements	BUILDINGS and Other Structures	MACHINERY Permanently Attached to Real Estate	TOTAL True and Full Value	RURAL		ALL OTHER		MACHINERY Permanently Attached to Real Estate		TOTAL ASSESSED VALUE	Total Assessed Value as Equalized by the Board of Review
														Homestead Up to \$4,000 20%	Over \$4,000 and Non-Homestead 33 1/3%	Homestead Up to \$4,000 25%	Over \$4,000 and Non-Homestead 40%				
Minnesota Power & Light Co.		20 ac. of NE 1/4 of NE 1/4	17	133	39	20	1	No	174							58	58				
Ray Carmichael		1/4 ac. of NW 1/4 of NE 1/4				25			12							4	4				
		SW 1/4 of NE 1/4							12							4	4				
		SE 1/4 of NE 1/4																			
Hans A. & Emily J. Findall		5.15 ac. of E. 1/2 of NE 1/4 of NE 1/4				3	75	Yes	55	90						145	29				
John B. & Julia C. King		20 ac. of NE 1/4 of NW 1/4				7	60		65	360						425	85				
		NW 1/4 of NW 1/4							60	300						360	72				
		SW 1/4 of NW 1/4																			
		SE 1/4 of NW 1/4																			
State of Minnesota		1 acre of NW 1/4 of NE 1/4																			
		NE 1/4 of SW 1/4																			
		NW 1/4 of SW 1/4																			
		SW 1/4 of SW 1/4																			
		SE 1/4 of SW 1/4																			
Bull River Cemetery Association		202' of 226' of SW 1/4 of NW 1/4						Exempt													
		NE 1/4 of SE 1/4																			
		NW 1/4 of SE 1/4																			
		SW 1/4 of SE 1/4																			
		SE 1/4 of SE 1/4																			
						31	60		306	450					756	114	62				
									381	375					656	97	57				
																154	176				

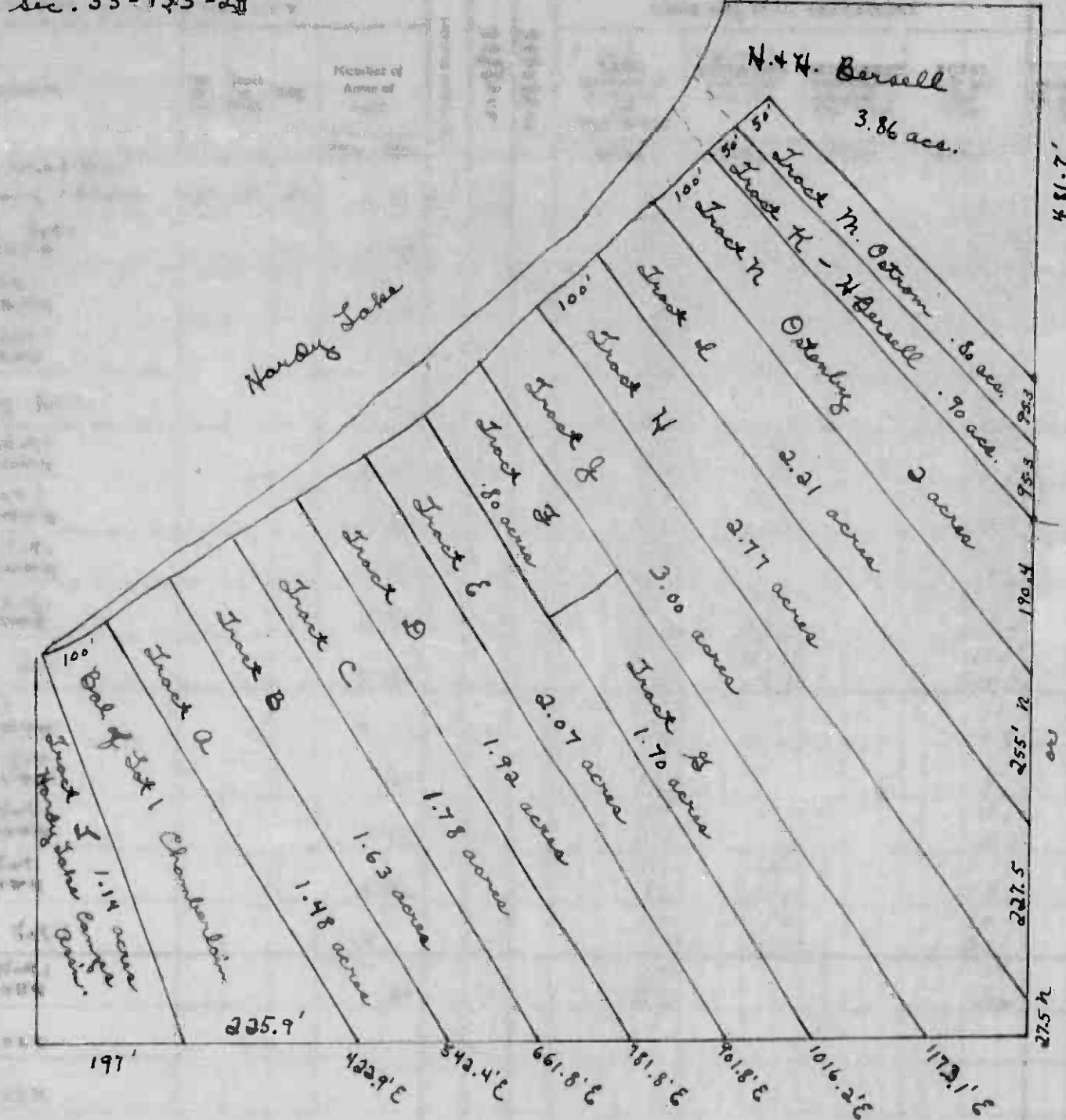
Cass County, Minnesota, for Taxes for the Year 1950.

SOLD FOR TAXES	VALUATIONS BY SCHOOL DISTRICTS AS EQUALIZED BY DEPARTMENT OF TAXATION						Tax including State Homestead	State Tax on Non-Homestead	SPECIAL TAXES	TOTAL TAXES	PAID	WHEN PAID	Number of Receipt	March Settlement 1951	June Settlement 1951	Penalty	November Settlement 1951	Penalty	Collections to First Monday in January 1952	Penalty	Delinquent on First Monday in January 1952	Total Delinquent Tax and Penalty	REMARKS
	District No.	District No.	District No.	District No.	District No.	District No.																	
	Rate	Rate	Rate	Rate	Rate	Rate																	
1							12.70	26		12.96	1	2nd Half Paid OCT 16 1951	8098										
2							81	02		70	2	1st Half Paid MAY 23 1951	7134										
3																							
4																							
5							6.78			6.78	5	PAID IN FULL OCT 10 1951	12934										
6							18.62			18.62	6	PAID IN FULL MAY 8 1951	5781										
7																							
8																							
9																							
10																							
11																							
12																							
13																							
14																							
15																							
16																							
17																							
18																							
19																							
20																							

1947 Tax List
Lot 1 Sec. 33-133-29

IN WHOSE NAME ASSESSED TO WHOM TRANSFERRED

Michael A. & Olga A. Chamberlain
 Joseph & Martha Koeppl (Tract 1)
 " " (Tract 2)
 Edward & Susan Heikonen (Tract 3)
 Edward & Elizabeth Johnson (Tract 4)
 John A. & Erika Johnson (Tract 5)
 Merrill & Inez Kaser (Tract 6)
 Wm. H. & Mary Goodwater (Tract 7)
 Julius & Anna Eyranson (Tract 8)
 Sigurd & Myra Lingje (Tract 9)
 Wm. & Mary Goodwater (Tract 10)
 Hugo & Hilda Bersell (Tract 11)
 Hardy Lake Camp Assn, Inc. (Tract 12)
 Hugo & Hilda Bersell
 Elnora & Vernon E. Osterby
 Hilding J. & Eunice E. Osterby



ASSESSED VALUATIONS

ALL OTHER	MACHINERY	TOTAL	Total Assessed	FINAL
Over \$4,000 and Non-Homestead 40%	Permanently Attached to Real Estate 33 1/3%	ASSESSED VALUE	Value as Equalized by the Board of Review	EQUALIZED VALUE
Dollars	Dollars	Dollars	Dollars	Dollars

1			87	79
2			36	42
3			13	13
4			39	45
5			15	17
6			41	48
7			41	48
8	SOLD FOR TAXES		12	13
9			63	73
10			81	90
11	SOLD FOR TAXES		23	20
12			12	13
13	SOLD FOR TAXES		7	10
14			62	72
15			67	79
16			12	13
17				
18				
19				
20				

SOLD FOR TAXES

VALUATIONS BY SCHOOL DISTRICTS AS EQUALIZED BY DEPARTMENT OF TAXATION						Tax including State Homestead	State Tax on Non-Homestead	SPECIAL TAXES	TOTAL TAXES
District No.	District No.	District No.	District No.	District No.	District No.	Rate	Rate	Rate	Rate
Mills	Mills	Mills	Mills	Mills	Mills				

1						79	14.20	34	15.04
2						42	7.82	18	8.80
3						13	2.42	06	2.48
4						45	8.38	20	8.58
5						17	3.16	08	3.24
6						48	8.94	22	9.16
7						48	8.94	22	9.16
8	SOLD FOR TAXES					13	2.42	06	2.48
9						73	13.58	32	13.90
10						95	17.68	42	18.10
11	SOLD FOR TAXES					25	4.66	12	4.78
12						13	2.42	06	2.48
13	SOLD FOR TAXES					10	1.86	04	1.90
14						72	13.70	32	13.72
15						79	14.70	34	15.04
16						13	2.42	06	2.48
17									
18									
19									
20									

PAID

WHEN PAID	Number of Receipt	March Settlement 1951	June Settlement 1951	Penalty	November Settlement 1951	Penalty	Collections to First Monday in January 1952	Penalty	Delinquent on First Monday in January 1952	Total Delinquent Tax and Penalty
Month Day Year		\$ cts.	\$ cts.	\$ cts.	\$ cts.	\$ cts.	\$ cts.	\$ cts.	\$ cts.	\$ cts.

1	PAID IN FULL	MAY 2 1951	5846							15.04
2	PAID IN FULL	MAY 17 1951	6832							8.80
3	PAID IN FULL	MAY 17 1951	6832							2.48
4	PAID IN FULL	MAY 19 1951	7346							8.58
5	PAID IN FULL	AUG 7 1951	12096			324				3.24
6	PAID IN FULL	MAY 31 1951	10126							9.16
7	PAID IN FULL	MAY 11 1951	6157							9.16
8										2.48
9	PAID IN FULL	MAY 9 1951	6028							13.90
10										18.10
11										4.78
12										2.48
13										1.90
14	PAID IN FULL	MAY 4 1951	5473							13.72
15	PAID IN FULL	APR 27 1951	4993							15.04
16	PAID IN FULL	MAY 15 1951	6722							2.48
17										
18										
19										
20										

3025	807	1248	2055	685	
736	1040	1776	592	685	

813 427.50 304

130.54

9756 324

8974

LAND & A... VILLAGE OF STVAN BEACH... STVAN BEACH

Assessment Roll and Tax List of Real Property in the Town of Argon

Cass County, Minnesota, for Taxes for the Year 1950.

IN WHOSE NAME ASSESSED	TO WHOM TRANSFERRED	DESCRIPTION OF PROPERTY				No. School District	Indicate Homestead Tax or No	Indicate Agricultural Tax or No	TRUE AND FULL VALUATIONS				ASSESSED VALUATIONS					FINAL EQUALIZED VALUE
		SUBDIVISION	Sec. of Lot	Town or Block	Rng.				Number of Acres of Land	TOTAL True and Full Value	RURAL		ALL OTHER		MACHINERY	TOTAL ASSESSED VALUE	Total Assessed Value as Equalized by the Board of Review	
											Homestead Up to \$4,000 20%	Over \$4,000 and Non-Homestead 33 1/3%	Homestead Up to \$4,000 25%	Over \$4,000 and Non-Homestead 40%				
Fannie Dade	State of Minnesota	NE 1/4 of NE 1/4	10	135	30	40	1	No	264	240		24	240	88	88			
State of Minnesota		NW 1/4 of NE 1/4																
State of Minnesota		SW 1/4 of NE 1/4																
State of Minnesota		SE 1/4 of NE 1/4																
Lealie + Rose Pietry	State of Minnesota	NE 1/4 of NW 1/4				40	Yes		130	120		26	24	26	26			
"	State of Minnesota	NW 1/4 of NW 1/4				40	"		120	120		24	24	24	24			
State of Minnesota		SW 1/4 of NW 1/4							305	305		61	61	61	61			
State of Minnesota		SE 1/4 of NW 1/4							275	275		55	55	55	55			
Ernest J. + Orpha Stark		NE 1/4 of SW 1/4				40	"		175	160	875	197	167	197	197			
"		NW 1/4 of SW 1/4				40	"		160	170	675	34	34	34	34			
"		SW 1/4 of SW 1/4				40	"		170	155		31	31	31	31			
"		SE 1/4 of SW 1/4				40	"		280	255		56	56	56	56			
Wm. Roy Fisher	State of Minnesota (Cont. to E. J. Stark)	NE 1/4 of SE 1/4				40	No		395	360		79	72	79	79			
State of Minnesota		NW 1/4 of SE 1/4				40	Yes		132	120		24	24	24	24			
State of Minnesota		SW 1/4 of SE 1/4				40	"		175	175		35	32	35	35			
Wm. Roy Fisher		SE 1/4 of SE 1/4				40	No		175	160		35	32	35	35			
						40			160	160		32	32	32	32			
						40			282	256		57	54	57	57			
						40			356	374		72	72	72	72			
						440			2483	2261		523	464	523	523			
									2261	1049		330	330	330	330			
												774	899	899	899			

SOLID FOR TAXES	VALUATIONS BY SCHOOL DISTRICTS AS EQUALIZED BY DEPARTMENT OF TAXATION						Tax Including State Homestead Mills	State Tax on Non-Homestead 4.40 Mills	SPECIAL TAXES	TOTAL TAXES	PAID	WHEN PAID	Number of Receipt	March Settlement 1951	June Settlement 1951	Penalty	November Settlement 1951	Penalty	Collections to First Monday in January 1952	Penalty	Delinquent on First Monday in January 1952	Total Delinquent Tax and Penalty	REMARKS			
	District No.	District No.	District No.	District No.	District No.	District No.																				
	Rate	Rate	Rate	Rate	Rate	Rate																				
1									88	19.28	31	19.66	1	PAID IN FULL	MAR 21 1951	3997					1966					
2																										
3																										
4																										
5																										
6									26	570		570	6	2nd Half Paid	OCT 31 1951	14236					285		285			
7									61	1326		1326	7	1st Half Paid	MAY 31 1951	14236					668		668			
8																										
9																										
10																										
11									197	4314		4374	11	2nd Half Paid	OCT 31 1951	14912					2157		2157			
12									34	744		744	12	1st Half Paid	MAY 31 1951	10137					372		372			
13									56	1226		1226	13	2nd Half Paid	OCT 31 1951	14912					613		613			
14									79	1730		1730	14	1st Half Paid	MAY 31 1951	10137					865		865			
15																										
16									44	964	20	984	16	1st Half Paid	MAY 31 1951	10124					449		449		542	596
17									35	766		766	17	2nd Half Paid	OCT 31 1951	14912					383		383			
18									35	766		766	18	1st Half Paid	MAY 31 1951	10137					383		383			
19									244	5344	108	5452	19	2nd Half Paid	OCT 31 1951	14912					2726		2726		2999	
20									899	19688	166	19854									10860		5726		3268	

LAND & ALI... LAND & ALI... VILLAGE OF STIVAN... STIVAN BEACH

Assessment Roll and Tax List of Real Property in the Town of Sylvan

Table with columns: IN WHOSE NAME ASSESSED, TO WHOM TRANSFERRED, DESCRIPTION OF PROPERTY, TRUE AND FULL VALUATIONS, ASSESSED VALUATIONS, and FINAL EQUALIZED VALUE. Includes entries for Frank L. & Alice M. Allen and Walter A. & Verna M. Fisher.

Cass County, Minnesota, for Taxes for the Year 1950.

Table with columns: SOLD FOR TAXES, VALUATIONS BY SCHOOL DISTRICTS AS EQUALIZED BY DEPARTMENT OF TAXATION, Tax including State Homestead, State Tax on Non-Homestead, SPECIAL TAXES, TOTAL TAXES, PAID, WHEN PAID, Number of Receipt, March Settlement, June Settlement, November Settlement, Collections to First Monday in January 1952, Delinquent on First Monday in January 1952, Total Delinquent Tax and Penalty, and REMARKS. Includes handwritten tax amounts and payment dates.

LAND & AIR RIGHTS TO ST. ANNE'S VILLAGE OF SYLVAN, NEAR SYLVAN PARK, SYLVAN BEACH

Assessment Roll and Tax List of Real Property in the Town of Sylvan

Table with columns: IN WHOSE NAME ASSESSED, TO WHOM TRANSFERRED, DESCRIPTION OF PROPERTY, TRUE AND FULL VALUATIONS, ASSESSED VALUATIONS, FINAL EQUALIZED VALUE. Includes entries for Lewis J. + Doris J. Johnson, Theodore Prescott, Otto + Eleanor Citrowski, State of Minnesota, Minnesota Power + Light Co., Byrl M. + Norma Wilder, Minnesota Power + Light Co.

Cass County, Minnesota, for Taxes for the Year 1950.

Table with columns: SOLD FOR TAXES, VALIDATIONS BY SCHOOL DISTRICTS AS EQUALIZED BY DEPARTMENT OF TAXATION, Tax including State Homestead, State Tax on Non-Homestead, SPECIAL TAXES, TOTAL TAXES, PAID, WHEN PAID, Number of Receipt, March Settlement, June Settlement, November Settlement, Collections to First Monday in January 1952, Delinquent on First Monday in January 1952, Total Delinquent Tax and Penalty, REMARKS. Includes entries for 1, 2, 5, 11, 12, 13, 14, 15, 16, 17, 18, 20.

LAND & AT... ADD'D TO S... ADD'D TO... VILLAGE OF SYLVAN... BEH SYLVAN... CANTON'S SYLVAN PARK... SYLVAN BEACH

Assessment Roll and Tax List of Real Property in the Town of Leyvan

Cass County, Minnesota, for Taxes for the Year 1950.

IN WHOSE NAME ASSESSED	TO WHOM TRANSFERRED	DESCRIPTION OF PROPERTY				TRUE AND FULL VALUATIONS				ASSESSED VALUATIONS					FINAL EQUALIZED VALUE								
		SUBDIVISION	Sec. or Lot	Town or Block	Rng.	Number of Acres of Land	No. of Structures	LAND Excludes of Structures and Improvements	BUILDINGS and Other Structures	MACHINERY Permanently Attached to Real Estate	TOTAL True and Full Value	RURAL		ALL OTHER		MACHINERY Permanently Attached to Real Estate	TOTAL ASSESSED VALUE	Total Assessed Value as Equalized by the Board of Review					
												Acres 100ths	Dollars	Dollars					Dollars	Dollars	Dollars	Dollars	Dollars
<u>L. J. & Carrie Gladders</u>		<u>Leyvan Shady Shore</u>	21	1		1	45	210		255		85				72	85						
<u>Elmer E. Erickson</u>			22				42	176		218		14				13	14						
"			23				39	210		249		13				13	14						
"			24				42	174		216		14				13	14						
"			25				3			3		1				1	1						
"			26				3			3		1				1	1						
"			27	2			18	240		258		16				72	86						
"			28				16	200		216		18				5	6						
"			29				15			15		5				5	6						
"			30				15			15		5				5	6						
<u>Delia Bailey</u>			31				18	480		498		66				55	66						
<u>Arthur Langman</u>			32				18	180		198		66				55	66						
<u>Elmer E. Erickson</u>			33				15	150		165		55				55	66						
"	<u>Herbert W. Fortner</u>		34				9			9		3				3	3						
"	"		35				9			9		3				3	3						
"	"		36				9			9		3				3	3						
<u>Elmer E. Erickson</u>			37				9			9		3				3	3						
<u>Clyde & Edna Woods & Ernest & Ethel Johnson</u>			38				9			9		3				3	3						
"			39				9			9		3				3	3						
<u>Elmer Erickson</u>			40				9			9		3				3	3						
"			41				9			9		3				3	3						
			42				9			9		3				3	3						
			43				9			9		3				3	3						
			44				9			9		3				3	3						
			45				9			9		3				3	3						
			46				9			9		3				3	3						
			47				9			9		3				3	3						
			48				9			9		3				3	3						
			49				9			9		3				3	3						
			50				9			9		3				3	3						
			51				9			9		3				3	3						
			52				9			9		3				3	3						
			53				9			9		3				3	3						
			54				9			9		3				3	3						
			55				9			9		3				3	3						
			56				9			9		3				3	3						
			57				9			9		3				3	3						
			58				9			9		3				3	3						
			59				9			9		3				3	3						
			60				9			9		3				3	3						
			61				9			9		3				3	3						
			62				9			9		3				3	3						
			63				9			9		3				3	3						
			64				9			9		3				3	3						
			65				9			9		3				3	3						
			66				9			9		3				3	3						
			67				9			9		3				3	3						
			68				9			9		3				3	3						
			69				9			9		3				3	3						
			70				9			9		3				3	3						
			71				9			9		3				3	3						
			72				9			9		3				3	3						
			73				9			9		3				3	3						
			74				9			9		3				3	3						
			75				9			9		3				3	3						
			76				9			9		3				3	3						
			77				9			9		3				3	3						
			78				9			9		3				3	3						
			79				9			9		3				3	3						
			80				9			9		3				3	3						
			81				9			9		3				3	3						
			82				9			9		3				3	3						
			83				9			9		3				3	3						
			84				9			9		3				3	3						
			85				9			9		3				3	3						
			86				9			9		3				3	3						
			87				9			9		3				3	3						
			88				9			9		3				3	3						
			89				9			9		3				3	3						
			90				9			9		3				3	3						
			91				9			9		3				3	3						
			92				9			9		3				3	3						
			93				9			9		3				3	3						
			94				9			9		3				3	3						
			95				9			9		3				3	3						
			96				9			9		3				3	3						
			97				9			9		3				3	3						
			98				9			9		3				3	3						
			99				9			9		3				3	3						
			100				9			9		3				3	3						
			101				9			9		3				3	3						
			102				9			9		3				3	3						
			103				9			9		3				3	3						
			104				9			9		3				3	3						
			105				9			9		3				3	3						
			106				9			9		3				3	3						
			107				9			9		3				3	3						
			108				9			9		3				3	3						
			109				9			9		3				3	3						
			110				9			9		3				3	3						
			111				9			9		3				3	3						
			112				9			9		3				3	3						
			113				9			9		3				3	3						
			114				9			9		3				3	3						
			115				9			9		3				3	3						
			116				9			9		3				3	3						
			117				9			9		3				3	3						
			118				9			9		3				3	3						
			119				9			9		3				3	3						
			120				9			9		3				3	3						
			121				9			9		3				3	3						
			122				9			9		3				3	3						
			123				9			9		3				3	3						
			124				9			9													

CARLYON'S SYLVAN PARK SYLVAN SHADY SHORES LAND & ALLEN'S 1ST. ADDN. TO SYLVAN BEACH

IN WHOSE NAME ASSESSED	TO WHOM TRANSFERRED	DESCRIPTION OF PROPERTY				TRUE AND FULL VALUATIONS					ASSESSED VALUATIONS					FINAL EQUALIZED VALUE				
		SUBDIVISION	Sec. of Land	Town or Block	Rng.	Number of Acres of Land	No. School District	Indic. Home-Stead Yes or No	Indic. App. for Agri. Use Yes or No	+ 10% LAND Exclusive of Structures and Improvements	+ 20% BUILDINGS and Other Structures	MACHINERY Permanently Attached to Real Estate	RURAL		ALL OTHER		MACHINERY Permanently Attached to Real Estate	TOTAL ASSESSED VALUE	Total Assessed Value as Equalized by the Board of Review	
													Acres	10ths	Homestead Up to \$4,000					Over \$4,000 and Non-Homestead
John A. McWhirter		Sylvan Shady Shores	15	2		1	No		9			9				9		9		
"			16				"		9			9				9		9		
"			17				"		9			9				9		9		
"			18				"		9			9				9		9		
F. D. + Florence Schmidt			19				"		9			9				9		9		
Elmer E. Erickson			20				"		9			9				9		9		
"			21				"		9			9				9		9		
"			1	3			"		9			9				9		9		
William B. Bruns			2				"		45	240		285	95		80	75	80	75		
Elmer E. Erickson			3				"		40	200		240	80		80	95	80	95		
Steve Smykle + A.C. Elfert			4				"		45	210		255	95		80	95	80	95		
Elmer E. Erickson			5				"		45	240		285	95		80	95	80	95		
"			6				"		45	240		285	95		80	95	80	95		
"			7				"		42	210		252	84		84	95	84	95		
Virginia La Brie's Heirs + Creston Albert La Brie's			8				"		39	174		213	71		71	84	71	84		
Ernest + Eva Mae Munson			9				"		45	240		285	95		80	95	80	95		
Wm. + Martha Keahn			10				"		42	210		252	84		84	95	84	95		
Jack M. + Leonard J. Durham			11				"		39	174		213	71		71	84	71	84		
Elmer E. Erickson			12				"		42	210		252	84		84	95	84	95		
Elmer E. Erickson			13				"		39	174		213	71		71	84	71	84		
Elmer E. Erickson			14				"		42	210		252	84		84	95	84	95		
Elmer E. Erickson			15				"		39	174		213	71		71	84	71	84		
Elmer E. Erickson			16				"		42	210		252	84		84	95	84	95		
Elmer E. Erickson			17				"		39	174		213	71		71	84	71	84		
Elmer E. Erickson			18				"		42	210		252	84		84	95	84	95		
Elmer E. Erickson			19				"		39	174		213	71		71	84	71	84		
Elmer E. Erickson			20				"		42	210		252	84		84	95	84	95		
George N. Wilson			21				"		39	174		213	71		71	84	71	84		
			22				"		42	210		252	84		84	95	84	95		
			23				"		39	174		213	71		71	84	71	84		
			24				"		42	210		252	84		84	95	84	95		
			25				"		39	174		213	71		71	84	71	84		
			26				"		42	210		252	84		84	95	84	95		
			27				"		39	174		213	71		71	84	71	84		
			28				"		42	210		252	84		84	95	84	95		
			29				"		39	174		213	71		71	84	71	84		
			30				"		42	210		252	84		84	95	84	95		

SOLD FOR TAXES	VALUATIONS BY SCHOOL DISTRICTS AS EQUALIZED BY DEPARTMENT OF TALLATION						Tax Including State Homestead	State Tax on Non-Homestead	SPECIAL TAXES	TOTAL TAXES	PAID	WHEN PAID	Number of Receipt	March Settlement 1951	June Settlement 1951	November Settlement 1951	Collections to First Monday in January 1952	Delinquent on First Monday in January 1952	Total Delinquent Tax and Penalty	REMARKS
	District No.	District No.	District No.	District No.	District No.	District No.														
	Rate	Rate	Rate	Rate	Rate	Rate														
1						3	70		70	1	PAID IN FULL MAY 3 1951	1045								
2						3	70		70	2	PAID IN FULL MAY 3 1951	1065								
3						3	70		70	3	PAID IN FULL MAY 3 1951	1065								
4						3	70		70	4	PAID IN FULL MAY 3 1951	1065								
5						3	70		70	5										
6	SOLD FOR TAXES					3	70		70	6									70	77
7	SOLD FOR TAXES					3	70		70	7									70	
8	SOLD FOR TAXES					3	70		70	8									70	
9						95	2224	42	2266	9	1st Half Paid MAY 28 1951	8092			1133				1133	1246
10	SOLD FOR TAXES					14	328	06	334	10									334	
11						85	1990	38	2028	11	PAID IN FULL MAR 28 1951	4345			2028					
12	SOLD FOR TAXES					95	2224	42	2266	12	PAID IN FULL FEB 14 1951	1572			2266					
13	SOLD FOR TAXES					95	2224	42	2266	13									2266	
14	SOLD FOR TAXES					84	1966	36	2002	14	Part Paid OCT 28 1951	13562								
15						95	2224	42	2266	15	PAID IN FULL APR 28 1951	5726			2266					
16						84	1966	36	2002	16	PAID IN FULL MAY 1 1951	11231			2002					
17						84	1966	36	2002	17	PAID IN FULL JAN 30 1951	1112			2002					
18						84	1966	36	2002	18										
19	SOLD FOR TAXES					14	328	06	334	19	PAID IN FULL JAN 1 1951	129			334					
20						14	328	06	334	20	PAID IN FULL MAY 3 1951	1013			334					
						569	#1 20294	368	20662						1602	8043		1962		6015

LAND & ALLEN'S 2nd. ADDN. TO SYLVAN BEACH

Assessment Roll and Tax List of Real Property in the Town of Lyman

Cass County, Minnesota, for Taxes for the Year 1950

IN WHOSE NAME ASSESSED	TO WHOM TRANSFERRED	SUBDIVISION	DESCRIPTION OF PROPERTY			TRUE AND FULL VALUATIONS					ASSESSED VALUATIONS					FINAL EQUALIZED VALUE
			Sec. or Lot	Town or Block	Rng.	Number of Acres of Land	Machinery Permanently Attached to Real Estate	RURAL		ALL OTHER		Machinery Permanently Attached to Real Estate	TOTAL ASSESSED VALUE	Total Assessed Value as Equalized by the Board of Review		
								Acres	100ths	Homestead Up to \$4,000 20%	Over \$4,000 and Non-Homestead 33 1/3%				Homestead Up to \$4,000 25%	
L. Warner Peterson & Mary A. Peterson	Land & Allen's 2nd. Addn. to Lyman Beach (Part of Site 243 Sec. 11-133-30)		1				27	210			237	77		66	79	
Richard & Jennie W. Blake	"		2				24	174			198	66				
"	"		3				27				27	77		8	7	
"	"		4				24				24	77		8	7	
Leonard H. & Eva M. Strand	"		5				27	204			231	77		8	7	
Theodore O. & Elba E. Hildgeson	"	2 1/2 x 6 1/2 of	6				24	171			195	65		65	62	
"	"	"	7				27				27	77		8	7	
Ralph R. & Grace M. Bonham	"	"	8				24				24	77		8	7	
Land & Allen	"	"	9				27				27	77		8	7	
"	"	"	10				24				24	77		8	7	
Ernest & Lena Lively	"	"	11				27				27	77		8	7	
"	"	"	12				24				24	77		8	7	
Land & Allen	"	"	13				27				27	77		8	7	
"	"	"	14				24				24	77		8	7	
Allen & Ruth Freeman	"	"	15				27	210			237	77		8	7	
"	"	"	16				24	174			198	66		66	79	
Land & Allen	"	"	17				18				18	5		5	6	
Earl M. & Alice J. Nelson	"	"	18				27	222			249	83		5	6	
"	"	"	19				24	201			225	75		75	72	
Raymond & Katherine Herron	"	"	20				18				18	5		5	6	
							15				15	5		5	6	
							531	846			1377	459		396	459	
							468	720			1188	396		396	459	

SOLD FOR TAXES	VALUATIONS BY SCHOOL DISTRICTS AS EQUALIZED BY DEPARTMENT OF TAXATION						Tax Including State Homestead	State Tax on Non-Homestead	SPECIAL TAXES	TOTAL TAXES	PAID	WHEN PAID	Number of Receipts	March Settlement 1950	June Settlement 1951	Penalty	November Settlement 1951	Penalty	Collections to First Monday in January 1952	Penalty	Delinquent on First Monday in January 1952	Total Delinquent Tax and Penalty	REMARKS
	District No.	District No.	District No.	District No.	District No.	District No.																	
	Rate	Rate	Rate	Rate	Rate	Rate																	
	1	2	3	4	5	6																	
	79	9	9	9	77	9	17.80	34	17.64	1 PAID IN FULL	MAY 10 1951	6137		1764									
							1.98	04	2.02	2 PAID IN FULL	MAY 21 1951	6698		202									
							1.98	04	2.02	3 PAID IN FULL	MAY 21 1951	6698		202									
							1.98	04	2.02	4 PAID IN FULL	MAY 21 1951	6698		202									
							16.86	34	17.20	5 PAID IN FULL	MAY 31 1951	8001		1720									
							1.98	04	2.02			8001		202									
							1.98	04	2.02	6 PAID IN FULL	MAY 31 1951	8001		202									
							1.98	04	2.02	7 PAID IN FULL	MAY 31 1951	8001		202									
							1.98	04	2.02	8 PAID IN FULL	MAY 14 1951	3553		202									
SOLD FOR TAXES							1.98	04	2.02	9 PAID IN FULL	JUN 1 1951	8192		202									
							1.98	04	2.02	10 PAID IN FULL	MAY 2 1951	1128		101									
							1.98	04	2.02	11 PAID IN FULL	MAY 3 1951	1020		202									
							1.98	04	2.02	12 PAID IN FULL	MAY 3 1951	1020		202									
SOLD FOR TAXES							1.98	04	2.02	13													
SOLD FOR TAXES							1.98	04	2.02	14													
							17.80	34	17.64	15 PAID IN FULL	MAY 2 1951	6347		1764									
							1.32	02	1.34	16 PAID IN FULL	MAY 2 1951	6347		134									
SOLD FOR TAXES							1.32	02	1.34	17 PAID IN FULL	MAY 20 1951	199		134									
							18.18	36	18.54	18 PAID IN FULL	APR 15 1951	4621		1834									
							1.32	02	1.34	19 PAID IN FULL	APR 19 1951	4631		134									
							1.32	02	1.34	20 PAID IN FULL	APR 26 1951	6729		134									
							100.66	198	102.64					134	96.25							404	

LAND & ALLEN'S 1ST. ADDN. TO SYLVAN BEACH

LAND & ALLEN'S 2ND. ADDN. TO SYLVAN BEACH

LAND & ALLEN'S 3RD. ADDN. TO SYLVAN BEACH

LAND & ALLEN'S 4TH. ADDN. TO SYLVAN BEACH

LAND & ALLEN'S 5TH. ADDN. TO SYLVAN BEACH

LAND & ALLEN'S 6TH. ADDN. TO SYLVAN BEACH

LAND & ALLEN'S 7TH. ADDN. TO SYLVAN BEACH

LAND & ALLEN'S 8TH. ADDN. TO SYLVAN BEACH

LAND & ALLEN'S 9TH. ADDN. TO SYLVAN BEACH

LAND & ALLEN'S 10TH. ADDN. TO SYLVAN BEACH

LAND & ALLEN'S 11TH. ADDN. TO SYLVAN BEACH

LAND & ALLEN'S 12TH. ADDN. TO SYLVAN BEACH

LAND & ALLEN'S 13TH. ADDN. TO SYLVAN BEACH

LAND & ALLEN'S 14TH. ADDN. TO SYLVAN BEACH

LAND & ALLEN'S 15TH. ADDN. TO SYLVAN BEACH

LAND & ALLEN'S 16TH. ADDN. TO SYLVAN BEACH

LAND & ALLEN'S 17TH. ADDN. TO SYLVAN BEACH

LAND & ALLEN'S 18TH. ADDN. TO SYLVAN BEACH

LAND & ALLEN'S 19TH. ADDN. TO SYLVAN BEACH

LAND & ALLEN'S 20TH. ADDN. TO SYLVAN BEACH

LAND & ALLEN'S 3RD. ADDN. TO SYLVAN BEACH

