

Assessment & Tax List - 1963  
Slater









Assessment of T

COLLECTIONS OF TAXES OF 196

OF

CASS COUNTY, MINNESOTA

NAME OF OWNER	FUNDS	MARCH SETTLEMENT	JUNE SETTLEMENT	NOV. SETTLEMENT	Amount Collected from Nov. 19... to First Monday in Jan. 19...	REDUCTIONS	Total Reductions and Collected	BALANCE UNCOLLECTED	ADDITIONS	Total Uncollected to First Monday in January, 19...
		1964	1964	1964						
	State—Non-Homestead.	50 19	77 46	31 25						
	State—Homestead.	51 16	112 04	57 41						
	County Revenue.	107 19	436 48	223 30						
	County Road and Bridge.	68 04	277 06	141 73						
	County Welfare.	502 44	824 38	421 73						
	County Bond and Interest.	6 53	26 66	13 61						
	<i>C. Nurse</i>	2 99	12 19	6 23						
	<i>P.E.R.A.</i>	17 59	71 62	36 64						
	<i>Civil Defense</i>	61	2 49	1 28						
	Town Revenue.	13 03	53 06	27 14						
	Town Road and Bridge.	13 03	53 06	27 14						
	Town State Loan.									
	<i>Agri. Assn.</i>	1 64	6 65	3 40						
	<i>Transp.</i>	4 01	16 35	8 36						
	<i>Fire</i>	13 03	53 06	27 14						
	<i>C. H. Bell</i>	6 80	27 71	14 17						
	School Local 1 Mill.									
	School Special.	128 49	43 24	237 54						
	School State Loan.	20 28	82 56	42 24						
	Deficiency	169 91	691 95	353 99						
	Tuition									
	Transportation									
	<i>C.D.</i>	13 00	52 91	27 07						
	<i>P.E.R.A.</i>	19 50	79 38	40 60						
		849 46	3388 26	1741 97						

MARCH SETTLEMENT	SCHOOL DISTRICT NO.	SPECIAL LOCAL 1 MILL	SPECIAL	STATE LOAN	<i>Deficiency</i>	C. D.	P. E. R. A.	TOTALS
	1182	41 61		972	83 13	636	954	150 56
	11872	86 28		1036	86 78	664	996	200 62
	Totals	128 49		2028	169 91	1300	1950	351 18
	1182	261 42		6232	522 30	3994	5992	945 90
	11872	169 82		2024	169 65	1297	1946	372 14
	Totals	431 24		8256	691 95	5291	7938	1338 04
	1182	116 81		2785	233 38	1785	2677	422 66
	11872	120 73		1439	120 61	922	1383	278 78
	Totals	237 54		4224	353 99	2707	4060	701 44
	SCHOOL DISTRICT NO.							
	Totals							
	SCHOOL DISTRICT NO.							
	Totals							
	SCHOOL DISTRICT NO.							
	Totals							

Real Estate





















Assessment Roll and Tax List of Real Property in the Town of Slater

Form SCD - MILLER-DAVIS CO., MINNEAPOLIS

\* Indicate Type of Property: R-Residential, C-Commercial, I-Industrial, U-Utility, F-Farm, L-Lakeshore, T-Timber, M-Mineral

DESCRIPTION OF PROPERTY

TRUE AND FULL VALUATIONS

ASSESSED VALUATIONS

Table with columns: IN WHOSE NAME ASSESSED, SUBDIVISION, Sec. or Lot, Town or Block, Rng., Number of Acres of Land, No. School District, Indicate Homestead Yes or No, Agri. or Semi-Agri. Yes or No, Indicate Type of Property, LAND Exclusive of Structures and Improvements, BUILDINGS and Other Structures, MACHINERY Permanently Attached to Real Estate, TOTAL True and Full Value, RURAL (Homestead, Over \$4,000 and Non-Homestead, Timber Land Class 3e), ALL OTHER (Homestead, Over \$4,000 and Non-Homestead), MACHINERY Permanently Attached to Real Estate, Seasonal and Recreational Cabins, TOTAL ASSESSED VALUE, Total Assessed Value as Equalized by the Board of Review, FINAL EQUALIZED VALUE.

157 38

Cass County, Minnesota, for Taxes for the Year 1963.

Table with columns: SOLD FOR TAXES, VALUATIONS BY SCHOOL DISTRICTS AS EQUALIZED BY DEPARTMENT OF TAXATION (District No., Rate, Mills), Tax Including State Homestead, State Tax on Non-Homestead, SPECIAL TAXES, TOTAL TAXES, PAID, WHEN PAID (Month Day Year), Number of Receipt, March Settlement 1964, June Settlement 1964, Penalty, November Settlement 1964, Collections to First Monday in January 1965, Delinquent on First Monday in January 1965, Total Delinquent Tax and Penalty, REMARKS.

H 248

5780

5780

2890

2890

9647

9647

17815









Assessment Roll and Tax List of Real Property in the Town of Slater

\* Indicate Type of Property: R-Residential, C-Commercial, I-Industrial, U-Utility, F-Farm, L-Lakeshore, T-Timber, M-Mineral

Form 5CD MILLER-DAVIS CO., MINNEAPOLIS

Table with columns: IN WHOSE NAME ASSESSED, DESCRIPTION OF PROPERTY, TRUE AND FULL VALUATIONS, ASSESSED VALUATIONS, FINAL EQUALIZED VALUE. Includes handwritten names like George M. Ruggles and Charles C. + Beverly Ann Allison.

(continued)

1960

Cass County, Minnesota, for Taxes for the Year 1963.

Table with columns: SOLD FOR TAXES, VALUATIONS BY SCHOOL DISTRICTS AS EQUALIZED BY DEPARTMENT OF TAXATION, Tax including State Homestead, SPECIAL TAXES, TOTAL TAXES, PAID, WHEN PAID, Number of Receipt, March Settlement 1964, June Settlement 1964, Penalty, November Settlement 1964, Collections to First Monday in January 1965, Delinquent on First Monday in January 1965, Total Delinquent Tax and Penalty, REMARKS.

730 4 1582 158 103 833 261.991

17010 6734 746 23744

24490

23239

1251

Assessment Roll and Tax List of Real Property in the Town of Slater

\* Indicate Type of Property: R-Residential, C-Commercial, I-Industrial, U-Utility, F-Farm, L-Lakeshore, T-Timber, M-Mineral

Cass County, Minnesota, for Taxes for the Year 1963.

Table with columns: IN WHOSE NAME ASSESSED, DESCRIPTION OF PROPERTY, TRUE AND FULL VALUATIONS, ASSESSED VALUATIONS, and FINAL EQUALIZED VALUE. Includes entries for Robert J. + Gladys M. Clark, Bayard C. + La Vann M. Siglin, Chas. H. + Thelma M. Weiss, and John J. + Delila G. Swing.

Table with columns: VALUATIONS BY SCHOOL DISTRICTS AS EQUALIZED BY DEPARTMENT OF TAXATION, TAX INCLUDING STATE HOMESTEAD, SPECIAL TAXES, TOTAL TAXES, PAID, WHEN PAID, Number of Receipt, March Settlement 1964, June Settlement 1964, November Settlement 1964, Collections to First Monday in January 1965, Delinquent on First Monday in January 1965, Total Delinquent Tax and Penalty, and REMARKS. Includes handwritten notes and dates like '2nd HALF PAID OCT 26 1964'.

















Assessment Roll and Tax List of Real Property in the Town of Slater

\* Indicate Type of Property: R-Residential, C-Commercial, I-Industrial, U-Utility, F-Farm, L-Lakeshore, T-Timber, M-Mineral

Form 500 - MILLER-DAVIS CO., MINNEAPOLIS

Table with columns: IN WHOSE NAME ASSESSED, DESCRIPTION OF PROPERTY, TRUE AND FULL VALUATIONS, ASSESSED VALUATIONS, and FINAL EQUALIZED VALUE. Includes handwritten entries for John H. + Chloee S. Harner and U.S. of America.

80

Cass County, Minnesota, for Taxes for the Year 1963.

Table with columns: SOLD FOR TAXES, VALUATIONS BY SCHOOL DISTRICTS AS EQUALIZED BY DEPARTMENT OF TAXATION, Tax including State Homestead, State Tax on Non-Homestead, SPECIAL TAXES, TOTAL TAXES, PAID, WHEN PAID, Number of Receipt, March Settlement 1964, June Settlement 1964, November Settlement 1964, Collections to First Monday in January 1965, Delinquent on First Monday in January 1965, Total Delinquent Tax and Penalty, REMARKS. Includes handwritten tax amounts and payment dates.

4181

4218

4218

2109

2109

Assessment Roll and Tax List of Real Property in the Town of Slater

\* Indicate Type of Property: R-Residential, C-Commercial, I-Industrial, U-Utility, F-Farm, L-Lakeshore, T-Timber, M-Mineral

Form SCD - MILLER-DAVIS CO., MINNEAPOLIS

Table with columns: IN WHOSE NAME ASSESSED, DESCRIPTION OF PROPERTY, TRUE AND FULL VALUATIONS, ASSESSED VALUATIONS, and FINAL EQUALIZED VALUE. Includes entries for John J. + Delila G. Swing, Fred H. + Charles Barta, Judith Ann + Ronald G. Hanson, Jr., etc.

Cass County, Minnesota, for Taxes for the Year 1963.

Table with columns: VALUATIONS BY SCHOOL DISTRICTS AS EQUALIZED BY DEPARTMENT OF TAXATION, Tax Including State Homestead, State Tax on Non-Homestead, SPECIAL TAXES, TOTAL TAXES, PAID, WHEN PAID, Number of Receipt, March Settlement 1964, June Settlement 1964, November Settlement 1964, Collections to First Monday in January 1965, Delinquent on First Monday in January 1965, Total Delinquent Tax and Penalty, REMARKS. Includes entries for 1, 2, 3, 4, 5, 6, 7, 8, 19, 20.

Assessment Roll and Tax List of Real Property in the Town of Slater

Form 5CD MILLER-DAVIS CO., MINNEAPOLIS

\* Indicate Type of Property: R-Residential, C-Commercial, I-Industrial, U-Utility, F-Farm, L-Lakeshore, T-Timber, M-Mineral

Cass County, Minnesota, for Taxes for the Year 1963.

Table with columns: IN WHOSE NAME ASSESSED, DESCRIPTION OF PROPERTY, TRUE AND FULL VALUATIONS, ASSESSED VALUATIONS, and FINAL EQUALIZED VALUE.

Table with columns: VALUATIONS BY SCHOOL DISTRICTS AS EQUALIZED BY DEPARTMENT OF TAXATION, TAX INCLUDING STATE HOMESTEAD, SPECIAL TAXES, TOTAL TAXES, PAID, WHEN PAID, Number of Receipt, March Settlement 1964, June Settlement 1964, November Settlement 1964, Collections to First Monday in January 1965, Delinquent on First Monday in January 1965, Total Delinquent Tax and Penalty, REMARKS.

Assessment Roll and Tax List of Real Property in the Town of Slater

\* Indicate Type of Property: R-Residential, C-Commercial, I-Industrial, U-Utility, F-Farm, L-Lakeshore, T-Timber, M-Mineral

Form 5CD MILLER-DAVIS CO., MINNEAPOLIS

Table with columns: IN WHOSE NAME ASSESSED, DESCRIPTION OF PROPERTY, TRUE AND FULL VALUATIONS, ASSESSED VALUATIONS, and FINAL EQUALIZED VALUE. Includes handwritten entries for property owners like 'Alvelda + John Miller' and 'Clarence W. + Elmer A. Ramus'.

Cass County, Minnesota, for Taxes for the Year 1963.

Table with columns: VALUATIONS BY SCHOOL DISTRICTS AS EQUALIZED BY DEPARTMENT OF TAXATION, PAID, WHEN PAID, and various tax amounts. Includes handwritten notes like 'PAID IN FULL MAR 9 1964' and 'PAID IN FULL MAY 29 1964'.



Assessment Roll and Tax List of Real Property in the Town of Slater

Form 500 MILLER-DAVIS CO., MINNEAPOLIS

\* Indicate Type of Property: R-Residential, C-Commercial, I-Industrial, U-Utility, F-Farm, L-Lakeshore, T-Timber, M-Mineral

Cass County, Minnesota, for Taxes for the Year 1963.

Table with columns for IN WHOSE NAME ASSESSED, DESCRIPTION OF PROPERTY, TRUE AND FULL VALUATIONS, ASSESSED VALUATIONS, VALUATIONS BY SCHOOL DISTRICTS AS EQUALIZED BY DEPARTMENT OF TAXATION, and TAXES. Includes handwritten entries for property owners like O.M.L. + Luella A. Olson and Thomas Swankier.





Assessment Roll and Tax List of Real Property in the Town of Slater

Form 500 MILLER-DAVIS CO., MINNEAPOLIS

\* Indicate Type of Property: R-Residential, C-Commercial, I-Industrial, U-Utility, F-Farm, L-Lakeshore, T-Timber, M-Mineral

Real Estate

IN WHOSE NAME ASSESSED	DESCRIPTION OF PROPERTY				No. School District	Indicate Homestead Yes or No	Agr. or Seasonal Yes or No	Indicate Type of Property	TRUE AND FULL VALUATIONS										FINAL EQUALIZED VALUE	
	SUBDIVISION	Sec. or Lot	Town or Block	Rng.					Number of Acres of Land	ASSESSED VALUATIONS										
										LAND Exclusive of Structures and Improvements	BUILDINGS and Other Structures	MACHINERY Permanently Attached to Real Estate	TOTAL True and Full Value	RURAL		ALL OTHER				TOTAL ASSESSED VALUE
				Acres 100ths	Dollars	Dollars	Dollars	Dollars	Dollars	Dollars	Dollars	Dollars	Dollars	Dollars	Dollars	Dollars	Dollars			
					Dollars	Dollars	Dollars	Dollars	Dollars	Dollars	Dollars	Dollars	Dollars	Dollars	Dollars	Dollars	Dollars			

*Helge Boe*  
*Bonita M. Sarich*  
*Alexander F. + Myrtle C. Weidenbach*  
*Caroline C. + Clarence S. York, Sr.*  
*Ralph W. Brown*  
  
*Mabel M. + Phoebe R. Grange*  
*Dewain W. + Rosemary West*  
 State of Minnesota  
*Harold I. + Leah H. Fanth*  
*Douglas Beckwith + Lottie M. Cooper*  
*James C. + Martha B. De Valk*

Cass County, Minnesota, for Taxes for the Year 1963.

SOLD FOR TAXES	VALUATIONS BY SCHOOL DISTRICTS AS EQUALIZED BY DEPARTMENT OF TAXATION						Tax Including State Homestead	State Tax on Non-Homestead	SPECIAL TAXES	SPECIAL TAXES	TOTAL TAXES	PAID	WHEN PAID	Number of Receipt	March Settlement 1964	June Settlement 1964	Penalty	November Settlement 1964	Penalty	Collections to First Monday in January 1965	Penalty	Delinquent on First Monday in January 1965	Total Delinquent Tax and Penalty	REMARKS
	District No.	District No.	District No.	District No.	District No.	District No.																		
	Rate	Rate	Rate	Rate	Rate	Rate																		
	Dollars	Dollars	Dollars	Dollars	Dollars	Dollars	\$ cts.	\$ cts.	\$ cts.	\$ cts.	\$ cts.	Month Day Year	\$ cts.	\$ cts.	\$ cts.	\$ cts.	\$ cts.	\$ cts.	\$ cts.	\$ cts.	\$ cts.	\$ cts.	\$ cts.	
	Dollars	Dollars	Dollars	Dollars	Dollars	Dollars	\$ cts.	\$ cts.	\$ cts.	\$ cts.	\$ cts.	Month Day Year	\$ cts.	\$ cts.	\$ cts.	\$ cts.	\$ cts.	\$ cts.	\$ cts.	\$ cts.	\$ cts.	\$ cts.		

11 2/6 5032 192 5224 2nd HALF PAID OCT 28 1964 19808  
 1st HALF PAID MAY 29 1964 12928 2612 2612  
 12 2/0 4894 188 5082 PAID IN FULL MAY 29 1964 12943 5082 17818 9602  
 13 30 700 26 726 PAID IN FULL MAY 29 1964 14162 726 9594 9605  
 15 2/6 5032 192 5224 PAID IN FULL MAY 29 1964 12916 5224 9604  
 16 3/6 9226 354 9580 Balance Paid MAY 29 1964 12920 5000 4580 17817 bal 4580 17367  
 18 91 2120 82 2202 2nd HALF PAID OCT 21 1964 19103  
 1st HALF PAID MAY 29 1964 12915 1101 1101  
 19 1/0 2330 90 2420 2nd HALF PAID MAY 18 1964 9961  
 1st HALF PAID MAY 18 1964 9960 1210 1210 17827 9595  
 20 2/6 5032 192 5224 PAID IN FULL MAY 29 1964 12929 5224 9679 9601  
 1475 34366 1316 35682 27389 8293

Assessment Roll and Tax List of Real Property in the Town of Slater, Cass County, Minnesota, for Taxes for the Year 1963.

Form SCD MILLER-DAVIS CO., MINNEAPOLIS

\* Indicate Type of Property: R-Residential, C-Commercial, I-Industrial, U-Utility, F-Farm, L-Lakeshore, T-Timber, M-Mineral

Table with columns: IN WHOSE NAME ASSESSED, DESCRIPTION OF PROPERTY, TRUE AND FULL VALUATIONS, ASSESSED VALUATIONS, and FINAL EQUALIZED VALUE. Includes handwritten entries for LeRoy Griffin and various subdivisions.

Cass County, Minnesota, for Taxes for the Year 1963.

Table with columns: VALUATIONS BY SCHOOL DISTRICTS AS EQUALIZED BY DEPARTMENT OF TAXATION, TAX INCLUDING STATE HOMESTEAD, SPECIAL TAXES, TOTAL TAXES, PAID, WHEN PAID, and REMARKS. Includes handwritten entries for taxes and payment dates.



Assessment Roll and Tax List of Real Property in the Town of Slater

Form SCD - MILLER-DAVIS CO., MINNEAPOLIS

\* Indicate Type of Property: R-Residential, C-Commercial, I-Industrial, U-Utility, F-Farm, L-Lakeshore, T-Timber, M-Mineral

Table with columns: IN WHOSE NAME ASSESSED, DESCRIPTION OF PROPERTY, TRUE AND FULL VALUATIONS, ASSESSED VALUATIONS (RURAL, ALL OTHER), and FINAL EQUALIZED VALUE.

Cass County, Minnesota, for Taxes for the Year 1963.

Table with columns: VALUATIONS BY SCHOOL DISTRICTS AS EQUALIZED BY DEPARTMENT OF TAXATION, TAXES (SPECIAL, TOTAL), PAID, WHEN PAID, Number of Receipt, and various settlement/penalty dates.

Assessment Roll and Tax List of Real Property in the Town of Slater

Form SCD - MILLER-DAVIS CO., MINNEAPOLIS

\* Indicate Type of Property: R-Residential, C-Commercial, I-Industrial, U-Utility, F-Farm, L-Lakeshore, T-Timber, M-Mineral

Table with columns: IN WHOSE NAME ASSESSED, DESCRIPTION OF PROPERTY, TRUE AND FULL VALUATIONS, ASSESSED VALUATIONS (RURAL, ALL OTHER), and FINAL EQUALIZED VALUE.

Cass County, Minnesota, for Taxes for the Year 1963.

Table with columns: SOLD FOR TAXES, VALUATIONS BY SCHOOL DISTRICTS AS EQUALIZED BY DEPARTMENT OF TAXATION, SPECIAL TAXES, TOTAL TAXES, PAID, WHEN PAID, Number of Receipt, March Settlement 1964, June Settlement 1964, November Settlement 1964, Penalty, Collections to First Monday in January 1965, Delinquent on First Monday in January 1965, Total Delinquent Tax and Penalty, REMARKS.



Assessment Roll and Tax List of Real Property in the Town of Slater

Form SCD MILLER-DAVIS CO., MINNEAPOLIS

\* Indicate Type of Property: R-Residential, C-Commercial, I-Industrial, U-Utility, F-Farm, L-Lakeshore, T-Timber, M-Mineral

Table with columns: IN WHOSE NAME ASSESSED, DESCRIPTION OF PROPERTY, TRUE AND FULL VALUATIONS, ASSESSED VALUATIONS, and FINAL EQUALIZED VALUE. Includes entries for C. Leslie Johnston, Eunice A. Filteau + Magnolia w. Booth and David P. + Amanda M. Bushaw.

Cass County, Minnesota, for Taxes for the Year 1963.

Table with columns: SOLD FOR TAXES, VALUATIONS BY SCHOOL DISTRICTS AS EQUALIZED BY DEPARTMENT OF TAXATION, Tax including State Homestead, State Tax on Non-Homestead, SPECIAL TAXES, TOTAL TAXES, PAID, WHEN PAID, Number of Receipt, March Settlement 1964, June Settlement 1964, November Settlement 1964, Collections to First Monday in January 1965, Delinquent on First Monday in January 1965, Total Delinquent Tax and Penalty, and REMARKS. Includes handwritten entries for tax payments and amounts.







Assessment Roll and Tax List of Real Property in the Town of Slater

Form SCD - MILLER-DAVIS CO., MINNEAPOLIS

\* Indicate Type of Property: R-Residential, C-Commercial, I-Industrial, U-Utility, F-Farm, L-Lakeshore, T-Timber, M-Mineral

Cass County, Minnesota, for Taxes for the Year 1963.

Table with columns for Description of Property, True and Full Valuations, Assessed Valuations, Valuations by School Districts, and Tax/Paid information. Includes handwritten entries for property owners like Walter + Kathryn Andrews, Henry Frank, Chas. A. Graham, and John E. + Virginia Resler.



Assessment Roll and Tax List of Real Property in the Town of Slater

\* Indicate Type of Property: R-Residential, C-Commercial, I-Industrial, U-Utility, F-Farm, L-Lakeshore, T-Timber, M-Mineral

Form 5C MILLER-DAVIS CO., MINNEAPOLIS

IN WHOSE NAME ASSESSED	DESCRIPTION OF PROPERTY				No. School District	Indi- cate Yes or No	Agri- or Hem- stead Yes or No	* Indi- cate Type of Prop- erty	TRUE AND FULL VALUATIONS				ASSESSED VALUATIONS							FINAL EQUALIZED VALUE	
	Lakeside Park SUBDIVISION	Sec. or Lot	Town or Block	Rng. of Land					Number of Acres of Land	LAND Exclusive of Structures and Improvements	BUILDINGS and Other Structures	MACHINERY Permanently Attached to Real Estate	TOTAL True and Full Value	RURAL		ALL OTHER			TOTAL ASSESSED VALUE		Total Assessed Value as Equalized by the Board of Review
														Homestead Up to \$4,000 20%	Over \$4,000 and Non- Homestead 33 1/4%	Timber Land Class 3e 20%	Homestead Up to \$4,000 25%	Over \$4,000 and Non- Homestead 40%			
Valdie G. + Josephine M. Erickson	Lakeside Park	1	1		118	no	SR	L													
"	Lakeside Park	2					"	"													
"	Lakeside Park	3					"	"													
Erick N. + Grunhild L. Anderson	Lakeside Park	4					"	"													
"	Lakeside Park	5					"	"													
Clifford A. Noell	Lakeside Park	6					"	"													
"	Lakeside Park	7					"	"													
Benjamin Magnuson	Lakeside Park	8					"	"													
"	Lakeside Park	9					"	"													
"	Lakeside Park	10					"	"													
Don + Ruth E. Beam	Lakeside Park	11				yes	no	L													
"	Lakeside Park	12				"	"	"													
"	Lakeside Park	13				"	"	"													
Roy A. + Mildred R. Ahlborn	Lakeside Park	14				"	"	"													
"	Lakeside Park	15				"	"	"													
"	Lakeside Park	16				"	"	"													
"	Lakeside Park	17																			
"	Lakeside Park	18																			
"	Lakeside Park	19																			
"	Lakeside Park	20																			

LOT 6 + PART of LOT 5 - Sec. 34-142-26 Acres 100ths

Cass County, Minnesota, for Taxes for the Year 1963.

SOLD FOR TAXES	VALUATIONS BY SCHOOL DISTRICTS AS EQUALIZED BY DEPARTMENT OF TAXATION						Tax Including State Homestead	State Tax on Non-Homestead	SPECIAL TAXES	SPECIAL TAXES	TOTAL TAXES	PAID	WHEN PAID	Number of Receipt	March Settlement 1964	June Settlement 1964	Penalty	November Settlement 1964	Penalty	Collections to First Monday in January 1965	Penalty	Delinquent on First Monday in January 1965	Total Delinquent Tax and Penalty	REMARKS	
	District No.	District No.	District No.	District No.	District No.	District No.																			
	Rate	Rate	Rate	Rate	Rate	Rate																			
1	30						700	26			726	1	PAID IN FULL MAY 1 5 1964												
2	30						700	26			726	2	PAID IN FULL MAY 1 5 1964											9619	
3	75						1748	66			1814	3	PAID IN FULL MAY 1 5 1964												
4	30						700	26			726	4	PAID IN FULL MAY 2 9 1964												
5	163						3798	146			3944	5	PAID IN FULL MAY 2 9 1964											9620	
6	120						2796	108			2904	6	PAID IN FULL MAY 1 5 1964												
7	91						2120	82			2202	7	PAID IN FULL MAY 1 5 1964											9621	
8	631						14702	564			15266	8	PAID IN FULL MAY 2 9 1964												
9	30						700	26			726	9	PAID IN FULL MAY 2 9 1964											9622	
10	64						1492	58			1550	10	PAID IN FULL MAY 2 9 1964												
11							H 192				4954	11	1st HALF PAID MAY 2 9 1964												
12							H 22				568	12	1st HALF PAID MAY 2 9 1964											9633	
13							H 20				516	13	1st HALF PAID MAY 2 9 1964												
14							H 200				5160	14	PAID IN FULL OCT 2 0 1964												
15							H 20				516	15	PAID IN FULL OCT 2 0 1964											9641	
16							H 46				1186	16	PAID IN FULL OCT 3 0 1964												
17																									
18																									
19																									
20																									

1264 H 500 500 29456 12900 1128 43484 42356

33603 988

Assessment Roll and Tax List of Real Property in the Town of Slater

Form 50 MILLER-DAVIS CO., MINNEAPOLIS

\* Indicate Type of Property: R-Residential, C-Commercial, I-Industrial, U-Utility, F-Farm, L-Lakeshore, T-Timber, M-Mineral

Table with columns: IN WHOSE NAME ASSESSED, DESCRIPTION OF PROPERTY, TRUE AND FULL VALUATIONS, ASSESSED VALUATIONS, and FINAL EQUALIZED VALUE. Includes entries for Robert A. + Myrtle Kasper, H.A.W. Kasper, James A. + Mary C. Carroll, Phillip M. + Annette Hjaglien, Earl F. + Elsa A. Speck, and Rose Nicklason.

(continued)

Cass County, Minnesota, for Taxes for the Year 1963.

Table with columns: VALUATIONS BY SCHOOL DISTRICTS AS EQUALIZED BY DEPARTMENT OF TAXATION, TAX INCLUDING STATE HOMESTEAD, SPECIAL TAXES, TOTAL TAXES, PAID, WHEN PAID, Number of Receipt, March Settlement 1964, June Settlement 1964, Penalty, November Settlement 1964, Collections to First Monday in January 1965, Delinquent on First Monday in January 1965, Total Delinquent Tax and Penalty, and REMARKS. Includes entries for districts 1 through 20.



Assessment Roll and Tax List of Real Property in the Town of Slater

Form 5C MILLER-DAVIS CO., MINNEAPOLIS

\* Indicate Type of Property: R-Residential, C-Commercial, I-Industrial, U-Utility, F-Farm, L-Lakeshore, T-Timber, M-Mineral

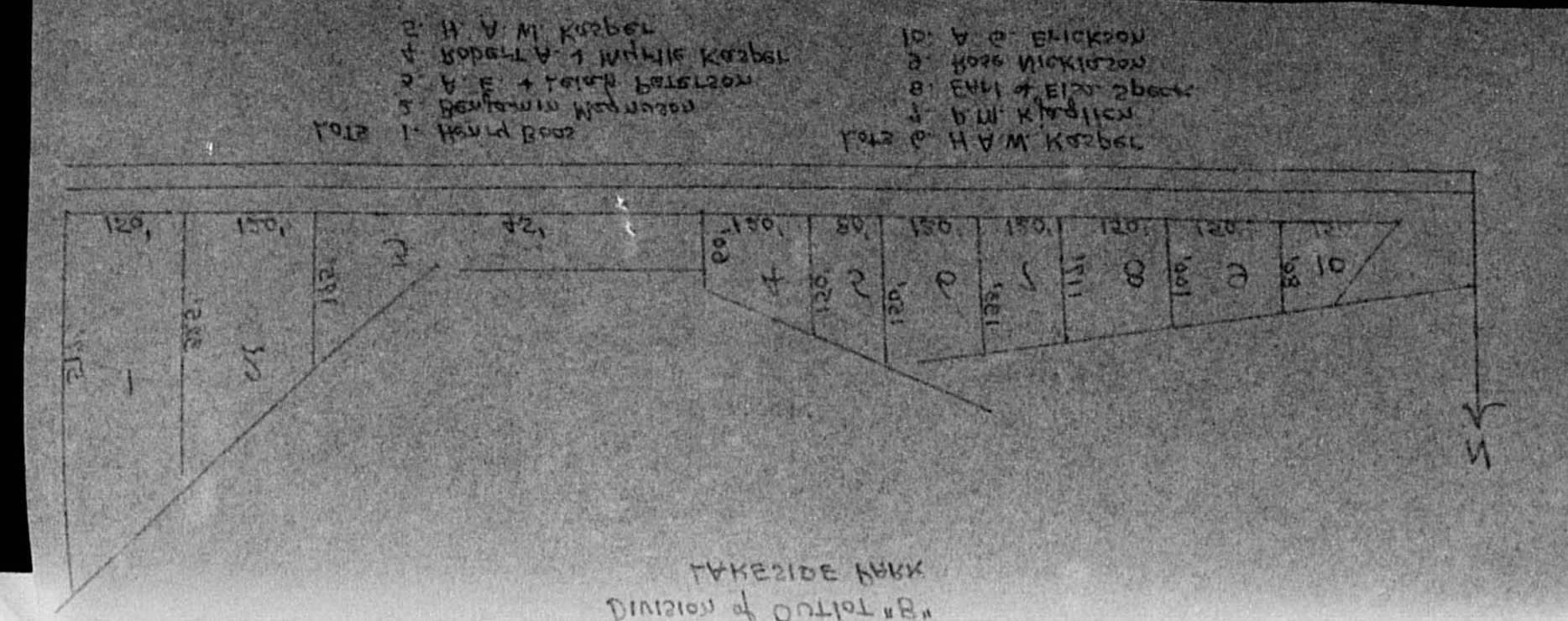
Table with columns: IN WHOSE NAME ASSESSED, DESCRIPTION OF PROPERTY, TRUE AND FULL VALUATIONS (RURAL, ALL OTHER), and FINAL EQUALIZED VALUE. Includes entries for Aug. G. Erickson and Loren E. + Carol A. Bauer.

Cass County, Minnesota, for Taxes for the Year 1963.

Table with columns: VALUATIONS BY SCHOOL DISTRICTS AS EQUALIZED BY DEPARTMENT OF TAXATION, TAXES (SOLD FOR, SPECIAL, TOTAL), PAID, WHEN PAID, and REMARKS. Includes handwritten calculations and tax amounts.



Assessment Roll and Tax List of Real Property in the Town of Skater



Form 50 MILLER-BAYNE CO., MINNEAPOLIS

Table with columns: IN WHOSE NAME ASSESSED, DESCRIPTION OF PROPERTY, TRUE AND FULL VALUATIONS (RURAL, ALL OTHER, MACHINERY, etc.), and FINAL EQUALIZED VALUE.

Handwritten names of property owners: Delbert H. + Maxine L. Bridge, Henry P. Boos, Benjamin Magnuson, A.E. + Lelah Peterson, Robert A. + Myrtle Kasper, H.A.W. Kasper, P.M. L'jazlien, Earl F. + Elsa A. Speck, Rose Nicklason, A.G. Erickson.

Cass County, Minnesota, for Taxes for the Year 1963.

Table with columns: VALUATIONS BY SCHOOL DISTRICTS AS EQUALIZED BY DEPARTMENT OF TAXATION, TAXES (SOLD FOR, PAID, WHEN PAID), and REMARKS.

Handwritten tax payment records and remarks, including dates like '2nd HALF PAID OCT 30 1964' and amounts like '192.72', '338', '196.10'.

