

Assessment & Tax list - 1959

Slater

INDEX TO SECTIONS

SECTION	PAGE
Sec. 1	
" 2	
" 3	
" 4	
" 5	
" 6	
" 7	
" 8	
" 9	
" 10	
" 11	
" 12	
" 13	
" 14	
" 15	
" 16	
" 17	
" 18	
" 19	
" 20	
" 21	
" 22	
" 23	
" 24	
" 25	
" 26	
" 27	
" 28	
" 29	
" 30	
" 31	
" 32	
" 33	
" 34	
" 35	
" 36	

For Convenience of Auditor in Showing Boundaries of School Districts

Township No. 142 Range No. 26 Mer. P. M.

1	2	3	4	5	6
7	8	9	10	11	12
13	14	15	16	17	18
19	20	21	22	23	24
25	26	27	28	29	30
31	32	33	34	35	36

Sch. Dist. #17 Row #118
Sept. 6, 1957

Returns Showing Grain Received in or Handled by Elevators, Warehouses and Mills in the _____ of _____ in the _____ for the Year Ending May 1, 1959.

NAMES OF OWNERS	ADDRESS	Bushels of Wheat	Bushels of Soy Beans	Bushels of Flax	Total No. of Bushels of Wheat, Soy Beans and Flax	★ Tax of 1/2 Mill per Bushel		Bushels of Corn	Bushels of Barley	Bushels of Rye	Bushels of Oats	Bushels of Buckwheat	Bushels of all Other Grains	Total No. Bushels of Corn, Barley, Rye, Oats, Buckwheat and all Other Grains	★ Tax of 1/4 Mill Per Bushel		★ Total Tax		REMARKS		
						Dollars	Cts.								Dollars	Cts.	Dollars	Cts.			

Note ★ Assessors will not fill these Columns

Real Estate
Personal

REAL PROPERTY BECOMING SUBJECT TO TAXATION SINCE THE LAST PREVIOUS ASSESSMENT OR OMITTED FROM ASSESSMENT ROLLS THE PREVIOUS YEARS.
Assessment of Taxable Real Property in the _____ **of** _____ **, County of** _____ **, Minn., for the Year 1957.**

Form 314 MILLER-DYER COMPANY, MINNEAPOLIS

* Indicate Type of Property: R-Residential, C-Commercial, I-Industrial, U-Utility, F-Farm, L-Lakeshore, T-Timber, M-Mineral

NAME OF OWNER	School District	SUBDIVISION	Number of Acres of Land		Indicate Homestead Yes or No	Indicate Agricultural Yes or No	* Indicate Type of Property	BY WHOM VALUED	TRUE AND FULL VALUATIONS				ASSESSED VALUATIONS						FINAL EQUALIZED VALUE		
			Sec. or Lot	Twp. or Block					Rng.	Dollars	Dollars	Dollars	Dollars	RURAL		ALL OTHER		MACHINERY Permanently Attached to Real Estate 33 1/4 %		TOTAL ASSESSED VALUE	Dollars
														Up to \$4,000 20%	Over \$4,000 and Non-Homestead 33 1/4 %	Homestead Up to \$4,000 25%	Over \$4,000 and Non-Homestead 40%				
			Total No. of Acres																		
			Total Value as Equalized by																		
			Total Value as Assessed by																		

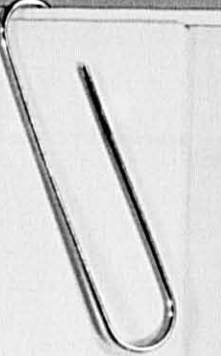
SUMMARY OF TAX COLLECTION

Original Levy - - - - - \$ 4888.24
 Additions - - - - - \$ _____
 Abatements - - - - - \$ 31.62
 \$ 4856.62

COLLECTIONS

March Settlement - - - - - \$ 992.12
 June Settlement - - - - - \$ 2133.88
 November Settlement - - - - - \$ 1096.72
 January Settlement - - - - - \$ 48.62 \$ 4271.34
 \$ 585.28

Over Collected - - - - - \$ _____
 Under Collected - - - - - \$ _____
 Delinquent - - - - - \$ 585.28 \$ 585.28
 Total - - - - - \$ _____



Real Estate

Personal

COLLECTIONS OF TAXES OF 1957

Town OF *Scatur*

CASS COUNTY, MINNESOTA

FUNDS	MARCH SETTLEMENT	JUNE SETTLEMENT	NOV. SETTLEMENT	Amount Collected from Nov. 1956 to First Monday in Jan. 1957	REDUCTIONS	Total Reductions and Collected	BALANCE UNCOLLECTED	ADDITIONS	Total Uncollected to First Monday in January, 1957
	1956	1956	1956						
State-Non-Homestead,	10 00	31 49	8 91	1 52					
State-Homestead,	13 46	62 83	30 39	82					
County Revenue,	132 88	274 14	147 92	6 69					
County Road and Bridge,	55 86	117 35	62 19	2 82					
County Welfare,	230 72	484 67	256 83	11 61					
County Road and Interest, <i>Tramp.</i>	4 18	8 76	4 65	20					
R. + B. F. O.	18 62	39 12	20 73	94					
PEPA	21 56	45 80	24 00	1 08					
Co. Nurse	7 45	15 65	8 29	37					
Town Revenue,	37 24	78 24	41 46	1 87					
Town Road and Bridge,									
Town Drug, <i>Fire</i>									
Town State Loan,									
R. + B. Bldg.	7 45	15 65	8 29	37					
Agrie. Adm.	1 86	3 91	2 07	39					
School Local 1 Mill,									
School Special,	141 45	301 87	136 61	4 69					
School State Loan,									
Deficiency	129 13	271 24	143 73	6 49					
Tuition									
Transportation									
State Loan	29 05	61 02	32 34	1 46					
C. O.	43 58	91 53	48 51	2 19					
B. + Int.	84 91	178 39	94 52	4 27					
PEPA	22 72	47 72	25 28	1 14					
	992 12	2133 88	1096 72	48 62					

SCHOOL DISTRICT NO.	LOCAL 1 MILL	SPECIAL	STATE LOAN	Ref.	C. O.	B. + Int.	PEPA	TOTALS
118-a		44 76	13 97	62 08	20 95	40 82	10 92	193 50
	118-7a	46 69	15 08	67 05	22 63	44 09	11 80	
Totals		141 45	29 05	129 13	43 58	84 91	22 72	450 84
118-a		89 30	27 86	128 85	41 79	81 46	21 79	386 05
	118-7a	212 57	33 16	147 39	49 74	96 93	25 93	
Totals		301 87	61 02	276 24	91 53	178 39	47 72	951 77
118-a		70 69	22 06	98 03	33 09	64 47	17 24	305 58
	118-7a	65 92	10 28	45 70	15 42	30 05	8 04	
Totals		136 61	32 34	143 73	48 51	94 52	25 28	480 99
118-a		4 69	1 46	6 49	2 19	4 27	1 14	20 24
Totals		4 69	1 46	6 49	2 19	4 27	1 14	20 24
ADDITIONS								
Totals								
REDUCTIONS								
Totals								

Real Estate

Personal

Assessment Roll and Tax List of Real Property in the Town of Slater, Cass County, Minnesota, for Taxes for the Year 1959.

Form 500-5-59

Indicate Type of Property: R-Residential, C-Commercial, I-Industrial, U-Utility, F-Farm, L-Lakeshore, T-Timber, M-Mineral

Cass County, Minnesota, for Taxes for the Year 1959.

Table with columns: IN WHOSE NAME ASSESSED, TO WHOM TRANSFERRED, DESCRIPTION OF PROPERTY (SUBDIVISION, Acres, etc.), TRUE AND FULL VALUATIONS (RURAL, ALL OTHER, MACHINERY, etc.), ASSESSED VALUATIONS (Homestead, etc.), VALUATIONS BY SCHOOL DISTRICTS AS EQUALIZED BY DEPARTMENT OF TAXATION (District No., Rate, etc.), and TAXES (SPECIAL, TOTAL, PAID, etc.).

Assessment Roll and Tax List of Real Property in the Town of Slater,

Cass County, Minnesota, for Taxes for the Year 1959.

Form SCD 8-11-59 MINN. STAT. 11.00

Table with columns: IN WHOSE NAME ASSESSED, TO WHOM TRANSFERRED, DESCRIPTION OF PROPERTY, TRUE AND FULL VALUATIONS, ASSESSED VALUATIONS, VALUATIONS BY SCHOOL DISTRICTS AS EQUALIZED BY DEPARTMENT OF TAXATION, SOLD FOR TAXES, SPECIAL TAXES, TOTAL TAXES, PAID, WHEN PAID, Number of Receipt, March Settlement 1960, June Settlement 1960, Penalty Settlement 1960, Penalty, Collections to First Monday in January 1961, Delinquent on First Monday in January 1961, Total Delinquent Tax and Penalty, REMARKS.

Personal

Assessment Roll and Tax List of Real Property in the Town of Slater, Cass County, Minnesota, for Taxes for the Year 1959.

Cass County, Minnesota, for Taxes for the Year 1959.

Form SCD MILLER-DAVIS CO., MINNEAPOLIS. Indicate Type of Property: R-Residential, C-Commercial, I-Industrial, U-Utility, F-Farm, L-Lakeshore, T-Timber, M-Mineral

Table with columns: IN WHOSE NAME ASSESSED, TO WHOM TRANSFERRED, DESCRIPTION OF PROPERTY (SUBDIVISION, Sec. of Lot, Town or Block, Rng., Number of Acres of Land), TRUE AND FULL VALUATIONS (LAND, BUILDINGS, MACHINERY, TOTAL), ASSESSED VALUATIONS (RURAL, ALL OTHER, MACHINERY, TOTAL ASSESSED VALUE), FINAL EQUALIZED VALUE.

Table with columns: SOLD FOR TAXES, VALUATIONS BY SCHOOL DISTRICTS AS EQUALIZED BY DEPARTMENT OF TAXATION (District No., Rate, etc.), Tax Including State Homestead, State Tax on Non-Homestead, SPECIAL TAXES, TOTAL TAXES, PAID, WHEN PAID, Number of Receipt, March Settlement, June Settlement, Penalty, November Settlement, Penalty, Collections to First Monday in January 1961, Delinquent on First Monday in January 1961, Total Delinquent Tax and Penalty, REMARKS.

Personal

Assessment Roll and Tax List of Real Property in the Town of Slater, Cass County, Minnesota, for Taxes for the Year 1959.

Form SCD-MILLER-DAVIS CO., MINNEAPOLIS

Table with columns: IN WHOSE NAME ASSESSED, TO WHOM TRANSFERRED, DESCRIPTION OF PROPERTY, TRUE AND FULL VALUATIONS, ASSESSED VALUATIONS, VALUATIONS BY SCHOOL DISTRICTS AS EQUALIZED BY DEPARTMENT OF TAXATION, SOLD FOR TAXES, PAID, WHEN PAID, Number of Receipt, March Settlement 1960, June Settlement 1960, Penalty, November Settlement 1960, Penalty, Collections to First Monday in January 1961, Penalty, Delinquent on First Monday in January 1961, Total Delinquent Tax and Penalty, REMARKS.

U. S. of America 1 NE 1/4 of NE 1/4 8 142 26 118
U. S. of America 2 NW 1/4 of NE 1/4
U. S. of America 3 SW 1/4 of NE 1/4
U. S. of America 4 SE 1/4 of NE 1/4
Mary E. + Evelyn L. Pohl 6 NE 1/4 of NW 1/4 52 43 42 1/2 1/2
U. S. of America 7 NW 1/4 of NW 1/4 Lot 1 52 43 42 1/2 1/2
Gladys J. Moody, Edward Frederick + Rex Donald Maddox 8 SW 1/4 of NW 1/4 50 40 70 " "
Mary E. + Evelyn L. Pohl 9 SE 1/4 of NW 1/4 49 85 42 " "
" " " 11 NE 1/4 of SW 1/4 46 30 42 " "
Gladys J. Moody, Edward Frederick + Rex Donald Maddox 12 NW 1/4 of SW 1/4 46 30 70 " "
U. S. of America 13 1/2 of SW 1/4 of SW 1/4 less E 5 acs. 40 42 " "
Evelyn L. + Mary E. Pohl 14 SE 1/4 of SW 1/4 40 42 " "
State of Minnesota 15 E 5 acs. of 1/2 of SW 1/4 of SW 1/4 40 42 " "
U. S. of America 16 NE 1/4 of SE 1/4 36 50 42 " "
Mary E. + Evelyn L. Pohl 17 NW 1/4 of SE 1/4 42 55 42 " "
" " " 18 SW 1/4 of SE 1/4 36 50 42 " "
U. S. of America 19 SE 1/4 of SE 1/4 42 55 42 " "
State of Minnesota 20 S 1/3 of SW 1/4 of SW 1/4 36 4 33 36 4 33

588
120
708
18068 7/8
18144
9072 9072

Personal

Assessment Roll and Tax List of Real Property in the Town of Slater

Form 562 MILLER-DAVIS CO., MINNEAPOLIS

Indicate Type of Property: R-Residential, C-Commercial, I-Industrial, U-Utility, F-Farm, L-Lakeshore, T-Timber, M-Mineral

Cass County, Minnesota, for Taxes for the Year 1959.

Table with columns for 'IN WHOSE NAME ASSESSED', 'TO WHOM TRANSFERRED', 'DESCRIPTION OF PROPERTY', 'TRUE AND FULL VALUATIONS', 'ASSESSED VALUATIONS', 'VALUATIONS BY SCHOOL DISTRICTS AS EQUALIZED BY DEPARTMENT OF TAXATION', 'SOLD FOR TAXES', 'PAID', 'WHEN PAID', 'Number of Receipt', 'March Settlement 1960', 'June Settlement 1960', 'November Settlement 1960', 'Penalty', 'Collections to First Monday in January 1961', 'Penalty', 'Delinquent on First Monday in January 1961', 'Total Delinquent Tax and Penalty', and 'REMARKS'.

Personal

* Indicate Type of Property: R-Residential, C-Commercial, I-Industrial, U-Utility, F-Farm, L-Lakeshore, T-Timber, M-Mineral

IN WHOSE NAME ASSESSED	TO WHOM TRANSFERRED	DESCRIPTION OF PROPERTY				No. School District	Indicate Homestead Yes or No	Indicate Agricultural Tax No	Indicate Type of Property	TRUE AND FULL VALUATIONS				ASSESSED VALUATIONS								FINAL EQUALIZED VALUE
		SUBDIVISION	Sec. or Lot	Town or Block	Rng. Acres of Land					LAND Exclusive of Structures and Improvements	BUILDINGS and Other Structures	MACHINERY Permanently Attached to Real Estate	TOTAL True and Full Value	RURAL		ALL OTHER				TOTAL ASSESSED VALUE	Total Assessed Value as Equalized by the Board of Review	
														Homestead Up to \$4,000 20%	Over \$4,000 and Non-Homestead 33 1/3%	Timber Land Class 3e 20%	Homestead Up to \$1,000 25%	Over \$1,000 and Non-Homestead 40%	MACHINERY Permanently Attached to Real Estate 33 1/3%			
State of Minnesota Robert J. & Gladys M. Clark		NEW GENEW	14	142	26		118															
George M. Ruggles																						
Charles C. Allison + Beverly Ann Allison			75			770				51												
James A. + Bernice M. Helmuth			15			740																
Leona H. Blayer			7			770	40	T														
Ed L. + Jerry Anderson			35			770	70	L														
Raymond A. + Ethel Larson's Int. + Edward L. + Helen Smith's Int.						770																
Thomas Rainstad						770		R														
Howard E. + Ruth Knight						770	40	T														
Frank Crane and Eugene Ingalls																						
Continued on Next Page							1915															

SOLD FOR TAXES	VALUATIONS BY SCHOOL DISTRICTS AS EQUALIZED BY DEPARTMENT OF TAXATION						Tax including State Homestead	State Tax on Non-Homestead	SPECIAL TAXES	TOTAL TAXES	PAID	WHEN PAID	Number of Receipt	March Settlement 1960	June Settlement 1960	Penalty	November Settlement 1960	Collections to First Monday in January 1961	Penalty	Delinquent on First Monday in January 1961	Total Delinquent Tax and Penalty	REMARKS
	District No.	District No.	District No.	District No.	District No.	District No.																
	Rate	Rate	Rate	Rate	Rate	Rate																

48 30 = 430 1226
 377 = 425 11404 264 12894
 407 455 12630

11596 1298

Assessment Roll and Tax List of Real Property in the Town of Slater

Cass County, Minnesota, for Taxes for the Year 1959.

Table with columns for property description, valuations, taxes, and payments. Includes handwritten entries for names like 'State of Minnesota', 'Robert J. & Gladys M. Clark', and 'U. M. King'. Contains various numerical data points and dates.

Personal

Assessment Roll and Tax List of Real Property in the

Town of Slater

Form 5 CD MILLER-DAVIS CO., MINNEAPOLIS

* Indicate Type of Property: R-Residential, C-Commercial, I-Industrial, U-Utility, F-Farm, L-Lakeshore, T-Timber, M-Mineral

Cass County, Minnesota, for Taxes for the Year 1959.

IN WHOSE NAME ASSESSED	TO WHOM TRANSFERRED	DESCRIPTION OF PROPERTY					No. School District	Indicate Homestead Yes or No	Indicate Agricultural Yes or No	Indicate Type of Property	TRUE AND FULL VALUATIONS			ASSESSED VALUATIONS							Total Assessed Value as Equalized by the Board of Review	FINAL EQUALIZED VALUE	
		SUBDIVISION	Sec. or Lot	Town or Block	Rng.	Number of Acres of Land					LAND EXCLUSIVE OF STRUCTURES AND IMPROVEMENTS	BUILDINGS AND OTHER STRUCTURES	MACHINERY Permanently Attached to Real Estate	TOTAL True and Full Value	RURAL			ALL OTHER					
															Acres	100ths	Homestead Up to \$4,000 20%	Over \$4,000 and Non-Homestead 33 1/3%	Timber Land Class 3e 20%	Homestead Up to \$4,000 25%			Over \$4,000 and Non-Homestead 40%
U. S. of America		NEW of NEW	18	142	26		118																
U. S. of America		NW 1/4 of NEW																					
U. S. of America		SW 1/4 of NEW																					
U. S. of America		SE 1/4 of NEW																					
		NEW of NW 1/4																					
U. S. of America		NW 1/4 of NEW																					
<i>Alois + Hilda M. Warnert</i>		SW 1/4 of NW 1/4						4 1/2			4												
U. S. of America		SE 1/4 of NW 1/4																					
<i>Hubert Turner</i>		3 acs. of East Lot 5						3															
U. S. of America		NW 1/4 of SW 1/4																					
U. S. of America		NW 1/4 of SW 1/4																					
U. S. of America		SW 1/4 of SW 1/4																					
U. S. of America		SE 1/4 of SW 1/4																					
		NEW of SE 1/4																					
State of Minnesota		NW 1/4 of SE 1/4																					
U. S. of America		SW 1/4 of SE 1/4																					
U. S. of America		SE 1/4 of SE 1/4																					
								4428															

SOLD FOR TAXES	VALUATIONS BY SCHOOL DISTRICTS AS EQUALIZED BY DEPARTMENT OF TAXATION							Tax including State Homestead	State Tax on Non-Homestead	SPECIAL TAXES	TOTAL TAXES	PAID	WHEN PAID	Number of Receipt	March Settlement 1960	June Settlement 1960	November Settlement 1960	Penalty	Collections to First Monday in January 1961	Penalty	Delinquent on First Monday in January 1961	Total Delinquent Tax and Penalty	REMARKS
	District No.	District No.	District No.	District No.	District No.	District No.	District No.																
	Rate	Rate	Rate	Rate	Rate	Rate	Rate																
	118																						
	60						1532			1532			2nd HALF PAID OCT 31 1960	19345							9544		
	45						1148	28		1176			1st Half Paid MAY 21 1960	8986	766		766						
													10 PAID IN FULL MAY 31 1960	13465		1176						9545	
	60						2680	28		2708					1942							766	

Personal

* Indicate Type of Property: R-Residential, C-Commercial, I-Industrial, U-Utility, F-Farm, L-Lakeshore, T-Timber, M-Mineral

Table with columns: IN WHOSE NAME ASSESSED, TO WHOM TRANSFERRED, DESCRIPTION OF PROPERTY, TRUE AND FULL VALUATIONS, ASSESSED VALUATIONS (RURAL, ALL OTHER, MACHINERY), VALUATIONS BY SCHOOL DISTRICTS AS EQUALIZED BY DEPARTMENT OF TAXATION, SOLD FOR TAXES, PAID, WHEN PAID, Number of Receipt, March Settlement 1960, June Settlement 1960, Penalty Settlement 1960, Collections to First Monday in January 1961, Penalty, Delinquent on First Monday in January 1961, Total Delinquent Tax and Penalty, REMARKS.

Personal

Assessment Roll and Tax List of Real Property in the Town of Slater

Indicate Type of Property: R-Residential, C-Commercial, I-Industrial, U-Utility, F-Farm, L-Lakeshore, T-Timber, M-Mineral

Table with columns: IN WHOSE NAME ASSESSED, TO WHOM TRANSFERRED, DESCRIPTION OF PROPERTY, TRUE AND FULL VALUATIONS, ASSESSED VALUATIONS (RURAL, ALL OTHER), and FINAL EQUALIZED VALUE. Includes handwritten entries for various land parcels and their values.

Cass County, Minnesota, for Taxes for the Year 1959.

Table with columns: SOLD FOR TAXES, VALUATIONS BY SCHOOL DISTRICTS AS EQUALIZED BY DEPARTMENT OF TAXATION, Tax including State Homestead, State Tax on Non-Homestead, SPECIAL TAXES, TOTAL TAXES, PAID, WHEN PAID, Number of Receipt, March, June, November Settlements, and PENALTY. Includes handwritten entries for tax payments and balances.

Assessment Roll and Tax List of Real Property in the Town of Slater, of State of Minnesota

Cass County, Minnesota, for Taxes for the Year 1959.

Form 500 (REVISED 1958) MINN. STAT. 100.01, 100.02, 100.03

Table with columns: IN WHOSE NAME ASSESSED, TO WHOM TRANSFERRED, DESCRIPTION OF PROPERTY, TRUE AND FULL VALUATIONS, ASSESSED VALUATIONS, and FINAL EQUALIZED VALUE. Includes entries for State of Minnesota, Alvidas & John Miller, Raymond C. Kral, C. P. Rowen, Clarence W. & Elmer H. Ramus.

Table with columns: SOLD FOR TAXES, VALUATIONS BY SCHOOL DISTRICTS AS EQUALIZED BY DEPARTMENT OF TAXATION, SPECIAL TAXES, TOTAL TAXES, PAID, WHEN PAID, Number of Receipt, March Settlement, June Settlement, November Settlement, Collections to First Monday in January 1961, Delinquent on First Monday in January 1961, Total Delinquent Tax and Penalty, and REMARKS. Includes handwritten tax amounts and payment dates.

Personal

Assessment Roll and Tax List of Real Property in the Town of Slater, Minnesota

Cass County, Minnesota, for Taxes for the Year 1959.

Indicate Type of Property: R-Residential, C-Commercial, I-Industrial, U-Utility, F-Farm, L-Lakeshore, T-Timber, M-Mineral

Table with columns: IN WHOSE NAME ASSESSED, TO WHOM TRANSFERRED, DESCRIPTION OF PROPERTY, TRUE AND FULL VALUATIONS, ASSESSED VALUATIONS, VALUATIONS BY SCHOOL DISTRICTS AS EQUALIZED BY DEPARTMENT OF TAXATION, TAXES, PAID, WHEN PAID, etc.

(Continued on Next Page)

Personal

Lat. 7 Dec 28 - 14226

	3anth
$2\frac{1}{4}$	State Marrow.
$2\frac{1}{2}$ of $E\frac{1}{2}$ of $2\frac{1}{6}$	Bate
$E\frac{1}{2}$ of $2\frac{1}{2}$	Kemper
$2\frac{1}{4}$ of $E\frac{1}{2}$	Snyder
$E\frac{1}{2}$ of $2\frac{1}{6}$ of $E\frac{1}{2}$	Tobias
$E\frac{1}{4}$	3anth

→ 60

Assessment Roll and Tax List of Real Property in the Town of Slater, Cass County, Minnesota, for Taxes for the Year 1959.

Cass County, Minnesota, for Taxes for the Year 1959.

Form 5CD MILLER-DAVIS CO., MINNEAPOLIS

Table with columns for IN WHOSE NAME ASSESSED, TO WHOM TRANSFERRED, DESCRIPTION OF PROPERTY, TRUE AND FULL VALUATIONS, ASSESSED VALUATIONS, VALUATIONS BY SCHOOL DISTRICTS AS EQUALIZED BY DEPARTMENT OF TAXATION, SOLD FOR TAXES, PAID, WHEN PAID, and REMARKS.

Assessment Roll and Tax List of Real Property in the Town of Slater,

Indicate Type of Property: R-Residential, C-Commercial, I-Industrial, U-Utility, F-Farm, L-Lakeshore, T-Timber, M-Mineral

Form SCID MILLER-DAVIS CO., MINNEAPOLIS

Table with columns: IN WHOSE NAME ASSESSED, TO WHOM TRANSFERRED, DESCRIPTION OF PROPERTY, TRUE AND FULL VALUATIONS, ASSESSED VALUATIONS, FINAL EQUALIZED VALUE.

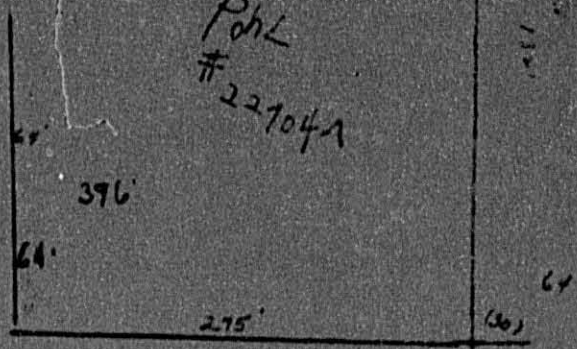
Cass County, Minnesota, for Taxes for the Year 1959.

Table with columns: SOLD FOR TAXES, VALUATIONS BY SCHOOL DISTRICTS AS EQUALIZED BY DEPARTMENT OF TAXATION, SPECIAL TAXES, TOTAL TAXES, PAID, WHEN PAID, Number of Receipt, March Settlement, June Settlement, November Settlement, Penalty, Collections to First Monday in January 1961, Delinquent on First Monday in January 1961, Total Delinquent Tax and Penalty, REMARKS.

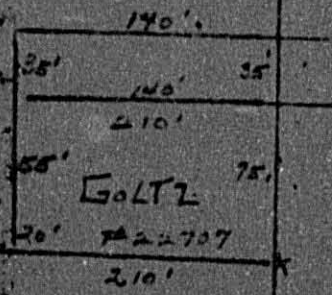
Lot 5 Sec 34-142-26

LOT 4

Pohl
#22704A

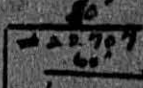


ERICKSON
#22700

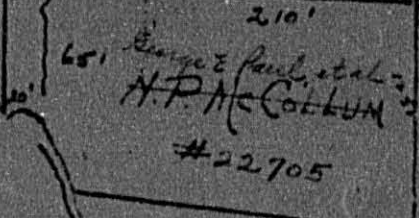


GOLTZ

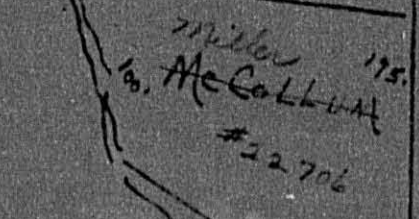
#22707



George E Paul, et al
H.P. McCollum
#22705



Miller
McCollum
#22706



Big Sand Lake

NW 1/4 of SE 1/4

190'
355'

LOT 29
Lane Side Park

Assessment Roll and Tax List of Real Property in the Town of Slater

Indicate Type of Property: R-Residential, C-Commercial, I-Industrial, U-Utility, F-Farm, L-Lakeshore, T-Timber, M-Mineral

Cass County, Minnesota, for Taxes for the Year 1959.

Table with columns: IN WHOSE NAME ASSESSED, TO WHOM TRANSFERRED, DESCRIPTION OF PROPERTY, TRUE AND FULL VALUATIONS, ASSESSED VALUATIONS, VALUATIONS BY SCHOOL DISTRICTS AS EQUALIZED BY DEPARTMENT OF TAXATION, TAXES, PAID, WHEN PAID, etc.

Assessment Roll and Tax List of Real Property in the Town of Slater

Form 50 MILLER-DAVIS CO., MINNEAPOLIS

* Indicate Type of Property: R-Residential, C-Commercial, I-Industrial, U-Utility, F-Farm, L-Lakeshore, T-Timber, M-Mineral

Blat of Lakeside Park

Table with columns: IN WHOSE NAME ASSESSED, TO WHOM TRANSFERRED, SUBDIVISION, Sec. or Lot, Town or Block, Rng., Number of Acres of Land, No. School District, Indicate Homestead Tax or No, Indicate Agricultural Tax or No, Indicate Type of Property, TRUE AND FULL VALUATIONS (LAND, BUILDINGS, MACHINERY, TOTAL), ASSESSED VALUATIONS (RURAL, ALL OTHER, MACHINERY, TOTAL ASSESSED VALUE, Total Assessed Value as Equalized), FINAL EQUALIZED VALUE.

Table with columns: SOLD FOR TAXES, VALUATIONS BY SCHOOL DISTRICTS AS EQUALIZED BY DEPARTMENT OF TAXATION, Tax including State Homestead, State Tax on Non-Homestead, SPECIAL TAXES, TOTAL TAXES, PAID, WHEN PAID, Number of Receipt, March Settlement 1960, June Settlement 1960, Penalty, November Settlement 1960, Penalty, Collections to First Monday in January 1961, Penalty, Delinquent on First Monday in January 1961, Total Delinquent Tax and Penalty, REMARKS.

Personal

Assessment Roll and Tax List of Real Property in the Town of Slater, of State of Minnesota

Form 50 MILLER-DAVIS CO., MINNEAPOLIS

* Indicate Type of Property: R-Residential, C-Commercial, I-Industrial, U-Utility, F-Farm, L-Lakeshore, T-Timber, M-Mineral

Blat of Lakeside Park

Table with columns: IN WHOSE NAME ASSESSED, TO WHOM TRANSFERRED, DESCRIPTION OF PROPERTY (Subdivision, Sec. or Lot, Town or Block, Rng., Number of Acres of Land), TRUE AND FULL VALUATIONS, ASSESSED VALUATIONS (RURAL, ALL OTHER), Total Assessed Value, and FINAL EQUALIZED VALUE.

Cass County, Minnesota, for Taxes for the Year 1959.

Table with columns: SOLD FOR TAXES, VALUATIONS BY SCHOOL DISTRICTS AS EQUALIZED BY DEPARTMENT OF TAXATION, SPECIAL TAXES, TOTAL TAXES, PAID, WHEN PAID, Number of Receipt, March Settlement 1960, June Settlement 1960, Penalty, November Settlement 1960, Penalty, Collections to First Monday in January 1961, Penalty, Delinquent on First Monday in January 1961, Total Delinquent Tax and Penalty, REMARKS.

Personal

Assessment Roll and Tax List of Real Property in the Town of Slater, Minnesota

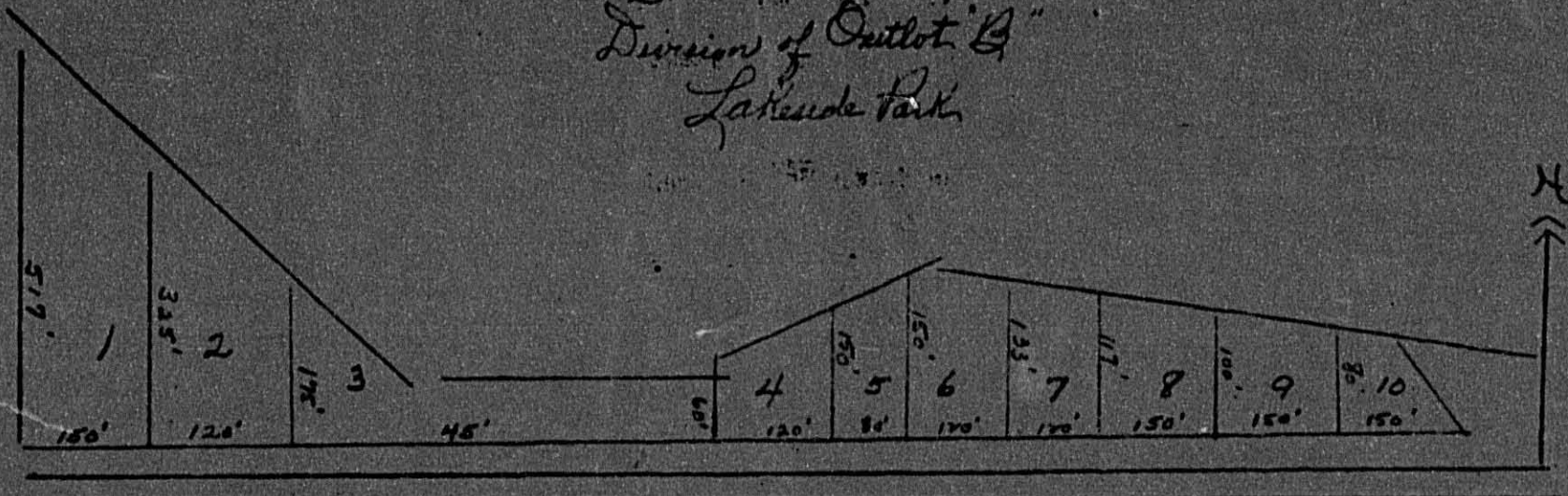
Cass County, Minnesota, for Taxes for the Year 1959.

Blat of Lakeside Park

Table with columns for Assessment Roll and Tax List. Includes sections for 'DESCRIPTION OF PROPERTY', 'TRUE AND FULL VALUATIONS', 'ASSESSED VALUATIONS', and 'VALUATIONS BY SCHOOL DISTRICTS AS EQUALIZED BY DEPARTMENT OF TAXATION'. Lists property owners like Robert H. & Maxine L. Bridge, Henry P. Boas, Benjamin Magnuson, etc., with their respective lots and tax amounts.

Personal

Water Township
 Division of "Outlot B"
 Lakeside Park



- Lot 1: Henry Boos
 2: Benjamin Magnuson
 3: A. E. Lelah Peterson
 4: Robert & Myrtle Kasper
 5: H. A. Kasper

- Lot 6: H. A. Kasper
 7: P. M. Afaghiem
 8: Earl & Edna Speck
 9: Rose Nickleson
 10: A. L. Erickson

