

Assessment & Tax List - 1958

Slater

SUMMARY OF TAX COLLECTION

<i>Original Levy</i>	- - - - -	\$ <u>3882.58</u>	
<i>Additions</i>	- - - - -	\$ _____	
			\$ <u>2882.58</u>
<i>Abatements</i>	- - - - -	\$ <u>59.38</u>	
			\$ <u>3824.20</u>

COLLECTIONS

<i>March Settlement</i>	- - - - -	\$ <u>523.75</u>	
<i>June Settlement</i>	- - - - -	\$ <u>1789.55</u>	
<i>November Settlement</i>	- - - - -	\$ <u>882.01</u>	
<i>January Settlement</i>	- - - - -	\$ <u>49.85</u>	\$ <u>3245.16</u>
			\$ _____
<i>Over Collected</i>	- - - - -	\$ <u>1.34</u>	
<i>Under Collected</i>	- - - - -	\$ _____	
<i>Delinquent</i>	- - - - -	\$ <u>579.38</u>	\$ <u>579.04</u>
<i>Total</i>	- - - - -		\$ <u>3824.20</u>

LAKESIDE PARK

TABULAR SCHEDULE OF VALUATIONS,
LEVIED IN THE Town OF Slater

School District No.	VALUATION BY SCHOOL DISTRICTS				RATE OF STATE TAXES	RATE OF COUNTY TAXES										RATE OF TOWN TAXES										RATE OF								
	Agric- ultural Lands	Non-Agric- ultural Lands	Personal Property	Total Value of all Property except Money and Credits	Total Rate of State Tax	Rev.	R. & B.	Wel- fare	Bonds and Int.	R & B Fed Prog.	PERA	Total Rate of County Tax	Rev.	R. & B.	Drag Tax	State Loan	Total Rate of Town Tax	Local	Spe- cial	State Loan	Defi- cien- cy	Tui- tion	Trans- porta- tion	e.o. PERA	Local	Spe- cial	State Loan	Defi- cien- cy	Tui- tion	Trans- porta- tion	e.o. PERA			
118	7059	5780	1847 } 7a 12 11	15,897	11. 5.90	29.54	15.51	68		5.345	109.17	6.3	6.3	1.	6.3	19.9	1.	25.79	26.44			1.45	9.77	3.37	19.08	94.08	229.05					1.45	9.77	3.37
					N.H. 6.52 12.42																													
Assessed Value					Total																													
Homestead	Rural	All Other	Personal Property	Total																														
	5536			5536																														
Non-Homestead	7303		3058	10361																														
Total	12839		3058	15,897																														

Assessed Value	Rural	All Other	Personal Property	Total
Homestead	5536			5536
Non-Homestead	7303		3058	10361
Total	12839		3058	15,897

RATES AND TAXES
COUNTY OF CASS, STATE OF MINNESOTA

SCHOOL TAXES			LOCAL 1 MILL AND SPECIAL SCHOOL TAXES BY DISTRICTS										ALL OTHER TAXES		
Total Rate of Sch'l Tax	Total Rate of all Taxes		Local 1 Mill	Special	State Loan	Def.	Transp.	C.O.	PERA	B.&I.	Total School Taxes	FUNDS	Rate	Amounts	
19.08	94.08	229.05	891	22265	7098	23547	1291	8701	3001	16993	83787	State - Non-Homestead,		6782	
19.08	119.08	254.05	699	34955	5572	18484	1014	6830	2356	13339	83249	State - Homestead,		9359	
			1590	57220	12670	42031	2305	15531	5357	30332	167036	County Revenue,		46960	
													County Road and Bridge,		23845
													County Welfare,		82156
													Bonds and Interest PERA		5484
													Co. Nurse		3179
													R & B Fed Prog.		7948
													Town Revenue,		10015
													Town Road and Bridge,		10015
													Town Drag,		1590
													Town State Loan,		10015
													Hire		31635
													School Local 1 Mill,		1590
													School Special,		57220
													School State Loan,		12670
													Deficiency		42031
													Tuition		
													Transportation		2305
													C.O.		15531
													PERA		5357
													B & I.		30332
															167036
															388358

County: R & B Bldg 3179
Agric Assn. 795
173546

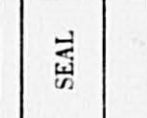
Total Taxes Real Estate 3/33.00
Pers. Prop. 750.58
Total 3883.58

Total Number of Acres 3757.39
Total Levy, \$ 3883.58

I, L. C. Peterson
Auditor of said County and State aforesaid, do hereby certify that the foregoing is a true and correct Schedule, showing the valuation of all the taxable property, in the Town of Slater, in said County, the several rates of Taxation and Totals of the several Tax Funds levied thereon for the year A. D. 1958.

Witness my hand and official seal, this 5th day of January, A. D. 1959.

L. C. Peterson County Auditor
By Nela Belden, Deputy.



Assessment Roll and Tax List of Real Property in the Town of *Slater*

* Indicate Type of Property: R-Residential, C-Commercial, I-Industrial, U-Utility, F-Farm, L-Lakeshore, T-Timber, M-Mineral

Table with columns: IN WHOSE NAME ASSESSED, TO WHOM TRANSFERRED, DESCRIPTION OF PROPERTY, TRUE AND FULL VALUATIONS, ASSESSED VALUATIONS, and FINAL EQUALIZED VALUE. Includes handwritten entries for Pearl & Mabel Garrett, A.M. King, and John Nelson.

Cass County, Minnesota, for Taxes for the Year 1958.

Table with columns: SOLD FOR TAXES, VALUATIONS BY SCHOOL DISTRICTS AS EQUALIZED BY DEPARTMENT OF TAXATION, SPECIAL TAXES, TOTAL TAXES, PAID, WHEN PAID, Number of Receipt, March Settlement, June Settlement, November Settlement, Collections to First Monday in January 1960, Delinquent on First Monday in January 1960, Total Delinquent Tax and Penalty, and REMARKS. Includes handwritten tax amounts and payment dates.

Assessment Roll and Tax List of Real Property in the Down Water

* Indicate Type of Property: R-Residential, C-Commercial, I-Industrial, U-Utility, F-Farm, L-Lakeshore, T-Timber, M-Mineral

Table with columns for IN WHOSE NAME ASSESSED, TO WHOM TRANSFERRED, DESCRIPTION OF PROPERTY, TRUE AND FULL VALUATIONS, ASSESSED VALUATIONS, and FINAL EQUALIZED VALUE. Includes handwritten notes like 'Clinton E Mason' and 'Geo. Backstrom'.

Cass County, Minnesota, for Taxes for the Year 1958.

Table for TAXES with columns for VALUATIONS BY SCHOOL DISTRICTS AS EQUALIZED BY DEPARTMENT OF TAXATION, SPECIAL TAXES, TOTAL TAXES, PAID, WHEN PAID, and various settlement dates (March, June, November 1959) and penalties.

LAKESIDE PARK

Assessment Roll and Tax I

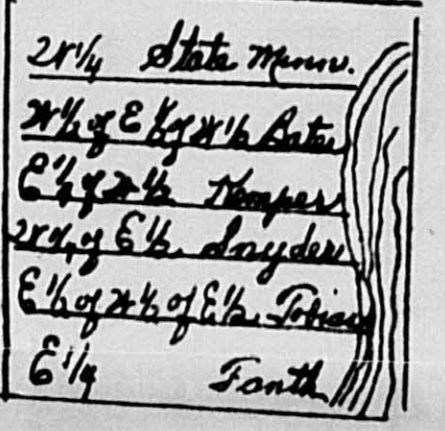
Town of Water

* Indicate Type of Property: R-Residential, C-Commercial, I-Industrial, U-Utility, F-Farm, L-Lakeshore, T-Timber, M-Mineral

Form SCD 11-14-56

IN WHOSE NAME ASSESSED	TO WHOM TRANSFERRED	SUBDIVISION	INDICATE TYPE OF PROPERTY	TRUE AND FULL VALUATIONS	ASSESSED VALUATIONS	TOTAL ASSESSED VALUE	Total Assessed Value as Equalized by the Board of Review	FINAL EQUALIZED VALUE
U. S. of America		NE 1/4 of NE 1/4						
U. S. of America		NW 1/4 of NE 1/4						
U. S. of America		SW 1/4 of NE 1/4						
U. S. of America		SE 1/4 of NE 1/4						
U. S. of America		NE 1/4 of NW 1/4						
U. S. of America		NW 1/4 of NW 1/4						
Harold G. & Emma C. Prammer		SW 1/4 of NW 1/4 Lot 3	T	300		300	100	100
U. S. of America		SE 1/4 of NW 1/4						
		NE 1/4 of SW 1/4						
Cass County Harold I. Franth Elleworth H. Bates		NW 1/4 of SW 1/4 Lot 5	L	291		291	97	97
Killie L. Kemper		SE 1/4 of SW 1/4 1/4 of 7	L	25		25	5	5
Ernest H. & Mildred Snyder Dewey + Stella Tobias		NE 1/4 of SW 1/4 1/4 of 7	T	36		36	12	12
Harold I. + Leach H. Franth		SW 1/4 of SW 1/4 1/4 of 7	L	24		24	8	8
		SE 1/4 of SW 1/4 1/4 of 7	L	33		33	11	11
				790		790	5	255

Lot 7 Sec 28-14-26



→ 6.

(Sec 24, continued on next page) 586

Cass County, Minnesota, for Taxes for the Year 1958.

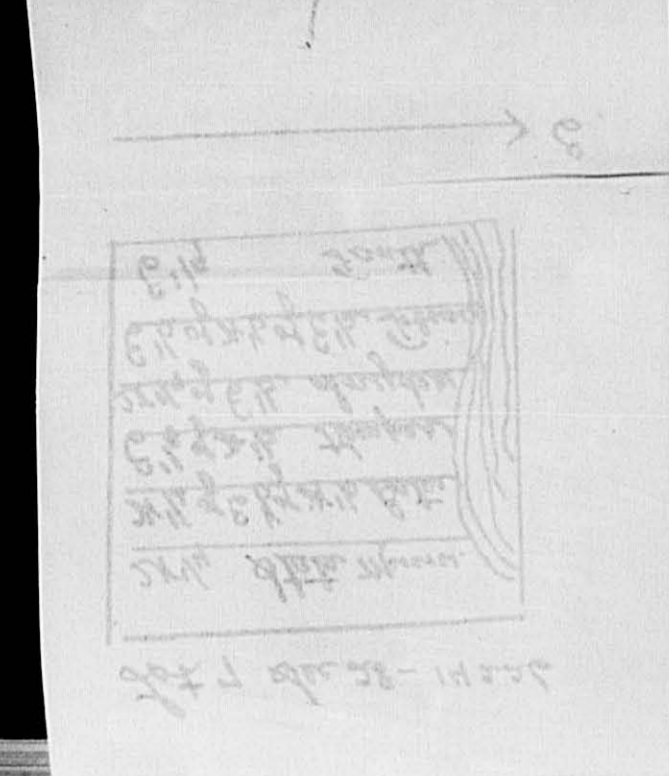
SOLD FOR TAXES	VALUATIONS BY SCHOOL DISTRICTS AS EQUALIZED BY DEPARTMENT OF TAXATION						Tax including State Homestead	State Tax on Non-Homestead	SPECIAL TAXES	TOTAL TAXES	PAID	WHEN PAID	Number of Receipt	March Settlement 1959	June Settlement 1959	Penalty	November Settlement 1959	Penalty	Collections to First Monday in January 1960	Penalty	Delinquent on First Monday in January 1960	Total Delinquent Tax and Penalty	REMARKS
	District No.	District No.	District No.	District No.	District No.	District No.																	
	Rate	Rate	Rate	Rate	Rate	Rate																	

Assessment Roll and Tax List of Real Property in the Town of White

* Indicate Type of Property: R-Residential, C-Commercial, I-Industrial, U-Utility, F-Farm, L-Lakeshore, T-Timber, M-Mineral

Table with columns: IN WHOSE NAME ASSESSED, TO WHOM TRANSFERRED, DESCRIPTION OF PROPERTY, TRUE AND FULL VALUATIONS, ASSESSED VALUATIONS, FINAL EQUALIZED VALUE. Includes handwritten entries for lots 1-20 and names like Harold C. & Emma C. Kramer.

(See 21, continued on next page)



Cass County, Minnesota, for Taxes for the Year 1958.

Table with columns: VALUATIONS BY SCHOOL DISTRICTS AS EQUALIZED BY DEPARTMENT OF TALLION, TAXES, PAID, WHEN PAID, Number of Receipt, March Settlement, June Settlement, Penalty Settlement, Collections to First Monday in January, Delinquent on First Monday in January, Total Delinquent Tax and Penalty, REMARKS. Includes handwritten entries for lots 1-20 and names like Harold C. & Emma C. Kramer.

Assessment Roll and Tax List of Real Property in the Town of Water

* Indicate Type of Property: R-Residential, C-Commercial, I-Industrial, U-Utility, F-Farm, L-Lakeshore, T-Timber, M-Mineral

Table with columns: IN WHOSE NAME ASSESSED, TO WHOM TRANSFERRED, DESCRIPTION OF PROPERTY, TRUE AND FULL VALUATIONS, ASSESSED VALUATIONS, FINAL EQUALIZED VALUE.

Cass County, Minnesota, for Taxes for the Year 1958.

Table with columns: SOLD FOR TAXES, VALUATIONS BY SCHOOL DISTRICTS AS EQUALIZED BY DEPARTMENT OF TAXATION, PAID, WHEN PAID, REMARKS.

Assessment Roll and Tax List of Real Property in the Town of Water

Form SCD 6-15-58 BY STATE OF MINNESOTA

* Indicate Type of Property: R-Residential, C-Commercial, I-Industrial.

IN WHOSE NAME ASSESSED	TO WHOM TRANSFERRED	DESCRIPTION OF PROPERTY				TRUE AND FULL VALUATIONS							REMARKS				
		SUBDIVISION	Sec. or Lot	Town or Block	Rng.	Number of Acres of Land	No. School District	Indicate Homestead Yes or No	Indicate Agricultural Yes or No	Indicate Type of Property	LAND			MACHINERY	TOTAL	RURAL	
											Exclusion of Structures and Improvements	Buildings and Other Structures				Permanently Attached to Real Estate	True and Full Value
					Dollars	Dollars	Dollars	Dollars	Dollars	Dollars	Dollars	Dollars	Dollars	Dollars			
1		NE 1/4 of NE 1/4															
2		NW 1/4 of NE 1/4															
3		SW 1/4 of NE 1/4															
4		SE 1/4 of NE 1/4															
5																	
6		NE 1/4 of NW 1/4															
7		NW 1/4 of NW 1/4															
8		SW 1/4 of NW 1/4															
9		SE 1/4 of NW 1/4															
10																	
11		NE 1/4 of SW 1/4															
12		NW 1/4 of SW 1/4															
13		SW 1/4 of SW 1/4															
14		SE 1/4 of SW 1/4															
15																	
16		NE 1/4 of SE 1/4															
17		NW 1/4 of SE 1/4															
18		SW 1/4 of SE 1/4															
19		SE 1/4 of SE 1/4															
20																	

PAGES

39

THRU

46

BLANK

Cass County, Minnesota, for Taxes for the Year 1958.

strict c..... ..Mills	Tax including State Homestead	State Tax on Non-Homestead	SPECIAL TAXES	TOTAL TAXES	PAID	WHEN PAID	Number of Receipt	March	June	Penalty	November	Penalty	Collections to First Monday in January 1960	Penalty	Delinquent on First Monday in January 1960	Penalty	Total Delinquent Tax and Penalty	REMARKS	
								Settlement 1959	Settlement 1959		Settlement 1959		Monday in January 1960	Monday in January 1960					
Dollars	\$ cts.	\$ cts.	\$ cts.	\$ cts.		Month Day Year		\$ cts.	\$ cts.	\$ cts.	\$ cts.	\$ cts.	\$ cts.	\$ cts.	\$ cts.	\$ cts.	\$ cts.		
						1													
						2													
						3													
						4													
						5													
						6													
						7													
						8													
						9													
						10													
						11													
						12													
						13													
						14													
						15													
						16													
						17													
						18													
						19													
						20													

LAKESIDE PARK

Assessment Roll and Tax List of Real Property in the Town of Lake Park, of State

* Indicate Type of Property: R-Residential, C-Commercial, I-Industrial, U-Utility, F-Farm, L-Lakeshore, T-Timber, M-Mineral

Form 50 - MILLAGE RATE REPORT, MINNESOTA

DESCRIPTION OF PROPERTY

TRUE AND FULL VALUATIONS

ASSESSED VALUATIONS

Table with columns: IN WHOSE NAME ASSESSED, TO WHOM TRANSFERRED, SUBDIVISION, Sec. or Lot, Town or Block, Rng., Number of Acres of Land, No. School District, Indicate Homestead Yes or No, Indicate Agricultural Yes or No, Indicate Type of Property, LAND Exclusive of Structures and Improvements, BUILDINGS and Other Structures, MACHINERY Permanently Attached to Real Estate, TOTAL True and Full Value, RURAL (Over \$4,000 and Non-Homestead 20%, Timber Land Class 3c 20%), ALL OTHER (Homestead Up to \$1,000 25%, Over \$1,000 and Non-Homestead 40%), MACHINERY Permanently Attached to Real Estate 33 1/3%, TOTAL ASSESSED VALUE, Total Assessed Value as Equalized by the Board of Review, FINAL EQUALIZED VALUE.

Main data table with rows for property owners such as Robert A. & Myrtle A. Kasper, H. A. St. Kasper, Philip M. & Annette Kraglien, Carl F. & Chas. A. Speck, and Rose Nicklason. Columns correspond to the header table above.

Cass County, Minnesota, for Taxes for the Year 1958.

VALUATIONS BY SCHOOL DISTRICTS AS EQUALIZED BY DEPARTMENT OF TAXATION

Table with columns: SOLD FOR TAXES, District No., District Rate, District No., District Rate, District No., District Rate, Tax including State Homestead, State Tax on Non-Homestead, SPECIAL TAXES, TOTAL TAXES, PAID, WHEN PAID (Month, Day, Year), Number of Receipt, March Settlement 1959, June Settlement 1959, Penalty, November Settlement 1959, Penalty, Collections to First Monday in January 1960, Penalty, Delinquent on First Monday in January 1960, Total Delinquent Tax and Penalty, REMARKS.

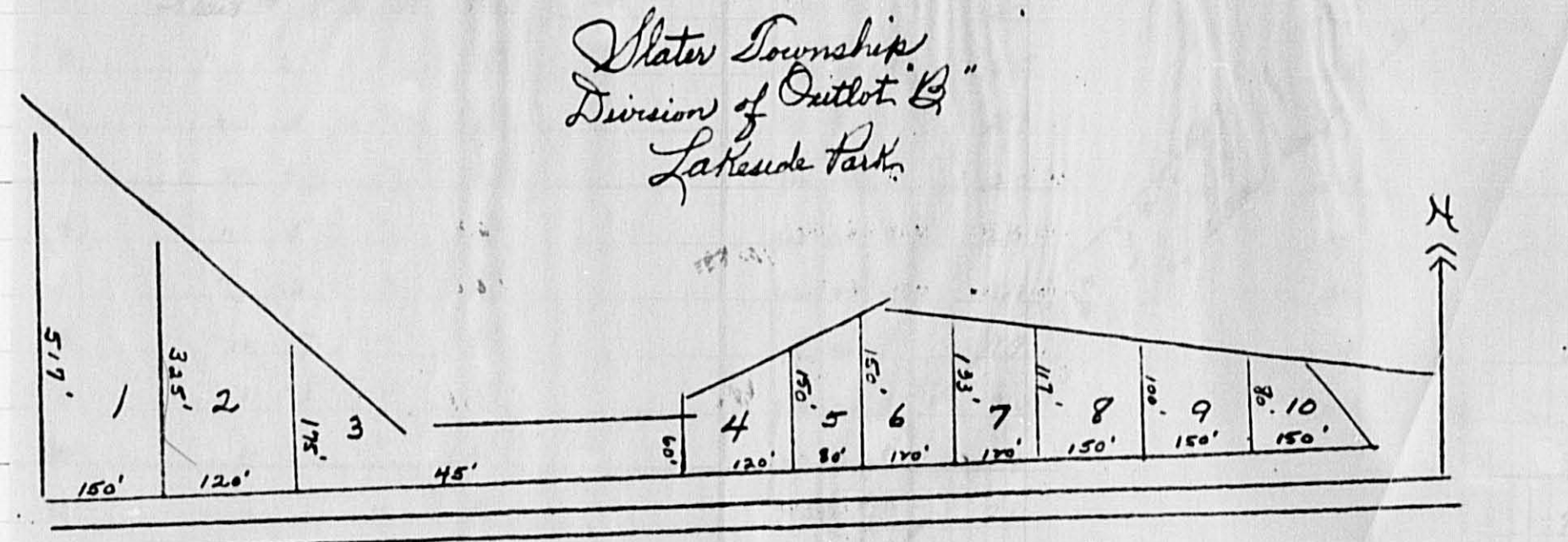
Main data table for tax details with rows corresponding to the property owners in the first table. Includes columns for taxes, payments, and remarks such as 'PAID IN FULL', 'PART PAID', and '2nd HALF PAID'.

Form 3C

LAKESIDE PARK

IN WHOSE NAME ASSESSED TO WHOM TRANSFERRED

Delbert H. & Maxine L. Bridge
Henry P. Boos
Benjamin Magnuson
A. E. & Lelah Peterson
Robert A. & Myrtle Kasper
H. A. St. Kasper
 "
P. M. Kjauglien
Carl P. & Eva A. Speck
Rose Nickleson
A. L. Erickson



Lots 1: Henry Boos
2: Benjamin Magnuson
3: A. E. & Lelah Peterson
4: Robert A. & Myrtle Kasper
5: H. A. St. Kasper
Lots 6: H. A. St. Kasper
7: P. M. Kjauglien
8: Carl & Eva Speck
9: Rose Nickleson
10: A. L. Erickson

State Township
Division of Outlot B
Lakeside Park

389 1430 1769 205 248

Farm, L-Lakeshore, T-Timber, M-Mineral

VALUATIONS				FINAL EQUALIZED VALUE Dollars
OTHER	MACHINERY	TOTAL ASSESSED VALUE	Total Assessed Value as Equalized by the Board of Review	
Over \$4,000 and Non-Homestead 40%	Permanently Attached to Real Estate 33 1/8%			
		394		
		9		
		5		
		9		
		4		
		4		
		4		
		4		
		7		
		7		

SOLD FOR TAXES	VALUATIONS BY SCHOOL DISTRICTS AS EQUALIZED BY DEPARTMENT OF TAXATION						Tax Including State Homestead Mills	State Tax on Non-Homestead Mills	SPECIAL TAXES	TOTAL TAXES	PAID	WHEN PAID	Number of Receipt	March Settlement 1959	June Settlement 1959	Penalty	November Settlement 1959	Penalty	Collections to First Monday in January 1960	Penalty	Delinquent on First Monday in January 1960	Total Delinquent Tax and Penalty	REMARKS
	District No.	District No.	District No.	District No.	District No.	District No.																	
1						184																	
						210																	
2						9																	
						5																	
3						5																	
						9																	
4						9																	
						4																	
5						4																	
						4																	
6						4																	
						4																	
7						4																	
						4																	
8						6																	
						4																	
9						4																	
						7																	
10						7																	
						7																	
11						7																	
12																							
13																							
14																							
15																							
16																							
17																							
18																							
19																							
20																							

Cass County, Minnesota, for Taxes for the Year 1958.

M 205
248
453

11510 160 11670

6390 5124

156

