

ASSESSMENT & TAX LIST - 1957

Slater































































































































































Assessment Roll and Tax List of Real Property in the Louis of Waters

Form SCD (56) BULLOCK-BAY COMPANY, MINNEAPOLIS

\* Indicate Type of Property: R-Residential, C-Commercial, I-Industrial, U-Utility, F-Farm, L-Lakeshore, T-Timber, M-Mineral

Table with columns: IN WHOSE NAME ASSESSED, TO WHOM TRANSFERRED, DESCRIPTION OF PROPERTY, TRUE AND FULL VALUATIONS, ASSESSED VALUATIONS, FINAL EQUALIZED VALUE. Includes handwritten entries for various property owners like Geo. Backstrom, Andrew & Ruth Olson, etc.

37610

Cass County, Minnesota, for Taxes for the Year 1957.

Table with columns: SOLD FOR TAXES, VALUATIONS BY SCHOOL DISTRICTS AS EQUALIZED BY DEPARTMENT OF TAXATION, SPECIAL TAXES, TOTAL TAXES, PAID, WHEN PAID, Number of Receipt, March Settlement 1958, June Settlement 1958, November Settlement 1958, Collections to First Monday in January 1959, Delinquent on First Monday in January 1959, Total Delinquent Tax and Penalty, REMARKS. Includes handwritten entries for various property owners and tax amounts.

SOLD FOR TAXES

SOLD FOR TAXES

SOLD FOR TAXES

SOLD FOR TAXES

SOLD FOR TAXES

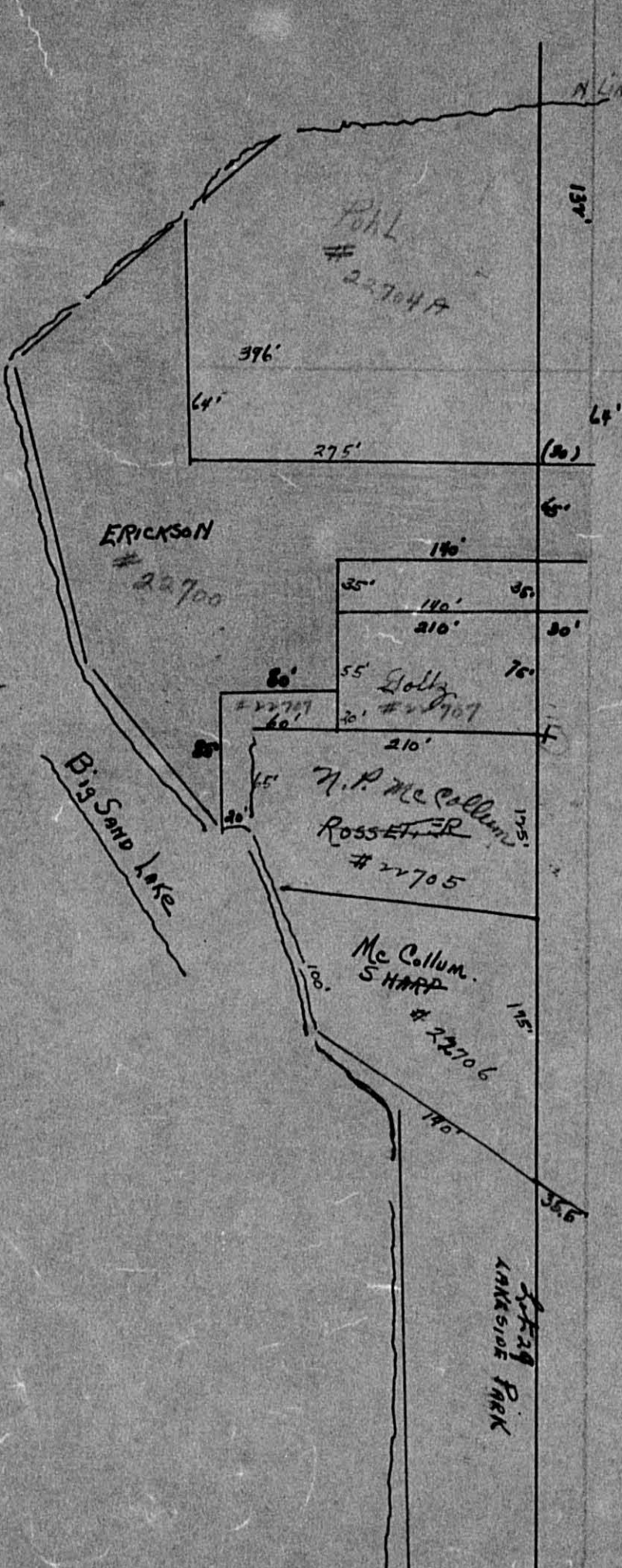
Lakeside Park

PERSONAL



Lot 5-34-142-26

227-4-57



Lot 4

E1 W LINE

ERICKSON  
# 22700

POHL  
# 22704A

396'  
64'  
275'

A LINE

137'

64'  
(20)

140'

35' 140' 35'  
210' 30'

227-864

55' 76'  
# 22707

N.P. McCollum  
ROSSETER  
# 22705

McCollum  
SHARP  
# 22706

Big Sand Lake

LAKESIDE PARK























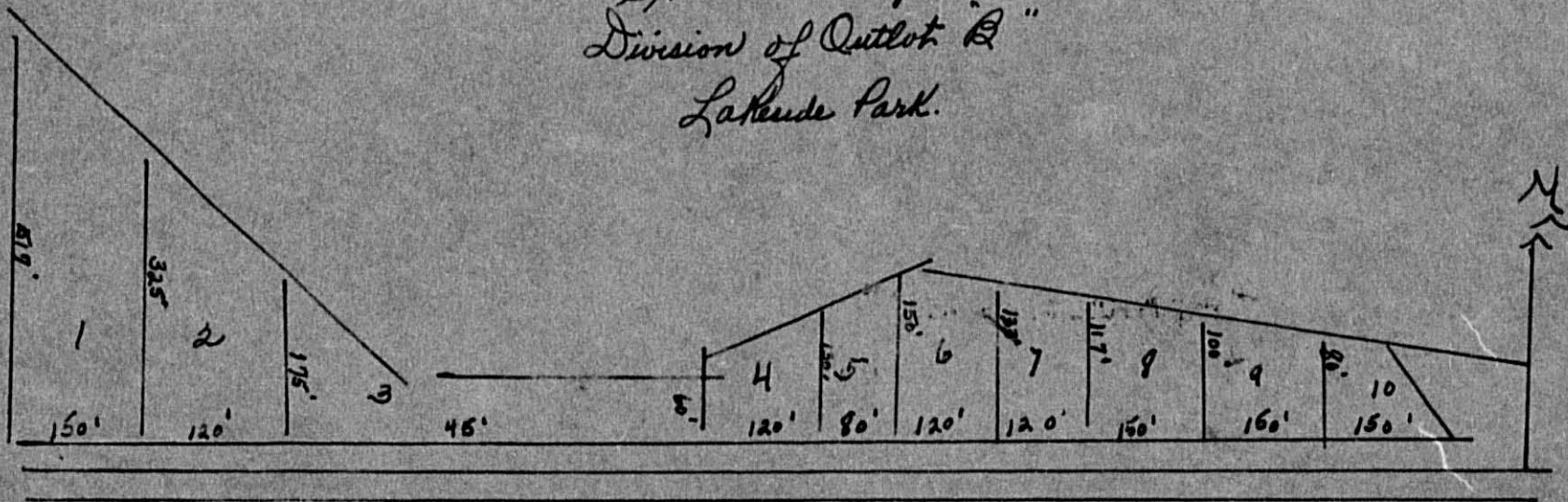








Slater Township  
 Division of Outlot "B"  
 Lakeude Park.



- Lots 1: Harry Boos  
 2: Benjamin Magnuson  
 3: A. C. & Selah Peterson  
 4: Robert A. & Myrtle Kasper  
 5: H. A. W. Kasper

- Lots 6: H. A. W. Kasper  
 7: P. M. Nyaglin  
 8: Carl & Elna Speck  
 9: Rosa Muckeson  
 10: A. S. Erickson



