

Assessment & Tax List - 1961

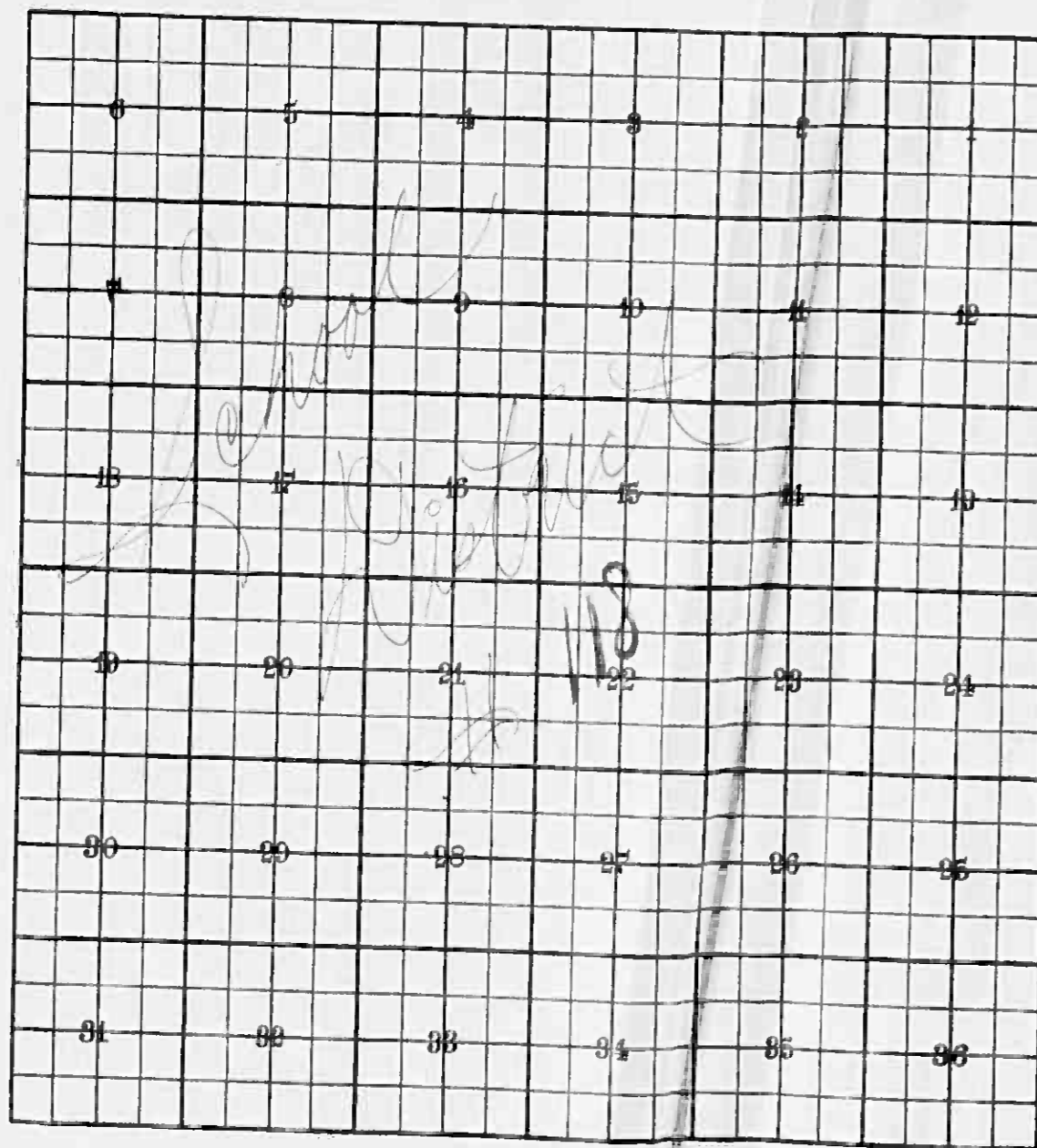
Slater

INDEX TO SECTIONS

SECTION	PAGE
Sec. 1	
" 2	
" 3	
" 4	
" 5	
" 6	
" 7	
" 8	
" 9	
" 10	
" 11	
" 12	
" 13	
" 14	
" 15	
" 16	
" 17	
" 18	
" 19	
" 20	
" 21	
" 22	
" 23	
" 24	
" 25	
" 26	
" 27	
" 28	
" 29	
" 30	
" 31	
" 32	
" 33	
" 34	
" 35	
" 36	

For Convenience of Auditor in Showing Boundaries of School Districts

Township No. 142 Range No. 26 Mer. P. M.



Returns Showing Grain Received in or Handled by Elevators, Warehouses and Mills in the _____ of _____ in the
County of _____ for the Year Ending May 1, 1961.

NAMES OF OWNERS	ADDRESS	Bushels of Wheat	Bushels of Soy Beans	Bushels of Flax	Total No. of Bushels of Wheat, Soy Beans and Flax	★ Tax of Mill per Bushel		Bushels of Corn	Bushels of Barley	Bushels of Rye	Bushels of Oats	Bushels of Buckwheat	Bushels of all Other Grains	Total No. Bushels Corn, Barley, Rye, Oats, Buckwheat and all Other Grains	★ Tax of Mill Per Bushel		★ Total Tax		REMARKS
						Dollars	Cts.								Dollars	Cts.	Dollars	Cts.	

Note ★ Assessors will not fill these Columns

Assessment of T

NAME OF OWNER

TABULAR SCHEDULE OF VALUATIONS, RATES AND TAXES

RATES AND TAXES

LEVIED IN THE Town OF State

COUNTY OF CASS, STATE OF MINNESOTA

School District No.	VALUATION BY SCHOOL DISTRICTS				RATE OF STATE TAXES Total Rate of State Tax Mills	RATE OF COUNTY TAXES					RATE OF TOWN TAXES					RATE OF SCHOOL TAXES					TAXES LEVIED		ALL OTHER TAXES													
	Agricultural Lands Dollars	Non-Agricultural Lands Dollars	Personal Property Dollars	Total Value of all Property except Money and Credits Dollars		Rev.	R. & H.	Welfare	Bonds and Int.	Def. PERA	Total Rate of County Tax Mills	Rev.	R. & B.	State Loan	B&D	Total Rate of Town Tax Mills	Local	Special	State Loan	Def. PERA	Tuition	Transportation	Total Rate of Sch'l Tax Mills	Total Rate of all Taxes Mills	LOCAL 1 MILL AND SPECIAL SCHOOL TAXES BY DISTRICTS	ALL OTHER TAXES										
118	12,465	3853	2298	20,847	H. 6.39	36.86	20	57.3	10.89	5.67	134.97	4.8	4.8	4.8	34.55	25	6.42	44.5	4.98	5.17	7.22	93.29	269.2	369.07	94.78	656.95	73.52	76.32	106.59	1377.23	State - Non-Homestead	119.29				
			2231	14,267																					304.20	39.06	270.74	30.30	31.45	43.93	717.68	State - Homestead	125.64			
				4529																					673.27	133.84	927.69	103.82	107.77	150.52	2096.91	County Revenue	768.46			
				14,267																																
				4529																																
				20,847																																
				4529																																
				1187																																
				3342																																
				4529																																

Total Levies, \$ 5875.86

Total Number of Acres 3815.24

State of Minnesota, ss

COUNTY OF CASS

Witness my hand and official seal, this 5th day of January, A. D. 1961

By Helen Bilbo, Deputy Auditor

Total Taxes Real Estate 4578.00

Pera Prop. 1297.86

Total 5875.86

Assessment of T.

COLLECTIONS OF TAXES OF 1961

Town of Slater

CASS COUNTY, MINNESOTA

Form 336 - MARCH 1961 DEPARTMENT OF REVENUE

NAME OF OWNER

1

2

3

4

5

6

7

FUNDS	MARCH SETTLEMENT 1962	JUNE SETTLEMENT 1962	NOV. SETTLEMENT 1962	Amount Collected from Nov. 1962 to First Monday in Jan. 1963	REDUCTIONS	Total Reductions and Collect	BALANCE UNCOLLECTED	ADDITIONS	Total Uncollected to First Monday in January, 1963
State-Non-Homestead,	1787	5012	2326	36					
State-Homestead,	1519	5085	2965	254					
County Revenue,	11898	30106	17461	1579					
County Road and Bridge,	6456	16335	9474	856					
County Welfare,	18496	46801	27144	2454					
County Bond and Interest,	352	890	516	47					
C. H. Bldg.	646	1634	947	86					
Agri. Bldg.	161	408	237	21					
Civ. Bldg.	213	539	313	28					
Town Revenue,	1549	3921	2274	206					
Town Road and Bridge,	1549	3921	2274	206					
Town State Loan,									
B. & S.	6505	16457	9545	862					
Fire	1549	3921	2274	206					
School Local 1 Mill,									
School Special,	12208	25209	14890	1781					
School State Loan,	2072	5244	3041	267					
Deficiency	14364	36346	21080	1898					
Fuition C.O.	1607	4067	2359	205					
Transportation									
PERA	2332	5899	3421	304					
B. & S.	1668	4222	2449	213					
W. & S. Bldg.	3515	8895	5159	465					
PERA	1829	4631	2687	241					
	92375	229543	132836	12265					

School District No.	LOCAL 1 MILL.	SPECIAL.	STATE LOAN	Deficiency	C.O.	PERA	B. & S.	TOTALS
118a		3832	984	6821	763	1107	792	14299
1187a		8476	1088	7543	844	1225	876	20052
Totals		12308	2072	14364	1607	2332	1668	34351
118a		15630	4014	27821	3113	4515	3232	58325
1187a		9579	1230	8525	954	1384	990	22662
Totals		25209	5244	36346	4067	5899	4222	80987
118a		8796	2259	75657	1752	2540	1819	32823
1187a		6094	782	5423	607	881	630	14417
Totals		14890	3041	21080	2359	3421	2449	47240
118a		348	86	623	66	100	69	1292
1187a		1433	181	1275	139	204	144	3376
Totals		1781	267	1898	205	304	213	4668
ADDITIONS								
Totals								
REDUCTIONS								
Totals								

Part of
Slater Park

Assessment Roll and Tax List of Real Property in the Town of State of State

Cass County, Minnesota, for Taxes for the Year 1961.

REGULATED BY MILLER-DAVIS CO., MINNEAPOLIS

* Indicate Type of Property: R-Residential, C-Commercial, I-Industrial, U-Utility, F-Farm, L-Lakeshore, T-Timber, M-Mineral

Table with columns for IN WHOSE NAME ASSESSED, DESCRIPTION OF PROPERTY, TRUE AND FULL VALUATIONS, ASSESSED VALUATIONS, VALUATIONS BY SCHOOL DISTRICTS AS EQUALIZED BY DEPARTMENT OF TAXATION, and TAXES. Includes rows for U.S. of America and State of Minnesota.

Part of Park
Lakeside Park

Assessment Roll and Tax List of Real Property in the Down of State

* Indicate Type of Property: R-Residential, C-Commercial, I-Industrial, U-Utility, F-Farm, L-Lakeshore, T-Timber, M-Mineral

IN WHOSE NAME ASSESSED	DESCRIPTION OF PROPERTY				No. School District	Indicate Homestead Yes or No	Agricultural Recr. Yes or No	Indicate Type of Property	TRUE AND FULL VALUATIONS				ASSESSED VALUATIONS						FINAL EQUALIZED VALUE		
	SUBDIVISION	Sec. or Lot	Town or Block	Number of Acres of Land					LAND Structures and Improvements	BUILDINGS and Other Structures	MACHINERY Permanently Attached to Real Estate	TOTAL True and Full Value	RURAL		ALL OTHER		MACHINERY Permanently Attached to Real Estate	Seasonal and Recreational Cabins		TOTAL ASSESSED VALUE	Total Assessed Value as Equalized by the Board of Review
													Acres 000ths	Homestead Up to \$4,000 20%	Over \$4,000 and Non-Homestead 33 1/3%	Timber Land Class 3e 20%					
<i>Heads J. Moody, Edward Frederick & Wey Ronald Muddoy</i>	NW 1/4 of NW 1/4	7	142 26	3575	118	NO	YES	7													
" " " " "	NW 1/4 of NW 1/4			10		NO	"	"													
State of Minnesota	SE 1/4 of NW 1/4			10		NO	"	"													
<i>Heads J. Moody, Edward Frederick & Wey Ronald Muddoy</i>	SE 1/4 of NW 1/4			10		NO	"	"													
<i>John H. & Hilma M. Danich</i>	NW 1/4 of NW 1/4			10		YES	YES	7													
" " " " "	NW 1/4 of NW 1/4 GOVT LOT 1			10 90		YES	"	"													
State of Minnesota	SW 1/4 of NW 1/4 GOVT LOT 2																				
U. S. of America	SE 1/4 of NW 1/4																				
U. S. of America	NW 1/4 of NW 1/4																				
U. S. of America	NW 1/4 of SW 1/4 GOVT LOT 3																				
U. S. of America	SW 1/4 of SW 1/4 GOVT LOT 4																				
U. S. of America	SE 1/4 of SW 1/4																				
<i>Heads J. Moody, Edward Frederick & Wey Ronald Muddoy & Donald Coth</i>	NW 1/4 of SE 1/4			10		NO	YES	7													
State of Minnesota	NW 1/4 of SE 1/4																				
State of Minnesota	SW 1/4 of SE 1/4																				
State of Minnesota	SE 1/4 of SE 1/4																				

276 68

Cass County, Minnesota, for Taxes for the Year 1961.

SOLID FOR TAXES	VALUATIONS BY SCHOOL DISTRICTS AS EQUALIZED BY DEPARTMENT OF TAXATION	Tax Including State Homestead	State Tax on Non-Homestead	SPECIAL TAXES	SPECIAL TAXES	TOTAL TAXES	PAID	WHEN PAID	Number of Receipt	March Settlement 1962	June Settlement 1962	Penalty	November Settlement 1962	Penalty	Collections to First Monday in January 1963	Penalty	Delinquent on First Monday in January 1963	Total Delinquent Tax and Penalty	REMARKS					
																				District No. Rate	District No. Rate	District No. Rate	District No. Rate	District No. Rate
																				Dollars Dollars	Dollars Dollars	Dollars Dollars	Dollars Dollars	Dollars Dollars
1	<i>H 118</i>																							
2	<i>H 118</i>																							
3																								
4	<i>H 118</i>																							
5																								
6	<i>H 118</i>																							
7	<i>H 118</i>																							
8																								
9																								
10																								
11																								
12																								
13																								
14																								
15																								
16	<i>H 118</i>																							
17																								
18																								
19																								
20	<i>H 118</i>																							

H 118 137 715

24634 670

23304

15048

10256

Part of Lakeside Park

Assessment Roll and Tax List of Real Property in the Town of Shelby

* Indicate Type of Property: R-Residential, C-Commercial, I-Industrial, U-Utility, F-Farm, L-Lakeshore, T-Timber, M-Mineral

IN WHOSE NAME ASSESSED	DESCRIPTION OF PROPERTY				No. School District	Indicate Homestead View or No	Agricultural or Recreational Use or No	Indicate Type of Property	TRUE AND FULL VALUATIONS				ASSESSED VALUATIONS					Total Assessed Value as Equalized by the Board of Review	FINAL EQUALIZED VALUE
	SUBDIVISION	Sec. or Lot	Town or Block	Number of Acres of Land					LAND Exclusive of Structures and Improvements	BUILDINGS and Other Structures	MACHINERY Permanently Attached to Real Estate	TOTAL True and Full Value	HOMESTEAD	ALL OTHER	MACHINERY	Seasonal and Recreational Cabins	TOTAL ASSESSED VALUE		
			Acres 100ths					Dollars	Dollars	Dollars	Dollars	Dollars	Dollars	Dollars	Dollars	Dollars	Dollars		
U. S. of America			8 1/2 28	118															
U. S. of America																			
U. S. of America																			
U. S. of America																			
Mary E. & Evelyn L. Pohl			52 1/3		118	YES	YES	7											
U. S. of America																			
Glady S. Moody, Edward Frederick & Rex Donald Maddox			50 1/4			NO	YES	7											
Mary E. & Evelyn L. Pohl			49 85			YES	YES	7											
Mary E. & Evelyn L. Pohl			46 30			YES	YES	7											
U. S. of America			46 30			NO	YES	7											
U. S. of America			40			YES	YES	7											
U. S. of America																			
Mary E. & Evelyn L. Pohl			36 50			YES	YES	7											
U. S. of America			42 50			YES	YES	7											
U. S. of America																			
State of Minnesota			5 1/3 07 SW 1/4 07 SW 1/4																
			364 33																

Cass County, Minnesota, for Taxes for the Year 1961.

SOLD FOR TAXES	VALUATIONS BY SCHOOL DISTRICTS AS EQUALIZED BY DEPARTMENT OF TAXATION						Tax Including State Homestead	State Tax on Non-Homestead	SPECIAL TAXES	SPECIAL TAXES	TOTAL TAXES	PAID	WHEN PAID	Number of Receipt	March Settlement 1962	June Settlement 1962	Penalty	November Settlement 1962	Penalty	Collections to First Monday in January 1963	Penalty	Delinquent on First Monday in January 1963	Total Delinquent Tax and Penalty	REMARKS
	District No. 118	District No. 118	District No. 118	District No. 118	District No. 118	District No. 118																		
	42						1130				1130												15 72 1/2 10668	
	60						1616	54			1670												8 35 9/18 10666	
	54						1454				1454												7 27 10662	
	483						13002				13002												6 50 1 6 50 1 10667	
	60						1616	54			1670												8 35 9/18 10666	
	30						808				808												4 04 4 04 10662	
	36						970				970												4 85 4 85 10668	
	46						1238				1238												6 19 6 19 10668	
	691						21834	108			21942												109 71 93 01 16 70	

Plat of Lakosig Park

Assessment Roll and Tax List of Real Property in the

of State
* Indicate Type of Property: R-Residential, C-Commercial, I-Industrial, U-Utility, F-Farm, L-Lakeshore, T-Timber, M-Mineral

Cass County, Minnesota, for Taxes for the Year 1961.

Table with columns: IN WHOSE NAME ASSESSED, DESCRIPTION OF PROPERTY, TRUE AND FULL VALUATIONS, ASSESSED VALUATIONS, VALUATIONS BY SCHOOL DISTRICTS AS EQUALIZED BY DEPARTMENT OF TAXATION, TAX INCLUDING STATE HOMESTEAD, SPECIAL TAXES, TOTAL TAXES, PAID, WHEN PAID, Number or Receipt, March Settlement 1962, June Settlement 1962, Penalty, November Settlement 1962, Penalty, Collections to First Monday in January 1963, Delinquent on First Monday in January 1963, Total Delinquent Tax and Penalty, REMARKS. Includes entries for Robert J. & Gladys M. Clark, Pearl & Mabel Garnett Jansel, A.M. King, Bayard C. & La Jean M. Sigler, Pearl & Mabel Garnett Jansel, John & Emma Nelson, Chas. H. Klein, et al, Anthony L. & Hazel Bente, John J. & Delila G. Ludwig, Alfred W. & Genevieve N. Aegerter, John J. & Delila G. Ludwig.

Assessment Roll and Tax List of Real Property in the Dodge of State
* Indicate Type of Property: R-Residential, C-Commercial, I-Industrial, U-Utility, F-Farm, L-Lakeshore, T-Timber, M-Mineral

Cass County, Minnesota, for Taxes for the Year 1961.

Table with columns for IN WHOSE NAME ASSESSED, DESCRIPTION OF PROPERTY, TRUE AND FULL VALUATIONS, ASSESSED VALUATIONS, VALUATIONS BY SCHOOL DISTRICTS AS EQUALIZED BY DEPARTMENT OF TAXATION, TAXES, PAID, WHEN PAID, and REMARKS.

Real Estate

Part of Park Lake State Park

Personal

Assessment Roll and Tax List of Real Property in the Dodge of South

* Indicate Type of Property: R-Residential, C-Commercial, I-Industrial, U-Utility, F-Farm, L-Lakeshore, T-Timber, M-Mineral

Cass County, Minnesota, for Taxes for the Year 1961.

IN WHOSE NAME ASSESSED	DESCRIPTION OF PROPERTY SUBDIVISION	Sec. of Lot	Town or Block	Range	Number of Acres of Land	No. School District	Indicate Homestead Yes or No	Agricultural Yes or No	Indicate Type of Property	TRUE AND FULL VALUATIONS										SOLD FOR TAXES	VALUATIONS BY SCHOOL DISTRICTS AS EQUALIZED BY DEPARTMENT OF TAXATION						PAID	WHEN PAID Month Day Year	Number of Receipt	March Settlement 1962	June Settlement 1962	Penalty	November Settlement 1962	Penalty	Collections to First Monday in January 1963	Penalty	Delinquent on First Monday in January 1963	Total Delinquent Tax and Penalty	REMARKS									
										LAND Exclusive of Structures and Improvements	BUILDINGS and Other Structures	MACHINERY Permanently Attached to Real Estate	TOTAL True and Full Value	RURAL			ALL OTHER				TOTAL ASSESSED VALUE	Total Assessed Value as Equalized by the Board of Review	FINAL EQUALIZED VALUE	District No.	District No.	District No.														District No.	District No.	District No.	Tax including State Homestead	State Tax on Non-Homestead	SPECIAL TAXES	SPECIAL TAXES	TOTAL TAXES	
														Homestead Up to \$4,000 20%	Over \$4,000 and Non-Homestead 33 1/3%	Timber Land Class 3e 20%	Homestead Up to \$4,000 25%	Over \$4,000 and Non-Homestead 40%	MACHINERY Permanently Attached to Real Estate 33 1/3%																													Seasonal and Recreational Cabins 33 1/3%
U. S. of America	1				17 142 26	118																																										
<i>Eunice J. & Dorothy M. Reinisch</i>	2				to		Yes	Yes	7																										2450	2696	17740											
"	3				to		Yes	Yes	7																									1292	1421													
U. S. of America	4																																															
U. S. of America	5																																															
State of Minnesota	6																																															
U. S. of America	7																																															
U. S. of America	8																																															
U. S. of America	9																																															
U. S. of America	10																																															
State of Minnesota	11																																															
U. S. of America	12																																															
U. S. of America	13																																															
State of Minnesota	14																																															
U. S. of America	15																																															
U. S. of America	16																																															
U. S. of America	17																																															
U. S. of America	18																																															
U. S. of America	19																																															
U. S. of America	20																																															

Plat of Park
Lakeside Park

Assessment Roll and Tax List of Real Property in the

Town of *Stater*

* Indicate Type of Property: R-Residential, C-Commercial, I-Industrial, U-Utility, F-Farm, L-Lakeshore, T-Timber, M-Mineral

Cass County, Minnesota, for Taxes for the Year 1961.

IN WHOSE NAME ASSESSED	DESCRIPTION OF PROPERTY				No. School District	Indicate Homestead Yes or No	Agricultural Yes or No	Indicate Type of Property	TRUE AND FULL VALUATIONS											SOLD FOR TAXES	VALUATIONS BY SCHOOL DISTRICTS AS EQUALIZED BY DEPARTMENT OF TAXATION						Taxes including State Homestead	State Tax on Non-Homestead	SPECIAL TAXES	SPECIAL TAXES	TOTAL TAXES	PAID	WHEN PAID	Number or Receipt	March Settlement 1962	June Settlement 1962	Penalty	November Settlement 1962	Penalty	Collections to First Monday in January 1963	Penalty	Delinquent on First Monday in January 1963	Total Delinquent Tax and Penalty	REMARKS										
	Sec. of Lot	Town or Block	Rng.	Number of Acres of Land					LAND Exclusive of Structures and Improvements	BUILDINGS and Other Structures	MACHINERY Permanently Attached to Real Estate	TOTAL True and Full Value	RURAL			ALL OTHER					TOTAL ASSESSED VALUE	Total Assessed Value as Equalized by the Board of Review	FINAL EQUALIZED VALUE	District No.	District No.	District No.																			District No.	District No.	District No.	Rate	Rate	Rate	Rate	Rate	Rate	\$
State of Minnesota				25142 26																																																		
State of Minnesota																																																						
State of Minnesota																																																						
State of Minnesota																																																						
State of Minnesota																																																						
State of Minnesota																																																						
State of Minnesota																																																						
State of Minnesota																																																						
State of Minnesota																																																						
State of Minnesota																																																						
State of Minnesota																																																						
State of Minnesota																																																						
State of Minnesota																																																						
State of Minnesota																																																						
State of Minnesota																																																						
State of Minnesota																																																						

Plat of Park Lakeside Park

Assessment Roll and Tax List of Real Property in the Town of State

Cass County, Minnesota, for Taxes for the Year 1961.

Form 502 MILLER-DAVIS CO., MINNEAPOLIS

* Indicate Type of Property: R-Residential, C-Commercial, I-Industrial, U-Utility, F-Farm, L-Lakeshore, T-Timber, M-Mineral

Table with columns for Assessment Roll and Tax List. Includes property descriptions, valuations, taxes, and payment status for the year 1961.

Assessment Roll and Tax List of Real Property in the Town of Cass of Minnesota

* Indicate Type of Property: R-Residential, C-Commercial, I-Industrial, U-Utility, F-Farm, L-Lakefront, T-Timber, M-Mineral

Cass County, Minnesota, for Taxes for the Year 1961.

IN WHOSE NAME ASSESSED	DESCRIPTION OF PROPERTY	No. School District	Indicate Homestead Yes or No	Agricultural Yes or No	Indicate Type of Property	TRUE AND FULL VALUATIONS				VALUATIONS					SOLD FOR TAXES	VALUATIONS BY SCHOOL DISTRICTS AS EQUALIZED BY DEPARTMENT OF TAXATION						PAID	WHEN PAID	Number of Receipt	March Settlement 1962	June Settlement 1962	November Settlement 1962	Penalty	Collections to First Monday in January 1963	Penalty	Delinquent on First Monday in January 1963	Total Delinquent Tax and Penalty	REMARKS					
						LAND Exclusive of Structures and Improvements	BUILDINGS and Other Structures	MACHINERY Permanently Attached to Real Estate	TOTAL True and Full Value	General Property	Seasonal and Recreational cabins	TOTAL ASSESSED VALUE	Total Assessed Value as Equalized by the Board of Review	FINAL EQUALIZED VALUE		District No. 118	District No. 118	District No. 118	District No. 118	District No. 118	District No. 118													Tax including State Homestead	State Tax on Non-Homestead	SPECIAL TAXES	SPECIAL TAXES	TOTAL TAXES
U. S. of America	***** GOVT LOT 1 28-42-26	118																																				
U. S. of America	N W 1/4 of NW 1/4																																					
U. S. of America	S W 1/4 of NW 1/4 GOVT LOT 2																																					
U. S. of America	S E 1/4 of NW 1/4																																					
U. S. of America	N E 1/4 of NW 1/4																																					
U. S. of America	N W 1/4 of NW 1/4																																					
Harold C. + Emma C. Drammer	***** GOVT LOT 4	99	NO	YES	T																																	
U. S. of America	S E 1/4 of NW 1/4 GOVT LOT 3																																					
Donald L. Cone	***** GOVT LOT 5	2950	NO	NO	L																																	
Cass County Health Trust	***** GOVT LOT 6 LESS R/W																																					
Harold J. Fanth	***** W 1/4 of GOVT LOT 7		NO	NO	L																																	
Ellsworth H. Bates	W 1/2 of W 1/2 of NW 1/4 of GOVT LOT 7 LESS R/W		NO	"	"																																	
Willis R. Kemper	***** E 1/4 of W 1/2 of GOVT LOT 7	295	NO	YES	T																																	
Ernest H. + Mildred J. Snyder	***** W 1/4 of E 1/2 of GOVT LOT 7	295	NO	"	"																																	
Ernest H. + Stella Deane	***** E 1/2 of W 1/2 of E 1/2 GOVT LOT 7		NO	NO	L																																	
Harold J. + Leah K. Fanth	***** E 1/4 of GOVT LOT 7		NO	"	"																																	
Harold J. + Leah K. Fanth	S. 1/4 of NW 1/4																																					

Lot 7 Sec 28-142-26

W 1/4 Fanth

W 1/2 E 1/2 W 1/4 Bates

E 1/4 W 1/2 Kemper

W 1/4 E 1/2 Snyder

E 1/2 W 1/2 of E 1/2 Tobias

E 1/4 Fanth

→ E

CONT ON NEXT PAGE

Plat of Lakeside Park

Assessment Roll and Tax List of Real Property in the State of *Minnesota*

* Indicate Type of Property: R-Residential, C-Commercial, I-Industrial, U-Utility, F-Farm, L-Lakeshore, T-Timber, M-Mineral

Table with columns: IN WHOSE NAME ASSESSED, DESCRIPTION OF PROPERTY, TRUE AND FULL VALUATIONS, ASSESSED VALUATIONS, FINAL EQUALIZED VALUE.

Alexander B. & Myrtle C. Weidenbach
James & Margery Evenson
Deanna W. Rosemary West
Harold L. & Leah H. Deeth
Douglas Backwith & Lottie M. Cooper
James C. & Martha B. DeLuk

Cass County, Minnesota, for Taxes for the Year 1961.

Table with columns: VALUATIONS BY SCHOOL DISTRICTS AS EQUALIZED BY DEPARTMENT OF TAXATION, Tax Including State Homestead, SPECIAL TAXES, TOTAL TAXES, PAID, WHEN PAID, Number of Receipt, March Settlement 1962, June Settlement 1962, November Settlement 1962, Collections to First Monday in January 1963, Delinquent on First Monday in January 1963, Total Delinquent Tax and Penalty, REMARKS.

1st Half Paid OCT 31 1962
2nd Half Paid MAY 1 1962
PAID IN FULL MAY 31 1962
Part Paid JUL 30 1962
2nd HALF PAID AUG 20 1962
1st HALF PAID MAY 3 1962
PAID IN FULL MAY 3 1962

Plat of Park Lakes de Park

Assessment Roll and Tax List of Real Property in the Town of State

* Indicate Type of Property: R-Residential, C-Commercial, I-Industrial, U-Utility, F-Farm, L-Lakeshore, T-Timber, M-Mineral

NORTH S.D. MILLER-DAVIS CO., MINNEAPOLIS

Table with columns: IN WHOSE NAME ASSESSED, DESCRIPTION OF PROPERTY, TRUE AND FULL VALUATIONS, ASSESSED VALUATIONS, and FINAL EQUALIZED VALUE. Includes entries for Le Roy Griffin, U.S. of America, and various land parcels.

Cass County, Minnesota, for Taxes for the Year 1961.

Table with columns: VALUATIONS BY SCHOOL DISTRICTS AS EQUALIZED BY DEPARTMENT OF TAXATION, Tax Including State Homestead, SPECIAL TAXES, TOTAL TAXES, PAID, WHEN PAID, Number of Receipt, etc. Includes handwritten entries for taxes paid.

Part of Lakeside Park

Assessment Roll and Tax List of Real Property in the Town of State

* Indicate Type of Property: R-Residential, C-Commercial, I-Industrial, U-Utility, F-Farm, L-Lakeshore, T-Timber, M-Mineral

Form 500 MILLER-DAVIS CO., MINNEAPOLIS

IN WHOSE NAME ASSESSED	DESCRIPTION OF PROPERTY				No. School District	Indicate Homestead Yes or No	Agricultural Use Yes or No	Indicate Type of Property	TRUE AND FULL VALUATIONS							ASSESSED VALUATIONS							FINAL EQUALIZED VALUE	
	SUBDIVISION	Sec. or Lot	Town or Block	Rng.					Number of Acres of Land		LAND Exclusive of Structures and Improvements	BUILDINGS and Other Structures	MACHINERY Permanently Attached to Real Estate	TOTAL True and Full Value	RURAL		ALL OTHER			MACHINERY Permanently Attached to Real Estate	Seasonal and Recreational Cabins	TOTAL ASSESSED VALUE		Total Assessed Value as Equalized by the Board of Review
									Acres	100ths					Homestead Up to \$4,000 20%	Over \$4,000 and Non-Homestead 33 1/4%	Timber Land Class 3e 20%	Homestead Up to \$4,000 25%	Over \$4,000 and Non-Homestead 40%					
U. S. of America					118																			
U. S. of America																								
U. S. of America																								
State of Minnesota																								
U. S. of America																								
U. S. of America																								
U. S. of America																								
U. S. of America																								
U. S. of America																								
U. S. of America																								
U. S. of America																								
U. S. of America																								
U. S. of America																								
U. S. of America																								
U. S. of America																								
U. S. of America																								

Cass County, Minnesota, for Taxes for the Year 1961.

SOLD FOR TAXES	VALUATIONS BY SCHOOL DISTRICTS AS EQUALIZED BY DEPARTMENT OF TAXATION						Tax Including State Homestead	State Tax on Non-Homestead	SPECIAL TAXES	SPECIAL TAXES	TOTAL TAXES	PAID	WHEN PAID	Number or Receipt	March Settlement 1962	June Settlement 1962	Penalty	November Settlement 1962	Penalty	Collections to First Monday in January 1963	Penalty	Delinquent on First Monday in January 1963	Total Delinquent Tax and Penalty	REMARKS																
	District No.	District No.	District No.	District No.	District No.	District No.																			Rate	Rate	Rate	Rate	Rate	Rate	Rate	Rate	Rate	Rate	Rate	Rate	Rate	Rate	Rate	Rate
	Mills	Mills	Mills	Mills	Mills	Mills																																		

Plaza of Lakeside Park

Assessment Roll and Tax List of Real Property in the Dow of State

* Indicate Type of Property: R-Residential, C-Commercial, I-Industrial, U-Utility, F-Farm, L-Lakeshore, T-Timber, M-Mineral

Form 400 - MILLER-DAY CO., MINNEAPOLIS

Table with columns: IN WHOSE NAME ASSESSED, DESCRIPTION OF PROPERTY, TRUE AND FULL VALUATIONS, ASSESSED VALUATIONS, VALUATIONS BY SCHOOL DISTRICTS AS EQUALIZED BY DEPARTMENT OF TAXATION, TAXES, PAID, WHEN PAID, etc.

Plot of Lakoside Park

Assessment Roll and Tax List of Real Property in the Town of *Later*

* Indicate Type of Property: R-Residential, C-Commercial, I-Industrial, U-Utility, F-Farm, L-Lakeshore, T-Timber, M-Mineral

EDWIN SCD MILLER, DAVIS CO., MINNEAPOLIS

Table with columns: IN WHOSE NAME ASSESSED, SUBDIVISION, DESCRIPTION OF PROPERTY, TRUE AND FULL VALUATIONS, ASSESSED VALUATIONS, and FINAL EQUALIZED VALUE.

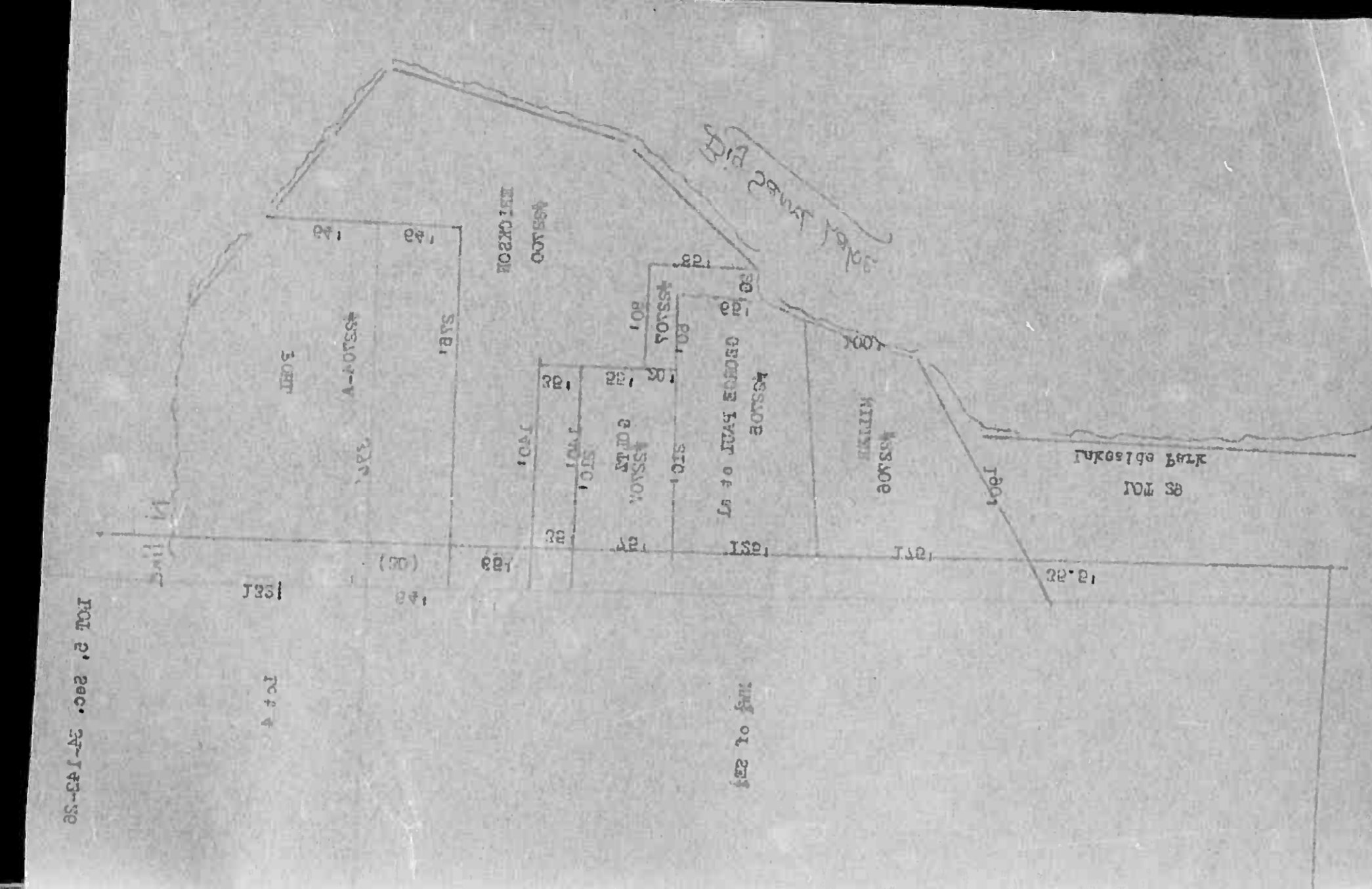
Cass County, Minnesota, for Taxes for the Year 1961.

Table with columns: VALUATIONS BY SCHOOL DISTRICTS AS EQUALIZED BY DEPARTMENT OF TAXATION, TAXES, PAID, WHEN PAID, and REMARKS.

Plat of Lakeside Park

Assessment Roll and Tax List of Real Property in the State of Minnesota

* Indicate Type of Property: R-Residential, C-Commercial, I-Industrial, U-Utility, F-Farm, L-Lakeshore, T-Timber, M-Mineral



Cass County, Minnesota, for Taxes for the Year 1961.

Table with columns: IN WHOSE NAME ASSESSED, DESCRIPTION OF PROPERTY, TRUE AND FULL VALUATIONS, ASSESSED VALUATIONS, VALUATIONS BY SCHOOL DISTRICTS AS EQUALIZED BY DEPARTMENT OF TAXATION, TAXES, PAID, WHEN PAID, Number of Receipt, March Settlement, June Settlement, November Settlement, Collections to First Monday in January, Delinquent on First Monday in January, Total Delinquent Tax and Penalty, REMARKS.

Assessment Roll and Tax List of Real Property in the Town of Lake of State

* Indicate Type of Property: R-Residential, C-Commercial, I-Industrial, U-Utility, F-Farm, L-Lakeshore, T-Timber, M-Mineral

Cass County, Minnesota, for Taxes for the Year 1961.

Table with columns: IN WHOSE NAME ASSESSED, DESCRIPTION OF PROPERTY, TRUE AND FULL VALUATIONS, ASSESSED VALUATIONS, VALUATIONS BY SCHOOL DISTRICTS AS EQUALIZED BY DEPARTMENT OF TAXATION, TAX INCLUDING STATE HOMESTEAD, SPECIAL TAXES, TOTAL TAXES, PAID, WHEN PAID, Number of Receipt, March Settlement 1962, June Settlement 1962, Penalty, November Settlement 1962, Collections to First Monday in January 1963, Delinquent on First Monday in January 1963, Total Delinquent Tax and Penalty, REMARKS.

Plot of Lakeside Park

Plot of Lakeside Park

Assessment Roll and Tax List of Real Property in the

Town of Sage of State
* Indicate Type of Property: R-Residential, C-Commercial, I-Industrial, U-Utility, F-Farm, L-Lakeshore, T-Timber, M-Mineral

Cass County, Minnesota, for Taxes for the Year 1961.

Table with columns for IN WHOSE NAME ASSESSED, DESCRIPTION OF PROPERTY, TRUE AND FULL VALUATIONS, ASSESSED VALUATIONS, VALUATIONS BY SCHOOL DISTRICTS AS EQUALIZED BY DEPARTMENT OF TAXATION, TAX, PAID, WHEN PAID, Number of Receipt, March Settlement 1962, June Settlement 1962, Penalty, November Settlement 1962, Collections to First Monday in January 1963, Delinquent on First Monday in January 1963, Total Delinquent Tax and Penalty, REMARKS.

Assessment Roll and Tax List of Real Property in the Town of Lake * Indicate Type of Property: R-Residential, C-Commercial, I-Industrial, U-Utility, F-Farm, L-Lakeshore, T-Timber, M-Mineral

Cass County, Minnesota, for Taxes for the Year 1961.

Table with columns: IN WHOSE NAME ASSESSED, SUBDIVISION (Lakeside Park), No. School District, Indicate Homestead, Indicate Property, TRUE AND FULL VALUATIONS (LAND, BUILDINGS, MACHINERY, TOTAL True and Full Value), ASSESSED VALUATIONS (RURAL, ALL OTHER, MICHINERY, Seasonal and Recreational Cabins, TOTAL ASSESSED VALUE), FINAL EQUALIZED VALUE.

Table with columns: VALUATIONS BY SCHOOL DISTRICTS AS EQUALIZED BY DEPARTMENT OF TAXATION, Tax Including State Homestead, State Tax on Non-Homestead, SPECIAL TAXES, TOTAL TAXES, PAID, WHEN PAID, Number of Receipt, March Settlement 1962, June Settlement 1962, November Settlement 1962, Collections to First Monday in January 1963, Delinquent on First Monday in January 1963, Total Delinquent Tax and Penalty, REMARKS.

Plat of Lakeside Park

Handwritten names: Valdie J. & Josephine M. Erickson, Erik N. & Gunhild L. Andersson, Benjamin Magnusson, Ron & Ruth E. Blam, Roy A. & Mildred R. Alborn

Summary calculations: 844, 4356 = 4356, 22720, 1200, 10472, 22720, 33192, 970, 33962, 20571, 8185, 5206

Assessment Roll and Tax List of Real Property in the Town of Lake of the Isles

* Indicate Type of Property: R-Residential, C-Commercial, I-Industrial, U-Utility, F-Farm, L-Lakeshore, T-Timber, M-Mineral

Form 50 MILLER-DAVIS CO., MINNEAPOLIS

Flat of Lakeside Park

Table with columns: IN WHOSE NAME ASSESSED, SUBDIVISION (Lakeside Park), DESCRIPTION OF PROPERTY, TRUE AND FULL VALUATIONS, ASSESSED VALUATIONS (RURAL, ALL OTHER, MACHINERY, Seasonal and Recreational Cabins, TOTAL ASSESSED VALUE), and FINAL EQUALIZED VALUE.

Aug. G. Erickson
August G. Erickson
Loren E. + Carl A. Daves

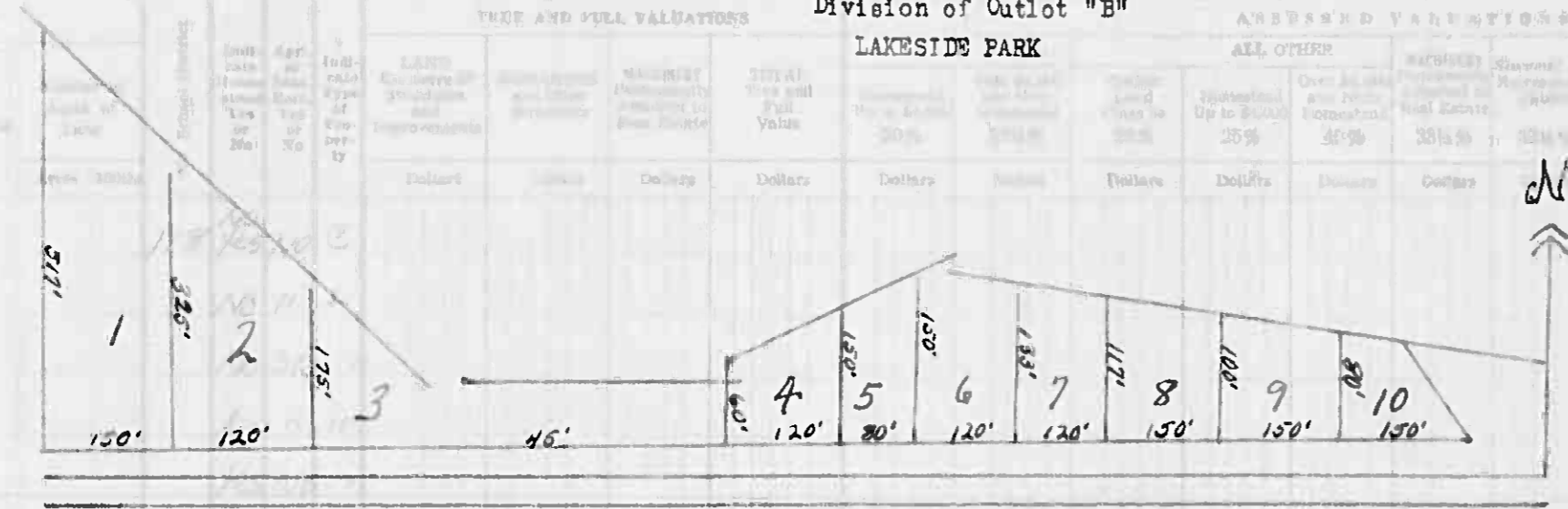
Cass County, Minnesota, for Taxes for the Year 1961.

Table with columns: VALUATIONS BY SCHOOL DISTRICTS AS EQUALIZED BY DEPARTMENT OF TAXATION, SOLD FOR TAXES, SPECIAL TAXES, TOTAL TAXES, PAID, WHEN PAID, Number of Receipt, March Settlement 1962, June Settlement 1962, November Settlement 1962, Collections to First Monday in January 1963, Delinquent on First Monday in January 1963, Total Delinquent Tax and Penalty, REMARKS.

Handwritten summary calculations at the bottom of the tax table, including totals for assessed values and taxes.

Assessment Roll and Tax List of Real Property in the State of Minnesota
 SLATER TOWNSHIP
 Division of Outlot "B"
 LAKESIDE PARK

IN WHOSE NAME ASSESSED	SUBDIVISION	Sec. of Lot	Town or Block	DESCRIPTION OF PROPERTY	TREE AND FULL VALUATIONS										TOTAL ASSESSED VALUE	Total Assessed Value as Equated by the Board of Review	FINAL QUALIFIED VALUE
					1	2	3	4	5	6	7	8	9	10			
Robert H. + Myrtle S. Budge	OUTLOT	A															
Henry P. Boos	TRACT #1 OF OUTLOT	B															
Benjamin Magnuson	" 2 "	"	B														
A. E. + Lelah Peterson	" 3 "	"	B														
Robert A. + Myrtle Kasper	" 4 "	"	B														
H. A. W. Kasper	" 5 "	"	B														
" "	" 6 "	"	B														
P. M. Kjaeglien	" 7 "	"	B														
Carl F. + Elsa G. Speck	" 8 "	"	B														
Rose Nicklason	" 9 "	"	B														
A. G. Erickson	" 10 "	"	B														



Lots 1: Henry Boos
 2: Benjamin Magnuson
 3: A. E. & Lelah Peterson
 4: Robert A. & Myrtle Kasper
 5: H. A. W. Kasper

Lots 6: H. A. W. Kasper
 7: P. M. Kjaeglien
 8: Carl & Elsa Speck
 9: Rose Nicklason
 10: A. G. Erickson

SOLD FOR TAXES	VALUATIONS BY SCHOOL DISTRICTS AS EQUALIZED BY DEPARTMENT OF TAXATION					Tax Including State Homestead	State Tax on Non-Homestead	SPECIAL TAXES	SPECIAL TAXES	TOTAL TAXES	PAID	WHEN PAID	Number of Receipt	March Settlement 1962	June Settlement 1962	November Settlement 1962	Collections to First Monday in January 1963	Delinquent on First Monday in January 1963	Total Delinquent Tax and Penalty	REMARKS
	District No.	District No.	District No.	District No.	District No.															
1																				
2																				
3																				
4																				
5																				
6																				
7																				
8																				
9																				
10																				
11																				
12																				
13																				
14																				
15																				
16																				
17																				
18																				
19																				
20																				

157
 262 = 262
 261 = 261
 529 = 682

15388
 4280
 19668

382
 20050

194 213

194

