

ASSESSMENT & TAX LIST - 1957

Slater







Assessment of

COLLECTIONS OF TAXES OF 1958

Town of Slater

CASS COUNTY, MINNESOTA

NAME OF OWNER	FUNDS	MARCH SETTLEMENT	JUNE SETTLEMENT	NOV. SETTLEMENT	Amount Collected from Nov. 15 to First Monday in Jan. 1958	REDUCTIONS	Total Reductions and Collected	BALANCE UNCOLLECTED	ADDITIONS	Total Uncollected to First Monday in January, 1958
		1958	1958	1958						
	State-Non-Homestead	1635	2785	670	56					
	State-Homestead	1452	4379	1554	224					
	County Revenue	7383	22280	7907	1141					
	County Road and Bridge	3622	10930	3879	560					
	County Welfare	11384	34356	12192	1759					
	County Bond and Interest	1045	3155	1120	162					
	Welfare Deficit	678	2048	727	104					
	R+B. Def. prog.	1207	3643	1293	187					
	PERA	707	2135	757	109					
	Town Revenue	1613	4868	1727	279					
	Town Road and Bridge	3260	9838	3491	504					
	Town Drag	241	729	259	58					
	Town State Loan									
	Co. Nurse	483	1458	517	74					
	B.+D.	5312	16030	5689	820					
	Fire	1613	4867	1727	249					
	R.+B. Bldg.	483	1458	517	74					
	Cass Co. Agv.	122	364	129	19					
	School Local 1 Mill	243	729	258	37					
	School Special	8880	28043	7821	1242					
	School State Loan	1970	5939	2107	304					
	Deficiency	3922	11833	4200	605					
	Tuition									
	Transportation	250	742	263	38					
	C. O.	5247	15834	5619	812					
	B.+D.	4219	12731	4517	652					
	PERA	655	2011	715	103					
		67626	203185	69655	10122					

	School District No.	LOCAL 1 MILL	SPECIAL	STATE LOAN	Deficiency	Transp.	C. O.	B.+D.	PERA	TOTALS
MARCH SETTLEMENT	School District No. 118A 118710	128 115	3193 5687	1042 928	2074 1848	131 119	2776 2471	2232 1987	352 303	11928 13458
	Totals	243	8880	1970	3922	250	5247	4219	655	25386
	School District No. 118A 118710	336 393	8390 19653	2735 3204	5450 6383	342 400	7292 8542	5863 6868	926 1085	31334 46528
JUNE SETTLEMENT	Totals	729	28043	5939	11833	742	15834	12731	2011	77862
	School District No. 118A 118710	204 54	5108 2713	1665 442	3318 882	208 55	4440 1179	3569 948	565 150	19077 6423
	Totals	258	7821	2107	4200	263	5619	4517	715	25500
NOVEMBER SETTLEMENT	School District No. 118A 118710	25 12	622 620	203 101	404 201	25 13	542 270	435 217	69 34	2325 1468
	Totals	37	1242	304	605	38	812	652	103	3793
	School District No. 118A 118710									
NOVEMBER to JANUARY	Totals	37	1242	304	605	38	812	652	103	3793
	School District No. 118A 118710									
	Totals									
ADDITIONS	School District No. 118A 118710									
	Totals									
	School District No. 118A 118710									
REDUCTIONS	Totals									
	School District No. 118A 118710									
	Totals									

Real Estate

Personal

































































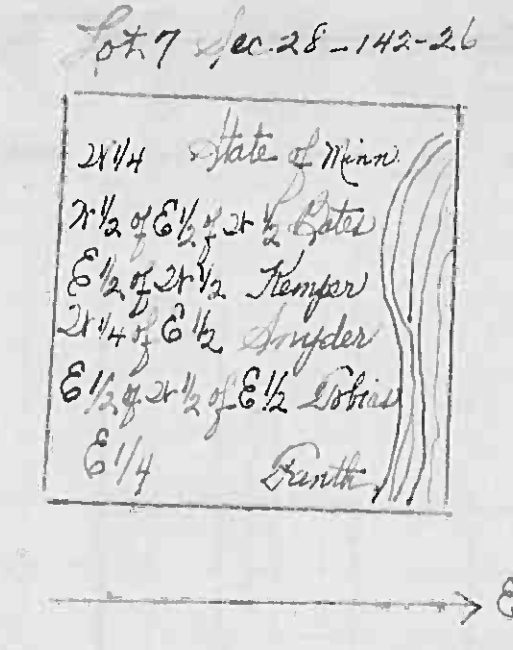
Assessment Roll and Tax List of Real Property in the *Town* of *State*

Cass County, Minnesota, for Taxes for the Year 1957.

Form SCD (56) UNIFORM REPORT, COMPASS

\* Indicate Type of Property: R-Residential, C-Commercial, I-Industrial, U-Utility, F-Farm, L-Lakeshore, T-Timber, M-Mineral

IN WHOSE NAME ASSESSED	TO WHOM TRANSFERRED	DESCRIPTION OF PROPERTY					TRUE AND FULL VALUATION			VALUATIONS				SOLD FOR TAXES	VALUATIONS BY SCHOOL DISTRICTS AS EQUALIZED BY DEPARTMENT OF TAXATION						SPECIAL TAXES	TOTAL TAXES	PAID	WHEN PAID	Number of Receipt	March Settlement 1958	June Settlement 1958	Penalty 1958	November Settlement 1958	Penalty 1958	Collections to First Monday in January 1959	Penalty 1959	Delinquent on First Monday in January 1959	Total Delinquent Tax and Penalty	REMARKS
		SUBDIVISION	Sec or Lot	Town or Block	Reg.	Number of Acres of Land	LAND Exclusive of Structures and Improvements	BUILDINGS and Other Structures	MACHINERY Permanently Attached to Real Estate	Over \$4,000 and Non-Homestead 40%	MACHINERY Permanently Attached to Real Estate 33 1/3 %	TOTAL ASSESSED VALUE	Total Assessed Value as Equalized by the Board of Review		FINAL EQUALIZED VALUE	District No.	Rate	District No.	Rate	District No.															
U. S. of America		NW 1/4 of NE 1/4	18	14 x 16	61																														
U. S. of America		NW 1/4 of NE 1/4																																	
U. S. of America		SW 1/4 of NE 1/4																																	
U. S. of America		SE 1/4 of NE 1/4																																	
U. S. of America		NE 1/4 of NW 1/4																																	
U. S. of America		NW 1/4 of NW 1/4																																	
Harold C. & Emma C. Grammer		SW 1/4 of NW 1/4		Lot 4	37																														
U. S. of America		SE 1/4 of NW 1/4		Lot 3																															
State of Minnesota (cont. to Donald L. Bone)		NE 1/4 of SW 1/4																																	
Cass County		SW 1/4 of SW 1/4		Lot 6																															
Harold J. Hantl		SE 1/4 of SW 1/4		2 1/4 of 7																															
Ellsworth H. Bates		2 1/2 of 6 1/2 of 2 1/2 of Lot 7			885																														
Nicie L. Kemper		NE 1/4 of SE 1/4		6 1/4 of 5 1/2 of Lot 7	295																														
Ernest & Mildred Snyder		NW 1/4 of NE 1/4		2 1/4 of 6 1/2 of Lot 7	295																														
Dewey & Stella Tobias		SW 1/4 of SE 1/4		6 1/2 of 2 1/2 of 6 1/2 of Lot 7	885																														
Harold & Leah H. Bant		SE 1/4 of SE 1/4		6 1/4 of Lot 7	591																														



(Continued on next page) 66 51

3244  
3554  
4788

116 998

5895







Assessment Roll and Tax List of Real Property in the County of Water

Cass County, Minnesota, for Taxes for the Year 1957.

Form 500 (56) JULY 1956 REVISED

Indicate Type of Property: R-Residential, C-Commercial, I-Industrial, U-Utility, F-Farm, L-Lakeshore, T-Timber, M-Mineral

Table with columns: IN WHOSE NAME ASSESSED, TO WHOM TRANSFERRED, DESCRIPTION OF PROPERTY, TRUE AND FULL VALUATIONS, ASSESSED VALUATIONS, VALUATIONS BY SCHOOL DISTRICTS AS EQUALIZED BY DEPARTMENT OF TAXATION, SOLD FOR TAXES, PAID, WHEN PAID, Number of Receipt, March Settlement 1958, June Settlement 1958, November Settlement 1958, Collections to First Monday in January 1959, Delinquent on First Monday in January 1959, Total Delinquent Tax and Penalty, REMARKS.

Indicate Type of Property: R-Residential, C-Commercial, I-Industrial, U-Urility, F-Farm, L-Lakeshore, T-Timber, M-Mineral

Form 500 (56) 1-1-56

IN WHOSE NAME ASSESSED	TO WHOM TRANSFERRED	DESCRIPTION OF PROPERTY					TRUE AND FULL VALUATIONS			ASSESSED VALUATIONS						FINAL EQUALIZED VALUE	SOLD FOR TAXES	VALUATIONS BY SCHOOL DISTRICTS AS EQUALIZED BY DEPARTMENT OF TAXATION							PAID	WHEN PAID	Number of Receipt	March Settlement 1956	June Settlement 1956	Penalty 1956	November Settlement 1956	Penalty 1956	Collections to First Monday in January 1959	Penalty 1959	Delinquent on First Monday in January 1959	Total Delinquent Tax and Penalty	REMARKS			
		SUBDIVISION	Sec. or Lot	Town or Block	Rng.	Number of Acres of Land	LAND EXCLUSIVE OF STRUCTURES AND IMPROVEMENTS	BUILDINGS AND OTHER STRUCTURES	MACHINERY PERMANENTLY ATTACHED TO REAL ESTATE	TOTAL True and Full Value	RURAL		ALL OTHER					TOTAL ASSESSED VALUE	Total Assessed Value as Equalized by the Board of Review	District No.	Rate	District No.	Rate	District No.														Rate	District No.	Rate
											Homestead Up to \$1,000 20%	Over \$1,000 and Non-Homestead 33 1/3 %	Timber Land Class 3c 20%	Homestead Up to \$4,000 25%	Over \$4,000 and Non-Homestead 40%																									
U. S. of America		1	NE 1/4 of NE 1/4		30 1/2 x 26																																			
U. S. of America		2	NW 1/4 of NE 1/4																																					
State of Minnesota		3	SW 1/4 of NE 1/4																																					
State of Minnesota		4	SE 1/4 of NE 1/4																																					
		5																																						
U. S. of America		6	NE 1/4 of NW 1/4																																					
U. S. of America		7	NW 1/4 of NW 1/4																																					
State of Minnesota		8	SW 1/4 of NW 1/4																																					
State of Minnesota		9	SE 1/4 of NW 1/4																																					
		10																																						
State of Minnesota		11	NE 1/4 of SW 1/4																																					
State of Minnesota		12	NW 1/4 of SW 1/4																																					
U. S. of America		13	SW 1/4 of SW 1/4																																					
State of Minnesota		14	SE 1/4 of SW 1/4																																					
		15																																						
State of Minnesota		16	NE 1/4 of SE 1/4																																					
State of Minnesota		17	NW 1/4 of SE 1/4																																					
State of Minnesota		18	SW 1/4 of SE 1/4																																					
State of Minnesota		19	SE 1/4 of SE 1/4																																					
		20																																						

Real Estate

Personal

Personal





Assessment Roll and Tax List of Real Property in the Lower of State

\* Indicate Type of Property: R-Residential, C-Commercial, I-Industrial, U-Utility, F-Farm, L-Lakefront, T-Timber, M-Mineral

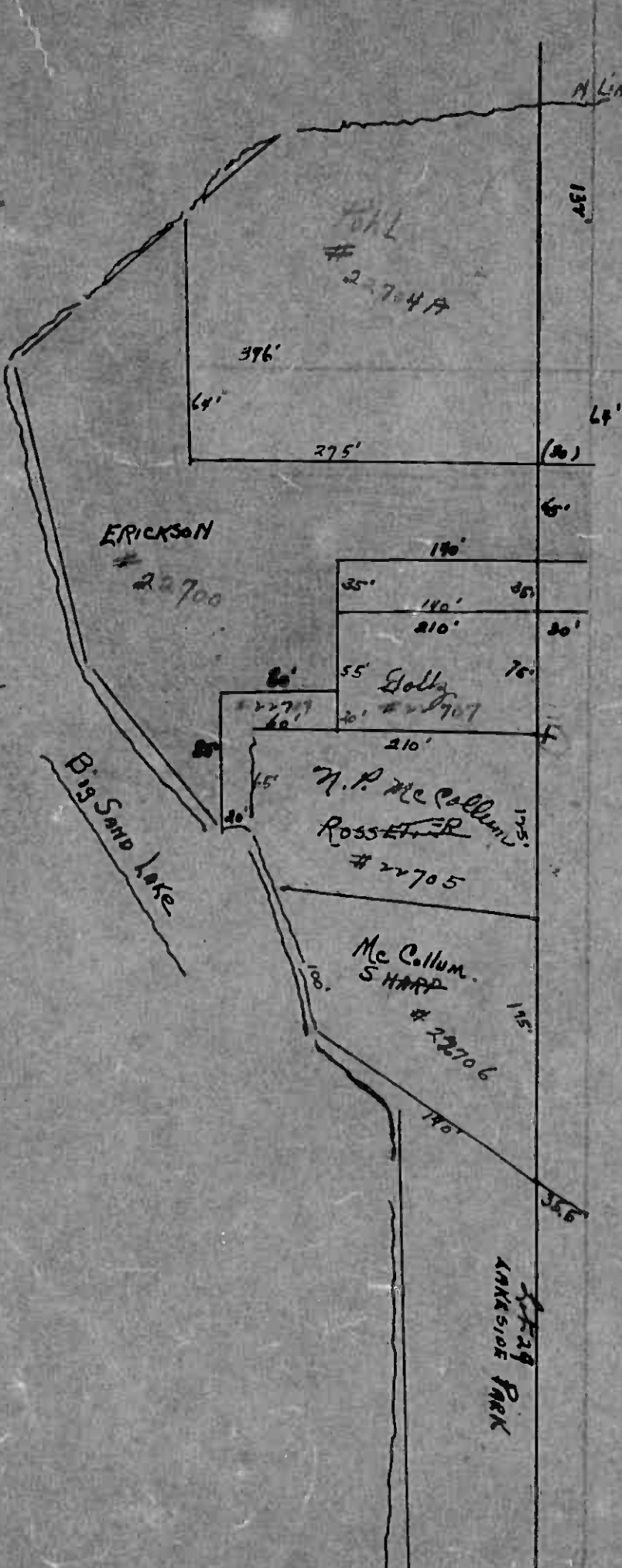
Table with columns: IN WHOSE NAME ASSESSED, TO WHOM TRANSFERRED, DESCRIPTION OF PROPERTY, TRUE AND FULL VALUATIONS, ASSESSED VALUATIONS, and FINAL EQUALIZED VALUE. Includes handwritten entries for various property owners and their details.

Cass County, Minnesota, for Taxes for the Year 1957.

Table with columns: SOLD FOR TAXES, VALUATIONS BY SCHOOL DISTRICTS AS EQUALIZED BY DEPARTMENT OF TAXATION, SPECIAL TAXES, TOTAL TAXES, PAID, WHEN PAID, Number of Receipt, March Settlement 1958, June Settlement 1958, Penalty, November Settlement 1958, Penalty, Collections to First Monday in January 1959, Penalty, Delinquent on First Monday in January 1959, Total Delinquent Tax and Penalty, REMARKS. Includes handwritten entries for tax payments and delinquencies.

Lot 5-34-142-26

Lot 4-142-57



Lot 4

E1 W LINE

ERICKSON

# 22700

55' Golly #22707

M.P. McCollum  
Rosseter  
# 22705

Mc Collum  
SHARP  
# 22706

Big Sand Lake

Lakeside Park

#22704

A LINE

137'

64'

(20)

65'

190'

35'

140'

35'

210'

30'

70'

210'

F

135'

100'

175'

170'

35.6'



Assessment Roll and Tax List of Real Property in the

Town of Slater, Minnesota. Indicate Type of Property: R-Residential, C-Commercial, I-Industrial, U-Utility, F-Farm, L-Lakeshore, T-Timber, M-Mineral

Cass County, Minnesota, for Taxes for the Year 1957.

Table with columns: IN WHOSE NAME ASSESSED, TO WHOM TRANSFERRED, DESCRIPTION OF PROPERTY, TRUCK AND FULL VALUATIONS, ASSESSED VALUATIONS, VALUATIONS BY SCHOOL DISTRICTS AS EQUALIZED BY DEPARTMENT OF TAXATION, TAXES, PAID, WHEN PAID, Number of Receipt, March Settlement 1958, June Settlement 1958, November Settlement 1958, Collections to First Monday in January 1959, Delinquent on First Monday in January 1959, Total Delinquent Tax and Penalty, REMARKS.





Assessment Roll and Tax List of Real Property in the

*Town of Saxon* of *State of Minnesota*

\* Indicate Type of Property: R-Residential, C-Commercial, I-Industrial, U-Utility, F-Farm, L-Lakeshore, T-Timber, M-Mineral

Cass County, Minnesota, for Taxes for the Year 1957.

Form 30 (5-57) UNIFORM COUNTY, MINNESOTA

Lakeside Park

IN WHOSE NAME ASSESSED  
TO WHOM TRANSFERRED  
SUBDIVISION  
Lakeside Park

Table with columns: Sec. of Lot, Town or Block, No. of Acres of Land, No. School District, Indicate Home Tax, Indicate Apts. Tax, Indicate Type of Property, TRUE AND FULL VALUATIONS (LAND, BUILDINGS, MACHINERY, TOTAL), ASSESSED VALUATIONS (RURAL, ALL OTHER, MACHINERY, TOTAL ASSESSED), FINAL EQUALIZED VALUE.

Table with columns: VALUATIONS BY SCHOOL DISTRICTS AS EQUALIZED BY DEPARTMENT OF TAXATION (District No., Rate, Mills), Tax including State Homestead, State Tax on Non-Homestead, SPECIAL TAXES, TOTAL TAXES, PAID, WHEN PAID, Number of Receipt, March Settlement 1958, June Settlement 1958, November Settlement 1958, Collections to First Monday in January 1959, Delinquent on First Monday in January 1959, Total Delinquent Tax and Penalty, REMARKS.

Robert A. & Myrtle A. Kasper  
" " "  
" " "  
" " "  
H. A. Kasper  
" " "  
" " "  
" " "  
" " "  
" " "  
" " "  
" " "  
Philip M. & Annette Spagnoli  
Philip M. Spagnoli  
" " "  
Carl F. & Elsa A. Speck  
" " "  
" " "  
Rose Nicklason  
" " "  
" " "  
" " "

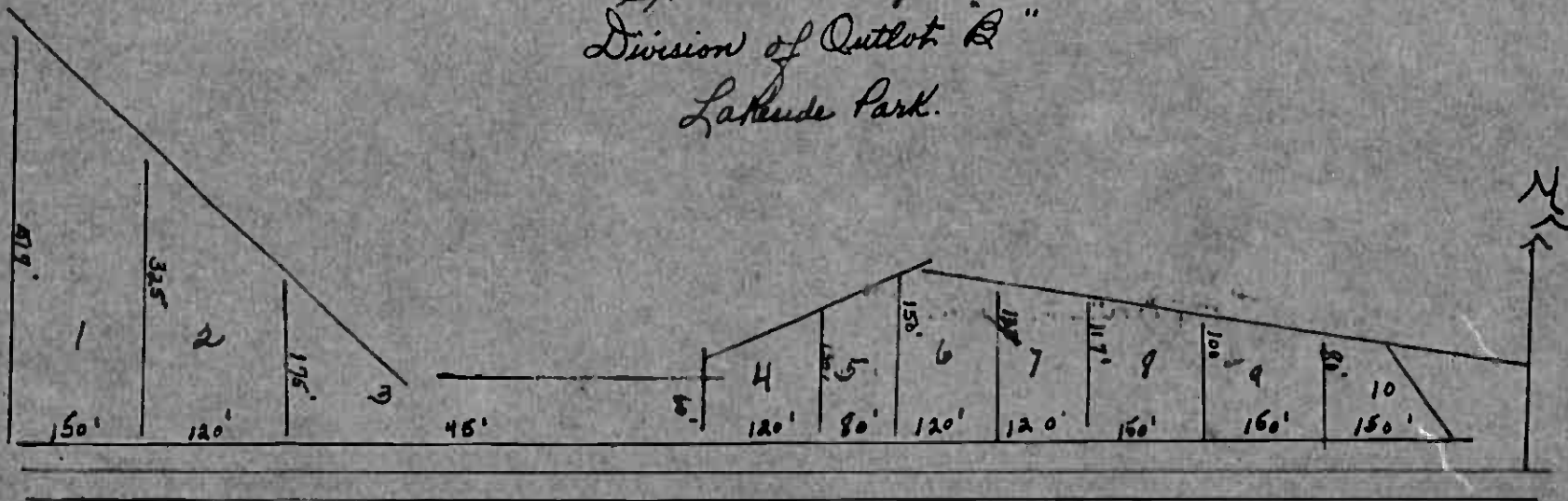
1 2  
2  
3  
4  
5  
6  
7  
8  
9  
10  
11  
12  
13  
14  
15  
16  
17  
18  
19  
20  
21  
22  
23  
24  
25  
26  
27  
28  
29  
30  
31  
32  
33  
34  
35  
36  
37  
38  
39  
40  
41  
42  
43  
44  
45  
46  
47  
48  
49  
50  
51  
52  
53  
54  
55  
56  
57  
58  
59  
60  
61  
62  
63  
64  
65  
66  
67  
68  
69  
70  
71  
72  
73  
74  
75  
76  
77  
78  
79  
80  
81  
82  
83  
84  
85  
86  
87  
88  
89  
90  
91  
92  
93  
94  
95  
96  
97  
98  
99  
100







Slater Township  
 Division of Outlot "B"  
 Lakeude Park.



- Lots 1: Harry Boos  
 2: Benjamin Magnuson  
 3: A.C. & Selah Peterson  
 4: Robert A. & Myrtle Kasper  
 5: H.A.W. Kasper

- Lots 6: H.A.W. Kasper  
 7: P.M. Haglin  
 8: Carl & Ella Speck  
 9: Rosa Nuckleson  
 10: A.S. Erickson

Assessment Roll and Tax List of Real Property in the Town of Water,

Cass County, Minnesota, for Taxes for the Year 1957.

Form 5C (57) UNIFORM-STATE ADAPTATION, MINNESOTA

Indicate Type of Property: R-Residential, C-Commercial, I-Industrial, U-Utility, F-Farm, L-Lakeshore, T-Timber, M-Mineral

IN WHOSE NAME ASSESSED	TO WHOM TRANSFERRED	DESCRIPTION OF PROPERTY																				
		SUBDIVISION	Sec. or Lot	Town or Block	Reg.	Number of Acres of Land	No. School District	Indicate Homestead Yes or No	Indicate Agricultural Yes or No	Indicate Type of Property	TRUE AND FULL VALUATIONS			ASSESSED VALUATIONS					Total Assessed Value as Equalized by the Board of Review	FINAL EQUALIZED VALUE		
											LAND Exclusive of Structures and Improvements	BUILDINGS and Other Structures	MACHINERY Permanently Attached to Real Estate	TOTAL True and Full Value	RURAL		ALL OTHER				MACHINERY Permanently Attached to Real Estate	TOTAL ASSESSED VALUE
															Homestead Up to \$1,000 20%	Over \$4,000 and Non-Homestead 33 1/3%	Timber Land Class 3c 20%	Homestead Up to \$1,000 25%				
		Dollars	Dollars	Dollars	Dollars	Dollars	Dollars	Dollars	Dollars	Dollars	Dollars	Dollars	Dollars	Dollars	Dollars	Dollars						

*Land total acres 379060*

SOLD FOR TAXES	VALUATIONS BY SCHOOL DISTRICTS AS EQUALIZED BY DEPARTMENT OF TAXATION						Tax Including State Homestead	State Tax on Non-Homestead	SPECIAL TAXES	TOTAL TAXES	PAID	WHEN PAID	Number of Receipts	March Settlement 1957	June Settlement 1958	Penalty 1957	November Settlement 1958	Penalty 1958	Collections to First Monday in January 1959	Penalty 1959	Delinquent on First Monday in January 1959	Total Delinquent Tax and Penalty	REMARKS
	District No. ....	District No. ....	District No. ....	District No. ....	District No. ....	District No. ....																	
	Rate..... Mills	Rate..... Mills	Rate..... Mills	Rate..... Mills	Rate..... Mills	Rate..... Mills																	
	Dollars	Dollars	Dollars	Dollars	Dollars	Dollars	\$ cts.	\$ cts.	\$ cts.	\$ cts.	Month Day Year		\$ cts.	\$ cts.	\$ cts.	\$ cts.	\$ cts.	\$ cts.	\$ cts.	\$ cts.	\$ cts.	\$ cts.	

*Grand Totals*

\$ 3761	\$ 2295 = 6056	1769.64
3005	3794 = 6799	1601.64 72118
6766	5589 = 12355	3371.28
		4190
		3413.18