

Assessment & Tax List - 1954

Slater



SUMMARY OF TAX COLLECTION

Original Levy	- - - - -	\$ 3765.32	
Additions	= = = = =	\$	
			\$ 3765.32
Abatement	- - - - -	\$ 35.04	
			\$ 3730.28
COLLECTIONS			
March Settlement	= = = = =	\$ 530.08	
June Settlement	= = = = =	\$ 1820.08	
November Settlement	= = = = =	\$ 958.85	
January Settlement	= = = = =	\$ 48.92	\$ 3357.93
			\$
Over Collected	- - - - -	\$ 9.22	
Under Collected	- - - - -	\$	
Delinquent	- - - - -	\$ 351.57	\$ 372.35
Total	= = = = =		\$ 3730.28

TABULAR SCHEDULE OF VALUATIONS,

LEVIED IN THE Youn OF Slater

School District No.	VALUATION BY SCHOOL DISTRICTS				RATE OF STATE TAXES		RATE OF COUNTY TAXES					RATE OF TOWN TAXES										RATE OF													
	Agric- cultural Lands	Non-Agric- cultural Lands	Personal Property	Total Value of all Property except Money and Credits	Total Rate of State Tax	Total Rate of County Tax	Rev.	R. & B.	Welfare	Bonds and Int.	R. & B.	Total Rate of County Tax	Rev.	R. & B.	Drag Tax	State Loan	Total Rate of Town Tax	Local	Special	State Loan	Deficiency	Tuition	Transportation	C.O. Bd.	Local	Special	State Loan	Deficiency	Tuition	Transportation	C.O. Bd.				
C 1	8463	3666	16247 7523	14,505	3.93	28.11	14.91	50.19	11.47	2.16	106.68	6.9	13.8	1.	6.9	24.3	52.9	1.	25.	9.	28.5	1.5	5.5	14.8	1.	50.	9.	28.5	1.5	5.5	14.8				
				N.H.S. 22 9.15																															
Assessed Value	Rural	All Other	Personal Property	Total																															
Homestead	5716			5716																															
Non-Homestead	6413		2376	8789																															
Total	12129		2376	14,505																															

RATES AND TAXES

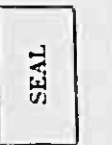
COUNTY OF CASS, STATE OF MINNESOTA

School District	LOCAL 1 MILL AND SPECIAL SCHOOL TAXES BY DISTRICTS															ALL OTHER TAXES		
	Total Rate of Sch'l Tax	Total Rate of all Taxes	Local 1 Mill	Special	State Loan	Def.	Transp.	C.O.	B.d.	Total School Taxes	FUNDS	Rate	Amounts					
C 1	55.3	248.81	1007	25217	9078	25748	1513	5548	14929	86042	State - Non-Homestead		4578					
	110.3	273.81	442	22090	3976	12591	663	2430	6539	48731	State - Homestead		5700					
			1451	47307	13054	41339	2176	7978	21468	134773	County Revenue,		40779					
											County Road and Bridge,		21629					
											County Welfare,		72805					
											Bonds and Interest		16037					
											<i>R. &amp; B. Sinking</i>		2401					
													154751					
											Town Revenue,		10008					
											Town Road and Bridge,		20017					
											Town Drag,		1450					
											Town State Loan,		10008					
											<i>High B. &amp; S.</i>		35247					
													76730					
											School Local 1 Mill,		1451					
											School Special,		41307					
											School State Loan,		13054					
											Deficiency		41339					
											Tuition		2176					
											Transportation		7978					
											<i>C.O.</i>		21468					
											<i>B. &amp; S.</i>		134773					
													376532					

273.81  
55.22  
279.03

Total Taxes Real Estate 3142.90  
Pers. Prop. 622.42  
Total 3765.32

Total Number of Acres 3726.20  
State of Minnesota, ss. *L.C. Peterson*  
COUNTY OF CASS  
Auditor of said County and State aforesaid, do hereby certify that the foregoing is a true and correct Schedule, showing the valuation of all the taxable property, in the State of Minnesota, in said County, the several rates of Taxation and Totals of the several Tax Funds levied thereon for the year A. D. 1954.  
Witness my hand and official seal, this 3rd day of January A. D. 1955.  
*R.C. Peterson* County Auditor.  
By *Walter Gilliam* Deputy



































































Assessment Roll and Tax List of Real Property in the Town of *Sharon* of *Illino.*

\*Indicate Type of Property: R-Residential, C-Commercial, I-Industrial, U-Utility, F-Farm

IN WHOSE NAME ASSESSED	TO WHOM TRANSFERRED	No. School District	Indicate Homestead or No	Indicate Agricultural Yes or No	Indicate Type of Property	TRUE AND FULL VALUATIONS							Total Assessed Value as Equalized by the Board of Review	FINAL EQUALIZED VALUE	VALUATIONS BY SCHOOL DISTRICTS AS EQUALIZED BY DEPARTMENT OF TAXATION						SPECIAL TAXES	TOTAL TAXES	PAID	WHEN PAID	Number of Receipt	March Settlement 1955	June Settlement 1955	Penalty	November Settlement 1955	Penalty	Collections to First Monday in January 1956	Penalty	Delinquent on First Monday in January 1956	Total Delinquent Tax and Penalty	REMARKS										
						LAND Exclusive of Structures and Improvements	BUILDINGS and Other Structures	MACHINERY Permanently Attached to Real Estate	TOTAL True and Full Value	RURAL		ALL OTHER			MACHINERY Permanently Attached to Real Estate	TOTAL ASSESSED VALUE	District No.	District Rate	District No.	District Rate																District No.	District Rate								
										Homestead Up to \$1,000 20%	Over \$1,000 and Non-Homestead 33 1/3%	Homestead Up to \$1,000 25%																										Over \$1,000 and Non-Homestead 40%	No.	No.	No.	No.			
U. S. of America		1																																											
U. S. of America		2																																											
U. S. of America		3																																											
U. S. of America		4																																											
U. S. of America		5																																											
U. S. of America		6																																											
U. S. of America		7																																											
Harold & Emma C. Grammer		8					37		M/T	345		345		115		115																			2922										
U. S. of America		9																																											
State of Minnesota (cont. to Donald L. Lane)		12					2950		No	291		291		97		97																													
Cass County		13																																											
State of Minnesota		14																																											
Ellsworth H. Bitter		15							M	T	36		36		12		12																												
Wells L. Kemper		16					295		M	T	36		36		12		12																			304	334								
Ernest H. Mulder & Snyder		17					295		M	T	36		36		12		12																												
Dewey & Stella Dohal		18					885		M	T	12		12		4		4																												
Harold I. & Leah H. Parth		19					541		"	T	57		57		19		19																												
		20																																											
<i>(continued on next page)</i>												1661																																	

Lot 7 Sec 28-142-26

2 1/4 State Mn.

2 1/2 of 2 1/2 of 2 1/2 of Lot 7

2 1/4 of 2 1/2 of Lot 7

2 1/4 of 2 1/2 of Lot 7

2 1/4 of Lot 7

1 1/2

and assess 2922 omitted Prop.

Balance Paid  
AUG 8 1955  
JUL 15 1955

PAID IN FULL MAY 31 1955

PAID IN FULL FEB 28 1955  
PAID IN FULL JAN 7 1954  
PAID IN FULL MAY 1 1955

304 334

406 286 2464

3226







Assessment Roll and Tax List of Real Property in the Lower of State,  
\*Indicate Type of Property: R-Residential, C-Commercial, I-Industrial, U-Utility, F-Farm

Cass County, Minnesota, for Taxes for the Year 1954.

Table with columns for Property Description, Valuations (True and Full, Assessed), Taxes (School Districts, State, Special, Total), and Payment/Remarks. Includes handwritten entries for lots 1-4 and 6.









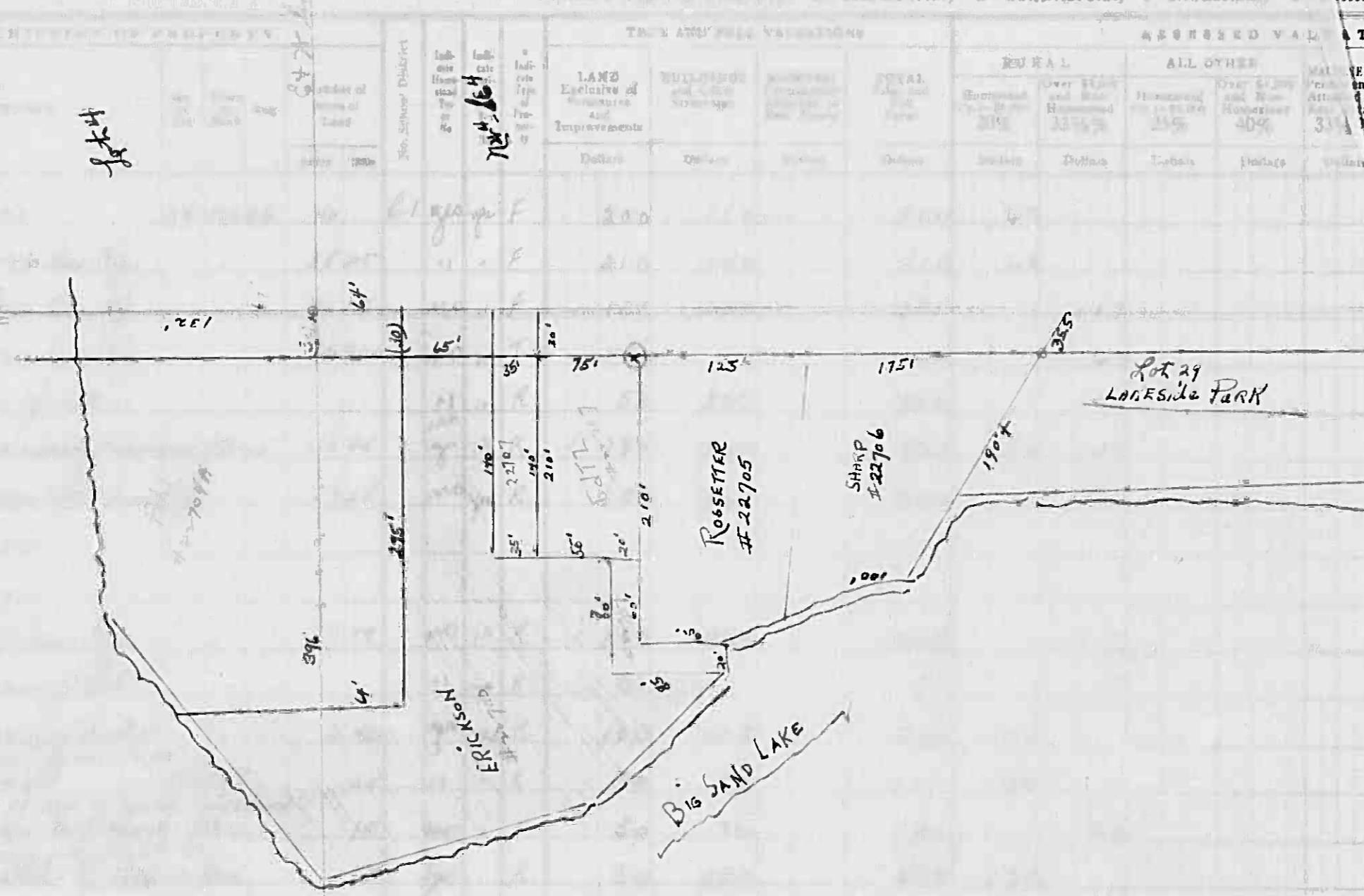
Assessment Roll and Tax List of Real Property in the

Cass County, Minnesota, for Taxes for the Year 1954.

Indicate Type of Property: R-Residential, C-Commercial, I-Industrial, U-Utility, F-Farm

IN WHOSE NAME ASSESSED	TO WHOM TRANSFERRED	LAND EXCLUSIVE OF IMPROVEMENTS	LAND IMPROVEMENTS	TOTAL ASSESSED VALUE	Total Assessed Value as Equalized by the Board of Review	FINAL EQUALIZED VALUE	SOLD FOR TAXES	VALUATIONS BY SCHOOL DISTRICTS AS EQUALIZED BY DEPARTMENT OF TAXATION						Tax including State Homestead	State Tax on Non-Homestead	SPECIAL TAXES	TOTAL TAXES	PAID	WHEN PAID	Number of Receipts	March Settlement 1955	June Settlement 1955	Penalty	November Settlement 1955	Penalty	Collection to First Monday in January 1956	Penalty	Delinquent on First Monday in January 1956	Total Delinquent Tax and Penalty	REMARKS						
								District No. Rate Mills	District No. Rate Mills	District No. Rate Mills	District No. Rate Mills	District No. Rate Mills	District No. Rate Mills																							
Geo. Gacstrom				62																																
Andrew & Ruth Olsen				62																																
Lester & Agnes F. Pohl				117																																
John & Janet				60																																
Edward & Lillian E. Ralph				100																																
David & Amanda Bushaw				216																																
Adolph & Dorothy				100																																
Harold & Leah E. Farth				415																																
Robert & Hilda M. Pohl & Meta				17																																
Norman & Mildred A. Erickson				100																																
Augusta M. Goltz				20																																
Wm & K. E. Rosetter				42																																
James E & Abigail E. Sharpe				120																																
Ernest & Gertrude M. Williams				72																																
" " " "				75																																
Dred & Beatrice Greens				52																																
" " " "				40																																
				1670																																

Lot 5 34-142-26



Lakeside Park



Assessment Roll and Tax List of Real Property in the *Dowry* of *Dakota*

\*Indicate Type of Property: R-Residential, C-Commercial, I-Industrial, U-Utility, F-Farm

Cass County, Minnesota, for Taxes for the Year 1954.

Table with columns for property description, valuations, taxes, and payments. Includes entries for Emma M. & Walter A. Frank, Thoeke Juvenon, John & Elmer M. Johnson, Eugene Siegel, and Rita Mary Stransky.





Assessment Roll and Tax List of Real Property in the County of Water

\*Indicate Type of Property: R-Residential, C-Commercial, I-Industrial, U-Utility, F-Farm

Table with columns: IN WHOSE NAME ASSESSED, TO WHOM TRANSFERRED, DESCRIPTION OF PROPERTY, TRUE AND FULL VALUATIONS, ASSESSED VALUATIONS, FINAL EQUALIZED VALUE.

Largest Part

Cass County, Minnesota, for Taxes for the Year 1954.

Table with columns: VALUATIONS BY SCHOOL DISTRICTS AS EQUALIZED BY DEPARTMENT OF TAXATION, SOLO FOR TAXES, SPECIAL TAXES, TOTAL TAXES, PAID, WHEN PAID, Number of Receipt, etc.



Assessment Roll and Tax List of Real Property in the Town of Lakeville of State of Minnesota

\*Indicate Type of Property: R-Residential, C-Commercial, I-Industrial, U-Utility, F-Farm

IN WHOSE NAME ASSESSED	TO WHOM TRANSFERRED	DESCRIPTION OF PROPERTY					TRUE AND FULL VALUATIONS											FINAL EQUALIZED VALUE
		SUBDIVISION	Sec. or Lot	Town or Block	Reg.	Number of Acres of Land	LAND Exclusive of Structures and Improvements	BUILDINGS and Other Structures	MACHINERY Permanently Attached to Real Estate	TOTAL True and Full Value	RURAL		ALL OTHER		MACHINERY Permanently Attached to Real Estate 33 1/8%	TOTAL ASSESSED VALUE	Total Assessed Value as Equalized by the Board of Review	
											Acres 100ths	Homestead Up to \$1,000 20%	Over \$1,000 and Non-Homestead 33 1/8%	Homestead Up to \$1,000 25%				
Aug. H. Erickson		Lakeville Park	21	22			60	390	450		150			150				
"			22				51		51		17			17				
August H. Erickson			23				51	75	126		42			42				
"			24				51		51		17			17				
"		Sec. of	25				24		24		8			8				
Frank & Paul W. Schweiger		Map of	25				25		25	5	5			5				
"			26				50	840	890	178				178				
"			27				50		50	10				10				
"			28				50		50	10				10				
"			29				50		50	10				10				

462 1305 1767 213 234 447

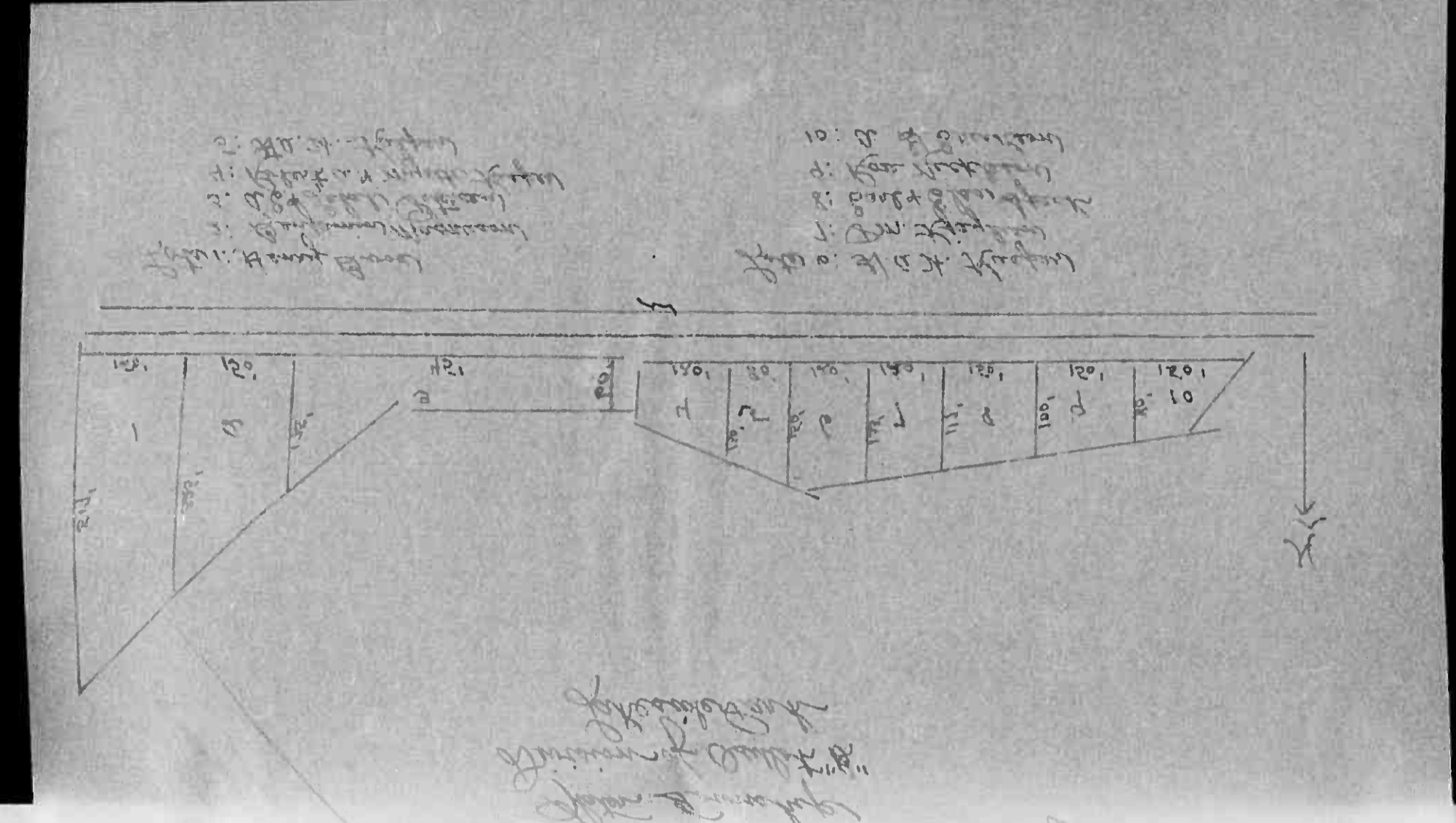
Cass County, Minnesota, for Taxes for the Year 1954.

SOLD FOR TAXES	VALIDATIONS BY SCHOOL DISTRICTS AS EQUALIZED BY DEPARTMENT OF TAXATION						Tax including State Homestead	State Tax on Non-Homestead	SPECIAL TAXES	TOTAL TAXES	PAID	WHEN PAID	Number of Receipt	March Settlement 1955	June Settlement 1955	Penalty	November Settlement 1955	Penalty	Collections to First Monday in January 1956	Penalty	Delinquent on First Monday in January 1956	Total Delinquent Tax and Penalty	REMARKS
	District No.	District No.	District No.	District No.	District No.	District No.																	
	Rate	Rate	Rate	Rate	Rate	Rate																	
	Mills	Mills	Mills	Mills	Mills	Mills																	
						150	78		4186	1	PAID IN FULL	FEB 28 1955											4186
						17	08		474	2	PAID IN FULL	FEB 28 1955											474
						42	22		1172	3	PAID IN FULL	FEB 28 1955	4246										1172
						17	08		474	4	PAID IN FULL	FEB 28 1955											474
						8	04		224	5	PAID IN FULL	FEB 28 1955											224
						45			136	6	PAID IN FULL	MAY 31 1955											
						178			4874	7	PAID IN FULL	MAY 31 1955											
						10			274	8	PAID IN FULL	MAY 31 1955	1219										5832
						10			274	9	PAID IN FULL	MAY 31 1955											
						10			274	10	PAID IN FULL	MAY 31 1955											

213 234 447 12242 120 12362 6530 5832







Assessment Roll and Tax List of Real Property in the Lakeside Park of Water

\*Indicate Type of Property: R-Residential, C-Commercial, I-Industrial, U-Utility, F-Farm

Form 50 (54)

IN WHOSE NAME ASSESSED	TO WHOM TRANSFERRED	DESCRIPTION OF PROPERTY			TRUE AND FULL VALUATIONS											FINAL EQUALIZED VALUE
		Subdivision	Sec. of Lot	Town or Block	Number of Acres or Land	LAND Exclusive of Structures and Improvements	BUILDINGS and Other Structures	MACHINERY Permanently Attached to Real Estate	TOTAL True and Full Value	RURAL		ALL OTHER		MACHINERY Permanently Attached to Real Estate	TOTAL ASSESSED VALUE	
				Acres 100ths	Dollars	Dollars	Dollars	Dollars	Dollars	Dollars	Dollars	Dollars	Dollars	Dollars	Dollars	Dollars
<i>Delbert H. &amp; Marine L. Bridges</i>		<i>Lakeside Park</i>				<i>100</i>	<i>1199</i>		<i>1299</i>	<i>180</i>	<i>133</i>			<i>313</i>		<i>1</i>
<i>Henry P. Boss</i>		<i>Tract 1 of Lakeside Park</i>				<i>15</i>			<i>15</i>		<i>5</i>			<i>5</i>		<i>2</i>
<i>Benjamin Magnusson</i>		<i>"</i>				<i>15</i>			<i>15</i>		<i>5</i>			<i>5</i>		<i>3</i>
<i>W.C. &amp; Selma Peterson</i>		<i>"</i>				<i>15</i>			<i>15</i>		<i>5</i>			<i>5</i>		<i>4</i>
<i>Robert W. Myrtle Kasper</i>		<i>"</i>				<i>12</i>			<i>12</i>		<i>4</i>			<i>4</i>		<i>5</i>
<i>H.A. Kasper</i>		<i>"</i>				<i>12</i>			<i>12</i>		<i>4</i>			<i>4</i>		<i>6</i>
<i>"</i>		<i>"</i>				<i>12</i>			<i>12</i>		<i>4</i>			<i>4</i>		<i>7</i>
<i>P.M. Kasper</i>		<i>"</i>				<i>12</i>			<i>12</i>		<i>4</i>			<i>4</i>		<i>8</i>
<i>Earl J. &amp; Elva A. Speck</i>		<i>"</i>				<i>10</i>	<i>2</i>		<i>10</i>	<i>2</i>			<i>2</i>		<i>9</i>	
<i>Rose Thelsson</i>		<i>"</i>				<i>12</i>			<i>12</i>		<i>4</i>			<i>4</i>		<i>10</i>
<i>A.S. Erickson</i>		<i>"</i>				<i>12</i>			<i>12</i>		<i>4</i>			<i>4</i>		<i>11</i>
																<i>12</i>
																<i>13</i>
																<i>14</i>
																<i>15</i>
																<i>16</i>
																<i>17</i>
																<i>18</i>
																<i>19</i>
																<i>20</i>

*Lakeside Park*  
*227 1199 1426 182 179 354*  
*23912 23616 47528 5716 6316 12032*

Cass County, Minnesota, for Taxes for the Year 1954.

SOLD FOR TAXES	VALIDATIONS BY SCHOOL DISTRICTS AS EQUALIZED BY DEPARTMENT OF TAXATION						Tax Including State Homestead	State Tax on Non-Homestead	SPECIAL TAXES	TOTAL TAXES	PAID	WHEN PAID	Number of Receipt	March Settlement 1955	June Settlement 1955	Penalty 1955	November Settlement 1955	Penalty 1955	Collections to First Monday in January 1956	Penalty	Delinquent on First Monday in January 1956	Total Delinquent Tax and Penalty	REMARKS
	District No.	District No.	District No.	District No.	District No.	District No.																	

*182 179 354 9692 98 9790 5265 4455 604 Abated*

