

ASSESSMENT & TAX LIST

Slater
1953

Assessment of T

COLLECTIONS OF TAXES OF 1953

Town

OF Slater

CASS COUNTY, MINNESOTA

NAME OF OWNER

1

2

3

4

5

6

7

8

FUNDS	MARCH SETTLEMENT 1953	JUNE SETTLEMENT 1953	NOV. SETTLEMENT 1953	Amount Collected from Nov. 1952 to First Monday in Jan. 1953	REDUCTIONS	Total Reductions and Collected	BALANCE UNCOLLECTED	ADDITIONS	Total Uncollected to First Monday in January, 1953
State—Non-homestead	1009	1355	425	36					
State—Homestead	1203	2906	1673	134					
County Revenue	6446	15577	8967	716					
County Road and Bridge	3621	8752	5038	402					
County Welfare	11507	27808	16007	1278					
County Bond and Interest	2435	5884	3387	270					
R. & B. Sinking	456	1101	634	51					
Town Revenue	1572	3798	2186	175					
Town Road and Bridge	3143	7596	4372	349					
Town Drag	228	550	317	25					
Town State Loan									
Fire	1572	3798	2186	175					
C. & J.	5535	13375	7699	615					
School Local 1 Mill	228	551	317	25					
School Special	9224	19499	9776	633					
School State Loan	2118	5119	2947	235					
Deficiency	9566	23118	13308	1063					
Tuition									
Transportation	455	1101	634	51					
C. & J.	3484	8422	4848	144					
C. O.	1298	3137	1806	387					
	65100	153447	86577	6764					

	SCHOOL DISTRICT NO.	LOCAL 1 MILL	SPECIAL	STATE LOAN	Deficiency	Transport.	C. & J.	C. O.	TOTALS
MARCH SETTLEMENT	School District No. G-C	87	2164	805	3636	173	1324	493	8692
	Ha-C	141	7060	1313	5730	282	2160	805	17691
	Totals	228	9224	2118	9566	455	3484	1298	2673
JUNE SETTLEMENT	School District No. Ha-C	230	11477	2135	9641	459	3512	1308	28762
	G-C	321	8022	2989	13477	642	4910	1929	32185
	Totals	551	19499	5124	23118	1101	8422	3137	60947
NOVEMBER SETTLEMENT	School District No. G-C	243	6065	2256	10189	485	3712	1383	24333
	Ha-C	74	3711	691	3119	189	1136	423	9303
	Totals	317	9776	2947	13308	674	4848	1806	33636
NOVEMBER to JANUARY	School District No. G-C	25	633	235	1063	57	387	144	2538
	Totals	25	633	235	1063	57	387	144	2538
	School District No.								
ADDITIONS	Totals								
	School District No.								
REDUCTIONS	Totals								
	School District No.								

Lake-side Park

Assessment Roll and Tax List of Real Property in the *Down* of *State*

Cass County, Minnesota, for Taxes for the Year 1953.

IN WHOSE NAME ASSESSED	TO WHOM TRANSFERRED	DESCRIPTION OF PROPERTY				TRUE AND FULL VALUATIONS						ASSESSED VALUATIONS				FINAL EQUALIZED VALUE	VALUATIONS BY SCHOOL DISTRICTS AS EQUALIZED BY DEPARTMENT OF TAXATION													REMARKS																						
		SUBDIVISION	Sec. of Lot	Town or Block	No. of Acres of Land	LAND Exclusive of Structures and Improvements	BUILDINGS and Other Structures	MACHINERY Permanently Attached to Real Estate	TOTAL True and Full Value	RURAL		ALL OTHER		MACHINERY Permanently Attached to Real Estate	TOTAL ASSESSED VALUE		Total Assessed Value as Equalized by the Board of Review	District No.	District Rate	District No.	District Rate	District No.	District Rate	District No.	District Rate	Tax Including State Homestead	State Tax on Non-Homestead	SPECIAL TAXES	TOTAL TAXES		PAID	WHEN PAID	Number of Receipt	March Settlement 1954	June Settlement 1954	November Settlement 1954	Penalty	Collections to First Monday in January 1955	Penalty	Delinquent on First Monday in January 1955	Total Delinquent Tax and Penalty											
										Acres	100ths	Up to \$4,000 20%	Over \$4,000 and Non-Homestead 33 1/3%																													Up to \$4,000 25%	Over \$4,000 and Non-Homestead 40%	33 1/3%	Homestead	Rate	Homestead	Rate	Homestead	Rate	Homestead	Rate
U. S. of America		NE 1/4 of NE 1/4	18	142	26			6-1																																												
U. S. of America		NW 1/4 of NE 1/4																																																		
U. S. of America		SW 1/4 of NE 1/4																																																		
U. S. of America		SE 1/4 of NE 1/4																																																		
U. S. of America		NE 1/4 of NW 1/4																																																		
U. S. of America		NW 1/4 of NW 1/4																																																		
U. S. of America	<i>Aloys and Hilda M. Karmetz</i>	SW 1/4 of NW 1/4						<i>4 28</i>	<i>Yes</i>																																											
U. S. of America	<i>Edmond J. Karmetz Robert Turner</i>	SE 1/4 of NW 1/4						<i>3</i>	<i>No</i>																																											
U. S. of America		NE 1/4 of SW 1/4																																																		
U. S. of America		NW 1/4 of SW 1/4																																																		
U. S. of America		SW 1/4 of SW 1/4																																																		
U. S. of America		SE 1/4 of SW 1/4																																																		
U. S. of America		NE 1/4 of SE 1/4																																																		
State of Minnesota		NW 1/4 of SE 1/4																																																		
U. S. of America		SW 1/4 of SE 1/4																																																		
U. S. of America		SE 1/4 of SE 1/4																																																		
								<i>4 28</i>																																												

Lot 7 Sec 28 142-26

ML
4-1-63
4-14-64

~~3/4 Ericbert~~ State
Michigan

2 1/2 of 6 1/2 of 1/2 Bates

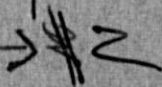
6 1/4 of 1/2 Kemper

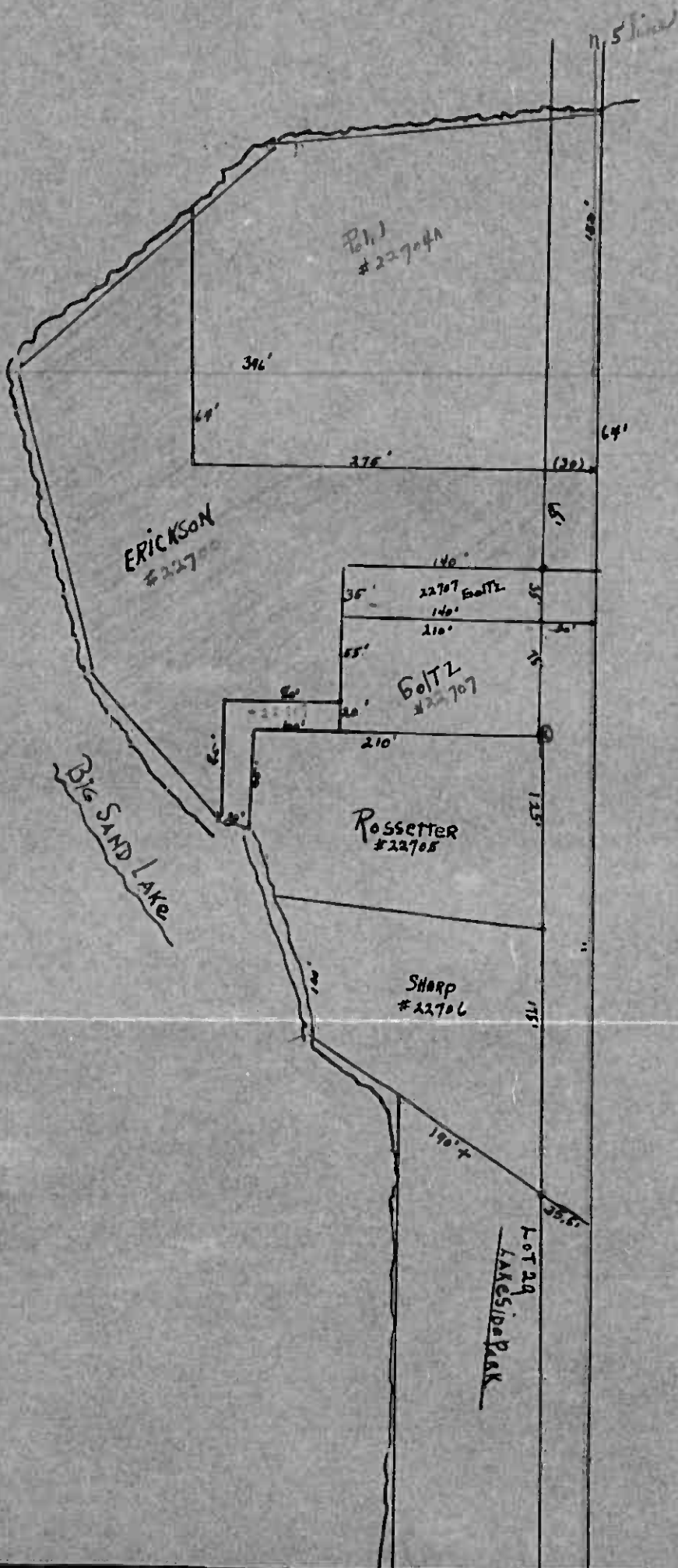
2 1/4 of 6 1/2 Snyder

6 1/2 of 2 1/2 of 6 1/2 Tobin

6 1/4 Pace South

(SE-SW)





Lot 4

E.W. line

NW-864

BIG SAND LAKE

Lot 29
Lakeside Park

Assessment Roll and Tax List of Real Property in the Town of Milton

Cass County, Minnesota, for Taxes for the Year 1953.

Table with columns: IN WHOSE NAME ASSESSED, TO WHOM TRANSFERRED, DESCRIPTION OF PROPERTY, TRUE AND FULL VALUATIONS, ASSESSED VALUATIONS, VALUATIONS BY SCHOOL DISTRICTS AS EQUALIZED BY DEPARTMENT OF TAXATION, TAXES, PAID, WHEN PAID, etc. Includes handwritten entries for Emma M. & Walter A. Frank, Phoebe Swenson, Freda-Beatrice Green, Eugene Siegel, and Rita Mary Strand.

Assessment Roll and Tax List of Real Property in the Town of Lake

Cass County, Minnesota, for Taxes for the Year 1953.

Form 50 (53) (1-1-53)

Lakeside Park

IN WHOSE NAME ASSESSED		TO WHOM TRANSFERRED		DESCRIPTION OF PROPERTY				TRUE AND FULL VALUATIONS				ASSESSED VALUATIONS					FINAL EQUALIZED VALUE	SOLD FOR TAXES	VALUATIONS BY SCHOOL DISTRICTS AS EQUALIZED BY DEPARTMENT OF TAXATION						SPECIAL TAXES	TOTAL TAXES	PAID	WHEN PAID	Number of Receipts	March Settlement 1954	June Settlement 1954	Penalty	November Settlement 1954	Penalty	Collections to First Monday in January 1955	Penalty	Delinquent on First Monday in January 1955	Total Delinquent Tax and Penalty	REMARKS												
Lot	Subdivision	Sec. or Lot	Town or Block	Number of Acres of Land	Acres	100ths	Land	Buildings	Machinery	Total	Rural	Other	Machinery	Total Assessed	District No.	District No.			District No.	District No.	District No.	District No.	Rate	Rate																Rate	Rate	Rate	Rate	State Tax on Non-Homestead	State Tax on Homestead	Month	Day	Year	\$	cts.	\$
1	Lakeside Park	1	1	1																																															
2		2		2																																															
3		3		3																																															
4		4		4																																															
5		5		5																																															
6		6		6																																															
7		7		7																																															
8		8		8																																															
9		9		9																																															
10		10		10																																															
11		11		11																																															
12		12		12																																															
13		13		13																																															
14		14		14																																															
15		15		15																																															
16		16		16																																															
17																																																			
18																																																			
19																																																			
20																																																			

* 56
924
480

28502 436

28938

19438 4658

4842

Lakeside Park

Form 3C(53)

IN WHOSE NAME ASSESSED	TO WHOM TRANSFERRED	DESCRIPTION OF PROPERTY				TRUE AND FULL VALUATIONS						ASSESSED VALUATIONS				FINAL EQUALIZED VALUE	SOLD FOR TAXES	VALUATIONS BY SCHOOL DISTRICTS AS EQUALIZED BY DEPARTMENT OF TAXATION										REMARKS												
		SUBDIVISION	Sec. Lot	Town or Block	No. of Acres of Land	LAND Buildings and Machinery Total True and Full Value	BUILDINGS and Other Structures	MACHINERY Permanently Attached to Real Estate	RURAL		ALL OTHER		MACHINERY Permanently Attached to Real Estate	TOTAL ASSESSED VALUE	Total Assessed Value as Equalized by the Board of Review			Dollars	District No.	District No.	District No.	District No.	Tax Including State Homestead	State Tax on Non-Homestead	SPECIAL TAXES	TOTAL TAXES	PAID		WHEN PAID	Number of Receipts	March Settlement 1954	June Settlement 1954	November Settlement 1954	Collections to First Monday in January 1955	Delinquent on First Monday in January 1955	Total Delinquent Tax and Penalty				
									Rate	Rate	Rate	Rate							Rate	Rate	Rate	Rate															Rate	Rate	Rate	Rate
<i>Aug. G. Erickson</i>		<i>Lakeside Park</i>	21	2												1																								
<i>Wm. Horton</i>	<i>August G. Erickson</i>		22													2																								
<i>Wm. & Lurale Horton</i>			23													3																								
<i>" "</i>	<i>" "</i>	<i>200' of</i>	24													4																								
<i>Dred & Deal W. Schweiger</i>		<i>71.20' of</i>	25													5																								
<i>" "</i>			26													6																								
<i>" "</i>			27													7																								
<i>" "</i>			28													8																								
<i>" "</i>			29													9																								
<i>" "</i>																10																								
<i>" "</i>																11																								
<i>" "</i>																12																								
<i>" "</i>																13																								
<i>" "</i>																14																								
<i>" "</i>																15																								
<i>" "</i>																16																								
<i>" "</i>																17																								
<i>" "</i>																18																								
<i>" "</i>																19																								
<i>" "</i>																20																								

213
220
433

12590 of 12694

3782 8915

Assessment Roll and Tax List of Real Property in the *Town* of *Water*

Cass County, Minnesota, for Taxes for the Year 1953.

Lakeside Park

Form 50 (53) MINN. REV. STAT. ANN. § 470.03

IN WHOSE NAME ASSESSED	TO WHOM TRANSFERRED	SUBDIVISION	Sec. of Lot	Town or Block	Rng.	Number of Acres of Land	No. School District	Indicate here-whether or not	Indicate here-whether or not	TRUE AND FULL VALUATIONS					ASSESSED VALUATIONS					FINAL EQUALIZED VALUE					
										LAND Exclusive of Structures and Improvements	BUILDINGS and Other Structures	MACHINERY Permanently Attached to Real Estate	TOTAL True and Full Value	RURAL		ALL OTHER		MACHINERY Permanently Attached to Real Estate	TOTAL ASSESSED VALUE		Total Assessed Value as Equalized by the Board of Review				
														Homestead Up to \$4,000	Over \$4,000 and Non-Homestead	Homestead Up to \$4,000	Over \$4,000 and Non-Homestead					Homestead Up to \$4,000	Over \$4,000 and Non-Homestead		
Delbert A. & Majina L. Bridge		Outlet A						Yes	No																
Henry P. Boos		Tract #1 of Outlet B						No																	
Benjamin Magnusson		" " B						Yes																	
A. E. & Lela Peterson		" " B						"																	
Robert A. & Myrtle Kasper		" " B						No																	
A. A. Kasper		" " B						"																	
" " "		" " B						"																	
P. M. Kaighien		" " B						"																	
Carl F. & Eva W. Speck		" " B						Yes																	
Rose Nielsen		" " B						No																	
A. L. Erickson		" " B						"																	

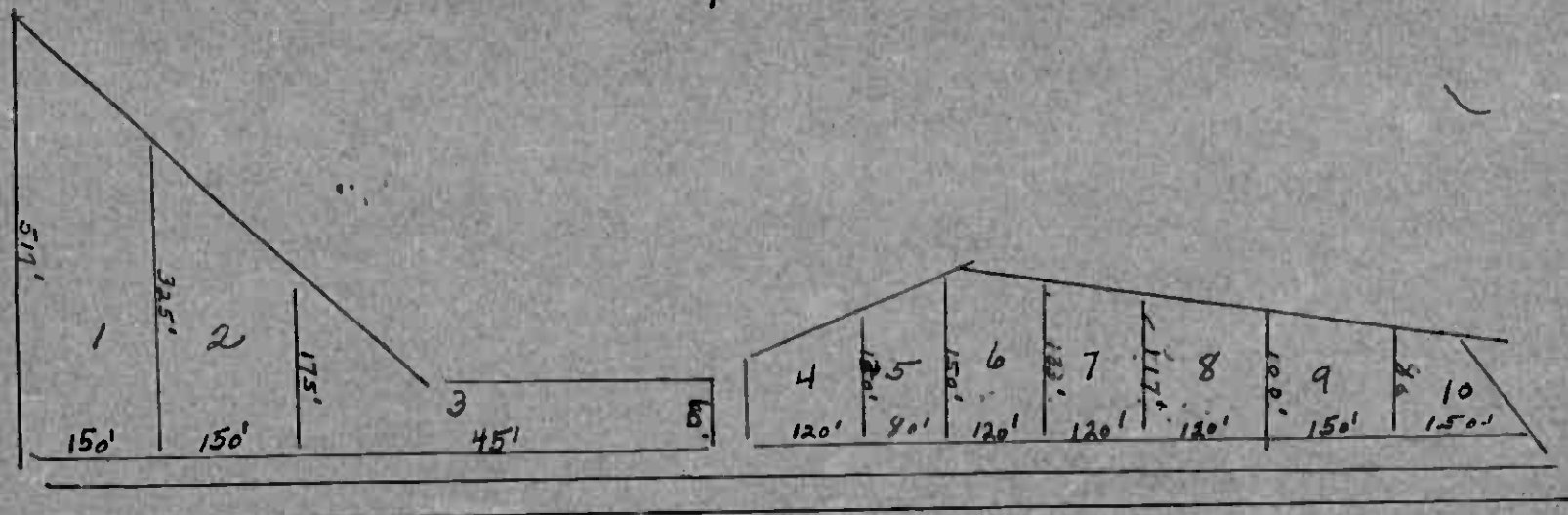
SOLD FOR TAXES	VALUATIONS BY SCHOOL DISTRICTS AS EQUALIZED BY DEPARTMENT OF TAXATION										Tax Including State Homestead	State Tax on Non-Homestead	SPECIAL TAXES	TOTAL TAXES	PAID	WHEN PAID	Number of Receipt	March Settlement 1954	June Settlement 1954	Penalty	November Settlement 1954	Penalty	Collections to First Monday in January 1955	Penalty	Delinquent on First Monday in January 1955	Total Delinquent Tax and Penalty	REMARKS
	District No.	District No.	District No.	District No.	District No.	District No.	District No.	District No.	District No.	District No.																	
	Rate	Rate	Rate	Rate	Rate	Rate	Rate	Rate	Rate	Rate																	
											\$ cts.	\$ cts.	\$ cts.	\$ cts.	Month Day Year	\$ cts.	\$ cts.	\$ cts.	\$ cts.	\$ cts.	\$ cts.	\$ cts.	\$ cts.	\$ cts.	\$ cts.		
															2nd Half Paid OCT 20 1954												
															1st Half Paid MAY 3 1 1954												
2															2 PAID IN FULL MAY 14 1954												
3															1st Half Paid MAY 3 1 1954												
4															PAID IN FULL MAY 3 1 1954												
5															PAID IN FULL MAY 3 1 1954												
6															PAID IN FULL MAY 1 8 1954												
7															1st Half Paid MAY 3 1 1954												
8															2nd Half Paid OCT 20 1954												
9															1st Half Paid MAY 3 1 1954												
10															2nd Half Paid OCT 30 1954												
11															1st Half Paid MAY 3 1 1954												
12															2nd Half Paid OCT 26 1954												
13															1st Half Paid MAY 2 8 1954												
14															2nd Half Paid OCT 3 1 1954												
15															PAID IN FULL MAY 1 1954												
16															PAID IN FULL FEB 1 1 1954												

$\frac{126}{156}$ 282
 8202 72 8274

58 4269 3917

OK
4-1-53

Slater Township
Division of Outlot "B"
Lakeside Park



- Lot 1: Henry P. Boos
 Lot 2: Benjamin Magnuson
 Lot 3: A. C. & Lelah Peterson
 Lot 4: Robert A. & Myrtle Kasper
 Lot 5: H. A. W. Kasper

- Lot 6: H. A. W. Kasper
 Lot 7: R. M. Kriglie
 Lot 8: Carel C. Cardspeck
 Lot 9: Rose Fickler
 Lot 10: A. J. Erickson

