

Assessment & Tax list - 1961

Shingobee















Assessment of

COLLECTIONS OF TAXES OF 1961, Town OF *Stingobee*, CASS COUNTY, MINNESOTA

FORM 314 WILSON-DAY COMPANY, MINNEAPOLIS

NAME OF OWNER

FUNDS	MARCH SETTLEMENT 1962	JUNE SETTLEMENT 1962	NOV. SETTLEMENT 1962	Amount Collected from Nov. 1962 to First Monday in Jan. 1963	REDUCTIONS	Total Reductions and Collected	BALANCE UNCOLLECTED	ADDITIONS	Total Uncollected to First Monday in January, 1963
State-Non-Homestead,	12632	64162	37648	1233					
State-Homestead,	10952	67047	29972	1663					
County Revenue,	102675	389715	176519	9628					
County Road and Bridge,	55711	211456	95778	5224					
County Welfare,	159611	605824	274404	14966					
County Bond and Interest,	3036	11524	5220	285					
C. H. Bldg.	5571	21146	9578	522					
Agri. Bldg.	1393	5286	2394	131					
Ch. Def.	1838	6779	3161	172					
Town Revenue,	5571	21146	9578	523					
Town Road and Bridge,	27855	105727	47889	2612					
Town State Loan,									
Fire	8357	21146	14367	783					
Cem.	5571	31719	9578	523					
School Local 1 Mill,									
School Special,	127637	412659	193235	10759					
School State Loan,									
Deficiency	79805	302912	137201	7483					
Tuition C.O.	108497	411812	186528	10174					
Transportation B. & D.	11755	44617	20209	1102					
PERA	9053	34362	15564	849					
Bldg.	36184	137342	62208	3393					
Welf. Def.	30334	115139	52151	2844					
PERA	15794	59949	27153	1481					
	819832	3081669	1400335	76350					

	SCHOOL DISTRICT NO.	LOCAL 1 MILL.	SPECIAL	STATE LOAN	Deficiency	C.O.	B. & D.	PERA	Bldg.	TOTALS
MARCH SETTLEMENT	119a 1197a		11639 115978		13338 66467	18134 90363	1965 9790	1513 7540	6048 30136	52637 320294
	Totals		127637		79805	108497	11755	9053	36184	372931
JUNE SETTLEMENT	119a 1197a		115984 296675		132917 169995	180702 231110	19578 25039	15078 19284	60265 77077	524524 819180
	Totals		412659		302912	411812	44617	34362	137342	1343704
NOVEMBER SETTLEMENT	119a 1197a		46211 147024		52957 84244	71996 114532	7800 12409	6007 9557	24011 38197	208982 405963
	Totals		193235		137201	186528	20209	15564	62208	614945
NOVEMBER to JANUARY	119a 1197a		2300 8459		2636 4847	3584 6590	388 714	299 550	1195 2198	10402 23358
	Totals		10759		7483	10174	1102	849	3393	33760
ADDITIONS										
	Totals									
REDUCTIONS										
	Totals									

Real Estate

Ball's 1st  
Gitchee 142-31  
Sunrise 1st  
Beach  
Stingobee  
Island  
Chippewa 1st  
Point  
Sunrise  
kabecona  
Ojibway  
Wa-Ba-Ji











Assessment Roll and Tax List of Real Property in the Town of Shingobee

\* Indicate Type of Property: R-Residential, C-Commercial, I-Industrial, U-Utility, F-Farm, L-Lakeshore, T-Timber, M-Mineral

Cass County, Minnesota, for Taxes for the Year 1961.

Table with columns: IN WHOSE NAME ASSESSED, DESCRIPTION OF PROPERTY, TRUE AND FULL VALUATIONS, ASSESSED VALUATIONS, VALUATIONS BY SCHOOL DISTRICTS AS EQUALIZED BY DEPARTMENT OF TAXATION, TAXES, PAID, WHEN PAID, Number of Receipt, March Settlement 1962, June Settlement 1962, November Settlement 1962, Collections to First Monday in January 1963, Delinquent on First Monday in January 1963, Total Delinquent Tax and Penalty, REMARKS.

(CONTINUED NEXT PAGE)

163.29

2133 74=2207 23042 82612 1304 106958 775=1429 849=3634

794 15 26535

10 08

Shingobee Island Point Surfers







Assessment Roll and Tax List of Real Property in the Town of Shingobee

Cass County, Minnesota, for Taxes for the Year 1961.

\* Indicate Type of Property: R-Residential, C-Commercial, I-Industrial, U-Utility, F-Farm, L-Lakeshore, T-Timber, M-Mineral

Table with columns: IN WHOSE NAME ASSESSED, DESCRIPTION OF PROPERTY, TRUE AND FULL VALUATIONS, VALUATIONS BY SCHOOL DISTRICTS AS EQUALIZED BY DEPARTMENT OF TAXATION, TAXES, PAID, WHEN PAID, Number of Receipt, March Settlement, June Settlement, November Settlement, Collections to First Monday in January 1963, Delinquent on First Monday in January 1963, Total Delinquent Tax and Penalty, REMARKS.

Real 141

Shingobee Island Point Surtree Kabekona Ojibway Ma-Ba-Ma-Bay















Twp. Rd. - Not on line

Sariff owns to R.R. on both sides of Cartway Has a cabin

5th Lake

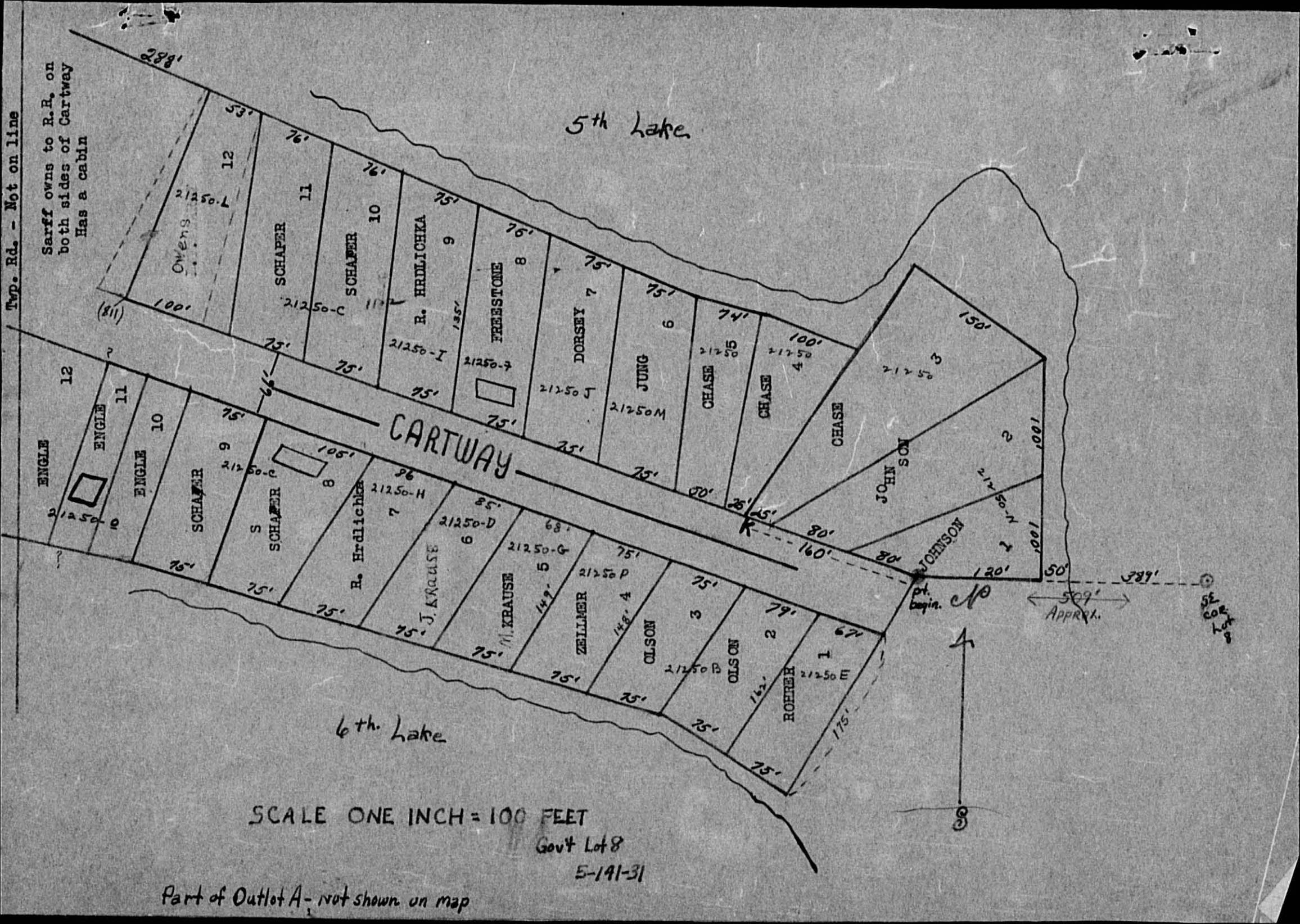
6th Lake

SCALE ONE INCH = 100 FEET

Gov't Lot 8

E-141-31

Part of Outlot A - not shown on map

































































Assessment Roll and Tax List of Real Property in the Town of Shingobee

\* Indicate Type of Property: R-Residential, C-Commercial, I-Industrial, U-Utility, F-Farm, L-Lakeshore, T-Timber, M-Mineral

Cass County, Minnesota, for Taxes for the Year 1961.

Table with columns: IN WHOSE NAME ASSESSED, DESCRIPTION OF PROPERTY, TRUE AND FULL VALUATIONS, ASSESSED VALUATIONS, VALUATIONS BY SCHOOL DISTRICTS AS EQUALIZED BY DEPARTMENT OF TAXATION, TAX INCLUDING STATE HOMESTEAD, SPECIAL TAXES, TOTAL TAXES, PAID, WHEN PAID, Number of Receipt, March Settlement 1962, June Settlement 1962, November Settlement 1962, Collections to First Monday in January 1963, Delinquent on First Monday in January 1963, Total Delinquent Tax and Penalty, REMARKS.

Address: 142-31, Shingobee, Cass County, Minnesota, 55075







Assessment Roll and Tax List of Real Property in the Town of Shingobe, Cass County, Minnesota, for Taxes for the Year 1961.

\* Indicate Type of Property: R-Residential, C-Commercial, I-Industrial, U-Utility, F-Farm, L-Lakeshore, T-Timber, M-Mineral

Table with columns: IN WHOSE NAME ASSESSED, DESCRIPTION OF PROPERTY, TRUE AND FULL VALUATIONS, ASSESSED VALUATIONS, and FINAL EQUALIZED VALUE. Includes entries for Nels D. Olson and Basil Skofner.

Cass County, Minnesota, for Taxes for the Year 1961.

Table with columns: VALUATIONS BY SCHOOL DISTRICTS AS EQUALIZED BY DEPARTMENT OF TAXATION, TAXES, PAID, WHEN PAID, and REMARKS. Includes handwritten notes and calculations.

Vertical text on the right edge: Addn. in Beach, Shingobe Island, Chippewa Beach, Spring Lake, Ojibway, Wa-Pa-Me-Me Bay.















Assessment Roll and Tax List of Real Property in the

Town of Shingabe

\* Indicate Type of Property: R-Residential, C-Commercial, I-Industrial, U-Utility, F-Farm, L-Lakeshore, T-Timber, M-Mineral

Cass County, Minnesota, for Taxes for the Year 1961.

Form 50 MILLER-DAVIS CO., MINNEAPOLIS

Table with columns: IN WHOSE NAME ASSESSED, DESCRIPTION OF PROPERTY, TRUE AND FULL VALUATIONS, ASSESSED VALUATIONS, VALUATIONS BY SCHOOL DISTRICTS AS EQUALIZED BY DEPARTMENT OF TAXATION, TAXES, PAID, WHEN PAID, Number of Receipt, March Settlement, June Settlement, Penalty, November Settlement, Penalty, Collections to First Monday in January 1963, Delinquent on First Monday in January 1963, Total Delinquent Tax and Penalty, REMARKS.

(CONT ON NEXT PAGE)

Vertical text on the right edge of the page, including 'Add'l No.', 'Shingabe', 'Cass County', 'Minnesota', '142-31'.





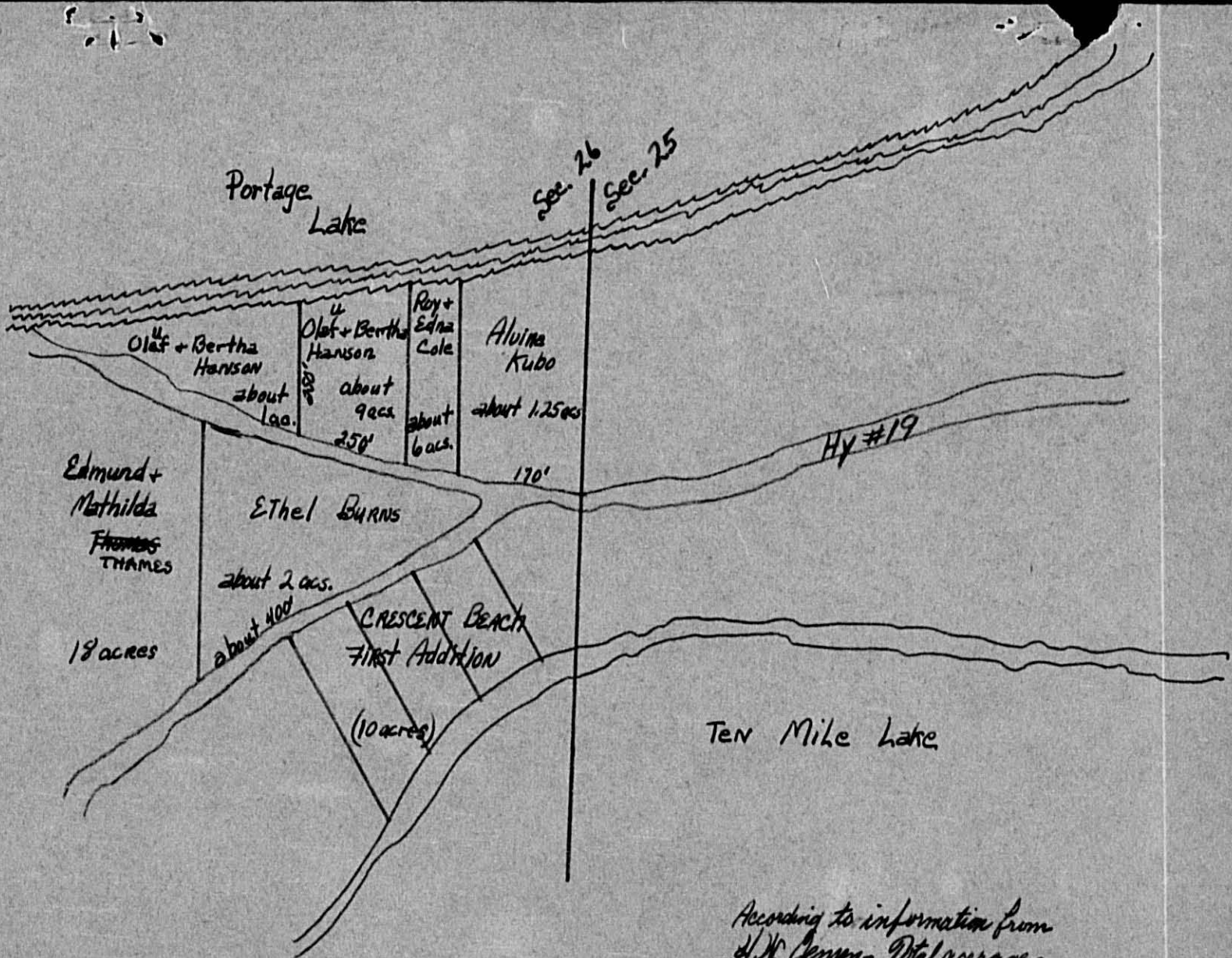












According to information from  
H. W. Jensen - Total acreage  
of Lot 3 - Sec. 26 is 33.75 acs.  
141-31



Assessment Roll and Tax List of Real Property in the Town of Shingobee, Minnesota

Form 50 MILLER-DAVIS CO., MINNEAPOLIS

\* Indicate Type of Property: R-Residential, C-Commercial, I-Industrial, U-Utility, F-Farm, L-Lakeshore, T-Timber, M-Mineral

Table with columns: IN WHOSE NAME ASSESSED, DESCRIPTION OF PROPERTY, TRUE AND FULL VALUATIONS, ASSESSED VALUATIONS, FINAL EQUALIZED VALUE. Includes handwritten entries for Ethel D. Burns and Mrs. Bertha Hanson.

Ethel D. Burns

Mrs. Bertha Hanson

Cass County, Minnesota, for Taxes for the Year 1961.

Table with columns: VALUATIONS BY SCHOOL DISTRICTS AS EQUALIZED BY DEPARTMENT OF TAXATION, TAXES, PAID, WHEN PAID, REMARKS. Includes handwritten entries for tax amounts and dates.

Vertical text on the right edge of the page, including 'Shingobee Island' and other property-related notes.





























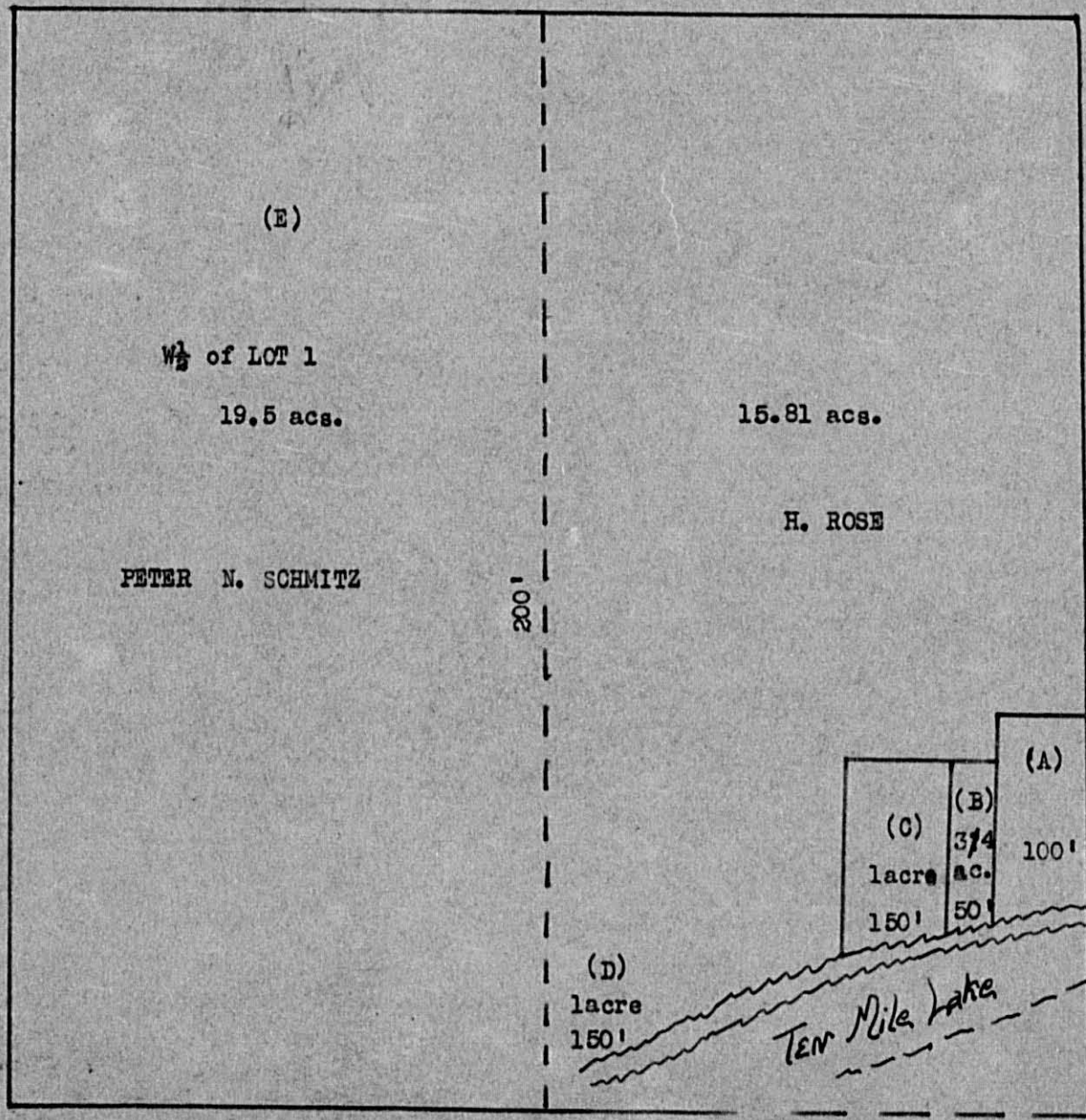












- A. T. KOLDERIE
- B. "
- C. ELMER NORDLAND
- D. HENRY ROSE
- E. PETER N. SCHMITZ

Except for distance given this map is not exact as we don't have the distance of lake











































Assessment Roll and Tax List of Real Property in the Town of Shingobee, Cass County, Minnesota, for Taxes for the Year 1961.

Cass County, Minnesota, for Taxes for the Year 1961.

FORM 50 MILLER-DAVIS CO., MINNEAPOLIS

\* Indicate Type of Property: R-Residential, C-Commercial, I-Industrial, U-Utility, F-Farm, L-Lakeshore, T-Timber, M-Mineral

Table with columns: IN WHOSE NAME ASSESSED, DESCRIPTION OF PROPERTY, TRUE AND FULL VALUATIONS, ASSESSED VALUATIONS, VALUATIONS BY SCHOOL DISTRICTS AS EQUALIZED BY DEPARTMENT OF TAXATION, TAXES, PAID, WHEN PAID, Number of Receipt, March Settlement 1962, June Settlement 1962, Penalty, November Settlement 1962, Penalty, Collections to First Monday in January 1963, Penalty, Delinquent on First Monday in January 1963, Total Delinquent Tax and Penalty, REMARKS.

142-31

(CONT. NEXT PAGE)

Shingobee Island, Kabokona, Ojibway Bay















Assessment Roll and Tax List of Real Property in the town of Shingobee,  
\* Indicate Type of Property: R-Residential, C-Commercial, I-Industrial, U-Utility, F-Farm, L-Lakeshore, T-Timber, M-Mineral

Table with columns: IN WHOSE NAME ASSESSED, DESCRIPTION OF PROPERTY, TRUE AND FULL VALUATIONS, ASSESSED VALUATIONS, FINAL EQUALIZED VALUE. Includes handwritten entries for Robert M. & Hope E. Living, Henry & Agnes Erickson, etc.

Cass County, Minnesota, for Taxes for the Year 1961.

Table with columns: SOLD FOR TAXES, VALUATIONS BY SCHOOL DISTRICTS AS EQUALIZED BY DEPARTMENT OF TAXATION, SPECIAL TAXES, TOTAL TAXES, PAID, WHEN PAID, Number of Receipt, March Settlement, June Settlement, November Settlement, Collections to First Monday in January 1963, Delinquent on First Monday in January 1963, Total Delinquent Tax and Penalty, REMARKS. Includes handwritten entries for Abate #8671, etc.

142-51

Shingobee Island Point Chippewa Island Kabekona Stripes Wa-Ba-Me Bay







































































Assessment Roll and Tax List of Real Property in the Town of Kingslee, \* Indicate Type of Property: R-Residential, C-Commercial, I-Industrial, U-Utility, F-Farm, L-Lakeshore, T-Timber, M-Mineral

Cass County, Minnesota, for Taxes for the Year 1961.

Table with columns: IN WHOSE NAME ASSESSED, DESCRIPTION OF PROPERTY, TRUE AND FULL VALUATIONS (RURAL, ALL OTHER, MACHINERY, Seasonal and Recreational Cabins, TOTAL ASSESSED VALUE), VALUATIONS BY SCHOOL DISTRICTS AS EQUALIZED BY DEPARTMENT OF TAXATION, TAXES (SOLD FOR TAXES, PAID, WHEN PAID, SPECIAL TAXES, TOTAL TAXES), and REMARKS. Includes handwritten entries for property owners like Russell & Nancy Engel, Julius C. & Minnie A. Johnson, etc.

142-31

Vertical text on the right edge of the page, including 'Shingobee Island' and other location names.



















Assessment Roll and Tax List of Real Property in the Town of Shingobee, Cass County, Minnesota, for Taxes for the Year 1961.

Form 50 - MILLER-DAVIS CO., MINNEAPOLIS

\* Indicate Type of Property: R-Residential, C-Commercial, I-Industrial, U-Utility, F-Farm, L-Lakeshore, T-Timber, M-Mineral

Table with columns: IN WHOSE NAME ASSESSED, DESCRIPTION OF PROPERTY, TRUE AND FULL VALUATIONS (RURAL, ALL OTHER, MACHINERY, Seasonal and Recreational Cabins), ASSESSED VALUATIONS, FINAL EQUALIZED VALUE.

Cass County, Minnesota, for Taxes for the Year 1961.

Table with columns: VALUATIONS BY SCHOOL DISTRICTS AS EQUALIZED BY DEPARTMENT OF TAXATION, Tax Including State Homestead, State Tax on Non-Homestead, SPECIAL TAXES, TOTAL TAXES, PAID, WHEN PAID, Number of Receipt, March Settlement 1962, June Settlement 1962, Penalty, November Settlement 1962, Penalty, Collections to First Monday in January 1963, Delinquent on First Monday in January 1963, Total Delinquent Tax and Penalty, REMARKS.

142-31

142-31

Handwritten notes: A. J. Oberley, Wiley J. & Bertrude C. Potter

Vertical text on the right edge: Direction, Assessor, Auditor, Treasurer, Clerk, etc.



Assessment Roll and Tax List of Real Property in the Town of Shingobee

\* Indicate Type of Property: R-Residential, C-Commercial, I-Industrial, U-Utility, F-Farm, L-Lakeshore, T-Timber, M-Mineral

Table with columns: IN WHOSE NAME ASSESSED, DESCRIPTION OF PROPERTY, TRUE AND FULL VALUATIONS, ASSESSED VALUATIONS, FINAL EQUALIZED VALUE. Includes handwritten entries for U.S. of America, Arthur Harold Gruber, Harry Paddock Wiley, Leonard Stephen Gruber, Roy & Agnes Mills.

Cass County, Minnesota, for Taxes for the Year 1961.

Table with columns: SOLD FOR TAXES, VALUATIONS BY SCHOOL DISTRICTS AS EQUALIZED BY DEPARTMENT OF TAXATION, Tax Including State Homestead, SPECIAL TAXES, TOTAL TAXES, PAID, WHEN PAID, Number of Receipt, March Settlement, June Settlement, November Settlement, Penalty, Collections to First Monday in January 1963, Delinquent on First Monday in January 1963, Total Delinquent Tax and Penalty, REMARKS. Includes handwritten entries for tax payments and dates.

142-51

Vertical text on the right edge of the page, including 'Shingobee Island' and other location names.











Assessment Roll and Tax List of Real Property in the Town of Shingobee

\* Indicate Type of Property: R-Residential, C-Commercial, I-Industrial, U-Utility, F-Farm, L-Lakeshore, T-Timber, M-Mineral

Cass County, Minnesota, for Taxes for the Year 1961.

Table with columns: IN WHOSE NAME ASSESSED, DESCRIPTION OF PROPERTY, TRUE AND FULL VALUATIONS, ASSESSED VALUATIONS, VALUATIONS BY SCHOOL DISTRICTS AS EQUALIZED BY DEPARTMENT OF TAXATION, SOLD FOR TAXES, PAID, WHEN PAID, Number of Receipt, March Settlement, June Settlement, November Settlement, Collections to First Monday in January 1963, Delinquent on First Monday in January 1963, Total Delinquent Tax and Penalty, REMARKS.

142-31

142-31

Shingobee Island, Shingobee Beach, Shingobee Point, Shingobee Springs, Shingobee Highway, Shingobee Bay











Assessment Roll and Tax List of Real Property in the Town of Singabe, Minnesota

Cass County, Minnesota, for Taxes for the Year 1961.

Form 50 MILLER-DAVIS CO., MINNEAPOLIS

\* Indicate Type of Property: R-Residential, C-Commercial, I-Industrial, U-Utility, F-Farm, L-Lakeshore, T-Timber, M-Mineral

Table with columns: IN WHOSE NAME ASSESSED, DESCRIPTION OF PROPERTY, TRUE AND FULL VALUATIONS, ASSESSED VALUATIONS, VALUATIONS BY SCHOOL DISTRICTS AS EQUALIZED BY DEPARTMENT OF TAXATION, SOLD FOR TAXES, PAID, WHEN PAID, SPECIAL TAXES, TOTAL TAXES, and REMARKS. Includes handwritten entries for various property owners like Margaret J. McLaughlin and Floyd E. + Reva Bennett.

(CONT NEXT PAGE)

142-31

142-31

Vertical text on the right edge of the page, including '1st. Add'n. Singabe' and other location-related notes.



























































































Assessment Roll and Tax List of Real Property in the Town of Shingobee, Minnesota

Cass County, Minnesota, for Taxes for the Year 1961.

Form 50 - MILLER-DAVIS CO., MINNEAPOLIS

\* Indicate Type of Property: R-Residential, C-Commercial, I-Industrial, U-Utility, F-Farm, L-Lakeshore, T-Timber, M-Mineral

Table with columns: IN WHOSE NAME ASSESSED, DESCRIPTION OF PROPERTY, TRUE AND FULL VALUATIONS, ASSESSED VALUATIONS, VALUATIONS BY SCHOOL DISTRICTS AS EQUALIZED BY DEPARTMENT OF TAXATION, SOLD FOR TAXES, PAID, WHEN PAID, and REMARKS. Includes handwritten entries for Ruth C. & Owen C. Kaychoff, Ethel B. Burns, etc.

Vertical text on the left edge: 145, 146, 147, 148, 149, 150, 151, 152, 153, 154, 155, 156, 157, 158, 159, 160, 161, 162, 163, 164, 165, 166, 167, 168, 169, 170, 171, 172, 173, 174, 175, 176, 177, 178, 179, 180, 181, 182, 183, 184, 185, 186, 187, 188, 189, 190, 191, 192, 193, 194, 195, 196, 197, 198, 199, 200

Vertical text on the right edge: Shadur, Sunrise Beach, Pharrton, Snokys Add'n to Walker, Belaford's 1st. Add'n. Part to Shingobee Island, Reservoir, Wa-Ba-Na-Me Bay











Assessment Roll and Tax List of Real Property in the Town of Sunrise of Sunlight

\* Indicate Type of Property: R-Residential, C-Commercial, I-Industrial, U-Utility, F-Farm, L-Lakeshore, T-Timber, M-Mineral

Cass County, Minnesota, for Taxes for the Year 1961.

Table with columns: IN WHOSE NAME ASSESSED, DESCRIPTION OF PROPERTY, TRUE AND FULL VALUATIONS, ASSESSED VALUATIONS, VALUATIONS BY SCHOOL DISTRICTS AS EQUALIZED BY DEPARTMENT OF TAXATION, TAXES, PAID, WHEN PAID, Number of Receipt, March Settlement 1962, June Settlement 1962, November Settlement 1962, Collections to First Monday in January 1963, Delinquent on First Monday in January 1963, Total Delinquent Tax and Penalty, REMARKS.

142-31, Sunrise Heights, Gitchie Guance Beach, Breezy Point, Crescent Beach, Wa-Ba-Me Bay

Shady Lane, Pharrion Beach, Smokeys Add'n to Walker, Belford's 1st. Add'n to Shingobee Island, Park Point, Hanson's Point





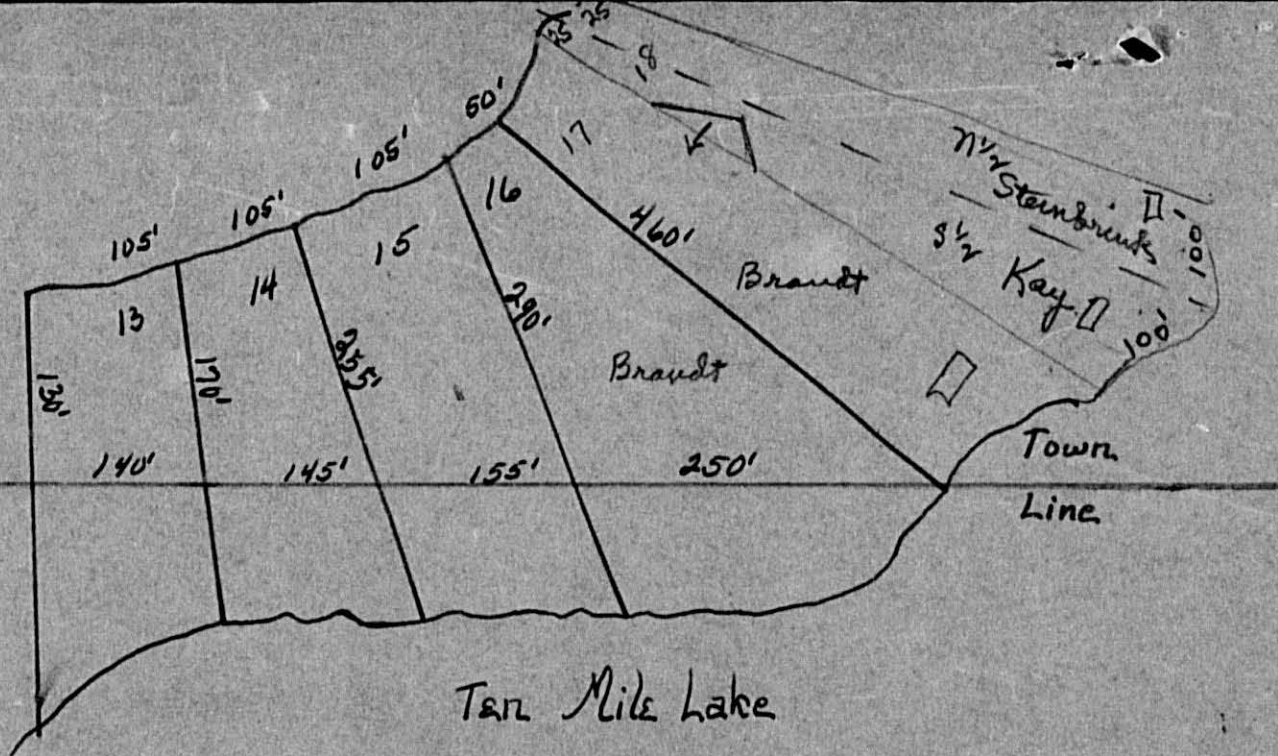






Shingbee Twp.

Hiram Twp.



Lots 13-14-15-16

Chariton Beach











Assessment Roll and Tax List of Real Property in the Town of Shingbee of Minnesota

Cass County, Minnesota, for Taxes for the Year 1961.

FORM 50 MILLER-DAVIS CO., MINNEAPOLIS \* Indicate Type of Property: R-Residential, C-Commercial, I-Industrial, U-Utility, F-Farm, L-Lakeshore, T-Timber, M-Mineral

Table with columns: IN WHOSE NAME ASSESSED, DESCRIPTION OF PROPERTY, TRUE AND FULL VALUATIONS, ASSESSED VALUATIONS, VALUATIONS BY SCHOOL DISTRICTS AS EQUALIZED BY DEPARTMENT OF TAXATION, TAXES, PAID, WHEN PAID, Number of Receipt, March Settlement 1962, June Settlement 1962, Penalty, November Settlement 1962, Penalty, Collections to First Monday in January 1963, Delinquent on First Monday in January 1963, Total Delinquent Tax and Penalty, REMARKS.

Vertical text on the left margin: Wa-Ba-Ma-He Bay, Cr. Park Point to Shingbee Island, P. Brandy, S. G. Ritchie Games Hall, Falls St. a. S. Chariton He Beach.

Vertical text on the right margin: Christmas Point, Shiogbee Island, Personal Hanson's Point.



























