

ASSESSMENT & TAX LIST - 1959

Shingobee

NAME OF OWNER

TABULAR SCHEDULE OF VALUATIONS,
LEVIED IN THE Jowa OF Shingabe

RATES AND TAXES
COUNTY OF CASS, STATE OF MINNESOTA

School District No.	VALUATION BY SCHOOL DISTRICTS				RATE OF STATE TAXES		RATE OF COUNTY TAXES					RATE OF TOWN TAXES										SCHOOL TAXES		TAXES LEVIED																																									
	Agri-cultural Lands	Non-Agri-cultural Lands	Personal Property	Total Value of all Property except Money and Credits	Total Rate of State Tax	Rev.	R. & B.	Welfare	Bonds and Int.	Other	Total Rate of County Tax	Rev.	R. & B.	Drag Tax	State Loan	Other	Total Rate of Town Tax	Local	Special	State Loan	Deficiency	Tuition	Transportation	Other	Total Rate of Sch'l Tax	Total Rate of all Taxes	Local 1 Mill	Special	State Loan	Def.	C.O.	B+L	PERA	Total School Taxes	FUNDS	Rate	Amounts																												
119	27,933	116,458	36,427	177,271	8.10	35.68	15.61	9.5		5.79	2.9		2.5	2.5	2.	18.	25	50	46.25	46.25	17.91	10.12	3.25	17.91	10.12	3.25	102.53	257.67	127.53	282.67	789.38	728,480	146,034	56,551	31,954	10,262	673,844	260,941	147,444	47,351	3,237,39	185,806	737.12	132,351	63,250.3	26,590.7	10,981.94	35,454	35,454	354.54	15,954.4	443.18	443.18	35,454	3,190.88	807.418	8,198.78	31,749.2	17,939.8	5,761.3	218,179.9	499,445.4	40,735.96	9,208.58	499,445.4
				N.H. 6.22 14.32		Co. Nurse R+B Bldg. Agric. Assn. Drainage		2. 2. .5 1.12		P.P. excluding State Tax										A - 249.57 NA - 274.57		County: R+B Fed Projects 886.35 PERA 1026.40 Agric Assn. 88.63 Drainage 198.54						More Phone Cemetery 443.18 443.18 35,454						School Local 1 Mill, School Special, School State Loan, Deficiency, Tuition, Transportation, C.O., B+L, PERA.						Total Taxes Real Estate 40,735.96 Pers Prop. 9,208.58 Total 499,445.4																									

Total Number of Acres 11,764.08
Total Levy, \$ 47,944.54
L.C. Peterson
Auditor of said County and State aforesaid, do hereby certify that the foregoing is a true and correct Schedule, showing the valuation of all the taxable property, in the Town of Shingabe, in said County, the several rates of Taxation and Totals of the several Tax Funds levied thereon for the year A. D. 1957.
Witness my hand and official seal, this 22nd day of December A. D. 1957.
L.C. Peterson County Auditor
By Helen Billen, Deputy

SEAL

Real Estate

Kaboons Springs

Admission

Assessment o

Form 314 WILSON-JACOBY COMPANY, MINNEAPOLIS

COLLECTIONS OF TAXES OF 1954

Town OF Shingobee, CASS COUNTY, MINNESOTA

FUNDS	MARCH SETTLEMENT 1954	JUNE SETTLEMENT 1954	NOV. SETTLEMENT 1954	Amount Collected from Nov. 1954 to First Monday in Jan. 1955	REDUCTIONS	Total Reductions and Collected	BALANCE UNCOLLECTED	ADDITIONS	Total Uncollected to First Monday in January, 1955
State-Non-Homestead,	10421	42476	18614	81					
State-Homestead,	15133	75651	34460	1018					
County Revenue,	106432	337351	157755	4486					
County Road and Bridge,	44744	141824	66321	1886					
County Welfare,	184794	585732	273905	7788					
County Bond and Interest,									
R. & B. Bldg. Proj.	14915	47274	22107	628					
PERA	17271	54744	25600	728					
Co. Nurse	5966	18910	8843	251					
Town Revenue,	5966	18910	8843	251					
Town Road and Bridge,	26847	85095	39793	1132					
Town Drag,									
Town State Loan,									
Fire	7457	23637	11053	315					
Phone	7457	23637	11053	315					
Cemetery	5966	18910	8843	251					
School Local 1 Mill,									
School Special,	140914	434674	195261	5416					
School State Loan,									
Deficiency	137961	437290	204490	5815					
Tuition									
Transportation									
C.O.	53424	169338	79187	2251					
S. & D.	30188	95684	44744	1272					
PERA	9694	30728	14369	408					
R. & B. Bldg.	5966	18910	8843	251					
Agri. Assn	1491	4727	2210	62					
Plans.	3341	10591	4952	142					
Totals	836348	2676093	1241246	34747					

	SCHOOL DISTRICT NO.	LOCAL 1 MILL	SPECIAL	STATE LOAN	Deficiency	C.O.	S. & D.	PERA	TOTALS
MARCH SETTLEMENT	119a 1197a		8233 132681		15231 122730	5898 47526	3333 26855	1070 8624	33765 338416
Totals			140914		137961	53424	30188	9694	372181
JUNE SETTLEMENT	119a 1197a		38072 366602		70432 366858	27275 142063	15412 80272	4949 25779	156140 1011574
Totals			434674		437290	169338	95684	30728	1167714
NOVEMBER SETTLEMENT	119a 1197a		25809 169452		47748 156742	18490 60697	10447 34297	3355 11014	105849 432202
Totals			195261		204490	79187	44744	14369	538051
NOVEMBER to JANUARY	119a 1197a		870 4546		1610 4205	623 1628	352 920	113 295	3568 11594
Totals			5416		5815	2251	1272	408	15162
ADDITIONS									
Totals									
REDUCTIONS									
Totals									

Real Estate
Shingobee Island
Outwaga Point
Kabecon Springs
Add'n to
Juno Beach

Assessment Roll and Tax List of Real Property in the Town of Shingobee, Cass County, Minnesota, for Taxes for the Year 1959.

Cass County, Minnesota, for Taxes for the Year 1959.

Table with columns: IN WHOSE NAME ASSESSED, TO WHOM TRANSFERRED, DESCRIPTION OF PROPERTY, TRUE AND FULL VALUATIONS, ASSESSED VALUATIONS, VALUATIONS BY SCHOOL DISTRICTS AS EQUALIZED BY DEPARTMENT OF TAXATION, SOLD FOR TAXES, PAID, WHEN PAID, Number of Receipt, March Settlement 1960, June Settlement 1960, November Settlement 1960, Collections to First Monday in January 1961, Delinquent on First Monday in January 1961, Total Delinquent Tax and Penalty, REMARKS.

141-31

142-31

Shingobee Island

Shingobee Point

Kabokona Springs

Quincy James Beach

1870

27.72 abated

490

27.72 dk

Assessment Roll and Tax List of Real Property in the Town of Shungobe, Cass County, Minnesota, for Taxes for the Year 1959.

Cass County, Minnesota, for Taxes for the Year 1959.

* Indicate Type of Property: R-Residential, C-Commercial, I-Industrial, U-Utility, F-Farm, L-Lakeshore, T-Timber, M-Mineral

Table with columns: IN WHOSE NAME ASSESSED, TO WHOM TRANSFERRED, DESCRIPTION OF PROPERTY, TRUE AND FULL VALUATIONS, ASSESSED VALUATIONS, VALUATIONS BY SCHOOL DISTRICTS AS EQUALIZED BY DEPARTMENT OF TAXATION, TAXES, PAID, WHEN PAID, etc.

Assessment Roll and Tax List of Real Property in the Town of Shungabeau

Indicate Type of Property: R-Residential, C-Commercial, I-Industrial, U-Utility, F-Farm, L-Lakeshore, T-Timber, M-Mineral

Cass County, Minnesota, for Taxes for the Year 1959.

141-31

Main table with columns: IN WHOSE NAME ASSESSED, TO WHOM TRANSFERRED, DESCRIPTION OF PROPERTY, TRUE AND FULL VALUATIONS, ASSESSED VALUATIONS, VALUATIONS BY SCHOOL DISTRICTS AS EQUALIZED BY DEPARTMENT OF TAXATION, TAXES, PAID, WHEN PAID, etc.

142-31

143-31

144-31

145-31

146-31

147-31

148-31

149-31

150-31

151-31

152-31

153-31

154-31

155-31

156-31

157-31

158-31

159-31

160-31

161-31

162-31

163-31

164-31

165-31

166-31

167-31

168-31

169-31

170-31

Vertical text on the right edge of the page, including 'Shungabeau Island' and 'Kabeokne Springs'.

Assessment Roll and Tax List of Real Property in the Town of Shungies

Cass County, Minnesota, for Taxes for the Year 1959.

Indicate Type of Property: R-Residential, C-Commercial, I-Industrial, U-Utility, F-Farm, L-Lakeshore, T-Timber, M-Mineral

Table with columns: IN WHOSE NAME ASSESSED, TO WHOM TRANSFERRED, DESCRIPTION OF PROPERTY, TRUE AND FULL VALUATIONS, ASSESSED VALUATIONS, VALUATIONS BY SCHOOL DISTRICTS AS EQUALIZED BY DEPARTMENT OF TAXATION, TAXES, PAID, WHEN PAID, Number of Receipt, March Settlement, June Settlement, Penalty, November Settlement, Collections to First Monday in January 1961, Delinquent on First Monday in January 1961, Total Delinquent Tax and Penalty, REMARKS.

141-31

142-31

Chitawa Point

Kabokona Springs

Adin to name beach

Assessment Roll and Tax List of Real Property in the Town of Shungabe

Cass County, Minnesota, for Taxes for the Year 1959.

Table with columns: IN WHOSE NAME ASSESSED, TO WHOM TRANSFERRED, DESCRIPTION OF PROPERTY, TRUE AND FULL VALUATIONS, ASSESSED VALUATIONS, VALUATIONS BY SCHOOL DISTRICTS AS EQUALIZED BY DEPARTMENT OF TAXATION, SOLD FOR TAXES, SPECIAL TAXES, TOTAL TAXES, PAID, WHEN PAID, Number of Receipt, March Settlement 1960, June Settlement 1960, November Settlement 1960, Collections to First Monday in January 1961, Delinquent on First Monday in January 1961, Total Delinquent Tax and Penalty, REMARKS.

14-2-31
Cass County, Minnesota
Shungabe Island
Cass County Point
Kobeoka Springs
Cass County Point
Add'n to June Parcel

Covert Lot 8 Sec 5-141-31

5th Lake

50
both side swings to RR on
both sides of RR on
a cut



CARTWAY

6th Lake

SCALE ONE INCH = 100 FEET

Part of Outlet A - not shown on map.

Outlet A

Assessment Roll and Tax List of Real Property in the Town of Shingler

Form 501 MILLER-DAVIS CO., MINNEAPOLIS

Indicate Type of Property: R-Residential, C-Commercial, I-Industrial, U-Utility, F-Farm, L-Lakeshore, T-Timber, M-Mineral

Table with columns: IN WHOSE NAME ASSESSED, TO WHOM TRANSFERRED, DESCRIPTION OF PROPERTY, TRUE AND FULL VALUATIONS, ASSESSED VALUATIONS, and FINAL EQUALIZED VALUE. Includes entries for U.S. of America, State of Minnesota, Benjamin Walker Zint, W.J. Benzkofer, and Edward S. Olson.

Cass County, Minnesota, for Taxes for the Year 1959.

Table with columns: SOLD FOR TAXES, VALUATIONS BY SCHOOL DISTRICTS AS EQUALIZED BY DEPARTMENT OF TAXATION, SPECIAL TAXES, TOTAL TAXES, PAID, WHEN PAID, Number of Receipt, March Settlement, June Settlement, November Settlement, Collections to First Monday in January 1961, Delinquent on First Monday in January 1961, Total Delinquent Tax and Penalty, and REMARKS. Includes handwritten entries for 1959 and 1960 tax payments.

Assessment Roll and Tax List of Real Property in the Town of Shingler, Cass County, Minnesota, for Taxes for the Year 1959.

Cass County, Minnesota, for Taxes for the Year 1959.

Table with columns: IN WHOSE NAME ASSESSED, TO WHOM TRANSFERRED, DESCRIPTION OF PROPERTY, TRUE AND FULL VALUATIONS, ASSESSED VALUATIONS, VALUATIONS BY SCHOOL DISTRICTS AS EQUALIZED BY DEPARTMENT OF TAXATION, TAXES, PAID, WHEN PAID, Number of Receipt, March Settlement 1960, June Settlement 1960, Penalty Settlement 1960, Collections to First Monday in January 1961, Delinquent on First Monday in January 1961, Total Delinquent Tax and Penalty, REMARKS.

U. S. of America
U. S. of America
U. S. of America
State of Minnesota
U. S. of America
State of Minnesota
U. S. of America
U. S. of America
Frank & Eva Mae Bain
U. S. of America
Robert W. & Charles A. Robinson
Frederick A. & Harold W. Jorgensen
State of Minnesota
U. S. of America
State of Minnesota
State of Minnesota

12448
H 490
683
1173

H 130
H 50
H 310
257
284
142
H 490
683
1173
33158
424
33582
34781
7801

3674
1414
16078
8028
4014
12104
11637
9755
3366

3674
1414
16188
8204
4102
3674
707
8094
8204
4102

PAID IN FULL MAY 23 1960
2nd HALF PAID AUG 15 1960
1st HALF PAID MAY 20 1960
2nd HALF PAID MAY 23 1960
PAID IN FULL MAY 10 1960
PAID IN FULL MAY 10 1960

10235
10236
10162
11

Sturtevant Beach
Ingoboe Island
Chippewa Point
Kabepona Springs
Ojibway
Ingoboe Beach

Assessment Roll and Tax List of Real Property in the Town of Shingabe, Cass County, Minnesota, for Taxes for the Year 1959.

Form 30D

Indicate Type of Property: R-Residential, C-Commercial, I-Industrial, U-Utility, F-Farm, L-Lakeshore, T-Timber, M-Mineral

Main table with columns: IN WHOSE NAME ASSESSED, TO WHOM TRANSFERRED, DESCRIPTION OF PROPERTY, TRUE AND FULL VALUATIONS, ASSESSED VALUATIONS, VALUATIONS BY SCHOOL DISTRICTS AS EQUALIZED BY DEPARTMENT OF TAXATION, SOLD FOR TAXES, PAID, WHEN PAID, Number of Receipt, March Settlement 1960, June Settlement 1960, November Settlement 1960, Penalty, Collections to First Monday in January 1961, Delinquent on First Monday in January 1961, Total Delinquent Tax and Penalty, REMARKS.

Handwritten entries: Nels A. Olson (lots 1-10), U. S. of America (lots 11-15), Basil Shofner (lots 16-20).

Handwritten notes: 2nd HALF PAID OCT 4 1960, 1st HALF PAID MAY 1 1960, 14788, 3570, 3454, 3454.

Vertical text on the right edge: 1-2-31, Sunrise Beach, Shingabe Island, Chisago Point, Kabeona Springs, Otter Creek, June Beach, Add'n to

Assessment Roll and Tax List of Real Property in the Town of Shingabe, Cass County, Minnesota, for Taxes for the Year 1959.

Form 501 MILLER-DAVIS CO., MINNEAPOLIS

* Indicate Type of Property: R-Residential, C-Commercial, U-Industrial, U-Utility, F-Farm, L-Lakeshore, T-Timber, M-Mineral

Table with columns: IN WHOM NAME ASSESSED, TO WHOM TRANSFERRED, DESCRIPTION OF PROPERTY, TRUE AND FULL VALUATIONS, ASSESSED VALUATIONS, VALUATIONS BY SCHOOL DISTRICTS AS EQUALIZED BY DEPARTMENT OF TAXATION, SOLD FOR TAXES, PAID, WHEN PAID, Number of Receipt, March Settlement 1960, June Settlement 1960, Penalty, November Settlement 1960, Penalty, Collections to First Monday in January 1961, Penalty, Delinquent on First Monday in January 1961, Total Delinquent Tax and Penalty, REMARKS.

Shingabe Island, Onnawa Point, Kabecon Springs, Qitwa, Wnee Beach, Add'n to Wnee Beach

Assessment Roll and Tax List of Real Property in the Town of Shingle Creek, Cass County, Minnesota, for Taxes for the Year 1959.

Form 502 MILLER-DAVIS CO., MINNEAPOLIS. * Indicate Type of Property: R-Residential, C-Commercial, I-Industrial, U-Utility, F-Farm, L-Lakeshore, T-Timber, M-Mineral

Table with columns: IN WHOSE NAME ASSESSED, TO WHOM TRANSFERRED, SUBDIVISION, TRUE AND FULL VALUATIONS, ASSESSED VALUATIONS, and FINAL EQUALIZED VALUE. Includes handwritten entries for various lots and owners like Marion H. & Miriam E. Perry.

(Cont on next page)

all that portion of E. 40 rods of West Lot 4 - etc.

Table with columns: VALUATIONS BY SCHOOL DISTRICTS AS EQUALIZED BY DEPARTMENT OF TAXATION, TAXES, PAID, WHEN PAID, and REMARKS. Includes handwritten entries for tax payments and dates.

Vertical text on the right edge of the page, including '1-2-31' and 'Sunrise Beach'.

Assessment Roll and Tax List of Real Property in the Town of Shingler, Minnesota

Form 503 MILLER-DAVIS CO., MINNEAPOLIS

Indicate Type of Property: R-Residential, C-Commercial, I-Industrial, U-Utility, F-Farm, L-Lakeshore, T-Timber, M-Mineral

Table with columns: IN WHOSE NAME ASSESSED, TO WHOM TRANSFERRED, DESCRIPTION OF PROPERTY, TRUE AND FULL VALUATIONS, ASSESSED VALUATIONS, and FINAL EQUALIZED VALUE. Includes handwritten entries for various property owners like H. J. & Dorothy Mantz, James C. & Virginia M. Edlerstrom, etc.

Handwritten note: (Condon next page)

Cass County, Minnesota, for Taxes for the Year 1959.

Table with columns: SOLD FOR TAXES, VALUATIONS BY SCHOOL DISTRICTS AS EQUALIZED BY DEPARTMENT OF TAXATION, TAX INCLUDING STATE HOMESTEAD, SPECIAL TAXES, TOTAL TAXES, PAID, WHEN PAID, Number of Receipt, March Settlement 1960, June Settlement 1960, Penalty, November Settlement 1960, Penalty, Collections to First Monday in January 1961, Penalty, Delinquent on First Monday in January 1961, Total Delinquent Tax and Penalty, REMARKS. Includes handwritten entries for various property owners and tax amounts.

Vertical text on the right edge of the page: 142-31, Sunnyside Beach, Moose Island, Chisago Point, KS, Faskonsa Springs, Ojibway James Beach, Addn to

Assessment Roll and Tax List of Real Property in the Town of Shingee, Cass County, Minnesota, for Taxes for the Year 1959.

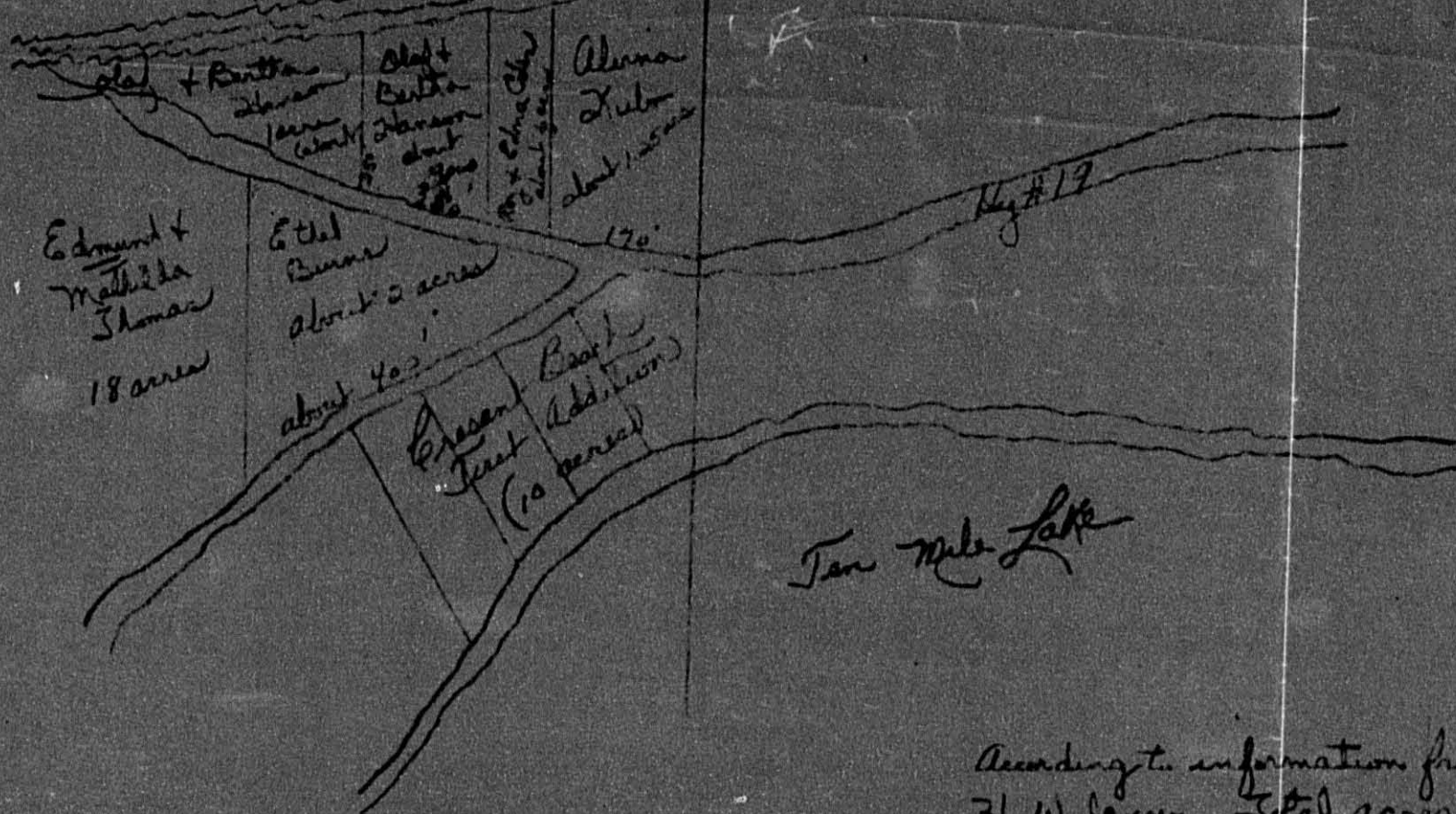
Cass County, Minnesota, for Taxes for the Year 1959.

Table with columns: IN WHOSE NAME ASSESSED, TO WHOM TRANSFERRED, DESCRIPTION OF PROPERTY, TRUE AND FULL VALUATIONS, ASSESSED VALUATIONS, VALUATIONS BY SCHOOL DISTRICTS AS EQUALIZED BY DEPARTMENT OF TAXATION, TAX, SPECIAL TAXES, TOTAL TAXES, PAID, WHEN PAID, Number of Receipt, March Settlement 1960, June Settlement 1960, November Settlement 1960, Collections to First Monday in January 1961, Delinquent on First Monday in January 1961, Total Delinquent Tax and Penalty, REMARKS.

Shingobee
1957

Portage Lake

Sec 26
Sec 35



Tan Mile Lake

According to information from
31 W Jensen. Total acreage
of Lot 3 - Sec 26 is 33.75 acres

Assessment Roll and Tax List of Real Property in the Town of Shingobe, Cass County, Minnesota, for Taxes for the Year 1959.

Form 500 UNIFORM COUNTY, MINNESOTA. Indicate Type of Property: R-Residential, C-Commercial, I-Industrial, U-Utility, F-Farm, L-Lakeshore, T-Timber, M-Mineral

Table with columns: IN WHOSE NAME ASSESSED, TO WHOM TRANSFERRED, DESCRIPTION OF PROPERTY, TRUE AND FULL VALUATIONS (RURAL, ALL OTHER), ASSESSED VALUATIONS, and FINAL EQUALIZED VALUE.

Table with columns: SOLD FOR TAXES, VALUATIONS BY SCHOOL DISTRICTS AS EQUALIZED BY DEPARTMENT OF TAXATION, Tax including State Homestead, State Tax on Non-Homestead, SPECIAL TAXES, TOTAL TAXES, PAID, WHEN PAID, Number of Receipt, March Settlement 1960, June Settlement 1960, November Settlement 1960, Collections to First Monday in January 1961, Delinquent on First Monday in January 1961, Total Delinquent Tax and Penalty, REMARKS.

Edith B. Burns, Approx. E 400' of that part of Sect 26 lying between Crescent Beach 26 141 31 2

Oluf & Bertha Hansen, All that part of Sect 26 lying N. of Hwy # 19 & W. of Bjorklund track

Handwritten entries in the tax table including: # 142, 4014, 4014, 33, 932, 20, 4966, 4966, 4990, 496, 11793, 11801.

14-2-31, Sunrise Beach, Goose Island, Chisago Point, Kabeena Springs, Otterway, James Beach, Add'n to

Assessment Roll and Tax List of Real Property in the Town of Shungobe

Indicate Type of Property: R-Residential, C-Commercial, I-Industrial, U-Utility, F-Farm, L-Lakeshore, T-Timber, M-Mineral

Form 500 MILLER-DAVIS CO., MINNEAPOLIS

Table with columns: IN WHOSE NAME ASSESSED, TO WHOM TRANSFERRED, DESCRIPTION OF PROPERTY, TRUE AND FULL VALUATIONS, ASSESSED VALUATIONS, FINAL EQUALIZED VALUE.

Cass County, Minnesota, for Taxes for the Year 1959.

Table with columns: SOLD FOR TAXES, VALUATIONS BY SCHOOL DISTRICTS AS EQUALIZED BY DEPARTMENT OF TAXATION, Tax including State Homestead, State Tax on Non-Homestead, SPECIAL TAXES, TOTAL TAXES, PAID, WHEN PAID, Number of Receipt, March Settlement 1960, June Settlement 1960, Penalty, November Settlement 1960, Collections to First Monday in January 1961, Delinquent on First Monday in January 1961, Total Delinquent Tax and Penalty, REMARKS.

Shungobe Beach, Shungobe Island, Chitawa Point, Kaberona Springs, Chitawa June Beach

Assessment Roll and Tax List of Real Property in the Town of Shungate, Cass County, Minnesota, for Taxes for the Year 1959.

Form 503 MILLER-DAVIS CO., MINNEAPOLIS

Indicate Type of Property: R-Residential, C-Commercial, I-Industrial, U-Utility, F-Farm, L-Lakeshore, T-Timber, M-Mineral

Table with columns: IN WHOSE NAME ASSESSED, TO WHOM TRANSFERRED, DESCRIPTION OF PROPERTY, TRUE AND FULL VALUATIONS, ASSESSED VALUATIONS, and FINAL EQUALIZED VALUE.

196 33

Cass County, Minnesota, for Taxes for the Year 1959.

Table with columns: VALUATIONS BY SCHOOL DISTRICTS AS EQUALIZED BY DEPARTMENT OF TAXATION, TAXES, PAID, WHEN PAID, Number of Receipt, March Settlement, June Settlement, November Settlement, Penalty, Collections to First Monday in January 1961, Delinquent on First Monday in January 1961, Total Delinquent Tax and Penalty, and REMARKS.

Handwritten calculations: 508, 2247, 2755

778 76 13 98

792 74

379 31

269 57

110 24

336 8

Vertical text on the right edge: Sun-lase Beach, ngobee Island, Cutwape Point, Kabeona Springs, Cutwape June Beach, Add'n to

Assessment Roll and Tax List of Real Property in the Town of *Langolia*, Cass County, Minnesota, for Taxes for the Year 1959.

Form 502 MILLER-DAVIS CO., MINNEAPOLIS

* Indicate Type of Property: R-Residential, C-Commercial, I-Industrial, U-Utility, F-Farm, L-Lakeshore, T-Timber, M-Mineral

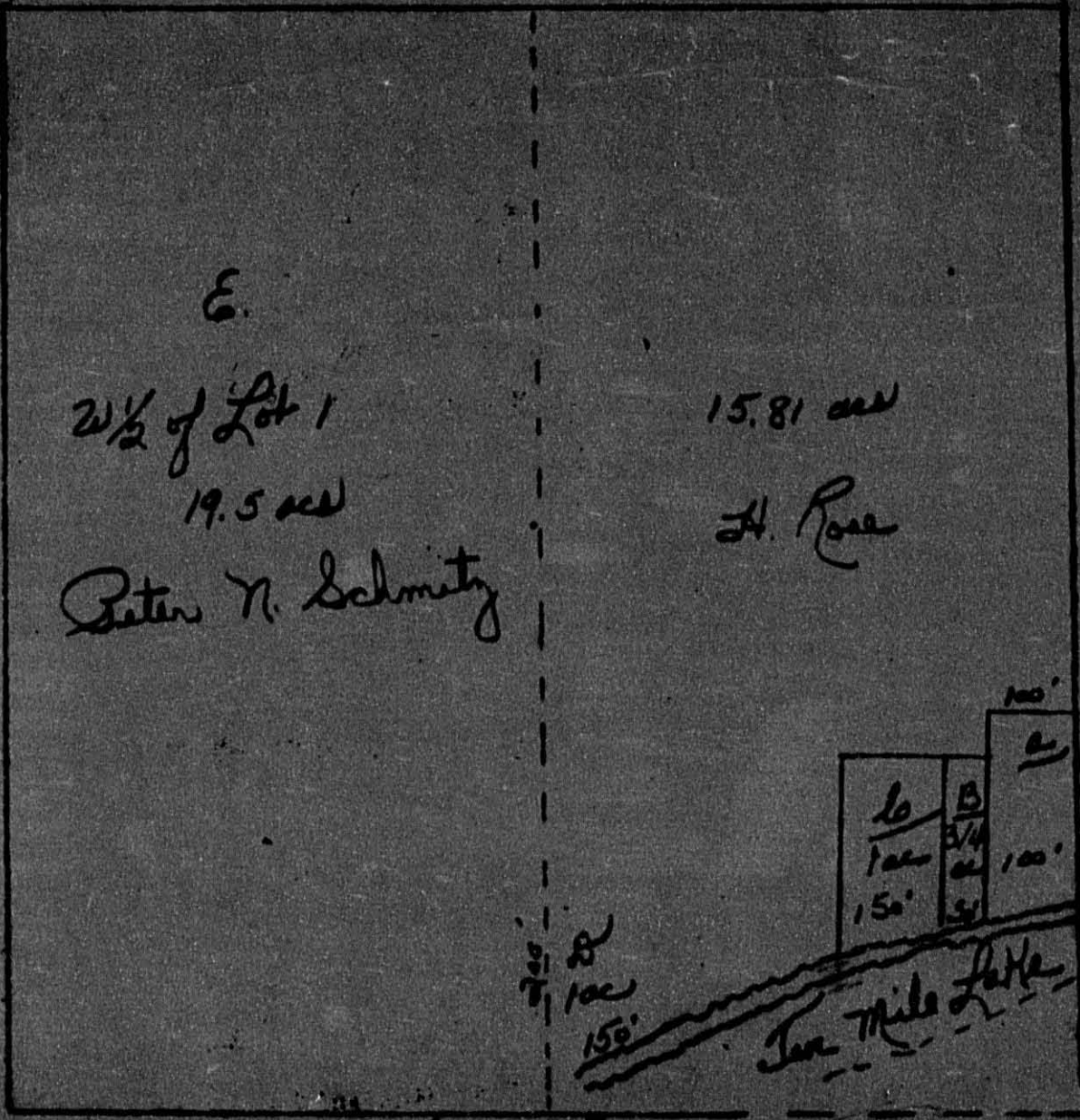
Table with columns: IN WHOSE NAME ASSESSED, TO WHOM TRANSFERRED, DESCRIPTION OF PROPERTY, TRUE AND FULL VALUATIONS, ASSESSED VALUATIONS, and FINAL EQUALIZED VALUE. Includes handwritten entries for lots 1-20 and names like John E. Blomquist.

Cass County, Minnesota, for Taxes for the Year 1959.

Table with columns: VALUATIONS BY SCHOOL DISTRICTS AS EQUALIZED BY DEPARTMENT OF TAXATION, TAXES, PAID, WHEN PAID, and REMARKS. Includes handwritten entries for lots 18, 19, and 20 with tax amounts and dates.

Vertical text on the right edge of the page: Otterbein Beach, ngobee Island, Chitauque Point, Kaberona Springs, Otterway, June Beach, t Adlin to

Amberg
1957



- A. J Kolderie
- B. "
- B. Elmer Nordland
- D. Henry Rose
- E. Peter Schmitz

Except for distance
 given this map is not
 exact as we don't
 have the distances of
 lake

Lot 1 Sec 34-14-31

Assessment Roll and Tax List of Real Property in the Town of Shingle

Cass County, Minnesota, for Taxes for the Year 1959.

Form 5010 (1958) MINN. STAT. ANN. § 263.01

* Indicate Type of Property: R-Residential, C-Commercial, I-Industrial, U-Utility, F-Farm, L-Lakeshore, T-Timber, M-Mineral

Table with columns: IN WHOSE NAME ASSESSED, TO WHOM TRANSFERRED, DESCRIPTION OF PROPERTY, TRUE AND FULL VALUATIONS, ASSESSED VALUATIONS, VALUATIONS BY SCHOOL DISTRICTS AS EQUALIZED BY DEPARTMENT OF TAXATION, TAXES, PAID, WHEN PAID, etc.

142-31
Surfside Beach
Ingoe Island
Crittensva Point
Kabeonsa Springs
Offway
Innee Beach
Add'n to

Assessment Roll and Tax List of Real Property in the Town of Shunglee

Indicate Type of Property: R-Residential, C-Commercial, I-Industrial, U-Utility, F-Farm, L-Lakeshore, T-Timber, M-Mineral

Form 502 MILLER-DAVIS CO., MINNEAPOLIS

Table with columns: IN WHOSE NAME ASSESSED, TO WHOM TRANSFERRED, DESCRIPTION OF PROPERTY, TRUE AND FULL VALUATIONS, ASSESSED VALUATIONS, FINAL EQUALIZED VALUE.

Cass County, Minnesota, for Taxes for the Year 1959.

Table with columns: SOLD FOR TAXES, VALUATIONS BY SCHOOL DISTRICTS AS EQUALIZED BY DEPARTMENT OF TAXATION, SPECIAL TAXES, TOTAL TAXES, PAID, WHEN PAID, Number of Receipt, March Settlement, June Settlement, November Settlement, Collections to First Monday in January 1961, Delinquent on First Monday in January 1961, Total Delinquent Tax and Penalty, REMARKS.

Assessment Roll and Tax List of Real Property in the Town of Shingle, Cass County, Minnesota, for Taxes for the Year 1959.

Form 302 (1958) MINN. STAT. ANN. § 261.01

* Indicate Type of Property: R-Residential, C-Commercial, I-Industrial, U-Utility, F-Farm, L-Lakeshore, T-Timber, M-Mineral

Table with columns: IN WHOSE NAME ASSESSED, TO WHOM TRANSFERRED, DESCRIPTION OF PROPERTY, TRUE AND FULL VALUATIONS, ASSESSED VALUATIONS, FINAL EQUALIZED VALUE.

Mary Louise Woodford
Margaret St. Wright
Leslie St. & Irene M. Gardner
State of Minnesota
Margaret St. Wright

John S. & Sophie Hanson
" " "
State of Minnesota
John S. & Sophie Hanson

Cass County, Minnesota, for Taxes for the Year 1959.

Table with columns: SOLD FOR TAXES, VALUATIONS BY SCHOOL DISTRICTS AS EQUALIZED BY DEPARTMENT OF TAXATION, SPECIAL TAXES, TOTAL TAXES, PAID, WHEN PAID, Number of Receipt, March Settlement, June Settlement, November Settlement, Collections to First Monday in January, Delinquent on First Monday in January, Total Delinquent Tax and Penalty, REMARKS.

Abate #7876
39
78
48
61

226
360 = 586
633 = 633
993 = 1219
5822
28068
33890

Sturtis Beach
Ingohee Island
Oatman's Point
Kabokona Springs
Oatway
Jumper Beach

Assessment Roll and Tax List of Real Property in the Town of Shingobee

Indicate Type of Property: R-Residential, C-Commercial, I-Industrial, U-Utility, F-Farm, L-Lakeshore, T-Timber, M-Mineral

Form SCD MILLER-DAVIS CO., MINNEAPOLIS

Table with columns: IN WHOSE NAME ASSESSED, TO WHOM TRANSFERRED, DESCRIPTION OF PROPERTY, TRUE AND FULL VALUATIONS, ASSESSED VALUATIONS, and FINAL EQUALIZED VALUE. Includes entries for Augusta F. & Peter E. Balusky, Werner M. & Margaret E. Backman, Horace D. Beagle, John Andrew, Jr., Bert E. & Beatrice Gardner, and The Hapison Lumber Co.

cont next page

9744

Cass County, Minnesota, for Taxes for the Year 1959.

Table with columns: VALUATIONS BY SCHOOL DISTRICTS AS EQUALIZED BY DEPARTMENT OF TAXATION, TAXES, PAID, WHEN PAID, and REMARKS. Includes handwritten entries for #249, #40, #25, #195, #175, #232, #576, #17, #601, #322, #249, #793, #1042, #427, #963, #1390, #2432, #26850, #39290, #66140, #1090, #67230, #30282, #31436, #5012.

Shingobee Beach, Shingobee Island, Chisholm Point, Kaskaska Springs, Otterway, James Beach, Add'n to

Assessment Roll and Tax List of Real Property in the Town of Shingobee, Minnesota

Form SCD HILLER-DAVIS CO., MINNEAPOLIS

Indicate Type of Property: R-Residential, C-Commercial, I-Industrial, U-Utility, F-Farm, L-Lakeshore, T-Timber, M-Mineral

Table with columns: IN WHOSE NAME ASSESSED, TO WHOM TRANSFERRED, DESCRIPTION OF PROPERTY, TRUE AND FULL VALUATIONS, ASSESSED VALUATIONS, and FINAL EQUALIZED VALUE. Includes handwritten entries for Ed. Wold, Kenneth Willard & Agnes Mc Auley, Theodore Norgard, Nels D. Olson, Max Mushatin, Edna Thue & Sigurd Edvard Thue, and Max H. & May M. Mushatin.

Cass County, Minnesota, for Taxes for the Year 1959.

Table with columns: SOLD FOR TAXES, VALUATIONS BY SCHOOL DISTRICTS AS EQUALIZED BY DEPARTMENT OF TAXATION, Tax including State Homestead, State Tax on Non-Homestead, SPECIAL TAXES, TOTAL TAXES, PAID, WHEN PAID, Number of Receipt, March Settlement 1960, June Settlement 1960, Penalty, November Settlement 1960, Penalty, Collections to First Monday in January 1961, Penalty, Delinquent on First Monday in January 1961, Total Delinquent Tax and Penalty, and REMARKS. Includes handwritten entries for H 481, H 210, H 40, H 60, H 399, H 25, H 20, H 1135, 180, 1235.

Vertical text on the right edge of the page: Sunrise Beach, Shingobee Island, Chippewa Point, Kabeokan Springs, Chippewa Beach, Add'n to June Beach.

Assessment Roll and Tax List of Real Property in the Town of Shingobee

Indicate Type of Property: R-Residential, C-Commercial, I-Industrial, U-Utility, F-Farm, L-Lakeshore, T-Timber, M-Mineral

Cass County, Minnesota, for Taxes for the Year 1959.

Table with columns: IN WHOSE NAME ASSESSED, TO WHOM TRANSFERRED, DESCRIPTION OF PROPERTY, TRUE AND FULL VALUATIONS, ASSESSED VALUATIONS, VALUATIONS BY SCHOOL DISTRICTS AS EQUALIZED BY DEPARTMENT OF TAXATION, TAXES, PAID, WHEN PAID, etc.

Assessment Roll and Tax List of Real Property in the Town of Shungique

Cass County, Minnesota, for Taxes for the Year 1959.

Table with columns: IN WHOSE NAME ASSESSED, TO WHOM TRANSFERRED, DESCRIPTION OF PROPERTY, TRUE AND FULL VALUATIONS, ASSESSED VALUATIONS, VALUATIONS BY SCHOOL DISTRICTS AS EQUALIZED BY DEPARTMENT OF TAXATION, SOLD FOR TAXES, PAID, WHEN PAID, March Settlement, June Settlement, November Settlement, Collections to First Monday in January 1961, Delinquent on First Monday in January 1961, Total Delinquent Tax and Penalty, REMARKS.

143
Surprise Beach
Ngosbe Island
Ojibwa Point
Kabecon Springs
Ojibwa June Beach
Add'n to

Assessment Roll and Tax List of Real Property in the Town of Shinglee

Cass County, Minnesota, for Taxes for the Year 1959.

Indicate Type of Property: R-Residential, C-Commercial, I-Industrial, U-Utility, F-Farm, L-Lakeshore, T-Timber, M-Mineral

Table with columns: IN WHOSE NAME ASSESSED, TO WHOM TRANSFERRED, DESCRIPTION OF PROPERTY, TRUE AND FULL VALUATIONS, ASSESSED VALUATIONS, VALUATIONS BY SCHOOL DISTRICTS AS EQUALIZED BY DEPARTMENT OF TAXATION, SOLD FOR TAXES, PAID, WHEN PAID, SPECIAL TAXES, TOTAL TAXES, MARCH SETTLEMENT 1960, JUNE SETTLEMENT 1960, PENALTY, NOVEMBER SETTLEMENT 1960, COLLECTIONS TO FIRST MONDAY IN JANUARY 1961, DELINQUENT ON FIRST MONDAY IN JANUARY 1961, TOTAL DELINQUENT TAX AND PENALTY, REMARKS.

142-3

Sumner Beach, Ingobee Island, Chippewa Point, Lakeona Springs, Qj1way, June Beach, Adria to

Assessment Roll and Tax List of Real Property in the Town of Shungobe

Indicate Type of Property: R-Residential, C-Commercial, I-Industrial, U-Utility, F-Farm, L-Lakeshore, T-Timber, M-Mineral

Form 5CD MILLER-DAVIS CO., MINNEAPOLIS

Table with columns: IN WHOSE NAME ASSESSED, TO WHOM TRANSFERRED, SUBDIVISION, TRUE AND FULL VALUATIONS, ASSESSED VALUATIONS, and FINAL EQUALIZED VALUE. Includes handwritten entries for property owners like John & Lilly Staff, Frank & Lois S. Orton, etc.

Cass County, Minnesota, for Taxes for the Year 1959.

Table with columns: VALUATIONS BY SCHOOL DISTRICTS AS EQUALIZED BY DEPARTMENT OF TAXATION, TAXES, PAID, WHEN PAID, and REMARKS. Includes handwritten entries for tax payments and dates.

Vertical text on the right edge of the page: Sturtevant Beach, Shungobe Island, Chisnoma Point, Kaberona Springs, Ojibway, June Beach, & Adlin to

Assessment Roll and Tax List of Real Property in the Town of Shungober

Indicate Type of Property: R-Residential, C-Commercial, I-Industrial, U-Utility, F-Farm, L-Lakeshore, T-Timber, M-Mineral

Cass County, Minnesota, for Taxes for the Year 1959.

Table with columns: IN WHOSE NAME ASSESSED, TO WHOM TRANSFERRED, DESCRIPTION OF PROPERTY, TRUE AND FULL VALUATIONS, ASSESSED VALUATIONS, VALUATIONS BY SCHOOL DISTRICTS AS EQUALIZED BY DEPARTMENT OF TAXATION, TAXES, PAID, WHEN PAID, Number of Receipt, March Settlement, June Settlement, November Settlement, Collections to First Monday in January 1961, Delinquent on First Monday in January 1961, Total Delinquent Tax and Penalty, REMARKS.

Vertical text on the right edge of the page: 143, Sunrise Beach, Ingobee Island, Chisnoma Point, Kabeirona Springs, Ojibway, June Beach, Adria to

Assessment Roll and Tax List of Real Property in the Town of Shungobe, Cass County, Minnesota, for Taxes for the Year 1959.

Form 502 MILLER-DAVIS CO., MINNEAPOLIS

* Indicate Type of Property: R-Residential, C-Commercial, I-Industrial, U-Utility, F-Farm, L-Lakeshore, T-Timber, M-Mineral

Table with columns: IN WHOSE NAME ASSESSED, TO WHOM TRANSFERRED, DESCRIPTION OF PROPERTY, TRUE AND FULL VALUATIONS, ASSESSED VALUATIONS, and FINAL EQUALIZED VALUE. Includes entries for Leonard A. Grueler, J. M. Deibel, Phillips J. Jewell, Robert & Helen Kadolph, Wiley J. & Gertrude A. Polter, Phillips Jewell, Phillips J. & Dorothy C. Jewell, and U. S. of America.

Cass County, Minnesota, for Taxes for the Year 1959.

Table with columns: VALUATIONS BY SCHOOL DISTRICTS AS EQUALIZED BY DEPARTMENT OF TAXATION, TAX INCLUDING STATE HOMESTEAD, SPECIAL TAXES, TOTAL TAXES, PAID, WHEN PAID, Number of Receipt, March Settlement 1960, June Settlement 1960, Penalty, November Settlement 1960, Collections to First Monday in January 1961, Delinquent on First Monday in January 1961, Total Delinquent Tax and Penalty, REMARKS. Includes handwritten notes like 'PAID IN FULL' and '2nd HALF PAID'.

Vertical text on the right edge of the page: Sunrise Beach, Shungobe Island, Onawa Point, Kabonka Springs, Onawa, Add'n to Sunrise Beach.

Assessment Roll and Tax List of Real Property in the Town of Shungobe, Cass County, Minnesota, for Taxes for the Year 1959.

Cass County, Minnesota, for Taxes for the Year 1959.

Table with columns for 'IN WHOSE NAME ASSESSED', 'TO WHOM TRANSFERRED', 'DESCRIPTION OF PROPERTY', 'TRUE AND FULL VALUATIONS', 'ASSESSED VALUATIONS', 'VALUATIONS BY SCHOOL DISTRICTS AS EQUALIZED BY DEPARTMENT OF TAXATION', and 'REMARKS'. Includes handwritten entries for Bert L. Johnson, R.E. & E.W. Stanley, and Beryl L. Warren.

Vertical text on the right edge of the page: 'Beach', 'Shungobe Island', 'Chimney Point', 'Kakoma Springs', 'Ojibway', 'Jamez Beach', 'Add'n to'.

Assessment Roll and Tax List of Real Property in the Town of Shingabe

Indicate Type of Property: R-Residential, C-Commercial, I-Industrial, U-Utility, F-Farm, L-Lakeshore, T-Timber, M-Mineral

Cass County, Minnesota, for Taxes for the Year 1959.

Table with columns: IN WHOSE NAME ASSESSED, TO WHOM TRANSFERRED, DESCRIPTION OF PROPERTY, TRUE AND FULL VALUATIONS, ASSESSED VALUATIONS, and FINAL EQUALIZED VALUE. Includes handwritten entries for Arthur A. Scharff Jr., Ann J. Muechel, Faye Cole Andrus, etc.

Table with columns: VALUATIONS BY SCHOOL DISTRICTS AS EQUALIZED BY DEPARTMENT OF TAXATION, SOLD FOR TAXES, SPECIAL TAXES, TOTAL TAXES, PAID, WHEN PAID, and REMARKS. Includes handwritten entries for tax amounts and payment dates.

Vertical text on the right edge of the page: Gated Beach, Shingabe Island, Oakdale Point, Kabeona Springs, Oldway, June Beach, Add'n to

Assessment Roll and Tax List of Real Property in the Town of Shungobe

Indicate Type of Property: R-Residential, C-Commercial, I-Industrial, U-Utility, F-Farm, L-Lakeshore, T-Timber, M-Mineral

Table with columns: IN WHOSE NAME ASSESSED, TO WHOM TRANSFERRED, DESCRIPTION OF PROPERTY, TRUE AND FULL VALUATIONS, ASSESSED VALUATIONS, and FINAL EQUALIZED VALUE.

Cass County, Minnesota, for Taxes for the Year 1959.

Table with columns: SOLD FOR TAXES, VALUATIONS BY SCHOOL DISTRICTS AS EQUALIZED BY DEPARTMENT OF TAXATION, SPECIAL TAXES, TOTAL TAXES, PAID, WHEN PAID, Number of Receipt, March Settlement 1960, June Settlement 1960, November Settlement 1960, Collections to First Monday in January 1961, Delinquent on First Monday in January 1961, Total Delinquent Tax and Penalty, and REMARKS.

(Continued on next page) Jacob Jennie ... Part of Lot 1

Vertical text on the right edge of the page: Add n to ...

Assessment Roll and Tax List of Real Property in the Town of Shingobee

Indicate Type of Property: R-Residential, C-Commercial, I-Industrial, U-Utility, F-Farm, L-Lakeshore, T-Timber, M-Mineral

Cass County, Minnesota, for Taxes for the Year 1959.

Form 30 MILLER-DAVIS CO., MINNEAPOLIS

IN WHOSE NAME ASSESSED	TO WHOM TRANSFERRED	DESCRIPTION OF PROPERTY				No. School District	Indicate Homestead Tax or No	Indicate Agricultural Tax or No	Indicate Type of Property	TRUE AND FULL VALUATIONS						Total Assessed Value as Equalized by the Board of Review	FINAL EQUALIZED VALUE		
		SUBDIVISION	Sec. or Lot	Town or Block	Reg.					Number of Acres of Land	Machinery Permanently Attached to Real Estate	RURAL			ALL OTHER				
												LAND Exclusive of Structures and Improvements	BUILDINGS and Other Structures	TOTAL True and Full Value	Homestead Up to \$4,000 20%			Over \$4,000 and Non-Homestead 33 1/3%	Timber Land Class 3e 20%
Werner M. Bachman & Marg. E. Bachman		Sunrise Beach	1			119	No	T											
"	"	Sec. 22-142-3'	2			"	"	"											
"	"		3			"	"	"											
"	"		4			"	"	"											
"	"		5			"	"	"											
"	"		6			"	"	"											
"	"		7			"	"	"											
"	"		8			"	"	"											
"	"		9			"	"	"											
"	"		10			"	"	"											
"	"		11			"	"	"											
"	"		12			"	"	R											
"	"		13			"	"	T											
"	"		14			"	"	"											
"	"		15			"	"	C											
"	"		16			"	"	T											
"	"		17			"	"	"											
"	"		18			"	"	"											
"	"		19			"	"	"											
"	"		20			"	"	"											

SOLD FOR TAXES	VALUATIONS BY SCHOOL DISTRICTS AS EQUALIZED BY DEPARTMENT OF TAXATION						Tax including State Homestead	State Tax on Non-Homestead	SPECIAL TAXES	TOTAL TAXES	PAID	WHEN PAID	Number of Receipt	March Settlement 1960	June Settlement 1960	November Settlement 1960	Penalty	Collections to First Monday in January 1961	Penalty	Delinquent on First Monday in January 1961	Total Delinquent Tax and Penalty	REMARKS
	District No.	District No.	District No.	District No.	District No.	District No.																
	Rate	Rate	Rate	Rate	Rate	Rate																
1						10	282	06		288	1	2nd HALF PAID AUG 15 1960										
2						10	282	06		288	2	1st HALF PAID JUL 22 1960										
3						10	282	06		288	3	2nd HALF PAID AUG 15 1960										
4						10	282	06		288	4	1st HALF PAID JUL 22 1960										
5						10	282	06		288	5	2nd HALF PAID AUG 15 1960										
6						10	282	06		288	6	1st HALF PAID JUL 22 1960										
7						10	282	06		288	7	2nd HALF PAID AUG 15 1960										
8						10	282	06		288	8	1st HALF PAID JUL 22 1960										
9						10	282	06		288	9	2nd HALF PAID AUG 15 1960										
10						10	282	06		288	10	1st HALF PAID JUL 22 1960										
11						10	282	06		288	11	2nd HALF PAID AUG 15 1960										
12						112	3166	70		3236	12	1st HALF PAID JUL 22 1960										
13						10	282	06		288	13	2nd HALF PAID AUG 15 1960										
14						10	282	06		288	14	1st HALF PAID JUL 22 1960										
15						183	5172	114		5286	15	2nd HALF PAID AUG 15 1960										
16						10	282	06		288	16	1st HALF PAID JUL 22 1960										
17						10	282	06		288	17	2nd HALF PAID AUG 15 1960										
18						10	282	06		288	18	1st HALF PAID JUL 22 1960										
19						10	282	06		288	19	2nd HALF PAID AUG 15 1960										
20											20	1st HALF PAID JUL 22 1960										

465 13132 286 13418 13418

141-31 142-31 Sunrise Beach

Shingobee Island, Carpentry Point, Kabecons Springs, Qittway, Sunrise Beach

Assessment Roll and Tax List of Real Property in the Town of Shingobee

Indicate Type of Property: R-Residential, C-Commercial, I-Industrial, U-Utility, F-Farm, L-Lakeshore, T-Timber, M-Mineral

Cass County, Minnesota, for Taxes for the Year 1959.

IN WHOSE NAME ASSESSED	TO WHOM TRANSFERRED	DESCRIPTION OF PROPERTY				TRUE AND FULL VALUATIONS											FINAL EQUALIZED VALUE	
		SUBDIVISION	Sec. of Lot	Town or Block	Number of Acres of Land	LAND Exclusive of Structures and Improvements	BUILDINGS and Other Structures	MACHINERY Permanently Attached to Real Estate	TOTAL True and Full Value	RURAL		ALL OTHER			MACHINERY Permanently Attached to Real Estate	TOTAL ASSESSED VALUE		Total Assessed Value as Equalized by the Board of Review
										Homestead Up to \$4,000 20%	Over \$4,000 and Non-Homestead 33 1/3 %	Timber Land Class 3e 20%	Homestead Up to \$4,000 25%	Over \$4,000 and Non-Homestead 40%				
Shingobee Island																		
1	1	21	1	119	Yes	No	L											
2	2	22	1	119	Yes	No	L											
3	3																	
4	4																	
5	5																	
6	6	Part of	1 2															
7	7	Bal of	1	119	Yes	No	L											
8	8		2															
9	9		3															
10	10		4															
11	11		5															
12	12																	
13	13																	
14	14																	
15	15																	
16	16		1 3															
17	17		2															
18	18		3															
19	19		4															
20	20		5															

SOLD FOR TAXES	VALUATIONS BY SCHOOL DISTRICTS AS EQUALIZED BY DEPARTMENT OF TAXATION						Tax including State Homestead	State Tax on Non-Homestead	SPECIAL TAXES	TOTAL TAXES	PAID	WHEN PAID	Number of Receipt	March Settlement 1960	June Settlement 1960	November Settlement 1960	Penalty	Collections to First Monday in January 1961	Penalty	Delinquent on First Monday in January 1961	Total Delinquent Tax and Penalty	REMARKS	
	District No.	District No.	District No.	District No.	District No.	District No.																	
	Rate	Rate	Rate	Rate	Rate	Rate																	
1																							
2																							
3																							
4																							
5																							
6																							
7																							
8																							
9																							
10																							
11																							
12																							
13																							
14																							
15																							
16																							
17																							
18																							
19																							
20																							

Gitches Gunne Beach
 Breezy Point
 Chippewa Point
 Kabeokron Springs
 Otterway Gunne Beach
 Add'n to

Assessment Roll and Tax List of Real Property in the Town of Shungolia, Cass County, Minnesota, for Taxes for the Year 1959.

Form 50 MILLER-DAVIS CO., MINNEAPOLIS. *Indicate Type of Property: R-Residential, C-Commercial, I-Industrial, U-Utility, F-Farm, L-Lakeshore, T-Timber, M-Mineral

Cass County, Minnesota, for Taxes for the Year 1959.

Table with columns: IN WHOSE NAME ASSESSED, TO WHOM TRANSFERRED, DESCRIPTION OF PROPERTY, TRUE AND FULL VALUATIONS (LAND, BUILDINGS, MACHINERY, TOTAL), ASSESSED VALUATIONS (RURAL, ALL OTHER), TOTAL ASSESSED VALUE, and FINAL EQUALIZED VALUE.

Table with columns: SOLD FOR TAXES, VALUATIONS BY SCHOOL DISTRICTS AS EQUALIZED BY DEPARTMENT OF TAXATION, Tax including State Homestead, State Tax on Non-Homestead, SPECIAL TAXES, TOTAL TAXES, PAID, WHEN PAID, Number of Receipt, March Settlement 1960, June Settlement 1960, November Settlement 1960, Collections to First Monday in January 1961, Delinquent on First Monday in January 1961, Total Delinquent Tax and Penalty, and REMARKS.

141-31, 142-31, Chipewew Point, Shingobee Island, Marse Beach

141-31, 142-31, Chipewew Point, Shingobee Island, Marse Beach, Kabeona Springs, Otterway, June Beach

Mary A. Ray, James N. & Madeline A. Livingston, A.M. Ashenbrenner, Henry and Margaret Bolner, Herbert & Elizabeth Dalzell, Grayson & Genevieve Fisher

900 added by J.B., 300 added by J.B.

Handwritten calculations: 4 726, 1258, 1984, 56082, 782, 56864, 38267, 18599

141-31, 142-31, Chipewew Point, Shingobee Island, Marse Beach, Kabeona Springs, Otterway, June Beach

Assessment Roll and Tax List of Real Property in the Town of Shungobee, Cass County, Minnesota, for Taxes for the Year 1959.

Form 50 - MILLER-DAVIS CO., MINNEAPOLIS

* Indicate Type of Property: R-Residential, C-Commercial, I-Industrial, U-Utility, F-Farm, L-Lakeshore, T-Timber, M-Mineral

Table with columns: IN WHOSE NAME ASSESSED, TO WHOM TRANSFERRED, SUBDIVISION, DESCRIPTION OF PROPERTY, TRUE AND FULL VALUATIONS, ASSESSED VALUATIONS, and FINAL EQUALIZED VALUE.

Cass County, Minnesota, for Taxes for the Year 1959.

Table with columns: SOLD FOR TAXES, VALUATIONS BY SCHOOL DISTRICTS AS EQUALIZED BY DEPARTMENT OF TAXATION, SPECIAL TAXES, TOTAL TAXES, PAID, WHEN PAID, and REMARKS.

Vertical text on the left edge of the page: 141-51, 142-31, Sunrise Beach, Shingobee Island, Chipewava Point, Wakokona Springs, Crescent Beach 1st, Ball's 1st Add'n to Gitchie Gunne Beach.

Vertical text on the right edge of the page: Gitchie Gunne Beach, Sunrise Island, Breezy Point, Crescent Beach 1st, Ball's 1st Add'n to Gitchie Gunne Beach.

Assessment Roll and Tax List of Real Property in the Town of Shungobe

Form 30 MILLER-DAVIS CO., MINNEAPOLIS

Indicate Type of Property: R-Residential, C-Commercial, I-Industrial, U-Utility, F-Farm, L-Lakeshore, T-Timber, M-Mineral

Table with columns: IN WHOSE NAME ASSESSED, TO WHOM TRANSFERRED, SUBDIVISION, DESCRIPTION OF PROPERTY, TRUE AND FULL VALUATIONS, ASSESSED VALUATIONS, FINAL EQUALIZED VALUE. Includes entries for Vern S. + Mae M. Christian, J. B. + Amanda Chumley, Albert + Selma M. Dalzell, Raymond + Josephine Adhikla, Lyle + Dorothy Goodburn, Joyce + Anna Goodburn, Dr. A. Aitken.

Vertical text on the left margin: Hills Addition to Gitchee Gumee Beach, Mabelona Springs, Chippewa Point, Breezy Point, Gitchee Gumee Beach.

Cass County, Minnesota, for Taxes for the Year 1959.

Table with columns: SOLD FOR TAXES, VALUATIONS BY SCHOOL DISTRICTS AS EQUALIZED BY DEPARTMENT OF TAXATION, Tax including State Homestead, State Tax on Non-Homestead, SPECIAL TAXES, TOTAL TAXES, PAID, WHEN PAID, Number of Receipt, March Settlement 1960, June Settlement 1960, November Settlement 1960, Collections to First Monday in January 1961, Delinquent on First Monday in January 1961, Total Delinquent Tax and Penalty, REMARKS. Includes entries for 1-20 with tax amounts and payment dates.

Vertical text on the right margin: Charlton Beach, Snicker's Add'n To Walker, Crescent Beach, Crescent Beach 1st Add'n, Ma Pa Ma Pa Day.

Assessment Roll and Tax List of Real Property in the Town of Shungoher, Cass County, Minnesota, for Taxes for the Year 1959.

Form 30 - MILLER-DAVIS CO., MINNEAPOLIS

Indicate Type of Property: R-Residential, C-Commercial, I-Industrial, U-Utility, F-Farm, L-Lakeshore, T-Timber, M-Mineral

Table with columns: IN WHOSE NAME ASSESSED, TO WHOM TRANSFERRED, SUBDIVISION (Wa Ba Na Ne Bay), DESCRIPTION OF PROPERTY, TRUE AND FULL VALUATIONS, ASSESSED VALUATIONS (RURAL, ALL OTHER), VALUATIONS BY SCHOOL DISTRICTS AS EQUALIZED BY DEPARTMENT OF TAXATION, SOLD FOR TAXES, PAID, WHEN PAID, Number of Receipt, March Settlement 1960, June Settlement 1960, November Settlement 1960, Collections to First Monday in January 1961, Delinquent on First Monday in January 1961, Total Delinquent Tax and Penalty, REMARKS.

Beach, Batches, Breezy Point, Crescent Beach, Beach List, Wa Ba Na Ne Bay

Charlton, Smokey's Addr, Balford's Addr, Park Point, Sunrise Heights

RKS

Assessment Roll and Tax List of Real Property in the Town of Shungobee

Form 50 - MILLER-DAVIS CO., MINNEAPOLIS

Indicate Type of Property: R-Residential, C-Commercial, I-Industrial, U-Utility, F-Farm, L-Lakeshore, T-Timber, M-Mineral

Cass County, Minnesota, for Taxes for the Year 1959.

Table with columns: IN WHOSE NAME ASSESSED, TO WHOM TRANSFERRED, SUBDIVISION, DESCRIPTION OF PROPERTY, TRUE AND FULL VALUATIONS, ASSESSED VALUATIONS, VALUATIONS BY SCHOOL DISTRICTS AS EQUALIZED BY DEPARTMENT OF TAXATION, TAX INCLUDING STATE HOMESTEAD, SPECIAL TAXES, TOTAL TAXES, PAID, WHEN PAID, Number of Receipt, March Settlement 1960, June Settlement 1960, Penalty, November Settlement 1960, Penalty, Collections to First Monday in January 1961, Penalty, Delinquent on First Monday in January 1961, Total Delinquent Tax and Penalty, REMARKS.

Handwritten names: A. N. Meland, George & Patricia Engberg, Helene Wise.

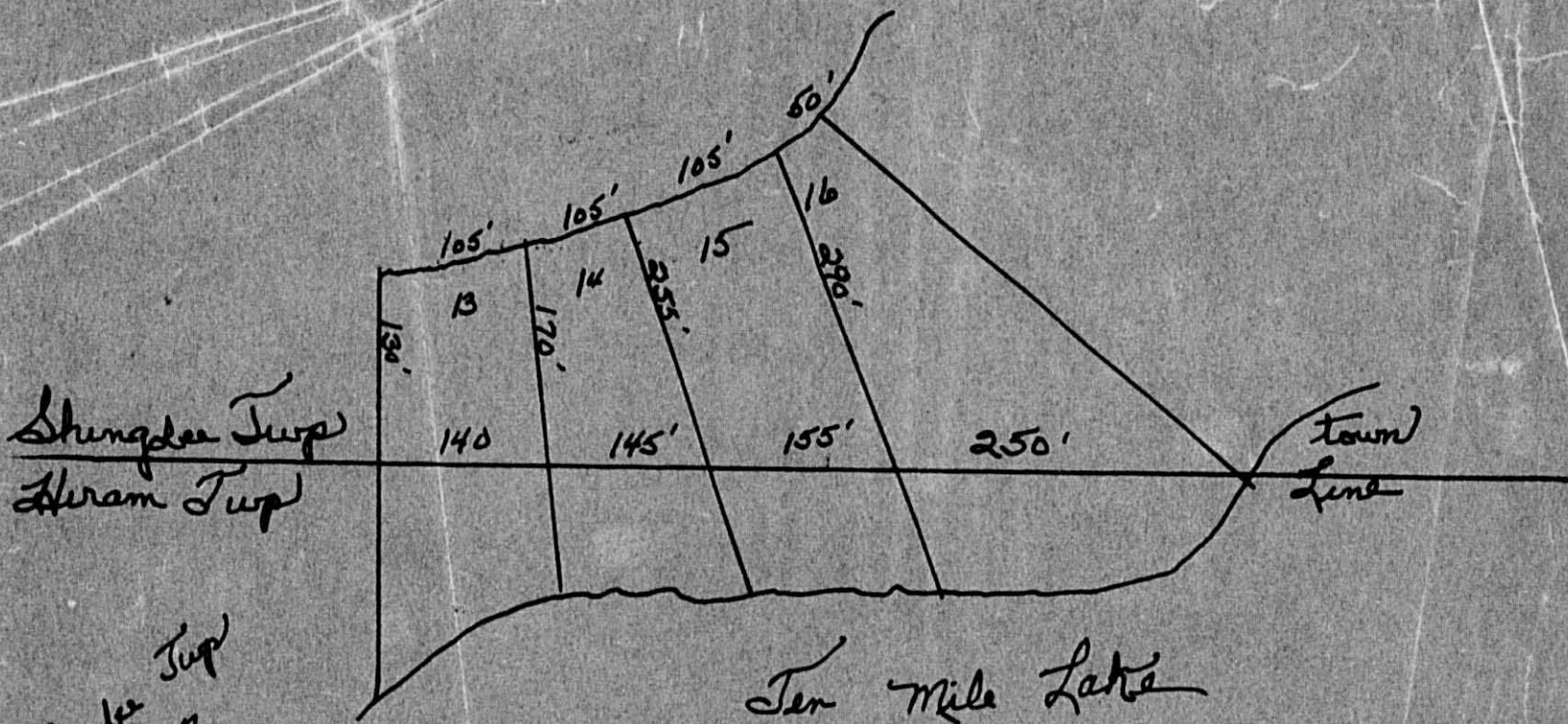
Handwritten: Sunrise Heights, 3 1/2 acs of Lot 1 W. of Hwy Sec 26-142.3

Handwritten: 10 less July 1/2

Handwritten: July 1/2

Handwritten: # 181, 270, 431, 12756, 1620, 12918, 5883, 4190, 2845

Vertical text on the right edge: Char... Beach, Breezy Point, Crescent Beach, Crescent Beach 1st Add'n, Sunrise Heights, Harson's Point, Shady Lane, RKS, Smokey's Add'n, No Walker, Bal... Ford's 1st Add'n, Park Point.



Shingler Twp
 Hiram Twp

Shingler Twp
 1957

Lots 13-14-15-16

Chariton Beach

Assessment Roll and Tax List of Real Property in the Town of Shingobee, Cass County, Minnesota, for Taxes for the Year 1959.

Form 50 MILLER-DAVIS CO., MINNEAPOLIS. * Indicate Type of Property: R-Residential, C-Commercial, I-Industrial, U-Utility, F-Farm, L-Lakeshore, T-Timber, M-Mineral

Table with columns: IN WHOSE NAME ASSESSED, TO WHOM TRANSFERRED, SUBDIVISION, Sec. of Lot, Town or Block, Rng., Number of Acres of Land, TRUE AND FULL VALUATIONS (LAND, BUILDINGS, MACHINERY, TOTAL), ASSESSED VALUATIONS (RURAL, ALL OTHER, MACHINERY, TOTAL ASSESSED VALUE), and FINAL EQUALIZED VALUE.

Cass County, Minnesota, for Taxes for the Year 1959.

Table with columns: SOLD FOR TAXES, VALUATIONS BY SCHOOL DISTRICTS AS EQUALIZED BY DEPARTMENT OF TAXATION, Tax including State Homestead, State Tax on Non-Homestead, SPECIAL TAXES, TOTAL TAXES, PAID, WHEN PAID, Number of Receipt, March Settlement 1960, June Settlement 1960, Penalty, November Settlement 1960, Collections to First Monday in January 1961, Delinquent on First Monday in January 1961, Total Delinquent Tax and Penalty, REMARKS.

Vertical text on the left edge: 142-31, Chariton Beach, Smokey's Add'n to Walker, Belford's 1st Add'n to Shingobee Is., Bolefor's 1st Add'n to Walker, Rescent Beach 1st Add'n, Sunrise Heights, Hills at ADA, Park Point, Hanson's Point, Shady Lane.

RKS

Assessment Roll and Tax List of Real Property in the Town of Shungbee, Cass County, Minnesota, for Taxes for the Year 1959.

Form 50 - MILLER-DAVIS CO., MINNEAPOLIS

Indicate Type of Property: R-Residential, C-Commercial, I-Industrial, U-Utility, F-Farm, L-Lakeshore, T-Timber, M-Mineral

Table with columns: IN WHOSE NAME ASSESSED, TO WHOM TRANSFERRED, SUBDIVISION, Sec. or Lot, Town or Block, Rng., Number of Acres of Land, No. School District, Indicate Homestead, Indicate Agricultural, Indicate Type of Property, TRUE AND FULL VALUATIONS (LAND, BUILDINGS, MACHINERY, TOTAL), ASSESSED VALUATIONS (RURAL, ALL OTHER, MACHINERY, TOTAL ASSESSED), Total Assessed Value as Equalized by the Board of Review, FINAL EQUALIZED VALUE.

Cass County, Minnesota, for Taxes for the Year 1959.

Table with columns: SOLD FOR TAXES, VALUATIONS BY SCHOOL DISTRICTS AS EQUALIZED BY DEPARTMENT OF TAXATION, Tax including State Homestead, State Tax on Non-Homestead, SPECIAL TAXES, TOTAL TAXES, PAID, WHEN PAID, Number of Receipt, March Settlement 1960, June Settlement 1960, Penalty, November Settlement 1960, Penalty, Collections to First Monday in January 1961, Penalty, Delinquent on First Monday in January 1961, Total Delinquent Tax and Penalty, REMARKS.

Vertical text on the left edge of the page: 142-31, Charlton Beach, Smokey's Add'n to Valuer, Teleford's 1st Add'n to Valuer, Park Point, Resoon, Sunrise Heights, Harson's Point, Shady Lane.

RKS

Harson's Point, Shady Lane

Assessment Roll and Tax List of Real Property in the Town of Shungobee

Indicate Type of Property: R-Residential, C-Commercial, I-Industrial, U-Utility, F-Farm, L-Lakeshore, T-Timber, M-Mineral

Cass County, Minnesota, for Taxes for the Year 1959.

Table with columns: IN WHOSE NAME ASSESSED, TO WHOM TRANSFERRED, SUBDIVISION (Park Point), DESCRIPTION OF PROPERTY, TRUE AND FULL VALUATIONS, ASSESSED VALUATIONS, VALUATIONS BY SCHOOL DISTRICTS AS EQUALIZED BY DEPARTMENT OF TAXATION, SOLD FOR TAXES, SPECIAL TAXES, TOTAL TAXES, PAID, WHEN PAID, Number of Receipt, March Settlement 1960, June Settlement 1960, November Settlement 1960, Collections to First Monday in January 1961, Delinquent on First Monday in January 1961, Total Delinquent Tax and Penalty, REMARKS.

Vertical text on the left margin: 142-51, Chariton Beach, Smoker's Add'n to Valuer, Teleford's 1st Add'n to Valuer, Park Point, Rescon, Sunrise Heights, Shady Lane

Vertical text on the right margin: RKS, Harson's Point, Shady Lane

Assessment Roll and Tax List of Real Property in the Town of Shinglee,

Indicate Type of Property: R-Residential, C-Commercial, I-Industrial, U-Utility, F-Farm, L-Lakeshore, T-Timber, M-Mineral

Cass County, Minnesota, for Taxes for the Year 1959.

IN WHOSE NAME ASSESSED	TO WHOM TRANSFERRED	DESCRIPTION OF PROPERTY				TRUE AND FULL VALUATIONS										FINAL EQUALIZED VALUE		
		SUBDIVISION	Sec. or Lot	Town or Block	Rug.	Number of Acres of Land	LAND Exclusive of Structures and Improvements	BUILDINGS and Other Structures	MACHINERY Permanently Attached to Real Estate	TOTAL True and Full Value	RURAL		ALL OTHER				TOTAL ASSESSED VALUE	Total Assessed Value as Equalized by the Board of Review
											Acres	100ths	Homestead Up to \$4,000 20%	Over \$4,000 and Non-Homestead 33 1/3%	Timber Land Class 3e 20%			
John S. & Sofie Hanson	Part of Lot 3, N. 158 of Lot 4 lying E. of N.P. Ry. 16-142-3	Hanson's Point	1															
"	"	"	2															
"	"	"	3															
"	"	"	4															
"	"	"	5															
Henry Van De Riet			6															
John S. & Sofie Hanson			7															
"	"	"	8															
"	"	"	9															
"	"	"	10															
"	"	"	11															
"	"	"	12															
			13															
			14															
			15															
			16															
			17															
			18															
			19															
			20															

SOLD FOR TAXES	VALUATIONS BY SCHOOL DISTRICTS AS EQUALIZED BY DEPARTMENT OF TAXATION						Tax including State Homestead	State Tax on Non-Homestead	SPECIAL TAXES	TOTAL TAXES	PAID	WHEN PAID	Number of Receipt	March Settlement 1960	June Settlement 1960	November Settlement 1960	Penalty	Collections to First Monday in January 1961	Penalty	Delinquent on First Monday in January 1961	Total Delinquent Tax and Penalty	REMARKS	
	District No.	District No.	District No.	District No.	District No.	District No.																	
	Rate	Rate	Rate	Rate	Rate	Rate																	
1																							
2																							
3																							
4																							
5																							
6																							
7																							
8																							
9																							
10																							
11																							
12																							
13																							
14																							
15																							
16																							
17																							
18																							
19																							
20																							

616 17412 376 17788 13459 4329

142-31 Chariton Beach Smokey's Add'n to Walker Selsford's 1st Add'n to Walker Shady Lane Park Point Hansen's Point Sunrise

Personal Shady Lane RKS

Assessment Roll and Tax List of Real Property in the Town of Shingobee

Form 3C - MILLER-DAVIS CO., MINNEAPOLIS. Indicate Type of Property: R-Residential, C-Commercial, I-Industrial, U-Utility, F-Farm, L-Lakeshore, T-Timber, M-Mineral

Cass County, Minnesota, for Taxes for the Year 1959.

Table with columns: IN WHOSE NAME ASSESSED, TO WHOM TRANSFERRED, DESCRIPTION OF PROPERTY, TRUE AND FULL VALUATIONS, ASSESSED VALUATIONS, VALUATIONS BY SCHOOL DISTRICTS AS EQUALIZED BY DEPARTMENT OF TAXATION, SOLD FOR TAXES, SPECIAL TAXES, TOTAL TAXES, PAID, WHEN PAID, Number of Receipt, March Settlement 1960, June Settlement 1960, November Settlement 1960, Collections to First Monday in January 1961, Delinquent on First Monday in January 1961, Total Delinquent Tax and Penalty, REMARKS.

180 5088 120 5208 3689 1085

Personal

