

Assessment & Tax List - 1958
Shingobee

SUMMARY OF TAX COLLECTION

Original Levy	- - - - -	\$ 43,674.20	
Additions	- - - - -	\$ 169.28	
			\$ 43,843.48
Abatements	- - - - -	\$ 427.30	
			\$ 43,416.18

COLLECTIONS

March Settlement	- - - - -	\$ 843.38	
June Settlement	- - - - -	\$ 22642.07	
November Settlement	- - - - -	\$ 10,252.22	
January Settlement	- - - - -	\$ 2,021.86	\$ 41,240.53
			\$
Over Collected	- - - - -	\$ 38.48	
Under Collected	- - - - -	\$	
Delinquent	- - - - -	\$ 2214.13	\$ 2175.65
Total	- - - - -		\$ 43,416.18

Real Estate
 Be I
 On Home Point
 Kabokona Springs
 10th Ave
 1st Add'n to
 Gunee Beach

TABULAR SCHEDULE OF VALUATIONS,

LEVIED IN THE Town OF Shingobee

School District No.	VALUATION BY SCHOOL DISTRICTS				RATE OF STATE TAXES		RATE OF COUNTY TAXES										RATE OF TOWN TAXES										RATE OF SCHOOL TAXES											
	Agricultural Lands	Non-Agricultural Lands	Personal Property	Total Value of all Property except Money and Credits	Total Rate of State Tax	Total Rate of County Tax	Rev.	R. & B.	Welfare	Bonds and Int.	Rt. B. Fed. Prog.	PERA	Total Rate of County Tax	Rev.	R. & B.	Drag Tax	State Loan	Fire Phone Com.	Total Rate of Town Tax	Local	Special	State Loan	Deficiency	Tuition	Transportation	C.O.	Def.											
119	27,924	110,847	3452 25644	167867	5.90	29.54	15.	57.68	-	5.	2.45	109.17	2.	9.	1.		2.5	2.5	1.	18.	1.	25.	40.51	1.45	23.47	10.52	101.95	235.02	126.95	260.02	40.51	1.45	23.47	10.52	101.95	235.02	126.95	260.02
					N.H. 6.52 12.42		Co. Nurse 2. Rt. B. Bldg. 2. Agric. Assn. 15																															
Assessed Value	Rural	All Other	Personal Property	Total																																		
Homestead	39,092	4358		43,450																																		
Non-Homestead	86,243	9078	29,096	124,417																																		
Total	125,335	13,436	29,096	167,867																																		

RATES AND TAXES

COUNTY OF CASS, STATE OF MINNESOTA

SCHOOL TAXES										LOCAL 1 MILL AND SPECIAL SCHOOL TAXES BY DISTRICTS										ALL OTHER TAXES									
Total Rate of Sch'l Tax	Total Rate of all Taxes	Local 1 Mill	Special	State Loan	Def. Transp.	Tuition	C.O.	Def.	Other	FUNDS	Rate	Amounts																	
101.95	235.02	3138	78440	127104	4550	73639	33007	319878		State - Non-Homestead		81132																	
126.95	260.02	13649	682425	552905	19791	320334	143588	1732692		State - Homestead		99029																	
		16787	760865	680009	24341	393973	176595	2052570		County Revenue,		498869																	
										County Road and Bridge,		251800																	
										County Welfare,		867514																	
										Bonds and Interest PERA		57914																	
										Co. Nurse		33573																	
										Rt. B. Fed. Prog.		83924																	
										Town Revenue,		33563																	
										County Road and Bridge,		151070																	
										Town Welfare,		16786																	
										Town Drag,		41962																	
										Town State Loan,		41962																	
										Fire Phone Cemetery		16786																	
										School Local 1 Mill,		307129																	
										School Special,		16787																	
										School State Loan,		760865																	
										Deficiency		680009																	
										Tuition		24341																	
										Transportation		393973																	
										C.O.		176595																	
										Rt. B.		2052570																	
												43,674.20																	

County: Rt. B. Bldg. 33573
Agric. Assn. 83924
18,325.60

Total Number of Acres 11,663.04
 State of Minnesota, ss.
 COUNTY OF CASS
 I, L. C. Peterson, Auditor of said County and State aforesaid, do hereby certify that the foregoing is a true and correct Schedule, showing the valuation of all the taxable property, in the Town of Shingobee, in said County, the several rates of Taxation and Totals of the several Tax Funds levied thereon, for the year A. D. 1958.
 Witness my hand and official seal, this 7th day of January, A. D. 1959.
L. C. Peterson County Auditor
 By Helon Billen Deputy

Total Taxes Real Estate 36005.54
 Pers. Prop. 7668.66
 Total 43,674.20

SEAL

COLLECTIONS OF TAXES OF 1959 OF CASS COUNTY, MINNESOTA

FUNDS	MARCH SETTLEMENT 1959	JUNE SETTLEMENT 1959	NOV. SETTLEMENT 1959	Amount Collected from Nov. 1958 to First Monday in Jan. 1959	REDUCTIONS	Total Reductions and Collected	BALANCE UNCOLLECTED	ADDITIONS	Total Uncollected to First Monday in January, 1959
State-Non-Homestead,	177.51	434.81	177.47	168					
State-Homestead,	182.81	512.40	233.95	477					
Ag. Assoc.	15.49	43.42	19.83	40					
County Revenue,	915.30	2565.49	1171.36	23.89					
County Road and Bridge,	464.78	1302.72	594.80	12.13					
County Welfare,	1601.32	4488.31	2049.28	41.80					
County Bond and Interest, P.E.R.G.	106.90	299.62	136.80	2.79					
R. + B. Fed. Proj.	154.94	434.24	198.27	4.04					
Co. Nurse	61.97	173.70	79.31	1.63					
R. + B. Bldg.	61.97	173.70	79.31	1.63					
Town Revenue,	61.97	173.70	79.31	1.62					
Town Road and Bridge,	278.86	781.63	356.88	7.28					
Town Drug,	30.99	86.85	39.66	.82					
Town State Loan, Fire	77.46	217.12	99.13	2.02					
Phone	77.46	217.12	99.13	2.02					
Cemetery	30.99	86.84	39.65	.80					
School Local 1 Mill,	30.98	86.85	39.66	.81					
School Special,	1458.33	3967.93	1746.76	31.30					
School State Loan,									
Deficiency	1255.22	3518.21	1606.36	32.76					
Tuition									
Transportation	44.92	125.94	57.49	1.17					
C.O.	727.23	2038.32	930.66	18.99					
B. + Int.	325.98	913.64	417.15	8.51					
	8143.38	22642.07	10252.22	202.86					

	SCHOOL DISTRICT NO.	LOCAL 1 MILL	SPECIAL	STATE LOAN	Deficiency	Transp.	C.O.	B. + Int.	TOTALS
MARCH SETTLEMENT	School District No. 119-a	3.64	90.94		147.36	5.27	85.37	38.27	370.85
	119-na	27.34	1367.39		1107.86	39.65	641.56	287.71	3471.81
	Totals	30.98	1458.33		1255.22	44.92	727.23	325.98	3842.66
JUNE SETTLEMENT	School District No. 119-a	14.98	374.47		606.79	21.73	351.55	157.58	1527.10
	119-na	91.87	3593.46		2911.42	104.21	1686.77	756.06	9123.79
	Totals	86.85	3967.93		3518.21	125.94	2038.32	913.64	10650.89
NOVEMBER SETTLEMENT	School District No. 119a	9.44	235.91		382.27	13.68	221.47	99.27	962.04
	119na	30.22	1510.85		1224.09	43.81	709.19	317.88	3836.04
	Totals	39.66	1746.76		1606.36	57.49	930.66	417.15	4798.08
NOVEMBER to JANUARY	School District No. 119a	37	915		1482	53	859	385	3731
	119na	44	2215		1774	64	1040	466	5623
	Totals	81	3130		3276	117	1899	851	9354
ADDITIONS	School District No.								
	Totals								
REDUCTIONS	School District No.								
	Totals								

Real Estate
 Point
 Kabekone Springs
 Highway
 Add'n to
 Gunne Beach

Assessment Roll and Tax List of Real Property in the Town of Shingobe

Indicate Type of Property: R-Residential, C-Commercial, I-Industrial, U-Utility, F-Farm, L-Lakeshore, T-Timber, M-Mineral

Cass County, Minnesota, for Taxes for the Year 1958.

Table with columns: IN WHOSE NAME ASSESSED, TO WHOM TRANSFERRED, DESCRIPTION OF PROPERTY, TRUE AND FULL VALUATIONS, ASSESSED VALUATIONS, VALUATIONS BY SCHOOL DISTRICTS AS EQUALIZED BY DEPARTMENT OF TAXATION, TAXES, PAID, WHEN PAID, Number of Receipt, March Settlement 1959, June Settlement 1959, Penalty, November Settlement 1959, Penalty, Collections to First Monday in January 1960, Penalty, Delinquent on First Monday in January 1960, Total Delinquent Tax and Penalty, REMARKS.

Assessment Roll and Tax List of Real Property in the Town of Shungate

Indicate Type of Property: R-Residential, C-Commercial, I-Industrial, U-Utility, F-Farm, L-Lakeshore, T-Timber, M-Mineral

Cass County, Minnesota, for Taxes for the Year 1958.

Table with columns: IN WHOSE NAME ASSESSED, TO WHOM TRANSFERRED, DESCRIPTION OF PROPERTY, TRUE AND FULL VALUATIONS, ASSESSED VALUATIONS, VALUATIONS BY SCHOOL DISTRICTS AS EQUALIZED BY DEPARTMENT OF TAXATION, TAXES, PAID, WHEN PAID, SPECIAL TAXES, TOTAL TAXES, REMARKS. Includes handwritten entries for names like Walter L. Berglund, Ralph H. Lower, Simon Tanner, Harry Reddock, W. H. Mallory, John D. Laffin, Adge + Rose L. Borer, Henry Heathman, Jack + Shirley West, Richard C. + Hazel West, Ralph + Julie Turner, Mike Welch, Arthur Stede, and Craig + Vera Larson.

Assessment Roll and Tax List of Real Property in the Town of Shingabe

Indicate Type of Property: R-Residential, C-Commercial, I-Industrial, U-Utility, F-Farm, L-Lakeshore, T-Timber, M-Mineral

Cass County, Minnesota, for Taxes for the Year 1958.

Table with columns: IN WHOSE NAME ASSESSED, TO WHOM TRANSFERRED, DESCRIPTION OF PROPERTY, TRUE AND FULL VALUATIONS, ASSESSED VALUATIONS, VALUATIONS BY SCHOOL DISTRICTS AS EQUALIZED BY DEPARTMENT OF TAXATION, SOLD FOR TAXES, SPECIAL TAXES, TOTAL TAXES, PAID, WHEN PAID, Number of Receipt, March Settlement 1959, June Settlement 1959, Penalty, November Settlement 1959, Penalty, Collections to First Monday in January 1960, Penalty, Delinquent on First Monday in January 1960, Total Delinquent Tax and Penalty, REMARKS.

Assessment Roll and Tax List of Real Property in the Town of Shingobee

* Indicate Type of Property: R-Residential, C-Commercial, I-Industrial, U-Utility, F-Farm, L-Lakeshore, T-Timber, M-Mineral

Cass County, Minnesota, for Taxes for the Year 1958.

Table with multiple columns: IN WHOSE NAME ASSESSED, TO WHOM TRANSFERRED, DESCRIPTION OF PROPERTY (Subdivision, Acres, etc.), TRUE AND FULL VALUATIONS (RURAL, ALL OTHER, etc.), ASSESSED VALUATIONS, VALUATIONS BY SCHOOL DISTRICTS AS EQUALIZED BY DEPARTMENT OF TAXATION (District, Rate, etc.), SOLD FOR TAXES, PAID, WHEN PAID, SPECIAL TAXES, TOTAL TAXES, and REMARKS. Includes handwritten entries for Evan H. Peterson, Harold D. & Grace Jesse, Florence & Ray Lewis, Ethel L. Peterson & Helen Olson, and J. B. & Evelyn Beckley.

Assessment Roll and Tax List of Real Property in the Town of Sheringabe

Cass County, Minnesota, for Taxes for the Year 1958.

Form SCD 1958-59-60, MINNAPOLIS, MINN. * Indicate Type of Property: R-Residential, C-Commercial, I-Industrial, U-Utility, F-Farm, L-Lakeshore, T-Timber, M-Mineral

Table with columns: IN WHOSE NAME ASSESSED, TO WHOM TRANSFERRED, DESCRIPTION OF PROPERTY, TRUE AND FULL VALUATIONS, ASSESSED VALUATIONS, VALUATIONS BY SCHOOL DISTRICTS AS EQUALIZED BY DEPARTMENT OF TAXATION, SOLD FOR TAXES, SPECIAL TAXES, TOTAL TAXES, PAID, WHEN PAID, Number of Receipt, March Settlement 1959, June Settlement 1959, November Settlement 1959, Collections to First Monday in January 1960, Delinquent on First Monday in January 1960, Total Delinquent Tax and Penalty, REMARKS.

Assessment Roll and Tax List of Real Property in the Town of Shingler

Indicate Type of Property: R-Residential, C-Commercial, I-Industrial, U-Utility, F-Farm, L-Lakeshore, T-Timber, M-Mineral

Cass County, Minnesota, for Taxes for the Year 1958.

Table with columns: IN WHOSE NAME ASSESSED, TO WHOM TRANSFERRED, DESCRIPTION OF PROPERTY, TRUE AND FULL VALUATIONS, ASSESSED VALUATIONS, VALUATIONS BY SCHOOL DISTRICTS AS EQUALIZED BY DEPARTMENT OF TAXATION, SOLD FOR TAXES, PAID, WHEN PAID, Number of Receipt, March Settlement 1959, June Settlement 1959, November Settlement 1959, Collections to First Monday in January 1960, Delinquent on First Monday in January 1960, Total Delinquent Tax and Penalty, REMARKS.

Govt Lot 8 Sec 5-141-31

5th Lake

So apt owns to RP on
both sides of
Cartway
has a creek
on the side



SCALE ONE INCH = 100 FEET

Part of Outlet A - not shown on map

Assessment Roll and Tax List of Real Property in the Town of Shingler

* Indicate Type of Property: R-Residential, C-Commercial, I-Industrial, U-Utility, F-Farm, L-Lakeshore, T-Timber, M-Mineral

Cass County, Minnesota, for Taxes for the Year 1958.

Table with columns: IN WHOSE NAME ASSESSED, TO WHOM TRANSFERRED, DESCRIPTION OF PROPERTY, TRUE AND FULL VALUATIONS, ASSESSED VALUATIONS, VALUATIONS BY SCHOOL DISTRICTS AS EQUALIZED BY DEPARTMENT OF TAXATION, TAXES, PAID, WHEN PAID, SPECIAL TAXES, TOTAL TAXES, MARCH SETTLEMENT, JUNE SETTLEMENT, PENALTY, NOVEMBER SETTLEMENT, COLLECTIONS TO FIRST MONDAY IN JANUARY 1960, DELINQUENT TAX AND PENALTY, REMARKS.

Assessment Roll and Tax List of Real Property in the Town of Shergrove

Indicate Type of Property: R-Residential, C-Commercial, I-Industrial, U-Utility, F-Farm, L-Lakeshore, T-Timber, M-Mineral

Cass County, Minnesota, for Taxes for the Year 1958.

Main table with columns for description of property, valuations, taxes by school districts, and payment status. Includes handwritten entries for James McDonald and William Johnson.

Real Estate

Ship Island Chipewa Point Kabekona Springs Highway 1st Addition to Gunter Beach

Assessment Roll and Tax List of Real Property in the Town of Shingabe

Indicate Type of Property: R-Residential, C-Commercial, I-Industrial, U-Utility, F-Farm, L-Lakeshore, T-Timber, M-Mineral

Form 500 ILLINOIS STATE BOARD OF EQUALIZATION

Table with columns: WHOSE NAME ASSESSED, TO WHOM TRANSFERRED, SUBDIVISION, TRUE AND FULL VALUATIONS (LAND, BUILDINGS, MACHINERY, TOTAL), ASSESSED VALUATIONS (RURAL, ALL OTHER, MACHINERY), TOTAL ASSESSED VALUE, FINAL EQUALIZED VALUE.

Cass County, Minnesota, for Taxes for the Year 1958.

Table with columns: SOLD FOR TAXES, VALUATIONS BY SCHOOL DISTRICTS AS EQUALIZED BY DEPARTMENT OF TAXATION, SPECIAL TAXES, TOTAL TAXES, PAID, WHEN PAID, Number of Receipt, March Settlement 1959, June Settlement 1959, November Settlement 1959, Collections to First Monday in January 1960, Delinquent on First Monday in January 1960, Total Delinquent Tax and Penalty, REMARKS.

Assessment Roll and Tax List of Real Property in the Town of Shingler, Cass County, Minnesota, for Taxes for the Year 1958.

Cass County, Minnesota, for Taxes for the Year 1958.

Table with columns for IN WHOSE NAME ASSESSED, TO WHOM TRANSFERRED, DESCRIPTION OF PROPERTY, TRUE AND FULL VALUATIONS, ASSESSED VALUATIONS, VALUATIONS BY SCHOOL DISTRICTS AS EQUALIZED BY DEPARTMENT OF TAXATION, SOLD FOR TAXES, PAID, WHEN PAID, Number of Receipt, March Settlement 1959, June Settlement 1959, November Settlement 1959, Collections to First Monday in January 1960, Delinquent on First Monday in January 1960, Total Delinquent Tax and Penalty, REMARKS.

Assessment Roll and Tax List of Real Property in the Town of Shungiku

* Indicate Type of Property: R-Residential, C-Commercial, I-Industrial, U-Utility, F-Farm, L-Lakeshore, T-Timber, M-Mineral

Cass County, Minnesota, for Taxes for the Year 1958.

Table with columns: IN WHOSE NAME ASSESSED, TO WHOM TRANSFERRED, DESCRIPTION OF PROPERTY, TRUE AND FULL VALUATIONS, ASSESSED VALUATIONS, VALUATIONS BY SCHOOL DISTRICTS AS EQUALIZED BY DEPARTMENT OF TAXATION, SOLD FOR TAXES, SPECIAL TAXES, TOTAL TAXES, PAID, WHEN PAID, Number of Receipt, March Settlement 1959, June Settlement 1959, Penalty, November Settlement 1959, Penalty, Collections to First Monday in January 1960, Penalty, Delinquent on First Monday in January 1960, Total Delinquent Tax and Penalty, REMARKS.

Assessment Roll and Tax List of Real Property in the Town of Shingabe

Cass County, Minnesota, for Taxes for the Year 1958.

Indicate Type of Property: R-Residential, C-Commercial, I-Industrial, U-Utility, F-Farm, L-Lakeshore, T-Timber, M-Mineral

Table with columns: IN WHOSE NAME ASSESSED, TO WHOM TRANSFERRED, DESCRIPTION OF PROPERTY, TRUE AND FULL VALUATIONS, ASSESSED VALUATIONS, VALUATIONS BY SCHOOL DISTRICTS AS EQUALIZED BY DEPARTMENT OF TAXATION, TAXES, PAID, WHEN PAID, SPECIAL TAXES, TOTAL TAXES, and REMARKS.

Assessment Roll and Tax List of Real Property in the Town of Shinglee

Cass County, Minnesota, for Taxes for the Year 1958.

* Indicate Type of Property: R-Residential, C-Commercial, I-Industrial, U-Utility, F-Farm, L-Lakeshore, T-Timber, M-Mineral

Table with columns: IN WHOSE NAME ASSESSED, TO WHOM TRANSFERRED, DESCRIPTION OF PROPERTY, TRUE AND FULL VALUATIONS, ASSESSED VALUATIONS, VALUATIONS BY SCHOOL DISTRICTS AS EQUALIZED BY DEPARTMENT OF TAXATION, TAXES, PAID, WHEN PAID, REMARKS.

Edna G. Becker
Howard Conn.
Mrs Bernard Eckman
Ada E. & Franky Bernard J. Eckman
Basel Cunningham & Lucille Bayula
Ada E. & Franky Bernard J. Eckman
A. N. Everhart.
Martin A. & Margorie Lehman
" " "
" " "
Lawrence J. Tittel & int.
Edman & Helen S. Eason, & int each
Basel Cunningham & Lucille Bayula
Martin A. & Margaret Lehman
Lawrence J. Tittel & int.
Edman & Helen S. Eason, & int each.
Martin A. & Margaret Lehman
Howard Conn

REMARKS
winters paid in full
16495
10193
10193
5624
10194
22.22 Abated 10195
3444
10195
10194
22.22
2566
22.22

Chippewa Point
Kabeokna Springs
1st Add'n to
Quana Beach

Assessment Roll and Tax List of Real Property in the Town of Shungbee

Cass County, Minnesota, for Taxes for the Year 1958.

Indicate Type of Property: R-Residential, C-Commercial, I-Industrial, U-Utility, F-Farm, L-Lakeshore, T-Timber, M-Mineral

Table with columns: IN WHOSE NAME ASSESSED, TO WHOM TRANSFERRED, DESCRIPTION OF PROPERTY, TRUE AND FULL VALUATIONS, ASSESSED VALUATIONS, VALUATIONS BY SCHOOL DISTRICTS AS EQUALIZED BY DEPARTMENT OF TAXATION, TAXES, PAID, WHEN PAID, Number of Receipt, March Settlement 1959, June Settlement 1959, Penalty, November Settlement 1959, Penalty, Collections to First Monday in January 1960, Penalty, Delinquent on First Monday in January 1960, Total Delinquent Tax and Penalty, REMARKS.

Assessment Roll and Tax List of Real Property in the Town of Shinglee

Cass County, Minnesota, for Taxes for the Year 1958.

* Indicate Type of Property: R-Residential, C-Commercial, I-Industrial, U-Utility, F-Farm, L-Lakeshore, T-Timber, M-Mineral

IN WHOSE NAME ASSESSED	TO WHOM TRANSFERRED	DESCRIPTION OF PROPERTY				No. School District	Indicate Homestead Yes or No	Indicate Agricultural Property Yes or No	Indicate Type of Property	TRUE AND FULL VALUATIONS				ASSESSED VALUATIONS							FINAL EQUALIZED VALUE		
		SUBDIVISION	Sec. or Lot	Town or Block	Rng.					Number of Acres of Land Acres 100ths	LAND Exclusive of Structures and Improvements	BUILDINGS and Other Structures	MACHINERY Permanently Attached to Real Estate	TOTAL True and Full Value	RURAL		ALL OTHER			MACHINERY Permanently Attached to Real Estate		TOTAL ASSESSED VALUE	Total Assessed Value as Equalized by the Board of Review
															Homestead Up to \$4,000 20%	Over \$4,000 and Non-Homestead 33 1/8%	Timber Land Class 3e 20%	Homestead Up to \$4,000 25%	Over \$4,000 and Non-Homestead 40%				
State of Minnesota Wheeler Lumber Bridge & Supply Co.		NE 1/4 of NE 1/4 Lot 2	14	14	31																		
U. S. of America		NW 1/4 of NE 1/4 Lot 3			37 83						300				100				100				
U. S. of America		SW 1/4 of NE 1/4																					
U. S. of America		SE 1/4 of NE 1/4																					
U. S. of America		Lot 1																					
U. S. of America		NE 1/4 of NW 1/4																					
U. S. of America		NW 1/4 of NW 1/4																					
U. S. of America		SW 1/4 of NW 1/4																					
U. S. of America		SE 1/4 of NW 1/4																					
U. S. of America		NE 1/4 of SW 1/4																					
U. S. of America		NW 1/4 of SW 1/4																					
U. S. of America		SW 1/4 of SW 1/4																					
U. S. of America		SE 1/4 of SW 1/4																					
U. S. of America		NE 1/4 of SE 1/4																					
U. S. of America		NW 1/4 of SE 1/4																					
U. S. of America		SW 1/4 of SE 1/4																					
U. S. of America		SE 1/4 of SE 1/4																					
					37 83					300					100				100				

SOLD FOR TAXES	VALUATIONS BY SCHOOL DISTRICTS AS EQUALIZED BY DEPARTMENT OF TAXATION						Tax including State Homestead	State Tax on Non-Homestead	SPECIAL TAXES	TOTAL TAXES	PAID	WHEN PAID	Number of Receipt	March Settlement 1959	June Settlement 1959	Penalty Settlement 1959	Collections to First Monday in January 1960	Penalty	Delinquent on First Monday in January 1960	Total Delinquent Tax and Penalty	REMARKS
	District No.	District No.	District No.	District No. 117	District No.	District No.															
	Rate	Rate	Rate	Rate	Rate	Rate															
	Mills	Mills	Mills	Mills	Mills	Mills															
1																					
2									100	2350	66	2416								2416x2658	6051
10																					
20									100	2350	66	2416									2416

17
 Chipewa Point
 Kabokona Springs
 Offway
 Gumbe Beach

Assessment Roll and Tax List of Real Property in the Town of Shingler

Cass County, Minnesota, for Taxes for the Year 1958.

Form SCD

* Indicate Type of Property: R-Residential, C-Commercial, I-Industrial, U-Utility, F-Farm, L-Lakeshore, T-Timber, M-Mineral

Table with columns: IN WHOSE NAME ASSESSED, TO WHOM TRANSFERRED, DESCRIPTION OF PROPERTY, TRUE AND FULL VALUATIONS, ASSESSED VALUATIONS, VALUATIONS BY SCHOOL DISTRICTS AS EQUALIZED BY DEPARTMENT OF TAXATION, SOLD FOR TAXES, PAID, WHEN PAID, Number of Receipt, March Settlement, June Settlement, November Settlement, Collections to First Monday in January, Delinquent on First Monday in January, Total Delinquent Tax and Penalty, REMARKS.

Orvel A. + Edna M. Mortensen

State of Minnesota 2 acre of SE 1/4 of NE 1/4

PAID IN FULL MAY 29 1958 14694

Map 31, Chippewa Point, Kabecon Springs, 1st Add'n to Gunne Beach

Assessment Roll and Tax List of Real Property in the Town of Shingobe

Indicate Type of Property: R-Residential, C-Commercial, I-Industrial, U-Utility, F-Farm, L-Lakeshore, T-Timber, M-Mineral

Cass County, Minnesota, for Taxes for the Year 1958.

Form SCD-116-5-58 MINNAPL

Table with columns: IN WHOSE NAME ASSESSED, TO WHOM TRANSFERRED, DESCRIPTION OF PROPERTY, TRUE AND FULL VALUATIONS, ASSESSED VALUATIONS, VALUATIONS BY SCHOOL DISTRICTS AS EQUALIZED BY DEPARTMENT OF TAXATION, SOLD FOR TAXES, SPECIAL TAXES, TOTAL TAXES, PAID, WHEN PAID, Number of Receipt, March Settlement 1959, June Settlement 1959, Penalty, November Settlement 1959, Penalty, Collections to First Monday in January 1960, Penalty, Delinquent on First Monday in January 1960, Total Delinquent Tax and Penalty, REMARKS.

Table with 20 rows of data. Row 1: State of Minnesota, 161431, NE 1/4 of NE 1/4, Rural valuation \$4,000, assessed \$800, school district 1, taxes \$1.00. Rows 2-20: Similar entries for various sections (NW 1/4, SW 1/4, SE 1/4) of NE 1/4.

Shingobe Island, Chipmunk Point, Kabokoma Springs, Lake Superior, Gumbe Beach

* Indicate Type of Property: R-Residential, C-Commercial, I-Industrial, U-Utility, F-Farm, L-Lakeshore, T-Timber, M-Mineral

Form 50D

IN WHOSE NAME ASSESSED	TO WHOM TRANSFERRED	DESCRIPTION OF PROPERTY				No. School District	TRUE AND FULL VALUATIONS								Total Assessed Value as Equalized by the Board of Review	FINAL EQUALIZED VALUE	SOLD FOR TAXES	VALUATIONS BY SCHOOL DISTRICTS AS EQUALIZED BY DEPARTMENT OF TAXATION						SPECIAL TAXES	TOTAL TAXES	PAID	WHEN PAID	Number of Receipt	March Settlement 1959	June Settlement 1959	November Settlement 1959	Penalty	Collections to First Monday in January 1960	Penalty	Delinquent on First Monday in January 1960	Total Delinquent Tax and Penalty	REMARKS													
		SUBDIVISION	Sec. of Lot	Town or Block	Rng.		Number of Acres of Land	LAND Exclusive of Structures and Improvements	BUILDINGS and Other Structures	MACHINERY Permanently Attached to Real Estate	TOTAL True and Full Value	RURAL		ALL OTHER				MACHINERY Permanently Attached to Real Estate	TOTAL ASSESSED VALUE	District No.	District No.	District No.	District No.															District No.	District No.	Tax including State Homestead	State Tax on Non-Homestead	Month	Day	Year	\$	cts.	\$	cts.	\$	cts.
U. S. of America		N 1/4 of N 1/4	17	14	31																																													
U. S. of America		N 1/4 of N 1/4	17	14	31																																													
U. S. of America		S 1/2 of N 1/4																																																
U. S. of America		S 1/2 of N 1/4																																																
U. S. of America		N 1/4 of N 1/4																																																
U. S. of America		N 1/4 of N 1/4																																																
U. S. of America		S 1/2 of N 1/4																																																
U. S. of America		S 1/2 of N 1/4																																																
U. S. of America		N 1/4 of S 1/2																																																
U. S. of America		N 1/4 of S 1/2																																																
U. S. of America		S 1/2 of S 1/2																																																
U. S. of America		S 1/2 of S 1/2																																																
U. S. of America		N 1/4 of S 1/2																																																
U. S. of America		N 1/4 of S 1/2																																																
State of Minnesota		S 1/2 of S 1/2																																																
U. S. of America		S 1/2 of S 1/2																																																

Maple Island, Chipewagon Point, Kabokona Springs, La-101 way, at Add'n to Gunne Beach

Assessment Roll and Tax List of Real Property in the Town of Shingobee of Shingobee County, Minnesota

Form 500-1-58 MINN. STATE DEPT. OF REVENUE

* Indicate Type of Property: R-Residential, C-Commercial, I-Industrial, U-Utility, F-Farm, L-Lakeshore, T-Timber, M-Mineral

Cass County, Minnesota, for Taxes for the Year 1958.

IN WHOSE NAME ASSESSED	TO WHOM TRANSFERRED	DESCRIPTION OF PROPERTY					No. School District	Indicate Homestead Tax or No	Indicate Agricultural Tax or No	Indicate Type of Property	TRUE AND FULL VALUATIONS				ASSESSED VALUATIONS						FINAL EQUALIZED VALUE		
		SUBDIVISION	Sec. or Lot	Town or Block	Reg.	Number of Acres of Land					LAND Exclusive of Structures and Improvements	BUILDINGS and Other Structures	MACHINERY Permanently Attached to Real Estate	TOTAL True and Full Value	RURAL		ALL OTHER		MACHINERY Permanently Attached to Real Estate	TOTAL ASSESSED VALUE		Total Assessed Value as Equalized by the Board of Review	
															Homestead Up to \$4,000	Over \$4,000 and Non-Homestead	Timber Land Class 3c	Homestead Up to \$4,000					Over \$4,000 and Non-Homestead
															20%	33 1/8%	20%	25%					40%
State of Minnesota		1	NE 1/4 of NE 1/4		20 141 31																		
U. S. of America		2	NW 1/4 of NE 1/4																				
U. S. of America		3	SW 1/4 of NE 1/4																				
State of Minnesota		4	SE 1/4 of NE 1/4																				
		5																					
U. S. of America		6	NE 1/4 of NW 1/4																				
U. S. of America		7	NW 1/4 of NW 1/4																				
U. S. of America		8	SW 1/4 of NW 1/4																				
U. S. of America		9	SE 1/4 of NW 1/4																				
		10																					
U. S. of America		11	NE 1/4 of SW 1/4																				
U. S. of America		12	NW 1/4 of SW 1/4																				
State of Minnesota		13	SW 1/4 of SW 1/4																				
U. S. of America		14	SE 1/4 of SW 1/4																				
		15																					
State of Minnesota		16	NE 1/4 of SE 1/4																				
U. S. of America		17	NW 1/4 of SE 1/4																				
U. S. of America		18	SW 1/4 of SE 1/4																				
Margaret Ruth Mc Fadden		19	SE 1/4 of SE 1/4		40				240				240		80		80						
		20			40				240				240		80		80						

SOLD FOR TAXES	VALUATIONS BY SCHOOL DISTRICTS AS EQUALIZED BY DEPARTMENT OF TAXATION						Tax including State Homestead	State Tax on Non-Homestead	SPECIAL TAXES	TOTAL TAXES	PAID	WHEN PAID	Number of Receipt	March Settlement 1959	June Settlement 1959	November Settlement 1959	Penalty	Collections to First Monday in January 1960	Penalty	Delinquent on First Monday in January 1960	Total Delinquent Tax and Penalty	REMARKS
	District No.	District No.	District No.	District No.	District No.	District No.																
	Rate	Rate	Rate	Rate	Rate	Rate																
	Mills	Mills	Mills	Mills	Mills	Mills																
1																						
2																						
3																						
4																						
5																						
6																						
7																						
8																						
9																						
10																						
11																						
12																						
13																						
14																						
15																						
16																						
17																						
18																						
19											80	1880	52	1932								
20											80	1880	52	1932								

PAID IN FULL MAY 4 1959 5978

13353

112-31
John Island
Chilipewa Point
Kabeokra Springs
14-10172
St. Adria to
Gunne Beach

Assessment Roll and Tax List of Real Property in the Town of Shingabe

Form SCD WILLIS-DEWEY COMPANY, MINNEAPOLIS

Indicate Type of Property: R-Residential, C-Commercial, I-Industrial, U-Utility, F-Farm, L-Lakeshore, T-Timber, M-Mineral

Cass County, Minnesota, for Taxes for the Year 1958.

Table with columns: IN WHOSE NAME ASSESSED, TO WHOM TRANSFERRED, DESCRIPTION OF PROPERTY, TRUE AND FULL VALUATIONS, ASSESSED VALUATIONS, VALUATIONS BY SCHOOL DISTRICTS AS EQUALIZED BY DEPARTMENT OF TAXATION, SOLD FOR TAXES, SPECIAL TAXES, TOTAL TAXES, PAID, WHEN PAID, Number of Receipt, March Settlement 1959, June Settlement 1959, November Settlement 1959, Collections to First Monday in January 1960, Delinquent on First Monday in January 1960, Total Delinquent Tax and Penalty, REMARKS.

Nels D. Olson
1 N E 1/4 of N E 1/4
2 N W 1/4 of N E 1/4
3 S W 1/4 of N E 1/4
4 S E 1/4 of N E 1/4
5
6 N E 1/4 of N W 1/4
7 N W 1/4 of N W 1/4
8 S W 1/4 of N W 1/4
9 S E 1/4 of N W 1/4

U. S. of America
11 N E 1/4 of S W 1/4
12 N W 1/4 of S W 1/4
13 S W 1/4 of S W 1/4
14 S E 1/4 of S W 1/4

Basil Shifner
State of Minnesota (cont Basil Shifner)
16 N E 1/4 of S E 1/4
17 N W 1/4 of S E 1/4
18 S W 1/4 of S E 1/4
19 S E 1/4 of S E 1/4

Basil Shifner
20

11-2-31
Chippewa Point
Kapekoma Springs
1015 Hwy
1st Addn to
Gumee Beach

Assessment Roll and Tax List of Real Property in the Town of Shinglee, Cass County, Minnesota, for Taxes for the Year 1958.

Cass County, Minnesota, for Taxes for the Year 1958.

Table with columns: IN WHOSE NAME ASSESSED, TO WHOM TRANSFERRED, DESCRIPTION OF PROPERTY, TRUE AND FULL VALUATIONS, ASSESSED VALUATIONS, VALUATIONS BY SCHOOL DISTRICTS AS EQUALIZED BY DEPARTMENT OF TAXATION, SOLD FOR TAXES, PAID, WHEN PAID, Number of Receipt, March Settlement 1959, June Settlement 1959, Penalty, November Settlement 1959, Penalty, Collections to First Monday in January 1960, Penalty, Delinquent on First Monday in January 1960, Total Delinquent Tax and Penalty, REMARKS.

Mattie Thuesen
Amie Marie Johnson & Caroline C. Lindstrom
Amie Marie Johnson & Caroline C. Lindstrom

Balance Paid JUN 2 1959
Part Paid JUN 2 1959
Balance Paid JUN 2 1959
Part Paid JUN 2 1959
Balance Paid JUN 2 1959
Part Paid JUN 2 1959
Balance Paid NOV 2 1959
Part Paid NOV 2 1959

2nd Half Paid OCT 2 8 1959
1st Half Paid MAY 2 9 1959
2nd Half Paid OCT 2 8 1959
1st Half Paid MAY 2 9 1959

10% overcollected

10% overcollected

11-2-31
Chippewa Point
Kahekona Springs
101 Hwy
at Addition to
Gumbe Beach

Assessment Roll and Tax List of Real Property in the Town of Shungober

Cass County, Minnesota, for Taxes for the Year 1958.

Indicate Type of Property: R-Residential, C-Commercial, I-Industrial, U-Utility, F-Farm, L-Lakeshore, T-Timber, M-Mineral

Main table with columns: IN WHOSE NAME ASSESSED, TO WHOM TRANSFERRED, DESCRIPTION OF PROPERTY, TRUE AND FULL VALUATIONS, ASSESSED VALUATIONS, VALUATIONS BY SCHOOL DISTRICTS AS EQUALIZED BY DEPARTMENT OF TAXATION, TAXES, PAID, WHEN PAID, etc.

112-31
Chippewa Point
Kahokona Springs
101st Hwy
East Addn to
Gunne Beach

Assessment Roll and Tax List of Real Property in the Town of Shinglee

Indicate Type of Property: R-Residential, C-Commercial, I-Industrial, U-Utility, F-Farm, L-Lakeshore, T-Timber, M-Mineral

Cass County, Minnesota, for Taxes for the Year 1958.

Table with columns: IN WHOSE NAME ASSESSED, TO WHOM TRANSFERRED, DESCRIPTION OF PROPERTY, TRUE AND FULL VALUATIONS, ASSESSED VALUATIONS, FINAL EQUALIZED VALUE. Includes handwritten entries for Ervin Shoffner and Earle & Pauline Bogert.

Table with columns: SOLD FOR TAXES, VALUATIONS BY SCHOOL DISTRICTS AS EQUALIZED BY DEPARTMENT OF TAXATION, TAX INCLUDING STATE HOMESTEAD, SPECIAL TAXES, TOTAL TAXES, PAID, WHEN PAID, Number of Receipt, March Settlement 1959, June Settlement 1959, Penalty, November Settlement 1959, Collections to First Monday in January 1960, Delinquent on First Monday in January 1960, Total Delinquent Tax and Penalty, REMARKS.

112-31, Red Island, Chippewa Point, Kabesona Springs, Off Hwy, Add'l to Gunter Beach

Assessment Roll and Tax List of Real Property in the Town of Shingle

* Indicate Type of Property: R-Residential, C-Commercial, I-Industrial, U-Utility, F-Farm, L-Lakeshore, T-Timber, M-Mineral

Form 5017

DESCRIPTION OF PROPERTY

TRUE AND FULL VALUATIONS

ASSESSED VALUATIONS

Table with columns: IN WHOSE NAME ASSESSED, TO WHOM TRANSFERRED, SUBDIVISION, Sec. or Lot, Town or Block, Rng., Number of Acres of Land, No. School District, Indicate Homestead, Indicate Agricultural, Indicate Type of Property, LAND Exclusive of Structures and Improvements, BUILDINGS and Other Structures, MACHINERY Permanently Attached to Real Estate, TOTAL True and Full Value, RURAL (Homestead, Over \$4,000 and Non-Homestead), ALL OTHER (Timber Land Class 3e, Homestead, Over \$4,000 and Non-Homestead), MACHINERY Permanently Attached to Real Estate, TOTAL ASSESSED VALUE, Total Assessed Value as Equalized by the Board of Review, FINAL EQUALIZED VALUE.

Cass County, Minnesota, for Taxes for the Year 1958.

Table with columns: SOLD FOR TAXES, VALUATIONS BY SCHOOL DISTRICTS AS EQUALIZED BY DEPARTMENT OF TAXATION (District No., Rate), Tax including State Homestead, State Tax on Non-Homestead, SPECIAL TAXES, TOTAL TAXES, PAID, WHEN PAID (Month, Day, Year), Number of Receipt, March Settlement 1959, June Settlement 1959, November Settlement 1959, Penalty, Collections to First Monday in January 1960, Delinquent on First Monday in January 1960, Total Delinquent Tax and Penalty, REMARKS.

112-31
Beach on Island
Chippewa Point
Kabeokora Springs
1017 Hwy
1st Addition
Quince Beach

Assessment Roll and Tax List of Real Property in the Town of Shingler, Cass County, Minnesota, for Taxes for the Year 1958.

Cass County, Minnesota, for Taxes for the Year 1958.

* Indicate Type of Property: R-Residential, C-Commercial, I-Industrial, U-Utility, F-Farm, L-Lakeshore, T-Timber, M-Mineral

Table with columns: IN WHOSE NAME ASSESSED, TO WHOM TRANSFERRED, DESCRIPTION OF PROPERTY, TRUE AND FULL VALUATIONS, ASSESSED VALUATIONS, VALUATIONS BY SCHOOL DISTRICTS AS EQUALIZED BY DEPARTMENT OF TAXATION, SOLD FOR TAXES, PAID, WHEN PAID, Number of Receipt, March Settlement 1959, June Settlement 1959, November Settlement 1959, Collections to First Monday in January 1960, Delinquent on First Monday in January 1960, Total Delinquent Tax and Penalty, REMARKS.

Assessment Roll and Tax List of Real Property in the Town of Shingler, Minnesota

Cass County, Minnesota, for Taxes for the Year 1958.

Table with columns: IN WHOSE NAME ASSESSED, TO WHOM TRANSFERRED, DESCRIPTION OF PROPERTY, TRUE AND FULL VALUATIONS, ASSESSED VALUATIONS, FINAL EQUALIZED VALUE.

Table with columns: SOLD FOR TAXES, VALUATIONS BY SCHOOL DISTRICTS AS EQUALIZED BY DEPARTMENT OF TAXATION, Tax including State Homestead, State Tax on Non-Homestead, SPECIAL TAXES, TOTAL TAXES, PAID, WHEN PAID, Number of Receipt, March Settlement 1959, June Settlement 1959, Penalty, November Settlement 1959, Penalty, Collections to First Monday in January 1960, Penalty, Delinquent on First Monday in January 1960, Total Delinquent Tax and Penalty, REMARKS.

Map labels: Beach Island, Chipewa Point, Kabecon Springs, Otterway, Gunne Beach.

Assessment Roll and Tax List of Real Property in the Town of Shinglee, Cass County, Minnesota, for Taxes for the Year 1958.

Cass County, Minnesota, for Taxes for the Year 1958.

Table with columns: IN WHOSE NAME ASSESSED, TO WHOM TRANSFERRED, DESCRIPTION OF PROPERTY, TRUE AND FULL VALUATIONS, ASSESSED VALUATIONS, VALUATIONS BY SCHOOL DISTRICTS AS EQUALIZED BY DEPARTMENT OF TAXATION, TAXES, PAID, WHEN PAID, Number of Receipt, March Settlement 1959, June Settlement 1959, Penalty, November Settlement 1959, Penalty, Collections to First Monday in January 1960, Penalty, Delinquent on First Monday in January 1960, Total Delinquent Tax and Penalty, REMARKS.

Assessment Roll and Tax List of Real Property in the Town of Shingobee

Cass County, Minnesota, for Taxes for the Year 1958.

Form SCD 1958-59 MINN. DEPT. OF REVENUE

Indicate Type of Property: R-Residential, C-Commercial, I-Industrial, U-Utility, F-Farm, L-Lakeshore, T-Timber, M-Mineral

Table with columns: IN WHOSE NAME ASSESSED, TO WHOM TRANSFERRED, DESCRIPTION OF PROPERTY, TRUE AND FULL VALUATIONS, ASSESSED VALUATIONS, VALUATIONS BY SCHOOL DISTRICTS AS EQUALIZED BY DEPARTMENT OF TAXATION, TAXES, PAID, WHEN PAID, etc.

11-2-51

Island

Point

Springs

1011 Hwy

Beach

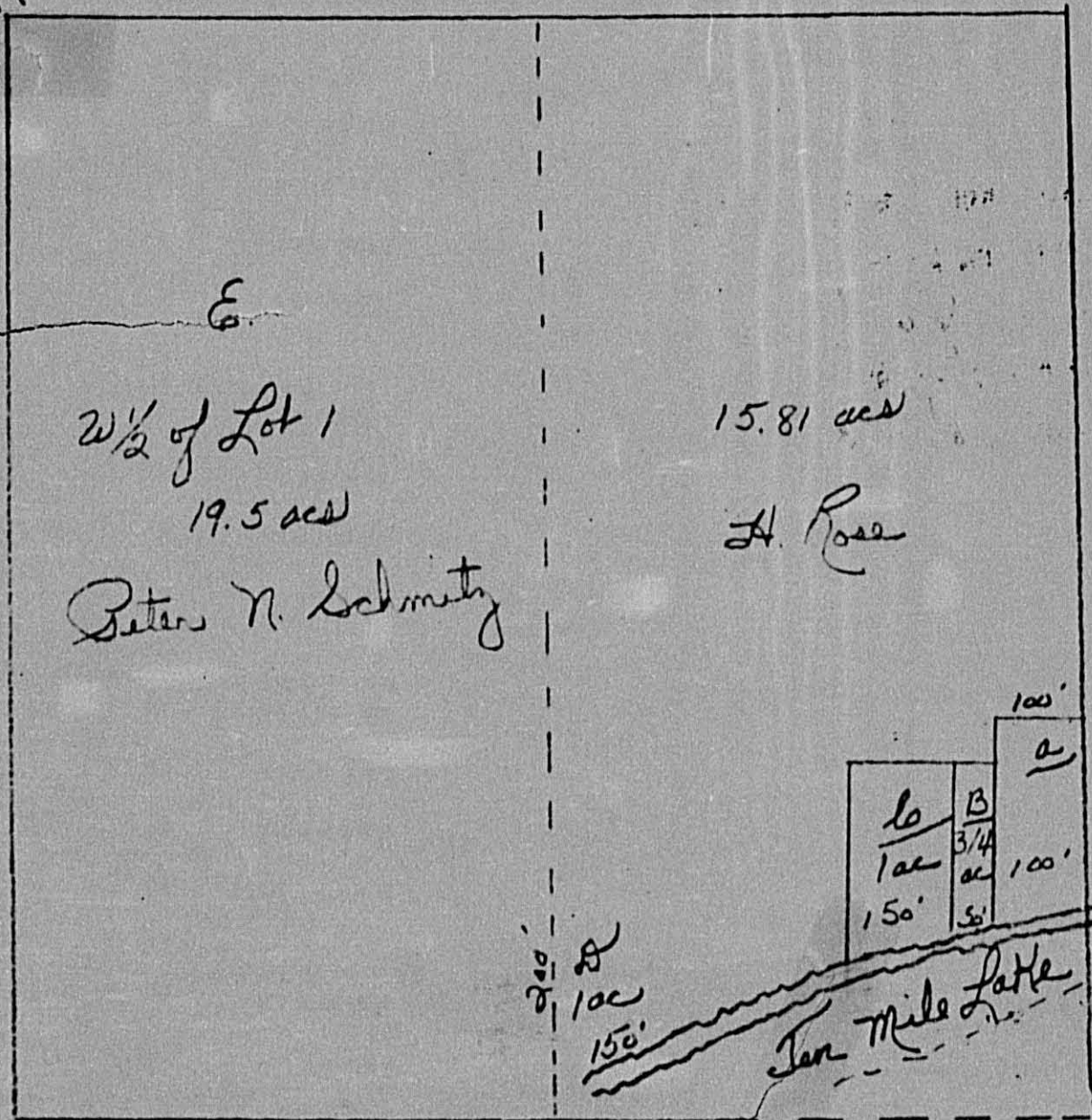
Assessment Roll and Tax List of Real Property in the Town of Shingle Lake

Cass County, Minnesota, for Taxes for the Year 1958.

Indicate Type of Property: R-Residential, C-Commercial, I-Industrial, U-Utility, F-Farm, L-Lakeshore, T-Timber, M-Mineral

Table with columns: IN WHOSE NAME ASSESSED, TO WHOM TRANSFERRED, DESCRIPTION OF PROPERTY, TRUE AND FULL VALUATIONS, ASSESSED VALUATIONS, VALUATIONS BY SCHOOL DISTRICTS AS EQUALIZED BY DEPARTMENT OF TAXATION, SOLD FOR TAXES, PAID, WHEN PAID, Number of Receipt, March Settlement 1959, June Settlement 1959, Penalty, November Settlement 1959, Penalty, Collections to First Monday in January 1960, Delinquent on First Monday in January 1960, Total Delinquent Tax and Penalty, REMARKS.

Dingler
1957



E.
W 1/2 of Lot 1
19.5 acs
Peter N. Schmitz

15.81 acs
H. Rose

- A. J. Kolderie
- B. "
- C. Elmer Nordland
- D. Henry Rose
- E. Peter N. Schmitz

Except for distance
given this map is not
exact as we don't
have the distance of
lake

Lot 1 Sec 34-141-31

Assessment Roll and Tax List of Real Property in the Town of Shinglee,
* Indicate Type of Property: R-Residential, C-Commercial, I-Industrial, U-Utility, F-Farm, L-Lakeshore, T-Timber, M-Mineral

Cass County, Minnesota, for Taxes for the Year 1958.

IN WHOSE NAME ASSESSED	TO WHOM TRANSFERRED	DESCRIPTION OF PROPERTY				TRUE AND FULL VALUATIONS				ASSESSED VALUATIONS							FINAL EQUALIZED VALUE	SOLD FOR TAXES	VALUATIONS BY SCHOOL DISTRICTS AS EQUALIZED BY DEPARTMENT OF TAXATION								PAID	WHEN PAID	Number of Receipt	March Settlement 1959	June Settlement 1959	November Settlement 1959	Collections to First Monday in January 1960	Penalty	Delinquent on First Monday in January 1960	Total Delinquent Tax and Penalty	REMARKS				
		SUBDIVISION	Sec. or Lot	Town or Block	Rng.	Number of Acres of Land	LAND Exclusive of Structures and Improvements	BUILDINGS and Other Structures	MACHINERY Permanently Attached to Real Estate	TOTAL True and Full Value	RURAL		ALL OTHER						TOTAL ASSESSED VALUE	Total Assessed Value as Equalized by the Board of Review	District No.	District Rate	District No.	District Rate	District No.	District Rate												District No.	District Rate	SPECIAL TAXES	TOTAL TAXES
											Acres	100ths	Homestead Up to \$4,000 20%	Over \$4,000 and Non-Homestead 33 1/3%	Timber Land Class 3e 20%	Homestead Up to \$4,000 25%																									
Theodore & Helen S. Folden	Elmer Nordlund	50' x approx. 250' of Lot 1				75	70	70	L	75					25																										
		150' x approx. 250' of Lot 1				100	70	70	L	100	715	650			815	271	250																								
		NW 1/4 of NW 1/4																																							
		SW 1/4 of NW 1/4																																							
		SE 1/4 of NW 1/4																																							
Theodore & Helen S. Folden		com. at intersection of E. line of Lot 1 + 1/2 mile lake N. 250' x 100' S to lake N-E to pt. of begin.				57	70	70	R	101	1595	1450			1696	565	517																								
		NW 1/4 of SW 1/4																																							
		NW 1/4 of SW 1/4																																							
		SW 1/4 of SW 1/4																																							
Jessie L. Brunell Stanley H. Taylor		S. 250' of Lot 2				11	44	70	R	560	1321	1201			1881	627	587																								
		NW 1/4 of SW 1/4																																							
		NW 1/4 of SW 1/4																																							
		SW 1/4 of SW 1/4																																							
		SE 1/4 of SW 1/4																																							
						13	76				836	3301	3631		4137	1379	1488																								

Beach po Island
 Chiiperna Point
 Kabeokona Springs
 1st Add'n to
 Gumbe Beach

Assessment Roll and Tax List of Real Property in the Town of Shingler

Indicate Type of Property: R-Residential, C-Commercial, I-Industrial, U-Utility, F-Farm, L-Lakeshore, T-Timber, M-Mineral

Cass County, Minnesota, for Taxes for the Year 1958.

Table with columns: IN WHOSE NAME ASSESSED, TO WHOM TRANSFERRED, DESCRIPTION OF PROPERTY, TRUE AND FULL VALUATIONS, ASSESSED VALUATIONS (RURAL, ALL OTHER), VALUATIONS BY SCHOOL DISTRICTS AS EQUALIZED BY DEPARTMENT OF TAXATION, Tax including State Homestead, State Tax on Non-Homestead, SPECIAL TAXES, TOTAL TAXES, PAID, WHEN PAID, Number of Receipt, March Settlement 1959, June Settlement 1959, Penalty, November Settlement 1959, Penalty, Collections to First Monday in January 1960, Penalty, Delinquent on First Monday in January 1960, Total Delinquent Tax and Penalty, REMARKS.

Assessment Roll and Tax List of Real Property in the Town of Shingobee

Form SCD WILLIAMS-BROWN COMPANY, MINNEAPOLIS

Indicate Type of Property: R-Residential, C-Commercial, I-Industrial, U-Utility, F-Farm, L-Lakeshore, T-Timber, M-Mineral

112-31

Table with columns: IN WHOSE NAME ASSESSED, TO WHOM TRANSFERRED, DESCRIPTION OF PROPERTY, TRUE AND FULL VALUATIONS, ASSESSED VALUATIONS, FINAL EQUALIZED VALUE. Includes handwritten entries for 'Ethel Peterson' and various lot numbers.

Cass County, Minnesota, for Taxes for the Year 1958.

Table with columns: SOLD FOR TAXES, VALUATIONS BY SCHOOL DISTRICTS AS EQUALIZED BY DEPARTMENT OF TAXATION, Tax including State Homestead, SPECIAL TAXES, TOTAL TAXES, PAID, WHEN PAID, Number of Receipt, March Settlement 1959, June Settlement 1959, November Settlement 1959, Collections to First Monday in January 1960, Delinquent on First Monday in January 1960, Total Delinquent Tax and Penalty, REMARKS. Includes handwritten tax amounts and dates.

Vertical text on the right edge of the page: Lake Beach, Isle of Lakes, Chippewa Point, Kabeokona Springs, Lake Umbagog, East Addis, to...

Assessment Roll and Tax List of Real Property in the Town of Shingle,
* Indicate Type of Property: R-Residential, C-Commercial, I-Industrial, U-Utility, F-Farm, L-Lakeshore, T-Timber, M-Mineral

Cass County, Minnesota, for Taxes for the Year 1958.

Form SCD UNIFORM COUNTY, MINNESOTA

112-31

IN WHOSE NAME ASSESSED	TO WHOM TRANSFERRED	DESCRIPTION OF PROPERTY				No. School District	Indicate Homestead Tax or No	Indicate Agricultural Tax or No	Indicate Type of Property	TRUE AND FULL VALUATIONS				ASSESSED VALUATIONS						FINAL EQUALIZED VALUE	
		SUBDIVISION	Sec. of Lot	Town or Block	Rng.					Number of Acres of Land	Machinery Permanently Attached to Real Estate	TOTAL True and Full Value	RURAL		ALL OTHER		Machinery Permanently Attached to Real Estate	TOTAL ASSESSED VALUE	Total Assessed Value as Equalized by the Board of Review		
													Homestead Up to \$4,000	Over \$4,000 and Non-Homestead	Timber Land Class 1c	Homestead Up to \$4,000					Over \$4,000 and Non-Homestead
													20%	33 1/8%	20%	25%					40%
Dollars	Dollars	Dollars	Dollars	Dollars	Dollars	Dollars	Dollars	Dollars	Dollars	Dollars	Dollars	Dollars	Dollars	Dollars							
		NE 1/4 of NE 1/4			4 1/2 (3)																
		NW 1/4 of NE 1/4																			
		SW 1/4 of NE 1/4																			
		SE 1/4 of NE 1/4																			
State of Minnesota		NE 1/4 of NW 1/4 Lot 1																			
		NW 1/4 of NW 1/4																			
		SW 1/4 of NW 1/4																			
State of Minnesota		SE 1/4 of NW 1/4 Lot 2																			
U. S. of America		NE 1/4 of SW 1/4																			
U. S. of America		NW 1/4 of SW 1/4 Lot 4 less overflow																			
		SW 1/4 of SW 1/4 Lot 5																			
		SE 1/4 of SW 1/4																			
		NE 1/4 of SE 1/4																			
		NW 1/4 of SE 1/4																			
		SW 1/4 of SE 1/4																			
		SE 1/4 of SE 1/4																			

SOLD FOR TAXES	VALUATIONS BY SCHOOL DISTRICTS AS EQUALIZED BY DEPARTMENT OF TAXATION						Tax including State Homestead	State Tax on Non-Homestead	SPECIAL TAXES	TOTAL TAXES	PAID	WHEN PAID	Number of Receipt	March Settlement 1959	June Settlement 1959	Penalty	November Settlement 1959	Penalty	Collections to First Monday in January 1960	Penalty	Delinquent on First Monday in January 1960	Total Delinquent Tax and Penalty	REMARKS
	District No.	District No.	District No.	District No.	District No.	District No.																	
	Rate	Rate	Rate	Rate	Rate	Rate																	
	Mills	Mills	Mills	Mills	Mills	Mills																	
						\$ cts.	\$ cts.	\$ cts.	\$ cts.		Month Day Year		\$ cts.	\$ cts.	\$ cts.	\$ cts.	\$ cts.	\$ cts.	\$ cts.	\$ cts.	\$ cts.		
1																							
2																							
3																							
4																							
5																							
6																							
7																							
8																							
9																							
10																							
11																							
12																							
13																							
14																							
15																							
16																							
17																							
18																							
19																							
20																							

Shingle Beach, Pe Island, Chippewa Point, Kabecona Springs, Ne-Oftway, East Add'r to Gunter Beach

Assessment Roll and Tax List of Real Property in the Town of Shingle

Form 500-500-500-500-500-500

Indicate Type of Property: R-Residential, C-Commercial, I-Industrial, U-Utility, F-Farm, L-Lakeshore, T-Timber, M-Mineral

Cass County, Minnesota, for Taxes for the Year 1958.

Table with columns: IN WHOSE NAME ASSESSED, TO WHOM TRANSFERRED, DESCRIPTION OF PROPERTY, TRUE AND FULL VALUATIONS, ASSESSED VALUATIONS, VALUATIONS BY SCHOOL DISTRICTS AS EQUALIZED BY DEPARTMENT OF TAXATION, SOLD FOR TAXES, PAID, WHEN PAID, SPECIAL TAXES, TOTAL TAXES, and REMARKS.

Assessment Roll and Tax List of Real Property in the Town of Shingler

Cass County, Minnesota, for Taxes for the Year 1958.

Form 507

142-31

Table with columns: IN WHOSE NAME ASSESSED, TO WHOM TRANSFERRED, DESCRIPTION OF PROPERTY, TRUE AND FULL VALUATIONS, ASSESSED VALUATIONS, VALUATIONS BY SCHOOL DISTRICTS AS EQUALIZED BY DEPARTMENT OF TAXATION, and REMARKS. Includes handwritten entries for Clifford L. & Eleanor R. Jensen, Arthur Helmech, Louis Gude, and Henry & Shirley Heathman.

Assessment Roll and Tax List of Real Property in the Town of Shungbee

Indicate Type of Property: R-Residential, C-Commercial, I-Industrial, U-Utility, F-Farm, L-Lakeshore, T-Timber, M-Mineral

Cass County, Minnesota, for Taxes for the Year 1958.

Main table with columns: IN WHOSE NAME ASSESSED, TO WHOM TRANSFERRED, DESCRIPTION OF PROPERTY, TRUE AND FULL VALUATIONS, ASSESSED VALUATIONS, VALUATIONS BY SCHOOL DISTRICTS AS EQUALIZED BY DEPARTMENT OF TAXATION, TAXES, PAID, WHEN PAID, etc.

142-31

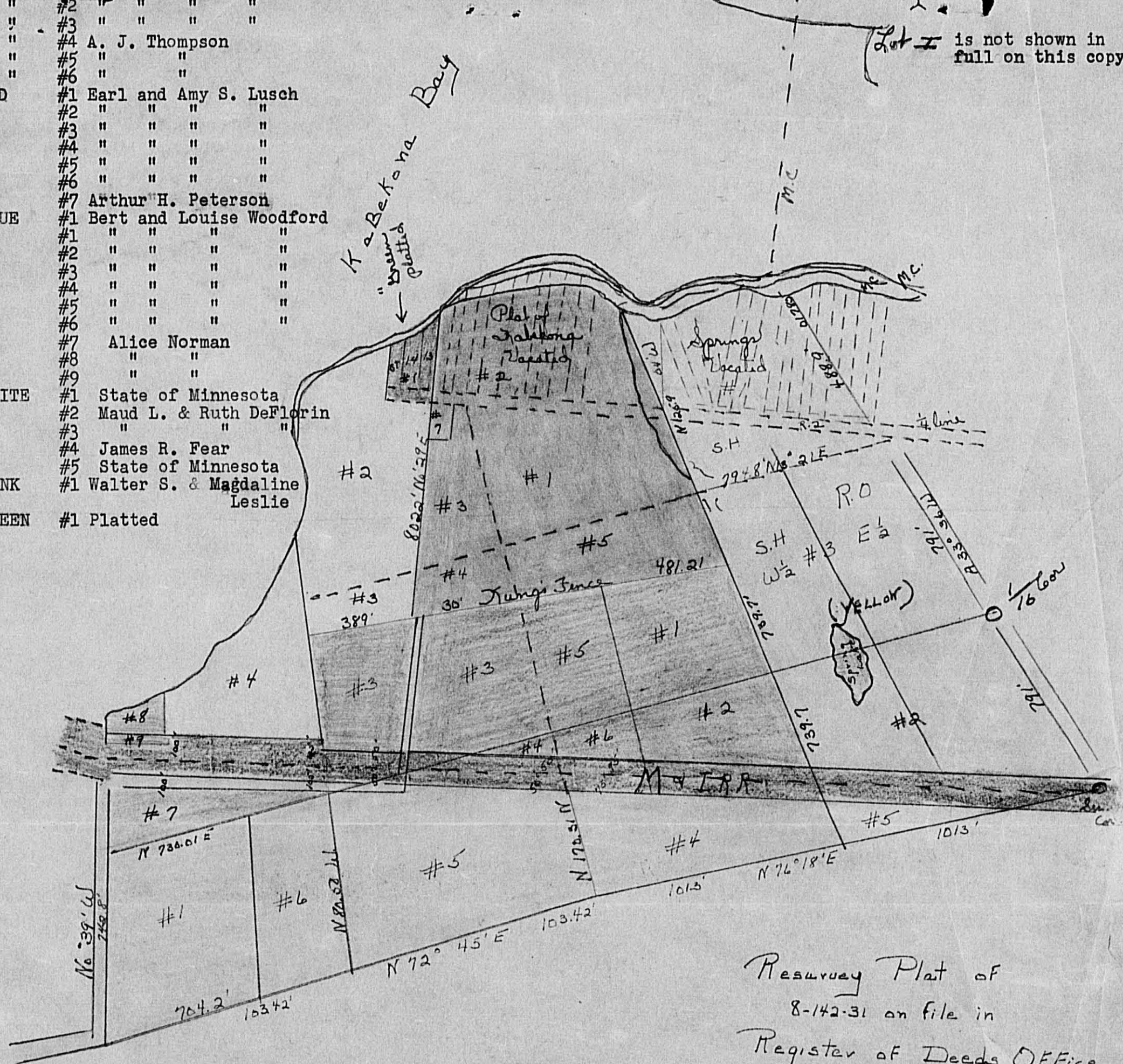
Maple Beach, Lake Island, Onipawa Point, Kabekona Springs, 1st Addn to Gunne Beach

- Donald C. & Maxine D. Cooke
- YELLOW #1 R. A. and S. H. Simenson
 - " #2 " " " "
 - " #3 " " " "
 - " #4 A. J. Thompson
 - " #5 " " " "
 - " #6 " " " "
 - RED #1 Earl and Amy S. Lusch
 - " #2 " " " "
 - " #3 " " " "
 - " #4 " " " "
 - " #5 " " " "
 - " #6 " " " "
 - " #7 Arthur H. Peterson
 - BLUE #1 Bert and Louise Woodford
 - " #1 " " " "
 - " #2 " " " "
 - " #3 " " " "
 - " #4 " " " "
 - " #5 " " " "
 - " #6 " " " "
 - " #7 Alice Norman
 - " #8 " " " "
 - " #9 " " " "
 - WHITE #1 State of Minnesota
 - " #2 Maud L. & Ruth DeFlorin
 - " #3 " " " "
 - " #4 James R. Fear
 - " #5 State of Minnesota
 - PINK #1 Walter S. & Magdaline Leslie
 - GREEN #1 Platted

LOT 1
10.75ac

N
↑

Lot I is not shown in full on this copy



Resurvey Plat of
8-142-31 on file in
Register of Deeds Office

Assessment Roll and Tax List of Real Property in the Town of Shingobe

* Indicate Type of Property: R-Residential, C-Commercial, I-Industrial, U-Utility, F-Farm, L-Lakeshore, T-Timber, M-Mineral

Cass County, Minnesota, for Taxes for the Year 1958.

Table with columns: IN WHOSE NAME ASSESSED, TO WHOM TRANSFERRED, DESCRIPTION OF PROPERTY, TRUE AND FULL VALUATIONS, ASSESSED VALUATIONS, VALUATIONS BY SCHOOL DISTRICTS AS EQUALIZED BY DEPARTMENT OF TAXATION, TAXES, PAID, WHEN PAID, etc.

Assessment Roll and Tax List of Real Property in the Town of Shingler

Indicate Type of Property: R-Residential, C-Commercial, I-Industrial, U-Utility, F-Farm, L-Lakeshore, T-Timber, M-Mineral

Cass County, Minnesota, for Taxes for the Year 1958.

Main assessment roll table with columns: IN WHOSE NAME ASSESSED, TO WHOM TRANSFERRED, DESCRIPTION OF PROPERTY, TRUE AND FULL VALUATIONS, ASSESSED VALUATIONS, VALUATIONS BY SCHOOL DISTRICTS AS EQUALIZED BY DEPARTMENT OF TAXATION, TAXES, PAID, WHEN PAID, Number of Receipt, March Settlement 1959, June Settlement 1959, Penalty, November Settlement 1959, Penalty, Collections to First Monday in January 1960, Penalty, Delinquent on First Monday in January 1960, Total Delinquent Tax and Penalty, REMARKS.

14-2-31

State of Minnesota
Walter Nathan
Nathaniel C. Bean
Leonard Peterson
Ethel L. Peterson
State of Minnesota
U. S. of America

25 00
1053
351
351

Isle Beach
Chipewa Point
Kabeokne Springs
Jillway
Isle Add'n to
Gunne Beach

Assessment Roll and Tax List of Real Property in the Town of Shungobe

Indicate Type of Property: R-Residential, C-Commercial, I-Industrial, U-Utility, F-Farm, L-Lakeshore, T-Timber, M-Mineral

Form 50D

112-31

Table with columns: IN WHOSE NAME ASSESSED, TO WHOM TRANSFERRED, DESCRIPTION OF PROPERTY, TRUE AND FULL VALUATIONS, ASSESSED VALUATIONS, FINAL EQUALIZED VALUE.

Cass County, Minnesota, for Taxes for the Year 1958.

Table with columns: SOLD FOR TAXES, VALUATIONS BY SCHOOL DISTRICTS AS EQUALIZED BY DEPARTMENT OF TAXATION, SPECIAL TAXES, TOTAL TAXES, PAID, WHEN PAID, Number of Receipt, March Settlement, June Settlement, Penalty, November Settlement, Collections to First Monday in January 1960, Delinquent on First Monday in January 1960, Total Delinquent Tax and Penalty, REMARKS.

Beach to Island, Chipewa Point, Kabokona Springs, Off Hwy, Add'n to Gunee Beach

Assessment Roll and Tax List of Real Property in the Town of Iron of Shingobee County, Minnesota

* Indicate Type of Property: R-Residential, C-Commercial, I-Industrial, U-Utility, F-Farm, L-Lakeshore, T-Timber, M-Mineral

Cass County, Minnesota, for Taxes for the Year 1958.

IN WHOSE NAME ASSESSED	TO WHOM TRANSFERRED	DESCRIPTION OF PROPERTY				No. School District	Indicate Homestead Tax or No	Indicate Agricultural Tax or No	Indicate Type of Property	TRUE AND FULL VALUATIONS			ASSESSED VALUATIONS					Total Assessed Value as Equalized by the Board of Review	FINAL EQUALIZED VALUE		
		SUBDIVISION	Sec. or Lot	Town or Block	Rng.					Number of Acres of Land	MACHINERY Permanently Attached to Real Estate	TOTAL True and Full Value	RURAL		ALL OTHER		MACHINERY Permanently Attached to Real Estate			TOTAL ASSESSED VALUE	Dollars
													Homestead	Over \$4,000 and Non-Homestead	Homestead	Over \$4,000 and Non-Homestead					
													Up to \$4,000	33 1/3 %	Up to \$4,000	40 %					
U. S. of America	<i>(in trust for Merin. Chippewa Forest)</i>	NE 1/4 of NE 1/4	13	142	31																
		NW 1/4 of NE 1/4																			
		SW 1/4 of NE 1/4																			
		SE 1/4 of NE 1/4																			
		NE 1/4 of NW 1/4																			
		NW 1/4 of NW 1/4																			
		SW 1/4 of NW 1/4																			
		SE 1/4 of NW 1/4																			
		NE 1/4 of SW 1/4																			
		NW 1/4 of SW 1/4																			
		SW 1/4 of SW 1/4																			
		SE 1/4 of SW 1/4																			
		NE 1/4 of SE 1/4																			
		NW 1/4 of SE 1/4																			
		SW 1/4 of SE 1/4																			
		SE 1/4 of SE 1/4																			

SOLD FOR TAXES	VALUATIONS BY SCHOOL DISTRICTS AS EQUALIZED BY DEPARTMENT OF TAXATION						Tax including State Homestead	State Tax on Non-Homestead	SPECIAL TAXES	TOTAL TAXES	PAID	WHEN PAID	Number of Receipt	March Settlement 1959	June Settlement 1959	Penalty 1959	November Settlement 1959	Penalty 1959	Collections to First Monday in January 1960	Penalty 1960	Delinquent on First Monday in January 1960	Total Delinquent Tax and Penalty	REMARKS																
	District No.	District No.	District No.	District No.	District No.	District No.																		Rate	Rate	Rate	Rate	Rate	Rate	Rate	Rate	Rate	Rate	Rate	Rate	Rate	Rate	Rate	
	-----	-----	-----	-----	-----	-----																		-----	-----	-----	-----	-----	-----	-----	-----	-----	-----	-----	-----	-----	-----	-----	-----
	Mills	Mills	Mills	Mills	Mills	Mills																		Mills	Mills	Mills	Mills	Mills	Mills	Mills	Mills	Mills	Mills	Mills	Mills	Mills	Mills	Mills	Mills

112-31
 Cass County, Minnesota
 Chippewa Point
 Rabokrom Springs
 Gunne Beach
 1st Add'n to
 Gunne Beach

Assessment Roll and Tax List of Real Property in the Town of Shingobee

Form SCD MILLER-DAY COMPANY, MINNEAPOLIS

Indicate Type of Property: R-Residential, C-Commercial, I-Industrial, U-Utility, F-Farm, L-Lakeshore, T-Timber, M-Mineral

Cass County, Minnesota, for Taxes for the Year 1958.

IN WHOSE NAME ASSESSED	TO WHOM TRANSFERRED	DESCRIPTION OF PROPERTY		TRUE AND FULL VALUATIONS										TOTAL ASSESSED VALUE	Total Assessed Value as Equalized by the Board of Review	FINAL EQUALIZED VALUE	
				RURAL					ALL OTHER								
				Land	Buildings	Machinery	Total	Homestead	Over \$4,000	Timber	Homestead	Over \$4,000	Machinery				Total
		Subdivision	Sec. of Lot	Town or Block	Rng.	Number of Acres of Land											
						Acres											

Coletent L. & Jane Nye Andrews

SOLD FOR TAXES	VALUATIONS BY SCHOOL DISTRICTS AS EQUALIZED BY DEPARTMENT OF TAXATION						Tax including State Homestead	State Tax on Non-Homestead	SPECIAL TAXES	TOTAL TAXES	PAID	WHEN PAID	Number of Receipt	March Settlement 1959	June Settlement 1959	Penalty	November Settlement 1959	Penalty	Collections to First Monday in January 1960	Penalty	Delinquent on First Monday in January 1960	Total Delinquent Tax and Penalty	REMARKS
	District No.	District No.	District No.	District No.	District No.	District No.																	
	Rate	Rate	Rate	Rate	Rate	Rate																	

2nd HALF PAID OCT 15 1959 11922
1st Half Paid MAY 29 1959 14688

227 227

112-31

Beach

Island

Chippewa Point

Kaboons Springs

Offway

Add'n to

Gunne Beach

Assessment Roll and Tax List of Real Property in the Town of Shingabe

Indicate Type of Property: R-Residential, C-Commercial, I-Industrial, U-Utility, F-Farm, L-Lakeshore, T-Timber, M-Mineral

Cass County, Minnesota, for Taxes for the Year 1958.

Main table with columns: IN WHOSE NAME ASSESSED, TO WHOM TRANSFERRED, DESCRIPTION OF PROPERTY, TRUE AND FULL VALUATIONS, ASSESSED VALUATIONS, VALUATIONS BY SCHOOL DISTRICTS AS EQUALIZED BY DEPARTMENT OF TAXATION, TAXES, PAID, WHEN PAID, Number of Receipt, March Settlement, June Settlement, November Settlement, Collections to First Monday in January 1960, Delinquent on First Monday in January 1960, Total Delinquent Tax and Penalty, REMARKS.

Mary A. Gray, Best and Louise Woodford, Margaret D. Wright, Leslie D. & Irene M. Gardner, State of Minnesota, Best and Louise Woodford, Margaret D. Wright

John D. & Sophie Hanson, John A. & Sophie Hanson

Summary row with totals: 1154, 1219, 4396, 597, 597, 1154, 1219, 4396, 597, 597, 1154, 1219

Vertical text on the right edge: Cass County, Minnesota, for Taxes for the Year 1958.

Assessment Roll and Tax List of Real Property in the Town of Shungube

Cass County, Minnesota, for Taxes for the Year 1958.

Form 501

Indicate Type of Property: R-Residential, C-Commercial, I-Industrial, U-Utility, F-Farm, L-Lakeshore, T-Timber, M-Mineral

Table with columns for 'IN WHOSE NAME ASSESSED', 'TO WHOM TRANSFERRED', 'DESCRIPTION OF PROPERTY', 'TRUE AND FULL VALUATIONS', 'ASSESSED VALUATIONS', 'VALUATIONS BY SCHOOL DISTRICTS AS EQUALIZED BY DEPARTMENT OF TAXATION', 'SOLD FOR TAXES', 'PAID', 'WHEN PAID', 'Number of Receipt', 'March Settlement 1959', 'June Settlement 1959', 'November Settlement 1959', 'Collections to First Monday in January 1960', 'Penalty', 'Delinquent on First Monday in January 1960', 'Total Delinquent Tax and Penalty', 'REMARKS'.

Vertical text on the right margin: 112-31, Cass County, Minnesota, for Taxes for the Year 1958, Shungube, etc.

Assessment Roll and Tax List of Real Property in the Town of Shungbee

* Indicate Type of Property: R-Residential, C-Commercial, I-Industrial, U-Utility, F-Farm, L-Lakeshore, T-Timber, M-Mineral

Cass County, Minnesota, for Taxes for the Year 1958.

Table with columns: IN WHOSE NAME ASSESSED, TO WHOM TRANSFERRED, DESCRIPTION OF PROPERTY, TRUE AND FULL VALUATIONS, ASSESSED VALUATIONS, VALUATIONS BY SCHOOL DISTRICTS AS EQUALIZED BY DEPARTMENT OF TAXATION, TAXES, PAID, WHEN PAID, Number of Receipt, March Settlement 1959, June Settlement 1959, November Settlement 1959, Collections to First Monday in January 1960, Delinquent on First Monday in January 1960, Total Delinquent Tax and Penalty, REMARKS.

Handwritten notes and names: Wesley Hand + La Lada Hand, Albert Carlson, Raymond Lemke, John S. + Sophia Hanson, Milton J. Bratrud, John S. + Sophia Hanson, Milton J. Bratrud, Alfred W. + Edna N. Oberley, A. N. + Edna Oberley, Alfred N. + Edna N. Oberley, Village of Walker, Verdine A. + Helen J. Paulson, Eleanor M. Wurtis + Josephine W. Patterson

(Cont on next page)

Vertical text on the right edge: 1st Add'n to Gunee Beach, Kabkoma Springs, Chipewa Point, 1st Beach on Island

Assessment Roll and Tax List of Real Property in the Town of Shingler, Cass County, Minnesota, for Taxes for the Year 1958.

Table with columns: IN WHOSE NAME ASSESSED, TO WHOM TRANSFERRED, DESCRIPTION OF PROPERTY, TRUE AND FULL VALUATIONS, ASSESSED VALUATIONS, VALUATIONS BY SCHOOL DISTRICTS AS EQUALIZED BY DEPARTMENT OF TAXATION, TAXES, PAID, WHEN PAID, and REMARKS. Includes handwritten entries for Lewis A. & Nettie S. Becker, L. A. Becker, Mahlon G. & Ruby B. Sigler, John Stanson, Village of Walker, Wendelin & Agnes Aerdent, and Earl E. & Dorothy E. Walters.

Assessment Roll and Tax List of Real Property in the Town of Shungobe, Cass County, Minnesota, for Taxes for the Year 1958.

Table with columns: IN WHOSE NAME ASSESSED, TO WHOM TRANSFERRED, DESCRIPTION OF PROPERTY, TRUE AND FULL VALUATIONS, ASSESSED VALUATIONS, FINAL EQUALIZED VALUE.

Table with columns: VALUATIONS BY SCHOOL DISTRICTS AS EQUALIZED BY DEPARTMENT OF TAXATION, TAX INCLUDING STATE HOMESTEAD, SPECIAL TAXES, TOTAL TAXES, PAID, WHEN PAID, Number of Receipt, March Settlement, June Settlement, Penalty, November Settlement, Penalty, Collections to First Monday in January 1960, Delinquent on First Monday in January 1960, Total Delinquent Tax and Penalty, REMARKS.

Assessment Roll and Tax List of Real Property in the Town of Shungobe, Cass County, Minnesota, for Taxes for the Year 1958.

Indicate Type of Property: R-Residential, C-Commercial, I-Industrial, U-Utility, F-Farm, L-Lakeshore, T-Timber, M-Mineral

Cass County, Minnesota, for Taxes for the Year 1958.

Table with columns: IN WHOSE NAME ASSESSED, TO WHOM TRANSFERRED, DESCRIPTION OF PROPERTY, TRUE AND FULL VALUATIONS, ASSESSED VALUATIONS, VALUATIONS BY SCHOOL DISTRICTS AS EQUALIZED BY DEPARTMENT OF TAXATION, TAXES, PAID, WHEN PAID, Number of Receipt, March Settlement 1959, June Settlement 1959, Penalty, November Settlement 1959, Penalty, Collections to First Monday in January 1960, Penalty, Delinquent on First Monday in January 1960, Total Delinquent Tax and Penalty, REMARKS.

Assessment Roll and Tax List of Real Property in the Town of Shingabe of Shingabe County, Minnesota

Form 507 (MAY 1957)

Indicate Type of Property: R-Residential, C-Commercial, I-Industrial, U-Utility, F-Farm, L-Lakeshore, T-Timber, M-Mineral

IN WHOSE NAME ASSESSED	TO WHOM TRANSFERRED	DESCRIPTION OF PROPERTY				No. School District	Indicate Homestead Yes or No	Indicate Agricultural Yes or No	Indicate Type of Property	TRUE AND FULL VALUATIONS					ASSESSED VALUATIONS					Total Assessed Value as Equalized by the Board of Review	FINAL EQUALIZED VALUE	
		SUBDIVISION	Sec. or Lot	Town or Block	Rng.					Number of Acres of Land	LAND Exclusive of Structures and Improvements	+10% BUILDINGS and Other Structures	MACHINERY Permanently Attached to Real Estate	TOTAL True and Full Value	RURAL		ALL OTHER		MACHINERY Permanently Attached to Real Estate			TOTAL ASSESSED VALUE
															Homestead Up to \$4,000 20%	Over \$4,000 and Non-Homestead 33 1/3%	Timber Land Class 20%	Homestead Up to \$4,000 25%				
Edna Thue + Sigurd Edward Thue		Lot 2	23	142	31	25	20	119	R	375	1155		1530	306	1425	285	306	285				
Kenneth Willard + Agnes McAuley		400' x 90' of Lot 2				83		42	R	100	951		1051	210	965	193	210	193				
Theodore Norgard		10x16x16x16 of Lot 2 less platted				100		70	T	100			100				40	40				
Nels H. Olson		10x16x16x16 of Lot 2 less platted				100		70	T	100	50		150				60	60				
Max Mushatin		1/8 ac of Lot 2				180		42	R	180	1815		1995	399	1830	366	399	366				
Max + May M. Mushatin		Part of Lot 2						42	R	100			100	20			20					
						29 83				1005	3565		4570	864	4926	935	100	964				
																		1035				

Cass County, Minnesota, for Taxes for the Year 1958.

SOLD FOR TAXES	VALUATIONS BY SCHOOL DISTRICTS AS EQUALIZED BY DEPARTMENT OF TAXATION						Tax including State Homestead	State Tax on Non-Homestead	SPECIAL TAXES	TOTAL TAXES	PAID	WHEN PAID	Number of Receipt	March Settlement 1959	June Settlement 1959	Penalty	November Settlement 1959	Penalty	Collections to First Monday in January 1960	Penalty	Delinquent on First Monday in January 1960	Total Delinquent Tax and Penalty	REMARKS
	District No.	District No.	District No.	District No.	District No.	District No.																	
	Rate	Rate	Rate	Rate	Rate	Rate																	
1	H 306						7926		7926	1	PAID IN FULL	JAN 5 1959	3	7926									
2										2													
3	H 210						5460		5460	3	PAID IN FULL	APR 23 1959	2283		5460								
4										4													
5	40						1040	26	1066	5	PAID IN FULL	MAY 29 1959	14944		1066								
6										6													
7	60						1560	40	1600	7										1600			
8										8													
9										9													
10	H 399						10374		10374	10	2nd Half Paid	MAY 29 1959	17532		5187		5187						
11										11													
12										12													
13										13													
14										14													
15	H 20						520		520	15	2nd Half Paid	MAY 29 1959	17532		260		260						
16										16													
17										17													
18										18													
19										19													
20	H 935						26880	66	26946	20					7926	11973		5447					1600

Shingabe Beach, Cass County, Minnesota

Assessment Roll and Tax List of Real Property in the Town of Shingle of Shingle

* Indicate Type of Property: R-Residential, C-Commercial, I-Industrial, U-Utility, F-Farm, L-Lakeshore, T-Timber, M-Mineral

Cass County, Minnesota, for Taxes for the Year 1958.

Table with columns: IN WHOSE NAME ASSESSED, TO WHOM TRANSFERRED, SUBDIVISION, TRUE AND FULL VALUATIONS, ASSESSED VALUATIONS, FINAL EQUALIZED VALUE. Includes handwritten entries for property owners like Russell & Ruby Angel, Julius & Mennie Johnson, etc.

Table with columns: VALUATIONS BY SCHOOL DISTRICTS AS EQUALIZED BY DEPARTMENT OF TAXATION, TAXES, PAID, WHEN PAID, Number of Receipt, March Settlement, June Settlement, November Settlement, Collections to First Monday in January, Delinquent on First Monday in January, Total Delinquent Tax and Penalty, REMARKS. Includes handwritten entries for tax payments and dates.

Vertical text on the right edge of the page: 112-31, 112-32, 112-33, 112-34, 112-35, 112-36, 112-37, 112-38, 112-39, 112-40, 112-41, 112-42, 112-43, 112-44, 112-45, 112-46, 112-47, 112-48, 112-49, 112-50, 112-51, 112-52, 112-53, 112-54, 112-55, 112-56, 112-57, 112-58, 112-59, 112-60, 112-61, 112-62, 112-63, 112-64, 112-65, 112-66, 112-67, 112-68, 112-69, 112-70, 112-71, 112-72, 112-73, 112-74, 112-75, 112-76, 112-77, 112-78, 112-79, 112-80, 112-81, 112-82, 112-83, 112-84, 112-85, 112-86, 112-87, 112-88, 112-89, 112-90, 112-91, 112-92, 112-93, 112-94, 112-95, 112-96, 112-97, 112-98, 112-99, 112-100.

Assessment Roll and Tax List of Real Property in the Town of Shingler

Cass County, Minnesota, for Taxes for the Year 1958.

Form 3071 ILLINOIS STATE BOARD OF EQUALIZATION

Indicate Type of Property: R-Residential, C-Commercial, I-Industrial, U-Utility, F-Farm, L-Lakeshore, T-Timber, M-Mineral

Table with columns: IN WHOSE NAME ASSESSED, TO WHOM TRANSFERRED, DESCRIPTION OF PROPERTY, TRUE AND FULL VALUATIONS, ASSESSED VALUATIONS, and FINAL EQUALIZED VALUE.

Table with columns: VALUATIONS BY SCHOOL DISTRICTS AS EQUALIZED BY DEPARTMENT OF TAXATION, TAXES, PAID, WHEN PAID, and REMARKS.

Vertical text on the right edge of the page: Chipewagon Point, Kapokona Springs, etc.

Assessment Roll and Tax List of Real Property in the Town of Shungobee

Cass County, Minnesota, for Taxes for the Year 1958.

* Indicate Type of Property: R-Residential, C-Commercial, I-Industrial, U-Utility, F-Farm, L-Lakeshore, T-Timber, M-Mineral

Table with columns for IN WHOSE NAME ASSESSED, TO WHOM TRANSFERRED, DESCRIPTION OF PROPERTY, TRUE AND FULL VALUATIONS, ASSESSED VALUATIONS, VALUATIONS BY SCHOOL DISTRICTS AS EQUALIZED BY DEPARTMENT OF TAXATION, TAXES, PAID, WHEN PAID, and REMARKS. Includes handwritten entries for property descriptions and tax payment details.

Assessment Roll and Tax List of Real Property in the Town of Shingabe, Cass County, Minnesota, for Taxes for the Year 1958.

Form 507 UNIFORM COUNTY, MINNESOTA. Indicate Type of Property: R-Residential, C-Commercial, I-Industrial, U-Utility, F-Farm, L-Lakeshore, T-Timber, M-Mineral

Table with columns: IN WHOSE NAME ASSESSED, TO WHOM TRANSFERRED, DESCRIPTION OF PROPERTY, TRUE AND FULL VALUATIONS, ASSESSED VALUATIONS, and FINAL EQUALIZED VALUE. Includes handwritten entries for Paul B. Jewell, Phillip J. & Dorothy C. Jewell, and John C. & Helen M. Jewell.

Table with columns: VALUATIONS BY SCHOOL DISTRICTS AS EQUALIZED BY DEPARTMENT OF TAXATION, SOLD FOR TAXES, SPECIAL TAXES, TOTAL TAXES, PAID, WHEN PAID, and REMARKS. Includes handwritten tax amounts and payment dates.

Vertical text on the right edge of the page: Chippewa Point, Kabeokona Springs, Gunne Beach.

Assessment Roll and Tax List of Real Property in the Town of Shingobee

Cass County, Minnesota, for Taxes for the Year 1958.

* Indicate Type of Property: R-Residential, C-Commercial, I-Industrial, U-Utility, F-Farm, L-Lakeshore, T-Timber, M-Mineral

Table with columns: IN WHOSE NAME ASSESSED, TO WHOM TRANSFERRED, DESCRIPTION OF PROPERTY, TRUE AND FULL VALUATIONS, ASSESSED VALUATIONS, VALUATIONS BY SCHOOL DISTRICTS AS EQUALIZED BY DEPARTMENT OF TAXATION, TAXES, PAID, WHEN PAID, Number of Receipt, March Settlement 1959, June Settlement 1959, November Settlement 1959, Penalty, Collections to First Monday in January 1960, Delinquent on First Monday in January 1960, Total Delinquent Tax and Penalty, REMARKS.

Assessment Roll and Tax List of Real Property in the Town of Shingle Creek, Minnesota

Cass County, Minnesota, for Taxes for the Year 1958.

Table with columns: IN WHOSE NAME ASSESSED, TO WHOM TRANSFERRED, DESCRIPTION OF PROPERTY, TRUE AND FULL VALUATIONS, ASSESSED VALUATIONS, VALUATIONS BY SCHOOL DISTRICTS AS EQUALIZED BY DEPARTMENT OF TAXATION, TAXES, PAID, WHEN PAID, Number of Receipt, March Settlement 1959, June Settlement 1959, Penalty, November Settlement 1959, Penalty, Collections to First Monday in January 1960, Penalty, Delinquent on First Monday in January 1960, Total Delinquent Tax and Penalty, REMARKS.

Assessment Roll and Tax List of Real Property in the Town of Shingle Lake, Minnesota

Indicate Type of Property: R-Residential, C-Commercial, I-Industrial, U-Utility, F-Farm, L-Lakeshore, T-Timber, M-Mineral

Table with columns: IN WHOSE NAME ASSESSED, TO WHOM TRANSFERRED, DESCRIPTION OF PROPERTY, TRUE AND FULL VALUATIONS, ASSESSED VALUATIONS, FINAL EQUALIZED VALUE. Includes handwritten entries for Leonard A. Grueler, J. M. Diehl, Phillip J. Jewell, Robert & Helen Trudolph, Wiley E. & Hartrude A. Potter, Phillip Jewell, Phillip J. & Dorothy C. Jewell, Wiley E. & Hartrude A. Potter, Phillip J. & Dorothy C. Jewell, U. S. of America.

Cass County, Minnesota, for Taxes for the Year 1958.

Table with columns: SOLD FOR TAXES, VALUATIONS BY SCHOOL DISTRICTS AS EQUALIZED BY DEPARTMENT OF TAXATION, Tax including State Homestead, State Tax on Non-Homestead, SPECIAL TAXES, TOTAL TAXES, PAID, WHEN PAID, Number of Receipt, March Settlement, June Settlement, Penalty, November Settlement, Penalty, Collections to First Monday in January 1960, Delinquent on First Monday in January 1960, Total Delinquent Tax and Penalty, REMARKS. Includes handwritten entries for district numbers and tax amounts.

Assessment Roll and Tax List of Real Property in the Town of Shingabe

Form SCD 1948-1949 EDITION, MINNAPOLIS

Indicate Type of Property: R-Residential, C-Commercial, I-Industrial, U-Utility, F-Farm, L-Lakeshore, T-Timber, M-Mineral

Cass County, Minnesota, for Taxes for the Year 1958.

Table with columns: IN WHOSE NAME ASSESSED, TO WHOM TRANSFERRED, DESCRIPTION OF PROPERTY, TRUE AND FULL VALUATIONS, ASSESSED VALUATIONS, and FINAL EQUALIZED VALUE. Includes handwritten entries for Bert L. Johnson and Andrew L. Johnson, R. E. & E. W. Stanley, and Berlyle L. Warren.

Table with columns: SOLD FOR TAXES, VALUATIONS BY SCHOOL DISTRICTS AS EQUALIZED BY DEPARTMENT OF TAXATION, Tax including State Homestead, SPECIAL TAXES, TOTAL TAXES, PAID, WHEN PAID, Number of Receipt, March Settlement 1959, June Settlement 1959, Penalty, November Settlement 1959, Penalty, Collections to First Monday in January 1960, Penalty, Delinquent on First Monday in January 1960, Total Delinquent Tax and Penalty, and REMARKS. Includes handwritten tax payment details and dates.

Vertical text on the right edge of the page: Sunrise Beach on Island, Chippewa Point, Kabecona Springs, Offway, and Add'n to Gunee Beach.

Assessment Roll and Tax List of Real Property in the Town of Shingle

Indicate Type of Property: R-Residential, C-Commercial, I-Industrial, U-Utility, F-Farm, L-Lakeshore, T-Timber, M-Mineral

Cass County, Minnesota, for Taxes for the Year 1958.

Table with columns: IN WHOSE NAME ASSESSED, TO WHOM TRANSFERRED, DESCRIPTION OF PROPERTY, TRUE AND FULL VALUATIONS, ASSESSED VALUATIONS, and FINAL EQUALIZED VALUE. Includes handwritten entries for property owners like Margaret J. Mc Larry and Floyd E. & Beva Bennett.

(Continued on next page)

Table with columns: SOLD FOR TAXES, VALUATIONS BY SCHOOL DISTRICTS AS EQUALIZED BY DEPARTMENT OF TAXATION, SPECIAL TAXES, TOTAL TAXES, PAID, WHEN PAID, and REMARKS. Includes handwritten entries for tax amounts and payment dates.

Vertical text on the right edge of the page: Arthur Beach on Island, Chippewa Point, Kabekona Springs, and 1st Add'l to...

Assessment Roll and Tax List of Real Property in the Town of Shingle, Cass County, Minnesota, for Taxes for the Year 1958.

Table with columns: IN WHOSE NAME ASSESSED, TO WHOM TRANSFERRED, DESCRIPTION OF PROPERTY, TRUE AND FULL VALUATIONS, ASSESSED VALUATIONS, VALUATIONS BY SCHOOL DISTRICTS AS EQUALIZED BY DEPARTMENT OF TAXATION, SOLD FOR TAXES, PAID, WHEN PAID, Number of Receipt, March Settlement 1959, June Settlement 1959, Penalty, November Settlement 1959, Penalty, Collections to First Monday in January 1960, Penalty, Delinquent on First Monday in January 1960, Total Delinquent Tax and Penalty, REMARKS.

Assessment Roll and Tax List of Real Property in the Town of Shingobee

Indicate Type of Property: R-Residential, C-Commercial, I-Industrial, U-Utility, F-Farm, L-Lakeshore, T-Timber, M-Mineral

Cass County, Minnesota, for Taxes for the Year 1958.

Table with columns: IN WHOSE NAME ASSESSED, TO WHOM TRANSFERRED, SUBDIVISION, DESCRIPTION OF PROPERTY, TRUE AND FULL VALUATIONS, ASSESSED VALUATIONS, VALUATIONS BY SCHOOL DISTRICTS AS EQUALIZED BY DEPARTMENT OF TAXATION, TAXES, PAID, WHEN PAID, etc.

Shingobee Island

Shingobee Island

Shingobee Island

Shingobee Island

Shingobee Island

Shingobee Island

Shingobee Island

Shingobee Island

Assessment Roll and Tax List of Real Property in the Town of Shingobee

Cass County, Minnesota, for Taxes for the Year 1958.

Form 50 - MINN. REV. STAT., MINNAPOLIS. * Indicate Type of Property: R-Residential, C-Commercial, I-Industrial, U-Utility, F-Farm, L-Lakeshore, T-Timber, M-Mineral

Main table with columns: IN WHOSE NAME ASSESSED, TO WHOM TRANSFERRED, DESCRIPTION OF PROPERTY, TRUE AND FULL VALUATIONS, ASSESSED VALUATIONS, VALUATIONS BY SCHOOL DISTRICTS AS EQUALIZED BY DEPARTMENT OF TAXATION, SOLD FOR TAXES, PAID, WHEN PAID, Number of Receipt, March Settlement 1959, June Settlement 1959, November Settlement 1959, Collections to First Monday in January 1960, Delinquent on First Monday in January 1960, Total Delinquent Tax and Penalty, REMARKS.

Shingobee Island

Fred & Jane Huggatt

Shingobee Island

State of Minnesota L. & M. A. Runyon

Part of Bal of

State of Minnesota

Shingobee Island, Breezy Point, Chippewa Point, Kabokona Springs, Offway, Gumee Beach

Assessment Roll and Tax List of Real Property in the Town of Shingobee

Cass County, Minnesota, for Taxes for the Year 1958.

Form 50 - MINNESOTA COUNTY, MINNESOTA. * Indicate Type of Property: R-Residential, C-Commercial, I-Industrial, U-Utility, F-Farm, L-Lakeshore, T-Timber, M-Mineral

Table with columns: IN WHOSE NAME ASSESSED, TO WHOM TRANSFERRED, DESCRIPTION OF PROPERTY, TRUE AND FULL VALUATIONS, ASSESSED VALUATIONS, and FINAL EQUALIZED VALUE. Includes handwritten entries for Ella Bradenon and property details.

Table with columns: VALUATIONS BY SCHOOL DISTRICTS AS EQUALIZED BY DEPARTMENT OF TAXATION, TAXES, PAID, WHEN PAID, and REMARKS. Includes handwritten entries for tax amounts and payment dates.

Shingobee Island, Chipewa Point, Kabakona Springs

Shingobee Beach, Breezy Point, Crescent Beach 1st, Addy, Gunsee Beach

Assessment Roll and Tax List of Real Property in the Town of Shingobee

Cass County, Minnesota, for Taxes for the Year 1958.

Form 5C - MINN. STATE DEPT. OF REVENUE. Indicate Type of Property: R-Residential, C-Commercial, I-Industrial, U-Utility, F-Farm, L-Lakeshore, T-Timber, M-Mineral

Table with columns: IN WHOSE NAME ASSESSED, TO WHOM TRANSFERRED, DESCRIPTION OF PROPERTY, TRUE AND FULL VALUATIONS, ASSESSED VALUATIONS, VALUATIONS BY SCHOOL DISTRICTS AS EQUALIZED BY DEPARTMENT OF TAXATION, SOLD FOR TAXES, PAID, WHEN PAID, Number of Receipt, March Settlement 1959, June Settlement 1959, November Settlement 1959, Collections to First Monday in January 1960, Delinquent on First Monday in January 1960, Total Delinquent Tax and Penalty, REMARKS.

Shingobee Island, Shingobee Beach, Breezy Point, Chipewawa Point, Crescent Beach, Kabakona Springs, Bell's 1st Add, Gitchie Gumee Beach

Shingobee Island, Shingobee Beach, Breezy Point, Crescent Beach, Kabakona Springs, Bell's 1st Add, Gitchie Gumee Beach

Assessment Roll and Tax List of Real Property in the Town of Shingobee, of Shingobee County, Minnesota

* Indicate Type of Property: R-Residential, C-Commercial, I-Industrial, U-Utility, F-Farm, L-Lakeshore, T-Timber, M-Mineral

Cass County, Minnesota, for Taxes for the Year 1958.

IN WHOSE NAME ASSESSED	TO WHOM TRANSFERRED	SUBDIVISION	Sec. or Lot	Town or Block	Rng.	Number of Acres of Land	TRUE AND FULL VALUATIONS				ASSESSED VALUATIONS						FINAL EQUALIZED VALUE					
							LAND Exclusive of Structures and Improvements	BUILDINGS and Other Structures	MACHINERY Permanently Attached to Real Estate	TOTAL True and Full Value	RURAL		ALL OTHER			MACHINERY Permanently Attached to Real Estate		TOTAL ASSESSED VALUE	Total Assessed Value as Equalized by the Board of Review	Dollars		
DESCRIPTION OF PROPERTY							Indicate Homestead Yes or No	Indicate Agricultural Yes or No	Indicate Type of Property	Homestead Up to \$4,000 20%	Over \$4,000 and Non-Homestead 33 1/3%	Timber Land Class 3e 20%	Homestead Up to \$4,000 25%	Over \$4,000 and Non-Homestead 40%	Permanently Attached to Real Estate 33 1/3%	Dollars	Dollars	Dollars	Dollars	Dollars	Dollars	Dollars
		Oyeloway					119	n	L	60	20				21							
								"	"	60	20				20							
	William J. Hageboeck							"	"	60	20				20							
	William J. Hageboeck																					
	William J. Hageboeck							n	R	61	246 224	307 285	102 95		102 95							

SOLD FOR TAXES	VALUATIONS BY SCHOOL DISTRICTS AS EQUALIZED BY DEPARTMENT OF TAXATION						Tax including State Homestead	State Tax on Non-Homestead	SPECIAL TAXES	TOTAL TAXES	PAID	WHEN PAID	Number of Receipt	March Settlement 1959	June Settlement 1959	Penalty	November Settlement 1959	Penalty	Collections to First Monday in January 1960	Penalty	Delinquent on First Monday in January 1960	Total Delinquent Tax and Penalty	REMARKS
	District No. 119	District No. 119	District No. 119	District No. 119	District No. 119	District No. 119																	

Shingobee Island, Shingobee Beach, Breazy Point, Chippewa Point, Kabeona Springs, Gitchowee Gumbo Beach, Breazy Point, Crescent Beach 1st. Addn, Gitchowee Gumbo Beach, Gitchowee Gumbo Beach

Gitchowee Gumbo Beach, Breazy Point, Crescent Beach 1st. Addn, Gitchowee Gumbo Beach, Gitchowee Gumbo Beach

Assessment Roll and Tax List of Real Property in the Town of Shingobee

Indicate Type of Property: R-Residential, C-Commercial, I-Industrial, U-Utility, F-Farm, L-Lakeshore, T-Timber, M-Mineral

Cass County, Minnesota, for Taxes for the Year 1958.

Table with columns: IN WHOSE NAME ASSESSED, TO WHOM TRANSFERRED, SUBDIVISION, Sec. of Lot, Town or Block, Rng., Number of Acres of Land, TRUE AND FULL VALUATIONS (LAND, BUILDINGS, MACHINERY, TOTAL), ASSESSED VALUATIONS (RURAL, ALL OTHER, MACHINERY, TOTAL), FINAL EQUALIZED VALUE.

Table with columns: SOLD FOR TAXES, VALUATIONS BY SCHOOL DISTRICTS AS EQUALIZED BY DEPARTMENT OF TAXATION, Tax including State Homestead, State Tax on Non-Homestead, SPECIAL TAXES, TOTAL TAXES, PAID, WHEN PAID, Number of Receipt, March Settlement 1959, June Settlement 1959, Penalty, November Settlement 1959, Penalty, Collections to First Monday in January 1960, Penalty, Delinquent on First Monday in January 1960, Total Delinquent Tax and Penalty, REMARKS.

Ball's 1st Add'n to Gitches Gunnes Beach, Kabakona Springs, Chippewa Point, Shingobee Island, 100

Gitches Gunnes Beach, Breezy Point, Crescent Beach 1st Add'n, Wa-Ba-Na-Na-Ray, 100

Assessment Roll and Tax List of Real Property in the Town of Shingobee

Cass County, Minnesota, for Taxes for the Year 1958.

Form 50 - REAL PROPERTY, MINNESOTA - Indicate Type of Property: R-Residential, C-Commercial, I-Industrial, U-Utility, F-Farm, L-Lakeshore, T-Timber, M-Mineral

Table with columns: IN WHOSE NAME ASSESSED, TO WHOM TRANSFERRED, DESCRIPTION OF PROPERTY, TRUE AND FULL VALUATIONS, ASSESSED VALUATIONS, VALUATIONS BY SCHOOL DISTRICTS AS EQUALIZED BY DEPARTMENT OF TAXATION, TAXES, PAID, WHEN PAID, etc.

Ball's 1st Add'n to Gitchee Gumee Beach, Chippewa Point, Shingobee Island, Use B

Gitchee Gumee Beach, Breezy Point, Crescent Beach 1st Add'n, Wa-Ba-Me-Me-Ray, Use Hel

Assessment Roll and Tax List of Real Property in the Town of Shingobee

Indicate Type of Property: R-Residential, C-Commercial, I-Industrial, U-Utility, F-Farm, L-Lakeshore, T-Timber, M-Mineral

Cass County, Minnesota, for Taxes for the Year 1958.

Table with columns: IN WHOSE NAME ASSESSED, TO WHOM TRANSFERRED, DESCRIPTION OF PROPERTY, TRUE AND FULL VALUATIONS, ASSESSED VALUATIONS, VALUATIONS BY SCHOOL DISTRICTS AS EQUALIZED BY DEPARTMENT OF TAXATION, SOLD FOR TAXES, PAID, WHEN PAID, Number of Receipt, March Settlement 1959, June Settlement 1959, November Settlement 1959, Collections to First Monday in January 1960, Delinquent on First Monday in January 1960, Total Delinquent Tax and Penalty, REMARKS.

Ball's Island to Gitchee Gumee Beach, Chippewa Point, Kabecona Springs, Shingobee, Gitchee Gumee Beach

Chariton Beach, Breezy Point, Crescent Beach 1st. Addn, sa Heighs

Assessment Roll and Tax List of Real Property in the Town of Shingle

Form 30 ... Indicate Type of Property: R-Residential, C-Commercial, I-Industrial, U-Utility, F-Farm, L-Lakeshore, T-Timber, M-Mineral

Table with columns: IN WHOSE NAME ASSESSED, TO WHOM TRANSFERRED, SUBDIVISION, DESCRIPTION OF PROPERTY, TRUE AND FULL VALUATIONS, ASSESSED VALUATIONS, FINAL EQUALIZED VALUE. Includes handwritten entries for property owners like 'Vern S. + Mae M. Christy' and 'Raymond + Josephine Hedlucha'.

Cass County, Minnesota, for Taxes for the Year 1958.

Table with columns: VALUATIONS BY SCHOOL DISTRICTS AS EQUALIZED BY DEPARTMENT OF TAXATION, TAXES, PAID, WHEN PAID, Number of Receipt, March Settlement 1959, June Settlement 1959, November Settlement 1959, Collections to First Monday in January 1960, Delinquent on First Monday in January 1960, Total Delinquent Tax and Penalty, REMARKS. Includes handwritten entries for tax amounts and payment dates.

Assessment Roll and Tax List of Real Property in the Town of Shingobe, Cass County, Minnesota, for Taxes for the Year 1958.

Form 30 - Indicate Type of Property: R-Residential, C-Commercial, I-Industrial, U-Utility, F-Farm, L-Lakeshore, T-Timber, M-Mineral

Table with columns: IN WHOSE NAME ASSESSED, TO WHOM TRANSFERRED, SUBDIVISION, TRUE AND FULL VALUATIONS (LAND, BUILDINGS, MACHINERY, RURAL, ALL OTHER), ASSESSED VALUATIONS (RURAL, ALL OTHER), and FINAL EQUALIZED VALUE.

Table with columns: SOLD FOR TAXES, VALUATIONS BY SCHOOL DISTRICTS AS EQUALIZED BY DEPARTMENT OF TAXATION, SPECIAL TAXES, TOTAL TAXES, PAID, WHEN PAID, Number of Receipt, March Settlement 1959, June Settlement 1959, Penalty, November Settlement 1959, Collections to First Monday in January 1960, Delinquent on First Monday in January 1960, Total Delinquent Tax and Penalty, REMARKS.

Assessment Roll and Tax List of Real Property in the Town of *Shingle*

Form 50

* Indicate Type of Property: R-Residential, C-Commercial, I-Industrial, U-Utility, F-Farm, L-Lakeshore, T-Timber, M-Mineral

Cass County, Minnesota, for Taxes for the Year 1958.

Table with multiple columns: IN WHOSE NAME ASSESSED, TO WHOM TRANSFERRED, SUBDIVISION, TRUE AND FULL VALUATIONS, ASSESSED VALUATIONS, VALUATIONS BY SCHOOL DISTRICTS, TAXES, PAID, WHEN PAID, etc.

Vertical text on the left margin: Gitchee Gum, Crescent Beach, Chippewa Falls, Kabecona Springs, Ball's 1st Add'n to Gitchee Gum...

Vertical text on the right margin: Gitchee Gum, Crescent Beach, Snokoy's Addition to Walker, Crescent Beach 1st Add'n, Ball's 1st Add'n to Gitchee Gum...

Assessment Roll and Tax List of Real Property in the Town of Shingabe

* Indicate Type of Property: R-Residential, C-Commercial, I-Industrial, U-Utility, F-Farm, L-Lakeshore, T-Timber, M-Mineral

Cass County, Minnesota, for Taxes for the Year 1958.

Table with columns: IN WHOSE NAME ASSESSED, TO WHOM TRANSFERRED, DESCRIPTION OF PROPERTY, TRUE AND FULL VALUATIONS, ASSESSED VALUATIONS, VALUATIONS BY SCHOOL DISTRICTS AS EQUALIZED BY DEPARTMENT OF TAXATION, SOLD FOR TAXES, PAID, WHEN PAID, Number of Receipts, March Settlement 1959, June Settlement 1959, November Settlement 1959, Collections to First Monday in January 1960, Delinquent on First Monday in January 1960, Total Delinquent Tax and Penalty, REMARKS.

Ball's 1st Add'n to Gitchee Gumers Beach, Chippewa Falls, Crescent Beach, Kabekona Springs, Gitchee Gumers Beach

Chippewa Falls, Crescent Beach, Snokoy's Addition to Walker, Crescent Beach 1st Add'n, Ma-Ba-Na-Na-Ray, Cass Heights

Assessment Roll and Tax List of Real Property in the Town of Shingle Creek

Indicate Type of Property: R-Residential, C-Commercial, I-Industrial, U-Utility, F-Farm, L-Lakeshore, T-Timber, M-Mineral

Form 30 - BUILT-UPON COUNTY, MINNESOTA

Cass County, Minnesota, for Taxes for the Year 1958.

Ball's 1st Add'n to Gitchee Gumee Beach
Kabeck
Crescent Beach 1st Add'n
Crescent Beach
Gitchee Gumee Beach

Table with columns: IN WHOSE NAME ASSESSED, TO WHOM TRANSFERRED, SUBDIVISION, Description of Property, TRUE AND FULL VALUATIONS, ASSESSED VALUATIONS, and FINAL EQUALIZED VALUE.

Table with columns: SOLD FOR TAXES, VALUATIONS BY SCHOOL DISTRICTS AS EQUALIZED BY DEPARTMENT OF TAXATION, SPECIAL TAXES, TOTAL TAXES, PAID, WHEN PAID, and REMARKS.

Shingle Creek
Stokely's Addition
to Walker
Ford's 1st Add'n
to Shingle Creek
1st W-B-R-M-R-Ray
Hsg Heights

Assessment Roll and Tax List of Real Property in the Town of Shingobee

Indicate Type of Property: R-Residential, C-Commercial, I-Industrial, U-Utility, F-Farm, L-Lakeshore, T-Timber, M-Mineral

Cass County, Minnesota, for Taxes for the Year 1958.

Table with columns: IN WHOSE NAME ASSESSED, TO WHOM TRANSFERRED, DESCRIPTION OF PROPERTY, TRUE AND FULL VALUATIONS, ASSESSED VALUATIONS, VALUATIONS BY SCHOOL DISTRICTS AS EQUALIZED BY DEPARTMENT OF TAXATION, TAXES, PAID, WHEN PAID, Number of Receipt, March Settlement 1959, June Settlement 1959, Penalty, November Settlement 1959, Collections to First Monday in January 1960, Delinquent on First Monday in January 1960, Total Delinquent Tax and Penalty, REMARKS.

Ball's 1st Addn to Sunrise Heights Ba-Me-Ne-Ray Crescent Beach 1st Addn. Pos Crescent Beach Gichee Crescent Beach

Hanson's Point Park Point of Shingobee Island Lord's 1st Addn to of Shingobee Island Smokey's Addition to Walker

Handwritten names: A.N. Meland, George & Patricia Engalberg, Edward Anderson, George & Patricia Engalberg, Dick Muller, Elvora Wise, Elvora Wise

Handwritten notes: Sunrise Heights, 3 1/2 acs. of Lot 147 May 26 1923, July 2 of

Table with columns: No. School District, Indicate Homestead Yes or No, Indicate Agricultural Yes or No, Indicate Type of Property, LAND Exclusive of Structures and Improvements, BUILDINGS and Other Structures, MACHINERY Permanently Attached to Real Estate, TOTAL True and Full Value, RURAL (Homestead Up to \$4,000 20%, Over \$4,000 and Non-Homestead 33 1/3%), ALL OTHER (Timber Land Class 3c 20%, Homestead Up to \$4,000 25%, Over \$4,000 and Non-Homestead 40%), MACHINERY Permanently Attached to Real Estate 33 1/3%, TOTAL ASSESSED VALUE, Total Assessed Value as Equalized by the Board of Review, FINAL EQUALIZED VALUE

Table with columns: SOLD FOR TAXES, District No., District No., District No., District No., District No., District No., Tax including State Homestead, State Tax on Non-Homestead, SPECIAL TAXES, TOTAL TAXES, PAID, WHEN PAID, Number of Receipt, March Settlement 1959, June Settlement 1959, Penalty, November Settlement 1959, Collections to First Monday in January 1960, Delinquent on First Monday in January 1960, Total Delinquent Tax and Penalty, REMARKS

Indicate Type of Property: R-Residential, C-Commercial, I-Industrial, U-Utility, F-Farm, L-Lakeshore, T-Timber, M-Mineral

IN WHOSE NAME ASSESSED	TO WHOM TRANSFERRED	DESCRIPTION OF PROPERTY					TRUE AND FULL VALUATIONS										FINAL EQUALIZED VALUE						
		SUBDIVISION	Sec. or Lot	Town or Block	Rng.	Number of Acres of Land Acres 100ths	No. School District	Indicate Homestead Yes or No	Indicate Agricultural Yes or No	Indicate Type of Property	BUILDINGS and Other Structures			TOTAL True and Full Value	RURAL				MACHINERY Permanently Attached to Real Estate	TOTAL ASSESSED VALUE	Total Assessed Value as Equalized by the Board of Review		
											Dollars	Dollars	Dollars		Dollars	Dollars		Dollars				Dollars	Dollars
Holding A. & Jeanette Johnson		<i>Sunrise Heights</i>	17			#119	400	00	R	60	1265	1325	265	1210	242	365	242						
"	"		18			"	"		T	60		60	12			12							
"	"		19			"	"		"	60		60	12			12							
"	"		20			"	"		"	60		60	12			12							

SOLD FOR TAXES	VALUATIONS BY SCHOOL DISTRICTS AS EQUALIZED BY DEPARTMENT OF TAXATION						Tax including State Homestead	State Tax on Non-Homestead	SPECIAL TAXES	TOTAL TAXES	PAID	WHEN PAID	Number of Receipt	March Settlement 1959	June Settlement 1959	Penalty	November Settlement 1959	Penalty	Collections to First Monday in January 1960	Penalty	Delinquent on First Monday in January 1960	Total Delinquent Tax and Penalty	REMARKS
	District No.	District No.	District No.	District No.	District No.	District No.																	
	Rate	Rate	Rate	Rate	Rate	Rate																	
	19																						
											APR 24 1959												

Ball's 1st Addn. to
Sunrise Heights
Ba-Na-Me-Ray
Crescent Beach 1st Addn.
Crescent Beach
Gitchie Gum
Beach

Charlton Beach
Smoke's Addition to Walker
Ford's 1st Addn. to
of Shingobee Island
Park Point
Hanson's Point

Assessment Roll and Tax List of Real Property in the Town of Shingler

Indicate Type of Property: R-Residential, C-Commercial, I-Industrial, U-Utility, F-Farm, L-Lakeshore, T-Timber, M-Mineral

Cass County, Minnesota, for Taxes for the Year 1958.

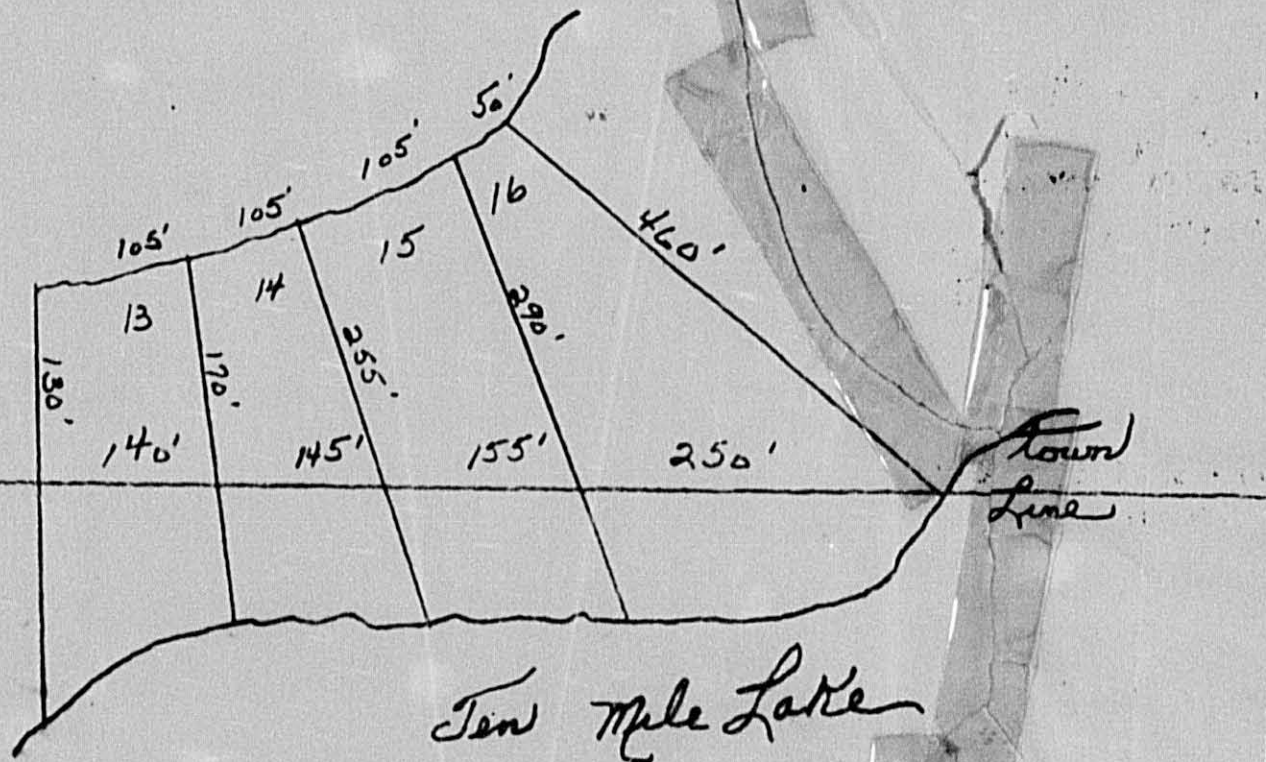
Table with columns: IN WHOSE NAME ASSESSED, TO WHOM TRANSFERRED, SUBDIVISION, DESCRIPTION OF PROPERTY, TRUE AND FULL VALUATIONS, ASSESSED VALUATIONS, VALUATIONS BY SCHOOL DISTRICTS AS EQUALIZED BY DEPARTMENT OF TAXATION, SOLD FOR TAXES, PAID, WHEN PAID, Number of Receipt, March Settlement 1959, June Settlement 1959, Penalty, Collections to First Monday in January 1960, Delinquent on First Monday in January 1960, Total Delinquent Tax and Penalty, REMARKS.

Ball's 1st Addn to Sunrise Heights Ba-Ja-Ne-Lay Prescent Beach 1st Addn. Pool Beach Chariton Beach

Stady Lane Smokeys Addition to Walker Ford's 1st Addn to Shingobee Island Park Point Hanson's Point

Shingbee Twp
Hiram Twp

Shingbee Twp
1957



Lots 13-14-15-16

Chariton Beach

Assessment Roll and Tax List of Real Property in the Town of Shingobee of Minnesota

Cass County, Minnesota, for Taxes for the Year 1958.

Form 308 ILLINOIS-STATE UNIVERSITY, URBANA, ILLINOIS. * Indicate Type of Property: R-Residential, C-Commercial, I-Industrial, U-Utility, F-Farm, L-Lakeshore, T-Timber, M-Mineral

Table with columns: IN WHOSE NAME ASSESSED, TO WHOM TRANSFERRED, SUBDIVISION, Sec. or Lot, Town or Block, Reg., Number of Acres of Land, No. School District, Indicate Homestead, Indicate Agricultural, Indicate Type of Property, TRUE AND FULL VALUATIONS (LAND, BUILDINGS, MACHINERY, TOTAL), ASSESSED VALUATIONS (RURAL, ALL OTHER, MACHINERY, TOTAL ASSESSED), FINAL EQUALIZED VALUE.

Table with columns: SOLD FOR TAXES, VALUATIONS BY SCHOOL DISTRICTS AS EQUALIZED BY DEPARTMENT OF TAXATION, Tax including State Homestead, State Tax on Non-Homestead, SPECIAL TAXES, TOTAL TAXES, PAID, WHEN PAID, Number of Receipt, March Settlement, June Settlement, Penalty, November Settlement, Penalty, Collections to First Monday in January, Delinquent on First Monday in January, Total Delinquent Tax and Penalty, REMARKS.

Chariton, Smokey's Addition to Walker, Crescent Beach 1st Addn, Sunrise Heights, Ballis 1st Addn, Park Point, Hanson's Point

Shady Lane, Earlford's 1st Addn to Plat of Shingobee Island, Park Point, Hanson's Point

Assessment Roll and Tax List of Real Property in the Town of Shingobee

Form 9C Indicate Type of Property: R-Residential, C-Commercial, I-Industrial, U-Utility, F-Farm, L-Lakeshore, T-Timber, M-Mineral

Cass County, Minnesota, for Taxes for the Year 1958.

Table with columns: IN WHOSE NAME ASSESSED, TO WHOM TRANSFERRED, DESCRIPTION OF PROPERTY, TRUE AND FULL VALUATIONS, ASSESSED VALUATIONS, VALUATIONS BY SCHOOL DISTRICTS AS EQUALIZED BY DEPARTMENT OF TAXATION, SOLD FOR TAXES, PAID, WHEN PAID, Number of Receipt, March Settlement 1959, June Settlement 1959, Penalty, November Settlement 1959, Penalty, Collections to First Monday in January 1960, Penalty, Delinquent on First Monday in January 1960, Total Delinquent Tax and Penalty, REMARKS.

Vertical text on the left edge: Belford's 1st Add'n to Bkry's Addition, Belford's 1st Add'n to Shingobee Island, Belford's 1st Add'n to Bkry's Addition, Belford's 1st Add'n to Shingobee Island, Belford's 1st Add'n to Bkry's Addition, Belford's 1st Add'n to Shingobee Island, Belford's 1st Add'n to Bkry's Addition, Belford's 1st Add'n to Shingobee Island, Belford's 1st Add'n to Bkry's Addition, Belford's 1st Add'n to Shingobee Island.

Vertical text on the right edge: Shady Lane, Park Point, Hanson's Point.

Assessment Roll and Tax List of Real Property in the Town of Shingobee

Indicate Type of Property: R-Residential, C-Commercial, I-Industrial, U-Utility, F-Farm, L-Lakeshore, T-Timber, M-Mineral

Table with columns: IN WHOSE NAME ASSESSED, TO WHOM TRANSFERRED, SUBDIVISION, DESCRIPTION OF PROPERTY, TRUE AND FULL VALUATIONS, ASSESSED VALUATIONS, and FINAL EQUALIZED VALUE. Includes handwritten entries for Clarence J. & Sadie B. Ehrenpeter, Stephen, Leonard & Arthur H. Gruber, etc.

Cass County, Minnesota, for Taxes for the Year 1958.

Table with columns: SOLD FOR TAXES, VALUATIONS BY SCHOOL DISTRICTS AS EQUALIZED BY DEPARTMENT OF TAXATION, SPECIAL TAXES, TOTAL TAXES, PAID, WHEN PAID, Number of Receipt, March Settlement 1959, June Settlement 1959, November Settlement 1959, Collections to First Monday in January 1960, Delinquent on First Monday in January 1960, Total Delinquent Tax and Penalty, and REMARKS. Includes handwritten entries for Abale # 7716 and various tax payment dates.

Charito Beach, Helford's 1st Add'n to Hwy's Addition, Plat of Shingobee Island to Walker, Ball Lake, Sunrise Heights, park point

Shady Lane, Johnson's Point

Assessment Roll and Tax List of Real Property in the Town of Shingobee

Form 5C

Indicate Type of Property: R-Residential, C-Commercial, I-Industrial, U-Utility, F-Farm, L-Lakeshore, T-Timber, M-Mineral

Cass County, Minnesota, for Taxes for the Year 1958.

Chariton B... Bellford's 1st Add'n to Pkay's Addition... Plat of Shingobee Island to Walker... Park Point... Sunrise Heights by... Ball...

Table with columns: IN WHOSE NAME ASSESSED, TO WHOM TRANSFERRED, SUBDIVISION, DESCRIPTION OF PROPERTY, TRUE AND FULL VALUATIONS, ASSESSED VALUATIONS, FINAL EQUALIZED VALUE.

Table with columns: VALUATIONS BY SCHOOL DISTRICTS AS EQUALIZED BY DEPARTMENT OF TAXATION, SOLD FOR TAXES, SPECIAL TAXES, TOTAL TAXES, PAID, WHEN PAID, Number of Receipt, March Settlement 1959, June Settlement 1959, Penalty, Collections to First Monday in January 1960, Delinquent on First Monday in January 1960, Total Delinquent Tax and Penalty, REMARKS.

Shady Lane

Hanson's Point

Assessment Roll and Tax List of Real Property in the Town of Shingobee

Cass County, Minnesota, for Taxes for the Year 1958.

Form 50 - ILLINOIS STATE BOARD OF TAXATION, SPRINGFIELD, ILL. * Indicate Type of Property: R-Residential, C-Commercial, I-Industrial, U-Utility, F-Farm, L-Lakeshore, T-Timber, M-Mineral

Table with columns: IN WHOSE NAME ASSESSED, TO WHOM TRANSFERRED, DESCRIPTION OF PROPERTY, TRUE AND FULL VALUATIONS, ASSESSED VALUATIONS, FINAL EQUALIZED VALUE.

Table with columns: VALUATIONS BY SCHOOL DISTRICTS AS EQUALIZED BY DEPARTMENT OF TAXATION, SOLD FOR TAXES, SPECIAL TAXES, TOTAL TAXES, PAID, WHEN PAID, Number of Receipt, March Settlement 1959, June Settlement 1959, November Settlement 1959, Collections to First Monday in January 1960, Delinquent on First Monday in January 1960, Total Delinquent Tax and Penalty, REMARKS.

Chariton B... Bellford's 1st Add'n to Key's Addition... Plat of Shingobee Island to Walker... Park Point... Sunrise Heights... Ball...

Edy Lane... Hanson's Point

Assessment Roll and Tax List of Real Property in the Town of Shingobee

Indicate Type of Property: R-Residential, C-Commercial, I-Industrial, U-Utility, F-Farm, L-Lakeshore, T-Timber, M-Mineral

Cass County, Minnesota, for Taxes for the Year 1958.

Charlton B... Belford's 1st Add'n to... Plat of Shingobee Island to Walker... Park Point... Park Point... Hanson's Point

Table with columns: IN WHOSE NAME ASSESSED, TO WHOM TRANSFERRED, SUBDIVISION, Sec. or Lot, Town or Block, Reg., Number of Acres of Land, No. School District, Indicate Homestead Yes or No, Indicate Agricultural Yes or No, Indicate Type of Property, TRUE AND FULL VALUATIONS (LAND, BUILDINGS, MACHINERY, TOTAL), ASSESSED VALUATIONS (RURAL, ALL OTHER, MACHINERY, TOTAL ASSESSED), Total Assessed Value as Equalized by the Board of Review, FINAL EQUALIZED VALUE.

Table with columns: SOLD FOR TAXES, VALUATIONS BY SCHOOL DISTRICTS AS EQUALIZED BY DEPARTMENT OF TAXATION, Tax Including State Homestead, State Tax on Non-Homestead, SPECIAL TAXES, TOTAL TAXES, PAID, WHEN PAID, Number of Receipt, March Settlement 1959, June Settlement 1959, Penalty, November Settlement 1959, Collections to First Monday in January 1960, Delinquent on First Monday in January 1960, Total Delinquent Tax and Penalty, REMARKS.

Study Lane

Personal

Assessment Roll and Tax List of Real Property in the Town of Shingobee

Cass County, Minnesota, for Taxes for the Year 1958.

Form 50 - Indicate Type of Property: R-Residential, C-Commercial, I-Industrial, U-Utility, F-Farm, L-Lakeshore, T-Timber, M-Mineral

Table with columns: IN WHOSE NAME ASSESSED, TO WHOM TRANSFERRED, SUBDIVISION, Sec. or Lot, Town or Block, Reg., Number of Acres of Land, No. School District, Indicate Homestead, Indicate Agricultural, Indicate Type of Property, TRU AND FULL VALUATIONS (LAND, BUILDINGS, MACHINERY, TOTAL), ASSESSED VALUATIONS (RURAL, ALL OTHER), TOTAL ASSESSED VALUE, Total Assessed Value as Equalized by the Board of Review, FINAL EQUALIZED VALUE.

Table with columns: SOLD FOR TAXES, VALUATIONS BY SCHOOL DISTRICTS AS EQUALIZED BY DEPARTMENT OF TAXATION (District No., Rate, etc.), Tax including State Homestead, State Tax on Non-Homestead, SPECIAL TAXES, TOTAL TAXES, PAID, WHEN PAID, Number of Receipt, March Settlement, June Settlement, Penalty, November Settlement, Collections to First Monday in January, Delinquent on First Monday in January, Total Delinquent Tax and Penalty, REMARKS.

Shady Lane, Belford's 1st Add'n to Plat of Shingobee Island to Walker, Park Point, Hanson Point

Personal

Assessment Roll and Tax List of Real Property in the Town of Shingobee

Cass County, Minnesota, for Taxes for the Year 1958.

Form 5C MINNESOTA COUNTY, MINNESOTA. Indicate Type of Property: R-Residential, C-Commercial, I-Industrial, U-Utility, F-Farm, L-Lakeshore, T-Timber, M-Mineral

Shady Lane, Belford's 1st Add'n to Key's Addition, Plat of Shingobee Island to Walker, Park Point, Park Point, Park Point, Park Point, Park Point

Table with columns: IN WHOSE NAME ASSESSED, TO WHOM TRANSFERRED, DESCRIPTION OF PROPERTY, TRUE AND FULL VALUATIONS, ASSESSED VALUATIONS, VALUATIONS BY SCHOOL DISTRICTS AS EQUALIZED BY DEPARTMENT OF TAXATION, SOLD FOR TAXES, SPECIAL TAXES, TOTAL TAXES, PAID, WHEN PAID, Number of Receipt, March Settlement 1959, June Settlement 1959, November Settlement 1959, Penalty, Collections to First Monday in January 1960, Delinquent on First Monday in January 1960, Total Delinquent Tax and Penalty, REMARKS.

Personal