

ASSESSMENT & TAX LIST - 1957

Shingobee

Assessment of

COLLECTIONS OF TAXES OF 195

Town OF *Shingobee*, CASS COUNTY, MINNESOTA

NAME OF OWNER	FUNDS	MARCH SETTLEMENT	JUNE SETTLEMENT	NOV. SETTLEMENT	Amount Collected from Nov. 15 to First Monday in Jan. 195	REDUCTIONS	Total Reductions and Collected	BALANCE UNCOLLECTED	ADDITIONS	Total Uncollected to First Monday in January, 195
		195	195	195						
	State-Non-Homestead,	174.81	410.93	125.84	582					
	State-Homestead,	166.84	537.20	190.26	1134					
	County Revenue,	848.80	2733.38	968.07	5768					
	County Road and Bridge,	416.39	1340.77	474.85	2829					
	County Welfare,	1308.86	4214.48	1492.63	8893					
	County Bond and Interest,	120.20	387.04	137.07	517					
	Well. Def.	78.00	251.18	88.96	531					
	R. & B. Fed. Proj.	138.80	446.92	158.28	943					
	P.B.R.	81.33	261.91	92.76	552					
	Town Revenue,	83.27	268.15	94.97	565					
	Town Road and Bridge,	333.12	1072.62	379.89	2263					
	Town Drag,	27.76	89.38	31.66	189					
	Town State Loan, <i>Ind. Agric.</i>	13.88	44.70	15.83	94					
	<i>Co. Nurse.</i>	55.53	178.77	63.32	377					
	<i>Fire.</i>	69.40	223.47	79.14	472					
	<i>Phone.</i>	69.40	223.47	79.14	472					
	<i>Cemetery.</i>	27.76	89.37	31.66	189					
	R. & B. Fed. Proj.	55.53	178.77	63.32	377					
	School Local 1 Mill,	27.76	89.38	31.66	189					
	School Special,	1270.64	2638.16	1393.86	5382					
	School State Loan,									
	Deficiency	710.65	2288.25	810.42	4828					
	Tuition									
	Transportation	28.31	91.17	32.29	192					
	<i>L.O.</i>	768.95	2475.96	876.90	5224					
	<i>B. & L.</i>	263.71	849.16	300.75	1793					
		7139.99	21984.59	8013.53	44655					

MARCH SETTLEMENT	SCHOOL DISTRICT NO.	LOCAL 1 MILL	SPECIAL	STATE LOAN	<i>Loc.</i>	<i>Transp.</i>	<i>L.O.</i>	<i>B. & L.</i>	TOTALS
	School District No. 119-a	469	117.34		120.16	479	130.02	44.58	421.58
	119-Ma	2307	1153.30		590.49	2352	638.93	219.13	2648.44
	Totals	2776	1270.64		710.65	2831	768.95	263.71	3170.02
	School District No. 119-a	7324	1831.08		1875.02	7471	2028.83	695.81	6578.69
	119-Ma	1614	807.08		413.23	1646	447.13	153.35	1853.59
	Totals	8938	2638.16		2288.25	9117	2475.96	849.16	8432.08
	School District No. 119-a	756	188.99		193.53	771	209.40	71.82	679.01
	119-Ma	2410	1204.87		616.89	2458	667.50	228.93	2766.87
	Totals	3166	1393.86		810.42	3229	876.90	300.75	3455.88
	School District No. 119-a	162	40.48		41.45	165	44.85	15.39	145.44
	119-Ma	27	13.34		6.83	27	7.39	2.54	30.64
	Totals	189	53.82		48.28	192	52.24	17.93	176.08
	School District No.								
	Totals								
	School District No.								
	Totals								
	School District No.								
	Totals								

Shingobee Island
 Chippewa Point
 Kabokona Springs
 Oilway

Assessment Roll and Tax List of Real Property in the Town of Shingobee

Cass County, Minnesota, for Taxes for the Year 1957.

Indicate Type of Property: R-Residential, C-Commercial, I-Industrial, U-Utility, F-Farm, L-Lakeshore, T-Timber, M-Mineral

Table with columns: IN WHOSE NAME ASSESSED, TO WHOM TRANSFERRED, DESCRIPTION OF PROPERTY, TRUE AND FULL VALUATIONS, ASSESSED VALUATIONS, VALUATIONS BY SCHOOL DISTRICTS AS EQUALIZED BY DEPARTMENT OF TAXATION, TAX INCLUDING STATE HOMESTEAD, SPECIAL TAXES, TOTAL TAXES, PAID, WHEN PAID, Number of Receipt, March Settlement 1958, June Settlement 1958, November Settlement 1958, Collections to First Monday in January 1959, Delinquent on First Monday in January 1959, Total Delinquent Tax and Penalty, REMARKS.

141-31

Shingobee Island, Chipewa Point, Kabekona Springs, Ojibway

Assessment Roll and Tax List of Real Property in the Town of Shingobee

* Indicate Type of Property: R-Residential, C-Commercial, I-Industrial, U-Utility, F-Farm, L-Lakeshore, T-Timber, M-Mineral

Cass County, Minnesota, for Taxes for the Year 1957.

IN WHOSE NAME ASSESSED	TO WHOM TRANSFERRED	DESCRIPTION OF PROPERTY					TRUE AND FULL VALUATIONS										FINAL EQUALIZED VALUE			
		SUBDIVISION	Sec. or Lot	Town or Block	Reg.	Number of Acres of Land	No. School District	Indicate Homestead Yes or No	Indicate Agricultural Yes or No	Indicate Type of Property	RURAL			ALL OTHER				MACHINERY Permanently Attached to Real Estate	TOTAL ASSESSED VALUE	Total Assessed Value as Equalized by the Board of Review
											LAND Exclusive of Structures and Improvements	BUILDINGS and Other Structures	MACHINERY Permanently Attached to Real Estate	Homestead Up to \$4,000 20%	Over \$4,000 and Non-Homestead 33 1/3%	Timber Land Class 3e 20%				
Evan H. Peterson		NE 1/4 of NE 1/4	3	14131	3983	5			T											
"		NW 1/4 of NE 1/4			3997				"											
"		SW 1/4 of NE 1/4			40				"											
"		SE 1/4 of NE 1/4			40				"											
"																				
"		NE 1/4 of NW 1/4			40				"											
Gerald O. & Grace Tissue		Lot 4 + SW 1/4 of NW 1/4 less 5 acs. W. of St. Rd. #19 less 2.5 acs.			72.75				"											
"		SW 1/4 of NW 1/4							"											
Evan H. Peterson		SE 1/4 of NW 1/4			40				"											
"		Lot 4 + SW 1/4 of NW 1/4 lying E. of old St. Rd. #19			5				"											
"		NE 1/4 of SW 1/4			40				"											
"		NW 1/4 of SW 1/4			40				"											
U. S. of America		SW 1/4 of SW 1/4							"											
Florence & Ray Lewis		SE 1/4 of SW 1/4			40				"											
Ethel S. Peterson & Helen Olson		2.5 acs. of SW 1/4 of NW 1/4			2.50				"											
Evan H. Peterson		NE 1/4 of SE 1/4			40				"											
"		NW 1/4 of SE 1/4			40				"											
Florence & Ray Lewis		SW 1/4 of SE 1/4			40				"											
J. J. & Evelyn F. Buckley		SE 1/4 of SE 1/4			40				"											
					600.16															

SOLD FOR TAXES	VALUATIONS BY SCHOOL DISTRICTS AS EQUALIZED BY DEPARTMENT OF TAXATION						Tax including State Homestead	State Tax on Homestead	SPECIAL TAXES	TOTAL TAXES	PAID	WHEN PAID	Number of Receipt	March Settlement 1958	June Settlement 1958	Penalty	November Settlement 1958	Penalty	Collections to First Monday in January 1959	Penalty	Delinquent on First Monday in January 1959	Total Delinquent Tax and Penalty	REMARKS
	District No.	District No.	District No.	District No.	District No.	District No.																	
	Rate	Rate	Rate	Rate	Rate	Rate																	
	District No. 19	District No. 19	District No. 19	District No. 19	District No. 19	District No. 19	6.1 Mills																
1									1230	1196	34	1st HALF PAID MAY 31 1958		615						615	676	7569	
2									1704	1656	48	1st HALF PAID MAY 31 1958	3632	852						852	937	"	
3									1230	1196	34	1st HALF PAID MAY 31 1958		615						615	676	7569	
4									1230	1196	34	1st HALF PAID MAY 31 1958		615						615	676	"	
5																							
6									1894	1842	52	1st HALF PAID MAY 31 1958	3632	947						947	1042	"	
7									7316	7112	204	2nd HALF PAID OCT 1 1958	14584	3658			3658					4825	
8																							
9									2438	2370	68	1st HALF PAID MAY 31 1958		1219						1219	1341	7569	
10									308	300	08	1st HALF PAID MAY 31 1958	3632	154						154	169	"	
11									2438	2370	68	1st HALF PAID MAY 31 1958		1219						1219	1341	7569	
12									1964	1910	54	1st HALF PAID MAY 31 1958		982						982	1080	"	
13																							
14	SOLD FOR TAXES								1104	1104	00	1st HALF PAID MAY 31 1958	13540	552						552	4823	"	
15									120	116	04	2nd Half Paid OCT 31 1958	17523	60			60					4826	
16									1634	1588	46	1st HALF PAID MAY 31 1958	3632	277						277	13578	1493	7569
17									1704	1656	48	1st HALF PAID MAY 31 1958		300						300	14048	1544	"
18	SOLD FOR TAXES								3982	3982	00	1st HALF PAID MAY 31 1958	13540	1991						1991	4823	"	
19									1586	1542	44	2nd HALF PAID OCT 31 1958	18058	793			793					4759	
20																							
									31136	31136	746			31882	14849			4511		12522			

141-31

Shingobee Island Chippewa Point Kabekona Springs Oilway

Assessment Roll and Tax List of Real Property in the Town of Shingobee

Cass County, Minnesota, for Taxes for the Year 1957.

* Indicate Type of Property: R-Residential, C-Commercial, I-Industrial, U-Utility, F-Farm, L-Lakeshore, T-Timber, M-Mineral

Table with columns: IN WHOSE NAME ASSESSED, TO WHOM TRANSFERRED, DESCRIPTION OF PROPERTY, TRUE AND FULL VALUATIONS, ASSESSED VALUATIONS, VALUATIONS BY SCHOOL DISTRICTS AS EQUALIZED BY DEPARTMENT OF TAXATION, TAX INCLUDING STATE HOMESTEAD, STATE TAX ON NON-HOMESTEAD, SPECIAL TAXES, TOTAL TAXES, PAID, WHEN PAID, Number of Receipt, March Settlement 1958, June Settlement 1958, November Settlement 1958, Penalty, Collections to First Monday in January 1959, Delinquent on First Monday in January 1959, Total Delinquent Tax and Penalty, REMARKS.

141-31

Shingobee Beach, Shingobee Island, Chipewa Point, Kabekona Springs, Oilway

Assessment Roll and Tax List of Real Property in the Town of Shingobee

Cass County, Minnesota, for Taxes for the Year 1957.

Form 501 (56) JULY 1956 EDITION, MINNESOTA. Indicate Type of Property: R-Residential, C-Commercial, I-Industrial, U-Utility, F-Farm, L-Lakeshore, T-Timber, M-Mineral

Table with columns: IN WHOSE NAME ASSESSED, TO WHOM TRANSFERRED, DESCRIPTION OF PROPERTY, TRUE AND FULL VALUATIONS, ASSESSED VALUATIONS, VALUATIONS BY SCHOOL DISTRICTS AS EQUALIZED BY DEPARTMENT OF TAXATION, TAXES, PAID, WHEN PAID, etc.

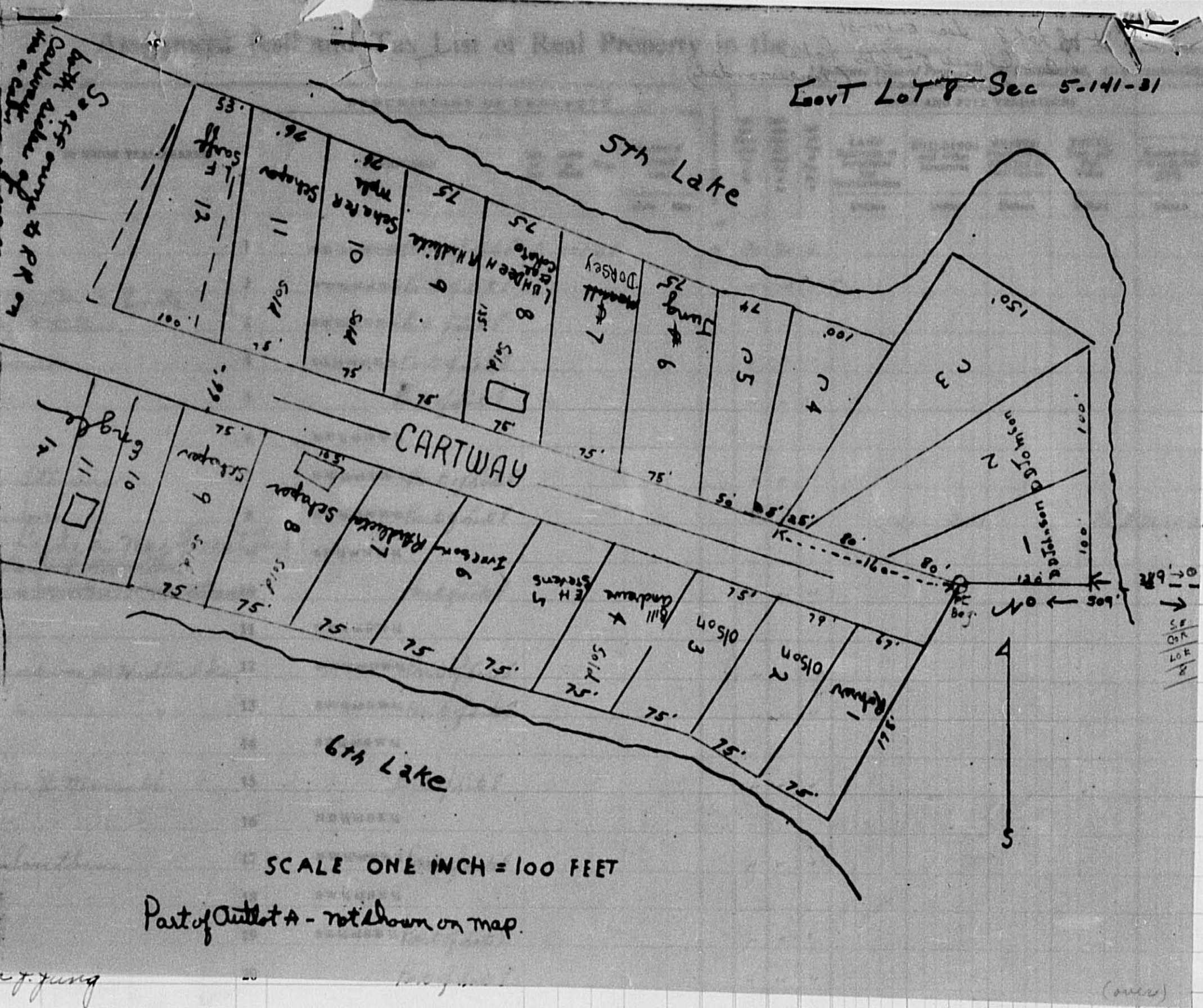
141-31

Shingobee Island, Chippewa Point, Kabecona Springs, Otway

Form SCD (56) DILLI-SILVER COMPANY, MINN.

IN WHOSE NAME ASSESSED

John S. Olson
 W. H. Schaper
 Melvin Edgson
 Louis H. Rose
 G. A. & Hannah S.
 Eric Bohner
 Earl H. & Regina
 Donald D. Joh
 Lawrence M.
 Donald A. Young
 Gordon S. Mattie
 Raymond H. & Jo
 William F. & Al
 J. J. & Violet
 Lewis F. Sarg
 Henry G. & Lona J. Jung



I-Industrial, U-Utility, F-Farm, L-Lakeshore, T-Timber, M-Mineral

ASSESSED VALUATIONS							Total Assessed Value as Equalized by the Board of Review	FINAL EQUALIZED VALUE
RURAL	ALL OTHER			MACHINERY	TOTAL ASSESSED VALUE	Dollars		
Over \$4,000 and Non-Homestead 33 1/4%	Timber Land Class 3e 20%	Homestead Up to \$4,000 25%	Over \$4,000 and Non-Homestead 40%	Permanently Attached to Real Estate 33 1/4%		Dollars	Dollars	

SOLD FOR TAXES	VALUATIONS BY SCHOOL DISTRICTS AS EQUALIZED BY DEPARTMENT OF TAXATION						Tax Including State Homestead	State Tax on Non-Homestead	SPECIAL TAXES	TOTAL TAXES	PAID	WHEN PAID	Number of Receipt	March Settlement 1958	June Settlement 1958	Penalty 1958	November Settlement 1958	Penalty 1958	Collections to First Monday in January 1959	Penalty 1959	Delinquent on First Monday in January 1959	Total Delinquent Tax and Penalty	REMARKS
	District No.	District No.	District No.	District No.	District No.	District No.																	
1						86	2194	56	2250	1	PAID IN FULL	MAY 31 1958	13512		2250							4737	
2						259	6608	172	6780	2	PAID IN FULL	MAY 31 1958	13513		6780							4736	
3						72	1836	48	1884	3	PAID IN FULL	MAY 22 1958	8381		1884							4754	
4						67	1710	44	1754	4	PAID IN FULL	FEB 28 1958	2489	1754								7367	
5						17	434	12	446												446	491 4840	
6										6													
7						67	1710	42	1752	7	PAID IN FULL	APR 18 1958	2783		1752							4739	
8						101	2576	66	2642	8	PAID IN FULL	MAY 31 1958	13514		2642								
9										9													
10						99	2526	66	2592	10	PAID IN FULL	JAN 24 1958	110	2592									
11										11													
12						72	1836	48	1884	12	2nd HALF PAID	OCT 20 1958			942		942					4834	
13						17	434	12	446	13	1st Half Paid	MAY 20 1958	17404										
14										14	2nd HALF PAID	OCT 20 1958	1632		223		223						
15						17	434	12	446	15	PAID IN FULL	DEC 31 1958	1762								446		
16										16													
17						77	1964	50	2014	17	PAID IN FULL	MAY 31 1958	13537		2014							4837	
18										18													
19						22	562	14	576	19	2nd HALF PAID	OCT 21 1958	1656		288		288					4836	
20						17	434	12	446	20	1st HALF PAID	MAY 31 1958	13621		446							3620	
						990	25258	654	25912					4346	19221		1453		446	446			

Sunrise Beach
 Shingobee Island
 Chippewa Point
 Kabekona Springs
 Otterway

Assessment Roll and Tax List of Real Property in the Town of Shingobee

* Indicate Type of Property: R-Residential, C-Commercial, I-Industrial, U-Utility, F-Farm, L-Lakeshore, T-Timber, M-Mineral

Form 300 (56) MILLER-SAYRE COMPANY, MINNEAPOLIS

Table with columns: IN WHOSE NAME ASSESSED, TO WHOM TRANSFERRED, DESCRIPTION OF PROPERTY, TRUE AND FULL VALUATIONS, ASSESSED VALUATIONS, and FINAL EQUALIZED VALUE.

15443

Cass County, Minnesota, for Taxes for the Year 1957.

Table with columns: VALUATIONS BY SCHOOL DISTRICTS AS EQUALIZED BY DEPARTMENT OF TAXATION, TAXES, PAID, WHEN PAID, and REMARKS.

Handwritten calculations: 279, 437, 716

16478 288

16766

9205

7157

404

Vertical text on the right edge: Shingobee Island, Chippewa Point, Kabekona Springs, Otway

Assessment Roll and Tax List of Real Property in the Town of Shingobee

* Indicate Type of Property: R-Residential, C-Commercial, I-Industrial, U-Utility, F-Farm, L-Lakeshore, T-Timber, M-Mineral

IN WHOSE NAME ASSESSED	TO WHOM TRANSFERRED	DESCRIPTION OF PROPERTY				No. School District	Indicate Homestead Tax or No	Indicate Agricultural Tax or No	Indicate Type of Property	TRUE AND FULL VALUATIONS					ASSESSED VALUATIONS					FINAL EQUALIZED VALUE		
		SUBDIVISION	Sec. or Lot	Town or Block	Rng.					Number of Acres of Land	LAND Exclusive of Structures and Improvements	BUILDINGS and Other Structures	MACHINERY Permanently Attached to Real Estate	TOTAL True and Full Value	RURAL		ALL OTHER		MACHINERY Permanently Attached to Real Estate		TOTAL ASSESSED VALUE	Total Assessed Value as Equalized by the Board of Review
															Acres	100ths	Homestead Up to \$4,000 20%	Over \$4,000 and Non-Homestead 33 1/3%				
Florence + Ray Lewis		NE 1/4 of NE 1/4	10	141	31	40	5	40	40													
"	"	NW 1/4 of NE 1/4				40	"	"														
"	"	SW 1/4 of NE 1/4				40	"	"														
"	"	SE 1/4 of NE 1/4				40	"	"														
Evan H. Peterson		NE 1/4 of NW 1/4				40	70	"														
"	"	NW 1/4 of NW 1/4				40	"	"														
U. S. of America		SW 1/4 of NW 1/4																				
U. S. of America		SE 1/4 of NW 1/4																				
Leonard M. + Jacqueline D. Bissell		NE 1/4 of SW 1/4				15	"	"														
U. S. of America		NW 1/4 of SW 1/4																				
U. S. of America		SW 1/4 of SW 1/4																				
U. S. of America		SE 1/4 of SW 1/4																				
U. S. of America		NE 1/4 of SE 1/4																				
U. S. of America		NW 1/4 of SE 1/4																				
U. S. of America		SW 1/4 of SE 1/4																				
U. S. of America		SE 1/4 of SE 1/4																				

255

Cass County, Minnesota, for Taxes for the Year 1957.

SOLD FOR TAXES	VALUATIONS BY SCHOOL DISTRICTS AS EQUALIZED BY DEPARTMENT OF TAXATION						Tax including State Homestead	State Tax on Non-Homestead	SPECIAL TAXES	TOTAL TAXES	PAID	WHEN PAID	Number of Receipt	March Settlement 1958	June Settlement 1958	Penalty	November Settlement 1958	Penalty	Collections to First Monday in January 1959	Penalty	Delinquent on First Monday in January 1959	Total Delinquent Tax and Penalty	REMARKS			
	District No.	District No.	District No.	District No.	District No.	District No.																				
	Rate	Rate	Rate	Rate	Rate	Rate																				
1	1472	1472	1472	1472	1472	1472			1472	1472	1st HALF PAID MAY 31 1958												736	736	0.23	
2	1472	1472	1472	1472	1472	1472			1472	1472	1st HALF PAID MAY 31 1958													736		
3	1748	1748	1748	1748	1748	1748			1748	1748	1st HALF PAID MAY 31 1958													874		
4	1472	1472	1472	1472	1472	1472			1472	1472	2nd HALF PAID MAY 31 1958													736		
6	1150	1150	1150	1150	1150	1150	17		1184	1184	Part Paid MAY 31 1958													276	908 999 7567	
7	1150	1150	1150	1150	1150	1150	34		1184	1184	Part Paid MAY 31 1958													300	884 772	
10	920	920	920	920	920	920	26		946	946	PAID IN FULL OCT 28 1958	16137													946 33	7536
20	9384	9384	9384	9384	9384	9384	94		9478	9478														3658	946	4874

268
140
408

9384
10406

94

9478
10500

3658

946

4874

Shurtise Beach
Shingobee Island
Chippewa Point
Kabelona Springs
Ojibway

Assessment Roll and Tax List of Real Property in the Town of Shingobee, Cass County, Minnesota, for Taxes for the Year 1957.

Cass County, Minnesota, for Taxes for the Year 1957.

Form SCD (56) DALLAS-BLANK COMPANY, MINNEAPOLIS

Indicate Type of Property: R-Residential, C-Commercial, I-Industrial, U-Utility, F-Farm, L-Lakeshore, T-Timber, M-Mineral

Table with columns: IN WHOSE NAME ASSESSED, TO WHOM TRANSFERRED, DESCRIPTION OF PROPERTY, TRUE AND FULL VALUATIONS, ASSESSED VALUATIONS, VALUATIONS BY SCHOOL DISTRICTS AS EQUALIZED BY DEPARTMENT OF TAXATION, SOLD FOR TAXES, PAID, WHEN PAID, Number of Receipt, March Settlement 1958, June Settlement 1958, Penalty, November Settlement 1958, Penalty, Collections to First Monday in January 1959, Penalty, Delinquent on First Monday in January 1959, Total Delinquent Tax and Penalty, REMARKS.

141-31

Shingobee Beach, Shingobee Island, Chippewa Point, Kabekona Springs, Otway

Assessment Roll and Tax List of Real Property in the Town of Shingobee

Indicate Type of Property: R-Residential, C-Commercial, I-Industrial, U-Utility, F-Farm, L-Lakeshore, T-Timber, M-Mineral

Cass County, Minnesota, for Taxes for the Year 1957.

Table with columns: IN WHOSE NAME ASSESSED, TO WHOM TRANSFERRED, DESCRIPTION OF PROPERTY, TRUE AND FULL VALUATIONS, ASSESSED VALUATIONS, and FINAL EQUALIZED VALUE. Includes handwritten entries for various property owners like U.S. of America, State of Minnesota, and individuals like Frank & Eva MacBain.

Table with columns: SOLD FOR TAXES, VALUATIONS BY SCHOOL DISTRICTS AS EQUALIZED BY DEPARTMENT OF TAXATION, SPECIAL TAXES, TOTAL TAXES, PAID, WHEN PAID, and REMARKS. Includes handwritten entries for tax payments and dates like 'PAID IN FULL MAY 9 1958'.

141-31

Shingobee Beach, Shingobee Island, Chippewa Point, Kabekona Springs, Ojibway

Assessment Roll and Tax List of Real Property in the Town of Shingobee

* Indicate Type of Property: R-Residential, C-Commercial, I-Industrial, U-Utility, F-Farm, L-Lakeshore, T-Timber, M-Mineral

Cass County, Minnesota, for Taxes for the Year 1957.

Table with columns: IN WHOSE NAME ASSESSED, TO WHOM TRANSFERRED, DESCRIPTION OF PROPERTY, TRUE AND FULL VALUATIONS, ASSESSED VALUATIONS, VALUATIONS BY SCHOOL DISTRICTS AS EQUALIZED BY DEPARTMENT OF TAXATION, TAXES, PAID, WHEN PAID, Number of Receipt, March Settlement 1958, June Settlement 1958, Penalty, November Settlement 1958, Penalty, Collections to First Monday in January 1959, Delinquent on First Monday in January 1959, Total Delinquent Tax and Penalty, REMARKS.

Assessment Roll and Tax List of Real Property in the Town of Kingsbee

Cass County, Minnesota, for Taxes for the Year 1957.

Form 500 (56) ... Indicate Type of Property: R-Residential, C-Commercial, I-Industrial, U-Utility, F-Farm, L-Lakeshore, T-Timber, M-Mineral

Main table with columns: IN WHOSE NAME ASSESSED, TO WHOM TRANSFERRED, DESCRIPTION OF PROPERTY, TRUE AND FULL VALUATIONS, ASSESSED VALUATIONS, VALUATIONS BY SCHOOL DISTRICTS AS EQUALIZED BY DEPARTMENT OF TAXATION, SOLD FOR TAXES, PAID, WHEN PAID, Number of Receipt, March Settlement 1958, June Settlement 1958, November Settlement 1958, Collections to First Monday in January 1959, Delinquent on First Monday in January 1959, Total Delinquent Tax and Penalty, REMARKS.

Vertical text on the right edge of the page: Sunrise Beach, Kingsbee Island, Chippewa Point, Kabekona Springs, Otjway

Assessment Roll and Tax List of Real Property in the Town of Shingobee

* Indicate Type of Property: R-Residential, C-Commercial, I-Industrial, U-Utility, F-Farm, L-Lakeshore, T-Timber, M-Mineral

Table with columns: IN WHOSE NAME ASSESSED, TO WHOM TRANSFERRED, DESCRIPTION OF PROPERTY, TRUE AND FULL VALUATIONS, ASSESSED VALUATIONS, FINAL EQUALIZED VALUE.

Everett A. & Cora L. Billadeau
Lauris & Minnie Kiphuth
Claude A. & Violet A. Lilley

Cass County, Minnesota, for Taxes for the Year 1957.

Table with columns: SOLD FOR TAXES, VALUATIONS BY SCHOOL DISTRICTS AS EQUALIZED BY DEPARTMENT OF TAXATION, Tax including State Homestead, SPECIAL TAXES, TOTAL TAXES, PAID, WHEN PAID, Number of Receipt, March Settlement 1958, June Settlement 1958, Penalty, November Settlement 1958, Collections to First Monday in January 1959, Delinquent on First Monday in January 1959, Total Delinquent Tax and Penalty, REMARKS.

1
2
3
4
5
6
7
8
9
10
11
12
13
14
15
16
17
18
19
20

424 10818 280 11098 864 5876 4358

Shurtise Beach
Shingobee Island
Chippewa Point
Kabekona Springs
Ojibway

Assessment Roll and Tax List of Real Property in the Town of Shingobee

Indicate Type of Property: R-Residential, C-Commercial, I-Industrial, U-Utility, F-Farm, L-Lakeshore, T-Timber, M-Mineral

Cass County, Minnesota, for Taxes for the Year 1957.

Table with columns: IN WHOSE NAME ASSESSED, TO WHOM TRANSFERRED, DESCRIPTION OF PROPERTY, TRUE AND FULL VALUATIONS, ASSESSED VALUATIONS, VALUATIONS BY SCHOOL DISTRICTS AS EQUALIZED BY DEPARTMENT OF TAXATION, TAXES, PAID, WHEN PAID, Number of Receipt, March Settlement 1958, June Settlement 1958, Penalty, November Settlement 1958, Collection to First Monday in January 1959, Delinquent on First Monday in January 1959, Total Delinquent Tax and Penalty, REMARKS.

Earl + Pauline Sagentos

State of Minnesota

State of Minnesota

U. S. of America

U. S. of America

U. S. of America

U. S. of America

State of Minnesota

Earle V. & Pauline Sagentos

U. S. of America

U. S. of America

State of Minnesota

State of Minnesota

U. S. of America

11025

388

8930 254

9184

9184

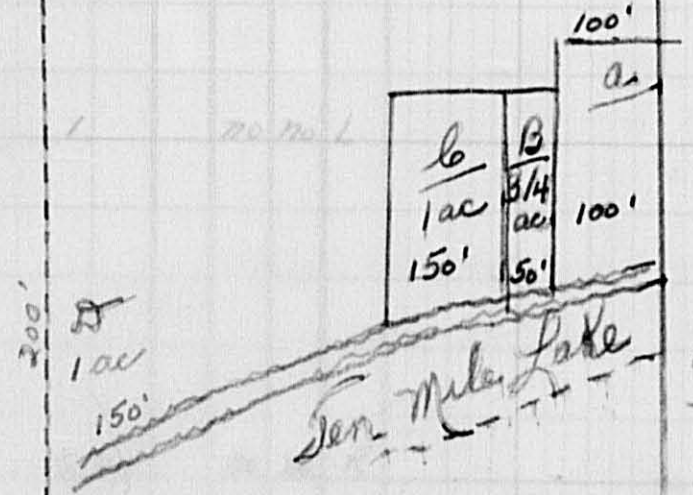
Shingobee Beach, Shingobee Island, Chippewa Point, Kabekona Springs, Otjway

Form SCID (56) BILLS-BY-SALE REPORT, MINNAPOLIS

IN WHOSE NAME ASSESSED TO WHOM TRANSFERRED

~~Ernest P. Fogel~~
~~Henry Rose~~ Henry Rose
~~Peter N. Schmitz~~
~~Ernest M. & Esther C. Jensen~~
~~Ernest P. Fogel~~ Henry Rose
~~Henry Rose~~
~~Peter N. Schmitz~~
~~Ernest M. & Esther C. Jensen~~
 U. S. of America
 U. S. of America
 U. S. of America
 U. S. of America
~~Ernest P. Fogel~~
~~Henry Rose~~ Henry Rose
 U. S. of America
 U. S. of America
 U. S. of America
 Lydia C. & Orrin W. Johnson
 R. W. Nevak
 C. Petrus Peterson
 Adam S. Reisz
 Thelma G. Finley

E.
 1/2 of Lot 1
 19.5 ac.
 Ernest M. & Esther C. Jensen
 Peter N. Schmitz
 Lot 1 Sec. 34-141-31
 SW 1/4 of SE 1/4
 SE 1/4 of SE 1/4
 Part of SW 1/4 of S 24



Except for distance given, this map is not exact as we don't have the distance of lake.

- A. J. Kolderie
- B. "
- C. Elmer Nordland
- D. Henry Rose
- E. Ernest & Esther Jensen
Peter N. Schmitz

ASSESSED VALUATIONS

ALL OTHER	MACHINERY	TOTAL ASSESSED VALUE	Total Assessed Value as Equalized by the Board of Review	FINAL EQUALIZED VALUE
Over \$4,000 and Non-Homestead 25%	Permanently Attached to Real Estate 33 1/3%			

SOLD FOR TAXES	VALUATIONS BY SCHOOL DISTRICTS AS EQUALIZED BY DEPARTMENT OF TAXATION						Tax Including State Homestead	State Tax on Non-Homestead	SPECIAL TAXES	TOTAL TAXES	PAID	WHEN PAID	Number of Receipt	March Settlement 1958	June Settlement 1958	Penalty	November Settlement 1958	Penalty	Collections to First Monday in January 1959	Penalty	Delinquent on First Monday in January 1959	Total Delinquent Tax and Penalty	REMARKS		
	District No. Rate	District No. Rate	District No. Rate	District No. Rate	District No. Rate	District No. Rate																			
1						86	1980	56	2036	1	PAID IN FULL	MAY 24 1958	8437		2036								4923		
2						90	2072	60	2132	2	PAID IN FULL	MAY 24 1958			2132										
3						224	5154	148	5302	3	PAID IN FULL	JAN 21 1958	92	5302										1515	
4						100	2552	66	2618	4	PAID IN FULL	MAY 24 1958	8437		2618									4923	
5						208	4786	138	4924	5	PAID IN FULL	JAN 21 1958	92	4924										1515	
6										6															
7										7															
8										8															
9										9															
10						67	1710	44	1754	10	PAID IN FULL	MAY 24 1958	8437		1754									4923	
11										11															
12										12															
13										13															
14										14															
15						547	13956	362	14318	15	PAID IN FULL	MAY 31 1958	13562		14218									4924	
16	SOLD FOR TAXES					414	10562	274	10836	16	PAID IN FULL	NOV 22 1958	17292 17259							10836	866			7116	
17						549	14006	362	14368	17	PAID IN FULL	MAY 31 1958	13563		14368									4924	
18						333	8496	220	8716	18	PAID IN FULL	MAY 6 1958	8062		8716									4924	
19										19															
20	SOLD FOR TAXES					50	1276	34	1310	20															
						608	13992	1764	68314																
							52558																		
							66550																		

27937

10224 45942

10836

1310

1310

Sunrise Beach
 Shingobee Island
 Chippewa Point
 Kabekona Springs
 Otterway

Assessment Roll and Tax List of Real Property in the Town of Shingobee

Cass County, Minnesota, for Taxes for the Year 1957.

* Indicate Type of Property: R-Residential, C-Commercial, I-Industrial, U-Utility, F-Farm, L-Lakeshore, T-Timber, M-Mineral

Table with columns: IN WHOSE NAME ASSESSED, TO WHOM TRANSFERRED, DESCRIPTION OF PROPERTY, TRUE AND FULL VALUATIONS, ASSESSED VALUATIONS, VALUATIONS BY SCHOOL DISTRICTS AS EQUALIZED BY DEPARTMENT OF TAXATION, TAXES, PAID, WHEN PAID, Number of Receipt, March Settlement 1958, June Settlement 1958, November Settlement 1958, Penalty, Collections to First Monday in January 1959, Delinquent on First Monday in January 1959, Total Delinquent Tax and Penalty, REMARKS.

6323

1422

36280 942

37222

30496

6072

654

Shingobee Beach, Shingobee Island, Chippewa Point, Kabekona Springs, Ojibway

Assessment Roll and Tax List of Real Property in the Town of Shingobee

Indicate Type of Property: R-Residential, C-Commercial, I-Industrial, U-Utility, F-Farm, L-Lakeshore, T-Timber, M-Mineral

Cass County, Minnesota, for Taxes for the Year 1957.

Table with columns: IN WHOSE NAME ASSESSED, TO WHOM TRANSFERRED, DESCRIPTION OF PROPERTY, TRUE AND FULL VALUATIONS, ASSESSED VALUATIONS, VALUATIONS BY SCHOOL DISTRICTS AS EQUALIZED BY DEPARTMENT OF TAXATION, TAXES, PAID, WHEN PAID, Number of Receipt, March Settlement, June Settlement, Penalty, November Settlement, Collections to First Monday in January, Delinquent on First Monday in January, Total Delinquent Tax and Penalty, REMARKS.

153.34

2803

64506

1854

66360

14204 50735

16.58

Shingobee Beach, Shingobee Island, Chippewa Point, Kabekona Springs, Otway

Assessment Roll and Tax List of Real Property in the Town of Shingobee, Minnesota

* Indicate Type of Property: R-Residential, C-Commercial, I-Industrial, U-Utility, F-Farm, L-Lakeshore, T-Timber, M-Mineral

142-31

Table with columns: IN WHOSE NAME ASSESSED, TO WHOM TRANSFERRED, DESCRIPTION OF PROPERTY, TRUE AND FULL VALUATIONS, ASSESSED VALUATIONS, and FINAL EQUALIZED VALUE. Includes handwritten entries for various property owners like Elsie H. Matson and Sophie B. Anderson.

Cass County, Minnesota, for Taxes for the Year 1957.

Table with columns: SOLD FOR TAXES, VALUATIONS BY SCHOOL DISTRICTS AS EQUALIZED BY DEPARTMENT OF TAXATION, TAX INCLUDING STATE HOMESTEAD, SPECIAL TAXES, TOTAL TAXES, PAID, WHEN PAID, and REMARKS. Includes handwritten entries for various tax payments and school district numbers.

Shingobee Beach, Shingobee Island, Chippewa Point, Kabekona Springs, Ojibway

Assessment Roll and Tax List of Real Property in the Town of Shingobee

Indicate Type of Property: R-Residential, C-Commercial, I-Industrial, U-Utility, F-Farm, L-Lakeshore, T-Timber, M-Mineral

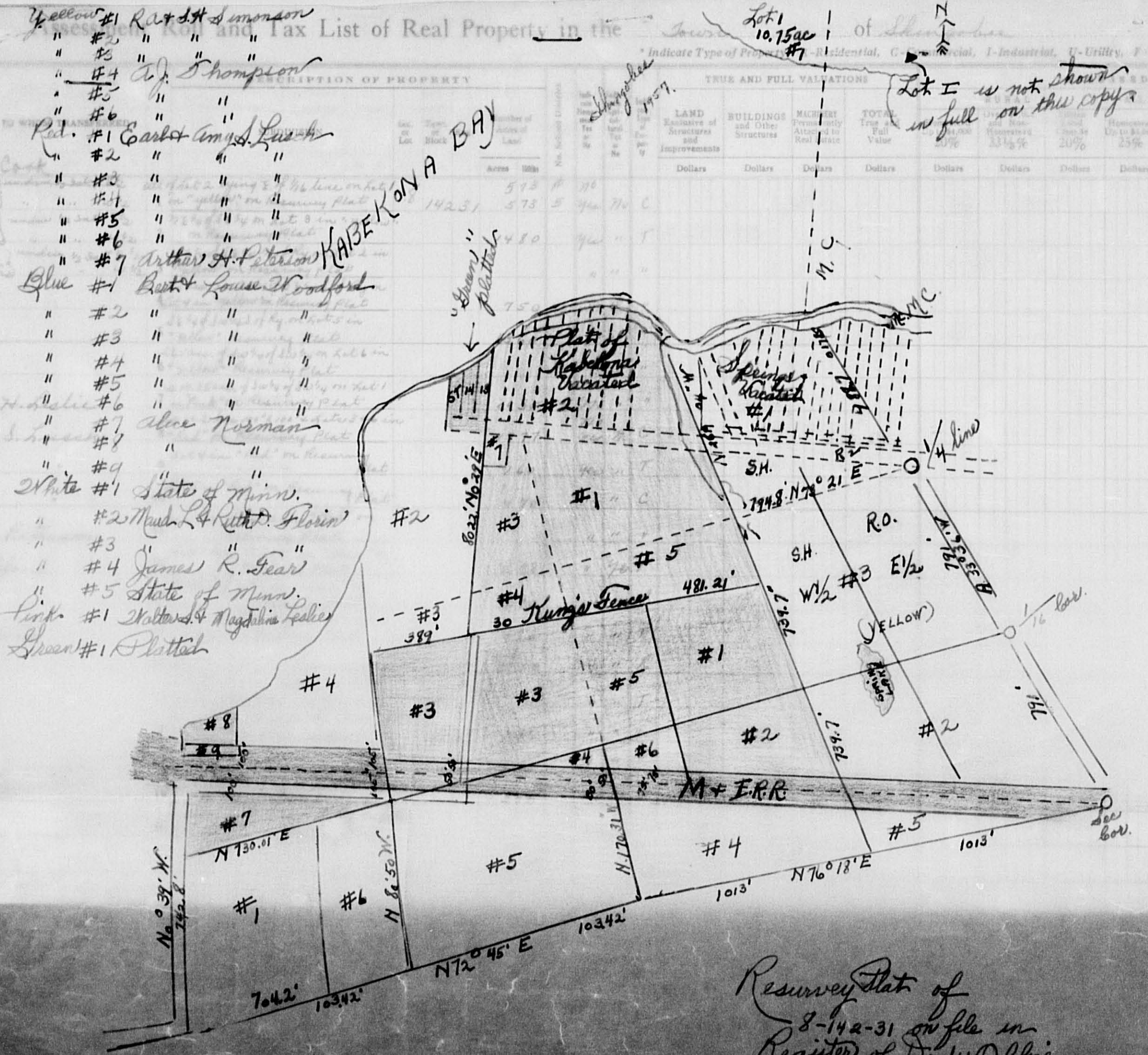
Cass County, Minnesota, for Taxes for the Year 1957.

Table with columns: IN WHOSE NAME ASSESSED, TO WHOM TRANSFERRED, DESCRIPTION OF PROPERTY, TRUE AND FULL VALUATIONS, ASSESSED VALUATIONS, VALUATIONS BY SCHOOL DISTRICTS AS EQUALIZED BY DEPARTMENT OF TAXATION, TAXES, PAID, WHEN PAID, Number of Receipt, March Settlement 1958, June Settlement 1958, November Settlement 1958, Collections to First Monday in January 1959, Delinquent on First Monday in January 1959, Total Delinquent Tax and Penalty, REMARKS.

142-31

Shurtise Beach, Shingobee Island, Chippewa Point, Kabekona Springs, Otjway In

Form 3CD (56) 1-15-56



IN WHOSE NAME ASSESSED

Ronald C. & Marjorie
 R.O. & Vernee Simonson
 Simon H. & Dagny Simonson
 R.O. & Vernee Simonson
 Simon H. & Dagny Simonson
 R.O. & Vernee Simonson
 Simon H. & Dagny Simonson
 A. J. Thompson
 " "
 " "
 " "
 " "
 Walter S. & Magdalena
 Earl Raymond & Amy
 " "
 " "
 " "
 Arthur H. & Carole
 Bert & Louise Wood
 Bert Woodford
 Bert & Louise Wood
 " "
 " "
 " "
 " "
 Alice Norman
 " "

Yellow #1 R.O. & Vernee Simonson
 " #2 " " "
 " #3 " " "
 " #4 " " "
 " #5 " " "
 " #6 " " "
 " #7 Arthur H. & Carole
 Blue #1 Bert & Louise Woodford
 " #2 " " "
 " #3 " " "
 " #4 " " "
 " #5 " " "
 " #6 Walter S. & Magdalena
 " #7 Earl Raymond & Amy
 " #8 " " "
 " #9 " " "
 " #10 " " "
 " #11 " " "
 " #12 " " "
 " #13 " " "
 " #14 " " "
 " #15 " " "
 " #16 " " "
 " #17 " " "
 " #18 " " "
 " #19 " " "
 " #20 " " "
 White #1 State of Minn.
 " #2 Maud L. & Ruth D. Florin
 " #3 " " "
 " #4 James R. Fear
 " #5 State of Minn.
 Pink #1 Walter S. & Magdalena
 Green #1 Plittich

L-Lakeshore, T-Timber, M-Mineral

CLASSIFICATION	LAND	BUILDINGS	MACHINERY	TOTAL	FINAL
	Improvements	and Other Structures	Attached to Real Estate	Value	EQUALIZED VALUE
	Dollars	Dollars	Dollars	Dollars	Dollars

SOLD FOR TAXES	VALUATIONS BY SCHOOL DISTRICTS AS EQUALIZED BY DEPARTMENT OF TAXATION					Tax including State Homestead	State Tax on Non-Homestead	SPECIAL TAXES	TOTAL TAXES	PAID	WHEN PAID	Number of Receipt	March Settlement 1958	June Settlement 1958	Penalty	November Settlement 1958	Penalty	Collections to First Monday in January 1959	Penalty	Delinquent on First Monday in January 1959	Total Delinquent Tax and Penalty	REMARKS
	District No.	District No.	District No.	District No.	District No.																	
1						419.18	558		424.76	1 PAID IN FULL	MAY 9 1958			424.76								4957
2						434			434	2 PAID IN FULL	MAY 9 1958	8109		434								"
3						562			562	3 PAID IN FULL	MAY 9 1958			562								"
4						358			358	4 PAID IN FULL	MAY 27 1958			358								4956
5						2576			2576	5 PAID IN FULL	MAY 27 1958	9606		2576								"
6						230			230	6 PAID IN FULL	MAY 27 1958			230								"
7	SOLD FOR TAXES					1276	34		1310	7 PAID IN FULL	AUG 4 1958	15215					1310					11204
8						18370	304		18674	8 1st HALF PAID	OCT 24 1958											4954
9						154			154	9 1st HALF PAID	MAY 14 1958	16972		9593		583		9010				"
10						353			353	10 1st HALF PAID	MAY 14 1958	16051										"
11						4746			4746	11 PAID IN FULL	MAY 31 1958	13551		4746								4959
12						138			138	12 2nd HALF PAID	OCT 30 1958											4955
13						208			208	13 1st HALF PAID	MAY 31 1958											"
14						276			276	14 1st HALF PAID	MAY 31 1958											"
15						2532			2532	15 1st HALF PAID	MAY 31 1958	17800		1750		1750						"
16						46			46	16 2nd HALF PAID	OCT 30 1958											"
17						230			230	17 1st HALF PAID	MAY 27 1958											"
18						70			70	18 1st HALF PAID	MAY 31 1958											"
19						5306	138		5444	19 PAID IN FULL	MAY 31 1958	13555		15050								4958
20						9364	242		9606	20 PAID IN FULL	MAY 31 1958											"
						89152	1276		90428					99975		12653						

Resurvey plat of
 8-142-31 on file in
 Register of Deeds Office.

Sunrise Beach
 Shingobee Island
 Chippewa Point
 Kabekona Springs
 Otjway In

Assessment Roll and Tax List of Real Property in the Town of Shingobee

* Indicate Type of Property: R-Residential, C-Commercial, I-Industrial, U-Utility, F-Farm, L-Lakeshore, T-Timber, M-Mineral

Form 5CD (56) ILLINOIS STATE DEPARTMENT OF REVENUE

IN WHOSE NAME ASSESSED	TO WHOM TRANSFERRED	DESCRIPTION OF PROPERTY				TRUE AND FULL VALUATIONS							ASSESSED VALUATIONS					FINAL EQUALIZED VALUE
		SUBDIVISION	Sec. of Lot	Town or Block	Rng.	Number of Acres of Land Acres 100ths	LAND Exclusive of Structures and Improvements	BUILDINGS and Other Structures	MACHINERY Permanently Attached to Real Estate	TOTAL True and Full Value	RURAL		ALL OTHER		MACHINERY Permanently Attached to Real Estate	TOTAL ASSESSED VALUE	Total Assessed Value as Equalized by the Board of Review	
											Homestead Up to \$1,000 20%	Over \$4,000 and Non-Homestead 33 1/8%	Timber Land Class 3c 20%	Homestead Up to \$1,000 25%				
U. S. of America	<i>in trust for Minn. Chippewa Tribe</i>	E 1/2 of NE 1/4 of NE 1/4	13	14231														
		NW 1/4 of NE 1/4																
		SW 1/4 of NE 1/4																
		SE 1/4 of NE 1/4																
		NE 1/4 of NW 1/4																
		NW 1/4 of NW 1/4																
		SW 1/4 of NW 1/4																
		SE 1/4 of NW 1/4																
		NE 1/4 of SW 1/4																
		NW 1/4 of SW 1/4																
		SW 1/4 of SW 1/4																
		SE 1/4 of SW 1/4																
		NE 1/4 of SE 1/4																
		NW 1/4 of SE 1/4																
		SW 1/4 of SE 1/4																
		SE 1/4 of SE 1/4																

Cass County, Minnesota, for Taxes for the Year 1957.

SOLD FOR TAXES	VALUATIONS BY SCHOOL DISTRICTS AS EQUALIZED BY DEPARTMENT OF TAXATION						Tax including State Homestead	State Tax on Non-Homestead	SPECIAL TAXES	TOTAL TAXES	PAID	WHEN PAID	Number of Receipt	March Settlement 1958	June Settlement 1958	Penalty	November Settlement 1958	Penalty	Collections to First Monday in January 1959	Penalty	Delinquent on First Monday in January 1959	Total Delinquent Tax and Penalty	REMARKS
	District No.	District No.	District No.	District No.	District No.	District No.																	
	Rate	Rate	Rate	Rate	Rate	Rate																	
1																							
2																							
3																							
4																							
5																							
6																							
7																							
8																							
9																							
10																							
11																							
12																							
13																							
14																							
15																							
16																							
17																							
18																							
19																							
20																							

Shingobee Beach, Shingobee Island, Chippewa Point, Kabekona Springs, Ojibway

Assessment Roll and Tax List of Real Property in the Town of Shingobee

* Indicate Type of Property: R-Residential, C-Commercial, I-Industrial, U-Utility, F-Farm, L-Lakeshore, T-Timber, M-Mineral

Table with columns: IN WHOSE NAME ASSESSED, TO WHOM TRANSFERRED, DESCRIPTION OF PROPERTY, TRUE AND FULL VALUATIONS, ASSESSED VALUATIONS, VALUATIONS BY SCHOOL DISTRICTS AS EQUALIZED BY DEPARTMENT OF TAXATION, TAXES, PAID, WHEN PAID, Number of Receipt, March Settlement, June Settlement, Penalty, November Settlement, Penalty, Collections to First Monday in January, Delinquent on First Monday in January, Total Delinquent Tax and Penalty, REMARKS.

(Continued on next page)

Shingobee Beach, Shingobee Island, Chippewa Point, Kabekona Springs, Ojibway

Assessment Roll and Tax List of Real Property in the Town of Shingobee

Indicate Type of Property: R-Residential, C-Commercial, I-Industrial, U-Utility, F-Farm, L-Lakeshore, T-Timber, M-Mineral

Table with columns: IN WHOSE NAME ASSESSED, TO WHOM TRANSFERRED, DESCRIPTION OF PROPERTY, TRUE AND FULL VALUATIONS, ASSESSED VALUATIONS, FINAL EQUALIZED VALUE. Includes handwritten entries for Lewis & Nettie S. Becker, John Hanson, Mahlon & Ruby S. Sigler, Russell & Neva S. Homan, John A. & Anna G. Trimmell, Earl E. & Dorothy E. Walters, Wendelin & Agnes Andert, and Earl E. & Dorothy E. Walters.

Cass County, Minnesota, for Taxes for the Year 1957.

Table with columns: SOLD FOR TAXES, VALUATIONS BY SCHOOL DISTRICTS AS EQUALIZED BY DEPARTMENT OF TAXATION, Tax including State Homestead, State Tax on Non-Homestead, SPECIAL TAXES, TOTAL TAXES, PAID, WHEN PAID, Number of Receipt, March Settlement 1958, June Settlement 1958, November Settlement 1958, Collections to First Monday in January 1959, Delinquent on First Monday in January 1959, Total Delinquent Tax and Penalty, REMARKS. Includes handwritten entries for 1st and 2nd half payments and full payments.

142-31

Shingobee Beach, Shingobee Island, Chippewa Point, Kabekona Springs, Otjway

Assessment Roll and Tax List of Real Property in the Town of Shingobee

* Indicate Type of Property: R-Residential, C-Commercial, I-Industrial, U-Utility, F-Farm, L-Lakeshore, T-Timber, M-Mineral

Table with columns: IN WHOSE NAME ASSESSED, TO WHOM TRANSFERRED, DESCRIPTION OF PROPERTY, TRUE AND FULL VALUATIONS, ASSESSED VALUATIONS, FINAL EQUALIZED VALUE.

Cass County, Minnesota, for Taxes for the Year 1957.

Table with columns: VALUATIONS BY SCHOOL DISTRICTS AS EQUALIZED BY DEPARTMENT OF TAXATION, TAX INCLUDING STATE HOMESTEAD, STATE TAX ON NON-HOMESTEAD, SPECIAL TAXES, TOTAL TAXES, PAID, WHEN PAID, Number of Receipt, March Settlement 1958, June Settlement 1958, November Settlement 1958, Collections to First Monday in January 1959, Delinquent on First Monday in January 1959, Total Delinquent Tax and Penalty, REMARKS.

142-31

Shingobee Beach, Shingobee Island, Chippewa Point, Kabekona Springs, Otterway

Assessment Roll and Tax List of Real Property in the Town of Shingobee, Minnesota

Indicate Type of Property: R-Residential, C-Commercial, I-Industrial, U-Utility, F-Farm, L-Lakeshore, T-Timber, M-Mineral

Table with columns: IN WHOSE NAME ASSESSED, TO WHOM TRANSFERRED, DESCRIPTION OF PROPERTY, TRUE AND FULL VALUATIONS, ASSESSED VALUATIONS, FINAL EQUALIZED VALUE.

Cass County, Minnesota, for Taxes for the Year 1957.

Table with columns: VALUATIONS BY SCHOOL DISTRICTS AS EQUALIZED BY DEPARTMENT OF TAXATION, TAX INCLUDING STATE HOMESTEAD, SPECIAL TAXES, TOTAL TAXES, PAID, WHEN PAID, Number of Receipt, March Settlement 1958, June Settlement 1958, November Settlement 1958, Collections to First Monday in January 1959, Delinquent on First Monday in January 1959, Total Delinquent Tax and Penalty, REMARKS.

142-31

Sunrise Beach, Shingobee Island, Chippewa Point, Kabecona Springs, Otibway

Assessment Roll and Tax List of Real Property in the Town of Skingobee

* Indicate Type of Property: R-Residential, C-Commercial, I-Industrial, U-Utility, F-Farm, L-Lakeshore, T-Timber, M-Mineral

Table with columns: IN WHOSE NAME ASSESSED, TO WHOM TRANSFERRED, DESCRIPTION OF PROPERTY, TRUE AND FULL VALUATIONS, ASSESSED VALUATIONS, FINAL EQUALIZED VALUE.

Cass County, Minnesota, for Taxes for the Year 1957.

Table with columns: SOLD FOR TAXES, VALUATIONS BY SCHOOL DISTRICTS AS EQUALIZED BY DEPARTMENT OF TAXATION, Tax including State Homestead, State Tax on Non-Homestead, SPECIAL TAXES, TOTAL TAXES, PAID, WHEN PAID, Number of Receipt, March Settlement, June Settlement, November Settlement, Collections to First Monday in January 1959, Delinquent on First Monday in January 1959, Total Delinquent Tax and Penalty, REMARKS.

142-31

Sunrise Beach, Skingobee Island, Chipewewa Point, Kabekona Springs, Ojibway

Assessment Roll and Tax List of Real Property in the Town of Shingobee

Indicate Type of Property: R-Residential, C-Commercial, I-Industrial, U-Utility, F-Farm, L-Lakeshore, T-Timber, M-Mineral

Table with columns: IN WHOSE NAME ASSESSED, TO WHOM TRANSFERRED, DESCRIPTION OF PROPERTY, TRUE AND FULL VALUATIONS, ASSESSED VALUATIONS, FINAL EQUALIZED VALUE. Includes handwritten entries for Harold Fisher, R. W. Meland, etc.

Cass County, Minnesota, for Taxes for the Year 1957.

Table with columns: VALUATIONS BY SCHOOL DISTRICTS AS EQUALIZED BY DEPARTMENT OF TAXATION, Tax including State Homestead, State Tax on Non-Homestead, SPECIAL TAXES, TOTAL TAXES, PAID, WHEN PAID, Number of Receipt, March Settlement 1958, June Settlement 1958, November Settlement 1958, Collections to First Monday in January 1959, Delinquent on First Monday in January 1959, Total Delinquent Tax and Penalty, REMARKS. Includes handwritten entries for Harold Fisher, R. W. Meland, etc.

142-31

Shingobee Island, Chippewa Point, Kabokona Springs, Otway

Assessment Roll and Tax List of Real Property in the Town of Shingobee

Indicate Type of Property: R-Residential, C-Commercial, I-Industrial, U-Utility, F-Farm, L-Lakeshore, T-Timber, M-Mineral

Cass County, Minnesota, for Taxes for the Year 1957.

Table with columns: IN WHOSE NAME ASSESSED, TO WHOM TRANSFERRED, DESCRIPTION OF PROPERTY, TRUE AND FULL VALUATIONS, ASSESSED VALUATIONS, FINAL EQUALIZED VALUE.

Table with columns: SOLD FOR TAXES, VALUATIONS BY SCHOOL DISTRICTS AS EQUALIZED BY DEPARTMENT OF TAXATION, Tax including State Homestead, SPECIAL TAXES, TOTAL TAXES, PAID, WHEN PAID, Number of Receipt, March Settlement 1958, June Settlement 1958, November Settlement 1958, Collections to First Monday in January 1959, Delinquent on First Monday in January 1959, Total Delinquent Tax and Penalty, REMARKS.

(Continued on Next Page)

Shingobee Island, Chipewawa Point, Kabekona Springs, Otway Pt

Assessment Roll and Tax List of Real Property in the Town of Shingobee

* Indicate Type of Property: R-Residential, C-Commercial, I-Industrial, U-Utility, F-Farm, L-Lakeshore, T-Timber, M-Mineral

Table with columns: IN WHOSE NAME ASSESSED, TO WHOM TRANSFERRED, DESCRIPTION OF PROPERTY, TRUE AND FULL VALUATIONS (RURAL, ALL OTHER, MACHINERY, TOTAL ASSESSED VALUE), VALUATIONS BY SCHOOL DISTRICTS AS EQUALIZED BY DEPARTMENT OF TAXATION, TAXES (SOLD FOR TAXES, District No., Rate, Mills), PAID, WHEN PAID, Number of Receipt, March Settlement, June Settlement, November Settlement, Penalty, Collections to First Monday in January 1959, Delinquent on First Monday in January 1959, Total Delinquent Tax and Penalty, REMARKS.

142-31

Sunrise Beach

Shingobee Island

Chippewa Point

Kabecona Springs

Ojibway Pt

Assessment Roll and Tax List of Real Property in the Town of Shingobee

Cass County, Minnesota, for Taxes for the Year 1957.

* Indicate Type of Property: R-Residential, C-Commercial, I-Industrial, U-Utility, F-Farm, L-Lakeshore, T-Timber, M-Mineral

Table with columns: IN WHOSE NAME ASSESSED, TO WHOM TRANSFERRED, DESCRIPTION OF PROPERTY, TRUE AND FULL VALUATIONS, ASSESSED VALUATIONS, VALUATIONS BY SCHOOL DISTRICTS AS EQUALIZED BY DEPARTMENT OF TAXATION, TAXES, PAID, WHEN PAID, Number of Receipt, March Settlement, June Settlement, November Settlement, Collections to First Monday in January, Delinquent on First Monday in January, Total Delinquent Tax and Penalty, REMARKS.

Assessment Roll and Tax List of Real Property in the Town of Shingobee

Indicate Type of Property: R-Residential, C-Commercial, I-Industrial, U-Utility, F-Farm, L-Lakeshore, T-Timber, M-Mineral

Cass County, Minnesota, for Taxes for the Year 1957.

Table with columns: IN WHOSE NAME ASSESSED, TO WHOM TRANSFERRED, DESCRIPTION OF PROPERTY, TRUE AND FULL VALUATIONS, ASSESSED VALUATIONS, and FINAL EQUALIZED VALUE. Includes handwritten entries for names like Stephan Gruber and Harry Paddock.

Table with columns: VALUATIONS BY SCHOOL DISTRICTS AS EQUALIZED BY DEPARTMENT OF TAXATION, TAXES, PAID, WHEN PAID, Number of Receipt, March Settlement 1958, June Settlement 1958, Penalty, November Settlement 1958, Penalty, Collections to First Monday in January 1959, Penalty, Delinquent on First Monday in January 1959, Total Delinquent Tax and Penalty, REMARKS. Includes handwritten tax payment details.

142-31

Shingobee Beach, Shingobee Island, Chippewa Point, Kabekona Springs, Otway

Assessment Roll and Tax List of Real Property in the Town of Shingobee

Indicate Type of Property: R-Residential, C-Commercial, I-Industrial, U-Utility, F-Farm, L-Lakeshore, T-Timber, M-Mineral

Cass County, Minnesota, for Taxes for the Year 1957.

Form 300 (36) BILLS-BLANK COMPANY, MINNEAPOLIS

Table with columns: IN WHOSE NAME ASSESSED, TO WHOM TRANSFERRED, DESCRIPTION OF PROPERTY, TRUE AND FULL VALUATIONS, ASSESSED VALUATIONS, and FINAL EQUALIZED VALUE.

Table with columns: VALUATIONS BY SCHOOL DISTRICTS AS EQUALIZED BY DEPARTMENT OF TAXATION, TAXES, PAID, WHEN PAID, and REMARKS.

Vertical text on the right edge of the page: Shingobee Island, Chippewa Point, Kaberona Springs, Ojibway Beach, Sunrise Beach.

Assessment Roll and Tax List of Real Property in the Town of Shingobee

* Indicate Type of Property: R-Residential, C-Commercial, I-Industrial, U-Utility, F-Farm, L-Lakeshore, T-Timber, M-Mineral

Table with columns: IN WHOSE NAME ASSESSED, TO WHOM TRANSFERRED, DESCRIPTION OF PROPERTY, TRUE AND FULL VALUATIONS, ASSESSED VALUATIONS, and FINAL EQUALIZED VALUE.

Cass County, Minnesota, for Taxes for the Year 1957.

Table with columns: VALUATIONS BY SCHOOL DISTRICTS AS EQUALIZED BY DEPARTMENT OF TAXATION, TAXES, PAID, WHEN PAID, and REMARKS.

Shingobee Beach, Shingobee Island, Chippewa Point, Kabekona Springs, Otway on

Assessment Roll and Tax List of Real Property in the Town of Shingobee

Form 500 (56) JULY-1945 REVISION, MINNEAPOLIS

Indicate Type of Property: R-Residential, C-Commercial, I-Industrial, U-Utility, F-Farm, L-Lakeshore, T-Timber, M-Mineral

Cass County, Minnesota, for Taxes for the Year 1957.

Table with columns: IN WHOSE NAME ASSESSED, TO WHOM TRANSFERRED, DESCRIPTION OF PROPERTY, TRUE AND FULL VALUATIONS, ASSESSED VALUATIONS, and FINAL EQUALIZED VALUE. Includes handwritten entries for property descriptions and names like 'F. E. & Rhea Bennett'.

Table with columns: VALUATIONS BY SCHOOL DISTRICTS AS EQUALIZED BY DEPARTMENT OF TAXATION, SOLD FOR TAXES, PAID, WHEN PAID, and REMARKS. Includes handwritten notes such as 'PAID IN FULL MAY 13 1958'.

Vertical text on the right edge of the page listing locations: Sunrise Beach, Shingobee Island, Chippewa Point, Kabekona Springs, Oilway on

Assessment Roll and Tax List of Real Property in the Town of Shingobee

* Indicate Type of Property: R-Residential, C-Commercial, I-Industrial, U-Utility, F-Farm, L-Lakeshore, T-Timber, M-Mineral

Form 5C (56) JULY 1956

IN WHOSE NAME ASSESSED	TO WHOM TRANSFERRED	SUBDIVISION		DESCRIPTION OF PROPERTY				TRUE AND FULL VALUATIONS					ASSESSED VALUATIONS					FINAL EQUALIZED VALUE
		Sec. or Lot	Town or Block	Rag.	Number of Acres of Land	Machinery Permanently Attached to Real Estate	Buildings and Other Structures	Land Exclusive of Structures and Improvements	RURAL		ALL OTHER			Machinery Permanently Attached to Real Estate	TOTAL ASSESSED VALUE	Total Assessed Value as Equalized by the Board of Review		
									Acres	100ths	Homestead Up to \$4,000 20%	Over \$4,000 and Non-Homestead 33 1/3%	Timber Land Class 3e 20%				Homestead Up to \$4,000 25%	
Werner M. Backman		1	1															
"	"	2																
"	"	3																
"	"	4																
"	"	5																
"	"	6																
"	"	7																
"	"	8																
"	"	9																
"	"	10																
"	"	11																
"	"	12																
"	"	13	1	2														
"	"	14	2															
"	"	15	3															
"	"	16	4															
"	"	17	5															
"	"	18	6															
"	"	19	7															
"	"	20																

Cass County, Minnesota, for Taxes for the Year 1957.

SOLD FOR TAXES	VALUATIONS BY SCHOOL DISTRICTS AS EQUALIZED BY DEPARTMENT OF TAXATION						Tax Including State Homestead	State Tax on Non-Homestead	SPECIAL TAXES	TOTAL TAXES	PAID	WHEN PAID	Number of Receipt	March Settlement 1958	June Settlement 1958	Penalty	November Settlement 1958	Penalty	Collections to First Monday in January 1959	Penalty	Delinquent on First Monday in January 1959	Total Delinquent Tax and Penalty	REMARKS	
	District No.	District No.	District No.	District No.	District No.	District No.																		
	Rate	Rate	Rate	Rate	Rate	Rate																		
1																								
2																								
3																								
4																								
5																								
6																								
7																								
8																								
9																								
10																								
11																								
12																								
13																								
14																								
15																								
16																								
17																								
18																								
19																								
20																								

440 11240 280 11520 5760 5760

Wa-Ba Ball's 1st Shingobee Island Chippewa Point Kabekona Springs Otway

Assessment Roll and Tax List of Real Property in the Town of Shingabe

* Indicate Type of Property: R-Residential, C-Commercial, I-Industrial, U-Utility, F-Farm, L-Lakeshore, T-Timber, M-Mineral

Form 3C (56) JULY 1956 MINN. STAT. 120.01

Table with columns: IN WHOSE NAME ASSESSED, TO WHOM TRANSFERRED, SUBDIVISION, Sec. or Lot, Town or Block, Reg., Number of Acres of Land, No. School District, Indicate Homestead, Indicate Agricultural, Indicate Type of Property, TRUE AND FULL VALUATIONS (LAND, BUILDINGS, MACHINERY, TOTAL), ASSESSED VALUATIONS (RURAL, ALL OTHER, MACHINERY, TOTAL ASSESSED), FINAL EQUALIZED VALUE.

Cass County, Minnesota, for Taxes for the Year 1957.

Table with columns: SOLD FOR TAXES, VALUATIONS BY SCHOOL DISTRICTS AS EQUALIZED BY DEPARTMENT OF TAXATION, Tax including State Homestead, State Tax on Non-Homestead, SPECIAL TAXES, TOTAL TAXES, PAID, WHEN PAID, Number of Receipt, March Settlement 1958, June Settlement 1958, Penalty, November Settlement 1958, Penalty, Collections to First Monday in January 1959, Penalty, Delinquent on First Monday in January 1959, Total Delinquent Tax and Penalty, REMARKS.

142-31 Sunrise Beach Shingabe Island

W-8-B 3811's 1st Add'n to Gitchee Gumee Beach Chipewa Point Kabekona Springs Oitway on

Assessment Roll and Tax List of Real Property in the Town of Shingobee

Indicate Type of Property: R-Residential, C-Commercial, I-Industrial, U-Utility, F-Farm, L-Lakeshore, T-Timber, M-Mineral

Form 50 (56) MILLING-SALE PROPERTY, MINNESOTA

Table with columns: IN WHOSE NAME ASSESSED, TO WHOM TRANSFERRED, SUBDIVISION, Sec. or Lot, Town or Block, Rng., Number of Acres of Land, No. School District, Indicate Homestead, Indicate Agricultural, Indicate Type of Property, TRUE AND FULL VALUATIONS (LAND, BUILDINGS, MACHINERY, TOTAL), ASSESSED VALUATIONS (RURAL, ALL OTHER, MACHINERY, TOTAL ASSESSED VALUE), FINAL EQUALIZED VALUE.

Mary Kathryn Helscher
Eloise E. Allensworth
Chas. C. Ball

Ball's 1st addn. to Gitchee Gumee Beach
11.48 acs. of Lot 7 Sec. 36-141-31

Cass County, Minnesota, for Taxes for the Year 1957.

Table with columns: SOLD FOR TAXES, VALUATIONS BY SCHOOL DISTRICTS AS EQUALIZED BY DEPARTMENT OF TAXATION, Tax including State Homestead, State Tax on Non-Homestead, SPECIAL TAXES, TOTAL TAXES, PAID, WHEN PAID, Number of Receipt, March Settlement 1958, June Settlement 1958, November Settlement 1958, Penalty, Collections to First Monday in January 1959, Delinquent on First Monday in January 1959, Total Delinquent Tax and Penalty, REMARKS.

156 3986 98 4084 2356 1728

142-31 Ball's 1st Addition Ch Shingobee Gitchee Gumee Beach

Wa-Ra-Na-Ne-Ray Breezezy Point Gitchee Gumee Helgits

Assessment Roll and Tax List of Real Property in the Town of Shingobee

Indicate Type of Property: R-Residential, C-Commercial, I-Industrial, U-Utility, F-Farm, L-Lakeshore, T-Timber, M-Mineral

Form 30 (56) JULY 1957

Table with columns: IN WHOSE NAME ASSESSED, TO WHOM TRANSFERRED, SUBDIVISION, Sec. or Lot, Town or Block, Rng., Number of Acres of Land, No. School District, Indicate Homestead, Indicate Agricultural, Indicate Type of Property, TRUE AND FULL VALUATIONS (LAND, BUILDINGS, MACHINERY, TOTAL), ASSESSED VALUATIONS (RURAL, ALL OTHER, MACHINERY, TOTAL ASSESSED), Total Assessed Value as Equalized by the Board of Review, FINAL EQUALIZED VALUE.

142-31
Ball's Ist Addition
Gitchee Gumee Beach
Kabeona Spr
Breezy Point
Gitchee Gumee Beach
Ojibway

Cass County, Minnesota, for Taxes for the Year 1957.

Table with columns: SOLD FOR TAXES, VALUATIONS BY SCHOOL DISTRICTS AS EQUALIZED BY DEPARTMENT OF TAXATION (District No., Rate, etc.), Tax on Non-Homestead, State Tax on Non-Homestead, SPECIAL TAXES, TOTAL TAXES, PAID, WHEN PAID, Number of Receipt, March Settlement, June Settlement, November Settlement, Penalty, Collections to First Monday in January 1959, Delinquent on First Monday in January 1959, Total Delinquent Tax and Penalty, REMARKS.

Wa-Ba-Na-Ne-Ray
Nurise Heights
Charition Beach
Crescent Beach
Ist Addition

Assessment Roll and Tax List of Real Property in the Town of Shingobee

* Indicate Type of Property: R-Residential, C-Commercial, I-Industrial, U-Utility, F-Farm, L-Lakeshore, T-Timber, M-Mineral

Form 30 (56) MILLER-OLIVE COMPANY, MINNEAPOLIS

Table with columns: IN WHOSE NAME ASSESSED, TO WHOM TRANSFERRED, DESCRIPTION OF PROPERTY, TRUE AND FULL VALUATIONS, ASSESSED VALUATIONS, and FINAL EQUALIZED VALUE.

Cass County, Minnesota, for Taxes for the Year 1957.

Table with columns: VALUATIONS BY SCHOOL DISTRICTS AS EQUALIZED BY DEPARTMENT OF TAXATION, SOLD FOR TAXES, SPECIAL TAXES, TOTAL TAXES, PAID, WHEN PAID, Number of Receipt, March Settlement, June Settlement, November Settlement, Collections to First Monday in January, Delinquent on First Monday in January, Total Delinquent Tax and Penalty, and REMARKS.

142-31 Ball's 1st Addition Gummy Beach Gitchee Gumee Point Breezy Point Kabekona Spr Breezy Point Ojibway

Wa-Ba-Na-No-Ray rise Heights Charitton Beach Smoke Crescent Beach spent Beach

Assessment Roll and Tax List of Real Property in the Town of Shimoda

* Indicate Type of Property: R-Residential, C-Commercial, I-Industrial, U-Utility, F-Farm, L-Lakeshore, T-Timber, M-Mineral

Cass County, Minnesota, for Taxes for the Year 1957.

Form 3C (36) ILLINOIS STATE BOARD OF EQUALIZATION

IN WHOSE NAME ASSESSED	TO WHOM TRANSFERRED	DESCRIPTION OF PROPERTY					TRUE AND FULL VALUATIONS										FINAL EQUALIZED VALUE		
		SUBDIVISION	Sec. or Lot	Town or Block	Rng.	Number of Acres of Land	LAND Exclusive of Structures and Improvements	BUILDINGS and Other Structures	MACHINERY Permanently Attached to Real Estate	TOTAL True and Full Value	RURAL		ALL OTHER			MACHINERY Permanently Attached to Real Estate		TOTAL ASSESSED VALUE	Total Assessed Value as Equalized by the Board of Review
											Acres	100ths	Homestead Up to \$4,000 20%	Over \$4,000 and Non-Homestead 33 1/3%	Timber Land Class 3e 20%				
Theodore P. & Ella H. Rasmussen		Crescent Beach	1	1															
"	"	"	2	2															
"	"	"	3	3															
"	"	"	4	4															
"	"	"	5	5															
"	"	"	6	6															
Helen McGuire & Daniel B. Debury			7	7															
Clinton J. & Margaret Adams			8	8															
"	"	"	9	9															
Roscoe R. & Rose M. Halp			10	10															
"	"	"	11	11															
"	"	"	12	12															
"	"	"	13	13															
Lorraine Jensen			14	14															
Onofrius Christianson & Sigette C. H. H. H.			15	15															
"	"	"	16	16															
Hermit H. & Oriole E. Christianson			17	17															
J. B. & Mary Allen			18	18															
"	"	"	19	19															
Alice S. Jensen			20	20															

SOLD FOR TAXES	VALUATIONS BY SCHOOL DISTRICTS AS EQUALIZED BY DEPARTMENT OF TAXATION						Tax including State Homestead	State Tax on Non-Homestead	SPECIAL TAXES	TOTAL TAXES	PAID	WHEN PAID	Number of Receipt	March Settlement 1958	June Settlement 1958	Penalty	November Settlement 1958	Penalty	Collections to First Monday in January 1959	Penalty	Delinquent on First Monday in January 1959	Total Delinquent Tax and Penalty	REMARKS	
	District No.	District No.	District No.	District No.	District No.	District No.																		
	Rate	Rate	Rate	Rate	Rate	Rate																		
1																								
2																								
3																								
4																								
5																								
6																								
7																								
8																								
9																								
10																								
11																								
12																								
13																								
14																								
15																								
16																								
17																								
18																								
19																								
20																								

142-31 Ball's 1st Addition, Ch... Crescent Beach

Wa-Ba-Na-Ne-Hay... Charition Beach... Smokey's Addition

Assessment Roll and Tax List of Real Property in the Town of Shingobee

Cass County, Minnesota, for Taxes for the Year 1957.

Table with columns: IN WHOSE NAME ASSESSED, TO WHOM TRANSFERRED, DESCRIPTION OF PROPERTY, TRUE AND FULL VALUATIONS, ASSESSED VALUATIONS, VALUATIONS BY SCHOOL DISTRICTS AS EQUALIZED BY DEPARTMENT OF TAXATION, SOLD FOR TAXES, PAID, WHEN PAID, etc.

142-31 Ball's 1st Addition Wa-Ba-Na-Ne-Rey Gitchee Gumee Beach Rezy Point Gitchee Gumee Beach Crescent Beach 1st Addition

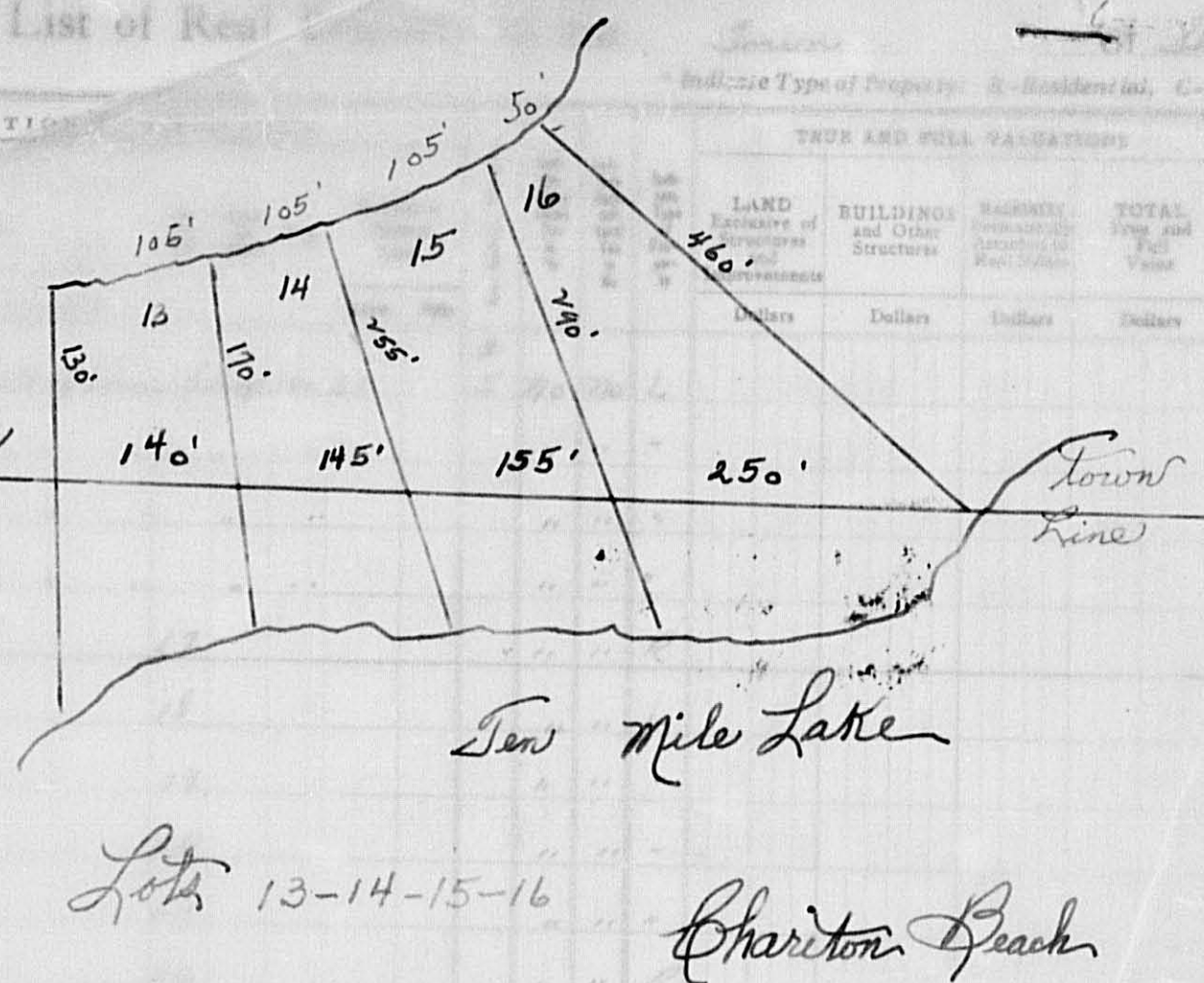
Park Point Sunrise Heights Charlton Beach Smokey's Addition 1st Addition

Form 5C (56) MARS-STATE BOARD, MINNAPOLIS

IN WHOSE NAME ASSESSED TO WHOM TRANSFERRED

James M. Schwartz + Evelyn Leher
Edward M. + Jean M. Cook
Sam V. Carpenter + Mildred
Arthur B. + Evelyn S. Hunt
J.M. Brandt
Helen O. Reese
Ethel Kridtbauch
Geo. Lundgren + Mildred Lundgren
E. Roy Sretner
Helen O. Reese
George E. + Muriel Martens
Carl H. + Thelma O. Bolund
E. Roy Sretner
Helen O. Reese
Adam S. Reisz
Alpha H. Miner

Shingobee Twp
Hiram Twp
Shingobee Twp
1957



ASSESSED VALUATIONS							TOTAL ASSESSED VALUE	Total Assessed Value as Equalized by the Board of Review	FINAL EQUALIZED VALUE
RURAL		ALL OTHER			MACHINERY				
Homestead Up to \$4,000 20%	Over \$4,000 and Non-Homestead 33 1/3%	Timber Land Class 3e 20%	Homestead Up to \$4,000 25%	Over \$4,000 and Non-Homestead 40%	Permanently Attached to Real Estate 33 1/3%		Dollars	Dollars	Dollars

SOLD FOR TAXES	VALUATIONS BY SCHOOL DISTRICTS AS EQUALIZED BY DEPARTMENT OF TAXATION						Tax including State Homestead	State Tax on Non-Homestead	SPECIAL TAXES	TOTAL TAXES	PAID	WHEN PAID	Number of Receipt	March Settlement 1958	June Settlement 1958	Penalty	November Settlement 1958	Penalty	Collections to First Monday in January 1959	Penalty	Delinquent on First Monday in January 1959	Total Delinquent Tax and Penalty	REMARKS
	District No.	District No.	District No.	District No.	District No.	District No.																	
1							10	256	06	262	1	PAID IN FULL MAY 31 1958	13595		262							5103	
2							10	256	06	262	2	PAID IN FULL MAY 31 1958	3812		262							7450	
3							10	256	06	262	3	PAID IN FULL MAY 31 1958	3594		262							5104	
4							15	382	10	392	4	Part Paid MAY 31 1958	3593		392		9606					5105	
5							367	9364	242	9606	5	Balance Paid JUL 26 1958	15150										
6							20	510	14	524	6	PAID IN FULL MAY 31 1958	13664		524							5107	
7							20	510	14	524	7	PAID IN FULL JAN 29 1957	128	524								7168	
8							20	510	14	524	8	PAID IN FULL FEB 28 1958	317	524									
9							20	510	14	524	9	PAID IN FULL MAY 31 1958	13664		524							5107	
10							H 132	3368		3368	10	PAID IN FULL MAY 7 1958	8068		3368							5108	
11							20	510	14	524	11	PAID IN FULL MAY 31 1958	9937		524							4764	
12							20	510	14	524	12										524	576	
13							20	510	14	524	13	PAID IN FULL MAY 31 1958	13664		524							5107	
14							20	510	14	524	14	PAID IN FULL MAY 6 1958	3062		524							5106	
15							20	510	14	524	15	PAID IN FULL MAY 6 1958			524								
16							H 72	1836		1836	16	PAID IN FULL MAY 15 1958	8263		1836							5102	
17											17												
18											18												
19											19												
20											20												
							H 204	592	203 08	396			207 04		10 48	95 26	96 06				524		
								796															

142-31
Chariton Beach Sunrise Heights - Ba-Na-Ne-Rey
Chariton Beach Reedy F
Crescent Beach Addition
Park Point
Hanson's Point
Shady Lane
Smoky's Addition
To Walker
Piggotts Addition



01 *Shingobee*
 * Indicate Type of Property: R-Residential, C-Commercial, I-Industrial, U-Utility, F-Farm, L-Lakeshore, T-Timber, M-Mineral

IN WHOSE NAME ASSESSED	TO WHOM TRANSFERRED	SUBDIVISION		No. School District	Indicate Homestead	Indicate Agricultural	Indicate Property	TRUE AND FULL VALUATIONS				ASSESSED VALUATIONS					Total Assessed Value as Equalized by the Board of Review	FINAL EQUALIZED VALUE			
		Sec. or Lot	Town or Block					Reg.	Number of Acres of Land	LAND Exclusive of Structures and Improvements	BUILDINGS and Other Structures	MACHINERY Permanently Attached to Real Estate	TOTAL True and Full Value	RURAL		ALL OTHER			TOTAL ASSESSED VALUE		
		Acres	100ths					Dollars	Dollars	Dollars	Dollars	Dollars	Dollars	Homestead 20%	Over \$4,000 and Non-Homestead 33 1/3%	Timber Land Class 3e 20%			Homestead 25%	Over \$4,000 and Non-Homestead 40%	MACHINERY Permanently Attached to Real Estate 33 1/3%
James M. Schwartz & E. Schwartz	Edward N. & Jean M. Cook	Chariton Beach Sub 3 Sec. 34-141-31																			
Sam V. Carpenter & Mildred M. 2	Arthur B. & Evelyn S. Hunt																				
J.M. Brandt																					
Helen C. Reese			17																		
Allice Kidelbaugh	C.P. Helton		18																		
George E. & Mauriel Mertens	Carl E. & J. B. B. B. B.		19																		
Elmer S. Erickson			20																		
E. Roy Sletner			21																		
Helen C. Reese			22																		
Adam S. Reisz			23																		
Alpha H. Miner			24																		
			25																		
			26																		
			27																		
			28																		
			29																		
			30																		

Cass County, Minnesota, for Taxes for the Year 1957.

SOLD FOR TAXES	VALUATIONS BY SCHOOL DISTRICTS AS EQUALIZED BY DEPARTMENT OF TAXATION						Tax including State Homestead	State Tax on Non-Homestead	SPECIAL TAXES	TOTAL TAXES	PAID	WHEN PAID	Number of Receipt	March Settlement 1958	June Settlement 1958	Penalty	November Settlement 1958	Penalty	Collections to First Monday in January 1959	Delinquent on First Monday in January 1959	Total Delinquent Tax and Penalty	REMARKS
	District No.	District No.	District No.	District No.	District No.	District No.																
	Rate	Rate	Rate	Rate	Rate	Rate																
1						10	256	06	262	1	PAID IN FULL	MAY 3 1 1958	13595								5103	
2						10	256	06	262	2	PAID IN FULL	MAY 3 1 1958	3812								7450	
3						10	256	06	262	3	PAID IN FULL	MAY 3 1 1958	3594								5104	
4						15	382	10	392	4	Balance Paid	JUL 26 1958									5105	
5						367	9364	242	9606	5	Balance Paid	JUL 26 1958									9606	
6						20	510	14	524	6	PAID IN FULL	MAY 3 1 1958	13664								5107	
7						20	510	14	524	7	PAID IN FULL	JAN 2 9 1957	128	524							7168	
8						20	510	14	524	8	PAID IN FULL	FEB 28 1958	317	524							5108	
9						20	510	14	524	9	PAID IN FULL	MAY 3 1 1958	13664								5109	
10						H 132	3368		3368	10	PAID IN FULL	MAY 7 1958	8868								5109	
11						20	510	14	524	11	PAID IN FULL	MAY 3 1 1958	9937								4764	
12						20	510	14	524	12											524	
13						20	510	14	524	13	PAID IN FULL	MAY 3 1 1958	13664								5107	
14						20	510	14	524	14	PAID IN FULL	MAY 6 1958	3062								5108	
15						20	510	14	524	15	PAID IN FULL	MAY 6 1958									"	
16						H 72	1836		1836	16	PAID IN FULL	MAY 1 1958	2263								5102	
17										17												
18										18												
19										19												
20										20												
						H 204	592		20308	396			20704									1048
							996							9526								9606
																						524

142-31
 Chariton Beach
 Sunrise Heights
 Ba-Na-Ne-Roy
 Reedy P.
 Crescent Beach
 1st Addition
 Hanson's Point
 Shady Lane
 Smoke's Addition
 To Walker
 Island

Assessment Roll and Tax List of Real Property in the Town of Shingobee

Indicate Type of Property: R-Residential, C-Commercial, I-Industrial, U-Utility, F-Farm, L-Lakeshore, T-Timber, M-Mineral

Table with columns: IN WHOSE NAME ASSESSED, TO WHOM TRANSFERRED, SUBDIVISION, Sec. of Lot, Town or Block, Rng., Number of Acres of Land, No. School District, Indicate Homestead, Indicate Agricultural, Indicate Type of Property, TRUE AND FULL VALUATIONS (LAND, BUILDINGS, MACHINERY, TOTAL), ASSESSED VALUATIONS (RURAL, ALL OTHER, MACHINERY, TOTAL ASSESSED VALUE), Total Assessed Value as Equalized by the Board of Review, FINAL EQUALIZED VALUE.

Cass County, Minnesota, for Taxes for the Year 1957.

Table with columns: SOLD FOR TAXES, VALUATIONS BY SCHOOL DISTRICTS AS EQUALIZED BY DEPARTMENT OF TAXATION (District No., Rate), Tax including State Homestead, State Tax on Non-Homestead, SPECIAL TAXES, TOTAL TAXES, PAID, WHEN PAID (Month Day Year), Number of Receipt, March Settlement 1958, June Settlement 1958, November Settlement 1958, Penalty, Collections to First Monday in January 1959, Delinquent on First Monday in January 1959, Total Delinquent Tax and Penalty, REMARKS.

Belford's 1st Add'g to Plat of Shingobee Island
Helford's 1st Add'g to Plat of Shingobee Island
Chariton Beach
Sunrise Heights
Park Point

Hanson's Point
Shady Lane

Assessment Roll and Tax List of Real Property in the Town of Shingobee

Cass County, Minnesota, for Taxes for the Year 1957.

Indicate Type of Property: R-Residential, C-Commercial, I-Industrial, U-Utility, F-Farm, L-Lakeshore, T-Timber, M-Mineral

Table with columns: IN WHOSE NAME ASSESSED, TO WHOM TRANSFERRED, SUBDIVISION, TRUE AND FULL VALUATIONS, ASSESSED VALUATIONS, VALUATIONS BY SCHOOL DISTRICTS AS EQUALIZED BY DEPARTMENT OF TAXATION, PAID, WHEN PAID, Number of Receipt, March Settlement, June Settlement, November Settlement, Collections to First Monday in January, Delinquent on First Monday in January, Total Delinquent Tax and Penalty, REMARKS.

142-31
Bellevue's 1st Add'n to Chariton Beach
Sunrise Heights
Park Point

Hanson's Point
Shady Lane

Assessment Roll and Tax List of Real Property in the Town of Shingobee

Cass County, Minnesota, for Taxes for the Year 1957.

Form 5C (56) JULY 1956 EDITION, MINNAPOLIS

Indicate Type of Property: R-Residential, C-Commercial, I-Industrial, U-Utility, F-Farm, L-Lakeshore, T-Timber, M-Mineral

Table with columns: IN WHOSE NAME ASSESSED, TO WHOM TRANSFERRED, SUBDIVISION, DESCRIPTION OF PROPERTY, TRUE AND FULL VALUATIONS, ASSESSED VALUATIONS, VALUATIONS BY SCHOOL DISTRICTS AS EQUALIZED BY DEPARTMENT OF TAXATION, SOLD FOR TAXES, PAID, WHEN PAID, Number of Receipt, March Settlement 1958, June Settlement 1958, November Settlement 1958, Collections to First Monday in January 1959, Delinquent on First Monday in January 1959, Total Delinquent Tax and Penalty, REMARKS.

142-31 Park Point
Hanson's Point
Shady Lane
Beleford's Ark Add to Plat of Shingobee
Walden to Chariton Beach

Henry Heathman
Henry + Shirley S. Heathman
Henry Heathman + W.F. Sethney
Howard A. + Florence Helmbrecht

Shady Lane
Part of NW 1/4 Sec. 30-141-31

180 4584 120 4704 2744 1960

