

Assessment & Tax List - 1954

Shingobee

SUMMARY OF TAX COLLECTION

Original Levy	- - - - -	\$26,654.18	
Additions	- - - - -	\$ 35.36	
			\$26,689.54
Abatements	- - - - -	\$ 288.29	
			\$26,401.25
COLLECTIONS			
March Settlement	- - - - -	\$4,780.85	
June Settlement	- - - - -	\$3,645.98	
November Settlement	- - - - -	\$ 669.75	
January Settlement	- - - - -	\$ 45.17	\$25,171.75
			\$
Over Collected	- - - - -	\$ 130.67	
Under Collected	- - - - -	\$.62	
Delinquent	- - - - -	\$1,260.15	\$1,229.50
Total	- - - - -		\$26,401.25

Allendale
 Reel Forest
 Sunrise Beach
 of Shingopee Island
 and
 Orlinova Point
 Kabeona
 Springs

COLLECTIONS OF TAXES OF 1954 *Town* OF *Shingobee*, CASS COUNTY, MINNESOTA

FUNDS	MARCH SETTLEMENT 1954	JUNE SETTLEMENT 1954	NOV. SETTLEMENT 1954	Amount Collected from Nov. 1954 to First Monday in Jan. 1955	REDUCTIONS	Total Reductions and Collected	BALANCE UNCOLLECTED	ADDITIONS	Total Uncollected to First Monday in January, 1955
State-Non-Homestead, State-Homestead,	11864 9368	26355 27820	11611 13531	57 98					
County Revenue, County Road and Bridge, County Welfare, County Bonds and Interest, <i>R. + O. Linking</i>	67009 35543 119644 27342 4768	197991 105548 355295 81196 14158	96780 51334 172860 37480 6886	700 371 1249 285 50					
Town Revenue, Town Road and Bridge, Town Drag, Town State Loan, <i>Pay Chow Cemetery</i>	7151 28606 2384 5760 5960 2384	21237 88948 7079 17687 17687 7079	10329 41515 3443 8607 8607 3443	75 299 25 62 62 25					
School Local 1 Mill, School Special, School State Loan, Deficiency Tuition Transportation <i>C. O. D. J.</i>	2384 98136 9869 3575 25272 10846	7079 245126 29307 10618 75108 32210	3443 126745 14253 5764 36527 15665	26 622 103 37 264 113					
	478085	1364598	669975	4517					

	LOCAL 1 MILL	SPECIAL	STATE LOAN	Deficiency	Transport.	C. O.	D. J.	TOTALS
MARCH SETTLEMENT								
School District No. <i>G#5 Na#5</i>	842 1542	21056 77080		3487 6382	1263 2312	8936 16356	3832 7014	39416 110686
Totals	2384	98136		9869	3575	25292	10846	150102
JUNE SETTLEMENT								
School District No. <i>G#5 Na#5</i>	4351 2728	108774 136402		18013 11244	6526 4092	46164 28744	19797 12413	203625 195873
Totals	7079	245176		29307	10618	75108	32210	379498
NOVEMBER SETTLEMENT								
School District No. <i>G#5 Na#5</i>	1816 1627	45401 81344		7518 6735	2724 2440	19268 17261	8263 7402	84980 116809
Totals	3443	126745		14253	5164	36529	15665	201799
NOVEMBER to JANUARY								
School District No. <i>G#5 Na#5</i>	25	622		103	37	264	113	1164
Totals	25	622		103	37	264	113	1164
ADDITIONS								
School District No.								
Totals								
REDUCTIONS								
School District No.								
Totals								

Reliance
 Sunlight Beach
 Shingobee Island
 Chippewa Point
 Lakeona Springs

Assessment Roll and Tax List of Real Property in the Town of Springbee, Cass County, Minnesota, for Taxes for the Year 1954.

Cass County, Minnesota, for Taxes for the Year 1954.

Table with columns: IN WHOSE NAME ASSESSED, TO WHOM TRANSFERRED, DESCRIPTION OF PROPERTY, TRUE AND FULL VALUATIONS, ASSESSED VALUATIONS, VALUATIONS BY SCHOOL DISTRICTS AS EQUALIZED BY DEPARTMENT OF TAXATION, SOLD FOR TAXES, PAID, WHEN PAID, Number of Receipt, March Settlement 1955, June Settlement 1955, November Settlement 1955, Collections to First Monday in January 1956, Delinquent on First Monday in January 1956, Total Delinquent Tax and Penalty, REMARKS.

Vertical text on the right edge of the page, including 'Springbee Island' and 'Springbee Point'.

Assessment Roll and Tax List of Real Property in the Town of Winnetka, Cass County, Minnesota, for Taxes for the Year 1954.

Cass County, Minnesota, for Taxes for the Year 1954.

Table with columns: IN WHOSE NAME ASSESSED, TO WHOM TRANSFERRED, DESCRIPTION OF PROPERTY, TRUE AND FULL VALUATIONS, ASSESSED VALUATIONS, VALUATIONS BY SCHOOL DISTRICTS AS EQUALIZED BY DEPARTMENT OF TAXATION, TAXES, PAID, WHEN PAID, Number of Receipt, March Settlement 1955, June Settlement 1955, November Settlement 1955, Collections to First Monday in January 1956, Delinquent on First Monday in January 1956, Total Delinquent Tax and Penalty, REMARKS.

Assessment Roll and Tax List of Real Property in the Town of Shingabe, Cass County, Minnesota, for Taxes for the Year 1954.
*Indicate Type of Property: R-Residential, C-Commercial, I-Industrial, U-Utility, F-Farm

Form 5CD (54) VALUE-BASED COUNTY, MINNESOTA

Table with columns for IN WHOSE NAME ASSESSED, TO WHOM TRANSFERRED, DESCRIPTION OF PROPERTY, TRUE AND FULL VALUATIONS, ASSESSED VALUATIONS, VALUATIONS BY SCHOOL DISTRICTS AS EQUALIZED BY DEPARTMENT OF TAXATION, TAXES, PAID, WHEN PAID, Number of Receipt, March Settlement, June Settlement, Penalty, November Settlement, Collections to First Monday in January, Delinquent on First Monday in January, Total Delinquent Tax and Penalty, REMARKS.

Assessment Roll and Tax List of Real Property in the Town of Spring Lake, Cass County, Minnesota, for Taxes for the Year 1954.

Cass County, Minnesota, for Taxes for the Year 1954.

*Indicate Type of Property: R-Residential, C-Commercial, I-Industrial, U-Utility, F-Farm

Table with columns for property details (name, address, valuation), taxes (school districts, state, special), and payments (PAID, WHEN PAID, etc.). Includes handwritten notes and corrections throughout.

Assessment Roll and Taxation in the County of Shingobee, Minnesota

Cass County, Minnesota, for Taxes for the Year 1954.

IN WHOSE NAME ASSESSED	TO WHOM TRANSFERRED	Lot 3 - 26-141-31	Portage Lake	Sec. 26	Sec. 25	TOTAL True and Full Value	Homestead	20%	33 1/3%
		Dollars	Dollars	Dollars	Dollars	Dollars	Dollars	Dollars	Dollars
E. Elizabeth & Hubert H. Lee Ethel B. Viker, et al		378							
Ethel B. Viker, et al		405							
Louis Krueger		312							
State of Minnesota									
State of Minnesota									
Edmund C. & Mathilda J. Thomas		105							
U. S. of America									
U. S. of America									
U. S. of America									
U. S. of America									
Oluf & Bertha Jensen		150							
Alvina Kubo		125							
U. S. of America									
Al E. Stock, Glenn W. Witham		4596							
Lawrence J. Chenpeter									
Robert J. & Edward J. Fichter		6							
		25408							
		1597							
		500							
		2697							
		261							
		564							
		725							



This is according to information from A. St. Jensen, total acreage of Lot 3 sec 26 is 33.75 acres.

MACHINERY Permanently Attached to Real Estate 33 1/3%	TOTAL ASSESSED VALUE	Total Assessed Value as Equalized by the Board of Review	FINAL EQUALIZED VALUE	SOLD FOR TAXES	VALUATIONS BY SCHOOL DISTRICTS AS EQUALIZED BY DEPARTMENT OF TAXATION						Tax Including State Homestead	State Tax on Non-Homestead	SPECIAL TAXES	TOTAL TAXES	PAID	WHEN PAID	Number of Receipt	March Settlement 1955	June Settlement 1955	Penalty	November Settlement 1955	Penalty	Collections to First Monday in January 1956	Penalty	Delinquent on First Monday in January 1956	Total Delinquent Tax and Penalty	REMARKS	
					District No. 5	District No. 5	District No. 5	District No. 5	District No. 5	District No. 5																		
	126		126	1									2326	1	2nd Half Paid	AUG 31 1955												
				2										2														
	135		135	3										3														
				4									2492	4	2nd Half Paid	AUG 31 1955	12989		2409									
				5										5														
	104		104	6									1920	6	2nd Half Paid	OCT 31 1955												
				7									1920	7	1st Half Paid	MAY 31 1955	6803		1920									
				8										8														
				9										9														
	21		21	10									376	10	PAID IN FULL	FEB 11 1955	1078		376									
				11										11														
				12										12														
				13										13														
				14										14														
	180		180	15									3230	15	PAID IN FULL	MAY 24 1955	6269		3230									
	10		10	16									180	16	2nd Half Paid	OCT 7 1955	13727		93									
				17										17														
	60		60	18									1076	18	1st Half Paid	MAY 17 1955	5430											
				19										19														
	25		25	20									448	20	PAID IN FULL	MAY 31 1955	72194		462									
	201		201										13724															
	564		564										296															
	965		965										14020															

Cass County, Minnesota, for Taxes for the Year 1954. Shingobee Island, Chippewa Point, Karensa Springs

Assessment Roll and Tax List of Real Property in the Town of *Down* of County of *Shingobee*,
*Indicate Type of Property: R-Residential, C-Commercial, I-Industrial, U-Utility, F-Farm

Cass County, Minnesota, for Taxes for the Year 1954.

Table with columns: IN WHOSE NAME ASSESSED, TO WHOM TRANSFERRED, DESCRIPTION OF PROPERTY, TRUE AND FULL VALUATIONS, ASSESSED VALUATIONS, VALUATIONS BY SCHOOL DISTRICTS AS EQUALIZED BY DEPARTMENT OF TAXATION, and REMARKS. Includes rows for lots 1-20, subdivided as NE 1/4 of NE 1/4, NW 1/4 of NE 1/4, SW 1/4 of NE 1/4, SE 1/4 of NE 1/4, NE 1/4 of NW 1/4, NW 1/4 of NW 1/4, SW 1/4 of NW 1/4, SE 1/4 of NW 1/4, NE 1/4 of SW 1/4, NW 1/4 of SW 1/4, SW 1/4 of SW 1/4, SE 1/4 of SW 1/4, NE 1/4 of SE 1/4, NW 1/4 of SE 1/4, SW 1/4 of SE 1/4, SE 1/4 of SE 1/4.

Officially Certified True and Correct by *Shingobee Island* *Chippewa Point* *Kabeokona Springs*

Assessment Roll and Tax List of Real Property in the Town of Shungobe, Cass County, Minnesota, for Taxes for the Year 1954.

Table with columns: IN WHOSE NAME ASSESSED, TO WHOM TRANSFERRED, DESCRIPTION OF PROPERTY, TRUE AND FULL VALUATIONS, ASSESSED VALUATIONS, VALUATIONS BY SCHOOL DISTRICTS AS EQUALIZED BY DEPARTMENT OF TAXATION, TAXES, PAID, WHEN PAID, Number of Receipt, March Settlement 1955, June Settlement 1955, November Settlement 1955, Collections to First Monday in January 1956, Delinquent on First Monday in January 1956, Total Delinquent Tax and Penalty, REMARKS.

(continued on next page)

Shungobe Island and Chippewa Point and Lakeona Springs

Assessment Roll and Tax List of Real Property in the County of Shuster, Minnesota
*Indicate Type of Property: R-Residential, C-Commercial, I-Industrial, U-Utility, F-Farm

IN WHOSE NAME ASSESSED	TO WHOM TRANSFERRED	DESCRIPTION OF PROPERTY					TRUE AND FULL VALUATIONS							ASSESSED VALUATIONS					FINAL EQUALIZED VALUE
		SUBDIVISION	Sec. or Lot	Town or Block	Rng	Number of Acres of Land	LAND Exclusive of Structures and Improvements	BUILDINGS and Other Structures	MACHINERY Permanently Attached to Real Estate	TOTAL True and Full Value	RURAL		ALL OTHER		MACHINERY Permanently Attached to Real Estate	TOTAL ASSESSED VALUE	Total Assessed Value as Equalized by the Board of Review		
Acres	100ths										Homestead Up to \$4,000 20%	Over \$4,000 and Non-Homestead 33 1/3%	Homestead Up to \$4,000 25%	Over \$4,000 and Non-Homestead 40%					
U. S. of America		N E 1/4 of N E 1/4																	
Hazelton J. & Ragna S. Ellworth		N W 1/4 of N E 1/4	31 1/4		31														
"	"	S W 1/4 of N E 1/4																	
U. S. of America		S E 1/4 of N E 1/4																	
William P. & Mary Louise Humbach		N E 1/4 of N W 1/4																	
Meredith R. Hyatt	Helene L. Wyatt	N W 1/4 of N W 1/4																	
U. S. of America		S W 1/4 of N W 1/4																	
Arnold Nelson		S E 1/4 of N W 1/4																	
U. S. of America		N E 1/4 of S W 1/4																	
William P. & Mary Louise Humbach		N W 1/4 of S W 1/4																	
Joe H. Jung		S W 1/4 of S W 1/4																	
U. S. of America		S E 1/4 of S W 1/4																	
Eda Stahl		N E 1/4 of S E 1/4																	
U. S. of America		N W 1/4 of S E 1/4																	
U. S. of America		S W 1/4 of S E 1/4																	
U. S. of America		S E 1/4 of S E 1/4																	

Cass County, Minnesota, for Taxes for the Year 1954.

SOLD FOR TAXES	VALUATIONS BY SCHOOL DISTRICTS AS EQUALIZED BY DEPARTMENT OF TAXATION						Tax including State Homestead	State Tax on Non-Homestead	SPECIAL TAXES	TOTAL TAXES	PAID	WHEN PAID	Number of Receipt	March Settlement 1955	June Settlement 1955	November Settlement 1955	Penalty	Collections to First Monday in January 1956	Penalty	Delinquent on First Monday in January 1956	Total Delinquent Tax and Penalty	REMARKS
	District No.	District No.	District No.	District No.	District No.	District No.																

Ojibway
 Bay Point
 Assata
 Sunrise Beach
 Shingobe Island
 Chippewa Point
 Kabecona Springs

Assessment Roll and Tax List of Real Property in the Town of Shingle of Minnesota,
 *Indicate Type of Property: R-Residential, C-Commercial, I-Industrial, U-Utility, F-Farm

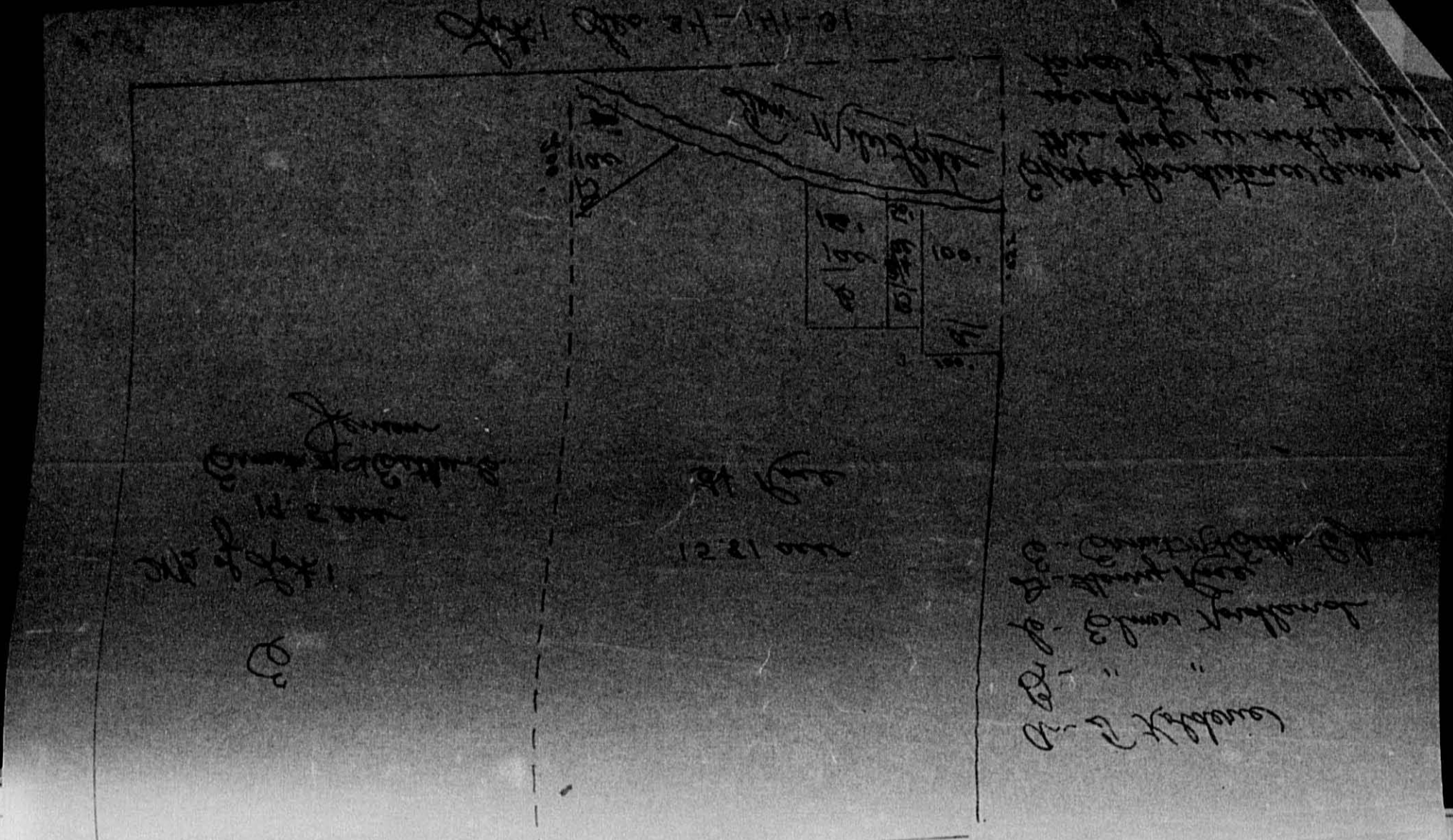
Cass County, Minnesota, for Taxes for the Year 1954.

IN WHOSE NAME ASSESSED TO WHOM TRANSFERRED		DESCRIPTION OF PROPERTY				TRUE AND FULL VALUATIONS					ASSESSED VALUATIONS					SOLD FOR TAXES	VALUATIONS BY SCHOOL DISTRICTS AS EQUALIZED BY DEPARTMENT OF TAXATION						PAID	WHEN PAID	Number of Receipt	March Settlement 1955	June Settlement 1955	November Settlement 1955	Penalty	Collections to First Monday in January 1956	Penalty	Delinquent on First Monday in January 1956	Total Delinquent Tax and Penalty	REMARKS														
						LAND EXCLUSIVE OF STRUCTURES AND IMPROVEMENTS			BUILDINGS AND OTHER STRUCTURES		MACHINERY PERMANENTLY ATTACHED TO REAL ESTATE	TOTAL TRUE AND FULL VALUE		RURAL			ALL OTHER		MACHINERY PERMANENTLY ATTACHED TO REAL ESTATE	TOTAL ASSESSED VALUE	Total Assessed Value as Equalized by the Board of Review	Final Equalized Value													District		Rate	Mills	Special Taxes	TOTAL TAXES								
		No. School District	Indicate Homestead Yes or No	Indicate Agricultural Yes or No	Indicate Type of Property	Acres	100ths	Dollars	Dollars	Dollars	Dollars	Dollars	Dollars	Dollars	Dollars		Dollars	Dollars	Dollars	Dollars	Dollars	Dollars													Dollars	Dollars	Dollars	Dollars	Dollars	Dollars	Dollars	Dollars	Dollars	Dollars	Dollars	Dollars	Dollars	Dollars
		No. School District	Indicate Homestead Yes or No	Indicate Agricultural Yes or No	Indicate Type of Property	Acres	100ths	Dollars	Dollars	Dollars	Dollars	Dollars	Dollars	Dollars	Dollars		Dollars	Dollars	Dollars	Dollars	Dollars	Dollars													Dollars	Dollars	Dollars	Dollars	Dollars	Dollars	Dollars	Dollars	Dollars	Dollars	Dollars	Dollars	Dollars	Dollars
Carl & Pauline Bugenstel	1			NE ¼ of NE ¼	33	41	31	40	5	70	100	240			240	80			80						14.36	42	17.78	1		PAID IN FULL MAY 31 1955	12/97	1478																
State of Minnesota	2			NW ¼ of NE ¼ Lot 1																																												
State of Minnesota	3			SW ¼ of NE ¼																																												
U. S. of America	4			SE ¼ of NE ¼																																												
U. S. of America	5																																															
U. S. of America	6			8 ½ of Lot 2 NE ¼ of NW ¼																																												
U. S. of America	7			NW ¼ of NW ¼ Lot 3																																												
U. S. of America	8			SW ¼ of NW ¼																																												
U. S. of America	9			SE ¼ of NW ¼																																												
U. S. of America	10																																															
State of Minnesota	11			NE ¼ of SW ¼																																												
Carl & Pauline Bugenstel	12			NW ¼ of SW ¼				40	70	100	240			240	80			80							14.36	42	17.78	1		PAID IN FULL MAY 31 1955	12/97	1478																
"	13			SW ¼ of SW ¼ Lot 4				30.25	"	"	309	375		684	228			228							40.90	120	42.10	1		PAID IN FULL MAY 31 1955	12/97	4210																
U. S. of America	14			SE ¼ of SW ¼ Lot 5																																												
U. S. of America	15																																															
U. S. of America	16			NE ¼ of SE ¼																																												
State of Minnesota	17			NW ¼ of SE ¼																																												
State of Minnesota	18			SW ¼ of SE ¼																																												
U. S. of America	19			SE ¼ of SE ¼																																												
	20							110.25			789	375		1164	388			388							69.62	204	71.66									7166												

Office of the Assessor
 City of Shingle
 Sunrise Beach
 Shingle Island
 Chippewa Point
 Kankakee Springs

Assessment and Tax List of Real Property in the Town of Shingle Lake, of Shingle Lake, Minnesota. *Indicate Type of Property: R-Residential, C-Commercial, I-Industrial, U-Utility, F-Farm

Table with columns: IN WHOSE NAME ASSESSED, TO WHOM TRANSFERRED, DESCRIPTION OF PROPERTY, TRUE AND FULL VALUATIONS, ASSESSED VALUATIONS, and FINAL EQUALIZED VALUE. Includes handwritten entries for property owners like Ernest M. & Esther C. Jensen and Henry Rose.



Cass County, Minnesota, for Taxes for the Year 1954.

Table with columns: VALUATIONS BY SCHOOL DISTRICTS AS EQUALIZED BY DEPARTMENT OF TAXATION, TAXES, PAID, WHEN PAID, Number of Receipt, March Settlement 1955, June Settlement 1955, November Settlement 1955, Collections to First Monday in January 1956, Delinquent on First Monday in January 1956, Total Delinquent Tax and Penalty, and REMARKS. Includes handwritten notes and dates.

Assessment Roll and Tax List of Real Property in the State of Minnesota

*Indicate Type of Property: R-Residential, C-Commercial, I-Industrial, U-Utility, F-Farm

Cass County, Minnesota, for Taxes for the Year 1954.

Table with columns for IN WHOSE NAME ASSESSED, TO WHOM TRANSFERRED, DESCRIPTION OF PROPERTY, TRUE AND FULL VALUATIONS, ASSESSED VALUATIONS, VALUATIONS BY SCHOOL DISTRICTS AS EQUALIZED BY DEPARTMENT OF TAXATION, SOLD FOR TAXES, PAID, WHEN PAID, Number of Receipt, March Settlement 1955, June Settlement 1955, Penalty, November Settlement 1955, Penalty, Collections to First Monday in January 1956, Penalty, Delinquent on First Monday in January 1956, Total Delinquent Tax and Penalty, and REMARKS.

Assessment Roll and Tax List of Real Property in the Town of Shogbee, Cass County, Minnesota, for Taxes for the Year 1954.
*Indicate Type of Property: R-Residential, C-Commercial, I-Industrial, U-Utility, F-Farm

Cass County, Minnesota, for Taxes for the Year 1954.

143-31

Table with multiple columns: IN WHOSE NAME ASSESSED, TO WHOM TRANSFERRED, DESCRIPTION OF PROPERTY, TRUE AND FULL VALUATIONS, ASSESSED VALUATIONS, VALUATIONS BY SCHOOL DISTRICTS AS EQUALIZED BY DEPARTMENT OF TAXATION, TAXES, PAID, WHEN PAID, Number of Receipt, March Settlement 1955, June Settlement 1955, Penalty, November Settlement 1955, Penalty, Collections to First Monday in January 1956, Penalty, Delinquent on First Monday in January 1956, Total Delinquent Tax and Penalty, REMARKS.

Handwritten note: R# 27742-76/52

Vertical text on the right edge of the page: Shogbee Island, Chippewa Point, Kabonara Springs

Assessment Roll and Tax List of Real Property in the Lower of Shingobee

*Indicate Type of Property: R - Residential, C - Commercial, I - Industrial, U - Utility, F - Farm

Cass County, Minnesota, for Taxes for the Year 1954.

Form 56D (54) - UNIFORM COUNTY, MINNESOTA

Main data table with columns for IN WHOSE NAME ASSESSED, TO WHOM TRANSFERRED, DESCRIPTION OF PROPERTY, TRUE AND FULL VALUATIONS, ASSESSED VALUATIONS, VALUATIONS BY SCHOOL DISTRICTS, TAXES, PAID, WHEN PAID, and REMARKS. Includes handwritten entries such as 'Ethel Peterson' and 'PAID IN FULL MAY 31 1955'.

142-3

Vertical text on the right edge of the page, including 'Shingobee Island Br' and 'Chippewa Point of Lakeona Springs'.

Assessment Roll and Tax List of Real Property in the Town of Shingobee, Cass County, Minnesota, for Taxes for the Year 1954.

*Indicate Type of Property: R-Residential, C-Commercial, I-Industrial, U-Utility, F-Farm

Form SCD (54) - MILLER-DAY COMPANY, MINNEAPOLIS

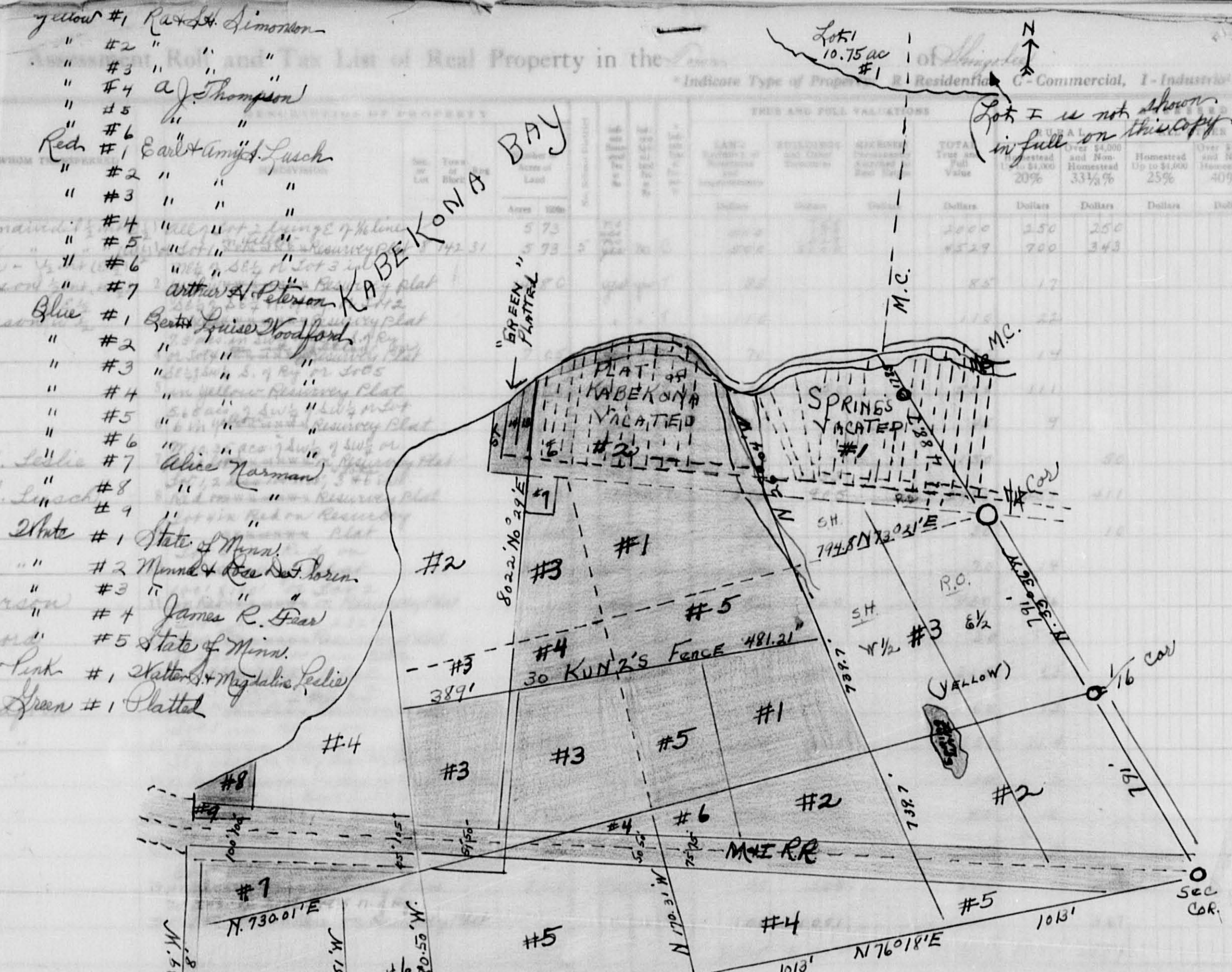
Table with columns: IN WHOSE NAME ASSESSED, TO WHOM TRANSFERRED, SUBDIVISION, TRUE AND FULL VALUATIONS (LAND, BUILDINGS, MACHINERY, TOTAL), ASSESSED VALUATIONS (RURAL, ALL OTHER, MACHINERY, TOTAL ASSESSED), Total Assessed Value, FINAL EQUALIZED VALUE. Includes handwritten entries for Ole & Inez Berg and Robert & Bessie Edlith.

Table with columns: SOLD FOR TAXES, VALUATIONS BY SCHOOL DISTRICTS AS EQUALIZED BY DEPARTMENT OF TAXATION, Tax Including State Homestead, State Tax on Non-Homestead, SPECIAL TAXES, TOTAL TAXES, PAID, WHEN PAID, Number of Receipt, March Settlement, June Settlement, November Settlement, Penalty, Collections to First Monday in January 1956, Delinquent on First Monday in January 1956, Total Delinquent Tax and Penalty, REMARKS. Includes handwritten payment and settlement details.

142-31

Shingobee Island, Chippewa Point, Kabeoksa Springs, etc.

Cass County, Minnesota, for Taxes for the Year 1954.



IN WHOSE NAME ASSESSED	TO WHOM	CHINERY	TOTAL ASSESSED VALUE	Total Assessed Value as Equalized by the Board of Review	FINAL EQUALIZED VALUE	SOLD FOR TAXES
R.O. + Vernie Simonson	unmain.		500			
Simon H. + Daisy Simonson	"		1043			
R.O. + Vernie Simonson	"					
Simon H. + Daisy Simonson	"					
R.O. + Vernie Simonson	"		17			
Simon H. + Daisy Simonson	"		22			
A.J. Thompson	"		17			
"	"		111			
"	"		9			
Walter S. + Magdaline H. Leike	"		50			700 FOR TAXES
Earl Raymond + Amy L. Leike	"		662			
"	"		10			
"	"		14			
Arthur H. + Carmen Peterson	"		186			
Bert + Louise Woodford	"		6			
Bert Woodford	"		63			
Bert + Louise Woodford	"		12			
"	"		110			
"	"		2			
"	"		10			
"	"		3			
Alice Norman	"		208			
"	"		367			
"	"		3419			

District No.	District No.	District No.	District No.	District No.	District No.	Tax including State Homestead	State Tax on Non-Homestead	SPECIAL TAXES	TOTAL TAXES	PAID	WHEN PAID	Number of Receipt	March Settlement 1955	June Settlement 1955	Penalty	November Settlement 1955	Penalty	Collections to First Monday in January 1956	Penalty	Delinquent on First Monday in January 1956	Total Delinquent Tax and Penalty	REMARKS
						12122	150		12302	12122	MAY 31 1955	1260	12302	6151		6151						
						19418	130		19548	19418	OCT 24 1955	14345	19548	9774		9774						
									304		MAY 31 1955	14544		152		152						
									394		MAY 31 1955			197		197						
									252		OCT 24 1955	14078		126		126						
									1992		MAY 31 1955	5874		996		996						
									162		MAY 31 1955			81		81						
									898		JUL 8 1955	2543				924						
									13532	214	MAY 31 1955	683		6873		6873						
									180	06	MAY 31 1955	7464		93		93						
									252		MAY 31 1955			126		126						
									3338		MAY 25 1955	6070		3090		348						
									108		JUN 17 1955	8257				54		54				
									162		OCT 31 1955			565		565						Refund w. #6761 4.03 8-12-55 9.68 abated
									1130		MAY 31 1955			108		108						
									216		MAY 31 1955	6832		987		987						
									1974		MAY 31 1955	5144		18		18						
									36		MAY 31 1955			90		90						
									180		MAY 31 1955			27		27						
									54		MAY 31 1955											
									4252	108	MAY 31 1955	1259		4360		4360						
									7502	192	MAY 31 1955			7694		7694						
									11470	856				41562		29025						9.68 abate
									639													

Resurvey Plat of 8-14201 on file in Registrar of Deeds Office
 Mapok 7-23-54
 Carmen Peterson #7 and 7
 Harris and Assessor

Assessment Roll and Tax List of Real Property in the Town of Douglas of Douglas County, Minnesota

*Indicate Type of Property: R-Residential, C-Commercial, I-Industrial, U-Utility, F-Farm

Table with columns: IN WHOSE NAME ASSESSED, TO WHOM TRANSFERRED, DESCRIPTION OF PROPERTY, TRUE AND FULL VALUATIONS, ASSESSED VALUATIONS, FINAL EQUALIZED VALUE.

Cass County, Minnesota, for Taxes for the Year 1954.

Table with columns: VALUATIONS BY SCHOOL DISTRICTS AS EQUALIZED BY DEPARTMENT OF TAXATION, TAXES, PAID, WHEN PAID, Number of Receipt, March Settlement, June Settlement, November Settlement, Collections to First Monday in January 1956, Delinquent on First Monday in January 1956, Total Delinquent Tax and Penalty, REMARKS.



Vertical text on the right edge of the page, possibly a page number or index reference.

Assessment Roll and Tax List of Real Property in the Town of Shingobee

Cass County, Minnesota, for Taxes for the Year 1954.

*Indicate Type of Property: R-Residential, C-Commercial, I-Industrial, U-Utility, F-Farm

Table with columns: IN WHOSE NAME ASSESSED, TO WHOM TRANSFERRED, DESCRIPTION OF PROPERTY, TRUE AND FULL VALUATIONS, ASSESSED VALUATIONS, VALUATIONS BY SCHOOL DISTRICTS AS EQUALIZED BY DEPARTMENT OF TAXATION, TAXES, PAID, WHEN PAID, Number of Receipt, March Settlement 1955, June Settlement 1955, November Settlement 1955, Collections to First Monday in January 1956, Delinquent on First Monday in January 1956, Total Delinquent Tax and Penalty, REMARKS.

State of Minn.
Minnie Agnes + Rose Anna De Siorin
James R. + Clara M. Gear

Subdivision descriptions:
1. Resurvey plat on Resurvey Plat 8 1/2 3 1
2. Lot 2 in white on Resurvey Plat
3. Lot 3 in white on Resurvey Plat
4. 1/2 of Lot 5 n. of Ryless on Resurvey Plat
6. 1/2 of Lot 5 in white on Resurvey Plat
7. NW 1/4 of NW 1/4
8. SW 1/4 of NW 1/4
9. SE 1/4 of NW 1/4
11. NE 1/4 of SW 1/4
12. NW 1/4 of SW 1/4
13. SW 1/4 of SW 1/4
14. SE 1/4 of SW 1/4
16. NE 1/4 of SE 1/4
17. NW 1/4 of SE 1/4
18. SW 1/4 of SE 1/4
19. SE 1/4 of SE 1/4

Summary row: 1725, 240, 400, 640, 116, 20, 136

Summary row: N 116, 20, 136, 2442, 10, 2452

Handwritten notes:
1st Half Paid MAY 31 1955
2nd Half Paid OCT 31 1955
1st Half Paid MAY 31 1955
2nd Half Paid OCT 31 1955
PAID IN FULL FEB 28 1955

Vertical text on the right edge:
Shingobee Island Br.
Chippewa Point of Kabekona Springs

Assessment Roll and Tax List of Real Property in the *Down* of *Shingobee*

Indicate Type of Property: R-Residential, C-Commercial, I-Industrial, U-Utility, F-Farm

Cass County, Minnesota, for Taxes for the Year 1954.

IN WHOSE NAME ASSESSED	TO WHOM TRANSFERRED	SUBDIVISION	Number of Acres of Land		No. School District	Indicate Homestead or No	Indicate Agricultural or No	Indicate Type of Property	TRUE AND FULL VALUATIONS					ASSESSED VALUATIONS					FINAL EQUALIZED VALUE	SOLD FOR TAXES	VALUATIONS BY SCHOOL DISTRICTS AS EQUALIZED BY DEPARTMENT OF TAXATION						Tax including State Homestead	State Tax on Non-Homestead	SPECIAL TAXES	TOTAL TAXES	PAID	WHEN PAID	Number of Receipt	March Settlement 1955	June Settlement 1955	Penalty	November Settlement 1955	Penalty	Collections to First Monday in January 1956	Penalty	Delinquent on First Monday in January 1956	Total Delinquent Tax and Penalty	REMARKS														
			Dollars	Dollars					Dollars	Dollars	Dollars	Dollars	Dollars	Dollars	Dollars	Dollars	Dollars	Dollars			Dollars	Dollars	Dollars	Dollars	Dollars	Dollars																		Dollars	Dollars	Dollars	Dollars	Dollars	Dollars	Dollars	Dollars	Dollars	Dollars	Dollars	Dollars	Dollars	Dollars
		NE 1/4 of NE 1/4	9	142 31	5																																																				
		NW 1/4 of NE 1/4																																																							
		SW 1/4 of NE 1/4																																																							
		SE 1/4 of NE 1/4																																																							
<i>Averre Olsen</i>		Lot 1 less 6.33 ac Hwy <i>to 10 42</i>																																																							
<i>Carl W. & Louise Miller</i>		NE 1/4 of NW 1/4 <i>lot 3 {Gleason near}</i>																																																							
		NW 1/4 of NW 1/4																																																							
<i>Carl W. & Louise Miller</i>		6.5 ac of lots 3 & 4 S 1/2 of SW 1/4 NW 1/4 <i>roadway</i>		650																																																					
		SE 1/4 of NW 1/4																																																							
<i>Jack W. Gleason</i>		Part of lot 3 & 4		300																																																					
<i>Glen E. & Myrabelle Edison</i>		NE 1/4 of SW 1/4																																																							
<i>Alpha W. & Edith P. Brunten</i>		NW 1/4 of SW 1/4		40																																																					
"		SW 1/4 of SW 1/4 <i>less Ry</i>		35																																																					
<i>Carl W. & Louise Miller</i>		SE 1/4 of SW 1/4 <i>less Ry</i>		11 50																																																					
		NE 1/4 of SE 1/4 <i>lot 2</i>		40																																																					
<i>Glen E. & Myrabelle Edison</i>		NE 1/4 of SE 1/4 <i>lot 2</i>		40																																																					
		NW 1/4 of SE 1/4																																																							
		SW 1/4 of SE 1/4																																																							
<i>J. J. & Mrs. F. Brunten</i>		SE 1/4 of SE 1/4																																																							
<i>Lawrence & Charlotte Brunten</i>		Part of lot 3 & 4 S 1/2 of SW 1/4 <i>less Ry of roadway</i>		20																																																					
<i>A. C. Chase</i>		All lot 1 W. of Ry		160 42																																																					

Shingobee Island Br. Chippewa Point Co. Kabeena Springs

Assessment Roll and Tax List of Real Property in the Down of Shingobee,
*Indicate Type of Property: R-Residential, C-Commercial, I-Industrial, U-Utility, F-Farm

Cass County, Minnesota, for Taxes for the Year 1954.

IN WHOSE NAME ASSESSED	TO WHOM TRANSFERRED	DESCRIPTION OF PROPERTY				TRUE AND FULL VALUATIONS										SOLD FOR TAXES	VALUATIONS BY SCHOOL DISTRICTS AS EQUALIZED BY DEPARTMENT OF TAXATION						PAID	WHEN PAID	Number of Receipt	March Settlement 1955	June Settlement 1955	Penalty	November Settlement 1955	Penalty	Collections to First Monday in January 1956	Penalty	Delinquent on First Monday in January 1956	Total Delinquent Tax and Penalty	REMARKS																					
		SUBDIVISION	Sec. or Lot	Town or Block	Rng	Number of Acres of Land	LAND Exclusive of Structures and Improvements	BUILDINGS and Other Structures	MACHINERY Permanently Attached to Real Estate	TOTAL True and Full Value	RURAL		ALL OTHER		MACHINERY Permanently Attached to Real Estate		TOTAL ASSESSED VALUE	Total Assessed Value as Equalized by the Board of Review	FINAL EQUALIZED VALUE	District No.	District Rate	District No.														District Rate	District No.	District Rate	District No.	District Rate	Tax including State Homestead	State Tax on Non-Homestead	SPECIAL TAXES	TOTAL TAXES	Month	Day	Year	March Settlement	June Settlement	Penalty	November Settlement	Penalty	Collections to First Monday in January 1956	Penalty	Delinquent on First Monday in January 1956	Total Delinquent Tax and Penalty
											Acres	100ths	No. School District	Indicate Homestead Yes or No																																										
<i>Etch L. Peterson</i>		SE 1/4 of NE 1/4 Lot 1	10	142	31	19	5-720	yes	L	284	280	564	188		188		1	188							3372	98		3470	1	PAID IN FULL	MAY 31	1955	7048		3470																					
		NW 1/4 of NE 1/4															2																																							
		SW 1/4 of NE 1/4															3																																							
		SE 1/4 of NE 1/4															4																																							
		NE 1/4 of NW 1/4															6																																							
		NW 1/4 of NW 1/4															7																																							
		SW 1/4 of NW 1/4															8																																							
		SE 1/4 of NW 1/4															9																																							
		NE 1/4 of SW 1/4															11																																							
		NW 1/4 of SW 1/4															12																																							
		SW 1/4 of SW 1/4															13																																							
		SE 1/4 of SW 1/4															14																																							
		NE 1/4 of SE 1/4															16																																							
		NW 1/4 of SE 1/4															17																																							
		SW 1/4 of SE 1/4															18																																							
		SE 1/4 of SE 1/4															19																																							
																	20																																							

Shingobee Island Br. Chippewa Point of Kabeona Springs

Assessment Roll and Tax List of Real Property in the Douglas of Shingobee County, Minnesota
 *Indicate Type of Property: R-Residential, C-Commercial, I-Industrial, U-Utility, F-Farm

Cass County, Minnesota, for Taxes for the Year 1954.

IN WHOSE NAME ASSESSED	TO WHOM TRANSFERRED	DESCRIPTION OF PROPERTY				TRUE AND FULL VALUATIONS												FINAL EQUALIZED VALUE	SOLD FOR TAXES	VALUATIONS BY SCHOOL DISTRICTS AS EQUALIZED BY DEPARTMENT OF TAXATION						Taxes including State Homestead	State Tax on Non-Homestead	SPECIAL TAXES	TOTAL TAXES	PAID	WHEN PAID	Number of Receipt	March Settlement 1955	June Settlement 1955	Penalty	November Settlement 1955	Penalty	Collections to First Monday in January 1956	Penalty	Delinquent on First Monday in January 1956	Total Delinquent Tax and Penalty	REMARKS																	
		SUBDIVISION	Sec. of Lot	Town or Block	Rng	Number of Acres of Land	LAND Exclusive of Structures and Improvements	BUILDINGS and Other Structures	MACHINERY Permanently Attached to Real Estate	TOTAL True and Full Value	RURAL		ALL OTHER		MACHINERY Permanently Attached to Real Estate	TOTAL ASSESSED VALUE	Total Assessed Value as Equalized by the Board of Review			District No.	District No.	District No.	District No.	District No.	District No.																																		
											Homestead Up to \$4,000	Over \$4,000 and Non-Homestead 20%	Homestead Up to \$4,000	Over \$4,000 and Non-Homestead 25%																													33 1/3%	40%	Rate	Rate	Rate	Rate	Rate	Rate									
U. S. of America (in trust for Maud Chippewa Tribe)		E 1/2 of NE 1/4	13	142	31																																																						
		NW 1/4 of NE 1/4																																																									
		SW 1/4 of NE 1/4																																																									
		SE 1/4 of NE 1/4																																																									
		NE 1/4 of NW 1/4																																																									
		NW 1/4 of NW 1/4																																																									
		SW 1/4 of NW 1/4																																																									
		SE 1/4 of NW 1/4																																																									
		NE 1/4 of SW 1/4																																																									
		NW 1/4 of SW 1/4																																																									
		SW 1/4 of SW 1/4																																																									
		SE 1/4 of SW 1/4																																																									
		NE 1/4 of SE 1/4																																																									
		NW 1/4 of SE 1/4																																																									
		SW 1/4 of SE 1/4																																																									
		SE 1/4 of SE 1/4																																																									

143-3

Shingobee Island Bd. Chippewa Point Chippewa Springs

Assessment Roll and Tax List of Real Property in the Town of Shingobe of Shingobe

*Indicate Type of Property: R-Residential, C-Commercial, I-Industrial, U-Utility, F-Farm

Table with columns for In Whose Name Assessed, To Whom Transferred, Description of Property, True and Full Valuations (Land, Buildings, Machinery, Rural, All Other, Machinery), Assessed Valuations (Rural, All Other, Machinery, Total Assessed Value), and Final Equalized Value. Includes handwritten entries for Maryl. Ray, Edith M. Nipham, G.C. + Genevieve Pascher, Edith M. Nipham, John H. + Sophia Hanson, and John H. + Sophia Hanson.

Cass County, Minnesota, for Taxes for the Year 1954.

Table with columns for Sold For Taxes, Valuations by School Districts, Tax including State Homestead, State Tax on Non-Homestead, Special Taxes, Total Taxes, Paid, When Paid, Number of Receipt, March Settlement 1955, June Settlement 1955, November Settlement 1955, Collections to First Monday in January 1956, Delinquent on First Monday in January 1956, Total Delinquent Tax and Penalty, and Remarks. Includes handwritten notes for 'SOLD FOR TAXES' and tax payment dates like 'PAID IN FULL AUG 2 1955'.

Assessment Roll and Tax List of Real Property in the Down of Shogobee

*Indicate Type of Property: R-Residential, C-Commercial, I-Industrial, U-Utility, F-Farm

IN WHOSE NAME ASSESSED	TO WHOM TRANSFERRED	DESCRIPTION OF PROPERTY				TRUE AND FULL VALUATIONS				ASSESSED VALUATIONS					FINAL EQUALIZED VALUE			
		SUBDIVISION	Sec. or Lot	Town or Block	Rng	Number of Acres of Land	LAND Exclusive of Structures and Improvements	BUILDINGS and Other Structures	MACHINERY Permanently Attached to Real Estate	TOTAL True and Full Value	RURAL		ALL OTHER			MACHINERY Permanently Attached to Real Estate	TOTAL ASSESSED VALUE	Total Assessed Value as Equalized by the Board of Review
											Acres	100ths	Homestead Up to \$4,000 20%	Over \$4,000 and Non-Homestead 33 1/3%				
<i>Shogobee Lumber Co</i>	<i>Shogobee Lumber Co</i>	NE 1/4 of NE 1/4	17	142	31	40			1235	1220				1235	327	327		
<i>Shogobee Lumber Co</i>	<i>Shogobee Lumber Co</i>	NW 1/4 of NE 1/4				40			200	160				420	84	84		
U. S. of America		SW 1/4 of NE 1/4																
U. S. of America		SE 1/4 of NE 1/4																
U. S. of America		SW 1/4 of NW 1/4				20			230					230	46	46		
U. S. of America		NW 1/4 of NW 1/4																
U. S. of America		SW 1/4 of NW 1/4																
U. S. of America		SE 1/4 of NW 1/4																
U. S. of America		NE 1/4 of SW 1/4																
U. S. of America		NW 1/4 of SW 1/4																
U. S. of America		SW 1/4 of SW 1/4																
U. S. of America		SE 1/4 of SW 1/4																
State of Minnesota		NE 1/4 of SE 1/4																
U. S. of America		NW 1/4 of SE 1/4																
U. S. of America		SW 1/4 of SE 1/4																
U. S. of America		SE 1/4 of SE 1/4																
						100			805	1480				2085	457	457		

Cass County, Minnesota, for Taxes for the Year 1954.

SOLD FOR TAXES	VALUATIONS BY SCHOOL DISTRICTS AS EQUALIZED BY DEPARTMENT OF TAXATION					Tax including State Homestead	State Tax on Non-Homestead	SPECIAL TAXES	TOTAL TAXES	PAID	WHEN PAID	Number of Receipt	March Settlement 1955	June Settlement 1955	Penalty	November Settlement 1955	Penalty	Collections to First Monday in January 1956	Penalty	Delinquent on First Monday in January 1956	Total Delinquent Tax and Penalty	REMARKS	
	District No.	District No.	District No.	District No.	District No.																		
	Rate	Rate	Rate	Rate	Rate																		
1	H 327					5866			5866	1	PAID IN FULL MAY 10 1955	5887		5866									
2	H 84					1508			1508	2	PAID IN FULL MAY 24 1955	5875		1508									Refund at ch. #6417 15 ⁰⁸ on ch. 5587 6-21-55 15.09 overpaid
6	H 46					826			826	6	2nd Half Paid OCT 17 1955 1st Half Paid MAY 31 1955	4078 5874		413		413							
														7295		413							

Shogobee Island Br. Grippewa Point Co. Keokuk Springs

Assessment Roll and Tax List of Real Property in the Douglas of Shingobee County, Minnesota

*Indicate Type of Property: R-Residential, C-Commercial, I-Industrial, U-Utility, F-Farm

Form 502 (54) - 1953 - 1954 - 1955

IN WHOSE NAME ASSESSED	TO WHOM TRANSFERRED	DESCRIPTION OF PROPERTY				No. School District	Indicate Homestead Yes or No	Indicate Agricultural Yes or No	* Indicate Type of Property	TRUE AND FULL VALUATIONS			ASSESSED VALUATIONS						FINAL EQUALIZED VALUE	SOLD FOR TAXES	District	District	District	District	District	District	Tax including State Homestead	State Tax on Non-Homestead	SPECIAL TAXES	TOTAL TAXES	PAID	WHEN PAID	Number of Receipt	March Settlement 1955	June Settlement 1955	Penalty	November Settlement 1955	Penalty	Collections to First Monday in January 1956	Penalty	Delinquent on First Monday in January 1956	Total Delinquent Tax and Penalty	REMARKS												
		SUBDIVISION	Sec. or Lot	Town or Block	Rng					Number of Acres of Land	TOTAL True and Full Value	RURAL		ALL OTHER		MACHINERY Permanently Attached to Real Estate	TOTAL ASSESSED VALUE	Total Assessed Value as Equalized by the Board of Review																										District	District	District	District	District	District						
												Homestead Up to \$4,000	Over \$4,000 and Non-Homestead	Homestead Up to \$4,000	Over \$4,000 and Non-Homestead																																			Rate	Rate	Rate	Rate		
U. S. of America		NE 1/4 of NE 1/4			18 1/2 31																																																		
U. S. of America		NW 1/4 of NE 1/4																																																					
U. S. of America		SW 1/4 of NE 1/4																																																					
U. S. of America		SE 1/4 of NE 1/4																																																					
U. S. of America		NE 1/4 of NW 1/4																																																					
U. S. of America		NW 1/4 of NW 1/4																																																					
U. S. of America		SW 1/4 of NW 1/4																																																					
U. S. of America		SE 1/4 of NW 1/4																																																					
U. S. of America		NE 1/4 of SW 1/4																																																					
U. S. of America		NW 1/4 of SW 1/4																																																					
U. S. of America		SW 1/4 of SW 1/4																																																					
U. S. of America		SE 1/4 of SW 1/4																																																					
U. S. of America		NE 1/4 of SE 1/4																																																					
U. S. of America		NW 1/4 of SE 1/4																																																					
U. S. of America		SW 1/4 of SE 1/4																																																					
U. S. of America		SE 1/4 of SE 1/4																																																					

Shingobee Island Br. Chippewa Point 09 Kabecon Springs

Assessment Roll and Tax List of Real Property in the Town of Shingle,

Cass County, Minnesota, for Taxes for the Year 1954.

*Indicate Type of Property: R-Residential, C-Commercial, I-Industrial, U-Utility, F-Farm

Main table with columns for 'DESCRIPTION OF PROPERTY', 'TRUE AND FULL VALUATIONS', 'ASSESSED VALUATIONS', 'VALUATIONS BY SCHOOL DISTRICTS', 'TAXES', 'PAID', 'WHEN PAID', and 'REMARKS'. Includes handwritten entries for August L. & Peter E. Palusky, Horace D. Reigle, D.C. Stakefield, Leslie & Irene Gardner, and The Lipson Lumber Co.

Shingle Island
Shingobee Island
Chippewa Point
Kawakona Springs

Assessment Roll and Tax List of Real Property in the Town of Shingabe, Cass County, Minnesota, for Taxes for the Year 1954.

Cass County, Minnesota, for Taxes for the Year 1954.

Table with columns: IN WHOSE NAME ASSESSED, TO WHOM TRANSFERRED, DESCRIPTION OF PROPERTY, TRUE AND FULL VALUATIONS, ASSESSED VALUATIONS, VALUATIONS BY SCHOOL DISTRICTS AS EQUALIZED BY DEPARTMENT OF TAXATION, TAXES, PAID, WHEN PAID, Number of Receipt, March Settlement 1955, June Settlement 1955, November Settlement 1955, Collections to First Monday in January 1956, Delinquent on First Monday in January 1956, Total Delinquent Tax and Penalty, REMARKS.

Handwritten notes: 34 acres... Walker Village... 19/30/55... See 22-... (partially illegible)

Vertical text on the right edge: City of... Shingabe Island... Chippewa Point... Kabekona Springs

Assessment Roll and Tax List of Real Property in the Town of Kingsley of Shingee,
*Indicate Type of Property: R-Residential, C-Commercial, I-Industrial, U-Utility, F-Farm

Table with columns for IN WHOSE NAME ASSESSED, TO WHOM TRANSFERRED, DESCRIPTION OF PROPERTY (SUBDIVISION, Acres, 100ths), TRUE AND FULL VALUATIONS (LAND, BUILDINGS, MACHINERY, TOTAL), ASSESSED VALUATIONS (RURAL, ALL OTHER, MACHINERY, TOTAL), VALUATIONS BY SCHOOL DISTRICTS AS EQUALIZED BY DEPARTMENT OF TAXATION (District No., Rate, Mills), Tax including State Homestead, State Tax on Non-Homestead, SPECIAL TAXES, TOTAL TAXES, PAID, WHEN PAID (Month, Day, Year), Number of Receipt, March Settlement, June Settlement, November Settlement, Penalty, Collections to First Monday in January 1956, Delinquent on First Monday in January 1956, Total Delinquent Tax and Penalty, REMARKS.

Ech Stolch
Lot 2 less platted & less 400' x 90' & less 10' side to Hargard & less 10' side to Byrd + less 180' NE 1/4 of NE 1/4
23 14 31 25 20 5 No No T
Richard J. Fragon M. Kartew
400' x 70' of Lot 2
SW 1/4 of NE 1/4
83 No R
Theodore Hargard
10 rods & borders of Lot 2 less platted
100 No T
John D. Olson
10 x 16 rods of Lot 2 less platted
NW 1/4 of NW 1/4
100 No R
John M. & Mary Meyer Lang
18 ac of Lot 2
180 No C
NE 1/4 of SW 1/4
NW 1/4 of SW 1/4
SW 1/4 of SW 1/4
SE 1/4 of SW 1/4
NE 1/4 of SE 1/4
NW 1/4 of SE 1/4
SW 1/4 of SE 1/4
SE 1/4 of SE 1/4

John M. & Mary Meyer Lang
Shingee Island
Chippewa Point
Kakekora Springs

Assessment Roll and Tax List of Real Property in the Town of Down of Shingobee County, Minnesota
*Indicate Type of Property: R-Residential, C-Commercial, I-Industrial, U-Utility, F-Farm

Table with columns: IN WHOSE NAME ASSESSED, TO WHOM TRANSFERRED, DESCRIPTION OF PROPERTY, TRUE AND FULL VALUATIONS, ASSESSED VALUATIONS, FINAL EQUALIZED VALUE. Includes handwritten entries for various lots and owners like Julius & Minnie Johnson, Russell & Ruby Long, etc.

(continued on next page)

Cass County, Minnesota, for Taxes for the Year 1954.

Table with columns: VALUATIONS BY SCHOOL DISTRICTS AS EQUALIZED BY DEPARTMENT OF TAXATION, TAXES, PAID, WHEN PAID, Number of Receipt, March Settlement 1955, June Settlement 1955, November Settlement 1955, Collections to First Monday in January 1956, Delinquent on First Monday in January 1956, Total Delinquent Tax and Penalty, REMARKS. Includes handwritten entries for various lots and owners.

Shingobee Island, Chippewa Point, Kabekona Springs

Assessment Roll and Tax List of Real Property in the town of Shogobee, *Indicate Type of Property: R-Residential, C-Commercial, I-Industrial, U-Utility, F-Farm

Cass County, Minnesota, for Taxes for the Year 1954.

Table with columns: IN WHOSE NAME ASSESSED, TO WHOM TRANSFERRED, DESCRIPTION OF PROPERTY, TRUE AND FULL VALUATIONS, ASSESSED VALUATIONS, VALUATIONS BY SCHOOL DISTRICTS AS EQUALIZED BY DEPARTMENT OF TAXATION, SOLD FOR TAXES, PAID, WHEN PAID, Number of Receipt, March Settlement 1955, June Settlement 1955, November Settlement 1955, Collections to First Monday in January 1956, Delinquent on First Monday in January 1956, Total Delinquent Tax and Penalty, REMARKS.

Village of Walker
Dorothy Duke
Julia S. Gamble
J. L. Jewell
Julia S. Gamble
H. B. Duke
Miss Power & Light
Village of Walker
Park E. & Nina Steadland
Dorothy Duke
Park E. & Nina Steadland
Michael & Lillian C. Steadland

(continued on next page)

Shogobee Island
Chippewa Point
Kabeokne Springs

Assessment Roll and Tax List of Real Property in the Town of Spring Lake, Cass County, Minnesota, for Taxes for the Year 1954.

Table with columns: IN WHOSE NAME ASSESSED, TO WHOM TRANSFERRED, DESCRIPTION OF PROPERTY, TRUE AND FULL VALUATIONS, ASSESSED VALUATIONS, VALUATIONS BY SCHOOL DISTRICTS AS EQUALIZED BY DEPARTMENT OF TAXATION, TAXES, PAID, WHEN PAID, Number of Receipt, March Settlement 1955, June Settlement 1955, Penalty, November Settlement 1955, Penalty, Collections to First Monday in January 1956, Penalty, Delinquent on First Monday in January 1956, Total Delinquent Tax and Penalty, REMARKS.

(continued on next page)

Shitogobee Island, Br. Winnipeg Point, Kabeokona Springs

Assessment Roll and Tax List of Real Property in the Town of Down of Shingobee County, Minnesota

*Indicate Type of Property: R-Residential, C-Commercial, I-Industrial, U-Utility, F-Farm

Form SCD (54) - 1954

Table with columns: IN WHOSE NAME ASSESSED, TO WHOM TRANSFERRED, DESCRIPTION OF PROPERTY, TRUE AND FULL VALUATIONS, ASSESSED VALUATIONS, and FINAL EQUALIZED VALUE.

Cass County, Minnesota, for Taxes for the Year 1954.

Table with columns: SOLD FOR TAXES, VALUATIONS BY SCHOOL DISTRICTS AS EQUALIZED BY DEPARTMENT OF TAXATION, SPECIAL TAXES, TOTAL TAXES, PAID, WHEN PAID, Number of Receipt, March Settlement, June Settlement, November Settlement, Collections to First Monday in January, Delinquent on First Monday in January, Total Delinquent Tax and Penalty, and REMARKS.

Vertical text on the right edge: Otterby, Belts, Shingobee Island, Kabeona Springs.

Assessment Roll and Tax List of Real Property in the Dwain of Shingobee,
 *Indicate Type of Property: R-Residential, C-Commercial, I-Industrial, U-Utility, F-Farm

Form 50 (54) - 1-1-54

IN WHOSE NAME ASSESSED	TO WHOM TRANSFERRED	DESCRIPTION OF PROPERTY		TRUE AND FULL VALUATIONS											FINAL EQUALIZED VALUE										
				ASSESSED VALUATIONS					Machinery Permanently Attached to Real Estate	TOTAL ASSESSED VALUE	Total Assessed Value as Equalized by the Board of Review														
				RURAL		ALL OTHER																			
SUBDIVISION <i>Sunrise Beach</i> <i>Lot 1 Sec. 22-142-31</i>		Sec. or Lot	Town or Block	Ring	Number of Acres of Land	LAND Exclusive of Structures and Improvements	BUILDINGS and Other Structures	MACHINERY Permanently Attached to Real Estate	TOTAL True and Full Value	Homestead Up to \$4,000 20%	Over \$4,000 and Non-Homestead 33 1/3%	Homestead Up to \$4,000 25%	Over \$4,000 and Non-Homestead 40%	Machinery Permanently Attached to Real Estate 33 1/3%	Dollars	Dollars	Dollars	Dollars	Dollars	Dollars	Dollars	Dollars	Dollars	Dollars	Dollars
<i>Werner M. Backman</i>																									
		1	1																						
		2																							
		3																							
		4																							
		5																							
		6																							
		7																							
		8																							
		9																							
		10																							
		11																							
		12																							
		13																							
		14																							
		15																							
		16																							
		17																							
		18																							
		19																							
		20																							
						570	750		1320		440														

Cass County, Minnesota, for Taxes for the Year 1954.

SOLD FOR TAXES	VALUATIONS BY SCHOOL DISTRICTS AS EQUALIZED BY DEPARTMENT OF TAXATION						Tax including State Homestead	State Tax on Non-Homestead	SPECIAL TAXES	TOTAL TAXES	PAID	WHEN PAID	Number of Receipt	March Settlement 1955	June Settlement 1955	Penalty	November Settlement 1955	Penalty	Collections to First Monday in January 1956	Penalty	Delinquent on First Monday in January 1956	Total Delinquent Tax and Penalty	REMARKS	
	District No.	District No.	District No.	District No.	District No.	District No.																		
	Rate	Rate	Rate	Rate	Rate	Rate																		
	1.1 Mills	1.1 Mills	1.1 Mills	1.1 Mills	1.1 Mills	1.1 Mills																		
	1.1 Mills	1.1 Mills	1.1 Mills	1.1 Mills	1.1 Mills	1.1 Mills																		
1	1.1 Mills	1.1 Mills	1.1 Mills	1.1 Mills	1.1 Mills	1.1 Mills																		
2	1.1 Mills	1.1 Mills	1.1 Mills	1.1 Mills	1.1 Mills	1.1 Mills																		
3	1.1 Mills	1.1 Mills	1.1 Mills	1.1 Mills	1.1 Mills	1.1 Mills																		
4	1.1 Mills	1.1 Mills	1.1 Mills	1.1 Mills	1.1 Mills	1.1 Mills																		
5	1.1 Mills	1.1 Mills	1.1 Mills	1.1 Mills	1.1 Mills	1.1 Mills																		
6	1.1 Mills	1.1 Mills	1.1 Mills	1.1 Mills	1.1 Mills	1.1 Mills																		
7	1.1 Mills	1.1 Mills	1.1 Mills	1.1 Mills	1.1 Mills	1.1 Mills																		
8	1.1 Mills	1.1 Mills	1.1 Mills	1.1 Mills	1.1 Mills	1.1 Mills																		
9	1.1 Mills	1.1 Mills	1.1 Mills	1.1 Mills	1.1 Mills	1.1 Mills																		
10	1.1 Mills	1.1 Mills	1.1 Mills	1.1 Mills	1.1 Mills	1.1 Mills																		
11	1.1 Mills	1.1 Mills	1.1 Mills	1.1 Mills	1.1 Mills	1.1 Mills																		
12	1.1 Mills	1.1 Mills	1.1 Mills	1.1 Mills	1.1 Mills	1.1 Mills																		
13	1.1 Mills	1.1 Mills	1.1 Mills	1.1 Mills	1.1 Mills	1.1 Mills																		
14	1.1 Mills	1.1 Mills	1.1 Mills	1.1 Mills	1.1 Mills	1.1 Mills																		
15	1.1 Mills	1.1 Mills	1.1 Mills	1.1 Mills	1.1 Mills	1.1 Mills																		
16	1.1 Mills	1.1 Mills	1.1 Mills	1.1 Mills	1.1 Mills	1.1 Mills																		
17	1.1 Mills	1.1 Mills	1.1 Mills	1.1 Mills	1.1 Mills	1.1 Mills																		
18	1.1 Mills	1.1 Mills	1.1 Mills	1.1 Mills	1.1 Mills	1.1 Mills																		
19	1.1 Mills	1.1 Mills	1.1 Mills	1.1 Mills	1.1 Mills	1.1 Mills																		
20	1.1 Mills	1.1 Mills	1.1 Mills	1.1 Mills	1.1 Mills	1.1 Mills																		
										816	244	824												
										7184														
										8000														

Sunrise Beach

Cass County, Minnesota

Shingobee Island

Kobecon Springs

Kobecon Springs

Assessment Roll and Tax List of Real Property in the Down of Shingobee, *Indicate Type of Property: R-Residential, C-Commercial, I-Industrial, U-Utility, F-Farm

Cass County, Minnesota, for Taxes for the Year 1954.

Table with columns: IN WHOSE NAME ASSESSED, TO WHOM TRANSFERRED, DESCRIPTION OF PROPERTY, TRUE AND FULL VALUATIONS, ASSESSED VALUATIONS, VALUATIONS BY SCHOOL DISTRICTS AS EQUALIZED BY DEPARTMENT OF TAXATION, TAXES, PAID, WHEN PAID, Number of Receipt, March Settlement 1955, June Settlement 1955, Penalty, November Settlement 1955, Penalty, Collections to First Monday in January 1956, Penalty, Delinquent on First Monday in January 1956, Total Delinquent Tax and Penalty, REMARKS. Includes handwritten entries for Archie & Jean M. Knight, John King, Otto F. Rengle, Howard Gonn, Russell C. Green, Frank & Anna King, Arnold & Marie Ann Pierson, Fred & Jane Huggeth.

Shingobee Island Sunrise Beach

Payson Gable Gunee Beach Bre. Chippewa Point Kabeona Springs

Other

1.52 Abated

1.52 Abated

Assessment Roll and Tax List of Real Property in the *Town of Shingobee*

*Indicate Type of Property: R-Residential, C-Commercial, I-Industrial, U-Utility, F-Farm

Cass County, Minnesota, for Taxes for the Year 1954.

IN WHOSE NAME ASSESSED	TO WHOM TRANSFERRED	DESCRIPTION OF PROPERTY				No. School District	Indicate Homestead Yes or No	Indicate Agricultural Yes or No	Indicate Type of Property	TRUE AND FULL VALUATIONS				ASSESSED VALUATIONS					FINAL EQUALIZED VALUE	SOLD FOR TAXES	VALUATIONS BY SCHOOL DISTRICTS AS EQUALIZED BY DEPARTMENT OF TAXATION						TAX INCLUDING STATE HOMESTEAD	STATE TAX ON NON-HOMESTEAD	SPECIAL TAXES	TOTAL TAXES	PAID	WHEN PAID	Number of Receipt	March Settlement 1955	June Settlement 1955	Penalty	November Settlement 1955	Penalty	Collections to First Monday in January 1956	Penalty	Delinquent on First Monday in January 1956	Total Delinquent Tax and Penalty	REMARKS			
		Subdivision	Sec. of Lot	Town or Block	Rng					Number of Acres of Land	LAND Exclusive of Structures and Improvements	BUILDINGS and Other Structures	MACHINERY Permanently Attached to Real Estate	TOTAL True and Full Value	RURAL		ALL OTHER				MACHINERY Permanently Attached to Real Estate	TOTAL ASSESSED VALUE	Total Assessed Value as Equalized by the Board of Review	District No.	District No.	District No.																		District No.	District No.	District No.
															Acres	100ths	Dollars	Dollars						Dollars	Dollars	Dollars																		Dollars	Dollars	Dollars
<i>Fred & Jane Huggett</i>		<i>Shingobee Island</i>	21	1																																										
" "			22																																											
State of Minnesota																																														
<i>G.H. Marie A. Runyan</i>		<i>Part of</i>	1	2																																										
" "		<i>Part of</i>	1																																											
State of Minnesota			2																																											
State of Minnesota			3																																											
State of Minnesota			4																																											
State of Minnesota			5																																											
State of Minnesota																																														
State of Minnesota			1	3																																										
State of Minnesota			2																																											
State of Minnesota			3																																											
State of Minnesota			4																																											
State of Minnesota			5																																											

142-81

Sunrise Beach

Shingobee Island

Oldway

Ball's 1st Adm to Gilie Gunee Beach

Person of the Gunee Beach Bro

Chippewa Point

Kabecon Springs

Assessment Roll and Tax List of Real Property in the District of Shingobee, *Indicate Type of Property: R-Residential, C-Commercial, I-Industrial, U-Utility, F-Farm

Cass County, Minnesota, for Taxes for the Year 1954.

Form 50 (54) - MILLAGE DIVISION, MINNESOTA

Table with columns for IN WHOSE NAME ASSESSED, TO WHOM TRANSFERRED, DESCRIPTION OF PROPERTY, TRUE AND FULL VALUATIONS, ASSESSED VALUATIONS, VALUATIONS BY SCHOOL DISTRICTS AS EQUALIZED BY DEPARTMENT OF TAXATION, SOLD FOR TAXES, PAID, WHEN PAID, Number of Receipt, March Settlement 1955, June Settlement 1955, Penalty, November Settlement 1955, Collections to First Monday in January 1956, Delinquent on First Monday in January 1956, Total Delinquent Tax and Penalty, REMARKS.

142-31

Sunrise Beach

Shingobee Island

Chippewa Point

Oldway

Ball's 1st Addition to Otchie Gumeo Beach

Persons

Otchie Gumeo Beach

Breezy Point

Greene

Kadokona Springs

Assessment Roll and Tax List of Real Property in the Town of Shingobee,

Cass County, Minnesota, for Taxes for the Year 1954.

*Indicate Type of Property: R-Residential, C-Commercial, I-Industrial, U-Utility, F-Farm

IN WHOSE NAME ASSESSED	TO WHOM TRANSFERRED	DESCRIPTION OF PROPERTY						TRUE AND FULL VALUATIONS										SOLD FOR TAXES	VALUATIONS BY SCHOOL DISTRICTS AS EQUALIZED BY DEPARTMENT OF TAXATION										PAID	WHEN PAID	Number of Receipt	March Settlement 1955	June Settlement 1955	Penalty	November Settlement 1955	Penalty	Collections to First Monday in January 1956	Penalty	Delinquent on First Monday in January 1956	Total Delinquent Tax and Penalty	REMARKS																	
		SUBDIVISION	Sec. or Lot	Town or Block	Rng.	Number of Acres of Land	No. School District	Indicate Homestead Yes or No	Indicate Agricultural Yes or No	Indicate Type of Property	ASSESSED VALUATIONS					Total Assessed Value as Equalized by the Board of Review	FINAL EQUALIZED VALUE		District						TAX Including State Homestead	State Tax on Non-Homestead	SPECIAL TAXES	TOTAL TAXES														PAID	WHEN PAID	Number of Receipt	March Settlement 1955	June Settlement 1955	Penalty	November Settlement 1955	Penalty	Collections to First Monday in January 1956	Penalty	Delinquent on First Monday in January 1956	Total Delinquent Tax and Penalty					
											LAND Exclusive of Structures and Improvements	BUILDINGS and Other Structures	MACHINERY Permanently Attached to Real Estate	TOTAL True and Full Value	RURAL				ALL OTHER		MACHINERY Permanently Attached to Real Estate	TOTAL ASSESSED VALUE	District No.	District No.																														District No.	District No.	District No.	District No.	
															Homestead Up to \$1,000				Over \$4,000 and Non-Homestead	Homestead Up to \$1,000																																						Over \$4,000 and Non-Homestead
Ella Broderson		Shabbona Springs	13	4		5		L		51		51	17		17		17		304	08		312		1	PAID IN FULL MAY 31 1955			312																														
" "			14			"		L		51		51	17		17		17		304	08		312		2	PAID IN FULL MAY 31 1955			312																														

142-31
Sunrise Beach
Shingobee Island
Chippewa Point
Shabbona Springs

102 102 34 34

34 608 16 624

624

Return to the Assessor, 1st Flr. to City Office, Shabbona Beach, Shingobee, Minn.

Assessment Roll and Tax List of Real Property in the Town of Shingabe,
 *Indicate Type of Property: R-Residential, C-Commercial, I-Industrial, U-Utility, F-Farm

Cass County, Minnesota, for Taxes for the Year 1954.

Abakona South
 Crescent Beach
 1st Add'n.
 OF Breezy Point
 Itchie Gumbee Beach
 Ball's 1st Add'n to
 Itchie Gumbee Beach
 Wa-Ba-Ne-Be-By

IN WHOSE NAME ASSESSED	TO WHOM TRANSFERRED	DESCRIPTION OF PROPERTY				No. School District	Indicate Homestead Yes or No	Indicate Agricultural Yes or No	Indicate Type of Property	TRUE AND FULL VALUATIONS			ASSESSED VALUATIONS						FINAL EQUALIZED VALUE Dollars			
		SUBDIVISION	Sec. or Lot	Town or Block	Rng					Number of Acres of Land Acres 100ths	LAND Exclusive of Structures and Improvements	BUILDINGS and Other Structures	MACHINERY Permanently Attached to Real Estate	TOTAL True and Full Value	RURAL		ALL OTHER			MACHINERY Permanently Attached to Real Estate	TOTAL ASSESSED VALUE	Total Assessed Value as Equalized by the Board of Review
															Up to \$4,000 20%	Over \$4,000 and Non-Homestead 33 1/3%	Up to \$4,000 25%	Over \$4,000 and Non-Homestead 40%				
		Wa-Ba-Ne-Be-By																				
U. S. of America			21			5																
U. S. of America			22																			
U. S. of America			23																			
U. S. of America			24																			
U. S. of America			25																			
U. S. of America			26																			

SOLD FOR TAXES	VALUATIONS BY SCHOOL DISTRICTS AS EQUALIZED BY DEPARTMENT OF TAXATION						Tax including State Homestead	State Tax on Non-Homestead	SPECIAL TAXES	TOTAL TAXES	PAID	WHEN PAID	Number of Receipt	March Settlement 1955	June Settlement 1955	Penalty	November Settlement 1955	Penalty	Collections to First Monday in January 1956	Penalty	Delinquent on First Monday in January 1956	Total Delinquent Tax and Penalty	REMARKS				
	District No.	District No.	District No.	District No.	District No.	District No.																		District No.	District No.	District No.	District No.
	Rate	Rate	Rate	Rate	Rate	Rate																		Rate	Rate	Rate	Rate

Park Point
 Sunrise Heights
 Person
 Charlton Beach
 Smoke's Addition to Stand

Assessment Roll and Tax List of Real Property in the Town of Shingobe,
*Indicate Type of Property: R-Residential, C-Commercial, I-Industrial, U-Utility, F-Farm

IN WHOSE NAME ASSESSED	TO WHOM TRANSFERRED	DESCRIPTION OF PROPERTY				TRUE AND FULL VALUATIONS										FINAL EQUALIZED VALUE										
		SUBDIVISION	Sec. or Lot	Town or Block	Rag	Number of Acres of Land	No. School District	Indicate Homestead Yes or No	Indicate Agricultural Yes or No	Indicate Type of Property	LAND EXCLUSIVE OF STRUCTURES AND IMPROVEMENTS						BUILDINGS AND OTHER STRUCTURES					MACHINERY PERMANENTLY ATTACHED TO REAL ESTATE				
											Acres		100ths		Land		Buildings	Machinery	Total	Homestead	Over \$4,000	Homestead	Over \$4,000	Machinery	Total	Total Assessed
											Dollars	Dollars	Dollars	Dollars	Dollars		Dollars	Dollars	Dollars	Dollars	Dollars	Dollars	Dollars	Dollars	Dollars	
		17	5	YR	NO	R	60	1150	1210	242				242												
		18				T	60		60	12				12												
		19				T	60		60	12				12												
		20				T	60		60	12				12												

Cass County, Minnesota, for Taxes for the Year 1954.

SOLD FOR TAXES	VALUATIONS BY SCHOOL DISTRICTS AS EQUALIZED BY DEPARTMENT OF TAXATION						Tax Including State Homestead	State Tax on Non-Homestead	SPECIAL TAXES	TOTAL TAXES	PAID	WHEN PAID	Number of Receipt	March Settlement 1955	June Settlement 1955	Penalty	November Settlement 1955	Penalty	Collections to First Monday in January 1956	Penalty	Delinquent on First Monday in January 1956	Total Delinquent Tax and Penalty	REMARKS
	District No.	District No.	District No.	District No.	District No.	District No.																	
	Rate	Rate	Rate	Rate	Rate	Rate																	
	Mills	Mills	Mills	Mills	Mills	Mills																	
	Dollars	Dollars	Dollars	Dollars	Dollars	Dollars																	
1																							

10-Be-Na-Mo-Boy Sunrise Heights Breezy Point Litchie Gusee Beach Crescent Beach 1st Aid'n.

Park Point Person Charlton Beach Snoddy's Addition to Island

Assessment R

Real Property in the County of Shingobee
Indicate Type of Property: R-Residential, C-Commercial, I-Industrial, U-Utility, F-Farm

Cass County, Minnesota, for Taxes for the Year 1954.

Form 5C (54) MILLER-DAY COMPANY, MINNEAPOLIS

THUR AND FULL VALUATIONS

IN WHOSE NAME ASSESSED	TO WHOM TRANSFERRED	Acres	LAND	BUILDINGS	MACHINERY	TOTAL True and Full Value	ASSESSED VALUATIONS				Total Assessed Value as Equalized by the Board of Review	FINAL EQUALIZED VALUE
							Over \$4,000 and Non- Homestead 33 1/8%	Homestead Up to \$4,000 25%	Over \$4,000 and Non- Homestead 40%	MACHINERY Permanently Attached to Real Estate 33 1/8%		
Edward N. & Jean M. Cook	Shingobee Trwp	13	105'	105'		10				10		
Sam V. Carpenter	Huron Trwp	14	105'	105'		10				10		
Arthur S. & Evelyn S. Hunt	" "	15	105'	105'		10				10		
J.M. Brandt	" "	16	105'	105'		15				15		
Helen O. Reese	Ten Mile Lake	17				367				367		
Ollie Kridelbaugh	" "	18				20				20		
Marcia M. Eikenberry	Lots 13-14-15-16	19				20				20		
Helen O. Reese	Chariton Beach	20				20				20		
George E. & Mariel Mertens	" "	21				132				132		
Elmer S. Gookin	" "	22				20				20		
Marcia M. Eikenberry	" "	23				20				20		
Helen O. Reese	" "	24				20				20		
Basil E. Shofner	Outlet A	25				60				60		
" "	Outlet B	26				60				60		
Alpha H. Minar	" "	27				360				360		

VALUATIONS BY SCHOOL DISTRICTS AS EQUALIZED BY DEPARTMENT OF TAXATION

SOLD FOR TAXES	VALUATIONS BY SCHOOL DISTRICTS AS EQUALIZED BY DEPARTMENT OF TAXATION					Tax including State Homestead	State Tax on Non-Homestead	SPECIAL TAXES	TOTAL TAXES	PAID	WHEN PAID	Number of Receipt	March Settlement 1955	June Settlement 1955	November Settlement 1955	Collections to First Monday in January 1956	Delinquent on First Monday in January 1956	Total Delinquent Tax and Penalty	REMARKS
	District No.	Rate	District No.	Rate	District No.														
	10					180	06		186	PAID IN FULL	JAN 29 1955	206	186						
	10					180	06		186	PAID IN FULL	MAY 23 1955	6254		186					
	10					180	06		186	PAID IN FULL	MAY 31 1955	12228		186					
	15					270	08		278	PAID IN FULL	MAY 31 1955	12226		278					
	367					6584	197		6776	PAID IN FULL	MAY 31 1955			6776					
	20					358	10		368	PAID IN FULL	MAY 31 1955	12229		368					
	20					358	10		368	PAID IN FULL	JAN 24 1954	130	368						
	20					358	10		368										
	20					358	10		368	PAID IN FULL	MAY 31 1955	12229		368					
	20					358	10		368	PAID IN FULL	MAY 21 1955	5481		2368					
	20					358	10		368	PAID IN FULL	APR 13 1955	4899		368					
	20					358	10		368										
	20					358	10		368	PAID IN FULL	MAY 31 1955	12229		368					
	20					358	10		368	2nd Half Paid	SEP 16 1955								
	20					358	10		368	1st Half Paid	MAY 24 1955	5777		368		368			
	20					358	10		368	2nd Half Paid	MAY 24 1955	13764							
	72					1292			1292	2nd Half Paid	AUG 9 1955	12881		646		646			
										1st Half Paid	MAY 7 1955	5502							

895 1901 2796 204 592 796

H 204 592 796 14276 308 14584 554 12280 1014 736

Chariton Beach, Breezy Point, Ichle Gunge Beach, Counrise Heights, No-Ba-No-Bo-Bay

Personal Special Classes, Shockey's Addition to Island

Assessment Roll and Tax List of Real Property in the Town of Shingobee,
*Indicate Type of Property: R-Residential, C-Commercial, I-Industrial, U-Utility, F-Farm

Cass County, Minnesota, for Taxes for the Year 1954.

IN WHOSE NAME ASSESSED	TO WHOM TRANSFERRED	SUBDIVISION	Sec. of Lot	Town or Block	Rng	Number of Acres of Land	TRUE AND FULL VALUATIONS			ASSESSED VALUATIONS					FINAL EQUALIZED VALUE	VALUATIONS BY SCHOOL DISTRICTS AS EQUALIZED BY DEPARTMENT OF TAXATION						SPECIAL TAXES	TOTAL TAXES	PAID	WHEN PAID	Number of Receipt	March Settlement 1955	June Settlement 1955	Penalty 1955	November Settlement 1955	Penalty 1955	Collections to First Monday in January 1956	Penalty 1956	Delinquent on First Monday in January 1956	Total Delinquent Tax and Penalty	REMARKS					
							LAND Exclusive of Structures and Improvements	BUILDINGS and Other Structures	MACHINERY Permanently Attached to Real Estate	TOTAL True and Full Value	RURAL		ALL OTHER			MACHINERY Permanently Attached to Real Estate	TOTAL ASSESSED VALUE	Total Assessed Value as Equalized by the Board of Review	District No.	District Rate	District No.																District Rate	District No.	District Rate	Tax including State Homestead	State Tax on Non-Homestead
							Dollars	Dollars	Dollars	Dollars	Dollars	Dollars	Dollars	Dollars		Dollars	Dollars	Dollars	No.	Rate	No.																Rate	No.	Rate	\$	cts.
William A & Grace Wendt		Belford's 1st Addn to Shingobee Island Plat 5, Sec. 2-141-311	1			1	5	70	mp	R	100	248	348		116	116				116	2372	60	2432	1st Half Paid MAY 31 1955 1504	1216	1216															
"	"	"	2			2	yes	"	"	R	100	250	350	70	70	70			90	1430		1430	2nd Half Paid OCT 21 1955 1504	715	715																
Harold H & Amelia F. Fillman		"	3			3	"	"	"	R	100	768	868		217	217			217	4436		4436	3rd Half Paid OCT 21 1955 1458	2215	2215																
Katherine R & Katherine D. Belford		"	4			4	"	"	"	R	100		100		25	25			25	512		512	PAID IN FULL MAY 31 1955 623	3374																	
"	"	"	5			5	"	"	"	R	100	460	560		140	140			140	2862		2862	PAID IN FULL MAY 31 1955 6197																		
			6			6																																			
			7			7																																			
			8			8																																			
			9			9																																			
			10			10																																			
			11			11																																			
			12			12																																			
			13			13																																			
			14			14																																			
			15			15																																			
			16			16																																			
			17			17																																			
			18			18																																			
			19			19																																			
			20			20																																			

500 1726 2226 70 116 392 568
 H 452
 116
 568
 11612 60 11672 7523 4149

Ball's Point
 Sunrise Heights
 Ichie Omees Beach
 Chariton Beach
 Breezy Point
 Breezy Point
 Crescent Beach
 Belford's 1st Addn to Shingobee Island

Park Point
 Personal
 Special Classes

Assessment Roll and Tax List of Real Property in the Town of Shingobee, Cass County, Minnesota, for Taxes for the Year 1954.

Form 30 (31) MILLER-BAY COMPANY, MINNEAPOLIS

*Indicate Type of Property: R-Residential, C-Commercial, I-Industrial, U-Utility, F-Farm

Table with columns: IN WHOSE NAME ASSESSED, TO WHOM TRANSFERRED, SUBDIVISION, DESCRIPTION OF PROPERTY, TRUE AND FULL VALUATIONS, ASSESSED VALUATIONS, VALUATIONS BY SCHOOL DISTRICTS AS EQUALIZED BY DEPARTMENT OF TAXATION, SOLD FOR TAXES, PAID, WHEN PAID, March Settlement 1955, June Settlement 1955, November Settlement 1955, Collections to First Monday in January 1956, Delinquent on First Monday in January 1956, Total Delinquent Tax and Penalty, REMARKS.

Vertical text on the left margin: Park Point, Sunrise Heights, Sunnyside Beach, Chariton Beach, Breezy Point, Division to Shingobee Island, Crescent Beach, Bedford's 1st Addn. to Shingobee Island.

Vertical text on the right margin: Personal, Special Classes.

Assessment Roll and Tax List of Real Property in the Town of Shingobee, Cass County, Minnesota, for Taxes for the Year 1954.

*Indicate Type of Property: R-Residential, C-Commercial, I-Industrial, U-Utility, F-Farm

Table with columns: IN WHOSE NAME ASSESSED, TO WHOM TRANSFERRED, SUBDIVISION, DESCRIPTION OF PROPERTY, TRUE AND FULL VALUATIONS, ASSESSED VALUATIONS, VALUATIONS BY SCHOOL DISTRICTS AS EQUALIZED BY DEPARTMENT OF TAXATION, TAXES, PAID, WHEN PAID, Number of Receipt, March Settlement 1955, June Settlement 1955, Penalty, November Settlement 1955, Collections to First Monday in January 1956, Delinquent on First Monday in January 1956, Total Delinquent Tax and Penalty, REMARKS.

Vertical text on the left margin: Park Point, Sunrise Heights, Sunnyside Beach, Chariton Beach, Breazy Point, Hillion to, Beach, Hillford's 1st Addn, To Shingobee Island.

Vertical text on the right margin: Personal, Special Classes.

Assessment Roll and Tax List of Real Property in the Town of Shingabeau, Cass County, Minnesota

Cass County, Minnesota, for Taxes for the Year 1954.

*Indicate Type of Property: R-Residential, C-Commercial, I-Industrial, U-Utility, F-Farm

Table with columns: IN WHOSE NAME ASSESSED, TO WHOM TRANSFERRED, SUBDIVISION, DESCRIPTION OF PROPERTY, TRUE AND FULL VALUATIONS, ASSESSED VALUATIONS, VALUATIONS BY SCHOOL DISTRICTS AS EQUALIZED BY DEPARTMENT OF TAXATION, TAXES, PAID, WHEN PAID, Number of Receipt, March Settlement 1955, June Settlement 1955, Penalty, November Settlement 1955, Penalty, Collections to First Monday in January 1956, Delinquent on First Monday in January 1956, Total Delinquent Tax and Penalty, REMARKS.

Grand Totals: 11,017.78 ... 1080 32 1112

Vertical text on the left margin: Park Point, Sunrise Heights, Sunnyside Beach, Chariton Beach, Breezy Point, Division to, Crescent Beach, Bedford's Mat Addn. to Shingabeau Island.

Vertical text on the right margin: Personal, Special Classes.

Assessment Roll and Tax List of Real Property in the _____ of _____,

*Indicate Type of Property: R-Residential, C-Commercial, I-Industrial, U-Utility, F-Farm

Form 3C (54)

Park Point
 Sunrise Heights
 Sunnyside Beach
 Chariton Beach
 Breezy Point
 President Beach
 Alfred's 1st Addn.
 to Shropshire Island

IN WHOSE NAME ASSESSED	TO WHOM TRANSFERRED	DESCRIPTION OF PROPERTY				No. School District	Indicate Homestead Yes or No	Indicate Agricultural Yes or No	Indicate Type of Property	TRUE AND FULL VALUATIONS				ASSESSED VALUATIONS					FINAL EQUALIZED VALUE									
		SUBDIVISION	Sec. or Lot	Town or Block	Rng					Number of Acres of Land	LAND Exclusive of Structures and Improvements	BUILDINGS and Other Structures	MACHINERY Permanently Attached to Real Estate	TOTAL True and Full Value	RURAL		ALL OTHER			MACHINERY Permanently Attached to Real Estate	TOTAL ASSESSED VALUE	Total Assessed Value as Equalized by the Board of Review						
															Acres	100ths	Dollars	Dollars					Dollars	Dollars	Dollars	Dollars	Dollars	Dollars
		Shady Lane																										
	Henry Heathman	7144 284 30-141-31	1																									
	Howard Ar Florence E. Helmbrecht		2																									
			3																									
			4																									
			5																									
			6																									
			7																									
			8																									
			9																									
			10																									
			11																									
			12																									
			13																									
			14																									
			15																									
			16																									
			17																									
			18																									
			19																									
			20																									

Personal Special Classes