

ASSESSMENT & TAX LIST

Shingshee

1953

INDEX TO SECTIONS

SECTION	PAGE
---------	------

Sec. 1	
" 2	
" 3	
" 4	
" 5	
" 6	
" 7	
" 8	
" 9	
" 10	
" 11	
" 12	
" 13	
" 14	
" 15	
" 16	
" 17	
" 18	
" 19	
" 20	
" 21	
" 22	
" 23	
" 24	
" 25	
" 26	
" 27	
" 28	
" 29	
" 30	
" 31	
" 32	
" 33	
" 34	
" 35	
" 36	

For Convenience of Auditor in Showing Boundaries of School Districts

Township No. 141 & 142 Range No. 31 Mer. P. M.

0	5	4	3	2	1
7	6	5	4	3	2
13	12	11	10	9	8
19	18	17	16	15	14
25	24	23	22	21	20
31	30	29	28	27	26
37	36	35	34	33	32

School District

Returns Showing Grain Received in or Handled by Elevators, Warehouses and Mills in the _____ of _____ in the _____
County of _____ for the Year Ending May 1, 1953.

NAMES OF OWNERS	ADDRESS	Bushels of Wheat	Bushels of Soy Beans	Bushels of Flax	Total No. of Bushels of Wheat, Soy Beans and Flax	★ Tax of 1/2 Mill per Bushel		Bushels of Corn	Bushels of Barley	Bushels of Rye	Bushels of Oats	Bushels of Buckwheat	Bushels of all Other Grains	Total No. Bushels Corn, Barley, Rye, Oats, Buckwheat and all Other Grains	★ Tax of 1/2 Mill Per Bushel		★ Total Tax		REMARKS			
						Dollars	Cts.								Dollars	Cts.	Dollars	Cts.				

Note ★ Assessors will not fill these Columns

REAL PROPERTY BECOMING SUBJECT TO TAXATION SINCE THE LAST PREVIOUS ASSESSMENT OR OMITTED FROM ASSESSMENT ROLLS THE PREVIOUS YEARS.
Assessment of Taxable Real Property in the _____ of _____, Minn., for the Year 1953.

NAME OF OWNER	School District	DESCRIPTION OF PROPERTY					TRUE AND FULL VALUATIONS											FINAL EQUALIZED VALUE Dollars			
		SUBDIVISION	Sec. or Lot	Twp. or Block	Rng.	Number of Acres of Land Acres 100ths	Indicate Homestead Yes or No	Indicate Agricultural Yes or No	BY WHOM VALUED	LAND Exclusive of Structures and Improvements		BUILDINGS and Other Structures	MACHINERY Permanently Attached to Real Estate	TOTAL True and Full Value	ASSESSED VALUATIONS					TOTAL ASSESSED VALUE	
										Dollars	Dollars	Dollars	Dollars	RURAL		ALL OTHER			Dollars	Dollars	
														Homestead Up to \$4,000 20%	Over \$4,000 and Non-Homestead 33 1/3%	Homestead Up to \$4,000 25%	Over \$4,000 and Non-Homestead 40%	MACHINERY Permanently Attached to Real Estate 33 1/3%	Dollars	Dollars	

Total No. of Acres _____
 Total Value as Equalized by _____
 Total Value as Assessed by _____

SUMMARY OF TAX COLLECTION

Original Levy	\$ 26,669.64
Additions	\$ 127.24
Abatements	\$ 2,6796.88
	\$ 339.08
	\$ 26457.80

COLLECTIONS

March Settlement	\$ 4539.17
June Settlement	\$ 12718.68
November Settlement	\$ 7298.96
January Settlement	\$ 337.15
	\$ 25,094.76
	\$ 1363.04
Over Collected	\$ 11.00
Under Collected	\$ 2.00
Delinquent	\$ 1372.04
	\$ 1363.04
Total	\$ _____



142-31
 Children Print
 Eskom Springs

Assessment of J

TABULAR SCHEDULE OF VALUATIONS,

RATES AND TAXES

LEVIED IN THE Town OF Shingabe

COUNTY OF CASS, STATE OF MINNESOTA

*706.76
21.06
21.142*

School District No.	VALUATION BY SCHOOL DISTRICTS				RATE OF STATE TAXES		RATE OF COUNTY TAXES										RATE OF TOWN TAXES										SCHOOL TAXES			TAXES LEVIED									
	Agri-cultural Lands	Non-Agri-cultural Lands	Personal Property	Total Value of all Property except Money and Credits	Total Rate of State Tax	Total Rate of County Tax	Rev.	R. & B.	Welfare	Bonds and Int.	A. & B. Sinking	Total Rate of County Tax	Rev.	R. & B.	Drag Tax	State Loan	Total Rate of Town Tax	Local	Special	State Loan	Deficiency	Tuition	Transportation	Local 1 Mill	Special	State Loan	Local 1 Mill	Special	State Loan	County	Rate	Amounts							
5	65376	46203	18898 4753	130477 4753	H. 5.28	107.41	28.3	15.9	50.52	10.69	2.	3.	10.	1.		20.	1.	25.				2.	16.3	4.77	49.07	181.76	70.13	1753.22	140.26	1143.10	334.52	344.123	462.40						
	65376	46203	23651	135230	N. II. 4.66 9.94												1.	50.				2.	16.3	4.77	74.07	206.76	65.10	3255.05	130.20	1061.15	310.53	482.203	714.01						
Assessed Value	Rural	All Other	Personal Property	Total																																			
Homestead	32353	3748		36101																																			
Non-Homestead	65536	9942	23651	99129																																			
Total	97889	13690	23651	135230																																			

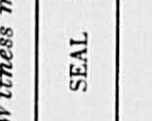
Total Levy, \$26,669.64

L. C. Peterson
 Auditor of said County and State aforesaid, do hereby certify that the foregoing is a true and correct Schedule, showing the valuation of all the taxable property, in the County of Shingabe, in said County, the several rates of Taxation and Totals of the several Tax Funds levied thereon for the year A. D. 1953.

Witness my hand and official seal, this 11th day of December A. D. 1953.

L. C. Peterson
 County Auditor.
 By *Allen Billow*
 Deputy

Total Taxes Real Estate 21,788.24
 Pers. Prop. 4,881.40
 Total 26,669.64



Assessment of 7

COLLECTIONS OF TAXES OF 1953, *Town* OF *Shingobee*, CASS COUNTY, MINNESOTA

NAME OF OWNER	FUNDS	MARCH SETTLEMENT	JUNE SETTLEMENT	NOV. SETTLEMENT	Amount Collected from Nov. 1952 to First Monday in Jan. 1953	REDUCTIONS	Total Reductions and Collected	BALANCE UNCOLLECTED	ADDITIONS	Total Uncollected to First Monday in January, 1953
		1953	1953	1953						
	State—Non-Homestead, State—Homestead,	9513 11718	22097 35022	9942 19524	626 958					
	County Revenue, County Road and Bridge, County Welfare, County Bond and Interest, <i>A. & B. Sinking</i>	62808 35288 112122 23725 4439	187712 105464 335096 70906 13266	104645 58793 186808 39528 7395	5136 2885 9168 1940 363					
1	Town Revenue, Town Road and Bridge, Town Drag, Town State Loan, <i>Telephone Cemetery Fire</i>	6658 22194 2219 5548 2219 5548	19899 66329 6633 16582 6633 16582	11093 56777 3678 9244 3678 9244	544 1815 181 454 481 454					
2	School Local 1 Mill, School Special, School State Loan, Deficiency Tuition	2220 96498	6633 22993	3697 140304	481 4723					
3	Transportation <i>C. O. O. & J.</i>	4439 3617 10586	13265 10817 31639	7396 60272 17638	363 2959 865					
4										
5										
6										
7										
8										
		453917	1291868	729896	33795					

MARCH SETTLEMENT	School District No.	LOCAL 1 MILL	SPECIAL	STATE LOAN	Totals			TOTALS
					<i>Transport</i>	<i>C. O.</i>	<i>D. & J.</i>	
	<i>A#5 Na#5</i>	579 1641	14471 82027		1158 3281	9435 26740	2761 7825	28404 121514
	Totals	2220	96498		4439	36175	10586	149918
JUNE SETTLEMENT	<i>A#5 Na#5</i>	4066 2567	101653 128338		8132 5133	66279 41838	19376 12243	199528 190117
	Totals	6633	229993		13265	108117	31639	389647
NOVEMBER SETTLEMENT	<i>A#5 Na#5</i>	1783 1914	44583 95721		3567 3829	29068 31204	8506 9132	87507 141800
	Totals	3697	140304		7396	60272	17638	229307
NOVEMBER to JANUARY	<i>A#5 Na#5</i>	174 07	4352 371		348 15	2837 121	830 35	8541 549
	Totals	181	4723		363	2958	865	9090
ADDITIONS	School District No.							
	Totals							
REDUCTIONS	School District No.							
	Totals							

added

Buildings on Lot 8 section 5-111-31

Owner		true & full	Assessed
A. S. Chase			
Paul Lundin, Donald Young, Gorden and Milton Nelson Cokato, Minn.	- - -	\$201	\$ 67
Wm. H. Schafer 3831 Hubbard Robinsdale, Minn.	- - - - -	600	200
A. S. Chase Walker, Minn.	- - - - -	30	10

Assessment Roll and Tax List of Real Property in the Town of *Down* of *Shingokee*

Cass County, Minnesota, for Taxes for the Year 1953.

Form 500 (53) BLUE-SAVE COMPANY, MINNEAPOLIS

IN WHOSE NAME ASSESSED	TO WHOM TRANSFERRED	DESCRIPTION OF PROPERTY				No. School District	Indicate Homestead Yes or No	Indicate Agricultural Yes or No	TRUE AND FULL VALUATIONS			ASSESSED VALUATIONS					FINAL EQUALIZED VALUE	SOLD FOR TAXES	VALUATIONS BY SCHOOL DISTRICTS AS EQUALIZED BY DEPARTMENT OF TAXATION						SPECIAL TAXES	TOTAL TAXES	PAID	WHEN PAID	Number of Receipt	March Settlement 1954	June Settlement 1954	November Settlement 1954	Penalty	Collections to First Monday in January 1955	Penalty	Delinquent on First Monday in January 1955	Total Delinquent Tax and Penalty	REMARKS	
		SUBDIVISION	Sec. or Lot	Town or Block	Rng.				Number of Acres of Land	LAND Exclusive of Structures and Improvements	BUILDINGS and Other Structures	MACHINERY Permanently Attached to Real Estate	TOTAL True and Full Value	RURAL Homestead Up to \$4,000 20%	Over \$4,000 and Non-Homestead 33 1/3%	ALL OTHER Homestead Up to \$4,000 25%			Over \$4,000 and Non-Homestead 40%	MACHINERY Permanently Attached to Real Estate 33 1/3%	TOTAL ASSESSED VALUE	Total Assessed Value as Equalized by the Board of Review	District No. Rate Mills	District No. Rate Mills															District No. Rate Mills
U. S. of America		NE 1/4 of NE 1/4	7	141	31		5																																
U. S. of America	Ethel Mann	NW 1/4 of NE 1/4																																					
U. S. of America		SW 1/4 of NE 1/4				37.38	70																																
U. S. of America		SE 1/4 of NE 1/4		Lot 5																																			
U. S. of America		NE 1/4 of NW 1/4																																					
U. S. of America		NW 1/4 of NW 1/4		Lot 1																																			
U. S. of America		SW 1/4 of NW 1/4		Lot 2																																			
U. S. of America	Wm. J. & Katherine S. Benzinger	SE 1/4 of NW 1/4				42.75	yes																																
U. S. of America	Ethel Mann	NE 1/4 of SW 1/4				31.42	70																																
U. S. of America	J. R. Leib, Ewart Parker, Roy Smith	NW 1/4 of SW 1/4		Lot 3		53.79	"																																
U. S. of America	"	SW 1/4 of SW 1/4		Lot 4		40.94	"																																
U. S. of America	"	SE 1/4 of SW 1/4				5.75	"																																
U. S. of America		NE 1/4 of SE 1/4		Lot 7																																			
U. S. of America		NW 1/4 of SE 1/4		Lot 6																																			
U. S. of America		SW 1/4 of SE 1/4																																					
U. S. of America		SE 1/4 of SE 1/4																																					
						42.03																																	

H 164 543 109

12850 254 13104 7064 6040

Assessment Roll and Tax List of Real Property in the Town of *Shogokee*

Form 5CD (53) JULY-1952 EDITION, MINNESOTA

IN WHOSE NAME ASSESSED	TO WHOM TRANSFERRED	DESCRIPTION OF PROPERTY				TRUE AND FULL VALUATIONS					ASSESSED VALUATIONS					FINAL EQUALIZED VALUE		
		SUBDIVISION	Sec. or Lot	Town or Block	Rng.	Number of Acres of Land	LAND Exclusive of Structures and Improvements	BUILDINGS and Other Structures	MACHINERY Permanently Attached to Real Estate	TOTAL True and Full Value	RURAL		ALL OTHER		MACHINERY Permanently Attached to Real Estate		TOTAL ASSESSED VALUE	Total Assessed Value as Equalized by the Board of Review
											Acres 100ths	Homestead Up to \$4,000 20%	Over \$4,000 and Non-Homestead 33 1/3%	Homestead Up to \$4,000 25%				
U. S. of America		NE 1/4 of NE 1/4																
<i>Harold Nicely & L. Nicely</i>		NW 1/4 of NE 1/4																
U. S. of America		SW 1/4 of NE 1/4																
U. S. of America		SE 1/4 of NE 1/4																
<i>Leonard P. Peterson</i>	<i>1/2 Edward & Clara</i>	NW 1/4 of NW 1/4																
<i>Clarence R. & Agnes J. Brady</i>		NE 1/4 of NW 1/4																
<i>Leonard P. Peterson</i>	<i>1/2 Edward & Clara</i>	NW 1/4 of NW 1/4																
<i>Leonard P. Peterson</i>		SW 1/4 of NW 1/4																
U. S. of America		SE 1/4 of NW 1/4																
<i>John Littlejohn</i>		all NW 1/4 of NE 1/4																
U. S. of America		NE 1/4 of SW 1/4																
U. S. of America		NW 1/4 of SW 1/4																
U. S. of America		SW 1/4 of SW 1/4																
U. S. of America		SE 1/4 of SW 1/4																
U. S. of America		NE 1/4 of SE 1/4																
U. S. of America		NW 1/4 of SE 1/4																
U. S. of America		SW 1/4 of SE 1/4																
U. S. of America		SE 1/4 of SE 1/4																

184 43

Cass County, Minnesota, for Taxes for the Year 1953.

SOLD FOR TAXES	VALUATIONS BY SCHOOL DISTRICTS AS EQUALIZED BY DEPARTMENT OF TAXATION						Tax including State Homestead	State Tax on Non-Homestead	SPECIAL TAXES	TOTAL TAXES	PAID	WHEN PAID	Number of Receipt	March Settlement 1954	June Settlement 1954	Penalty	November Settlement 1954	Penalty	Collections to First Monday in January 1955	Penalty	Delinquent on First Monday in January 1955	Total Delinquent Tax and Penalty	REMARKS
	District No.	District No.	District No.	District No.	District No.	District No.																	
	Rate	Rate	Rate	Rate	Rate	Rate																	
	Mills	Mills	Mills	Mills	Mills	Mills																	
1																							
2																							
3																							
4																							
5																							
6																							
7																							
8																							
9																							
10																							
11																							
12																							
13																							
14																							
15																							
16																							
17																							
18																							
19																							
20																							

H 203 439 659

11976 212

12188

5347

6655

186

Form 507 (53) ULLS-WVA COMPANY, MINNEAPOLIS

Table with columns: IN WHOSE NAME ASSESSED, TO WHOM TRANSFERRED, DESCRIPTION OF PROPERTY, TRUE AND FULL VALUATIONS, ASSESSED VALUATIONS, VALUATIONS BY SCHOOL DISTRICTS AS EQUALIZED BY DEPARTMENT OF TAXATION, SOLD FOR TAXES, PAID, WHEN PAID, Number of Receipt, March Settlement 1954, June Settlement 1954, November Settlement 1954, Collections to First Monday in January 1955, Delinquent on First Monday in January 1955, Total Delinquent Tax and Penalty, REMARKS. Rows include property owners like Robert E. + Mary S. Mc Carty, Edward + Adell Bush, Arthur S. Grupe, Cleanna Thoe, Char. + Wm. L. Clean, Arthur L. Thoe, A. S. Grupe, Verne A. + Elaine L. Johnson, O. H. + Virgie L. Oheim, U. S. of America, Robert E. + Mary S. Mc Carty, M. B. + Ethel Freeman, U. S. of America.

42-51

Chippewa Point

Kabeokone Springs

of January Beach

Under Protest

13509 1518

17849 12747 50 1380

4391 116 1737 31484 542 32026

410 78

Assessment Roll and Tax List of Real Property in the Town of Shingobe

Cass County, Minnesota, for Taxes for the Year 1953.

Form 567 (25)

IN WHOSE NAME ASSESSED	TO WHOM TRANSFERRED	DESCRIPTION OF PROPERTY				No. School District	Indicate Homestead Yes or No	Indicate Agricultural Yes or No	TRUE AND FULL VALUATIONS					ASSESSED VALUATIONS					FINAL EQUALIZED VALUE	SOLD FOR TAXES	VALUATIONS BY SCHOOL DISTRICTS AS EQUALIZED BY DEPARTMENT OF TAXATION						SPECIAL TAXES	TOTAL TAXES	PAID	WHEN PAID	Number of Receipt	March Settlement 1954	June Settlement 1954	November Settlement 1954	Penalty	Collections to First Monday in January 1955	Penalty	Delinquent on First Monday in January 1955	Total Delinquent Tax and Penalty	REMARKS										
		SUBDIVISION	Sec. or Lot	Town or Block	Rng.				Number of Acres of Land	LAND Exclusive of Structures and Improvements	BUILDINGS and Other Structures	MACHINERY Permanently Attached to Real Estate	TOTAL True and Full Value	RURAL		ALL OTHER		MACHINERY Permanently Attached to Real Estate			TOTAL ASSESSED VALUE	Total Assessed Value as Equalized by the Board of Review	District No.	District No.	District No.	District No.															District No.	District No.	Tax including State Homestead	State Tax on Non-Homestead						
														Homestead Up to \$4,000	Over \$4,000 and Non-Homestead	Homestead Up to \$4,000	Over \$4,000 and Non-Homestead																												Mills	Mills	Mills	Mills	Mills	Mills
														20%	33 1/3%	25%	40%																																	
Adolph M. Fredson	D. J. Tobin	1/2 of NE 1/4	12	141	31	20	5	70								1	54	982	26	1008	1	2nd Half Paid	OCT 21 1954	727	504	504																								
		3/4 of NW 1/4				20										2	54	982	26	1008	2																													
Lloyd & Hazel Alborn	Melvin L. & Emily L. Killard	1/2 of SE 1/4 of NE 1/4 except 71-3rd of N. 40 rods 18				2										4	77	1400		1400	4	PAID IN FULL	FEB 20 1954	1749	1400																									
		NE 1/4 of NW 1/4														5	10	182	04	186	5	PAID IN FULL	MAY 27 1954	737	186																									
State of Minnesota		NW 1/4 of NW 1/4 Lot 1														6					6																													
		SW 1/4 of NW 1/4														7					7																													
		SE 1/4 of NW 1/4														8					8																													
		NE 1/4 of SW 1/4														10					10																													
State of Minnesota		NW 1/4 of SW 1/4														11					11																													
U. S. of America		SW 1/4 of SW 1/4														12					12																													
		SE 1/4 of SW 1/4														13					13																													
		NE 1/4 of SE 1/4														15					15																													
		NW 1/4 of SE 1/4														16					16																													
		SW 1/4 of SE 1/4														17					17																													
		SE 1/4 of SE 1/4														18					18																													
																19					19																													
																20					20																													
																	3546	56		3602					1400	690	504																							

42-31

Chippewa Point

Fabekous Springs of Living Beach

Assessment Roll and Tax List of Real Property in the Town of Shingler

Cass County, Minnesota, for Taxes for the Year 1953.

Table with columns: IN WHOSE NAME ASSESSED, TO WHOM TRANSFERRED, DESCRIPTION OF PROPERTY, TRUE AND FULL VALUATIONS, ASSESSED VALUATIONS (RURAL, ALL OTHER), VALUATIONS BY SCHOOL DISTRICTS, TAXES (SOLD FOR, SPECIAL, TOTAL), PAID, WHEN PAID, Number of Receipt, March Settlement, June Settlement, November Settlement, Collections to First Monday, Delinquent on First Monday, Total Delinquent Tax and Penalty, REMARKS. Includes handwritten entries for Howard Benn, Mrs Bernard Eckman, Ada E. & Frank Bernard Eckman, Basil Cunningham & Lucille Bajula, Alice Marie Alder, Martin H. & Marjorie Lehman, Olaf Norby, Bessie D. Woodworth, Bessie Andrew.

Handwritten sum: 4116, 956

17374 226 17600

9783 5925

1892

Assessment Roll and Tax List of Real Property in the Town of Spring Lake

Cass County, Minnesota, for Taxes for the Year 1953.

Form 501 (53) WAGO-STATE COMPT. BUREAU

Main table with columns: IN WHOSE NAME ASSESSED, TO WHOM TRANSFERRED, DESCRIPTION OF PROPERTY, TRUE AND FULL VALUATIONS, ASSESSED VALUATIONS, VALUATIONS BY SCHOOL DISTRICTS AS EQUALIZED BY DEPARTMENT OF TAXATION, TAXES, PAID, WHEN PAID, Number of Receipt, March Settlement 1954, June Settlement 1954, November Settlement 1954, Collections to First Monday in January 1955, Delinquent on First Monday in January 1955, Total Delinquent Tax and Penalty, REMARKS.

U. S. of America, U. S. of America, State of Minnesota, U. S. of America, State of Minnesota, State of Minnesota, U. S. of America, U. S. of America, U. S. of America, State of Minnesota, U. S. of America, U. S. of America, U. S. of America, A. V. Norton, U. S. of America, U. S. of America, Marion Hamlin, U. S. of America

1 NW 1/4 of NE 1/4 Lot 1 13 14 31 5
2 NW 1/4 of NE 1/4 Lot 2
3 SW 1/4 of NE 1/4 Lot 6
4 SE 1/4 of NE 1/4 Lot 5
5 Lot 4
6 NE 1/4 of NW 1/4 Lot 1
7 NW 1/4 of NW 1/4 Lot 3
8 SW 1/4 of NW 1/4
9 SE 1/4 of NW 1/4
10 Lot 8
11 NE 1/4 of SW 1/4
12 NW 1/4 of SW 1/4
13 SW 1/4 of SW 1/4
14 SE 1/4 of SW 1/4 less Ry 37 yes
15
16 NE 1/4 of SE 1/4
17 NW 1/4 of SE 1/4
18 SW 1/4 of SE 1/4 40
19 SE 1/4 of SE 1/4
20 m

Table with columns: VALUATIONS BY SCHOOL DISTRICTS AS EQUALIZED BY DEPARTMENT OF TAXATION, District No., District Rate, District No., District Rate, District No., District Rate, District No., District Rate, District No., District Rate, Tax including State Homestead, State Tax on Non-Homestead, SPECIAL TAXES, TOTAL TAXES.

Table with columns: SOLD FOR TAXES, PAID, WHEN PAID, Number of Receipt, March Settlement 1954, June Settlement 1954, November Settlement 1954, Collections to First Monday in January 1955, Delinquent on First Monday in January 1955, Total Delinquent Tax and Penalty, REMARKS.

2nd Half Paid OCT 29 1954 4099
1st Half Paid MAY 28 1954 7367
2095 2095
PAID IN FULL DEC 7 1954 1008
1008 88
2045 2045 1008

142-31 Chipewagon Point Lakeview Springs of Iowa Beach

Assessment Roll and Tax List of Real Property in the *Town of Shingle*

Cass County, Minnesota, for Taxes for the Year 1953.

Form 503 (53) WLLR-DIVISION, MINNAPOLIS

IN WHOSE NAME ASSESSED	TO WHOM TRANSFERRED	DESCRIPTION OF PROPERTY						TRUE AND FULL VALUATIONS					ASSESSED VALUATIONS					FINAL EQUALIZED VALUE	
		SUBDIVISION	Sec. or Lot	Town or Block	Rng.	Number of Acres of Land		LAND Exclusive of Structures and Improvements	BUILDINGS and Other Structures	MACHINERY Permanently Attached to Real Estate	TOTAL True and Full Value	RURAL		ALL OTHER		MACHINERY Permanently Attached to Real Estate 33 1/8 %	TOTAL ASSESSED VALUE		Total Assessed Value as Equalized by the Board of Review
						Acres	100ths					Homestead Up to \$4,000 20%	Over \$4,000 and Non-Homestead 33 1/8 %	Homestead Up to \$4,000 25%	Over \$4,000 and Non-Homestead 40%				
State of Minnesota		NE 1/4 of NE 1/4				14 141 31													
M.B. & L.D. Freeman & F.W. Janowski		NW 1/4 of NE 1/4				37 03													
U. S. of America		SW 1/4 of NE 1/4																	
U. S. of America		SE 1/4 of NE 1/4																	
U. S. of America		<i>Lot 1</i>				13 14													
U. S. of America		NE 1/4 of NW 1/4																	
U. S. of America		NW 1/4 of NW 1/4																	
U. S. of America		SW 1/4 of NW 1/4																	
U. S. of America		SE 1/4 of NW 1/4																	
U. S. of America		NE 1/4 of SW 1/4																	
U. S. of America		NW 1/4 of SW 1/4																	
U. S. of America		SW 1/4 of SW 1/4																	
U. S. of America		SE 1/4 of SW 1/4																	
U. S. of America		NE 1/4 of SE 1/4																	
U. S. of America		NW 1/4 of SE 1/4																	
U. S. of America		SW 1/4 of SE 1/4																	
U. S. of America		SE 1/4 of SE 1/4																	

SOLD FOR TAXES	VALUATIONS BY SCHOOL DISTRICTS AS EQUALIZED BY DEPARTMENT OF TAXATION						Tax including State Homestead	State Tax on Non-Homestead	SPECIAL TAXES	TOTAL TAXES	PAID	WHEN PAID	Number of Receipt	March Settlement 1954	June Settlement 1954	Penalty 1954	November Settlement 1954	Penalty 1954	Collections to First Monday in January 1955	Penalty 1955	Delinquent on First Monday in January 1955	Total Delinquent Tax and Penalty	REMARKS
	District No.	District No.	District No.	District No.	District No.	District No.																	
	Rate	Rate	Rate	Rate	Rate	Rate																	
	Mills	Mills	Mills	Mills	Mills	Mills																	
	Dollars	Dollars	Dollars	Dollars	Dollars	Dollars																	
	District No. 5	District No. 9																					
1																							
2	100					18 18	46 1/2		18 64		Balance Paid	AUG 30 1954	125 64										
3											Part Paid	MAY 25 1954	72 27	10 00			86 4						
4																							
5																							
6																							
7																							
8																							
9																							
10																							
11																							
12																							
13																							
14																							
15																							
16																							
17																							
18																							
19																							
20																							

142-31
Chippewa Point
Kabeokan Springs
Bjilney Beach

Assessment Roll and Tax List of Real Property in the Town of Springdale

Cass County, Minnesota, for Taxes for the Year 1953.

Form 500 (53) JULY-24-50 REVISED

IN WHOSE NAME ASSESSED	TO WHOM TRANSFERRED	DESCRIPTION OF PROPERTY					No. School District		Indicate Homestead Yes or No		Indicate Agricultural Yes or No		TRUE AND FULL VALUATIONS								ASSESSED VALUATIONS								FINAL EQUALIZED VALUE Dollars
		SUBDIVISION	Sec. of Lot	Town or Block	Rng.	Number of Acres of Land Acres 100ths	No. School District	No.	No.	LAND Exclusive of Structures and Improvements	BUILDINGS and Other Structures	MACHINERY Permanently Attached to Real Estate	TOTAL True and Full Value	RURAL		ALL OTHER		MACHINERY Permanently Attached to Real Estate	TOTAL ASSESSED VALUE	Total Assessed Value as Equalized by the Board of Review									
														Homestead Up to \$4,000 20%	Over \$4,000 and Non- Homestead 33 1/3%	Homestead Up to \$4,000 25%	Over \$4,000 and Non- Homestead 40%												
Dollars													Dollars	Dollars	Dollars	Dollars	Dollars	Dollars	Dollars										
U. S. of America		1	NE 1/4 of NE 1/4		15 141 31	5																							
U. S. of America		2	NW 1/4 of NE 1/4																										
U. S. of America		3	SW 1/4 of NE 1/4																										
U. S. of America	<i>Apel A. & Edna M. Mortensen</i>	4	SE 1/4 of NE 1/4	<i>less 2 acc</i>	38	70																							
State of Minnesota	<i>2 acc of 1/4 of 1/4 of NE 1/4</i>	5																											
U. S. of America		6	NE 1/4 of NW 1/4																										
U. S. of America		7	NW 1/4 of NW 1/4																										
U. S. of America		8	SW 1/4 of NW 1/4																										
U. S. of America		9	SE 1/4 of NW 1/4																										
U. S. of America		10																											
U. S. of America		11	NE 1/4 of SW 1/4																										
U. S. of America		12	NW 1/4 of SW 1/4																										
U. S. of America		13	SW 1/4 of SW 1/4																										
U. S. of America		14	SE 1/4 of SW 1/4																										
U. S. of America		15	NE 1/4 of SE 1/4																										
U. S. of America		16	NW 1/4 of SE 1/4																										
U. S. of America		17	SW 1/4 of SE 1/4																										
U. S. of America		18	SE 1/4 of SE 1/4																										
U. S. of America		19																											
U. S. of America		20																											

SOLD FOR TAXES	VALUATIONS BY SCHOOL DISTRICTS AS EQUALIZED BY DEPARTMENT OF TAXATION						Tax including State Homestead Mills	State Tax on Non-Homestead 4.66 Mills	SPECIAL TAXES	TOTAL TAXES	PAID	WHEN PAID Month Day Year	Number of Receipt	March Settlement 1954	June Settlement 1954	November Settlement 1954	Penalty	Collections to First Monday in January 1955	Penalty	Delinquent on First Monday in January 1955	Total Delinquent Tax and Penalty	REMARKS
	District No. Rate Mills	District No. Rate Mills	District No. Rate Mills	District No. Rate Mills	District No. Rate Mills	District No. Rate Mills																

101 *1836 48* *1884* *2nd Half Paid OCT 30 1954 16374*
1st Half Paid MAY 31 1954 12970 *942* *942*

76

101 *1836 48* *1884* *942* *942*

Springdale, Minn. Chippewa Point, Ironwood Springs, Ottertail, Washburn, Wisconsin

Assessment Roll and Tax List of Real Property in the Town of Shingobee

Cass County, Minnesota, for Taxes for the Year 1953.

Form 5CD (53) MILLER-BEWE COMPANY, MINNEAPOLIS

IN WHOSE NAME ASSESSED	TO WHOM TRANSFERRED	DESCRIPTION OF PROPERTY				TRUE AND FULL VALUATIONS				ASSESSED VALUATIONS						FINAL EQUALIZED VALUE		
		SUBDIVISION	Sec. or Lot	Town or Block	Rng.	Number of Acres of Land	Machinery Permanently Attached to Real Estate	LAND Exclusive of Structures and Improvements	BUILDINGS and Other Structures	TOTAL True and Full Value	RURAL		ALL OTHER		MACHINERY Permanently Attached to Real Estate		TOTAL ASSESSED VALUE	Total Assessed Value as Equalized by the Board of Review
											Acres	100ths	Homestead Up to \$4,000 20%	Over \$4,000 and Non-Homestead 33 1/3%				
State of Minnesota		NE 1/4 of NE 1/4		16 141 31														
State of Minnesota		NW 1/4 of NE 1/4																
State of Minnesota		SW 1/4 of NE 1/4																
State of Minnesota		SE 1/4 of NE 1/4																
State of Minnesota		NE 1/4 of NW 1/4																
State of Minnesota		NW 1/4 of NW 1/4																
State of Minnesota		SW 1/4 of NW 1/4																
State of Minnesota		SE 1/4 of NW 1/4																
State of Minnesota		NE 1/4 of SW 1/4																
State of Minnesota		NW 1/4 of SW 1/4																
State of Minnesota		SW 1/4 of SW 1/4																
State of Minnesota		SE 1/4 of SW 1/4																
State of Minnesota	John P. Sullivan	NE 1/4 of SE 1/4																
State of Minnesota		NW 1/4 of SE 1/4																
State of Minnesota		SW 1/4 of SE 1/4																
State of Minnesota		SE 1/4 of SE 1/4																

SOLD FOR TAXES	VALUATIONS BY SCHOOL DISTRICTS AS EQUALIZED BY DEPARTMENT OF TAXATION						Tax Including State Homestead	State Tax on Non-Homestead	SPECIAL TAXES	TOTAL TAXES	PAID	WHEN PAID	Number of Receipt	March Settlement 1954	June Settlement 1954	November Settlement 1954	Penalty	Collections to First Monday in January 1955	Penalty	Delinquent on First Monday in January 1955	Total Delinquent Tax and Penalty	REMARKS
	District No.	District No.	District No.	District No.	District No.	District No.																
	Rate	Rate	Rate	Rate	Rate	Rate																
1																						
2																						
3																						
4																						
5																						
6																						
7																						
8																						
9																						
10																						
11																						
12																						
13																						
14																						
15																						
16																						
17																						
18																						
19																						
20																						

John P. Sullivan

40 70

40

SOLD FOR TAXES 133

2418 62

2480

Cancelled 11-8-54

133

2418 62

2480

2480

Assessment Roll and Tax List of Real Property in the *Town of Anigeres*

Cass County, Minnesota, for Taxes for the Year 1953.

Form 300 (53) MILES-DAVIS COMPANY, MINNEAPOLIS

IN WHOSE NAME ASSESSED	TO WHOM TRANSFERRED	DESCRIPTION OF PROPERTY						TRUE AND FULL VALUATIONS												FINAL EQUALIZED VALUE	SOLD FOR TAXES	VALUATIONS BY SCHOOL DISTRICTS AS EQUALIZED BY DEPARTMENT OF TAXATION						SPECIAL TAXES	TOTAL TAXES	PAID	WHEN PAID	Number of Receipt	March Settlement 1954	June Settlement 1954	November Settlement 1954	Penalty	Collections to First Monday in January 1955	Penalty	Delinquent on First Monday in January 1955	Total Delinquent Tax and Penalty	REMARKS
		SUBDIVISION	Sec. of Lot	Town or Block	Rng.	Number of Acres of Land	Acres	100ths	LAND Exclusive of Structures and Improvements	BUILDINGS and Other Structures	MACHINERY Permanently Attached to Real Estate	TOTAL True and Full Value	RURAL		ALL OTHER		MACHINERY Permanently Attached to Real Estate	TOTAL ASSESSED VALUE	Total Assessed Value as Equalized by the Board of Review			District No.	District No.	District No.	District No.	District No.	District No.														
U. S. of America		NE 1/4 of NE 1/4	23	141	31																																				
U. S. of America		NW 1/4 of NE 1/4																																							
U. S. of America		SW 1/4 of NE 1/4																																							
U. S. of America		SE 1/4 of NE 1/4																																							
U. S. of America		NE 1/4 of NW 1/4																																							
U. S. of America		NW 1/4 of NW 1/4																																							
U. S. of America		SW 1/4 of NW 1/4																																							
U. S. of America		SE 1/4 of NW 1/4																																							
Mattie Krueger		NE 1/4 of SW 1/4				40																																			
"		NW 1/4 of SW 1/4				40																																			
"		SW 1/4 of SW 1/4				40																																			
"		SE 1/4 of SW 1/4				40																																			
U. S. of America		NE 1/4 of SE 1/4																																							
U. S. of America		NW 1/4 of SE 1/4																																							
Annie Marie Jensen & Caroline L. Lindstrom		SW 1/4 of SE 1/4				40																																			
"		SE 1/4 of SE 1/4 Lot 1				29.50																																			
						249 50																																			

2nd Half Paid OCT 29 1954
 1st Half Paid MAY 31 1954
 2nd Half Paid OCT 29 1954
 1st Half Paid MAY 31 1954
 2nd Half Paid OCT 29 1954
 1st Half Paid MAY 31 1954
 2nd Half Paid OCT 29 1954
 1st Half Paid MAY 31 1954

3728- 3728-

18 PAID IN FULL APR 12 1954 } 5039
 19 PAID IN FULL APR 12 1954 }

1678- 4046-

9452 3728

Assessment Roll and Tax List of Real Property in the Town of Shingobee

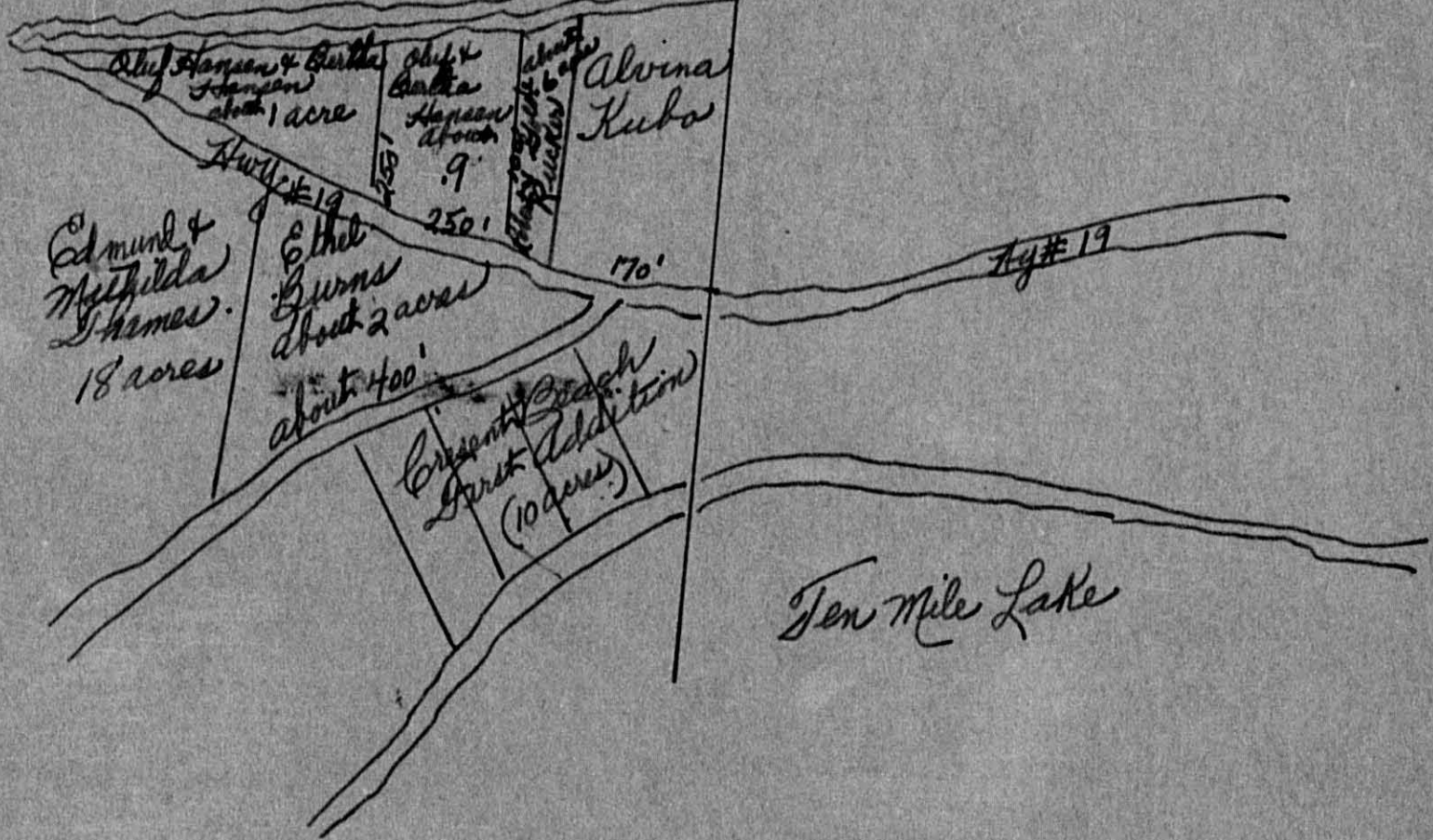
Cass County, Minnesota, for Taxes for the Year 1953.

Table with columns: IN WHOSE NAME ASSESSED, TO WHOM TRANSFERRED, DESCRIPTION OF PROPERTY, TRUE AND FULL VALUATIONS, ASSESSED VALUATIONS, VALUATIONS BY SCHOOL DISTRICTS AS EQUALIZED BY DEPARTMENT OF TAXATION, SOLD FOR TAXES, PAID, WHEN PAID, Number of Receipt, March Settlement 1954, June Settlement 1954, November Settlement 1954, Collections to First Monday in January 1955, Delinquent on First Monday in January 1955, Total Delinquent Tax and Penalty, REMARKS.

Lot 3 - 26-141-31

Portage Lake

Sec 26
Sec 25



This is according to information from H. W. Jensen's total acreage of Lot 3 Sec 26 is 33.75 acres

Assessment Roll and Tax List of Real Property in the Town of Shingorlee

Form 5CD (53) JULY-24-50 EDP:W.P.

WHOSE NAME ASSESSED	TO WHOM TRANSFERRED	DESCRIPTION OF PROPERTY			TRUE AND FULL VALUATIONS										FINAL EQUALIZED VALUE							
		SUBDIVISION	Sec. or Lot	Town or Block	Rng.	Number of Acres of Land	No. School District	Indicate Homestead Yes or No	Indicate Agricultural Yes or No	LAND Exclusive of Structures and Improvements		BUILDINGS and Other Structures	MACHINERY Permanently Attached to Real Estate	TOTAL True and Full Value		ASSESSED VALUATIONS				Total Assessed Value as Equalized by the Board of Review		
										RURAL		ALL OTHER	MACHINERY Permanently Attached to Real Estate			TOTAL ASSESSED VALUE	Total Assessed Value as Equalized by the Board of Review					
										Homestead Up to \$4,000	Over \$4,000 and Non-Homestead							Homestead Up to \$4,000	Over \$4,000 and Non-Homestead			
<i>Ethel B. Burns</i>	<i>Approx. E. 400' of that part of Lot 3 lying between 1/4 of N E 1/4 Sec. 19 and Beach 26 141 31. That additional by # 19.</i>	<i>3</i>	<i>2</i>	<i>5</i>	<i>2</i>	<i>5</i>	<i>Yes</i>	<i>No</i>														
<i>Oluf Hanson & Bertha Hanson</i>	<i>all that part of Lot 3 lying N. of Sec. # 19 & N. of Bjorkman Tract</i>	<i>4</i>	<i>1</i>	<i>7a</i>	<i>1</i>	<i>7a</i>	<i>No</i>	<i>No</i>														

3

Cass County, Minnesota, for Taxes for the Year 1953.

SOLD FOR TAXES	VALUATIONS BY SCHOOL DISTRICTS AS EQUALIZED BY DEPARTMENT OF TAXATION						Tax including State Homestead	State Tax on Non-Homestead	SPECIAL TAXES	TOTAL TAXES	PAID	WHEN PAID	Number of Receipt	March Settlement 1954	June Settlement 1954	Penalty Settlement 1954	November Settlement 1954	Penalty	Collections to First Monday in January 1955	Penalty	Delinquent on First Monday in January 1955	Total Delinquent Tax and Penalty	REMARKS
	District No.	District No.	District No.	District No.	District No.	District No.																	
	Rate	Rate	Rate	Rate	Rate	Rate																	
	Mills	Mills	Mills	Mills	Mills	Mills																	
<i>1</i>	<i>H 131</i>						<i>2382</i>		<i>2382</i>														
<i>2</i>																							
<i>3</i>																							
<i>4</i>																							
<i>5</i>	<i>33</i>						<i>600</i>	<i>16</i>	<i>616</i>				<i>2nd Half Paid OCT 26 1954</i>										
<i>6</i>													<i>MAY 28 1954</i>										
<i>7</i>																							
<i>8</i>																							
<i>9</i>																							
<i>10</i>																							
<i>11</i>																							
<i>12</i>																							
<i>13</i>																							
<i>14</i>																							
<i>15</i>																							
<i>16</i>																							
<i>17</i>																							
<i>18</i>																							
<i>19</i>																							
<i>20</i>																							
	<i>H 131</i>																						
	<i>23</i>																						
	<i>164</i>																						

Shingorlee Island, Chipewah Point, Kabeok Springs, Otterway Beach

Assessment Roll and Tax List of Real Property in the Town of Singohee

Cass County, Minnesota, for Taxes for the Year 1953.

IN WHOSE NAME ASSESSED	TO WHOM TRANSFERRED	DESCRIPTION OF PROPERTY				TRUE AND FULL VALUATIONS											FINAL EQUALIZED VALUE	VALUATIONS BY SCHOOL DISTRICTS AS EQUALIZED BY DEPARTMENT OF TAXATION																REMARKS											
		SUBDIVISION	Sec. or Lot	Town or Block	Rng.	Number of Acres of Land Acres 100ths	No. School District	Indicate Homestead Yes or No	Indicate Agricultural Yes or No	ASSESSED VALUATIONS				TOTAL ASSESSED VALUE	Total Assessed Value as Equalized by the Board of Review	VALUATIONS BY SCHOOL DISTRICTS AS EQUALIZED BY DEPARTMENT OF TAXATION						SPECIAL TAXES	TOTAL TAXES	PAID	WHEN PAID	Number of Receipt	March Settlement 1954	June Settlement 1954	Penalty	November Settlement 1954	Penalty	Collections to First Monday in January 1955	Penalty		Delinquent on First Monday in January 1955	Total Delinquent Tax and Penalty									
										LAND Exclusive of Structures and Improvements	BUILDINGS and Other Structures	MACHINERY Permanently Attached to Real Estate	TOTAL True and Full Value			RURAL		ALL OTHER		MACHINERY Permanently Attached to Real Estate	MILLS																District No.	Rate	District No.	Rate	District No.	Rate	District No.	Rate	
																Homestead Up to \$4,000 20%		Over \$4,000 and Non-Homestead 33 1/8%	Homestead Up to \$4,000 25%																										Over \$4,000 and Non-Homestead 40%
U. S. of America		NE 1/4 of NE 1/4	27	141	31		5																																						
U. S. of America		NW 1/4 of NE 1/4																																											
U. S. of America		SW 1/4 of NE 1/4																																											
U. S. of America		SE 1/4 of NE 1/4																																											
U. S. of America		NW 1/4 of NW 1/4 Lot 1																																											
U. S. of America		NW 1/4 of NW 1/4 Lot 2																																											
U. S. of America		SW 1/4 of NW 1/4	40				no																																						
U. S. of America		SE 1/4 of NW 1/4																																											
U. S. of America		NE 1/4 of SW 1/4																																											
Ernest A. & Elna L. Collins		NW 1/4 of SW 1/4																																											
U. S. of America		SW 1/4 of SW 1/4	40				yes																																						
U. S. of America		SE 1/4 of SW 1/4																																											
U. S. of America		NE 1/4 of SE 1/4																																											
George Ewen		NW 1/4 of SE 1/4	40				no																																						
" "		SW 1/4 of SE 1/4	40				"																																						
" "		SE 1/4 of SE 1/4	40				"																																						

142-51 Singohee Island Chipman Point Kabecon Springs of Iowa Beach

Assessment Roll and Tax List of Real Property in the Town of Shinglee

Form SCD (53) JULY 1954 EDITION, MINNESOTA

IN WHOSE NAME ASSESSED	TO WHOM TRANSFERRED	DESCRIPTION OF PROPERTY					TRUE AND FULL VALUATIONS										FINAL EQUALIZED VALUE	
		SUBDIVISION	Sec. or Lot	Town or Block	Rng.	Number of Acres of Land	LAND Exclusive of Structures and Improvements	BUILDINGS and Other Structures	MACHINERY Permanently Attached to Real Estate	TOTAL True and Full Value	RURAL		ALL OTHER		MACHINERY Permanently Attached to Real Estate	TOTAL ASSESSED VALUE		Total Assessed Value as Equalized by the Board of Review
											Acres	100ths	Homestead Up to \$4,000 20%	Over \$4,000 and Non-Homestead 33 1/3%				
<i>Ervin Shoffner</i>		NE 1/4 of NE 1/4 Lot 1	28	141	31	24	75	5	Yr.									
U. S. of America		NW 1/4 of NE 1/4 Lot 2																
U. S. of America		SW 1/4 of NE 1/4 Lot 11																
		SE 1/4 of NE 1/4																
State of Minnesota		NE 1/4 of NW 1/4 Lot 3																
State of Minnesota		NW 1/4 of NW 1/4 Lot 4																
U. S. of America		SW 1/4 of NW 1/4 Lot 5																
		SE 1/4 of NW 1/4																
U. S. of America		NE 1/4 of SW 1/4																
U. S. of America		NW 1/4 of SW 1/4 Lot 6																
State of Minnesota		SW 1/4 of SW 1/4 Lot 7																
		SE 1/4 of SW 1/4 Lot 8																
U. S. of America		NE 1/4 of SE 1/4 Lot 10																
		NW 1/4 of SE 1/4																
<i>Earle & Pauline Eagenstos</i>		SW 1/4 of SE 1/4 Lot 9	28	50				70										
"	"	SE 1/4 of SE 1/4						40										
								43										

Cass County, Minnesota, for Taxes for the Year 1953.

SOLD FOR TAXES	VALUATIONS BY SCHOOL DISTRICTS AS EQUALIZED BY DEPARTMENT OF TAXATION						Tax including State Homestead	State Tax on Non-Homestead	SPECIAL TAXES	TOTAL TAXES	PAID	WHEN PAID	Number of Receipt	March Settlement 1954	June Settlement 1954	November Settlement 1954	Penalty	Collections to First Monday in January 1955	Penalty	Delinquent on First Monday in January 1955	Total Delinquent Tax and Penalty	REMARKS	
	District No.	Rate	District No.	Rate	District No.	Rate																	
	Dollars	Mills	Dollars	Mills	Dollars	Mills																	
1	91	75					1364		1364	1	PAID IN FULL	MAY 18 1954	6339										
2										2													
3										3													
4										4													
5										5													
6										6													
7										7													
8										8													
9										9													
10										10													
11										11													
12										12													
13										13													
14										14													
15										15													
16										16													
17										17													
18										18	49	890	22	912	18	PAID IN FULL	MAY 31 1954	12981		912			
19										19	53	964	24	988	19	PAID IN FULL	MAY 31 1954			988			
20										20	49	3218	46	3264	20								

Shinglee Island
Chippewa Point
Kabeokas Springs
Ojibway
Beach

Assessment Roll and Tax List of Real Property in the

Town of *Shinglee*

Cass County, Minnesota, for Taxes for the Year 1953.

Form SCD (53) WALKER-BAYNE COMPANY, MINNEAPOLIS

IN WHOSE NAME ASSESSED	TO WHOM TRANSFERRED	DESCRIPTION OF PROPERTY				TRUE AND FULL VALUATIONS										FINAL EQUALIZED VALUE	VALUATIONS BY SCHOOL DISTRICTS AS EQUALIZED BY DEPARTMENT OF TAXATION							PAID	WHEN PAID	Number of Receipt	March Settlement 1954	June Settlement 1954	November Settlement 1954	Penalty	Collections to First Monday in January 1955	Penalty	Delinquent on First Monday in January 1955	Total Delinquent Tax and Penalty	REMARKS			
		Subdivision	Sec. or Lot	Town or Block	Rng.	Number of Acres of Land	LAND Exclusive of Structures and Improvements	BUILDINGS and Other Structures	MACHINERY Permanently Attached to Real Estate	TOTAL True and Full Value	RURAL		ALL OTHER		MACHINERY Permanently Attached to Real Estate		TOTAL ASSESSED VALUE	Total Assessed Value as Equalized by the Board of Review	District No.	District No.	District No.	District No.	District No.													District No.	Tax including State Homestead	State Tax on Non-Homestead
<i>Earle + Pauline Bagenstos</i>		NE 1/4 of NE 1/4				33 141 31	40	5 70																														
State of Minnesota		NW 1/4 of NE 1/4				Lot 1																																
State of Minnesota		SW 1/4 of NE 1/4																																				
U. S. of America		SE 1/4 of NE 1/4																																				
U. S. of America		NE 1/4 of NW 1/4				Lot 2																																
U. S. of America		NW 1/4 of NW 1/4				Lot 3																																
U. S. of America		SW 1/4 of NW 1/4																																				
U. S. of America		SE 1/4 of NW 1/4																																				
State of Minnesota		NE 1/4 of SW 1/4																																				
<i>Earle V. & Pauline Bagenstos</i>		NW 1/4 of SW 1/4					40	70																														
"		SW 1/4 of SW 1/4				Lot 4	30 25	"																														
U. S. of America		SE 1/4 of SW 1/4				Lot 5																																
U. S. of America		NE 1/4 of SE 1/4																																				
State of Minnesota		NW 1/4 of SE 1/4																																				
State of Minnesota		SW 1/4 of SE 1/4																																				
U. S. of America		SE 1/4 of SE 1/4																																				

110 1/2

348 7052 182 7234 7234

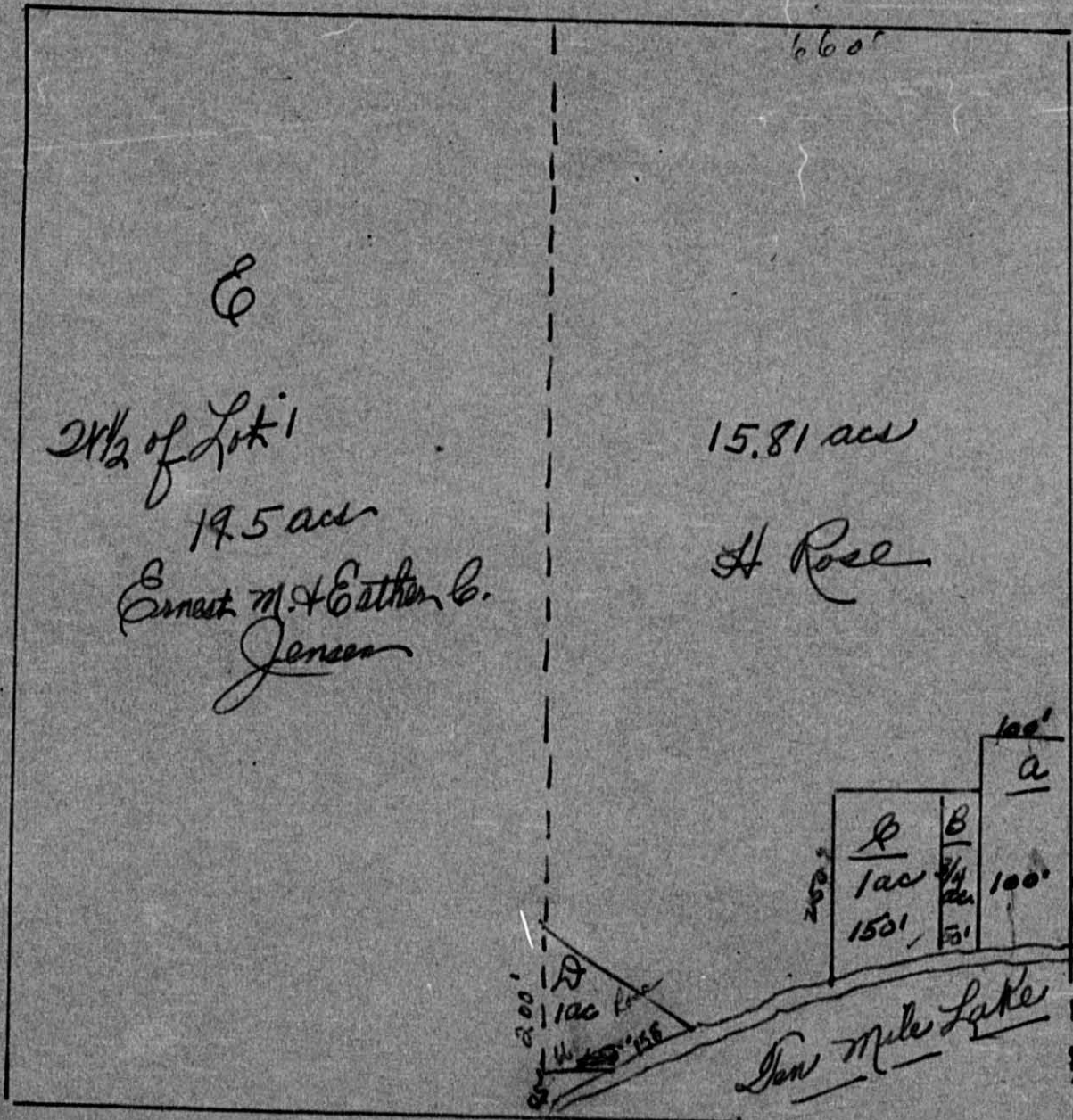
Sunrise
Shinglee Island
Chippewa Point
Kneekona Springs
Jibway
Beach

Assessment Roll and Tax List of Real Property in the Town of Shungbee

Cass County, Minnesota, for Taxes for the Year 1953.

IN WHOSE NAME ASSESSED	TO WHOM TRANSFERRED	DESCRIPTION OF PROPERTY			TRUE AND FULL VALUATIONS									ASSESSED VALUATIONS												VALUATIONS BY SCHOOL DISTRICTS AS EQUALIZED BY DEPARTMENT OF TAXATION															REMARKS
		SUBDIVISION	Sec. or Lot	Town or Block	No. of Acres of Land	Machinery Permanently Attached to Real Estate	Buildings and Other Structures	LAND Exclusive of Structures and Improvements	TOTAL True and Full Value				Machinery Permanently Attached to Real Estate	TOTAL ASSESSED VALUE	Total Assessed Value as Equalized by the Board of Review	FINAL EQUALIZED VALUE	SOLD FOR TAXES	District					Tax including State Homestead	State Tax on Non-Homestead	SPECIAL TAXES	TOTAL TAXES	PAID	WHEN PAID	Number of Receipt	March Settlement 1951	June Settlement 1951	November Settlement 1951	Penalty	Collections to First Monday in January 1955	Penalty	Delinquent on First Monday in January 1955	Total Delinquent Tax and Penalty				
									RURAL		ALL OTHER							District No.	District No.	District No.	District No.	District No.																			
									Homestead Up to \$4,000 20%	Over \$4,000 and Non-Homestead 33 1/3%	Homestead Up to \$4,000 25%	Over \$4,000 and Non-Homestead 40%						Rate	Rate	Rate	Rate	Rate																			
Dollars	Dollars	Dollars	Dollars	Dollars	Dollars	Dollars	Dollars	Dollars	Dollars	Dollars	Dollars	Dollars	Dollars	Dollars	Dollars	\$ cts.	\$ cts.	\$ cts.	\$ cts.	\$ cts.	\$ cts.	\$ cts.	\$ cts.	\$ cts.	\$ cts.	\$ cts.	\$ cts.	\$ cts.	\$ cts.	\$ cts.	\$ cts.	\$ cts.	\$ cts.	\$ cts.							
Henry Rose		NE 1/4 of NE 1/4			34.14131				5490	570						1	90	1636	42	1678	1 PAID IN FULL	MAY 25 1954	7226	1678																	
" "		NW 1/4 of NE 1/4						5221	"							2	86	1564	40	1604	2 PAID IN FULL	MAY 25 1954	7226	1604																	
Ernest M. & Esther C. Jensen		SW 1/4 of NE 1/4						5209	"							3	224	4072	104	4176	3 PAID IN FULL	MAY 18 1954	6135	4176																	
Henry Rose		8 1/2 of SE 1/4 of NE 1/4			Lot 1 less sold			1581	"							4	100	1818	46	1864	4 PAID IN FULL	MAY 25 1954	7226	1864																	
Ernest M. & Esther C. Jensen		8 1/2 of Lot 1 & 25' of 8 1/2' of Lot 1						1950	"							5	208	3780	96	3876	5 PAID IN FULL	MAY 18 1954	6135	3876																	
U. S. of America		NE 1/4 of NW 1/4														6																									
U. S. of America		NW 1/4 of NW 1/4														7																									
U. S. of America		SW 1/4 of NW 1/4														8																									
U. S. of America		SE 1/4 of NW 1/4														9																									
Henry Rose		2.5' x 25' N. of S. E. cor. of 8 1/2' of Lot 1 thence S 200' thence 60' to N. W. 1/4 of Lot 1							70							10	33	600	16	616	10 PAID IN FULL	MAY 25 1954	7226	616																	
U. S. of America		NE 1/4 of SW 1/4														11																									
U. S. of America		NW 1/4 of SW 1/4														12																									
U. S. of America		SW 1/4 of SW 1/4														13																									
U. S. of America		SE 1/4 of SW 1/4														14																									
Elmer L. Johnson		7,300' of Lot 2						1344	70							15	SOLD FOR TAXES	547	9942	254	10196	15 PAID IN FULL	MAY 31 1954	12992	10196																
R. H. Devos		4300' of NW 1/4 of Lot 2						1344	"							16		414	7524	192	7716	16																			
C. Petrus Peterson		7,470' of SE 1/4 of Lot 2						1544	"							17		650	11814	302	12116	17 PAID IN FULL	MAY 31 1954	12989	12116											7716x8488					
Basik E. Shofner		SW 1/4 of SE 1/4 less Plat of Johnston Beach						4154	70							18	H 200	3636		3636	18	2nd Half Paid OCT 20 1954 3915	MAY 24 1954	6978	1818		1818														
		SE 1/4 of SE 1/4														19																									
								299.39								20	H 200 3352 2552	46386	1092	47478	20				37944	1818										7716					

Shungbee Island
Chippewa Point
Kobeck Springs
Bensch



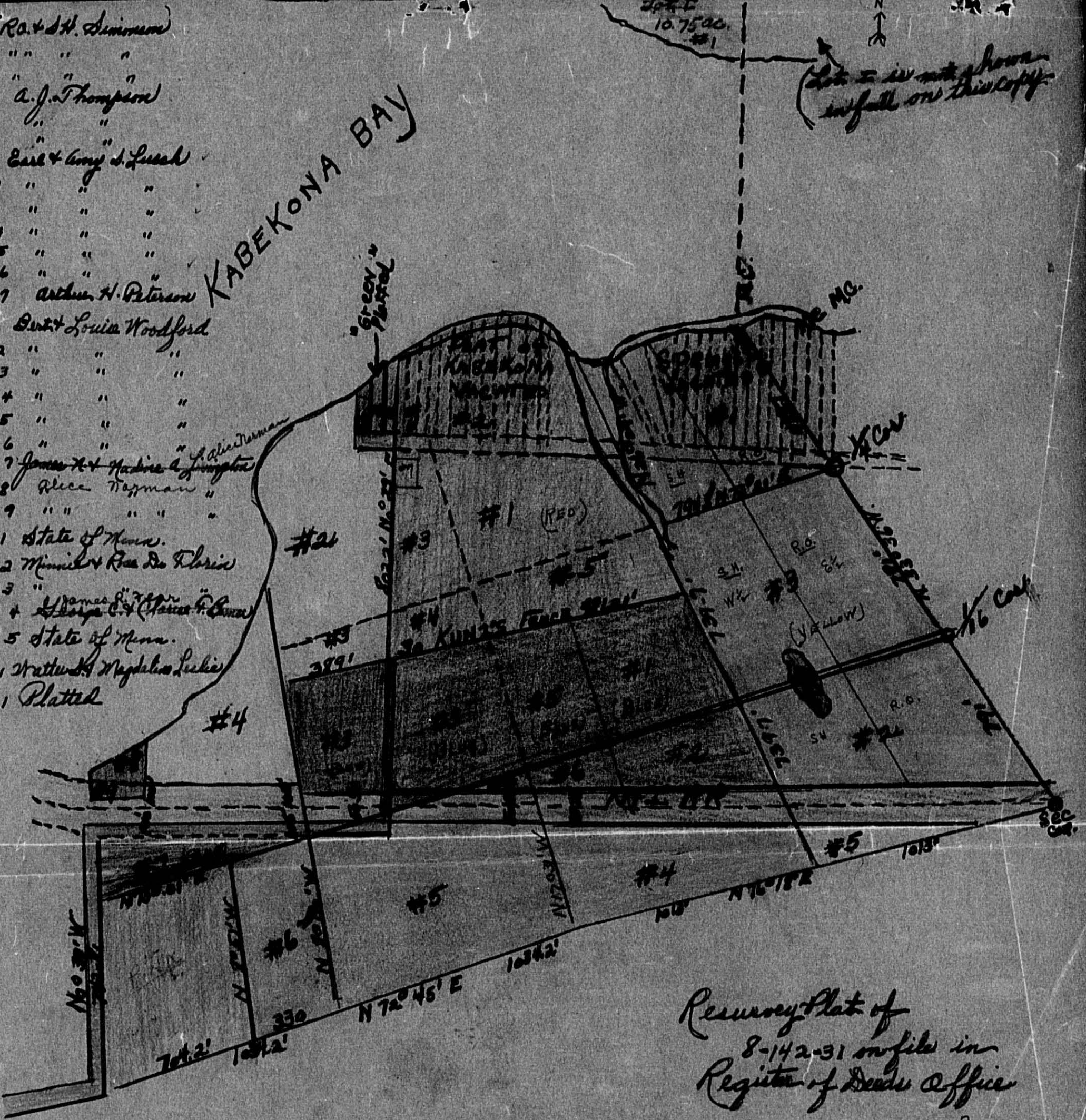
- A - S. Kolderie
- B - " "
- C - Elmer Nordland
- D - Henry Rose
- E - Ernest M. & Esther C. Jensen

Lot 1 Sec. 34 - 141 - 31

Except for distance given
this map is not exact as
we don't know the dis-
tance of lake.

- Yellow #1 Ra. & St. Simon
- " #2 " " " "
- " #3 " " " "
- " #4 A. J. Thompson
- " #5 " " " "
- " #6 " " " "
- Red #1 Carl & Amy S. Lusch
- " #2 " " " "
- " #3 " " " "
- " #4 " " " "
- " #5 " " " "
- " #6 " " " "
- " #7 Arthur H. Peterson
- Blue #1 Bert & Louise Woodford
- " #2 " " " "
- " #3 " " " "
- " #4 " " " "
- " #5 " " " "
- " #6 " " " "
- " #7 James & Madeline S. Jorgensen
- " #8 Alice Norman
- " #9 " " " "
- White #1 State of Minn.
- " #2 Minnie & Rose De Floris
- " #3 " " " "
- " #4 James P. & Mary E. Jones
- " #5 State of Minn.
- Pink #1 Matt & Magdalena Lukic
- Green #1 Platted

KABEKONA BAY



Resurvey Plat of
8-142-31 on file in
Register of Deeds Office

Map OK. 7-23-54
Assessor Peterson & 7 red?
Have to ask Assessor -

(Page 50)

Assessment Roll and Tax List of Real Property in the Town of Shingobee of Shingobee

Cass County, Minnesota, for Taxes for the Year 1953.

142-31

IN WHOSE NAME ASSESSED	TO WHOM TRANSFERRED	DESCRIPTION OF PROPERTY					TRUE AND FULL VALUATIONS						ASSESSED VALUATIONS					FINAL EQUALIZED VALUE
		SUBDIVISION	Sec. or Lot	Town or Block	Rng.	Number of Acres of Land	LAND Exclusive of Structures and Improvements	BUILDINGS and Other Structures	MACHINERY Permanently Attached to Real Estate	TOTAL True and Full Value	RURAL		ALL OTHER		MACHINERY Permanently Attached to Real Estate	TOTAL ASSESSED VALUE	Total Assessed Value as Equalized by the Board of Review	
											Homestead	Over \$4,000 and Non-Homestead	Homestead	Over \$4,000 and Non-Homestead				
											Up to \$4,000 20%	33 1/3%	Up to \$4,000 25%	40%				
Acres		100ths		Dollars		Dollars		Dollars		Dollars		Dollars		Dollars				
		NE 1/4 of NE 1/4		9 142 31														
		NW 1/4 of NE 1/4																
		SW 1/4 of NE 1/4																
		SE 1/4 of NE 1/4																
Sverre Olsen	Carl A. & Louise Miller	Lot 1 less 6.33 acs Hwy.		10 42	70													
		NE 1/4 of NW 1/4 Lot 3		3 50	70													
		NW 1/4 of NW 1/4		11 28 25	70													
Carl A. & Louise Miller		6.5 acs of Lots 3 & 4 SW 1/4 of NW 1/4 roadway		6 50														
		SE 1/4 of NW 1/4																
Carl H. Gleason		Part of Lot 3 & 4		3 00														
		NE 1/4 of SW 1/4																
Alphons C. & Edith T. Brunten		NW 1/4 of SW 1/4		4 0	70													
		SW 1/4 of SW 1/4 less Ry		3 5	70													
Carl A. & Louise Miller		SE 1/4 of SW 1/4 - Lot 4 less rd		11 50	70													
		NE 1/4 of SE 1/4 Lot 2		4 0	70													
		NW 1/4 of SE 1/4																
		SW 1/4 of SE 1/4																
Laurence & Annette Lovegren		SE 1/4 of SE 1/4 Part of Lot 3 & 4 E. of Ry + N. of roadway		20 00	70													

SOLD FOR TAXES	VALUATIONS BY SCHOOL DISTRICTS AS EQUALIZED BY DEPARTMENT OF TAXATION						Tax Including State Homestead	State Tax on Non-Homestead	SPECIAL TAXES	TOTAL TAXES	PAID	WHEN PAID	Number of Receipt	March Settlement 1954	June Settlement 1954	November Settlement 1954	Penalty	Collections to First Monday in January 1955	Penalty	Delinquent on First Monday in January 1955	Total Delinquent Tax and Penalty	REMARKS
	District No.	District No.	District No.	District No.	District No.	District No.																
	Rate	Rate	Rate	Rate	Rate	Rate																
	Mills	Mills	Mills	Mills	Mills	Mills																

Div of Assessment on file 5/29/54

PAID IN FULL MAY 14 1954 6044
2nd Half Paid AUG 23 1954 7806
1st Half Paid MAY 20 1954 6725
Balance Paid MAY 31 1954 13012
PAID MAY 29 1954 6625

Miller share PAID IN FULL
Lovegren share in full

H 180
235
415
H 1700 = 1880
1196 = 1411
2876 = 3291
7542
59464
67006
656
67662

48117 19545

Assessment Roll and Tax List of Real Property in the Down of Shingobee

Cass County, Minnesota, for Taxes for the Year 1953.

Form 500 (53) JULY-1950 EDITION, MINNAPOLIS

142-31

IN WHOSE NAME ASSESSED	TO WHOM TRANSFERRED	DESCRIPTION OF PROPERTY				TRUE AND FULL VALUATIONS				ASSESSED VALUATIONS						FINAL EQUALIZED VALUE		
		SUBDIVISION	Sec. of Lot	Town or Block	Rng.	Number of Acres of Land	LAND Exclusive of Structures and Improvements	BUILDINGS and Other Structures	MACHINERY Permanently Attached to Real Estate	TOTAL True and Full Value	RURAL		ALL OTHER		MACHINERY Permanently Attached to Real Estate		TOTAL ASSESSED VALUE	Total Assessed Value as Equalized by the Board of Review
											Acres	100ths	Homestead Up to \$4,000 20%	Over \$4,000 and Non-Homestead 33 1/3%				
<i>Othel L. Peterson</i>		NE 1/4 of NE 1/4		<i>Lot 1</i>	10 142 31 19													
		NW 1/4 of NE 1/4																
		SW 1/4 of NE 1/4																
		SE 1/4 of NE 1/4																
		NE 1/4 of NW 1/4																
		NW 1/4 of NW 1/4																
		SW 1/4 of NW 1/4																
		SE 1/4 of NW 1/4																
		NE 1/4 of SW 1/4																
		NW 1/4 of SW 1/4																
		SW 1/4 of SW 1/4																
		SE 1/4 of SW 1/4																
		NE 1/4 of SE 1/4																
		NW 1/4 of SE 1/4																
		SW 1/4 of SE 1/4																
		SE 1/4 of SE 1/4																

SOLD FOR TAXES	VALUATIONS BY SCHOOL DISTRICTS AS EQUALIZED BY DEPARTMENT OF TAXATION						Tax including State Homestead	State Tax on Non-Homestead	SPECIAL TAXES	TOTAL TAXES	PAID	WHEN PAID	Number of Receipt	March Settlement 1954	June Settlement 1954	Penalty	November Settlement 1954	Penalty	Collections to First Monday in January 1955	Penalty	Delinquent on First Monday in January 1955	Total Delinquent Tax and Penalty	REMARKS
	District No.	District No.	District No.	District No.	District No.	District No.																	
	Rate	Rate	Rate	Rate	Rate	Rate																	
1																							

Shingobee Island
Chippewa Point
Kabeokna Springs
Ojibway
Beach

Assessment Roll and Tax List of Real Property in the Town of Shingobee

Cass County, Minnesota, for Taxes for the Year 1953.

Form 5(1) (53) WILSON-DAVIS COMPANY, MINNEAPOLIS

IN WHOSE NAME ASSESSED	TO WHOM TRANSFERRED	DESCRIPTION OF PROPERTY				TRUE AND FULL VALUATIONS					ASSESSED VALUATIONS					FINAL EQUALIZED VALUE	
		SUBDIVISION	Sec. or Lot	Town or Block	Rng.	Number of Acres of Land	Machinery Permanently Attached to Real Estate	BUILDINGS and Other Structures	LAND Exclusive of Structures and Improvements	RURAL		ALL OTHER		Machinery Permanently Attached to Real Estate	TOTAL ASSESSED VALUE		Total Assessed Value as Equalized by the Board of Review
										Acres	100ths	Homestead Up to \$4,000 20%	Over \$4,000 and Non-Homestead 33 1/3%				
U. S. of America	<i>in trust for Min. Chippewa Tribe</i>	<i>6 1/2</i> NE 1/4 of NE 1/4	13	142	31												
		NW 1/4 of NE 1/4															
		SW 1/4 of NE 1/4															
		SE 1/4 of NE 1/4															
<i>Faye L. Andrews</i>		NE 1/4 of NW 1/4 <i>Section 1</i>	15	142	31												
		NW 1/4 of NW 1/4															
		SW 1/4 of NW 1/4															
		SE 1/4 of NW 1/4															
		NE 1/4 of SW 1/4															
		NW 1/4 of SW 1/4															
		SW 1/4 of SW 1/4															
		SE 1/4 of SW 1/4															
		NE 1/4 of SE 1/4															
		NW 1/4 of SE 1/4															
		SW 1/4 of SE 1/4															
		SE 1/4 of SE 1/4															

SOLD FOR TAXES	VALUATIONS BY SCHOOL DISTRICTS AS EQUALIZED BY DEPARTMENT OF TAXATION						Tax including State Homestead	State Tax on Non-Homestead	SPECIAL TAXES	TOTAL TAXES	PAID	WHEN PAID	Number of Receipt	March Settlement 1954	June Settlement 1954	Penalty 1954	November Settlement 1954	Penalty 1954	Collections to First Monday in January 1955	Penalty 1955	Delinquent on First Monday in January 1955	Total Delinquent Tax and Penalty	REMARKS
	District No.	District No.	District No.	District No.	District No.	District No.																	
	Rate	Rate	Rate	Rate	Rate	Rate																	
1																							
2																							
3																							
4																							
5																							
6																							
7																							
8																							
9																							
10																							
11																							
12																							
13																							
14																							
15																							
16																							
17																							
18																							
19																							
20																							

148-31

Shingobee Island
Chippewa Point
Kabeokona Springs
Olway
Beach

Assessment Roll and Tax List of Real Property in the *Town* of *Shinglee*

Cass County, Minnesota, for Taxes for the Year 1953.

Form 507 (53) MINN. STATE GOVERNMENT, ST. PAUL, MINN.

IN WHOSE NAME ASSESSED	TO WHOM TRANSFERRED	DESCRIPTION OF PROPERTY				TRUE AND FULL VALUATIONS				ASSESSED VALUATIONS				FINAL EQUALIZED VALUE	SOLD FOR TAXES	VALUATIONS BY SCHOOL DISTRICTS AS EQUALIZED BY DEPARTMENT OF TAXATION						SPECIAL TAXES	TOTAL TAXES	PAID	WHEN PAID	Number of Receipt	March Settlement 1954	June Settlement 1954	November Settlement 1954	Penalty	Collections to First Monday in January 1955	Penalty	Delinquent on First Monday in January 1955	Total Delinquent Tax and Penalty	REMARKS				
		SUBDIVISION	Sec. or Lot	Town or Block	Rng.	Number of Acres of Land	LAND Exclusive of Structures and Improvements	BUILDINGS and Other Structures	MACHINERY Permanently Attached to Real Estate	TOTAL True and Full Value	RURAL		ALL OTHER			MACHINERY Permanently Attached to Real Estate	TOTAL ASSESSED VALUE	Total Assessed Value as Equalized by the Board of Review	District No.	District No.	District No.															District No.	District No.	District No.	
											Acres	100ths	Up to \$4,000 20%						Over \$4,000 and Non-Homestead 33 1/8%	Up to \$4,000 25%	Over \$4,000 and Non-Homestead 40%															33 1/8%	Rate	Rate	Rate
<i>Loretta Hudson Prehn</i>		NE 1/4 of NE 1/4	19	14231		40	570									1	107			1944	50	1994	1 PAID IN FULL MAY 31 1954																
"	"	NW 1/4 of NE 1/4				40	"									2	107			1944	50	1994	2 PAID IN FULL MAY 31 1954	13019	7976														
"	"	SW 1/4 of NE 1/4				40	"									3	107			1944	50	1994	3 PAID IN FULL MAY 31 1954																
"	"	SE 1/4 of NE 1/4				40	"									4	107			1944	50	1994	4 PAID IN FULL MAY 31 1954																
U. S. of America		NE 1/4 of NW 1/4														5																							
State of Minnesota		NW 1/4 of NW 1/4					<i>Lot 1</i>									6																							
U. S. of America		SW 1/4 of NW 1/4					<i>Lot 2</i>									7																							
U. S. of America		SE 1/4 of NW 1/4														8																							
U. S. of America		NE 1/4 of SW 1/4														9																							
U. S. of America		NW 1/4 of SW 1/4					<i>Lot 3</i>									10																							
U. S. of America		SW 1/4 of SW 1/4					<i>Lot 4</i>									11																							
U. S. of America		SE 1/4 of SW 1/4														12																							
U. S. of America		NE 1/4 of SE 1/4														13																							
U. S. of America		NW 1/4 of SE 1/4														14																							
U. S. of America		SW 1/4 of SE 1/4														15																							
U. S. of America		SE 1/4 of SE 1/4														16																							
U. S. of America																17																							
U. S. of America																18																							
U. S. of America																19																							
U. S. of America																20																							

428

7776 200

7976

7976

160

Shinglee Island Chipewm Point Kabokona Springs Ojibway Beach

Assessment Roll and Tax List of Real Property in the Town of Shinglee

Cass County, Minnesota, for Taxes for the Year 1953.

Form 507 (53) MINN. STATE GOVERNMENT, ST. PAUL, MINN.

IN WHOSE NAME ASSESSED	TO WHOM TRANSFERRED	DESCRIPTION OF PROPERTY				TRUE AND FULL VALUATIONS					ASSESSED VALUATIONS					FINAL EQUALIZED VALUE	
		SUBDIVISION	Sec. or Lot	Town or Block	No. of Acres of Land	LAND Exclusive of Structures and Improvements	BUILDINGS and Other Structures	MACHINERY Permanently Attached to Real Estate	TOTAL True and Full Value	RURAL		ALL OTHER		MACHINERY Permanently Attached to Real Estate	TOTAL ASSESSED VALUE		Total Assessed Value as Equalized by the Board of Review
										Homestead Up to \$4,000 20%	Over \$4,000 and Non-Homestead 33 1/3%	Homestead Up to \$4,000 25%	Over \$4,000 and Non-Homestead 40%				
Ed Nold		Lot 2 less platted less 400' x 90' & less 10 rods to road	23 1/2	31	25.20												
Richard J. + Frances M. Kartes		NE 1/4 of NE 1/4 of Lot 2			83												
Theodore Margard		10 rods x 16 rods of lot 2 less platted			100												
Helv D. Olson		10' x 16 rods NW 1/4 of NW 1/4 of Lot 2 less platted			100												
John M. + Mary Meyer Lang		1.8 ac. of Lot 2			180												
		NE 1/4 of SW 1/4															
		NW 1/4 of SW 1/4															
		SW 1/4 of SW 1/4															
		SE 1/4 of SW 1/4															
		NE 1/4 of SE 1/4															
		NW 1/4 of SE 1/4															
		SW 1/4 of SE 1/4															
		SE 1/4 of SE 1/4															

SOLD FOR TAXES	VALUATIONS BY SCHOOL DISTRICTS AS EQUALIZED BY DEPARTMENT OF TAXATION						Tax including State Homestead	State Tax on Non-Homestead	SPECIAL TAXES	TOTAL TAXES	PAID	WHEN PAID	Number of Receipt	March Settlement 1954	June Settlement 1954	November Settlement 1954	Collections to First Monday in January 1955	Delinquent on First Monday in January 1955	Total Delinquent Tax and Penalty	REMARKS
	District No.	District No.	District No.	District No.	District No.	District No.														
	Rate	Rate	Rate	Rate	Rate	Rate														
1						125	2584	58	2642	1	PAID IN FULL	MAY 15 1954	5378		2642					
2										2										
3						7 200	4136		4136	3	PAID IN FULL	JUL 21 1954	11271			4136				paid due 62
4										4										
5						40	828	18	846	5										
6										6										
7						60	1240	28	1268	7	PAID IN FULL	NOV 12 1954	10302							
8										8										
9										9										
10						7 366	7568		7568	10	2nd Half Paid	OCT 21 1954	14245							
11											1st Half Paid	MAY 31 1954	7718		3784					
12										12										
13										13										
14										14										
15										15										
16										16										
17										17										
18										18										
19										19										
20										20										

142-31

Shinglee Island Chipewau Point Katokeona Springs of Hwy Beach

Assessment Roll and Tax List of Real Property in the Town of *Shingobee*

Cass County, Minnesota, for Taxes for the Year 1953.

IN WHOSE NAME ASSESSED	TO WHOM TRANSFERRED	DESCRIPTION OF PROPERTY				TRUE AND FULL VALUATIONS				ASSESSED VALUATIONS						FINAL EQUALIZED VALUE	SOLD FOR TAXES	VALUATIONS BY SCHOOL DISTRICTS AS EQUALIZED BY DEPARTMENT OF TAXATION						TOTAL TAXES	PAID	WHEN PAID	Number of Receipt	March Settlement 1954	June Settlement 1954	November Settlement 1954	Penalty	Collections to First Monday in January 1955	Penalty	Delinquent on First Monday in January 1955	Total Delinquent Tax and Penalty	REMARKS			
		Subdivision	Sec. or Lot	Town or Block	Rng.	Number of Acres of Land	Machinery Permanently Attached to Real Estate	RURAL		ALL OTHER		Machinery Permanently Attached to Real Estate	TOTAL ASSESSED VALUE	VALUATIONS BY SCHOOL DISTRICTS AS EQUALIZED BY DEPARTMENT OF TAXATION																									
								Land Exclusive of Structures and Improvements	BUILDINGS and Other Structures	Homestead Up to \$4,000 20%	Over \$4,000 and Non-Homestead 33 1/3%			Homestead Up to \$4,000 25%	Over \$4,000 and Non-Homestead 40%			District No.	District Rate	District No.	District Rate	District No.	District Rate														Tax including State Homestead	State Tax on Non-Homestead	SPECIAL TAXES
								Dollars	Dollars	Dollars	Dollars			Dollars	Dollars			Dollars	Dollars	Dollars	Dollars	Dollars	Dollars														Dollars	Dollars	Dollars
Russell & Ruby Angel	Herman & Ella Fisher																																						
Henry & Annela Lueke	Herman Fisher																																						
George & Sylvia A. Jessen	J.R. & Amanda Schumley																																						
George A. & Sylvia A. Jessen	Herman Fisher																																						
Anna L. Dallaire	Herman Fisher																																						
L.J. Savard	Donald & Lois L. Stumpf																																						
Fred Fisher	Donald & Lois L. Stumpf																																						
Clarence & Betty Fisher	(continued on next page)																																						

142-51

Shingobee Island

Chippewa Point

Kabeona Springs

Of Otway Beach

Assessment Roll and Tax List of Real Property in the Town of Shinglee

Cass County, Minnesota, for Taxes for the Year 1953.

Table with columns: IN WHOSE NAME ASSESSED, TO WHOM TRANSFERRED, DESCRIPTION OF PROPERTY, TRUE AND FULL VALUATIONS, ASSESSED VALUATIONS, VALUATIONS BY SCHOOL DISTRICTS AS EQUALIZED BY DEPARTMENT OF TAXATION, SOLD FOR TAXES, PAID, WHEN PAID, March Settlement, June Settlement, November Settlement, Collections to First Monday in January 1955, Delinquent on First Monday in January 1955, Total Delinquent Tax and Penalty, REMARKS.

Assessment Roll and Tax List of Real Property in the Town of Shingobee, of Shingobee

Cass County, Minnesota, for Taxes for the Year 1953.

Table with columns for IN WHOSE NAME ASSESSED, TO WHOM TRANSFERRED, DESCRIPTION OF PROPERTY, TRUE AND FULL VALUATIONS, ASSESSED VALUATIONS, VALUATIONS BY SCHOOL DISTRICTS AS EQUALIZED BY DEPARTMENT OF TAXATION, SOLD FOR TAXES, PAID, WHEN PAID, Number of Receipt, March Settlement 1954, June Settlement 1954, November Settlement 1954, Collections to First Monday in January 1955, Delinquent on First Monday in January 1955, Total Delinquent Tax and Penalty, REMARKS.

279 69

710 801 1511

27462 374 27836

8792 12255 5789

Shingobee Island Chippewa Point Kabeokona Springs Oljway Beach

Assessment Roll and Tax List of Real Property in the Town of Shingobee

Form 507 (53) MARCH 1953 EDITION, MINNESOTA

IN WHOSE NAME ASSESSED	TO WHOM TRANSFERRED	DESCRIPTION OF PROPERTY					TRUE AND FULL VALUATIONS				ASSESSED VAL				REMARKS
		SUBDIVISION	Sec. or Lot	Town or Block	Reg.	Number of Acres of Land	LAND Exclusive of Structures and Improvements	BUILDINGS and Other Structures	MACHINERY Permanently Attached to Real Estate	TOTAL True and Full Value	RURAL		ALL OTHER		
					Acres	Dollars	Dollars	Dollars	Dollars	Homestead Up to \$4,000 20%	Over \$4,000 and Non-Homestead 33 1/3%	Homestead Up to \$4,000 25%	Over \$4,000 and Non-Homestead 40%		
		1													
		2													
		3													
		4													
		5													
		6													
		7													
		8													
		9													
		10													
		11													
		12													
		13													
		14													
		15													
		16													
		17													
		18													
		19													
		20													

PAGES

83

THRU

88

BLANK

Cass County, Minnesota, for Taxes for the Year 1953.

State Tax on Non-Homestead Mills	SPECIAL TAXES	TOTAL TAXES	PAID	WHEN PAID	Number of Receipt	March Settlement 1954	June Settlement 1954	Penalty	November Settlement 1954	Penalty	Collections to First Monday in January 1955	Penalty	Delinquent on First Monday in January 1955	Total Delinquent Tax and Penalty	REMARKS
															1
															2
															3
															4
															5
															6
															7
															8
															9
															10
															11
															12
															13
															14
															15
															16
															17
															18
															19
															20

Sunrise Beach Shingobee Island
Chippewa Point
Kabeokna Springs Ojibway Beach

Assessment Roll and Tax List of Real Property in the Town of Dummee, County of Dugoube

Cass County, Minnesota, for Taxes for the Year 1953.

Form 50 (53)

Main table with columns for IN WHOSE NAME ASSESSED, TO WHOM TRANSFERRED, DESCRIPTION OF PROPERTY, TRUE AND FULL VALUATIONS, ASSESSED VALUATIONS, VALUATIONS BY SCHOOL DISTRICTS AS EQUALIZED BY DEPARTMENT OF TAXATION, and TAXES. Includes handwritten entries and numerical data.

Vertical text on the left margin: Dummee, Gitchee Gummee Beach, Chipewa Falls, Spring Springs, Doka Springs

Vertical text on the right margin: Wa-be-ta-ta-r-Bay, Sunrise Heights, Chariton Beach, Buzzy Point, Crescent Beach, Crescent Beach

REMARKS

Summary totals: 1146, 23694, 534, 24228, 2876, 14542, 3468, 3342

Assessment Roll and Tax List of Real Property in the Town of Shingobee, Minnesota

Cass County, Minnesota, for Taxes for the Year 1953.

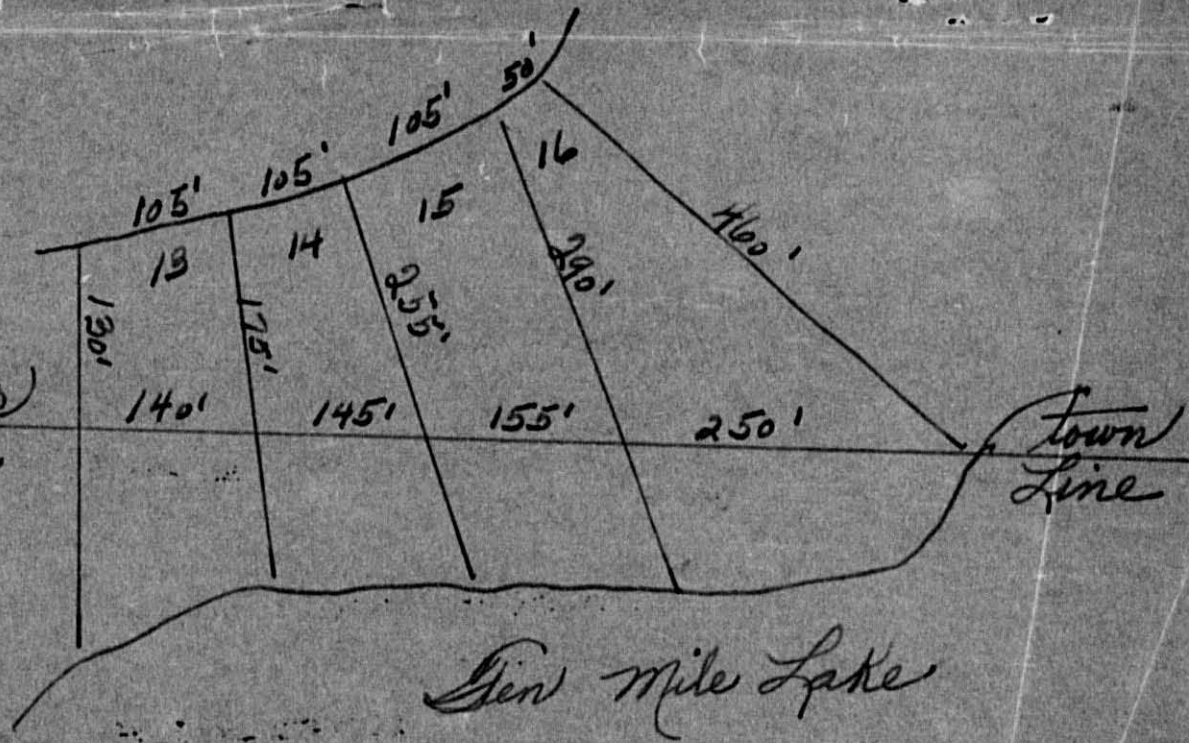
Form 30 (53)

Main table with columns: IN WHOSE NAME ASSESSED, TO WHOM TRANSFERRED, DESCRIPTION OF PROPERTY, TRUE AND FULL VALUATIONS, ASSESSED VALUATIONS, VALUATIONS BY SCHOOL DISTRICTS AS EQUALIZED BY DEPARTMENT OF TAXATION, and various tax and payment columns.

Vertical text on the left margin listing street names: 1st Add'n, Glitchee Gumme Beach, Breezy Point, Crescent Beach, 1st Add'n.

Vertical text on the right margin listing street names: Sunrise Heights, Charlton Beach, Smokey's 1st Add'n to Walker, Belford's 1st Add'n to Shingobee Island.

Shingle Swamp
Dism Swamp



Lots 13-14-15-16

Chariton Beach

Assessment Roll and Tax List of Real Property in the Town of Shingobee

Form 50 (53) MINN. STATE BOARD OF TAXATION

Table with columns: IN WHOSE NAME ASSESSED, TO WHOM TRANSFERRED, SUBDIVISION, Sec. of Lot, Town or Block, Rng., Number of Acres of Land, No. School District, Indicate Homesteaded or No, Indicate Agricultural Use or No, TRUE AND FULL VALUATIONS (LAND, BUILDINGS, MACHINERY, TOTAL), ASSESSED VALUATIONS (RURAL, ALL OTHER, MACHINERY, TOTAL ASSESSED VALUE), Total Assessed Value as Equalized by the Board of Review, FINAL EQUALIZED VALUE.

Handwritten entries in the first two columns: Norman James Iverson, Anna C. Dallaire, George A. & Sylvia W. Jensen, Anna C. Dallaire, Vera J. & Lillian M. Hansier, Anna C. Dallaire, Grand C. & Rose E. Stolte, Anna C. Dallaire, Herman A. & Ella Fisher, G.M. & Daisy Gemberling, Anna C. Dallaire.

Cass County, Minnesota, for Taxes for the Year 1953.

Table with columns: SOLD FOR TAXES, VALUATIONS BY SCHOOL DISTRICTS AS EQUALIZED BY DEPARTMENT OF TAXATION (District No., Rate, Mills), Tax including State Homestead, State Tax on Non-Homestead, SPECIAL TAXES, TOTAL TAXES, PAID, WHEN PAID (Month, Day, Year), Number of Receipt, March Settlement 1954, June Settlement 1954, November Settlement 1954, Collections to First Monday in January 1955, Delinquent on First Monday in January 1955, Total Delinquent Tax and Penalty, REMARKS.

Handwritten entries in the tax table: 1 218 218 1 PAID IN FULL FEB 27 1954 2559 218, 2 72 72 2 PAID IN FULL MAY 22 1954 6960 72, 3 218 218 3 PAID IN FULL FEB 27 1954 2559 218, 4 218 218 4 PAID IN FULL FEB 27 1954 218, 5 1164 1164 5 PAID IN FULL APR 20 1954 5144 1164, 6 110 110 6 2nd Half Paid OCT 30 1954 1st Half Paid MAY 28 1954, 7 110 110 7 2nd Half Paid OCT 30 1954 1st Half Paid MAY 28 1954, 8 110 110 8 2nd Half Paid OCT 30 1954 1st Half Paid MAY 28 1954 7148 2238 2238, 9 110 110 9 2nd Half Paid OCT 30 1954 1st Half Paid MAY 28 1954 14724, 10 4036 4036 10 2nd Half Paid OCT 30 1954 1st Half Paid MAY 28 1954, 12 308 08 316 12 PAID IN FULL MAY 31 1954 13056 632, 13 308 08 316 13 PAID IN FULL MAY 31 1954 2nd Half Paid OCT 30 1954 14724, 14 182 182 14 1st Half Paid MAY 28 1954 7148 91 91, 15 308 08 316 15 2nd Half Paid OCT 22 1954 14008 1st Half Paid MAY 28 1954 13232 158 158, 16 5726 5726 16 PAID IN FULL MAY 21 1954 6675 2nd Half Paid OCT 30 1954 14724 5726, 17 182 182 17 1st Half Paid MAY 28 1954 7148 91 91, Summary: 13380 24 13404 654 10172 2578

Vertical text on the left margin: Sunrise Heights, Chariton Beach, Charley's Addition, Crescent Beach, 1st Add'n.

Vertical text on the right margin: Belford's 1st Add'n to Shingobee Twp.

Assessment Roll and Tax List of Real Property in the Town of Shingobee

Cass County, Minnesota, for Taxes for the Year 1953.

Form 50 (53) MILLER-BAY COMPANY, MINNEAPOLIS

IN WHOSE NAME ASSESSED	TO WHOM TRANSFERRED	DESCRIPTION OF PROPERTY				No. School District	Indicate Home-Stead or No.	Indicate Agricultural or No.	TRUE AND FULL VALUATIONS			ASSESSED VALUATIONS				Total Assessed Value as Equalized by the Board of Review	FINAL EQUALIZED VALUE			
		Subdivision	Sec. of Lot	Town or Block	No. of Acres of Land				LAND Exclusive of Structures and Improvements	BUILDINGS and Other Structures	MACHINERY Permanently Attached to Real Estate	TOTAL True and Full Value	RURAL		ALL OTHER			MACHINERY Permanently Attached to Real Estate 33 1/8%	TOTAL ASSESSED VALUE	
													Homestead Up to \$4,000 20%	Over \$4,000 and Non-Homestead 33 1/8%	Homestead Up to \$4,000 25%					Over \$4,000 and Non-Homestead 40%
								Dollars	Dollars	Dollars	Dollars	Dollars	Dollars	Dollars	Dollars	Dollars	Dollars			
			Acres	100ths																

Belford's 1st Adm to Shingobee Island (Part of Lot 5, Sec 2-141-31)

M. A. Grace Handt

Harold H. & Amelia F. Tullman

Katherine R. & Katherine D. Belford

5 No
7
"
"
"

SOLD FOR TAXES	VALUATIONS BY SCHOOL DISTRICTS AS EQUALIZED BY DEPARTMENT OF TAXATION						Tax including State Homestead	State Tax on Non-Homestead 4.66 Mills	SPECIAL TAXES	TOTAL TAXES	PAID	WHEN PAID	Number of Receipt	March Settlement 1954	June Settlement 1954	November Settlement 1954	Penalty	Collections to First Monday in January 1955	Penalty	Delinquent on First Monday in January 1955	Total Delinquent Tax and Penalty	REMARKS	
	District No. Rate	District No. Rate	District No. Rate	District No. Rate	District No. Rate	District No. Rate																	
	Dollars	Dollars	Dollars	Dollars	Dollars	Dollars																	
1																							
1						116		2398	54	2452	1st Half Paid	OCT 21 1954	4233										
2						70		1448		1448	2nd Half Paid	OCT 21 1954	7432	1850		1850				200	2.00 undercollected		
3						217		4486		4486	1st Half Paid	MAY 31 1954	6655										
4						25		516		516	2nd Half Paid	MAY 20 1954	6655	2243		2243							
5						90		1860		1860	PAID IN FULL	MAY 19 1954	6625	516		516							
5											PAID IN FULL	MAY 19 1954	6625	1860		1860							

H 402
116
516
10708 54 10762

6469 4093

2.00

Assessment Roll and Tax List of Real Property in the Dawn of Shingobee,

Cass County, Minnesota, for Taxes for the Year 1953.

Point
Sunrise Heights
Chariton Beach
Cregent Beach
Belford's 1st ADDN
To Shingobee Island

IN WHOSE NAME ASSESSED	TO WHOM TRANSFERRED	DESCRIPTION OF PROPERTY			TRUE AND FULL VALUATIONS										FINAL EQUALIZED VALUE	SOLD FOR TAXES	VALUATIONS BY SCHOOL DISTRICTS AS EQUALIZED BY DEPARTMENT OF TAXATION						PAID	WHEN PAID	Number of Receipt	March Settlement 1954	June Settlement 1954	November Settlement 1954	Penalty	Collections to First Monday in January 1955	Penalty	Delinquent on First Monday in January 1955	Total Delinquent Tax and Penalty	REMARKS								
					ASSESSED VALUATIONS				RURAL		ALL OTHER		MACHINERY Permanently Attached to Real Estate	TOTAL ASSESSED VALUE			Total Assessed Value as Equalized by the Board of Review	District No.	District Rate	District No.	District Rate	District No.													District Rate	District No.	District Rate					
		LAND Exclusive of Structures and Improvements	BUILDINGS and Other Structures	MACHINERY Permanently Attached to Real Estate	TOTAL True and Full Value	Homestead Up to \$4,000 20%	Over \$4,000 and Non-Homestead 33 1/3%	Homestead Up to \$4,000 25%	Over \$4,000 and Non-Homestead 40%	Dollars	Dollars	Dollars																										Dollars	Dollars	Dollars	Dollars	Dollars
		<i>Subdivision</i>	Sec. of Lot	Town or Block	Ring.	Number of Acres of Land																																				
		<i>Start Point</i>																																								
<i>Al. Hook, Glen Witham & G. E. Kerpeter</i>	<i>Outlot a</i>																																									
<i>"</i>	<i>"</i>																																									
<i>"</i>	<i>"</i>																																									
<i>"</i>	<i>"</i>																																									
<i>"</i>	<i>"</i>																																									

60 1088 24 1112

Assessment Roll and Tax List of Real Property in the *Town* of *Shingobee*

Cass County, Minnesota, for Taxes for the Year 1953.

Form SC (53) JULY 1950 REVISED, MINNAPOLIS

IN WHOSE NAME ASSESSED	TO WHOM TRANSFERRED	DESCRIPTION OF PROPERTY			No. School District		TRUE AND FULL VALUATIONS		ASSESSED VALUATIONS					FINAL EQUALIZED VALUE Dollars	SOLD FOR TAXES	VALUATIONS BY SCHOOL DISTRICTS AS EQUALIZED BY DEPARTMENT OF TAXATION						PAID	WHEN PAID Month Day Year	Number of Receipt	March Settlement 1954	June Settlement 1954	November Settlement 1954	Penalty	Collections to First Monday in January 1955	Penalty	Delinquent on First Monday in January 1955	Total Delinquent Tax and Penalty	REMARKS														
							LAND Exclusive of Structures and Improvements Dollars	BUILDINGS and Other Structures Dollars	MACHINERY Permanently Attached to Real Estate Dollars	TOTAL True and Full Value Dollars	RURAL		ALL OTHER			MACHINERY Permanently Attached to Real Estate Dollars	TOTAL ASSESSED VALUE Dollars	Total Assessed Value as Equalized by the Board of Review Dollars	District No.	District No.	District No.													District No.	District No.	District No.	Tax including State Homestead Mills	State Tax on Non-Homestead Mills	SPECIAL TAXES \$ cts.	TOTAL TAXES \$ cts.							
											Homestead Up to \$4,000 20%	Over \$4,000 and Non-Homestead 33 1/3%	Homestead Up to \$4,000 25%																												Over \$4,000 and Non-Homestead 40%	\$	cts.	\$	cts.	\$	cts.
											Dollars		Dollars																												Dollars	Dollars	Dollars	Dollars			
John H. & Sophia Hanson		<i>Lot 3 Subdiv 16-170-34</i>	1											1																																	
"	"	"	2											2																																	
"	"	"	3											3																																	
"	"	"	4											4																																	
Nery Van de Riet			5											5																																	
Nery Van de Riet			6											6																																	
John H. & Sophia Hanson			7											7																																	
"	"		8											8																																	
"	"		9											9																																	
"	"		10											10																																	
"	"		11											11																																	
"	"		12											12																																	
"	"		13											13																																	
"	"		14											14																																	
"	"		15											15																																	
"	"		16											16																																	
"	"		17											17																																	
"	"		18											18																																	
"	"		19											19																																	
"	"		20											20																																	

Sunrise Heights
Chariton Beach
Crescent Beach
Belford's 1st Addn
To Shingobee Island
Smokey's Addition
Walt

PERSONAL