

ASSESSMENT & TAX LIST

Shingobee

1944

Assessor's Return of Exempt Real Property in the _____ of _____ County of _____, Minnesota, for the Year 1944

NAMES OF OWNERS	SUBDIVISION	Sec. or Lot	Town or Block	Range	No. of Acres		FOR WHAT PURPOSE USED	ASSESSOR'S VALUATIONS				REMARKS	
					Acres	100ths		True and Full Value of Lands Exclusive of Structures and Improvements Dollars	STRUCTURES AND IMPROVEMENTS		Total True and Full Value of Lands including all Structures, Improvements and Machinery Dollars		Assessed Value of Lands including all Structures, Improvements and Machinery Dollars
									True and Full Value of Buildings and other Structures Dollars	True and Full Value of Machinery Permanently attached to Real Estate Dollars			
Shingler Prof	N.E. NW 1/4	28	142	31	39	50	Down Hall and grounds	200	3000	3200	1067		
State of Minn.	SE 1/4	34	142	31			Penal Conv	2400	3000	5400	1800		
	S 1/2 NE 1/4	"	"	"				1200		1200	400		
	S 1/2 NW 1/4	35	"	"				1200		1200	400		
	S.W. 1/4	"	"	"			State Sanitarium	2400	6782 1/3	6810 1/3	22700 5		
	Lots 2-3-4	"	"	"				2700		2700	900		
Village of Walker	Lt 6	2	142	31				600		600	200		
	5 acres S.E. 1/4 S.E. 1/4	21	142	31			Cemetery	300		300	100		

695,615 231,872

Assessor's Return of Exe

FORM 2 MILLER-DAVIS COMPANY, MINNEAPOLIS

NAMES OF OWNERS

Treasurer's Office, Cass County, Minnesota

RECEIVED this, the first Monday (being the 2nd day) of January,
 A. D. 1945, of L. C. Peterson, Auditor of said County, Minnesota,
 the Tax List of all Taxable Real and Personal Property in the Town
 of Shingobe in said County for the year A. D. 1944,
 as specified above and amounting to _____ Dollars

 County Treasurer.

Office of County Treasurer, Cass County, Minnesota

Jan. 7, 1946
 To L. C. Peterson, County Auditor:
 Sir: I herewith return to you the Tax List for the Town
 of Shingobe in said County for the year 1944, heretofore
 received from you. I certify that I have compared the same with the duplicate receipts in
 your office, and have written opposite the amount of each tax so receipted the words "First
 Quarter Paid", "Second Quarter Paid", "Third Quarter Paid" or "Paid in full" as the
 case may be, and the number of my receipt given in discharge of said tax, and each tract
 or lot of real property against which the taxes remain unpaid is delinquent for said year.
 Yours respectfully,
Paul A. Jewell
 County Treasurer.

Auditor's Office, Cass County, Minnesota

I, _____ Auditor of said County, and State
 of Minnesota, do hereby certify that the following is a correct list of the Taxes levied on the
 Real and Personal Property in the _____ of _____
 for the year 1944.
 WITNESS my hand and official seal, the _____ day of _____
 1945.

 County Auditor.

Auditor's Office, Cass County, Minnesota

_____ 194_____
 I hereby certify that on the first Monday in January 1946, I received of _____
 _____ County Treasurer, the Tax List of the
 _____ of _____ in said
 County for the year 1944; that I have compared the said list with the Statements receipted
 for by said Treasurer, which are on file in my office, and that each tract or lot of real
 property therein against which the taxes, or any part thereof, remains unpaid are delin-
 quent for said year.

 County Auditor.

Assessor's Return of Ex

COLLECTIONS OF TAXES OF 1944, *Town* OF *Shingobee*, CASS COUNTY, MINNESOTA

FORM 2 - MILLER-DAVIS COMPANY, MINNEAPOLIS

FUNDS	MARCH SETTLEMENT 1944	JUNE SETTLEMENT 1945	NOV. SETTLEMENT 1945	Amount Collected from Nov. 19..... to First Monday in Jan. 19.....	REDUCTIONS	Total Reductions and Collected	BALANCE UNCOLLECTED	ADDITIONS	Total Uncollected to First Monday in January, 19.....
State Revenue, State School, Teachers Insurance, State Debt—Non-Homestead, State Debt—Homestead,	2443 1771	8891 6907	3535 2681						
County Revenue, County Road and Bridge, County Welfare, County Bond and Interest,	24860 7152 39731 22476	96948 27889 154946 87652	37633 10826 60144 34024						
Town Revenue, Town Road and Bridge, Town Drag, Town State Loan, <i>Comp. field. Com.</i>	2270 11352 1135 2838 2838 1135	8854 44269 4427 11067 11067 4427	3437 17184 1718 4296 4296 1718						
School Local 1 Mill, School Special, School State Loan, <i>Comp. field. Def. 1943</i>	1136 37009 1703 3405 9762	4427 111720 6641 13280 38071	1719 39240 2578 5155 14778						
	173016	641477	244962						

NAMES OF OWNERS

	SCHOOL DISTRICT NO.	LOCAL 1 MILL	SPECIAL	STATE LOAN	Deficiency	C.O.	Def. 1943	TOTALS
MARCH SETTLEMENT	School District No. 5	1136	37009		1703	3405	9762	53015
	Totals	1136	37009		1703	3405	9762	53015
JUNE SETTLEMENT	School District No. 5	4427	111720		6641	13280	38071	174139
	Totals	4427	111720		6641	13280	38071	174139
NOVEMBER SETTLEMENT	School District No. 5	1719	39240		2578	5155	14778	63470
	Totals	1719	39240		2578	5155	14778	63470
NOVEMBER to JANUARY	School District No.							
	Totals							
ADDITIONS	School District No.							
	Totals							
REDUCTIONS	School District No.							
	Totals							

Assessment Roll and Tax List of Unplatted Real Property in the of Cass County, Minnesota, for Taxes for the Year 1944.

Form 4 CD MILLER-DAVIS COMPANY, MINNEAPOLIS

Table with columns: IN WHOSE NAME ASSESSED, TO WHOM TRANSFERRED, DESCRIPTION OF PROPERTY, ASSESSOR'S VALUATION, EQUALIZED VALUES, VALUATIONS BY SCHOOL DISTRICTS AS EQUALIZED BY DEPARTMENT OF TAXATION, Rate and Tax Less Homestead Exemption, State Tax on Non-Homestead, TOTAL GENERAL TAX, SPECIAL TAXES, TOTAL TAXES, PAID, WHEN PAID, Number of Receipt, March Settlement 1945, June Settlement 1945, Penalty, November Settlement 1945, Penalty, Collections to First Monday in January 1946, Penalty, Delinquent on First Monday in January 1946, Total Delinquent Tax and Penalty, REMARKS.

141-51

Nola E. Waddell + Betty J. Waddell Ernest + Florence Richardson

Hazel Elliott + Ralph A. + Hazel Elliott Ali Girardier

Thomas E. + Eugene Severs Ernest Miller

J. D. + Mabel M. Meyer + Mabel L. Mitchell W. J. Becker

Manuel + Elizabeth G. de Lury Ali Girardier

Otto Ringle Jessie Bloom

Ruth J. Miller (Court foreclosed to AC Foreman + Nettie Foreman)

11.32 Abated

TOTAL 372.96

TOTAL 1184 1776

Assessment Roll and Tax List of Unplatted Real Property in the _____ of _____, Unplatted Real Estate Assessed at 33 1/3 Per Cent of True and Full Value; Attached Machinery at 33 1/3 Per Cent of True and Full Value, Homesteads, up to True and Full Value of \$4000, Assessable at 20 per Cent, Class 3B; Remainder at 33 1/3 Per Cent, Class 3.

Form 4 CD WALKER-DAY COMPANY, MINNEAPOLIS

Table with columns: IN WHOSE NAME ASSESSED, TO WHOM TRANSFERRED, DESCRIPTION OF PROPERTY, ASSESSOR'S VALUATION, EQUALIZED VALUES, VALUATIONS BY SCHOOL DISTRICTS AS EQUALIZED BY DEPARTMENT OF TAXATION, Rate and Tax Less Homestead Exemption, State Tax on Non-Homestead, TOTAL GENERAL TAX, SPECIAL TAXES, PAID, WHEN PAID, Number of Receipt, March Settlement 1945, June Settlement 1945, Penalty, November Settlement 1945, Penalty, Collections to First Monday in January 1946, Penalty, Delinquent on First Monday in January 1946, Total Delinquent Tax and Penalty, REMARKS.

Assessment Roll and Tax List of Unplatted Real Property in the _____ of _____, Unplatted Real Estate Assessed at 33 1/2 Per Cent of True and Full Value; Attached Machinery at 33 1/2 Per Cent of True and Full Value, Homesteads, up to True and Full Value of \$4000, Assessable at 20 per Cent, Class 3B; Remainder at 33 1/2 Per Cent, Class 3.

Form 4 CD WALKER-BAYNE COMPANY, MINNEAPOLIS

Table with columns: IN WHOSE NAME ASSESSED, TO WHOM TRANSFERRED, DESCRIPTION OF PROPERTY, ASSESSOR'S VALUATION, EQUALIZED VALUES, SOLD FOR TAXES. Includes handwritten entries for J.G. Andrews Jr., Gust Peters, and Olivia Peters.

Cass County, Minnesota, for Taxes for the Year 1944.

Table with columns: VALUATIONS BY SCHOOL DISTRICTS AS EQUALIZED BY DEPARTMENT OF TAXATION, Rate and Tax Less Homestead Exemption, State Tax on Non-Homestead, TOTAL GENERAL TAX, SPECIAL TAXES, PAID, WHEN PAID, Number of Receipt, March Settlement 1945, June Settlement 1945, Penalty, November Settlement 1945, Penalty, Collections to First Monday in January 1946, Penalty, Delinquent on First Monday in January 1946, Total Delinquent Tax and Penalty, REMARKS. Includes handwritten entries for abatements and payments.

Assessment Roll and Tax List of Unplatted Real Property in the of Unplatted Real Estate Assessed at 33 1/3 Per Cent of True and Full Value; Attached Machinery at 33 1/3 Per Cent of True and Full Value, Homesteads, up to True and Full Value of \$4000, Assessable at 20 per Cent, Class 3B; Remainder at 33 1/3 Per Cent, Class 3.

Form 4 C.D. MILLER-DAVIS COMPANY, MINNEAPOLIS

Cass County, Minnesota, for Taxes for the Year 1944.

Table with columns: IN WHOSE NAME ASSESSED, TO WHOM TRANSFERRED, DESCRIPTION OF PROPERTY, ASSESSOR'S VALUATION, EQUALIZED VALUES, VALUATIONS BY SCHOOL DISTRICTS AS EQUALIZED BY DEPARTMENT OF TAXATION, Rate and Tax Less Homestead Exemption, State Tax on Non-Homestead, TOTAL GENERAL TAX, SPECIAL TAXES, PAID, WHEN PAID, Number of Receipt, March Settlement 1945, June Settlement 1945, Penalty, November Settlement 1945, Penalty, Collections to First Monday in January 1946, Penalty, Delinquent on First Monday in January 1946, Total Delinquent Tax and Penalty, REMARKS.

Assessment Roll and Tax List of Unplatted Real Property in the _____ of _____, Minnesota, for Taxes for the Year 1944.

Cass County, Minnesota, for Taxes for the Year 1944.

Table with columns: IN WHOSE NAME ASSESSED, TO WHOM TRANSFERRED, DESCRIPTION OF PROPERTY, ASSESSOR'S VALUATION, EQUALIZED VALUES, VALUATIONS BY SCHOOL DISTRICTS AS EQUALIZED BY DEPARTMENT OF TAXATION, SPECIAL TAXES, TOTAL TAXES, PAID, WHEN PAID, Number of Receipt, March Settlement 1945, June Settlement 1945, November Settlement 1945, Collections to First Monday in January 1946, Delinquent on First Monday in January 1946, Total Delinquent Tax and Penalty, REMARKS.

Assessment Roll and Tax List of Unplatted Real Property in the _____ of _____
 Unplatted Real Estate Assessed at 33 1/3 Per Cent of True and Full Value; Attached Machinery at 33 1/3 Per Cent of True and Full Value, Homesteads, up to True and Full Value of \$4000, Assessable at 20 per Cent, Class 3B; Remainder at 33 1/3 Per Cent, Class 3.

IN WHOSE NAME ASSESSED	TO WHOM TRANSFERRED	DESCRIPTION OF PROPERTY				No. School District	Indicate Homestead Yes or No	ASSESSOR'S VALUATION					EQUALIZED VALUES			SOLD FOR TAXES			
		SUBDIVISION	Sec. or Lot	Town or Block	Range			Number of Acres of Land	True and Full Value of Land Exclusive of Structures and Improvements	STRUCTURES & IMPROVEMENTS		Total True and Full Value of Land Including all Structures, Improvements and Machinery	Assessed Value of Homesteads up to \$4,000 at 20 per cent Class 3B	Assessed Value of Remainder at 33 1/3 per cent Class 3	Total Assessed Value of Land Including all Structures, Improvements and Machinery		Total Assessed Value as Equalized by the Board of Review	Total Assessed Value as Equalized by the County Board	Total Assessed Value as Equalized by the Department of Taxation
										True and Full Value of Buildings and Other Structures	True and Full Value of Machinery Permanently Attached to Real Estate								
Just Peters		NE 1/4 of NE 1/4	10	141	31	40	No	296	282	296	321	99	107	107	94				
"		NW 1/4 of NE 1/4				40	No	296	282	296	321	99	107	107	94				
"		SW 1/4 of NE 1/4				40	No	296	282	296	321	99	107	107	94				
"		SE 1/4 of NE 1/4				40	No	296	282	296	321	99	107	107	94				
J. E. Lundberg & J. E. Lundberg	J. E. Lundberg & J. E. Lundberg	NE 1/4 of NW 1/4				40	No	296	282	296	321	99	107	107	94				
"	"	NW 1/4 of NW 1/4				40	No	296	282	296	321	99	107	107	94				
U. S. of America		SW 1/4 of NW 1/4																	
U. S. of America		SE 1/4 of NW 1/4																	
Hilda Lenora Bissell		NE 1/4 of SW 1/4				15	No	111	106	111	120	34	40	40	35				
U. S. of America		NW 1/4 of SW 1/4																	
U. S. of America		SW 1/4 of SW 1/4																	
U. S. of America		SE 1/4 of SW 1/4																	
U. S. of America		NE 1/4 of SE 1/4																	
U. S. of America		NW 1/4 of SE 1/4																	
U. S. of America		SW 1/4 of SE 1/4																	
U. S. of America		SE 1/4 of SE 1/4																	
						255	2046	2046	682	682	599								
						47-00	1800	1798	599	688	688								

Cass County, Minnesota, for Taxes for the Year 1944.

District No.	District No.	District No.	District No.	Rate and Tax Less Homestead Exemption	State Tax on Non-Homestead	TOTAL GENERAL TAX	SPECIAL TAXES					TOTAL TAXES	PAID	WHEN PAID	Number of Receipt	March Settlement 1945	June Settlement 1945	Penalty	November Settlement 1945	Penalty	Collections to First Monday in January 1946	Penalty	Delinquent on First Monday in January 1946	Total Delinquent Tax and Penalty	REMARKS	
							VALUATIONS BY SCHOOL DISTRICTS AS EQUALIZED BY DEPARTMENT OF TAXATION		SPECIAL TAXES																	
							Dollars	Dollars	Dollars	Dollars	Dollars															Dollars
1	56	99	99	770	16	1362	Abatement #2684					786	2nd Half Paid	OCT - 5 1945											6.06 Abated	
2	56	99	99	770	16	1362						1392	1st Half Paid	SEP 5 1945												6.06 "
3	56	99	99	770	16	1362						786	2nd Half Paid	OCT - 5 1945												6.06 "
4	56	99	99	770	16	1362						786	1st Half Paid	SEP 5 1945												6.06 "
6	99			1362	30	1392						1392	2nd Half Paid	OCT 17 1945												
7	99			1362	30	1392						1392	1st Half Paid	JUN 27 1945												
10	34			469	10	479						479	PAID IN FULL	NOV 27 1945	12023											Pl. R#78950 26 & penalty due
20	114	628		8640	190	8830																				

Cass County, Minnesota, for Taxes for the Year 1944.

Assessment Roll and Tax List of Unplatted Real Property in the of Unplatted Real Estate Assessed at 33 1/3 Per Cent of True and Full Value; Attached Machinery at 33 1/3 Per Cent of True and Full Value, Homesteads, up to True and Full Value of \$4000, Assessable at 20 per Cent, Class 3B; Remainder at 33 1/3 Per Cent, Class 3.

Table with columns: IN WHOSE NAME ASSESSED, TO WHOM TRANSFERRED, DESCRIPTION OF PROPERTY, ASSESSOR'S VALUATION, EQUALIZED VALUES, and SOLD FOR TAXES. Includes handwritten entries for various property owners like 'State of Minnesota' and 'Holly Cummings'.

Table with columns: VALUATIONS BY SCHOOL DISTRICTS AS EQUALIZED BY DEPARTMENT OF TAXATION, Rate and Tax Less Homestead Exemption, State Tax on Non-Homestead, TOTAL GENERAL TAX, SPECIAL TAXES, TOTAL TAXES, PAID, WHEN PAID, Number of Receipt, March Settlement 1945, June Settlement 1945, Penalty, November Settlement 1945, Penalty, Collections to First Monday in January 1946, Penalty, Delinquent on First Monday in January 1946, Total Delinquent Tax and Penalty, and REMARKS. Includes handwritten notes like 'PAID IN FULL' and 'AUDITOR'S RECEIPTS'.

Cass County, Minnesota, for Taxes for the Year 1944.

Assessment Roll and Tax List of Unplatted Real Property in the of Unplatted Real Estate Assessed at 33 1/2 Per Cent of True and Full Value; Attached Machinery at 33 1/2 Per Cent of True and Full Value, Homesteads, up to True and Full Value of \$4000, Assessable at 20 per Cent, Class 3B; Remainder at 33 1/2 Per Cent, Class 3.

Table with columns: IN WHOSE NAME ASSESSED, TO WHOM TRANSFERRED, SUBDIVISION, ASSESSOR'S VALUATION, EQUALIZED VALUES, SOLD FOR TAXES. Includes handwritten entries for W.A. Quorack, F.J. John, Barbara Ford, Melvin S. Willard, State of Minnesota, Olaf Norby, Mrs. Bernard Eckman, Bernard Eckman, Seward Cand, Joan Jean & Bernice Christie, Mrs. Nellie Wright, Alice Marie Olds, Alvin Kubs, Sam Deegmiller, and Bessie J. Woodward.

Table with columns: VALUATIONS BY SCHOOL DISTRICTS AS EQUALIZED BY DEPARTMENT OF TAXATION, Rate and Tax Less Homestead Exemption, State Tax on Non-Homestead, TOTAL GENERAL TAX, SPECIAL TAXES, TOTAL TAXES, PAID, WHEN PAID, Number of Receipt, March Settlement 1945, June Settlement 1945, Penalty, November Settlement 1945, Penalty, Collections to First Monday in January 1946, Delinquent on First Monday in January 1946, Total Delinquent Tax and Penalty, REMARKS. Includes handwritten notes on payments and penalties.

Assessment Roll and Tax List of Unplatted Real Property in the _____ of _____, Unplatted Real Estate Assessed at 33 1/3 Per Cent of True and Full Value; Attached Machinery at 33 1/3 Per Cent of True and Full Value, Homesteads, up to True and Full Value of \$4000, Assessable at 20 per Cent, Class 3B; Remainder at 33 1/3 Per Cent, Class 3.

Form 4 CD WALKER-DAY COMPANY, MINNEAPOLIS

IN WHOSE NAME ASSESSED

TO WHOM TRANSFERRED

DESCRIPTION OF PROPERTY

Sec. or Lot, Town or Block, Range, Number of Acres of Land, Acres, 100ths

No. School District

Indicate Homestead Yes or No

True and Full Value of Land

STRICTURES & IMPROVEMENTS

True and Full Value of Buildings and Other Structures

True and Full Value of Machinery Permanently Attached to Real Estate

Total True and Full Value of Land Including all Structures, Improvements and Machinery

Assessed Value of Homesteads up to \$4,000 at 20 per cent Class 3B

Assessed Value of Remainder at 33 1/3 per cent Class 3

Total Assessed Value of Land Including all Structures, Improvements and Machinery

Total Assessed Value as Equalized by the Board of Review

Total Assessed Value as Equalized by the County Board

Total Assessed Value as Equalized by the Department of Taxation

SOLD FOR TAXES

EQUALIZED VALUES

Dollars

Dollars

Dollars

Dollars

Dollars

Dollars

Dollars

Dollars

Dollars

Dollars

Dollars

Dollars

Dollars

Dollars

Dollars

Dollars

Dollars

Dollars

Dollars

Dollars

Dollars

Dollars

Dollars

Cass County, Minnesota, for Taxes for the Year 1944.

Table with columns: VALUATIONS BY SCHOOL DISTRICTS AS EQUALIZED BY DEPARTMENT OF TAXATION, Rate and Tax Less Homestead Exemption, State Tax on Non-Homestead, TOTAL GENERAL TAX, SPECIAL TAXES, TOTAL TAXES, PAID, WHEN PAID, Number of Receipt, March Settlement 1945, June Settlement 1945, Penalty, November Settlement 1945, Collections to First Monday in January 1946, Delinquent on First Monday in January 1946, Total Delinquent Tax and Penalty, REMARKS. Includes handwritten entries for districts 1-20 and various tax amounts.

Handwritten entries in the left margin: G. Nelo O. Olson, U.S. of America, Charlie John Mayers, State of Minnesota, Charlie John Mayers.

Vertical handwritten text on the right edge of the page.

Cass County, Minnesota, for Taxes for the Year 1944.

Assessment Roll and Tax List of Unplatted Real Property in the ... of ... Unplatted Real Estate Assessed at 33 1/2 Per Cent of True and Full Value; Attached Machinery at 33 1/2 Per Cent of True and Full Value, Homesteads, up to True and Full Value of \$4000, Assessable at 20 per Cent, Class 3B; Remainder at 33 1/2 Per Cent, Class 3.

Form 4 CD WALKER-BAYNE COMPANY, MINNEAPOLIS

Table with columns: IN WHOSE NAME ASSESSED, TO WHOM TRANSFERRED, DESCRIPTION OF PROPERTY, ASSESSOR'S VALUATION, EQUALIZED VALUES, SOLD FOR TAXES. Contains handwritten entries for various property parcels, including 'U. S. of America' and 'Daniel G. Walsh', with detailed valuation data.

Table for tax calculation with columns: VALUATIONS BY SCHOOL DISTRICTS AS EQUALIZED BY DEPARTMENT OF TAXATION, Rate and Tax Less Homestead Exemption, State Tax on Non-Homestead, TOTAL GENERAL TAX, SPECIAL TAXES, TOTAL TAXES, PAID, WHEN PAID, Number of Receipt, March Settlement 1945, June Settlement 1945, Penalty, November Settlement 1945, Collections to First Monday in January 1946, Delinquent on First Monday in January 1946, Total Delinquent Tax and Penalty, REMARKS. Includes handwritten numbers and a stamp 'PAID IN FULL JUN 27 1945'.

Assessment Roll and Tax List of Unplatted Real Property in the _____ of _____, Minnesota. Unplatted Real Estate Assessed at 33 1/2 Per Cent of True and Full Value; Attached Machinery at 33 1/2 Per Cent of True and Full Value. Homesteads, up to True and Full Value of \$4000, Assessable at 20 per Cent, Class 3B; Remainder at 33 1/2 Per Cent, Class 3.

FORM 4 CD WALKER-BAYNE COMPANY, MINNEAPOLIS

Table with columns: IN WHOSE NAME ASSESSED, TO WHOM TRANSFERRED, DESCRIPTION OF PROPERTY, ASSESSOR'S VALUATION, EQUALIZED VALUES, and SOLD FOR TAXES. Includes entries for U.S. of America and Mattie Krueger.

Cass County, Minnesota, for Taxes for the Year 1944.

Table with columns: VALUATIONS BY SCHOOL DISTRICTS AS EQUALIZED BY DEPARTMENT OF TAXATION, SPECIAL TAXES, TOTAL GENERAL TAX, PAID, WHEN PAID, Number of Receipt, March Settlement 1945, June Settlement 1945, Penalty, November Settlement 1945, Collections to First Monday in January 1946, Delinquent on First Monday in January 1946, Total Delinquent Tax and Penalty, and REMARKS. Includes handwritten notes like 'Abatement # 2732' and 'PAID IN FULL JUN 28 1945'.

Assessment Roll and Tax List of Unplatted Real Property in the of Unplatted Real Estate Assessed at 33 1/3 Per Cent of True and Full Value; Attached Machinery at 33 1/3 Per Cent of True and Full Value, Homesteads, up to True and Full Value of \$4000, Assessable at 20 per Cent, Class 3B; Remainder at 33 1/3 Per Cent, Class 3.

Form 4 CD

Table with columns: IN WHOSE NAME ASSESSED, TO WHOM TRANSFERRED, DESCRIPTION OF PROPERTY, ASSESSOR'S VALUATION, EQUALIZED VALUES, SOLD FOR TAXES. Includes handwritten entries for various property owners like U.S. of America, Stephen A. & Helen Grace Barry, etc.

Table with columns: VALUATIONS BY SCHOOL DISTRICTS AS EQUALIZED BY DEPARTMENT OF TAXATION, Rate and Tax Less Homestead Exemption, State Tax on Non-Homestead, TOTAL GENERAL TAX, SPECIAL TAXES, TOTAL TAXES, PAID, WHEN PAID, Number of Receipt, March Settlement 1945, June Settlement 1945, November Settlement 1945, Collections to First Monday in January 1946, Delinquent on First Monday in January 1946, Total Delinquent Tax and Penalty, REMARKS. Includes handwritten notes on tax payments and abatements.

Assessment Roll and Tax List of Unplatted Real Property in the of Unplatted Real Estate Assessed at 33 1/3 Per Cent of True and Full Value; Attached Machinery at 33 1/3 Per Cent of True and Full Value, Homesteads, up to True and Full Value of \$4000, Assessable at 20 per Cent, Class 3B; Remainder at 33 1/3 Per Cent, Class 3.

Form 4 CD ILLINOIS STATE BOARD OF TAXATION, SPRINGFIELD, ILLINOIS

Table with columns: IN WHOSE NAME ASSESSED, TO WHOM TRANSFERRED, SUBDIVISION, Sec. or Lot, Town or Range, Number of Acres of Land, No. School District, Indicate Homestead Yes or No, ASSESSOR'S VALUATION (Structures & Improvements, True and Full Value of Land, Assessed Value of Homesteads, Assessed Value of Remainder, Total Assessed Value), EQUALIZED VALUES (Total Assessed Value as Equalized by Board, Total Assessed Value as Equalized by Department of Taxation), SOLD FOR TAXES.

Table with columns: VALUATIONS BY SCHOOL DISTRICTS AS EQUALIZED BY DEPARTMENT OF TAXATION (District No., Rate, etc.), Rate and Tax Less Homestead Exemption, State Tax on Non-Homestead, TOTAL GENERAL TAX, SPECIAL TAXES, TOTAL TAXES, PAID, WHEN PAID (Month, Day, Year), Number of Receipt, March Settlement 1945, June Settlement 1945, Penalty, November Settlement 1945, Penalty, Collections to First Monday in January 1946, Penalty, Delinquent on First Monday in January 1946, Total Delinquent Tax and Penalty, REMARKS.

Cass County, Minnesota, for Taxes for the Year 1944.

Assessment Roll and Tax List of Unplatted Real Property in Unplatted Real Estate Assessed at 33 1/3 Per Cent of True and Full Value; Attached Machinery at 33 1/3 Per Cent of True and Full Value.

You are hereby notified that your Real and Personal Property in the has been assessed at the following amounts for the year 1945... subject to changes of Board of Review, County Board, and Department of Taxation... And you are also notified that the amount of Real Property subject to changes of Board of Review, County Board, and Department of Taxation... on the Fourth Monday in June (being the 25th day) of this year for the further consideration of such assessment.

Table with columns: IN WHOSE NAME ASSESSED, TO WHOM TRANSFERRED, DESCRIPTION OF PROPERTY, ASSESSOR'S VALUATION, EQUALIZED VALUES, SOLD FOR TAXES, VALUATIONS BY SCHOOL DISTRICTS AS EQUALIZED BY DEPARTMENT OF TAXATION, Rate and Tax Less Exemption, State Tax on Non-Homestead, TOTAL GENERAL TAX, SPECIAL TAXES, TOTAL TAXES, PAID, WHEN PAID, Number of Receipt, March Settlement 1945, June Settlement 1945, Penalty, November Settlement 1945, Collections to First Monday in January 1946, Delinquent on First Monday in January 1946, Total Delinquent Tax and Penalty, REMARKS.

Ethel B. Vickers et al

Louis Krueger

Edmund C + Mathilda J. Thomas

Ethel B. Burns

Ralph E. De Lury

Ethel B. Burns

Abatement # 2732

450 8 495

2.10

Assessment Roll and Tax List of Unplatted Real Property in the of Unplatted Real Estate Assessed at 33 1/3 Per Cent of True and Full Value; Attached Machinery at 33 1/3 Per Cent of True and Full Value, Homesteads, up to True and Full Value of \$4000, Assessable at 20 per Cent, Class 3B; Remainder at 33 1/3 Per Cent, Class 3.

Table with columns: IN WHOSE NAME ASSESSED, TO WHOM TRANSFERRED, DESCRIPTION OF PROPERTY, ASSESSOR'S VALUATION, EQUALIZED VALUES, VALUATIONS BY SCHOOL DISTRICTS AS EQUALIZED BY DEPARTMENT OF TAXATION, Rate and Tax Less Homestead Exemption, State Tax on Non-Homestead, TOTAL GENERAL TAX, SPECIAL TAXES, TOTAL TAXES, PAID, WHEN PAID, Number of Receipt, March Settlement 1945, June Settlement 1945, Penalty, November Settlement 1945, Collections to First Monday in January 1946, Delinquent on First Monday in January 1946, Total Delinquent Tax and Penalty, REMARKS.

Assessment Roll and Tax List of Unplatted Real Property in the Unplatted Real Estate Assessed at 33 1/3 Per Cent of True and Full Value; Attached Machinery at 33 1/3 Per Cent of True and Full Value, Homesteads, up to True and Full Value of \$4000, Assessable at 20 per Cent, Class 3B; Remainder at 33 1/3 Per Cent, Class 3.

Form 4 CD WALKER-BAYNE COMPANY, MINNEAPOLIS

Table with columns: IN WHOSE NAME ASSESSED, TO WHOM TRANSFERRED, DESCRIPTION OF PROPERTY, ASSESSOR'S VALUATION, EQUALIZED VALUES, and SOLD FOR TAXES. Includes handwritten entries for various owners like U.S. of America, Myrtle Laflam, Geo. Klein, etc.

Table with columns: VALUATIONS BY SCHOOL DISTRICTS AS EQUALIZED BY DEPARTMENT OF TAXATION, SPECIAL TAXES, TOTAL TAXES, PAID, WHEN PAID, Number of Receipt, March Settlement 1945, June Settlement 1945, November Settlement 1945, Penalty, Collections to First Monday in January 1946, Delinquent on First Monday in January 1946, Total Delinquent Tax and Penalty, and REMARKS. Includes handwritten notes and checkmarks.

Assessment Roll and Tax List of Unplatted Real Property in the ... of ... Unplatted Real Estate Assessed at 33 1/2 Per Cent of True and Full Value; Attached Machinery at 33 1/2 Per Cent of True and Full Value, Homesteads, up to True and Full Value of \$4000, Assessable at 20 per Cent, Class 3B; Remainder at 33 1/2 Per Cent, Class 3.

Table with columns: IN WHOSE NAME ASSESSED, TO WHOM TRANSFERRED, SUBDIVISION, No. School District, Indicate Homestead, ASSESSOR'S VALUATION (True and Full Value of Land, Structures & Improvements, Machinery), EQUALIZED VALUES (Assessed Value of Homesteads, Assessed Value of Remainder, Total Assessed Value), SOLD FOR TAXES.

Table with columns: VALUATIONS BY SCHOOL DISTRICTS AS EQUALIZED BY DEPARTMENT OF TAXATION (District No., Rate, Mills), Rate and Tax Less Homestead Exemption, State Tax on Non-Homestead, TOTAL GENERAL TAX, SPECIAL TAXES, TOTAL TAXES, PAID, WHEN PAID, Number of Receipt, March Settlement 1945, June Settlement 1945, Penalty, November Settlement 1945, Collections to First Monday in January 1946, Delinquent on First Monday in January 1946, Total Delinquent Tax and Penalty, REMARKS.

Cass County, Minnesota, for Taxes for the Year 1944.

Assessment Roll and Tax List of Unplatted Real Property in the of Unplatted Real Estate Assessed at 33 1/2 Per Cent of True and Full Value; Attached Machinery at 33 1/2 Per Cent of True and Full Value, Homesteads, up to True and Full Value of \$4000, Assessable at 20 per Cent, Class 3B; Remainder at 33 1/2 Per Cent, Class 3.

Form 4 CD

Table with columns: IN WHOSE NAME ASSESSED, TO WHOM TRANSFERRED, DESCRIPTION OF PROPERTY, ASSESSOR'S VALUATION, EQUALIZED VALUES, SOLD FOR TAXES. Includes handwritten entries for property owners like Lerdy E. + Elaine J. Matson, Christina Björke, U. S. of America, Alvin Clarine, B. J. Nelson Mfg Co, R. L. Kuehmichel, U. S. of America, Sverre Olson, Carotina Clarine, Alvin Clarine.

Table with columns: VALUATIONS BY SCHOOL DISTRICTS AS EQUALIZED BY DEPARTMENT OF TAXATION, Rate and Tax Less Homestead Exemption, State Tax on Non-Homestead, TOTAL GENERAL TAX, SPECIAL TAXES, PAID, WHEN PAID, Number of Receipt, March Settlement 1945, June Settlement 1945, November Settlement 1945, Collections to First Monday in January 1946, Delinquent on First Monday in January 1946, Total Delinquent Tax and Penalty, REMARKS. Includes handwritten notes like 'Abatement #2636', '1st Half Paid', 'Pen. and 4.34 Abated'.

Cass County, Minnesota, for Taxes for the Year 1944.

Assessment Roll and Tax List of Unplatted Real Property in the ... of ... Unplatted Real Estate Assessed at 33 1/2 Per Cent of True and Full Value; Attached Machinery at 33 1/2 Per Cent of True and Full Value, Homesteads, up to True and Full Value of \$4000, Assessable at 20 per Cent, Class 3B; Remainder at 33 1/2 Per Cent, Class 3.

Table with columns: IN WHOSE NAME ASSESSED, TO WHOM TRANSFERRED, DESCRIPTION OF PROPERTY, ASSESSOR'S VALUATION, EQUALIZED VALUES, and SOLD FOR TAXES. Includes handwritten entries for Fred W. & Jessie M. Reising, W. J. Weiss, Selford D. & Laura Hanson, Bert R. Gardner, Ole Berg & Inez Berg, Agnes Jakschi, Cora & Frank Orason, Alois Jakschi, Ole Berg & Inez Berg, Walter S. & Magdalene H. Leslie, and Ole J. & Inez M. Berg.

Table with columns: VALUATIONS BY SCHOOL DISTRICTS AS EQUALIZED BY DEPARTMENT OF TAXATION, Rate and Tax Less Homestead Exemption, State Tax on Non-Homestead, TOTAL GENERAL TAX, SPECIAL TAXES, TOTAL TAXES, PAID, WHEN PAID, Number of Receipt, March Settlement 1945, June Settlement 1945, Penalty, November Settlement 1945, Penalty, Collections to First Monday in January 1946, Delinquent on First Monday in January 1946, Total Delinquent Tax and Penalty, and REMARKS. Includes handwritten entries for various districts and tax amounts.

Cass County, Minnesota, for Taxes for the Year 1944.

Assessment Roll and Tax List of Unplatted Real Property in the of Unplatted Real Estate Assessed at 33 1/2 Per Cent of True and Full Value; Attached Machinery at 33 1/2 Per Cent of True and Full Value, Homesteads, up to True and Full Value of \$4000, Assessable at 20 per Cent, Class 3B; Remainder at 33 1/2 Per Cent, Class 3.

Form 4 CD 11-14-43 REVISED, MINNAPOLIS

Table with columns: IN WHOSE NAME ASSESSED, TO WHOM TRANSFERRED, DESCRIPTION OF PROPERTY, ASSESSOR'S VALUATION, EQUALIZED VALUES, and SOLD FOR TAXES. Includes handwritten entries for various property owners like Bert Jamison and Una R. Woolley.

Table with columns: VALUATIONS BY SCHOOL DISTRICTS AS EQUALIZED BY DEPARTMENT OF TAXATION, Rate and Tax Less Homestead Exemption, State Tax on Non-Homestead, TOTAL GENERAL TAX, SPECIAL TAXES, TOTAL TAXES, PAID, WHEN PAID, Number of Receipt, March Settlement 1945, June Settlement 1945, Penalty, November Settlement 1945, Penalty, Collections to First Monday in January 1946, Penalty, Delinquent on First Monday in January 1946, Total Delinquent Tax and Penalty, and REMARKS. Includes handwritten tax amounts and payment dates.

Assessment Roll and Tax List of Unplatted Real Property in the _____ of _____, Unplatted Real Estate Assessed at 33 1/3 Per Cent of True and Full Value; Attached Machinery at 33 1/3 Per Cent of True and Full Value. Homesteads, up to True and Full Value of \$4000, Assessable at 20 per Cent, Class 3B; Remainder at 33 1/3 Per Cent, Class 3.

Table with columns: IN WHOSE NAME ASSESSED, TO WHOM TRANSFERRED, DESCRIPTION OF PROPERTY, ASSESSOR'S VALUATION, EQUALIZED VALUES, and SOLD FOR TAXES. Includes entries for Andrew Magnuson, A.J. Thompson, Minnie De Florian, John B. De Florian, R.O. & S.J. Simonson, and Walter J. Leslie.

Cass County, Minnesota, for Taxes for the Year 1944.

Table with columns: VALUATIONS BY SCHOOL DISTRICTS AS EQUALIZED BY DEPARTMENT OF TAXATION, Rate and Tax Less Homestead Exemption, State Tax on Non-Homestead, TOTAL GENERAL TAX, SPECIAL TAXES, TOTAL TAXES, PAID, WHEN PAID, Number of Receipt, March Settlement 1945, June Settlement 1945, Penalty, November Settlement 1945, Collections to First Monday in January 1946, Delinquent on First Monday in January 1946, Total Delinquent Tax and Penalty, and REMARKS. Includes handwritten entries for districts 14, 15, 2, 7, 22, and 60.

Assessment Roll and Tax List of Unplatted Real Property in the _____ of _____, Minnesota, for Taxes for the Year 1944. Unplatted Real Estate Assessed at 33 1/3 Per Cent of True and Full Value; Attached Machinery at 33 1/3 Per Cent of True and Full Value. Homesteads, up to True and Full Value of \$4000, Assessable at 20 per Cent, Class 3B; Remainder at 33 1/3 Per Cent, Class 3.

Table with columns: IN WHOSE NAME ASSESSED, TO WHOM TRANSFERRED, DESCRIPTION OF PROPERTY, ASSESSOR'S VALUATION, EQUALIZED VALUES, and SOLD FOR TAXES. Includes handwritten entries for Mary A. Ray, Edith M. Nephew, and John Hanson.

Cass County, Minnesota, for Taxes for the Year 1944.

Table with columns: VALUATIONS BY SCHOOL DISTRICTS AS EQUALIZED BY DEPARTMENT OF TAXATION, SPECIAL TAXES, TOTAL GENERAL TAX, PAID, WHEN PAID, Number of Receipt, March Settlement 1945, June Settlement 1945, Penalty, November Settlement 1945, Collections to First Monday in January 1946, Delinquent on First Monday in January 1946, Total Delinquent Tax and Penalty, and REMARKS. Includes handwritten tax amounts and payment dates.

Assessment Roll and Tax List of Unplatted Real Property in the of Unplatted Real Estate Assessed at 33 1/2 Per Cent of True and Full Value; Attached Machinery at 33 1/2 Per Cent of True and Full Value, Homesteads, up to True and Full Value of \$4000, Assessable at 20 per Cent, Class 3B; Remainder at 33 1/2 Per Cent, Class 3.

Table with columns: IN WHOSE NAME ASSESSED, TO WHOM TRANSFERRED, SUBDIVISION, No. School District, Indicate Homestead, ASSESSOR'S VALUATION (True and Full Value of Lands, Structures & Improvements, etc.), EQUALIZED VALUES, SOLD FOR TAXES.

Table with columns: VALUATIONS BY SCHOOL DISTRICTS AS EQUALIZED BY DEPARTMENT OF TAXATION, Rate and Tax Less Homestead Exemption, State Tax on Non-Homestead, TOTAL GENERAL TAX, SPECIAL TAXES, TOTAL TAXES, PAID, WHEN PAID, Number of Receipt, March Settlement 1945, June Settlement 1945, Penalty, November Settlement 1945, Penalty, Collections to First Monday in January 1946, Penalty, Delinquent on First Monday in January 1946, Total Delinquent Tax and Penalty, REMARKS.

Cass County, Minnesota, for Taxes for the Year 1944.

Assessment Roll and Tax List of Unplatted Real Property in the of Unplatted Real Estate Assessed at 33 1/2 Per Cent of True and Full Value; Attached Machinery at 33 1/2 Per Cent of True and Full Value, Homesteads, up to True and Full Value of \$4000, Assessable at 20 per Cent, Class 3B; Remainder at 33 1/2 Per Cent, Class 3.

Table with columns: IN WHOSE NAME ASSESSED, TO WHOM TRANSFERRED, DESCRIPTION OF PROPERTY, ASSESSOR'S VALUATION, EQUALIZED VALUES, VALUATIONS BY SCHOOL DISTRICTS AS EQUALIZED BY DEPARTMENT OF TAXATION, Rate and Tax Less Homestead Exemption, State Tax on Non-Homestead, TOTAL GENERAL TAX, SPECIAL TAXES, TOTAL TAXES, PAID, WHEN PAID, Number of Receipt, March Settlement 1945, June Settlement 1945, Penalty, November Settlement 1945, Penalty, Collections to First Monday in January 1946, Delinquent on First Monday in January 1946, Total Delinquent Tax and Penalty, REMARKS.

Assessment Roll and Tax List of Unplatted Real Property in the of Unplatted Real Estate Assessed at 33 1/3 Per Cent of True and Full Value; Attached Machinery at 33 1/3 Per Cent of True and Full Value, Homesteads, up to True and Full Value of \$4000, Assessable at 20 per Cent, Class 3B; Remainder at 33 1/3 Per Cent, Class 3.

Form 4 CD WALKER-BAYNE COMPANY, MINNEAPOLIS

Table with columns: IN WHOSE NAME ASSESSED, TO WHOM TRANSFERRED, DESCRIPTION OF PROPERTY, ASSESSOR'S VALUATION, EQUALIZED VALUES, VALUATIONS BY SCHOOL DISTRICTS AS EQUALIZED BY DEPARTMENT OF TAXATION, Rate and Tax Less Homestead Exemption, State Tax on Non-Homestead, TOTAL GENERAL TAX, SPECIAL TAXES, TOTAL TAXES, PAID, WHEN PAID, Number of Receipt, March Settlement 1945, June Settlement 1945, Penalty, November Settlement 1945, Penalty, Collections to First Monday in January 1946, Penalty, Delinquent on First Monday in January 1946, Total Delinquent Tax and Penalty, REMARKS.

Assessment Roll and Tax List of Unplatted Real Property in the of Unplatted Real Estate Assessed at 33 1/2 Per Cent of True and Full Value; Attached Machinery at 33 1/2 Per Cent of True and Full Value, Homesteads, up to True and Full Value of \$4000, Assessable at 20 per Cent, Class 3B; Remainder at 33 1/2 Per Cent, Class 3.

Table with columns: IN WHOSE NAME ASSESSED, TO WHOM TRANSFERRED, DESCRIPTION OF PROPERTY, ASSESSOR'S VALUATION, EQUALIZED VALUES, and SOLD FOR TAXES. Includes handwritten entries for Ed Wald, Theodore Nordgard, and Armand Byker.

Table with columns: VALUATIONS BY SCHOOL DISTRICTS AS EQUALIZED BY DEPARTMENT OF TAXATION, Rate and Tax Less Homestead Exemption, State Tax on Non-Homestead, TOTAL GENERAL TAX, SPECIAL TAXES, TOTAL TAXES, PAID, WHEN PAID, Number of Receipt, March Settlement 1945, June Settlement 1945, Penalty, November Settlement 1945, Penalty, Collections to First Monday in January 1946, Penalty, Delinquent on First Monday in January 1946, Total Delinquent Tax and Penalty, REMARKS.

142-81

Assessment Roll of 1st 5

Assessment Roll of 1st 5

Cass County, Minnesota, for Taxes for the Year 1944.

Assessment Roll and Tax List of Unplatted Real Property in the of Unplatted Real Estate Assessed at 33 1/2 Per Cent of True and Full Value; Attached Machinery at 33 1/2 Per Cent of True and Full Value, Homesteads, up to True and Full Value of \$4000, Assessable at 20 per Cent, Class 3B; Remainder at 33 1/2 Per Cent, Class 3.

Table with columns: IN WHOSE NAME ASSESSED, TO WHOM TRANSFERRED, SUBDIVISION, ACRES, INDICATE HOMESTEAD, ASSESSOR'S VALUATION (True and Full Value of Land, Structures & Improvements, Total True and Full Value), EQUALIZED VALUES (Total Assessed Value of Land, Total Assessed Value of Structures and Improvements, Total Assessed Value of Land and Structures), and SOLD FOR TAXES.

Table with columns: VALUATIONS BY SCHOOL DISTRICTS AS EQUALIZED BY DEPARTMENT OF TAXATION (District No., Rate, etc.), Rate and Tax Less Homestead Exemption, State Tax on Non-Homestead, TOTAL GENERAL TAX, SPECIAL TAXES, TOTAL TAXES, PAID, WHEN PAID (Month, Day, Year), Number of Receipt, March Settlement 1945, June Settlement 1945, Penalty, November Settlement 1945, Collections to First Monday in January 1946, Delinquent on First Monday in January 1946, Total Delinquent Tax and Penalty, and REMARKS.

Cass County, Minnesota, for Taxes for the Year 1944.

Assessment Roll and Tax List of Unplatted Real Property in the Unplatted Real Estate Assessed at 33 1/2 Per Cent of True and Full Value; Attached Machinery at 33 1/2 Per Cent of True and Full Value, Homesteads, up to True and Full Value of \$4000, Assessable at 20 per Cent, Class 3B; Remainder at 33 1/2 Per Cent, Class 3.

Table with columns: IN WHOSE NAME ASSESSED, TO WHOM TRANSFERRED, SUBDIVISION, No. School District, Indicate Homestead, ASSESSOR'S VALUATION (True and Full Value of Land, Structures & Improvements, Total True and Full Value of Land Including all Structures, Improvements and Machinery, Assessed Value of Homesteads up to \$4,000 at 20 per cent Class 3B, Assessed Value of Remainder at 33 1/2 per cent Class 3, Total Assessed Value of Land Including all Structures, Improvements and Machinery, Total Assessed Value as Equalized by the Board of Review, Total Assessed Value as Equalized by the Department of Taxation), SOLD FOR TAXES, EQUALIZED VALUES.

Table with columns: VALUATIONS BY SCHOOL DISTRICTS AS EQUALIZED BY DEPARTMENT OF TAXATION (District No., District Rate, District No., District Rate), Rate and Tax Less Homestead Exemption, State Tax on Non-Homestead, TOTAL GENERAL TAX, SPECIAL TAXES, TOTAL TAXES, PAID, WHEN PAID (Month, Day, Year), Number of Receipt, March Settlement 1945, June Settlement 1945, Penalty, November Settlement 1945, Penalty, Collections to First Monday in January 1945, Penalty, Delinquent on First Monday in January 1946, Total Delinquent Tax and Penalty, REMARKS.

Cass County, Minnesota, for Taxes for the Year 1944.

Assessment Roll and Tax List of Unplatted Real Property in the ... of ... Unplatted Real Estate Assessed at 33 1/2 Per Cent of True and Full Value; Attached Machinery at 33 1/2 Per Cent of True and Full Value. Homesteads, up to True and Full Value of \$4000, Assessable at 20 per Cent, Class 3B; Remainder at 33 1/2 Per Cent, Class 3.

Table with columns: IN WHOSE NAME ASSESSED, TO WHOM TRANSFERRED, SUBDIVISION, No. School District, Indicate Homestead, True and Full Value of Lands, Structures & Improvements, Assessor's Valuation, Equalized Values, SOLD FOR TAXES.

Table with columns: VALUATIONS BY SCHOOL DISTRICTS AS EQUALIZED BY DEPARTMENT OF TAXATION, Rate and Tax Less Homestead Exemption, State Tax on Non-Homestead, TOTAL GENERAL TAX, SPECIAL TAXES, TOTAL TAXES, PAID, WHEN PAID, Number of Receipt, March Settlement, June Settlement, November Settlement, Penalty, Collections to First Monday in January 1946, Delinquent on First Monday in January 1946, Total Delinquent Tax and Penalty, REMARKS.

Cass County, Minnesota, for Taxes for the Year 1944.

Assessment Roll and Tax List of Unplatted Real Property in the of Unplatted Real Estate Assessed at 33 1/3 Per Cent of True and Full Value; Attached Machinery at 33 1/3 Per Cent of True and Full Value, Homesteads, up to True and Full Value of \$4000, Assessable at 20 per Cent, Class 3B; Remainder at 33 1/3 Per Cent, Class 3.

Table with columns: IN WHOSE NAME ASSESSED, TO WHOM TRANSFERRED, DESCRIPTION OF PROPERTY, ASSESSOR'S VALUATION, EQUALIZED VALUES, VALUATIONS BY SCHOOL DISTRICTS AS EQUALIZED BY DEPARTMENT OF TAXATION, SPECIAL TAXES, TOTAL GENERAL TAX, PAID, WHEN PAID, Number of Receipt, March Settlement 1945, June Settlement 1945, Penalty, November Settlement 1945, Collections to First Monday in January 1946, Delinquent on First Monday in January 1946, Total Delinquent Tax and Penalty, REMARKS.

Assessment Roll and Tax List of Unplatted Real Property in the of Unplatted Real Estate Assessed at 33 1/4 Per Cent of True and Full Value; Attached Machinery at 33 1/4 Per Cent of True and Full Value, Homesteads, up to True and Full Value of \$1000, Assessable at 20 per Cent, Class 3B; Remainder at 33 1/4 Per Cent, Class 3.

Table with columns: IN WHOSE NAME ASSESSED, TO WHOM TRANSFERRED, DESCRIPTION OF PROPERTY, ASSESSOR'S VALUATION, EQUALIZED VALUES, VALUATIONS BY SCHOOL DISTRICTS AS EQUALIZED BY DEPARTMENT OF TAXATION, SPECIAL TAXES, TOTAL TAXES, PAID, WHEN PAID, Number of Receipt, March Settlement 1945, June Settlement 1945, Penalty, November Settlement 1945, Penalty, Collections to First Monday in January 1946, Penalty, Delinquent on First Monday in January 1946, Total Delinquent Tax and Penalty, REMARKS.

Derry J. Purry
J. E. Hall

State of Minnesota
U. S. of America

State of Minnesota

State of Minnesota

U. S. of America

U. S. of America

U. S. of America

U. S. of America

U. S. of America

U. S. of America

U. S. of America

U. S. of America

U. S. of America

U. S. of America

U. S. of America

U. S. of America

U. S. of America

U. S. of America

Chas. A. O. Moller

U. S. of America

U. S. of America

U. S. of America

U. S. of America

U. S. of America

U. S. of America

U. S. of America

142-31

St

St

St

St

St

St

St

St

St. A. Lot 7

Block 1000000000

And. Part of Lot 5

And. Part of Lot 5

And. Part of Lot 5

Assessment Roll and Tax List of Unplatted Real Property in the _____ of _____, Unplatted Real Estate Assessed at 33 1/3 Per Cent of True and Full Value; Attached Machinery at 33 1/3 Per Cent of True and Full Value, Homesteads, up to True and Full Value of \$4000, Assessable at 20 per Cent, Class 3B; Remainder at 33 1/3 Per Cent, Class 3.

Table with columns: IN WHOSE NAME ASSESSED, TO WHOM TRANSFERRED, DESCRIPTION OF PROPERTY, ASSESSOR'S VALUATION, EQUALIZED VALUES, SOLD FOR TAXES. Includes handwritten entries for Leonard E. Tucker, W.E. + J.M. Diebel, Philip J. Jewell, W.E. Diebel, W.E. + J.M. Diebel, Fanny E. Redekuhr, State of Minnesota, Philip Jewell, Philip + Dorothy Jewell, Anne Staede, Chas. Sloan A.O. Mohler, State of Minnesota, Philip Jewell + Dorothy Jewell, Anne Staede, U.S. of America.

Cass County, Minnesota, for Taxes for the Year 1944.

Table with columns: VALUATIONS BY SCHOOL DISTRICTS AS EQUALIZED BY DEPARTMENT OF TAXATION, Rate and Tax Less Homestead Exemption, State Tax on Non-Homestead, TOTAL GENERAL TAX, SPECIAL TAXES, PAID, WHEN PAID, Number of Receipt, March Settlement 1945, June Settlement 1945, November Settlement 1945, Collections to First Monday in January 1946, Delinquent on First Monday in January 1946, Total Delinquent Tax and Penalty, REMARKS. Includes handwritten entries for various districts and payment dates.

Assessment Roll and Tax List of Unplatted Real Property in the of Unplatted Real Estate Assessed at 33 1/2 Per Cent of True and Full Value; Attached Machinery at 33 1/2 Per Cent of True and Full Value, Homesteads, up to True and Full Value of \$4000, Assessable at 20 per Cent, Class 3B; Remainder at 33 1/2 Per Cent, Class 3.

Table with columns: IN WHOSE NAME ASSESSED, TO WHOM TRANSFERRED, DESCRIPTION OF PROPERTY, ASSESSOR'S VALUATION, EQUALIZED VALUES, VALUATIONS BY SCHOOL DISTRICTS AS EQUALIZED BY DEPARTMENT OF TAXATION, Rate and Tax Less Homestead Exemption, State Tax on Non-Homestead, TOTAL GENERAL TAX, SPECIAL TAXES, TOTAL TAXES, PAID, WHEN PAID, Number of Receipt, March Settlement 1945, June Settlement 1945, Penalty, November Settlement 1945, Penalty, Collections to First Monday in January 1945, Penalty, Delinquent on First Monday in January 1946, Total Delinquent Tax and Penalty, REMARKS.

Assessment Roll and Tax List of Unplatted Real Property in the of Cass County, Minnesota, for Taxes for the Year 1944.

Table with columns: IN WHOSE NAME ASSESSED, TO WHOM TRANSFERRED, DESCRIPTION OF PROPERTY, ASSESSOR'S VALUATION, EQUALIZED VALUES, VALUATIONS BY SCHOOL DISTRICTS AS EQUALIZED BY DEPARTMENT OF TAXATION, Rate and Tax Less Homestead Exemption, State Tax on Non-Homestead, TOTAL GENERAL TAX, SPECIAL TAXES, TOTAL TAXES, PAID, WHEN PAID, Number of Receipt, March Settlement 1945, June Settlement 1945, November Settlement 1945, Collections to First Monday in January 1946, Delinquent on First Monday in January 1946, Total Delinquent Tax and Penalty, REMARKS.

Assessment Roll and Tax List of Platted Real Property in the

Platted Real Estate Assessed at 40 Per Cent of True and Full Value; Attached Machinery at 33 1/3 Per Cent of True and Full Value, Homesteads, up to True and Full Value of \$4000, Assessable at 25 Per Cent, Class 3C; Attached Machinery at 33 1/3 Per Cent, Class 3; Remainder at 40 Per Cent, Class 4.

Table with columns: IN WHOSE NAME ASSESSED, TO WHOM TRANSFERRED, SUBDIVISION, Lot, Block, No. School District, Indicate Homestead, ASSESSOR'S VALUATION (True and Full Value of Land, Structures & Improvement, Total True and Full Value, Assessed Value of Homesteads, Assessed Value of Machinery, Assessed Value of Remainder), EQUALIZED VALUES (Total Assessed Value, Total Assessed Value as Equalized by County Board, Total Assessed Value as Equalized by Department of Taxation), SOLD FOR TAXES.

Table with columns: VALUATIONS BY SCHOOL DISTRICTS AS EQUALIZED BY DEPARTMENT OF TAXATION (District No., Rate, District No., Rate), Rate and Tax Less Exemption, State Tax on Non-Homestead, TOTAL GENERAL TAX, SPECIAL TAXES, TOTAL TAXES, PAID, WHEN PAID (Month, Day, Year), Number of Receipt, March Settlement 1945, June Settlement 1945, November Settlement 1945, Collections to First Monday in January 1946, Penalty, Delinquent on First Monday in January 1946, Total Delinquent Tax and Penalty, REMARKS.

Shingobee Island

And Plat of Sh. of

Ball, Kabeokona Springs

to Beach, Chippewa Isl. And Plat of Lot 5

SR. & Lot 7

Assessment Roll and Tax List of Platted Real Property in the _____ of _____

Platted Real Estate Assessed at 40 Per Cent of True and Full Value; Attached Machinery at 33 1/2 Per Cent of True and Full Value, Homesteads, up to True and Full Value of \$4000, Assessable at 25 Per Cent, Class 3C; Attached Machinery at 33 1/2 Per Cent, Class 3; Remainder at 40 Per Cent, Class 4.

Table with columns: IN WHOSE NAME ASSESSED, TO WHOM TRANSFERRED, DESCRIPTION OF PROPERTY, ASSESSOR'S VALUATION, EQUALIZED VALUES, VALUATIONS BY SCHOOL DISTRICTS AS EQUALIZED BY DEPARTMENT OF TAXATION, Rate and Tax Less Homestead Exemption, State Tax on Non-Homestead, TOTAL GENERAL TAX, SPECIAL TAXES, TOTAL TAXES, PAID, WHEN PAID, Number of Receipt, March Settlement 1945, June Settlement 1945, November Settlement 1945, Penalty, Collections to First Monday in January 1946, Delinquent on First Monday in January 1946, Total Delinquent Tax and Penalty, REMARKS.

Wa-Ba-Na-Nu-Bay
all of lot 1 sec. 13-14-2-3-1

Ke-zhe-bounce
State of Minnesota Robert Deere

Roll K. Tucker One-lak-ti-e-shig-oh
U. S. of America

Harry W. Anderson
U. S. of America

2nd Half Paid NOV 8 1945
1st Half Paid JUN 21 1945
2nd Half Paid NOV 8 1945
1st Half Paid JUN 21 1945

200 200 80 80 114 80 1264 24 1288

Assessment Roll and Tax List of Platted Real Property in the _____ of _____

Cass County, Minnesota, for Taxes for the Year 1944.

Platted Real Estate Assessed at 40 Per Cent of True and Full Value; Attached Machinery at 33 1/2 Per Cent of True and Full Value, Homesteads, up to True and Full Value of \$4000, Assessable at 25 Per Cent, Class 3C; Attached Machinery at 33 1/2 Per Cent, Class 3; Remainder at 40 Per Cent, Class 4.

Table with columns: IN WHOSE NAME ASSESSED, TO WHOM TRANSFERRED, SUBDIVISION, Lot, Block, No. School District, Indicate Homestead, ASSESSOR'S VALUATION, EQUALIZED VALUES, VALUATIONS BY SCHOOL DISTRICTS AS EQUALIZED BY DEPARTMENT OF TAXATION, Rate and Tax Less Homestead Exemption, State Tax on Non-Homestead, TOTAL GENERAL TAX, SPECIAL TAXES, TOTAL TAXES, PAID, WHEN PAID, Number of Receipt, March Settlement 1945, June Settlement 1945, Penalty, November Settlement 1945, Collections to First Monday in January 1946, Delinquent on First Monday in January 1946, Total Delinquent Tax and Penalty, REMARKS.

U. S. of America, Crescent Beach, Breezy Point Joint, Ditchie Gumee

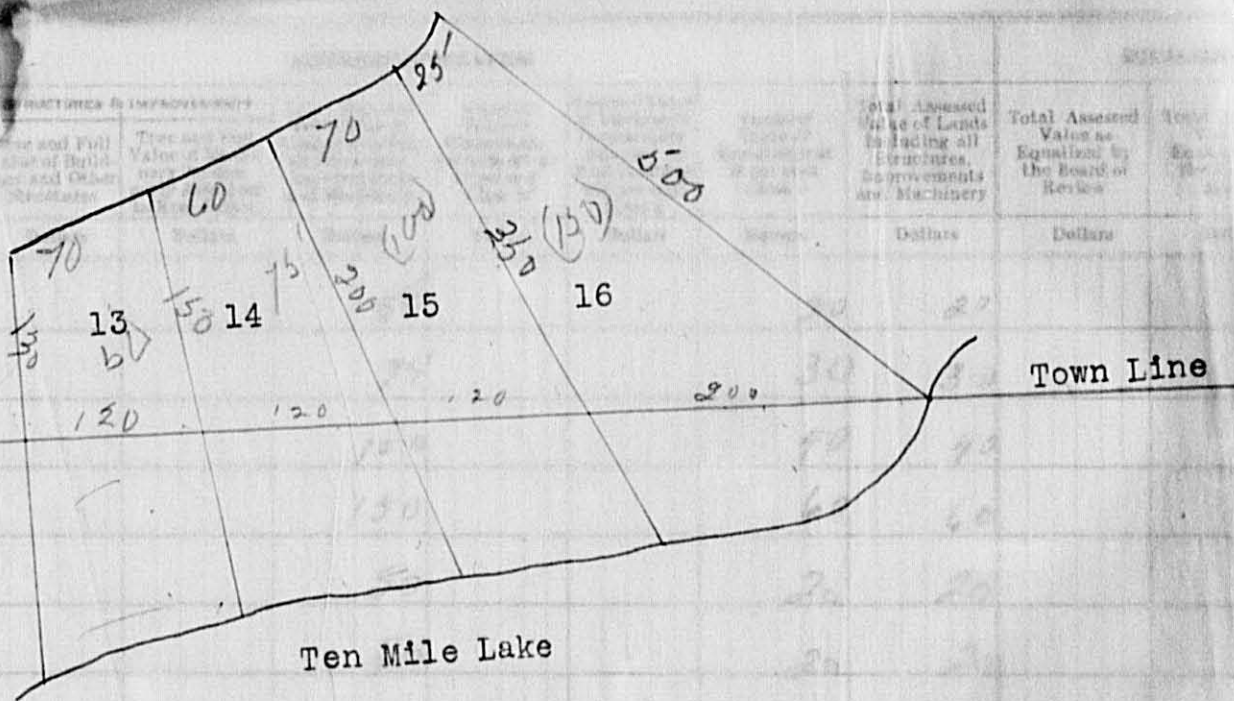
Surf Lake Heights, Charlton Beach

Assessment Roll and Tax List of Platted Real Property in the of Cass County, Minnesota, for Taxes for the Year 1944.

Table with columns: IN WHOSE NAME ASSESSED, TO WHOM TRANSFERRED, DESCRIPTION OF PROPERTY, ASSESSOR'S VALUATION, EQUALIZED VALUES, VALUATIONS BY SCHOOL DISTRICTS AS EQUALIZED BY DEPARTMENT OF TAXATION, Rate and Tax Less Homestead Exemption, State Tax on Non-Homestead, TOTAL GENERAL TAX, SPECIAL TAXES, TOTAL TAXES, PAID, WHEN PAID, Number of Receipt, March Settlement 1945, June Settlement 1945, Penalty, November Settlement 1945, Penalty, Collections to First Monday in January 1946, Penalty, Delinquent on First Monday in January 1946, Total Delinquent Tax and Penalty, REMARKS.

Assessment Roll and Tax List of Platted Real Property in the

IN WHOSE NAME ASSESSED	TO WHOM TRANSFERRED	DESCRIPTION OF PROPERTY	Lot	Block	VALUES	SOLD FOR TAXES
William E. Ekenberry	Ollie L. Kridelbaugh	Chariton Beach	13	31		
Elmer L. Gookin	" " "	" " "	14	"		
Ollie L. Kridelbaugh	" " "	" " "	15	"		
William E. Ekenberry	" " "	" " "	16	"		
"	"	"	17	"		
"	Helen O. Reese	"	18	"		
William E. Ekenberry	"	"	19	"		
"	"	"	20	"		
"	Helen O. Reese	"	21	"		
William E. Ekenberry	George E. & Muriel E. Westens	"	22	"		
Elmer L. Gookin	"	"	23	"		
William E. Ekenberry	"	"	24	"		
Helen O. Reese	"	"	25	"		
Elmer L. Gookin	Wm. S. Elizabeth S. Profner	Outlet A				
William E. Ekenberry	Basel E. Profner	" B				



No.	VALUATIONS BY SCHOOL DISTRICTS AS EQUALIZED BY DEPARTMENT OF TAXATION				Rate and Tax Less Homestead Exemption	State Tax on Non-Homestead	TOTAL GENERAL TAX	SPECIAL TAXES				TOTAL TAXES	PAID	WHEN PAID	Number of Receipt	March Settlement 1945	June Settlement 1945	Penalty	November Settlement 1945	Penalty	Collections to First Monday in January 1946	Penalty	Delinquent on First Monday in January 1946	Total Delinquent Tax and Penalty	REMARKS
	District No.	District No.	District No.	District No.				Dollars	Dollars	Dollars	Dollars														
1						294	322						PAID IN FULL JUN 27 1945	7628		322									
2						472	480						PAID IN FULL JUN 28 1945	7628		480									
3						630	642						PAID IN FULL JUN 27 1945	7628		642									
4						946	964						PAID IN FULL MAY 22 1945	4413		964									
5						314	322						PAID IN FULL JUL 11 1945	9254		322									
6						314	322						PAID IN FULL APR 4 1945	3630		322									
7						316	322						PAID IN FULL JUN 27 1945	7628		322									
8						314	322						PAID IN FULL JUL 11 1945	9254		322									
9						316	322						PAID IN FULL APR 4 1945	3630		322									
10						316	322						PAID IN FULL MAY 22 1945	4413		322									
11						316	322						PAID IN FULL MAY 18 1945	4759		322									
12						316	322						PAID IN FULL JUL 11 1945	9254		322									
13						316	322						PAID IN FULL APR 4 1945	3630		322									
14						126	128						PAID IN FULL MAY 18 1945	4759		128									
15						126	128						PAID IN FULL JUN 27 1945	7628		128									
16																									
17																									
18																									
19																									
20																									

Page Total 19 N/A 346 5460 102
 Grand Total 20 # 6090 224820 2606
 N/A 8800 14890

Page Total 5562
 Grand Total 237426

865 865 3410 3410

Assessment Roll and Tax List of Platted Real Property in the _____ of _____, Minnesota, for Taxes for the Year 1944.



Platted Real Estate Assessed at 40 Per Cent of True and Full Value; Attached Machinery at 33 1/3 Per Cent of True and Full Value. Homesteads, up to True and Full Value of \$4000, Assessable at 25 Per Cent, Class 3C; Attached Machinery at 33 1/3 Per Cent, Class 3; Remainder at 40 Per Cent, Class 4.

Table with columns for 'DESCRIPTION OF PROPERTY' (including subdivision, lot, block), 'ASSESSOR'S VALUATION' (including true and full value, assessed value, and machinery value), and 'EQUALIZED VALUES'. It lists property owners like William Eikenberry, Helen O. Reese, and George E. & Muriel E. Mertens.

Page Total 19 114 346 5460 102
Frank Hotel 20 # 6090 8800 14890
2248 20 2606

Table with columns for 'VALUATIONS BY SCHOOL DISTRICTS AS EQUALIZED BY DEPARTMENT OF TAXATION', 'TOTAL GENERAL TAX', 'SPECIAL TAXES', and 'PAID WHEN PAID'. It includes columns for month, day, year, and settlement amounts.

Page Total 5562
Grand Total 237426

Assessment Roll and Tax List of Platted Real Property in the _____ of _____

Cass County, Minnesota, for Taxes for the Year 1944.

Platted Real Estate Assessed at 40 Per Cent of True and Full Value; Attached Machinery at 33 1/2 Per Cent of True and Full Value, Homesteads, up to True and Full Value of \$4000, Assessable at 25 Per Cent, Class 3C; Attached Machinery at 33 1/2 Per Cent, Class 3; Remainder at 40 Per Cent, Class 4.

Table with columns: IN WHOSE NAME ASSESSED, TO WHOM TRANSFERRED, DESCRIPTION OF PROPERTY, ASSESSOR'S VALUATION, EQUALIZED VALUES, VALUATIONS BY SCHOOL DISTRICTS AS EQUALIZED BY DEPARTMENT OF TAXATION, SPECIAL TAXES, TOTAL TAXES, PAID, WHEN PAID, Number of Receipt, March Settlement, June Settlement, November Settlement, Collections to First Monday in January, Delinquent on First Monday in January, Total Delinquent Tax and Penalty, REMARKS.

Lower abbin to Walker, Village of Walker.

Transferred to Village of Orderville #91.

Vertical text on the left margin: W-B-Na-Ne Bay, Crescent Beach, Add, Breezy Point, Heights, Chariton Beach.

