

Assessment & Tax List - 1963  
Shingobee









Assessment of

COLLECTIONS OF TAXES OF 196

OF

CASS COUNTY, MINNESOTA

FUNDS	MARCH SETTLEMENT 1964	JUNE SETTLEMENT 1964	NOV. SETTLEMENT 1964	Amount Collected from Nov. 19, 1964, to First Monday in Jan. 1965	REDUCTIONS	Total Reductions and Collected	BALANCE UNCOLLECTED	ADDITIONS	Total Uncollected to First Monday in January, 1965
State-Non-Homestead	195 79	1001 90	461 14	35 48					
State-Homestead	190 16	1296 49	635 72	43 67					
County Revenue	1162 14	4949 86	2455 11	168 19					
County Road and Bridge	737 63	3173 51	1558 31	106 77					
County Welfare	2194 12	9442 77	4636 14	317 67					
County Hoagland Interest	70 81	304 66	149 60	10 34					
County Hoagland Interest	32 48	139 63	68 56	4 70					
County Hoagland Interest	190 68	820 35	402 82	27 60					
County Hoagland Interest	6 64	28 56	14 02	9 6					
Town Revenue	237 6	3173 5	1558 3	10 68					
Town Road and Bridge	368 82	1586 75	779 15	53 58					
Town State Loan									
Town State Loan	73 76	317 35	155 83	10 68					
Town State Loan	110 64	476 03	233 71	16 01					
School Local 1 Mill									
School Special	1727 23	6233 37	3264 57	230 21					
School State Loan									
Deficiency	1691 08	6845 26	3361 27	230 28					
Tuition									
Transportation									
Transportation	194 73	837 80	411 39	28 19					
Transportation	37 69	168 20	82 59	5 66					
Transportation	387 48	1675 61	822 79	56 37					
Transportation									
Transportation	73 76	317 35	155 83	10 68					
Transportation	17 70	76 16	37 40	2 56					
Transportation	43 51	187 24	91 44	6 30					
Totals	9496 69	40246 22	20084 36	1376 28					

	SCHOOL DISTRICT NO.	LOCAL 1 MILL.	SPECIAL	STATE LOAN	Supplemental	e.o.	B+J	BLL	TOTALS
MARCH SETTLEMENT	School District No.								
	119A		116 88		201 66	24 68	4 75	49 36	397 53
	119AA		1620 35		3889 42	170 05	34 14	340 12	3544 08
Totals			1727 23		1891 08	194 73	39 09	389 48	3941 61
JUNE SETTLEMENT	School District No.								
	119A		1700 39		2934 19	357 12	72 10	718 24	5784 04
	119AA		4533 00		3911 07	478 68	76 10	957 37	7976 22
Totals			6233 39		6845 26	837 80	168 20	1675 61	15760 26
NOVEMBER SETTLEMENT	School District No.								
	119A		531 20		916 64	112 14	25 52	20 438	1806 93
	119AA		2833 37		2444 63	299 20	6 007	598 41	6235 68
Totals			3364 57		3361 27	411 39	82 59	822 79	8042 61
NOVEMBER to JANUARY	School District No.								
	119A		36 69		63 31	7 75	1 56	15 50	124 81
	119AA		192 52		166 97	20 44	1 410	40 57	425 90
Totals			230 21		230 28	28 19	5 66	56 37	550 71
ADDITIONS	School District No.								
	Totals								
REDUCTIONS	School District No.								
	Totals								

14-31 Real Estate



























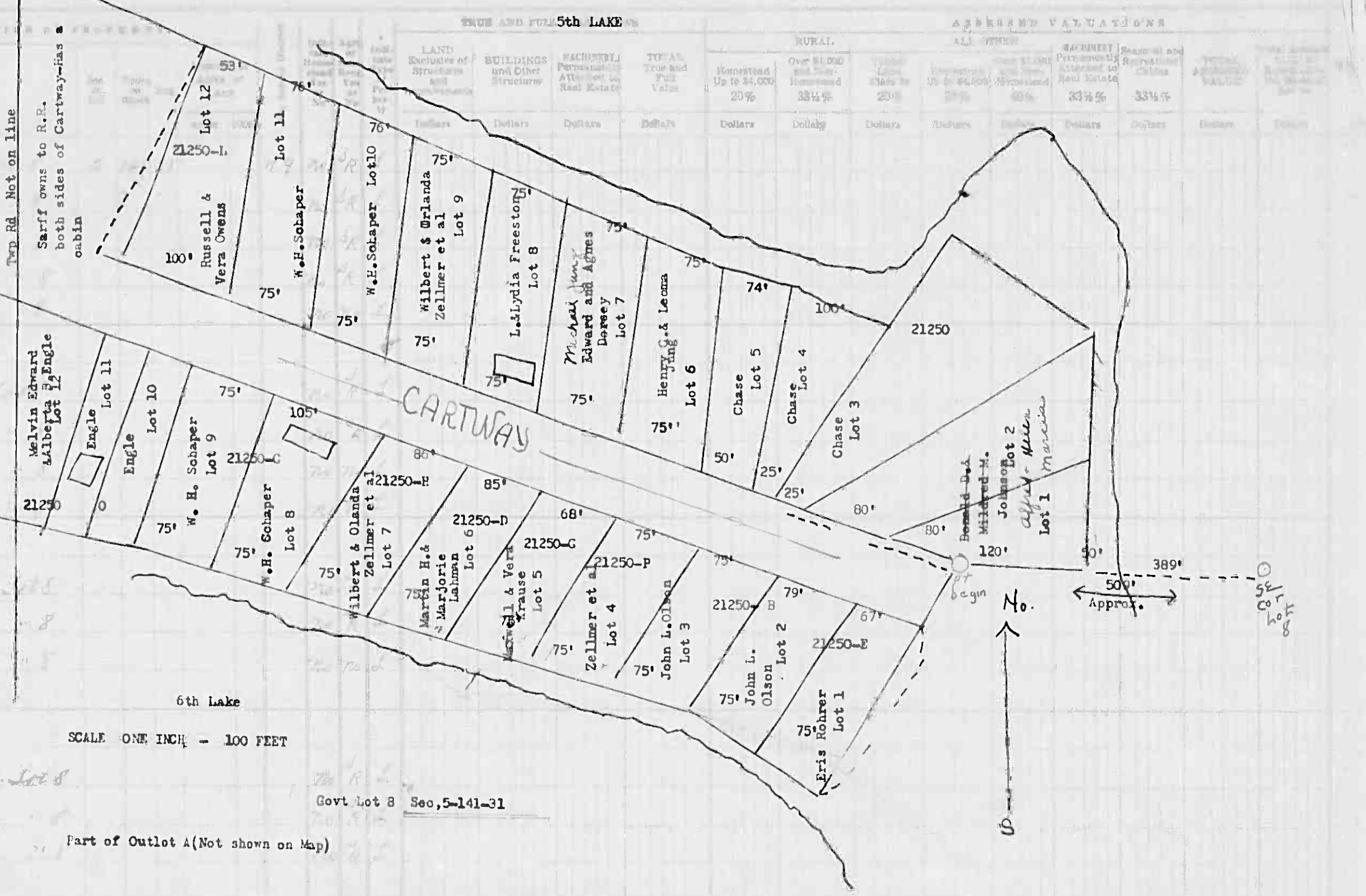




Form 50 MILLER-DAVIS CO. MINNEAPOLIS

IN WHOSE NAME ASSESSED

John L. Olson  
 W. H. Schaper  
 Melvin Edward + Alberta Engle  
 Jimmy M. + Gladys Krause  
 Eric Kohrer  
 Maxwell A. + Vera Lorraine Krause  
 Alfred + Helen Franck  
 Joshua Todd + Violet Glee Sautbline  
 Lawrence M. + Lydia May Crestone  
 Wilbert + Orlando Zellmer + Leo + Melinda Rein  
 Michael Jung  
 J. L. + Violet G. Sautbline  
 Russell E. + Vera M. Ovensal  
 Henry Jo + Leona Jo Jung



AL IZEL UE

SOLD FOR TAXES	VALUATIONS BY SCHOOL DISTRICTS AS EQUALIZED BY DEPARTMENT OF TAXATION						Tax Including State Homestead	State Tax on Non-Homestead	SPECIAL TAXES	SPECIAL TAXES	TOTAL TAXES	PAID	WHEN PAID	Number of Receipt	March Settlement 1964	June Settlement 1964	Penalty	November Settlement 1964	Penalty	Collections to First Monday in January 1965	Penalty	Delinquent on First Monday in January 1965	Total Delinquent Tax and Penalty	REMARKS
	District No.	District No.	District No.	District No.	District No.	District No.																		
1	155						36.12	1.38			37.50	1	PAID IN FULL	OCT 29 1964	19977		37.50	1.31					13686	
2	490						114.22	4.38			118.60	2	PAID IN FULL	MAY 29 1964	15698		118.60						13687	
3	135						31.46	1.20			32.66	3	PAID IN FULL	MAY 29 1964	15778		32.66						13683	
4	125						29.14	1.12			30.26	4	PAID IN FULL	APR 2 1964	7243		30.26						13692	
5	HOLD FOR TAXES					26	6.72	.24			6.96	5	PAID IN FULL	DR # 36864	1-22-65								13692	
6												6											13229	
7	H 75						17.48				17.48	7	PAID IN FULL	APR 2 1964	7242		17.48						13687	
8	184						42.88	1.64			44.52	8	PAID IN FULL	MAY 1 2 1964	7537		44.52						13687	
9						24	6.20	.22			6.42	9	PAID IN FULL	MAY 5 1964	7048		6.42						13684	
10	188						43.82	1.68			45.50	10	PAID IN FULL	MAY 1 8 1964	11221		45.50						13684	
11												11											13682	
12	135						31.46	1.20			32.66	12	PAID IN FULL	MAY 2 6 1964			32.66						13682	
13	26						6.06	.24			6.30	13	PAID IN FULL	MAY 3 8 1964	11791		6.30						13682	
14												14											13677	
15						26	6.72	.24			6.96	15	PAID IN FULL	MAY 5 1964	7071		6.96						13687	
16												16											13687	
17	141						32.86	1.26			34.12	17	PAID IN FULL	MAY 5 1964	7048		34.12						13687	
18	33						7.70	.30			8.00	18	PAID IN FULL	MAY 1 5 1964	7821		8.00						13687	
19	26						6.06	.24			6.30	19	PAID IN FULL	MAY 5 1964	7090		6.30						13689	
20												20											13689	
	H 45						399.26				399.26												13689	
	638						196.4	1.534			434.24												13689	
	1713						418.90				418.90												13689	

SCALE ONE INCH = 100 FEET

Govt Lot 8 Sec. 5-141-31

Part of Outlet A (Not shown on Map)



























































Assessment Roll and Tax List of Real Property in the Town of Spring Lake

\* Indicate Type of Property: R-Residential, C-Commercial, I-Industrial, U-Utility, F-Farm, L-Lakeshore, T-Timber, M-Mineral

Form 50 MILLER-DAVIS CO., MINNEAPOLIS

14-31 Real Estate

Table with columns: IN WHOSE NAME ASSESSED, DESCRIPTION OF PROPERTY, TREE AND FULL VALUATIONS, ASSESSED VALUATIONS, and FINAL EQUALIZED VALUE.

Cass County, Minnesota, for Taxes for the Year 1963.

Table with columns: VALUATIONS BY SCHOOL DISTRICTS AS EQUALIZED BY DEPARTMENT OF TAXATION, TAXES, PAID, WHEN PAID, and REMARKS.

14-31 Sun-Isle Beach Spring Lake Island Chippewa Point Park Springs







Assessment Roll and Tax List of Real Property in the Town of Spring Lake

\* Indicate Type of Property: R-Residential, C-Commercial, I-Industrial, U-Utility, F-Farm, L-Lakeshore, T-Timber, M-Mineral

Form 50 MILLER-DAVIS CO., MINNEAPOLIS

Table with columns: IN WHOSE NAME ASSESSED, SUBDIVISION, No. School District, Indicate Homestead, Agri. or Forest, Indicate Type of Property, TRUE AND FULL VALUATIONS (LAND, BUILDINGS, MACHINERY, TOTAL), ASSESSED VALUATIONS (RURAL, ALL OTHER, MACHINERY, Seasonal and Recreational Cabins, TOTAL ASSESSED VALUE, Total Assessed Value as Equalized by the Board of Review), FINAL EQUALIZED VALUE.

Cass County, Minnesota, for Taxes for the Year 1963.

Table with columns: SOLD FOR TAXES, VALUATIONS BY SCHOOL DISTRICTS AS EQUALIZED BY DEPARTMENT OF TAXATION, Tax including State Homestead, State Tax on Non-Homestead, SPECIAL TAXES, TOTAL TAXES, PAID, WHEN PAID, Number of Receipt, March Settlement 1964, June Settlement 1964, Penalty, November Settlement 1964, Penalty, Collections to First Monday in January 1965, Penalty, Delinquent on First Monday in January 1965, Total Delinquent Tax and Penalty, REMARKS.

Real Estate

14-31

14-31

Map of Cass County, Minnesota, showing various locations: Spring Lake, Island, Chippewa Point, and others.







Assessment Roll and Tax List of Real Property in the Town of Sunnyside

\* Indicate Type of Property: R-Residential, C-Commercial, I-Industrial, U-Utility, F-Farm, L-Lakeshore, T-Timber, M-Mineral

Cass County, Minnesota, for Taxes for the Year 1963.

Table with columns for Description of Property, True and Full Valuations, Assessed Valuations, Valuations by School Districts, and Tax Information. Includes entries for Nels D. Olson and Basil Hofner.



Assessment Roll and Tax List of Real Property in the Town of Stungobee, Cass County, Minnesota, for Taxes for the Year 1963.

Form 50 MILLER-DAVIS CO., MINNEAPOLIS

\* Indicate Type of Property: R-Residential, C-Commercial, I-Industrial, U-Utility, F-Farm, L-Lakeshore, T-Timber, M-Mineral

Table with columns: IN WHOSE NAME ASSESSED, DESCRIPTION OF PROPERTY, TRUE AND FULL VALUATIONS, ASSESSED VALUATIONS, VALUATIONS BY SCHOOL DISTRICTS AS EQUALIZED BY DEPARTMENT OF TAXATION, TAXES, PAID, WHEN PAID, Number of Receipt, March Settlement 1964, June Settlement 1964, November Settlement 1964, Penalty, Collections to First Monday in January 1965, Delinquent on First Monday in January 1965, Total Delinquent Tax and Penalty, REMARKS.

14-31 Real Estate

14-31 Real Estate











Assessment Roll and Tax List of Real Property in the Town of Spring Lake

\* Indicate Type of Property: R-Residential, C-Commercial, I-Industrial, U-Utility, F-Farm, L-Lakeshore, T-Timber, M-Mineral

Form 30 MILLER-DAVIS CO., MINNEAPOLIS

Table with columns: IN WHOSE NAME ASSESSED, DESCRIPTION OF PROPERTY, TRUE AND FULL VALUATIONS, ASSESSED VALUATIONS, and FINAL EQUALIZED VALUE.

(Cont. next page)

Cass County, Minnesota, for Taxes for the Year 1963.

Table with columns: VALUATIONS BY SCHOOL DISTRICTS AS EQUALIZED BY DEPARTMENT OF TAXATION, TAX INCLUDING STATE HOMESTEAD, SPECIAL TAXES, TOTAL TAXES, PAID, WHEN PAID, Number of Receipt, March Settlement, June Settlement, November Settlement, Collections to First Monday in January 1965, Delinquent on First Monday in January 1965, Total Delinquent Tax and Penalty, and REMARKS.

Vertical text on the right edge of the page, including '14-31 Real Estate' and '14-31'.



Assessment Roll and Tax List of Real Property in the Town of Sturgeon

\* Indicate Type of Property: R-Residential, C-Commercial, I-Industrial, U-Utility, F-Farm, L-Lakeshore, T-Timber, M-Mineral

Cass County, Minnesota, for Taxes for the Year 1963.

Form 30 MILLER-DAVIS CO. MINNEAPOLIS

Table with columns: IN WHOSE NAME ASSESSED, DESCRIPTION OF PROPERTY, TRUE AND FULL VALUATIONS, ASSESSED VALUATIONS, VALUATIONS BY SCHOOL DISTRICTS AS EQUALIZED BY DEPARTMENT OF TAXATION, Tax including State Homestead, State Tax on Non-Homestead, SPECIAL TAXES, TOTAL TAXES, PAID, WHEN PAID, Number of Receipt, March Settlement 1964, June Settlement 1964, November Settlement 1964, Collections to First Monday in January 1965, Delinquent on First Monday in January 1965, Total Delinquent Tax and Penalty, REMARKS.

(Cont. next page)

14-31 Real Estate, Sun-Isle Beach, SHIMMERS ISLAND, CHIPPEWA POINT, MA SPRINGS, DUTYWAY, N-3-POKE



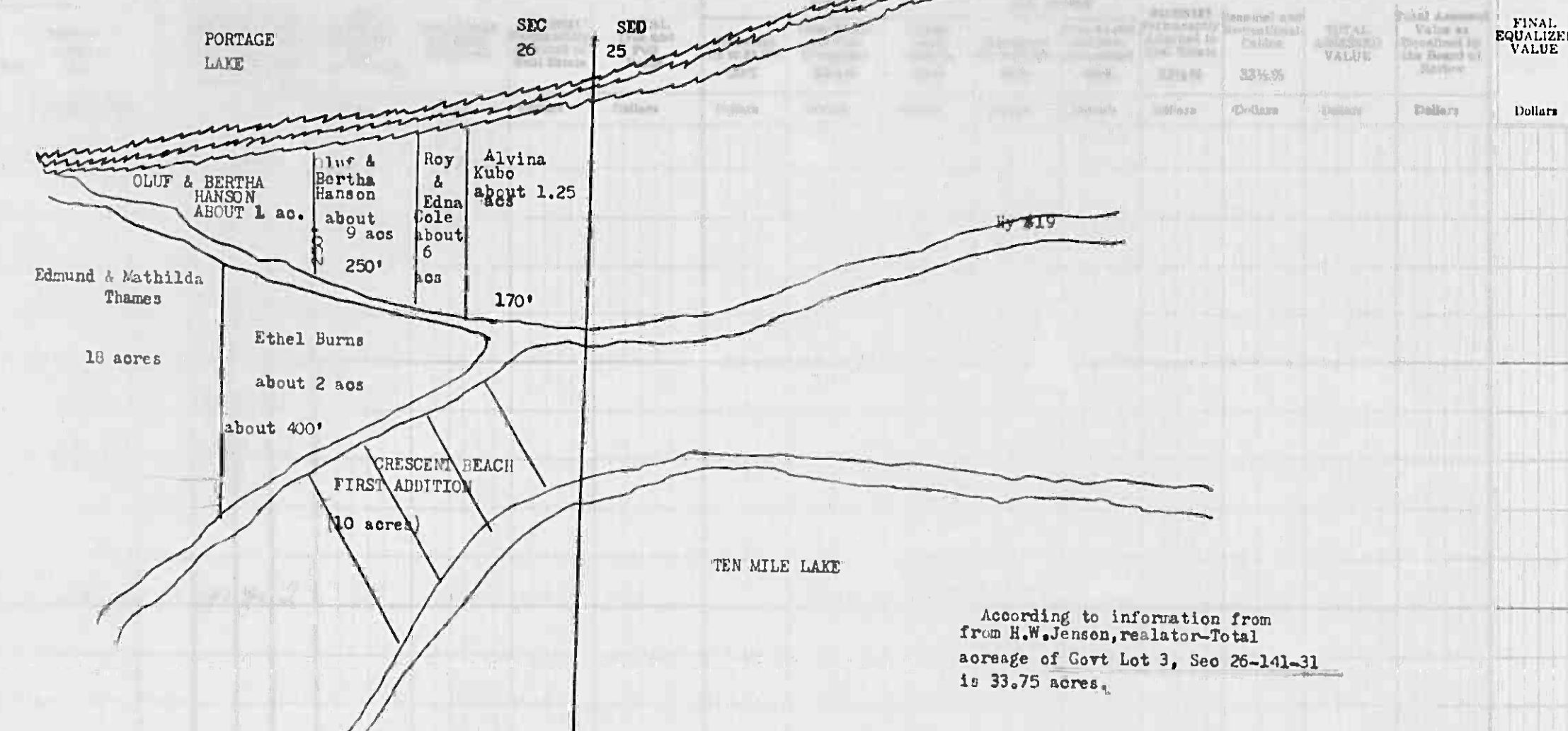




Form 50 MILLER-DAVIS CO., MINNEAPOLIS

DESCRIPTION OF PROPERTY

IN WHOSE NAME ASSESSED	SUBDIVISION	Sec. or Lot	DESCRIPTION OF PROPERTY	FINAL EQUALIZED VALUE
Elizabeth S. & Hubert W. Lee	NE 1/4 of NE 1/4	26	Portage Lake	
Elizabeth S. & Hubert W. Lee	NW 1/4 of NE 1/4	3rd Lot 1		
Elizabeth S. & Hubert W. Lee	SW 1/4 of NE 1/4	3rd Lot 2		
Louis K. Krogstad	NE 1/4 of NW 1/4			
State of Minnesota	NW 1/4 of NW 1/4			
State of Minnesota	SE 1/4 of NW 1/4			
Edmund & Mathilda Thames	18 acres			
U. S. of America	NE 1/4 of SW 1/4			
U. S. of America	NW 1/4 of SW 1/4			
U. S. of America	SW 1/4 of SW 1/4			
U. S. of America	SE 1/4 of SW 1/4			
Cluf & Bertha Hanson	W. 250' of E. 420' of 3rd Lot 3			
Alvina Kubo	SW 1/4 of SE 1/4			
Clarence & Radie Elmerston	SW 1/4 of SE 1/4			
Roy & Edna E. Cole	SE 1/4 of SE 1/4			



According to information from H.W. Jensen, realtor - Total acreage of Govt Lot 3, Sec 26-141-31 is 33.75 acres.

Ownerships checked 9/26/62

25944

SOLD FOR TAXES	VALUATIONS BY SCHOOL DISTRICTS AS EQUALIZED BY DEPARTMENT OF TAXATION						Tax Including State Homestead	State Tax on Non-Homestead	SPECIAL TAXES	SPECIAL TAXES	TOTAL TAXES	PAID	WHEN PAID	Number of Receipt	March Settlement 1964	June Settlement 1964	Penalty	November Settlement 1964	Penalty	Collections to First Monday in January 1965	Penalty	Delinquent on First Monday in January 1965	Total Delinquent Tax and Penalty	REMARKS
	District No.	District No.	District No.	District No.	District No.	District No.																		
1							126	2936	112		3048	HALF PAID OCT 31 1964	20169									17693	13465	
2												HALF PAID MAY 27 1964	11950		1524		1524							
3							135	3146	120		3266	Balance Paid OCT 31 1964	20169									17693	13465	
4												Part Paid MAY 27 1964	11950		1710		1556							
5																								
6							104	2424	92		2516	Balance Paid OCT 30 1964	20091									17685	13434	
7							104	2424	92		2516	Balance Paid OCT 30 1964	20091		500		4532							
8																								
9																								
10							490	490			490	PAID IN FULL FEB 5 1964	517	490									13286	
11																								
12																								
13																								
14																								
15							347	8956			8956	2nd HALF PAID SEP 28 1964	17981									17696	13466	
16							10	234	08		242	1st HALF PAID MAY 20 1964	10144		4478		4478						13440	
17																								
18							90	2322	80		2402	2nd HALF PAID JUL 1 1964	20129									17695	13337	
19												1st HALF PAID MAY 29 1964	13302		1201		1201							
20							334	7786	298		8084	2nd HALF PAID OCT 30 1964	20202									17694	13468	
							813	19440	802		31520	1st HALF PAID MAY 20 1964	11455		4042		4042							
							834	11275	1802						490	13621		17333						

14-31 Real Estate  
 14-31  
 State of Minnesota  
 Cass County  
 Assessor's Office  
 1963































Form 50 MILLER-DAVIS CO., MINNEAPOLIS \* Indicate Type of Property: R-Residential, C-Commercial, I-Industrial, U-Utility, F-Farm, L-Lakeshore, T-Timber, M-Mineral

Table with columns: IN WHOSE NAME ASSESSED, DESCRIPTION OF PROPERTY, TRUE AND FULL VALUATIONS, ASSESSED VALUATIONS, FINAL EQUALIZED VALUE. Includes rows for U.S. of America, Builders Holding Co., Mary Louise Hombach, Helen L. Wyatt, Arnold Nelson, Hazelton & Ragna S. Ellsworth, Joe W. Jung, Earl & L. Pauline Bagertson, Hazelton & Ragna S. Ellsworth.

Table with columns: VALUATIONS BY SCHOOL DISTRICTS AS EQUALIZED BY DEPARTMENT OF TAXATION, Tax Including State Homestead, State Tax on Non-Homestead, SPECIAL TAXES, TOTAL TAXES, PAID, WHEN PAID, Number of Receipt, March Settlement, June Settlement, November Settlement, Collections to First Monday in January 1965, Delinquent on First Monday in January 1965, Total Delinquent Tax and Penalty, REMARKS. Includes handwritten notes like 'PAID IN FULL DEC 29 1964' and 'MAY 29 1964'.

Vertical text on the right edge of the page, including '14-31 Real Estate' and 'Sunrise Beach'.























Assessment Roll and Tax List of Real Property in the Town of Sturgeon

\* Indicate Type of Property: R-Residential, C-Commercial, Industrial, U-Utility, F-Farm, L-Lakeshore, T-Timber, M-Mineral

Cass County, Minnesota, for Taxes for the Year 1963.

Form 5C MILLER-DAVIS CO., MINNEAPOLIS

Table with columns: IN WHOSE NAME ASSESSED, DESCRIPTION OF PROPERTY, TRUE AND FULL VALUATIONS, ASSESSED VALUATIONS, VALUATIONS BY SCHOOL DISTRICTS AS EQUALIZED BY DEPARTMENT OF TAXATION, TAX INCLUDING STATE HOMESTEAD, SPECIAL TAXES, TOTAL TAXES, PAID, WHEN PAID, Number of Receipt, March Settlement 1964, June Settlement 1964, November Settlement 1964, Collections to First Monday in January 1965, Delinquent on First Monday in January 1965, Total Delinquent Tax and Penalty, REMARKS.

IN WHOSE NAME ASSESSED: Theodore + Helen S. Koldere, Paul + Dorothy Kreuger, George Ewen, Theodore Koldere, Jean Johnson, et al, Lloyd + Mildred Sundin, Lucretia + Henrietta Kreuger, Roy + Nina Kreuger, Jean Johnson, et al, Lloyd + Mildred E. Sundin

DESCRIPTION OF PROPERTY: Lot 1 - Platted Park Point, 50' x 250' of East Lot 4, East Lot 2 less sold, East Lot 3, Part of East Lot 4, 200' x 250' of East Lot 4, 350' on lake x 250' East Lot 4, Part of East Lot 2, Part of East Lot 4, Part of East Lot 4 less sold

TRUE AND FULL VALUATIONS: LAND, BUILDINGS, MACHINERY, TOTAL, RURAL, ALL OTHER, MACHINERY, Seasonal and Recreational Cabins, TOTAL ASSESSED VALUE, Total Assessed Value as Equalized by the Board of Review, FINAL EQUALIZED VALUE

VALUATIONS BY SCHOOL DISTRICTS AS EQUALIZED BY DEPARTMENT OF TAXATION: District No., District No., District No., District No., District No., District No., Tax including State Homestead, SPECIAL TAXES, TOTAL TAXES, PAID, WHEN PAID, Number of Receipt, March Settlement 1964, June Settlement 1964, November Settlement 1964, Collections to First Monday in January 1965, Delinquent on First Monday in January 1965, Total Delinquent Tax and Penalty, REMARKS

Vertical text on the right edge: 148-31, SUNRISE BEACH, MINNEAPOLIS ISLAND CHIPPWA POINT, MA SPRINGS, MINN.



Assessment Roll and Tax List of Real Property in the Town of Stingobee

\* Indicate Type of Property: R-Residential, C-Commercial, I-Industrial, U-Utility, F-Farm, L-Lakeshore, T-Timber, M-Mineral

Form 5C-MILLER-DAVIS CO., MINNEAPOLIS

Table with columns: IN WHOSE NAME ASSESSED, DESCRIPTION OF PROPERTY, TRUE AND FULL VALUATIONS, ASSESSED VALUATIONS, FINAL EQUALIZED VALUE.

Cass County, Minnesota, for Taxes for the Year 1963.

Table with columns: VALUATIONS BY SCHOOL DISTRICTS AS EQUALIZED BY DEPARTMENT OF TAXATION, Tax including State Homestead, SPECIAL TAXES, TOTAL TAXES, PAID, WHEN PAID, Number of Receipt, March Settlement, June Settlement, November Settlement, Collections to First Monday in January 1965, Delinquent on First Monday in January 1965, Total Delinquent Tax and Penalty, REMARKS.

14-31 Real Estate

PAID'S FIRST ADDN TO CHERRY GLEN BEACH, SURVISE BEACH, MINNEAPOLIS ISLAND CHIPPWA POINT, BVA SPRINGS, CHIPPWA POINT



















Assessment Roll and Tax List of Real Property in the Town of Spring Lake

Cass County, Minnesota, for Taxes for the Year 1963.

Form 50 MILLER-DAVIS COPY MINNEAPOLIS

Table with columns: IN WHOSE NAME ASSESSED, DESCRIPTION OF PROPERTY, TRUE AND FULL VALUATIONS, ASSESSED VALUATIONS, VALUATIONS BY SCHOOL DISTRICTS AS EQUALIZED BY DEPARTMENT OF TAXATION, TAX INCLUDING STATE HOMESTEAD, State Tax on Non-Homestead, SPECIAL TAXES, TOTAL TAXES, PAID, WHEN PAID, Number of Receipt, March Settlement 1964, June Settlement 1964, Penalty, November Settlement 1964, Penalty, Collections to First Monday in January 1965, Penalty, Delinquent on First Monday in January 1965, Total Delinquent Tax and Penalty, REMARKS.



















Assessment Roll and Tax List of Real Property in the Town of Shingobe

Cass County, Minnesota, for Taxes for the Year 1963.

Form 50 - MILLER-DAVIS CO., MINNEAPOLIS

\* Indicate Type of Property: R-Residential, C-Commercial, I-Industrial, U-Utility, F-Farm, L-Lakeshore, T-Timber, M-Mineral

Main table with columns: IN WHOSE NAME ASSESSED, DESCRIPTION OF PROPERTY, TRUE AND FULL VALUATIONS, ASSESSED VALUATIONS, VALUATIONS BY SCHOOL DISTRICTS AS EQUALIZED BY DEPARTMENT OF TAXATION, Tax including State Homestead, State Tax on Non-Homestead, SPECIAL TAXES, TOTAL TAXES, PAID, WHEN PAID, Number of Receipt, March Settlement 1964, June Settlement 1964, Penalty, November Settlement 1964, Penalty, Collections to First Monday in January 1965, Penalty, Delinquent on First Monday in January 1965, Total Delinquent Tax and Penalty, REMARKS.

Cont on next page

121.96

Handwritten summary totals: 4 1973 = 2018, 1778.52, 44.66, 1854.18, 1809.52

Vertical text on the right edge: SHINGOBE ISLAND CHIPPEDA POINT DNA SERIES















Assessment Roll and Tax List of Real Property in the Town of Kingabee

\* Indicate Type of Property: R-Residential, C-Commercial, I-Industrial, U-Utility, F-Farm, L-Lakeshore, T-Timber, M-Mineral

Form 50 (Miller-Davies Co., Minneapolis)

Table with columns: IN WHOSE NAME ASSESSED, DESCRIPTION OF PROPERTY, TRUE AND FULL VALUATIONS, ASSESSED VALUATIONS, and FINAL EQUALIZED VALUE. Includes entries for State of Minnesota, Natalie C. Dean, Leonard Peterson, Ethel L. Peterson, State of Minnesota, and U.S. of America.

Cass County, Minnesota, for Taxes for the Year 1963.

Table with columns: VALUATIONS BY SCHOOL DISTRICTS AS EQUALIZED BY DEPARTMENT OF TAXATION, TAX INCLUDING STATE, SPECIAL TAXES, TOTAL TAXES, PAID, WHEN PAID, and REMARKS. Includes handwritten entries for school districts 107, 150, 191, and 267.

142-31 Real Estate

142-31 Real Estate



























Assessment Roll and Tax List of Real Property in the town of Spring Lake

\* Indicate Type of Property: R-Residential, C-Commercial, I-Industrial, U-Utility, F-Farm, L-Lakeshore, T-Timber, M-Mineral

Cass County, Minnesota, for Taxes for the Year 1963.

Table with columns: IN WHOSE NAME ASSESSED, DESCRIPTION OF PROPERTY, TRUE AND FULL VALUATIONS, ASSESSED VALUATIONS, VALUATIONS BY SCHOOL DISTRICTS AS EQUALIZED BY DEPARTMENT OF TAXATION, Tax Including State Homestead, State Tax on Non-Homestead, SPECIAL TAXES, TOTAL TAXES, PAID, WHEN PAID, Number of Receipt, March Settlement 1964, June Settlement 1964, November Settlement 1964, Collections to First Monday in January 1965, Delinquent on First Monday in January 1965, Total Delinquent Tax and Penalty, REMARKS.

Robert + Helen Radolph

U. S. of America  
State of Minnesota  
U. S. of America  
U. S. of America

U. S. of America  
U. S. of America  
U. S. of America  
U. S. of America

U. S. of America  
U. S. of America  
U. S. of America  
U. S. of America

1329

6052

6052

160

250

5828 224

6052

SHRINE ISLAND CHIPPY POINT BNA SPRINGS COUNTRY



Assessment Roll and Tax List of Real Property in the Town of Springdale

\* Indicate Type of Property: R-Residential, C-Commercial, I-Industrial, U-Utility, F-Farm, L-Lakeshore, T-Timber, M-Mineral

Form 50 MILLER-DAVIS CO., MINNEAPOLIS

Table with columns: IN WHOSE NAME ASSESSED, DESCRIPTION OF PROPERTY, TRUE AND FULL VALUATIONS, ASSESSED VALUATIONS, and FINAL EQUALIZED VALUE.

Cass County, Minnesota, for Taxes for the Year 1963.

Table with columns: VALUATIONS BY SCHOOL DISTRICTS AS EQUALIZED BY DEPARTMENT OF TAXATION, Tax including State Homestead, State Tax on Non-Homestead, SPECIAL TAXES, TOTAL TAXES, PAID, WHEN PAID, Number of Receipt, March Settlement 1964, June Settlement 1964, November Settlement 1964, Collections to First Monday in January 1965, Delinquent on First Monday in January 1965, Total Delinquent Tax and Penalty, and REMARKS.

142-31 Real Estate

142-31 Real Estate, Springdale Beach, Springdale Island, Chippewa Point, Elm Springs, Chippewa







Assessment Roll and Tax List of Real Property in the Town of Shingobe

\* Indicate Type of Property: R-Residential, C-Commercial, I-Industrial, U-Utility, F-Farm, L-Lakeshore, T-Timber, M-Mineral

Form 50 MILLER-DAVIS CO., MINNEAPOLIS

Table with columns: N WHOSE NAME ASSESSED, DESCRIPTION OF PROPERTY, TRUE AND FULL VALUATIONS, ASSESSED VALUATIONS, FINAL EQUALIZED VALUE. Includes handwritten entries for Lewis A. + Nellie S. Becker, L. A. Becker, John Hanson, Village of Walker, C. G. + Vera L. Ayars, E. Harold + Sylvia J. Johnson, John W. + Annabel S. Swimmelle, Earl E. + Dorothy E. Walters, Harold H. + Satchel A. Anders, Mendel W. + Agnes C. Anders, Carl E. + Dorothy E. Walters.

Cass County, Minnesota, for Taxes for the Year 1963.

Table with columns: VALUATIONS BY SCHOOL DISTRICTS AS EQUALIZED BY DEPARTMENT OF TAXATION, Tax including State Homestead, State Tax on Non-Homestead, SPECIAL TAXES, TOTAL TAXES, PAID, WHEN PAID, Number of Receipt, March Settlement 1964, June Settlement 1964, November Settlement 1964, Collections to First Monday in January 1965, Delinquent on First Monday in January 1965, Total Delinquent Tax and Penalty, REMARKS. Includes handwritten entries for 1st and 2nd half payments and full payments.

142-31 Real Estate

142-31 Real Estate







Assessment Roll and Tax List of Real Property in the Town of Shingoke

\* Indicate Type of Property: R-Residential, C-Commercial, I-Industrial, U-Utility, F-Farm, L-Lakeshore, T-Timber, M-Mineral

Table with columns: IN WHOSE NAME ASSESSED, DESCRIPTION OF PROPERTY, TRUE AND FULL VALUATIONS, ASSESSED VALUATIONS, and FINAL EQUALIZED VALUE. Includes entries for Edward Howard Muesel, Arthur A. + Alpha O. Larson, etc.

Cass County, Minnesota, for Taxes for the Year 1963.

Table with columns: SOLD FOR TAXES, VALUATIONS BY SCHOOL DISTRICTS AS EQUALIZED BY DEPARTMENT OF TAXATION, Tax Including State Homestead, SPECIAL TAXES, TOTAL TAXES, PAID, WHEN PAID, Number of Receipt, March Settlement, June Settlement, November Settlement, Collections to First Monday in January 1965, Delinquent on First Monday in January 1965, Total Delinquent Tax and Penalty, REMARKS. Includes entries for 1 PAID IN FULL JAN 10 1964, 2 PAID IN FULL DEC 30 1964, etc.







Assessment Roll and Tax List of Real Property in the Town of Sturgeon, Minnesota

\* Indicate Type of Property: R-Residential, C-Commercial, I-Industrial, U-Utility, F-Farm, L-Lakeshore, T-Timber, M-Mineral

Form 6-C - MILLER-DAVIS CO., MINNEAPOLIS

Table with columns: WHOSE NAME ASSESSED, DESCRIPTION OF PROPERTY, TRUE AND FULL VALUATIONS, ASSESSED VALUATIONS, and FINAL EQUALIZED VALUE. Includes entries for Earl E. Peterson and U.S. of America.

2550

Cass County, Minnesota, for Taxes for the Year 1963.

Table with columns: VALUATIONS BY SCHOOL DISTRICTS AS EQUALIZED BY DEPARTMENT OF TAXATION, TAX INCLUDING STATE HOMESTEAD, SPECIAL TAXES, TOTAL TAXES, PAID, WHEN PAID, and various settlement/penalty columns. Includes handwritten entries for 188, 4852, 168, 5020, and 5020.

188

4852 168

5020

5020

13675

PAUL'S FIRST ADDY TO CHURCH CUMBER BEACH SURFISE BEACH SUTHERS ISLAND CHIPPWA POINT BVA SPRINGS QUINCY







Assessment Roll and Tax List of Real Property in the Town of Shingobe

\* Indicate Type of Property: R-Residential, C-Commercial, I-Industrial, U-Utility, F-Farm, L-Lakeshore, T-Timber, M-Mineral

Form 50 - MILLER-DAVIS CO. MINNEAPOLIS

Table with columns: IN WHOSE NAME ASSESSED, DESCRIPTION OF PROPERTY, TRUE AND FULL VALUATIONS, ASSESSED VALUATIONS, and FINAL EQUALIZED VALUE.

Cass County, Minnesota, for Taxes for the Year 1963.

Table with columns: VALUATIONS BY SCHOOL DISTRICTS AS EQUALIZED BY DEPARTMENT OF TAXATION, Tax Including State, State Tax on Non-Homestead, SPECIAL TAXES, TOTAL TAXES, PAID, WHEN PAID, Number of Receipt, March Settlement, June Settlement, November Settlement, Collections to First Monday in January, Delinquent on First Monday in January, Total Delinquent Tax and Penalty, REMARKS.

(cont next page)

Vertical text on the right edge of the page, including 'SHINGOBE ISLAND CHIPPWA POINT SWA SPRINGS'.











Assessment Roll and Tax List of Real Property in the Town of Shingobee

\* Indicate Type of Property: R-Residential, C-Commercial, I-Industrial, U-Utility, F-Farm, L-Lakeshore, T-Timber, M-Mineral

Form 50 MILLS-DAVIS CO., MINNEAPOLIS

Cass County, Minnesota, for Taxes for the Year 1963.

Table with columns for IN WHOSE NAME ASSESSED, DESCRIPTION OF PROPERTY, TRUE AND FULL VALUATIONS, ASSESSED VALUATIONS, VALUATIONS BY SCHOOL DISTRICTS AS EQUALIZED BY DEPARTMENT OF TAXATION, TAXES, PAID, WHEN PAID, Number of Receipt, March Settlement, June Settlement, November Settlement, Collections to First Monday in January, Delinquent on First Monday in January, Total Delinquent Tax and Penalty, REMARKS.























Assessment Roll and Tax List of Real Property in the Town of Stoughton

\* Indicate Type of Property: R-Residential, C-Commercial, I-Industrial, U-Utility, F-Farm, L-Lakeshore, T-Timber, M-Mineral

Form 50 MILLER-DAVIS CO., MINNEAPOLIS

Table with columns: IN WHOSE NAME ASSESSED, DESCRIPTION OF PROPERTY, TRUE AND FULL VALUATIONS, ASSESSED VALUATIONS, and FINAL EQUALIZED VALUE. Includes property details for Leonard A. Gruber, Phillip J. Jewell, and others.

Cass County, Minnesota, for Taxes for the Year 1963.

Table with columns: VALUATIONS BY SCHOOL DISTRICTS AS EQUALIZED BY DEPARTMENT OF TAXATION, TAX INCLUDING STATE, SPECIAL TAXES, TOTAL TAXES, PAID, WHEN PAID, Number of Receipt, March Settlement, June Settlement, November Settlement, Penalty, Collections to First Monday in January 1965, Delinquent on First Monday in January 1965, Total Delinquent Tax and Penalty, REMARKS.

142-31

Vertical text on the right edge of the page, including 'Surprise Beach' and 'Chippewa Point'.



Assessment Roll and Tax List of Real Property in the Town of Springdale

Cass County, Minnesota, for Taxes for the Year 1963.

Form 50 MILLER-DAVIS CO., MINNEAPOLIS \* Indicate Type of Property: R-Residential, C-Commercial, I-Industrial, U-Utility, F-Farm, L-Lakeshore, T-Timber, M-Mineral

Table with columns: IN WHOSE NAME ASSESSED, DESCRIPTION OF PROPERTY, TRUE AND FULL VALUATIONS, ASSESSED VALUATIONS, and FINAL EQUALIZED VALUE. Includes entries for Bert L. John L. + Andrew L. Johnson and E. W. Stanley.

Table with columns: VALUATIONS BY SCHOOL DISTRICTS AS EQUALIZED BY DEPARTMENT OF TAXATION, TAX INCLUDING STATE HOMESTEAD, STATE TAX ON NON-HOMESTEAD, SPECIAL TAXES, TOTAL TAXES, PAID, WHEN PAID, Number of Receipt, March Settlement 1964, June Settlement 1964, November Settlement 1964, Collections to First Monday in January 1965, Delinquent on First Monday in January 1965, Total Delinquent Tax and Penalty, REMARKS. Includes entries for school districts 1 through 20.

142-31

SPRINGDALE ISLAND CHIPPEWA POINT GWA SPRINGS JIMMY



Assessment Roll and Tax List of Real Property in the Town of Stingobee

\* Indicate Type of Property: R-Residential, C-Commercial, I-Industrial, U-Utility, F-Farm, L-Lakeshore, T-Timber, M-Mineral

Form 50 - MILLER-DAVIS CO., MINNEAPOLIS

Table with columns: IN WHOSE NAME ASSESSED, DESCRIPTION OF PROPERTY, TRUE AND FULL VALUATIONS, ASSESSED VALUATIONS, FINAL EQUALIZED VALUE. Includes handwritten entries for property owners like 'Jianna Country Club' and 'Arthur A. Schaff, Jr.'.

Cass County, Minnesota, for Taxes for the Year 1963.

Table with columns: VALUATIONS BY SCHOOL DISTRICTS AS EQUALIZED BY DEPARTMENT OF TAXATION, TAX INCLUDING STATE HOMESTEAD, SPECIAL TAXES, TOTAL TAXES, PAID, WHEN PAID, Number of Receipt, March Settlement, June Settlement, November Settlement, Collections to First Monday in January 1965, Delinquent on First Monday in January 1965, Total Delinquent Tax and Penalty, REMARKS. Includes handwritten notes on tax payments and penalties.

142-31

CHIFFINIA POINT, MINNEAPOLIS, MINN. 55405



























Assessment Roll and Tax List of Real Property in the Town of Shingobe

Cass County, Minnesota, for Taxes for the Year 1963.

Form 5C MILLER-DAVIS CO., MINNEAPOLIS \* Indicate Type of Property: R-Residential, C-Commercial, I-Industrial, U-Utility, F-Farm, L-Lakeshore, T-Timber, M-Mineral

Table with columns: IN WHOSE NAME ASSESSED, DESCRIPTION OF PROPERTY, TRUE AND FULL VALUATIONS, ASSESSED VALUATIONS, and FINAL EQUALIZED VALUE. Includes handwritten entries for property owners like Fred + Jane Suggitt and Simon H. + Nagney Simonson.

Table with columns: VALUATIONS BY SCHOOL DISTRICTS AS EQUALIZED BY DEPARTMENT OF TAXATION, TAX INCLUDING STATE HOMESTEAD, SPECIAL TAXES, TOTAL TAXES, PAID, WHEN PAID, and REMARKS. Includes handwritten entries for payment dates and amounts.

SHINGOBE ISLAND LAKESIDE BEACH

SHINGOBE ISLAND LAKESIDE BEACH, CHIPPWA POINT, MINNAPRINGS, ALMAY, JOHN'S POINT











Assessment Roll and Tax List of Real Property in the Town of Shingobee

Cass County, Minnesota, for Taxes for the Year 1963.

Form 5C-MILLEN-DAY CO., MINNEAPOLIS

\* Indicate Type of Property: R-Residential, C-Commercial, I-Industrial, U-Utility, F-Farm, L-Lakeshore, T-Timber, M-Mineral

Table with columns: IN WHOSE NAME ASSESSED, DESCRIPTION OF PROPERTY, TRUE AND FULL VALUATIONS, ASSESSED VALUATIONS, VALUATIONS BY SCHOOL DISTRICTS AS EQUALIZED BY DEPARTMENT OF TAXATION, TAXES, PAID, WHEN PAID, Number of Receipt, March Settlement 1964, June Settlement 1964, November Settlement 1964, Collections to First Monday in January 1965, Delinquent on First Monday in January 1965, Total Delinquent Tax and Penalty, REMARKS.

SHINGOBBE ISLAND MARSH BEACH

SHINGOBBE ISLAND MARSH BEACH, CHIPPEWA POINT, MINNAPRINGS, CHIPPEWA POINT



Assessment Roll and Tax List of Real Property in the Town of Shingobee

\* Indicate Type of Property: R-Residential, C-Commercial, I-Industrial, U-Utility, F-Farm, L-Lakeshore, T-Timber, M-Mineral

Cass County, Minnesota, for Taxes for the Year 1963.

Table with columns: IN WHOSE NAME ASSESSED, DESCRIPTION OF PROPERTY, TRUE AND FULL VALUATIONS, ASSESSED VALUATIONS, VALUATIONS BY SCHOOL DISTRICTS AS EQUALIZED BY DEPARTMENT OF TAXATION, TAX INCLUDING STATE HOMESTEAD, SPECIAL TAXES, TOTAL TAXES, PAID, WHEN PAID, Number of Receipt, March Settlement 1964, June Settlement 1964, November Settlement 1964, Penalty, Collections to First Monday in January 1965, Delinquent on First Monday in January 1965, Total Delinquent Tax and Penalty, REMARKS.

CHIPEWA POINT SHINGOBE ISLAND MARISE BEACH

CHIPEWA POINT SHINGOBE ISLAND MARISE BEACH















Assessment Roll and Tax List of Real Property in the Town of Shingobee

\* Indicate Type of Property: R-Residential, C-Commercial, I-Industrial, U-Utility, F-Farm, L-Lakeshore, T-Timber, M-Mineral

Form 5C MILLENBROS CO., MINNEAPOLIS

Cass County, Minnesota, for Taxes for the Year 1963.

Table with columns: IN WHOSE NAME ASSESSED, DESCRIPTION OF PROPERTY, TRUE AND FULL VALUATIONS, ASSESSED VALUATIONS, and FINAL EQUALIZED VALUE.

Table with columns: VALUATIONS BY SCHOOL DISTRICTS AS EQUALIZED BY DEPARTMENT OF TAXATION, TAXES (SPECIAL, TOTAL), PAID, WHEN PAID, and REMARKS.

SHINGOBE ISLAND 1st BEACH, SHINGOBE ISLAND 2nd BEACH, SHINGOBE ISLAND 3rd BEACH, SHINGOBE ISLAND 4th BEACH, SHINGOBE ISLAND 5th BEACH, SHINGOBE ISLAND 6th BEACH, SHINGOBE ISLAND 7th BEACH, SHINGOBE ISLAND 8th BEACH, SHINGOBE ISLAND 9th BEACH, SHINGOBE ISLAND 10th BEACH, SHINGOBE ISLAND 11th BEACH, SHINGOBE ISLAND 12th BEACH, SHINGOBE ISLAND 13th BEACH, SHINGOBE ISLAND 14th BEACH, SHINGOBE ISLAND 15th BEACH, SHINGOBE ISLAND 16th BEACH, SHINGOBE ISLAND 17th BEACH, SHINGOBE ISLAND 18th BEACH, SHINGOBE ISLAND 19th BEACH, SHINGOBE ISLAND 20th BEACH

SHINGOBE ISLAND 1st BEACH, SHINGOBE ISLAND 2nd BEACH, SHINGOBE ISLAND 3rd BEACH, SHINGOBE ISLAND 4th BEACH, SHINGOBE ISLAND 5th BEACH, SHINGOBE ISLAND 6th BEACH, SHINGOBE ISLAND 7th BEACH, SHINGOBE ISLAND 8th BEACH, SHINGOBE ISLAND 9th BEACH, SHINGOBE ISLAND 10th BEACH, SHINGOBE ISLAND 11th BEACH, SHINGOBE ISLAND 12th BEACH, SHINGOBE ISLAND 13th BEACH, SHINGOBE ISLAND 14th BEACH, SHINGOBE ISLAND 15th BEACH, SHINGOBE ISLAND 16th BEACH, SHINGOBE ISLAND 17th BEACH, SHINGOBE ISLAND 18th BEACH, SHINGOBE ISLAND 19th BEACH, SHINGOBE ISLAND 20th BEACH



Assessment Roll and Tax List of Real Property in the Town of Kingobee

\* Indicate Type of Property: R-Residential, C-Commercial, I-Industrial, U-Utility, F-Farm, L-Lakeshore, T-Timber, M-Mineral

143-31  
BALDWIN'S 1st ADD'N TO CITRENE QUARE BEACH  
CITRENE QUARE BEACH  
ISLAMIC 1st BEACH  
SHINGOEE ISLAMIC 1st BEACH  
PEWA FALLS  
OUTWAY

Table with columns: IN WHOSE NAME ASSESSED, DESCRIPTION OF PROPERTY, TRUE AND FULL VALUATIONS, ASSESSED VALUATIONS (RURAL, ALL OTHER), SOLD FOR TAXES, FINAL EQUALIZED VALUE.

Cass County, Minnesota, for Taxes for the Year 1963.

Table with columns: VALUATIONS BY SCHOOL DISTRICTS AS EQUALIZED BY DEPARTMENT OF TAXATION, Tax Including State Homestead, State Tax on Non-Homestead, SPECIAL TAXES, TOTAL TAXES, PAID, WHEN PAID, Number of Receipt, March Settlement 1964, June Settlement 1964, November Settlement 1964, Collections to First Monday in January 1965, Delinquent on First Monday in January 1965, Total Delinquent Tax and Penalty, REMARKS.

SUNSHINE HEIGHTS  
CITRENE QUARE BEACH  
2nd POINT BEACH  
3rd POINT BEACH  
4th POINT BEACH  
5th POINT BEACH  
6th POINT BEACH  
7th POINT BEACH  
8th POINT BEACH  
9th POINT BEACH  
10th POINT BEACH  
11th POINT BEACH  
12th POINT BEACH  
13th POINT BEACH  
14th POINT BEACH  
15th POINT BEACH  
16th POINT BEACH  
17th POINT BEACH  
18th POINT BEACH  
19th POINT BEACH  
20th POINT BEACH











Assessment Roll and Tax List of Real Property in the Town of Spring Lake

\* Indicate Type of Property: R-Residential, C-Commercial, I-Industrial, U-Utility, F-Farm, L-Lakeshore, T-Timber, M-Mineral

Form 5C - MILLER-DAVIS CO., MINNEAPOLIS

Table with columns: IN WHOSE NAME ASSESSED, Breezy Point SUBDIVISION, Lot #, No. School District, Indicate Home-Stead, Indicate Type of Property, TRUE AND FULL VALUATIONS, ASSESSED VALUATIONS (RURAL, ALL OTHER, MACHINERY, Seasonal and Recreational Cabins), TOTAL ASSESSED VALUE, Total Assessed Value as Equalized by the Board of Review, FINAL EQUALIZED VALUE.

Vertical text on the left margin: BALDWIN'S 1st ADD'N TO CHURCH CEMETERY BEACH, CHURCH CEMETERY BEACH, BREEZY POINT, PENA FELL'S SUB, CULDEWAY

Cass County, Minnesota, for Taxes for the Year 1963.

Table with columns: SOLD FOR TAXES, VALUATIONS BY SCHOOL DISTRICTS AS EQUALIZED BY DEPARTMENT OF TAXATION, Tax Including State Homestead, State Tax on Non-Homestead, SPECIAL TAXES, TOTAL TAXES, PAID, WHEN PAID, Number of Receipt, March Settlement 1964, June Settlement 1964, November Settlement 1964, Collections to First Monday in January 1965, Delinquent on First Monday in January 1965, Total Delinquent Tax and Penalty, REMARKS.

Vertical text on the right margin: SHERIFF'S HEIGHTS, BEECH, SHERIFF'S ADD'N TO CHURCH CEMETERY BEACH, SHERIFF'S ADD'N TO CHURCH CEMETERY BEACH, ADDITION, BALDWIN'S 1st ADD'N TO CHURCH CEMETERY BEACH







Assessment Roll and Tax List of Real Property in the Town of Sturgeon, Minnesota

Form 50 MILLER-DAVIS CO., MINNEAPOLIS

Table with columns: IN WHOSE NAME ASSESSED, DESCRIPTION OF PROPERTY, TRUE AND FULL VALUATIONS, ASSESSED VALUATIONS, and FINAL EQUALIZED VALUE. Includes handwritten entries for property owners like John + Jean + Edw. + Elsie.

Cass County, Minnesota, for Taxes for the Year 1963.

Table with columns: VALUATIONS BY SCHOOL DISTRICTS AS EQUALIZED BY DEPARTMENT OF TAXATION, Tax Including State Homestead, State Tax on Non-Homestead, SPECIAL TAXES, TOTAL TAXES, PAID, WHEN PAID, Number of Receipt, March Settlement, June Settlement, November Settlement, Collections to First Monday in January, Delinquent on First Monday in January, Total Delinquent Tax and Penalty, and REMARKS.

Vertical text on the left edge: BALDWIN ADD'N TO GITCHES QUAD BEACH, CHEQUAMEGON BEACH, CRESCENT BEACH, FARM, FABRONA

Vertical text on the right edge: SUNBURN BEACHES, BETHLEHEM BEACH, SQUIRE'S ADD'N TO WALTER CRESCENT BEACH, 5th ADD'N TO CRESCENT BEACH, 1st ADD'N TO FABRONA



























Assessment Roll and Tax List of Real Property in the Town of Springburn, Minnesota

Form 50 MILLER-DAVIS CO., MINNEAPOLIS

Table with columns: IN WHOSE NAME ASSESSED, DESCRIPTION OF PROPERTY, TRUE AND FULL VALUATIONS, ASSESSED VALUATIONS, and FINAL EQUALIZED VALUE. Includes handwritten entries for 'Sunrise Heights' subdivision.

Cass County, Minnesota, for Taxes for the Year 1963.

Table with columns: VALUATIONS BY SCHOOL DISTRICTS AS EQUALIZED BY DEPARTMENT OF TAXATION, TAXES, PAID, WHEN PAID, and REMARKS. Includes handwritten entries for tax amounts and payment dates.

Vertical text on the left edge: SUNRISE HEIGHTS, CHEE BEACH, POLO BEACH, LINT BEACH, CENT BEACH, WA BA NA NE BAY, ADDITION.

Vertical text on the right edge: SHADY LAKE, CHARLIER BEACH, SLOKEY'S ADD'N TO WALKER BE ISLAND, FAIR POINT, LANSON'S POINT.







Assessment Roll and Tax List of Real Property in the Town of Stingobee

Form 50 MILLER-DAVIS CO. MINNEAPOLIS

IN WHOSE NAME ASSESSED	DESCRIPTION OF PROPERTY				No. School District	Indicate Homestead Yes or No	Agricultural Yes or No	Indicate Type of Property	TRUE AND FULL VALUATIONS			ASSESSED VALUATIONS							Total Assessed Value as Equalized by the Board of Review	FINAL EQUALIZED VALUE	
	Sec. or Lot	Town or Block	Ring	Number of Acres of Land					LAND Exclusive of Structures and Improvements	BUILDINGS and Other Structures	MACHINERY Permanently Attached to Real Estate	TOTAL True and Full Value	RURAL			ALL OTHER					
													Homestead Up to \$4,000 20%	Over \$4,000 and Non-Homestead 33 1/3%	Timber Land Class 3e 20%	Homestead Up to \$4,000 25%	Over \$4,000 and Non-Homestead 40%	MACHINERY Permanently Attached to Real Estate 33 1/3%			Seasonal and Recreational Cabins 33 1/3%
Norman James Iverson	1	1	1	1	119	Yes	No	L													
Harland + Geneva E. Slave	2	1		1		Yes	No	J													
Norman James Iverson	3	2		2		Yes	No	R													
"	4	3		3		Yes	No	R													
Silla + Norman Iverson + Jeanette Ness	5	4		4		Yes	No	R													
Lucia H. Petrovski	6	5		5		Yes	No	R													
Floyd + Lucia H. Petrovski	7	6		6		Yes	No	R													
"	8	7		7		Yes	No	R													
"	9	8		8		Yes	No	R													
"	10	9		9		Yes	No	R													
"	11	10		10		Yes	No	R													
Norma Humphrey	12	11		11		No	No	R													
"	13	12		12		No	No	R													
Floyd + Lucia H. Petrovski	14	13		13		Yes	No	R													
Julius O. + Minnie O. Johnson	15	14		14		No	No	R													
Norma C. Humphrey	16	15		15		No	No	R													
Floyd + Lucia H. Petrovski	17	16		16		Yes	No	R													
"	18																				
"	19																				
"	20																				

Cass County, Minnesota, for Taxes for the Year 1963.

SOLD FOR TAXES	VALUATIONS BY SCHOOL DISTRICTS AS EQUALIZED BY DEPARTMENT OF TAXATION						Tax Including State Homestead	State Tax on Non-Homestead	SPECIAL TAXES	SPECIAL TAXES	TOTAL TAXES	PAID	WHEN PAID	Number of Receipt	March Settlement 1964	June Settlement 1964	Penalty	November Settlement 1964	Penalty	Collections to First Monday in January 1965	Penalty	Delinquent on First Monday in January 1965	Total Delinquent Tax and Penalty	REMARKS		
	District No.	District No.	District No.	District No.	District No.	District No.																				
	Rate	Rate	Rate	Rate	Rate	Rate																				
1							464				464	PAID IN FULL	MAY 10 1964	12050												
2							104				104	2nd HALF PAID	OCT 2 1964	19131										13314		
3							1832				1832	1st HALF PAID	MAY 29 1964	15700			52							17749	13602	
4							3098				3098	3rd PAID IN FULL	MAY 10 1964	2050											13314	
5							4646				4646	4th PAID IN FULL	MAY 10 1964	19750												
6							1780				1780	2nd HALF PAID	OCT 28 1964	11990			2323								17635	13315
7							232				232	1st HALF PAID	MAY 7 1964												23316	
8							232				232	2nd HALF PAID	OCT 27 1964													
9							232				232	1st HALF PAID	MAY 7 1964													
10							10014				10014	2nd HALF PAID	OCT 27 1964													
11							232				232	1st HALF PAID	MAY 7 1964													
12							672	24			696	2nd HALF PAID	OCT 2 1964													
13							672	24			696	1st HALF PAID	MAY 8 1964													
14							388				388	2nd HALF PAID	OCT 2 1964													
15							672	24			696	1st HALF PAID	MAY 7 1964													
16							26480	916			27396	PAID IN FULL	MAY 2 1964													
17							388				388	2nd HALF PAID	OCT 2 1964													
18																										
19																										
20																										

10-31 RIC 142-31 SURESE HEIGHTS CHARLTON BEACH SMOKEY'S ADD'N TO WALKER CREST HEIGHTS ADDITION WA BA MA NE RAY

SEADY LANE POINT CHRISTMAS STINGOBBE KNOLL PLAIN STINGOBBE ISLAND BIRCH FOREST S 1st ADD'N TO STINGOBBE ISLAND PINE POINT ANSON'S POINT































Assessment Roll and Tax List of Real Property in the Town of Shingobee

\* Indicate Type of Property: R-Residential, C-Commercial, I-Industrial, U-Utility, F-Farm, L-Lakeshore, T-Timber, M-Mineral

Form 50 MILLER-DAVIS CO., MINNEAPOLIS

DESCRIPTION OF PROPERTY

TRUE AND FULL VALUATIONS

ASSESSED VALUATIONS

Table with columns: IN WHOSE NAME ASSESSED, Shingobee Knoll SUBDIVISION, Part of Lot 6, Sec. 11, 14, 31, Acres, 100ths, No. School District, Indicate Homestead, Agricultural, or Other, Indicate Type of Property, LAND Exclusive of Structures and Improvements, BUILDINGS and Other Structures, MACHINERY Permanently Attached to Real Estate, TOTAL True and Full Value, RURAL (Homestead, Over \$4,000 and Non-Homestead, Timber Land Class 3e), ALL OTHER (Homestead, Over \$4,000 and Non-Homestead, MACHINERY Permanently Attached to Real Estate, Seasonal and Recreational Cabins), TOTAL ASSESSED VALUE, Total Assessed Value as Equalized by the Board of Review, FINAL EQUALIZED VALUE.

Mario Juchow

Cass County, Minnesota, for Taxes for the Year 1963.

Table with columns: SOLID FORT TAXES, VALUATIONS BY SCHOOL DISTRICTS AS EQUALIZED BY DEPARTMENT OF TAXATION (District No., Rate, Mills), Tax Including State Homestead, State Tax on Non-Homestead, SPECIAL TAXES, TOTAL TAXES, PAID, WHEN PAID (Month, Day, Year), Number of Receipt, March Settlement 1964, June Settlement 1964, November Settlement 1964, Collections to First Monday in January 1965, Delinquent on First Monday in January 1965, Total Delinquent Tax and Penalty, REMARKS.

390 100.62 338 104.00

104.00

PLAT OF BIRCH ACRES

Personal







