

ASSESSMENT & TAX LIST - 1960

Shingobee

>Returns Showing Grain Received in or Handled by Elevators, Warehouses and Mills in the _____ of _____ in the
 County of _____ for the Year Ending May 1, 1960.

INDEX TO SECTIONS

SECTION	PAGE
Sec. 1	
" 2	
" 3	
" 4	
" 5	
" 6	
" 7	
" 8	
" 9	
" 10	
" 11	
" 12	
" 13	
" 14	
" 15	
" 16	
" 17	
" 18	
" 19	
" 20	
" 21	
" 22	
" 23	
" 24	
" 25	
" 26	
" 27	
" 28	
" 29	
" 30	
" 31	
" 32	
" 33	
" 34	
" 35	
" 36	

For Convenience of Auditor in Showing Boundaries of School Districts

Township No. 141-142 Range No. 31 Mer. P. M.

NAMES OF OWNERS	ADDRESS	Bushels of Wheat	Bushels of Soy Beans	Bushels of Flax	Total No. of Bushels of Wheat, Soy Beans and Flax	★ Tax of 1/2 Mill per Bushel		Bushels of Corn	Bushels of Barley	Bushels of Rye	Bushels of Oats	Bushels of Buckwheat	Bushels of all Other Grains	Total No. Bushels Corn, Barley, Rye, Oats, Buckwheat and all Other Grains	★ Tax of 1/4 Mill Per Bushel		★ Total Tax		REMARKS		
						Dollars	Cts.								Dollars	Cts.	Dollars	Cts.			

Note ★ Assessors will not fill these Columns

Real Estate
 Chippewa Point
 Shakopee Island
 Shakopee
 Ojibway
 All's 1st Add'n to

SUMMARY OF TAX COLLECTION

Original Levy	-	-	-	-	-	-	\$ 50,596.04
Additions	-	-	-	-	-	-	\$ 72.38
							\$ 50,668.42
Abatements	-	-	-	-	-	-	\$ 98.06
							\$ 50,370.36

COLLECTIONS

March Settlement	-	-	-	-	-	-	\$ 742.61
June Settlement	-	-	-	-	-	-	\$ 27,766.55
November Settlement	-	-	-	-	-	-	\$ 12,585.71
January Settlement	-	-	-	-	-	-	\$ 393.07
							\$ 48,171.44
Over Collected	-	-	-	-	-	-	\$ 46.78
Under Collected	-	-	-	-	-	-	\$
Delinquent	-	-	-	-	-	-	\$ 245.70
							\$ 2198.92
Total	-	-	-	-	-	-	\$ 50,370.36

Real Estate

Suburban Island

Clippoon Point

Belmont Springs

Ojibway

Bill's 1st Add'n to
Hickam Gunge Marsh

COLLECTIONS OF TAXES OF 1960

Town OF *Shingobee* CASS COUNTY, MINNESOTA

FUNDS	MARCH SETTLEMENT 1961	JUNE SETTLEMENT 1961	NOV. SETTLEMENT 1961	Amount Collected from Nov. 1961 to First Monday in Jan. 1962	REDUCTIONS	Total Reductions and Collected	BALANCE UNCOLLECTED	ADDITIONS	Total Uncollected to First Monday in January, 1962
State—Non-Homestead	9508	50545	20697	976					
State—Homestead	10618	71993	31772	1052					
County Revenue	94120	355231	159721	5123					
County Road and Bridge	56529	213352	95929	3077					
County Welfare	164046	619147	278385	8929					
County Bond and Interest, PERA	15913	60039	27004	866					
Civ. Def.	650	2454	1103	36					
Co. Nurse	5653	21335	9593	308					
R. + B. Bldg.	5653	21335	9593	308					
Town Revenue	5653	21335	9593	308					
Town Road and Bridge	25438	96009	43167	1385					
Town Drag									
Town State Loan									
Phone	4240	16001	7195	231					
Cemetery	5652	21335	9593	307					
Fire	4240	16001	7195	231					
School Local 1 Mill									
School Special	127645	405282	194965	3846					
School State Loan									
Deficiency	132700	500843	225193	7223					
Tuition									
Transportation									
C.O.	43584	164495	73961	2372					
B. + S.	24646	93021	41824	1342					
PERA	5710	21548	9689	311					
Agv. Assn	1413	5334	2399	76					
	7436	277655	125857	38307					

	LOCAL 1 MILL	SPECIAL	STATE LOAN	Deficiency	C.O.	B. + S.	PERA	TOTALS
MARCH SETTLEMENT		13676		25684	8436	4770	1106	53672
		113969		107016	35148	19876	4604	250613
Totals		127645		132700	43584	24646	5710	334285
JUNE SETTLEMENT		128100		240570	79012	44681	10358	502713
		277182		260273	35493	49340	11198	682476
Totals		405282		500843	164495	93021	21548	9185189
NOVEMBER SETTLEMENT		44857		84242	27668	15646	3624	176037
		150108		140951	46293	26178	6065	369595
Totals		194965		225193	73961	41824	9689	545632
NOVEMBER to JANUARY		3846		7223	2372	1342	311	15094
Totals		3846		7223	2372	1342	311	15094
ADDITIONS								
Totals								
REDUCTIONS								
Totals								

Real Estate
 Shingobee Land
 Chippewa Point
 Abokona
 Ojibway
 1st Add'n 66

Assessment Roll and Tax List of Real Property in the Town of Spring Lake of Shingobee County, Minnesota

Cass County, Minnesota, for Taxes for the Year 1960.

Form 50-D MILLER-DAVIS COMPANIES, INC. * Indicate Type of Property: R-Residential, C-Commercial, I-Industrial, U-Utility, F-Farm, L-Lakeshore, T-Timber, M-Mineral

Table with columns: IN WHOSE NAME ASSESSED, DESCRIPTION OF PROPERTY, TRUE AND FULL VALUATIONS, ASSESSED VALUATIONS, VALUATIONS BY SCHOOL DISTRICTS AS EQUALIZED BY DEPARTMENT OF TAXATION, TAX including State Homestead, SPECIAL TAXES, TOTAL TAXES, PAID, WHEN PAID, Number of Receipt, March Settlement 1961, June Settlement 1961, Penalty, November Settlement 1961, Collections to First Monday in January 1962, Delinquent on First Monday in January 1962, Total Delinquent Tax and Penalty, REMARKS.

Real Est. 10-31

10-31

Shingobee Island

Chippewa Point

Abokons Springs

Olney

Ball's 1st Add'n to

Shingobee Island

Assessment Roll and Tax List of Real Property in the City of Aurora

* Indicate Type of Property: R-Residential, C-Commercial, I-Industrial, U-Utility, F-Farm, L-Lakeshore, T-Timber, M-Mineral

Cass County, Minnesota, for Taxes for the Year 1960.

Main table with columns: IN WHOSE NAME ASSESSED, DESCRIPTION OF PROPERTY, TRUE AND FULL VALUATIONS, ASSESSED VALUATIONS, VALUATIONS BY SCHOOL DISTRICTS AS EQUALIZED BY DEPARTMENT OF TAXATION, TAX INCLUDING STATE HOMESTEAD, SPECIAL TAXES, TOTAL TAXES, PAID WHEN PAID, Number of Receipt, March Settlement 1961, June Settlement 1961, November Settlement 1961, Collections to First Monday in January 1962, Delinquent on First Monday in January 1962, Total Delinquent Tax and Penalty, REMARKS.

Assessment Roll and Tax List of Real Property in the Town of Springdale

Cass County, Minnesota, for Taxes for the Year 1960.

Indicate Type of Property: R-Residential, C-Commercial, I-Industrial, U-Utility, F-Farm, L-Lakeshore, T-Timber, M-Mineral

Main table with columns: IN WHOSE NAME ASSESSED, DESCRIPTION OF PROPERTY, TRUE AND FULL VALUATIONS, ASSESSED VALUATIONS, VALUATIONS BY SCHOOL DISTRICTS AS EQUALIZED BY DEPARTMENT OF TAXATION, Tax Including State Homestead, State Tax on Non-Homestead, SPECIAL TAXES, TOTAL TAXES, PAID, WHEN PAID, Number of Receipt, March Settlement 1961, June Settlement 1961, November Settlement 1961, Collections to First Monday in January 1962, Delinquent on First Monday in January 1962, Total Delinquent Tax and Penalty, REMARKS.

Real Est. Tax-31

142-31

McGroves Island

Chippewa Point

Abokona Springs

Oshtemo

1st Add'n to

Spring Grove Beach

Assessment Roll and Tax List of Real Property in the *Southern* of *Stingee*

* Indicate Type of Property: R-Residential, C-Commercial, I-Industrial, U-Utility, F-Farm, L-Lakeshore, T-Timber, M-Mineral

Table with columns: IN WHOSE NAME ASSESSED, SUBDIVISION, Number of Acres of Land, TRUE AND FULL VALUATIONS (LAND, BUILDINGS, MACHINERY, TOTAL), ASSESSED VALUATIONS (RURAL, ALL OTHER, MACHINERY, Seasonal and Recreational Cabins, TOTAL ASSESSED VALUE), and FINAL EQUALIZED VALUE.

Cass County, Minnesota, for Taxes for the Year 1960.

Table with columns: SDLD FOR TAXES, VALUATIONS BY SCHOOL DISTRICTS AS EQUALIZED BY DEPARTMENT OF TAXATION (District No., District No., District No., District No., District No.), Tax Including State Homestead, State Tax on Non-Homestead, SPECIAL TAXES, SPECIAL TAXES, TOTAL TAXES, PAID, WHEN PAID, Number of Receipt, March Settlement 1961, June Settlement 1961, November Settlement 1961, Collections to First Monday in January 1962, Delinquent on First Monday in January 1962, Total Delinquent Tax and Penalty, and REMARKS.

Real Est

Stingee Island

Chippewa Point

Abokoa Springs

Chippewa Point

Ball's 1st Add'n to

Ironma Green Beach

Assessment Roll and Tax List of Real Property in the Town of Sturgeon of Minnesota

* Indicate Type of Property: R-Residential, C-Commercial, I-Industrial, U-Utility, F-Farm, L-Lakeshore, T-Timber, M-Mineral

Cass County, Minnesota, for Taxes for the Year 1960.

Table with columns: IN WHOSE NAME ASSESSED, DESCRIPTION OF PROPERTY, TRUE AND FULL VALUATIONS, ASSESSED VALUATIONS, VALUATIONS BY SCHOOL DISTRICTS AS EQUALIZED BY DEPARTMENT OF TAXATION, TAXES, PAID, WHEN PAID, and REMARKS.

Table with columns: IN WHOSE NAME ASSESSED, DESCRIPTION OF PROPERTY, TRUTH AND FULL VALUATIONS (LAND, BUILDINGS, MACHINERY, TOTAL), ASSESSED VALUATIONS (RURAL, ALL OTHER, MACHINERY, Seasonal and Recreational Cabins, TOTAL ASSESSED VALUE), Total Assessed Value as Equalized by the Board of Review, FINAL EQUALIZED VALUE. Includes handwritten entries for various property owners like Burdette & Grace R. Anderson.

Table with columns: SOLD FOR TAXES, VALUATIONS BY SCHOOL DISTRICTS AS EQUALIZED BY DEPARTMENT OF TAXATION (District No., Rate, etc.), TAX INCLUDING STATE HOMESTEAD, SPECIAL TAXES, TOTAL TAXES, PAID, WHEN PAID, Number of Receipt, March Settlement, June Settlement, November Settlement, Collections to First Monday in January, Delinquent on First Monday in January, Total Delinquent Tax and Penalty, REMARKS. Includes handwritten notes on tax payments and delinquencies.

Real Est.

Vertical text on the right edge of the page, including "148-31" and "Spring Lake Island" etc.

Assessment Roll and Tax List of Real Property in the Town of Loxa of Stargobee

Cass County, Minnesota, for Taxes for the Year 1960.

Form SCD MILLER & CO., MINNEAPOLIS * Indicate Type of Property: R-Residential, C-Commercial, I-Industrial, U-Utility, F-Farm, L-Lakeshore, T-Timber, M-Mineral

Table with columns: IN WHOSE NAME ASSESSED, DESCRIPTION OF PROPERTY, TRUE AND FULL VALUATIONS, ASSESSED VALUATIONS, VALUATIONS BY SCHOOL DISTRICTS AS EQUALIZED BY DEPARTMENT OF TAXATION, SOLD FOR TAXES, SPECIAL TAXES, TOTAL TAXES, PAID, WHEN PAID, Number of Receipt, March Settlement 1961, June Settlement 1961, November Settlement 1961, Collections to First Monday in January 1962, Delinquent on First Monday in January 1962, Total Delinquent Tax and Penalty, REMARKS.

(cont next page)

210

1899 725 2604 222 308 126 636 274 274 238 310

238 = 238 12666 4068 308 17042 284 = 436 522 = 674 16734

142-31

Stargobee Island

Chilipewen Point

Abolona Springs

Officer

1st Add'n to Ritchie Green Beach

Assessment Roll and Tax List of Real Property in the Town of Kingohee

Cass County, Minnesota, for Taxes for the Year 1960

* Indicate Type of Property: R-Residential, C-Commercial, I-Industrial, U-Utility, F-Farm, L-Lakeshore, T-Timber, M-Mineral

Table with columns: IN WHOSE NAME ASSESSED, DESCRIPTION OF PROPERTY, TRU AND FULL VALUATIONS, ASSESSED VALUATIONS, VALUATIONS BY SCHOOL DISTRICTS AS EQUALIZED BY DEPARTMENT OF TAXATION, TAX INCLUDING STATE HOMESTEAD, SPECIAL TAXES, TOTAL TAXES, PAID, WHEN PAID, Number of Receipts, March Settlement 1961, June Settlement 1961, Penalty, November Settlement 1961, Collections to First Monday in January 1962, Delinquent on First Monday in January 1962, Total Delinquent Tax and Penalty, REMARKS.

Assessment Roll and Tax List of Real Property in the State of Iowa of Kinglake

* Indicate Type of Property: R-Residential, C-Commercial, I-Industrial, U-Utility, F-Farm, L-Lakeshore, T-Timber, M-Mineral

Cass County, Minnesota, for Taxes for the Year 1960.

Table with columns: IN WHOSE NAME ASSESSED, DESCRIPTION OF PROPERTY, TRUE AND FULL VALUATIONS, ASSESSED VALUATIONS, VALUATIONS BY SCHOOL DISTRICTS AS EQUALIZED BY DEPARTMENT OF TAXATION, SOLD FOR TAXES, PAID, WHEN PAID, Number of Receipt, March Settlement 1961, June Settlement 1961, November Settlement 1961, Collections to First Monday in January 1962, Delinquent on First Monday in January 1962, Total Delinquent Tax and Penalty, REMARKS.

Real Est. 117-3

12-8-81
Kobebe Island
Chilopewa Point
Syrina
Aokron
Ojibway
Ball's 1st Add'n to
Chilopewa Game Ranch

Assessment Roll and Tax List of Real Property in the Town of Spring of Stingobee County, Minnesota

Cass County, Minnesota, for Taxes for the Year 1960.

Form SCD MILLER-DAVIES CO., MINNAPOLIS

* Indicate Type of Property: R-Residential, C-Commercial, I-Industrial, U-Utility, F-Farm, L-Lakeshore, T-Timber, M-Mineral

Table with columns: IN WHOSE NAME ASSESSED, DESCRIPTION OF PROPERTY, TRUE AND FULL VALUATIONS, ASSESSED VALUATIONS, VALUATIONS BY SCHOOL DISTRICTS AS EQUALIZED BY DEPARTMENT OF TAXATION, TAXES, PAID, WHEN PAID, and REMARKS.

Real Est

142-31

Stingobee Island Chilpew Potat

Labokous Springs

Chilpew Potat

Ball's 1st Add'n to

Stingobee Quase Beach

Assessment Roll and Tax List of Real Property in the Loux of Shingobee

* Indicate Type of Property: R-Residential, C-Commercial, I-Industrial, U-Utility, F-Farm, L-Lakeshore, T-Timber, M-Mineral

Table with columns: IN WHOSE NAME ASSESSED, DESCRIPTION OF PROPERTY, TRUTH AND FULL VALUATIONS, ASSESSED VALUATIONS, FINAL EQUALIZED VALUE. Includes handwritten entries for various property owners like 'U. S. of America' and 'Robert W. & Neale A. Robinson'.

Cass County, Minnesota, for Taxes for the Year 1960.

Table with columns: VALUATIONS BY SCHOOL DISTRICTS AS EQUALIZED BY DEPARTMENT OF TAXATION, Tax Including State, State Tax on Non-Homestead, SPECIAL TAXES, TOTAL TAXES, PAID, WHEN PAID, Number of Receipt, March Settlement 1961, June Settlement 1961, November Settlement 1961, Collections to First Monday in January 1962, Delinquent on First Monday in January 1962, Total Delinquent Tax and Penalty, REMARKS. Includes handwritten entries for tax payments and settlements.

Real Est.

Shingobee Island, Chippewa Point, Abokona Springs, O'Leary, Fall's 1st Add'n to Chippewa County Road

Assessment Roll and Tax List of Real Property in the Town of Shingobe
* Indicate Type of Property: R-Residential, C-Commercial, I-Industrial, U-Utility, F-Farm, L-Lakeshore, T-Timber, M-Mineral

Cass County, Minnesota, for Taxes for the Year 1960.

Table with columns: IN WHOSE NAME ASSESSED, SUBDIVISION, DESCRIPTION OF PROPERTY, TRUE AND FULL VALUATIONS, ASSESSED VALUATIONS, FINAL EQUALIZED VALUE.

Table with columns: VALUATIONS BY SCHOOL DISTRICTS AS EQUALIZED BY DEPARTMENT OF TAXATION, TAX INCLUDING STATE HOMESTEAD, SPECIAL TAXES, TOTAL TAXES, PAID, WHEN PAID, Number of Receipt, March Settlement 1961, June Settlement 1961, November Settlement 1961, Collections to First Monday in January 1962, Delinquent on First Monday in January 1962, Total Delinquent Tax and Penalty, REMARKS.

Real Est. (M)

14-2-31

Shingobe Island

Chippewa Point

Aberona Springs

Oshtemo

Ball's Jet Add'l to Shingobe Island Beach

Assessment Roll and Tax List of Real Property in the town of Kingokee of Minnesota

* Indicate Type of Property: R-Residential, C-Commercial, I-Industrial, U-Utility, F-Farm, L-Lakeshore, T-Timber, M-Mineral

IN WHOSE NAME ASSESSED	DESCRIPTION OF PROPERTY				No. School District	Indicate Homestead Yes or No	Agricultural Yes or No	Indicate Type of Property	TRUE AND FULL VALUATIONS				ASSESSED VALUATIONS							FINAL EQUALIZED VALUE	REMARKS							
	SUBDIVISION	Sec. or 1/4	Town or Block	Number of Acres of Land Acres 100ths					LAND Exclusive of Structures and Improvements	BUILDINGS and Other Structures	MACHINERY Permanently Attached to Real Estate	TOTAL True and Full Value	RURAL		ALL OTHER		MACHINERY Permanently Attached to Real Estate	Seasonal and Recreational Cabins	TOTAL ASSESSED VALUE			Total Assessed Value as Equalized by the Board of Review	Dollars					
													Homestead Up to \$4,000 20%	Over \$4,000 and Non-Homestead 33 1/3%	Timber Land Class 3e 20%	Homestead Up to \$4,000 25%								Over \$4,000 and Non-Homestead 40%	Dollars	Dollars	Dollars	Dollars
U. S. of America																												
U. S. of America																												
U. S. of America																												
U. S. of America																												
U. S. of America																												
U. S. of America																												
U. S. of America																												
U. S. of America																												
U. S. of America																												
U. S. of America																												
U. S. of America																												
U. S. of America																												
U. S. of America																												
U. S. of America																												
Mattie Krueger				40			Yes	Yes	F	420		420	84			84												
"				40			Yes	Yes	F	510		510	102			102												
"				40			Yes	Yes	T	240		240	48			48												
"				40			Yes	Yes	F	320	420	740	148			148												
				40			Yes	Yes	F	350		670	134			134												
U. S. of America																												
U. S. of America																												
Annie Marie Johnson Caroline Lindstrom				40			No	Yes	T	270		270	90			90												
"				24.30			No	Yes	R	475	233	708	236			236												
				24.30			No	Yes	R	475	194	669	223			223												
				229.30						2235	544	2779	329			329												
											653	2888	382			382												

Cass County, Minnesota, for Taxes for the Year 1960.

SOLD FOR TAXES	VALUATIONS BY SCHOOL DISTRICTS AS EQUALIZED BY DEPARTMENT OF TAXATION						Tax Including State Homestead	State Tax on Non-Homestead 7.01 Mills	SPECIAL TAXES	SPECIAL TAXES	TOTAL TAXES	PAID	WHEN PAID	Number of Receipt	March Settlement 1961	June Settlement 1961	Penalty	November Settlement 1961	Penalty	Collections to First Monday in January 1962	Penalty	Delinquent on First Monday in January 1962	Total Delinquent Tax and Penalty	REMARKS
	District No.	District No.	District No.	District No.	District No.	District No.																		
	Rate	Rate	Rate	Rate	Rate	Rate																		
	Mills	Mills	Mills	Mills	Mills	Mills																		

Balance Paid OCT 30 1961
Part Paid MAY 31 1961
Balance Paid OCT 30 1961
Part Paid MAY 31 1961
Balance Paid OCT 30 1961
Part Paid MAY 31 1961
Balance Paid OCT 30 1961
Part Paid MAY 31 1961
2nd HALF PAID OCT 31 1961
1st Half Paid MAY 30 1961
2nd HALF PAID OCT 31 1961
1st Half Paid MAY 26 1961

1739/12686
6.00 26.70
11.24 40.70
2044.2 2976
2248
236
5892
12180 230
17410
46.22 127.40

11329
26350

* Indicate Type of Property: R-Residential, C-Commercial, I-Industrial, U-Utility, F-Farm, L-Lakeshore, T-Timber, M-Mineral

IN WHOSE NAME ASSESSED	SUBDIVISION	Sec. of Lot	Town or Block	Rng.	Number of Acres of Land	Acres 100ths	TRUE AND FULL VALUATIONS				ASSESSED VALUATIONS								SOLD FOR TAXES	REMARKS		
							LAND Exclusive of Structures and Improvements	BUILDINGS and Other Structures	MACHINERY Permanently Attached to Real Estate	TOTAL True and Full Value	RURAL					ALL OTHER					FINAL EQUALIZED VALUE	
											Homestead 20%	Over \$4,000 and Non-Homestead 33 1/4%	Timber Land Class 3e 20%	Homestead 25%	Over \$4,000 and Non-Homestead 40%	MACHINERY Permanently Attached to Real Estate 33 1/4%	Seasonal and Recreational Cabins 33 1/4%	TOTAL ASSESSED VALUE				Total Assessed Value as Equalized by the Board of Review
U. S. of America	NEW HAMBURG	25	141	31	11.9																	
U. S. of America	NEW HAMBURG																					
U. S. of America	NEW HAMBURG																					
U. S. of America	NEW HAMBURG																					
Marion H. + Miriam G. Berg	Part of Lot 2 of Block 4				4.0		90	126	216					72	72							
Rudolph Miller, et al	Garb Lot 1				10.40			321	321		107			107								
Edith M. + H. W. Jensen	Part of Lot 3 of Block 4				46		100	2016	2116		423			423								
Spencer + Alvin Kubo	Part of Lot 4 of Block 4				9.95		90	618	708		142			142								
Spencer - Ross Post #184 American Legion - Station	Part of Lot 2				49.71			144	144		48			48								
Spencer + Alvin Kubo	Part of Lot 2				21.61			210	210		42			42								
Muyon L. + Florence Heiselman	Part of Lot 3 of Block 4				20.36			50	50		10			10								
Frank + Elizabeth Hirschfeldt	Part of Lot 3 of Block 4				6			35	528	440	113			113								
Frank + Elizabeth Hirschfeldt	5 acres of Block 4				5			100	722	602	78			78								
Muyon L. + Florence Heiselman	Part of Lot 4 of Block 4				5.75			145	120	144	165		63	195	63							
Harold H. Sylvan	50' x 300' on E side of Grand Beach				33			120	120				48	48								
U. S. of America	NEW HAMBURG																					
Spencer + Alvin Kubo	NEW HAMBURG																					
" " "	NEW HAMBURG																					
" " "	NEW HAMBURG																					
Hilding H. Christofferson	Bounded on N. by SRH, bounded on S. by lake bounded on W. line 50' E. of E boundary of Lot 26, Blk. 1, Crescent Beach, on E. side by E. line of Lot 3, Sec 25-141-31 less Shively tract.				44			100	461	551	96			254	217							
									1840	5743	6583	961	210	40	516	1627						
									1860	5691	7651	996	218	48	600	1822						

SOLD FOR TAXES	VALUATIONS BY SCHOOL DISTRICTS AS EQUALIZED BY DEPARTMENT OF TAXATION						State Tax on Non-Homestead 7.01 Mills	SPECIAL TAXES	SPECIAL TAXES	TOTAL TAXES	PAID	WHEN PAID	Number of Receipt	March Settlement 1961	June Settlement 1961	November Settlement 1961	Penalty	Collections to First Monday in January 1962	Penalty	Delinquent on First Monday in January 1962	Total Delinquent Tax and Penalty	
	District No.	District No.	District No.	District No.	District No.	District No.																
	Rate	Rate	Rate	Rate	Rate	Rate																
	Mills	Mills	Mills	Mills	Mills	Mills																
	119	119	119	119	119																	
	423																					
	142																					
	48																					
	42																					
	10																					
	113																					
	145																					
	63																					
	48																					
	21																					
	27																					
	23																					
	883																					
	159																					
	7042																					

Bounded on N. by SRH, bounded on S. by lake bounded on W. line 50' E. of E boundary of Lot 26, Blk. 1, Crescent Beach, on E. side by E. line of Lot 3, Sec 25-141-31 less Shively tract.

Part next page

142-31
Spring Lake Island
Chippewa Point
Abokom
Spring
All's 1st Add'n to
Spring Lake Game Ranch

Assessment Roll and Tax List of Real Property in the Town of Langlade of Langlade County, Minnesota

* Indicate Type of Property: R-Residential, C-Commercial, I-Industrial, U-Utility, F-Farm, L-Lakeshore, T-Timber, M-Mineral

Cass County, Minnesota, for Taxes for the Year 1960.

Table with columns: IN WHOSE NAME ASSESSED, DESCRIPTION OF PROPERTY, TRUE AND FULL VALUATIONS, ASSESSED VALUATIONS, VALUATIONS BY SCHOOL DISTRICTS AS EQUALIZED BY DEPARTMENT OF TAXATION, PAID, WHEN PAID, and REMARKS. Includes handwritten entries and numerical data for 20 properties.

Real Est. (M)

142-51

Langlade Island

Chippewa Point

Abokona Springs

Ojibway

1117 1st Add'n to Hitchcock Green Beach

* Indicate Type of Property: R-Residential, C-Commercial, I-Industrial, U-Utility, F-Farm, L-Lakeshore, T-Timber, M-Mineral

Form SCD-1, Miller & Davis Co., Minneapolis

IN WHOSE NAME ASSESSED	DESCRIPTION OF PROPERTY				No. School District	TRUE AND FULL VALUATIONS			ASSESSED VALUATIONS									FINAL EQUALIZED VALUE	REMARKS	
	SUBDIVISION	Sec. or Lot	Town or Block	Number of Acres of Land Acres 100ths		LAND Exclusive of Structures and Improvements	BUILDINGS and Other Structures	MACHINERY Permanently Attached to Real Estate	RURAL			ALL OTHER			MACHINERY Permanently Attached to Real Estate	Seasonal and Recreational Cabins	TOTAL ASSESSED VALUE			Total Assessed Value as Equalized by the Board of Review
									Homestead Up to \$1,000 20%	Over \$1,000 and Non-Homestead 33 1/3%	Timber Land Class 3c 20%	Homestead Up to \$4,000 25%	Over \$4,000 and Non-Homestead 40%	Dollars						
						Dollars	Dollars	Dollars	Dollars	Dollars	Dollars	Dollars	Dollars	Dollars	Dollars	Dollars	Dollars	Dollars		

*Summit Ref. Co. Crown
O.P. Grace A. Peri*

*Part of Lot 4 Blg. N. S.
Lot 1849-6661-Grand Beach*

Division # 4 MISSION E. REAR

PART OF E 40 ACS. OF 607 LOT 4

SOLD FOR TAXES	VALUATIONS BY SCHOOL DISTRICTS AS EQUALIZED BY DEPARTMENT OF TAXATION					Tax including State Homestead	State Tax on Non-Homestead	SPECIAL TAXES	SPECIAL TAXES	TOTAL TAXES	PAID	WHEN PAID	Number of Receipt	March Settlement 1961	June Settlement 1961	January Penalty	November Settlement 1961	January Penalty	Collections to First Monday in January 1962	Delinquent on First Monday in January 1962	Total Delinquent Tax and Penalty					
	District No.	District No.	District No.	District No.	District No.																	Rate	Rate	Rate	Rate	Rate
	Dollars	Dollars	Dollars	Dollars	Dollars																	Dollars	Dollars	Dollars	Dollars	Dollars

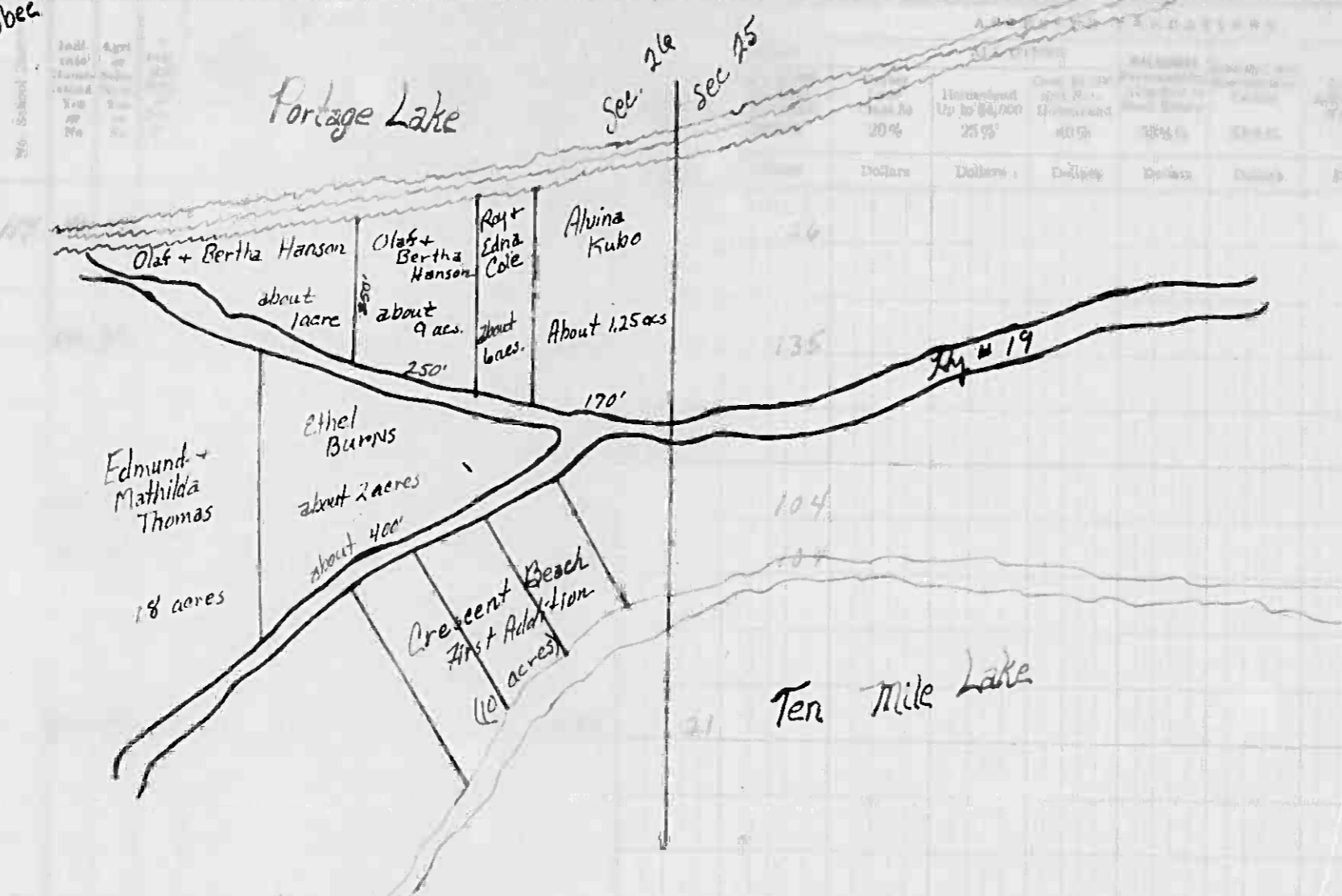
PAID IN FULL APR 27 1961 87 06

4 12

92 00

Shiocton Island Citygreen Point Apokona Springs Oakway Pella's 1st Add'n to Pella's Green Beach

IN WHOSE NAME ASSESSED	DESCRIPTION OF PROPERTY				Total Assessed Value as Equalized by the Board of Review	FINAL EQUALIZED VALUE
	SUBDIVISION	Sec. or Lot	Town or Block	Range		
Elizabeth S. + Hubert W. Lee	1	26	141	31	130	130
Elizabeth S. + Hubert W. Lee	2				135	135
Elizabeth S. + Hubert W. Lee	3				135	135
Louis Kuegel	6				104	104
State of Minnesota	8				180	180
State of Minnesota	9				21	21
U. S. of America	10				21	21
U. S. of America	12					
U. S. of America	13					
U. S. of America	14					
Claf + Bertha Hanson	15				231	231
Alvina Kubo	16				30	30
U. S. of America	17				10	10
Edwene J. + Sadie L. Schumpeter	18				60	60
Ray L. + Leona L. Lee	20				223	223



According to information from H. W. Jensen - Total acreage of lot 3 - sec. 26, is 33.75 acres.

SOLD FOR TAXES	VALUATIONS BY SCHOOL DISTRICTS AS EQUALIZED BY DEPARTMENT OF TAXATION						Tax Including State Homestead	State Tax on Non-Homestead	SPECIAL TAXES	SPECIAL TAXES	TOTAL TAXES	PAID	WHEN PAID	Number of Receipts	March Settlement 1961	June Settlement 1961	Penalty	November Settlement 1961	Penalty	Collections to First Monday in January 1962	Penalty	Delinquent on First Monday in January 1962	Total Delinquent Tax and Penalty	REMARKS
	District No.	District No.	District No.	District No.	District No.	District No.																		
	119	119	119	119	119	119	3372	88			3466	2nd Half Paid JUL 27 1961												
							3276	94			3370	1st Half Paid MAY 31 1961	14570		3415									10334
							2524	72			2596	Balance Paid OCT 30 1961												10334
							2524	72			2596	Part Paid MAY 31 1961	17391		400									10334
							510				510	PAID IN FULL FEB 9 1961	2477	570										979
							6182				6182	2nd Half Paid OCT 31 1961	17544		3091									
							242	08			250	PAID IN FULL MAR 22 1961	3513		250									10104
							1606	42			1648	PAID IN FULL MAY 31 1961	14988		1648									
							3412	156			5568	2nd Half Paid OCT 26 1961	19238		2784									
							14488	532			26180	1st Half Paid MAY 17 1961	8134		14082									

Shingobee Island
Chilpewen Point
Abegoum
Spring
Ojibway
Ball's 1st Add'n to
Ritchie Game Beach

Assessment Roll and Tax List of Real Property in the Town of Lincoln of Kingdon

* Indicate Type of Property: R-Residential, C-Commercial, I-Industrial, U-Utility, F-Farm, L-Lakeshore, T-Timber, M-Mineral

Table with columns: IN WHOSE NAME ASSESSED, DESCRIPTION OF PROPERTY, TRUE AND FULL VALUATIONS, ASSESSED VALUATIONS, and FINAL EQUALIZED VALUE. Includes handwritten entries for various property owners like Henry Healdman and Mike Concelt, Jr.

Cass County, Minnesota, for Taxes for the Year 1960.

Table with columns: SOLO FOR TAXES, VALUATIONS BY SCHOOL DISTRICTS AS EQUALIZED BY DEPARTMENT OF TAXATION, Tax Including State Homestead, State Tax on Non-Homestead, SPECIAL TAXES, TOTAL TAXES, PAID, WHEN PAID, Number of Receipt, March Settlement, June Settlement, November Settlement, Collections to First Monday in January, Delinquent on First Monday in January, Total Delinquent Tax and Penalty, and REMARKS. Includes handwritten notes and dates like 'PAID IN FULL MAY 18 1961'.

Real Estate

142-31

Kingdon Island

Chippewa Point

Abeona Springs

Ojibwa

Ball's Let Add'n to Lake George Park

Assessment Roll and Tax List of Real Property in the Town of Spring Lake, Cass County, Minnesota

Cass County, Minnesota, for Taxes for the Year 1960.

Table with columns: IN WHOSE NAME ASSESSED, DESCRIPTION OF PROPERTY, TRUE AND FULL VALUATIONS, ASSESSED VALUATIONS, VALUATIONS BY SCHOOL DISTRICTS AS EQUALIZED BY DEPARTMENT OF TAXATION, TAXES, PAID, WHEN PAID, Number of Receipt, March Settlement 1961, June Settlement 1961, November Settlement 1961, Collections to First Monday in January 1962, Delinquent on First Monday in January 1962, Total Delinquent Tax and Penalty, REMARKS.

Real Est. 1960

142-81

Shingobee 1st Land

Chippewa Point

Neokona

Ojibway

1st Add'n to

Shingobee 1st Land

Chippewa Point

Neokona

Assessment Roll and Tax List of Real Property in the Town of *Lewis* of *Minnesota*

* Indicate Type of Property: R-Residential, C-Commercial, I-Industrial, U-Utility, F-Farm, L-Lakeshore, T-Timber, M-Mineral

Cass County, Minnesota, for Taxes for the Year 1960.

Table with columns for Property Description, Valuations (True and Full, Assessed), Taxes (School Districts, State, Special, Total), and Payment Status. Includes handwritten entries for owners like James K. Buekendorf and Roy E. + Maude M. Glass.

Assessment Roll and Tax List of Real Property in the Town of Springtree

Cass County, Minnesota, for Taxes for the Year 1960.

Form 560 - MILLER DAYS CO. - MINNEAPOLIS

Table with columns: IN WHOSE NAME ASSESSED, DESCRIPTION OF PROPERTY, TRUE AND FULL VALUATIONS, ASSESSED VALUATIONS, and FINAL EQUALIZED VALUE. Includes handwritten entries for Robert & Bessie Smith, Richard L. Rindlerland, etc.

Table with columns: VALUATIONS BY SCHOOL DISTRICTS AS EQUALIZED BY DEPARTMENT OF TAXATION, TAX INCLUDING STATE HOMESTEAD, SPECIAL TAXES, TOTAL TAXES, PAID, WHEN PAID, and REMARKS. Includes handwritten entries for tax payments and dates.

142-51

Real Est.

Springtree Beach

Springtree Island

Chippewa Point

Isabekona

Ojibway

All's 1st Add'n to

Assessment Roll and Tax List of Real Property in the Town of Springdale of St. Louis County, Minnesota

* Indicate Type of Property: R-Residential, C-Commercial, I-Industrial, U-Utility, F-Farm, L-Lakeshore, T-Timber, M-Mine/Mineral

Cass County, Minnesota, for Taxes for the Year 1960.

Table with columns: IN WHOSE NAME ASSESSED, DESCRIPTION OF PROPERTY, TRUE AND FULL VALUATIONS, ASSESSED VALUATIONS, VALUATIONS BY SCHOOL DISTRICTS AS EQUALIZED BY DEPARTMENT OF TAXATION, TAXES, PAID, WHEN PAID, Number of Receipt, March Settlement 1961, June Settlement 1961, November Settlement 1961, Collections in First Monday in January 1962, Delinquent on First Monday in January 1962, Total Delinquent Tax and Penalty, REMARKS.

142-51

Real Est.

Springdale Beach

Springdale Island

Chippewa Point

Stokema Springs

Ojibway

Paul's 1st Add'n to Springdale Beach

Assessment Roll and Tax

Real Property in the

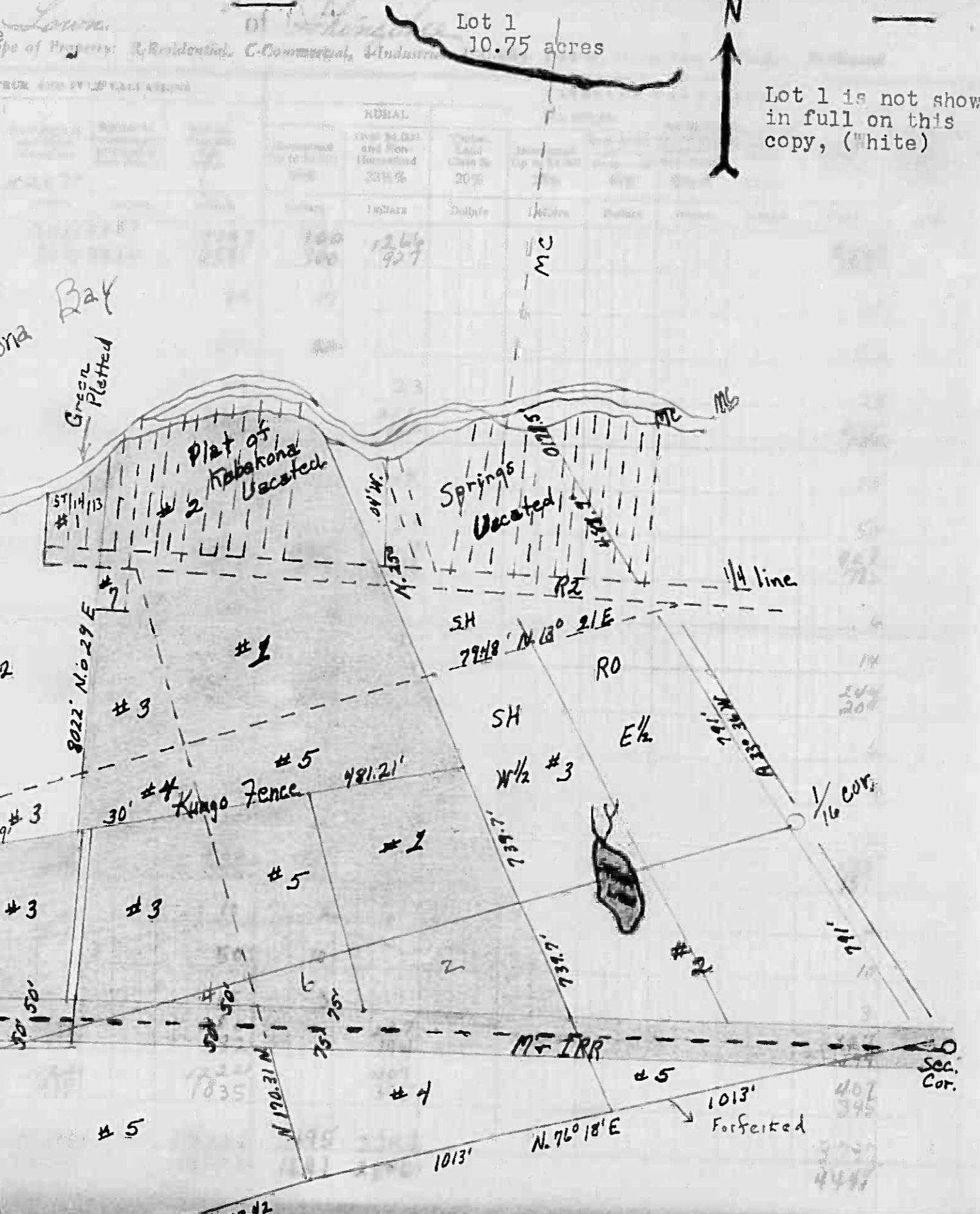
EDIN 300 MILLER-DAVIS CO. MINNEAPOLIS

IN WHOSE NAME ASSESSED

Handwritten list of names and descriptions for lots 1 through 20, including names like Donald C. & Maxine D. Cooke, A. J. Thompson, and Arthur H. Peterson.

DESCRIPTION OF

Handwritten descriptions for lots 1 through 20, including details like '100' x 100' of land' and 'Platted'.



Resurvey Plat of 8-142-31 on file in Register of Deeds Office

Lot 1 is not shown in full on this copy, (white)

Cass County, Minnesota, for Taxes for the Year 1961.

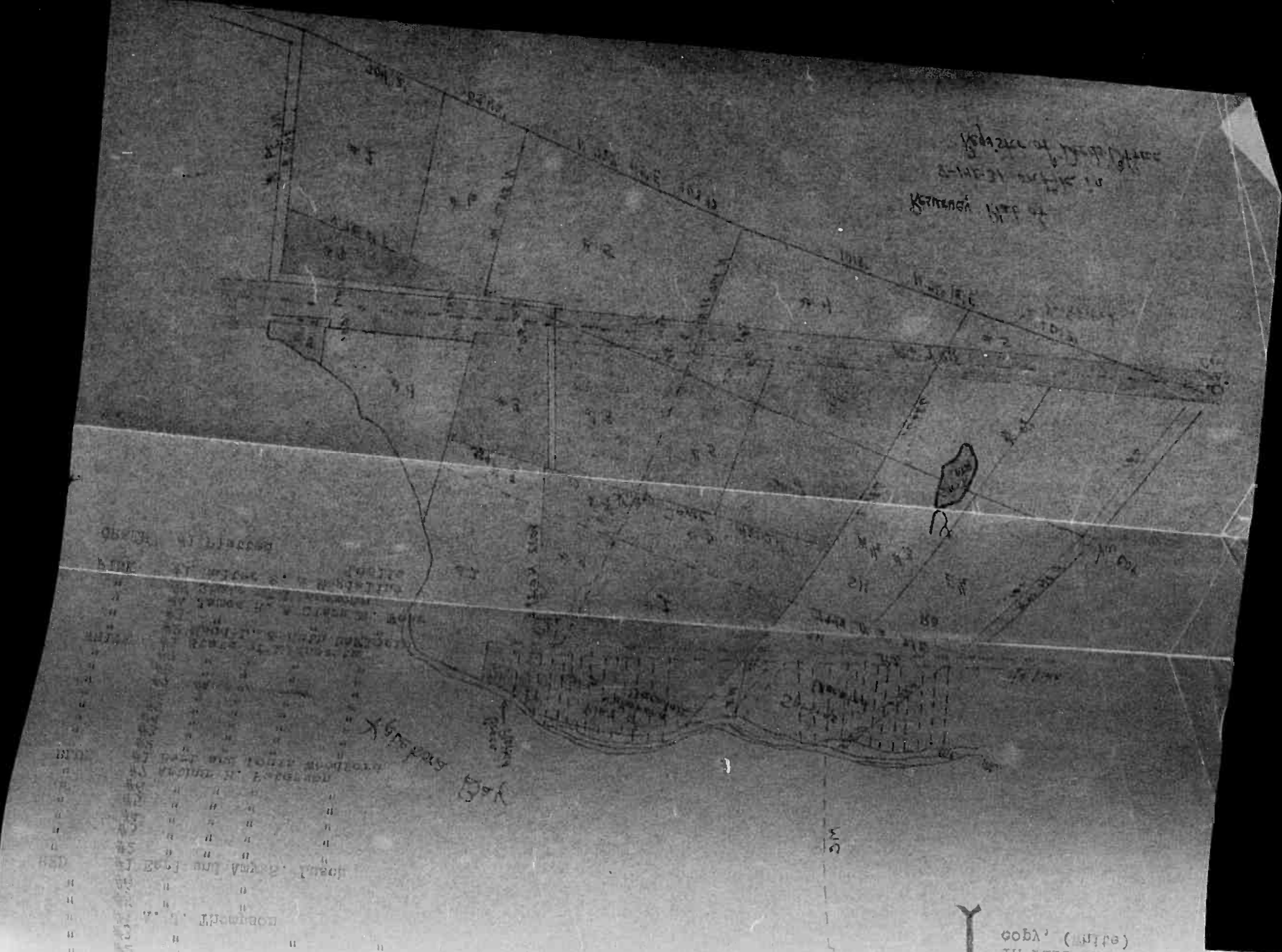
Table with columns for School District, Valuation, Tax (including State Homestead), SPECIAL TAXES, TOTAL TAXES, PAID, WHEN PAID, and various settlement dates (March, June, November, etc.).

Assessment Roll and Tax List of Real Property

Indicate Type of Property: R-Residential, C-Commercial, I-Industrial, U-Utility, F-Farm, L-Lakeshore, T-Timber, M-Mineral

Table with columns: IN WHOSE NAME ASSESSED, SUBDIVISION, TRUE AND FULL VALEATIONS, ASSESSED VALEATIONS, and FINAL EQUALIZED VALUE. Includes entries for Donald L. + Maxine D. Cooks, A. J. Thompson, Walter L. + Magdalene L. Beske, Carl Raymond + Amy L. Lusch, Arthur L. + Lillian Peterson, Bert + Louise Woodford, Bert Woodford, Bert + Louise Woodford, Alice Norman.

(cont. next page)



Cass County, Minnesota, for Taxes for the Year 1960.

Table with columns: VALUATIONS BY SCHOOL DISTRICTS AS EQUALIZED BY DEPARTMENT OF TAXATION, TAXES, PAID, WHEN PAID, Number of Receipts, March Settlement 1961, June Settlement 1961, November Settlement 1961, Collections to First Monday in January 1961, Delinquent on First Monday in January 1962, Total Delinquent Tax and Penalty, REMARKS. Includes entries for Donald L. + Maxine D. Cooks, A. J. Thompson, Walter L. + Magdalene L. Beske, Carl Raymond + Amy L. Lusch, Arthur L. + Lillian Peterson, Bert + Louise Woodford, Bert Woodford, Bert + Louise Woodford, Alice Norman.

Assessment Roll and Tax List of Real Property in the Town of Springdale

Cass County, Minnesota, for Taxes for the Year 1960.

Form 500 MILLER-DAVIS CO., MINNEAPOLIS. * Indicate Type of Property: R-Residential, C-Commercial, I-Industrial, U-Utility, F-Farm, L-Lakeshore, T-Timber, M-Mineral

142-51 Real Estate

Table with columns: IN WHOSE NAME ASSESSED, DESCRIPTION OF PROPERTY, TRUE AND FULL VALUATIONS, ASSESSED VALUATIONS (RURAL, ALL OTHER, MACHINERY, Seasonal and Recreational Cabins), TOTAL ASSESSED VALUE, FINAL EQUALIZED VALUE.

Table with columns: VALUATIONS BY SCHOOL DISTRICTS AS EQUALIZED BY DEPARTMENT OF TAXATION, TAX INCLUDING STATE HOMESTEAD, STATE TAX ON NON-HOMESTEAD, SPECIAL TAXES, TOTAL TAXES, PAID, WHEN PAID, Number of Receipt, March Settlement 1961, June Settlement 1961, Penalty, November Settlement 1961, Collections to First Monday in January 1962, Delinquent on First Monday in January 1962, Total Delinquent Tax and Penalty, REMARKS.

Shingobee Island, Chippewa Point, Abekona Springs, Johnson, Hall's 1st Addn to Otisbee Game Beach

Assessment Roll and Tax List of Real Property in the Town of *Shingabe* of *Minnesota*

* Indicate Type of Property: R-Residential, C-Commercial, I-Industrial, U-Utility, F-Farm, L-Lakeshore, T-Timber, M-Mineral

Table with columns: DESCRIPTION OF PROPERTY, TRUE AND FULL VALUATIONS, ASSESSED VALUATIONS (RURAL, ALL OTHER), Total Assessed Value, and FINAL EQUALIZED VALUE. Rows include properties like 'State of Minnesota' and 'Herbert A. Metzger'.

Cass County, Minnesota, for Taxes for the Year 1960.

Table with columns: VALUATIONS BY SCHOOL DISTRICTS AS EQUALIZED BY DEPARTMENT OF TAXATION (District No., Rate), Tax Including State Homestead, State Tax on Non-Homestead, SPECIAL TAXES, TOTAL TAXES, PAID, WHEN PAID, and REMARKS. Includes rows for property taxes and settlement dates.

Real Estate

Shingabe Island

Shingabe Island

Chippewa Point

Labokona

Ojibway

P. L. S. Let Adm. to R. H. Schaefer

Assessment Roll and Tax List of Real Property in the Town of Kingabee of Cass County, Minnesota

Cass County, Minnesota, for Taxes for the Year 1960.

Table with columns: IN WHOSE NAME ASSESSED, DESCRIPTION OF PROPERTY, TRUE AND FULL VALUATIONS, ASSESSED VALUATIONS, VALUATIONS BY SCHOOL DISTRICTS, TAX INCLUDING STATE HOMESTEAD, SPECIAL TAXES, TOTAL TAXES, PAID, WHEN PAID, Number of Receipt, March Settlement, June Settlement, November Settlement, Collections to First Monday in January, Delinquent on First Monday in January, Total Delinquent Tax and Penalty, REMARKS.

142-51

Real Est.

142-51

Real Est.

Shingle Beach, Shingle Island, Chippewa Point, Abovona Springs, Otterway, Ball's 1st Add'n to Abovona Springs, Shingle Beach

Assessment Roll and Tax List of Real Property in the Town of Kingsbee

* Indicate Type of Property: R-Residential, C-Commercial, I-Industrial, U-Utility, F-Farm, L-Lakeshore, T-Timber, M-Mineral

FORM 500 MILLER-DAVIS CO. MINN. POLIS

Table with columns: IN WHOSE NAME ASSESSED, DESCRIPTION OF PROPERTY, TRUE AND FULL VALUATIONS, ASSESSED VALUATIONS, and FINAL EQUALIZED VALUE. Includes entries for Leura A. & Nettie S. Becker, John Hanson, and Carl E. & Dorothy E. Walters.

Cass County, Minnesota, for Taxes for the Year 1960.

Table with columns: VALUATIONS BY SCHOOL DISTRICTS AS EQUALIZED BY DEPARTMENT OF TAXATION, TAX INCLUDING STATE HOMESTEAD, SPECIAL TAXES, TOTAL TAXES, PAID, WHEN PAID, Number of Receipt, March Settlement, June Settlement, November Settlement, Collections to First Monday in January 1962, Delinquent on First Monday in January 1962, Total Delinquent Tax and Penalty, REMARKS. Includes entries for 1st Half Paid, 2nd Half Paid, and PAID IN FULL.

142-51

142-51

Beach, Kingsbee Island, Childers Point, Lakeona Springs, Ojibway, Pillsbury's 1st Add'n to Pitomaque Beach

Assessment Roll and Tax List of Real Property in the

Town of Shingobee

* Indicate Type of Property: R-Residential, C-Commercial, I-Industrial, U-Utility, F-Farm, L-Lakeshore, T-Timber, M-Mineral

Cass County, Minnesota, for Taxes for the Year 1960.

Table with columns: IN WHOSE NAME ASSESSED, SUBDIVISION, Town or Block, No. of Acre, Acres 100ths, No. School District, Indicate Home-estead, Indicate Timber, Indicate Type of Property, TRUE AND FULL VALUATIONS (LAND, BUILDINGS, MACHINERY, TOTAL), ASSESSED VALUATIONS (RURAL, ALL OTHER, TOTAL ASSESSED), and FINAL EQUALIZED VALUE.

(cont next page)

97 44

Summary table with columns: TRUE AND FULL VALUATIONS (LAND, BUILDINGS, MACHINERY, TOTAL), ASSESSED VALUATIONS (RURAL, ALL OTHER, TOTAL ASSESSED), and FINAL EQUALIZED VALUE. Includes handwritten totals.

Table with columns: SOLD FOR TAXES, VALUATIONS BY SCHOOL DISTRICTS AS EQUALIZED BY DEPARTMENT OF TAXATION (District No., Rate), Tax including State Homestead, State Tax on Non-Homestead, SPECIAL TAXES, TOTAL TAXES, PAID, WHEN PAID, Number of Receipt, March, June, November Settlement, Penalty, Collections to First Monday in January 1962, Delinquent on First Monday in January 1962, Total Delinquent Tax and Penalty, REMARKS.

Vertical text on the right edge of the page: Kaul Estu, Red Beach, Shingobee Island, Chilpers Point, Lakeona Springs, Jibney, Ball's 1st Add'n to Pitrope, Gunnar Beach.

Assessment Roll and Tax List of Real Property in the Town of Shingle of Shingle

* Indicate Type of Property: R-Residential, C-Commercial, I-Industrial, U-Utility, F-Farm, L-Lakeshore, T-Timber, M-Mineral

Table with columns: IN WHOSE NAME ASSESSED, DESCRIPTION OF PROPERTY, TRUE AND FULL VALUATIONS, ASSESSED VALUATIONS, and FINAL EQUALIZED VALUE. Includes handwritten entries for various property owners like Edward Howard Mysel and Arthur A. + Alpha C. Larson.

Cass County, Minnesota, for Taxes for the Year 1960.

Table with columns: VALUATIONS BY SCHOOL DISTRICTS AS EQUALIZED BY DEPARTMENT OF TAXATION, TAXES, PAID, WHEN PAID, and REMARKS. Includes handwritten entries for various districts and tax amounts.

Table with columns for property description, valuations, taxes, and payments. Includes handwritten entries for owners like Ed. Hold and Kenneth Hillard, and various tax amounts.

Vertical text on the right edge: Slingohee Beach, Slingohee Island, Chipewya Point, Sbokone Springs, Olney, Fall 1st Add'n to Cass County, Minn. Assessor's Office

Assessment Roll and Tax List of Real Property in the Town of Kingsbee

Cass County, Minnesota, for Taxes for the Year 1961

Main table with columns: IN WHOSE NAME ASSESSED, DESCRIPTION OF PROPERTY, TRUE AND FULL VALUATIONS, ASSESSED VALUATIONS (RURAL, ALL OTHER), VALUATIONS BY SCHOOL DISTRICTS AS EQUALIZED BY DEPARTMENT OF TAXATION, TAXES, PAID, WHEN PAID, Number of Receipt, March Settlement, June Settlement, November Settlement, Collections to First Monday in January, Delinquent on First Monday in January, Total Delinquent Tax and Penalty, REMARKS.

142-31

142-31

State of Minnesota

John R. Kansie

Flora J. ...

18, 19, 20

Block Lot 4, Block Lot 5, 5.8 ac. of Block Lot 5

40, 34.20, 5.80

no. mo. C, ya. mo. T, mo. mo. L

8821058, 770924, 2262, 1132, 280, 225, 201, 1756, 1652, 1982, 241, 210, 294, 45, 67, 255, 71, 286, 770

594, 584, 45, 67, 964, 1056

241, 353, # 45, 286, 720, 1056

15898, 1204, 1774, 28264

248, 46, 46

16146, 1204, 1840, 28804

PAID IN FULL MAY 2 1961, PAID IN FULL MAY 2 1961, PAID IN FULL JUN 3 1961

16146, 1204, 1840

Penalty, Penalty, 18.40, 37

1058, 1058

Vertical text on the right margin: Kingsbee Island, Chippewa Point, Lake Park, Sibley, 1st Add'n to Kingsbee Beach

Assessment Roll and Tax List of Real Property in the Town of *Angkor*

Cass County, Minnesota, for Taxes for the Year 1960.

Table with columns: IN WHOSE NAME ASSESSED, DESCRIPTION OF PROPERTY, TRUE AND FULL VALUATIONS, ASSESSED VALUATIONS, VALUATIONS BY SCHOOL DISTRICTS AS EQUALIZED BY DEPARTMENT OF TAXATION, TAX INCLUDING STATE HOMESTEAD, SPECIAL TAXES, TOTAL TAXES, PAID, WHEN PAID, Number of Receipt, March Settlement 1961, June Settlement 1961, November Settlement 1961, Collections to First Monday in January 1962, Delinquent on First Monday in January 1962, Total Delinquent Tax and Penalty, REMARKS.

Assessment Roll and Tax List of Real Property in the Town of Shingobee

Cass County, Minnesota, for Taxes for the Year 1960.

Main table with columns for property description, valuations, taxes, and payment status. Includes sub-tables for 'TRUE AND FULL VALUATIONS', 'ASSESSED VALUATIONS', and 'VALUATIONS BY SCHOOL DISTRICTS AS EQUALIZED BY DEPARTMENT OF TAXATION'.

142-51

Shingobee Beach

Shingobee Island

Chippewa Point

Shokona Springs

Oshtemo

Ill's 1st Add'n to State House

Assessment Roll and Tax List of Real Property in the Town of Springdale

Cass County, Minnesota, for Taxes for the Year 1960.

* Indicate Type of Property: R-Residential, C-Commercial, I-Industrial, U-Utility, F-Farm, L-Lakeshore, T-Timber, M-Mineral

Table with columns: IN WHOSE NAME ASSESSED, SUBDIVISION, TRUE AND FULL VALUATIONS, ASSESSED VALUATIONS, VALUATIONS BY SCHOOL DISTRICTS AS EQUALIZED BY DEPARTMENT OF TAXATION, TAXES, PAID, WHEN PAID, Number of Receipt, March Settlement 1961, June Settlement 1961, November Settlement 1961, Collections to First Monday in January 1962, Delinquent on First Monday in January 1962, Total Delinquent Tax and Penalty, REMARKS.

(cont next page)

142-31

Shungobe Beach, Shungobe Island, Chippewa Point, Abekona Springs, Olmberg, Ball's 1st Add'n to Abekona Springs

Assessment Roll and Tax List of Real Property in the Town of Springdale

* Indicate Type of Property: R-Residential, C-Commercial, I-Industrial, U-Utility, F-Farm, L-Lakeshore, T-Timber, M-Mineral

Cass County, Minnesota, for Taxes for the Year 1960.

Table with columns: IN WHOSE NAME ASSESSED, DESCRIPTION OF PROPERTY, TRUE AND FULL VALUATIONS, ASSESSED VALUATIONS, VALUATIONS BY SCHOOL DISTRICTS, TAXES, PAID, WHEN PAID, Number of Receipt, March Settlement, June Settlement, November Settlement, Collections to First Monday in January, Delinquent on First Monday in January, Total Delinquent Tax and Penalty, REMARKS.

cont next page

Vertical text on the right edge of the page, including names like 'Springdale Island' and 'Springdale Point'.

Assessment Roll and Tax List of Real Property in the Town of Springdale

* Indicate Type of Property: R-Residential, C-Commercial, I-Industrial, U-Utility, F-Farm, L-Lakeshore, T-Timber, M-Mineral

Form 500 MILLER-DAVIS CO., MINNEAPOLIS

Main assessment table with columns for Description of Property, True and Full Valuations, Assessed Valuations, and Final Equalized Value. Includes handwritten notes like 'Govt Lot 1'.

Cass County, Minnesota, for Taxes for the Year 1960.

Tax payment table with columns for Valuations by School Districts, Tax Including State Homestead, State Tax on Non-Homestead, Special Taxes, Total Taxes, PAID, WHEN PAID, Number of Receipts, March Settlement 1961, June Settlement 1961, November Settlement 1961, Collections to First Monday in January 1962, Delinquent on First Monday in January 1962, Total Delinquent Tax and Penalty, and REMARKS.

142-51

Shirley Beach, Springdale Island, Chipewa Point, Springdale, Abokona, Ojibway, Bell's 1st Add'n to Springdale, Springdale

Assessment Roll and Tax List of Real Property in the Town of Shingobee

* Indicate Type of Property: R-Residential, C-Commercial, I-Industrial, U-Utility, F-Farm, L-Lakeshore, T-Timber, M-Mineral

Table with columns: IN WHOSE NAME ASSESSED, SUBDIVISION, No. School District, Indicate Homestead, Acres, TRUE AND FULL VALUATIONS (LAND, BUILDINGS, MACHINERY, TOTAL), ASSESSED VALUATIONS (RURAL, ALL OTHER, TOTAL ASSESSED VALUE), and FINAL EQUALIZED VALUE.

Cass County, Minnesota, for Taxes for the Year 1960.

Table with columns: VALUATIONS BY SCHOOL DISTRICTS AS EQUALIZED BY DEPARTMENT OF TAXATION (District No., Rate, Mills), Tax Including State Homestead, State Tax on Non-Homestead, SPECIAL TAXES, TOTAL TAXES, PAID, WHEN PAID, Number of Receipt, March Settlement 1961, June Settlement 1961, November Settlement 1961, Collections to First Monday in January 1962, Delinquent on First Monday in January 1962, Total Delinquent Tax and Penalty, REMARKS.

Assessment Roll and Tax List of Real Property in the Town of Shingobe

* Indicate Type of Property: R-Residential, C-Commercial, I-Industrial, U-Utility, F-Farm, L-Lakeshore, T-Timber, M-Mineral

Table with columns: IN WHOSE NAME ASSESSED, DESCRIPTION OF PROPERTY, TRUE AND FULL VALUATIONS, ASSESSED VALUATIONS, and FINAL EQUALIZED VALUE. Includes rows for various property owners like Leonard A. Leucker, J.M. Beikel, Phillip R. Jewell, etc.

Cass County, Minnesota, for Taxes for the Year 1960.

Table with columns: VALUATIONS BY SCHOOL DISTRICTS AS EQUALIZED BY DEPARTMENT OF TAXATION, TAX INCLUDING STATE HOMESTEAD, SPECIAL TAXES, TOTAL TAXES, PAID, WHEN PAID, Number of Receipt, March Settlement, June Settlement, November Settlement, Collections to First Monday in January 1962, Delinquent on First Monday in January 1962, Total Delinquent Tax and Penalty, REMARKS. Includes rows for various districts and tax amounts.

Assessment Roll and Tax List of Real Property in the Town of Hinckley

* Indicate Type of Property: R-Residential, C-Commercial, Industrial, U-Utility, F-Farm, L-Lakeshore, T-Timber, M-Mineral

Cass County, Minnesota, for Taxes for the Year 1960.

Table with columns: IN WHOSE NAME ASSESSED, DESCRIPTION OF PROPERTY, TRUE AND FULL VALUATIONS, ASSESSED VALUATIONS, and FINAL EQUALIZED VALUE.

Table with columns: VALUATIONS BY SCHOOL DISTRICTS AS EQUALIZED BY DEPARTMENT OF TAXATION, TAX INCLUDING STATE HOMESTEAD, SPECIAL TAXES, TOTAL TAXES, PAID, WHEN PAID, Number of Receipt, March Settlement 1961, June Settlement 1961, November Settlement 1961, Collections to First Monday in January 1962, Delinquent on First Monday in January 1962, Total Delinquent Tax and Penalty, REMARKS.

Vertical text on the right edge of the page: Beach, Hinckley Island, Childs Point, Lakeona, Shirley, Otway, Ball's 1st Add'n to Childs Point Beach.

Assessment Roll and Tax List of Real Property in the *town* of *Shingobee*

Cass County, Minnesota, for Taxes for the Year 1960.

Form 500 MILLEN-DAVIS CO. MINNAPOLIS * Indicate Type of Property: R-Residential, C-Commercial, I-Industrial, U-Utility, F-Farm, L-Lakeshore, T-Timber, M-Mineral

Main table with columns for IN WHOSE NAME ASSESSED, DESCRIPTION OF PROPERTY, TRUE AND FULL VALUATIONS, ASSESSED VALUATIONS, VALUATIONS BY SCHOOL DISTRICTS, and TAXES. Includes handwritten entries for property owners like Margaret J. Mc-Larry and various tax details.

(cont next page)

Vertical text on the right edge of the page: Shingobee Beach, Shingobee Island, Chippewa Point, Lakeview Springs, Ojibway, Ball's 1st Addn to Florence George Beach

Assessment Roll and Tax List of Real Property in the Town of Shingobee, Cass County, Minnesota, for Taxes for the Year 1960.

Cass County, Minnesota, for Taxes for the Year 1960.

Table with columns for 'IN WHOSE NAME ASSESSED', 'DESCRIPTION OF PROPERTY', 'TRUE AND FULL VALUATIONS', 'ASSESSED VALUATIONS', 'VALUATIONS BY SCHOOL DISTRICTS AS EQUALIZED BY DEPARTMENT OF TAXATION', and 'PAID'. Includes handwritten entries for property owners like 'R.L. + Rena Bennett' and 'Howard R. + Joan Ann Halverson'.

142-31

Shingobee Beach, Shingobee Island, Chippewa Point, Abelson Springs, Ojibway, Ball's 1st Add'n to Chippewa Beach

Assessment Roll and Tax List of Real Property in the _____ of _____

* Indicate Type of Property: R-Residential, C-Commercial, I-Industrial, U-Utility, F-Farm, L-Lakeshore, T-Timber, M-Mineral

Cass County, Minnesota, for Taxes for the Year 1960.

IN WHOSE NAME ASSESSED	DESCRIPTION OF PROPERTY						TRUE AND FULL VALUATIONS			ASSESSED VALUATIONS							Final Assessed Value as Equalized by the Board of Review	FINAL EQUALIZED VALUE	VALUATIONS BY SCHOOL DISTRICTS AS EQUALIZED BY DEPARTMENT OF TAXATION						Tax Including State Homestead	State Tax on Non-Homestead	SPECIAL TAXES	SPECIAL TAXES	TOTAL TAXES	PAID	WHEN PAID	Number of Receipts	March Settlement 1961	June Settlement 1961	Penalty	November Settlement 1961	Penalty	Collections to First Monday in January 1962	Penalty	Delinquent on First Monday in January 1962	Total Delinquent Tax and Penalty	REMARKS										
	SUBDIVISION	Sec. or Lot	Town or Block	Ing.	Number of Acres of Land	Acres 100ths	LAND Exclusive of Structures and Improvements	BUILDINGS and Other Structures	MACHINERY Permanently Attached to Real Estate	TOTAL True and Full Value	RURAL		ALL OTHER			TOTAL ASSESSED VALUE			District																																	
											Homestead Up to \$1,000 20%	Over \$1,000 and Non-Homestead 33 1/4%	Timber Land Class 3e 20%	Homestead Up to \$1,000 25%	Over \$1,000 and Non-Homestead 40%				MACHINERY Permanently Attached to Real Estate 33 1/4%	Seasonal and Recreational Cabins 33 1/4%	No. Rate	No. Rate	No. Rate	No. Rate																			No. Rate	No. Rate	No. Rate	No. Rate	No. Rate					
																					Mills	Mills	Mills	Mills																			Mills	Mills	Mills	Mills	Mills	Mills	Mills	Mills	Mills	Mills
1	N E 1/4 of N E 1/4																																																			
2	N W 1/4 of N E 1/4																																																			
3	S E 1/4 of N E 1/4																																																			
4	S W 1/4 of N E 1/4																																																			
5	N E 1/4 of N W 1/4																																																			
6	N W 1/4 of N W 1/4																																																			
7	S E 1/4 of N W 1/4																																																			
8	S W 1/4 of N W 1/4																																																			
9	N E 1/4 of S E 1/4																																																			
10	N W 1/4 of S E 1/4																																																			
11	S E 1/4 of S E 1/4																																																			
12	N W 1/4 of S E 1/4																																																			
13	S W 1/4 of S E 1/4																																																			
14	N E 1/4 of S W 1/4																																																			
15	N W 1/4 of S W 1/4																																																			
16	S E 1/4 of S W 1/4																																																			
17	N E 1/4 of S W 1/4																																																			
18	S W 1/4 of S W 1/4																																																			
19	N E 1/4 of S W 1/4																																																			
20	S W 1/4 of S W 1/4																																																			

142-51
 Shingobee Island
 Chipewa Point
 Lakeona Springs
 Ojibway
 Ball's 1st Add'n to
 Hitchcock-Quase Beach

Assessment Roll and Tax List of Real Property in the Town of Sunrise Beach of Shingobee

* Indicate Type of Property: R-Residential, C-Commercial, I-Industrial, U-Utility, F-Farm, L-Lakeshore, T-Timber, M-Mineral

Table with columns: IN WHOSE NAME ASSESSED, SUBDIVISION, DESCRIPTION OF PROPERTY, TRUE AND FULL VALUATIONS, ASSESSED VALUATIONS, and FINAL EQUALIZED VALUE. Includes handwritten entries for 'Sunrise Beach' and 'Arner M. Bachman'.

Handwritten summary totals at the bottom of the table, including values like 359, 307, 368, 336, 222, 242, 242, 242.

Cass County, Minnesota, for Taxes for the Year 1960.

Table with columns: VALUATIONS BY SCHOOL DISTRICTS AS EQUALIZED BY DEPARTMENT OF TAXATION, TAXES, PAID, WHEN PAID, and various settlement/penalty columns. Includes handwritten notes like '1463' and '17019'.

Handwritten summary totals at the bottom of the second table, including values like 242, 5864, 158, 6022.

Vertical text on the right edge of the page listing various locations: Sunrise Beach, Shingobee Island, Chipewa Point, Abelson Springs, Otterway, and Paul's 1st Add'n to Otterway.

Assessment Roll and Tax List of Real Property in the Town of Shingobee

* Indicate Type of Property: R-Residential, C-Commercial, I-Industrial, U-Utility, F-Farm, L-Lakeshore, T-Timber, M-Mineral

Main assessment table with columns for property description, valuations, and taxes. Includes handwritten entries for names like 'Fred + Irene Huggett' and 'Simon H. + Dagney Simon'.

Cass County, Minnesota, for Taxes for the Year 1960.

Table detailing school district valuations and tax payments. Columns include 'VALUATIONS BY SCHOOL DISTRICTS AS EQUALIZED BY DEPARTMENT OF TAXATION', 'SPECIAL TAXES', and 'PAID' status with dates.

Vertical text on the right edge of the page, including 'Shingobee Island' and 'Cass County, Minnesota'.

Assessment Roll and Tax List of Real Property in the Town of Shingobee
* Indicate Type of Property: R-Residential, C-Commercial, I-Industrial, U-Utility, F-Farm, L-Lakeshore, T-Timber, M-Mineral

Cass County, Minnesota, for Taxes for the Year 1960.

IN WHOSE NAME ASSESSED	DESCRIPTION OF PROPERTY				No. School District	Indicate Home, Acre, or No. of Property	Agri or Sea, Yes or No	Indicate Type of Property	TRUE AND FULL VALUATIONS				ASSESSED VALUATIONS							TOTAL ASSESSED VALUE	Total Assessed Value as Equalized by the Board of Review	FINAL EQUALIZED VALUE	
	SUBDIVISION	Sec. of Lot	Town or Block	Rng.					Number of Acres of Land	LAND Exclusive of Structures and Improvements	BUILDINGS and Other Structures	MACHINERY Permanently Attached to Real Estate	TOTAL True and Full Value	RURAL		ALL OTHER			MACHINERY Permanently Attached to Real Estate				Seasonal and Recreational Cabins
														Homestead Up to \$4,000 20%	Over \$4,000 and Non-Homestead 33 1/3%	Timber Land Class 3e 20%	Homestead Up to \$4,000 25%	Over \$4,000 and Non-Homestead 40%					
1 <i>KENNETH P. & NAOMI SCHMITZ Kella Anderson</i>	<i>Kabekona Springs</i>	13	4		47	MO	MO	L	51							17	17						
2 <i>EVA ANDERSON</i>	<i>Part of Sec. 8 & 9 - 142-31</i>	14			MO	MO	L	51							17	17							
3																							
4																							
5																							
6																							
7																							
8																							
9																							
10																							
11																							
12																							
13																							
14																							
15																							
16																							
17																							
18																							
19																							
20																							
									102		102		37			37							

SOLD FOR TAXES	VALUATIONS BY SCHOOL DISTRICTS AS EQUALIZED BY DEPARTMENT OF TAXATION						Tax Including State Homestead	State Tax on Non-Homestead	SPECIAL TAXES	SPECIAL TAXES	TOTAL TAXES	PAID	WHEN PAID	Number of Receipt	March Settlement 1961	June Settlement 1961	Penalty	November Settlement 1961	Penalty	Collections to First Monday in January 1962	Penalty	Delinquent on First Monday in January 1962	Total Delinquent Tax and Penalty	REMARKS
	District No.	District No.	District No.	District No.	District No.	District No.																		
	Rate	Rate	Rate	Rate	Rate	Rate																		
1	17						456	12			468		2nd HALF PAID SEP 14 1961											
2	17						456	12			468		1st HALF PAID APR 21 1961 2nd HALF PAID SEP 14 1961		468		468					9288		
3																								
4																								
5																								
6																								
7																								
8																								
9																								
10																								
11																								
12																								
13																								
14																								
15																								
16																								
17																								
18																								
19																								
20																								
									34		34		912	24		936		468		468				

142-31
Kabecona Springs
Shingobee Island
Sunrise Beach

Citrus Grove
Breezy Point
Crescent Beach
Crescent Beach
Liberty
Citrus Grove Beach

Assessment Roll and Tax List of Real Property in the Town of Shingobee of Shingobee County, Minnesota

* Indicate Type of Property: R-Residential, C-Commercial, I-Industrial, U-Utility, F-Farm, L-Lakeshore, T-Timber, M-Mineral

Cass County, Minnesota, for Taxes for the Year 1960.

Table with columns: IN WHOSE NAME ASSESSED, SUBDIVISION, No. of Acres, No. School District, Ind. or Non-Res., Agri. or Non-Agri., Ind. or Non-Ind., TRUE AND FULL VALUATIONS (LAND, BUILDINGS, MACHINERY, TOTAL), ASSESSED VALUATIONS (RURAL, ALL OTHER, MACHINERY, Seasonal and Recreational Cabins, TOTAL ASSESSED VALUE), and FINAL EQUALIZED VALUE.

Table with columns: VALUATIONS BY SCHOOL DISTRICTS AS EQUALIZED BY DEPARTMENT OF TAXATION (District No., Rate, etc.), TAX INCLUDING STATE HOMESTEAD, State Tax on Non-Homestead, SPECIAL TAXES, TOTAL TAXES, PAID, WHEN PAID, Number of Receipt, March Settlement 1961, June Settlement 1961, November Settlement 1961, Collections to First Monday in January 1962, Delinquent on First Monday in January 1962, Total Delinquent Tax and Penalty, REMARKS.

Vertical text on the left margin: Sunrise Beach, Shingobee Island, Shingobee Point, Chilopawa Point, Kabecona Springs, Gilway.

Vertical text on the right margin: Shingobee Beach, Breazy Point, Crescent Beach, 1st Add'n, Ball's 1st Add'n to Shingobee Beach.

Assessment Roll and Tax List of Real Property in the Town of Shingobee

* Indicate Type of Property: R-Residential, C-Commercial, I-Industrial, U-Utility, F-Farm, L-Lakeshore, T-Timber, M-Mineral

Cass County, Minnesota, for Taxes for the Year 1960.

IN WHOSE NAME ASSESSED	DESCRIPTION OF PROPERTY				No. School District	Incl. rate Homestead Yes or No	Agr. or Seas. Use Yes or No	* Incl. rate Type of Property	TRUE AND FULL VALUATIONS				ASSESSED VALUATIONS							FINAL EQUALIZED VALUE
	SUBDIVISION	Sec. or Lot	Town or Block	No. of Acres of Land					LAND Exclusive of Structures and Improvements	BUILDINGS and Other Structures	MACHINERY Permanently Attached to Real Estate	TOTAL True and Full Value	RURAL		ALL OTHER			TOTAL ASSESSED VALUE	Total Assessed Value as Equalized by the Board of Review	
													Homestead Up to \$4,000 20%	Over \$4,000 and Non-Homestead 33 1/3%	Timber Land Class 2e 20%	Homestead Up to \$4,000 25%	Over \$4,000 and Non-Homestead 40%			
Gitchie Gumee Beach	Gitchie Gumee Beach	36	141-31	Acres 100ths					Dollars	Dollars	Dollars	Dollars	Dollars	Dollars	Dollars	Dollars	Dollars	Dollars		
Zelda Ball Johnson		1	1		189	no	no	L	30					30		10		10		
" " "		2				no	no	L	30					30		10		10		
" " "		3				no	no	L	30					30		10		10		
Allen L. + Janet D. Thurman		4				no	yes	R	60	302	302			362				121		
Ruby Anne Jewett		5				no	yes	R	45	396	396			441				121		
Charles L. + Helen Agnes Reddy		6				no	yes	R	42	630	630			672				147		
L.A. Bassett		7				no	yes	R	45	867	867			912				224		
Ruth + Sara Randall		8				no	yes	R	44	480	480			524				304		
Charles W. + Mabel B. Lee		9				no	yes	R	41	120	120			161				175		
" " "		10				no	yes	R	47	264	264			311				54		
Stado Munneke		11				no	yes	R	46	186	186			228				77		
Kathryn + John Robert Helacher		12				no	no	L	9	155	155		3	167				77		
		13																		
		14																		
		15																		
		16																		
		17																		
		18																		
		19																		
		20																		
									469	3122	3591		33	1372	1405			33290		
									3745	4214								884		
																		976		
																		35650		
																		5594		
																		272 24		
																		23 32		

SOLD FOR TAXES	VALUATIONS BY SCHOOL DISTRICTS AS EQUALIZED BY DEPARTMENT OF TAXATION								Tax Including State Homestead	State Tax on Non-Homestead	SPECIAL TAXES	SPECIAL TAXES	TOTAL TAXES	PAID	WHEN PAID	Number of Receipt	March Settlement 1961	June Settlement 1961	Penalty	November Settlement 1961	Penalty	Collections to First Monday in January 1962	Penalty	Delinquent on First Monday in January 1962	Total Delinquent Tax and Penalty	REMARKS
	District No.	District No.	District No.	District No.	District No.	District No.	District No.	District No.																		
	Rate	Rate	Rate	Rate	Rate	Rate	Rate	Rate																		
	119	119	119	119	119	119	119																			
	10	10	10	10	10	10	10	268	06				274	PAID IN FULL JUN 20 1961												
	10	10	10	10	10	10	10	268	06				274	2 PAID IN FULL JUN 20 1961										16282		
	10	10	10	10	10	10	10	268	06				274	3 PAID IN FULL JUN 20 1961	11953									112 pen		
								2936	84				3020	2 HALF PAID SEP 23 1961	15546											
								3566	104				3670	4 HALF PAID MAY 3 1961	14550		15 10							10218		
								5436	158				5594	5 PAID IN FULL MAY 4 1961	8868		36 70							10219		
								9376	214				7590	6 PAID IN FULL FEB 7 1961	568	55 94								9821		
								4246	122				4368	7 PAID IN FULL MAY 1 1961	9215		75 90							10220		
								1310	30				1340	8 PAID IN FULL MAY 1 1961	9209		43 68							10221		
								6552	190				6742	9 PAID IN FULL MAY 2 1961	11043		80 82							10222		
								1868	54				1922	10 PAID IN FULL MAY 25 1961												
								80	02				82	11 PAID IN FULL APR 14 1961	5873		19 32							10223		
														12 PAID IN FULL MAY 4 1961	8887		82							10224		

Shingobee Island
Shingobee Point
Whippersnaw Point
Kabeokona Springs
Qilway
Hall's 1st Add'n to Gitchie Gumee Beach

Shingobee Island
Shingobee Point
Whippersnaw Point
Kabeokona Springs
Qilway
Hall's 1st Add'n to Gitchie Gumee Beach

Assessment Roll and Tax List of Real Property in the

Lower of Singable

* Indicate Type of Property: R-Residential, C-Commercial, I-Industrial, U-Utility, F-Farm, L-Lakeshore, T-Timber, M-Mineral

Cass County, Minnesota, for Taxes for the Year 1960.

Table with columns: IN WHOSE NAME ASSESSED, SUBDIVISION, TRUE AND FULL VALUATIONS (LAND, BUILDINGS, MACHINERY, TOTAL), ASSESSED VALUATIONS (RURAL, ALL OTHER, TOTAL ASSESSED), VALUATIONS BY SCHOOL DISTRICTS AS EQUALIZED BY DEPARTMENT OF TAXATION, SOLD FOR TAXES, PAID, WHEN PAID, Number of Receipt, March, June, November Settlement, Penalty, Collections to First Monday in January 1962, Delinquent on First Monday in January 1962, Total Delinquent Tax and Penalty, REMARKS.

Ball's 1st Add'n to Gitchee Gumee Beach, Gitchee Gumee Beach, Breezy Point, Shell, Chippewa Point, Kabekona Springs, Gribway, Ball's 1st Add'n to Gitchee Gumee Beach

Charlton Smokey's Add'n to Walker to Crescent Beach, Crescent Beach 1st Add'n., Ma Na Ne Bay, Sunliss Heights

Assessment Roll and Tax List of Real Property in the

Town of Shingobee
* Indicate Type of Property: R-Residential, C-Commercial, Industrial, U-Utility, F-Farm, L-Lakeshore, T-Timber, M-Mineral

Cass County, Minnesota, for Taxes for the Year 1960.

112-51
Gitchie Gumee Beach
Breezy Point
Crescent Beach
Duluth
Habeokona Springs
Otisway
Hill's 1st Add'n to Gitchie Gumee Beach

Table with columns: IN WHOSE NAME ASSESSED, SUBDIVISION (Crescent Beach), Description of Property, True and Full Valuations (Land, Buildings, Machinery, Total), Assessed Valuations (Rural, All Other, Machinery, Seasonal, Total), Final Equalized Value, and Remarks.

Table with columns: VALUATIONS BY SCHOOL DISTRICTS AS EQUALIZED BY DEPARTMENT OF TAXATION, Tax Including State, State Tax on Non-Homestead, Special Taxes, Total Taxes, PAID, WHEN PAID, Number of Receipt, and Settlement/Penalty dates.

112-51
Gitchie Gumee Beach
Habeokona Springs
Otisway
Hill's 1st Add'n to Gitchie Gumee Beach
Crescent Beach
Duluth
Habeokona Springs
Otisway
Hill's 1st Add'n to Gitchie Gumee Beach
Crescent Beach
Duluth

Assessment Roll and Tax List of Real Property in the Town of Shingobee

* Indicate Type of Property: R-Residential, C-Commercial, I-Industrial, U-Utility, F-Farm, L-Lakeshore, T-Timber, M-Mineral

Cass County, Minnesota, for Taxes for the Year 1960.

142-51
Gitchee Gumee Beach
Breezy Point
Crescent Beach
Kahelona
Crescent Beach
Gilway
Ball's 1st Add'n to Gitchee Gumee Beach

DESCRIPTION OF PROPERTY				TRUE AND FULL VALUATIONS				ASSESSED VALUATIONS							FINAL EQUALIZED VALUE	
IN WHOSE NAME ASSESSED	SUBDIVISION	Sec. or Lot or Block	Town or Range	Number of Acres of Land	LAND Exclusive of Structures and Improvements	BUILDINGS and Other Structures	MACHINERY Permanently Attached to Real Estate	TOTAL True and Full Value	RURAL			ALL OTHER				TOTAL ASSESSED VALUE
									Homestead Up to \$4,000	Over \$4,000 and Non-Homestead	Timber Land Class 3e 20%	Homestead Up to \$4,000	Over \$4,000 and Non-Homestead	MACHINERY Permanently Attached to Real Estate	Seasonal and Recreational Cabins	
	Crescent Beach, 1st Add'n	26-141-31			Dollars	Dollars	Dollars	Dollars	Dollars	Dollars	Dollars	Dollars	Dollars	Dollars	Dollars	Dollars
	Part of Lot 3 - Sec.															
1	Ruth G. & Owen G. Waychoff	27			84			84						34		
2	Kathel B. Burns	28			72	1190		1262						315		
3	Harry L. & Florence Norma Young	29			86	475		561						140		
4	Edmund G. & Matilda J. Hanna	30			72	394		466						117		
5	" " "	31			86			86						23		
6	" " "	32			72			72						18		
7	L. G. & Ruby Dorsey	33			70	495594		565	357	198				555		
8					71	14361716		1443	300	165				465		
9																
10																
11																
12																
13																
14																
15																
16																
17																
18																
19																
20																

SOLD FOR TAXES	VALUATIONS BY SCHOOL DISTRICTS AS EQUALIZED BY DEPARTMENT OF TAXATION						Tax Including State Homestead	State Tax on Non-Homestead	SPECIAL TAXES	SPECIAL TAXES	TOTAL TAXES	PAID	WHEN PAID	Number of Receipt	March Settlement 1961	June Settlement 1961	November Settlement 1961	Penalty	Collections to First Monday in January 1962	Penalty	Delinquent on First Monday in January 1962	Total Delinquent Tax and Penalty	REMARKS
	District No.	District No.	District No.	District No.	District No.	District No.																	
	District No. 119	District No. 119	District No. 119	District No. 119	District No. 119	District No. 119																	
1																							
2																						10247	
3																						10248	
4																						972	
5																						979	
6																						"	
7																						10239	
8																							
9																							
10																							
11																							
12																							
13																							
14																							
15																							
16																							
17																							
18																							
19																							
20																							

Charlton
Beach
Bremner's Add'n
to Walker
Belford's 1st Add'n
to Shingobee Island
Breezy Point
H. W. Ba Na Ne Bay
Surprise
Hotels

Assessment Roll and Tax List of Real Property in the Town of Hinckley of Minnesota

* Indicate Type of Property: R-Residential, C-Commercial, I-Industrial, U-Utility, F-Farm, L-Lakeshore, T-Timber, M-Mineral

Wa Ba Na No Bay Wa Ba Na No Bay Wa Ba Na No Bay Wa Ba Na No Bay Wa Ba Na No Bay Wa Ba Na No Bay Wa Ba Na No Bay Wa Ba Na No Bay

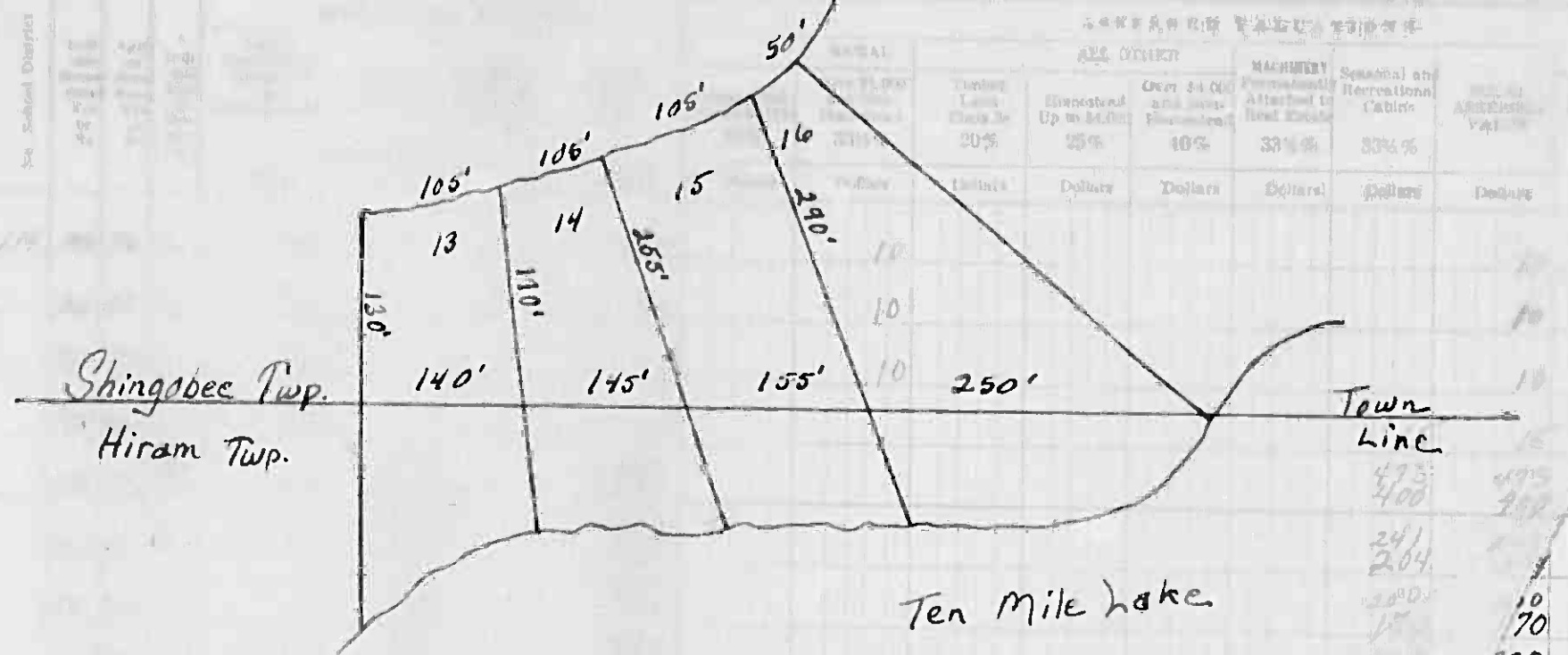
Table with columns: IN WHOSE NAME ASSESSED, SUBDIVISION, No. of Lot, Town or Block, Inq., Acres of Land, No. of School District, Ind. of Home, Agr. of Land, Ind. of Property, TRUE AND FULL VALUATIONS (LAND, BUILDINGS, MACHINERY, TOTAL), ASSESSED VALUATIONS (RURAL, ALL OTHER, MACHINERY, Seasonal and Recreational Cabins, TOTAL ASSESSED VALUE, Total Assessed Value), FINAL EQUALIZED VALUE.

Cass County, Minnesota, for Taxes for the Year 1960.

Table with columns: SOLD FOR TAXES, VALUATIONS BY SCHOOL DISTRICTS AS EQUALIZED BY DEPARTMENT OF TAXATION (District No., Rate, Mills), Tax Including State Homestead, State Tax on Non-Homestead, SPECIAL TAXES, TOTAL TAXES, PAID, WHEN PAID, Number of Receipt, March Settlement 1961, June Settlement 1961, Penalty, November Settlement 1961, Penalty, Collections to First Monday in January 1962, Delinquent on First Monday in January 1962, Total Delinquent Tax and Penalty, REMARKS.

Chaleton Beach to Walker to Hinckley Island to Hinckley Island to Hinckley Island to Hinckley Island to Hinckley Island to Hinckley Island

IN WHOSE NAME ASSESSED	DESCRIPTION OF PROPERTY	Subdivision	Sec. of Lot	Town or Block	Rng	Number of Acres of Land	Acres 1000
James W. + Evelyn S. Schwartz	1st part of Lot 13 lying N. 1/2 of Sec. 14-3	Chariton Beach					
Samuel V. + Mildred M. Carpenter	" " " " 14 " " " 9 141-31						
Arthur B. + Evelyn S. Hunt	" " " " 15 " " " 141-31						
J. M. Brandt	" " " " 16 " " " 141-3						
" " " "	" " " " 17						
Robert B. Huff	18 acre sold						
J. M. Brandt	part of lot 18						
Harold Black + Harold Black, Jr.							
J. C. Lundrigan Jr. + Mabel G. Lundrigan							
Robert B. Huff							
George C. + Mabel Mesters							
Paul L. + Rida O. Offord							
Robert B. Huff							
Adam S. Reisz	Quarter N. 1/4, Section 14-3						
" " "	Outlot a parcel						
" " "	" "						
GEORGE D. GIBBERSON + RUTH G. MARY	1/2 Sec. 14-3, 200' x 150'						
Alpha H. Miner	200' x 150' "						
ARTHUR GLOSHAND	part of "						
" " "	lot 25						



Assessed Value as qualified by the Board of Review	FINAL EQUALIZED VALUE	Soil	FOR TAXES	VALUATIONS BY SCHOOL DISTRICTS AS EQUALIZED BY DEPARTMENT OF TAXATION	Tax Including State Homestead	State Tax on Non-Homestead	SPECIAL TAXES	SPECIAL TAXES	TOTAL TAXES	PAID	WHEN PAID	Number of Receipt	March Settlement 1961	June Settlement 1961	Penalty	November Settlement 1961	Penalty	Collections to First Monday in January 1962	Penalty	Delinquent on First Monday in January 1962	Total Delinquent Tax and Penalty	REMARKS
10	10			10	268	08			276	1	PAID IN FULL FEB 28 1961	5082		276								20259
10	10			10	268	08			276	2	PAID IN FULL MAY 3 1961	10704		276								19258
10	10			10	268	08			276	3	PAID IN FULL MAY 4 1961	9611		276								11259
15	15			15	364	10			374	4	PAID IN FULL MAY 8 1961	9006		374								40260
473	473			473	1178	332			11810	5	PAID IN FULL MAY 8 1961	9006		11810								
241	241			241	5848	168			6016	6	PAID IN FULL AUG 10 1961	14229			6016	150						10281
200	200			200	4854	170			4924	7	PAID IN FULL OCT 9 1961	16164										18475
320	320			320	7764	224			7988	8	1/2 HALF PAID APR 14 1961	5875		3994							3994	11261
20	20			20	536	4			550	9	PAID IN FULL MAY 3 1961	11161		550								90262
20	20			20	536	14			550	10	PAID IN FULL AUG 10 1961	14229		550								16831
197	197			197	5272				5272	11	PAID IN FULL MAY 26 1961	13240		5272								10263
252	252			252	6744				6744	12	1/2 HALF PAID SEP 8 1961	15335		3372								10264
20	20			20	536	14			550	13	PAID IN FULL AUG 10 1961	14229		550								10264
20	20			20	486	14			500	14	PAID IN FULL AUG 10 1961	14229		500								10261
20	20			20	536	14			550	15	PAID IN FULL MAY 16 1961	9437		550								10121
20	20			20	536	14			550	16	PAID IN FULL MAY 16 1961	9437		550								
91	91			91	2436				2436	17	PAID IN FULL MAY 26 1961	10520		2736								10265
540	540			540	30794				30794	20												
130	130			130	17936	480			18416					276	284	60					10982	3994
670	670			670	48730				49400													

Christina's Add'n to Walker
 Smoley's Add'n to Shingobee Island
 Belford's 1st Add'n to Shingobee Island
 Park Point
 Hanson's Point
 Shady Lane

Assessment Roll and Tax List of Real Property in the Town of Shingobee

Cass County, Minnesota, for Taxes for the Year 1960.

142-51
Crescent Beach
Belford's 1st. Add'n
to Shingobee Island
Crescent Beach
1 Park Point
W. E. Na Ne Bay
Heights
Crescent Beach
Belford's 1st. Add'n
to Shingobee Island
Crescent Beach
1 Park Point
W. E. Na Ne Bay
Heights
Crescent Beach
Belford's 1st. Add'n
to Shingobee Island

Table with columns: IN WHOSE NAME ASSESSED, SUBDIVISION, Section, Town, Block, Acres of Land, No. School District, Indicate Homestead, Acreage, Indicate Type of Property, TRUE AND FULL VALUATIONS (LAND, BUILDINGS, MACHINERY, TOTAL), ASSESSED VALUATIONS (RURAL, ALL OTHER, MACHINERY, Seasonal and Recreational Cabins, TOTAL ASSESSED VALUE, Total Assessed Value as Equalized by the Board of Review, FINAL EQUALIZED VALUE).

Table with columns: SOLID FOR TAXES, VALUATIONS BY SCHOOL DISTRICTS AS EQUALIZED BY DEPARTMENT OF TAXATION (District No., Rate), Tax including State Homestead, State Tax on Non-Homestead, SPECIAL TAXES, TOTAL TAXES, PAID, WHEN PAID, Number of Receipt, March Settlement 1961, June Settlement 1961, November Settlement 1961, Collections to First Monday in January 1962, Delinquent on First Monday in January 1962, Total Delinquent Tax and Penalty, REMARKS.

Charlotte Point
Hanson's Point
Shady Lane
Personal

Assessment Roll and Tax List of Real Property in the Laura of Shingobee

Cass County, Minnesota, for Taxes for the Year 1960.

* Indicate Type of Property: R-Residential, C-Commercial, I-Industrial, U-Utility, F-Farm, L-Lakeshore, T-Timber, M-Mineral

DESCRIPTION OF PROPERTY

TRUE AND FULL VALUATIONS

ASSESSED VALUATIONS

VALUATIONS BY SCHOOL DISTRICTS AS EQUALIZED BY DEPARTMENT OF TAXATION

Main table with columns for IN WHOSE NAME ASSESSED, SUBDIVISION, No. of Acres, TRUE AND FULL VALUATIONS, ASSESSED VALUATIONS, VALUATIONS BY SCHOOL DISTRICTS, TAX, State Tax, SPECIAL TAXES, TOTAL TAXES, PAID, WHEN PAID, Number of Receipt, March, June, November Settlement, Collections to First Monday in January, Delinquent on First Monday in January, Total Delinquent Tax and Penalty, and REMARKS.

Vertical text on the left edge of the page, including '142-31' and names like 'Hanson's Point', 'Shady Lane', and 'Personal'.

Vertical text on the right edge of the page, including 'Personal' and 'Shady Lane'.

Assessment Roll and Tax List of Real Property in the Town of Shingobee

* Indicate Type of Property: R-Residential, C-Commercial, I-Industrial, U-Utility, F-Farm, L-Lakeshore, T-Timber, M-Mineral

Cass County, Minnesota, for Taxes for the Year 1960.

Vertical text on the left edge: 42-51, Smokey's, Belford's, Hanson's, Shady Lane

Main table with columns: IN WHOSE NAME ASSESSED, SUBDIVISION, DESCRIPTION OF PROPERTY, TRUE AND FULL VALUATIONS, ASSESSED VALUATIONS, FINAL EQUALIZED VALUE.

Table with columns: VALUATIONS BY SCHOOL DISTRICTS AS EQUALIZED BY DEPARTMENT OF TAXATION, Tax including State Homestead, State Tax on Non-Homestead, SPECIAL TAXES, TOTAL TAXES, PAID, WHEN PAID, Number of Receipt, March Settlement, June Settlement, November Settlement, Penalty, Collections to First Monday in January 1962, Delinquent on First Monday in January 1962, Total Delinquent Tax and Penalty, REMARKS.

Personal

Assessment Roll and Tax List of Real Property in the _____ of _____

* Indicate Type of Property: R-Residential, C-Commercial, I-Industrial, U-Utility, F-Farm, L-Lakeshore, T-Timber, M-Mineral

Cass County, Minnesota, for Taxes for the Year 1960.

IN WHOSE NAME ASSESSED	DESCRIPTION OF PROPERTY				No. School District	Indicate Homestead Yes or No	Agricultural Use Yes or No	Indicate Type of Property	TRUE AND FULL VALUATIONS		ASSESSED VALUATIONS										FINAL EQUALIZED VALUE
	SUBDIVISION	Sec of Lot	Town or Block	Range					Number of Acres of Land	LAND EXCLUSIVE OF STRUCTURES AND IMPROVEMENTS				ALL OTHER						Total Assessed Value as Equalized by the Board of Review	
										Buildings and Other Structures	Machinery Permanently Attached to Real Estate	TOTAL True and Full Value	Homestead Up to \$4,000 20%	Over \$4,000 and Non-Homestead 33 1/3%	Timber Land Class 3e 20%	Homestead Up to \$4,000 25%	Over \$4,000 and Non-Homestead 40%	Machinery Permanently Attached to Real Estate 33 1/3%	Seasonal and Recreational Cabins 33 1/3%		
					Acres (100ths)	Dollars	Dollars	Dollars	Dollars	Dollars	Dollars	Dollars	Dollars	Dollars	Dollars	Dollars	Dollars	Dollars			
1																					
2																					
3																					
4																					
5																					
6																					
7																					
8																					
9																					
10	Grand total				16,759.64				145,840	263,165	20,201	529,006	42,560	466,54	246	42,58	4880	6,667	419.27	1,471.92	
11														42,686	46,443					1,471.07	
12									36,175.3	14,516	522.129		45,972							4,839	1,448.08
13									146,601	433,943		595,060	49,097	519,20		5,113	5,855		476.45	1,647.15	
14									246,484		594,943		518.91								1,646.74
15									146,484	432,943	14,516	594,943	49,082	519.06	246	5,113	5,855	4,839	476.45	1,646.86	5,113
16																					5,113
17																					
18																					
19																					
20																					

SOLD FOR TAXES	VALUATIONS BY SCHOOL DISTRICTS AS EQUALIZED BY DEPARTMENT OF TAXATION						Tax including State Homestead	State Tax on Non-Homestead	SPECIAL TAXES	SPECIAL TAXES	TOTAL TAXES	PAID	WHEN PAID	Number of Receipt	March Settlement 1961	June Settlement 1961	November Settlement 1961	Penalty	Collections to First Monday in January 1962	Penalty	Delinquent on First Monday in January 1962	Total Delinquent Tax and Penalty	REMARKS
	District No.	Rate	District No.	Rate	District No.	Rate																	
	Dollars	Mills	Dollars	Mills	Dollars	Mills																	

142-51
 Christmas Point
 Snokey's
 Belford's 1st. Add'n
 to Shingobee Island
 Hanson's Point
 Park Point
 Shady Lane

Personal

Assessment Roll and Tax List of Real Property in the _____ of _____
* Indicate Type of Property: R-Residential, C-Commercial, I-Industrial, U-Utility, F-Farm, L-Lakeshore, T-Timber, M-Mineral

Cass County, Minnesota, for Taxes for the Year 1960.

142-31
Bellevue, Minn. Add'l
to present Beach
to Shingobee Island
to Belford's 1st. Add'l
to Snokoy's
to Christmas Point

IN WHOSE NAME ASSESSED	DESCRIPTION OF PROPERTY				No. School District	Indicate Home-Stead Yes or No	Agricultural Yes or No	Indicate Type of Property	TRUE AND FULL VALUATIONS				ASSESSED VALUATIONS							FINAL EQUALIZED VALUE												
	SUBDIVISION	Sec. or Lot	Town or Block	Rng.					Number of Acres of Land	LAND Exclusive of Structures and Improvements	BUILDINGS and Other Structures	MACHINERY Permanently Attached to Real Estate	TOTAL True and Full Value	RURAL			ALL OTHER															
														Acres 100ths	Dollars	Dollars	Dollars	Dollars	Dollars		Dollars	Dollars	Dollars	Dollars	Dollars							
																										Homestead Up to \$4,000	Over \$4,000 and Non-Homestead	Timber Land Class 3e	Homestead Up to \$4,000	Over \$4,000 and Non-Homestead	MACHINERY Permanently Attached to Real Estate	Seasonal and Recreational Cabins
																										20%	33 1/2%	20%	25%	40%	33 1/2%	33 1/2%
Dollars									Dollars	Dollars	Dollars	Dollars	Dollars	Dollars	Dollars	Dollars	Dollars	Dollars														
Mari Leachman	Shingobee Falls	1																														
James E. Jensen	Sub Lot 6 Sec 11-197-31	2																														
		3																														
		4																														
		5																														
		6																														
		7																														
		8																														
		9																														
		10																														
		11																														
		12																														
		13																														
		14																														
		15																														
		16																														
		17																														
		18																														
		19																														
		20																														

SOLD FOR TAXES	VALUATIONS BY SCHOOL DISTRICTS AS EQUALIZED BY DEPARTMENT OF TAXATION						Tax including State Homestead	State Tax on Non-Homestead	SPECIAL TAXES	SPECIAL TAXES	TOTAL TAXES	PAID	WHEN PAID	Number of Receipt	March Settlement 1961	June Settlement 1961	Penalty	November Settlement 1961	Penalty	Collections to First Monday in January 1962	Penalty	Delinquent on First Monday in January 1962	Total Delinquent Tax and Penalty	REMARKS
	District No.	District No.	District No.	District No.	District No.	District No.																		
	Rate	Rate	Rate	Rate	Rate	Rate																		
	Mills	Mills	Mills	Mills	Mills	Mills																		
Dollars						\$ cts.	\$ cts.	\$ cts.	\$ cts.	\$ cts.		Month Day Year	\$ cts.	\$ cts.	\$ cts.	\$ cts.	\$ cts.	\$ cts.	\$ cts.	\$ cts.	\$ cts.	\$ cts.		

Personal